



Cloud Assessment

Software Version: 1.01

Windows and Linux Operating System

Virtual Appliance

Document Release Date: January 2018

Software Release Date: January 2018

Legal notices

Warranty

The only warranties for Seattle SpinCo, Inc. and its subsidiaries (“Seattle”) products and services are set forth in the express warranty statements accompanying such products and services. Nothing herein should be construed as constituting an additional warranty. Seattle shall not be liable for technical or editorial errors or omissions contained herein. The information contained herein is subject to change without notice.

Restricted rights legend

Confidential computer software. Except as specifically indicated, valid license from Seattle required for possession, use or copying. Consistent with FAR 12.211 and 12.212, Commercial Computer Software, Computer Software Documentation, and Technical Data for Commercial Items are licensed to the U.S. Government under vendor’s standard commercial license.

Copyright notice

© Copyright 2017 EntIT Software LLC, a Micro Focus company.

Trademark notices

Adobe™ is a trademark of Adobe Systems Incorporated.

Microsoft® and Windows® are U.S. registered trademarks of Microsoft Corporation.

UNIX® is a registered trademark of The Open Group.

Documentation updates

The title page of this document contains the following identifying information:

- Software Version number, which indicates the software version.
- Document Release Date, which changes each time the document is updated.
- Software Release Date, which indicates the release date of this version of the software.

To verify you are using the most recent edition of a document, go to <https://softwaresupport.hpe.com/manuals>.

To check for new versions of software, go to <https://www.hpe.com/software/entitlements>. To check for recent software patches, go to <https://softwaresupport.hpe.com/patches>.

You will also receive updated or new editions if you subscribe to the appropriate product support service. Contact your Micro Focus sales representative for details.

For information and details about the products, services, and support that Micro Focus offers, contact your Client Director.

Support

Visit the Micro Focus Software Support Online web site at <https://software.microfocus.com/en-us/software/customer-technical-support-services>.

This web site provides contact information and details about the products, services, and support that Micro Focus offers.

Micro Focus online support provides customer self-solve capabilities. It provides a fast and efficient way to access interactive technical support tools needed to manage your business. As a valued support customer, you can benefit by using the support web site to:

- Search for knowledge documents of interest
- Submit and track support cases and enhancement requests
- Manage software licenses
- Download new versions of software or software patches
- Access product documentation

- Manage support contracts
- Look up Micro Focus support contacts
- Review information about available services
- Enter into discussions with other software customers
- Research and register for software training

Most of the support areas require you to register as a Passport user and sign in. Many also require a support contract.

To register for a Passport ID, go to <https://cf.passport.softwaregrp.com/hppcf/login.do>.

To find more information about access levels, go to <https://softwaresupport.hpe.com/web/softwaresupport/access-levels>.

To check for recent updates or to verify that you are using the most recent edition of a document, contact your Client Director.

Contents

Chapter 1: About This Guide	5
Chapter 2: Cloud Assessment Virtual Appliance Overview	6
Chapter 3: Hardware and Software Prerequisites	7
Chapter 4: Steps to Set Up and Use the Virtual Appliance	8
2. Deploy the Virtual Appliance Using the Oracle VirtualBox	8
3. Open the Cloud Assessment Welcome Page	9
4. Log In to Cloud Assessment	11
5. Power-Off the Virtual Appliance	11
Chapter 5: Re-import and Clear Demo Data in Cloud Assessment	13
Re-import Demo Data to Cloud Assessment	13
Clear the Data in Cloud Assessment	14
Chapter 6: Install the Extension for Sparx Systems Enterprise Architect Plugin	15
Chapter 7: Install and Configure HCM (Cloud Service Automation)	16
Chapter 8: Enable Hardware Virtualization	18

Chapter 1: About This Guide

Welcome to the Micro Focus Cloud Assessment - Virtual Appliance *Quick Start Guide*. This guide explains how to use the Virtual Appliance to use the trial version of Micro Focus Cloud Assessment (Cloud Assessment).

This guide contains the following chapters:

- [Cloud Assessment Virtual Appliance Overview, on page 6](#)
- [Hardware and Software Prerequisites, on page 7](#)
- [Steps to Set Up and Use the Virtual Appliance, on page 8](#)
- [Re-import and Clear Demo Data in Cloud Assessment , on page 13](#)
- [Install the Extension for Sparx Systems Enterprise Architect Plugin, on page 15](#)
- [Install and Configure HCM \(Cloud Service Automation\), on page 16](#)
- [Enable Hardware Virtualization, on page 18](#)

Chapter 2: Cloud Assessment Virtual Appliance Overview

Trial Version

The Cloud Assessment Virtual Appliance is a trial version of the product you may use for evaluation purposes. The trial version contains a 60 days instant-on license.

Log in to the Virtual Appliance

The Virtual Appliance can be accessed through HTTP/S, a console, or SSH.

To SSH to the machine, use the following credentials (recommended):

- User name: **microfocus**
- Password: **changeit**

For administrative tasks use the following credentials (not recommended):

- User name: **root**
- Password: **hpedemo**

Warranty

The Cloud Assessment Virtual Appliance is provided as-is with no warranty.

Prior to using the Virtual Appliance you must agree with the terms and conditions provided in the homepage.

Chapter 3: Hardware and Software Prerequisites

The following hardware and software is required to run the Virtual Appliance:

- 64-bit Operating System (Windows/Mac/Linux)
- VirtualBox 5
- VMware Workstation Player 12
- Intel CPU with minimum 2 cores and hardware virtualization support (VT-x/AMD-V) enabled
- At least 8GB RAM
- At least 20GB free hard disk space

Chapter 4: Steps to Set Up and Use the Virtual Appliance

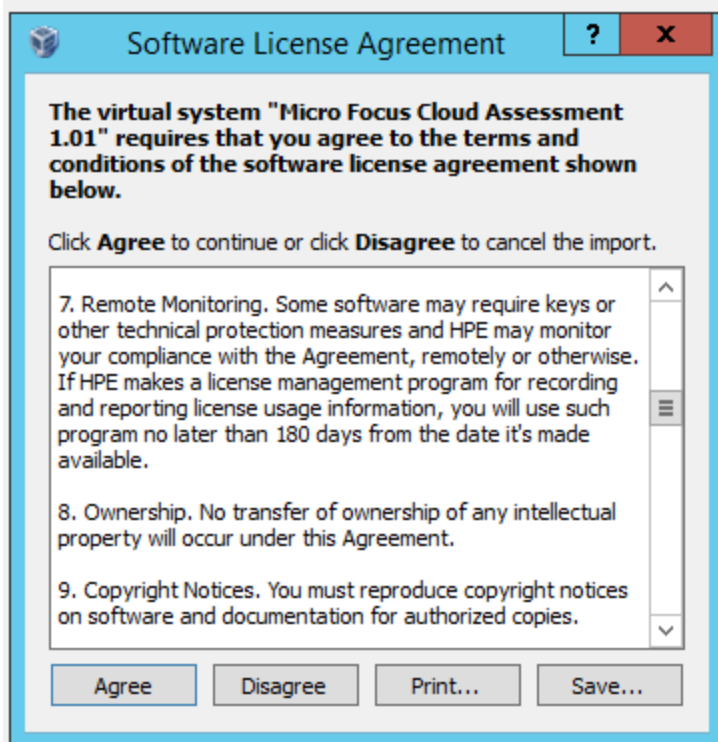
To set up and use the Virtual Appliance to use the Trial version of Cloud Assessment, follow these 5 procedures:

2. [Deploy the Virtual Appliance Using the Oracle VirtualBox, below](#)
3. [Open the Cloud Assessment Welcome Page, on the next page](#)
4. [Log In to Cloud Assessment, on page 11](#)
5. [Power-Off the Virtual Appliance, on page 11](#)

2. Deploy the Virtual Appliance Using the Oracle VirtualBox

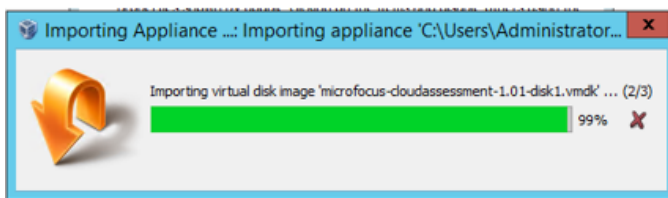
Open <http://www.virtualbox.org> to download and install Oracle VirtualBox (refer to [Hardware and Software Prerequisites, on page 7](#) for supported versions).

Step 3. Start the VirtualBox: **Select File > Import Appliance** and then select the downloaded `microfocus-cloudassessment-1.01.ova` file. The 'Software License Agreement' screen appears.

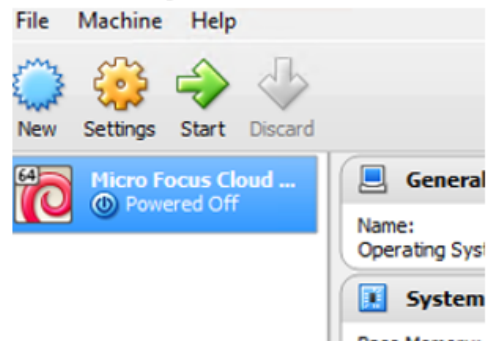


Step 4. Start the Virtual Appliance: Click **Start**.

Step 3



Step 4



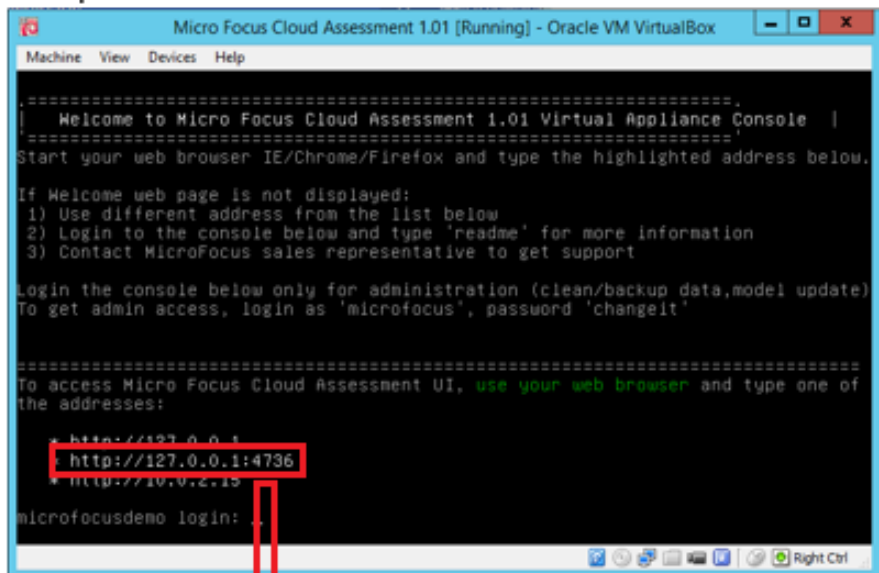
Cloud Assessment also supports VMware virtualization software.

3. Open the Cloud Assessment Welcome Page

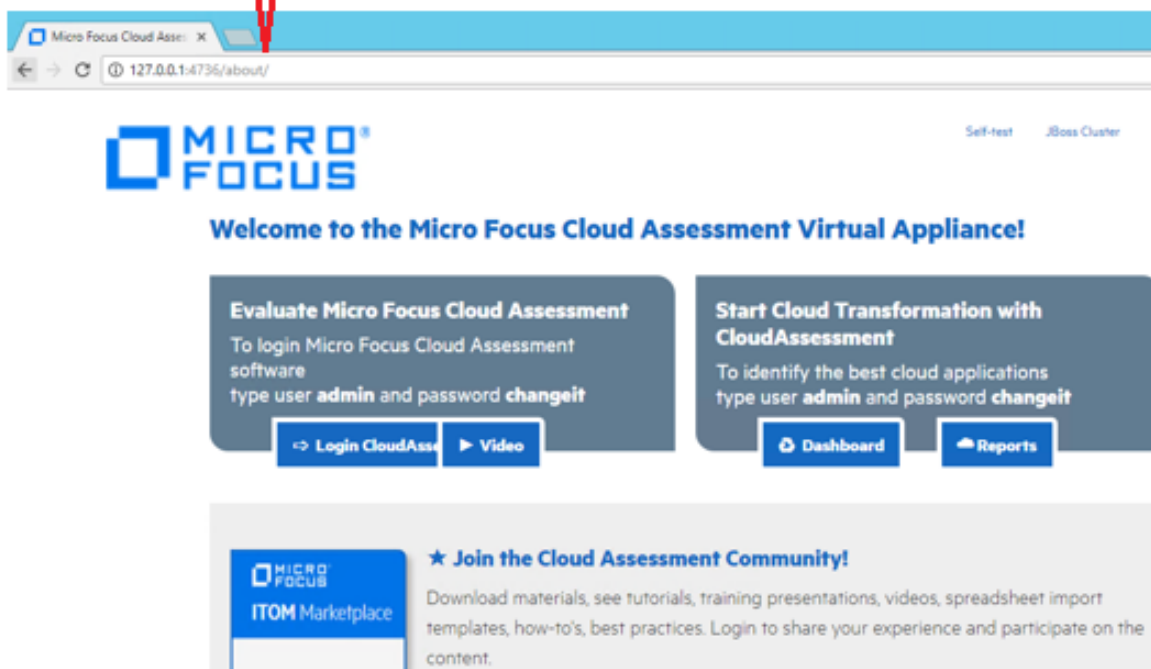
Step 5. Wait for login prompt to appear and locate the Cloud Assessment addresses in your console.

Step 6. Use one of the addresses in your web browser and click the green Login button to open the Cloud Assessment login page.

Step 5



Step 6

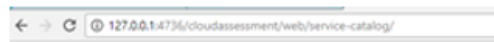


The trial version contains a 60 days instant-on license. To renew the license, use the Micro Focus Licensing Portal <http://enterpriselicense.hpe.com/redirector/home>.

If the Welcome page is not displayed, try to open other listed address from the console. If all addresses are inaccessible, refer to Troubleshooting section in README.TXT or contact your sales representative for support.

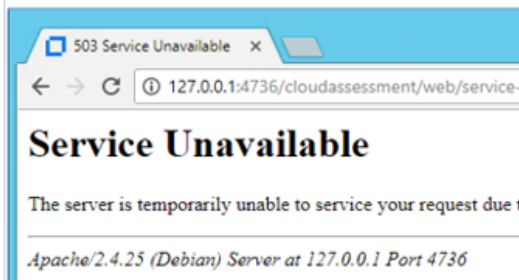
4. Log In to Cloud Assessment

Step 7: Login using **admin** as the User Name and **changeit** as the Password.



Expected

Cloud Assessment server is down. Refresh the page in 1-2 minutes.



Check the deployment status at the http://127.0.0.1/mod_cluster-manager

Virtual Host 1:

Contexts:

```
/microfocus-cloudassessment-doc, Status: ENABLED Request: 0 Disable Stop
/remote-management/api, Status: ENABLED Request: 0 Disable Stop
/remote-management/ui, Status: ENABLED Request: 0 Disable Stop
/cloudassessment/self-test, Status: ENABLED Request: 0 Disable Stop
/cloudassessment/remote, Status: ENABLED Request: 0 Disable Stop
/cloudassessment, Status: ENABLED Request: 0 Disable Stop
/cloudassessment/platform, Status: ENABLED Request: 0 Disable Stop
/cloudassessment/policymgr, Status: ENABLED Request: 0 Disable Stop
/cloudassessment/reporting, Status: ENABLED Request: 0 Disable Stop
/cloudassessment/web, Status: ENABLED Request: 0 Disable Stop
```

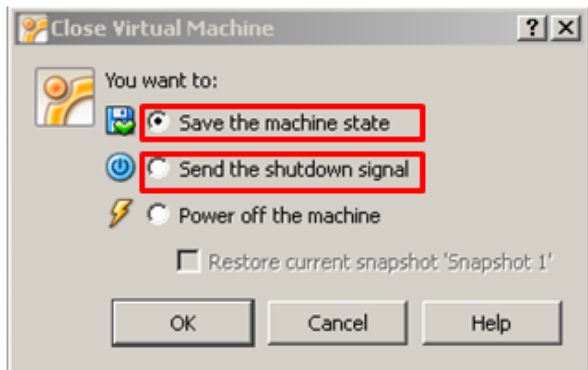
Aliases:

```
default-host
localhost
example.com
```

5. Power-Off the Virtual Appliance

To Close the Virtual Appliance, select one of the following options:

- **Save the machine state** - Similar to hibernate on a real computer. The Virtual Appliance will start quickly but requires additional disk space.
- **Send the shutdown signal** - Full Virtual Appliance shutdown. Same effect as if you had pressed the power button on a real computer



Both options will save all the data stored in the Cloud Assessment software.

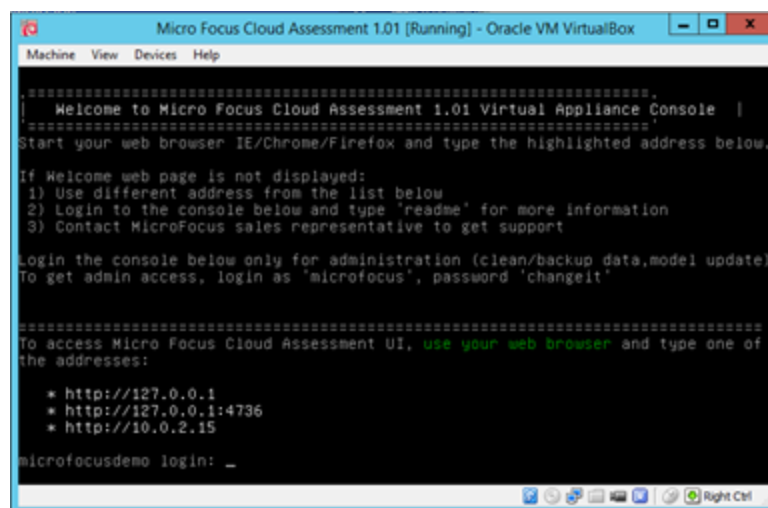
Chapter 5: Re-import and Clear Demo Data in Cloud Assessment

This chapter describes how to re-import the demo data in Cloud Assessment and how to clear the data as follows:

- [Re-import Demo Data to Cloud Assessment, below](#)
- [Clear the Data in Cloud Assessment, on the next page](#)

Re-import Demo Data to Cloud Assessment

Login to the console:
login: **microfocus**
password: **changeit**

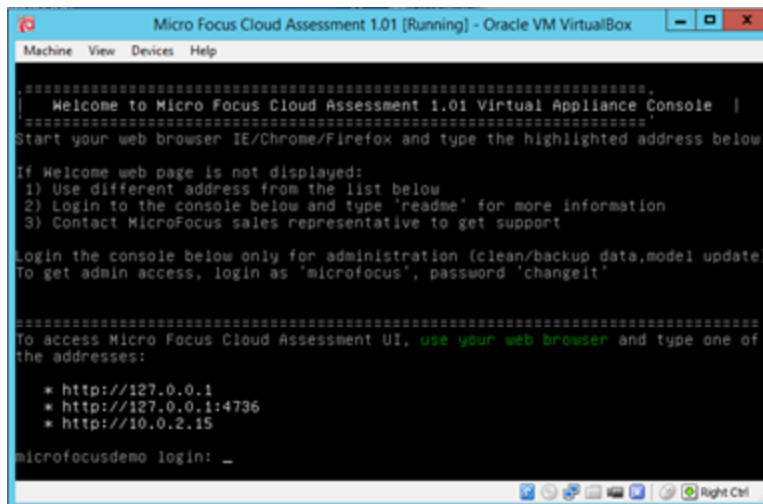


Type the following command (appears in console help):

```
demo
```

Clear the Data in Cloud Assessment

Login to the console:
login: **microfocus**
password: **changeit**



Type the following command (appears in console help):

```
reset
```

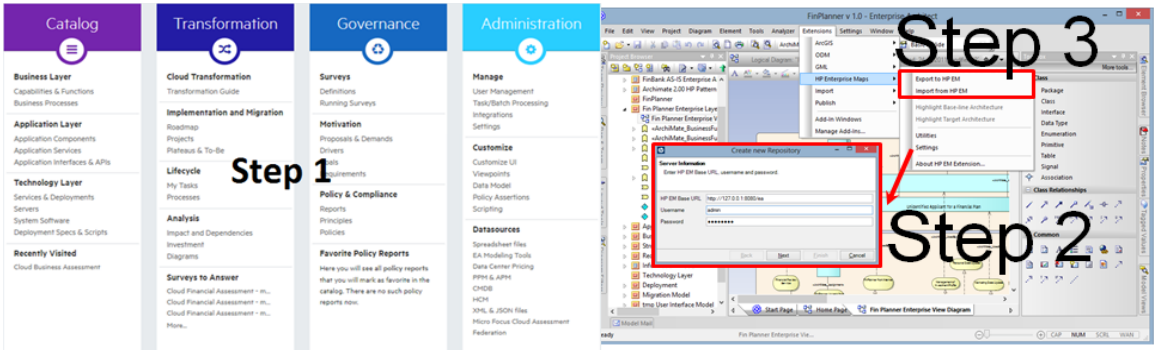
Chapter 6: Install the Extension for Sparx Systems Enterprise Architect Plugin

Step 1. Login to Cloud Assessment, download the Cloud Assessment Extension for Sparx Systems Enterprise Architect (EA) plugin and install the `microfocus-cloudassessment-sparx-1.01.msi` file.

Step 2. Open the project in Extension for Sparx Systems EA, and configure the Cloud Assessment repository.

Step 3. Export and import data with Cloud Assessment.

CAUTION:
The Cloud Assessment synchronization will change the EAP file irreversibly. Use a separate EAP copy for testing purposes.



Chapter 7: Install and Configure HCM (Cloud Service Automation)

This topic describes the steps to be followed to set up HCM (CSA) into Cloud Assessment.

Download and Install HCM (CSA) Installer

- As soon as you log in to the VA console, in the Welcome message you see *csainstall* option, which is really a bash alias prepared to call the script and launch "Easy CSA installation".
- To run *csa.download* and *csa.install* in one step, run *csainstall* command after you login as Micro Focus user.

SSO Configuration (Single Sign-On)

This configuration is optional and requires administration rights to modify the hosts file.

To configure:

- Run *make sso.configure*. This file ensures all the steps in the SSO configuration are complete

Refer the tables below for endpoints available for both Cloud Assessment and HCM (CSA) post installation & deployment, and SSO configuration respectively:

Endpoints for Installation & Deployment

Product	URL	User Name	Password
Cloud Assessment	http://<ipaddress>:8180/cloudassessment	admin	changeit
HCM (CSA)	https://<ipaddress>:8444/ csa	admin	cloud
OO Central (Operations Orchestration)	http://<ipaddress>:8643/oo	admin	changeit

Go to Cloud Transformation tile and select either the Cloud Assessment sub-tile or the Reports sub-tile.

Endpoints for SSO Configuration

Product	URL	User Name	Password
Cloud Assessment	https://hpedemo.example.com:8543/cloudassessment	admin	cloud
HCM (CSA)	https://hpedemo.example.com:8444/ csa	admin	cloud

Once Cloud Assessment and HCM (CSA) are installed and configured, you can simply run the Makefile targets as follows for subsequent use:

- *cloudassessment.start*
- *cloudassessment.stop*
- *csa.start*
- *csa.stop*
- *oo.start*
- *oo.stop*

NOTE:

In case of any errors run `make <target> 2>&1 >logfile.txt` in order to redirect the console to the file.

Chapter 8: Enable Hardware Virtualization

If you see the following dialog, follow the example steps below to enable hardware virtualization in BIOS on your computer:



- Step 1. Reboot your computer and press **F10 Bios Setup** during bootup.
- Step 2. Select **Device Configurations**.
- Step 3. Be sure the **Virtualization Technology** option is checked.

