



# Configuration Management System (CMS)

Software Version: 10.22 Cumulative Update Package 7 (CUP7)

## Release Notes

Document Release Date: June 2018

Software Release Date: June 2018



## Legal Notices

### Disclaimer

Certain versions of software and/or documents ("Material") accessible here may contain branding from Hewlett-Packard Company (now HP Inc.) and Hewlett Packard Enterprise Company. As of September 1, 2017, the Material is now offered by Micro Focus, a separately owned and operated company. Any reference to the HP and Hewlett Packard Enterprise/HPE marks is historical in nature, and the HP and Hewlett Packard Enterprise/HPE marks are the property of their respective owners.

### Warranty

The only warranties for products and services of Micro Focus and its affiliates and licensors ("Micro Focus") are set forth in the express warranty statements accompanying such products and services. Nothing herein should be construed as constituting an additional warranty. Micro Focus shall not be liable for technical or editorial errors or omissions contained herein. The information contained herein is subject to change without notice.

### Restricted Rights Legend

Confidential computer software. Except as specifically indicated otherwise, a valid license from Micro Focus is required for possession, use or copying. Consistent with FAR 12.211 and 12.212, Commercial Computer Software, Computer Software Documentation, and Technical Data for Commercial Items are licensed to the U.S. Government under vendor's standard commercial license.

### Copyright Notice

© 2011 - 2018 Micro Focus or one of its affiliates.

### Trademark Notices

MICRO FOCUS and the Micro Focus logo, among others, are trademarks or registered trademarks of Micro Focus (IP) Limited or its subsidiaries in the United Kingdom, United States and other countries. All other marks are the property of their respective owners.

Adobe™ is a trademark of Adobe Systems Incorporated.

Microsoft® and Windows® are U.S. registered trademarks of Microsoft Corporation.

UNIX® is a registered trademark of The Open Group.

## Documentation Updates

To check for recent updates or to verify that you are using the most recent edition of a document, go to: <https://softwaresupport.softwaregrp.com>.

This site requires that you register for a Software Passport and to sign in. To register for a Software Passport ID, click **Register for Software Passport** on the Micro Focus Support website at <https://softwaresupport.softwaregrp.com>.

You will also receive updated or new editions if you subscribe to the appropriate product support service. Contact your Micro Focus sales representative for details.

## Support

Visit the Micro Focus Support site at: <https://softwaresupport.softwaregrp.com>.

This website provides contact information and details about the products, services, and support that Micro Focus offers.

Micro Focus online support provides customer self-solve capabilities. It provides a fast and efficient way to access interactive technical support tools needed to manage your business. As a valued support customer, you can benefit by using the support website to:

- Search for knowledge documents of interest
- Submit and track support cases and enhancement requests
- Download software patches
- Manage support contracts
- Look up Micro Focus support contacts
- Review information about available services
- Enter into discussions with other software customers
- Research and register for software training

Most of the support areas require that you register as a Software Passport user and to sign in. Many also require a support contract. To register for a Software Passport ID, click **Register for Software Passport** on the Micro Focus Support website at <https://softwaresupport.softwaregrp.com>.

To find more information about access levels, go to: <https://softwaresupport.softwaregrp.com/web/softwaresupport/access-levels>.

**Integration Catalog** accesses the Micro Focus Integration Catalog website. This site enables you to explore Micro Focus Product Solutions to meet your business needs, includes a full list of Integrations between Micro Focus Products, as well as a listing of ITIL Processes. The URL for this website is <https://softwaresupport.softwaregrp.com/km/KM01702731>.

# Contents

Micro Focus Universal CMDB & Configuration Manager Release Notes .....	5
What's New .....	5
What's New in UCMDB 10.22 CUP7 .....	5
What's New in UCMDB 10.22 CUP6 .....	5
What's New in UCMDB 10.22 CUP5 .....	6
What's New in UCMDB 10.22 CUP4 .....	6
What's New in UCMDB 10.22 CUP3 .....	8
What's New in UCMDB 10.22 CUP2 .....	8
What's New in UCMDB 10.22 CUP1 .....	8
Installation Notes .....	8
Universal CMDB and Configuration Manager 10.22 CUP7 Files/Components .....	8
System Requirements .....	9
Install 10.22 CUP7 on the Universal CMDB and Configuration Manager Servers .....	9
Universal CMDB 10.22 CUP7 Manual Data Flow Probe Installation .....	12
Uninstall Universal CMDB and CM 10.22 CUP7 .....	13
Notes .....	14
Known Problems, Limitations, and Workarounds .....	15
Enhancements Requests .....	24
Enhancements Requests in 10.22 CUP7 .....	24
Enhancements Requests in 10.22 CUP6 .....	24
Enhancements Requests in 10.22 CUP5 .....	25
Enhancements Requests in 10.22 CUP4 .....	25
Enhancements Requests in 10.22 CUP3 .....	26
Enhancements Requests in 10.22 CUP2 .....	26
Enhancements Requests in 10.22 CUP1 .....	27
Fixed Defects .....	29
Fixed Defects for UCMDB 10.22 CUP7 .....	29
Fixed Defects for UCMDB 10.22 CUP6 .....	33
Fixed Defects for UCMDB 10.22 CUP5 .....	38
Fixed Defects for UCMDB 10.22 CUP4 .....	44

Fixed Defects for UCMDB 10.22 CUP3 .....	47
Fixed Defects for UCMDB 10.22 CUP2 .....	48
Fixed Defects for UCMDB 10.22 CUP1 .....	55
Documentation Errata .....	60
Appendices .....	62
Enable postgresql.log File Rotation .....	62
Disable Call Home from Data Flow Probe .....	63
How to Enable Reconciliation Log Only for Specific Data in a Job .....	64
How to Disable Remote Access to the Probe JMX Console .....	65
How to Set UCMDB Server Time, Change Time Zone Setting, or Correct System-induced Clock Drift .....	65
How to Increase the Number of Threads for Data Push Jobs .....	66
How to increase the number of threads for data push jobs .....	66
Revert the change .....	67
How to Enable CI Type Tenant Owner Verification during the Matching Phase of Identification .....	68
Tenant Owner Related Known Issues, Problems, and Workaround ...	70
How to Calculate Hash Code for JARs with Annotation .....	72
How to Increase the Java Heap Memory Used by the UCMDB UI Java Applet .....	73
Editing the JSP File .....	73
Editing the Control Panel Java Settings .....	74
How to Limit the XML Enricher Port to Allow Local Connection Only .....	75
How to Prevent Custom CI Attributes Values from Being Updated by Default Values During Reconciliation .....	76
mam.dispatch.log .....	76
How to Disable Updating Last Access Time of Linked CIs during CI Merge Process .....	77
Enable the Start Assisted Modeling link in UCMDB Browser for specific users .....	78
How to Disable the Sorting of IDs during the CI Merge Process .....	79
Send documentation feedback .....	80

# Micro Focus Universal CMDB & Configuration Manager Release Notes

Keep your system up to date with the most recent cumulative update package (CUP) for UCMDB 10.22. This package contains all of the UCMDB 10.22 hotfixes that have been released since the initial release of UCMDB 10.22.

## What's New

### What's New in UCMDB 10.22 CUP7

UCMDB 10.22 CUP7 contains the following new features and changes:

- Filled the data center name for ESX server that belongs to a cluster in the Oracle LMS VMware report.
- Added a method to disable the Call Home feature in Data Flow Probe. This frees port 80, making the port available for other purposes. For more information, see "[Disable Call Home from Data Flow Probe](#)".
- You can now enable log rotation for the postgresql.log file on Data Flow Probes. For more information, see "[Enable postgresql.log File Rotation](#)".
- You can now enable and disable the Start Assisted Modeling link in the Service Modeling module for specific users. For more information, see "[Enable the Start Assisted Modeling link in UCMDB Browser for specific users](#)".
- You can now disable the sorting of IDs during the CI merge process, to improve performance when you merge a large number of bulk CIs. For more information, see "[How to Disable the Sorting of IDs during the CI Merge Process](#)".

### What's New in UCMDB 10.22 CUP6

UCMDB 10.22 CUP6 contains the following new features and changes:

- Added a new option **Impersonate currently logged in user (Windows)** to the **Scanner Configuration Generator** wizard > **Scanner Options** page > **Miscellaneous** tab.

UI Element	Description
<b>Impersonate currently logged in user (Windows)</b>	<p>Defines whether to impersonate the currently logged in user.</p> <p>When this option is cleared, the scanner will run under the Windows <b>LocalSystem</b> account and will not try to impersonate any logged in user. The scanner then assumes that the <b>LocalSystem</b> account has the necessary privileges to capture all the software on that system.</p> <p>By default, this option is selected.</p>

**Note:** This feature requires Content Pack 24.

- Introduced a new parameter (**CIT.notfrombulk.notupdatetime**) for the JMX method **setSettingValue**. Sometimes when one CI is merged with another CI, the **Last Access Time** attribute of linked CIs is also updated. You can disable updating the **Last Access Time** attribute for linked CIs during merge of CIs, if the linked CIs are fetched from the database during the merge process and they are unchanged. For details, see ["How to Disable Updating Last Access Time of Linked CIs during CI Merge Process" on page 77](#).
- Removed support for the Oracle WE8ISO8859P1 character set.

## What's New in UCMDB 10.22 CUP5

No new features were implemented.

## What's New in UCMDB 10.22 CUP4

UCMDB 10.22 CUP4 contains the following new features and changes:

- **Securing access to the Data Flow Probe JMX console to localhost only**

In version 10.22 CUP4, it is possible to secure access to the probe JMX console to the probe server localhost only. For detailed instructions, see ["How to Disable Remote Access to the Probe JMX Console" on page 65](#).

- **Implemented enhancements to the Oracle LMS reports to support Oracle LMS version 1.30**

- The existing Oracle LMS Report button **Export LMS Data** is renamed to **Export LMS DB Options**.
- Added two new buttons in the Oracle LMS Report, allowing you to export more specific Oracle LMS data:
  - **Oracle LMS VMware Data**
  - **Oracle LMS CPU Data**

For details, see the *User Guide* for Oracle LMS version 1.30.

**Note:** This feature requires Oracle LMS 1.30. To download Oracle LMS 1.30 package and the User Guide, go to [Content Packs on HPE Live Network](#).

- **Supportability enhancements**

- Added possibility for enabling reconciliation log only for a specific discovery job

The new JMX method **setDebugReconciliationforJobName** introduced in the **UCMDB:service=Reconciliation Services** category allows you to enable logging discovery job specific reconciliation debug information to a new log file **cmdb.reconciliation.jobName.log**.

For detailed instructions, see "[How to Enable Reconciliation Log Only for Specific Data in a Job](#)" on page 64.

- Remove snapshots without a related view

The new JMX method **removeSnapshotsWithoutRelatedViews** introduced in the **UCMDB:service=Snapshot Services** category allows you to delete snapshots which do not have a view related. This will delete the snapshot CI from UCMDB. Then the entries from history tables will be deleted by purging, depending on the history settings.

In case of an error, you can check the **mam.snapshots.log** file for details.

The delete operation is also logged in the **cmdb.model.audit.short.log** file.

- Added the most common identification rules for the following five classes to supportability handlers to help collect more data for troubleshooting purpose: **node**, **ip\_address**, **interface**, **running\_software**, and **business\_application**.
- Added the thread state to each thread header in **threadDumps** from the **\runtime\log\threadDumps\** directory to help collect more data for troubleshooting purpose.

## What's New in UCMDB 10.22 CUP3

No new features were implemented.

## What's New in UCMDB 10.22 CUP2

UCMDB 10.22 CUP2 contains the following new features and changes:

- **Added possibility for increasing the number of threads for push jobs**

The new setting `com.hp.ucmdb.synchronizer.manager.SynchronizerManagerFactory` added to the `Settings_STATE_CUSTOMER_SETTING` type offers the possibility for you to increase the number of threads for push jobs from the OOTB value 3 to any desired value. For detailed instructions, see "[How to Increase the Number of Threads for Data Push Jobs](#)".

- Enhanced the dbtool to provide an option for resetting writer server time

For detailed instructions, see "[How to Set UCMDB Server Time, Change Time Zone Setting, or Correct System-induced Clock Drift](#)" on page 65.

## What's New in UCMDB 10.22 CUP1

No new features were implemented.

## Installation Notes

## Universal CMDB and Configuration Manager 10.22 CUP7 Files/Components

Micro Focus UCMDB 10.22 CUP7 is packaged in one .zip file.

The **UCMDB\_00207.zip** (for Windows) includes the following files/components:



- **HPUCMDB\_Server\_Patch\_10.22.513.exe**. The installation of the version 10.22 CUP7 UCMDB Server and Data Flow Probe for Windows.
- **HPCM\_Patch\_10.22.84.exe**. The installation of version 10.22 CUP7 UCMDB Configuration Manager for Windows.
- **Read\_Me\_10.22\_CUP.txt**

The **UCMDB\_00208.zip** (for Linux) includes the following files/components:

- **HPUCMDB\_Server\_Patch\_10.22.513.bin**. The installation of the version 10.22 CUP7 UCMDB Server and Data Flow Probe for the Linux platform.
- **HPCM\_Patch\_10.22.84.bin**. The installation of version 10.22 CUP7 UCMDB Configuration Manager for the Linux platform.
- **Read\_Me\_10.22\_CUP.txt**

## System Requirements

For a list of system requirements, see the **UCMDB Support Matrix** PDF file. Check the most previous Release Notes for any additions or changes to the matrix.

**Note:** If you are using an Oracle version that is prior to 10.2.0.5, you must apply the Oracle patch that fixes Oracle defect # 5866410. For details, go to the Oracle website and find the information regarding this defect number.

## Install 10.22 CUP7 on the Universal CMDB and Configuration Manager Servers

CUP Installation for both Universal CMDB and Configuration Manager is performed through an automated procedure using the installation wizard.

You can still install the Data Flow Probes separately by upgrading the Data Flow Probes using the UCMDB user interface. For details, see "[Installation Notes](#)" on the previous page.

**Note:**

- UCMDB 10.22 CUP7 can be installed only on top of an Universal CMDB version 10.22, or version 10.22 with a previous CUP installed.
- UCMDB CM 10.22 CUP7 can be installed only on top of UCMDB CM 10.22.
- The UCMDB CUP version and the CM CUP version must be the same.

## Pre-requisites - UCMDB Server and Data Flow Probes

1. Extract **UCMDB\_00207.zip** (for Windows) or **UCMDB\_00208.zip** (for Linux) to a temporary directory.
2. Stop the Universal CMDB 10.22 server and the Universal CMDB Integration Service (if running) before starting the 10.22 CUP7 installation.

**Note:** If you have a High Availability configuration, the CUP must be installed on all the servers in the cluster, and prior to installation, you must stop all the servers in the cluster.

3. If you have received private patches for the Data Flow Probe, you must delete them before performing the upgrade. These steps for deleting a private patch must be followed whether you are upgrading the probes during the installation wizard, or if you upgrading the probes using the UCMDB user interface after installation is complete.
  - a. Stop the Data Flow Probe.
  - b. Delete all private patches that were installed on the system prior to this CUP by deleting the following directory:  
**\\hp\UCMDB\DataFlowProbe\classes directory**
  - c. Start up the version 10.22 Data Flow Probe.
4. (Oracle LMS only) If you have deployed Oracle LMS 1.31.1 and the **UCMDB10.22CUP6\_Patch\_OracleLMS1.31.zip** patch on top of UCMDB 10.22, you must remove the files deployed from **UCMDB10.22CUP6\_Patch\_OracleLMS1.31.zip** before you install UCMDB 10.22 CUP7.

## CUP Installation

1. For UCMDB: Double-click the file **HPUCMDB\_Server\_Patch\_10.22.513.exe** (for Windows) or **HPUCMDB\_Server\_Patch\_10.22.513.bin** (for Linux) to open the Universal CMDB Server CUP Installation Wizard.

For Configuration Manager: Double click the file **HPCM\_Patch\_10.22.84.exe** (for Windows) or **sh HPCM\_Patch\_10.22.84.bin** (for Linux) to open the Universal CMDB Configuration Manager CUP Installation Wizard.

2. While running the wizard:
  - In the Choose Install Folder screen, select the installation directory in which UCMDB/CM is already installed.
  - For UCMDB, in the Install Data Flow Probe CUP screen, select the following option:
    - **Automatically update Data Flow Probe with the new CUP version** to automatically update during this installation all the Data Flow Probes reporting to this UCMDB.
    - **Update the Data Flow Probe manually** to update the Data Flow Probes reporting to this UCMDB using the UCMDB user interface after completing the installation of this CUP on the UCMDB server. For details, see ["Installation Notes" on page 8](#).
    - In the Required Actions screen, follow the instruction to ensure that the server is down.
3. (Windows only) When the installation wizard for UCMDB is almost complete, the Remove folder access privilege page opens, asking you whether you want to remove the **Users** group access privilege from the **<UCMDBServer\_InstallDir>** folder.

Select **Yes**, the installer removes the **Users** group access privilege from the **<UCMDBServer\_InstallDir>** folder automatically.

Select **No** to remain the same.

**Note:** You can remove the **Users** group access privilege from the **<UCMDBServer\_InstallDir>** folder manually later. Below is a command sample for your reference:

```
CACLS commands 'cacls <user_install_dir> /T /E /R Users'
```

4. (CyberArk integration only) Check if new hash value is the same as the one you configured in the CyberArk server. If different, re-generate the hash value using the following command:

```
java -Xms500m -Xmx1200m -jar JavaAIMGetAppInfo.jar GetHash  
/AppExecutablesPattern="C:\UCMDB\DataFlowProbe\lib"  
/ClassPath="C:\UCMDB\DataFlowProbe\lib;C:\UCMDB\DataFlowProbe\jython"  
/OnlyExecutablesWithAIMAnnotation=yes /LogFileDirectory="c:\temp"
```

And then fill the newly generated hash value into the CyberArk server.

**Caution:** Apart from the OOTB files, DO NOT ADD any additional resources into the **<UCMDB\_Server\_Home>\deploy** directory. Because UCMDB will try to deploy every file from this location, which may cause the **ucmdb-browser.war** file not deployed completely, and as a result the

UCMDB Browser will fail to start.

## Universal CMDB 10.22 CUP7 Manual Data Flow Probe Installation

**Linux:** Always required.

**Windows:** Applicable only when **Update the Data Flow Probes manually** is selected in the CUP installation wizard.

To install the Data Flow Probe CUP upgrade using the UCMDB user interface, follow these steps.

**Note:** All Data Flow Probes that are associated with the UCMDB are upgraded.

1. If you have received private patches for the Data Flow Probe, perform the steps in the section ["Pre-requisites - UCMDB Server and Data Flow Probes"](#) on page 10.
2. In UCMDB, go to **Data Flow Management > Data Flow Probe Setup**, and click **Deploy Probe Upgrade**.
3. In the Deploy Probe Upgrade dialog box, navigate to the **<SERVER\_HOME>\content\probe\_patch\probe-patch-10.22.CUP7-windows/linux.zip** and click **OK**.
4. **Linux only:**
  - a. Stop the Data Flow Probe.
  - b. Extract the upgrade package by running the following file:  

```
/opt/hp/UCMDB/DataFlowProbe/tools/upgrade/extractUpgradePackage.sh
```
  - c. Restart the Data Flow Probe.
5. (Windows only) Remove the **Users** group access privilege from the **<DataFlowProbe\_InstallDir>** folder manually.

Below is a command sample for your reference:

```
CACLS commands 'cacls <user_install_dir> /T /E /R Users'
```

6. (CyberArk integration only) Check if the new hash value is the same as the one you configured in the CyberArk server. If different, re-generate the hash value using the following command:

```
java -Xms500m -Xmx1200m -jar JavaAIMGetAppInfo.jar GetHash
```

```
/AppExecutablesPattern="C:\hp\UCMDB\DataFlowProbe\lib"  
/OnlyExecutablesWithAIMAnnotation=yes /LogFileDirectory="c:\temp"
```

And then fill the newly generated hash value in the CyberArk server.

## Uninstall Universal CMDB and CM 10.22 CUP7

When performing the uninstall procedure, this procedure must be performed for both the UCMDB Server and the Data Flow probes, as well as Configuration Manager.

1. Stop the Universal CMDB and Configuration Manager servers, and all running Data Flow Probes before uninstalling the version CUP.
2. For UCMDB:
  - Windows: Go to **<CMDB installation folder>\UninstallerCup** and double-click **Uninstall HP Universal CMDB Server**. After the CUP is successfully uninstalled, go to **<CMDB installation folder>\runtime** and delete the **jsp** and **jetty-cache** folders.
  - Linux: Go to **<CMDB installation folder>/UninstallerCup** and run **Uninstall HP Universal CMDB Server**. After the CUP is successfully uninstalled, go to **<CMDB installation folder>/runtime** and delete the **jsp** and **jetty-cache** folders.
3. For Configuration Manager:
  - Windows: Go to **Start** menu > **Programs** > **HP Universal CMDB Configuration Manager 10.22** and double click **Uninstall HP Universal CMDB Configuration Manager 10.22 CUP7**.
  - Linux: Go to **<CM installation folder>/\_sp\_installation/** and run **HPCM\_10.22\_CUP7-Uninstall**.
4. Uninstall all existing Probes as follows:
  - a. **Start > All Programs > HP UCMDB > Uninstall Data Flow Probe**.
  - b. Start the server.
  - c. Undeploy the **probeUpdate** package.
5. Reinstall the Probes with the same configuration, that is, use the same Probe IDs, domain names, and server names as for the previous Probe installations. Remember that the Probe ID is case sensitive.

**Note:** After performing an upgrade and installing the new Data Flow Probe, all the Discovery jobs that were active before the upgrade are automatically run.

## Notes

- When upgrading the Data Flow Probe:
  - In a multi-customer environment, if the Data Flow Probe is not automatically upgraded to the latest CUP version, use the manual upgrade procedure to upgrade the Probe manually. For details on the manual upgrade procedure, see "How to Deploy a Data Flow Probe CUP Manually" in the *Data Flow Management section of the UCMDB Help*.
  - The automatic upgrade is not available for Data Flow Probes running on Linux. Use the manual upgrade procedure to upgrade the Probe manually.
  - The Data Flow Probe upgrade is only available for upgrades for minor-minor releases or upgrades between CUP releases. When performing an upgrade to a major or minor release, you must reinstall the Probe.
- If you encounter an error when installing the CUP under Linux on the **/tmp** directory because the **/tmp** directory is configured not to run executables, set the IATEMPDIR environment variable to a location with sufficient permissions and disk space. The IATEMPDIR variable is recognized by InstallAnywhere.

# Known Problems, Limitations, and Workarounds

The following problems and limitations are known to exist in CMS 10.22 CUP1 (or later software, as indicated). The problems are categorized by the affected product area. If a problem has an assigned internal tracking number, that tracking number is provided (in parentheses) at the end of the problem descriptions.

- [Configuration Manager](#)
- [FIPS Deployment](#)
- [Universal CMDB - General](#)
- [Universal CMDB - Topology](#)
- [Universal CMDB - UI](#)
- [Integrations](#)
- [Universal Discovery](#)

## Configuration Manager

---

**PROBLEM:** If Configuration Manager was running in FIPS mode before the installation of UCMDDB 10.21 CUP1 (or a later software), the LW-SSO FIPS configuration is lost after installing the CUP.

**Workaround:** To revert to a working configuration, edit the **servers\server-0\webapps\cnc\WEB-INF\classes\cnclwssofmconf.xml** file relative to your CM installation folder and update the **crypto** tag with the following:

```
<crypto cryptoSource="jce"  
cipherType="symmetricBlockCipher"  
engineName="AES"  
paddingModeName="CBC"  
keySize="256"  
pbeDigestAlgorithm="SHA1"  
encodingMode="Base64Url"  
jceProviderName="JsafeJCE"  
jcePbeAlgorithmName="AES"  
jcePbeMacAlgorithmName="AES"  
macType="hmac"  
macAlgorithmName="SHA1"  
directKeyEncoded="true"
```

```
directKeyEncoding="Base64Ur1"  
algorithmPaddingName="PKCS5Padding"  
pbeCount="20"  
macKeySize="256"  
macPbeCount="20"  
initString="12gHERamY1mD8LfeBp6FwxwE8FU6B1abS"></crypto>
```

---

## FIPS Deployment

---

**PROBLEM:** Switching UCMDB Server to FIPS mode may fail.

**Workaround:** None in this release.

---

**PROBLEM:** After adding a new probe to the UCMDB server that was already switched to the FIPS mode, the automatic FIPS switch process for the new probe might fail. This is because once the newly installed probe is started, it downloads all the resources from the UCMDB server, and when the probe gets the probe upgrade package, it would schedule a restart, which blocks the automatic FIPS Switch process. (QCCR1H106144)

**Workaround:** Once you find that the automatic FIPS Switch process for a new probe failed,

1. Copy the jar files of JCE Unlimited Strength Jurisdiction Policy Files 8 into the `%\DataFlowProbe_HOME%\bin\jre\lib\security` directory on the Data Flow Probe machine.

For more information about how to obtain the files, refer to the *Universal CMDB FIPS Deployment Guide*.

2. Add the following line into the `DataFlowProbe.properties` file on the Data Flow Probe machine, and then save the file.

```
probe.fips.status=1
```

3. Restart the Data Flow Probe.

**Note:** If the Data Flow Probe is in separate mode, you need to perform the above steps for both the Probe Manager and Probe Gateway.

---

## Universal CMDB - General

---

**LIMITATION:** Some scanning tools may flag .dll files in the embedded PostgreSQL database.



**Workaround:** To work around this issue, follow these steps:

1. Visit <https://www.enterprisedb.com/download-postgresql-binaries>, select **Binaries** from installer version 9.4.15, and then download **Linux x86-64** for Linux, or **Wind x86-64** for Windows. This will download one of the following files:
  - postgresql-9.4.15-\*-linux-x64-binaries.tar.gz
  - postgresql-9.4.15-\*-windows-x64-binaries.zip
2. To upgrade the PostgreSQL database on a Windows probe, follow these steps:
  - a. Stop the probe and probe\_db services.
  - b. Go to UCMDB\DataFlowProbe\pgsql\, and then delete all folders except for the data folder.
  - c. Extract postgresql-9.4.15-\*-windows-x64-binaries.zip, and copy everything from this .zip to UCMDB\DataFlowProbe\pgsql\.
  - d. Start the probe and probe\_db services.

To upgrade the PostgreSQL database on a Linux probe, follow these steps:

- a. Stop the probe and probe\_db services.
- b. Go to UCMDB\DataFlowProbe\pgsql\, and then delete all folders except for the data folder.
- c. Extract postgresql-9.4.15-\*-linux-x64-binaries.tar.gz, and copy everything from this .zip to UCMDB\DataFlowProbe\pgsql\.
- d. Start the probe and probe\_db services.

---

**LIMITATION:** Apart from the embedded PostgreSQL database server, installing UCMDB server and database server (Oracle, Microsoft SQL, or PostgreSQL) together on the same machine is not supported. (QCCR1H94636)

**Workaround:** Only the embedded PostgreSQL database server is supported on the same machine with the UCMDB server.

---

**PROBLEM:** There is a wrapper license key support issue for certain time zones, causing UCMDB Probe service unable to start. (QCCR1H105575)

**Workaround:** If you encounter such an issue, contact HPE Software Support to obtain new wrapper license keys, and then manually deploy the provided License keys on probe.

---

**PROBLEM:** Displaying a specific view may crash the UCMDB server. This is because too many nodes were returned by the view that caused many more number of meta links generation and crashed the system with OutOfMemory error. (QCCR1H106088, QCCR1H100903)

**Workaround:** In addition to the fix provided in UCMDB 10.22 CUP1, for views with huge number of nodes and relations, you may also increase the memory of the UCMDB server and the applet. For detailed instructions, see ["How to Increase the Java Heap Memory Used by the UCMDB UI Java Applet" on page 73](#).

---

**PROBLEM:** Cannot deploy Probe Update on UCMDB 10.21 CUP1 Server, and then cannot close the Deploy Probe Update pop-up window when clicking **Close** or **Cancel**. (QCCR1H103164)

**Workaround:** To resolve the UI performance issue, increase Java memory. For detailed instructions, see ["How to Increase the Java Heap Memory Used by the UCMDB UI Java Applet" on page 73](#).

---

**PROBLEM:** Version 10.10 probes appear to corrupt the PostgreSQL database under normal discovery loads. The root cause is that when Anti-Virus is scanning the PostgreSQL data folder, it could corrupt the PostgreSQL tables. (QCCR1H105605)

**Workaround:** To resolve the issue, perform the following:

- Always make sure that the PostgreSQL data directory is added into the anti-virus software exclusion list. By default, the PostgreSQL data directory is **C:\hp\UCMDB\DataFlowProbe\Postgresql\Data**.
- If you need to run weekly-based scan, monitor the **probeerror.log** file, and if a database error shows up (for example, a database error related to the Discovery\_result table), do the following:
  - a. Clean the probe log folder.
  - b. Run **Clear Probe Results Cache** from **UCMDB UI > Data Flow Management > Universal Discovery > Discovery Modules/Jobs** to clean the problematic table.

This should resolve the issue.

---

**LIMITATION:** The UCMDB Push Engine does not support the following TQL queries:

- TQL queries containing SubGraphs
- TQL queries containing Full Path Compound links

**Workaround:** None.

---

**LIMITATION:** The **Schedule Report** window and the **Job List** window may show different time for a scheduled report when the local machine is in a different time zone than the UCMDB server.

**Workaround:** None.

---

**LIMITATION:** Currently it is not possible to create two **Pattern Based Models** with the same name and different tenants in a multi-tenant UCMDB environment with the tenant aware setup. This is because the enrichments and the queries created behind the **Pattern Based Models** must have a unique name. (QCCR1H103293)

**Workaround:** You may use a unique naming convention, with unique prefixes for pattern names for each tenant.

When relating to pattern based models, this workaround also applies to other resources, such as queries and views.

---

**PROBLEM:** When you downgrade UCMDB 10.22 with a CUP (CUP1 or CUP2) to 10.22 by running the `<UCMDB_Install_Dir>/UninstallerCup/Uninstall HP Universal CMDB Server.sh` file, multiple "Unable to remove file" error messages appear during the uninstallation. However, these errors do not affect the functionality of the UCMDB server.

**Workaround:** None.

---

## Universal CMDB - Topology

---

**PROBLEM:** The View result in **Browse Views** is not consistent with the result in the **Modeling Studio**, when creating a New Pattern View with the attribute condition **NOT Node Is Virtual Equal "True"**. (QCCR1H100696)

**Workaround:** To avoid this issue, create a New Pattern View and define the following attribute conditions in the **Query Node Properties** window: **Node Is Virtual Equal "False" AND Node Is Virtual Is null**.

---

## Universal CMDB - UI

---

**PROBLEM:** An error occurs when trying to remove some consumer tenants of a CI: "Failed to save the tenants".

**Workaround:** To avoid removing the System Default Tenant from the Consumer Tenants list, make sure you set the **System Default Tenant** as **consumer**. Only when the **System Default Tenant** is not set as **consumer**, the **Owner Tenant** will be overwritten with the **System Default Tenant** when trying to save.

---

**LIMITATION:** When logging in to UCMDB 10.22, if the user name contains the @ character, the login may fail.

**Workaround:** When creating a user, make sure that the user name does not contain the @ character, unless it is an email address, where you need to provide a valid email address.

Valid username: **myname@company.com**

Invalid username: **myname@company**

---

**LIMITATION:** An unexpected error may occur for Text Mode when an impact is set from the Impact Widget in UCMDB Browser and the direct link is open in UCMDB UI. The reason is that Java applet plug-in cannot start in two tabs simultaneously. Clicking the direct link in UCMDB Browser will try to open another applet plug-in. In case a current applet is already running in a browser tab, the direct link will not load. (QCCR1H109953)

**Workaround:** None.

---

## Integrations

---

**PROBLEM:** Some CIs have no data in the properties or history tabs in UCMDB. This is caused by the absence of CI properties validation in SDK APIs when other products use SDK APIs to push CIs to UCMDB. (QCCR1H113413)

**Workaround:** To workaround this issue, you need to enable CI properties validation on the following SDK APIs:

- com.hp.ucmdb.api.client.topology.CreateCIsAndRelations
- com.hp.ucmdb.api.client.topology.ModifyTopologyBulk
- com.hp.ucmdb.api.client.topology.UpdateCIsAndRelations

To enable CI properties validation on these SDK APIs,

1. On the UCMDB server, launch the Web browser and enter the following address:  
**https://localhost:8443/jmx-console**
2. Enter the JMX console authentication credentials (Login name = **sysadmin**).
3. Locate the **setSettingValue** operation in the **UCMDB:service=Settings Services** category.
4. Provide values for the following fields:  
**customerID:** <Customer ID> (Default: **1**)

**name:** `enable.classmodel.validation.sdk.api`

**value:** `true` (Default: `false`)

5. Click **Invoke**.


---

**PROBLEM:** (NNMi integration using Integration Service only) After creating an NNMi integration point with **IntegrationService** selected for the **Data Flow Probe** property in the Create Integration Point dialog box, running the scheduled NNMi integration job may fail with a remote connection error.

**Workaround:** If you want to use the Integration Service to run a remote process, do the following:

1. Add the following jars to the **basic\_discovery\_minimal\_classpath** setting in the **<UCMDB\_Server\_Home>\integrations\conf\DataFlowProbe.properties** file manually:

```
../lib/cryptojce.jar;../lib/cryptojcommon.jar;../lib/jcmFIPS.jar;
```

2. Append the missing jar file to the value for the **remoteJVMClasspath** property in the Edit Integration Point dialog box.
  - a. In UCMDB UI, go to **Data Flow Management > Integration Studio**.
  - b. Locate the NNMi integration point of your interest and click **Edit Integration Point** .
  - c. In the Adapter Properties section of the Edit Integration Point dialog box, append the following to the value for the **remoteJVMClasspath** property:  
For SQL Server database: `;../lib/mcsqlserver.jar`  
For Oracle database: `;../lib/mcoracle.jar`
  - d. Click **OK**.
  - e. Deactivate the integration point.
  - f. Activate the integration point again.
  - g. Run the NNMi integration job.

---

**Problem:** The Integration Service cannot start due to a failure to connect to the database after you change the master key on the UCMDB server. (QCCR1H102098)

**Workaround:** None.

---

**LIMITATION:** SiteMinder with AJP does not work any more starting from UCMDB 10.21, because Jetty does not support it. That is why after upgrading to UCMDB version 10.21, the UCMDB integration with SiteMinder with IIS as front-end will fail. (QCCR1H105819)

**Workaround:** None.

---

**PROBLEM:** After upgrading UCMDB to the latest CUP, an integration job using a Database connection may fail due to performance issues. (QCCR1H98428)

**Workaround:** To resolve this issue, close the communication logs for the integration job.

---

## Universal Discovery

---

**LIMITATION:** Discovered attributes should not be updated manually. If someone modifies an attribute manually (which was already populated by UD), that value will not be restored the next time the CI is re-discovered if the actual attribute did not change physically.

**Workaround:** None.

---

**PROBLEM:** Data Flow Probe JMX Console is fully accessible without providing any credentials. (QCCR1H112325)

**Workaround:** To fix this issue, do the following:

1. Stop Data Flow Probe.
2. Open the following files using a text editor:
  - **<DataFlowProbe\_Home>\bin\WrapperGateway.conf**
  - **<DataFlowProbe\_Home>\bin\WrapperManager.conf**
3. Add the following line into each of the two files:

```
wrapper.java.additional.58=-XX:+DisableAttachMechanism
```

4. Save the change.
  5. Restart Data Flow Probe.
- 

**LIMITATION:** When using the **Probe TQL Constraint** setting in the Associated Probes pane for a probe in a cluster, the supported maximum count of IP ranges is 15. If configuring 16 or more IP ranges, the **Probe TQL Constraint** setting will not take effect.

**Workaround:** Increase the **tql.validation.max.vars.propertiescondition** setting value to a higher value (IP ranges count x 3 + number of conditions in **Probe TQL Constraint**) by invoking the JMX

method **setSettingValue** and restart the UCMDB server. (Default value: **50**; maximum supported value: **200**)

For example, if you have 16 IP ranges and 4 conditions in **Probe TQL Constraint**, then the value of the **tql.validation.max.vars.propertiescondition** setting needs to be  $(16 \times 3 + 4 = )$  **52** at least.

---

**PROBLEM:** (CyberArk integration only) If you have already configured the hash value in the CyberArk Server as the authentication method, you might encounter the following errors when you install a different version data flow probe or upgrade the data flow probe to a different version.

- Can not get the credential when running the discovery job
- Checking credential failed

And in the **probe-error.log**, you should find an error message similar to the following:

```
... Failed quering password from CyberArk Vault. ... Failed to verify
application authentication data: Hash "XXX" is unauthorized ...
```

**Workaround:** To resolve the issue, re-generate the hash value using the following command:

```
java -Xms500m -Xmx1200m -jar JavaAIMGetAppInfo.jar GetHash
/AppExecutablesPattern="C:\hp\UCMDB\DataFlowProbe\lib"
/OnlyExecutablesWithAIMAnnotation=yes /LogFileDirectory="c:\temp"
```

Then check if the new hash value is the same as the one you configured in the CyberArk server. If different, fill in the newly generated hash value in the CyberArk server.

---

**PROBLEM:** (PostgreSQL only) Some SQL statements are observed running more than 30 minutes, which causes Probe database to crash. The root cause is that the default value of the **statement\_timeout** setting in the **postgresql.conf** file is **0**. (QCCR1H101769)

**Workaround:** To workaround the issue, locate and open the **hp\UCMDB\DataFlowProbe\pgsql\data\postgresql.conf** file in a text editor, and then modify the default value of the **statement\_timeout** setting from **0** to **3600000**.

---

## Enhancements Requests

### Enhancements Requests in 10.22 CUP7

The following table lists the enhancement requests that were implemented in the UCMDB 10.22 CUP7 release.

Global ID	Problem	Solution
QCCR1H111707	You cannot disable the Start Assisted Modeling link in the Service Modeling module.	You can now enable and disable the Start Assisted Modeling link in the Service Modeling module for specific users. This functionality is made possible by introducing a new <b>AssistedModelingVisible</b> infrastructure setting control. For details, see <a href="#">"Enable the Start Assisted Modeling link in UCMDB Browser for specific users"</a>

### Enhancements Requests in 10.22 CUP6

The following table lists the enhancement requests that were implemented in the UCMDB 10.22 CUP6 release.

Global ID	Problem	Solution
QCCR1H115526	This is an enhancement request to add the ability to impersonate the currently logged in user. When this option is not selected, the scanner will run under the Windows LocalSystem account and will not try to impersonate any logged in user.	Implemented the enhancement by adding a new option <b>Impersonate currently logged in user</b> to the <b>Scanner Configuration Generator wizard &gt; Scanner Options page &gt; Miscellaneous</b> tab. This option defines whether to impersonate the currently logged in user. For details, see "Scanner Options Page" in the Universal CMDB Data Flow Management Guide.  <b>Note:</b> This feature requires Content Pack 24.



## Enhancements Requests in 10.22 CUP5

No new enhancement requests were implemented.

## Enhancements Requests in 10.22 CUP4

The following table lists the enhancement requests that were implemented in the UCMDB 10.22 CUP4 release.

Global ID	Problem	Solution
QCCR1H76881 QCCR1H110346	This is a request to provide support for Microsoft SQL Server 2014 with high availability mode (AlwaysOn).	Implemented the enhancement to provide support for Microsoft SQL Server 2014 with high availability mode (AlwaysOn).
QCCR1H110369 QCCR1H111211	The encrypted password does not work for UCMDB Browser's direct links when LDAP authentication is performed.	Implemented the enhancement to support encrypted password for LDAP users.  <b>Note:</b> On UCMDB Browser side, UCMDB Browser 4.10 is required for this enhancement to work.
QCCR1H111388	This is a request for exporting more Oracle LMS related reports, including CPU data and VMware data.	Implemented enhancements to the Oracle LMS Report to support Oracle LMS version 1.30: <ul style="list-style-type: none"> <li>Renamed the existing Oracle LMS Report button <b>Export LMS Data</b> to <b>Export LMS DB Options</b></li> <li>Added two new buttons in the Oracle LMS Report, allowing you to export more specific Oracle LMS data: <b>Oracle LMS VMware Data</b> and <b>Oracle LMS CPU Data</b>.</li> </ul> For details, see the <i>User Guide</i> for Oracle LMS version 1.30.

## Enhancements Requests in 10.22 CUP3

No new enhancement requests were implemented.

## Enhancements Requests in 10.22 CUP2

The following table lists the enhancement requests that were implemented in the UCMDb 10.22 CUP2 release.

Global ID	Problem	Solution
QCCR1H102223	(Cmdb9x adapter only) This is a request to improve the logic for the "Empty modification data has been supplied" error scenario, where references CIs where counted as updates, and to provide a more descriptive error message.	Implemented the enhancement by implementing a code change to add similar approach like that in the ucmdb10x adapter. Now only the proper CIs for updates are counted.
QCCR1H105614	Release Control integration impact analysis calls took too long, because select statements that have condition like CMDB_ID IN (...) were not using indexes. Full table scan was run even if CMDB_ID is indexed. This is a request to improve the Release Control integration impact analysis calls performance.	Implemented the enhancement on Oracle DB dialect by adding appropriate elements to the select statements and forcing index usage.
QCCR1H106790	The push engine is limited to 3 pushes to be scheduled automatically by UCMDb.	Added a new JMX setting <b>com.hp.ucmdb.synchronizer.manager.SynchronizerManagerFactory</b> for increasing the thread count for data push jobs. For details, see <a href="#">"How to Increase the Number of Threads for Data Push Jobs" on page 66</a> .
QCCR1H107411	VMware VirtualCenter Topology by VIM jobs fails with reconciliation error: [SQLServer]Violation of PRIMARY KEY constraint 'PK_MERGED_CIS'.	Enhanced the mechanism which ensures that the CIs from table MERGED_CIS are consistent.

Global ID	Problem	Solution
	Cannot insert duplicate key in object 'dbo.MERGED_CIS'...	
QCCR1H107837	This is a request for adding hardware detection in Supportability.	Implemented the enhancement by adding hardware detection in the core <b>Basic</b> supportability handler. Every time the basic supportability handler is run, an <b>Environment.properties</b> file is created in the Supportability zip file, recording all the hardware information about the target physical or virtual machine.
QCCR1H108127	This is a request for encoding licenses for ASM pack, ASM pack of 10, and ASM pack of 25 as valid in UCMDB.	Implemented the enhancement by replacing the old PD file with a new PD file, which will be used to encode the licenses for the ASM pack, ASM pack of 10, and ASM pack of 25 as valid in UCMDB.
QCCR1H99062	Currently it seems like the OS Architecture field is only discovered for Linux hosts. It is not discovered for SunOS. This is a request to discover it for SunOS hosts as well.	Implemented the enhancement by adding ability to discover OS Architecture for SunOS, AIX, MacOS, and HP-UX.

## Enhancements Requests in 10.22 CUP1

The following table lists the enhancement requests that were implemented in the UCMDB 10.22 CUP1 release.

Global ID	Problem	Solution
QCCR1H105579	The Windows scanner was enhanced to discover Windows device driver data, so the XML Enricher should also be enhanced to be support it.	Implemented the enhancement by adding support for the Windows device driver data to the XML Enricher.
QCCR1H105221	This is a request to provide support for the application signature to include SHA1 hash checking on the CyberArk calling class.	Implemented the enhancement by adding annotation into classes for the CyberArk password vault to provide support for the application signature using annotation in CyberArk integration class. For more details, see <a href="#">"How to Calculate Hash Code for</a>

Global ID	Problem	Solution
		<a href="#">JARs with Annotation</a> ".
QCCR1H104253	When the integration with Service Manager invokes the general Web service of UCMDB in SM to get the actual state of UCMDB CIs, and the response content only has the enum key, it needs an enhancement on the UCMDB web part to return enum values as well for the field.	Implemented the enhancement by adding a new method <b>getCIsByIdWithEnumValues</b> which returns the value of an enum property.
QCCR1H97075 QCCR1H104928	When there are many enrichments based on a query that has a Changed or Unchanged During 24 hours condition on some CI Types, each time the query gets calculated, because the starting point is a link and the number of links is huge, the calculation time is high due to a fuse. The fuse is broken when the starting point is being determined but the TQL query is calculated eventually with another starting point. Therefore, the following error is found in the <b>error.log</b> : "Query result exceeded size limit".	<p>Implemented the enhancement by defining link classes for which a count (SQL in DB) should be performed before the iteration to check if fuse exception needs to be thrown, thus reducing the calculation time.</p> <p>To enable this feature, invoke the <b>setInternalSetting</b> JMX method to set the <b>dal.link.condition.citypes.to.count.for.max.result</b> setting to the desired value with the name of the links for which to verify the count (comma separated values).</p> <p>For example, if the link name is <b>membership</b>, invoke <b>setInternalSetting</b> with name = "dal.link.condition.citypes.to.count.for.max.result" and value = "membership".</p>

## Fixed Defects

### Fixed Defects for UCMDB 10.22 CUP7

The following table lists the defects that were fixed in the UCMDB 10.22 CUP7 release.

CR	Problem	Solution
QCCR1H107173	When you try to install the UCMDB 10.22 server patch on a machine that is running a Russian language operating system, the "Install Data Flow Page" is blank.	This issue is now fixed.
QCCR1I119525	You cannot download resources to Sitescope.	This issue is fixed by updating the probe resource download path for Sitescope.
QCCR1H109263	The OracleLMS report is visible only if you deploy the OracleLMS.zip package.	The OracleLMS report is now visible if you import the Oracle license, regardless of whether or not you deploy the OracleLMS.zip package.
QCCR1H109663	There is a typo in the checking_thread.log file.	The typo is fixed.
QCCR1H114513	The following error message is generated when the UcmbRoutingDomain attribute of an IPAddress CIT is synchronized during a UCMDB-to-UCMDB sync:  java.lang.RuntimeException: Could not find domain	Error messages are no longer generated when a probe is calculated based on the domain.
QCCR1H114765	Data push jobs are not executed to schedule. For example, a full push for BSM is delayed by more than two hours. Additionally, you receive many "OutOfMemory" error messages. This issue occurs because the TQL state machine stops responding.	This issue is fixed by resetting the affected TQL state machine, and then restarting the calculation.

QCCR1H114860	Unable to delete a BusinessService to BusinessService relationship in the Related CIs tab of an Instance Based Model in <b>Modeling &gt; Modeling Studio &gt; Resources</b> .	Fixed the issue by applying a code change to pattern creation.
QCCR1H116188	After you delete some historic tables, there is no history available for nodes which were created before historic tables were deleted, even if they are modified by hand or through a Discovery job.	This issue is now fixed.
QCCR1H116387	When data is pushed from UCMDDB to UCMDDB, push_back_global_ids creates duplicate links.	This issue is now fixed.
QCCR1H116447	You cannot filter out potential IpAddress CIs that are based on IPv6 addresses.	This issue is now fixed.
QCCR1H116994	When normalization rules are applied at the end of the discovery execution, CI CITs may be updated, but they are not also updated in the comm log as an end1/end2 CI, or as a root_container CI.	This issue is now fixed.
QCCR1H117505	Errors that resemble the following are written to the logs.  error.log:2017-10-26 10:11:18,449 ERROR [Request processor timer] (RequestProcessor.java:880) - java.lang.RuntimeException: Coding error. The thread-local context is not initialized. slow.log: 2017-10-26 11:01:44,709 ERROR [Request processor timer] - java.lang.RuntimeException: Coding error. The thread-local context is not initialized. 2017-10-26 11:01:58,297 INFO	This issue is now fixed.

	[Request processor timer] - 28 serving threads	
QCCR1H117554	When you log in to UCMDB with incorrect credentials, no error message is displayed.	Now, when you log in to UCMDB with incorrect credentials, an error message is displayed.
QCCR1H117999	You cannot generate the Master Key by using a JMX method.	The JMX method is now fixed.
QCCR1H118051	When you create a TQL, set "Chassistype is null", and configure error message to be displayed, you cannot save the TQL.	This issue is now fixed.
QCCR1H118093	Modified adapter package files are incorrectly moved to the "No Package" package.	This issue is now fixed.
QCCR1H118228	A probe database deadlock causes UCMDB-NNMI pull integration jobs to fail during a delta sync.	The database deadlock issue is now fixed.
QCCR1H118464	Triggers cannot be deleted from CCM_DISCOVERY_DESTS_RESULTS.	A SQL issue is fixed so that triggers can now be deleted.
QCCR1H118763	When you run newDbTool.sh consistency --preview, one of the queries runs for more than one hour and times out.	The SQL query for the "getLinksWithInvalidEnd1OrEnd2ByCDM" step is now updated.
QCCR1H118989	Discovered attributes can be updated manually, which causes problems with reports because UD does not restore the attributes back to their real value.	The following note was added to the product documentation:  Discovered attributes should not be updated manually. If someone modifies an attribute manually (which was already populated by UD), that value will not be restored the next time the CI is re-discovered if the actual attribute did not change physically.
QCCR1H119269	When you use the Java API-based <b>getAvailabilityMetrics</b> method on the Reader server when the Writer server is down, an exception that resembles the following is returned: Remote server [Writer] did not respond	This issue is now fixed.

QCCR1H119452	An error occurs when you try to open the Direct Link for a report.	This issue is now fixed.
QCCR1H119632	The UCMDB UI does not open and a "java.io.IOException: Too many open files errors" error is written to the log files.	This issue is now fixed.
QCCR1H119679	The Enrichment rule is disabled after you switching from the Reader server to the Writer server.	This issue is now fixed.
QCCR1H120705	Direct links containing credential information in the URL no longer work after you upgrade UCMDB to version 10.22 CUP3.	This issue is fixed by applying a code change to the URL processing mechanism.
QCCR1H120823	The <b>redispathJob</b> JMX method is incorrectly named.	Renamed the method from "redispathJob" to "redispatchJob" and updated the JMX list.
QCCR1H120924	When you configure SRP, a load balancer, or a redirect, you can no longer log in to Configuration Manager.	This issue is fixed by making sure the <code>forwarURIForLoginPageParam</code> parameter in the URL is not lost when you log in by using an SRP.
QCCR1H121187	When debug messages are enabled for attribute mapping for the push adapter, too many messages are written to the log files.	Fixed the issue by applying a code change to log record insertion instead of dumping <code>idToTypes</code> in function <b>getByldAndTypeFromLinked</b> every time.
QCCR1H121574	Inventory Discovery deletes all Installed Software CIs that are discovered by the Host Applications by Shell job.	Fixed the issue by adding a new parameter <i>isServerAutomaticDeletionOnlyForCurrentJob</i> in the adapter configuration. When this parameter is set to true, the automatic deletion on the server side only impacts the Installed Software CIs that are discovered by the current job.
QCCR1H122189	During the Discovery of DB2 Databases in uCMDB, fatal errors that resemble the following are generated in the Host resources by Shell job: Error processing results, for more details please check UCMDB server log files Recommended log files on UCMDB: error.log,	This issue is now fixed.



	<p>cmdb.reconciliation.log, mam.autodiscovery.log The issue occurs when the DB2 server runs on AIX.</p>	
--	---	--

## Fixed Defects for UCMDB 10.22 CUP6

The following table lists the defects that were fixed in the UCMDB 10.22 CUP6 release.

Global ID	Problem	Solution
QCCR1H94636	<p>Apart from the embedded PostgreSQL database server, installing UCMDB server and database server (Oracle, Microsoft SQL, or PostgreSQL) together on the same machine is not supported.</p>	<p>Updated the document to state this limitation clearly.</p>
QCCR1H106427	<p>The <b>TCP Ports</b> job and other discovery jobs are blocked due to wrong value in triggered CI display label</p>	<p>Fixed the issue by adding an IP address validation check. Now discovery jobs dispatch triggered CIs correctly regardless of the display labels.</p>
QCCR1H106492	<p><b>DDMConfigurationService.setProbeRanges()</b> fails to set a duplicated IP address on probe ranges belonging to two different domains.</p>	<p>Now you can set a same IP address in different domains by using <b>DDMConfigurationService.setProbeRanges()</b>.</p>
QCCR1H108742	<p>Two different Load Balancing Clusters with the same name that are discovered by the F5 BIG-IP discovery are merged to one, which is incorrect.</p>	<p>Fixed the issue by changing the reconciliation rule to check related IP Service Endpoints in addition to the name.</p>

Global ID	Problem	Solution
QCCR1H112109	In the <b>Inventory Discovery by Scanner</b> job, the Automatic Deletion mechanism is turned on. Unfortunately not all Installed Software CIs are deleted when they are not included in the current scan file.	<p>You need to add the command <code>isServerAutomaticDeletionEnabled="true"</code> in the <b>InventoryDiscoveryByScanner</b> adapter source as follows.</p> <pre>&lt;resultMechanism isEnabled="true" isServerAutomaticDeletion Enabled="true"&gt;</pre> <p><b>Note:</b> To access the adapter source, go to <b>Adapter Management &gt; Resources</b> pane &gt; <b>Packages &gt; InventoryDiscovery &gt; Adapters</b>, right-click <b>InventoryDiscoveryByScanner</b> and select <b>Edit adapter source</b>.</p>
QCCR1H112633	When associated with multiple CIs, a CI is wrongly deleted as well if one of the relationships between this CI and other CIs is deleted, even though the remaining relationships are still valid.	Fixed the issue by applying a code change. Now CIs are not marked as deleted if they still have a valid relationship.
QCCR1H112951	The <b>Merge Cluster Software</b> job sets the wrong container ID when the Oracle CI triggers the level 2 data in merge.	The <code>cluster_resource_group</code> CIT is kept for the level 2 merge in order to choose properly the root container for the RunningSoftware CIs.
QCCR1H113117	The Atrium integration adapter fails with the following error message: "No username and/or target server defined".	The Atrium integration adapter now works properly.
QCCR1H113725	Delta synchronization via the Atrium integration adapter does not work and the following error message is found in the <b>error.log</b> file: " java.lang.NumberFormatException: Infinite or NaN".	Fixed the issue by applying a code change to prevent the <code>NumberFormatException</code> caused by invalid input.

Global ID	Problem	Solution
QCCR1H113840	On the first page of the <i>Universal CMDB: Network Topology</i> export, when placing the cursor on the title, users see that there is a link to <b>www.hp.com</b> .	Fixed the issue by changing the link to <b>www.hpe.com</b> .
QCCR1H114014	Through direct links, users can access views or reports to which they do not have permissions.	Fixed the issue by applying a code change so that role permissions are validated when users access views or reports by direct links.
QCCR1H114042	The <b>installation_date</b> attribute value discovered by Universal Discovery incorrectly overwrites the custom values filled manually or by integration.	<p>Fixed the issue by adding a validation. Now if the <b>enable.default.value.update</b> setting is <b>false</b>, the CI property is required and its default value is not null, and the incoming value equals default value, then Universal Discovery will not update the existing value of this CI property in the database with the value that it discovered.</p> <p>For example, one CI has a property name with the value <b>ab</b>, and its default value is <b>aa</b>. If the incoming value is <b>aa</b>, the CI property value is still <b>ab</b></p> <p>By default, <b>enable.default.value.update</b> is <b>true</b>. To set its value to <b>false</b>, see <a href="#">"How to Prevent Custom CI Attributes Values from Being Updated by Default Values During Reconciliation"</a> on page 76.</p>
QCCR1H114049	SAP application servers of different CI types with the same SID and Instance are not properly reconciled.	Now the SAP application servers of different CI types with the same SID and Instance can be reconciled properly.
QCCR1H114056	Each logical domain (LDM) server incorrectly consumes two Universal Discovery Full (UDF) licenses.	Now LDM servers would not consume UDF licenses.
QCCR1H114190	The character set WE8ISO8859P1 for Oracle database causes data federation issues between UCMDDB and Service Manager.	Fixed the issue by removing the support for character set WE8ISO8859P1 for Oracle database from the <i>Database section of UCMDDB Help</i> .

Global ID	Problem	Solution
QCCR1H114422	The <b>Collect Network Data by NetFlow</b> job does not run and there is no record of data in the Data Flow Probe database.	Now the <b>Collect Network Data by NetFlow</b> job runs properly and data flow is recorded into the Data Flow Probe database.
QCCR1H114875	Discovery jobs fail with the following error message: "Could not fetch credential from Confidential Manager Client."  This issue happens because the Data Flow Probe incorrectly initializes the Confidential Manager (CM) client repeatedly when restarting and the initialization of CM client fails when the UCMDB server is not up.	Fixed the issue by applying a code change so that now the Data Flow Probe will not initialize CM client repeatedly when restarting.
QCCR1H115068	Several thousand CIs continue to get their <b>Last Access Time</b> updated, which prevents them from getting removed from the system. Many CIs that are still being discovered by jobs no longer exist in the environment. This causes these CIs to be touched and retained in UCMDB when they should not.	Fixed the issue that some CIs are not touched properly by removing the duplicate records in the ID mapping table.
QCCR1H115207	CIs and relationships are not updated correctly when replicating them from external sources to CMS using Jython based integrations.	Fixed the automatic deletion issue so that CIs and relationships can be updated correctly.
QCCR1H115260	The UCMDB-ServiceNow integration pull job does not pull the <b>sys_id</b> attribute back on some Node and RunningSoftware CIs.	Fixed the reconciliation engine issue so that the UCMDB-ServiceNow integration pull job can pull the <b>sys_id</b> attribute properly.
QCCR1H115454	Event Browser is under loading status and becomes inaccessible.	Fixed the issue by inserting only one key per instance instead of inserting different keys for the same DPS server. Now Event Browser works properly.
QCCR1H115545	The <b>Host Applications by Shell</b> job fails with many fatal errors.	Fixed the reconciliation engine issue so that the <b>Host Applications by Shell</b> job works properly.
QCCR1H115567	Scheduled reports are not triggered in UCMDB.	Scheduled reports can now be triggered in UCMDB.

Global ID	Problem	Solution
QCCR1H115569	Scheduled reports cannot be generated in UCMDB because there are unsupported characters in CI attributes.	Scheduled reports can now be generated in UCMDB if there are unsupported characters in CI attributes.
QCCR1H115573	In UCMDB, when sending reports through email, a "Mail not sent..." warning message is sometimes retrieved.	Fixed the issue by applying a code change. Now, sending reports through email will not fail.
QCCR1H115616	Deadlocks are seen in the Oracle database; however, these deadlocks do not seem to be Oracle errors.	Fixed the issue by improving the database action to avoid CCM_DISCOVERY_DESTS_RESULTS table deadlocks.
QCCR1H115757	Suddenly events stop appearing on OMi event browser. This is because TQL calculation fails and gates enter FAILED state and never recover. Every other TQL operation is set on waiting and stacked up until server is unresponsive.	Fixed the issue by creating automatic break-gate operation and so force calculation to recover and retrigger.
QCCR1H115775	When scheduled reports run, they sometimes fail with a NullPointerException exception.	Fixed the issue by adding more log messages to UI-server log on DEBUG loglevel to show the problematic ID from the scheduled report that should be removed.
QCCR1H115780	If UCMDB-UCMDB sync jobs end up in execution_mode <b>errorHandle</b> , then they will not be executed correctly by the scheduler and it will be necessary to run the jobs manually, sometimes even in full mode.	If UCMDB-UCMDB sync jobs end up in execution_mode <b>errorHandle</b> , the scheduler would reset the execution_mode in next pass.
QCCR1H115847	The <b>browser.war</b> file is redeployed each time UCMDB server restarts.	Fixed the issue by implementing a code change so that now the <b>browser.war</b> file is deployed only once.
QCCR1H115910	UCMDB discovery job package source is not updated in case of newer package deployment.	UCMDB discovery job package source will be updated in case of newer package deployment.

## Fixed Defects for UCMDB 10.22 CUP5

The following table lists the defects that were fixed in the UCMDB 10.22 CUP5 release.

Global ID	Problem	Solution
QCCR1H107669	Users cannot log in to the UCMDB 10.22 when the login name is an email address.	Fixed the issue by applying a code change to the user name validation logic. Now if the user name contains '@' character then validate it as an email address.
QCCR1H102061	Atrium push adapter never gives an error in Integration Studio even when there is a failure. For example, when the password of Atrium user account is changed, or the server is not responding, the system still runs with success in Integration Studio with wrong user name or password. But if you manually edit the integration and do a test connection, it will fail. It is expected that Atrium integration job fails if it cannot connect to Atrium when JAR files do not exist.	Fixed the issue by implementing a code change. Now a test connection will fail if the JAR files of Atrium push adapter are absent.
QCCR1H103329	Incomplete header information—there should be a colon (:) and the corresponding value.	Fixed the issue by adding the colon (:) and corresponding value for the problematic properties.
QCCR1H103781	In Package Manager, some packages are missing information. For example, for the VMware package, some columns are empty (for example, <b>Category, Readme, Version, Build Number, and Description</b> ), displaying no package information.	Fixed the issue by implementing a code change. Now the related package information is displayed.
QCCR1H105162	Universal discovery license is consumed twice when using a UCMDB population job.	Fixed the issue by filtering out the problematic attributes.
QCCR1H105774	Some custom defined adapters disappeared from the UCMDB UI after restart.  The special characters angle bracket	Fixed the issue by implementing a code change. Now angle bracket (> or <) can be used in the adapter description.

Global ID	Problem	Solution
	(> or <) in the adapter's description caused SAXParseException and made the adapter disappear from the UI.	
QCCR1H108657	The SPU_DB_CHECK store procedure cannot be compiled on Oracle because the TEST_TABLE table does not exist.	Fixed the issue by applying a code change, so that the TEST_TABLE table is created before running the SPU_DB_CHECK store procedure.
QCCR1H109643	The <b>ProbeGW_Topology_task</b> job blocks the result processing to the UCMDDB application server.	Fixed the issue by implementing a code change. Now the error will not show up when users view the result for the <b>ProbeGW_Topology_task</b> job.
QCCR1H109831	After adding an IP address to the <b>Host Connection by Shell</b> job, it does not show up in the list of IP addresses for discovery.	Fixed the issue by modifying the IP address distribution mechanism. In addition to domain name and IP address value, the probe name is also considered for the distribution of IP addresses.
QCCR1H109881	In the Infrastructure Settings Manager, the unit of the <b>Session Timeout</b> option is <b>milliseconds</b> , which should be <b>seconds</b> .	In the Infrastructure Settings Manager, now the unit of the <b>Session Timeout</b> option is <b>seconds</b> .
QCCR1H111134	Properties for links in external UCMDDB are unavailable if the BSMDowntime adapter is enabled.	Fixed the issue by implementing a code change. Now the properties for links should be available.
QCCR1H111378	Invoking JMX method <b>recalculateAttribute</b> under Model Services returns a <b>null</b> string.	Fixed the issue by adding meaningful return string for JMX method <b>recalculateAttribute</b> and adding debug log messages to track the progress of the operation.
QCCR1H111498	When monitoring the usage of UD licenses, on several occasions the License Summary count from the UI shows "0" CIs being counted. This could last for a few hours or days and then go back to a more accurate count. Also, the License Summary count does not match the count from the Licensed OSIs Report.	Fixed the issue by implementing a code change to prevent saving the license usage data for the Authorized or Actual state. License Summary data now can be calculated properly.
QCCR1H111655	It takes more and more time for UCMDDB Server to start up because of the obsolete data in the jgroupsping	Fixed the issue by applying a code change to use the hash code generated by local host name plus the JRE path of

Global ID	Problem	Solution
	table.	current UCMDDB Server installation as the <b>own_addr</b> instead of a random UUID. Now UCMDDB server starts normally as expected.
QCCR1H111810	Nodes [display name as IP address] generated by <b>Webseal Policy Server Topology by Shell</b> are consuming license count.	Fixed the issue by applying code change. Now a node with hostname equal to an IP address is counted as a dummy node.
QCCR1H111878	Running the Population job is causing performance issues.	Fixed the issue by implementing a code change to avoid the null pointer exception error.
QCCR1H111907	Domain segregation is not working when two domains use duplicate IPs on the network.	Fixed the issue by implementing a code change. Now the domain segregation works fine when there are duplicate IPs on the network of two domains.
QCCR1H111974	The AM integration is updating Last Access Time even when the “ <b>Enable update 'Last Access Time'</b> ” flag on the adapter is disabled.	Fixed the issue by applying code change. Now AM integration does not update Last Access Time when this option is disabled.
QCCR1H112039	When trying to activate the asset manager integration, the following error message is returned: “failed loading supported queries for integration point”, giving little information about where went wrong.	Fixed the issue by applying code change to provide proper error messages, so that users can correct the TQL queries causing problems by themselves.
QCCR1H112043	Users are unable to disable live discovery on specified adapter from UCMDDB UI, and jobs are not dispatched in a timely fashion.	Fixed the issue by implementing a code change to the live discovery logic, so that users can disable live discovery on specified adapters to improve live discovery performance.
QCCR1H112045	Users are unable to split dispatch log in order to trace dispatch performance.	Fixed the issue by implementing a code change to split the dispatch logs and to improve the dispatch performance of live discovery. For instructions about how to enable the new log, see <a href="#">"mam.dispatch.log" on page 76</a> .
QCCR1H112048	Currently the <b>confirm task</b> process still triggers a series of dispatch tasks when the dispatch queue is already busy.	Fixed the issue by implementing a code change, so that the <b>confirm task</b> process checks the dispatch queue status first before triggering more dispatch tasks. It will be pending if the



Global ID	Problem	Solution
		dispatch queue is busy.
QCCR1H112049	Currently the probe limit triggers are calculated repeatedly during the live discovery task. This is not helping with the improvement of dispatch performance.	Fixed the issue by implementing a code change to. Now the probe limit triggers will not be calculated repeatedly during the live discovery task.
QCCR1H112092	The CI status is updated to SUCCESS even though the discovery job fails.	Fixed the issue by applying code change. Now the CI status is updated correctly.
QCCR1H112105	For specific topologies, Merge Cluster Software Job input TQL query computes wrong data for a trigger when all triggers run concurrently.	Fixed the issue by adding a TQL query consistency check for each trigger to make sure the result is consistent.
QCCR1H112126	Users who log in to UCMDB not as the admin role have no permission to perform the Merge CI operation.	Fixed the issue by applying a code change. Now the Merge CIs menu item works properly.
QCCR1H112200	"Transaction snapshot violation" errors found in the <b>error.log</b> , and license summary was calculated on each log in.	Fixed the issue by applying a code change. Now the license calculation is done by default once a day or based on the setting <b>licensing.tql.calculation.scheduler.cron.expression</b> .
QCCR1H112275	UCMDB Rerun Discovery dispatch performance is inefficient and poor.	Fixed the issue by removing some unnecessary dispatch tasks to improve dispatch performance.
QCCR1H112336	When clicking the <b>Rerun</b> button on UI for one job or all jobs, the system is re-dispatching inactivate triggers.	Fixed the issue by applying code change. Now the system would not re-dispatch inactive triggers when users click the <b>Rerun</b> button on UI for one job or all jobs.
QCCR1H112377	XML Enricher cannot parse the value for " <b>FILE_SIZE</b> " probably because of too big file size. This happened when import unrecognized files is enabled in software recognition configuration.	Fixed the issue by applying a code change so that the file size can be increased.
QCCR1H112829	Normalization rules do not work properly for some attributes after upgrading from CP19 to CP20 on environments using Red Hat Enterprise Linux Server 6.5 or Windows Server 2003.	Fixed the issue by implementing a code change. Now normalization rules should work fine.

Global ID	Problem	Solution
QCCR1H112965	When there are more than 5 probes, there is a database performance issue, probes are not sending their results to the UCMDB server.	Fixed the issue by applying a code change to the infrastructure setting <b>Set Max Objects For Insert Results</b> , which is now configurable and the default value is 50.
QCCR1H113138	"NOT" condition on a created relationship does not work in a view.	Fixed the issue by implementing a code change. Now if you set a "NOT" condition on a real relationship (for example, containment and usage) in a view, the view can show a filtered result correctly. However, "NOT" condition on managed relationship does not work since it is an abstract type.
QCCR1H113220	When opening a specific view in UCMDB via the URL created using <b>Generate Direct Link</b> in a separate browser, there are duplicate CIs, which is incorrect.	Fixed the issue by correcting the logic of view count. Now opening a view via direct link shows correct counts of CIs.
QCCR1H113247	he integration point is unavailable because of wrong schedule cron expression that cannot be adjusted.	Fixed the issue by applying a code change. Now the user can correct the wrong schedule of cron expression so that the integration point can be accessed as expected.
QCCR1H113289	Many DB connections are created by UCMDB against the DB server.	Fixed the issue by using the existing connections pool and not creating a new object each time.
QCCR1H113341	When more than 1000 rows are deleted from the table using IN operator, the sql fails on the Database side.	Fixed the issue by using temporary tables when building the SQL.
QCCR1H113354	Unable to delete merged CIs when the CI amount is more than 2000.	Fixed the issue by implementing a code change so that merged CIs can be deleted.
QCCR1H113413	Some CIs have no data in the properties or history tabs in UCMDB. This is caused by the absence of CI properties validation in SDK APIs when other products use SDK APIs to push CIs to UCMDB.	Fixed the issue by adding detailed instructions in the Release Notes. To fix this issue, set <b>enable.classmodel.validation.sdk.api</b> to <b>true</b> by invoking JMX method <b>setSettingValue</b> to enable the CI properties validation on SDK APIs. Default value is <b>false</b> , which is the original process. For details, see <a href="#">QCCR1H113413</a> .

Global ID	Problem	Solution
QCCR1H113422	When management zones are started, trigger CI calculation for individual discovery jobs becomes very slow.	Fixed the issue by changing the management zone rerun dispatch logic to improve management zone rerun performance.
QCCR1H113426	Output exported in the comma-separated values (CSV) format should be identical to that in the .xls (Excel) format.	Fixed the issue by implementing a code change. Now output exported in the .csv format is identical to that in the .xls format.
QCCR1H113447	Error "Problem in adding jar to class path" found in the <b>probe-error.log</b> .	Fixed the issue by adding a logic to check whether a file is a jar file. If not, it will not invoke the <b>addjar</b> method.
QCCR1H113483	ODB (hpbsm_RTSM) not starting when OMi connects to Microsoft SQL Server 2012 AlwaysOn.	Fixed the issue by adding support for Microsoft SQL Server 2012 AlwaysOn.
QCCR1H113525	The ASM job is taking a long time to finish and gets stuck on calculating trigger CIs.	Fixed the issue by implementing a code change. Now it will deep copy the result listener list, so that the inserted result listener will be removed after dispatching.
QCCR1H113533	The aging mechanism of the Database tool ( <b>newDbTool.bat</b> aging) fails with the following error message: "There is no active transaction started".	Fixed the issue so that now if no active transaction exists for the newDBtool aging flow, a new transaction is created.
QCCR1H113560	When running the aging mechanism, a lot of "HAModelsManagerImpl" messages appear in the <b>error.log</b> file.	Fixed the issue by applying a code change. When aging runs, the order of the delete operations should be changed to first links and then objects.
QCCR1H73070	It is not possible to Insert New Model if the CI is created through an enrichment rule.	Fixed the issue by applying a code change. In case the CI created by an enrichment is a Pattern-Based Model, an extra check is performed.
QCCR1H93661	After defining an SCCM Integration, where the authentication is done through NTLM and not SQL credentials, users modified the <b>persistence.xml</b> file according to the guide, however, testing the connection always failed.	Fixed the issue by applying a code change. On an SCCM Integration, the test connection will succeed when authentication is done through NTLM.
QCCR1H95503	When deploying a Content Pack from the JMX console, users encounter	Fixed the issue by changing the Content Pack undeploy errors to warning.

Global ID	Problem	Solution
	Content Pack undeploy errors which should be changed to warning.	
QCCR11121344	The common-beanutils versions are too old (1.8.0 and 1.8.3). Updates are required.	Upgraded the common-beanutils libraries to version 1.9.3. Also upgraded Struts from 1.x to 2.x.

## Fixed Defects for UCMDB 10.22 CUP4

The following table lists the defects that were fixed in the UCMDB 10.22 CUP4 release.

Global ID	Problem	Solution
	OMi users cannot access the UCMDB Administration page.	Fixed the issue by changing the <b>X-Frame-Options</b> from <b>DENY</b> to <b>SAMEORIGIN</b> .
QCCR1H107369	The CMDB is too slow to update credentials. This is because the live discovery updates the domain range document every day even if there are no changes.	Fixed the issue by implementing a code change. The domain range document will not be updated frequently.
QCCR1H108043	UCMDB 10.22 is showing duplicate relations after Full Sync from Asset Manager. Deleted CIs should be sent during a full sync.	Fixed the issue by implementing a code change. UCMDB now supports automatic deletion for Full population run.
QCCR1H108238	After running the <b>clearProbeData.bat</b> script, the Data Flow Probe does not start. This is because the Probe cannot download the <b>IIS.xml</b> identification file.	Fixed the issue by implementing a code change so that now the Data Flow Probe starts after running the <b>clearProbeData.bat</b> script.
QCCR1H108557	After upgrading UCMDB to version 10.11 CUP7 with Content Pack 18, many jobs get stuck on a regular basis.	Fixed the issue by implementing a code change so that now the jobs will not get stuck anymore.
QCCR1H108605	Whenever starting any SM 9.41 population job's full sync, it causes the Data Flow Probe to loop and load the population XML files over and over again; what happens is that the loading consumes a lot CPU. There are no errors or even warnings in the <b>WrapperProbeGw.log</b> file, everything seems to be fine, except that the Data Flow	Fixed the issue by implementing a code change so that now the SM 9.41 Integration population job's full sync works properly and does not cause the Data Flow Probe to loop.

Global ID	Problem	Solution
	Probe loops forever.	
QCCR1H108609	Importing a new version of the <b>user.zsai</b> file from the UCMDB server web UI while accessing the server web UI from the client machine fails with an error message.	Fixed the issue by implementing a code change so that now the <b>user.zsai</b> file can be successfully imported.
QCCR1H108737	The <b>Compare Snapshots</b> option takes too much time to open.	Fixed the issue by implementing a code change to the method, so that now the <b>Compare Snapshot</b> option takes much less time to open.
QCCR1H108758	When testing the basic authentication mode with the Data Flow Probes on top of SSL, the following error message keeps repeating over and over in the <b>WrapperProbeGw.log</b> file: "No credentials available for BASIC 'BasicAuthRealm'".	Fixed the issue so that the system will not show such an error in the basic authentication mode.
QCCR1H108933	In a distributed environment, when the maximum number of Active TQL quota is exceeded, one cannot save an active Enrichment rule based on a new query, and no message is displayed.	Fixed the issue by implementing a code change. Now, when saving an active Enrichment rule based on a new query and the maximum number of Active TQL quota is exceeded, an error message is displayed.
QCCR1H109065	OMi server's CPU usage keeps at 100% due to <b>HPBSM_RTSM.exe</b> 's high CPU usage.	Fixed the issue by changing the Log level for printing stack trace from <b>INFO</b> to <b>ERROR</b> .
QCCR1H109321	When running the SCCM integration with an NT account, the integration job fails when using the <b>persistence.xml</b> file and the value of the <b>temp.tables.enabled</b> setting is <b>true</b> .	Fixed the issue by implementing a code change. Now the SCCM integration does not fail when using the <b>persistence.xml</b> file and the value of the <b>temp.tables.enabled</b> setting is <b>true</b> .
QCCR1H109379	A job such as Database TCP Connections runs on the IP that belongs to a node and creates a Node CI, when it is discovered by <b>Host Connection by Shell</b> and merged, data is lost and the global ID does not exist anymore.	Fixed the issue by implementing a code change. Now data will not be lost and the global ID still exists.
QCCR1H109484	After CP18 is deployed in several environments, the results are inconsistent and different in terms of deployed resources	Fixed the issue by implementing a code change so that the version number can be updated properly.

Global ID	Problem	Solution
	in different environments, and due to inconsistencies, many integrations stop running. This is because the system does not compare the version number.	
QCCR1H109521	Dummy/placeholder nodes that do not have much information collected consume a discovery license.	Fixed the issue by implementing a code change to adjust the logic, so that it will not mark such nodes as requiring the license.
QCCR1H109564	The user lockout mechanism after a number of failed login attempts does not work properly. The user gets locked after 3 failed attempts, even though successful logins were made in-between.	Fixed the issue by implementing a code change. Now after a successful login, the failed login counter is set to zero.
QCCR1H109573	The <b>OutOfMemory</b> error occurs when exporting the Oracle LMS report.	
QCCR1H109655	The Automatic Deletion mechanism does not work properly when performing a Delta Synchronization in UCMDB UI.	Fixed the issue by implementing a code change so that the Automatic Deletion mechanism works properly.
QCCR1H109768	In the High Availability environment, after restarting the UCMDB Server Services, the autodiscovery service gets stuck in the Starting state, making the Writer Server unavailable.	Fixed the issue by implementing a code change so that the autodiscovery service does not get stuck anymore.
QCCR1H109815	When attempting to schedule an AM push job, the following error message appears in the UCMDB UI: "Cannot add job to scheduler".	Fixed the issue by implementing a code change. Now an AM push job can be successfully scheduled in UCMDB.
QCCR1H110070	When running the <b>Inventory Discovery by Scanner</b> job, not all of the existing CIs are triggered by the job. For example, from 17,000 trigger CIs, only a few hundred CIs were triggered, and the job ran for 4 hours.	Fixed the issue by implementing a code change so that now all the CIs are triggered by the <b>Inventory Discovery by Scanner</b> job.
QCCR1H110270	When packaging a custom <b>.zsai</b> file with a special character, the special character loses its format.	Fixed the issue by implementing a code change so that the special character can be parsed properly.
QCCR1H110632	The <b>last access time</b> attribute is not updated for the CIs that have been discovered by the <b>Host Connection by WMI</b> and <b>Host Applications by WMI</b> jobs.	Fixed the issue by setting the value of the <b>last touch time</b> attribute to the system's current time, and save it into the Probe Database. Now the

Global ID	Problem	Solution
		<b>last access time</b> attribute is updated for the CIs that have been discovered by the <b>Host Connection by WMI</b> and <b>Host Applications by WMI</b> jobs.
QCCR1H110659	In UCMDB Browser, the following error message occurs: "Failed to load Report: MQ Topology".	Fixed the Null Pointer issue by implementing a code change. Now the report can be displayed properly.
QCCR1H110793	The Global IDs are not generated for the CIs that have the CMDB ID.	
QCCR1H110886	It is not possible to create or export meaningful error reports from the <b>UCMDB UI &gt; Modeling &gt; Reports -&gt; Custom Reports &gt; Discovery Status &gt; Discovery Error Reports</b> .	Fixed the issue by implementing a code change so that now meaningful error reports can be created and exported from the <b>UCMDB UI &gt; Modeling &gt; Reports -&gt; Custom Reports &gt; Discovery Status &gt; Discovery Error Reports</b> .
QCCR1H111271	There are a lot of "Error {0}" encountered during parsing of CI" errors in the UCMDB server <b>error.log</b> .	Fixed the issue by implementing a code change. Now time format with EEE MMM dd HH:mm:ss zzz yyyy in non-English language Operating Systems can be parsed.

## Fixed Defects for UCMDB 10.22 CUP3

The following table lists the defects that were fixed in the UCMDB 10.22 CUP3 release.

Global ID	Problem	Solution
QCCR1H109318	Value of the <b>Is_touched</b> column is always <b>Y</b> after rerunning a job which caused "Last Access Time" always updated with touch interval.	Fixed the issue by implementing a code change. Now the value of the <b>Is_touched</b> column is updated from <b>Y</b> to <b>N</b> after touch.
QCCR1H108252	While users perform troubleshooting, suddenly all credentials disappear from the Universal Discovery console. This is caused by multiple threads trying to access domain probe	Fixed the concurrent modification exception by implementing a code change. Now UCMDB server works properly when updating credentials.

Global ID	Problem	Solution
	data object at the same time.	
QCCR1H108823	Sometimes <b>ArrayIndexOutOfBoundsException</b> or <b>NullPointerException</b> exception occurs when jobs are running.	Fixed the <b>ArrayIndexOutOfBoundsException</b> or <b>NullPointerException</b> exception issue by implementing a code change.
QCCR1H109829	The Russian translation of some terms are not proper according to the context.	Fixed the issue by correcting Russian translation of affected terms.

## Fixed Defects for UCMDDB 10.22 CUP2

The following table lists the defects that were fixed in the UCMDDB 10.22 CUP2 release.

Global ID	Problem	Solution
QCCR1H90996	Errors found in the error log of the reader, including errors related to parsing management zone XMLs and some other stuff, which were caused by the invalid XML character "&" in the description.	Fixed the issue by implementing a code change to escape invalid chars in XML, including <b>&amp;'&lt;&gt;'</b> .
QCCR1H93805	Users logging in without any assigned permissions see blank screen instead of an error indicating no modules can be displayed due to a lack of permissions.	Fixed the issue by implementing a code change. User without UI access permission are not allowed to login and see blank page. Also added a warning message if the user has no access to any UI module. This is present as a general action for each role.
QCCR1H96379	The AWS by Web Services job does not work due to an access credentials issue. The AWS API used by the job includes joda-time-2.2.jar, however the probe lib folder ( <b>C:\hp\UCMDDB\DataFlowProbe\lib</b> ) contains an old version of <b>joda-time.jar</b> .	Fixed the issue by replacing the old joda-time.jar file with a v2.2 <b>joda-time.jar</b> file on the probe side.
QCCR1H100637	A non Server Administrator user is not able to create and edit packages, otherwise a null pointer exception is thrown.	Fixed the issue by implementing a code change to avoid the null pointer exception.
QCCR1H101895	After upgrading UCMDDB to 10.20, an error is	Fixed the issue by implementing



Global ID	Problem	Solution
	received regarding to one of the existing database integrations: Failed adding/updating DataStore to server [ 'QueryName' :-: 'PatternId' ]	a code change to use more complex syntax for the plus (+) symbol, so that it will have no impact on other strings that contains a plus symbol.
QCCR1H103058	The View Scan Debug Log button does not work in HTTPS UCMDB environment. The Probe is set to HTTPS, but the Probe still sends uploadScanFile request using HTTP.	Fixed the issue by implementing a code change so that when the probe sends the uploadScanFile request, it chooses HTTP or HTTPS protocol according to the Probe configuration.
QCCR1H103978	The AM Push job fails on some probes from time to time during execution, with the ProbeAdhocTaskPickupTimeout Exception error.	Fixed the issue by implementing a code change. Now when the Probe picks up the Ad Hoc task and executes it properly, no error message will be thrown in the log file.
QCCR1H105064	When using Push Adapter on a UCMDB instance on Oracle database, NET8 Error message is received due to the Oracle library being used.	Fixed the issue by updating the JDBC Oracle driver.
QCCR1H105103	(OMi 10.01) OMi-UCMDB integration fails on port 80. This is because the DefaultSessionTenant header is missing from the message causing OMi JBoss to reject the messages.	Fixed the issue by implementing a code change to add the DefaultSessionTenant header to the message.  <b>Note:</b> This fix requires that you manually redeploy the UCMDB 10.x adapter package located in the <b>C:\hp\UCMDB\UCMDBServer\content\adapters</b> directory after installing UCMDB 10.22 CUP2.
QCCR1H105229 QCCR1H109099	TQL result count calculated in the Server UI does not match the calculation via JMX or SM data push.	Fixed the issue by implementing a code change to the calculation logic. Now the TQL result count calculated in the Server UI matches the calculation via JMX or SM data push.
QCCR1H105260	There is a problem with red icons on UCMDB	Fixed the issue by implementing

Global ID	Problem	Solution
	10.11, which are not colored in red 10.11.	a code change so that red icons are properly colored.
QCCR8D44233	(OMi only) The OMi console crashes frequently with "Internal Server Error". When the problem happens, JBoss does not abort but consumes up to 50% CPU.	Fixed the issue by implementing a code change.
QCCR1H105344	The Oracle LMS Report cannot be saved from the reader server in HA mode.	Fixed the issue by implementing a code change, now reader server can also download and save the Oracle LMS report.
QCCR1H105510	By default, scheduled SM population jobs synchronize changes only. Setting full-population-days-interval to 0 in the SM adapter XML has no effect – only changes are synchronized.	Fixed the issue by implementing a code change so that it is possible to schedule full SM populations by setting full-population-days-interval to 0 in the SM adapter XML.
QCCR1H105680	When pushing the data from UCMDDB to OMi, if the data is larger than the chunk size, invalid CIs are pushed to OMi and fail to be reconciled.	Fixed the issue by implementing a code change, so that related topologies data are sent from UCMDDB to OMi properly in different chunks.
QCCR1H105717	When trying to display the probe status from the Data Flow Probe Status page, there is no results for some probes, and the following error is found with the <b>DiscoveryDestDAO.getDisplayLables ForTriggerIds()</b> method in the <b>error.log</b> : 'ORA-01795: maximum number of expressions in a list is 1000'.	Fixed the issue by implementing a code change to split the SQLs if the number of expressions exceeds 1000.
QCCR1H105901	There is a custom rule that creates "Membership" relation between Location and Node CIs based on a custom attribute (building) in CIT Node. But after running the enrichment, no relationship is generated.	Fixed the issue by implementing a code change to improve the data import so that the correct CI type name is used by the enrichment.
QCCR1H105928	UCMDDB to UCMDDB push back global Ids is disrupting the aging on the low level UCMDDB by updating the Last Access Time value.	Fixed the issue by implementing a code change to disable the aging mechanism on the push back flow.
QCCR1H105984	Probe start services sequence is not correct, and probe crashes when AM integration is run.	Fixed the issue by implementing a code change to correct the probe start services sequence.

Global ID	Problem	Solution
QCCR1H106039	When loading the Integration Studio, if there are many integration points, the system takes a very long time to display the user interface.	Fixed the issue by implementing a code change to build cache for queries to reduce query execution.
QCCR1H106079	The SQL DB transaction logs are filling up daily, because the Rebuild indexes job is deactivated and the scheduler recreates it at every restart.	Fixed the issue by implementing a code change so that the Rebuild Indexes job is not recreated during restart and the same instance is kept.
QCCR1H106141	There is no date template "EEE MMM dd HH:mm:ss zzz yyyy" for date values, thus the Solr engine is unable to parse such date format.	Fixed the issue by implementing a code change to add "EEE MMM dd HH:mm:ss zzz yyyy" date parser for logging unparseable dates for search purpose.
QCCR1H106201	(CAC authentication) After upgrading UCMDDB from 10.20 CUP1 to 10.21, the UCMDDB server is unable to complete startup when CRL file path is defined.	Fixed the issue by implementing a code change to add null check for the getCriticalExtensionOIDs () function and fix the logic for the CRL file to work properly.
QCCR1H106327	When any integration job execution causes links to be deleted, link deletion occurs but deletion status of the links is not displayed in the integration job statistics pane.	Fixed the issue by implementing a code change. Now the integration job works properly without causing any deletion.
QCCR1H106371	When the node is discovered by the Host Connection by Shell job, it sets the flag for the <b>host_iscomplete</b> attribute to <b>true</b> , and then when the Host Resources/Applications by Shell job is run, it changes this attribute to <b>false</b> . This is a problem for the Breakdown Report that takes this attribute into consideration.	Fixed the issue by implementing a code change to remove the <b>host_iscomplete</b> condition from the Breakdown Report TQL query.
QCCR1H106428	Data Flow Probe JMX Console should pop up again asking for correct credentials instead of an HTTP 500 error when the password is wrongly entered.	Fixed the issue by implementing a code change so that the probe JMX Console pops up again asking for correct credentials when the password is wrongly entered.
QCCR1H106436	Java fails to finish downloading the Java applet before passing the 30 seconds timeout limit.	Fixed the issue by implementing a code change to set the Idle Timeout in the <b>JettyManager.class</b> class for each server connector to <b>-1</b> .

Global ID	Problem	Solution
QCCR1H106760	Application server is using an optimization technique that is holding static content file handles open. This is preventing content pack documentation files to be updated while UCMDDB server is running.	Fixed the issue by implementing a code change to disable the optimization for the UD Content Pack documentation context.
QCCR1H106762	SiteScope and OMi 10.10 Topology integration is not working because the <b>ythonGlobalLibs.xml</b> file for SiteScope is not properly converted.	Fixed the issue by implementing a code change so that the <b>ythonGlobalLibs.xml</b> file for SiteScope can be properly converted.
QCCR1H106774	DB connections from the pool manager are removed, causing many DB statement to be idle. In the end the number of threads increases and the UCMDDB system becomes unresponsive.	Fixed the issue by implementing a code change to handle the DB connections from the pool manager properly and not removing them when they should not be.
QCCR1H106779	After invoking the <b>startHistoryDB</b> JMX method, the HDM_XXXXX_UNIX_1 and HDM_XXXXX* tables are not dropped.	Fixed the issue by implementing a code change. Now invoking the <b>startHistoryDB</b> JMX method deletes all the history data by dropping the tables, and then the history data is initialized based on the existing CIs.
QCCR1H106844	On UCMDDB 10.22, when setting <b>cryptoSource</b> as <b>windowsDPAPI</b> , instead of <b>Iw</b> , a <code>WebApplicationException</code> error occurs and the <b>LWJDPAPI.dll</b> is never loaded. For LWSSO in UCMDDB server, when using <b>windowsDPAPI</b> as <b>cryptoSource</b> , it uses <b>System.load()</b> routine to load the <b>LWJDPAPI.dll</b> , which requires the absolute full path of the dll file.	Fixed the issue by implementing a code change to use the absolute path for the <b>LWJDPAPI.dll</b> file.
QCCR1H106880	History operation "hist query: get data changes" does not close its attached transaction in the multi-tenancy environment.	Fixed the issue by implementing a code change to the flow for the transaction to be committed and adding more logging to catch similar issues easier in the future. Now the history transaction when viewing CI history can be properly handled in the context of multi-tenancy.
QCCR1H106978	When a non-sysadmin normal LDAP user	Fixed the issue by implementing

Global ID	Problem	Solution
	schedules a topology report, and the user's login name is different from the display name, then the report fails to be generated because the user could not be found.	a code change to replace the <b>getDisplayname</b> method with the <b>getLoginName</b> method.
QCCR1H107107 QCCR1H107142	A few hours after the UCMDDB server restarts, it slows, then stops functioning properly. The only way to get it working again is to restart the server. Performance issues encountered in all aspects: Data-in/Discovery, Enrichments/PBMs, UI access, and Data consumption/Reports.	Fixed the issue by implementing a code change to address the performance issues in all aspects.
QCCR1H107256	Aging fails with error "Oracle JDBC Driver Invalid parameter binding(s)" because three parameters are provided instead of four. In certain scenarios the number of parameters is not properly provided to aging related SQL statement.	Fixed the issue by implementing a code change to provide correct number of parameters to aging related SQL statement.
QCCR1H107363	Threads updating History get stuck, the Complement Layout Operation was running in timeout due to massive changes.	Fixed the issue by implementing a code change to increase Timeout to 4h and add it as explicit for this operation.
QCCR1H107371	Trigger IP cannot be added to WMI Discovery jobs, thus IP could not triggered properly.	Fixed the issue by implementing a code change so that IP could be properly triggered.
QCCR1H107462	UI Packaging is losing selected TQLs due to long loading time, and the Save button is enabled before all resources are loaded.	Fixed the issue by implementing a code change to disable the <b>Save</b> button until all the resources are loaded. While loading is in progress the <b>Save</b> button has a tooltip to inform the user why it is still disabled: "Please wait, some resources are still loading...", which disappears after the resources are successfully loaded.
QCCR1H107487	UCMDDB Browser fails to start after the deployment of UCMDDB 10.21 CUP1. During startup the <b>ucmdb-browser.war</b> resource was being deployed twice and thus failed to be properly deployed.	Documented the following note as a <b>Caution</b> in the Release Notes:  Apart from the OOTB files, DO NOT ADD any additional resources into the <b>&lt;UCMDDB_Server_Home&gt;\deploy</b>

Global ID	Problem	Solution
		directory. Because UCMDB will try to deploy every file from this location, which may cause the <b>ucmdb-browser.war</b> file not deployed completely, and as a result the UCMDB Browser will fail to start.
QCCR1H107590	The SM-UCMDB integration ignores class conditions and throws exceptions when two or more TQL queries matching a same CI are found.	Fixed the issue by implementing a code change. Now the SM-UCMDB integration filters class conditions when multiple TQL queries matching a same CI are found and executes those multiple TQL queries.
QCCR1H107669	The user cannot log in to the UCMDB 10.22 when the login name is an email address.	Fixed the issue by implementing a code change so that now the user can successfully log in to the UCMDB 10.22 when the login name is an email address.
QCCR1H107675	Users are unable to create an enrichment, the dialogue always says that you need to enter a valid rule name even when a valid name is entered. When creating a new enrichment, a list with TQL queries is retrieved from the UCMDB server for a unique and a correct name. However, because of some corrupted TQL queries, the UCMDB server throws an exception that was not caught.	Fixed the issue by applying a code change to catch the exception. Now users are able to create new enrichments successfully.
QCCR1H107745	When processing discovery results, all datain operation failed with <code>java.lang.StackOverflowError</code> , causing UCMDB Server restart.	Fixed the issue by implementing a code change. Now there is no such UCMDB server performance issue.
QCCR1H107875	IT Universe Manager cannot keep the position of the attributes about column configuration in text mode.	Fixed the issue by applying a code change. Now column layout configuration stored in user preferences is no longer overwritten.
QCCR1H108223	After upgrading UCMDB to version 10.22 CUP1, the <b>Is Candidate for Deletion</b> status cannot be synchronized with the Push Flow.	Fixed the issue by applying a code change to detect the Data Push Flow and to ignore the set of <b>Is Candidate for Deletion</b> . Now the <b>Is Candidate for Deletion</b> status can be synchronized with

Global ID	Problem	Solution
		the Push flow.
QCCR1H108541	UCMDB does not consider APM root context in case of distributed environment.	Fixed the issue by implementing a code change, so that the system takes into account root context.
QCCR1I118719	(APM 9.30 RTSM) If the Discovery Control Panel is accessed without a license, then Integration Studio is loaded instead.	Fixed the issue by applying a code change. Now when the Discovery Control Panel is accessed with a license, then the module will be available and all the discovery jobs are visible; if no license, a message will be displayed: 'No Discovery license is available'.

## Fixed Defects for UCMDB 10.22 CUP1

The following table lists the defects that were fixed in the UCMDB 10.22 CUP1 release.

Global ID	Problem	Solution
QCCR1H99940 QCCR1H100476	In certain circumstances, database deadlock occurs in log files when multiple threads try to update records in different orders.	Fixed the issue by using row locks so that no deadlock occurs.
QCCR1H100082	Some jobs are scheduled to send reports via email, the job history seems perfect, but the emails users received have no attachments.	Fixed the issue by implementing a code change. Now before sending an email to recipients, empty email addresses are removed, and then the email will be sent to the remaining email addresses.
QCCR1H100903	Displaying a specific view crashes the UCMDB server. This is because too many nodes were returned by the view that caused many more number of meta links generation and crashed the system with OutOfMemory.	Fixed the issue by implementing a code change to calculate inter layer links only if the view's objects count is less than the maximum value that the map can show (Max Object Count GUI For TS).  In case of views with huge number of nodes and relations, you may also increase the memory of the UCMDB server and the applet. For more details, see <a href="#">QCCR1H106088</a> .

Global ID	Problem	Solution
QCCR1H101054	After saving a view using the "Save As" option, the view becomes not editable.	Fixed the issue by implementing a code change to drop the automatic open after save as action. Users can manually open the saved views without any issue.
QCCR1H101061	When using a time period of around one week for the change report, it seems like one of the end points does not exist in the history table, and the change report fails.	Fixed the issue by implementing a code change to display an ERROR message in the log file that the CI Change Report contains inconsistent CIs.  To display the ERROR message with IDs of inconsistent CIs, set <b>loglevel=INFO</b> in the <b>&lt;UCMDB_Server_Home&gt;\conf\log\ui-server.properties</b> file.
QCCR1H103374	Without granting the user the Administration rights, the user couldn't see the scheduler tasks in the Scheduler. It's empty.	Fixed the issue by implementing a code change, now the user without the Administration rights is able to see the Scheduler and the scheduled tasks.
QCCR1H103549	After applying the TCP package to support the ASM feature, probes crash when creating core dumps and getting disconnected with the UCMDB server.	Fixed the issue by applying a code change.
QCCR1H104139	When accessing a CI from UCMDB UI, the last item on the context menu for the CI is Open UCMDB Browser. This should open UCMDB Browser and details to that CI should appear. When using a corporate proxy to connect to the UCMDB web pages this menu item is not working and a "Ucldb Browser is not connected to the server" message pops up.	Fixed the issue by implementing a code change to use HTTPS connection for the socket to detect if the URL is available. This is applicable only when the UCMDB Browser is configured to use HTTPS.
QCCR1H104234	Users see many <b>handlers.SecurityHandlersException</b> messages in the <b>probe-error.log</b> for one of their probes.	Fixed the issue by implementing a code change so that the <b>handlers.SecurityHandlersException</b> messages are not shown in the probe log anymore.
QCCR1H104237	NNMi Pull_Layer2 Topology Import from NNMi fails with NullPointerException.	Fixed the issue by implementing a code change. Added null check to avoid NullPointerException. The population now works properly.



Global ID	Problem	Solution
QCCR1H104375	XML Enricher does not properly process scan files without executable signatures. When processing the scan files, many normalized applications are not reported in the Installed Software CIs list.	Fixed the issue by implementing a code change to the XML Enricher logic.
QCCR1H104584	In the Discovery Status, total and detailed counts for warnings and errors do not match, more errors are in the main view than in the detailed view.	Fixed the issue by implementing a code change to display correct amount of errors.
QCCR1H104730	The <b>Inventory Discovery by Scanner</b> job cannot be triggered, and there is no information about the Inventory Discovery by Scanner job in the ViewJobStatuses output in the UCMDB UI. The root cause for the issue is that incomplete CIs are imported into UCMDB Server.	Fixed the issue by implementing a code change to allow the Inventory discovery by scanner job to trigger properly.
QCCR1H104793	The UCMDB-SM integration is not bringing federated CIs if the reconciliation CIT is not specified in <b>serviceDeskConfiguration.xml</b> .	Fixed the issue by implementing a code change. For the fix to work properly, make sure you add the following line into the <b>serviceDeskConfiguration.xml</b> file manually: <pre>&lt;reconciliationClassConfiguration&gt;ucmdbClassName="nt" &lt;/reconciliationClassConfiguration&gt;</pre>
QCCR1H104917	Saving a view with a new name results in loss of Report Layout for Group by CI Type.	Fixed the issue by implementing a code change to keep the report layout while saving a view.
QCCR1H105023	The UCMDB <b>error.log</b> often shows the "Unauthorized access at entry point" error (but not only for this user). However the user is not aware of any user authentication related problems.	Fixed the issue by implementing a code change. Now all users have the access right if they passed the authentication.
QCCR1H105030	The probe manager in separate mode cannot be switched to the FIPS mode automatically.	Fixed the issue by implementing a code change. Now in separate mode, after the probe gateway finishes downloading jars, a notification will be sent to the probe manager

Global ID	Problem	Solution
		automatically.
QCCR1H105110	Version 10.10 probes appear to corrupt the PostgreSQL database under normal discovery loads. The root cause is that when Anti-Virus is scanning the PostgreSQL data folder, it could corrupt the PostgreSQL tables.	Added the workaround into the Release Notes. For details, see <a href="#">QCCR1H105605</a> .
QCCR1H105257	Users experience poor performance, especially the Generic Database Adapter (GDBA) integrations running in full synchronization mode take extremely long time to finish.	Fixed the issue by implementing a code change to improve and enhance the performance.
QCCR1H105269	Slow performance with scheduled reports. If the client and the server are in different time zones then the reports are wrongly inserted in the Job List Window.	Fixed the issue by implementing a code change. Now a new method was added in order to properly convert server time zone into client time zone.
QCCR1H105294	Running multiple AM computer push jobs in parallel completes with failure rate of 6% to 8%, while less than 1% failure rate on running a single push job at a time. Most of the failures are caused by the following <b>java.lang.RuntimeException</b> error:  ... 'execAql' exception: 'Error (12,011): Oracle error: ORA-00001: unique constraint (ACAPP.ASGMT_CMDBID) violated  Index error: A record in table 'Portfolio items (amPortfolio)' with the value '<hidden>' for field 'uCMDB identifier (CMDBId)' already exists in the database.'	Fixed the issue by implementing a code change to made the code thread safe.
QCCR1H105314	The discovery analyzer does not work. During startup, it shows error: Failed creating DBServices for ProbeMgrDBServicesFactory!!	Fixed the issue by implementing a code change to the cmd script.
QCCR1H105315	The <b>Show Properties</b> button is available even though the Properties Menu Item is disabled in Roles for that CIT in some UI modules.	Fixed the issue by implementing a code change to ensure that the <b>Show Properties</b> button is disabled if the user does not have the right permissions for

Global ID	Problem	Solution
		the selected CI.
QCCR1H105591	The installation of the UCMDB Browser 4.03 on the UCMDB server causes a performance issue for both the UCMDB Server and the UCMDB Browser.	Fixed the issue by adding the following line to the <b>&lt;UCMDB_Server_Home&gt;\bin\wrapper.conf</b> file: <pre>wrapper.java.additional.120=-Dcom.sun.xml.bind.v2.bytecode.ClassTailor.noOptimize=true</pre>
QCCR1H105593	The <b>getDestinationDataMap</b> method of the Environment interface introduced for content validators to access job parameters did not work correctly.	Fixed the issue by implementing a code change to fix the logic. Now the <b>getDestinationDataMap</b> method of the Environment interface works as expected.
QCCR1H105623	When trying to create a VMware Host Report, it fails with a NullPointerException and the report is not generated.	Fixed the issue by implementing a code change. Now the VMware Host Report can be properly generated.
QCCR1H105639	Once started running the host resources discovery jobs, the HPROF files are created in the <b>&lt;UCMDB_Server_Home&gt;\bin</b> directory. The History service tried to log a huge size of hash map which caused JVM OutOfMemoryError.	Fixed the issue by implementing a code change, now the OutOfMemoryError message will not appear in the log and the HPROF files will not be created anymore.
QCCR1H105818	SiteMinder with AJP does not work any more starting from UCMDB 10.21, because Jetty does not support it. That is why after upgrading to UCMDB version 10.21, the UCMDB integration with SiteMinder with IIS as a front-end will fail.	Documented this limitation in the Release Notes. See <a href="#">Known Problems, Limitations, and Workarounds</a> .
QCCR1H105821	(Oracle database only) Duplicated Java processes are found after running the discovery job.	Fixed the issue by implementing a code change to increase the Oracle DB type CREATE OR REPLACE TYPE VARCHAR2_TABLE IS TABLE OF VARCHAR2(3950) from 300.
QCCR1H105888	When Configuration Manager is implemented with an F5 LB and WebSEAL junction, login to CM via WebSEAL server fails for LDAP	Fixed the issue by implementing a code change to adjust the internal URL.

Global ID	Problem	Solution
	accounts with MDSSO and WebSEAL errors.If CM is behind a proxy and the external URL differs from the internal URL, connection to CM does not work for HTTPS.	
QCCR1H106092	After implementing manual High Availability Cluster (HAC) failover of platform, an HTTP 503 Issue (Service Unavailable) was received. The HAC services successfully moved and started on the backup DPS server (and RTSM service as well), but RTSM on gateway still tried to connect to the primary DPS which was no longer running HAC services (RTSM was down).	Fixed the issue by implementing a code change to provide support for manual HAC failover.
QCCR1H106398	When multiple threads try to modify the same domain document concurrently, credentials mappings saved in the domain document might get removed.	Fixed the issue by implementing a code change to fix the logic.
QCCR1H107745	When processing discovery results, all datain operation failed with java.lang.StackOverflowError, causing UCMDB Server restart.	Fixed the issue by implementing a code change. Now there is no such UCMDB server performance issue.

## Documentation Errata

The following items are listed incorrectly in the documentation.

### *Hardening section of the UCMDB Help*

---

#### **No information about the UCMDB-API client certificate key size**

**Location:** *Hardening section of the UCMDB Help*, version 10.21, page 30 (QCCR1H102759)

**Error:** There is no information about the minimum key size for the UCMDB-API client certificate.

**Correction:** Add the following note under the *Enable Mutual Certificate Authentication for SDK* section:

**Note:** The UCMDB-API client certificate must have the minimum key size of no less than 2048 bits.

---

**The LDAP Search User setting value should be the full user name only**

**Location:** *Hardening section of the UCMDB Help*, version 10.22, page 131

**Error:** In the LDAP Authentication Settings - Example table, the example value for the **LDAP Search User** setting is as follows:

CN=John Doe,OU=Users,OU=Dept,OU=US,DC=example,DC=com

Actually only the full user name is needed.

**Correction:** Change the example value for the **LDAP Search User** setting to the following: Full user name, for example, John Smith

---

# Appendices

This appendix includes:

Enable postgresql.log File Rotation .....	62
Disable Call Home from Data Flow Probe .....	63
How to Enable Reconciliation Log Only for Specific Data in a Job .....	64
How to Disable Remote Access to the Probe JMX Console .....	65
How to Set UCMDB Server Time, Change Time Zone Setting, or Correct System-induced Clock Drift .....	65
How to Increase the Number of Threads for Data Push Jobs .....	66
How to Enable CI Type Tenant Owner Verification during the Matching Phase of Identification ...	68
How to Calculate Hash Code for JARs with Annotation .....	72
How to Increase the Java Heap Memory Used by the UCMDB UI Java Applet .....	73
How to Limit the XML Enricher Port to Allow Local Connection Only .....	75
How to Prevent Custom CI Attributes Values from Being Updated by Default Values During Reconciliation .....	76
mam.dispatch.log .....	76
How to Disable Updating Last Access Time of Linked CIs during CI Merge Process .....	77
Enable the Start Assisted Modeling link in UCMDB Browser for specific users .....	78
How to Disable the Sorting of IDs during the CI Merge Process .....	79

## Enable postgresql.log File Rotation

To enable postgresql.log file rotation on Data Flow Probes, follow these steps:

1. Add the following code to `<DataFlowProbe_install_dir>\conf\log\probeGwLog4j.properties`:

```
#####
##
#####      postgresql      log
#####

#####
##
```

```
log4j.category.postgresql.loghelper=INFO, PGSQL_LOG_HELPER
log4j.appender.PGSQL_LOG_HELPER=com.hp.ucmdb.discovery.library.dblayer.SizeBasedRollingFileAppender
log4j.appender.PGSQL_LOG_HELPER.File=${logs.dir}/postgresql.log
log4j.appender.PGSQL_LOG_HELPER.Append=true
log4j.appender.PGSQL_LOG_HELPER.MaxFileSize=20MB
log4j.appender.PGSQL_LOG_HELPER.Threshold=INFO
log4j.appender.PGSQL_LOG_HELPER.MaxBackupIndex=10
log4j.appender.PGSQL_LOG_HELPER.layout=org.apache.log4j.PatternLayout
log4j.appender.PGSQL_LOG_HELPER.layout.ConversionPattern=&lt;%d&gt; [%-5p] [%t]
(%F:%L) - %m%n
log4j.appender.PGSQL_LOG_HELPER.encoding=UTF-8
```

2. Configure the value of the *MaxFileSize* variable to set the maximum size for each log file. In the code above, the variable is set to 20MB.
3. Configure the value of the *MaxBackupIndex* variable to set the maximum number of log files permitted before log rotation begins. In the code above, the variable is set to 10 files.
4. Restart the UCMDDB\_Probe and UCMDDB\_Probe\_DB services.

## Disable Call Home from Data Flow Probe

This task describes how to disable the Call Home feature in Data Flow Probe, which also frees port 80. This makes port 80 available if you need to use it for other purposes.

To disable the call home function in Data Flow Probe, follow these steps:

1. On the Data Flow Probe, locate the **DataFlowProbe.properties** file in the **C:\hpc\UCMDDB\DataFlowProbe\conf** folder, and then open the file using a text editor.
2. Add the following line to the file:

```
appilog.agent.callhome.enabled=true
```

The default value for the setting is **true**, which means that the call home function is enabled and the call home port is open.

To disable the call home function, set the value to **false**.

3. Save the file, and then restart Data Flow Probe.

# How to Enable Reconciliation Log Only for Specific Data in a Job

The new JMX method **setDebugReconciliationforJobName** introduced in the **UCMDB:service=Reconciliation Services** category allows you to enable logging reconciliation debug information for specific data in a job to a new log file **cmdb.reconciliation.jobName.log**.

To enable the reconciliation debug log for a specific job, do the following:

1. On the UCMDDB server, launch the Web browser and enter the following address:  
**https://localhost:8443/jmx-console**  
  
You may have to log in with a user name and password.
2. Locate the **setDebugReconciliationforJobName** operation in the **UCMDB:service=Reconciliation Services** category and click the link to open the JMX MBean View.
3. Specify the following parameters of the method:
  - **customerId**: Specify the Customer ID (leave empty for the default customer)
  - **jobName**: Enter the job name for which you want to set to enable reconciliation debug log.

Make sure you enter the exact job name as it appears in the **cmdb.reconciliation.audit.log** file. For example,

```
... INFO - [ID=1861133198] [Customer ID=1] [Changer=UCMDBDiscovery:
AutoDiscovery JMX]
... INFO - [ID= 691646277] [Customer ID=1] [Changer=Enrichment:
Enrichment's rule: add]
... INFO - [ID=1267951912] [Customer ID=1] [Changer=UCMDB:
User:admin,LoggedInUser:admin]
```

**Note:** To disable this mechanism, leave the **jobName** value field empty.

Or, you can also disable this mechanism by setting the following log level to INFO (present in the **\conf\log\reconciliation.properties** file):



```
log4j.category.cmdb.reconciliation.jobName.log=INFO
```

4. Click **Invoke**.

## How to Disable Remote Access to the Probe

### JMX Console

In version 10.22 CUP4, it is possible to secure access to the probe JMX console to the probe server localhost only.

To disable remote access to the probe JMX console,

1. Access the machine from localhost where the probe is installed.
2. Locate and open the `<DataFlowProbe_Home>\conf\DataFlowProbe.properties` file using a text editor.
3. Add the following line to the file:

```
appilog.collectors.jmx.remote.access = false
```

4. Save the file.
5. Restart the probe for the change to take effect.

## How to Set UCMDDB Server Time, Change Time Zone Setting, or Correct System-induced Clock Drift

**Note:** UCMDDB server (also all HA nodes servers) and the database server should be based on UTC time. This helps preventing issues caused by time zone and daylight savings time changes.

When changing the UCMDDB server system time backward or forward on the database server, administrators should follow a scenario that eliminates risk of unresponsive servers and/or data inconsistencies (for both standalone or high-availability based UCMDDB systems).

To do so,

1. Stop UCMDB server.

In case of cluster environment, stop all the nodes.

2. Perform actions needed to change the system time.
3. On the UCMDB server machine, execute the following command:

- **Windows:** Go to the **C:\UCMDB\UCMDBServer\tools\dbscripts** folder, and run the following command from command prompt:

```
dbtool resetClusterConf
```

- **Linux:** **/opt/UCMDB/UCMDBServer/tools/dbscripts/dbtool.sh resetClusterConf**

4. Restart UCMDB server.

## How to Increase the Number of Threads for Data Push Jobs

Version 10.22 CUP2 introduced a new JMX setting

**com.hp.ucmdb.synchronizer.manager.SynchronizerManagerFactory**, allowing you to increase the number of threads for data push jobs from the out-of-the-box value **3** to any desired value.

## How to increase the number of threads for data push jobs

**Note:** Apply this change for large UCMDB deployments where the hardware resources for UCMDB server and data flow probe are assigned as documented in the *Sizing section of the UCMDB Help*.

To do so,

1. Log in to the UCMDB JMX console. (Launch the Web browser and enter the following address: **https://<server\_name>:8443/jmx-console**. You may have to log in with a user name and password.)
2. Enter **setInternalSetting** in the Quick Search field and click the link that appears with the **UCMDB:service=Settings Services** category.

3. Invoke the **setInternalSetting** JMX method with the following parameters:
  - **customerID**: Enter your Customer ID. (**Default: 1**)
  - **key**: Enter **com.hp.ucmdb.synchronizer.manager.SynchronizerManagerFactory**.
  - **value**: Enter a desired value as the number of threads for push jobs. (**Default: 3**).
4. Double check the value set by invoking the **getInternalSettings** JMX method.  
The returned result contains the **com.hp.ucmdb.synchronizer.manager.SynchronizerManagerFactory** setting and its value.
5. Restart the UCMDB Server.
6. The new value is loaded successfully if you see the following message logged in the **startup.log** file:

```
The number of threads for manager  
com.hp.ucmdb.synchronizer.manager.SynchronizerManagerFactory was overridden  
to ...
```

**Note:** The **startup.log** file is located in the `<UCMDB_Install_dir>\runtime\logs\` directory.

## Revert the change

To revert the change and use the default value,

1. Perform either of the following from the UCMDB JMX console:
  - Invoke the **setInternalSetting** JMX method with the following parameters:
    - **customerID**: Enter your Customer ID. (**Default: 1**)
    - **key**: Enter **com.hp.ucmdb.synchronizer.manager.SynchronizerManagerFactory**.
    - **value**: Enter the default value **3**.
  - Delete the new setting by invoking the **listResources** method from the **UCMDB:service=URM Services** category.

If you delete the new setting, UCMDB will use the hard-coded default value.

To do so,

- i. Enter **listResources** in the Quick Search field and click the link that appears with the **UCMDB:service=URM Services** category.

- ii. Invoke the **listResources** method with the following parameters:
    - **customerID**: Enter your Customer ID. (**Default: 1**)
    - **resourceType**: Enter **Settings\_STATE\_CUSTOMER\_SETTING**.
  - iii. On the returned result page, click **delete** for the **com.hp.ucmdb.synchronizer.manager.SynchronizerManagerFactory** setting.
2. Restart the UCMDB Server for the change to take effective.

## How to Enable CI Type Tenant Owner Verification during the Matching Phase of Identification

You can dynamically add a verification criterion based on the **TenantOwner** attribute during the matching phase of the identification process for CIs by using the new JMX setting **reconciliation.tenantaware.citypes**. If, compared to the other CI, there is a different value among the CI attribute values defined in this setting, the verification process stops and the match is rejected.

The following example explains how this setting works:

- If you have two node CIs:
  - Node1 with **TenantOwner**=t1 and **name**=n
  - Node2 with **TenantOwner**=t2 and **name**=n
  - **reconciliation.tenantaware.citypes** set to **node**

This scenario will result in the two nodes not matching.

- If Node1 does not have **TenantOwner** set, the default Tenant will be provided.

**Note:** If you add a node CIT, UNIX for example, you do not have to add it since it is inherited by identification rule. Only if you change the UNIX CIT identification rule, you need to add it explicitly.

**To enable TenantOwner attribute verification for CITs that are identified by key attributes,**

1. Add the **ID\_ATTRIBUTE** qualifier for the **TenantOwner** attribute of the **managed\_object** CIT.

**Note:** The **TenantOwner** attribute will be inherited to all the child classes. Make sure that a child class does not override it.

- a. Go to the **JMX console > UCMDB:service=URM Services**.
- b. Invoke the **listResourceTypes** method.
- c. On the returned page, click **CM\_CLASS**, then click **managed\_object**.
- d. In the Resource XML box, add the following attribute qualifier to the **TenantOwner** attribute:

```
<Attribute-Qualifier name="ID_ATTRIBUTE" is-factory="true" is-user-  
modified="true" version="15" >  
  <Data-Items/>  
</Attribute-Qualifier>
```

- e. Click **Save resource**.
2. Invoke the JMX method **updateClassModel** to update the class model (go to the **JMX console > UCMDB:service=Class Model Services**, and invoke the **updateClassModel** method with **1** in the **Value** field for customerID).
  3. Reload the class model from persistency (go to the **JMX console > UCMDB:service=Class Model Services**, and invoke the **reloadClassModelFromPersistency** method).
  4. Go to **JMX console > UCMDB:service=Model Services**, invoke the **recalculateID** method with **classname** field empty.

This may take a while as it updates the calculated IDs for all instances of the classes with key attributes identification.

**To enable the reconciliation.tenantaware.citypes setting for specific CITs (separated by comma) that are identified based on identification rules,**

1. Go to **JMX Console > UCMDB:service=Settings Services > setSettingValue**.
2. In the **name** field, enter **reconciliation.tenantaware.citypes**.
3. In the **value** field, enter names of the CITs, separated by comma.

**Note:** To disable this setting, leave the **value** field empty.

4. Click **Invoke**.

**To enable the `reconciliation.tenantaware.citypes` setting for all the CITs that are identified based on identification rules,**

1. Go to **JMX Console > UCMDB:service=Settings Services > setSettingValue**.
2. In the **name** field, enter **`reconciliation.tenantaware.citypes`**.
3. In the **value** field, enter **\***.
4. Click **Invoke**.

**Note:**

- If you changed the Tenant ID on the Data Flow Probe, make sure you clear the probe cache as well by performing either of the following:
  - Log in to the probe server, run the following script:  
**Windows:**`\UCMDB\DataFlowProbe\tools\clearProbeData.bat`  
**Linux:**`/UCMDB/DataFlowProbe/tools/clearProbeData.sh`
  - Log in to the UCMDB server UI, go to **Data Flow Management > Universal Discovery > Discovery Modules/Jobs**. For each of the jobs that run on the probe, right-click the job and select **Clear Probe Results Cache**.
- In a multi-tenant aware environment, a tenant must be specified for the Data Flow Probe.

## Tenant Owner Related Known Issues, Problems, and Workaround

---

**PROBLEM:** After switching to Tenant aware reconciliation, the **OwnerTenant** attribute becomes read-only in the Configuration Item Properties dialog.

**Workaround:** Use **Assign Tenants** functionality from the CI's context menu.

---

**PROBLEM:** After removing the **Key Attributes** qualifier from the **OwnerTenant** attribute of the Managed Object, sometimes no properties are displayed for the CIs in UI.

All the properties exists in DB but just that they are not displayed in UI.

**Workaround:** If you want to switch back (to disable Tenant aware reconciliation), do the following:

1. Remove the **ID\_ATTRIBUTE** qualifier for the **TenantOwner** attribute on the **managed\_object** CIT.
2. Remove the value of the **reconciliation.tenantaware.citypes** setting.
3. Reload the class model from persistency (go to the **JMX console > UCMDB:service=Class Model Services**, and invoke the **reloadClassModelFromPersistency** method).
4. Go to **JMX console > UCMDB:service=Model Services**, invoke the **recalculateID** method with **classname** field empty.

**Caution:** Do not invoke the **updateClassModel** method for this workaround. Otherwise it removes the **TenantOwner** attribute.

---

**LIMITATION:** Enrichment is not invoking the Reconciliation on Update **OwnerTenant** via **Associate Tenant Rule**. As a result, you may have duplicated data in the system in case if you update the **OwnerTenant**'s CI to a tenant that already has this CI.

**Workaround:** None.

---

**LIMITATION:** CIs with Identification rule would be duplicated in case if the user is updating the **OwnerTenant** CI to a tenant that already has this CI from **Update OwnerTenant** in the **Assign Tenants** module.

**Workaround:** None.

---

**PROBLEM:** When removing all Consumer Tenants from a CI (from the IT Universe), an error is thrown and the Owner Tenant is overwritten with the System Default Tenant.

**Workaround:** To avoid removing the System Default Tenant from the Consumer Tenants list, make sure you set the System Default Tenant as consumer.

Only when the System Default Tenant is not set as consumer, the Owner Tenant will be overwritten with the System Default Tenant when trying to save.

---

**PROBLEM:** Error message received when setting up a tenant aware environment, for the OOTB enrichments which are adding CIs. (QCCR1H104949)

**Workaround:** If there are enrichments which are creating new CIs, after setting the environment as tenant aware, the attribute **Owner tenant** should be set for those CI Types which are being created through enrichments.

## How to Calculate Hash Code for JARs with Annotation

Starting from UCMDB version 10.22 CUP1, it is possible to provide support for the application signature using the annotation in the CyberArk integration class.

To calculate the Hash Code for JARs with annotation,

1. Generate the application hash value by running the following command.

```
java -Xms500m -Xmx1200m -jar JavaAIMGetAppInfo.jar GetHash
/AppExecutablesPattern="C:\hp\UCMDB\DataFlowProbe\lib"
/OnlyExecutablesWithAIMAnnotation=yes /LogFileDirectory="c:\temp"
```

Note that the above command is an example, which might need to be updated according to your environment, the installation location of the UCMDB Server, and so on.

2. Add the newly generated hash value to the application authentication.

### Troubleshooting

**PROBLEM:** When running discovery jobs or checking credentials, the following error occurs: "Failed to verify application authentication data: Hash XXX is unauthorized." This is caused by inconsistent hash values between UCMDB and CyberArk Server.



```
at con.hp.ucmdb.discovery.probe.tools.CyberArkVaultTool.main(CyberArkVaultTool.java:113)
Caused by: class javapasswordsdk.exceptions.PSDKException: APPAP133E Failed to verify application authentication data: Hash "39D6CB2233F6853FE78816EF4A245597561722F" is unauthorized
at javapasswordsdk.passwordsdk.getPassword(passwordsdk.java:37)
at sun.reflect.NativeMethodAccessorImpl.invoke0(Native Method)
at sun.reflect.NativeMethodAccessorImpl.invoke(NativeMethodAccessorImpl.java:62)
```

**Workaround:** Check if the hash value is the same as the one you configured on the CyberArk server. If different, regenerate the hash value and then fill the new hash value in the CyberArk server.



# How to Increase the Java Heap Memory Used by the UCMDB UI Java Applet

This can be done using one of the following two methods:

- [Editing the JSP File](#)
- [Editing the Control Panel Java Settings](#)

## Editing the JSP File

This change affects all applets launched from the Internet browsers on all different computers from where the UCMDB UI is accessed.

To perform the change on the UCMDB server computer, do the following:

1. Stop the UCMDB Server.
2. Increase UCMDB server's memory.
  - a. Open the **<UCMDB\_Server\_Home>\bin\wrapper-platform.conf** file.
  - b. Change the values for **wrapper.java.initmemory** and **wrapper.java.maxmemory** to 4GB or greater as follows:

```
wrapper.java.initmemory=4096  
wrapper.java.maxmemory=4096
```

- c. Save the file.
3. Increase UCMDB Applet's memory.
    - a. Open the **<UCMDB\_Server\_Home>\deploy\ucmdb-ui\applet\applet.jsp** file.
    - b. Change the **java\_arguments** parameter value to specify the amount of memory in megabytes, for example, to use 1280 MB, change it as follows:

```
<param name="java_arguments" value="-Xmx1280m -Xms1280m">
```

- c. Delete all files in the following folders:

*UCMDB 10.22 or earlier:*

- <UCMDB\_Server\_Home>\runtime\jetty-cache\
- <UCMDB\_Server\_Home>\runtime\jsp\

*UCMDB 10.30 or later:*

- <UCMDB\_Server\_Home>\runtime\jetty-cache\

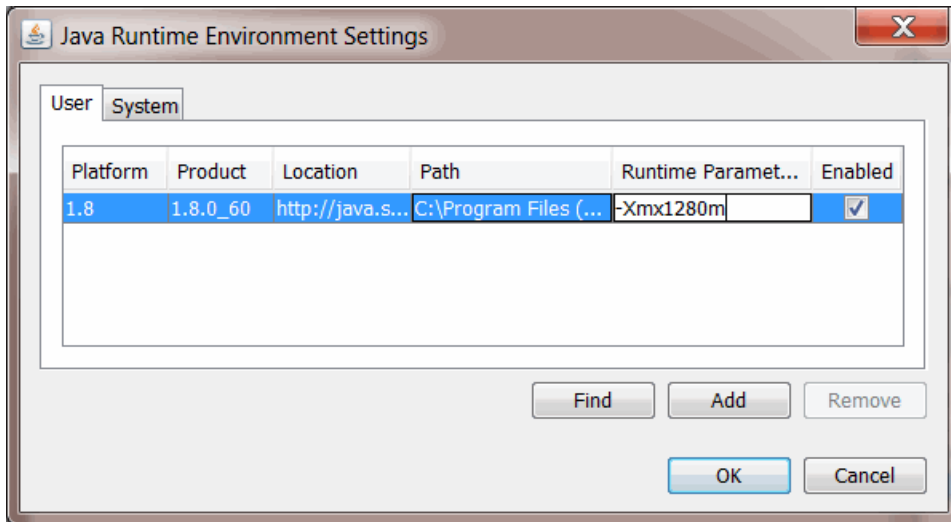
4. Start the UCMDB Server.

## Editing the Control Panel Java Settings

This change only takes effect on the computer on which the Internet browser that is used to access the UCMDB UI is run.

To perform the change on the computer which is used for accessing the UCMDB UI, do the following:

1. From the **Start** menu, search **Java**.
2. Click **Configure Java**.
3. In the Java Control Panel, go to the **Java** tab, and click **View**.
4. In the Java Runtime Environment Settings dialog, double-click the value field for the **Runtime Parameters** column, and enter the amount of memory in megabytes in the `-Xmx` command line switch, for example, `-Xmx1280m`.



5. Click **OK**.

6. Click **Apply** and then click **OK**.
7. Close all open Internet browser windows and restart the UCMDB UI.

## How to Limit the XML Enricher Port to Allow Local Connection Only

The port 34545 only listens on localhost when a Data Flow Probe is newly installed. However, for Data Flow Probes upgraded to the latest version, to limit the XML Enricher port to allow local connection only, you need to perform a manual step.

To do so,

1. On the Data Flow Probe machine, locate the **WrapperEnricher.conf** file in the following folder:  
**c:\hp\UCMDB\DataFlowProbe\bin\xmlenricher**
2. Open the file in any text editor.
3. Add the following setting to the **wrapperEnricher.conf** file manually.

```
# Make rmi listen on localhost only  
wrapper.java.additional.<the number>=-Djava.rmi.server.hostname=localhost
```

**Note:** Make sure this line is added to the end of settings starting with **wrapper.java.additional**.

For subsequent settings, make sure you manually adjust the value of *<the number>* part so that they are properly numbered.

4. Save the file.
5. Restart the Data Flow Probe.

# How to Prevent Custom CI Attributes Values from Being Updated by Default Values During Reconciliation

Previously, during reconciliation, by default Universal Discovery updates custom CI attributes values filled manually or by an integration with the values it discovered. For example, when the default value of a CI property is not NULL, like "N/A" , then if the incoming value equals "N/A" , Universal Discovery will update the existing value of this CI property in the database with the default value.

Now if you want to keep custom CI attributes values, you can change the **enable.default.value.update** setting to **false** (default value: **true**). Then the validation logic works as follows:

If:

- **enable.default.value.update** is **false**
- The CI property is required and its default value is not null
- The incoming value of the CI property equals the default value

Then:

Universal Discovery will not update the incoming value to the database. The custom value of the CI property will not be overwritten.

To set **enable.default.value.update** to **false**, do the following:

1. Go to **JMX Console > UCMDB:service=Settings Services > setSettingValue**.
2. In the **name** field, enter **enable.default.value.update**.
3. In the **value** field, enter **false**.
4. Click **Invoke**.
5. Restart the UCMDB server service.

## mam.dispatch.log

Contains all the dispatch related information.

To enable this log,

1. Locate and open the `<UCMDB_Server_Home>/conf/log/mam.properties` file.
2. Manually add the following settings into the `mam.properties` file:

```
log4j.category.mam.dispatch=${loglevel}, mam.dispatch.appender
#####
##   mam.packaging                ##
#####

log4j.appender.mam.dispatch.appender=com.mercury.topaz.cmdb.shared.base.log.
BetterRollingFileAppender

log4j.appender.mam.dispatch.appender.File=${logs.dir}/mam.dispatch.log

log4j.appender.mam.dispatch.appender.MaxFileSize=${def.file.max.size}

log4j.appender.mam.dispatch.appender.MaxBackupIndex=${def.files.backup.coun
t}

log4j.appender.mam.dispatch.appender.layout=org.apache.log4j.PatternLayout

log4j.appender.mam.dispatch.appender.layout.ConversionPattern=${msg.layout}
```

3. Save the file.

## How to Disable Updating Last Access Time of Linked CIs during CI Merge Process

Sometimes when one CI is merged with another CI, the **Last Access Time** attribute of linked CIs is also updated. You may not want the **Last Access Time** attribute of the linked CIs updated if they are fetched from the database during the merge process and they are unchanged.

To disable updating the **Last Access Time** attribute of linked CIs during merge of CIs, do the following:

1. On the UCMDDB server, go to **JMX Console > UCMDDB:service=Settings Services > setSettingValue**.
2. In the **name** field, enter **CIT.notfrombulk.notupdatetime**.
3. In the **value** field, enter the name of the CI Type for the CI of your interest which you do not want to update its Last Access Time attribute.

**Note:** All sub types of the CI Type you specified here would be affected.

4. Click **Invoke**.

**Note:** By default this feature is disabled. If you do not want this feature at all, you can remove the **CIT.notfrombulk.notupdatetime** parameter. To do so, simply invoke the **removeSetting** JMX method.

## Enable the Start Assisted Modeling link in UCMDB Browser for specific users

In some cases, you may wish to grant users access to the Service Modeling module in UCMDB Browser, but not to Assisted Modeling. To enable this functionality, a new **AssistedModelingVisible** infrastructure setting control is introduced. This allows you to grant or revoke access to Assisted Modeling to different user roles, which will enable or disable the Start Assisted Modeling link in the Service Modeling module.

If you are upgrading to this version of UCMDB, you must manually grant access to Assisted Modeling to each user role. To do this, follow these steps:

1. Go to **UCMDB UI > Administration > Infrastructure Settings Manager**, locate the **AssistedModelingVisible** setting, and set its value to **true**.
2. Log in to the UCMDB JMX console. For details, see *How to Access the JMX Console in the Administer section of the UCMDB Help*.
3. In the UCMDB JMX Quick Search box, enter **listResourceTypes**.
4. Enter your Customer ID. (**Default: 1**)
5. Click **Invoke** to display the **URM Services** mbean.
6. Select **Auth\_ROLE** to display the list of roles.
7. Click the Resource ID that corresponds to the user role to which you want to grant permission to access Assisted Modeling, and then add the following lines of code to the resource XML:

```
<xmlGlobalPermittedAction>ASSISTED_MODELING</xmlGlobalPermittedAction>  
  
<xmlGlobalPermittedAction>EXPORT_REPORT</xmlGlobalPermittedAction>
```

8. Click **Save resource** to apply your changes.

# How to Disable the Sorting of IDs during the CI Merge Process

By default, UCMDB uses IDs to sort and merge bulk CIs during reconciliation. Therefore, TempObjects are always the last objects to update a property. However, when you merge a large number of bulk CIs (or duplicated CIs in bulk), sorting the IDs of CIs may impact performance. In this situation, you can disable the sorting of IDs before you merge CIs.

To do so,

1. Go to **JMX Console > UCMDB:service=Settings Services > setSettingValue**.
2. In the **name** field, enter **reconciliation.sort.merge.bulk.ids**.
3. In the **value** field, enter **False**. (Default: True)
4. Click **Invoke**.

## Send documentation feedback

If you have comments about this document, you can [contact the documentation team](#) by email. If an email client is configured on this system, click the link above and an email window opens with the following information in the subject line:

**Feedback on Release Notes (Configuration Management System (CMS) 10.22 Cumulative Update Package 7 (CUP7))**

Just add your feedback to the email and click send.

If no email client is available, copy the information above to a new message in a web mail client, and send your feedback to [cms-doc@microfocus.com](mailto:cms-doc@microfocus.com).

We appreciate your feedback!