



Connect-It

Software Version: 9.80

For the Windows® and Linux® operating systems

Quick Start

Document Release Date: January 2018

Software Release Date: January 2018



Legal Notices

Warranty

The only warranties for products and services of Micro Focus and its affiliates and licensors ("Micro Focus") are set forth in the express warranty statements accompanying such products and services. Nothing herein should be construed as constituting an additional warranty. Micro Focus shall not be liable for technical or editorial errors or omissions contained herein. The information contained herein is subject to change without notice.

Restricted Rights Legend

Confidential computer software. Except as specifically indicated otherwise, a valid license from Micro Focus is required for possession, use or copying. Consistent with FAR 12.211 and 12.212, Commercial Computer Software, Computer Software Documentation, and Technical Data for Commercial Items are licensed to the U.S. Government under vendor's standard commercial license.

Copyright Notice

© 1994 - 2018 Micro Focus or one of its affiliates.

Trademark Notices

Adobe™ is a trademark of Adobe Systems Incorporated.

Microsoft® and Windows® are U.S. registered trademarks of Microsoft Corporation.

UNIX® is a registered trademark of The Open Group.

This product includes an interface of the 'zlib' general purpose compression library, which is Copyright © 1995-2002 Jean-loup Gailly and Mark Adler.

Disclaimer

Certain versions of software and/or documents ("Material") accessible here may contain branding from Hewlett-Packard Company (now HP Inc.) and Hewlett Packard Enterprise Company. As of September 1, 2017, the Material is now offered by Micro Focus, a separately owned and operated company. Any reference to the HP and Hewlett Packard Enterprise/HPE marks is historical in nature, and the HP and Hewlett Packard Enterprise/HPE marks are the property of their respective owners.

Documentation Updates

To check for recent updates or to verify that you are using the most recent edition of a document, go to: <https://softwaresupport.softwaregrp.com>.

This site requires that you register for a Software Passport and to sign in. To register for a Software Passport ID, click **Register for Software Passport** on the Micro Focus Support website at <https://softwaresupport.softwaregrp.com>.

You will also receive updated or new editions if you subscribe to the appropriate product support service. Contact your Micro Focus sales representative for details.

Support

Visit the Micro Focus Support site at: <https://softwaresupport.softwaregrp.com>.

This website provides contact information and details about the products, services, and support that Micro Focus offers.

Micro Focus online support provides customer self-solve capabilities. It provides a fast and efficient way to access interactive technical support tools needed to manage your business. As a valued support customer, you can benefit by using the support website to:

- Search for knowledge documents of interest
- Submit and track support cases and enhancement requests
- Download software patches
- Manage support contracts
- Look up support contacts
- Review information about available services
- Enter into discussions with other software customers
- Research and register for software training

Most of the support areas require that you register as a Software Passport user and to sign in. Many also require a support contract. To register for a Software Passport ID, click **Register for Software Passport** on the Micro Focus Support website at <https://softwaresupport.softwaregrp.com>.

To find more information about access levels, go to: <https://softwaresupport.softwaregrp.com/web/softwaresupport/access-levels>.

Integration Catalog accesses the Micro Focus Integration Catalog website. This site enables you to explore Micro Focus Product Solutions to meet your business needs, includes a full list of Integrations between Micro Focus Products, as well as a listing of ITIL Processes. The URL for this website is <https://softwaresupport.softwaregrp.com/km/KM01702731>.

Contents

Chapter 1: Introduction	5
What does Connect-It do?	5
Who is Connect-It intended for?	5
Who is this guide intended for?	5
How to use this guide	5
Conventions used in this guide	6
Chapter 2: Quick view of the user interface	7
The Scenario builder	7
The connectors	7
The monitors	8
Options	9
Chapter 3: Defining scenario elements	10
Source connector	10
Configure the connector	10
Destination connector	11
Configure the connector	11
Mapping	11
Configuring the mapping box	12
Chapter 4: Configure scenario elements	13
Define produced document types	13
Define consumed document types	14
Define the mapping of the document types	15
Edit mapping	16
Reconciliation keys	17
Define the supervision monitors	17
Chapter 5: Launch a scenario	18
Start a scenario	18
Start a scenario via the command line	18
Launch a scheduler	18
Launch a scenario as a Windows service	19

Chapter 6: Tracking a scenario	20
Using logs	20
Debug a scenario	20
Enabling the Test mode	21
Viewing and interpreting Connect-It logs	21
Saved sessions	21
Statistics	21
Produce in debug mode	22
Feedback loop	22
Send documentation feedback	23

Chapter 1: Introduction

This chapter includes:

What does Connect-It do?	5
Who is Connect-It intended for?	5
Who is this guide intended for?	5
How to use this guide	5

What does Connect-It do?

Connect-It is an integration platform that enables data to be exchanged between different applications.

Who is Connect-It intended for?

Connect-It is intended for IT technicians in charge of integrating different applications used by their company.

Who is this guide intended for?

This guide is aimed at anyone who needs to learn about the application's main features and how to implement them.

Note: This guide does not provide all possible configurations for each of the presented elements. For more information about a specific element, please see the reference manual for that element (references are provided in this guide).

How to use this guide

Use the Quick Start guide to view the different steps of a scenario implementation, from creation to execution.

Chapter **Quick view of the user interface**

This chapter presents the main elements of the application's graphical interface.

Chapter **Defining scenario elements**

This chapter presents the elements that make up a scenario and how they are implemented.

Chapter **Configure scenario elements**


This chapter presents the configuration of the main elements of a scenario.

Chapter **Launch the scenario**

This chapter presents the different approaches to launch production of a scenario's documents.

Conventions used in this guide

Below is the list of conventions used in this guide:

Convention	Description
JavaScript Code	Example of code or command.
...	Code or command omitted.
	Drag-and-drop action.
Object	Connect-It interface object: Menu, menu entry, tab or button.

The following conventions are also used:

- Steps to perform in a given order are presented in a numbered list. For example:
 - a. First step
 - b. Second step
 - c. Third and last step
- All figures and tables are numbered according to the chapter in which they are found, and the order in which they appear in the chapter. For example, the title of the fourth table in chapter two will be prefixed with **Table 2-4**.

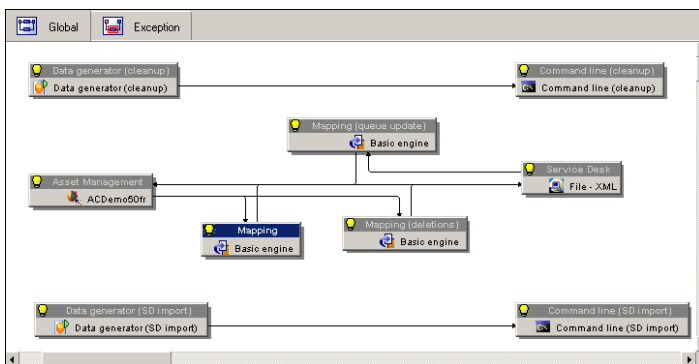
Chapter 2: Quick view of the user interface

This chapter includes:

The Scenario builder	7
The connectors	7
The monitors	8
Options	9

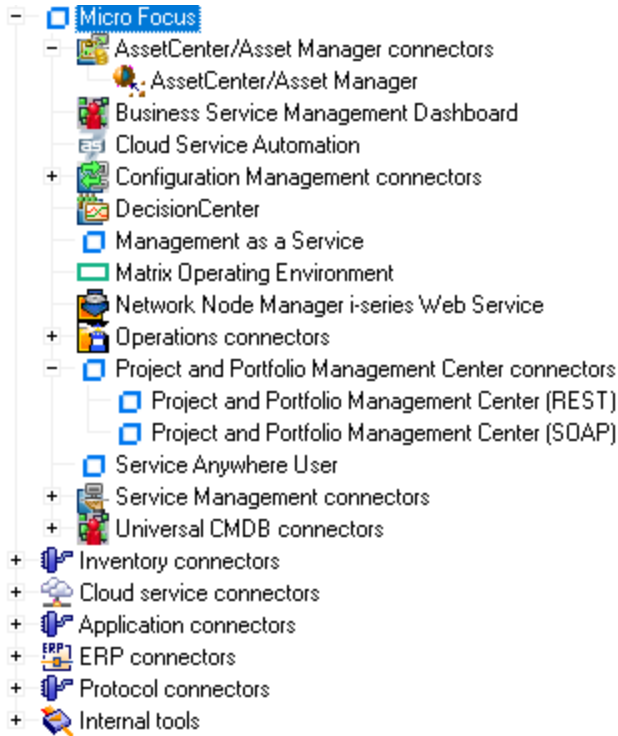
The Scenario builder

The Scenario builder is the work space where connectors are placed.



The connectors

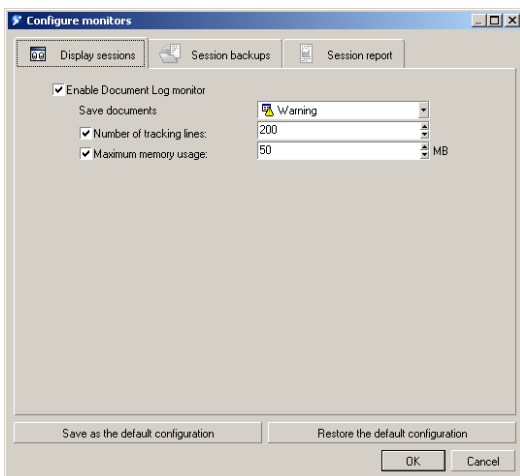
Connectors are components used to connect to an application database or to any other data format (.xml files, protocols, etc.).



► Connect-It - Connectors

The monitors

Monitors are used to perform monitoring functions associated with a scenario. They are used to track processed data and to provide information that can be used to improve data processing (statistics, error log, etc.).

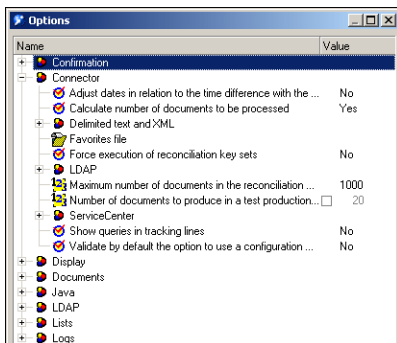


► Connect-It - User's Guide, Implementing an integration scenario, Define the supervision monitors

Options

Options available in the Edit/ Options... menu are for:

- Connect-It components
- The application



The values that you set directly influence how data is processed.

- ▶ Connect-It - User's Guide, Implementing an integration scenario, Editing scenario options.

Chapter 3: Defining scenario elements

Each scenario component must be configured.

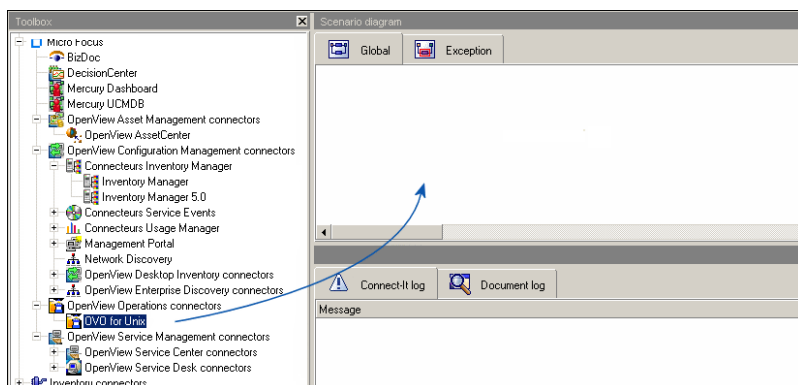
Generally, a scenario is composed of:

- A source connector
- A mapping box
- A destination connector

This chapter includes:

Source connector	10
Destination connector	11
Mapping	11

Source connector



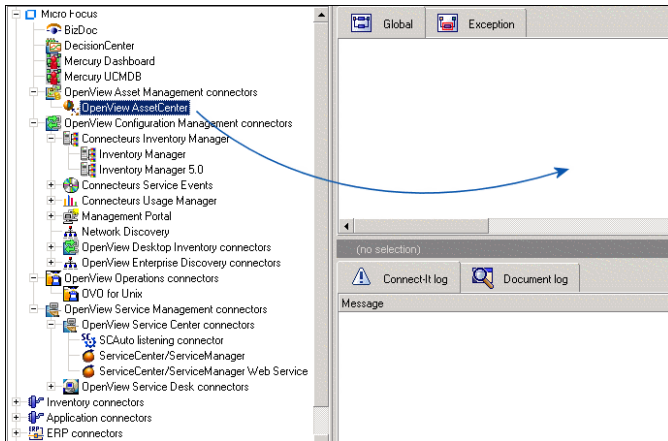
1. Drag and drop as shown in the screen shot.
The connector configuration wizard is launched automatically.

Configure the connector

Each connector must be configured to operate in your production environment.

- ▶ Connect-It - Connectors Guide, Configuring connectors.

Destination connector



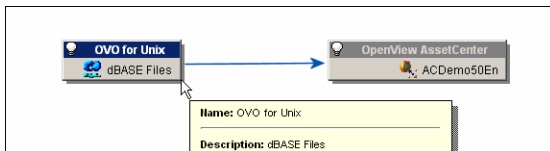
1. Drag and drop as shown in the screen shot.
The connector configuration wizard is launched automatically.

Configure the connector

Each connector must be configured to operate in your production environment.

- ▶ Connect-It - Connectors Guide, Configuring connectors.

Mapping



1. Select the source connector as illustrated.
2. Drag and drop onto the second connector
The mapping box is created automatically.

Configuring the mapping box

The mapping box is an independent, configurable connector.

- ▶ [Connect-It - User's Guide, Defining mappings of document types, The Mapping box.](#)

Chapter 4: Configure scenario elements

The behavior of each element used in the scenario must be defined.

You must define:

- Produced document types
- Consumed document types
- The mapping for each of the document types

This chapter includes:

Define produced document types	13
Define consumed document types	14
Define the mapping of the document types	15
Edit mapping	16
Define the supervision monitors	17

Define produced document types

A produced document type is a document that generally interprets a database schema.

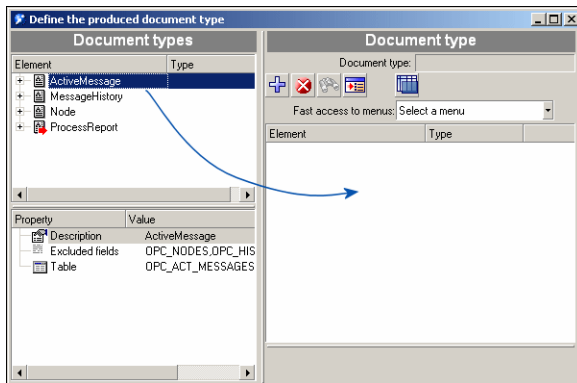
A document type contains a certain number of fields ordered hierarchically: Root, fields, structure (fields), collection (structure and fields)

Creating a document type produced or consumed by a connector consists of:

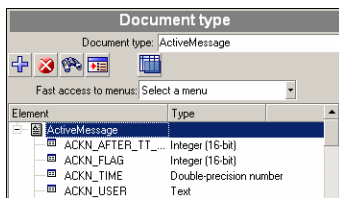
- Selecting a document type from among the document types published by the connector.
- Selecting fields among those of the chosen document type.

To create a produced document type:

1. Drag and drop the document fields as illustrated.
Only select the fields that you need.



2. Elements that are selected for the document type to produce appear in the column on the right.



3. Validate the creation of the document type. It then appears on the **Document types** tab of the selected connector.

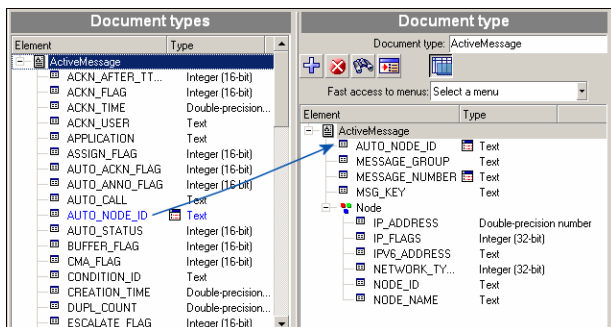
► Connect-It - User's Guide, Implementing an integration scenario, Defining produced or consumed document types.

Define consumed document types

A consumed document type is a document that is consumed by the destination connector. The document contains a certain number of fields ordered hierarchically: Root, fields, structure (fields), collection (structure and fields).

To create a consumed document type:

1. Drag and drop the document fields as illustrated.



Only select the fields that you need.

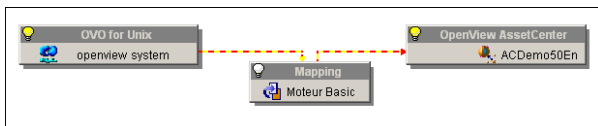
2. Elements that are selected for the document type to produce appear in the column on the right.
3. Validate the creation of the document type. It then appears on the **Document types** tab of the selected connector.

► Connect-It - User's Guide, Implementing an integration scenario, Defining produced or consumed document types.

Define the mapping of the document types

The mapping describes:

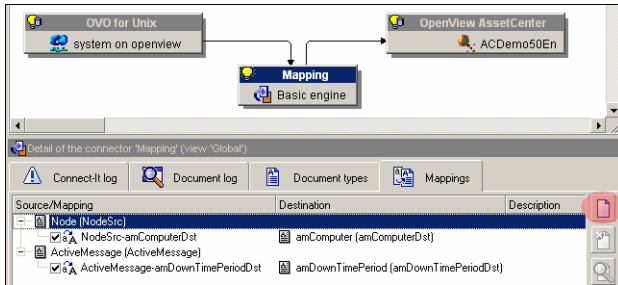
1. The relationship between a source connector and a destination connector
2. The relationship of a document type produced by the source connector and a document type consumed by the destination connector.



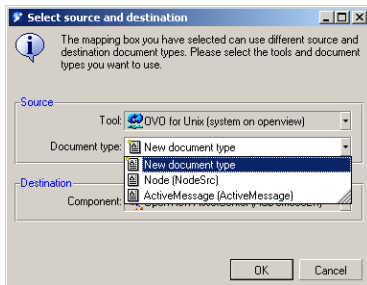
To create a mapping:

1. Select the mapping box
2. Click the **Mappings** tab

3. Click **New mapping**



4. Select the document type that will be mapped to the source document.



5. Validate

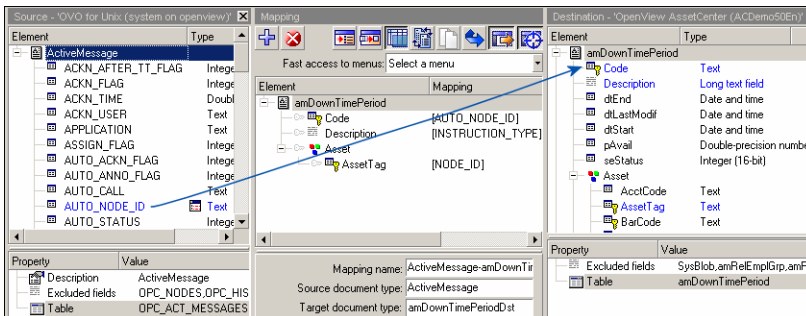
A mapping edit window appears.

► Connect-It - User's Guide, Defining mappings of document types, Editing mappings.

Edit mapping

The mapping itself is a comprehensive association of elements from a source document with elements of a destination document.

These elements are displayed in the mapping edit window.



The link can be made by dragging the source element and dropping it on the destination element.

Once created, the mapping defines the relationship between an element in the source table and an element in the destination table via a script which can be seen in the **Mapping script** field.

The mapping is saved after you have validated it (**OK** button).

Reconciliation keys

In order to uniquely identify a record, and insert or update data in a coherent manner, a reconciliation key is set for each identifying element. The color of the key is red.

Element	Mapping
anDownTimePeriod	
Code	[AUTO_NODE_ID]
Description	[INSTRUCTION_TYPE]
Asset	
AssetTag	[NODE_ID]

Note: Reconciliation keys are not available for all connectors and depend on the connector type that is used.

► Connect-It - User's Guide, Defining mappings of document types, Reconciliation keys.

Define the supervision monitors

Monitors activate and manage the forwarding of information from connectors.

The monitors are enabled when a scenario is created and is relative to a given scenario.

Monitors are used to:

- Display processing results for a session
- Record session activity
- Retrieve processing information for a session
- Define what must be backed up when a scenario is processed
- Define where the processing result for a scenario needs to be saved and for what duration
- Define where the processing result of a scenario needs to be sent

► Connect-It - User's Guide, Implementing an integration scenario, Define the supervision monitors

Chapter 5: Launch a scenario


Once the different scenario components have been defined and configured, you can execute your scenario. When the scenario is executed, data is exchanged between the source and destination applications.

This chapter includes:

Start a scenario	18
Launch a scheduler	18
Launch a scenario as a Windows service	19

Start a scenario

To start a scenario, during which documents are produced and consumed in graphical mode, the following actions must be performed:

1. Select the source connector
2. Click 

Start a scenario via the command line


In most instances the command line is used to start a scenario instead of the graphical interface. This method is less costly performance-wise and is much quicker. The command line is mainly used in production environments where the graphical interface remains the tool of choice to create, update and debug scenarios.

Launch a scheduler

A scheduler can be associated with a scenario or, more precisely, with produced document types that compose it.

- ▶ Connect-It - User's Guide, Implementing an integration scenario, Creating a schedule.

To start a scenario associated with a schedule in graphical mode, the following actions must be performed:

1. Select the source connector
2. Click 

Launch a scenario as a Windows service

A Windows service can be associated with a scenario.

This service enables your Connect-It server to start the data-processing procedure as a background task, depending on the scheduler associated with your scenario.

All services are managed by the Service Console.

To launch a Connect-It service:

1. Select the **Service Console** in the Micro Focus\ Connect-It program group.
- ▶ Connect-It - User's Guide, Implementing an integration scenario, Define a Connect-It service (Windows environment).

Chapter 6: Tracking a scenario

All data processed by the connectors, including processing information, can be saved to one of Connect-It's log files (application log, document log), or can be stored in the application database.

This chapter includes:

Using logs	20
Debug a scenario	20

Using logs

Using the Document log enables you to see if any problems occurred while processing the documents produced by a source connector.

The Scenario builder enables you to consult two logs:

- The Connect-It log
- The Document log

To activate the logs:

1. Select the **Monitors/ Configure monitors** menu item
2. On the **Display sessions** tab, select any desired options.
Options let you configure how elements are displayed in the application log.
3. On the **Session backups** tab, select any desired options.
Options available on this tab are used to filter information that will be saved and to specify the format of the backup (files, database).
We recommend that you only save elements that generated processing errors. Otherwise, the performance of the application may be impacted.

► Connect-It - User's Guide, Implementing an integration scenario, Define the supervision monitors.

Debug a scenario

Several approaches are possible to improve a scenario before using it in production mode:

Enabling the Test mode

This lets you choose not to insert data or to perform a rollback if a processing error occurs and if your destination supports transactions. The behavior of the Test mode depends on the connector that is being used. For example, for an XML type connector, the Test mode will stop before data is written.

To test a scenario, click [?](#).

▶ [Connect-It - User's Guide, Managing an integration scenario, Testing and debugging an integration scenario.](#)

Viewing and interpreting Connect-It logs

Logs provide you comprehensive information concerning how documents were processed per each scenario component.

▶ [Connect-It - User's Guide, Managing an integration scenario, Testing and debugging an integration scenario.](#)

Saved sessions

A session is a set of information related to a scenario that was processed. It includes:

- Application logs
- Documents filtered by their state and stored in a predefined location (files or database).
- Processing statistics

▶ [Connect-It - User's Guide, Implementing an integration scenario, Define the supervision monitors.](#)

Statistics

The following statistics are produced:

- Document statistics: Documents produced and documents consumed.
- Time statistics: Length of the session, length of processing by the connector

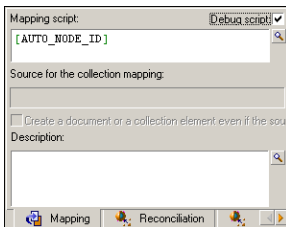
These statistics highlight the key elements in a scenario (insertion, deletion, or updating of documents).

- ▶ Connect-It - User's Guide, Implementing an integration scenario, Define the supervision monitors, Session options.

Produce in debug mode

Similar to a debugger used by software developers, you have the option of analyzing each mapping script with the application's debugger during production testing.

The debugger can be used for each mapping script.



Feedback loop

Each connector can produce a processing report for the documents it consumed.

You can create a feedback loop via a wizard. This lets you track document processing and implement a proactive error management policy.

- ▶ Connect-It - User's Guide, Managing an integration scenario, Testing and debugging an integration scenario, Processing reports.

Send documentation feedback

If you have comments about this document, you can [contact the documentation team](#) by email. If an email client is configured on this system, click the link above and an email window opens with the following information in the subject line:

Feedback on Quick Start (Connect-It 9.80)

Just add your feedback to the email and click send.

If no email client is available, copy the information above to a new message in a web mail client, and send your feedback to connectit_support@groups.hpe.com.

We appreciate your feedback!