



# Systinet

Software Version: 10.03

Windows and Linux Operating System

## Systinet Workbench

Document Release Date: April 2017

Software Release Date: April 2017



**Hewlett Packard**  
Enterprise

## Legal Notices

### Warranty

The only warranties for Hewlett Packard Enterprise products and services are set forth in the express warranty statements accompanying such products and services. Nothing herein should be construed as constituting an additional warranty. Hewlett Packard Enterprise shall not be liable for technical or editorial errors or omissions contained herein.

The information contained herein is subject to change without notice.

### Restricted Rights Legend

Confidential computer software. Valid license from Hewlett Packard Enterprise required for possession, use or copying. Consistent with FAR 12.211 and 12.212, Commercial Computer Software, Computer Software Documentation, and Technical Data for Commercial Items are licensed to the U.S. Government under vendor's standard commercial license.

### Copyright Notice

© 2003 - 2017 Hewlett Packard Enterprise Development LP

### Trademark Notices

Adobe™ is a trademark of Adobe Systems Incorporated.

Microsoft® and Windows® are U.S. registered trademarks of Microsoft Corporation.

UNIX® is a registered trademark of The Open Group.

This product includes an interface of the 'zlib' general purpose compression library, which is Copyright © 1995-2002 Jean-loup Gailly and Mark Adler.

## Documentation Updates

To check for recent updates or to verify that you are using the most recent edition of a document, go to: <https://softwaresupport.hpe.com/>.

This site requires that you register for an HP Passport and to sign in. To register for an HP Passport ID, click **Register** on the HPE Software Support site or click **Create an Account** on the HP Passport login page.

You will also receive updated or new editions if you subscribe to the appropriate product support service. Contact your HPE sales representative for details.

## Support

Visit the HPE Software Support site at: <https://softwaresupport.hpe.com/>.

Most of the support areas require that you register as an HP Passport user and to sign in. Many also require a support contract. To register for an HP Passport ID, click **Register** on the HPE Support site or click **Create an Account** on the HP Passport login page.

To find more information about access levels, go to: <https://softwaresupport.hpe.com/web/softwaresupport/access-levels>.

**HPE Software Solutions Now** accesses the HPSW Solution and Integration Portal website. This site enables you to explore HPE Product Solutions to meet your business needs, includes a full list of Integrations between HPE Products, as well as a listing of ITIL Processes. The URL for this website is <https://softwaresupport.hpe.com/km/KM01702731>.

## About this PDF Version of Online Help

This document is a PDF version of the online help. This PDF file is provided so you can easily print multiple topics from the help information or read the online help in PDF format. Because this content was originally created to be viewed as online help in a web browser, some topics may not be formatted properly. Some interactive topics may not be present in this PDF version. Those topics can be successfully printed from within the online help.

# Contents

- Chapter 1: HPE Systinet Workbench ..... 4
  - Installing HPE Systinet Workbench ..... 5
  - Configuring HPE Systinet Workbench ..... 7
    - Switching to Admin Mode ..... 7
    - Setting JVM Memory ..... 8
    - Setting Timeout ..... 8
    - Resetting Security Storage ..... 8
    - Proxy Configuration ..... 9
    - Configuring SSL ..... 10

# Chapter 1: HPE Systinet Workbench

HPE Systinet Workbench consists of the following tools, enabling you to customize your deployment of HPE Systinet.

- Assertion Editor

Customizes the conditions applied by your business policies within HPE Systinet. For more information, see *HPE Systinet Assertion Editor User Guide*.

- Customization Editor

Customizes the underlying System Data Model (SDM) within HPE Systinet. For more information, see *HPE Systinet Customization Editor User Guide*.

- Taxonomy Editor

Customizes the taxonomies used to categorize artifacts in HPE Systinet. For more information, see *HPE Systinet Taxonomy Editor User Guide*.

- Report Editor

Customizes report definitions for use with HPE Systinet. For more information, see *HPE Systinet Report Editor User Guide*.

# Installing HPE Systinet Workbench

HPE Systinet Workbench is an Eclipse development platform distributed as a zip file, **hpe-systinet-workbench-10.03-win64.zip**.

**Note:** HPE Systinet Workbench requires Java SE Development Kit (JDK) 1.8.0 (64 bit version only) or higher. You must include the path to this version of the JDK in the **JAVA\_HOME** environment variable.

To set the **JAVA\_HOME** environment variable:

1. In Windows, click **Control Panel > System and Security > System > Advanced system settings > Environment Variables**.  
The Environment Variables dialog box is displayed.
2. In the User Variables section, click **New**.
3. Input Variable Name as **JAVA\_HOME** and set Variable Value to the installation folder of Java SE Development Kit (JDK) 1.8.0 or higher.
4. Click **OK** to exit each dialog box.

To install HPE Systinet Workbench:

1. Extract the archive to your required location.

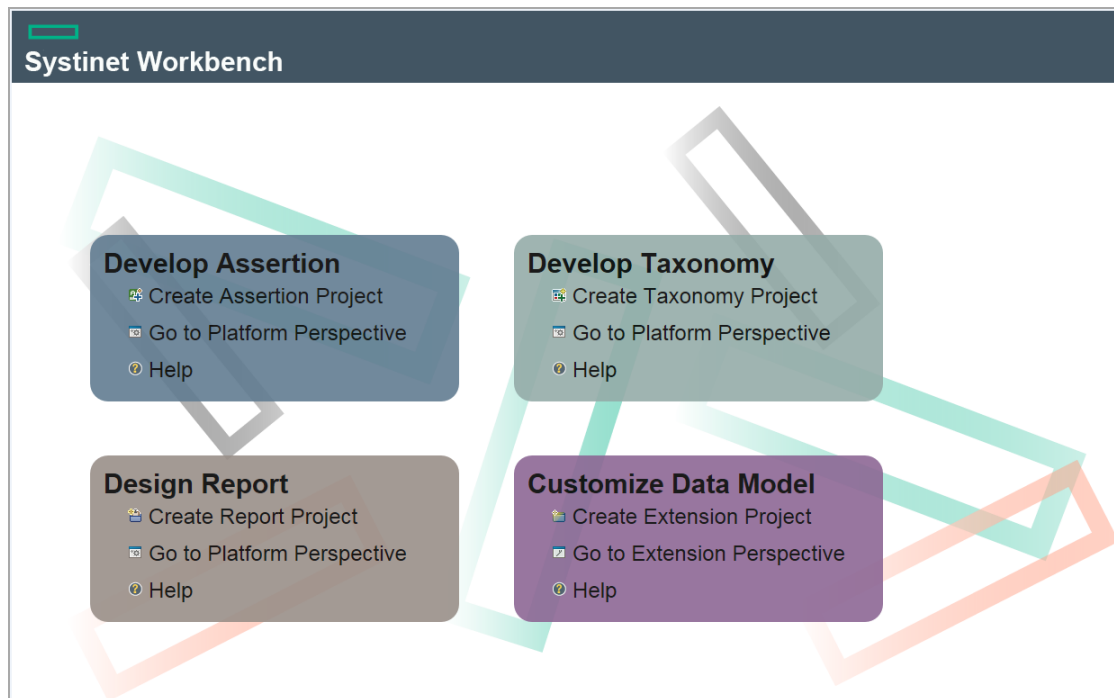
**Note:** In this document, the location where you have extracted the archive is referred as **WB\_HOME**.

**Note:** Ensure that the path where you have extracted must not be longer than 97 characters.

To Start Systinet Workbench:

1. Execute **.exe** from **WB\_HOME/systinet-workbench/start.exe**.

The HPE Systinet Workbench welcome screen is displayed.



2. Click one of the options to open the respective editor tools, start a new project, or view the documentation set.

You can click **Help > Welcome** from the menu options of any of the editor tools to return to the welcome screen.

# Configuring HPE Systinet Workbench

This topic contains configurations that generally apply to the whole HPE Systinet Workbench suite. The default configuration should work out of the box. However, in some cases, you need to tune HPE Systinet Workbench to suit your working environment. This section covers the following topics:

- [Switching to Admin Mode](#)
- [Setting JVM Memory](#)
- [Setting Timeout](#)
- [Resetting Security Storage](#)
- [Proxy Configuration](#)
- [Configuring SSL](#)

HPE Systinet Workbench editors may require additional configurations. For more specific configurations on specific editor, see *Getting Started* section in the respective editor's guide.

## Switching to Admin Mode

By default, HPE Systinet Workbench runs in **normal** mode which prevents users from uploading system taxonomies (IDs start with `uddi:systinet.com:soa:model:taxonomies`) and the Report Editor `.rptlibrary` file to HPE Systinet servers. If you need to work with system taxonomies or want to upload the `.rptlibrary` file you must switch from **normal** mode to **admin** mode.

**Caution:** The HPE Systinet uses hard-coded values from system taxonomies. Changing or removing them may cause errors.

To Switch HPE Systinet Workbench to Admin Mode:

1. Open `WB_HOME/systinet-workbench/configuration/config.ini` with a text editor.
2. Add `mode=admin` to `config.ini`.
3. Restart the HPE Systinet Workbench.

## Setting JVM Memory

HPE Systinet Workbench is memory-intensive. If you experience performance issues, HPE recommends to increase the memory allocation.

To increase the memory allocation:

1. Open `WB_HOME/systinet-workbench/start.ini` for editing.
2. Set the new values as follows:
  - `-Xms1024m`
  - `-Xmx2048m`
3. Save the changes and restart the HPE Systinet Workbench.

## Setting Timeout

HPE Systinet Workbench downloading from HPE Systinet may time out. If you experience issues, HPE recommends increasing the time out.

To increase the Timeout:

1. Open `WB_HOME/systinet-workbench/start.ini` (or `eclipse.ini` for stand-alone installation) for editing.
2. Set the new value as follows:  
`-Dorg.systinet.platform.rest.Client.timeout=200000`  
The value is in milliseconds with a default value of 120000 (2 minutes).
3. Save the changes and restart the HPE Systinet Workbench.

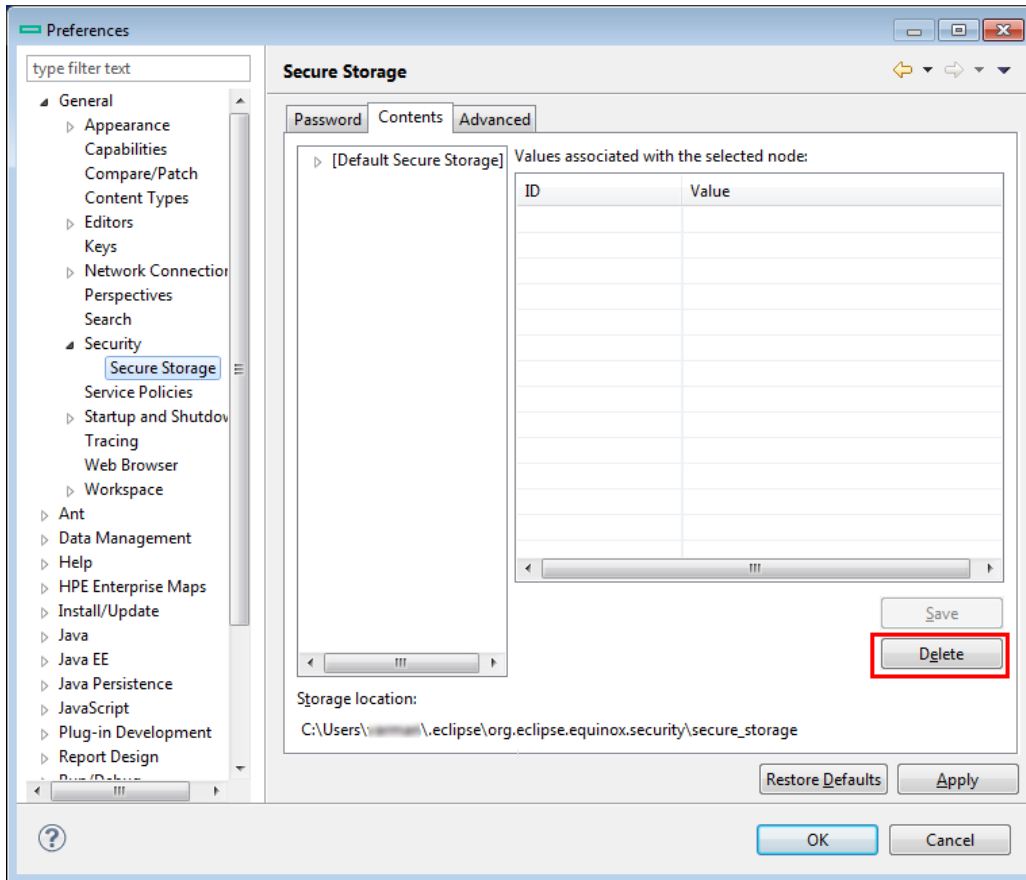
## Resetting Security Storage

HPE Systinet Workbench may fail to store saved credentials of servers. In such cases, HPE recommends to clear the secure storage.

To reset the secure storage:



1. In Systinet Workbench, go to **Windows > Preferences > General > Security > Security Storage > Contents** tab.
2. Click root node in **Default Secure Storage** and click **Delete**.



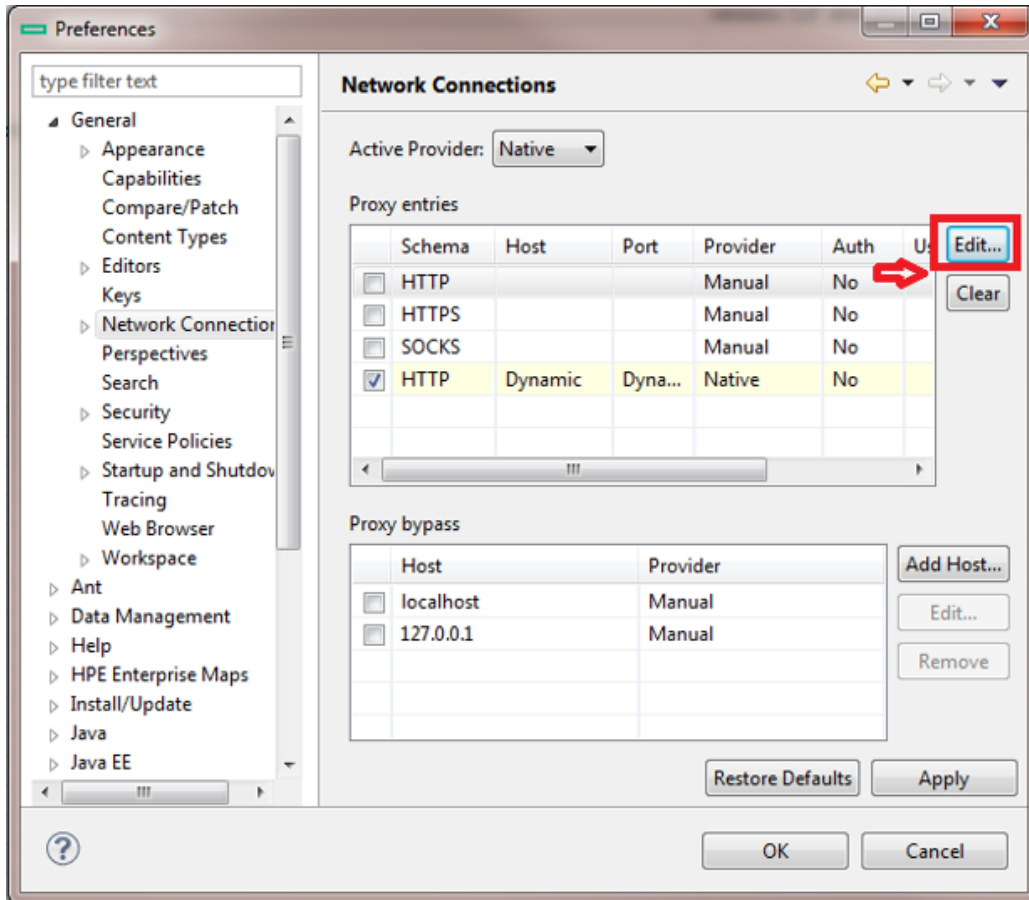
3. Restart the HPE Systinet Workbench.

## Proxy Configuration

You can connect to HPE Systinet from HPE Systinet Workbench via proxy. You must configure the proxy settings in HPE Systinet Workbench manually.

To configure the proxy settings in HPE Systinet Workbench:

1. Go to **Windows > Preferences > General > Network Connections**.
2. In **Proxy entries** table, click **Edit** to enter the proxy setting information.



3. Click **Apply** or **OK** to apply the changes.

## Configuring SSL

By default, HPE Systinet Workbench trusts all HPE Systinet server certificates. You may want HPE Systinet Workbench to verify HPE Systinet server certificates.

To verify the HPE Systinet server certificates:

1. Add the following options to `WB_HOME/systinet-workbench/start.ini`:
  - `-Dcom.hp.systinet.security.ssl.verifyCert=true`
  - `-Djavax.net.ssl.trustStore=USER_TRUSTSTORE`
  - `-Djavax.net.ssl.trustStorePassword=TRUSTSTORE_PASS`
  - `-Djavax.net.ssl.trustStoreType=TRUSTSTORE_FORMAT`

If HPE Systinet is configured for 2-way SSL, you must provide HPE Systinet Workbench certificates to HPE Systinet.

To provide HPE Systinet Workbench client certificates to HPE Systinet:

1. Add the following options to `WB_HOME/systinet-workbench/start.ini`:
  - `-Djavax.net.ssl.keyStore=USER_KEYSTORE`
  - `-Djavax.net.ssl.keyStorePassword=KEYSTORE_PASS`
  - `-Djavax.net.ssl.keyStoreType=KEYSTORE_FORMAT`