



# Systinet

Software Version: 10.03

Windows and Linux Operating System

## Virtual Appliance Quick Start Guide

Document Release Date: April 2017

Software Release Date: April 2017



**Hewlett Packard**  
Enterprise

## Legal Notices

### Warranty

The only warranties for Hewlett Packard Enterprise products and services are set forth in the express warranty statements accompanying such products and services. Nothing herein should be construed as constituting an additional warranty. Hewlett Packard Enterprise shall not be liable for technical or editorial errors or omissions contained herein.

The information contained herein is subject to change without notice.

### Restricted Rights Legend

Confidential computer software. Valid license from Hewlett Packard Enterprise required for possession, use or copying. Consistent with FAR 12.211 and 12.212, Commercial Computer Software, Computer Software Documentation, and Technical Data for Commercial Items are licensed to the U.S. Government under vendor's standard commercial license.

### Copyright Notice

© 2003-2017 Hewlett Packard Enterprise Development LP

### Trademark Notices

Adobe™ is a trademark of Adobe Systems Incorporated.

Microsoft® and Windows® are U.S. registered trademarks of Microsoft Corporation.

UNIX® is a registered trademark of The Open Group.

This product includes an interface of the 'zlib' general purpose compression library, which is Copyright © 1995-2002 Jean-loup Gailly and Mark Adler.

## Documentation Updates

To check for recent updates or to verify that you are using the most recent edition of a document, go to: <https://softwaresupport.hpe.com/>.

This site requires that you register for an HP Passport and to sign in. To register for an HP Passport ID, click **Register** on the HPE Software Support site or click **Create an Account** on the HP Passport login page.

You will also receive updated or new editions if you subscribe to the appropriate product support service. Contact your HPE sales representative for details.

## Support

Visit the HPE Software Support site at: <https://softwaresupport.hpe.com/>.

Most of the support areas require that you register as an HP Passport user and to sign in. Many also require a support contract. To register for an HP Passport ID, click **Register** on the HPE Support site or click **Create an Account** on the HP Passport login page.

To find more information about access levels, go to: <https://softwaresupport.hpe.com/web/softwaresupport/access-levels>.

**HPE Software Solutions Now** accesses the HPSW Solution and Integration Portal website. This site enables you to explore HPE Product Solutions to meet your business needs, includes a full list of Integrations between HPE Products, as well as a listing of ITIL Processes. The URL for this website is <https://softwaresupport.hpe.com/km/KM01702731>.

## About this PDF Version of Online Help

This document is a PDF version of the online help. This PDF file is provided so you can easily print multiple topics from the help information or read the online help in PDF format. Because this content was originally created to be viewed as online help in a web browser, some topics may not be formatted properly. Some interactive topics may not be present in this PDF version. Those topics can be successfully printed from within the online help.

# Contents

Chapter 1: About This Guide .....	4
Chapter 2: HPE Systinet Virtual Appliance Overview .....	5
Chapter 3: Hardware and Software Prerequisites .....	6
Chapter 4: Steps to Set Up and Use the Virtual Appliance .....	7
1. Download the Virtual Appliance File .....	7
2. Deploy the Virtual Appliance Using the Oracle VirtualBox .....	7
3. Open the HPE Systinet Welcome Page .....	10
4. Log In to HPE Systinet .....	11
5. Power-Off the Virtual Appliance .....	12
Chapter 5: Re-import and Clear Demo Data in HPE Systinet .....	13
Re-import Demo Data to HPE Systinet .....	13
Clear the Data in HPE Systinet .....	14
Chapter 6: Enable Hardware Virtualization .....	15

# Chapter 1: About This Guide

Welcome to the HPE Systinet - Virtual Appliance *Quick Start Guide*. This guide explains how to use the Virtual Appliance to use the trial version of HPE Systinet (HPE Systinet).

This guide contains the following chapters:

- ["HPE Systinet Virtual Appliance Overview" on page 5](#)
- ["Hardware and Software Prerequisites" on page 6](#)
- ["Steps to Set Up and Use the Virtual Appliance" on page 7](#)
- ["Re-import and Clear Demo Data in HPE Systinet " on page 13](#)
- ["Enable Hardware Virtualization" on page 15](#)

# Chapter 2: HPE Systinet Virtual Appliance Overview

## **Trial Version**

The HPE Systinet Virtual Appliance is a trial version of the product you may use for evaluation purposes. The trial version contains a 60 days instant-on license.

## **Log in to the Virtual Appliance**

The Virtual Appliance can be accessed through HTTP/S, a console, or SSH.

To SSH to the machine, use the following credentials (recommended):

- User name: **hpe**
- Password: **changeit**

For administrative tasks use the following credentials (not recommended):

- User name: **root**
- Password: **hpedemo**

## **Warranty**

The HPE Systinet Virtual Appliance is provided as-is with no warranty.

Prior to using the Virtual Appliance you must agree with the terms and conditions provided in the homepage.

# Chapter 3: Hardware and Software Prerequisites

The following hardware and software is required to run the Virtual Appliance:

- 64-bit Operating System (Windows/Mac/Linux)
- VirtualBox 5
- VMware Workstation Player 12
- Intel CPU with minimum 2 cores and hardware virtualization support (VT-x/AMD-V) enabled
- At least 8GB RAM
- At least 20GB free hard disk space

# Chapter 4: Steps to Set Up and Use the Virtual Appliance

To set up and use the Virtual Appliance to use the Trial version of HPE Systinet, follow these 5 procedures:

- "1. Download the Virtual Appliance File" below
- "2. Deploy the Virtual Appliance Using the Oracle VirtualBox" below
- "3. Open the HPE Systinet Welcome Page" on page 10
- "4. Log In to HPE Systinet" on page 11
- "5. Power-Off the Virtual Appliance" on page 12

## 1. Download the Virtual Appliance File

**Step 1.** Open <http://www8.hp.com/us/en/software-solutions/api-management-soa-governance/index.html>, fill in the Evaluation form, click Continue and Agree to the Software Download Terms of Use.

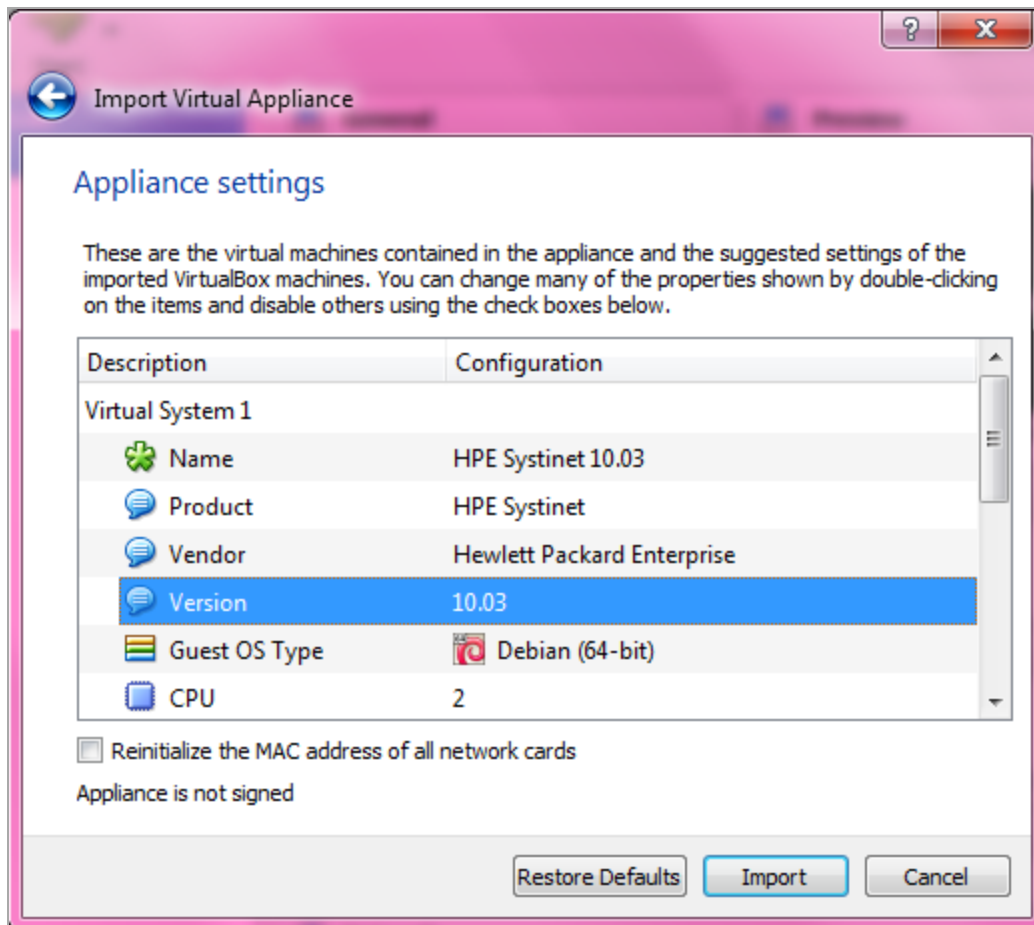
**Step 2.** Select Using Standard Download and download the Virtual Appliance file.

The size of the Virtual Appliance file is over 2.6GB. Allocate several hours to download it.

## 2. Deploy the Virtual Appliance Using the Oracle VirtualBox

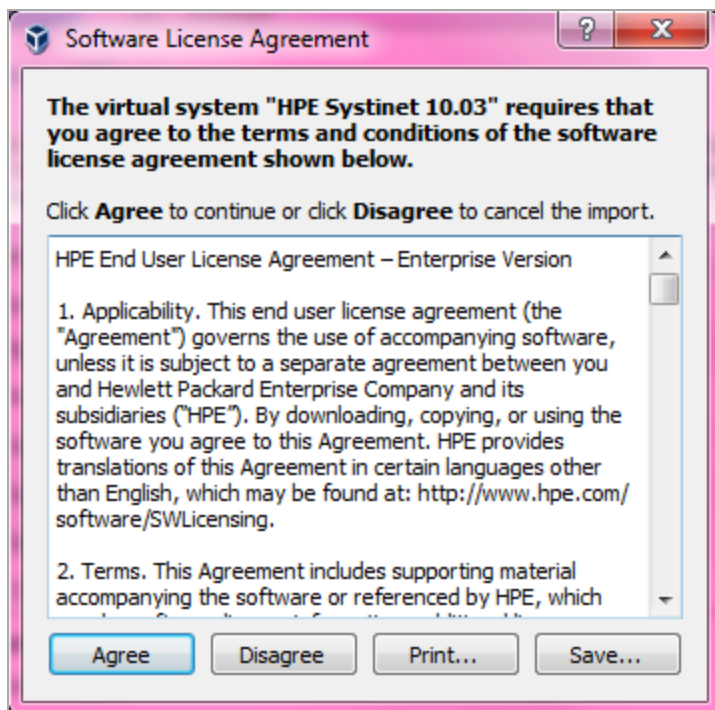
Open <http://www.virtualbox.org> to download and install Oracle VirtualBox (refer to "[Hardware and Software Prerequisites](#)" on page 6 for supported versions).

**Step 3.** Start the VirtualBox, and go to **File > Import Appliance**. The **Import Virtual Appliance** window is displayed. In **Appliance to import**, select the downloaded hpe-systinet-10.03.ova file and click **Next**. The **Appliance settings** is displayed.

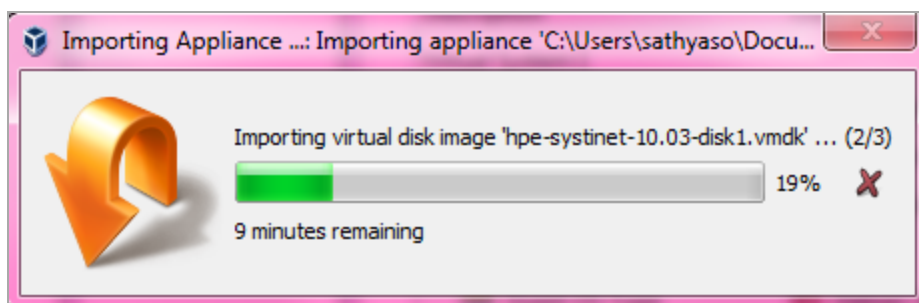


**Step 4.** In **Appliance settings**, select the **Version 10.03**. Click **Import**. The **Software License Agreement** page is displayed.

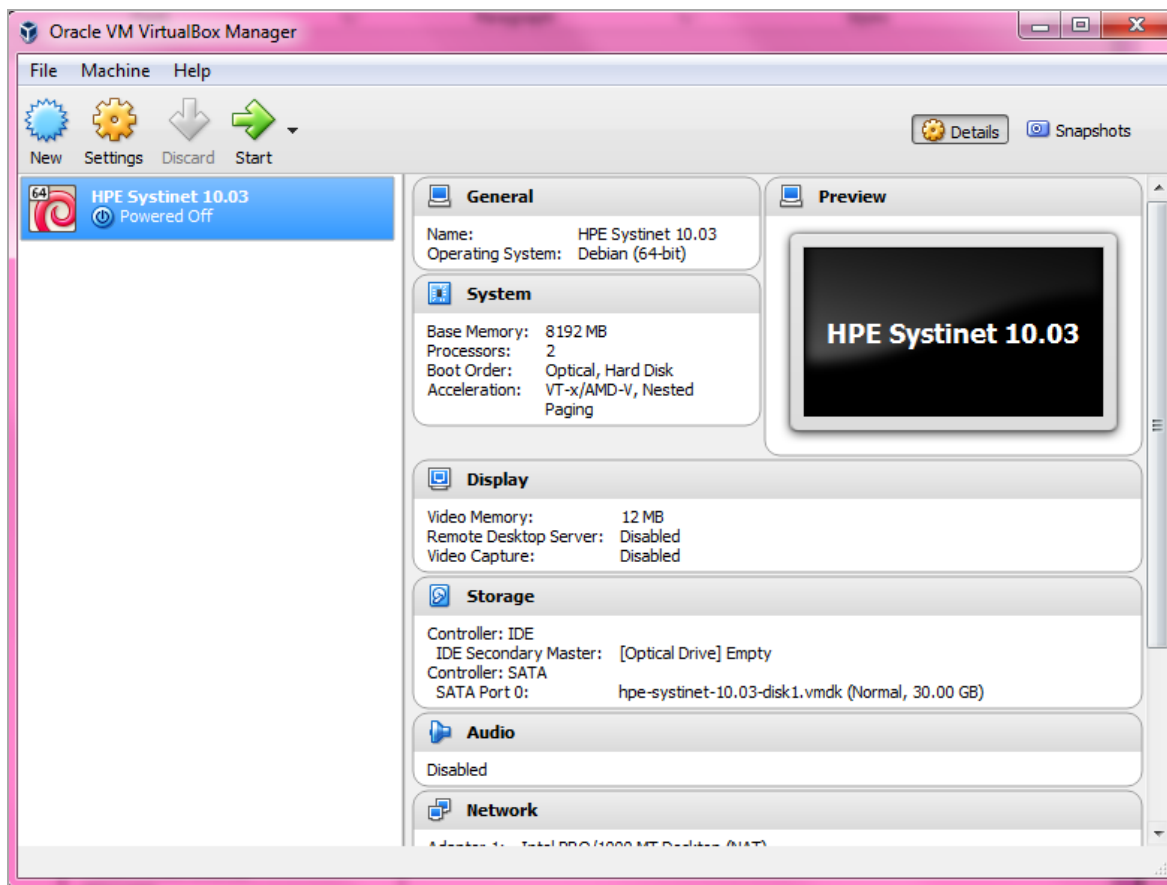




**Step 5.** Click **Agree**. The **Import Appliance** progress bar is displayed.



Once the file is imported, the following screen is displayed:



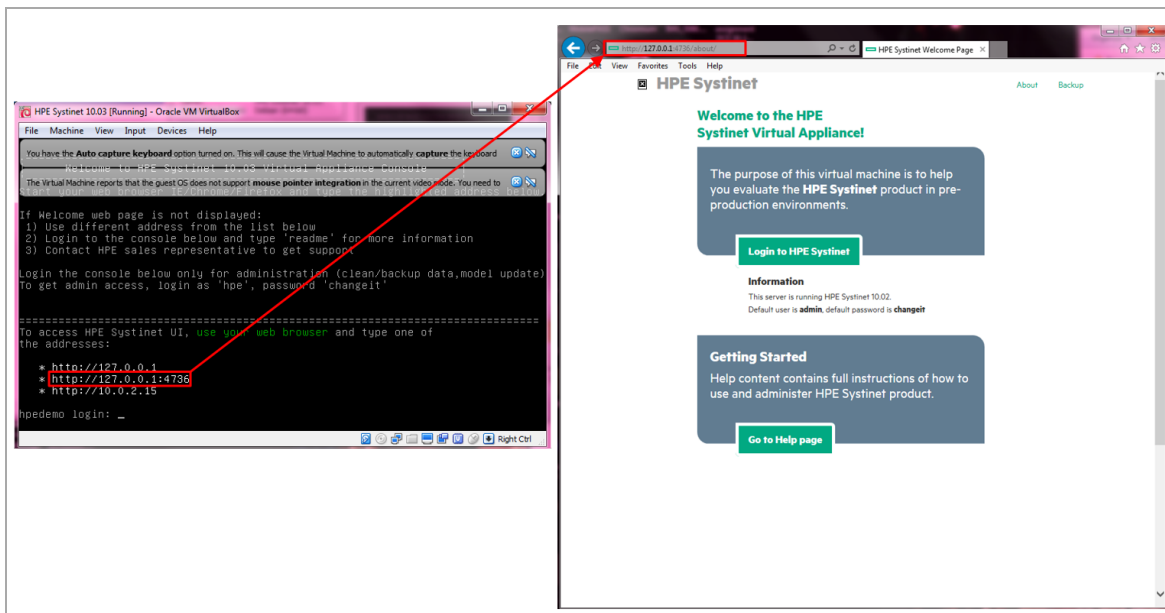
**Step 6.** Select the HPE Systinet and click **Start**.

HPE Systinet also supports VMware virtualization software.

### 3. Open the HPE Systinet Welcome Page

**Step 7.** Wait for login prompt to appear and locate the HPE Systinet addresses in your console.

**Step 8.** Use one of the addresses in your web browser and click **Login to HPE Systinet** to open the HPE Systinet login page.

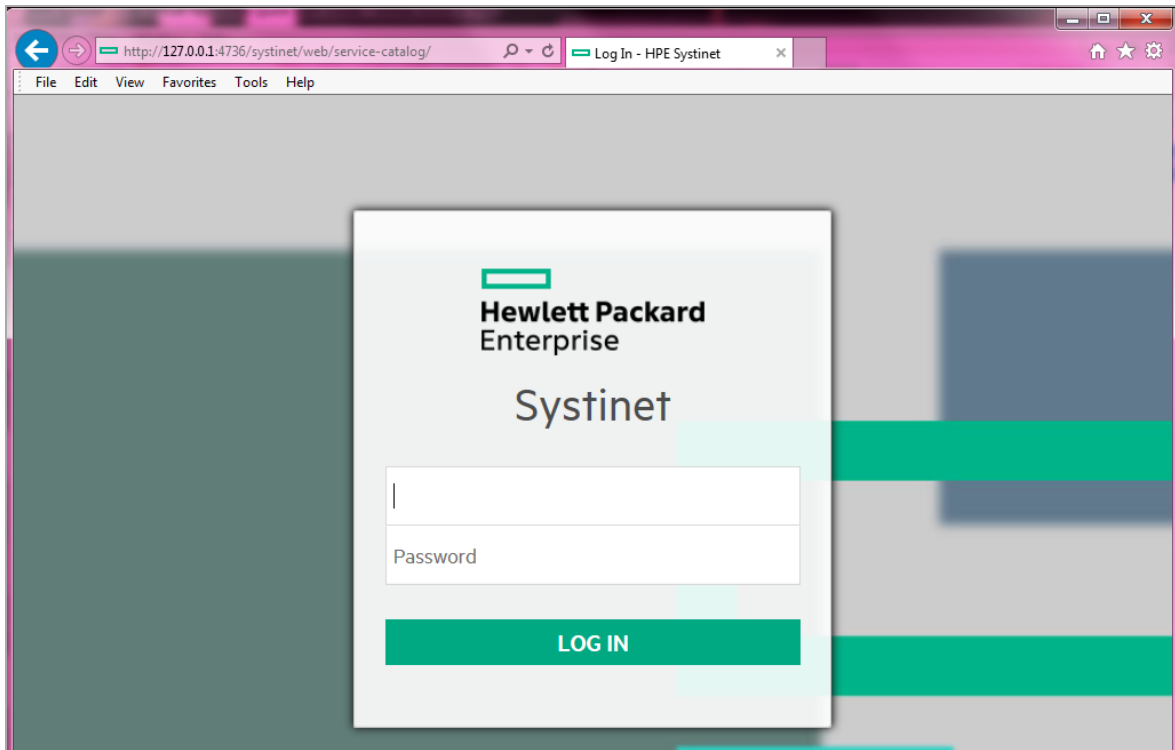


The trial version contains a 60 days instant-on license. To renew the license, use the HPE Licensing Portal <http://enterpriselicense.hpe.com/redirector/home>.

If the Welcome page is not displayed, try to open other listed address from the console. If all addresses are inaccessible, refer to Troubleshooting section in README.TXT or contact your sales representative for support.

## 4. Log In to HPE Systinet

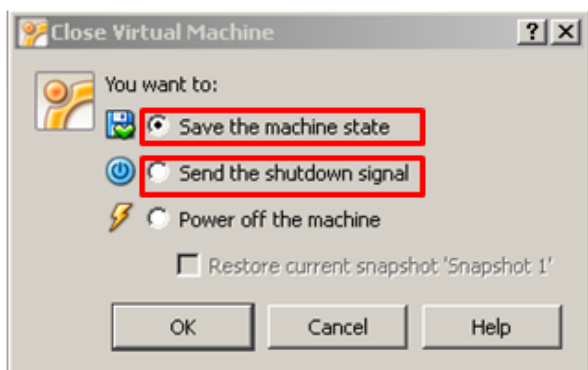
**Step 9:** Login using **admin** as the User Name and **changeit** as the Password.



## 5. Power-Off the Virtual Appliance

To Close the Virtual Appliance, select one of the following options:

- **Save the machine state** - Similar to hibernate on a real computer. The Virtual Appliance will start quickly but requires additional disk space.
- **Send the shutdown signal** - Full Virtual Appliance shutdown. Same effect as if you had pressed the power button on a real computer



Both options will save all the data stored in the HPE Systinet software.

# Chapter 5: Re-import and Clear Demo Data in HPE Systinet

This chapter describes how to re-import the demo data in HPE Systinet and how to clear the data as follows:

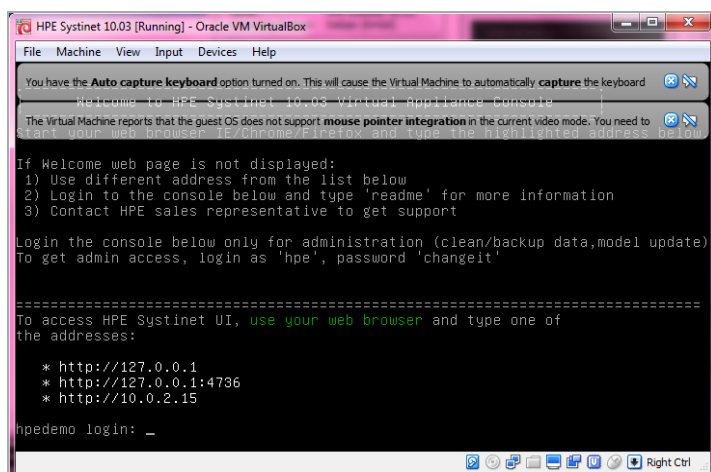
- "Re-import Demo Data to HPE Systinet" below
- "Clear the Data in HPE Systinet" on the next page

## Re-import Demo Data to HPE Systinet

**Login to the console:**

login: **hpe**

password: **changeit**



```
HPE Systinet 10.03 [Running] - Oracle VM VirtualBox
File Machine View Input Devices Help

You have the Auto capture keyboard option turned on. This will cause the Virtual Machine to automatically capture the keyboard

The Virtual Machine reports that the guest OS does not support mouse pointer integration in the current video mode. You need to
start your web browser (IE/Chrome/Firefox) and type the highlighted address below

If Welcome web page is not displayed:
1) Use different address from the list below
2) Login to the console below and type 'readme' for more information
3) Contact HPE sales representative to get support

Login the console below only for administration (clean/backup data,model update)
To get admin access, login as 'hpe', password 'changeit'

=====
To access HPE Systinet UI, use your web browser and type one of
the addresses:

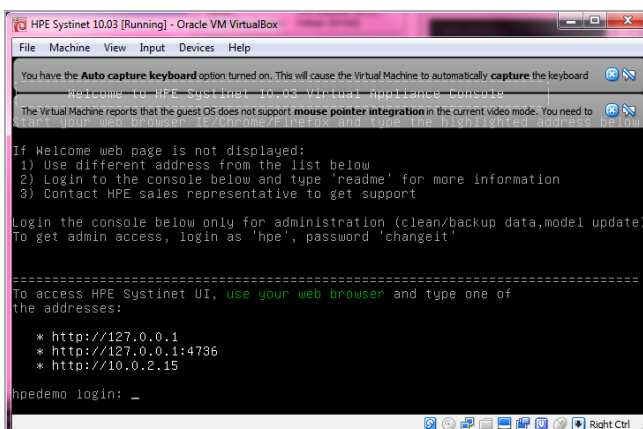
* http://127.0.0.1
* http://127.0.0.1:4736
* http://10.0.2.15

hpedemo login: _
```

Type the following command (appears in console help):

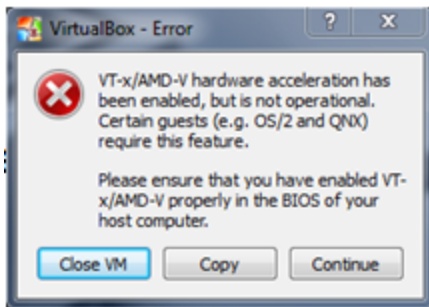
```
demo
```

# Clear the Data in HPE Systinet

**Login to the console:**login: **hpe**password: **changeit****Type the following command (appears in console help):****reset**

# Chapter 6: Enable Hardware Virtualization

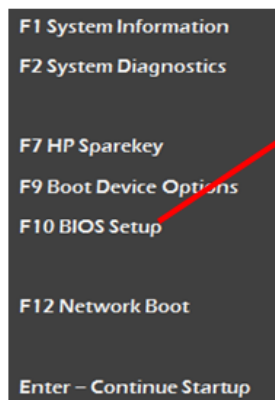
If you see the following dialog, follow the example steps below to enable hardware virtualization in BIOS on your computer:



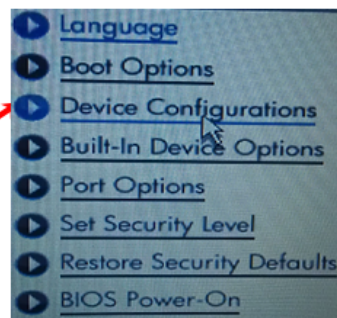
Step 1. Reboot your computer and press **F10 Bios Setup** during bootup.

Step 2. Select **Device Configurations**.

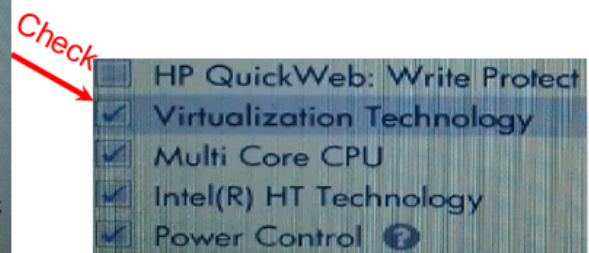
Step 3. Be sure the **Virtualization Technology** option is checked.



Step 1



Step 2



Step 3