



Asset Manager

Software Version: 9.62

Windows® and Linux® operating systems

Physical Data Models

Document Release Date: December 2016

Software Release Date: December 2016



Hewlett Packard
Enterprise

Legal Notices

Warranty

The only warranties for Hewlett Packard Enterprise products and services are set forth in the express warranty statements accompanying such products and services. Nothing herein should be construed as constituting an additional warranty. Hewlett Packard Enterprise shall not be liable for technical or editorial errors or omissions contained herein.

The information contained herein is subject to change without notice.

Restricted Rights Legend

Confidential computer software. Valid license from Hewlett Packard Enterprise required for possession, use or copying. Consistent with FAR 12.211 and 12.212, Commercial Computer Software, Computer Software Documentation, and Technical Data for Commercial Items are licensed to the U.S. Government under vendor's standard commercial license.

Copyright Notice

© 1994 - 2016 Hewlett Packard Enterprise Development LP

Trademark Notices

Adobe™ is a trademark of Adobe Systems Incorporated.

Microsoft® and Windows® are U.S. registered trademarks of Microsoft Corporation.

UNIX® is a registered trademark of The Open Group.

This product includes an interface of the 'zlib' general purpose compression library, which is Copyright © 1995-2002 Jean-loup Gailly and Mark Adler.

Documentation Updates

To check for recent updates or to verify that you are using the most recent edition of a document, go to: <https://softwaresupport.hpe.com/>.

This site requires that you register for an HP Passport and to sign in. To register for an HP Passport ID, click **Register** on the HPE Software Support site or click **Create an Account** on the HP Passport login page.

You will also receive updated or new editions if you subscribe to the appropriate product support service. Contact your HPE sales representative for details.

Support

Visit the HPE Software Support site at: <https://softwaresupport.hpe.com/>.

Most of the support areas require that you register as an HP Passport user and to sign in. Many also require a support contract. To register for an HP Passport ID, click **Register** on the HPE Support site or click **Create an Account** on the HP Passport login page.

To find more information about access levels, go to: <https://softwaresupport.hpe.com/web/softwaresupport/access-levels>.

HPE Software Solutions Now accesses the HPSW Solution and Integration Portal website. This site enables you to explore HPE Product Solutions to meet your business needs, includes a full list of Integrations between HPE Products, as well as a listing of ITIL Processes. The URL for this website is <https://softwaresupport.hpe.com/km/KM01702731>.

Contents

Chapter 1: Overview	5
Tables	6
Links	7
1-1 links	9
1-n and n-1 links	9
n-n links	9
Chapter 2: Portfolio	11
Models	12
Portfolio items	13
Assets	14
Assets linked to the procurement cycle	15
IT equipment	16
Cluster	17
Resource pool	17
Telephones	18
Ports and connections	18
Work Orders	19
Projects	20
Stocks	21
Software Installations	22
Cost Centers	23
Chapter 3: Procurement cycle	24
Procurement cycle	24
Purchase requests	25
Orders	26
Receptions	27
Invoices	28
Assets to be returned	29
Chapter 4: Contracts	30
Contracts	31

Chapter 5: Helpdesk	32
Helpdesk	33
Chapter 6: Financials	34
Budget and expenses	34
Chargebacks	35
Taxes	36
Chapter 7: Cable and Circuit	37
Cables and cable devices	38
Color codes	39
Label rules	40
Pair/conductor types	41
Cable duties	42
Slots	43
Topologies	44
Topology groups	45
Termination-field configurations	46
Cable links	47
Chapter 8: Administration	48
Access to the database	49
Workflows	50
Data health check	51
Chapter 9: Organization	52
Employees and Departments	53
Chapter 10: Catalog	54
Catalog	55
SAM	56
SAM	56
Send documentation feedback	57

Chapter 1: Overview

This guide presents diagrams that correspond to the physical data models in Asset Manager.

Each of these diagrams contains one or more tables used by the modules in Asset Manager.

Tables	6
Links	7

Tables

Each of the tables represented in this guide is identified by its SQL name.

Examples:

- The Portfolio items table uses the SQL name **amPortfolio**.
- The Assets table uses the SQL name **amAsset**.
- The Locations table uses the SQL name **amLocation**.
- The Employees and departments table uses the SQL name **amEmpIDept**.

The most important tables in each diagram are shown as the largest.

Examples:

- The Assets table (**amAsset**) in the "[Assets](#)" diagram on page [14](#).
- The Cables table (**amCable**) in the "[Cables and cable devices](#)" diagram on page [38](#).
- The Taxes table (**amTax**) in the "[Taxes](#)" diagram on page [36](#).

Links

1-1 links	9
1-n and n-1 links	9
n-n links	9

There are three types of links between tables:

- 1-1 links
- 1-n and n-1 links
- n-n links


Each of the links represented in this guide is identified by its SQL name.

Examples:

- The link going from the Portfolio items table (**amPortfolio**) to the Employees and departments table (**amEmpIDept**) has the SQL name **User**.
- The link going from the Employees and departments table (**amEmpIDept**) to the Portfolio items table (**amPortfolio**) has the SQL name **ItemsUsed**.

Note: The SQL name of a link assumes that one of the linked tables is the source table and the other is the destination table. Thus, the **User** link between the source table (**amPortfolio**) indicates that the link points to the user record of the destination table (**amEmpIDept**). Its reverse link, though, is named **ItemsUsed**. This link points to the records of the assets used by a given user. In this case, the source table is that of Employees and departments and the destination table is that of portfolio items.

In an effort not to overload our diagrams, reverse links are not represented. The choice of a link and its reverse link is arbitrary. If you want to find out what the SQL name of a reverse link is:

1. Launch Asset Manager Application Designer.
2. Open your database description.
3. Select the table of your choice.
4. Click .

5. Select a link.
6. The SQL name of its reverse link is indicated in the **Reverse link** field.

1-1 links

This kind of link means that:

- One record in the source table is linked to one record in the destination table.

Example: The **Asset** link between the Computers table (**amComputer**) and the Assets table (**amAsset**) in the "IT equipment" diagram on page 16. This link indicates that only one computer record can be linked to only one asset record.

1-n and n-1 links

A 1-n link means that:

- One record from the source table can be linked to several records in the destination table.
- Several records in the destination table can be linked to one record in the source table.

Example: The **Rents** link between the Contracts table (**amContracts**) and the Contract rents (**amCntrRent**) table in the "Contracts" diagram on page 31. This link indicates that one contract record can be linked to several contract rent records.

A n-1 link means that:

- Several records in the source table can be linked to one record in the destination table.
- One record in the destination table can be linked to several records in the source table.

Example: The **Model** link between the Assets table (**amAsset**) and the Models table (**amModel**) in the "Models" diagram on page 12. This link indicates that several asset records can correspond to the same model record.

n-n links

This type of link means that:

- Several records in the source table can be linked to several records in the destination table.

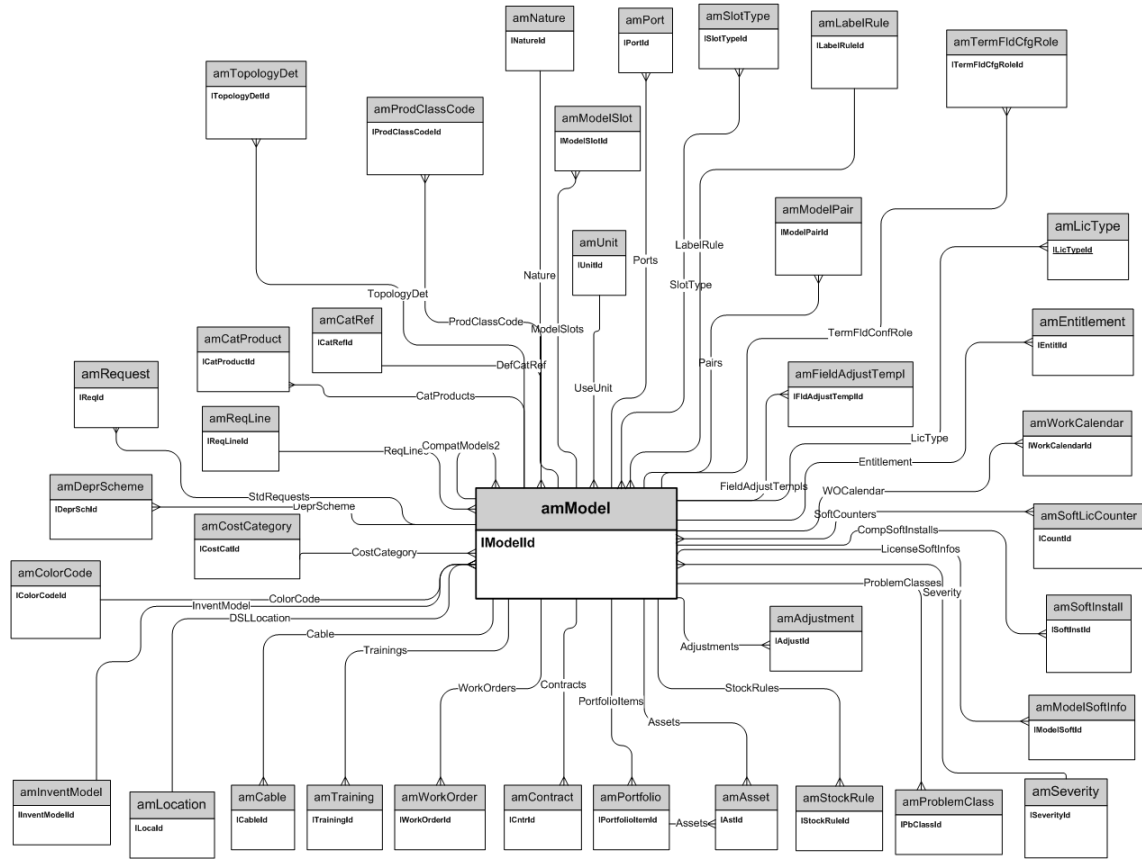
Example: The **FuncRights** link between the User profiles table (**amProfile**) and the Functional rights table (**amFuncRight**) in the [Access to the database](#) diagram on page 49. This link indicates that an asset record can be linked to several functional right records and that a functional right record can be linked to several user profile records.

Chapter 2: Portfolio

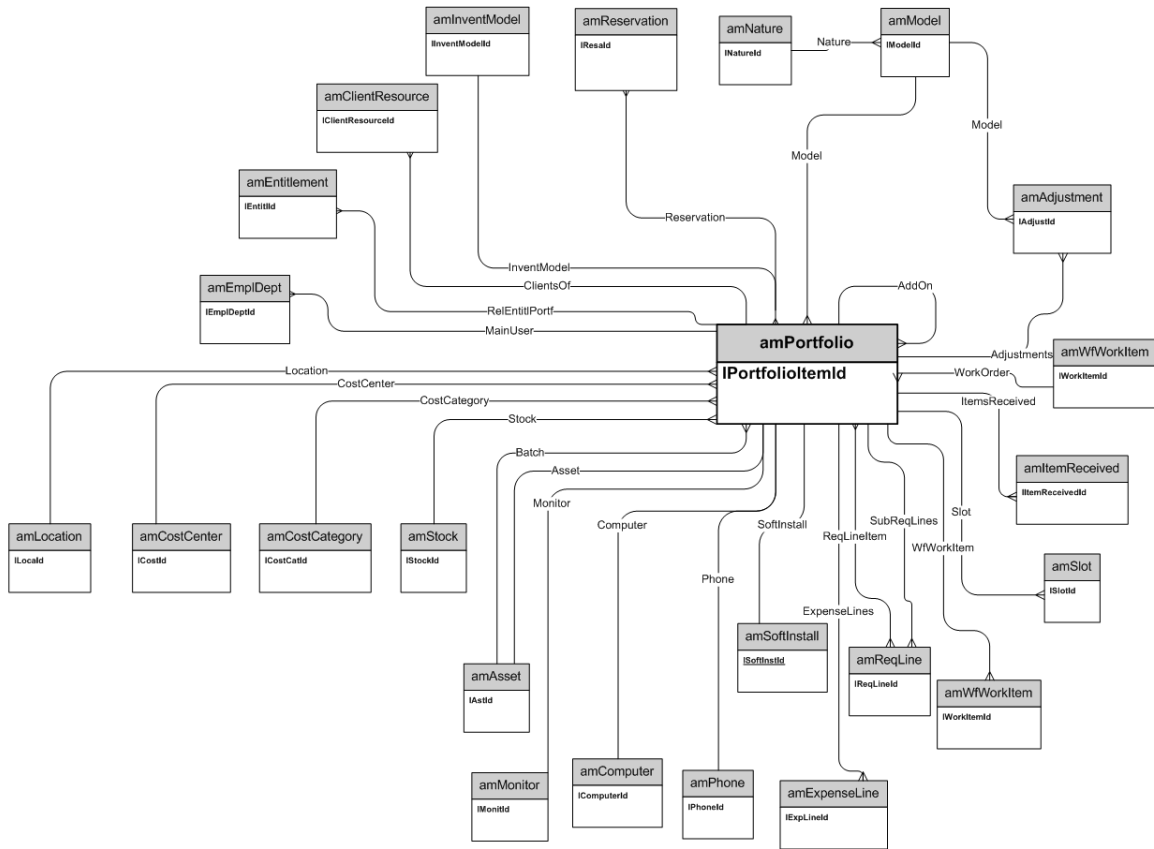
This chapter presents diagrams of the following physical data models:

Models	12
Portfolio items	13
Assets	14
Assets linked to the procurement cycle	15
IT equipment	16
Cluster	17
Resource pool	17
Telephones	18
Ports and connections	18
Work Orders	19
Projects	20
Stocks	21
Software Installations	22
Cost Centers	23

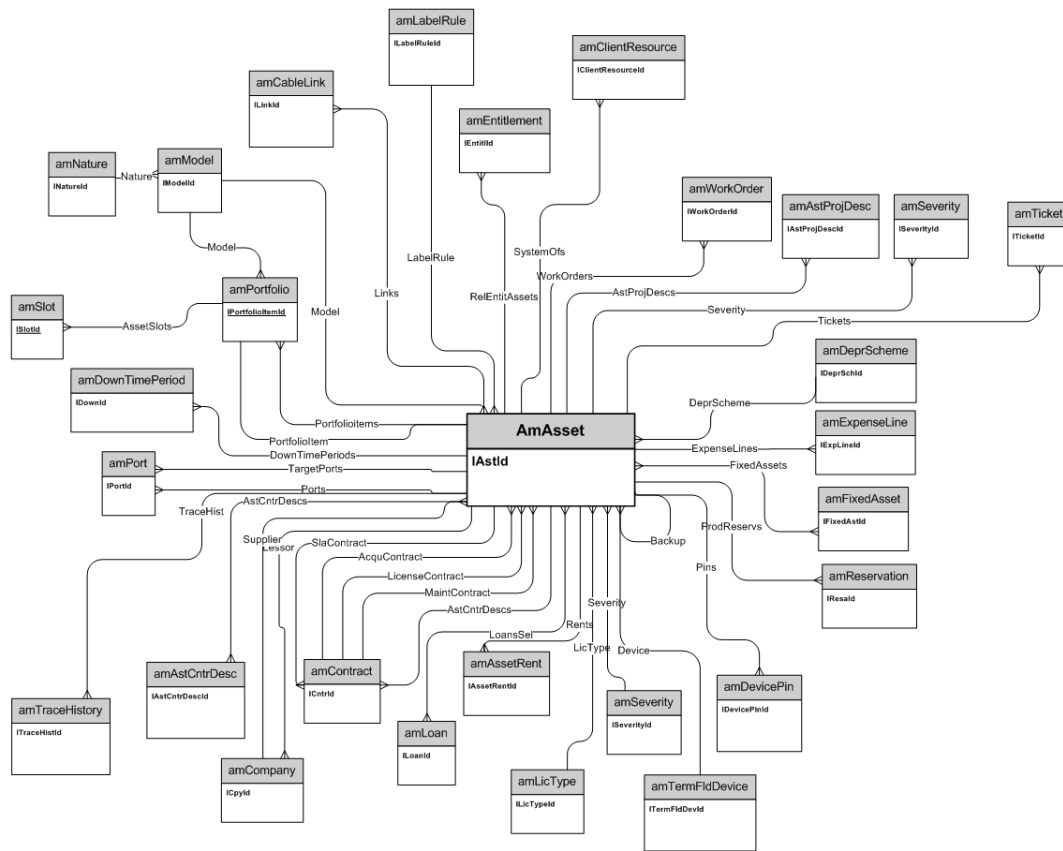
Models



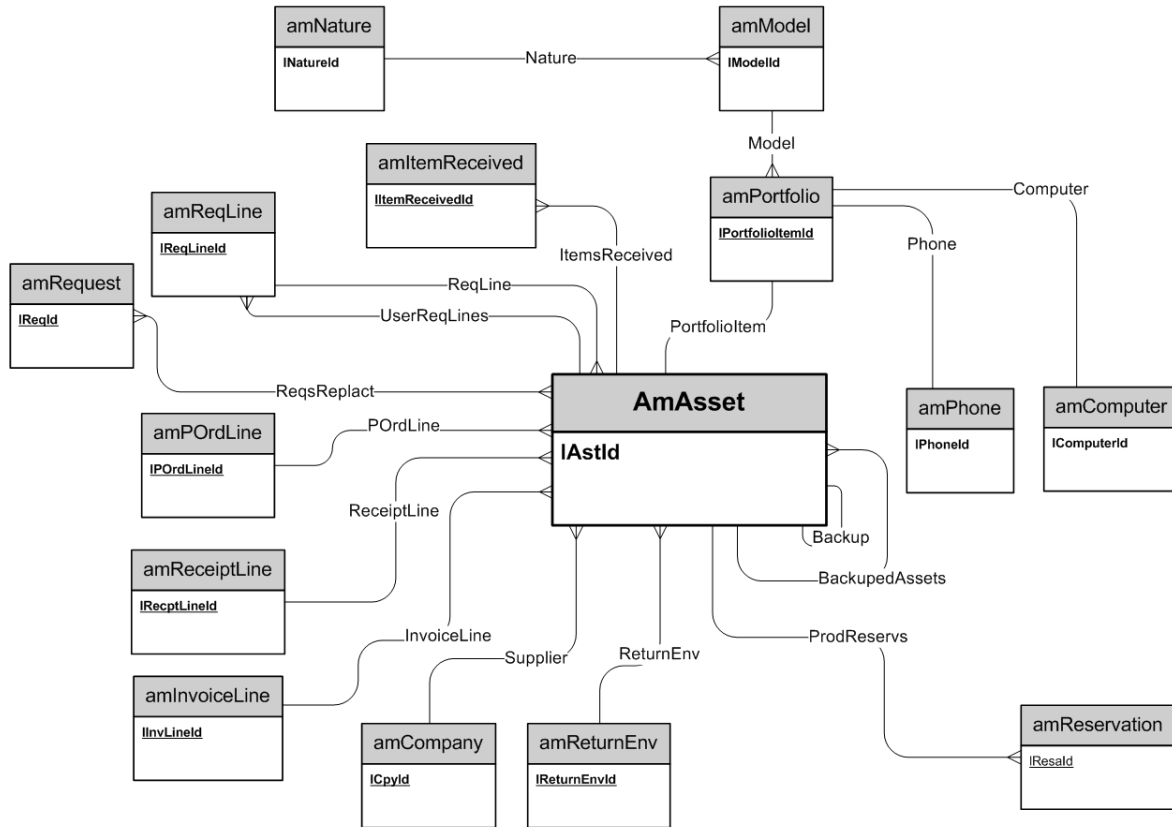
Portfolio items



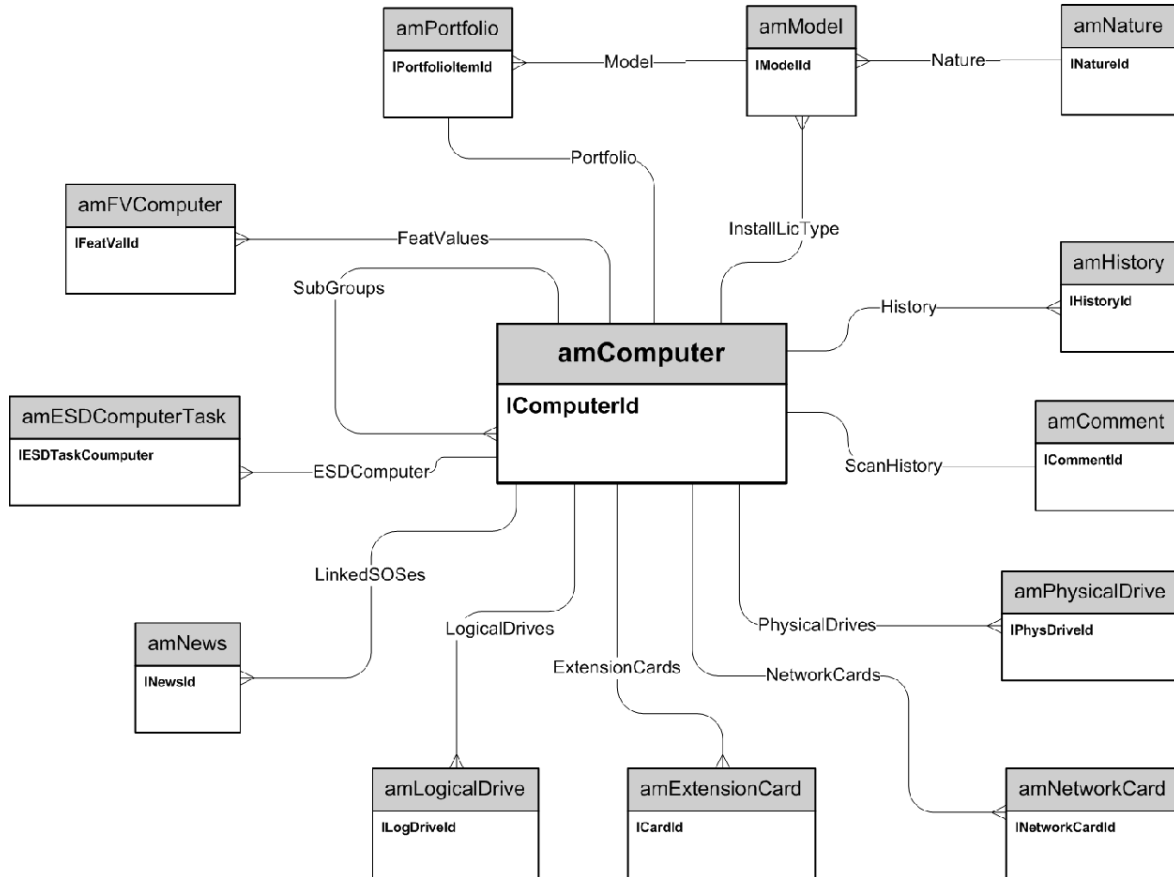
Assets



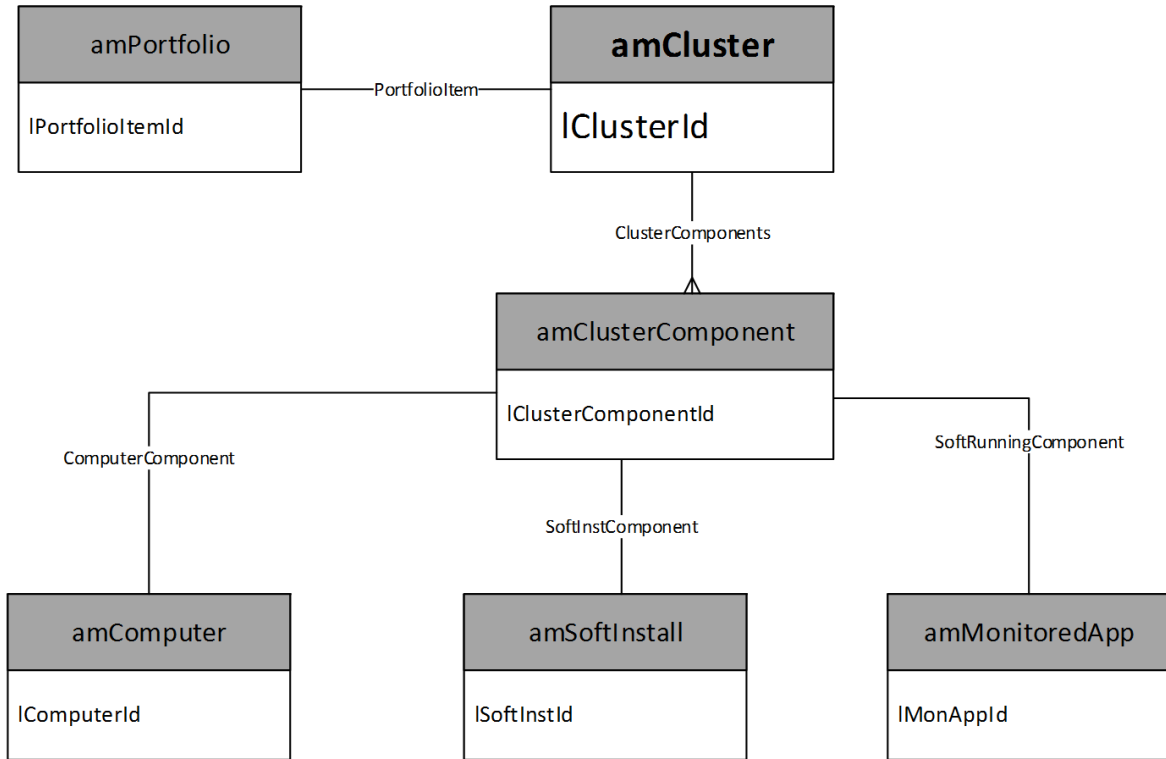
Assets linked to the procurement cycle



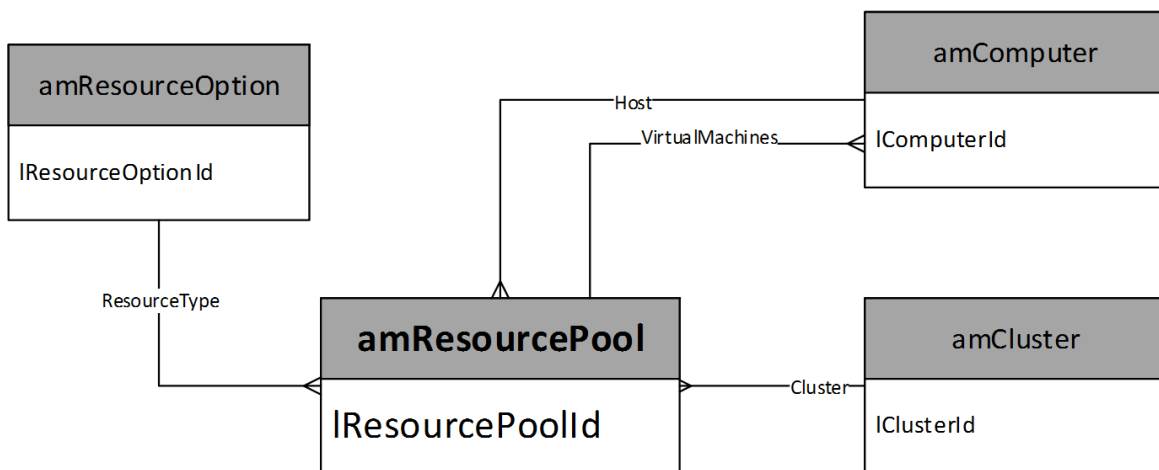
IT equipment



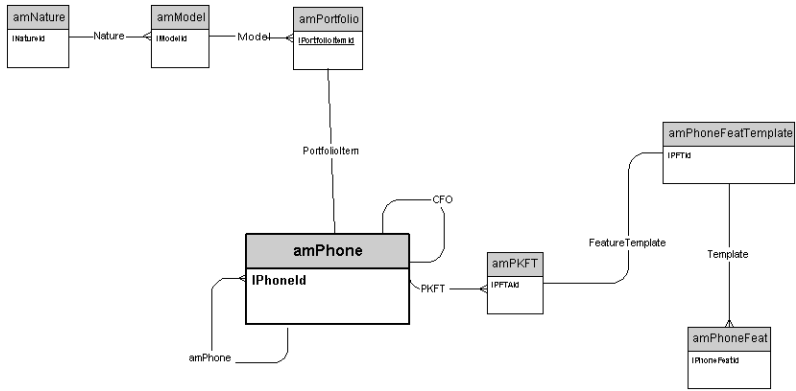
Cluster



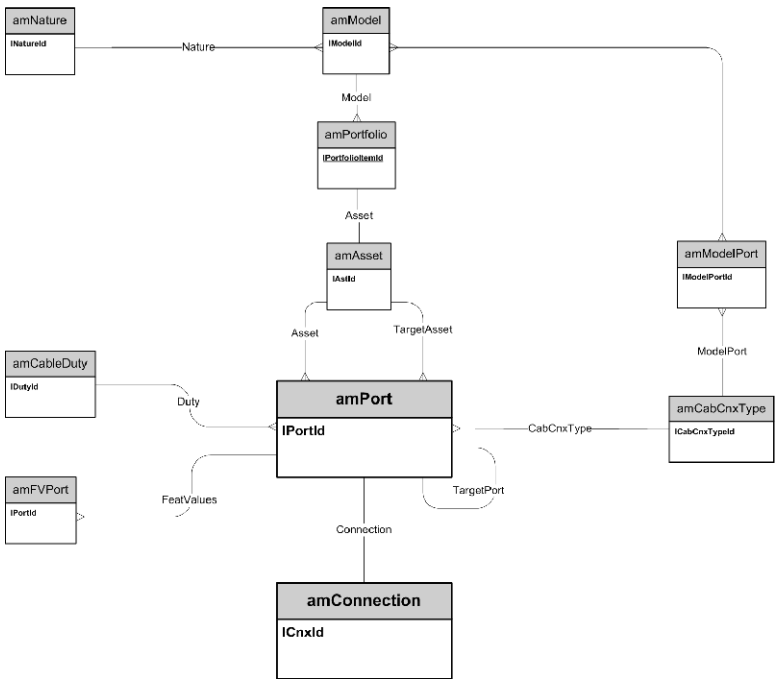
Resource pool



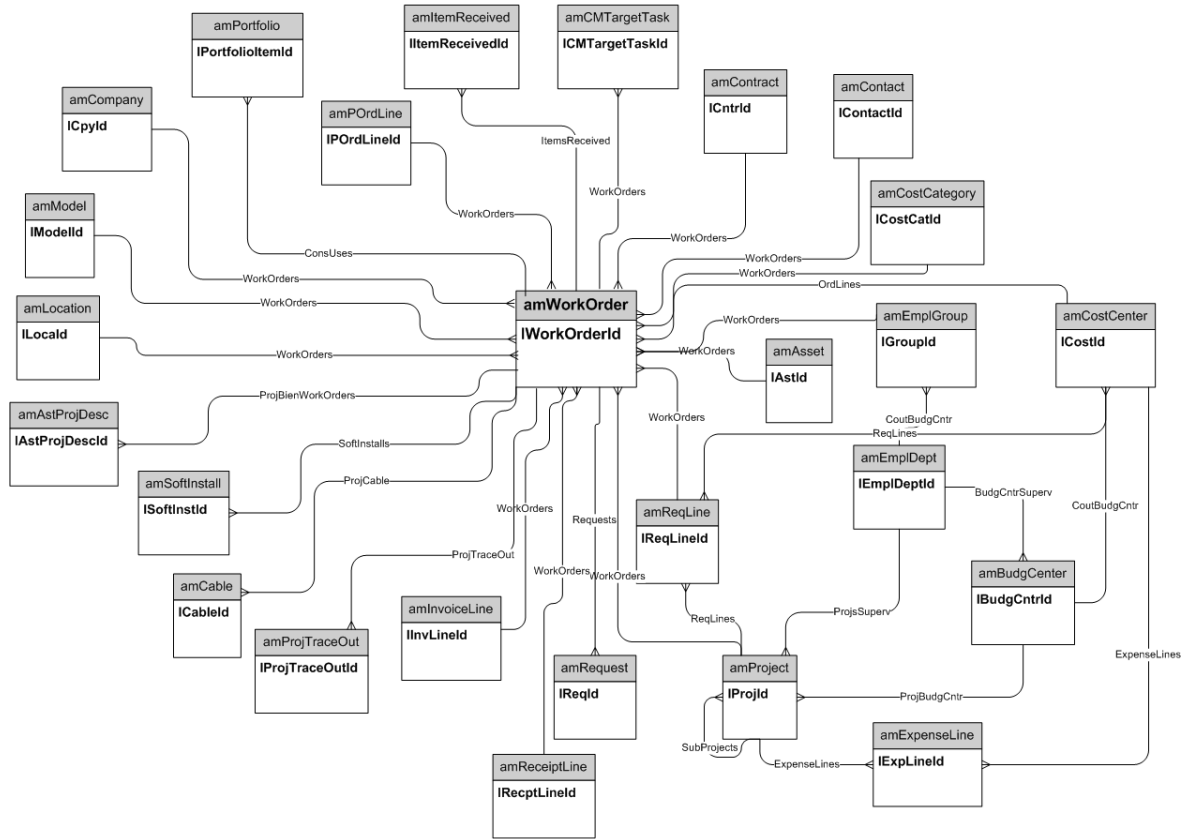
Telephones



Ports and connections

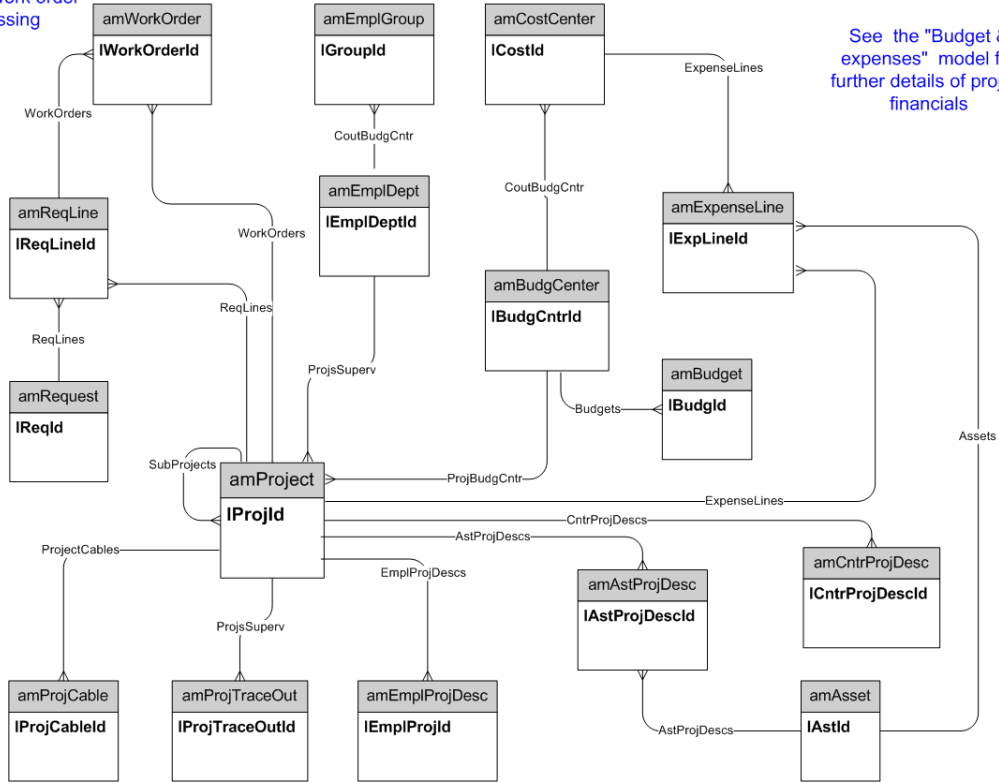


Work Orders



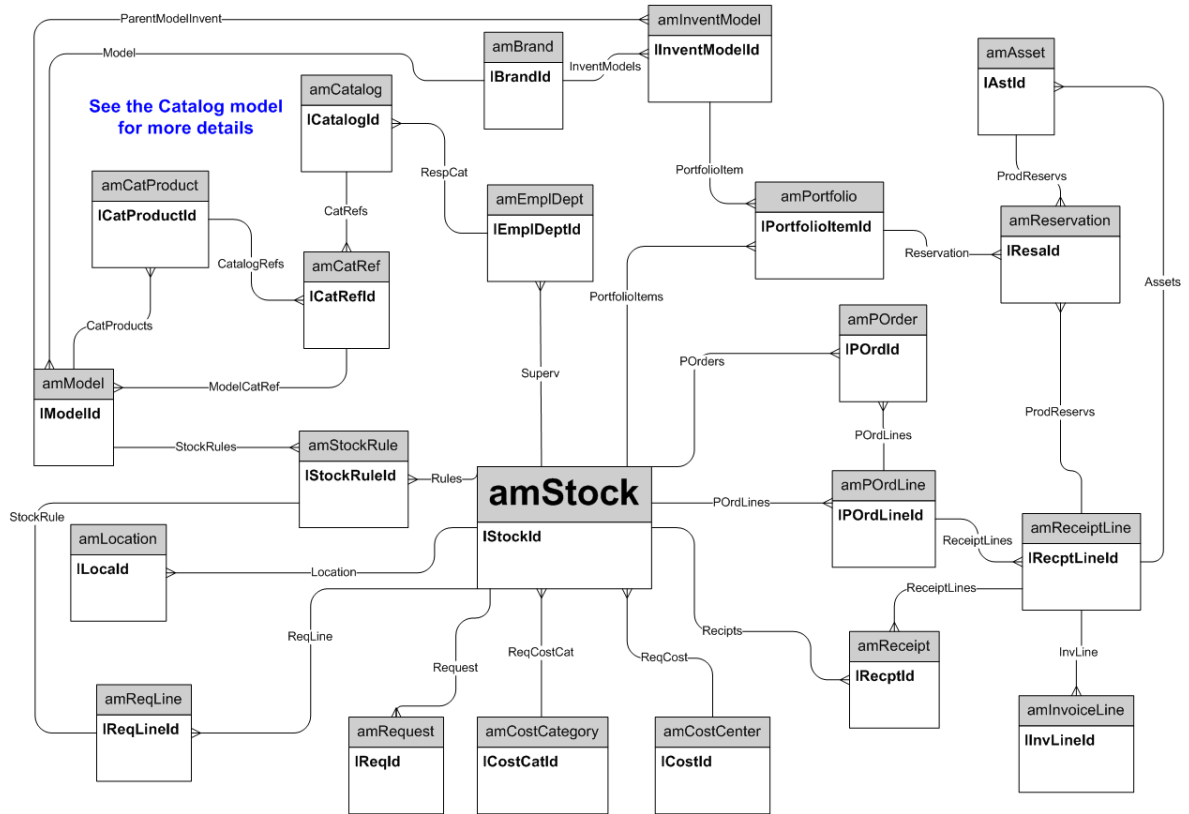
Projects

See the "Work Orders" model for further details of work order processing

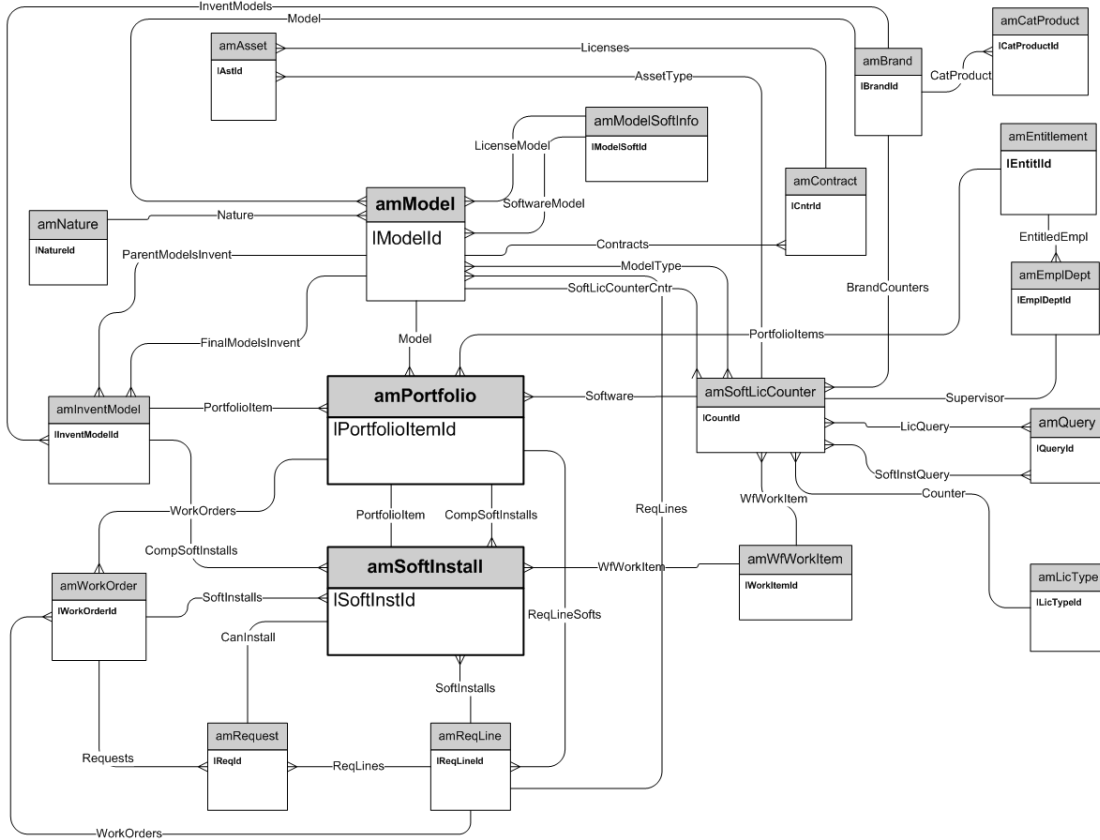


See the "Budget & expenses" model for further details of project financials

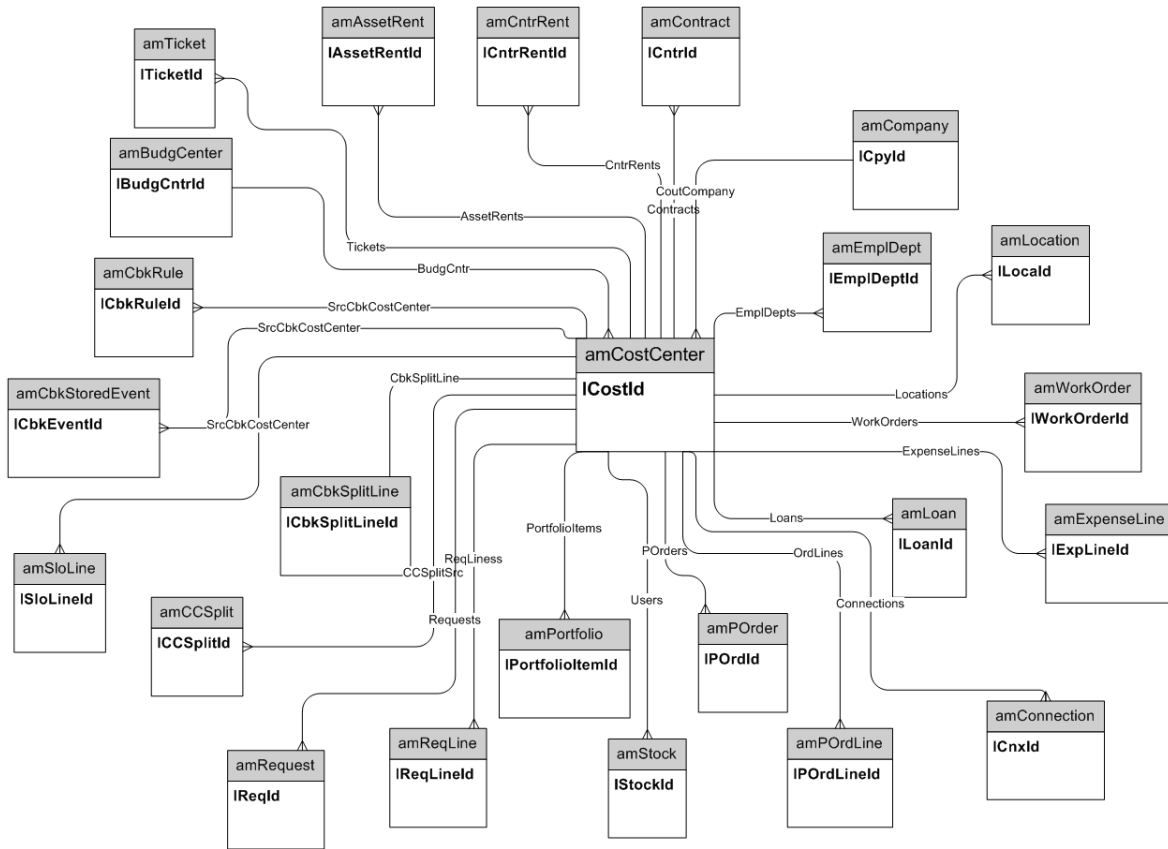
Stocks



Software Installations



Cost Centers

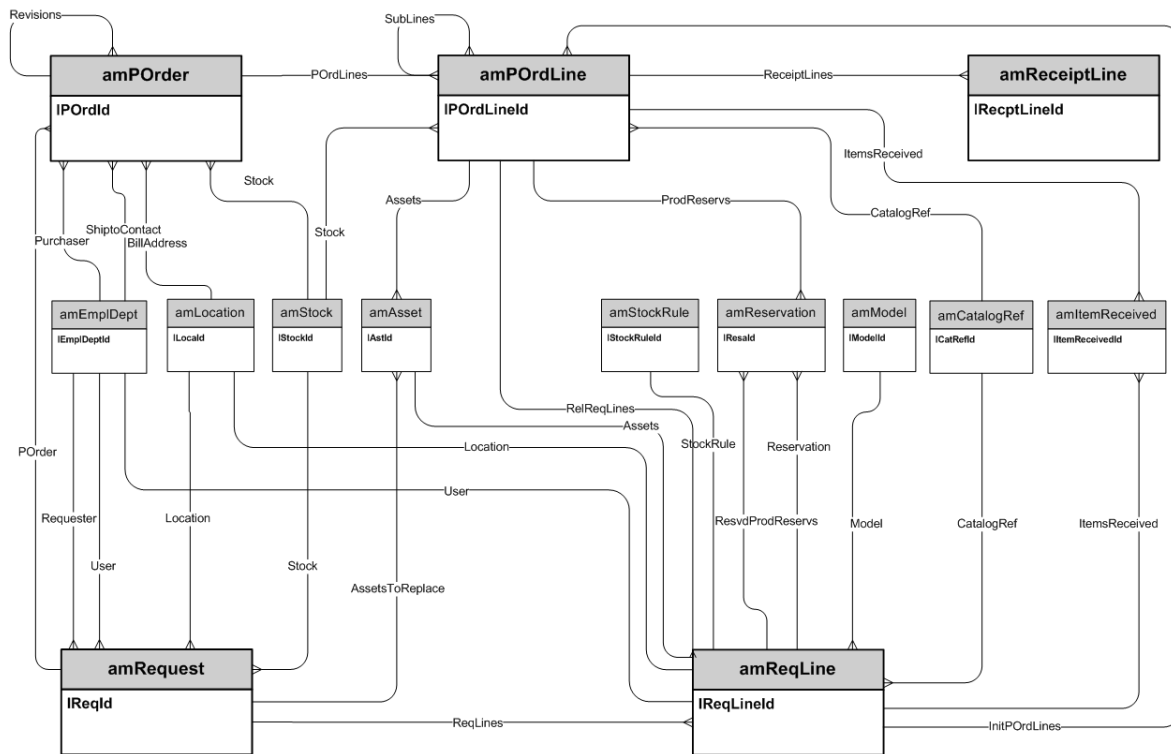


Chapter 3: Procurement cycle

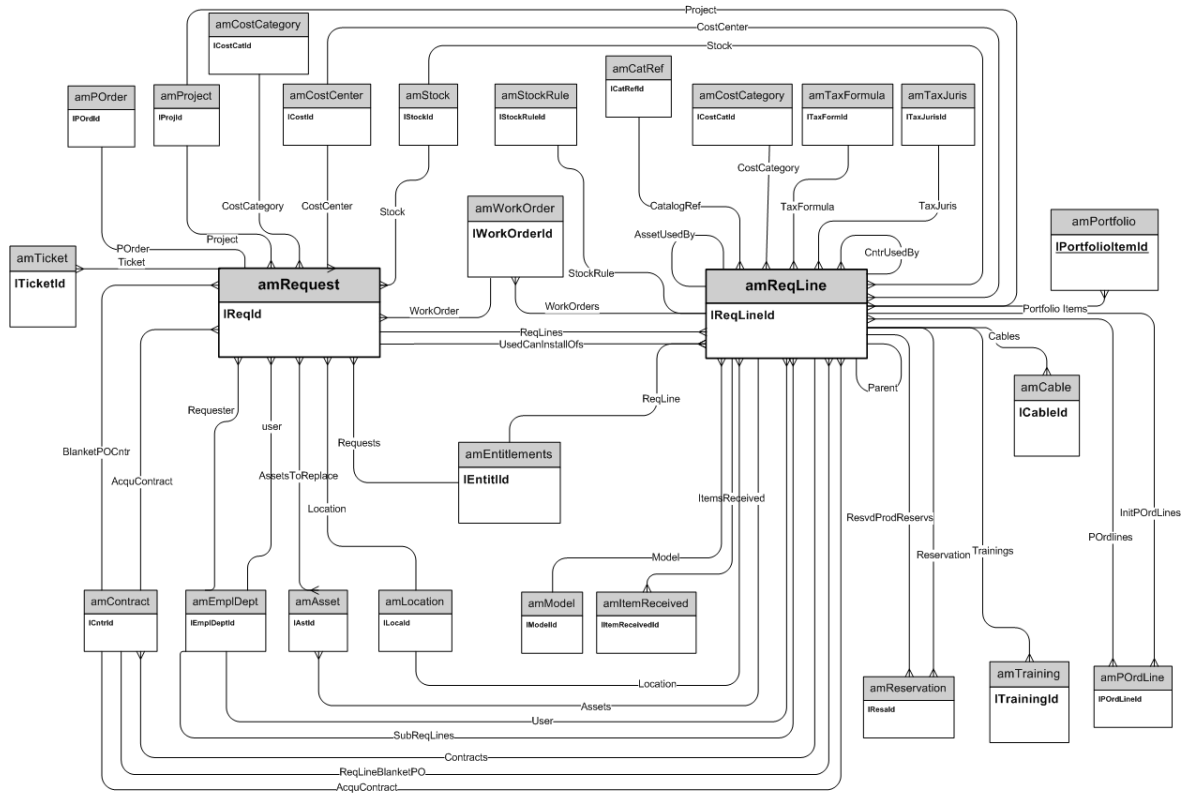
This chapter presents diagrams of the following physical data models:

- Procurement cycle 24
- Purchase requests 25
- Orders 26
- Receptions 27
- Invoices 28
- Assets to be returned 29

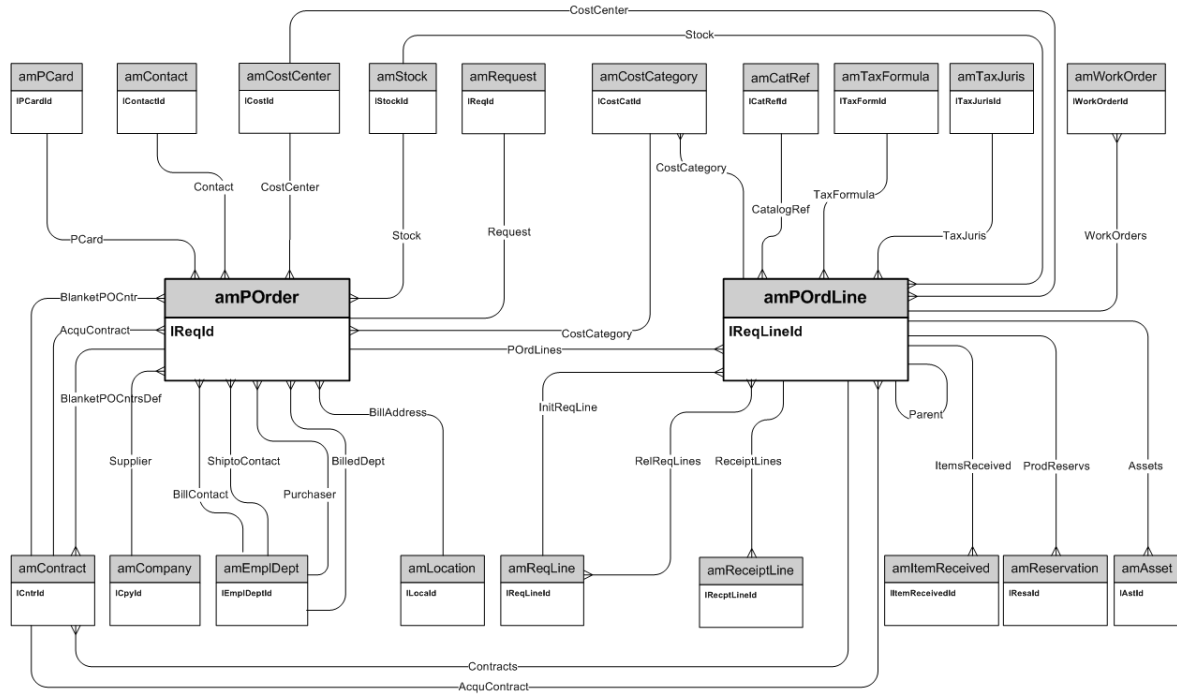
Procurement cycle



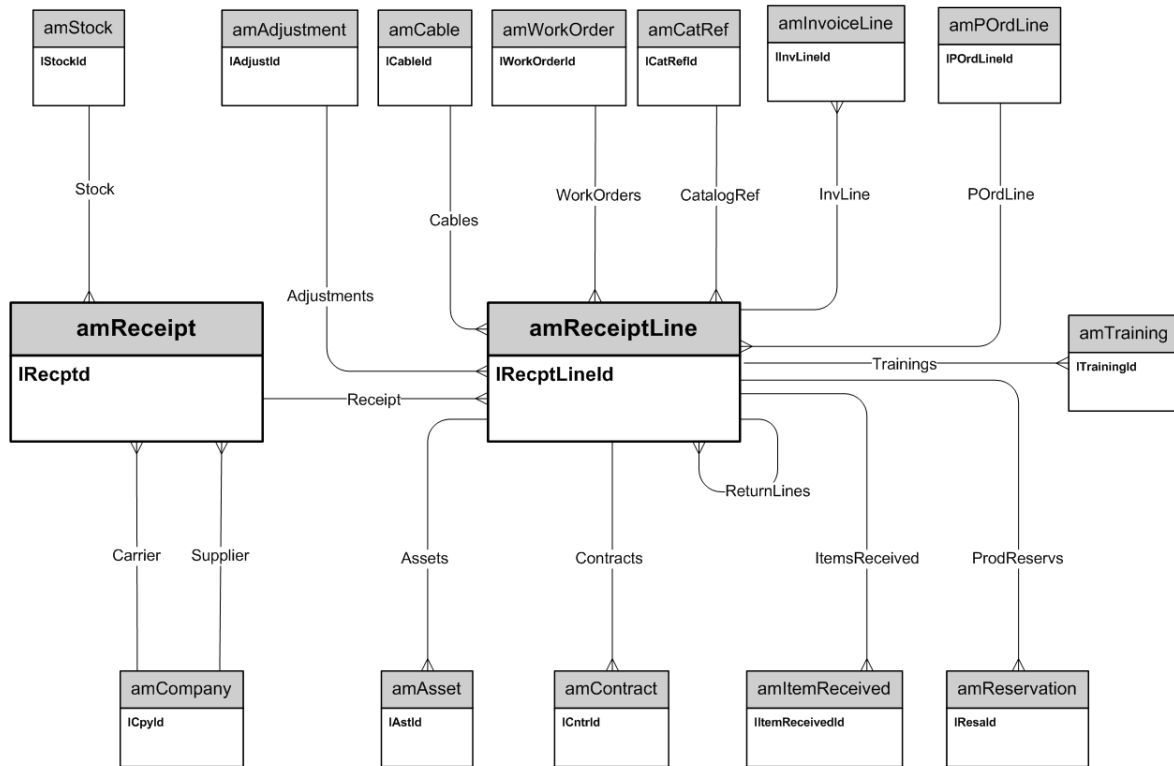
Purchase requests



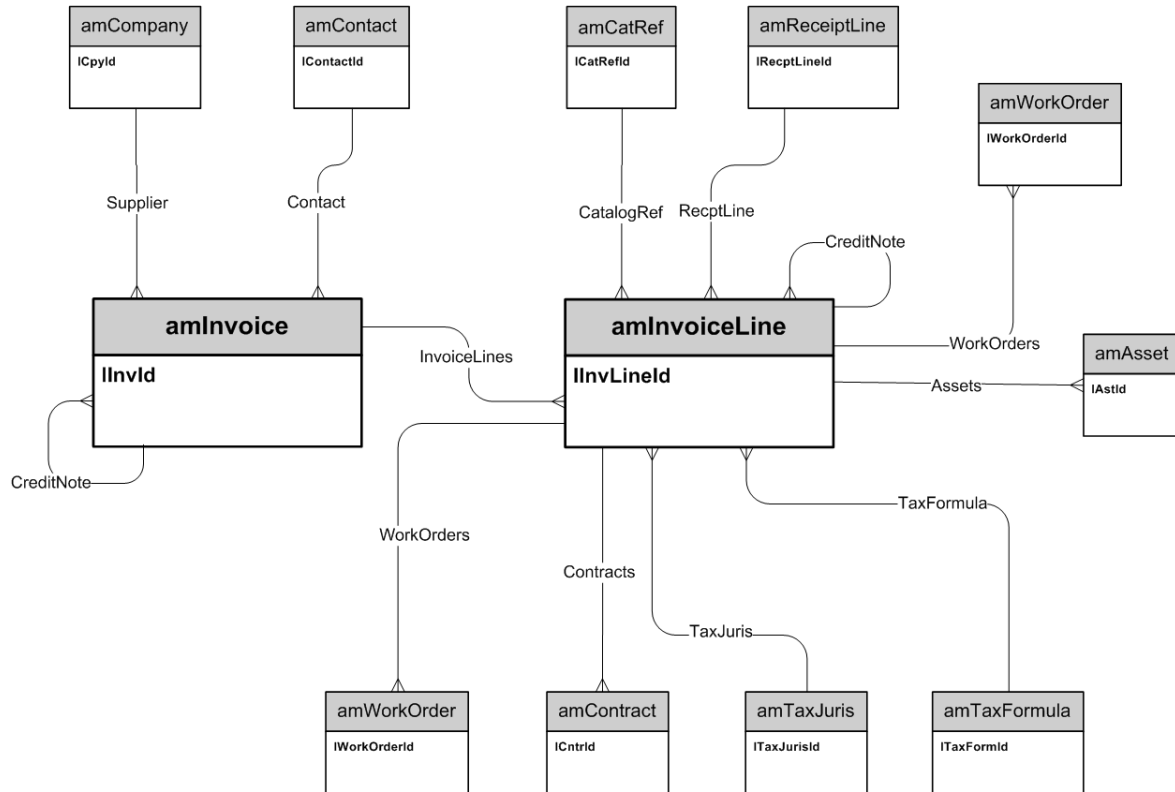
Orders



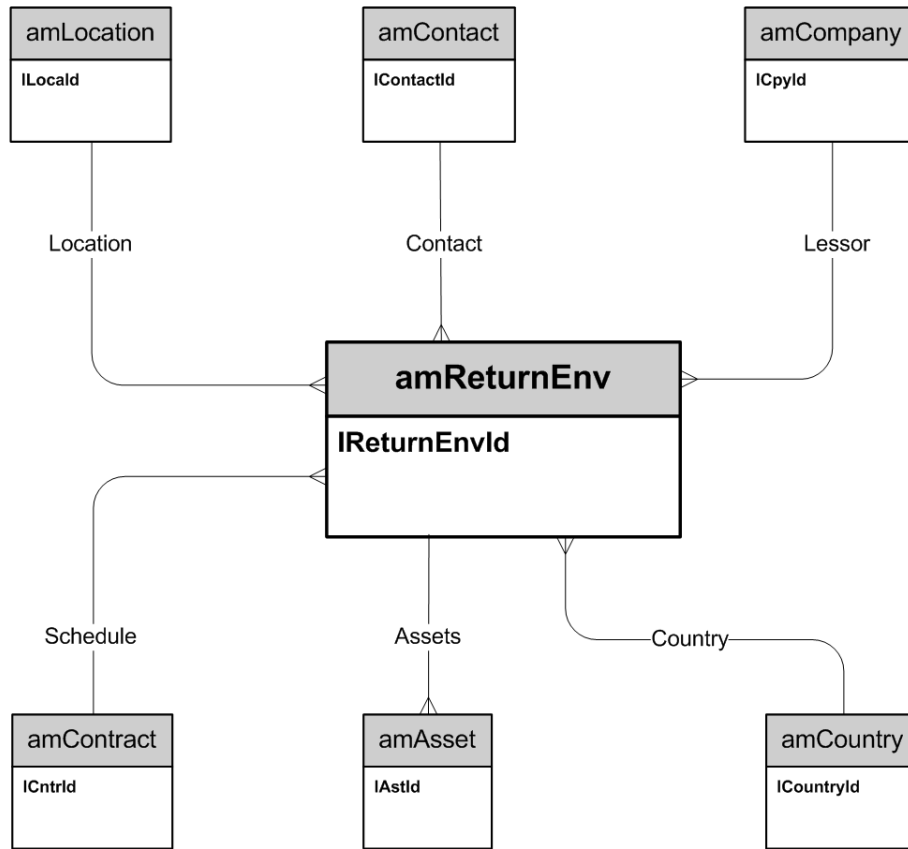
Receptions



Invoices



Assets to be returned

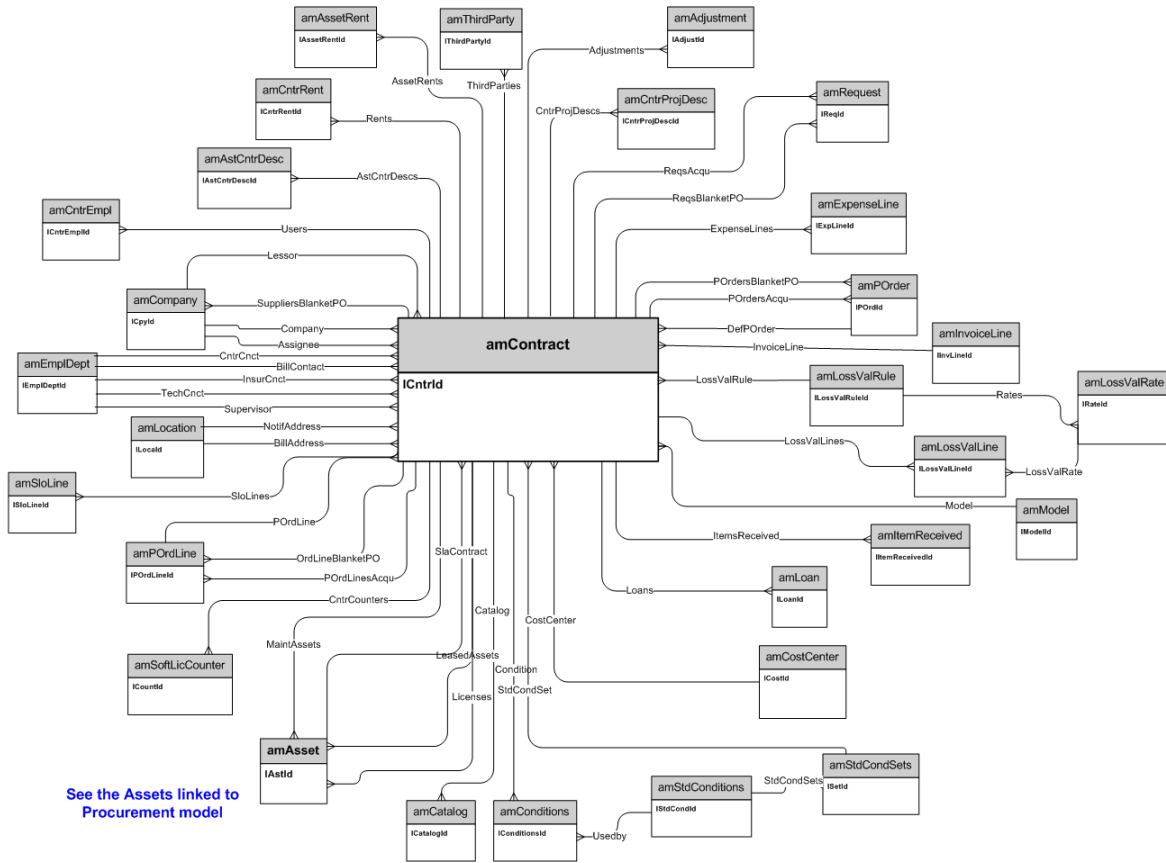


Chapter 4: Contracts

This chapter presents the diagram of the following physical data model:

Contracts	31
-----------------	----

Contracts

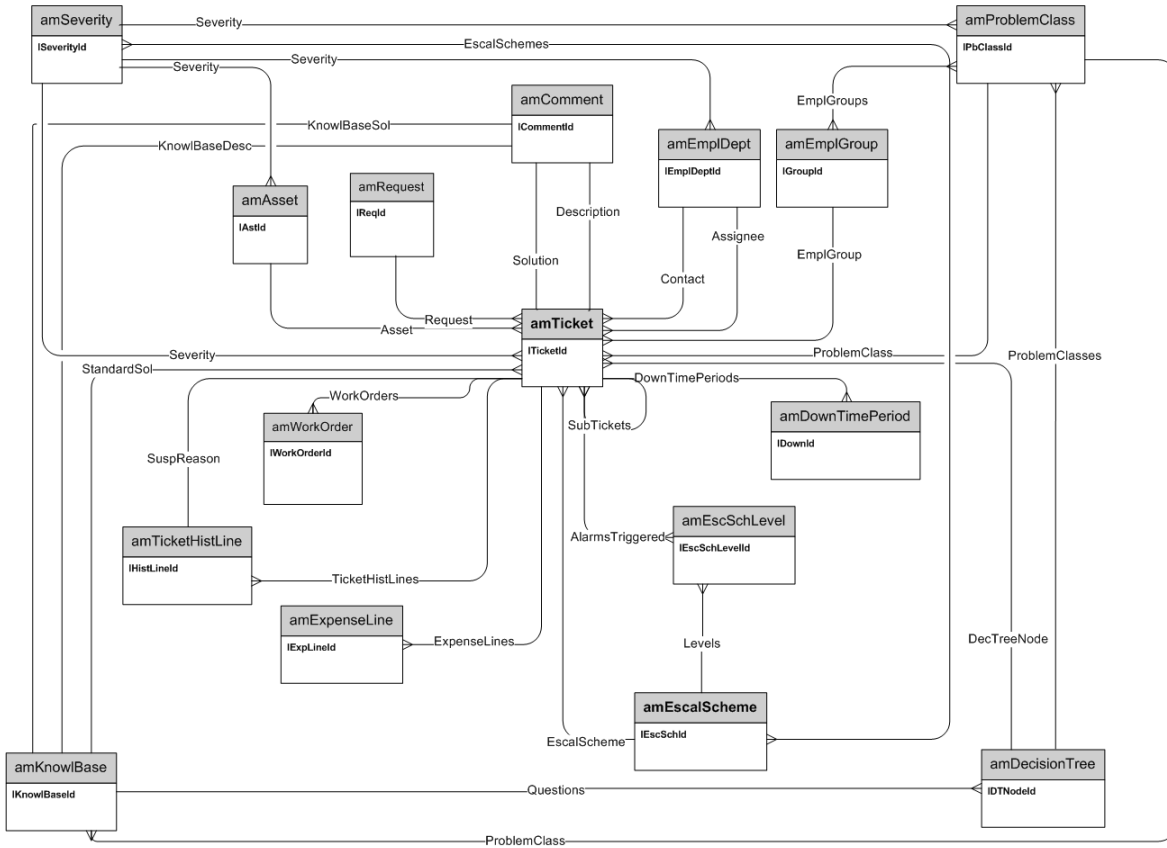


Chapter 5: Helpdesk

This chapter presents the diagram of the following physical data model:

Helpdesk	33
----------------	----

Helpdesk

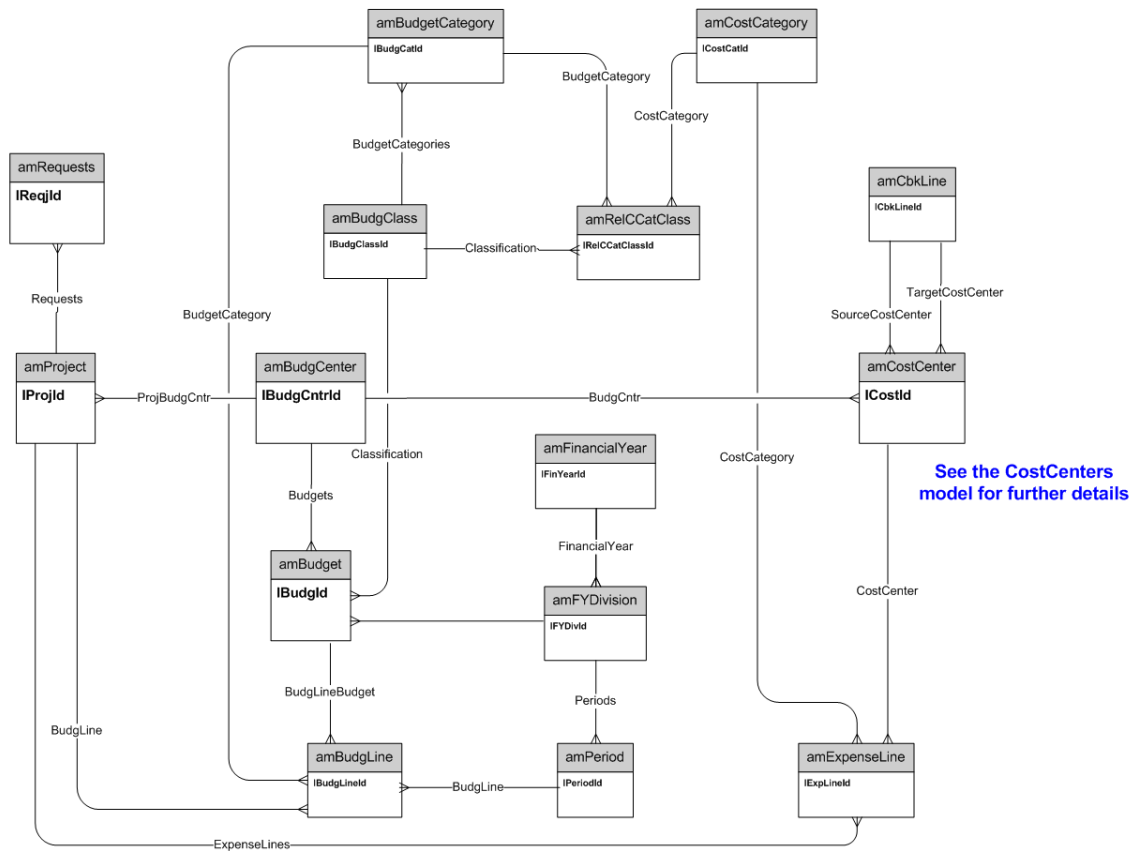


Chapter 6: Financials

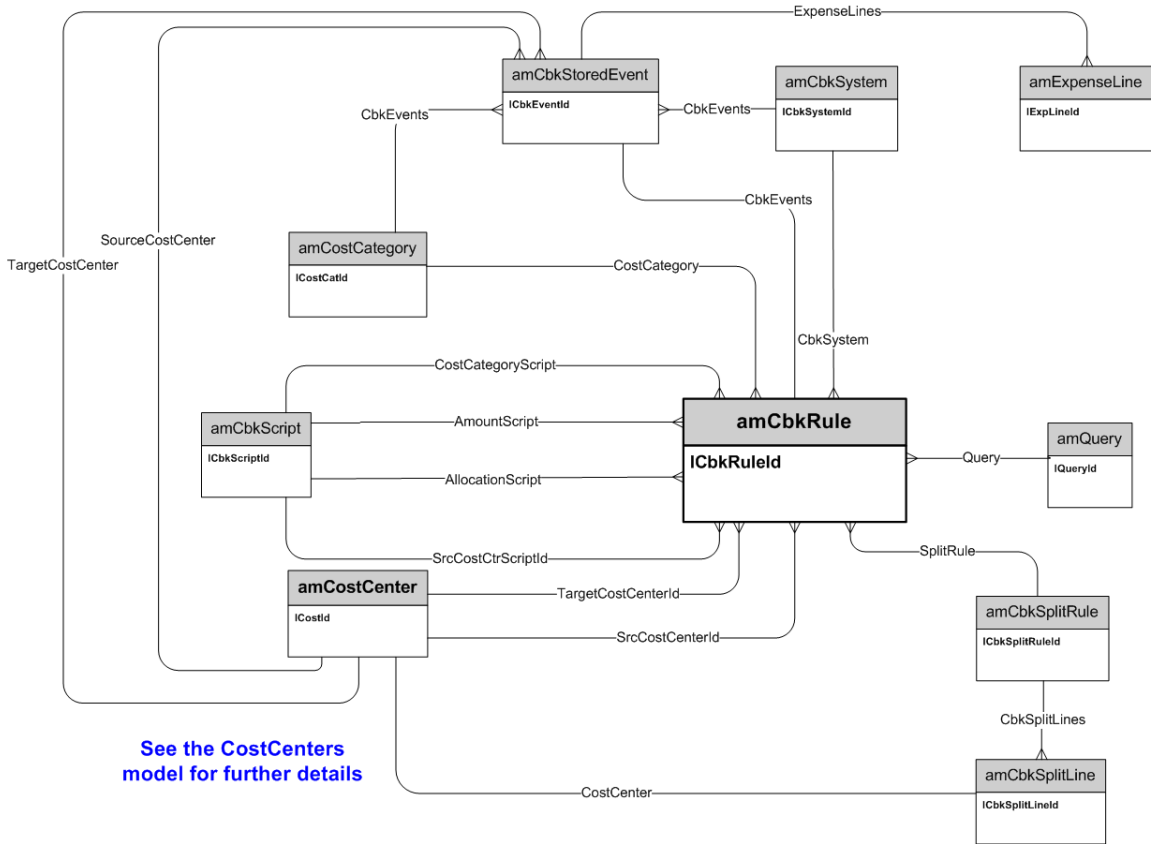
This chapter presents diagrams of the following physical data models:

Budget and expenses	34
Chargebacks	35
Taxes	36

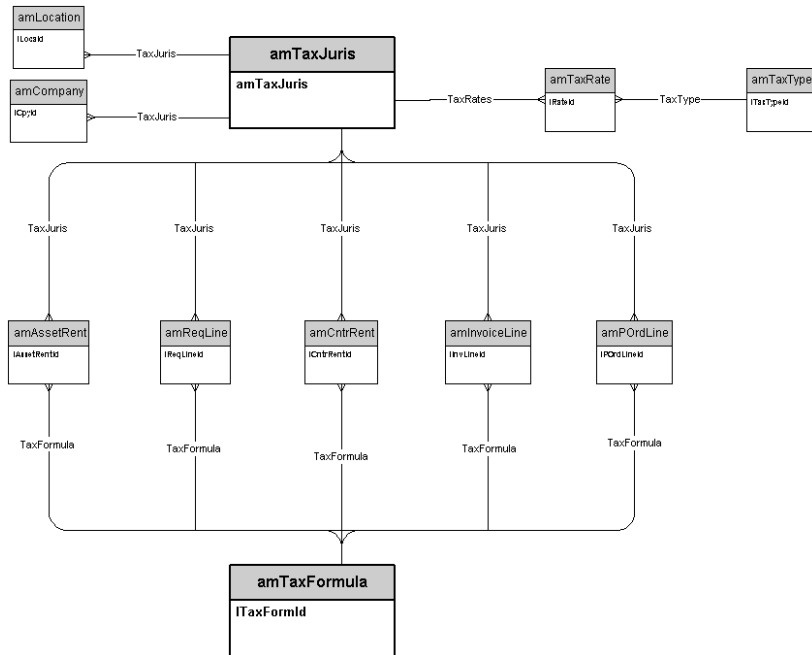
Budget and expenses



Chargebacks



Taxes

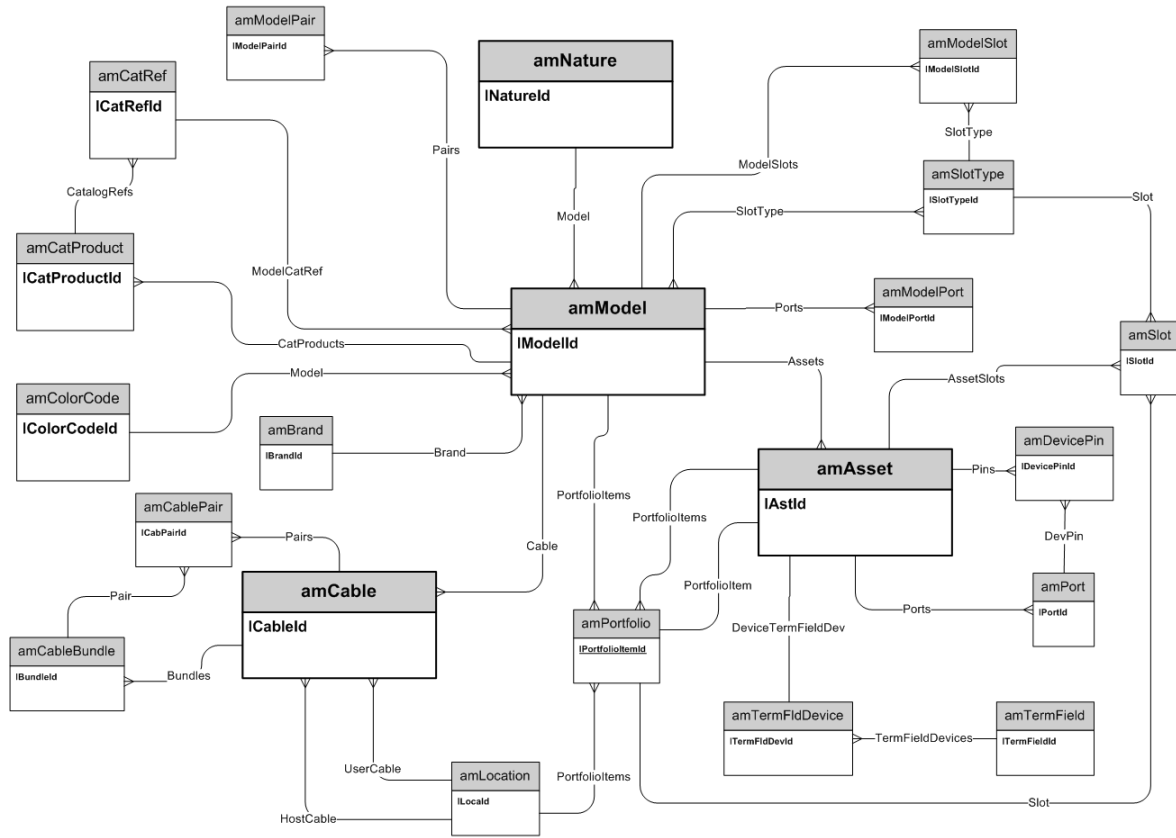


Chapter 7: Cable and Circuit

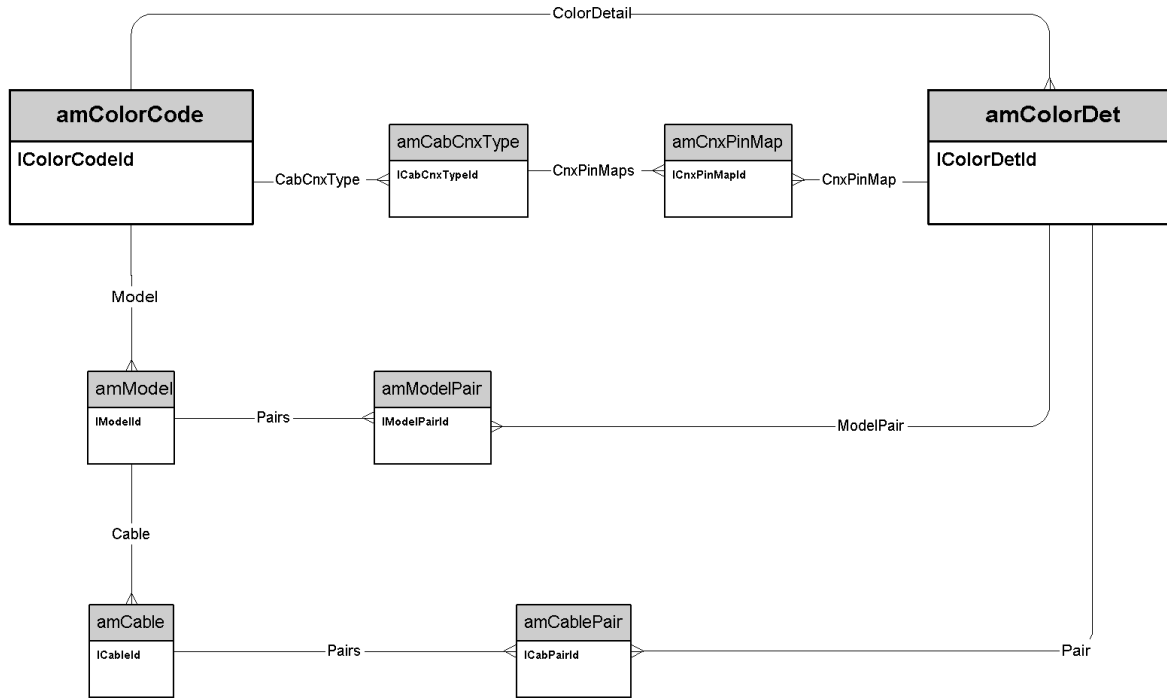
This chapter presents diagrams of the following physical data models:

Cables and cable devices	38
Color codes	39
Label rules	40
Pair/conductor types	41
Cable duties	42
Slots	43
Topologies	44
Topology groups	45
Termination-field configurations	46
Cable links	47

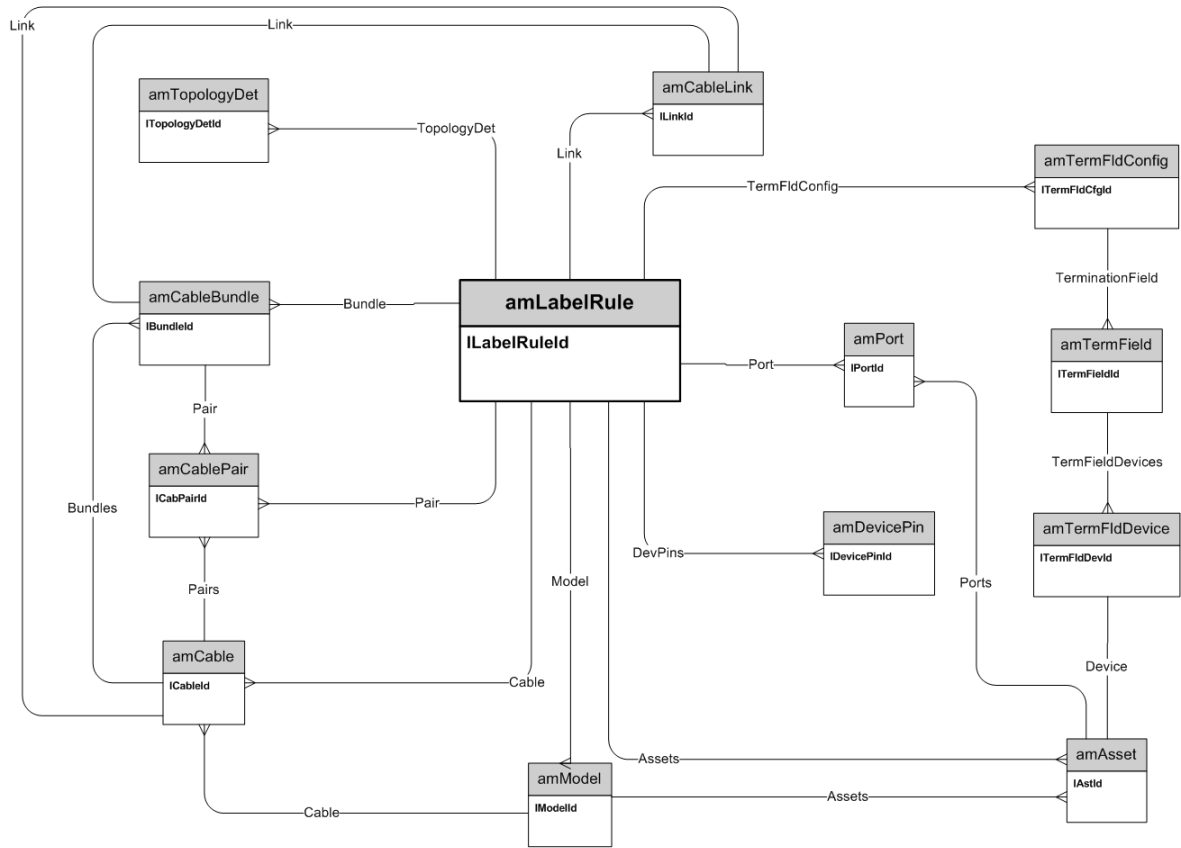
Cables and cable devices



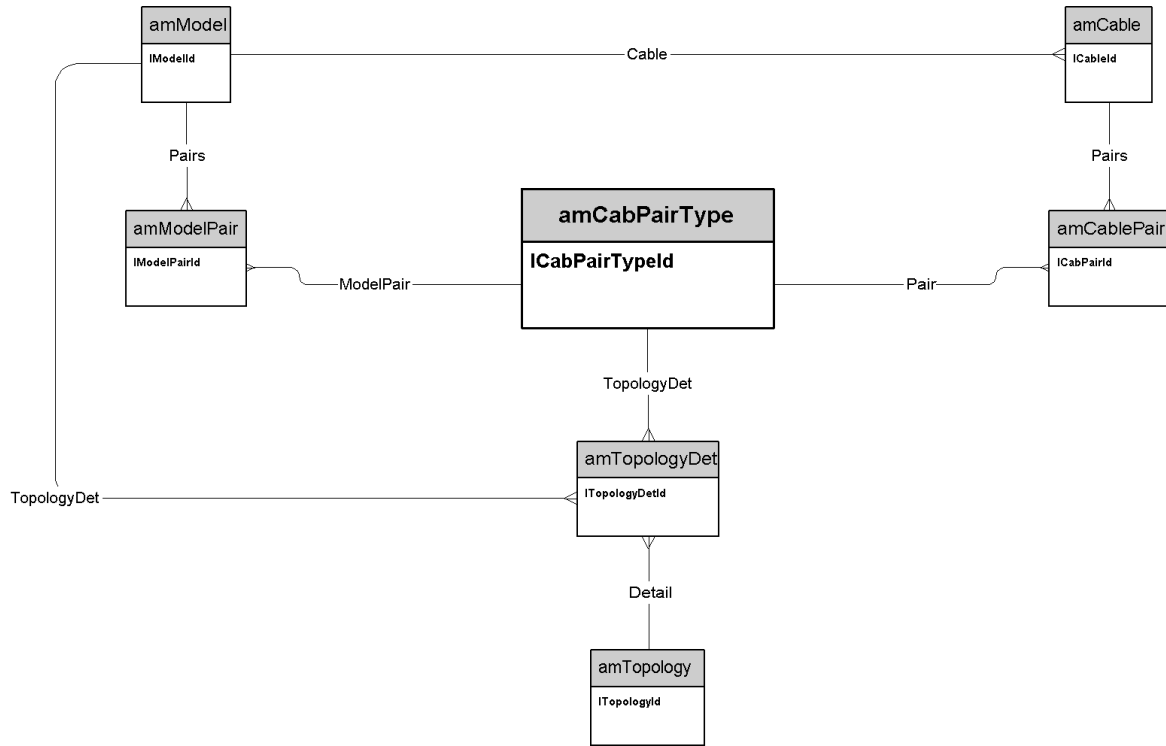
Color codes



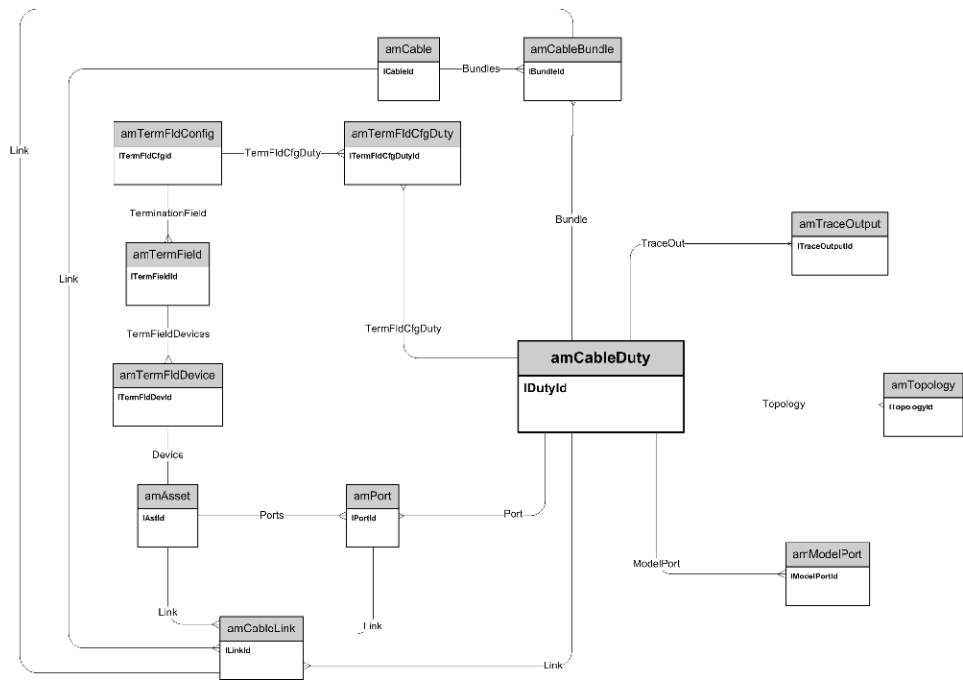
Label rules



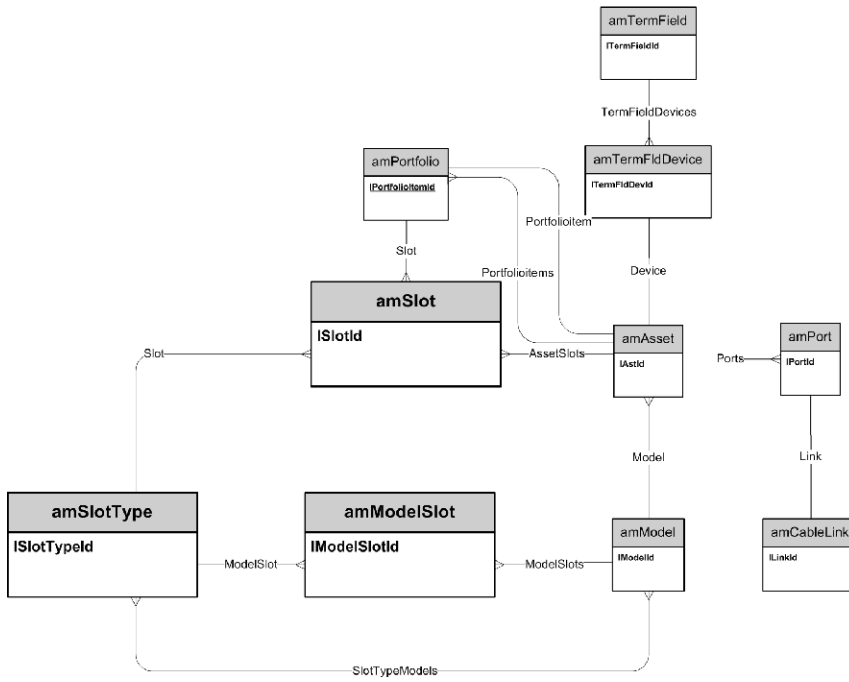
Pair/conductor types



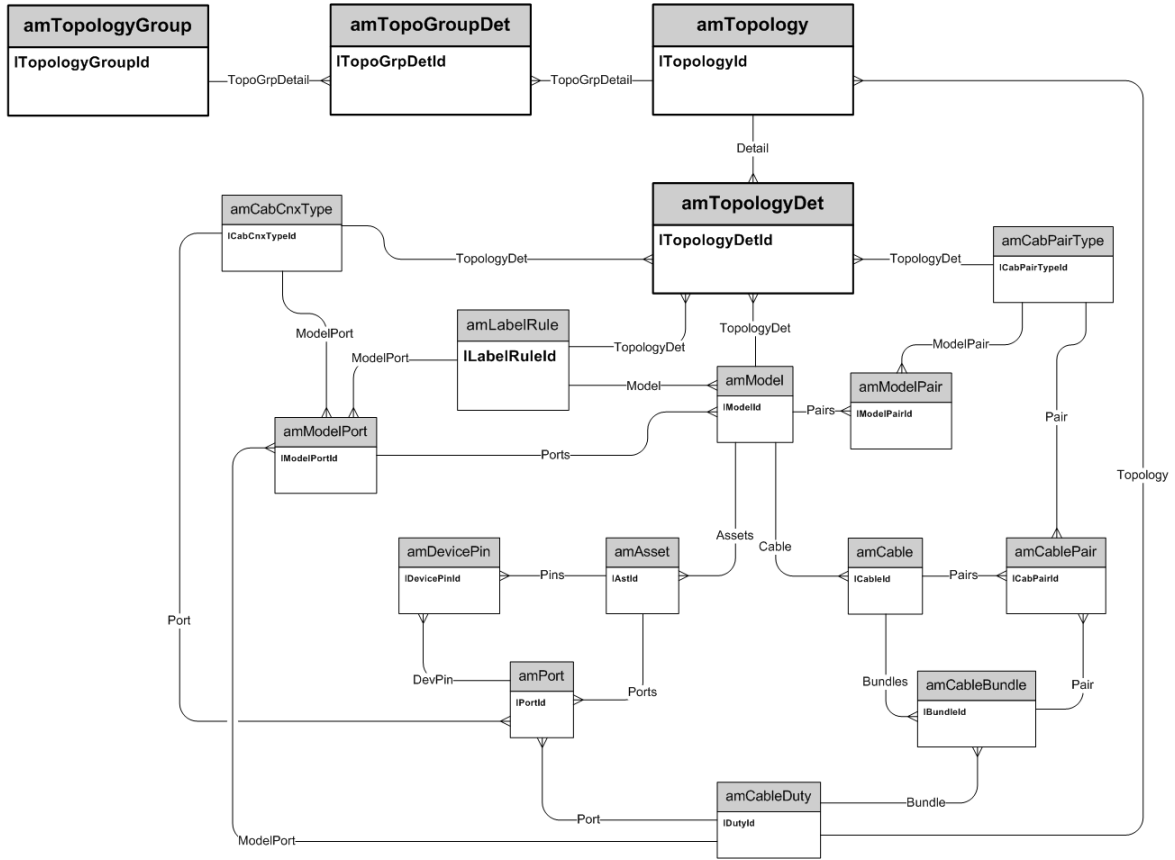
Cable duties



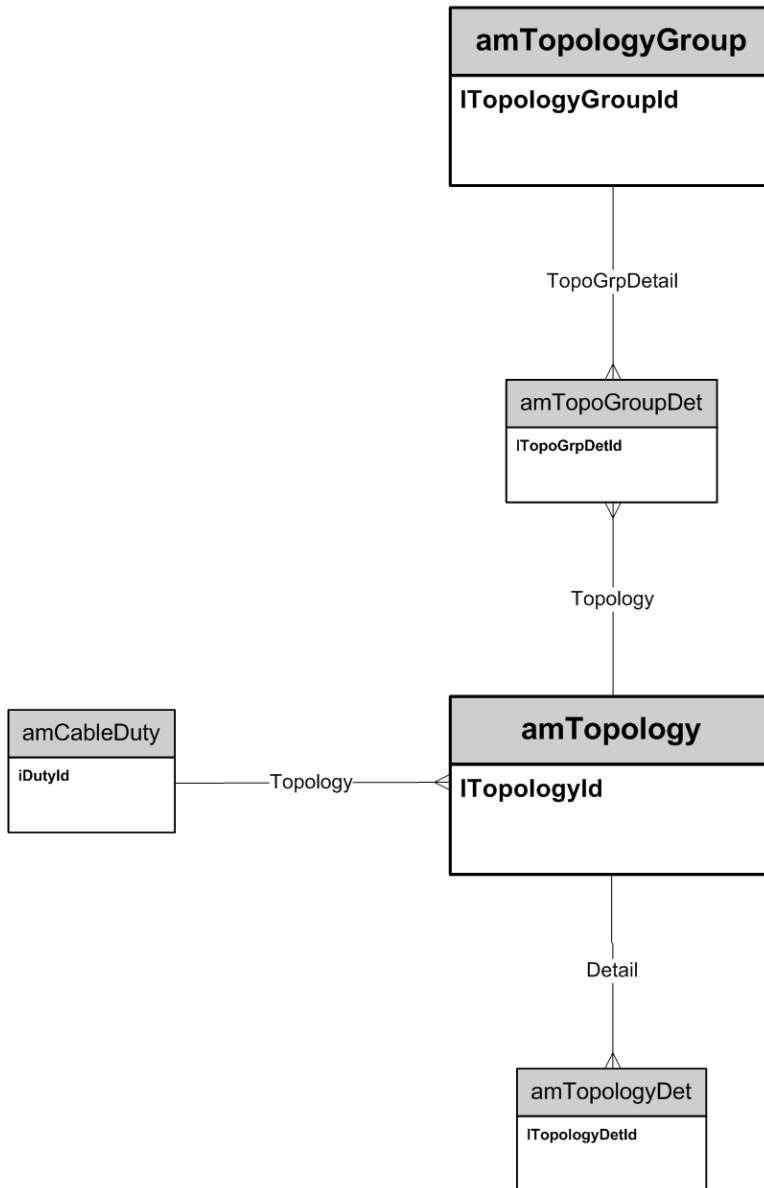
Slots



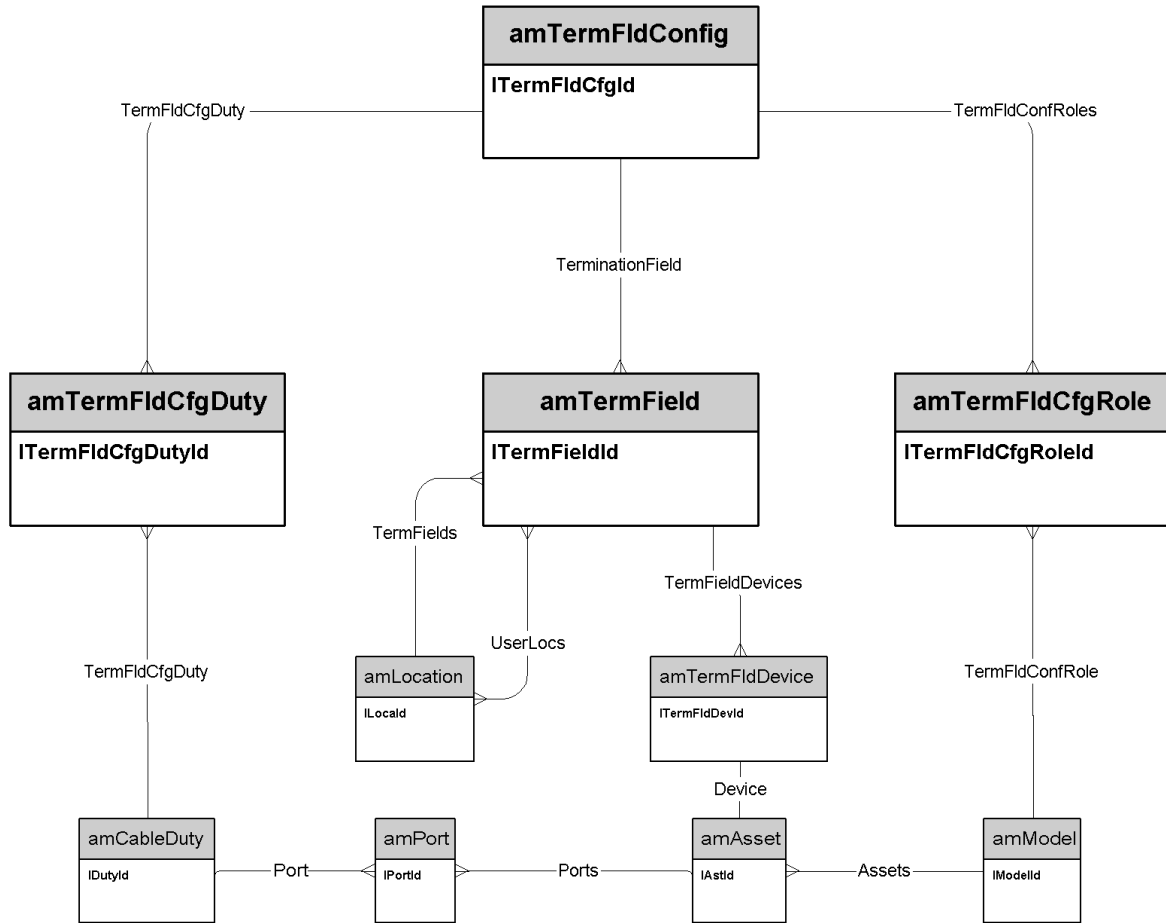
Topologies



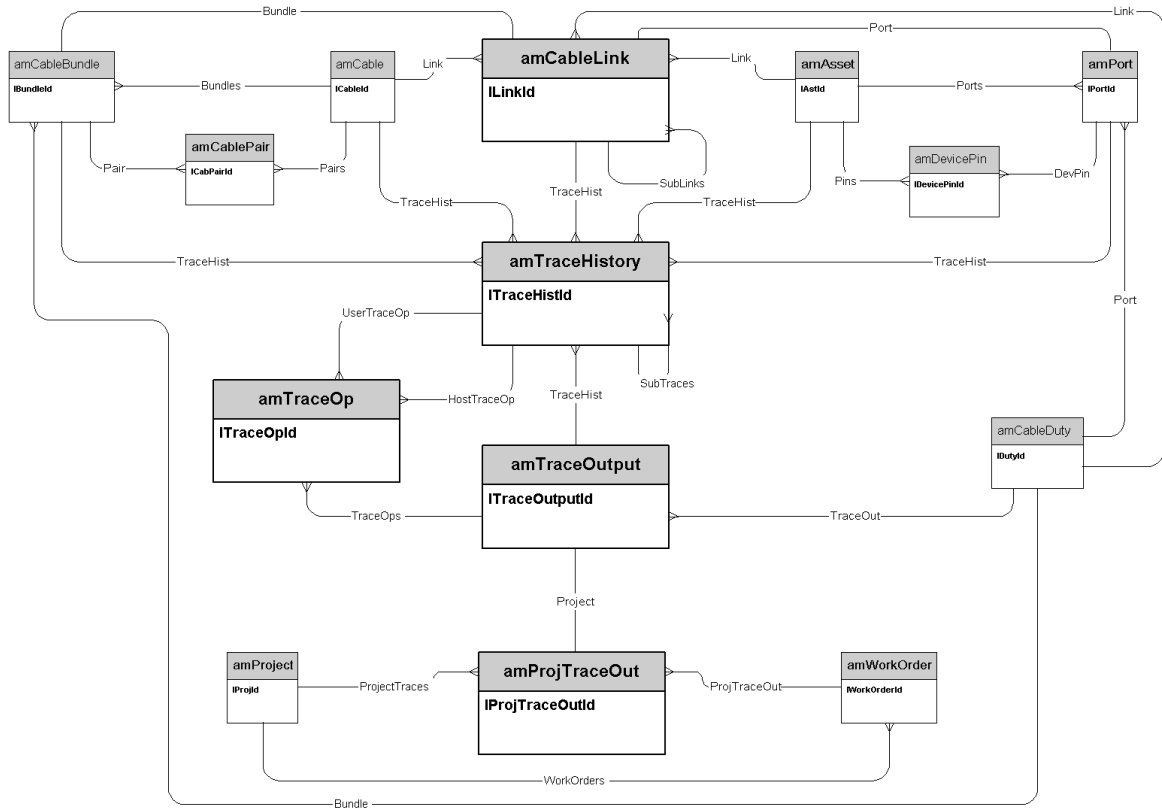
Topology groups



Termination-field configurations



Cable links

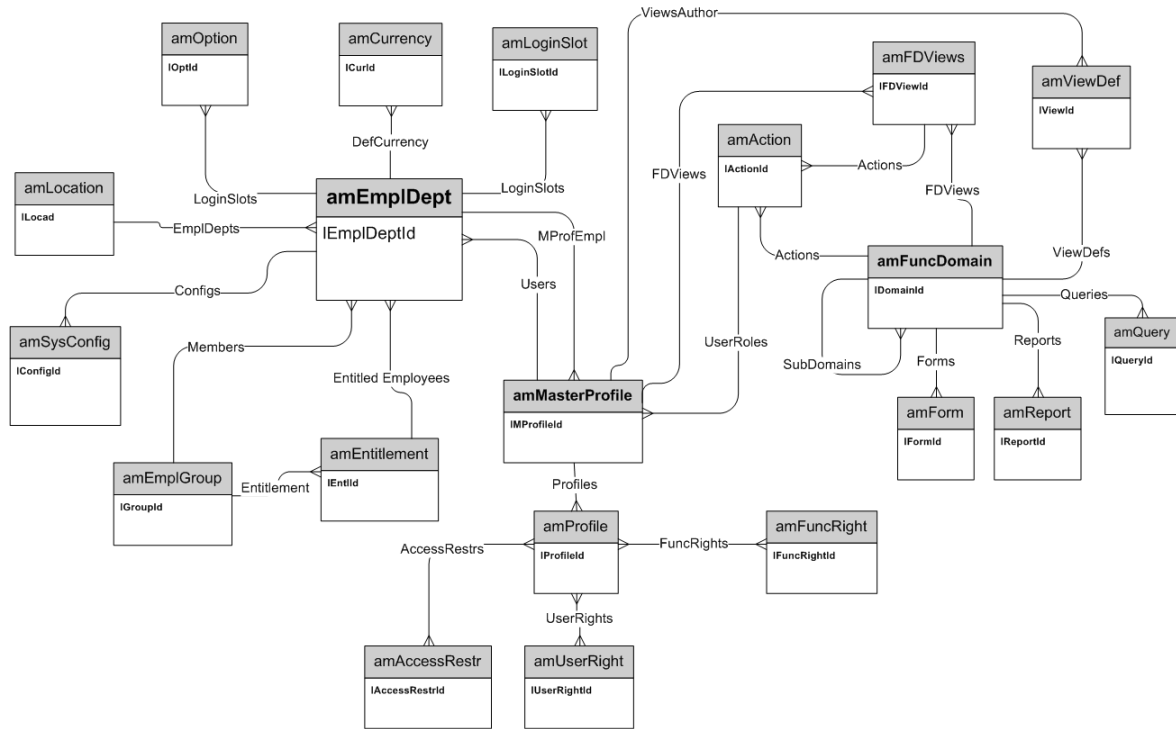


Chapter 8: Administration

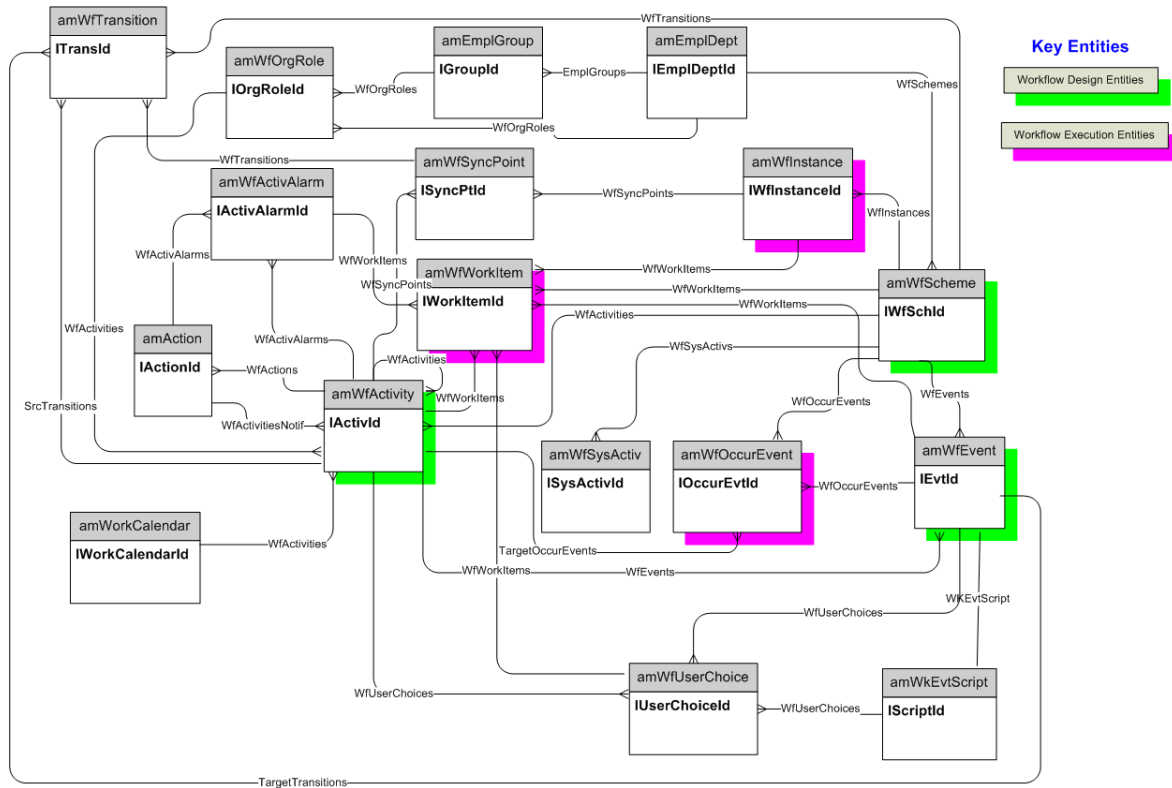
This chapter presents the diagram of the following physical data models:

Access to the database	49
Workflows	50
Data health check	51

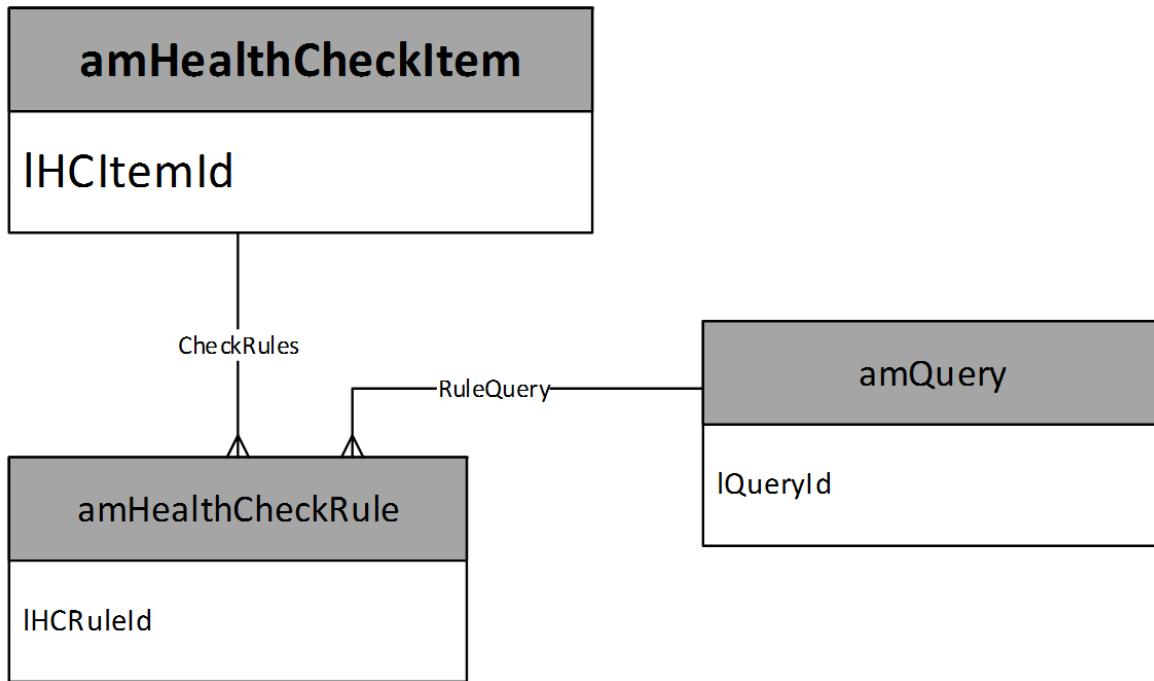
Access to the database



Workflows



Data health check

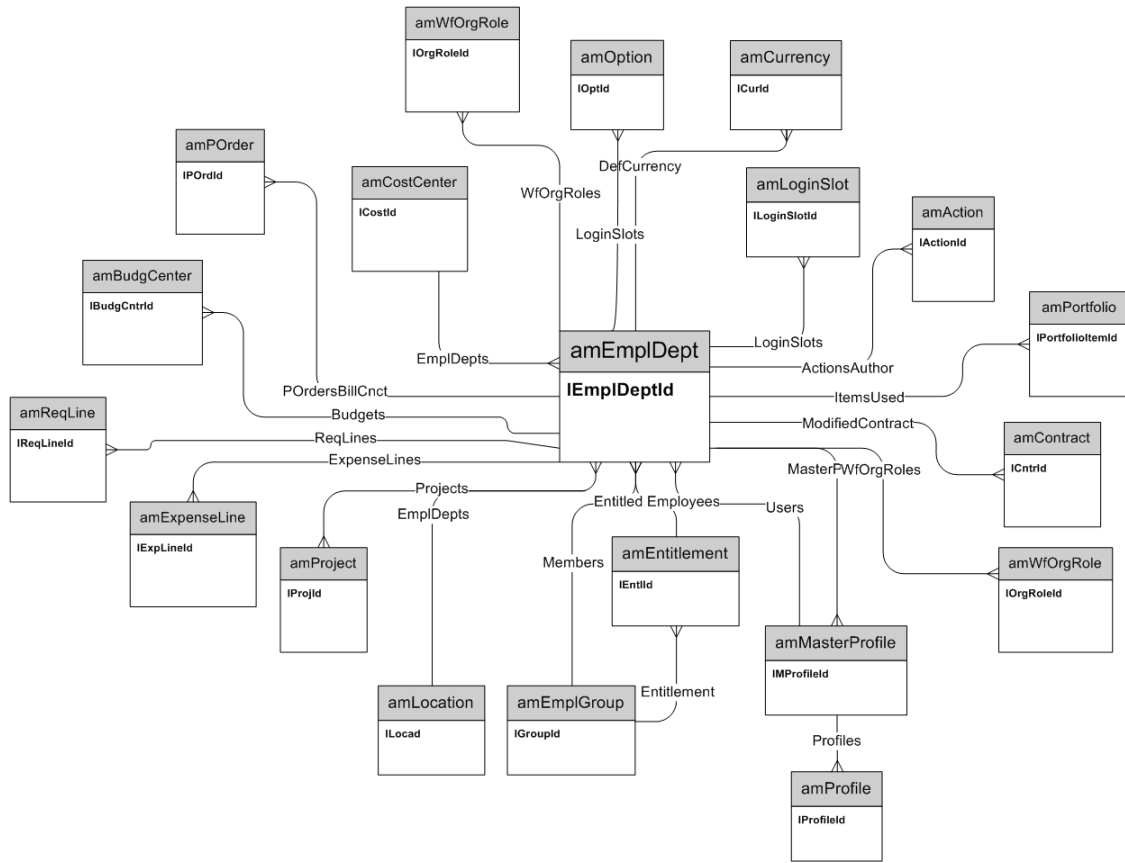


Chapter 9: Organization

This chapter presents the diagram of the following physical data model:

Employees and Departments	53
---------------------------------	----

Employees and Departments

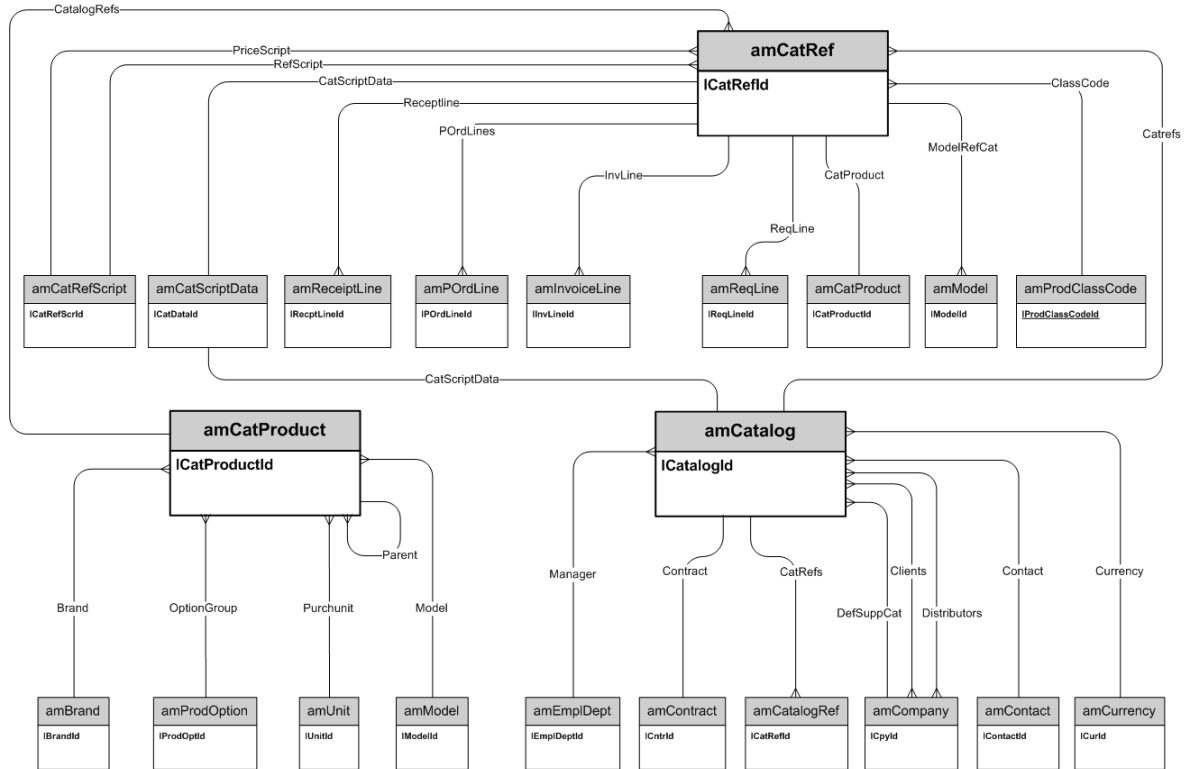


Chapter 10: Catalog

This chapter presents the diagram of the following physical data model:

Catalog	55
---------------	----

Catalog

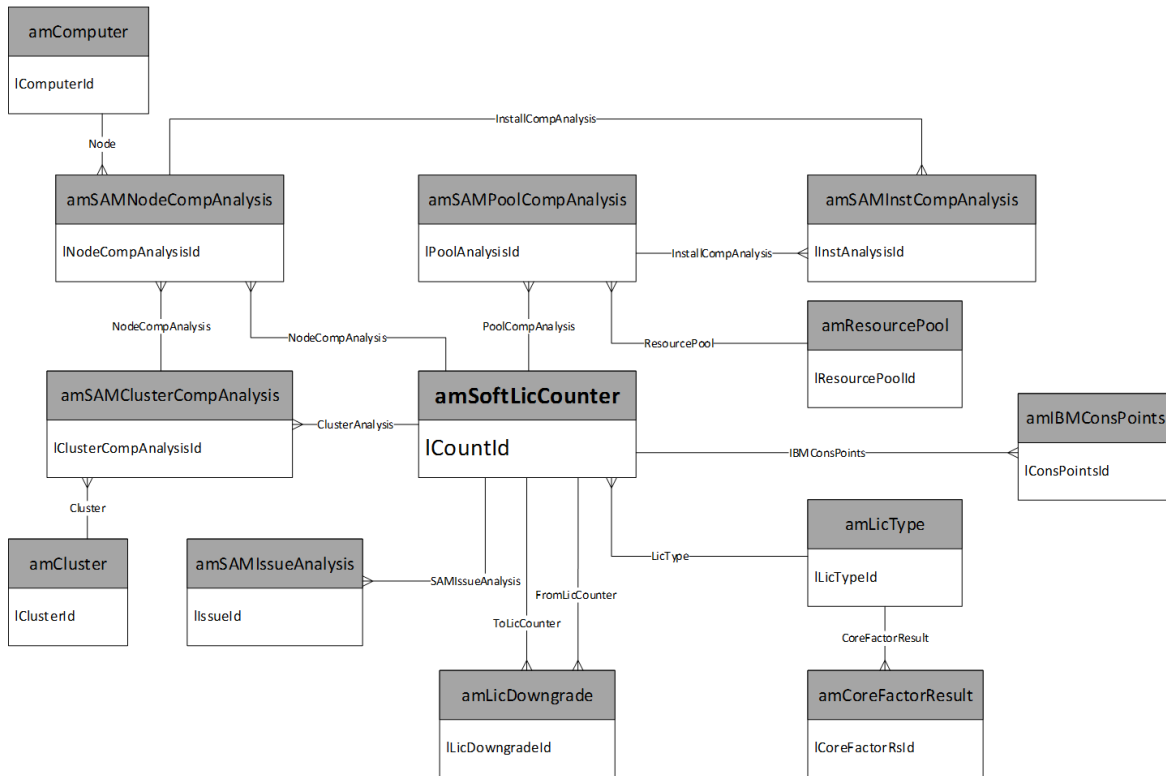


SAM

This chapter presents the diagram of the following physical data model:

SAM56

SAM



Send documentation feedback

If you have comments about this document, you can [contact the documentation team](#) by email. If an email client is configured on this system, click the link above and an email window opens with the following information in the subject line:

Feedback on Physical Data Models (Asset Manager 9.62)

Just add your feedback to the email and click send.

If no email client is available, copy the information above to a new message in a web mail client, and send your feedback to ovdoc-ITSM@hpe.com.

We appreciate your feedback!