



Asset Manager

Software Version: 9.62

Windows® and Linux® operating systems

Cable and Circuit

Document Release Date: December 2016

Software Release Date: December 2016



Hewlett Packard
Enterprise

Legal Notices

Warranty

The only warranties for Hewlett Packard Enterprise products and services are set forth in the express warranty statements accompanying such products and services. Nothing herein should be construed as constituting an additional warranty. Hewlett Packard Enterprise shall not be liable for technical or editorial errors or omissions contained herein.

The information contained herein is subject to change without notice.

Restricted Rights Legend

Confidential computer software. Valid license from Hewlett Packard Enterprise required for possession, use or copying. Consistent with FAR 12.211 and 12.212, Commercial Computer Software, Computer Software Documentation, and Technical Data for Commercial Items are licensed to the U.S. Government under vendor's standard commercial license.

Copyright Notice

© 1994 - 2016 Hewlett Packard Enterprise Development LP

Trademark Notices

Adobe™ is a trademark of Adobe Systems Incorporated.

Microsoft® and Windows® are U.S. registered trademarks of Microsoft Corporation.

UNIX® is a registered trademark of The Open Group.

This product includes an interface of the 'zlib' general purpose compression library, which is Copyright © 1995-2002 Jean-loup Gailly and Mark Adler.

Documentation Updates

To check for recent updates or to verify that you are using the most recent edition of a document, go to: <https://softwaresupport.hpe.com/>.

This site requires that you register for an HP Passport and to sign in. To register for an HP Passport ID, click **Register** on the HPE Software Support site or click **Create an Account** on the HP Passport login page.

You will also receive updated or new editions if you subscribe to the appropriate product support service. Contact your HPE sales representative for details.

Support

Visit the HPE Software Support site at: <https://softwaresupport.hpe.com/>.

Most of the support areas require that you register as an HP Passport user and to sign in. Many also require a support contract. To register for an HP Passport ID, click **Register** on the HPE Support site or click **Create an Account** on the HP Passport login page.

To find more information about access levels, go to: <https://softwaresupport.hpe.com/web/softwaresupport/access-levels>.

HPE Software Solutions Now accesses the HPSW Solution and Integration Portal website. This site enables you to explore HPE Product Solutions to meet your business needs, includes a full list of Integrations between HPE Products, as well as a listing of ITIL Processes. The URL for this website is <https://softwaresupport.hpe.com/km/KM01702731>.

Contents

Chapter 1: Introduction	1
Who is the Cable and Circuit module intended for?	1
What does the Cable and Circuit module do?	1
Chapter 2: Overview	3
Areas covered by the Cable and Circuit module	3
Principal concepts	4
Chapter 3: Presentation of the practical case	6
Chapter 4: Implementing cable management (Cable and Circuit)	9
Preliminary steps	9
Cable-device types	11
Creating cable device types	12
Creating the cable device types for the practical case	12
Cable types	12
Creating cable types	13
Creating the cable types for the practical case	13
Cable roles	13
Creating cable roles	14
Creating the cable roles for the practical case	14
Colors to use for the color codes	14
Creating colors	15
Creating the colors for the practical case	15
Color codes	17
Creating color codes	18
Creating the color codes for the practical case	19
Label rules	21
Creating label rules	22
Creating the label rules for the practical case	24
Types of pairs and conductors	26
Creating pair/conductor types	27
Creating the pair/conductor types for the practical case	27

Connection types	28
Creating connection types	28
Creating the connection types for the practical case	29
Cable duties	30
Creating cable duties manually	31
Creating the cable duties manually for the practical case	32
Locations	32
Creating the locations for the practical case	32
Projects and work orders associated with cabling	33
Creating projects and work orders associated to the Cable and Circuit module	34
Creating the projects and work orders for the practical case	35
Natures for cables and cable devices	37
Creating the natures of cables and cable devices	38
Creating the natures of cables and cable devices for the practical case ..	39
Brands of cable and cable device models	40
Creating the brands of the cable and cable device models	40
Creating the brands of the cable and cable device models for the practical case	40
Cable models	41
Creating cable models	41
Create pairs wizard	43
Creating the cable models for the practical case	44
Creating the models	44
Creating the pairs/conductors for each cable model	45
Cable device models without slots	45
Creating the models of cable devices without slots	46
Connection by ports or by pins	47
Create ports wizard	47
Creating the models of cable devices without slots for the practical case	49
Creating the models	49
Creating the ports for each device model for which the network connection is established by ports	50
Slot types	51
Creating slot types	52

Creating the slot types for the practical case	52
Cable device models with slots	52
Creating the models of cable devices with slots	53
Create slots wizard	55
Creating the models of cable devices with slots for the practical case	56
Topologies	57
Creating topologies	58
Creating the topologies for the practical case	60
Topology groups	63
Creating topology groups	65
Creating the topology groups for the practical case	66
Termination-field configurations	67
Creating termination-field configurations	70
Creating the termination-field configurations for the practical case	72
Chapter 5: Termination fields	75
Create a termination field wizard	76
Use the Create a termination field wizard for the practical case	81
Expand termination field wizard	83
Using the Expand termination field wizard in the practical case	87
Duplicate wiring closet wizard	88
Use the Duplicate wiring closet wizard for the practical case.	93
Chapter 6: Cable devices, cables and connections - manual creation .95	
Cable devices - manual creation	96
Creating cable devices manually	99
Creating the cable devices manually for the practical case	103
Cables - manual creation	105
Creating cables manually	105
Creating the cables manually for the practical case	106
Connections - manual creation	107
Simplified data model	108
Relationship between the cable links, device ports and cable bundles	108
Tables used in the complete description of the connections	110
Creating connections manually	111
Creating the connections manually for the practical case	114

Chapter 7: Connections - creation with the wizards	118
Run riser cables wizard	118
Use the Run riser cables wizard	119
Use the Run riser cables wizard for the practical case	130
Run lateral cables wizard	133
Use the Run lateral cables wizard	133
Use the Run lateral cables wizard for the practical case.	141
Cross connect bundles wizard	142
Use the Cross connect bundles wizard	143
Use the Cross connect bundles wizard for the practical case.	150
Chapter 8: Viewing the traces	152
Cable cross-connections wizard	152
Use the Cable cross-connections wizard	153
Device cross-connections wizard	154
Use the Device cross-connections wizard.	155
Display device traces wizard	156
Use the Display device traces wizard.	156
Display cable traces wizard	157
Use the Display cable traces wizard.	158
Chapter 9: Glossary (Cable and Circuit)	160
Asset Manager key terms (Cable and Circuit)	162
Pin/ Terminal	163
Cable	163
Trace	164
Color code	164
Column	166
Trace output	166
Termination-field configuration	166
Cable device	166
Slot	167
Color code entry	168
Topology step	169
Label	169
Bundle	170

Duty	170
Topology group	171
Host	171
Cross connection	172
Cable link	172
Line	172
Ring	172
Pair/conductor	172
Tip	173
Port	173
Label rule	173
Termination field	174
Role	175
Sequence	175
Terminal	176
Topology	176
Cable type	176
Connection type	176
Cable device type	177
Pair/Conductor type	178
Slot type	178
User	178
Key terms of the profession (Cable and Circuit)	179
Adapter	179
Rack	180
Punchdown block	181
Chassis	182
Cabling path	182
Converter	182
Vertical distribution	182
Lateral distribution	183
Hub	184
Jumper/ Patch cord	185
Length	185
Patch panel	185

Wall outlet	186
Main termination field	186
Repeater	186
Riser	186
Router	187
Wallfield	187
Switch	187
Run (a cable)	188
Run	188
Send documentation feedback	189

Chapter 1: Introduction

Caution: The Cable and Circuit module relies on the technical knowledge of the following domains:

- Organization of cabling systems
- Cabling techniques
- Cabling material
- Cabling standards

This guide does not explain the technical knowledge related to the domains mentioned above; it is assumed that you are already familiar with it.

Who is the Cable and Circuit module intended for?

The Cable and Circuit module is mainly intended for organizations with a complex networking system (LAN, WAN, telephony, video, and so on).

In general, it is used by the following people:

- Network administrators
- Maintenance technicians

What does the Cable and Circuit module do?

The Cable and Circuit module enables you to perform the following tasks:

- Conduct a physical and detailed inventory of your cables and cable devices:
 - Technical description
 - Geographic location

- Locate your cables and cable devices:
 - Labeling system
 - Description of links between cable devices and cables.
 - Verify the continuity of the cables' paths (from the user to the server or to the PABX).
 - Create projects and work orders to manage the placement or removal of cables and cable devices.

Managing these tasks enables you to:

- Locate each cable and cable device.
- Easily intervene in case of a problem at level of the faulty cable or cable device.
- Create, modify or cancel connections.
- Homogenize the mode of connection between cables and cable devices.
- Define cabling standards all the way to the conductors and connector pins.

Chapter 2: Overview

Managing a cable network is extremely complex: There is a large number of cables and cable devices involved in a network. You need to be able to locate these cables and cable devices with precision and simplicity.

Asset Manager offers this possibility and enables you to manage large quantities of information that would otherwise be difficult to store on paper or in an generic database.

This section contains the following:

Areas covered by the Cable and Circuit module	3
Principal concepts	4

Areas covered by the Cable and Circuit module

This section covers certain aspects of managing a cable network and explains how the network is represented in Asset Manager. Some principal terms are also defined in this section.

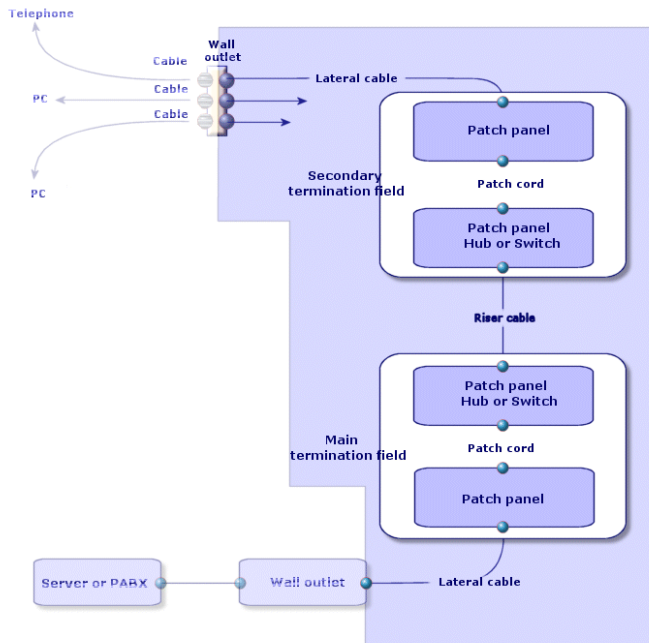
The Cable and Circuit module concerns the "hidden" part of the cable network, from the wall outlet to the termination fields.

Examples:

- The invisible side of the wall outlet is also taken into consideration. The visible side of the outlet and its connection to computers, peripheral devices and telephones is not taken into consideration here.
- The termination-field devices, the riser and the lateral cables are also included here. The servers, the PABX and the connection to them are not concerned by the module.

The following illustration shows you the part of a network covered by the Cable and Circuit module.

Cable and Circuit module - area of coverage



Principal concepts

This section explains the key terms used in the Cable module.

For definitions of these terms: [Glossary \(Cable and Circuit\)](#)

Cables: pairs, conductors, bundles

[Pair/conductor](#)

[Bundle](#)

Cable devices: pins, terminals, ports

[Pin/ Terminal](#)

[Port](#)

The connection between cable devices and cables: connection types

[Connection type](#)

The cable devices and cables are connected in the following ways:

- From device pin to device pin.
- From device pin to cable conductor or wire.

- From device port to device port.
- From device port to cable bundle.

Thus, Asset Manager distinguishes between two types of connections:

- By pin: Each pin is identified.
- By port: Pins are not longer identified individually.

Connections: cable links, user and host directions

[Cable link](#)

[Host](#)

[User](#)

Note: The patch cords used to cross connect the termination-field devices are not described in the database. Only the cable links between the ports and these devices are described.

Locating wires and pins: color codes

[Color code](#)

Chapter 3: Presentation of the practical case

In order to facilitate your learning experience, we will develop a practical case throughout the course of this guide.

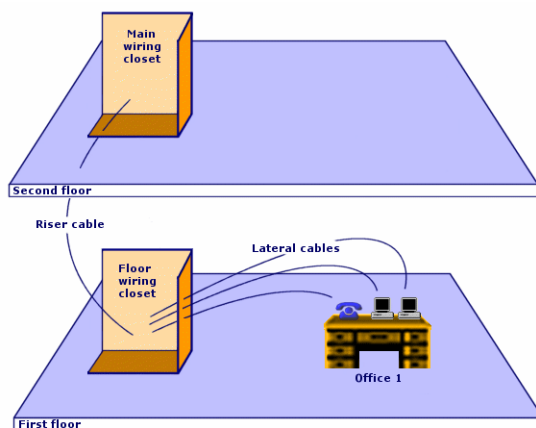
This will help you better understand what the Cable and Circuit module represents and how it represents it.

Caution: For an example to work, you must perform each step in its entirety and respect the order in which these steps are presented. Only the fields and links that are absolutely necessary to perform most procedures are referred to in this guide. Feel free to explore the utility of the other fields and links on your own.

Locations of the practical case

The network that we are going to represent is divided up in the locations illustrated by the following diagram:

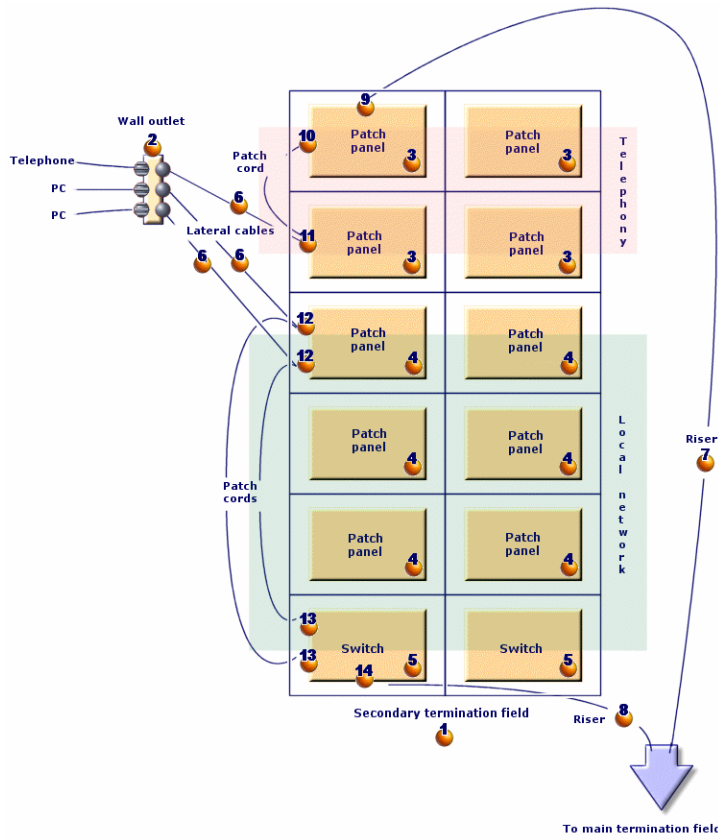
Practical case - locations to use



Network of the practical case

The following diagram illustrates which portion of the network we will use in the Asset Manager database for our practical case.

Practical case - network to use



This network contains components that will not be used in the example illustrating the Cable and Circuit module:

- 1 telephone connected to the wall outlet by 1 telephone cable.
- 1 stationary computer connected to the wall outlet by 1 LAN cable.
- 1 portable computer connected to the wall outlet by 1 LAN cable.

Then there are the components that will be used:

Practical case - list of components to use

Location on the diagram	Quantity	Component	Composition	Connection type
1	1	Termination field	2 columns and 6 rows	Does not apply.
2	1	Wall outlet	3 ports with 8 pins	By pin
3	4	Patch panels	Back side: 24 ports with 8 preloaded pins	By port
			Front side: 24 RJ45 ports	By port

Practical case - list of components to use, continued

Location on the diagram	Quantity	Component	Composition	Connection type
				(patch)
4	6	Patch panels	Back side: 256 pins (32 x 8)	By pin
			Back side: 24 RJ45 ports	By port (patch)
5	2	Switch	10 slots	Does not apply.
	1	Module (for one of the switch slots)	8 RJ45 ports	By port
6	3	Lateral cables	4 twisted pairs with 2 copper wires	Does not apply.
7	1	Riser cable	32 twisted pairs with 2 copper wires	Does not apply.
8	1	Riser cable	4 twisted pairs with 2 copper wires	Does not apply.
9	1	Port	2 pins (back side)	By pin
10	1	Port	8 pins (front side)	By port
11	1	Port	8 pins (front side)	By port
			8 pins (back side)	By pin
12	2	Ports	8 pins (2 sides)	By port
13	2	Ports	8 pins (front side)	By port
14	1	Port	8 pins (back side)	By port

Chapter 4: Implementing cable management (Cable and Circuit)

Before implementing the Cable and Circuit module, you need to perform certain preliminary steps, which are described in this chapter.

You must then define the reference information that will be used to create and define your cables, cable devices and cable links. This reference information must be created first: You can create it all right away, or do so as you go.

Preliminary steps

To continue reading this guide

Before continuing to read this guide, you must first:

1. Install Asset Manager.
2. Execute Asset Manager.
3. Connect to Asset Manager's demonstration database.
4. Activate the Cable and Circuit module using the **File/ Manage modules...** menu item.

Note: The **Cable and Circuit** module is not available via the Web client. If you wish to use this module you should do so through the Windows client.

Working with your own database using the Cable and Circuit module

In order to work with your own database, you must:

1. Install Asset Manager.
2. Activate the database using a set of HP AutoPass License Keys that include authorization for the Cable and Circuit module.
Asset Manager **Administration** guide, chapter **Installing License Keys**.
3. Execute Asset Manager Application Designer.
4. Create your database by importing the Cable and Circuit **line-of-business data** (Procedure detailed below).

5. Execute Asset Manager.
6. Connect to your database.
7. Activate the Cable and Circuit module using the **File/ Manage modules...** menu item.

Importing the Line-of-business data when you create the database

Proceed in the following manner:

1. Execute Asset Manager Application Designer.
2. Select the **File/ Open...** menu item.
3. Select the **Open database description file - create new database** option.
4. Select the **gbbase.xml** file, located in the **config** sub-folder of the Asset Manager installation folder.
5. Start the database creation wizard (**Action/ Create database** menu).
6. Follow the instructions in the **Administration** guide, chapter **Creating, modifying and deleting an Asset Manager database**.

In the page **Data to import**, select **Cable and Circuit - Line-of-business data**.

Importing the Line-of-business data into an existing database

Proceed in the following manner:

1. Execute Asset Manager Application Designer.
2. Select the **File/ Open** menu item.
3. Select the **Open database description file - create new database** option.
4. Select the **gbbase.xml** file, located in the **config** sub-folder of the Asset Manager installation folder.
5. Start the database creation wizard (**Action/ Create database** menu).
6. Populate the pages of the wizard as follows (navigate through the wizard pages using the **Next** and **Previous** buttons):

Generate SQL script / Create database page:

Fields	Value
Database	Select the connection to the database into which you wish to import the reports.
Creation	Import line-of-business data.

Generate SQL script / Create database page:, continued

Fields	Value
Use advanced creation options	Do not select this option

Creation parameters page:

Fields	Value
Password	<p>Enter the administrator's password.</p> <p>Note</p> <p>The Asset Manager database administrator is the record in the Employees and departments (amEmplDept) table for which the Name (Name) field is set to Admin.</p> <p>The database connection login is stored in the User name (UserLogin) field. The administration name is Admin.</p> <p>The password is stored in the Password field (LoginPassword).</p>

Data to import page:

Fields	Value
Available data	Select the option Cable and Circuit - Line-of-business data .
Stop import if error	Select this option for the import to stop if a problem is encountered.
Log file	Full name of the file to which all import operations, including errors and warnings, are logged.

- Execute the options defined using the wizard (**Finish** button).

To learn more about installing Asset Manager

Refer to the **Installation and upgrade** guide.

Cable-device types

Creating cable device types	12
Creating the cable device types for the practical case	12

Definitions

[Cable device type](#)

Table names

The types of cable devices are stored in the **amDeviceType** itemized list in the **Itemized lists** table (**amItemizedList**).

Access menu

Administration/ System/ Itemized lists

Creating cable device types

1. Display the list of itemized lists (**Administration/ System/ Itemized lists**).
2. Select the **amDeviceType** itemized list.
3. Create the values that you need.

Prerequisites

No prerequisites.

The **amDeviceType** itemized list already exists in the **Itemized lists** table.

Creating the cable device types for the practical case

1. Display the list of itemized lists (**Administration/ System/ Itemized lists**).
2. Select the **amDeviceType** itemized list.
3. Create the following values if they don't already exist:
 - o **Switch module**
 - o **Patch panel**
 - o **Wall outlet**
 - o **Switch**

Cable types

Creating cable types	13
Creating the cable types for the practical case	13

Definitions

Cable type

Table names

The types of cables are stored in the **amCableType** itemized list in the **Itemized lists** table (**amItemizedList**).

Access menu

Administration/ System/ Itemized lists

Creating cable types

1. Display the list of itemized lists (**Administration/ System/ Itemized lists**).
2. Select the **amCableType** itemized list.
3. Create the values that you need.

Prerequisites

No prerequisites.

The **amCableType** itemized list already exists in the **Itemized lists** table.

Creating the cable types for the practical case

1. Display the list of itemized lists (**Administration/ System/ Itemized lists**).
2. Select the **amCableType** itemized list.
3. Create the following values if they don't already exist:
 - o **Twisted pairs**

Cable roles

Creating cable roles	14
Creating the cable roles for the practical case	14

Definitions

Role

Table names

The cable roles are stored in the **amCableRole** itemized list in the **Itemized lists** table (**amItemizedList**).

Access menu

Administration/ System/ Itemized lists

Creating cable roles

1. Display the list of itemized lists (**Administration/ System/ Itemized lists**).
2. Select the **amCableRole** itemized list.
3. Create the values that you need.

Prerequisites

No prerequisites.

The **amCableRole** itemized list already exists in the **Itemized lists** table.

Creating the cable roles for the practical case

1. Display the list of itemized lists (**Administration/ System/ Itemized lists**).
2. Select the **amCableRole** itemized list.
3. Create the following values if they don't already exist:
 - o **Riser**
 - o **Lateral**

Colors to use for the color codes

Creating colors	15
Creating the colors for the practical case	15

Table names

The colors are stored in the **Itemized lists** table (**amItemizedList**):

- **amColor**
- **amTipColor**
- **amRingColor**

Access menu

Administration/ System/ Itemized lists

The **amColor**, **amTipColor** and **amRingColor** itemized lists already exist in the **Itemized lists** table.

Creating colors

1. Display the list of itemized lists (**Administration/ System/ Itemized lists**).
2. Select the **amColor** itemized list.
3. Create the values that you need.
4. Select the **amTipColor** itemized list.
5. Create the values that you need.
6. Select the **amRingColor** itemized list.
7. Create the values that you need.

Tip: You can begin by creating the colors in the **amColor** itemized list, then copy them into the **amTipColor** and **amRingColor** itemized lists.

Prerequisites

No prerequisites.

Creating the colors for the practical case

We are going to create the colors that we need for the color code entries for our practical case.

First, we will create them in the **amColor** itemized list, and then we will copy them into the **amTipColor** and **amRingColor** itemized lists.

Creating the colors in the **amColor** itemized list

1. Display the list of itemized lists (**Administration/ System/ Itemized lists**).
2. Select the **amColor** itemized list.
3. Add the following values to the itemized list:
 - **white/blue**
 - **white/brown**
 - **white/orange**
 - **white/green**
 - **blue**
 - **blue/white**
 - **blue/yellow**
 - **blue/black**
 - **blue/red**
 - **blue/violet**
 - **yellow/blue**
 - **yellow/brown**
 - **yellow/green**
 - **brown**
 - **brown/white**
 - **brown/yellow**
 - **brown/black**
 - **brown/red**
 - **brown/violet**
 - **black/blue**
 - **black/brown**
 - **black/orange**
 - **black/green**
 - **orange**
 - **orange/black**
 - **red/blue**
 - **red/brown**

- **red/green**
- **green**
- **green/white**
- **green/yellow**
- **green/black**
- **green/red**
- **green/violet**
- **violet/blue**
- **violet/brown**
- **violet/green**

Creating the colors in the amTipColor and amRingColor itemized lists

Follow the same steps you used for the **amColor** itemized list (by creating the same colors).

Color codes

Definition

[Color code](#)

[Color code entry](#)

[Ring](#)

[Tip](#)

Table names

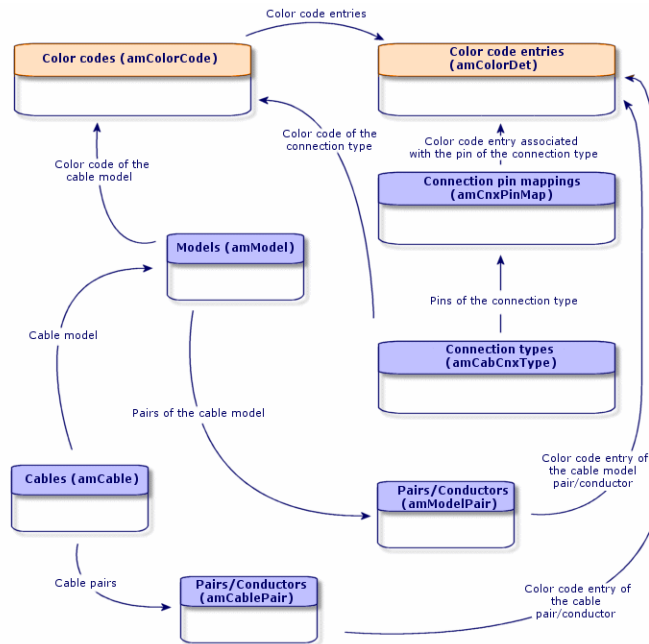
- **Color codes (amColorCode)**
- **Color code entries (amColorDet)**

Access menu

Portfolio management/ Cable/ Color codes

Simplified data model

Color codes - data model



Creating color codes

1. Display the list of color codes (**Portfolio management/ Cable/ Color codes**).
2. For each color code to create:
 - a. Create a record in the **Color codes** table.
 - b. Add a color code entry by pair or by conductor.

Prerequisites

We recommend that you first create the colors in the following itemized lists of the **Itemized lists** table (**amItemizedList**):

- **amColor**
- **amTipColor**
- **amRingColor**

If you have not already done this, you can add the colors on the fly while you create the color codes.

Fields and links that must absolutely be populated

Color codes - Fields and links that must absolutely be populated

Label of the field or link	SQL name of the field or link
Color codes table (amColorCode)	
Name	Name
Color code entries	ColorDetail
Color code entries table (amColorDet)	
#	sSequenceNumber
Color	Color

Creating the color codes for the practical case

We are going to create 2 color codes and their entries.

Creating the color codes

1. Display the list of color codes (**Portfolio management/ Cable/ Color codes**).
2. Create a new record for each color code in the **Color codes** table (**amColorCode**) and populate the following fields:

Value of the field or link ...	Record 1	Record 2
Name (Name)	568B - 4 pairs	568B - 32 pairs

Creating the entries of color code 568B - 4 pairs

1. Select the color code **568B - 4 pairs**.
2. Create the following color codes:

Value of the # field (sSequenceNumber)	Value of the Color field (Color)	Value of the Tip color field (TipColor)	Value of the Ring color field (RingColor)
1	blue	white/blue	blue
2	orange	white/orange	orange
3	green	white/green	green

Value of the # field (sSequenceNumber)	Value of the Color field (Color)	Value of the Tip color field (TipColor)	Value of the Ring color field (RingColor)
4	brown	white/brown	brown

Creating the entries of color code 568B - 32 pairs

1. Select the color code **568B - 32 pairs**.
2. Select the color code and create the following color code entries:

Value of the # field (sSequenceNumber)	Value of the Color field (Color)	Value of the Tip color field (TipColor)	Value of the Ring color field (RingColor)
1	white/blue	white/blue	blue/white
2	white/brown	white/brown	brown/white
3	white/green	white/green	green/white
4	blue/yellow	blue/yellow	yellow/blue
5	blue/black	blue/black	black/blue
6	blue/red	blue/red	red/black
7	blue/violet	blue/violet	violet/blue
8	yellow/brown	yellow/brown	brown/yellow
9	yellow/green	yellow/green	green/yellow
10	brown/black	brown/black	black/brown
11	brown/red	brown/red	red/brown
12	brown/violet	brown/violet	violet/brown
13	black/orange	black/orange	orange/black
14	black/green	black/green	green/black
15	red/green	red/green	green/red
16	green/violet	green/violet	violet/green
17	white/blue	white/blue	blue/white
18	white/brown	white/brown	brown/white

Value of the # field (sSequenceNumber)	Value of the Color field (Color)	Value of the Tip color field (TipColor)	Value of the Ring color field (RingColor)
19	white/green	white/green	green/white
20	blue/yellow	blue/yellow	yellow/blue
21	blue/black	blue/black	black/blue
22	blue/red	blue/red	red/black
23	blue/violet	blue/violet	violet/blue
24	yellow/brown	yellow/brown	brown/yellow
25	yellow/green	yellow/green	green/yellow
26	brown/black	brown/black	black/brown
27	brown/red	brown/red	red/brown
28	brown/violet	brown/violet	violet/brown
29	black/orange	black/orange	orange/black
30	black/green	black/green	green/black
31	red/green	red/green	green/red
32	green/violet	green/violet	violet/green

Label rules

Definitions

[Label rule](#)

[Label](#)

Table names

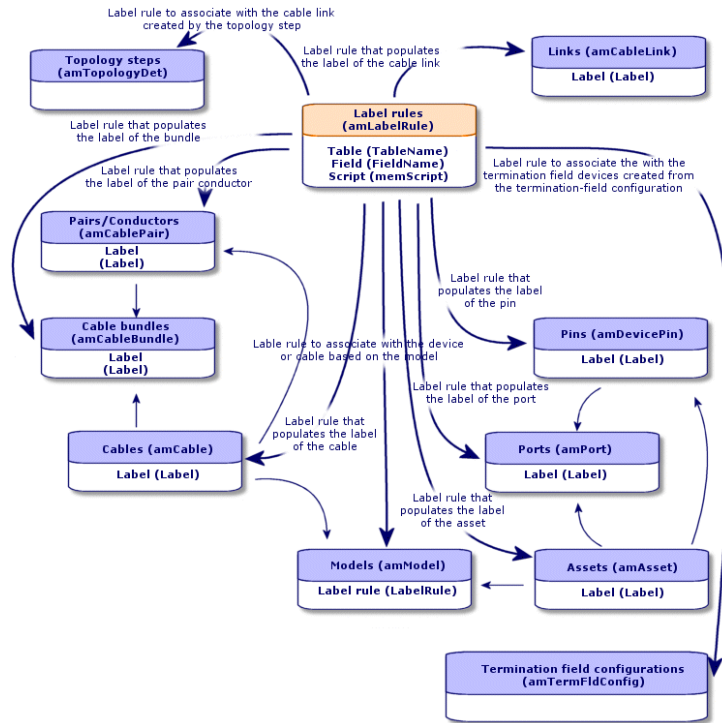
Label rules (amLabelRule)

Access menu

Portfolio management/ Cable/ Label rules

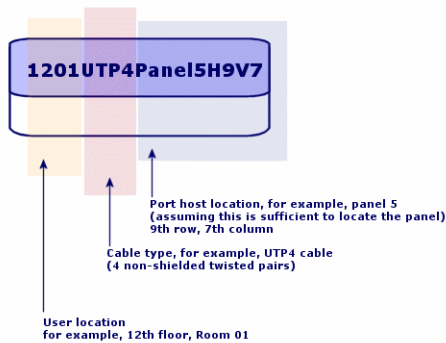
Simplified data model

Labels and label rules - data model



Label example

Cable label - example



Creating label rules

Caution: In order for the wizards to function, you must create label rules to identify the following components:

- Cable devices
- Termination-field devices

- Cables
- Links

Tip: There are several ways to create cable-link labels according to, for example:

- The connection can be made by port or by pin.
- You can use either the starting and ending numbers in a sequence of pins or you can use all the numbers in the sequence.
- The link can reference a cable or a cable device.

You can create label rules for the following components:

- Bundles
- Pins/ terminals
- Ports
- Pairs/conductors

To create label rules:

1. Display the list of label rules (**Portfolio management/ Cable/ Label rules**).
2. Create the records from the list.

Prerequisites

Determine with precision which information you want to use to create labels.

Fields and links that must absolutely be populated

Label rules - Fields and links that must absolutely be populated

Label of the field or link	SQL name of the field or link
Field	FieldName
Name	Name
SQL name	SQLName
Script	memScript
Table	TableName

Creating the label rules for the practical case

We are going to create the label rules we need to use in the practical case to:

- Recognize the cables according to their model and their code.
- Name the links.
- Populate the labels and cable devices.

To do this:

1. Display the list of label rules (**Portfolio management/ Cable/ Label rules**).
2. Create a new record for each label rule in the **Label rules** table (**amLabelRule**) and populate the following fields:

Field	Record 1	Record 2	Record 3	Record 4	Record 5
Name	Practical case - Cables	Practical case - Link - Sequentially, by pairs	Practical case - Wallfield assets	Practical case - Wall outlet link	Practical case - Port of a termination-field patch panel link
Table	Cables (amCable)	Links (amCableLink)	Assets (amAsset)	Links (amCableLink)	Links (amCableLink)
Field	Label	Label	Label	Label	Label
Script	See below.	See below.	See below.	See below.	See below.

Tip: To avoid typing the following scripts by hand, you can copy and paste them from the online help to Asset Manager.

To avoid typing the following scripts by hand, you can copy and paste them from the online help to Asset Manager.

The values of the **Script** field are:

- Record 1:

```
RetVal = [Model.Name] + " - " + [Code]
```


- Record 2:

```

Dim lErr      As Long
Dim hqPair    As Long
Dim strResult As String
Dim strVal    As String
hqPair = AmQueryCreate()
lErr = AmQueryExec(hqPair, "SELECT Name FROM amCablePair WHERE lBundleId = " &
[lBundleId] & " ORDER BY sSequenceNumber")
Do While ( lErr = 0 )
    strVal = AmGetFieldStrValue(hqPair, 0)
    If ( strResult = "" ) Then
        strResult = strVal
    Else
        strResult = strResult & " " & strVal
    End If
    lErr = AmQueryNext(hqPair)
Loop
AmReleaseHandle(hqPair)
RetVal = [Cable.Model.Name] & " (" & [Cable.Label] & ") - (" & strResult & ")"

```

- Record 3:

```

Dim lErr      As Long
Dim hqTFDev   As Long
Dim strTFName As String
Dim lCol      As Long
Dim lRow      As Long
hqTFDev = AmQueryCreate()
lErr = AmQueryExec(hqTFDev, "SELECT DeviceTermFieldDev.TerminationField.Name,
DeviceTermFieldDev.sHoriz, DeviceTermFieldDev.sVert FROM amAsset WHERE lAstId =
" & [lAstId])
If ( lErr = 0 ) Then
    strTFName = AmGetFieldStrValue(hqTFDev, 0)
    lCol      = AmGetFieldLongValue(hqTFDev, 1)
    lRow      = AmGetFieldLongValue(hqTFDev, 2)
End If
AmReleaseHandle(hqTFDev)
RetVal = FormatResString("$1 Co: $2 Li: $3", strTFName, lCol, lRow)

```

- Record 4:

```

RetVal = FormatResString("$1:$2", [Device.Label], [Port.PortNo])

```

- Record 5:

```

RetVal = FormatResString("$1 Port: $2", [Device.Label], [Port.PortNo])

```

When you select the label rule **Practical case - Cables** for a cable, the label will indicate:

- The cable's model.
- The cable's code.

It is presented in the form of:

<Name of the cable model> - <Code of the cable>

Example:

FTP - Category 5 - 4 twisted pairs - 000001

Types of pairs and conductors

Creating pair/conductor types	27
Creating the pair/conductor types for the practical case	27

Definitions

[Pair/Conductor type](#)

Table names

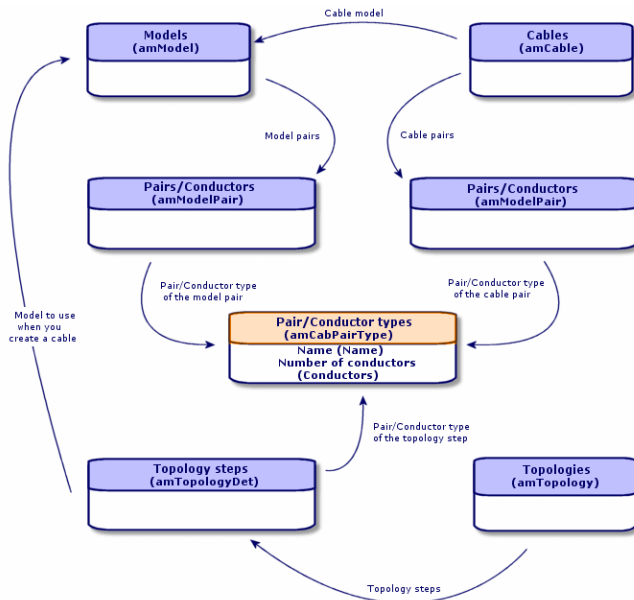
Pair/conductor types (amCabPairType)

Access menu

Portfolio management/ Cable/ Pair/conductor types

Simplified data model

Pair/conductor types - data model



Creating pair/conductor types

1. Display the list of pair/conductor types (**Portfolio management/ Cable/ Pair/conductor types**).
2. Create as many records as there are pair/conductor types that you use.

Prerequisites

None

Fields and links that must absolutely be populated

Pair/conductor types - Fields and links that must absolutely be populated

Label of the field or link	SQL name of the field or link
Name	Name
No. of conductors	sConductors

Creating the pair/conductor types for the practical case

We are going to create a pair type composed of 2 copper wires:

1. Display the list of pair/conductor types (**Portfolio management/ Cable/ Pair/conductor types**).
2. Create a new record in the **Pair/Conductor types** table (**amCabPairType**) and populate the following fields:

Field or link to populate	Value
Name (Name)	Copper
No. of conductors (sConductors)	2

Connection types

Creating connection types	28
Creating the connection types for the practical case	29

Definitions

[Connection type](#)

Table names

Connection types (amCabCnxType)

Connection pin mappings (amCnxPinMap)

Access menu

Portfolio management/ Cable/ Cable connection types

Creating connection types

1. Identify the connection types that you use in your network.
2. Display the list of connection types (**Portfolio management/ Cable/ Cable connection types**).
3. Create a record by identified connection type.
4. If you want to associate each of this connection-type's pins to a color code entry, then you have to populate the **Connection pin mappings** link. Create as many links as the connection type contains pins/terminals.

Prerequisites

You need to have already created the color codes.

Fields and links that must absolutely be populated**Connection types - Fields and links that must absolutely be populated**

Label of the field or link	SQL name of the field or link	Remarks
Cable connection types table (amCabCnxType)		
Name	Name	
Port-based or pin-based	seMode	
No. of pins/terminals	sPinCount	
Color code	ColorCode	
Connection pin mappings	CnxPinMaps	<ul style="list-style-type: none"> If the Port-based or pin-based field has Pin for its value, then this link must be populated. If the Port-based or pin-based field has Port for its value, then this field is optional.
Connection pin mappings table (amCnxPinMap)		
#	sPinSeq	
Color code entry	ColorCodeDet	

Creating the connection types for the practical case

We are going to create the following connection types:

- RJ45 - 568B - Port
- RJ45 - 568B - Pin

Creating the connection types

1. Display the list of connection types (**Portfolio management/ Cable/ Cable connection types**).
2. Create a new record in the **Cable connection types** table (**amCabCnxType**) and populate the following fields:

Field or link to populate	Value for record 1	Value for record 2
Name (Name)	RJ45 - 568B - Port	RJ45 - 568B - Pin

Field or link to populate	Value for record 1	Value for record 2
Port-based or pin-based (Name)	Port	Pin
No. of pins/terminals (sPinCount)	0	8
Color code (ColorCode)		568B - 4 pairs

Populate the Connection pin mappings link for the RJ45 - 568B - Pin connection type.

1. Select the **RJ45 - 568B - Pin** connection type.
2. Create the connection-pin mapping entries by populating the following fields:

Value of the # field (sPinSeq)	Color code entry (ColorCodeDet)
1	2 orange (white/orange, orange)
2	2 orange (white/orange, orange)
3	3 green (white/green, green)
4	1 blue (white/blue, blue)
5	1 blue (white/blue, blue)
6	3 green (white/green, green)
7	4 brown (white/brown, brown)
8	4 brown (white/brown, brown)

Cable duties

Creating cable duties manually	31
Creating the cable duties manually for the practical case	32

Definitions

Duty

Table names

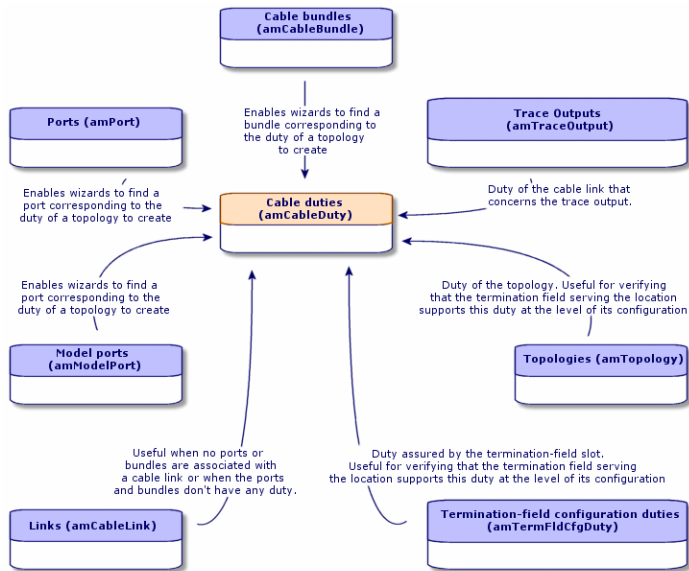
Cable duties (amCableDuty)

Access menu

Portfolio management/ Cable/ Cable duties

Simplified data model

Duties - data model



Creating cable duties manually

1. Display the list of cable duties (**Portfolio management/ Cable/ Cable duties**).
2. Create a record for each of the duties that your cable network fulfills.

Tip: At this stage, we advise against populating the **Topologies** link (**Topology**) since the topologies have not yet been created. It is better to associate a duty with the topologies after they have been created.

Prerequisites

No prerequisites.

Fields and links that must absolutely be populated

Cable duties - Fields and links that must absolutely be populated

Label of the field or link	SQL name of the field or link
Name	Name

Creating the cable duties manually for the practical case

We are going to create two duties.

1. Display the list of cable duties (**Portfolio management/ Cable/ Cable duties**).
2. Create a new record and populate the following fields:

Field or link to populate	Value for record 1	Value for record 2
Name (Name)	Data	Voice

Locations

Creating the locations for the practical case32

We are introducing the **Locations** table for the needs of our practical case.

Table names

Locations (amLocation)

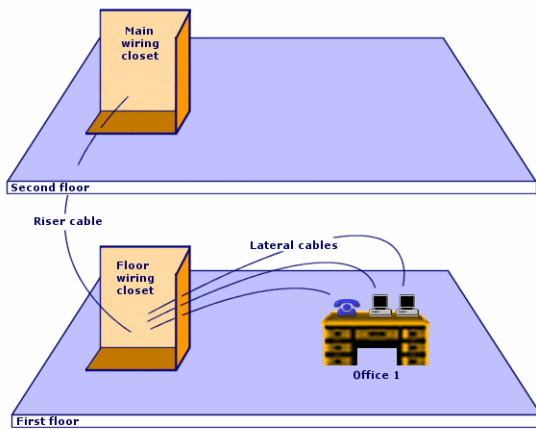
Access menu

Organization management/ Organization/ Locations

Creating the locations for the practical case

We are going to create the records that correspond to the locations represented by the following diagram:

Practical case - locations to use



1. Display the list of locations (**Organization management/ Organization/ Locations**).
2. Create a new record per location and populate the following fields:

Field or link to populate	Value for record 1	Value for record 2	Value for record 3
Name (Name)	Cabled building	1st floor	2nd floor
Sub-location of (Parent)	Do not populate.	Cabled building	Cabled building

Field or link to populate	Value for record 4	Value for record 5	Value for record 6
Name (Name)	Wiring closet for each floor	Main wiring closet	Office 1
Sub-location of (Parent)	Cabled building/1st floor	Cabled building/2nd floor	Cabled building/1st floor

Projects and work orders associated with cabling

Creating projects and work orders associated to the Cable and Circuit module 34

Creating the projects and work orders for the practical case 35

The projects and work orders enable you to conserve a trace of the operations carried out on the network:

- Running or removing cables.
- Connecting or disconnecting bundles and ports.
- Installing a cable device.

You need to create projects and work orders before launching the cabling wizards. Due to this constraint, you must create at least one project containing at least one work order.

The cabling wizards do not populate the following tables, unless you select a project and a work order at the end of the wizard's execution:

- **Trace outputs (amTraceOutput)**
- **Trace histories (amTraceHistory)**
- **Trace operations (amTraceOp)**

Table names

- **Projects (amProject)**
- **Work orders (amWorkOrder)**

Access menu

- **Organization management/ Organization/ Projects**
- **Asset lifecycle/ Work orders/ Work orders**

Creating projects and work orders associated to the Cable and Circuit module

1. Display the list of projects (**Organization management/ Organization/ Projects**).
2. Create a project for each cabling operation you will perform.
3. Associate one or more work orders with the project.
4. Execute the cabling wizards by referencing the appropriate project and work order.
These wizards automatically populate the following links in the projects:
 - **Assets (AstProjDescs)**
 - **Cables (ProjectCables)**

- **Project traces (ProjectTraces)**

These wizards automatically populate the following links in the work orders:

- **Title (Title)**
- **Work order devices (ProjBien)**
- **Project cables (ProjCable)**
- **Project traces (ProjTraceOut)**

Prerequisites

No prerequisites.

Fields and links that must absolutely be populated

Projects and work orders associated with cabling - Fields and links that must absolutely be populated

Label of the field or link	SQL name of the field or link
Projects table (amProject)	
Title	Title
Work orders	WorkOrders
Work orders table (amWorkOrder)	
Work order #	WONo

Creating the projects and work orders for the practical case

We are going to create one project per wizard, which you will execute in the practical case. We will also associate a work order to each one of these projects.

Thus, you will be able to consult these projects and work orders in able to better understand what the wizards create, modify or delete.

Creating the projects

1. Display the list of projects (**Organization management/ Organization/ Projects**).
2. Create a new record per project and populate the following fields:

	Label (Title)
Value for record 1	Create a termination field
Value for record 2	Disconnect bundles
Value for record 3	Disconnect ports
Value for record 4	Duplicate a wiring closet
Value for record 5	Swap assets
Value for record 6	Remove cables
Value for record 7	Remove lateral cables
Value for record 8	Remove cables by location
Value for record 9	Expand a termination field
Value for record 10	Cross-connect generic hub
Value for record 11	Cross-connect specific hub
Value for record 12	Cross-connect bundles
Value for record 13	Cross-connect ports
Value for record 14	Cross-connect ports (internal)
Value for record 15	Cross-connect wallfield
Value for record 16	Run lateral cables
Value for record 17	Run riser cables
Value for record 18	Relocate cables
Value for record 19	Transfer project assets
Value for record 20	Relocate project connections
Value for record 21	Transfer project cables

Creating a Work orders link for each project

1. Select each project one by one.
2. Select the **Work orders** tab and add a new work order to the project by populating the following fields:

Project label	Value of the # of work orders (WONo)
Create a termination field	Accept the value proposed by Asset Manager.
Disconnect bundles	Accept the value proposed by Asset Manager.
Disconnect ports	Accept the value proposed by Asset Manager.
Duplicate a wiring closet	Accept the value proposed by Asset Manager.
Swap assets	Accept the value proposed by Asset Manager.
Remove cables	Accept the value proposed by Asset Manager.
Remove lateral cables	Accept the value proposed by Asset Manager.
Remove cables by location	Accept the value proposed by Asset Manager.
Expand a termination field	Accept the value proposed by Asset Manager.
Cross-connect generic hub	Accept the value proposed by Asset Manager.
Cross-connect specific hub	Accept the value proposed by Asset Manager.
Cross-connect bundles	Accept the value proposed by Asset Manager.
Cross-connect ports	Accept the value proposed by Asset Manager.
Cross-connect ports (internal)	Accept the value proposed by Asset Manager.
Cross-connect wallfield	Accept the value proposed by Asset Manager.
Run lateral cables	Accept the value proposed by Asset Manager.
Run riser cables	Accept the value proposed by Asset Manager.
Relocate cables	Accept the value proposed by Asset Manager.
Transfer project assets	Accept the value proposed by Asset Manager.
Relocate project connections	Accept the value proposed by Asset Manager.
Transfer project cables	Accept the value proposed by Asset Manager.

Natures for cables and cable devices

Creating the natures of cables and cable devices	38
Creating the natures of cables and cable devices for the practical case	39

The natures define the information that is common to certain groups of assets. The cables and cable devices each require a specific nature that will be associated with the models of cables and cable devices.

The information that you define at the nature level determines whether certain fields and links will be displayed in the detail of models, cables and assets.

Table names

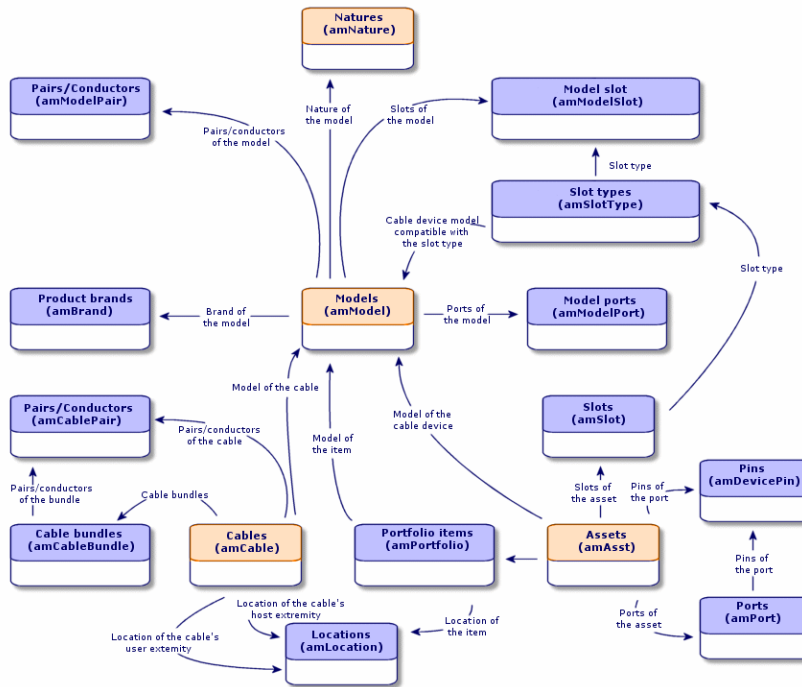
Natures (amNature)

Access menu

Portfolio management/ Asset configurations/ Natures

Simplified data model

Cables and cable devices - data model



Creating the natures of cables and cable devices

1. Display the list of natures (**Portfolio management/ Asset configurations/ Natures**).
2. Create a nature for the cable devices and a nature for the cables.

Prerequisites

No prerequisites.

Fields and links that must absolutely be populated**Natures reserved for cables and cable devices - Fields and links that must absolutely be populated**

Label of the field or link	SQL name of the field or link	Remarks
Name	Name	
Created	seBasis	Must be set to Asset for the cable devices and Cable for the cables.
Management constraints	seMgtConstraint	Does not apply to cables. This field must be set to Unique asset tag for the cable devices.
Also create	seOverflowTbl	Does not apply to cables. This field must be set to None for the cable devices.
Cable device	bDevice	Does not apply to cables. This option must be checked for the cable devices.
Can be connected	blsCnxClient	Does not apply to cables. This option must be checked for the cable devices.

Creating the natures of cables and cable devices for the practical case

We are going to create a nature for the cable devices and a nature for the cables.

1. Display the list of natures (**Portfolio management/ Asset configurations/ Natures**).
2. Create a new record per nature and populate the following fields:

Field or link to populate	Value for record 1	Value for record 2
Name (Name)	Cable	Cable device
Created (seBasis)	Cable	Portfolio item
Management constraints (seMgtConstraint)	Do not populate.	Unique asset tag
Also create (seOverflowTbl)	Do not populate.	None
Cable device (bDevice)	Do not populate.	Check
Can be connected (blsCnxClient)	Do not populate.	Check

Brands of cable and cable device models

Creating the brands of the cable and cable device models	40
Creating the brands of the cable and cable device models for the practical case	40

Table names

Brands (amBrand)

Access menu

Portfolio management/ Catalog/ Brands

Creating the brands of the cable and cable device models

1. Display the list of brands (**Portfolio management/ Catalog/ Brands**).
2. Create one record per brand of cable device and cable of your network.

Prerequisites

No prerequisites.

Fields and links that must absolutely be populated

Brands of cable and cable device models - Fields and links that must absolutely be populated

Label of the field or link	SQL name of the field or link
Name	Name

Creating the brands of the cable and cable device models for the practical case

We are going to create the brands of the cable devices and cables for our practical case. You will then be able to associate them with the models that you will create later.

1. Display the list of brands (**Portfolio management/ Catalog/ Brands**).
2. Create a new record per brand and populate the following fields:

Field or link to populate	Value for record 1	Value for record 2	Value for record 3	Value for record 4
Name (Name)	Corel	Hewlett Packard	ITT	Generic

Cable models

Creating cable models	41
Create pairs wizard	43
Creating the cable models for the practical case	44

The cable models enable you to create the cables in your network in the **Cables** table (**amCable**).

Definitions

Cable

Table names

- **Models (amModel)**
- **Pairs/Conductors (amCablePair)**

Access menu

Portfolio management/ Asset configurations/ Models

Creating cable models

1. Display the list of models (**Portfolio management/ Asset configurations/ Models**).
2. Create a record for each cable model in your network.
3. Associate pairs/conductors with the cable model.
You have the following possibilities:
 - Add each pair/conductor manually by clicking **+** (Windows client) or **Add** (Web client) in the **Cable** tab.

- Launch the **Create pairs** wizard.

Prerequisites

You should have already created:

- A nature for the cables.
- The brands of the cables.
- Label rules.
- Cable types.
- Color codes.
- Pair/ Conductor types.

Fields and links that must absolutely be populated

Cable models - Fields and links that must absolutely be populated

Label of the field or link	SQL name of the field or link	Remarks
Models table (amModel)		
Name	Name	
Nature	Nature	Must be a cable nature.
Label rule	LabelRule	
Cable type	CableType	
Color code	ColorCode	If you want the pairs/conductors to be identified by a color code.
Model pairs/conductors	Pairs	
Pairs/Conductors table (amModelPair)		
Name	Name	
#	sSequenceNumber	
Pair/Conductor type	CabPairType	
Color code entry	ColorCodeDet	If you selected a color code at the level of the cable model.

Create pairs wizard

Functions performed by the wizard

This wizard generates pairs having the same type.

Prerequisites

You should have already created:

- Pair/ Conductor types

Launching the wizard

To access this wizard, you need to select a record or field (not a link) in the **Models** table (**amModel**):

1. Display the list of models (**Portfolio management/ Asset configurations/ Models**).
2. Select the model in the list window, or select a field (not a link) in the **Models** table.
3. Select the **Create pairs** wizard.

Information used when using the wizard

Create pairs wizard - description of fields to populate

Label displayed by the wizard	Explanations
Default type for each pair/conductor created.	The selected value populates the Pair/conductor type link (CabPairType) of each pair/conductor created.
Number to begin with	<p>For example, enter 1 if you want to create 4 numbered pairs from 1 to 4. Enter 5 if you want to create 4 numbered pairs from 5 to 8.</p> <p>This number populates the # field (sSequenceNumber) of the model pairs.</p> <p>The number displayed by default in this field corresponds to the largest value that already exists in the # field (sSequenceNumber), plus 1 (if the model contains 4 pairs, numbered 1 through 4, this number will be 5).</p> <p>The pair number is linked with the number of the color code entries of the model to associate a color code entry to a pair/conductor.</p>

Data created or modified by the wizard

The wizard creates records in the **Pairs/Conductors** table (**amModelPair**).

The wizard populates the following fields:

Create pairs wizard - created or modified data

Field label	SQL name of the field	Explanations
Name	Name	The same value as the # field (sSequenceNumber).
#	sSequenceNumber	A sequential number just after the largest value already existing in the # field (sSequenceNumber).
Pair/Conductor type	CabPairType	The pair/conductor type is selected using the wizard.
Color code entry	ColorCodeDet	Color code entry associated with the cable whose number (sSequenceNumber) corresponds to the number of the conductor pair (sSequenceNumber).

Viewing the result

The easiest way to view the result of this wizard is to look at the **Cable** tab of the model.

After having launched the wizard

You need to edit the pairs/conductors manually if you want to change certain information relating to them.

Creating the cable models for the practical case

We are going to create a 32-pair cable model (for the telephone riser) and a 4-pair cable model (for the given lateral and riser cables).

Creating the models

1. Display the list of models (**Portfolio management/ Asset configurations/ Models**).
2. Create a new record per model and populate the following fields:

Field or link to populate	Value for record 1	Value for record 2
Name (Name)	L 120 - Category 5 - 32 twisted pairs	FTP - Category 5 - 4 twisted pairs
Nature (Nature)	Cable	Cable
Brand (Brand)	Corel	Corel
Label rule (LabelRule)	Practical case - Cables	Practical case - Cables

Field or link to populate	Value for record 1	Value for record 2
Cable type (CableType)	Twisted pairs	Twisted pairs
Color code (ColorCode)	568B - 32 pairs	568B - 4 pairs

Creating the pairs/conductors for each cable model

1. Select the model.
2. Launch the **Create pairs** wizard one time for each model, and specify the following values:

Label displayed by the wizard	Value for the L 120 - Category 5 - 32 twisted pairs cable	Value for the FTP - Category 5 - 4 twisted pairs cable
Number of pairs/conductors to generate	32	4
Default type for each pair/conductor created	Copper	Copper
Number to begin with	1	1

Cable device models without slots

Creating the models of cable devices without slots	46
Create ports wizard	47
Creating the models of cable devices without slots for the practical case	49

Definitions

[Cable device](#)

Table names

- **Models (amModel)**
- **Model ports (amModelPort)**

Access menu

Portfolio management/ Asset configurations/ Models

Creating the models of cable devices without slots

1. Display the list of models (**Portfolio management/ Asset configurations/ Models**).
2. Create a record for each cable device model in your network.
3. Add ports to the model.
You have the following choices:
 - Add each port manually by clicking **+** (Windows client) or **Add** (Web client) in the **Ports** tab.
 - Launch the **Create ports** wizard.

Prerequisites

You should have already created:

- A nature for the cable devices.
- The brands of the cable devices.
- Label rules.
- Device types.
- Connection types.
- Duties.

Fields and links that must absolutely be populated

Models of cable devices without slots - Fields and links that must absolutely be populated

Label of the field or link	SQL name of the field or link	Remarks
Models table (amModel)		
Name	Name	
Nature	Nature	Must be a cable device nature.
Label rule	LabelRule	
Device type	DeviceType	
Number of pins/terminals	IPins	If the device is connected to the network by pins on at least one side.
Number of sides	seDevSdType	

Models of cable devices without slots - Fields and links that must absolutely be populated, continued

Label of the field or link	SQL name of the field or link	Remarks
Ports	Ports	If the device is connected to the network by ports on all sides.
Ports table (amModelPort)		
Port #	PortNo	If you create ports.
#	sSequenceNumber	If you create ports.
Connection type	CabCnxType	If you create ports.
Function	Duty	If you create ports.

Connection by ports or by pins

There are two connection modes for the cable devices:

- By ports
- By pins

If the device is connected to the network by ports on all sides:

- Assign the value **0** to the **Number of pins/terminals** field (**IPins**).
- Create the **Ports** links (**Ports**). These ports will be associated with the cable bundles using the **Cable links** table (**amCableLink**).

If the device is connected to the network by pins on at least one side:

- Populate the **Number of pins/terminals** field (**IPins**) with the total number of pins contained by the cable device.
- Only create the **Ports (Ports)** link if you want to use the cabling wizards to create cable links to the device pins. In effect, such wizards create virtual ports that they associate automatically to the existing pins that are free.

Create ports wizard

Functions performed by the wizard

This wizard generates ports having the same duty and the same connection type.

Prerequisites

You should have already created:

- Connection types
- Functions

Launching the wizard

To access this wizard, you need to select a record or a field (not a link) in the **Models** table (**amModel**):

1. Display the list of models (**Portfolio management/ Asset configurations/ Models**).
2. Select the model in the list window, or select a field (not link) in the **Models** table.
3. Select the **Create ports** wizard.

Information used when using the wizard**Create ports wizard - description of fields to populate**

Label displayed by the wizard	Explanations
Default type for each port created	The selected value populates the Connection type link (CabCnxType) of each port created.
Type of duty by default for each port created	The selected value populates the Duty link (Duty) of each port created.
Number to begin with	For example, enter 1 if you want to create 4 numbered ports from 1 to 4. Enter 5 if you want to create 4 numbered ports from 5 to 8. This number populates the Port # field (PortNo) of the model ports. The number displayed by default by the wizard corresponds to the largest existing port number plus 1 (if the model contains 4 ports, numbered 1 through 4, this number will be 5).

Data created or modified by the wizard

The wizard creates records in the **Model ports** table (**amModelPort**).

The wizard populates the following fields:

Create ports wizard - data created or modified by the wizard

Field label	SQL name of the field	Explanations
Sequence number of the port in the model	sSequenceNumber	A sequential number that begins with the starting number specified using the wizard.
Port #	PortNo	A sequential number that begins with the starting

Create ports wizard - data created or modified by the wizard, continued

Field label	SQL name of the field	Explanations
		number specified using the wizard.
Connection type	CabCnxType	The connection type selected using the wizard.
Function	Duty	The duty selected using the wizard.

Viewing the result

The easiest way to view the result of this wizard is to look at the **Ports** tab of the model.

After having launched the wizard

You need to edit the ports manually if you want to change certain information relating to them.

Creating the models of cable devices without slots for the practical case

We are going to create the models that will help create the following cable devices without slots:

- 3-port wall outlet
- Patch panels
- Switch modules

Creating the models

1. Display the list of models (**Portfolio management/ Asset configurations/ Models**).
2. Create a new record per model and populate the following fields:

Field or link to populate	Value for record 1	Value for record 2	Value for record 3	Value for record 4
Name (Name)	Procurve 10/100 Base T - 8 ports	24-port preloaded patch panel	32-port patch panel (256 pins)	3-port wall outlet
Nature (Nature)	Cable device	Cable device	Cable device	Cable device
Brand (Brand)	Hewlett Packard	Generic	Generic	ITT

Field or link to populate	Value for record 1	Value for record 2	Value for record 3	Value for record 4
Device type (DeviceType)	Switch module	Patch panel	Patch panel	Wall outlet
Number of pins/terminals (IPins)	0	0	256	24
Number of sides (seDevSdType)	Single sided	Double sided	Double sided	Single sided

Creating the ports for each device model for which the network connection is established by ports

For each model whose **Number of pins/terminals (IPins)** is null:

1. Select the **Procurve 10/100 Base T- 8 ports** model.
2. Launch the **Create ports** wizard one time by entering the following information:

Label displayed by the wizard	Value
Number of ports to generate	8
Default connection type for each port to generate	RJ45 - 568B - Port
Default type for each port created	Data
Number to begin with	1

3. Select the **24-port preloaded patch panel** model.
4. Launch the **Create ports** wizard one time by entering the following information:

Label displayed by the wizard	Value
Number of ports to generate	24
Connection type by default for each port to generate	RJ45 - 568B - Port
Type of duty by default for each port created	Data
Number to begin with	1

Slot types

Creating slot types 52
 Creating the slot types for the practical case 52

Definitions

Slot type

Table names

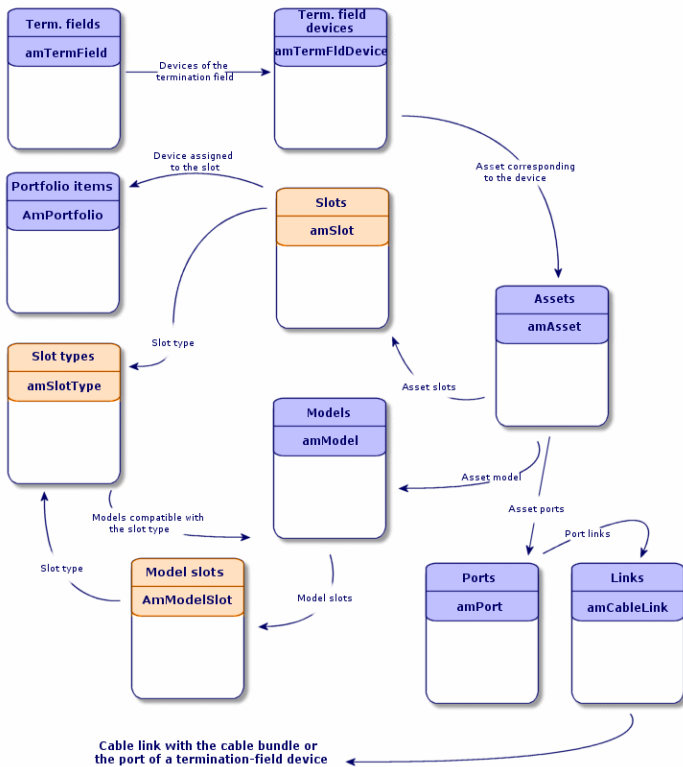
Slot types (amSlotType)

Access menu

Portfolio management/ Cable/ Slot types

Simplified data model

Slots - data model



Creating slot types

1. Display the list of slot types (**Portfolio management/ Cable/ Slot types**).
2. Create a record per slot type of your termination-field devices.

Prerequisites

You need to have already created the models of modules or extensions to insert in the slots.

Fields and links that must absolutely be populated

Slot types - Fields and links that must absolutely be populated

Label of the field or link	SQL name of the field or link
Name	Name
Compatible models	SlotTypeModels

Creating the slot types for the practical case

We are going to create a slot type for the **ProCurve Switch 4000 M - 10 slots** model that will receive the **Procurve 10/100 Base T - 8 ports** models.

Note: You are going to create the **ProCurve Switch 4000 M - 10 slots** in another step.

1. Display the list of slot types (**Portfolio management/ Cable/ Slot types**).
2. Create a new record in the **Slot types** table (**amSlotType**) and populate the following fields:

Field or link to populate	Value
Name (Name)	8-port switch module
Compatible models (SlotTypeModels)	Procurve 10/100 Base T - 8 ports

Cable device models with slots

Creating the models of cable devices with slots53

Create slots wizard	55
Creating the models of cable devices with slots for the practical case	56

Definitions

[Cable device](#)

Table names

- **Models (amModel)**
- **Model slots (amModelSlot)**
- **Model ports (amModelPort)**

Access menu

Portfolio management/ Asset configurations/ Models

Creating the models of cable devices with slots

1. Display the list of models (**Portfolio management/ Asset configurations/ Models**).
2. Create a record for each cable device model in your network.
3. Associate ports or slots to the model.
You have the following choices:
 - Add each port or slot manually by clicking **+** (Windows client) or **Add** (Web client) in the **Ports/ Slots** tab.
 - Launch either the **Create ports** or **Create slots** wizard.

Connection by ports or by pins

[Connection by ports or by pins](#)

Create ports wizard

[Create ports wizard](#)

Prerequisites

You should have already created:

- A nature for the cable devices.
- The brands of the cable devices.
- Label rules.
- Device types.

- Connection types.
- Duties.
- Slot types.

Fields and links that must absolutely be populated

Models of cable devices with slots - Fields and links that must absolutely be populated

Label of the field or link	SQL name of the field or link	Remarks
Models table (amModel)		
Name	Name	
Nature	Nature	Must be a cable device nature.
Label rule	LabelRule	
Device type	DeviceType	
Number of pins/terminals	IPins	If the device is connected to the network by pins on at least one side.
Number of sides	seDevSdType	
Ports	Ports	If the device is connected to the network by ports on all sides.
Model slots	ModelSlots	If the device must receive connection modules in its slots.
Ports table (amPort)		
Port #	PortNo	If you create ports.
#	sSequenceNumber	If you create ports.
Connection type	CabCnxType	If you create ports.
Function	Duty	If you create ports.
Model slots table (amModelSlot)		
Name	Name	If you create slots.
#	sSequenceNumber	If you create slots.
Slot type	SlotType	If you create slots.

Create slots wizard

Functions performed by the wizard

This wizard generates slots having the same type.

Prerequisites

You should have already created:

- Slot types

Launching the wizard

To access this wizard, you need to select a record or select a field (not a link) in the **Models** table (**amModel**).

1. Display the list of models (**Portfolio management/ Asset configurations/ Models**).
2. Select the model in the list window, or select a field (not a link) in the **Models** table.
3. Select the **Create slots** wizard.

Information used when using the wizard

Create slots wizard - description of fields to populate

Label displayed by the wizard	Explanations
Default type for each slot created	The selected value populates the Slot type link (SlotType) of each slot created.
Number to begin with	<p>For example, enter 1 if you want to create 4 numbered slots from 1 to 4. Enter 5 if you want to create 4 numbered slots from 5 to 8.</p> <p>This number populates the # field (sSequenceNumber) and Name field (amModelSlot) of the model slots.</p> <p>The number displayed by default by the wizard corresponds to the largest existing slot number plus 1 (if the model contains 4 slots, numbered 1 through 4, this number will be 5).</p>

Data created or modified by the wizard

The wizard creates records in the **Model slots** table (**amModelSlot**).

The wizard populates the following fields:

Create slots wizard - created or modified data

Field label	SQL name of the field	Explanations
Name	Name	A sequential number that begins with the starting number specified using the wizard.
#	sSequenceNumber	A sequential number that begins with the starting number specified using the wizard.
Slot type	SlotType	The slot type selected using the wizard.

Viewing the result

The easiest way to view the result of this wizard is to look at the **Slots** tab of the model.

After having launched the wizard

You need to edit the slots manually if you want to change certain information relating to them.

Creating the models of cable devices with slots for the practical case

We are going to create the model of a modular switch that has 10 slots:

Creating the model

1. Display the list of models (**Portfolio management/ Asset configurations/ Models**).
2. Create a new record and populate the following fields:

Field or link to populate	Value
Name (Name)	ProCurve Switch 4000 M - 10 slots
Nature (Nature)	Cable device
Brand (Brand)	Hewlett Packard
Device type (DeviceType)	Switch
Number of pins/terminals (IPins)	0
Number of sides (seDevSdType)	Single sided

Creating the slots

1. Select the **ProCurve Switch 4000 M - 10 slots** model.
2. Launch the **Create slots** wizard one time for each model, and specify the following values:

Label displayed by the wizard	Value
Number of slots to generate	10
Default type for each slot created	8-ports switch module
Number to begin with	1

Topologies

Definitions

[Topology](#)

[Topology step](#)

[Host](#)

[User](#)

Table names

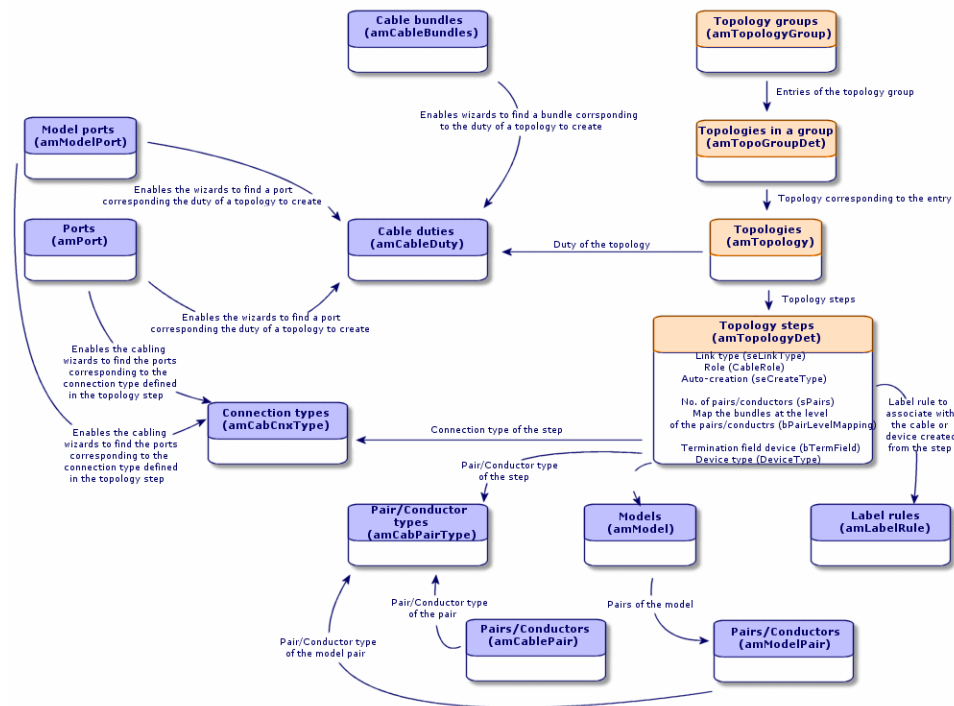
- **Topologies** (amTopology)
- **Topology steps** (amTopologyDet)

Access menu

Portfolio management/ Cable/ Topologies

Simplified data model

Topologies - data model



Creating topologies

1. Display the list of topologies (**Portfolio management/ Cable/ Topologies**).
2. Create a topology and its steps/ for each standard trace of your network.

Topology example

The topology of a telephone connection between the standard user and the floor's termination field is composed of the following steps:

1. A link at the level of the wall outlet.
2. A link at the level of a lateral cable.
3. A link at the level of a termination-field device.

Prerequisites

You should have already created the:

- Duties
- Label rules
- Cable types

- Pair/conductor types
- Device types
- Connection types
- Roles
- Models of cables and cable devices to create from the topology step.

Fields and links that must absolutely be populated

Topologies - Fields and links that must absolutely be populated

Label of the field or link	SQL name of the field or link	Remarks
Topologies table (amTopology)		
Name	Name	
Direction	seTraceDir	
Function	Duty	
Topology steps	Detail	
Topology steps table (amTopologyDet)		
#	sSequenceNumber	
Link type	seLinkType	
Label rule	LabelRule	
Cable type	CableType	If seLinkType = Cable
Device type	DeviceType	If seLinkType = Device
Pair/Conductor type	CabPairType	If seLinkType = Cable
Connection type	CabCnxType	If seLinkType = Device
Map bundles at pair/conductor level	bPairLevelMapping	If seLinkType = Cable
Termination-field device	bTermField	If seLinkType = Device
No. of pairs/conductors	sPairs	If seLinkType = Cable
Auto-create	seCreateType	
Model	Model	If seCreateType <> Never create
Role	CableRole	<ul style="list-style-type: none"> • If seLinkType = Cable

Topologies - Fields and links that must absolutely be populated, continued

Label of the field or link	SQL name of the field or link	Remarks
		<ul style="list-style-type: none"> • or bTermField = Yes

Creating the topologies for the practical case

We are going to create two topologies:

- Data connection between the wall outlet and the floor's termination field.
- Telephone connection between the wall outlet and the floor's termination field.

These topologies break down into three steps:

1. A link at the level of the wall outlet.
2. A link at the level of the lateral cable.
3. A link at the level of the termination-field device.

These topologies are then assembled together in a group of topologies.

Creating the topologies

1. Display the list of topologies (**Portfolio management/ Cable/ Topologies**).
2. Create a new record per topology and populate the following fields:

Field or link to populate	Value for record 1	Value for record 2
Name (Name)	Telephone outlet to termination field.	Local network outlet to termination field
Direction (seTraceDir)	User to host	User to host
Duty (Duty)	Voice	Data

Creating the steps for the Telephone outlet to termination field topology

1. Select the topology.
2. Create step 1 by populating the following fields:

Field or link to populate	Value
# (sSequenceNumber)	1
Cable link type (seLinkType)	Device
Termination field device (bTermField)	Unselect the box.
Label rule (LabelRule)	Practical case - Wall outlet link
Connection type (CabCnxType)	RJ45 - 568B - Pin
Device type (DeviceType)	Wall outlet
Auto-create (seCreateType)	Create if not available
Model (Model)	3-port outlet

3. Create step 2 by populating the following fields:

Field or link to populate	Value
# (sSequenceNumber)	2
Cable link type (seLinkType)	Cable
Role (CableRole)	Lateral
Label rule (LabelRule)	Practical case - Link - Sequentially, by pairs
Pair/ Conductor type (CabPairType)	Copper (2)
Cable type (CableType)	Twisted pairs
Auto-create (seCreateType)	Always create
Map bundles at pair/conductor level (bPairLevelMapping)	Check this selection box.
No. of pairs/conductors (sPairs)	2
Model (Model)	FTP - Category 5 - 4 twisted pairs

4. Create step 3 by populating the following fields:

Field or link to populate	Value
# (sSequenceNumber)	3
Cable link type (seLinkType)	Device

Field or link to populate	Value
Termination field device (bTermField)	Check this selection box.
Role (CableRole)	Lateral
Label rule (LabelRule)	Practical case - Port of a termination-field patch panel link
Connection type (CabCnxType)	RJ45 - 568B - Pin
Device type (DeviceType)	Patch panel

Creating the steps for the Local network outlet to termination field topology

1. Select the topology.
2. Create step 1 by populating the following fields:

Field or link to populate	Value
# (sSequenceNumber)	1
Cable link type (seLinkType)	Device
Termination field device (bTermField)	Unselect the box.
Label rule (LabelRule)	Practical case - Wall outlet link
Connection type (CabCnxType)	RJ45 - 568B - Pin
Device type (DeviceType)	Wall outlet
Auto-create (seCreateType)	Create if not available
Model (Model)	3-port outlet

3. Create step 2 by populating the following fields:

Field or link to populate	Value
# (sSequenceNumber)	2
Cable link type (seLinkType)	Cable
Role (CableRole)	Lateral
Label rule (LabelRule)	Practical case - Link - Sequentially, by pairs
Pair/ Conductor type (CabPairType)	Copper (2)
Cable type (CableType)	Twisted pairs
Auto-create (seCreateType)	Always create
Model (Model)	FTP - Category 5 - 4 twisted pairs
Map bundles at pair/conductor level (bPairLevelMapping)	Check this selection box.
No. of pairs/conductors (sPairs)	4

4. Create step 3 by populating the following fields:

Field or link to populate	Value
# (sSequenceNumber)	3
Cable link type (seLinkType)	Device
Termination field device (bTermField)	Check this selection box.
Role (CableRole)	Lateral
Label rule (LabelRule)	Practical case - Port of a termination-field patch panel link
Connection type (CabCnxType)	RJ45 - 568B - Port
Device type (DeviceType)	Patch panel

Topology groups

Creating topology groups65

Creating the topology groups for the practical case 66

Definitions

Topology group

Table names

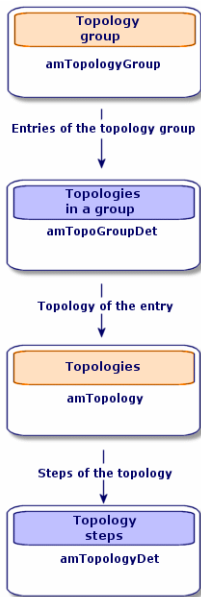
- Topology groups (amTopologyGroup)
- Topologies in a group (amTopoGroupDet)

Access menu

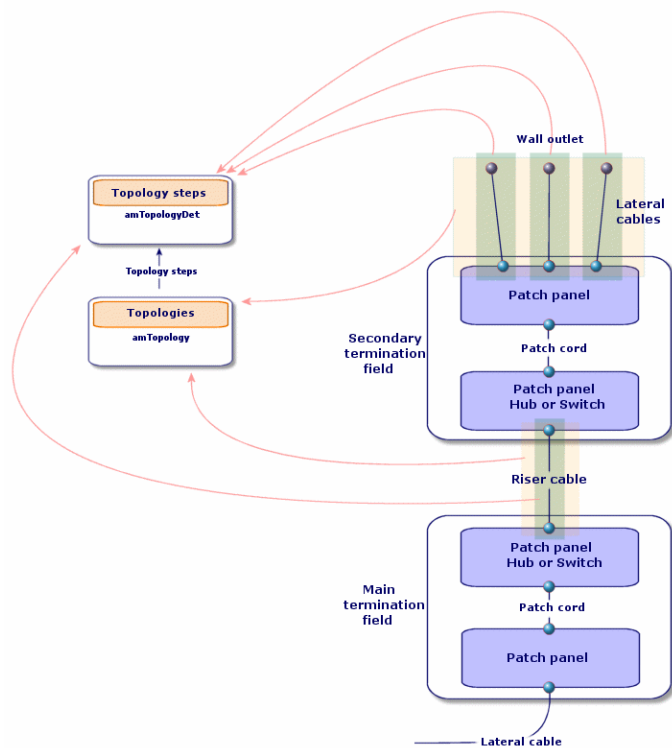
Portfolio management/ Cable/ Topology groups

Simplified data model

Topology groups - data model



Topologies - correspondence between the termination field of a network



Creating topology groups

1. Display the list of topology groups (**Portfolio management/ Cable/ Topology groups**).
2. Create one record per configuration type of your network.

Example - A standard workstation is composed of 3 topologies:

- Telephone outlet to a termination field.
- Local network outlets to a termination field.
- Local network outlets to termination field.

Prerequisites

You need to have already created the topologies.

Fields and links that must absolutely be populated

Topology groups - Fields and links that must absolutely be populated

Label of the field or link	SQL name of the field or link
Topology groups table (amTopologyGroup)	
Name	Name
Topologies of the group	TopoGrpDetail
Topologies in a group table (amTopoGroupDet)	
#	sSequenceNumber

Creating the topology groups for the practical case

We are going to create a group of topologies that reunite the following topologies:

- 1 telephone outlet to a termination field.
- 2 local network outlets to a termination field.

Creating the topology group

1. Display the list of topology groups (**Portfolio management/ Cable/ Topology groups**).
2. Create a record and populate the following fields:

Field or link to populate	Value
Name (Name)	Standard workstation

Adding topologies to the Standard workstation group

1. Select the **Standard workstation** topology group.
2. Add topology 1 by populating the following fields and links:

Field or link to populate	Value
# (sSequenceNumber)	1
Topology (Topology)	Telephone outlet to termination field.

3. Add topology 2 by populating the following fields and links:

Field or link to populate	Value
# (sSequenceNumber)	2
Topology (Topology)	Local network outlet to termination field

4. Add topology 3 by populating the following fields and links:

Field or link to populate	Value
# (sSequenceNumber)	3
Topology (Topology)	Local network outlet to termination field

Termination-field configurations

Creating termination-field configurations	70
Creating the termination-field configurations for the practical case	72

Definitions

[Termination-field configuration](#)

Table names

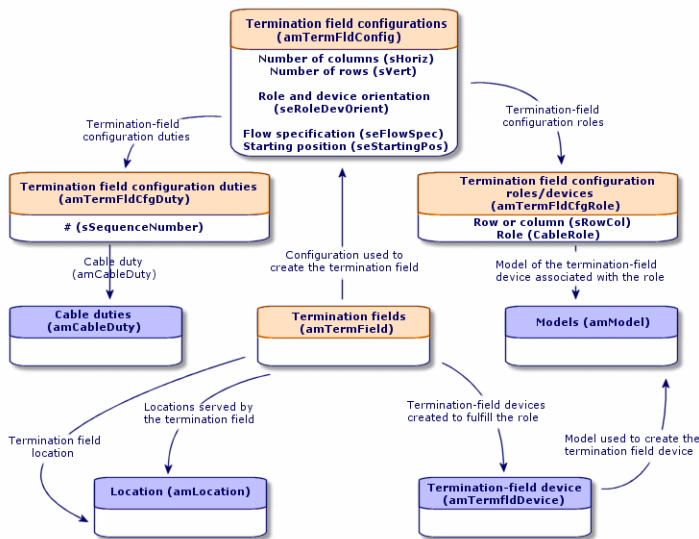
- Termination field configurations (amTermFldConfig)
- Termination-field configuration duties/services (amTermFldCfgDuty)
- Termination field configuration roles and devices (amTermFldCfgRole)

Access menu

Portfolio management/ Cable/ Termination field configurations

Simplified data model

Termination-field configuration - data model

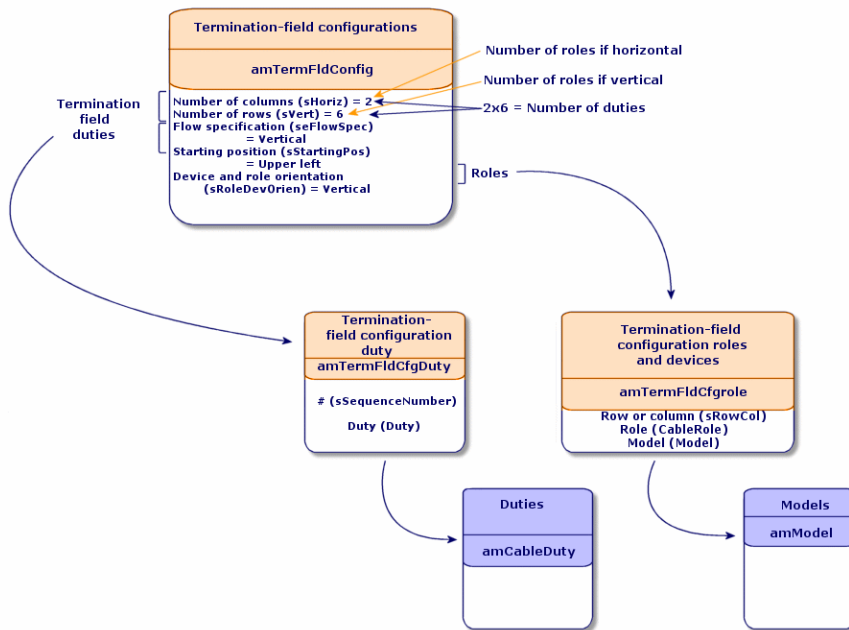


Parameters of a termination-field configuration

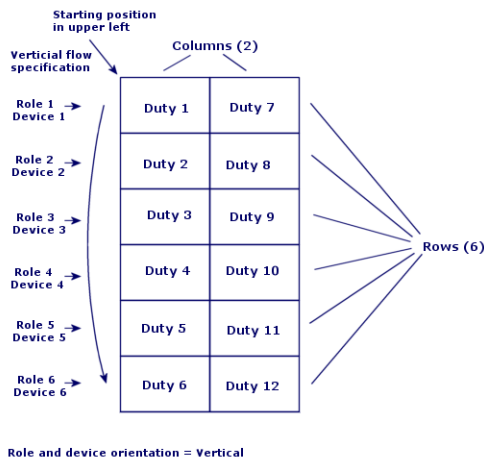
A termination-field configuration defines numerous parameters that are used by the cabling wizards to create a termination field.

The following diagrams will explain how these parameters are interpreted when you create a termination field.

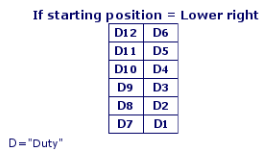
Example of termination-field configuration - representation in Asset Manager



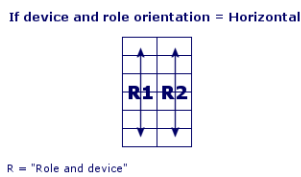
Example of termination-field configuration - correspondence at the termination field level



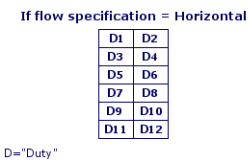
Termination-field configuration - example of the impact resulting from changing the starting position



Termination-field configuration - example of the impact resulting from changing the cable device and role orientations

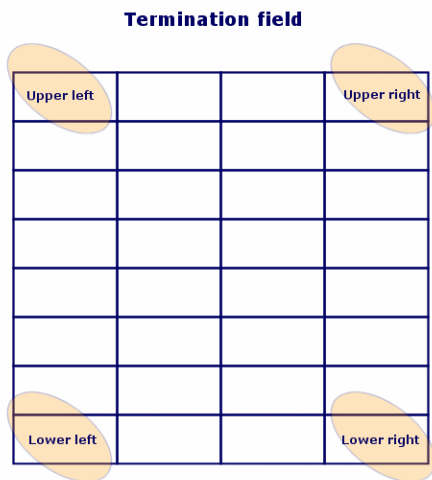


Termination-field configuration - example of the impact resulting from changing the flow specification



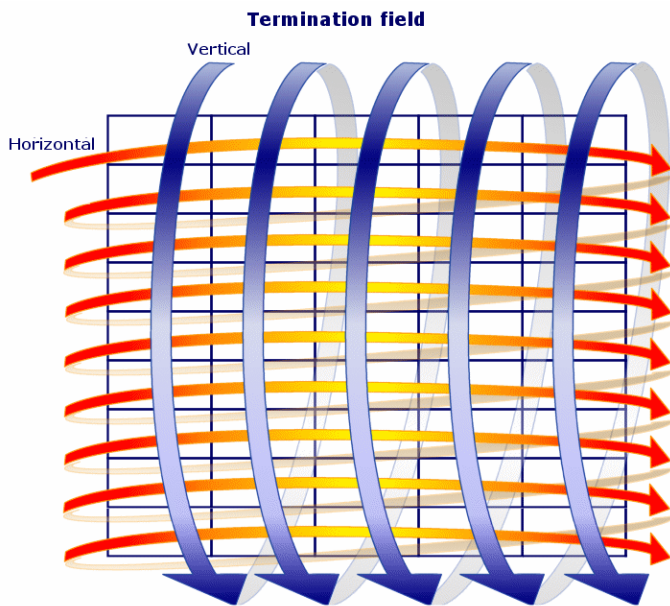
Starting position

Termination-field configuration - signification of the starting positions



Flow specification

Termination-field configuration - signification of the flow specification



Creating termination-field configurations

1. Display the list of termination-field configurations (**Portfolio management/ Cable/ Termination field configurations**).
2. Create one record per termination-field type of your network.

Prerequisites

You should have already created the:

- Functions
- Label rules
- Roles
- Termination-field configuration models

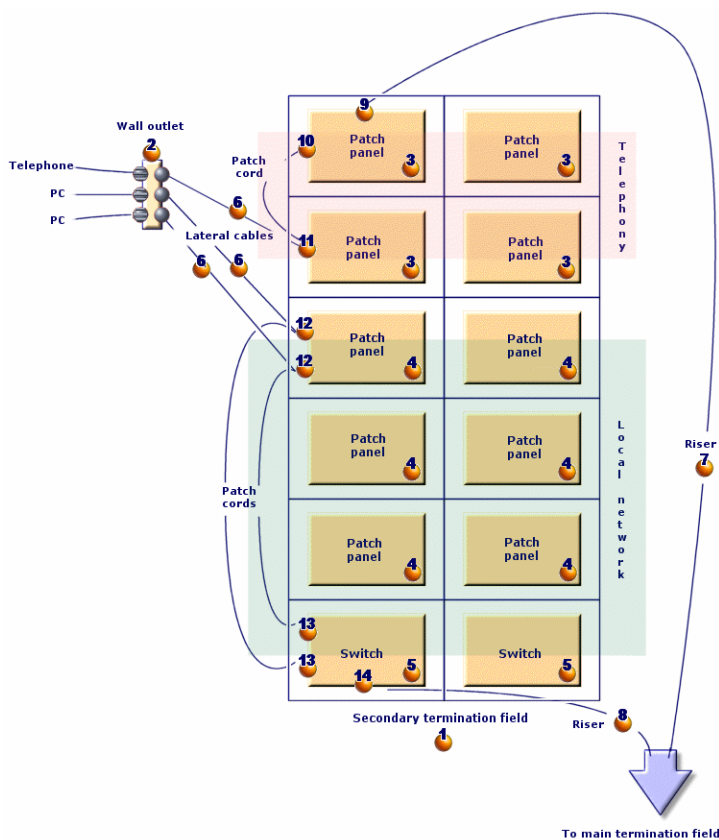
Fields and links that must absolutely be populated**Termination-field configurations - Fields and links that must absolutely be populated**

Label of the field or link	SQL name of the field or link
Termination field configurations table (amTermFldConfig)	
Name	Name
Number of columns	sHoriz
Number of rows	sVert
Flow specification	seFlowSpec
Starting position	seStartingPos
Termination field configuration duties/services	TermFldCfgDuty
Role and device orientation	seRoleDevOrient
Label rule	LabelRule
Termination field configuration roles and devices	TermFldConfRoles
Termination field configuration duties/services (amTermFldCfgDuty)	
#	sSequenceNumber
Function	Duty
Termination field configuration roles and devices table (amTermFldCfgRole)	
Row or column	sRowCol
Role	CableRole
Model	Model

Creating the termination-field configurations for the practical case

We are going to create a termination-field configuration based on the following model:

Practical case - Termination-field configuration to create



Creating the termination-field configuration

1. Display the list of termination-field configurations (**Portfolio management/ Cable/ Termination field configurations**).
2. Create a record and populate the following fields:

Field or link to populate	Value
Name (Name)	Standard termination field

Field or link to populate	Value
Number of columns (sHoriz)	2
Number of rows (sVert)	6
Flow specification (seFlowSpec)	Vertical
Starting position (seStartingPos)	Top-left
Role and device orientation (seRoleDevOrient)	Vertical
Label rule (LabelRule)	Practical case - Wallfield assets

Creating the duties of the Standard termination field configuration

1. Select the termination-field configuration.
2. Select the **Duties** tab and add duties by populating the following fields and links:

Field or link to populate	# (sSequenceNumber)	Duty (Duty)
Value for duty 1	1	Voice
Value for duty 2	2	Voice
Value for duty 3	3	Data
Value for duty 4	4	Data
Value for duty 5	5	Data
Value for duty 6	6	Data
Value for duty 7	7	Voice
Value for duty 8	8	Voice
Value for duty 9	9	Data
Value for duty 10	10	Data
Value for duty 11	11	Data
Value for duty 12	12	Data

Creating the roles of the Standard termination field configuration

1. Select the termination-field configuration.
2. Select the **Roles and devices** tab and add roles/devices by populating the following fields and links:

	Row or column (sRowCol)	Role (CableRole)	Model (Model)
Value for role 1	1	Riser	32-port patch panel (256 pins)
Value for role 2	2	Lateral	32-port patch panel (256 pins)
Value for role 3	3	Lateral	24-port preloaded patch panel
Value for role 4	4	Lateral	24-port preloaded patch panel
Value for role 5	5	Lateral	24-port preloaded patch panel
Value for role 6	6	Riser	ProCurve Switch 4000 M - 10 slots

Chapter 5: Termination fields

Create a termination field wizard	76
Use the Create a termination field wizard for the practical case	81
Expand termination field wizard	83
Using the Expand termination field wizard in the practical case	87
Duplicate wiring closet wizard	88
Use the Duplicate wiring closet wizard for the practical case.	93

Definitions

Termination field

Table names

Termination fields (amTermField)

Access menu

Portfolio management/ Cable/ Termination fields

Creating termination fields

You can create the termination field manually or you can use one of the following wizards:

- **Create a termination field**
- **Expand termination field**
- **Duplicate wiring closet**

Prerequisites

You should have already created the:

- Termination-field configurations.
- Location of termination fields and work posts served by the termination fields.
- Duties
- Label rules
- Roles
- Termination-field device models.

Fields and links that must absolutely be populated

Termination fields - Fields and links that must absolutely be populated

Label of the field or link	SQL name of the field or link
Termination fields table (amTermField)	
Name	Name
Location	Location
Termination field devices	TermFieldDevices
User locations	UserLocs
Termination field devices table (amTermFldDevice)	
Role	CableRole
Label	Label
Horizontal position	sHoriz
#	sSequenceNumber
Vertical position	sVert

Creating termination fields manually

For each termination field in your network (main termination field or the one on each floor):

1. Display the list of termination fields (**Portfolio management/ Cable/ Termination fields**).
2. Create a record.
3. Create the termination-field slots using the **Termination field devices** link (**TermFieldDevices**).
4. Select the termination fields served by the termination field using the **User locations** link (**UserLocs**).

Create a termination field wizard

Use the Create a termination field wizard for the practical case 81

Functions performed by the wizard

The **Create termination field** wizard creates a termination field from a termination-field configuration.

Prerequisites

You should have already created the:

- Termination-field configurations
- Locations of the served termination fields and workstations.

Launching the wizard

Launching a wizard does not necessarily require that you be in a specific context.

To launch a wizard:

1. Display the list of actions (**Administration/ Actions** navigation menu).
2. Select the **Create a termination field** wizard.

Note: If this wizard does not appear in the list, select **Others...** at the end of the list.

Information used when using the wizard

Create a termination field wizard - description of fields to populate

Label displayed by the wizard	Explanations
Configure the termination field page	
Automatically name the termination field?	If you check this option, the wizard uses the TermFieldName calculated field to populate the Name field (Name) of the termination field.
Termination field name	This field populates the Name field (Name) of the termination field if you did not check the Automatically name the termination field option.
Location of the termination field	Select the termination field's location.
Termination-field configurations	Select the configuration that must be used as the model for the creation of the termination field.
Specify the options page	
Column	Indicate the number of termination field columns to create. This number must be inferior or equal to the Number of columns field (sHoriz) of the termination-field configuration. The value of this field is proposed by default.
Line	Indicate the number of termination-field rows to create. This number must be inferior or equal to the Number of rows field (sVert) of the termination-field configuration. The value of this field is proposed by default.
Auto-generate devices	If you check this option, the wizard creates a termination-field device for the termination-field slots.

Create a termination field wizard - description of fields to populate, continued

Label displayed by the wizard	Explanations
	The wizard uses the Model link (Model) for this, which is defined at the level of the termination-field configuration roles and devices.
Select the label rule for new devices	<p>Select the label rule to associate with the termination-field devices created by the wizard.</p> <p>This label rule populates the devices' Label rule (LabelRule) link. It also populates the devices' Label field (Label) in reference to this label rule.</p> <p>The label rule that the wizard proposed by default is the rule selected using the Label rule link (LabelRule) of the termination-field configuration.</p>
Select a project and a work order page	
Apply all changes to a project/work order:	<p>Check this option if you want to:</p> <ul style="list-style-type: none"> • Keep a trace of the operations performed in the database at the project level. • Describe the actions that you need to perform for (during) the work order.
Projects	The project in which is stored a trace of the operations performed in the database by the wizard.
Work orders	The work orders in which is described the actions that you must physically perform for the work order.
Device comments	<p>Enter the value to create for the Description field (Description) of the Assets included in projects table (amAstProjDesc).</p> <p>This applies to all the devices created by the wizard.</p>

Data created or modified by the wizard

The wizard creates:

- 1 termination field (**amTermField**).
- Termination field devices (**amTermFldDevice**).
- The assets corresponding to the termination-field devices (**amAsset**).
- Ports for the devices (**amPort**).
- Slots for the devices (**amSlot**).
- Pins/terminals for the devices (**amDevicePin**).

The wizard populates the following fields:

Create a termination field wizard - data created or modified by the wizard

Field label	SQL name of the field	Explanations
Termination field table (amTermField)		
Name	Name	The name that you selected using the wizard or the name determined by the TermFieldName calculated field.
Termination field configuration	TermFldConfig	The configuration selected using the wizard.
Location	Location	The location selected using the wizard.
Termination-field devices	TermFieldDevices	The wizard creates a device for each termination-field slot is created if you checked the Automatically generate the devices option in the wizard.
User locations	UserLocs	The locations selected with the wizard.
Termination field devices table (amTermFldDevice)		
#	sSequenceNumber	Defined according to the termination-field configuration parameters.
Horizontal position	sHoriz	Defined according to the termination-field configuration parameters.
Vertical position	sVert	Defined according to the termination-field configuration parameters.
Role	CableRole	The Role field (CableRole) of the termination-field configuration role corresponding to the position of the device in the termination field.
Device	Device	The device created by the wizard using the Model link (Model) of the termination-field configuration role corresponding to the position of the device in the termination field.
Assets table (amAsset)		
Model	Model	The Model (Model) of the termination-field configuration role corresponding to the position of the device in the termination field.
Label rule	LabelRule	Label rule selected using a wizard.
Label	Label	Label calculated by a wizard and based on the label rule of the device.

Create a termination field wizard - data created or modified by the wizard, continued

Field label	SQL name of the field	Explanations
Slots	AssetSlots	Slots of the device model.
Device pins/terminals	Pins	Asset Manager creates as many pins as there are defined by the Number of pins/terminals field (IPins) of the model.
Ports	Ports	Ports of the device model.
Ports table (amPort)		
Port #	PortNo	Same as for the model.
#	sSequenceNumber	Same as for the model.
Connection type	CabCnxType	Same as for the model.
Status	seCnxStatus	Value set to Available by the wizard.
Function	Duty	The Duty link (Duty) of the termination-field configuration duty defined for the device slot, of which the port is a part.
Slots table (amSlot)		
Name	Name	Same as for the model.
#	sSequenceNumber	Same as for the model.
Slot type	SlotType	Same as for the model.
Pins table (amDevicePin)		
Name	Name	Automatic sequential number.
#	sSequenceNumber	Automatic sequential number.
Status	seCnxStatus	Value set to Available by the wizard.

Viewing the result

The termination field created can be viewed by selecting it in one of the following manners:

- Option 1:
 - a. Display the list of termination fields (**Portfolio management/ Cable/ Termination fields**).
 - b. Select the termination field created by the wizard.
- Option 2:
 - a. Display the list of locations (**Organization management/ Organization/ Locations**).
 - b. Select the location of the termination field created by the wizard.

- c. Select the **Termination fields** tab.
- d. Select the termination field created by the wizard.

After having launched the wizard

The wizard does not populate the **Device** link (**Asset**) of the termination field device slots.

You therefore need to:

1. Display the list of termination fields (**Portfolio management/ Cable/ Termination fields**).
2. Select the termination field created by the wizard.
3. Select the **Devices** tab.
4. One by one, select the devices with their slots, and for each one of them:
 - a. Click the **Magnifier** (Windows client) or the device record (Web client).
 - b. Click the **Magnifier** to the right of the **Device** link (Windows client) or the device name (Web client).
 - c. Select the **Slots** tab.
 - d. One by one, select the slots to use, and for each one of them:
 - i. Click the **Magnifier** (Windows client) or the slot record (Web client).
 - ii. Populate the fields and links in the detail window.
 - iii. Click **Modify** (Windows client) or **Save** (Web client).
 - e. Windows client: Click **Modify**.
 - f. Windows client: Click **Close**.
5. Windows client: Click **Modify**.

Use the Create a termination field wizard for the practical case

We are going to create 1 termination-field column from the **Standard termination field** configuration. The second column will be added later using the **Expand termination field** wizard.

1. Display the list of actions (**Administration/ Actions**).
2. Select the **Create a termination field** wizard.

Note: If this wizard does not appear in the list, select **Others...** at the end of the list.

3. Enter the following information:

Label displayed by the wizard	Value to enter or select
Configure the termination field page	
Automatically name the termination field?	Do not check this option.
Termination field name	Floor's termination field
Location of the termination field	Cabled building/1st floor/1st floor's wiring closet
Termination-field configurations	Standard termination field
Specify the options page	
Column	1
Line	6
Auto-generate devices	Check this selection box.
Select the label rule for new devices	Practical case - Wallfield assets
Locations served by the new termination field	Cabled building/1st floor/Office 1
Select a project and a work order page	
Apply all changes to a project/work order?	Check this selection box.
Projects	Create a termination field
Work orders	Select the work order proposed by the wizard.
Device comments	Install the device in termination field.

4. Add the modules in the slots of the **ProCurve Switch 4000 M - 10 slots** devices:

Caution: This will be done later on, according to the procedure described in section [Creating the cable devices manually for the practical case](#) of this guide.

5. View the results created by the wizard by looking at the other tabs.

Expand termination field wizard

Using the Expand termination field wizard in the practical case87

Functions performed by the wizard

The **Expand termination field** wizard adds rows or columns to an existing termination field from a termination-field configuration.

Prerequisites

You should have already created:

- The workstation locations served by the termination fields.
- The termination field to expand.

The existing termination field must have less rows or columns than the termination-field configuration.

Launching the wizard

To access this wizard, you must select a record or a field (not a link) from the **Termination fields** table (**amTermField**):

1. Display the list of termination fields (**/Portfolio management/ Cable/ Termination fields**).
2. Select the termination field to expand from the list in the window.
3. Display the list of actions (**Administration/ Actions**).
4. Select the **Expand termination field** wizard.

Note: If this wizard does not appear in the list, select **Others...** at the end of the list

Information used when using the wizard

Expand termination field wizard - description of fields to populate

Label displayed by the wizard	Explanations
Specify the options page	
Column	Indicate the number of termination field columns to add. This number must be inferior or equal to the Number of columns field (sHoriz) of the termination-field configuration. The possible number of columns that you can add is proposed by default.

Expand termination field wizard - description of fields to populate, continued

Label displayed by the wizard	Explanations
Line	<p>Indicate the number of termination-field rows to add.</p> <p>This number must be inferior or equal to the Number of rows field (sVert) of the termination-field configuration.</p> <p>The possible number of rows that you can add is proposed by default.</p>
Auto-generate devices	<p>If you check this option, the wizard creates a termination-field device for the termination field slots.</p> <p>The wizard uses the Model link (Model) for this, which is defined at the level of the termination-field configuration roles and devices.</p>
Select the label rule for new devices	<p>Select the label rule to associate with the termination-field devices created by the wizard.</p> <p>This label rule populates the devices' Label rule link (LabelRule).</p> <p>The wizard also populates the devices' Label field (Label) in reference to this label rule.</p> <p>The label rule that the wizard proposed by default is the rule selected using the Label rule link (LabelRule) of the termination-field configuration.</p>
Select a project and a work order page	
Apply all changes to a project/work order?	<p>Check this option if you want to:</p> <ul style="list-style-type: none"> • Keep a trace of the operations performed in the database at the project level. • Describe the actions that you need to perform for (during) the work order.
Projects	The project in which is stored a trace of the operations performed in the database by the wizard.
Work orders	The work orders in which is described the actions that you must physically perform for the work order.
Device comments	Enter the value to create for the Description field (Description) of the Assets included in projects table (amAstProjDesc). This applies to the devices created while extending the termination field.

Data created or modified by the wizard

The wizard creates:

- Termination field devices (**amTermFldDevice**)
- The assets corresponding to the termination-field devices (**amAsset**).
- Ports for the devices (**amPort**).

- Slots for the devices (**amSlot**).
- Pins/terminals for the devices (**amDevicePin**).

The wizard populates the following fields:

Expand termination field wizard - data created or modified by the wizard

Field label	SQL name of the field	Explanations
Termination field table (amTermField)		
Termination-field devices	TermFieldDevices	The wizard creates a device for each termination-field slot is created if you checked the Automatically generate the devices option in the wizard.
Termination field devices table (amTermFldDevice)		
#	sSequenceNumber	Defined according to the termination-field configuration parameters.
Horizontal position	sHoriz	Defined according to the termination-field configuration parameters.
Vertical position	sVert	Defined according to the termination-field configuration parameters.
Role	CableRole	The Role field (CableRole) of the termination-field configuration role corresponding to the position of the device in the termination field.
Device	Device	The device created by the wizard using the Model link (Model) of the termination-field configuration role corresponding to the position of the device in the termination field.
Assets table (amAsset)		
Model	Model	The Model (Model) of the termination-field configuration role corresponding to the position of the device in the termination field.
Label rule	LabelRule	The label rule selected using a wizard.
Label	Label	The label is calculated by a wizard and is based on the label rule of the device.
Slots	AssetSlots	Slots of the device model.
Device pins/terminals	Pins	Asset Manager creates as many pins as there are defined by the Number of pins/terminals field (IPins) of the model.

Expand termination field wizard - data created or modified by the wizard, continued

Field label	SQL name of the field	Explanations
Ports	Ports	Ports of the device model.
Ports table (amPort)		
Port #	PortNo	Same as for the model.
#	sSequenceNumber	Same as for the model.
Connection type	CabCnxType	Same as for the model.
Status	seCnxStatus	Value set to Available by the wizard.
Function	Duty	The Duty link (Duty) of the termination-field configuration duty defined for the device slot, of which the port is a part.
Slots table (amSlot)		
Name	Name	Same as for the model.
#	sSequenceNumber	Same as for the model.
Slot type	SlotType	Same as for the model.
Pins table (amDevicePin)		
Name	Name	Automatic sequential number.
#	sSequenceNumber	Automatic sequential number.
Status	seCnxStatus	Value set to Available by the wizard.

Viewing the result

You can view the newly created termination field by selecting it in one of the following ways:

- Option 1:
 - a. Display the list of termination fields (**/Portfolio management/ Cable/ Termination fields**).
 - b. Select the termination field created by the wizard.
- Option 2:
 - a. Display the list of locations (**Organization management/ Organization/ Locations**).
 - b. Select the location of the termination field created by the wizard.
 - c. Select the **Termination fields** tab.
 - d. Select the termination field created by the wizard.

After having launched the wizard

The wizard does not populate the following links:

- **User locations** link (**UserLocs**) of the termination fields (if it concerns locations served by the termination field).
- **Device (Asset)** of the termination-field device slots.

You therefore need to:

1. Display the list of termination fields (**/Portfolio management/ Cable/ Termination fields**).
2. Select the termination field created by the wizard.
3. Select the **Served locations** tab.
4. One by one, add the locations served by the termination field.
5. Select the **Devices** tab.
6. One by one, select the devices with their slots, and for each one of them:
 - a. Click the **Magnifier** (Windows client) or the device record (Web client).
 - b. Click the **Magnifier** to the right of the **Device** link (Windows client) or the device name (Web client).
 - c. Select the **Slots** tab.
 - d. One by one, select the slots to use, and for each one of them:
 - i. Click the **Magnifier** (Windows client) or the slot record (Web client).
 - ii. Populate the fields and links in the detail window.
 - iii. Click **Modify** (Windows client) or **Save** (Web client).
 - e. Windows client: Click **Modify**.
 - f. Windows client: Click **Close**.
7. Windows client: Click **Modify**.

Using the Expand termination field wizard in the practical case

We are going to add 1 column to the termination field that was previously created from the **Standard termination field** configuration.

1. Display the list of termination fields (**/Portfolio management/ Cable/ Termination fields**).
2. Select the **Floor's termination field**.

3. Display the list of actions (**Administration/ Actions**).
4. Select the **Expand termination field** wizard.

Note: If this wizard does not appear in the list, select **Others...** at the end of the list

5. Enter the following information:

Label displayed by the wizard	Value to enter or select
Specify the options page	
Line	0
Column	1
Auto-generate devices	Check this selection box.
Select the label rule for new devices	Practical case - Wallfield assets
Select a project and a work order page	
Apply all changes to a project/work order?	Check this selection box.
Projects	Expand a termination field
Work orders	Select the work order proposed by the wizard.
Device comments	Install the device in termination field.

6. In a real-life situation, you would have to create the modules to insert in the slots of the **ProCurve Switch 4000 M - 10 slots**. However, in this practical case, it is not required.
7. Look at the results:
 - Display the list of termination fields (**/Portfolio management/ Cable/ Termination fields**).
 - Select the **Floor's termination field**.
 - Browse through the different tabs.

Duplicate wiring closet wizard

Functions performed by the wizard

The **Duplicate wiring closet** wizard duplicates the termination fields of a source location into a target location.

Note: This target location can already contain termination fields.

Prerequisites

You should have already created:

- The parent location of the new wiring closet.
- The wiring closet (location + termination fields) to duplicate.
- Locations of the served termination fields and workstations.

Launching the wizard

To access the wizard, you must select a record or a field (not a link) in the **Locations** table (**amLocation**):

1. Display the list of locations (**Organization management/ Organization/ Locations**).
2. Select any location from the list or select a field (not a link) in the **Locations** table.
3. Display the list of actions (**Administration/ Actions**).
4. Select the **Duplicate wiring closet** wizard.

Note: If this wizard does not appear in the list, select **Others...** at the end of the list

Information used when using the wizard

Duplicate wiring closet wizard - description of fields to populate

Label displayed by the wizard	Explanations
Select the source and destination locations page	
Destination location	Select the location where you want to duplicate the source location.
Name of the new wiring closet	<ul style="list-style-type: none"> • If you leave this field empty, the wizard will only duplicate the termination fields from the source location in the target location. • If you populate this field, the wizard creates a sub-location in the target location. The source termination fields are duplicated in this sub-location.
Duplicate the sub-locations	If you check this option, the sub-locations of the source location are also duplicated.
Rename the new termination field automatically	<ul style="list-style-type: none"> • If you check this option, the wizard uses the TermFieldName calculated field to populate the Name field (Name) of the termination field. • If you don't check this option, the wizard duplicates the names of the source termination fields.
Refresh new termination-field device's labels	<ul style="list-style-type: none"> • If you check this option, the wizard recalculates the devices' Label field (Label) in reference to the label rule, selected by the devices' Label rule link (LabelRule).

Duplicate wiring closet wizard - description of fields to populate, continued

Label displayed by the wizard	Explanations
	<ul style="list-style-type: none"> If you don't check this option, the wizard duplicates the labels of the source termination-field devices.
Select the termination field(s) to duplicate page	
Select the termination field(s) to duplicate	The wizard displays the termination fields of the selected, source location.
Select a project and a work order page	
Apply all changes to a project/work order?	Check this option if you want to: <ul style="list-style-type: none"> Keep a trace of the operations performed in the database at the project level. Describe the actions that you need to perform for (during) the work order.
Projects	The project in which is stored a trace of the operations performed in the database by the wizard.
Work orders	The work orders in which is described the actions that you must physically perform for the work order.
Device comments	Enter the value to create for the Description field (Description) of the Assets included in projects table (amAstProjDesc). This applies to all the devices created by the wizard.

Data created or modified by the wizard

The wizard creates:

- Locations (**amLocation**)
- Termination fields (**amTermField**)
- Termination field devices (**amTermFldDevice**)
- The assets corresponding to the termination-field devices (**amAsset**).
- Ports for the devices (**amPort**).
- Slots for the devices (**amSlot**).
- Pins/terminals for the devices (**amDevicePin**).

The wizard populates the following fields:

Duplicate wiring closet wizard - data created or modified by the wizard

Field label	SQL name of the field	Explanations
Locations table (amLocation)		
Name	Name	<ul style="list-style-type: none"> It is the value of the New wiring closet name field in the wizard, if you have populated it. Otherwise, it is the name of the target location that you have selected with the wizard.
Termination field table (amTermField)		
Termination-field devices	TermFieldDevices	The wizard creates a record for each device in the source termination fields selected using the wizard.
User locations	UserLocs	The locations selected with the wizard.
Termination field devices table (amTermFldDevice)		
#	sSequenceNumber	Same as for the source device.
Horizontal position	sHoriz	Same as for the source device.
Vertical position	sVert	Same as for the source device.
Role	CableRole	Same as for the source device.
Device	Device	The device created by the wizard using the Model link (Model) of the source device.
Assets table (amAsset)		
Model	Model	Same as for the source device.
Label rule	LabelRule	Same as for the source device.
Label	Label	<ul style="list-style-type: none"> If you checked the Refresh new termination field device's labels option in the wizard: It is the value calculated by the wizard in reference to this device's label rule. If you did not check this option: It is the same value as for the source device.
Slots	AssetSlots	Same as for the source device.
Device pins/terminals	Pins	Same as for the source device.

Duplicate wiring closet wizard - data created or modified by the wizard, continued

Field label	SQL name of the field	Explanations
Ports	Ports	Same as for the source device.
Ports table (amPort)		
Port #	PortNo	Same as for the port of the source device.
#	sSequenceNumber	Same as for the port of the source device.
Connection type	CabCnxType	Same as for the port of the source device.
Status	seCnxStatus	Same as for the port of the source device.
Function	Duty	Same as for the port of the source device.
Slots table (amSlot)		
Name	Name	Same as for the slot of the source device.
#	sSequenceNumber	Same as for the slot of the source device.
Slot type	SlotType	Same as for the slot of the source device.
Pins table (amDevicePin)		
Name	Name	Automatic sequential number.
#	sSequenceNumber	Automatic sequential number.
Status	seCnxStatus	Value set to Available by the wizard.

Viewing the result

You can view the newly created termination field by selecting it in one of the following ways:

- Option 1:
 - a. Display the list of termination fields (**Portfolio management/ Cable/ Termination fields**).
 - b. Select the termination field created by the wizard.
- Option 2:
 - a. Display the list of locations (**Organization management/ Organization/ Locations**).
 - b. Select the location of the termination field created by the wizard.
 - c. Select the **Termination fields** tab.
 - d. Select the termination field created by the wizard.

After having launched the wizard

The wizard does not populate the **Device** link (**Asset**) of the termination field device slots.

You therefore need to:

1. Display the list of termination fields (**Portfolio management/ Cable/ Termination fields**).
2. Select the termination field created by the wizard.
3. Select the **Devices** tab.
4. One by one, select the devices with their slots, and for each one of them:
 - a. Click the **Magnifier** or the device record (Web client).
 - b. Click the **Magnifier** to the right of the **Device** link (Windows client) or the device name (Web client).
 - c. Select the **Slots** tab.
 - d. One by one, select the slots to use, and for each one of them:
 - i. Click the **Magnifier** (Windows client) or the slot record (Web client).
 - ii. Populate the fields and links in the detail window.
 - iii. Click **Modify** (Windows client) or **Save** (Web client).
 - e. Windows client: Click **Modify**.
 - f. Windows client: Click **Close**.
5. Windows client: Click **Modify**.

Use the Duplicate wiring closet wizard for the practical case.

We are going to duplicate the termination field of the floor's wiring closet, which was previously created in the main wiring closet.

1. Display the list of locations (**Organization management/ Organization/ Locations**).
2. Select the location: **Cabled building/1st floor/1st floor wiring closet**.
3. Display the list of actions (**Administration/ Actions**).
4. Select the **Duplicate wiring closet** wizard.

Note: If this wizard does not appear in the list, select **Others...** at the end of the list.
5. Enter the following information:

Label displayed by the wizard	Value to enter or select
Select the source and destination locations page	
Destination location	Cabled building/2ndfloor/Main wiring closet
Name of the new wiring closet	Leave this field empty.
Duplicate the sub-locations	Do not check this option.
Rename the new termination field automatically	Check this selection box.
Refresh new termination field device's labels	Check this selection box.
Select the termination field(s) to duplicate page	
Select the termination field(s) to duplicate	Floor's termination field
Locations served by the new termination field (s)	Cabled building/1st floor/1st floor wiring closet
Select a project and a work order page	
Apply all changes to a project/work order?	Check this selection box.
Projects	Duplicate a wiring closet
Work orders	Select the work order proposed by the wizard.
Device comments	Install the device in termination field.

6. Select the termination field just created:
 - a. Display the list of locations (**Organization management/ Organization/ Locations**).
 - b. Select the **Cabled building/2nd floor/Main wiring closet** location.
 - c. Select the **Termination fields** tab.
 - d. Select the new termination field.
 - e. Click the **Magnifier** button.

7. Rename the termination field to **Main termination field**.

8. Add the modules in the slots of the **ProCurve Switch 4000 M - 10 slots** devices:

Caution: This will be done later on, according to the procedure described in section [Cable devices - manual creation](#).

9. Look at the results of the wizard's actions by browsing through the other tabs.

Chapter 6: Cable devices, cables and connections - manual creation

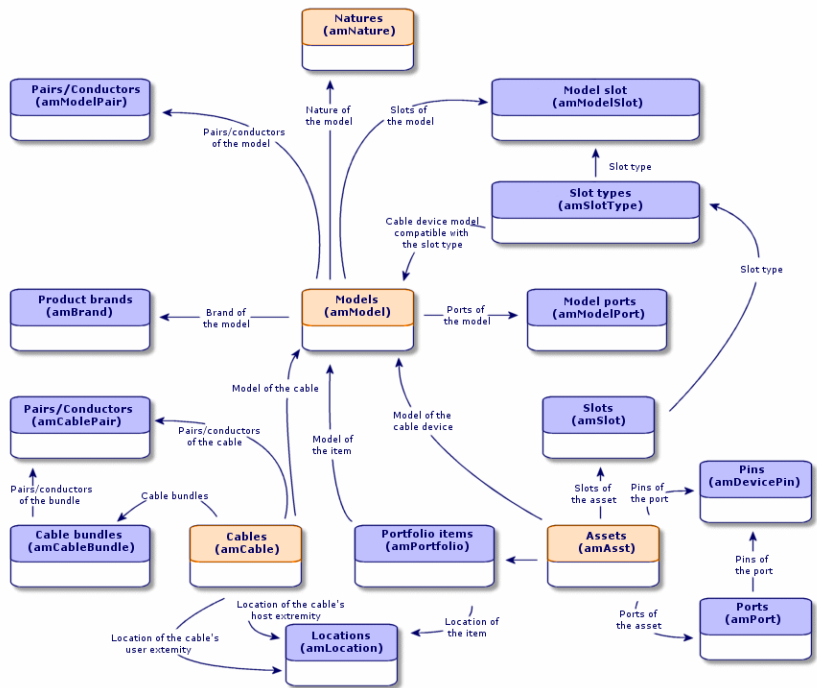
Cable devices - manual creation	96
Creating cable devices manually	99
Creating the cable devices manually for the practical case	103
Cables - manual creation	105
Creating cables manually	105
Creating the cables manually for the practical case	106
Connections - manual creation	107
Simplified data model	108
Creating connections manually	111
Creating the connections manually for the practical case	114

The cable devices, cables and cable links can be created manually or via the cabling wizards:

- Creating them manually requires more time, obviously, but it also allows you more control over the creation process.
- Creating them with wizards is more rapid, but you have less control.

Note: Let's recall that the cable devices are stored in the **Assets** table (**amAsset**), while the cables are stored in the **Cables** table (**amCable**). However, the models of these cable devices and cables come from the same table: **Models** (**amModel**).

Cables and cable devices - data model



Cable devices - manual creation

Definitions

Cable device

Port

Pin/ Terminal

Slot

Table names

- **Assets (amAsset)**
- **Ports (amPort)**
- **Pins (amDevicePin)**
- **Slots (amSlot)**

Access menu

Portfolio management/ Cable/ Devices

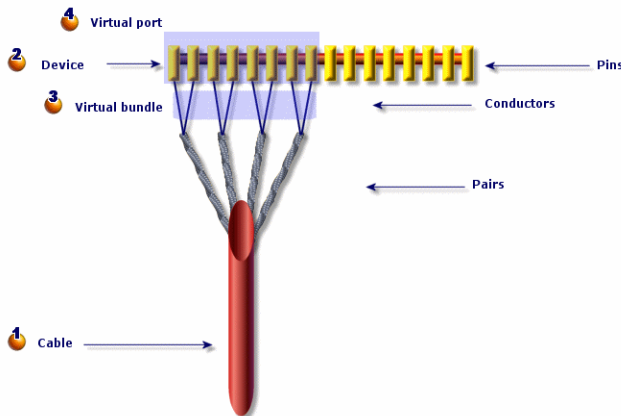
Letting Asset Manager create the ports and virtual bundles for pin connections

Certain cables/cable devices are composed of numerous bundles/pairs. It would be a tedious task to

declare each bundle/pair manually. The cabling wizards are capable of creating virtual bundles and ports when they are required for a cable link. The virtual bundles and ports are also automatically deleted when the cable links that use them are no longer used.

Note: The wizards use the topologies to identify the models of the cables/cable devices and the pairs/pins.

Ports and virtual bundles - representation



1 You start by creating a cable with its pairs, or you let the wizard create it.

2 Then, you create a cable device with its pins, or you can let the wizard create it.

3 The wizard creates a virtual bundle using the first available pairs.

4 The wizard creates a virtual port using the first available pins.

Single or double-sided devices

The cable devices can be single or double-sided. They are single-sided when the device ports or pins are all grouped together on one side. They are double-sided when the ports or pins are present on both sides of the device.

Example:

The patch panels are double-sided devices. The back side is frequently used to connect lateral or riser cables. The front side is often used to perform a patch to another patch panel.

When a device is double-sided, the cabling wizards can create more than one cable link on a given port of the device.

The single or double-sided feature of the cable devices is defined by the **Number of sides** field (**seDevSdType**) in the model.

The following diagram illustrates the different types of double-sided devices, depending on whether the connection is by pin or by port.

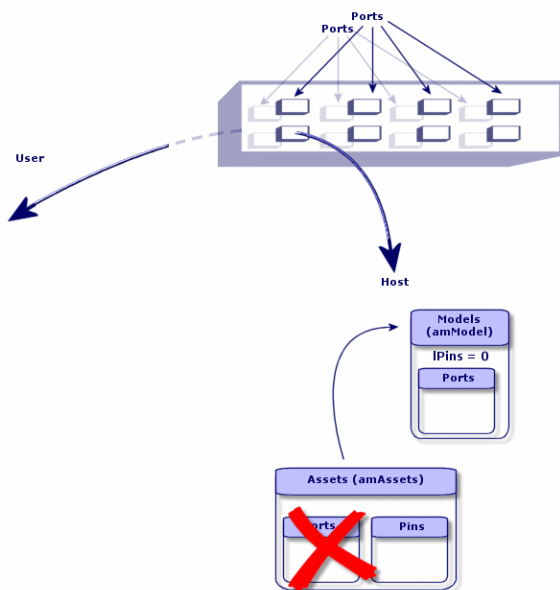
In each case, you will need to:

- Declare ports to the level of the device model.
- Populate the **Number of pins/terminals** field (**IPins**).

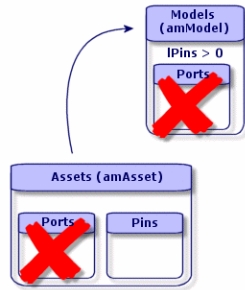
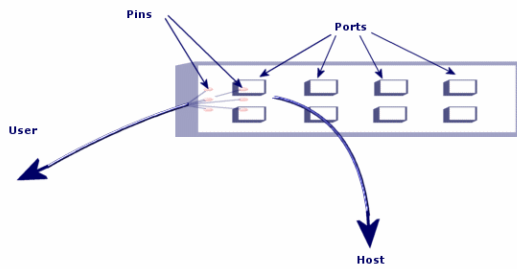
Note: It is very important to respect the directives of these diagrams if you want the wizards to correctly create the virtual ports

It is very important to respect the directives of these diagrams if you want the wizards to correctly create the virtual ports.

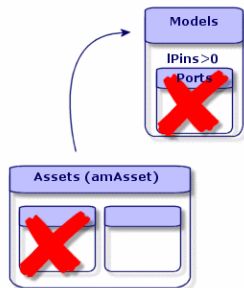
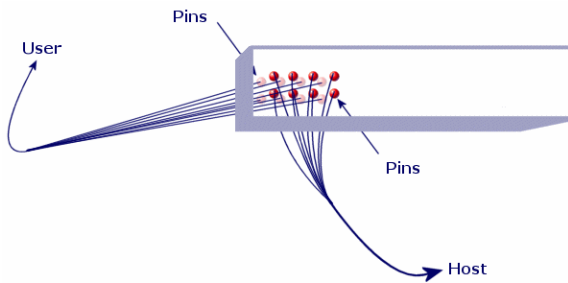
Double-sided devices (port/port) - representation



Double-sided devices (port/pins) - representation



Double-sided devices (pin/pin) - representation



Creating cable devices manually

If you created appropriate device models, you just need to:

1. Display the list of assets (**Portfolio management/ Cable/ Devices**).
2. Click **New**.
3. Populate the following fields and links:
 - **Model (Model)**
 - **Max no. connections (sMaxCnxCount)**
4. Click **Create** (Windows client) or **Save** (Web client).

The other fields and links to populate are automatically inherited from the model.

Prerequisites

You should have already created the:

- Cable device models (**amModel**)
- Label rules of the cable devices, ports, slots and pins/terminals (**amLabelRule**)
- Device types (**amItemizedList**)
- Cable connection types of the device ports (**amCabCnxType**)
- Duties of the device ports (**amCableDuty**)
- Slot types of the devices (**amSlotType**)
- Termination fields containing the devices (**amTermField**)
- Device locations (**amLocation**)
- Modules to insert in the slots (**amAsset**)

Fields and links that must absolutely be populated

Cable devices - Fields and links that must absolutely be populated

Label of the field or link	SQL name of the field or link	Remarks
Assets table (amAsset)		
Model	Model	The model must have a cable device nature.
Portfolio items	Assignment	
Status	seCnxStatus	
Max no. connections	sMaxCnxCount	If you want to receive a warning - during a manual creation - in case you create more ports than what is defined by this field.
Device	Pins	If the device is connected to the network by pins.

Cable devices - Fields and links that must absolutely be populated, continued

Label of the field or link	SQL name of the field or link	Remarks
pins/terminals		
Ports	Ports	If the device is connected to the network by ports.
Slots	AssetSlots	If the device must receive connection modules in its slots.
Label rule	LabelRule	
Label	Label	
Ports table (amPort)		
Port #	PortNo	If you create non-virtual ports.
#	sSequenceNumber	If you create non-virtual ports.
Connection type	CabCnxType	If you create non-virtual ports.
Function	Duty	If you create non-virtual ports.
Label rule	LabelRule	
Label	Label	
Status	seCnxStatus	
Port pins/terminals	DevPin	
Slots table (amSlot)		
Name	Name	If you create slots.
#	sSequenceNumber	If you create slots.
Slot type	SlotType	If you create slots.
Assigned device	AssignedAsset	If you create slots, and they are occupied.
Pins table (amDevicePin)		
Name	Name	If you create pins.
#	sSequenceNumber	If you create pins.
Port	Port	If you create pins.
Status	seCnxStatus	If you create pins.

Cable devices - Fields and links that must absolutely be populated, continued

Label of the field or link	SQL name of the field or link	Remarks
Label rule	LabelRule	If you create pins.
Label	Label	If you create pins.

Connection by ports or by pins[Connection by ports or by pins](#)**Double-sided devices**

When a device contains ports and/or pins on 2 sides (a patch panel, for example), you need to proceed in one of the following manners:

- If the 2 sides contain ports:
 - a. Create as many ports as there are on one side or the other of the device (this number should be the same on either side).
 - b. The ports thus created will appear in two cable links: a host-side link (corresponding to the port on one of the sides) and a user-side link (corresponding to the port on the other side).
- If the 2 sides contain pins:
 - a. Do not create any pins manually, unless you are not using cabling wizards to create cable links.
 - b. The cabling wizards that create cable links will create virtual ports according to your needs as you go. The virtual ports thus created will appear in two cable links: a host-side link (corresponding to the pins on one of the sides) and a user-side link (corresponding to the pins on the other side).
- If 1 side contains ports and the other contains pins:
 - a. Do not create any ports manually, unless you are not using cabling wizards to create cable links.
 - b. Create the cable links on the pin side before creating them on the port side. The cabling wizards that create the cable links to the pins will create virtual ports according to your needs as you go. Each virtual port thus appears in a first cable link.
 - c. Create the cable links on the port side. The cabling wizards that create the cable links to the ports will use the existing virtual ports. The virtual ports thus associated appear in a second cable link.

Slots

If the device contains slots destined to receive connection modules:

1. Create the connection modules in the **Assets** table (**amAsset**).
2. Create the **Slots** links (**AssetSlots**) by associating them to a connection module.

Creating the cable devices manually for the practical case

We are going to:

1. Create 2 modules.
2. Insert the first module in one of the switch slots of this floor's termination field.
3. Insert the second module in one of the switch slots of the main termination field.

To do this:

1. Create the 2 modules. For each module:
 - a. Display the list of assets (**Portfolio management/ Cable/ Cable devices**).
 - b. Click **New**.
 - c. Populate the following links and fields:

Field or link to populate	Value for record 1	Value for record 2
Model (Model)	Procurve 10/100 Base T - 8 ports	Procurve 10/100 Base T - 8 ports
Max no. connections (sMaxCnxCount)	8	8
Asset tag (AssetTag)	EXAMPLE005	EXAMPLE006

- d. Click **Create** (Windows client) or **Save** (Web client).
- e. Certain fields and links are automatically inherited from the model. You can view this by looking at the different tabs of the module that was just created.
2. Associate one of the modules to one of the switch slots of this floor's termination field:
 - a. Display the list of termination fields (**Portfolio management/ Cable/ Termination fields**).
 - b. Select the **Floor's termination field**.
 - c. Select the **Devices** tab.

- d. Select one of the devices whose **Model** field (**Model**) has the value **ProCurve Switch 4000 M - 10 slots**.
 - e. Click the **Magnifier** (Windows client) or the device record (Web client).
 - f. Click the **Magnifier** button to the right of the **Device** link (Windows client) or the device name (Web client).
 - g. Select the **Slots** tab.
 - h. Select one of the slots.
 - i. Click the **Magnifier** (Windows client) or the slot record (Web client).
 - ii. Select the **Assigned device** field (**AssignedAsset**).
 - iii. Select one of the **Hewlett Packard Procurve 10/100 Base T - 8 ports** devices that you just created.
 - iv. Click **Modify** (Windows client) or the **Save** (Web client).
 - i. Windows client: Click **Modify**.
 - j. Windows client: Click **Close**.
3. Associate the other module with one of the switch slots of the main termination field:
- a. Display the list of termination fields (**Portfolio management/ Cable/ Termination fields**).
 - b. Select the **Main termination field**.
 - c. Select the **Devices** tab.
 - d. Select one of the devices whose **Model** field (**Model**) is set to **ProCurve Switch 4000 M - 10 slots**.
 - e. Click the **Magnifier** (Windows client) or the device record (Web client).
 - f. Click the **Magnifier** button to the right of the **Device** link (Windows client) or the device name (Web client).
 - g. Select the **Slots** tab.
 - h. Select one of the slots.
 - i. Click the **Magnifier** (Windows client) or the slot record (Web client).
 - ii. Select the **Assigned device** field (**AssignedAsset**).
 - iii. Select one of the **Hewlett Packard Procurve 10/100 Base T - 8 ports** devices that you just created.
 - iv. Click **Modify** (Windows client) or the **Save** (Web client).
 - i. Windows client: Click **Modify**.
 - j. Windows client: Click **Close**.

Cables - manual creation

Definitions

[Cable](#)

[Pair/conductor](#)

[Bundle](#)

Table names

- **Cables** (`amCable`)
- **Pairs/Conductors** (`amCablePair`)
- **Cable bundles** (`amCableBundle`)

Access menu

Portfolio management/Cable/ Cables

Creating cables manually

If you created appropriate cable models, you just need to:

1. Display the list of cables (**Portfolio management/Cable/ Cables**).
2. Click **New**.
3. Populate the **Model** link (**Model**).
4. Click **Create** (Windows client) or **Save** (Web client).

The other fields and links to populate are automatically inherited from the model.

Tip: It is not necessary to create bundles manually. The cabling wizards can create virtual bundles for you.

[Cable devices - manual creation](#)

Prerequisites

You should have already created the:

- Cable models (**amModel**)
- Label rules of the cable devices, pairs/conductors and bundles (**amLabelRule**)
- Cable types (**amItemizedList**)
- Cable pair/conductor types (**CabPairType**)
- Duties of the cable bundles (**amCableDuty**)
- Locations of the host and user cables (**amLocation**)

Fields and links that must absolutely be populated

Cables - Fields and links that must absolutely be populated

Label of the field or link	SQL name of the field or link	Remarks
Cables table (amCable)		
Model	Model	The model must have a cable nature.
Label rule	LabelRule	
Label	Label	
User location	UserLoc	
Host location	HostLoc	
Role	CableRole	
Status	seCnxStatus	
Pairs/Conductors	Pairs	
Pairs/Conductors table (amModelPair)		
Name	Name	
#	sSequenceNumber	
Pair/Conductor type	CabPairType	
Color code entry	ColorCodeDet	If you selected a color code at the level of the cable model.

Creating the cables manually for the practical case

We are going to create an FTP cable - Category 5 - 4 twisted pairs with a bundle:

1. Display the list of cables (**Portfolio management/Cable/ Cables**).
2. Click **New**.
3. Populate the following fields and links:

Field or link to populate	Value
Model (Model)	FTP - Category 5 - 4 twisted pairs
Code (Code)	Example001

4. Click **Create** (Windows client) or **Save** (Web client).
5. Certain fields and links are automatically inherited from the model. You can view this by looking at the different tabs of the cable that was just created.
6. Select the **Bundles** tab.
7. Click **+** (Windows client) or **Add** (Web client).
8. Populate the following fields and links:

Field or link to populate	Value
# (sSequenceNumber)	1
Name (Name)	1
Duty (Duty)	Data
Status (seCnxStatus)	Available

9. Click **Add**.
10. Select the bundle from the list.
11. Click the **Magnifier**.
12. Select the **Pairs/conductors** tab.
13. Add the 4 pairs of this cable to the bundle.
14. Click **Create** (Windows client) or **Save** (Web client).

Connections - manual creation

Definitions

[Cable link](#)

[Trace output](#)[Trace](#)[Cross connection](#)[Host](#)[User](#)**Table names**

- **Cable links** (`amCableLink`)
- **Trace outputs** (`amTraceOutput`)
- **Trace histories** (`amTraceHistory`)
- **Trace operations** (`amTraceOp`)

Access menu

Portfolio management/ Cable/ Traces

Administration/List of screens

Simplified data model

Relationship between the cable links, device ports and cable bundles

Principals

The connections are made between cable bundles and ports of cable devices. These connections are represented by cable links. A cable link corresponds either to a port or a bundle, but not to both at the same time. Using the hierarchic link between two cable links, you can indicate that a port or a bundle is connected to a port or a bundle. There is thus no direct link between ports and bundles. Using the hierarchic links (which indicate that a such a cable link is a parent link or sub-link of another cable link), you can create a trace. The parent cable links must be on the "host" side, in other words, the most important side of the termination field.

Trace example

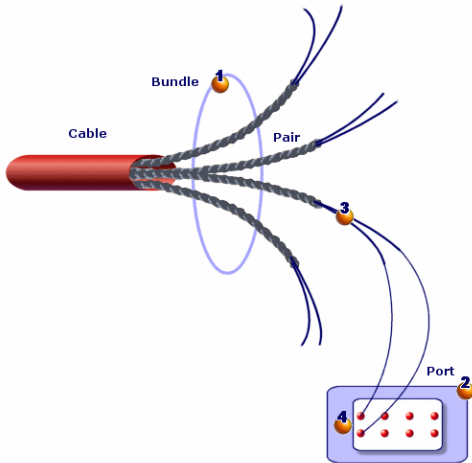
port -> bundle -> port

Correspondence between your network and the Asset Manager database

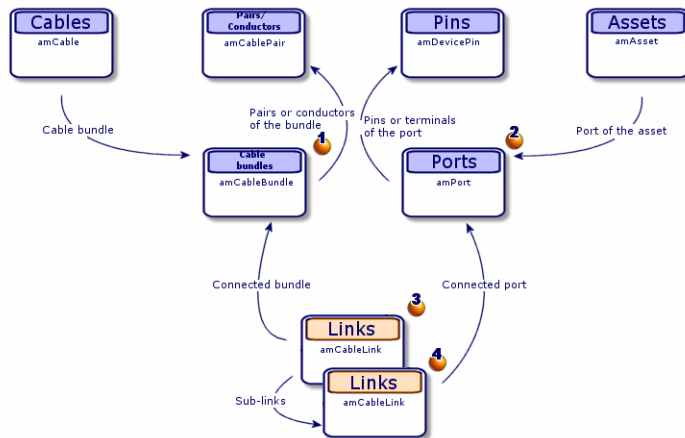
The following diagrams illustrate the way that we represent a connection between a device port (a wall outlet, for example) and a cable bundle (a lateral cable, for example).

- 1 "Host" bundle to connect to "user" port.
- 2 "User" port to connect to "host" bundle.
- 3 "Host" cable link concerning the bundle. This link is the parent of the "user" link.
- 4 "User" cable link concerning the port. This link is the sub-link of the "host" link.

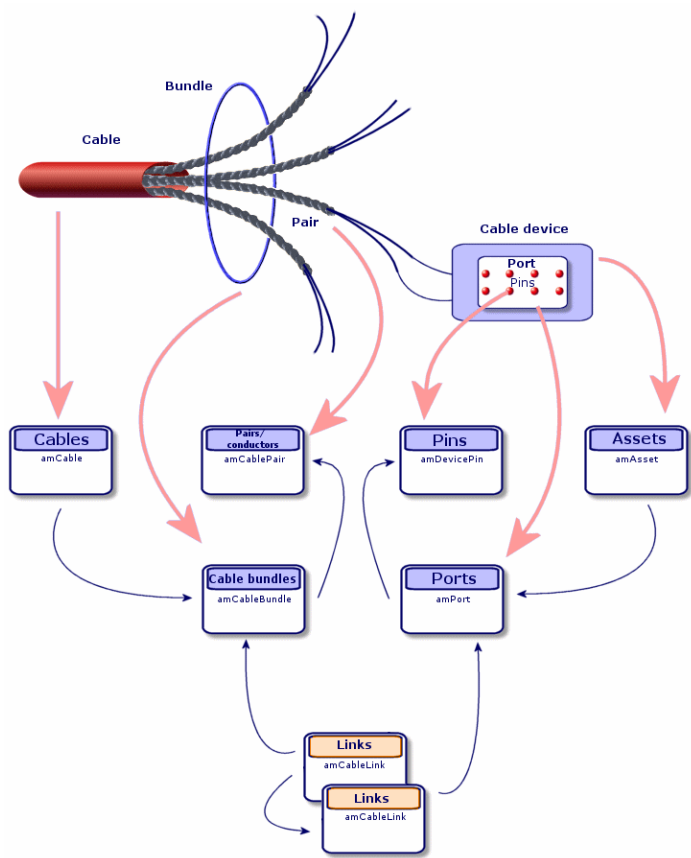
Cable link - representation of implicated components



Cable links - simple data model

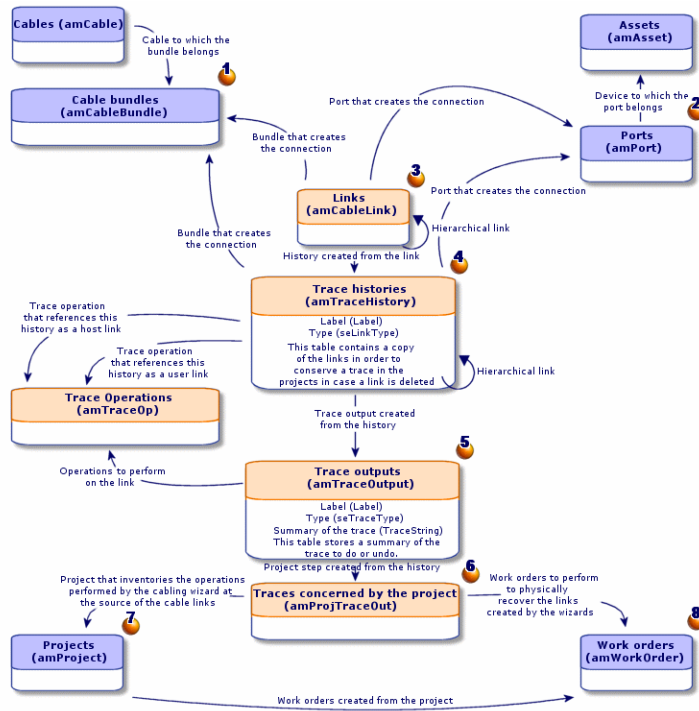


Cable links - correspondence between the cable link to represent and the database



Tables used in the complete description of the connections

Cable links - detailed data model



Comments on the diagram

This diagram enables you to understand how the numerous tables, used in the description of the connections, work together.

- 1 Connected bundle.
- 2 Connected port.
- 3 Cable links concerning either a bundle or a port.
- 4 Copy of the cable link.
- 5 Description of the connection.
- 6 Intermediary table between projects/work orders and trace outputs.
- 7 Project enabling you to find the connection detail.
- 8 Work order that enables you to manage the implementation of the physical connection.

Creating connections manually

The following tables were not designed to be manually populated:

- **amCableLink**
- **amTraceOutput**
- **amTraceHistory**
- **Trace operations**

The explanations that we provide here are intended for those wanting to know more about how these tables function.

Before creating a connection manually:

1. Define the traces to represent.
Example: wall outlet->lateral cable->termination field
In general, a trace is composed of 2 cable devices linked by a cable.
2. Determine which direction you want to follow: host->user or user->host.
3. Begin with the very last point.
Examples:
 - a. If you create the cable links in the user->host direction, you will begin with a termination-field device.
 - b. If you create the cable links in the host->user direction, you will begin with a user wall outlet.
4. Create one cable link per connection point.
In general: 2 device links and 1 cable link.
Use the **Parent** link to connect the trace components.

For each trace to create:

1. Display the list of traces (**Portfolio management/ Cable/ Traces**).
2. Click **New**.
3. Populate the fields and links in the link window.
4. Display the list of screens (**Administration/ List of screens**).
5. Select the **Trace outputs** table (**amTraceOutput**).
6. Click **New**.
7. Populate the fields and links that are not inside the tabs of the detail window.
8. Click **+** (Windows client) or **Add** (Web client) in the following tabs:
 - a. Trace history: This creates a record in the **Trace histories** table (**amTraceHistory**). Simply copy the information from the cable link detail and paste it here.

- b. Operation: This creates a record in the **Trace operations** table (**amTraceOp**).

Prerequisites

You should have already created:

- The cable devices (**amAsset**) to connect and their ports (**amPort**).
- The cables (**amCable**) to connect and their bundles (**amCableBundle**).
- The label rules for the cable links (**amLabelRule**).
- The cable duties (**amCableDuty**).

Fields and links that must absolutely be populated

Connections - Fields and links that must absolutely be populated

Label of the field or link	SQL name of the field or link	Remarks
Cable links table (amCableLink)		
Name	Name	
Link type	seLinkType	
Parent link	Parent	
Label rule	LabelRule	
Label	Label	
Function	Duty	
Cable	Cable	If the cable link concerns a cable.
Bundle	Bundle	If the cable link concerns a cable.
Device	Device	If the cable link concerns a cable device.
Port	Port	If the cable link concerns a cable device.
Trace outputs table (amTraceOutput)		
Type	seTraceType	
Function	Duty	
Label	ModifiedLinkLabel	
Summary of the trace	TraceString	

Connections - Fields and links that must absolutely be populated, continued

Label of the field or link	SQL name of the field or link	Remarks
Trace history	TraceHist	
Trace operations	TraceOps	
Trace histories table (amTraceHistory)		
Name	Name	
Type	seLinkType	
Parent history	Parent	
Label	Label	
Cable	Cable	
Bundle	Bundle	
Device	Device	
Port	Port	
Link	Link	
Trace operations table (amTraceOp)		
Title	Label	
Host trace history	HostTraceHist	
User trace history	UserTraceHist	

Creating the connections manually for the practical case

We are going to create a trace composed of the following cable links:

secondary termination-field device -> 4 twisted pairs -> principal termination-field device

The direction of such a trace is user to host. We will thus begin by creating the host-side cable link.

Creating the cable links

1. Display the list of traces (**Portfolio management/ Cable/ Links**).
2. For each cable link, create a record and populate the following fields and links:

Field or link to populate	Value for record 1	Value for record 2	Value for record 3
Designation (Name)	Example002	Example003	Example004
Cable link type (seLinkType)	Device	Cable	Device
Parent link (Parent)	Do not populate.	Device (Example002)	Cable (Example003)
Label rule (LabelRule)	Practical case - Port of a termination-field patch panel link	Practical case - Link - Sequentially, by pairs	Practical case - Port of a termination-field patch panel link
Label (Label)	Do not enter any values; accept the proposed default value.	Do not enter any values; accept the proposed default value.	Do not enter any values; accept the proposed default value.
Duty (Duty)	Data	Data	Data
Cable (Cable)	Field not available.	Corel FTP - Category 5 - 4 twisted pairs (EXAMPLE001)	Field not available.
Bundle (Bundle)	Field not available.	1 (EXAMPLE001)	Field not available.
Device (Device)	Hewlett Packard Procurve 10/100 Base T - 8 ports (EXAMPLE006)	Field not available.	Hewlett Packard Procurve 10/100 Base T - 8 ports (EXAMPLE005)
Port (Port)	1 (EXAMPLE006)	Field not available.	1 (EXAMPLE005)

Creating the trace history

1. Display the list of screens (**Administration/ List of screens**).
2. Select the **Trace outputs** table (**amTraceOutput**).
3. Create a record and populate the following fields and links:

Field or link to populate	Value
Type (seTraceType)	Connect
Duty (Duty)	Data
Label (ModifiedLinkLabel)	'Data' riser run from location '/Cabled building/2nd floor/Main wiring closet' to '/Cabled building/1st floor/1st floor wiring closet/'
Trace summary (TraceString)	Hewlett Packard Procurve 10/100 Base T - 8 ports (EXAMPLE005) - (1) <CONNECTER> Corel FTP - Category 5 - 4 twisted pairs (EXAMPLE001) - (1) <CONNECTER> Hewlett Packard Procurve 10/100 Base T - 8 ports (EXAMPLE006) - (2)

Creating the trace histories for the trace output

1. Display the list of screens (**Administration/ List of screens**).
2. Select the **Trace histories** table (**amTraceHistory**).
3. Create a new record in the **Trace histories** table (**amTraceHistory**) and populate the following fields and links:

Note: Most of the information is duplicated from the cable link corresponding to the history.

Field or link to populate	Value for record 1	Value for record 2	Value for record 3
Designation (Name)	Example002	Example003	Example004
Type (seLinkType)	Device	Cable	Device
Parent history (Parent)	Do not populate.	Device (Example002)	Cable (Example003)
Label (Label)	Same as for links	Same as for links	Same as for links
Cable (Cable)	Field not available.	Corel FTP - Category 5 - 4 twisted pairs	Field not available.

Field or link to populate	Value for record 1	Value for record 2	Value for record 3
		(EXAMPLE001)	
Bundle (Bundle)	Field not available.	1 (EXAMPLE001)	Field not available.
Device (Device)	Hewlett Packard Procurve 10/100 Base T - 8 ports (EXAMPLE006)	Field not available.	Hewlett Packard Procurve 10/100 Base T - 8 ports (EXAMPLE005)
Port (Port)	1 (EXAMPLE006)	Field not available.	1 (EXAMPLE005)
Cable link (Link)	Device (Example002)	Cable (Example003)	Device (Example004)

Creating the trace operations for the trace outputs

There are two operations to perform:

- Connecting the main termination field to the cable.
 - Connecting the cable to the secondary termination field.
1. Display the list of screens (**Administration/ List of screens**).
 2. Select the **Trace operations** table (**amTraceOp**).
 3. Create a new record for each operation in the **Trace operations** table (**amTraceOp**) and populate the following fields and links:

Field or link to populate	Value for record 1	Value for record 3
Label (Label)	Connect	Connect
Host trace history (HostTraceHist)	Hewlett Packard Procurve 10/100 Base T - 8 ports (EXAMPLE006)	Corel FTP - Category 5 - 4 twisted pairs (EXAMPLE001)
User trace history (UserTraceHist)	Corel FTP - Category 5 - 4 twisted pairs (EXAMPLE001)	Hewlett Packard Procurve 10/100 Base T - 8 ports (EXAMPLE005)

Chapter 7: Connections - creation with the wizards

Run riser cables wizard	118
Use the Run riser cables wizard	119
Use the Run riser cables wizard for the practical case	130
Run lateral cables wizard	133
Use the Run lateral cables wizard	133
Use the Run lateral cables wizard for the practical case.	141
Cross connect bundles wizard	142
Use the Cross connect bundles wizard	143
Use the Cross connect bundles wizard for the practical case.	150

Asset Manager is provided with numerous cabling wizards that automate the creation of connections.

This chapter explains how they work.

Note: The cabling wizards do not populate the following tables unless you select a project and a work order at the end of the wizard's execution:

- **Trace outputs** (`amTraceOutput`)
- **Trace histories** (`amTraceHistory`)
- **Trace operations** (`amTraceOp`)

Run riser cables wizard

Use the Run riser cables wizard	119
Use the Run riser cables wizard for the practical case	130

Functions performed by the wizard

This wizard connects two termination fields using a riser cable.

Prerequisites

You should have already created:

- The host termination field.
- The devices of the host termination field to which the riser cable will connect.

Caution: You must respect different conditions according to the connection to the device and whether it is made by ports or by pins.

Connection by ports or by pins

- The user termination field.
- The devices of the user termination field to which the riser cable will connect.

Caution: You must respect different conditions according to the connection to the device and whether it is made by ports or by pins.

Connection by ports or by pins

- The connection types you will use to connect the cable to the host and user devices.
- The label rules you will use to label the cable, the host links and the user links.
- The riser cable model to create.
- A project and a work order, if you want to store the trace of the connections carried out.

Use the Run riser cables wizard

Launching the wizard

This wizard does not require any particular context:

1. Display the list of actions (**Tools/ Actions**).
2. Select the **Run riser cables** wizard.

Note: If this wizard does not appear in the list, select **Others...** at the end of the list

Information used when using the wizard

Caution: Certain labels in the following table are not displayed by the wizard unless you select the appropriate option.

Run riser cables wizard - description of fields to populate

Label displayed by the wizard	Explanations
Select a host termination field page	

Run riser cables wizard - description of fields to populate, continued

Label displayed by the wizard	Explanations
Locations	Select the location of the host termination field that you want to connect to the riser cable.
Host termination field	Select the host termination field to connect to the riser cable.
Do you want to select the starting position?	<ul style="list-style-type: none"> • If you check this option, the wizard will display the list of positions of the termination field with its roles and the termination-field device. • If you don't check this option, the wizard automatically searches for the first available termination-field device having a port that is: <ul style="list-style-type: none"> ◦ Available ◦ Associated with a connection type that you will select on another page.
Termination-field devices	Select the termination-field device from which you will connect the riser cable.
Select the host termination field connectors and a label rule page	
Cable connection types	<p>Select the connection type enabling you to connect the riser cable to the termination field.</p> <p>The wizards use the connection type, which you choose, as part of their criteria to select a port to create a cable link.</p> <p>If the connection type is by pin and the wizard created a virtual port to create a cable link, the connection type selected is associated with this virtual port.</p>
Select the label rule for the links	You use this label rule to populate the Label field (Label) of the link created at the level of the host-termination-field device.
Do you want to search (not create) for ports of this pin mode?	<p>If you check this option, the wizard only looks for ports:</p> <ul style="list-style-type: none"> • That already exist (the wizard does not create virtual ports). • Associated with a connection type that you will select with the wizard.
Map consecutive pins to virtual port for pin-based devices (default is next available pin)?	<ul style="list-style-type: none"> • If you check this option, the wizard only uses the pins with consecutive numbers to create virtual ports. • If you don't check this option, the wizard selects the first available pins without requiring them to have consecutive numbers.
Type of cable connection for odd pins	This part of the wizard handles pins that do not exist in numbers

Run riser cables wizard - description of fields to populate, continued

Label displayed by the wizard	Explanations
	<p>large enough to create a connection after having associated all the other pins to virtual ports.</p> <p>These pins can, however, be used in other ways. Indicate in this field what type of connection to use for the remaining pins.</p>
Type of duty for odd pins connector	Select the duty assigned to the remaining pins.
Do you want to select the starting port?	<p>Select this option if you want to specify from which number the wizard should associate a port to a bundle of the riser cable to create a link.</p> <p>This refers to a port of the termination-field device that was selected with the wizard on the previous page.</p>
Starting port	<p>This port specifies from which number the wizard can associate a port to a bundle of the riser cable to create a link.</p> <p>This refers to a port of the termination-field device that was selected with the wizard on the previous page.</p>
Do you want to select the starting pin?	<p>Select this option if you want to specify from which pin number the wizard can start using pins to create a virtual port.</p> <p>This port will be associated to a riser-cable bundle to create a link.</p>
Starting pin	<p>This pin determines from which pin number the wizard can start using pins to create a virtual port.</p> <p>This port will be associated to a riser-cable bundle to create a link.</p>
Select a user termination field page	
Locations	<p>Select the location of the user termination field to connect to the riser cable.</p> <p>Only the locations served by the host termination field are listed.</p>
User termination field	Select the user termination field to connect to the riser cable.
Do you want to select a starting position?	<ul style="list-style-type: none"> • If you check this option, the wizard will display the list of positions of the termination field with its roles and the termination-field device. • If you don't check this option, the wizard automatically searches for the first available termination-field device having a port that is: <ul style="list-style-type: none"> ◦ Available ◦ Associated with a connection type that you will select on

Run riser cables wizard - description of fields to populate, continued

Label displayed by the wizard	Explanations
	another page.
Termination-field devices	Select the termination-field device to which you will connect the riser cable.
Select the user termination field connectors and a label rule page	
Cable connection types	<p>Select the connection type enabling you to connect the riser cable to the termination field.</p> <p>The wizards use the connection type, which you choose, as part of their criteria to select a port to create a cable link.</p> <p>If the connection type is by pin and the wizard created a virtual port to create a cable link, the connection type selected is associated with this virtual port.</p>
Select the label rule for the links	You use this label rule to populate the Label field (Label) of the link created at the level of the user-termination-field device.
Do you want to search (not create) for ports of this pin mode?	<p>If you check this option, the wizard only looks for ports:</p> <ul style="list-style-type: none"> • That already exist (the wizard does not create virtual ports). • Associated with a connection type that you will select with the wizard.
Map consecutive pins to virtual port for pin-based devices (default is next available pin)?	<ul style="list-style-type: none"> • If you check this option, the wizard only uses the pins with consecutive numbers to create virtual ports. • If you don't check this option, the wizard selects the first available pins without requiring them to have consecutive numbers.
Type of cable connection for odd pins	<p>This part of the wizard handles pins that do not exist in numbers large enough to create a connection after having associated all the other pins to virtual ports.</p> <p>These pins can, however, be used in other ways. Indicate in this field what type of connection to use for the remaining pins.</p>
Type of duty for odd pins connector	Select the duty assigned to the remaining pins.
Do you want to select an starting port?	<p>Select this option if you want to specify from which number the wizard should associate a port to a bundle of the riser cable to create a link.</p> <p>This refers to a port of the termination-field device that was selected with the wizard on the previous page.</p>

Run riser cables wizard - description of fields to populate, continued

Label displayed by the wizard	Explanations
Starting port	<p>This port specifies from which number the wizard can associate a port to a bundle of the riser cable to create a link.</p> <p>This refers to a port of the termination-field device that was selected with the wizard on the previous page.</p>
Do you want to select a starting pin?	<p>Select this option if you want to specify from which pin number the wizard can start using pins to create a virtual port.</p> <p>This port will be associated to a riser-cable bundle to create a link.</p>
Starting pin	<p>This pin determines from which pin number the wizard can start using pins to create a virtual port.</p> <p>This port will be associated to a riser-cable bundle to create a link.</p>
Select a riser cable page	
Cable role	<p>The selected role is used to:</p> <ul style="list-style-type: none"> • Populate the Role field (CableRole) of a cable created by the wizard • Select a device to connect • Filters the existing cables that the wizard displays.
Do you want to use an existing cable?	<ul style="list-style-type: none"> • If you check this option, the wizard asks you to select an existing cable. • If you do not check this option, the wizard asks you to select a riser-cable model to create the cable itself.
Number of pairs to be connected:	Define how many cable pairs must be connected to the termination fields by the wizard.
Do you want to select a starting pair?	<ul style="list-style-type: none"> • If you check this option, you can specify from which number the wizard can associate an available pair to a bundle of the riser cable to create a link. • If you do not check this option, the wizard selects the first available pairs.
Starting pairs for the cable model	Select the starting pair.
Starting pairs for the cable	Select the starting pair.
Select label rule for riser page	
Do you want to use a label rule for the cable label?	<ul style="list-style-type: none"> • If you check this option, the wizard uses a label rule to populate the Label field (Label) of the cable.

Run riser cables wizard - description of fields to populate, continued

Label displayed by the wizard	Explanations
	<ul style="list-style-type: none"> If you check this option, you can directly enter the label using the wizard.
Select the label rule for the cable	You use this label rule to populate the Label field (Label) of the cable.
Duty of the new cable	<p>The selected duty is:</p> <ul style="list-style-type: none"> Part of the criteria the wizards use to select ports to connect. Associated to the ports and virtual bundles created by the wizard to create the links.
Number of pairs in a bundle	<p>Indicates the number of pairs to associated to each virtual bundle created by the wizard.</p> <p>You must be able to divide the total number of pairs to be connected, which you defined in the previous page, by this number.</p> <p>The default value is calculated in the following manner:</p> <ol style="list-style-type: none"> The wizard subtracts the connection type with the least numbers of pins (from the host and user connection types selected with the wizard). It then divides the number of pins of the connection type that was subtracted by the number of pairs/conductors of the pair/conductor type of the cable selected with the wizard.
Select the label rule for the links	You use this label rule to populate the Label field (Label) of the cable link created from the cable.
Select a project and a work order page	
Cable comments	Value for the Description field (Description) of the Cables concerned by the project table (amProjCable).
Connection comments	Value for the Description field (Description) of the Traces concerned by the project table (amProjTraceOut).
Connection termination field for the work order	Value for the Label field (Label) of the Trace operations table (amTraceOp).

Data created or modified by the wizard

The wizard creates, if appropriate, the following items:

- A cable (**amCable**)
- Pairs/conductors for this cable (**amCablePair**)

- Bundles (**amCableBundle**)
- Ports (**amPort**)
- Cable links (**amCableLink**)
- Trace histories (**amTraceHistory**)
- Trace outputs (**amTraceOutput**)
- Trace operations (**amTraceOp**)

The wizard populates the following fields:

Run riser cables wizard - created or modified data

Run riser cables wizard - created or modified data

Field label	SQL name of the field	Explanations
Assets table (amAsset)		
Ports	Ports	The wizard creates virtual ports connected to bundles of the riser cable if it is necessary.
Ports table (amPort)		
Port #	PortNo	This field is only populated for the virtual ports created by the wizard. Its value is the number after the last port number existing for the device.
#	sSequenceNumber	This field is only populated for the virtual ports created by the wizard. Its value is the number after the last port number existing for the device.
Connection type	CabCnxType	This field is only populated for the virtual ports created by the wizard. Connection type selected using the wizard for the host or user termination field.
Function	Duty	This field is only populated for the virtual ports created by the wizard. Duty defined by the wizard for the cable.
Status	seCnxStatus	This field is only populated for the virtual ports created by the wizard. Its value is set to Available by the wizard.

Run riser cables wizard - created or modified data, continued

Field label	SQL name of the field	Explanations
Virtual port	bVirtual	This field is only populated for the virtual ports created by the wizard. Its value is set to Yes .
Port pins/terminals	DevPin	Pins selected by the wizard to create a cable link.
Cables table (amCable)		
Model	Model	Cable model selected using the wizard.
Label rule	LabelRule	This field is only modified for the cables created by the wizard. The label rule selected using a wizard for the cable.
Label	Label	This field is only modified for the cables created by the wizard. The label is calculated according to the label rule.
User location	UserLoc	This field is only modified for the cables created by the wizard. Location of the user termination field selected using the wizard.
Host location	HostLoc	This field is only modified for the cables created by the wizard. Location of the host termination field selected using the wizard.
Role	CableRole	Role selected using the wizard.
Status	seCnxStatus	This field is only modified for the cables created by the wizard. Its value is set to Available by the wizard.
Pairs/Conductors	Pairs	This field is only modified for the cables created by the wizard. Pairs/conductors of the model.
Bundles	Bundles	Virtual bundles created by the wizard if it is necessary.
Pairs/Conductors table (amCablePair)		
Bundle	Bundle	Bundle with which the pair/conductor is associated to create a cable link.

Run riser cables wizard - created or modified data, continued

Field label	SQL name of the field	Explanations
Pins table (amDevicePin)		
Port	Port	Port with which the pin/terminal is associated to create a cable link.
Cable bundle table (amCableBundle)		
#	sSequenceNumber	This field is only populated for the virtual bundles created by the wizard. Its value is the number after the last bundle number existing for the device.
Name	Name	This field is only populated for the virtual bundles created by the wizard. Its value is the number after the last bundle number existing for the device.
Function	Duty	This field is only populated for the virtual bundles created by the wizard. Duty defined by the wizard for the cable.
Status	seCnxStatus	This field is only populated for the virtual bundles created by the wizard. Its value is set to Available by the wizard.
Virtual bundle	bVirtual	This field is only populated for the virtual bundles created by the wizard. Its value is set to Yes .
Pairs/Conductors	Pair	Pairs/conductors selected by the wizard to create a cable link.
Cable links table (amCableLink)		
Name	Name	Default value of the field.
Link type	seLinkType	Populated by the wizard according to whether the cable link concerns a cable device or a cable.
Parent link	Parent	
Label rule	LabelRule	The label rule selected using a wizard.
Label	Label	The label is calculated according to the label rule.
Function	Duty	Duty selected using the wizard.

Run riser cables wizard - created or modified data, continued

Field label	SQL name of the field	Explanations
Device	Device	Device selected automatically by the wizard or by you using the wizard.
Port	Port	Port selected or created by the wizard.
Cable	Cable	Cable created by the wizard or selected by you using the wizard.
Bundle	Bundle	Bundle selected or created using the wizard.
Trace histories table (amTraceHistory)		
Name	Name	Copy the value defined for the same field used at the level of the cable link.
Type	seLinkType	Copy the value defined for the same field used at the level of the cable link.
Parent history	Parent	Copy the value defined for the same field used at the level of the cable link.
Label	Label	Copy the value defined for the same field used at the level of the cable link.
Device	Device	Copy the value defined for the same field used at the level of the cable link.
Port	Port	Copy the value defined for the same field used at the level of the cable link.
Cable	Cable	Copy the value defined for the same field used at the level of the cable link.
Bundle	Bundle	Copy the value defined for the same field used at the level of the cable link.
Link	Link	Cable link created by the wizard.
Trace outputs table (amTraceOutput)		
Type	seTraceType	Value set to To connect by the wizard.
Function	Duty	Duty selected using the wizard.
Label	ModifiedLinkLabel	The label is calculated by the wizard and is not based on a label rule in any way.
Summary of the trace	TraceString	Calculated by the wizard.

Run riser cables wizard - created or modified data, continued

Field label	SQL name of the field	Explanations
Trace history	TraceHist	Histories created by the wizard.
Trace operations	TraceOps	Operations created by the wizard.
Trace operations table (amTraceOp)		
Title	Label	Value defined by the wizard according to the comments that you entered using the wizard.
Host trace history	HostTraceHist	Defined by the wizard.
User trace history	UserTraceHist	Defined by the wizard.

Viewing the result in the Windows client

The easiest way to view the result of this wizard is to display the detail of the project selected on the last page of the wizard:

1. Display the list of projects (**Organization management/ Organization/ Projects**).
2. Select the project created by the wizard.
3. Select the **Cables** tab.
The **Cables** tab enables you to locate the cable that connects the two termination fields:
 - a. Select the cable to examine.
 - b. Click the magnifier to display an intermediary window.
 - c. In the intermediary window, click the magnifier to the right of the **Cable** field to view the detail of the device.
 - d. Right-click on any field (not link) in the **Assets** table (**amAsset**) to display the shortcut menu.
 - e. From the shortcut menu, select either the **Actions/ Cable cross-connections** or **Actions/ Display cable traces** menu entry to view and browse through the traces.
This particularly enables you to access the termination-field devices that were connected to the cable by a wizard.
4. Select the **Traces** tab.
The **Traces** tab displays the list of trace outputs created by the wizard.

After having launched the wizard

Run the riser cable at the level of your network, being sure to respect the indications listed in the project and the work order, and update the follow-up information of the project and work order.

Resolving possible problems

If the **Select a host termination field** page or **Select a user termination field** page does not display any termination field to select:

1. Click **Cancel** to interrupt the execution of the wizard.
2. Display the list of termination fields (**Portfolio management/ Cable/ Termination fields**).
3. Select the host termination field (the one that was not listed by the wizard).
4. Select the **Served locations** tab.
5. Add the location to the location of the user termination field to the list.
6. Click **Modify**.
7. Click **Close**.
8. Execute the **Run riser cables** wizard again.

Use the Run riser cables wizard for the practical case

We are going to run a telephone riser cable between the floor's termination field and the main termination field.

1. Display the list of actions (**Tools/ Actions**).
2. Select the **Run riser cables** wizard.

Note: If this wizard does not appear in the list, select **Others...** at the end of the list.

3. Enter the following information:

Label displayed by the wizard	Value to enter or select
Select a host termination field page	
Locations	/Cabled building/2nd floor/Main wiring closet/
Host termination field	Main wiring closet
Do you want to select a starting position?	Do not check this option.
Select the host termination field connectors and a label rule page	
Cable connection types	RJ45 - 568B - Pin
Select the label rule for the links	Practical case - Port of a termination-field

Label displayed by the wizard	Value to enter or select
	patch panel link
Do you want to search (not create) ports of this pin mode?	Do not check this option.
Map consecutive pins to virtual port for pin-based devices (default is next available pin)?	Check this selection box.
Type of cable connection for odd pins	Do not change the information displayed by the wizard; it will not be used.
Type of duty for odd pins connector	Do not change the information displayed by the wizard; it will not be used.
Select a user termination field page	
Locations	Cabled building/1st floor/1st floor wiring closet
User termination field	Wiring closet for each floor
Do you want to select a starting position?	Do not check this option.
Select the user termination field connectors and a label rule page	
Cable connection types	RJ45 - 568B - Pin
Select the label rule for the links	Practical case - Port of a termination-field patch panel link
Do you want to search (not create) ports of this pin mode?	Do not check this option.
Map consecutive pins to virtual port for pin-based devices (default is next available pin)?	Check this selection box.
Type of cable connection for odd pins	Do not change the information displayed by the wizard; it will not be used.
Type of duty for odd pins connector	Do not change the information displayed by the wizard; it will not be used.
Select a riser cable page	
Cable role	Riser
Do you want to use an existing cable?	Do not check this option.
Model of the cable to create	L 120 - Category 5 - 32 twisted pairs

Label displayed by the wizard	Value to enter or select
Number of pairs to be connected:	32
Do you want to select a starting pair?	Do not check this option.
Select label rule for riser page	
Do you want to use a label rule for the cable label?	Check this selection box.
Select the label rule for the cable	Practical case - Cables
Duty for the new cable:	Voice
Number of pairs in a bundle	1
Select the label rule for the links	Practical case - Link - Sequentially, by pairs
Select a project and a work order page	
Apply all changes to a project/work order?	Check this selection box.
Projects	Run riser cables
Work orders	Select the work order proposed by the wizard.
Comments on the cable	Install the new cable
Connection comments	Riser run to connect devices
Connection termination field for the work order	CONNECT

Look at the result in the Window client:

1. Display the list of projects (**Organization management/ Organization/ Projects**).
2. Select the **Run riser cables** project.
3. Select the **Cables** tab.
4. Select the cable just created.
5. Click the magnifier to display an intermediary window.
6. In the intermediary window, click the magnifier to the right of the **Cable** field to view the detail of the device.
7. Have a look at the different tabs at your own pace.
8. Select any field (not link) in the **Cables** table (**amCable**).

9. Right-click.
10. From the shortcut menu, select either the **Actions/ Cable cross-connections** or **Actions/ Display cable traces** menu entry to view and browse through the traces.
This particularly enables you to access the termination-field devices that were connected to the cable by a wizard.

Run lateral cables wizard

Use the Run lateral cables wizard	133
Use the Run lateral cables wizard for the practical case.	141

Functions performed by the wizard

This wizard connects wall outlets to a termination field using lateral cables. The wizard uses a group of topologies as its model.

Prerequisites

You should have already created:

- The location of the wall outlets.
- The group of topologies to use as the model.
- The topologies that compose the topology group.
- The termination fields that serve the locations of the wall outlets.
- The devices of the termination field to which the lateral cable will connect.

Caution: You must respect different conditions according to the connection to the device and whether it is made by ports or by pins.

Connection by ports or by pins

- A project and a work order, if you want to store the trace of the connections carried out.

Use the Run lateral cables wizard

Launching the wizard

This wizard does not require any particular context.

1. Display the list of actions (**Tools/ Actions**).
2. Select the **Run lateral cables** wizard.

Note: If this wizard does not appear in the list, select **Others...** at the end of the list..

Tip: If you display the list of locations (**Organization management/ Organization/ Locations** menu item) and select all the locations of the wall outlets before executing the wizard, the wizard will not ask to you perform this selection again.

Information used when using the wizard

Note: Certain labels in the following table are not displayed by the wizard unless you select the appropriate option.

Run lateral cables wizard - description of fields to populate

Label displayed by the wizard	Explanations
Select user locations page	
Locations	Select one location per wall outlet to connect.
Select the topology group page	
Topology groups	Select the group of topologies that will be used as the connection model of the wall outlets to the termination field that serves them.
Are there any topologies in which you want to look for ports with pin-based connectors?	Check this option if you want the wizard to look for virtual ports that have already been created on the host or the user side of the topology. This option's only result is that it displays two other options that will have an effect on how the wizard works.
Do you want to look for ports on the host side of the topology?	If you check this option, the wizard looks for virtual ports that exist at the level of the termination fields to create the connection with the lateral cable. This is valid for the topologies selected from the following list.
Do you want to look for ports on the user side of the topology?	If you check this option, the wizard looks for virtual ports that exist at the level of the wall outlets to create the connection with the lateral cable. This is valid for the topologies selected from the following list.
Topology in a group	Select the topologies to which apply the options previously checked.

Run lateral cables wizard - description of fields to populate, continued

Label displayed by the wizard	Explanations
Map consecutive pins to virtual port for pin-based devices (default is next available pin)?	<ul style="list-style-type: none"> • If you check this option, the wizard only uses the pins with consecutive numbers to create virtual ports. • If you don't check this option, the wizard selects the first available pins without requiring them to have consecutive numbers.
Select a project and a work order page	
Comments on the devices	Value for the Description field (Description) of the Assets included in projects table (amAstProjDesc).
Cable comments	Value for the Description field (Description) of the Cables concerned by the project table (amProjCable).
Connection comments	Value for the Description field (Description) of the Traces concerned by the project table (amProjTraceOut).
Connection termination field for the work order	Value for the Label field (Label) of the Trace operations table (amTraceOp).

Data created or modified by the wizard

The wizard creates, if appropriate, the following items:

- Cables (**amCable**)
- Pairs/conductors for the cables (**amCablePair**)
- Bundles (**amCableBundle**)
- Cable devices (**amAsset**)
- Pins for the devices (**amDevicePin**).
- Ports for the devices (**amPort**)
- Cable links (**amCableLink**)
- Trace histories (**amTraceHistory**)
- Trace outputs (**amTraceOutput**)
- Trace operations (**amTraceOp**)

The wizard populates the following fields:

Run lateral cables wizard - created or modified data

Field label	SQL name of the field	Explanations
Assets table (amAsset)		
Ports	Ports	The wizard creates virtual ports connected to bundles of the lateral cable if it is necessary.
Location	Location	The wizard links wall outlets to the location selected using the wizard, if it creates wall outlets.
Ports table (amPort)		
Port #	PortNo	This field is only populated for the virtual ports created by the wizard. Its value is the number after the last port number existing for the device.
#	sSequenceNumber	This field is only populated for the virtual ports created by the wizard. Its value is the number after the last port number existing for the device.
Connection type	CabCnxType	This field is only populated for the virtual ports created by the wizard. Its value corresponds to the connection type defined at the level of the topology step for the device to which the port belongs.
Function	Duty	This field is only populated for the virtual ports created by the wizard. Its value corresponds to the duty defined at the level of the topology for the device to which the port belongs.
Status	seCnxStatus	This field is only populated for the virtual ports created by the wizard. Its value is set to Available by the wizard.
Virtual port	bVirtual	This field is only populated for the virtual ports created by the wizard. Its value is set to Yes .
Port pins/terminals	DevPin	Pins selected by the wizard to create a cable link, if the connection is by pin.
Cables table (amCable)		
Model	Model	This field is only modified for the cables created by the

Run lateral cables wizard - created or modified data, continued

Field label	SQL name of the field	Explanations
		wizard. Cable model defined at the level of the topology step.
Label rule	LabelRule	Default value of the field.
Label	Label	This field is only modified for the cables created by the wizard. The label is calculated according to the label rule.
User location	UserLoc	This field is only modified for the cables created by the wizard. Location of the wall outlet.
Host location	HostLoc	This field is only modified for the cables created by the wizard. Location of the termination field found by the wizard to create the connection.
Role	CableRole	This field is only modified for the cables created by the wizard. Role defined at the level of the topology step.
Status	seCnxStatus	This field is only modified for the cables created by the wizard. Its value is set to Available by the wizard.
Pairs/Conductors	Pairs	This field is only populated for the cables created by the wizard. Pairs/conductors of the model.
Bundles	Bundles	Virtual bundles created by the wizard if it is necessary.
Pairs/Conductors table (amCablePair)		
Bundle	Bundle	Bundle with which the pair/conductor is associated to create a cable link.
Pins table (amDevicePin)		
Port	Port	Port with which the pin/terminal is associated to create a cable link.
Cable bundle table (amCableBundle)		
#	sSequenceNumber	This field is only populated for the virtual bundles created

Run lateral cables wizard - created or modified data, continued

Field label	SQL name of the field	Explanations
		by the wizard. Its value is the number after the last bundle number existing for the device.
Name	Name	This field is only populated for the virtual bundles created by the wizard. Its value is the number after the last bundle number existing for the device.
Function	Duty	This field is only populated for the virtual bundles created by the wizard. Duty defined at the level of the topology.
Status	seCnxStatus	This field is only populated for the virtual bundles created by the wizard. Its value is set to Available by the wizard.
Virtual bundle	bVirtual	This field is only populated for the virtual bundles created by the wizard. Its value is set to Yes .
Pairs/Conductors	Pair	Pairs/conductors selected by the wizard to create a cable link.
Cable links table (amCableLink)		
Name	Name	Default value of the field.
Link type	seLinkType	Populated by the wizard according to whether the cable link concerns a cable device or a cable.
Parent link	Parent	
Label rule	LabelRule	The label rule selected at the level of the topology.
Label	Label	The label is calculated according to the label rule.
Function	Duty	Duty defined at the level of the topology.
Device	Device	Device selected or created using the wizard.
Port	Port	Port selected or created by the wizard.
Cable	Cable	Cable selected or created by the wizard.
Bundle	Bundle	Bundle selected or created using the wizard.

Run lateral cables wizard - created or modified data, continued

Field label	SQL name of the field	Explanations
Trace histories table (amTraceHistory)		
Name	Name	Copy the value defined for the same field used at the level of the cable link.
Type	seLinkType	Copy the value defined for the same field used at the level of the cable link.
Parent history	Parent	Copy the value defined for the same field used at the level of the cable link.
Label	Label	Copy the value defined for the same field used at the level of the cable link.
Device	Device	Copy the value defined for the same field used at the level of the cable link.
Port	Port	Copy the value defined for the same field used at the level of the cable link.
Cable	Cable	Copy the value defined for the same field used at the level of the cable link.
Bundle	Bundle	Copy the value defined for the same field used at the level of the cable link.
Link	Link	Cable link created by the wizard.
Trace outputs table (amTraceOutput)		
Type	seTraceType	Value defined using the wizard.
Function	Duty	Duty defined at the level of the topology.
Label	ModifiedLinkLabel	The label is calculated by the wizard and is not based on a label rule in any way.
Summary of the trace	TraceString	Calculated by the wizard.
Trace histories	TraceHist	Histories created by the wizard.
Trace operations	TraceOps	Operations created by the wizard.
Trace operations table (amTraceOp)		
Title	Label	Value defined by the wizard according to the comments that you entered using the wizard.
Host trace	HostTraceHist	Defined by the wizard.

Run lateral cables wizard - created or modified data, continued

Field label	SQL name of the field	Explanations
history		
User trace history	UserTraceHist	Defined by the wizard.

Viewing the result in the Windows client

The easiest way to view the result of this wizard is to display the detail of the project selected on the last page of the wizard:

1. Display the list of projects (**Organization management/ Organization/ Projects**).
2. Select the project created by the wizard.
3. Select the **Cables** tab.

The **Cables** tab enables you to locate the cable that connects the two termination fields:

- a. Select the cable to examine.
- b. Click the magnifier to display an intermediary window.
- c. In the intermediary window, click the magnifier to the right of the **Cable** field to view the detail of the device.
- d. Right-click on any field (not link) in the **Assets** table (**amAsset**) to display the shortcut menu.
- e. From the shortcut menu, select either the **Actions/ Cable cross-connections** or **Actions/ Display cable traces** menu entry to view and browse through the traces.

This particularly enables you to access the termination-field devices that were connected to the cable by a wizard.

4. Select the **Assets** tab.

The **Assets** tab enables you to locate the devices created by the wizard (not those that already existed):

- a. Select the device to examine.
- b. Click the magnifier to display an intermediary window.
- c. In the intermediary window, click on the magnifier to the right of the **Asset** field to view the detail of the device.
- d. Right-click on any field (not link) in the **Assets** table (**amAsset**) to display the shortcut menu.
- e. From the shortcut menu, select either the **Actions/ Cable cross-connections** or **Actions/ Display cable traces** menu entry to view and browse through the traces.

This particularly enables you to access the termination-field devices that were connected to the cable by a wizard.

5. Select the **Traces** tab.

The **Traces** tab displays the list of trace outputs created by the wizard.

After having launched the wizard

Run the lateral cable and install the cable devices as you need them, being sure to respect the indications listed in the project and the work order, and update the follow-up information of the project and work order.

Use the Run lateral cables wizard for the practical case.

We are going to run a lateral cable between the wall outlet of Office 1 and the floor's termination field.

1. Display the list of actions (**Tools/ Actions**).
2. Select the **Run riser cables** wizard.

Note: If this wizard does not appear in the list, select **Others...** at the end of the list.

3. Enter the following information:

Label displayed by the wizard	Explanations
Select user locations page	
Locations	Cabled building/1st floor/Office 1
Select the topology group page	
Topology groups	Standard workstation
Are there any topologies in which you want to look for ports with pin-based connectors?	Do not check this option.
Map consecutive pins to virtual port for pin-based devices (default is next available pin)?	Do not check this option.
Select a project and a work order page	
Apply all changes to a project/work order?	Check this selection box.
Projects	Run lateral cables
Work orders	Select the work order proposed

Label displayed by the wizard	Explanations
	by the wizard.
Comments on the devices	Install the device.
Cable comments	Install new cable
Connection comments	Lateral run to connect devices
Connection termination field for the work order	CONNECT

Look at the result in the Window client:

1. Display the list of projects (**Organization management/ Organization/ Projects**).
2. Select the **Run lateral cables** project.
3. Select the **Cables** tab.
4. Select one of the cables just created.
5. Click the magnifier to display an intermediary window.
6. In the intermediary window, click the magnifier to the right of the **Cable** field to view the detail of the device.
7. Have a look at the different tabs at your own pace.
8. Select any field (not link) in the **Cables** table (**amCable**).
9. Right-click.
10. From the shortcut menu, select either the **Actions/ Cable cross-connections** or **Actions/ Display cable traces** menu entry to view and browse through the traces.
This particularly enables you to access the termination-field devices that were connected to the cable by a wizard.

Cross connect bundles wizard

Use the Cross connect bundles wizard	143
Use the Cross connect bundles wizard for the practical case.	150

Functions performed by the wizard

This wizard connects bundles of the same cable to one of the following components:

- Bundles of one or more cables.
- Ports of one or more cable devices.
- Ports of termination-field devices.

If the selected bundles or ports are already connected, the wizard begins by breaking the existing cable links before creating new ones.

Prerequisites

You should have already created:

- The source cable to connect, with its bundles, its user location and its host location.
- The cable device to which the cable connects, with its ports and its location. Otherwise, the cable to which the cable connects with its bundles, its user location and its host location.
- The termination fields that serve the user or host location of the cable to connect.
- A project and a work order, if you want to store the trace of the connections carried out.

Caution: The wizard does not know how to create a virtual port.

Use the Cross connect bundles wizard

Launching the wizard

To access this wizard, you must select a record or a field (not a link) from the **Cable bundles** table (**amCableBundle**):

To position yourself in the appropriate context:

1. Display the list of cables (**Portfolio management/ Cable/ Cables**).
2. Display the cable to connect.
3. Select the **Bundles** tab.
4. Select the bundles to cross connect.
5. Display the list of actions (**Tools/ Actions**).
6. Select the **Cross connect bundles** action.

Information used when using the wizard

Note: Certain labels in the following table are not displayed by the wizard unless you select the

appropriate option.

Cross connect bundles wizard - description of fields to populate

Label displayed by the wizard	Explanations
Cross connect the bundles page	
Display available host bundles	<ul style="list-style-type: none"> If you check this option, the wizard only displays the cable bundles whose host side is not used by any cable link. If you check this option, the wizard displays all the cable's bundles. <p>If you select a bundle whose host side is used by a cable link, the wizard will break the existing cable link before creating a new one.</p>
Display available user bundles	<ul style="list-style-type: none"> If you check this option, the wizard only displays the cable bundles whose user side is not used by any cable link. If you check this option, the wizard displays all the cable's bundles. <p>If you select a bundle whose user side is used by a cable link, the wizard will break the existing cable link before creating a new one.</p>
Select the bundles to connect	Select the cable bundles to connect.
Select label rule for the link of the selected bundle(s)	You use this label rule to populate the Label field (Label) of the links created at the level of the cable bundles.
Select connection side	Indicate which side of the cable you want to connect.
Connect to	<p>Indicate to which component you want to connect the selected bundles:</p> <ul style="list-style-type: none"> Ports: to the ports of one or more cable devices. Bundles: to the bundles of one or more cables. Termination fields: to the ports of the termination-field devices that serve the location of the cable.
Select a device and ports page	
Select a device	Select the cable devices to which you want to connect the bundles of the source cable.
Show available host ports	<ul style="list-style-type: none"> If you check this option, the wizard only displays the ports of the device that are not used as hosts by any cable link. If you check this option, the wizard displays all the device's ports.

Cross connect bundles wizard - description of fields to populate, continued

Label displayed by the wizard	Explanations
	If you select a port that is already used as a host, the wizard will break the existing cable link before creating a new one.
Show available user ports	<ul style="list-style-type: none"> • If you check this option, the wizard only displays the ports of the device that are not used as users by any cable link. • If you check this option, the wizard displays all the device's ports. <p>If you select a port that is already used as a user, the wizard will break the existing cable link before creating a new one.</p>
Select the target ports	You must select as many ports as you have selected bundles for the cable in the previous window.
Select label rule for the link of the selected port(s)	You use this label rule to populate the Label field (Label) of the links created at the level of the port device.
Select a cable and bundles page	
Cables	Select the cable to which you want to connect the bundles of the source cable.
Display available host bundles	<ul style="list-style-type: none"> • If you check this option, the wizard only displays the cable bundles whose host side is not used by any cable link. • If you check this option, the wizard displays all the cable's bundles. <p>If you select a bundle whose host side is used by a cable link, the wizard will break the existing cable link before creating a new one.</p>
Display available user bundles	<ul style="list-style-type: none"> • If you check this option, the wizard only displays the cable bundles whose user side is not used by any cable link. • If you check this option, the wizard displays all the cable's bundles. <p>If you select a bundle whose user side is used by a cable link, the wizard will break the existing cable link before creating a new one.</p>
Select label rule for destination bundle	You use this label rule to populate the Label field (Label) of the links created at the level of the target cable bundles.
Select a termination field and ports page	
Termination fields	Select the termination fields to which you want to connect the bundles of the source cable.

Cross connect bundles wizard - description of fields to populate, continued

Label displayed by the wizard	Explanations
Show available host ports	<ul style="list-style-type: none"> If you check this option, the wizard only displays the ports of the termination-field devices that are not used as hosts by any cable link. If you check this option, the wizard displays all the ports. <p>If you select a port that is already used as a host, the wizard will break the existing cable link before creating a new one.</p>
Show available user ports	<ul style="list-style-type: none"> If you check this option, the wizard only displays the ports of the termination-field devices that are not used as users by any cable link. If you check this option, the wizard displays all the device's ports. <p>If you select a port that is already used as a user, the wizard will break the existing cable link before creating a new one.</p>
Select the target ports	You must select as many ports as you have selected bundles for the cable in the previous window.
Select label rule for the link of the selected port(s)	You use this label rule to populate the Label field (Label) of the links created at the level of the termination-field port devices.
Select a project and a work order page	
Connection comments	Value for the Description field (Description) of the Traces concerned by the project table (amProjTraceOut), when the wizard creates a connection.
Disconnection comments	Value for the Description field (Description) of the Traces concerned by the project table (amProjTraceOut), when the wizard deletes a connection.
Comments on the termination field connected during work order	Value for the Label field (Label) of the Trace operations table (amTraceOp), when the wizard creates a connection.
Comments on the termination field disconnected during work order	Value for the Label field (Label) of the Trace operations table (amTraceOp), when the wizard deletes a connection.

Data created or modified by the wizard

To create a connection, the wizard creates the following items:

- Cable links (**amCableLink**)
- Trace histories (**amTraceHistory**)
- Trace outputs (**amTraceOutput**)
- Trace operations (**amTraceOp**)

To delete a connection, the wizard performs the following tasks:

- Deletes the cable links (**amCableLink**).
- Creates trace outputs (**amTraceOutput**).
- Creates trace operations (**amTraceOp**).

The wizard populates the following fields:

Cross connect bundles wizard - created or modified data

Field label	SQL name of the field	Explanations
Cable links table (amCableLink)		
Name	Name	Default value of the field.
Link type	seLinkType	Populated by the wizard according to whether the cable link concerns a cable device or a cable.
Parent link	Parent	
Label rule	LabelRule	The label rule selected using a wizard. If no label rule has been selected, this is the default value of the field.
Label	Label	The label is calculated according to the label rule.
Function	Duty	Duty of the port or bundle connected by the wizard.
Device	Device	Device selected using the wizard.
Port	Port	Port selected using the wizard.
Cable	Cable	Cable selected using the wizard.
Bundle	Bundle	Bundle selected using the wizard.
Trace histories table (amTraceHistory)		
Name	Name	Default value of the field.
Type	seLinkType	Copy the value defined for the same field used at the level of the cable link.

Cross connect bundles wizard - created or modified data, continued

Field label	SQL name of the field	Explanations
Parent history	Parent	Copy the value defined for the same field used at the level of the cable link.
Label	Label	Copy the value defined for the same field used at the level of the cable link.
Device	Device	Copy the value defined for the same field used at the level of the cable link.
Port	Port	Copy the value defined for the same field used at the level of the cable link.
Cable	Cable	Copy the value defined for the same field used at the level of the cable link.
Bundle	Bundle	Copy the value defined for the same field used at the level of the cable link.
Link	Link	<ul style="list-style-type: none"> • If the wizard creates a connection: It is the cable link created by the wizard. • If the wizard deletes a connection: It is empty.
Trace outputs table (amTraceOutput)		
Type	seTraceType	<ul style="list-style-type: none"> • To connect: if it's a connection. • To disconnect: if it's a disconnection.
Function	Duty	Duty of the port or the bundle connected by the wizard.
Label	ModifiedLinkLabel	The label is calculated by the wizard and is not based on a label rule in any way.
Summary of the trace	TraceString	Calculated by the wizard.
Trace history	TraceHist	<ul style="list-style-type: none"> • If the wizard creates a connection: They are the histories created by the wizard. • If the wizard deletes a connection: They are the histories that exist for the deleted cable links.
Trace operations	TraceOps	Operations created by the wizard.
Trace operations (amTraceOp)		
Title	Label	Value defined by the wizard according to the comments that you entered using the wizard.

Cross connect bundles wizard - created or modified data, continued

Field label	SQL name of the field	Explanations
Host trace history	HostTraceHist	Defined by the wizard.
User trace history	UserTraceHist	Defined by the wizard.

Viewing the result in the Windows client

The easiest way to view the result of this wizard is to display the detail of the project selected on the last page of the wizard.

1. Display the list of projects (**Organization management/ Organization/ Projects**).
2. Select the project created by the wizard.
3. Select the **Traces** tab.
The **Traces** tab displays the list of trace outputs created by the wizard.
 - a. Select the trace output to examine.
 - b. Click the magnifier to display an intermediary window.
 - c. In the intermediary window, click on the magnifier to the right of the **Trace output** field.
 - d. Examine the trace output information.

You can also display the cross connections screen or the cable trace outputs screen:

1. Display the list of cables (**Portfolio management/ Cable/ Cables**).
2. Select the cable that you just connected from the list of cables.
3. Display the list of actions (**Tools/ Actions**).
4. Select the **Cable cross-connections** or **Display cable traces** action.

After having launched the wizard

Perform the physical cross connections, being sure to respect the indications listed in the project and the work order, and update the follow-up information of the project and work order.

Use the Cross connect bundles wizard for the practical case.

We are going to perform a modification at the level of the lateral cable that links the telephone outlet from Office 1 to the floor's termination field: We will connect the cable to another termination-field port.

Proceed in the following manner:

1. Display the list of locations (**Organization management/ Organization/ Locations**).
2. Select the **Cabled building/1st floor/Office 1** location.
3. Select the **Cable users** tab.
4. Select the cable that connects the telephone to the termination field (this bundle's duty is **Voice**).
5. Click the **Magnifier** button.
6. Select the **Bundles** tab.
7. Select the bundle from the list.
8. Display the list of actions (**Tools/ Actions**).
9. Select the **Cross connect bundles** action.
10. Enter the following information:

Label displayed by the wizard	Value
Cross connect the bundles page	
Select connection side	Host side
Display available host bundles	Unselect this option.
Select the bundles to connect	Select the bundle.
Select label rule for the link of the selected bundle (s)	Practical case - Link - Sequentially, by pairs
Connect to	Termination fields
Select a termination field and ports page	
Termination fields	Floor's termination field

Label displayed by the wizard	Value
Show available host ports	Check this selection box.
Select the target ports	Select a port whose function is Voice .
Select label rule for the link of the selected port(s)	Practical case - Port of a termination-field patch panel link
Select a project and a work order page	
Apply all changes to a project/work order?	Check this selection box.
Projects	Cross connect bundles
Work orders	Select the work order proposed by the wizard.
Connection comments	Connect cables
Disconnection comments	Disconnect cables
Comments on the termination field connected during work order	CONNECT
Comments on the termination field disconnected during work order	DISCONNECT

Look at the result in the Windows client:

1. Display the list of projects (**Organization management/ Organization/ Projects**).
2. Select the **Cross-connect bundles** project.
3. Select the **Traces** tab.
4. Select the trace.
5. Click the **Magnifier** button.
6. Click the **Magnifier** button to the right of the **Trace** field.
7. Examine the detail of the trace output.

Chapter 8: Viewing the traces

Cable cross-connections wizard	152
Use the Cable cross-connections wizard	153
Device cross-connections wizard	154
Use the Device cross-connections wizard.	155
Display device traces wizard	156
Use the Display device traces wizard.	156
Display cable traces wizard	157
Use the Display cable traces wizard.	158

There are several ways to view a trace:

- Connection point by connection point, using the **Trace** tabs of the following tables:
 - **Cables (amCable)**
 - **Assets (amAsset)**
 - **Ports (amPort)**
 - **Cable bundles (amCableBundle)**
- In a more general manner, using the windows displayed by the following shortcut menus:
 - Actions/ Cable cross-connections
 - Actions/ Device cross-connections
 - Actions/ Display device traces
 - Actions/ Display cable traces

This chapter explains how to view the traces in a general manner.

Cable cross-connections wizard

Definitions

[Asset Manager key terms \(Cable and Circuit\)/ Cross connection](#)

Functions performed by the wizard

The **Cable cross-connections** wizard displays a window that enables you to perform the following tasks:

- View the host and user links of the cable.
- Navigate through the traces, which are made up of cable links (either in the host direction or the user direction).

This enables you, for example, to answer the following questions:

- Which links are for this cable?
- Which bundles are used by links?
- To which wall outlet port is such cable bundle connected?
- To which termination field port is such a cable bundle connected?

Prerequisites

No prerequisites.

Use the Cable cross-connections wizard

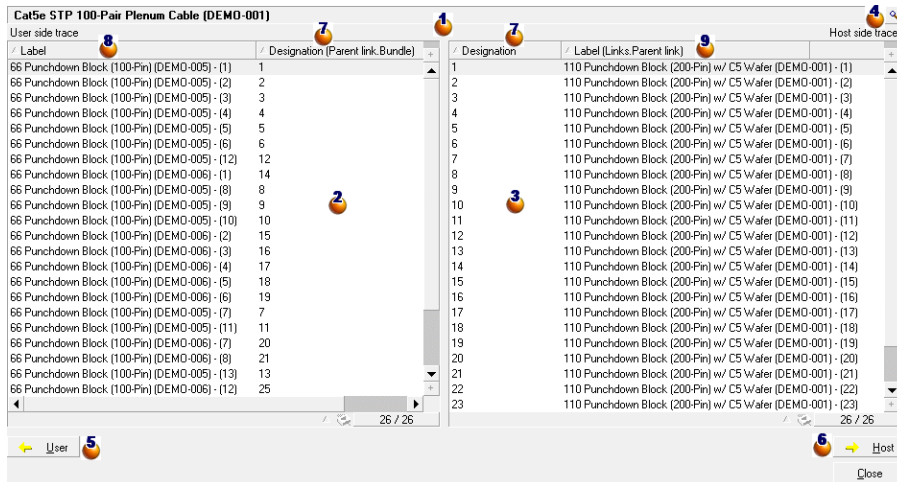
Launching the wizard

To access this wizard, you need to select a record or a field (not a link) in the **Cables** table (**amCable**):

1. Display the list of cables (**Portfolio management/ Cable/ Cables**).
2. Select the cable in the list window, or select a field (not link) in the **Cables** table.
3. Display the list of actions (**Tools/ Actions**).
4. Select the **Cable cross-connections** wizard.

Information used when using the wizard

Cable cross-connections wizard - browser window



1 Cable or device whose 2 and 3 tables display the cable links.

2 User cable links and devices that connect to the cable or the device 1.

3 Host cable links and devices that connect to the cable or the device 1.

4 Click the magnifier to display the detail of the cable or the device 1.

5 Click this arrow to display the browser window for the user cable or device that corresponds to the selected link 2.

6 Click this arrow to display the browser window for the host cable or device that corresponds to the selected link 3.

7 Cable bundle numbers 4 (if 1 is a cable) or device ports 4 (if 1 is a device).

8 Label of the user link that connects to the bundle or the port 7.

9 Label of the host link that connects to the bundle or the port 7.

Data created or modified by the wizard

This wizard does not create, delete or modify any data.

Device cross-connections wizard

Definitions

Cross connection

Functions performed by the wizard

The **Device cross-connections** wizard displays a window to help you perform the following tasks:

- View the host and user links of the device to which the device links belong (in the host or user direction)

This enables you, for example, to answer the following questions:

- Which links are for this device?
- Which ports are used by links?
- To which cable bundle is such a device port connected?

Prerequisites

No prerequisites.

Use the Device cross-connections wizard.

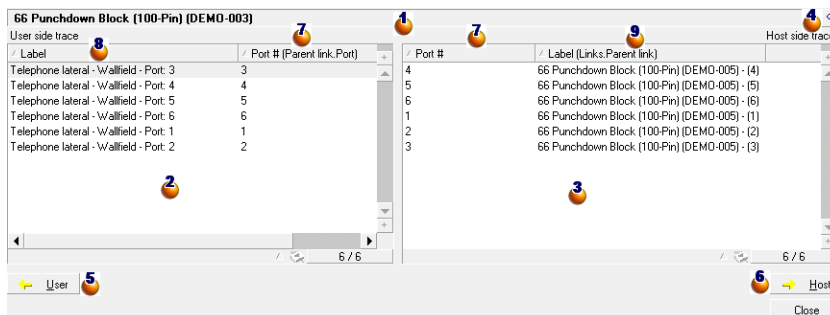
Launching the wizard

To access this wizard, you need to select a record or a field (not a link) in the **Assets** table (**amAsset**):

1. Display the list of cable devices (**Portfolio management/ Cable/ Devices**).
2. Select the cable device in the list window, or select a field (not link) in the **Assets** table.
3. Display the list of actions (**Tools/ Actions**).
4. Select the **Device cross-connections** wizard.

Information used when using the wizard

Device cross-connections wizard - browser window



- 1 Cable or device whose 2 and 3 tables display the cable links.
- 2 User cable links and devices that connect to the cable or the device 1.
- 3 Host cable links and devices that connect to the cable or the device 1.

4 Click this magnifier to display the detail of the cable or the device 4.

5 Click this arrow to display the browser window for the user cable or device that corresponds to the selected link 5.

6 Click this arrow to display the browser window for the host cable or device that corresponds to the selected link 6.

7 Cable bundle numbers 7 (if 7 is a cable) or device ports 7 (if 7 is a device).

8 Label of the user link that connects to the bundle or the port 8.

9 Label of the host link that connects to the bundle or the port 9.

Data created or modified by the wizard

This wizard does not create, delete or modify any data.

Display device traces wizard

Definitions

Trace

Functions performed by the wizard

The **Display device traces** wizard displays a window to help you perform the following tasks:

- View the host and user traces of the device.
- Print the list of traces.

Prerequisites

No prerequisites.

Use the Display device traces wizard.

Launching the wizard

To access this wizard, you need to select a record or a field (not a link) in the **Assets** table (**amAsset**):

1. Display the list of cable devices (**Portfolio management/ Cable/ Cable devices**).
2. Select the cable device in the list window, or select a field (not link) in the **Assets** table.
3. Display the list of actions (**Tools/ Actions**).
4. Select the **Display device traces** wizard.

Information used when using the wizard

Display device traces wizard - browser window

Source	Host side cable trace	Host side device trace
66 Punchdown Block (100-Pin) (DEMO-006) - (1)	Cat5e STP 100-Pair Plenum Cable (DEMO-001) - (14)	110 Punchdown Block (200-Pin) w/ C5 Water (DEMO-001..
66 Punchdown Block (100-Pin) (DEMO-006) - (2)	Cat5e STP 100-Pair Plenum Cable (DEMO-001) - (15)	110 Punchdown Block (200-Pin) w/ C5 Water (DEMO-001..
66 Punchdown Block (100-Pin) (DEMO-006) - (3)	Cat5e STP 100-Pair Plenum Cable (DEMO-001) - (16)	110 Punchdown Block (200-Pin) w/ C5 Water (DEMO-001..
66 Punchdown Block (100-Pin) (DEMO-006) - (4)	Cat5e STP 100-Pair Plenum Cable (DEMO-001) - (17)	110 Punchdown Block (200-Pin) w/ C5 Water (DEMO-001..
66 Punchdown Block (100-Pin) (DEMO-006) - (5)	Cat5e STP 100-Pair Plenum Cable (DEMO-001) - (18)	110 Punchdown Block (200-Pin) w/ C5 Water (DEMO-001..
66 Punchdown Block (100-Pin) (DEMO-006) - (6)	Cat5e STP 100-Pair Plenum Cable (DEMO-001) - (19)	110 Punchdown Block (200-Pin) w/ C5 Water (DEMO-001..
66 Punchdown Block (100-Pin) (DEMO-006) - (7)	Cat5e STP 100-Pair Plenum Cable (DEMO-001) - (20)	110 Punchdown Block (200-Pin) w/ C5 Water (DEMO-001..
66 Punchdown Block (100-Pin) (DEMO-006) - (8)	Cat5e STP 100-Pair Plenum Cable (DEMO-001) - (21)	110 Punchdown Block (200-Pin) w/ C5 Water (DEMO-001..
66 Punchdown Block (100-Pin) (DEMO-006) - (9)	Cat5e STP 100-Pair Plenum Cable (DEMO-001) - (22)	110 Punchdown Block (200-Pin) w/ C5 Water (DEMO-001..
66 Punchdown Block (100-Pin) (DEMO-006) - (10)	Cat5e STP 100-Pair Plenum Cable (DEMO-001) - (23)	110 Punchdown Block (200-Pin) w/ C5 Water (DEMO-001..
66 Punchdown Block (100-Pin) (DEMO-006) - (11)	Cat5e STP 100-Pair Plenum Cable (DEMO-001) - (24)	110 Punchdown Block (200-Pin) w/ C5 Water (DEMO-001..
66 Punchdown Block (100-Pin) (DEMO-006) - (12)	Cat5e STP 100-Pair Plenum Cable (DEMO-001) - (25)	110 Punchdown Block (200-Pin) w/ C5 Water (DEMO-001..
66 Punchdown Block (100-Pin) (DEMO-006) - (13)	Cat5e STP 100-Pair Plenum Cable (DEMO-001) - (26)	110 Punchdown Block (200-Pin) w/ C5 Water (DEMO-002..

1 Select the device to examine.

2 This table contains one row per trace that is directly attached to the device 1, as well as one line per free port (in other words, one that is not used by any link).

3 The **Source** column displays the labels of the links that are directly attached to the device 1, as well as a label for the free ports.

- The blue labels designate the ports used by at least one link.
- The red labels designate the ports that are not used by any links.

4 The **xxx Host side trace** columns are located to the right of the **Source** column. They display the labels of the traces in the host direction.

5 The **xxx User side trace** columns are located to the left of the **Source** column. They display the labels of the traces in the user direction.

Data created or modified by the wizard

This wizard does not create, delete or modify any data.

Display cable traces wizard

Definitions

Trace

Functions performed by the wizard

The **Display cable traces** wizard displays a window to help you perform the following tasks:

- View the host and user traces of the cable.
- Print the list of traces.

Prerequisites

No prerequisites.

Use the Display cable traces wizard.

Launching the wizard

To access this wizard, you need to select a record or a field (not a link) in the **Cables** table (**amCable**):

1. Display the list of cables (**Portfolio management/ Cable/ Cables**).
2. Select the cable in the list window, or select a field (not link) in the **Cables** table.
3. Display the list of actions (**Tools/ Actions**).
4. Select the **Display cable traces** wizard.

Information used when using the wizard

Display cable traces wizard - browser window

Label	Length	Symbol (Model Uni...
Riser cable - Telephone	0	
Telephone lateral - Wallfield - Port: 1	0	
Telephone lateral - Wallfield - Port: 2	0	
Telephone lateral - Wallfield - Port: 3	0	
Telephone lateral - Wallfield - Port: 4	0	
Telephone lateral - Wallfield - Port: 5	0	
Telephone lateral - Wallfield - Port: 6	0	

User side device trace	User side cable trace	User side device trace	User side device trace	Source	Host side device trace
4-port Faceplate (DE...	Telephone lateral - W...	66 Punchdown Block (10...	66 Punchdown Block (10...	Cal5e STP 100-P...	110 Punchdown Block (200-Pin) w/ C5 Wafer (DEMO-001) - (1)
4-port Faceplate (DE...	Telephone lateral - W...	66 Punchdown Block (10...	66 Punchdown Block (10...	Cal5e STP 100-P...	110 Punchdown Block (200-Pin) w/ C5 Wafer (DEMO-001) - (2)
4-port Faceplate (DE...	Telephone lateral - W...	66 Punchdown Block (10...	66 Punchdown Block (10...	Cal5e STP 100-P...	110 Punchdown Block (200-Pin) w/ C5 Wafer (DEMO-001) - (3)
4-port Faceplate (DE...	Telephone lateral - W...	66 Punchdown Block (10...	66 Punchdown Block (10...	Cal5e STP 100-P...	110 Punchdown Block (200-Pin) w/ C5 Wafer (DEMO-001) - (4)
4-port Faceplate (DE...	Telephone lateral - W...	66 Punchdown Block (10...	66 Punchdown Block (10...	Cal5e STP 100-P...	110 Punchdown Block (200-Pin) w/ C5 Wafer (DEMO-001) - (5)
4-port Faceplate (DE...	Telephone lateral - W...	66 Punchdown Block (10...	66 Punchdown Block (10...	Cal5e STP 100-P...	110 Punchdown Block (200-Pin) w/ C5 Wafer (DEMO-001) - (6)
4-port Faceplate (DE...	Telephone lateral - W...	66 Punchdown Block (10...	66 Punchdown Block (10...	Cal5e STP 100-P...	110 Punchdown Block (200-Pin) w/ C5 Wafer (DEMO-001) - (7)
		66 Punchdown Block (10...	66 Punchdown Block (10...	Cal5e STP 100-P...	110 Punchdown Block (200-Pin) w/ C5 Wafer (DEMO-001) - (8)
		66 Punchdown Block (10...	66 Punchdown Block (10...	Cal5e STP 100-P...	110 Punchdown Block (200-Pin) w/ C5 Wafer (DEMO-001) - (9)
		66 Punchdown Block (10...	66 Punchdown Block (10...	Cal5e STP 100-P...	110 Punchdown Block (200-Pin) w/ C5 Wafer (DEMO-001) - (10)

1 Select the cable to examine.

2 This table contains one row per trace that is directly attached to the cable 1 (in other words, one that is not used by any links).

3 The **Source** column displays the labels of the links that are directly attached to the cable 1, as well as a label for the free bundles.

- The blue labels designate the labels of the bundles used by at least one link.
- The red labels designate the labels of the bundles that are not used by any links.

4 The **xxx Host side trace** columns are located to the right of the **Source** column. They display the labels of the traces in the host direction.

5 The **xxx User side trace** columns are located to the left of the **Source** column. They display the labels of the traces in the user direction.

Data created or modified by the wizard

This wizard does not create, delete or modify any data.

Chapter 9: Glossary (Cable and Circuit)

Asset Manager key terms (Cable and Circuit)	162
Pin/ Terminal	163
Cable	163
Trace	164
Color code	164
Column	166
Trace output	166
Termination-field configuration	166
Cable device	166
Slot	167
Color code entry	168
Topology step	169
Label	169
Bundle	170
Duty	170
Topology group	171
Host	171
Cross connection	172
Cable link	172
Line	172
Ring	172
Pair/conductor	172
Tip	173
Port	173
Label rule	173
Termination field	174
Role	175
Sequence	175

Terminal	176
Topology	176
Cable type	176
Connection type	176
Cable device type	177
Pair/Conductor type	178
Slot type	178
User	178
Key terms of the profession (Cable and Circuit)	179
Adapter	179
Rack	180
Punchdown block	181
Chassis	182
Cabling path	182
Converter	182
Vertical distribution	182
Lateral distribution	183
Hub	184
Jumper/ Patch cord	185
Length	185
Patch panel	185
Wall outlet	186
Main termination field	186
Repeater	186
Riser	186
Router	187
Wallfield	187
Switch	187
Run (a cable)	188
Run	188

Asset Manager key terms (Cable and Circuit)

Pin/ Terminal	163
Cable	163
Trace	164
Color code	164
Column	166
Trace output	166
Termination-field configuration	166
Cable device	166
Slot	167
Color code entry	168
Topology step	169
Label	169
Bundle	170
Duty	170
Topology group	171
Host	171
Cross connection	172
Cable link	172
Line	172
Ring	172
Pair/conductor	172
Tip	173
Port	173
Label rule	173
Termination field	174
Role	175
Sequence	175
Terminal	176

Topology	176
Cable type	176
Connection type	176
Cable device type	177
Pair/Conductor type	178
Slot type	178
User	178

Pin/ Terminal

Component of a cable device port that creates an electronic connection (pin) or optical connection (terminal) with a connector pin/terminal or a cable wire.

The cable-device pins/terminals are associated with a port. The ports, themselves, can be associated with a bundle of cable pairs/conductors to create a cable link.

At the level of the connection types, the pins/terminals are associated with a color code entry.

Opposites

Pin is one of the two connection modes whose opposite is [Port](#).

Table in the Asset Manager database that describes these objects

Pins (amDevicePin)

Cable

A cable is composed of one of the following sets of components:

- A set of wire pairs, if it conducts electrically.
- A set of conductors, if it conducts optically.

The pairs or conductors are grouped into bundles to create a connection with a cable device.

The cables connect the cable devices together.

Opposites

[Cable device](#)

Table in the Asset Manager database that describes these objects

Cables (amCable)

Cable with its pairs and its wires - photo



Trace

Succession of links (in the logical sense) between cables and cable devices.

Opposites

This is opposite to [Cabling path](#), which describes the cabling in a physical sense.

Color code

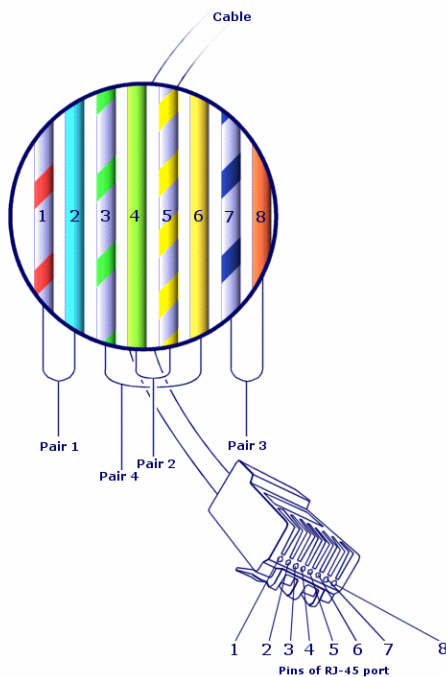
We use color codes in order find and distinguish between:

- A wire pair
- And a connector pin

Each wire and each pin are associated with a color code entry which identifies the wire.

When you create pairs using the **Create pairs** wizard, the wizard automatically assigns a color code entry to each created pair according to the pair's **Sequential number** field.

Color code - relation between cable wires, connector pins and colors.



If we take the **RJ-45** connector, each pin is associated with a wire having a given color and a given duty:

Color codes - description for an RJ-45 connector

Pin number	Color of the associated pair.	Colors of the tip wire	Colors of the ring wire	Function
1	orange	white/blue	orange	Data transmission +
2	orange	white/orange	orange	Data transmission -
3	green	white/green	green	Data reception +
4	blue	white/blue	blue	Voice transmission +
5	blue	white/blue	blue	Voice transmission -
6	green	white/green	green	Data reception -
7	brown	white/brown	brown	Voice reception +
8	brown	white/brown	brown	Voice reception -

Table in the Asset Manager database that describes these objects

Color codes (amColorCode)

Column

Vertical axis of a termination field.

Opposites

[Line](#)

Trace output

Description of a trace.

Table in the Asset Manager database that describes these objects
Trace outputs (amTraceOutput)

Termination-field configuration

Defines the typical organization of a termination field type. Specifically:

- The duty assigned to each row or column of the termination field.
- The role assigned to each row or column of the termination field (and as a consequence, the roles of the cable devices that are there).

The termination-field configuration is used by the cabling wizards to automate the creation of termination fields (with their devices).

Examples

A termination field with 2 columns and 6 row will have 12 duties (voice or data, for example) and 6 roles (riser or lateral, for example).

Table in the Asset Manager database that describes these objects
Termination field configurations (amTermFldConfig)

Cable device

The cable devices corresponding to the network components that are not cables.

The cable devices that connect to the cables and cable devices using:

- Pins, if it conducts electrically.
- Terminals, if it conducts optically.

The pins or connectors are grouped into ports to create a connection with the cable bundle or the port of another cable device.

Examples

- Controller card
- Wall outlets
- Patch panels
- Switches
- Hubs

Synonyms

Cable equipment

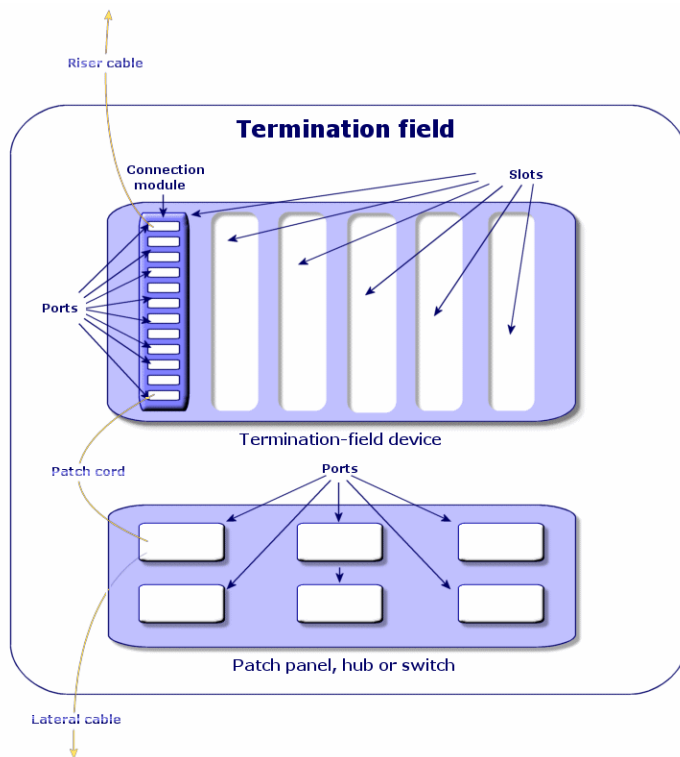
Tables in the Asset Manager database that describe these objects

Assets (amAsset)

Slot

The slot of a cable device in which you can introduce an extension card or module. These are, themselves, cable devices and create cable links with other cables or cable devices.

Cable device slots - representation



Examples

A **HP ProCurve 10/100 Base T - 8 ports** module which inserts itself in a **ProCurve Switch 4000 M - 10 slots** switch.

Synonyms

Expansion connector

Tables in the Asset Manager database that describe these objects

- **Slots (amSlot)**
- **Model slots (amModelSlot)**

Color code entry

One of the colors of a color code.

Each color code entry can be associated with:

- Cable pairs/conductors
- Cable-device port pins

Tables in the Asset Manager database that describe these objects

Color code entries (amColorDet)

Topology step

One of the cable links to create in order to lay out a topology. The steps of a topology are ordered.

Tables in the Asset Manager database that describe these objects

Topology steps (amTopologyDet)

Label

An identifier, in the cable network, of the:

- Cable devices
- Bundles
- Cables
- Pins/ terminals
- Pairs/conductors
- Ports
- Links

They are created in the database, then physically attached to these components to locate and identify them.

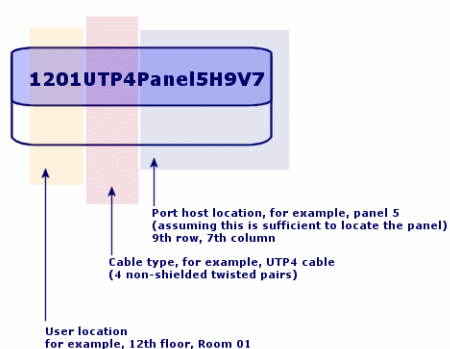
Labels are created using label rules.

The label must best represent the item that it identifies. The label rule can create, for example, labels using the following information:

- Location of the host and the user.
- Host and user ports (identifier of the asset and the port).
- Type of cable or device (4 pairs, patch panel, and so on).

The corresponding label is presented in the following form:

Cable label - example



Bundle

Sub-set of pairs of a cable to which we assign a particular duty. The bundles are used for the creation of cable links between a cable and a cable device: We link a bundle of the cable to a port of the device. We make sure that the duty of the bundle is the same as the one of the port.

Tables in the Asset Manager database that describe these objects

Cable bundles (amCableBundle)

Duty

Type of data transported or processed by a:

- Cable bundle
- Cable device port
- Cable link

Duties are used by the cabling wizards that create links. They enable the wizards to reconcile a ports with bundles performing the same duty.

A duty is also assigned to a:

- Termination-field configuration slot: in order that this duty be propagated to the level of the ports of the device that is created there.
- A topology: in order that this duty be searched for or populated at the level of the bundles and ports to use in laying out a topology.
- A trace: to represent the duty fulfilled by the links, ports and bundles that compose the trace.

Examples

- Data
- Voice
- Video

Tables in the Asset Manager database that describe these objects

Cable duties (amCableDuty)

Topology group

A topology group brings together several topologies. The groups of topologies are used by the cabling wizards to automate the creation of cables, cable devices and cable links.

A topology group can, for example, regroup a topology for the creation of each of the following items:

- Fax link
- Telephone link
- LAN link

A topology group describes a standard configuration of the cable network. You can define different topology groups according to their location, for example.

Tables in the Asset Manager database that describe these objects

Topology groups (amTopologyGroup)

Host

This concept is used to define the direction of a trace. This determines which cable links will be hosts (parents) of other cable links when the wizards create the links between cables and/or cable devices.

In general the host direction is the one that goes to the main termination field.

Opposites

User

Cross connection

An action that consists of linking together network items (cables and cable devices).

Cable link

A cable link represents in Asset Manager the connection point at the level of a cable device (port) or cable (bundle). The succession of the links enables you to constitute a trace.

Tables in the Asset Manager database that describe these objects

Cable links (amCableLink)

Line

Horizontal axis of a termination field

Opposites

[Column](#)

Ring

A jack outlet is composed of a **tip** and a **ring**, which are opposites. The jack connector uses a 2-pair cable. One of this cable's wires goes to the tip; the other to the ring. Thus, the **tip** and the **ring** help distinguish the two wires in a pair, no matter how many pairs there are in a cable.

Opposites

[Tip](#)

Pair/conductor

Data transmission media. Can be optic fiber or a pair of electric wires.

Tables in the Asset Manager database that describe these objects**Cable pairs/conductors (amCablePair)**

Tip

A jack outlet is composed of a **tip** and a **ring**, which are opposites. The jack connector uses a 2-pair cable. One of this cable's wires goes to the tip; the other to the ring. Thus, the **tip** and the **ring** help distinguish the two wires in a pair, no matter how many pairs there are in a cable.

Opposites

[Ring](#)

Port

Slot used to transfer data into and out of a cable device.

In the Cable and Circuit module, the ports serve as the connection point with another port or a cable bundle when the cable links are created.

Tables in the Asset Manager database that describe these objects

- **Ports (amPort)**
- **Model ports (amModelPort)**

Opposites

Port is one of the two connection modes, opposite of the **Pin** connection mode.

Label rule

Formula for the composition of labels destined for the following items:

- Cable devices
- Bundles
- Cables
- Pins/ terminals

- Pairs/conductors
- Ports
- Links

These labels, except for those for the cable links, enable you to physically locate and identify components in a precise manner.

The label for the cable link helps you rapidly view what the link represents.

The calculation formulas are composed using Basic script.

Contrary to the default values of the fields, the label rules are never applied automatically. You must use a wizard for this.

Synonyms

None

Tables in the Asset Manager database that describe these objects

Label rules (amLabelRule)

Termination field

Designates a cable distribution entity that enables you to link the cables coming from users to the cables going to hosts.

A termination field can be composed of:

- Patch panels
- Hubs
- Punchdown blocks
- Switches
- Etc.

Synonyms

Patch panel

Tables in the Asset Manager database that describe these objects

Termination fields (amTermField)

Role

The role corresponds to the part of the network that a cable serves.

The roles are associated to the following items:

- Cables
- Termination-field device models
- Termination-field devices
- Cables in a topology step

The role enables certain cabling wizards to create adequate connections between cable devices and cables.

To do this, the wizards match the roles of the:

- Topology steps
- Cables
- Termination-field configurations
- Termination field devices

Example of how this works

If, using a wizard that runs cables, you create cables whose roles are **Riser**, Asset Manager will automatically connect these cables to a device included in a termination field column whose role is also **Riser**.

Examples of roles

- Lateral (termination field to user equipment).
- Riser (termination field to another termination field).

Tables in the Asset Manager database that describe these objects

Itemized lists (amlItemizedList)

Sequence

Ordered number to identify items from numerous tables of the Asset Manager application.

Terminal

See **Pin/ Terminal**.

Topology

A topology groups together the necessary data to automate the creation of a link:

- Links to create.
- Cables and cable devices to look for or create.

Examples

A topology describing the link that links a user to the telephone network (wall outlet -> cable -> patch panel).

Tables in the Asset Manager database that describe these objects

Topologies (amTopology)

Cable type

A cable type qualifies the models and the topology steps. This enables the cabling wizards to find or create the right type of cable from the topology step.

Examples

Twisted pairs

Tables in the Asset Manager database that describe these objects

Itemized lists (amItemizedList)

Connection type

A connection type represents a mode of connection between components of the cable network.

Example: RJ-45, RJ-11, Block of 4 pairs, and so on.

It is a physical description of the pins of a port or the terminal fields of a connector.

Examples:

- The ports of the workstations, PABX or servers.
- Wall-mounted telephone sockets (RJ-45, RJ-9 sockets)
- The terminals of the termination-field punchdown blocks (CAD, RAC IBM).

The connection type enables the cabling wizards to:

- Find the ports of a cable device that correspond to the connection type defined in a topology step.
- Or to create virtual ports of the given type if necessary.

Tables in the Asset Manager database that describe these objects

Cable connection types (amCabCnxType)

RJ-45 connector - photo



Cable device type

The device type qualifies the models and the topology steps. This enables the cabling wizards to find or create the right type of cable device from a topology step.

Examples

- Switch module
- Patch panel
- Wall outlet
- Switch

Example of use

Let's suppose that you created a connection between a cable and a cable device whose connection type is **XXX** (Connection mode = **Pins**, number of pins/connectors = **8**). Once the 8 pins of the terminal of the cable device are associated to a wire, Asset Manager automatically creates a virtual port.

Tables in the Asset Manager database that describe these objects**Itemized lists (amItemizedList)**

Pair/Conductor type

A pair or conductor type is defined by its name and the number of physical conductors that compose it.

The pair/conductor type enables the cabling wizards to find the pairs/conductors of a cable that correspond to the type defined in a topology step. The pairs/conductors thus selected are grouped together in the form of a virtual bundle, and these virtual bundles are associated to ports (in a cable link).

Examples

Copper, 2 conductors

Tables in the Asset Manager database that describe these objects**Pair/conductor types (amCablePairType)**

Slot type

The slot type defines which extension models or module it is possible to insert in a given slot of a cable device.

This link is used when you select an asset for the slot of a cable device: Only the assets whose model is compatible with the slot type are proposed.

Tables in the Asset Manager database that describe these objects**Slot types (amSlotType)**

User

This concept is used to define the direction of a trace. This determines which cable links will be users (sub-links) of other cable links when the wizards create the links between cables and/or cable devices.

In general the user direction is the one that goes to the user's wall outlet.

Opposites

[Host](#)

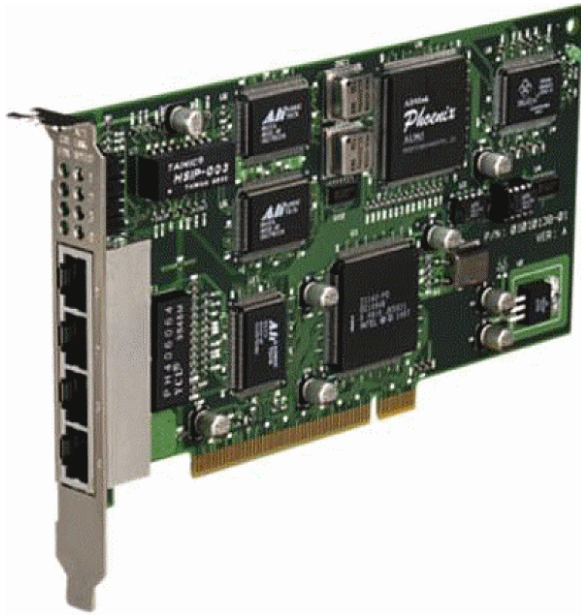
Key terms of the profession (Cable and Circuit)

Adapter	179
Rack	180
Punchdown block	181
Chassis	182
Cabling path	182
Converter	182
Vertical distribution	182
Lateral distribution	183
Hub	184
Jumper/ Patch cord	185
Length	185
Patch panel	185
Wall outlet	186
Main termination field	186
Repeater	186
Riser	186
Router	187
Wallfield	187
Switch	187
Run (a cable)	188
Run	188

Adapter

Set of male and female connectors that enable a cable device to use a peripheral for which it doesn't have the necessary circuits and connections: models, CD-ROM drives. The adapters go into the expansion slots.

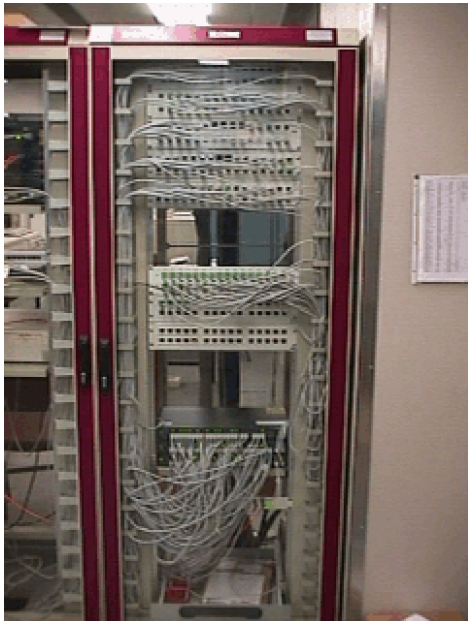
Adapter - photo



Rack

Storage unit that contains the cable distribution devices.

Rack - photo



Punchdown block

A box enabling you to connect the wires of a cable to a port to facilitate the connection with the cable.

Punchdown block - photos



Chassis

Metal frame upon which cable devices are mounted.

Cabling path

Physical path of the cable, which is opposite of the trace, which provides the logical path.

Opposites

[Trace](#) (logic)

Converter

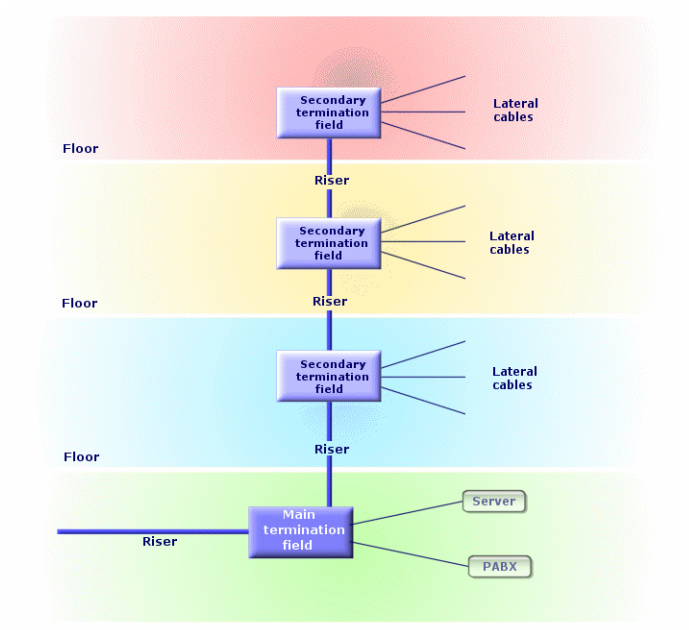
Device that:

- Changes the electronic signals or the IT data from one form into another.
Example: An **ADC** converter that translates analog signals to digital signals.
- Connects equipment with incompatible interfaces.
- Converts the signal coming from one cable type to transmit it to another cable type.

Vertical distribution

Distribution of the cables between different termination fields. The cables linking the termination fields are generally composed of numerous pairs, and are named risers.

Vertical distribution of a cable network - representation



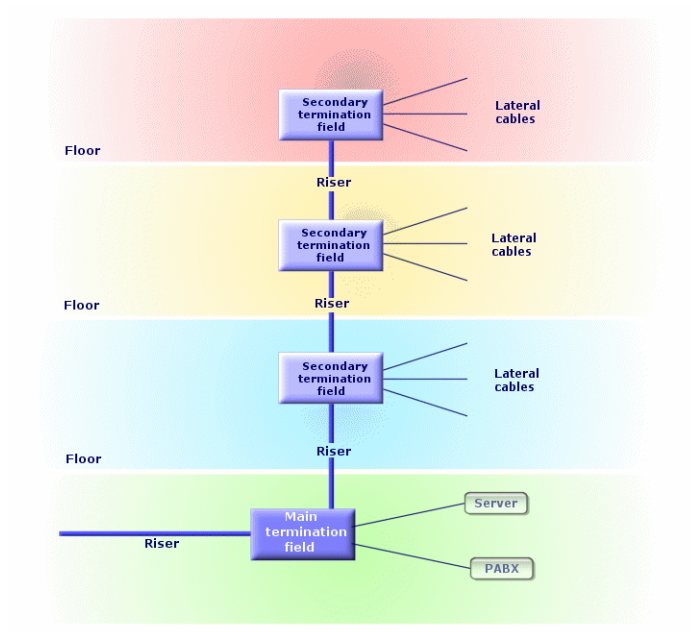
Opposites

Lateral distribution

Lateral distribution

Distribution of the cables between the users and the termination fields.

Lateral distribution of a cable network - representation



Synonyms

Horizontal distribution

Opposites

Vertical distribution

Hub

The hub is a box where cables come in from computers, servers, printers and other peripheral devices. It establishes communication between different network users.

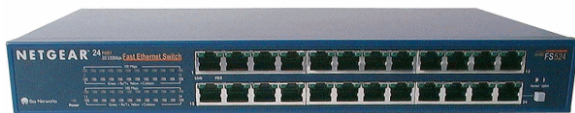
There are passive hubs that are nothing more than simple **multiple outlet adapter**, which do not modify the signals going through them.

Then there are active hubs that regenerate the signals, thus eliminating the possible errors that can occur due to the distance or the electrical interference.

It is possible to connect several hubs together, thus expanding the existing network.

Hubs do not intervene in the transmission of messages. When a computer sends information, the hub transmits it to all the other computers, and only the computer for whom the message was intended will process it. If the message's receiver sends a response, the hub transmits this message to everyone as well: Again, only the computer for whom the message was intended will receive it. The authorized debit on the network is divided between the number of computers or peripheral devices that "communicate" at the same time.

Hub - photo



Synonyms

- Concentrator
- Multiplexer

Jumper/ Patch cord

Short cord used to establish a permanent, yet modifiable, connection between devices and termination fields.

Patch cord - photo



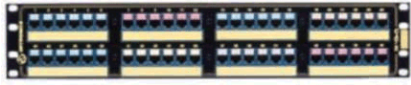
Length

Dimension of a cable.

Patch panel

Device of a termination field situated in the proximity of hubs, switches, and so on. It comes in between them and the cables distributed throughout the location. The cables connect to the back of the patch panels. To each cable corresponds a connector on the panel. The other sides of the cables are linked to a wall outlet in an office. We use jumpers to link the panel's connectors (front side) to the ports of the termination field's active item.

Patch panel - photo



Synonyms

Interconnect

Wall outlet

Device that enables a male connector of a cable (of a computer, peripheral device, or telephone) to connect to the network.

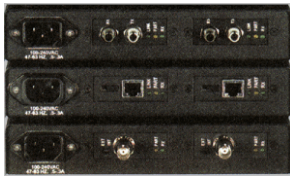
Main termination field

Processed in Asset Manager as a termination field.

Repeater

Device used to reduce distortion by amplifying or regenerating a signal so that it can be transmitted farther with its original form and intensity. On the network, it connects two networks - or two segments of the network - at the level of the physical layer of the OSI model and regenerates the signal.

Repeater - photo



Synonyms

Regenerator

Riser

Vertical distribution cable (between floors or buildings).

Router

Even more **intelligent** than switches, the router is generally used to connect different networks together, for example, a company's internal network to the Internet network. These are veritable computers capable of filtering information according to criteria established by the user. They know how to direct information to a destination via the available paths and by choosing the most appropriate itinerary. They also know how to make two different types of networks, using different types of communication protocols, coexist.

Router - photo



Wallfield

Dealt with in Asset Manager as a termination field.

Switch

Like a hub, it also concentrates the cables coming from all the computers and peripheral devices of the network. Unlike a hub, the switch has a memory where it stores the addresses of the machines that it connects. When a computer sends a message to another computer, the switch knows who is "communicating" and for whom the information is intended. It sends the data to the destination without having to involve the rest of the network. The target machine receives this data at the same rate as the transmitter.

Switch - photo



Synonyms

PABX

Run (a cable)

Action that consists of laying a cable.

Synonyms

Lay

Run

Section of cable.

Send documentation feedback

If you have comments about this document, you can [contact the documentation team](#) by email. If an email client is configured on this system, click the link above and an email window opens with the following information in the subject line:

Feedback on Cable and Circuit (Asset Manager 9.62)

Just add your feedback to the email and click send.

If no email client is available, copy the information above to a new message in a web mail client, and send your feedback to ovdoc-ITSM@hpe.com.

We appreciate your feedback!