



Hewlett Packard Enterprise Trueview

Release Notes

Release 8.0

First Edition



Hewlett Packard
Enterprise

Notices

Legal notice

© Copyright 2016 Hewlett Packard Enterprise Development LP

Confidential computer software. Valid license from HPE required for possession, use or copying. Consistent with FAR 12.211 and 12.212, Commercial Computer Software, Computer Software Documentation, and Technical Data for Commercial Items are licensed to the U.S. Government under vendor's standard commercial license.

The information contained herein is subject to change without notice. The only warranties for HPE products and services are set forth in the express warranty statements accompanying such products and services. Nothing herein should be construed as constituting an additional warranty. HPE shall not be liable for technical or editorial errors or omissions contained herein.

Printed in the US

Trademarks

Linux is the registered trademark of Linus Torvalds in the U.S. and other countries.
Oracle and Java are registered trademarks of Oracle and/or its affiliates.

Contents

Notices	1
Preface.....	5
About this guide.....	5
Document history.....	5
Chapter 1 Trueview v.8.0 New Features	6
Chapter 2 Software Operating System	8
Chapter 3 Outstanding Issues.....	9
3.1 Microsoft Internet Explorer 11.....	9
3.1.1 Projects screen.....	9
3.1.2 Package screen.....	9
3.1.3 Reports screen.....	9
Chapter 4 Installation	10
4.1 Clearing Browser Cache.....	10
4.1.1 Internet Explorer (IE) browser.....	10
4.1.2 Firefox browser	12
4.1.3 Google Chrome.....	13
Chapter 5 Verification of signed binary	14
5.1 Installing and Configuring Gnu Privacy Guard (GnuGP).....	14
5.2 Verifying the Authenticity and Integrity of the Software.....	14

List of tables

Table 1: Document history.....	5
--------------------------------	---

List of figures

Figure 1 Internet Explorer Internet options menu.....	10
Figure 2 Internet Explorer Internet options.....	11
Figure 3 IE delete browsing history.....	11
Figure 4 Firefox privacy options.....	12
Figure 5 Firefox clear history window.....	12
Figure 6 Chrome clear browsing data menu.....	13
Figure 7 Chrome clear browser data window.....	13

Preface

About this guide

The purpose of this document is to describe the updates made in Trueview v.8.0.

Document history

Table 1: Document history

Edition	Date	Description
1.0	31 March 2016	First official version.

Chapter 1

Trueview v.8.0 New Features

The following key new features and enhancements are available in Trueview v.8.0:

Inventory

- NFV Support
 - Create/manage virtual network elements (VNF)
 - Link virtual NE to Virtual Machine
 - Consumes CPU, Memory, Disk
 - Virtual Machine
 - Linked to implementing Server
 - Allocated resources from Server: CPU, Memory, Disk
 - Thresholds on utilization
 - Server
 - Define Server resources: CPU, Memory, Disk
 - Resources are utilized by Virtual Machine
 - Thresholds on utilization
- Groups
 - Define groups of NEs, Users or other groups for common operations, etc.
- Contacts
 - Define contact
 - Link to Customer
 - Link to Role(s) (user defined enumeration)
- View Enhancements
 - Automatically created for Customer, linked to customer CFS
 - Additional filtering capabilities, e.g. by technology and service type, signal type show locations

Orchestration

- Processes, Tasks
 - Delay/hold management of specific process tasks
 - Ability to assign specific users to task workgroups
 - Start and complete tasks from Process Task list, Task search results or user dashboard
 - Automate tasks through linkage to DigitalBridge™ transactions in process template definition
 - Link tasks to Service Request definable milestones in process template definition
 - Task search capability

Customer Portal

- Incidents
 - Ability to create an incident record and link it to a service
 - Allow integration to external incident ticketing systems
- User Dashboard
 - Display 'My Services', 'My Tasks', 'My Processes', 'My Requests' with filtering capability
 - Links to related entities and operations from the dashboard

Other

- Administration
 - View and manage user sessions
 - View system statistics (uptime, memory, threads, etc.)
- Email notification on specific events
- Enhanced User Defined Attribute functionality
 - New types added, e.g.:
 - E.g. Integer, Decimal, Long, Date, Timestamp
 - Enumeration
 - Define values in definition or link to user defined or core enumeration
 - Link UDA to Contact Role
 - Define grouping of UDAs and group title associated entity display

ESI

- ESI has been enhanced to provide support for added functionality where required.

Chapter 2

Software Operating System

Trueview v.8.0 has been certified for operation in the following environments:

- Operating System:
 - Sun Solaris 11
 - HPUX 11
 - Red Hat Enterprise Linux 7.1
- Web servers:
 - WebLogic 12.1.2
 - JBOSS 6.2.1
- Databases:
 - Oracle 12c (12.1.0.2.0)
 - PostgreSQL 9.1
- Browsers:
 - Internet Explorer 11
 - Firefox 42
 - Chrome 46
- Java 1.7

Chapter 3

Outstanding Issues

3.1 Microsoft Internet Explorer 11

3.1.1 Projects screen

Issue

Open a project. Under the Tasks --> Gantt Chart tab, the contents of the chart do not initially appear.

Workaround

The user must manually click the Refresh button in order for the contents of the Gantt Chart to appear.

3.1.2 Package screen

Screen

Configuration --> Workbench --> Package

Issue

Cannot import a custom package.

Workaround

Use Firefox or Chrome

3.1.3 Reports screen

Screen

Configuration --> Workbench --> Reports

Issue

Cannot upload a template to a report.

Workaround

Use Firefox or Chrome

Chapter 4

Installation

Installation and configuration of the Trueview v.8.0 product components are described in the documentation provided with the software release and during deployment.



IMPORTANT: Ensure that all data is backed up before performing any application upgrades.

4.1 Clearing Browser Cache

Trueview v.8.0 may be installed with customized branding to include the logos, user interface colors or custom browser title for a specific customer. If the customized branding does not appear on the login screen, the browser cookies or cache must be cleared. Please follow the steps below to clear browser cache.

4.1.1 Internet Explorer (IE) browser

1. In the top right corner of the screen, click on the  button and select **Internet options** (see figure below).

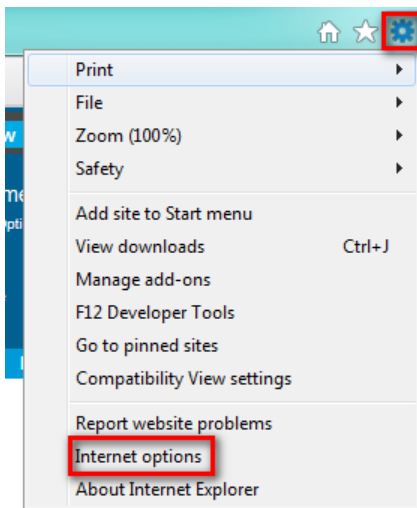


Figure 1 Internet Explorer Internet options menu

2. In the “Internet Options” window, make sure that the General tab is selected.
3. In the “Browsing history” section of the General tab, click on the Delete... button.

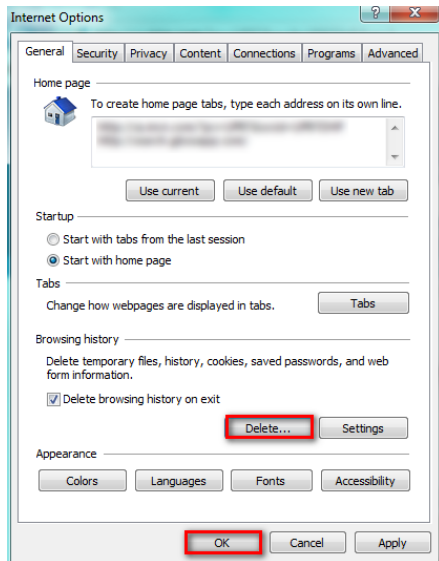


Figure 2 Internet Explorer Internet options

4. In the “Delete Browsing History” window, verify that the “Temporary Internet Files” option is checked and click the Delete button.

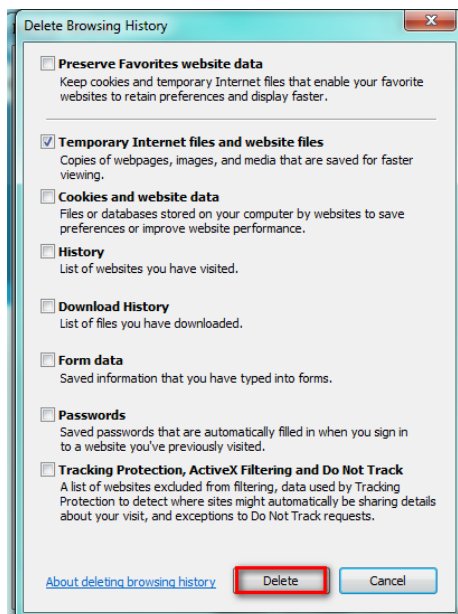


Figure 3 IE delete browsing history

5. Click OK on the “Internet Options” window to close it.

4.1.2 Firefox browser

1. In the Firefox menu, Select Options→Privacy.

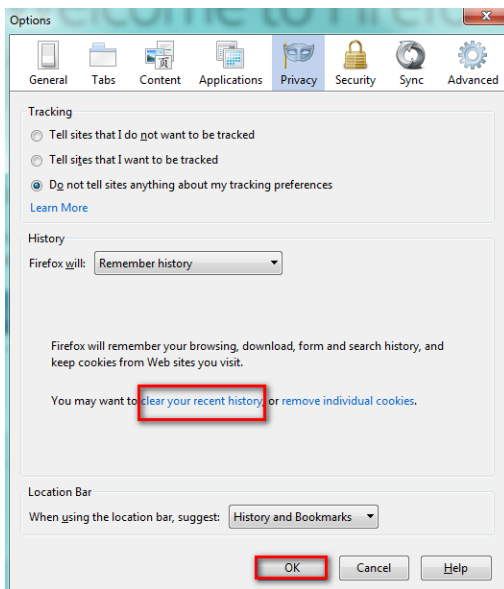


Figure 4 Firefox privacy options

2. In the History section, click on 'Clear All History'.
3. In the "Clear All History" pop-up window, select the Cache window only and select the Clear Now button.

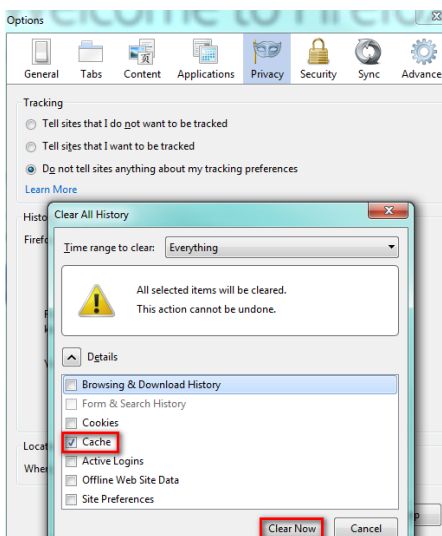


Figure 5 Firefox clear history window

4. Click the Close button to exit the window.

4.1.3 Google Chrome

1. In the Google Chrome menu select **Tools**→ **Clear Browsing Data**.

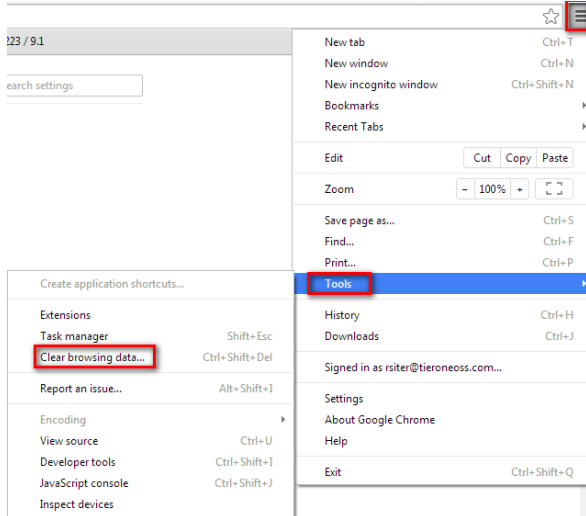


Figure 6 Chrome clear browsing data menu

2. From the Clear Browsing Data pop-up window select the Caches images and files box, and select the Clear browsing data button.

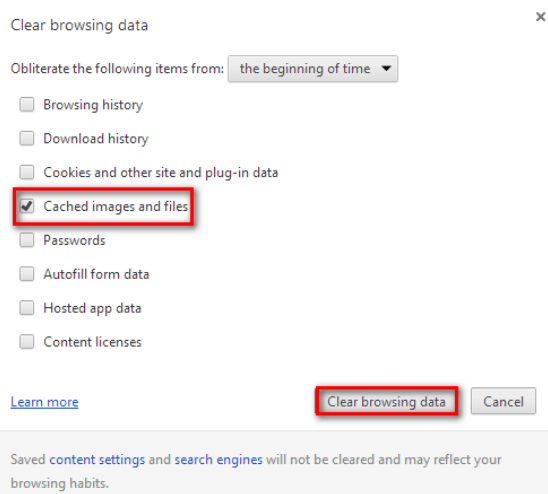


Figure 7 Chrome clear browser data window

3. The pop-up window will close automatically.

Chapter 5

Verification of signed binary

This Software Product from Hewlett Packard Enterprise is digitally signed and accompanied by Gnu Privacy Guard (GnuPG) signatures. Hewlett Packard Enterprise strongly recommends using signature verification on its products, but there is no obligation. Customers will have the choice of running this verification or not as per their IT Policies.

5.1 Installing and Configuring Gnu Privacy Guard (GnuGP)

If you do not already have GnuGP installed, you will first need to download and install it. For information about obtaining and installing GnuGP, see <http://www.gnupg.org>.

Before verifying the signatures delivered on the HPE Service Activator DVD, you need to configure GnuGP for accepting signatures from Hewlett Packard Enterprise. To do this, follow these steps:

1. Log on your system.
2. Get the all public keys from following location:
<https://h20392.www2.hp.com/portal/swdepot/displayProductInfo.do?productNumber=HPLinuxCodeSigning>
3. Save the keys as `HP-RPM-GPG-1024-KEY.pub`, `HP-RPM-GPG-2048-KEY.pub`, `HP-RPM-GPG-2048-KEY-1.pub`, `HP-RPM-GPG-2048-KEY-2.pub`, `HP-RPM-GPG-2048-KEY-3.pub`, `HP-RPM-GPG-2048-KEY-4.pub`, and `HP-RPM-GPG-2048-KEY-5.pub`, respectively.
4. Import the key into GnuPG by running these commands:

```
gpg --import HP-RPM-GPG-1024-KEY.pub
gpg --import HP-RPM-GPG-2048-KEY.pub
gpg --import HP-RPM-GPG-2048-KEY-1.pub
gpg --import HP-RPM-GPG-2048-KEY-2.pub
gpg --import HP-RPM-GPG-2048-KEY-3.pub
gpg --import HP-RPM-GPG-2048-KEY-4.pub
gpg --import HP-RPM-GPG-2048-KEY-5.pub
```

5.2 Verifying the Authenticity and Integrity of the Software

The procedures listed below allow you to assess the integrity of the software before installing it, by verifying the signatures of the software packages.

From a command prompt, go to the `/Binaries` directory on the DVD and run the following command:

```
gpg --verify trueview-8.0-3441.tar.gz.sig trueview-8.0-3441.tar.gz
```

Look for the following output from the `gpg` command:

```
gpg: Good signature from "Hewlett-Packard Company RSA (HP Codesigning Service) - 2"
```

