

WinRunner<sup>®</sup>  
*Installation Guide*  
Version 5.0



MERCURY INTERACTIVE

## WinRunner Installation Guide 5.0

© Copyright 1993-1998 by Mercury Interactive Corporation

All rights reserved. All text and figures included in this publication are the exclusive property of Mercury Interactive Corporation, and may not be copied, reproduced, or used in any way without the express permission in writing of Mercury Interactive. Information in this document is subject to change without notice and does not represent a commitment on the part of Mercury Interactive.

Patents pending.

WinRunner, XRunner, and LoadRunner are registered trademarks of Mercury Interactive Corporation. TestSuite, Astra, Astra SiteManager, Astra SiteTest, RapidTest, TestDirector, QuickTest, Visual Testing, WebTest, Action Tracker, Link Doctor, Change Viewer, Dynamic Scan, Fast Scan, and Visual Web Display are trademarks of Mercury Interactive Corporation.

This document also contains Registered Trademarks, Trademarks and Service Marks that are owned by their respective companies or organizations. Mercury Interactive Corporation disclaims any responsibility for specifying which marks are owned by which companies or organizations.

If you have any comments or suggestions regarding this document, please send them via e-mail to [documentation@mercury.co.il](mailto:documentation@mercury.co.il).

Mercury Interactive Corporation  
1325 Borregas Avenue  
Sunnyvale, CA 94089  
Tel. (408)822-5200 (800) TEST-911  
Fax. (408)822-5300

---

# Table of Contents

Before You Install .....	1
Checking Your WinRunner Package .....	1
Registering Your Copy of WinRunner .....	2
System Configuration.....	3
Upgrading from a Previous Version .....	3
Installing on Windows NT .....	3
Installing WinRunner.....	4
Running a Workstation Installation .....	15
Configuring Visual Basic 4.0 Support .....	17
Enabling Table Contents Checks for an OCX Control.....	18
Configuring Visual Basic 5.0 Support .....	20
Preparing Your Visual Basic Application.....	20
Adding WinRunner Components.....	22
Uninstalling WinRunner .....	24



---

# Before You Install

Welcome to WinRunner, Mercury Interactive's automated software testing tool for Windows 95, Windows 98, and Windows NT 4.0. This guide describes everything you need to know to install WinRunner on a standalone computer and on a network. It describes the WinRunner package contents, system configuration, registration and backup procedures, and how to run the setup program.

Before you begin to install WinRunner, please review the following pre-installation procedures.

## Checking Your WinRunner Package

Please make sure that your WinRunner package contains the items described below. If any items are missing or damaged, contact Mercury Interactive or your local distributor.

### Program Disks

Your WinRunner package contains 1 CD-ROM.

### Documentation

In addition to this installation guide, your WinRunner package contains the following printed materials:

- WinRunner Tutorial
- WinRunner User's Guide
- Registration Card

## Registering Your Copy of WinRunner

Register your copy of WinRunner to become a licensed user with all rights and privileges. Registered users have access to technical support and information on all Mercury Interactive products. You will also be eligible for updates and upgrades.

To register your copy of WinRunner, fill out the Mercury Interactive Software Registration card.

- ▶ If you are in the USA, fill out the USA Owners portion of the card. Send the card to the Sunnyvale, California address printed on the card. No postage is necessary.
- ▶ If you are outside the United States, fill out the Non-USA portion of the registration card and send it to the appropriate international address. Affix postage to the card before mailing.

Remember to notify Mercury Interactive or your local representative if you move to a new address, so that you can continue to receive product information and updates.

---

**Note:** You can also register your copy of WinRunner on Mercury Interactive's Customer Support site (<http://web.merc-int.com>).

---

## System Configuration

In order to successfully run WinRunner, you need the following minimum system configuration:

<b>Platform</b>	An IBM-PC or compatible with a 486 microprocessor or higher. For best performance, a 586 microprocessor is recommended.
<b>Memory</b>	At least 16 MB of RAM memory. For best performance, 32 MB is recommended.
<b>Disk Space</b>	At least 29 MB of free disk space for a compact installation or 74 MB for a typical or complete installation. (An additional 5 MB of free disk space are required during the installation process.) Additional disk space is required if you install support for Visual Basic or PowerBuilder applications.
<b>Operating System</b>	Windows 95, Windows 98, or Windows NT 4.0.

## Upgrading from a Previous Version

You can install a standalone version of WinRunner over a previous version. Note that any changes made to the tests in the \lib directory or in any other files will be overwritten. However, the existing \lib directory will be backed up as \lib.bak. Note that if lib.bak already exists, the existing \lib directory will not be backed up. It is recommended that you save separately any files that you added or changed manually before installing WinRunner 5.0 over a previous WinRunner installation. Note that configuration changes made in the wrun.ini file will not be overwritten when installing WinRunner 5.0.

## Installing on Windows NT

If you are installing WinRunner on a Windows NT machine, make sure you have administrator permissions before you run the setup program. If you try to install WinRunner on a Windows NT machine without administrator privileges, you will receive a warning message and the setup program closes.

# Installing WinRunner

You can install WinRunner on a local computer or on a network drive. Following are the main steps for each type of installation:

## Standalone Installation

- Install WinRunner using the Standalone option.
- If you are testing a Visual Basic application, configure Visual Basic support.

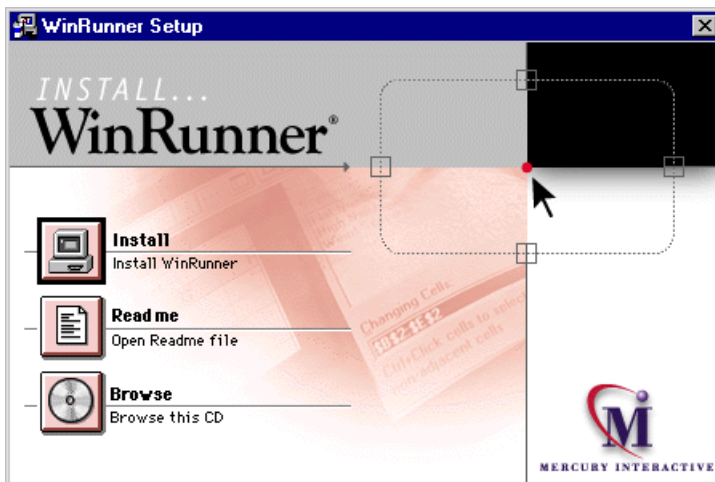
## Network Installation

- Install WinRunner using the Network option.
- Run the workstation installation on each user workstation.
- If you are testing a Visual Basic application, configure Visual Basic support.



To install WinRunner:

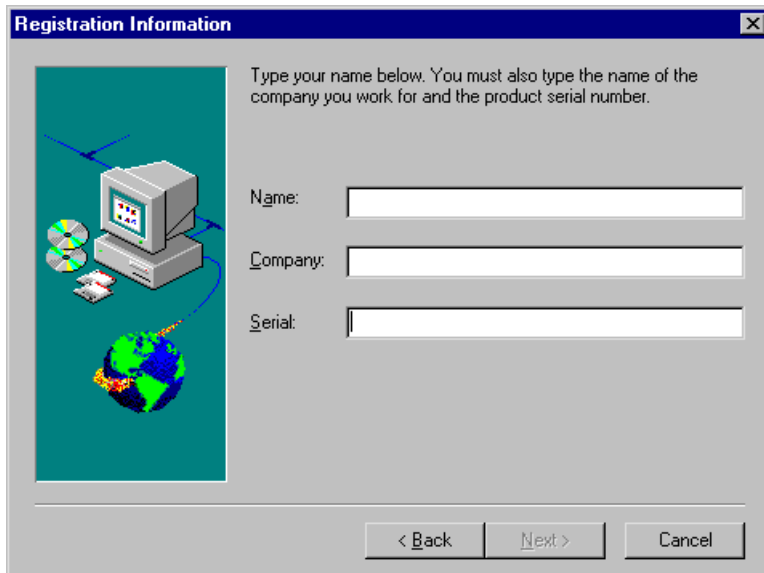
- 1 Insert the CD-ROM into the drive from which you want to install. If the CD drive is on your local machine, the WinRunner Setup window opens. If you are installing from a network drive, connect to it and run *autorun.exe* under the \setup subdirectory.



If you want to view the Readme file, click Readme. If you want to browse the WinRunner Installation CD, click Browse.

- 2 Click Install. The WinRunner setup program starts. The WinRunner Setup splash screen and the Setup progress bar open.
- 3 The software license agreement appears. To accept the terms of the license agreement, click Yes. If you click No, the setup program will close. To install WinRunner, you must accept the license agreement.

- 4 In the Registration Information dialog box, type your name, the name of your company, and a WinRunner serial number. You can find this number on the outside of your WinRunner box.



Click Next to proceed.

- 5 Click Yes to confirm the registration information.

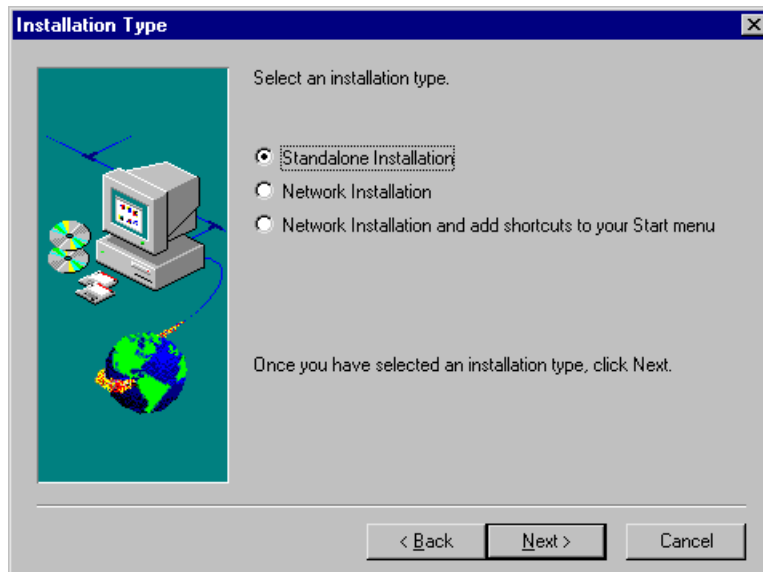
6 Do one of the following:

- To install on a hard disk of a local computer, select Standalone Installation.
- To install on a network drive, select Network Installation.
- To install on a network drive and configure your workstation to run WinRunner from the network, select the third option.

---

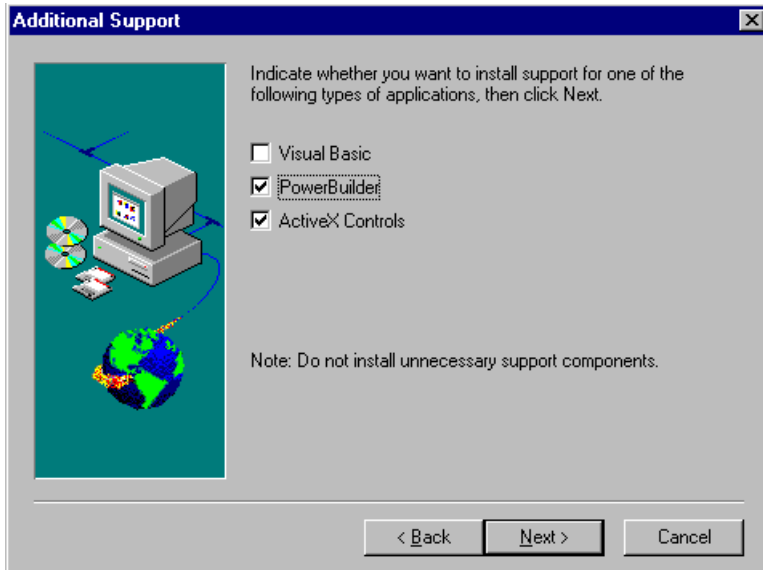
**Note:** You cannot install a network installation over a previous version of WinRunner.

---



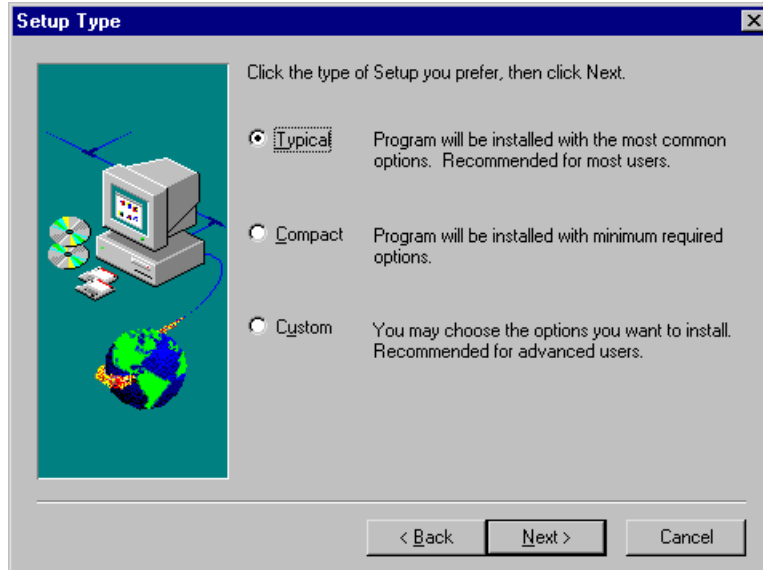
Click Next to proceed.

- 7 If relevant, install additional support for Visual Basic applications, PowerBuilder applications, and ActiveX controls.



Click Next to proceed.

## 8 Choose the type of installation: Typical, Compact, or Custom.



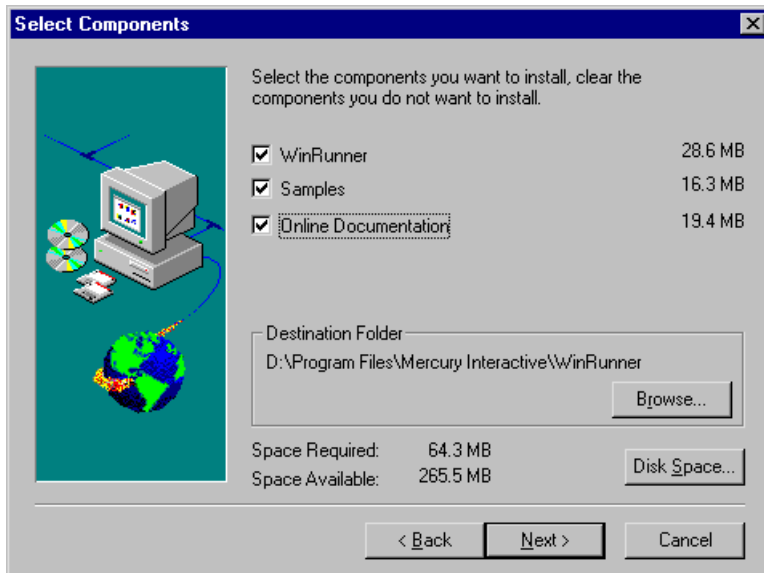
**Typical Installation** installs commonly-used program files, including online documentation and samples.

**Compact Installation** installs only the required WinRunner program files, without online documentation or samples.

**Custom Installation** enables you to select the components you want to install.

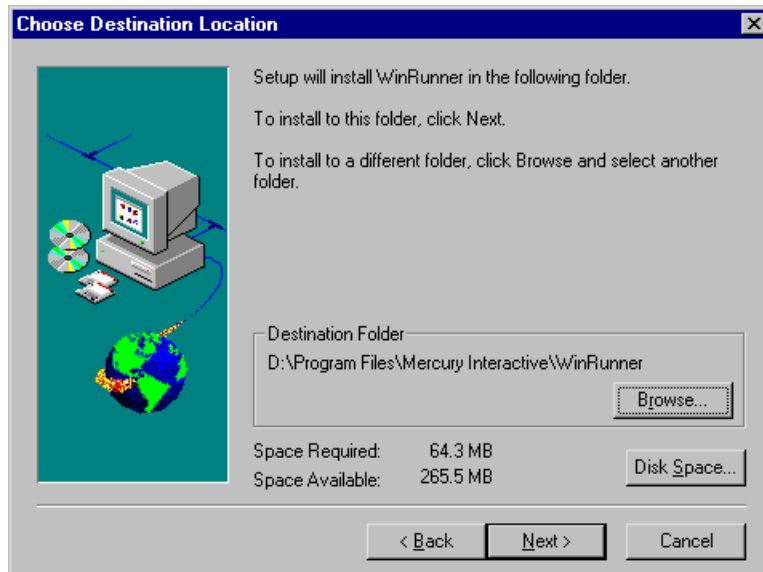
Click Next to proceed.

- 9 If you chose Custom Installation, select the components you want to install and specify the destination folder. To check the space available on a disk drive, click Disk Space.



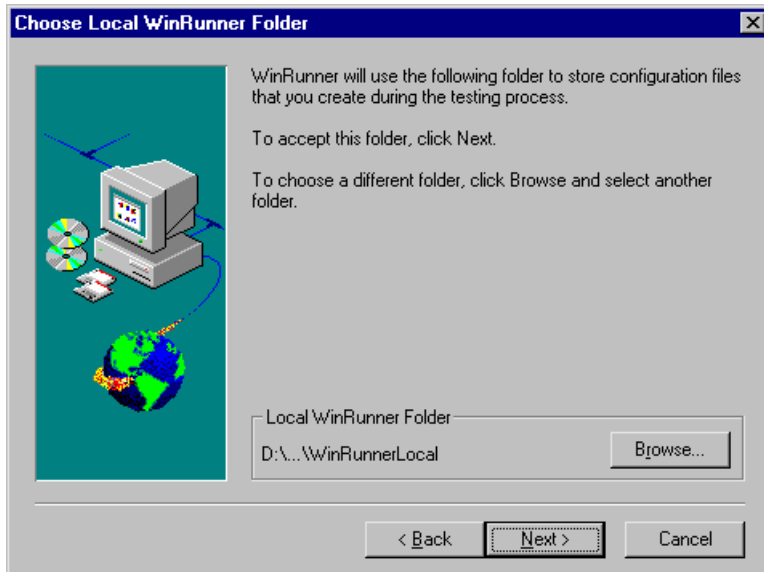
Click Next to proceed.

- 10 If you chose Typical or Compact Installation, specify the destination folder. To check the space available on a disk drive, click Disk Space.



Click Next to proceed.

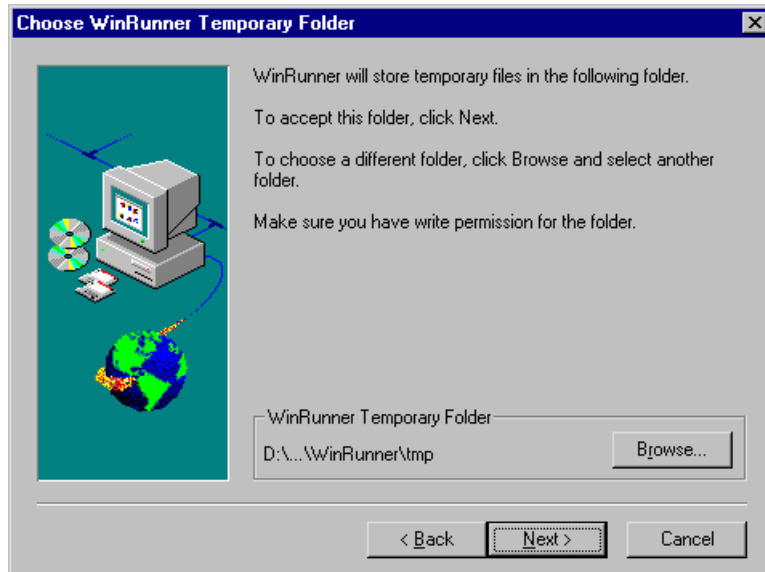
- 11 If you selected **Network Installation** and add shortcuts to your Start menu earlier in the setup, select a location for the local WinRunner folder. This folder will allow you to configure WinRunner to meet your specific testing requirements, while running a shared version over the network.



Click Next to proceed.



12 Choose the location of your WinRunner temporary folder.

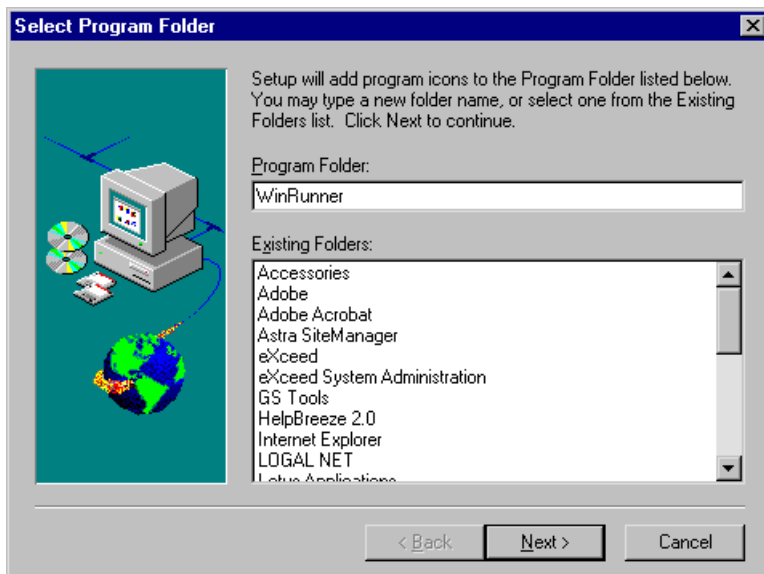


Click Next to proceed.

13 Review the settings you selected. To select different settings, click Back. To confirm the settings, click Next.

The installation process begins. To pause or quit the installation process, click Cancel.

14 Select the program folder for the WinRunner icons.



Click Next to proceed.

- 15 Read the information about accessing online documentation. If you installed additional support for Visual Basic, PowerBuilder, or ActiveX controls, more information appears on your screen. Click Next to proceed.
- 16 Read the information about Mercury Interactive's Customer Support. Click Next to proceed.
- 17 The installation process is complete. If you installed WinRunner on your hard disk (Standalone option), you need to restart your computer. If you installed WinRunner on the network, run a workstation installation on all workstations. See the next section for details.
  - ▶ To read what's new in WinRunner and any last-minute information, click Programs > WinRunner > Read Me on the Start menu.
  - ▶ To view the WinRunner online books, you must have Acrobat Reader 3.01 installed. You can install it by clicking Programs > WinRunner > Documentation > Acrobat Reader 3.01 Setup on the Start menu. To view online books, click the WinRunner Books Online command.



- To start WinRunner, click Programs > WinRunner > WinRunner on the Start menu.

## Running a Workstation Installation

A workstation installation should be performed for each user running WinRunner from the network. This installation can be performed only after the network installation is successfully completed.

- 1 Choose Run on the Start menu.
- 2 Type *installation\_directory*\setup\setup.exe and click OK.
- 3 The software license agreement appears. To accept the terms of the license agreement, click Yes. If you click No, the setup program will close. To install WinRunner, you must accept the license agreement.
- 4 In the User Information dialog box, type your name and click Next to proceed.
- 5 Click Yes to confirm the registration information.
- 6 Confirm the workstation installation message and click Next to proceed.
- 7 Define the location for the local WinRunner folder.

The WinRunner folder on your hard drive is used to store configuration files you create during the testing process. Configuration files in this folder override configuration files of the same name on the network. This enables you to configure WinRunner to your specific testing requirements.

Click Next to proceed.

- 8 Select the location of your WinRunner temporary folder. The installation process begins. To pause or quit the installation, click Cancel.

Click Next to proceed.

- 9 Define the program group for the WinRunner icons.

Click Next to proceed.

- 10 Restart your computer. The WinRunner program folder is added to your Start menu.

- To read what's new in WinRunner and any last-minute information, click Programs > WinRunner > Read Me on the Start menu.
- To view the WinRunner online books, you must have Acrobat Reader 3.01 installed. You can install it by clicking Programs > WinRunner > Documentation > Acrobat Reader 3.01 Setup on the Start menu. To view online books, click the WinRunner Books Online command.



- To start WinRunner, click Programs > WinRunner > WinRunner on the Start menu.

---

# Configuring Visual Basic 4.0 Support

Before you can start using WinRunner's extended support for Visual Basic 4.0 in Windows 95, Windows 98, or Windows NT Visual Basic applications (32-bit), you need to compile the WinRunner OCX (wrvb40.ocx) in the application under test.

To configure 32-bit Visual Basic 4.0 support:

- 1 Start Visual Basic 4.0 and open the project.
- 2 Select the Custom Controls command from the Tools menu.
- 3 In the Custom Controls dialog box, select the Wrvb40 OLE Custom Control Module item. Click OK. The item is added to the toolbar.
- 4 Drag the new item onto the main application form.
- 5 Right-click this object and select View Code.
- 6 Select Form from the Object pulldown.
- 7 Insert the following line into the beginning of the Form\_Load function:

```
Wrvb1.Init Forms
```

For example:

```
Private Sub Form Load ()  
...  
Wrvb1.Init Forms  
...  
End Sub
```

- 8 Run or recompile your application and run the .exe file.

## Enabling Table Contents Checks for an OCX Control

To enable support for contents verification on any OCX that can be viewed as a table object, you must implement a capture function for the OCX in Visual Basic and then execute a TSL function.

WinRunner includes Visual Basic project files (*wrvbsrv4.vbp* for Visual Basic 4.0 and *wrvbsrv5.vbp* for Visual Basic 5.0) that compile into an OLE Automation Server. WinRunner uses this server to capture table contents.

Follow these steps to enable contents verification on an OCX that can be viewed as a table object:

- 1 Start Visual Basic 4.0 or Visual Basic 5.0.
- 2 In Visual Basic, open the appropriate wrvbsrv project file (*wrvbsrv4.vbp* or *wrvbsrv5.vbp*) located in the WinRunner installation folder under `custom\wrvbsrv`.
- 3 Open `capture.cls` and add a Sub with the following prototype:

```
Public Sub<CaptureFunctionName>(ByVal <tab_ctrl> As Object, ByVal  
<file_name> As String)
```

The function should dump the table contents of the OCX control into `<file_name>` in the following format:

cells separated by `Tab(Chr(9))`, rows separated by `Newline`.

---

**Note:** Cell data should not contain escape characters such as Tabs or Newlines. Cells in the first row (Column Titles) should not contain either escape characters or space characters. See the `MSGridCapture` Sub for an example.

---

- 4 Compile the project into a dll.

For Visual Basic 4.0, from the File menu select `Make OLE DLL file`.

For Visual Basic 5.0, from the File menu select `Make WRVBSRV DLL file`.

- 5 In WinRunner, execute the **ole\_add\_class\_to\_gui\_ver** TSL function. Set the “Table Capture” argument to the name of the Sub you implemented in the Visual Basic function. For example:

```
ole_add_class_to_gui_ver ("MSGrid.Grid", "Enabled", "MSGridCaptureFunc");
```

For more information on **ole\_add\_class\_to\_gui\_ver**, refer to the *TSL Online Reference*.

# Configuring Visual Basic 5.0 Support

WinRunner's add-in support for Visual Basic 5.0 applications includes all the support provided for Visual Basic 4.0 applications, plus:

- ▶ all standard Visual Basic 5.0 controls
- ▶ Visual Basic projects that create ActiveX controls

## Preparing Your Visual Basic Application

Before you can start testing a Visual Basic application using WinRunner's add-in support for Visual Basic 5.0, the application developer must add the WinRunner agent to the application. To do so, the developer runs the `setup.exe` program from the `\vbdev` directory on the WinRunner installation CD-ROM.

Note that if the application currently references the WinRunner OCX, you must first remove all references from forms, as well as the associated code (`Wrb1.Init Forms`).

The WinRunner agent installation installs an AddIn to your Visual Basic IDE. The name of this AddIn is `WinRunnerAddIn.Connect`. It adds lines of code to your Visual Basic source code.

`WinRunnerAddIn.Connect`

- ▶ adds a reference to the `wrvbas.dll` component
- ▶ adds a new code Module to the Visual Basic project called "WinRunnerSupport"
- ▶ adds a line to the WinRunnerSupport Module:  
`Global asr As New WRVBASRLib.VbMod`
- ▶ adds code to the StartUp object:



If the Startup Object is a Form, the AddIn adds the following line of code to the Form\_Load event: `asr.Init Forms`

If the Startup Object is Sub Main, the AddIn adds the following line of code to the Main() method: `asr.Init Forms`

- For all Class modules in the project, the AddIn adds the following line of code to the Class\_Initialize event: `asr.Init Forms`
- For all UserControl modules in the project, the AddIn adds the following line of code to the UserControl\_Initialize event: `asr.Init Forms, UserControl`
- For all UserDocument modules in the project, the AddIn adds the following line of code to the UserControl\_Initialize event: `asr.Init Forms, UserDocument`

---

**Notes:** If the error message “DllRegisterServer in <windows directory>\system\wrvbasr.dll failed” appears during the WinRunner agent installation, copy the file oleaut32.dll (version 2.20.4054.1 or higher) to your system directory and re-install the WinRunner agent.

Do not run WinRunner and the Visual Basic IDE together.

Test your application only as a running executable.

---

# Adding WinRunner Components

Once you install WinRunner, you can run the setup program at any time to add program components, such as additional development environment or control support, samples, or online documentation.

To add components:

- 1 Insert the CD-ROM into the drive from which you want to add WinRunner components. If the CD drive is on your local machine, the WinRunner Setup window opens. If you are installing from a network drive, connect to it and run *autorun.exe* under the \setup subdirectory.
- 2 Click Install. The WinRunner setup program starts. The WinRunner Setup splash screen and the Setup progress bar open.
- 3 The software license agreement appears. To accept the terms of the license agreement, click Yes. If you click No, the setup program will close. To install additional WinRunner components, you must accept the license agreement.
- 4 In the User Information dialog box, type your name, the name of your company, and a WinRunner serial number. You can find this number on the outside of your WinRunner box. Click Next to proceed.
- 5 Click Yes to confirm the registration information.
- 6 Select your installation type: **Standalone Installation**, **Network Installation**, or **Network Installation** and add shortcuts to your Start menu. Click Next to proceed.
- 7 If relevant, select the additional support you want to add (Visual Basic, PowerBuilder, and/or ActiveX Controls). Click Next to proceed.
- 8 Choose **Custom Installation**. Click Next to proceed.
- 9 Select the components you want to install and specify the destination folder. In the Choose Destination Location window, click Next to confirm the location of your WinRunner files.

If you select a component that is already installed, you are prompted to overwrite it. To overwrite existing components of WinRunner, click the

Overwrite button. If you do not want to overwrite existing components of WinRunner, click Cancel. The previous window reopens and you can modify your selection.

- 10 The installation settings you selected are displayed in a read-only window. Review the settings. If you want to select different settings, click Back. If you are satisfied with the settings, click Next.

The installation process begins.

To pause or quit the installation process, click Cancel.

# Uninstalling WinRunner

Your WinRunner installation includes an uninstall program which uninstalls WinRunner software and files from your computer and removes WinRunner shortcuts from your Start menu.

To uninstall WinRunner:

- 1 Choose Programs > WinRunner > Uninstall WinRunner on your Start menu.  
The Uninstall Shield window opens.
- 2 You may be prompted to removed shared files that are not in use by any program. If you are not sure what to do, click No to All.  
The Uninstall Shield removes WinRunner from your computer.
- 3 When the Uninstall program is completed, the OK button is enabled. Click OK.





Mercury Interactive Corporation  
1325 Borregas Avenue  
Sunnyvale, CA 94089  
Tel. (408)822-5200 (800)Test-911  
Fax. (408)822-5300



WR1 05 . 8 05 A1 81