



# Asset Manager

Software Version: 9.61

Windows® and Linux® operating systems

# Physical Data Models

Document Release Date: September 2016

Software Release Date: September 2016



**Hewlett Packard**  
Enterprise

## Legal Notices

### Warranty

The only warranties for Hewlett Packard Enterprise products and services are set forth in the express warranty statements accompanying such products and services. Nothing herein should be construed as constituting an additional warranty. Hewlett Packard Enterprise shall not be liable for technical or editorial errors or omissions contained herein.

The information contained herein is subject to change without notice.

### Restricted Rights Legend

Confidential computer software. Valid license from Hewlett Packard Enterprise required for possession, use or copying. Consistent with FAR 12.211 and 12.212, Commercial Computer Software, Computer Software Documentation, and Technical Data for Commercial Items are licensed to the U.S. Government under vendor's standard commercial license.

### Copyright Notice

© 1994 - 2016 Hewlett Packard Enterprise Development LP

### Trademark Notices

Adobe™ is a trademark of Adobe Systems Incorporated.

Microsoft® and Windows® are U.S. registered trademarks of Microsoft Corporation.

UNIX® is a registered trademark of The Open Group.

This product includes an interface of the 'zlib' general purpose compression library, which is Copyright © 1995-2002 Jean-loup Gailly and Mark Adler.

## Documentation Updates

The title page of this document contains the following identifying information:

- Software Version number, which indicates the software version.
- Document Release Date, which changes each time the document is updated.
- Software Release Date, which indicates the release date of this version of the software.

To check for recent updates or to verify that you are using the most recent edition of a document, go to: <https://softwaresupport.hpe.com/>.

This site requires that you register for an HPE Passport and to sign in. To register for an HPE Passport ID, click **Register** on the HPE Software Support site or click **Create an Account** on the HPE Passport login page.

You will also receive updated or new editions if you subscribe to the appropriate product support service. Contact your HPE sales representative for details.

## Support

Visit the HPE Software Support site at: <https://softwaresupport.hpe.com>.

This website provides contact information and details about the products, services, and support that HPE Software offers.

HPE Software online support provides customer self-solve capabilities. It provides a fast and efficient way to access interactive technical support tools needed to manage your business. As a valued support customer, you can benefit by using the support website to:

- Search for knowledge documents of interest
- Submit and track support cases and enhancement requests
- Download software patches
- Manage support contracts
- Look up HPE support contacts
- Review information about available services
- Enter into discussions with other software customers
- Research and register for software training

Most of the support areas require that you register as an HPE Passport user and to sign in. Many also require a support contract. To register for an HPE Passport ID, click **Register** on the HPE Support site or click **Create an Account** on the HPE Passport login page.

To find more information about access levels, go to: <https://softwaresupport.hpe.com/web/softwaresupport/access-levels>.

**HPE Software Solutions Now** accesses the HPE Software Solution and Integration Portal website. This site enables you to explore HPE Product Solutions to meet your business needs, includes a full list of Integrations between HPE Products, as well as a listing of ITIL Processes. The URL for this website is <http://h20230.www2.hp.com/sc/solutions/index.jsp>.

# Contents

Chapter 1: Overview .....	5
Tables .....	6
Links .....	7
1-1 links .....	8
1-n and n-1 links .....	8
n-n links .....	8
Chapter 2: Portfolio .....	10
Models .....	11
Portfolio items .....	12
Assets .....	13
Assets linked to the procurement cycle .....	14
IT equipment .....	15
Cluster .....	16
Resource pool .....	16
Telephones .....	17
Ports and connections .....	17
Work Orders .....	18
Projects .....	19
Stocks .....	20
Software Installations .....	21
Cost Centers .....	22
Chapter 3: Procurement cycle .....	23
Procurement cycle .....	23
Purchase requests .....	24
Orders .....	25
Receptions .....	26
Invoices .....	27
Assets to be returned .....	28
Chapter 4: Contracts .....	29
Contracts .....	30

Chapter 5: Helpdesk .....	31
Helpdesk .....	32
Chapter 6: Financials .....	33
Budget and expenses .....	33
Chargebacks .....	34
Taxes .....	35
Chapter 7: Cable and Circuit .....	36
Cables and cable devices .....	37
Color codes .....	38
Label rules .....	39
Pair/conductor types .....	40
Cable duties .....	41
Slots .....	42
Topologies .....	43
Topology groups .....	44
Termination-field configurations .....	45
Cable links .....	46
Chapter 8: Administration .....	47
Access to the database .....	48
Workflows .....	49
Data health check .....	50
Chapter 9: Organization .....	51
Employees and Departments .....	52
Chapter 10: Catalog .....	53
Catalog .....	54
SAM .....	55
SAM .....	55
Send documentation feedback .....	56

# Chapter 1: Overview

This guide presents diagrams that correspond to the physical data models in Asset Manager.

Each of these diagrams contains one or more tables used by the modules in Asset Manager.

Tables .....	6
Links .....	7

# Tables

Each of the tables represented in this guide is identified by its SQL name.

Examples:

- The Portfolio items table uses the SQL name **amPortfolio**.
- The Assets table uses the SQL name **amAsset**.
- The Locations table uses the SQL name **amLocation**.
- The Employees and departments table uses the SQL name **amEmpIDept**.

The most important tables in each diagram are shown as the largest.

Examples:

- The Assets table (**amAsset**) in the "[Assets](#)" diagram on page [13](#).
- The Cables table (**amCable**) in the "[Cables and cable devices](#)" diagram on page [37](#).
- The Taxes table (**amTax**) in the "[Taxes](#)" diagram on page [35](#).

# Links

There are three types of links between tables:

- 1-1 links
- 1-n and n-1 links
- n-n links


Each of the links represented in this guide is identified by its SQL name.

Examples:

- The link going from the Portfolio items table (**amPortfolio**) to the Employees and departments table (**amEmpIDept**) has the SQL name **User**.
- The link going from the Employees and departments table (**amEmpIDept**) to the Portfolio items table (**amPortfolio**) has the SQL name **ItemsUsed**.

**Note:** The SQL name of a link assumes that one of the linked tables is the source table and the other is the destination table. Thus, the **User** link between the source table (**amPortfolio**) indicates that the link points to the user record of the destination table (**amEmpIDept**). Its reverse link, though, is named **ItemsUsed**. This link points to the records of the assets used by a given user. In this case, the source table is that of Employees and departments and the destination table is that of portfolio items.

In an effort not to overload our diagrams, reverse links are not represented. The choice of a link and its reverse link is arbitrary. If you want to find out what the SQL name of a reverse link is:

1. Launch Asset Manager Application Designer.
2. Open your database description.
3. Select the table of your choice.
4. Click .
5. Select a link.
6. The SQL name of its reverse link is indicated in the **Reverse link** field.

## 1-1 links

This kind of link means that:

- One record in the source table is linked to one record in the destination table.

**Example:** The **Asset** link between the Computers table (**amComputer**) and the Assets table (**amAsset**) in the "IT equipment" diagram on page 15. This link indicates that only one computer record can be linked to only one asset record.

## 1-n and n-1 links

A 1-n link means that:

- One record from the source table can be linked to several records in the destination table.
- Several records in the destination table can be linked to one record in the source table.

Example: The **Rents** link between the Contracts table (**amContracts**) and the Contract rents (**amCntrRent**) table in the "Contracts" diagram on page 30. This link indicates that one contract record can be linked to several contract rent records.

A n-1 link means that:

- Several records in the source table can be linked to one record in the destination table.
- One record in the destination table can be linked to several records in the source table.

Example: The **Model** link between the Assets table (**amAsset**) and the Models table (**amModel**) in the "Models" diagram on page 11. This link indicates that several asset records can correspond to the same model record.

## n-n links

This type of link means that:

- Several records in the source table can be linked to several records in the destination table.



Example: The **FuncRights** link between the User profiles table (**amProfile**) and the Functional rights table (**amFuncRight**) in the [Access to the database](#) diagram on page 48. This link indicates that an asset record can be linked to several functional right records and that a functional right record can be linked to several user profile records.

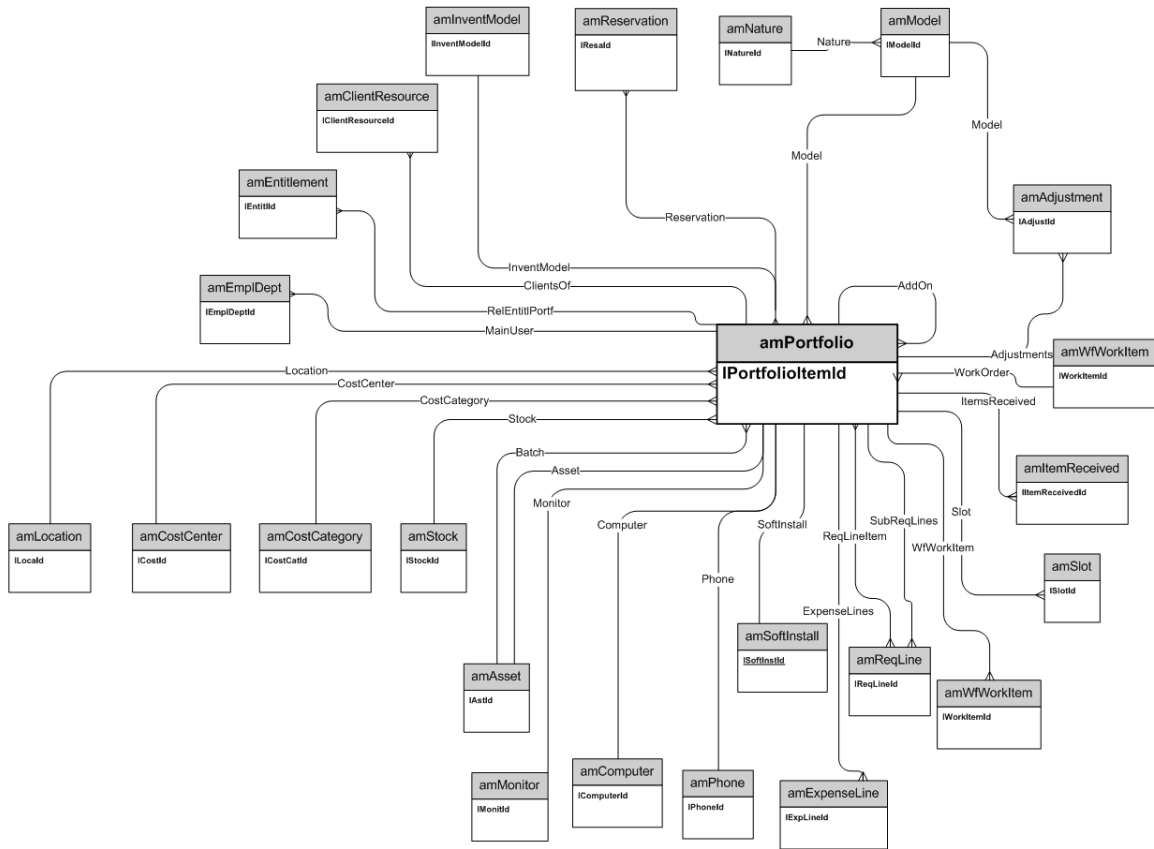
# Chapter 2: Portfolio

This chapter presents diagrams of the following physical data models:

Models .....	11
Portfolio items .....	12
Assets .....	13
Assets linked to the procurement cycle .....	14
IT equipment .....	15
Cluster .....	16
Resource pool .....	16
Telephones .....	17
Ports and connections .....	17
Work Orders .....	18
Projects .....	19
Stocks .....	20
Software Installations .....	21
Cost Centers .....	22

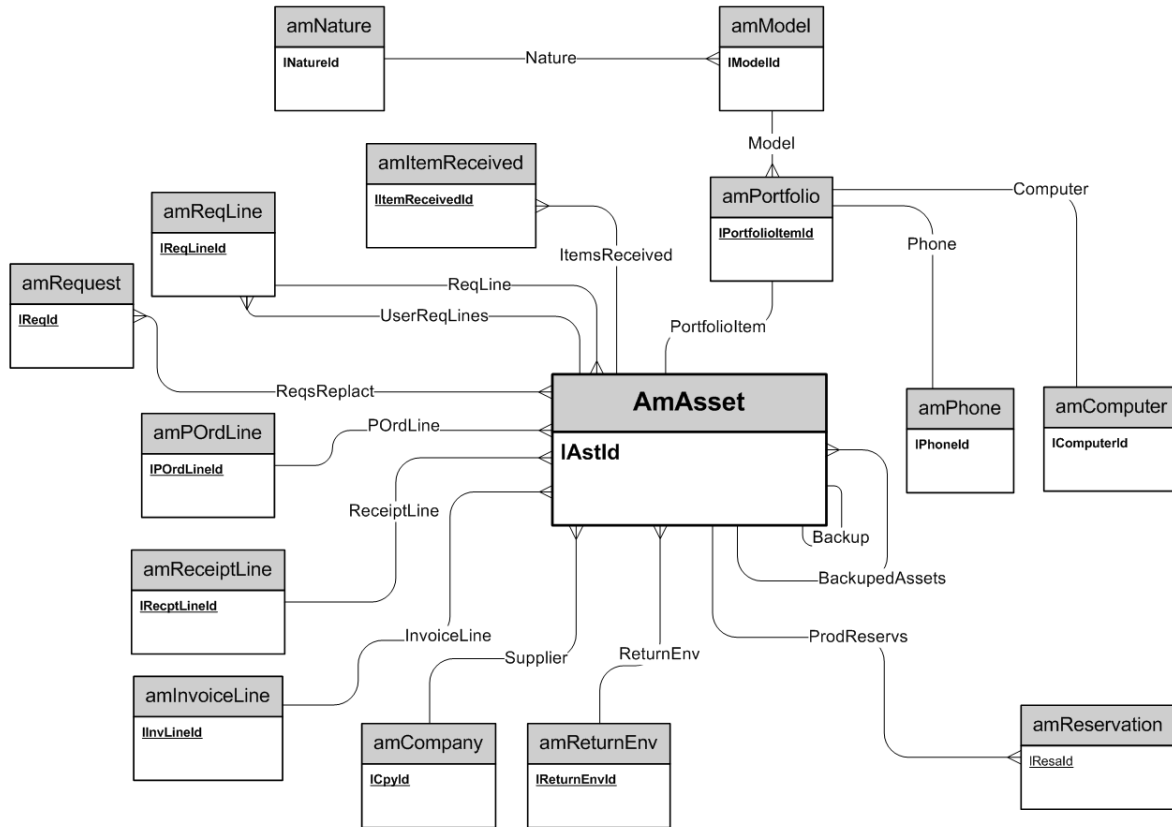


# Portfolio items

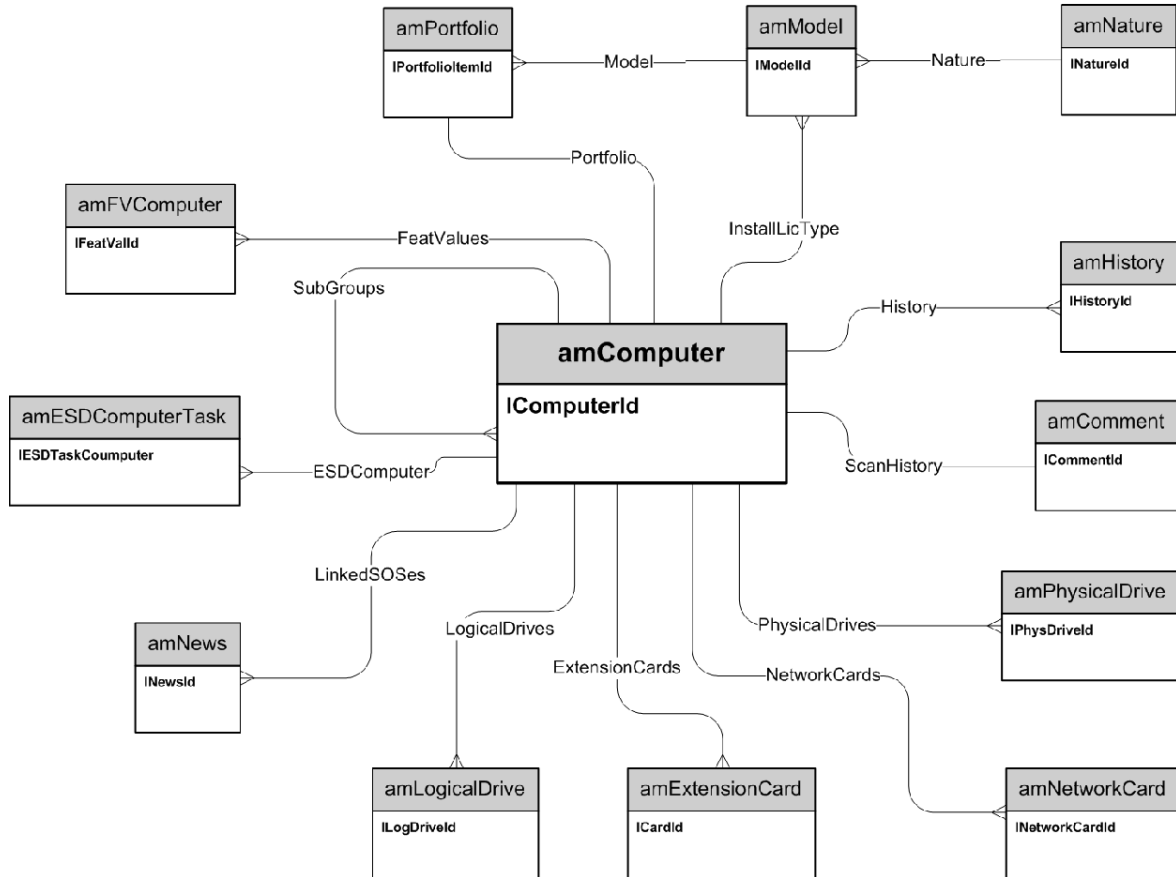




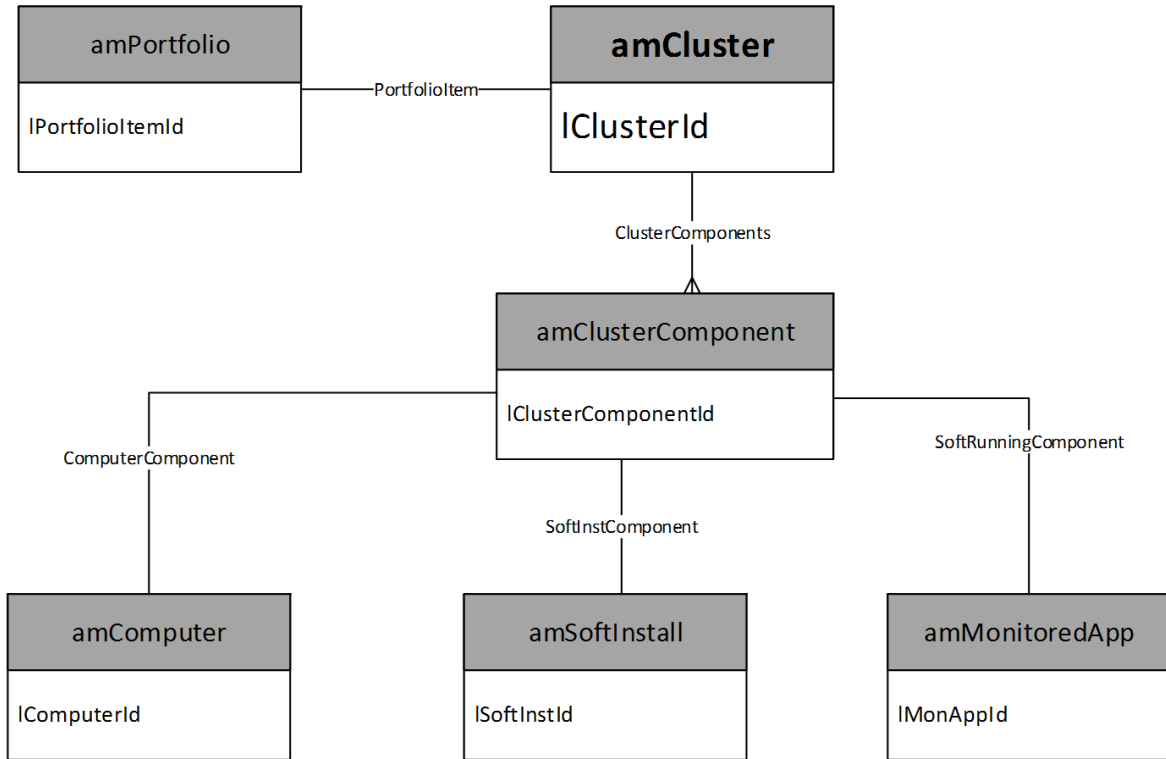
# Assets linked to the procurement cycle



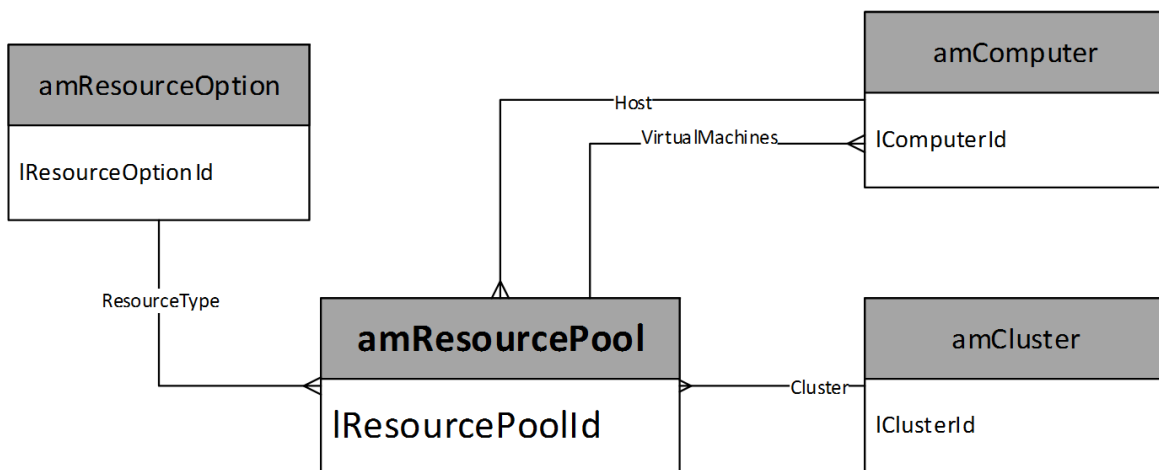
# IT equipment



# Cluster

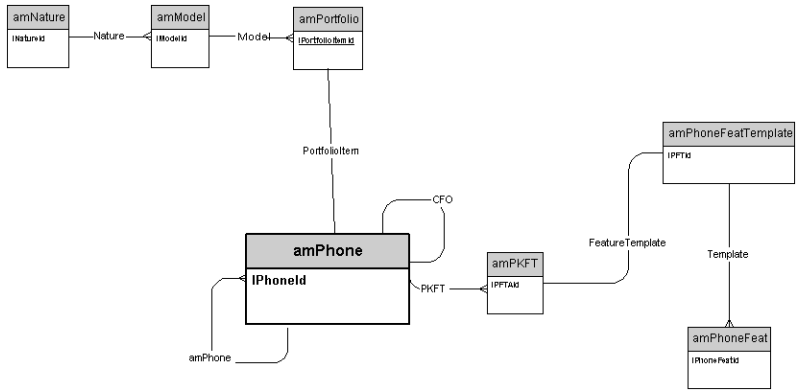


# Resource pool

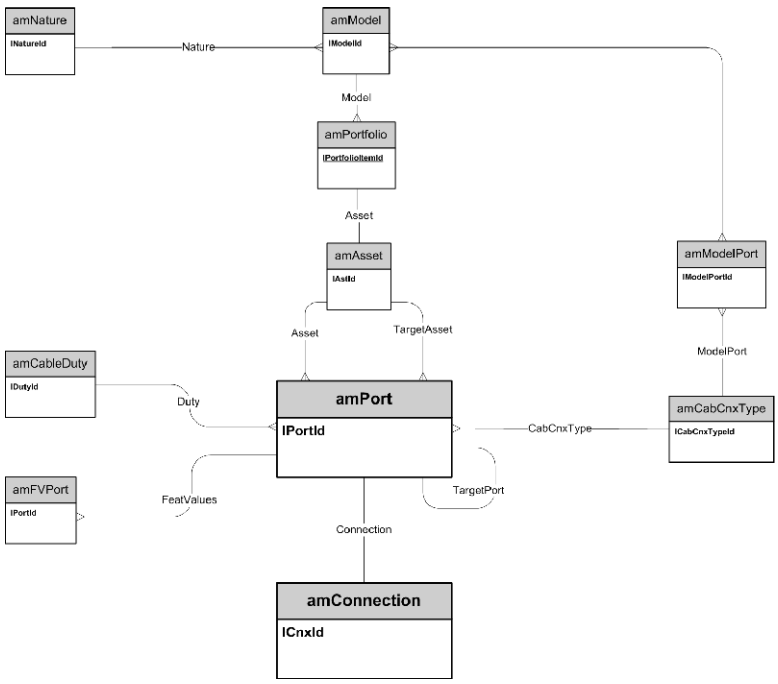




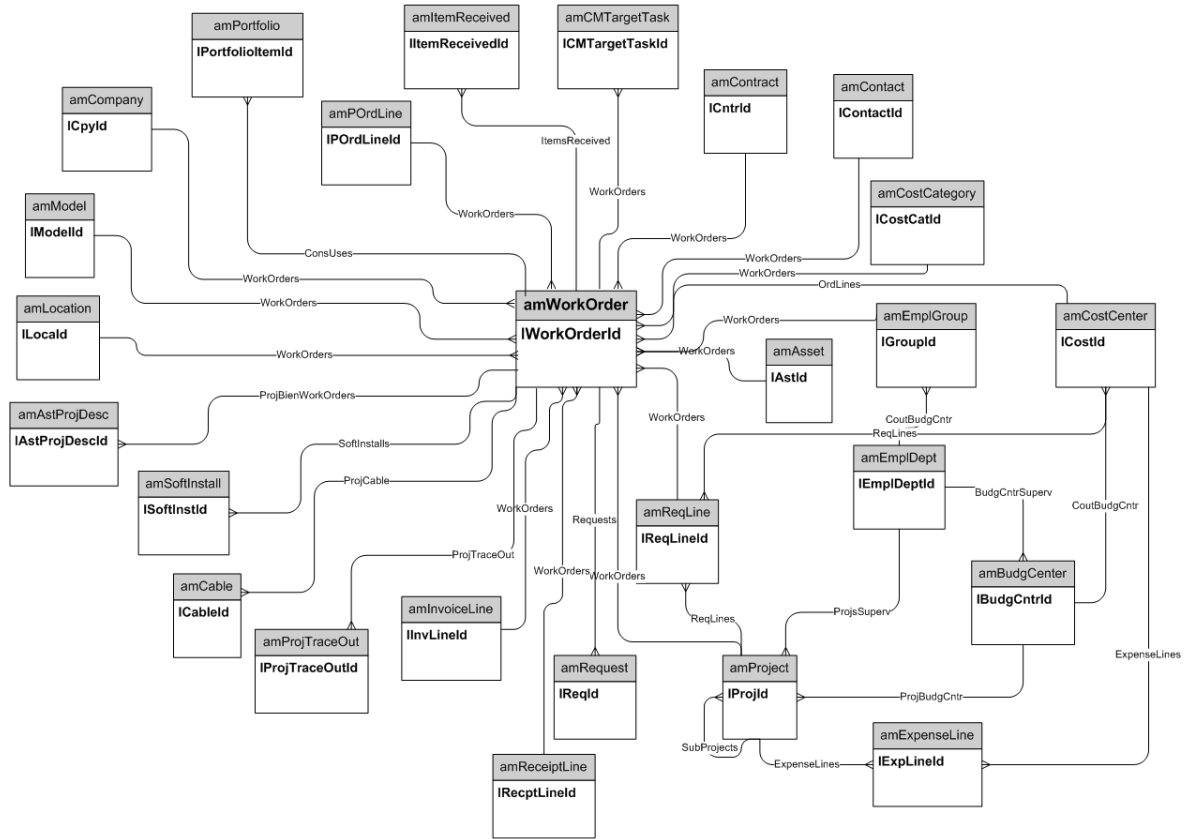
# Telephones



# Ports and connections

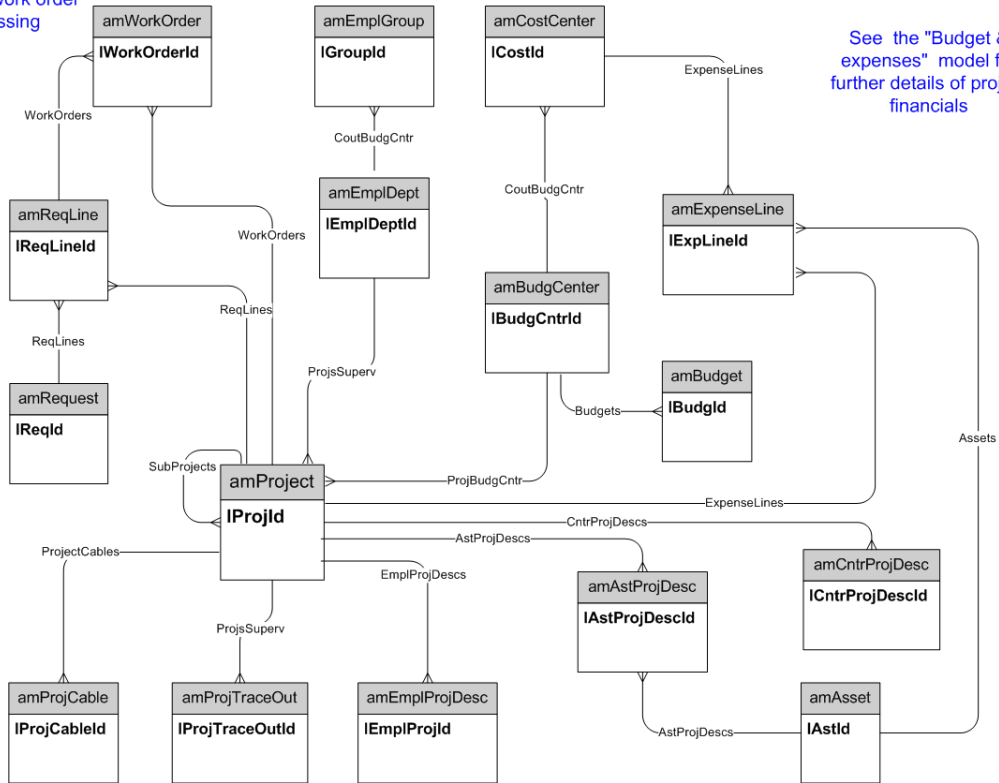


# Work Orders



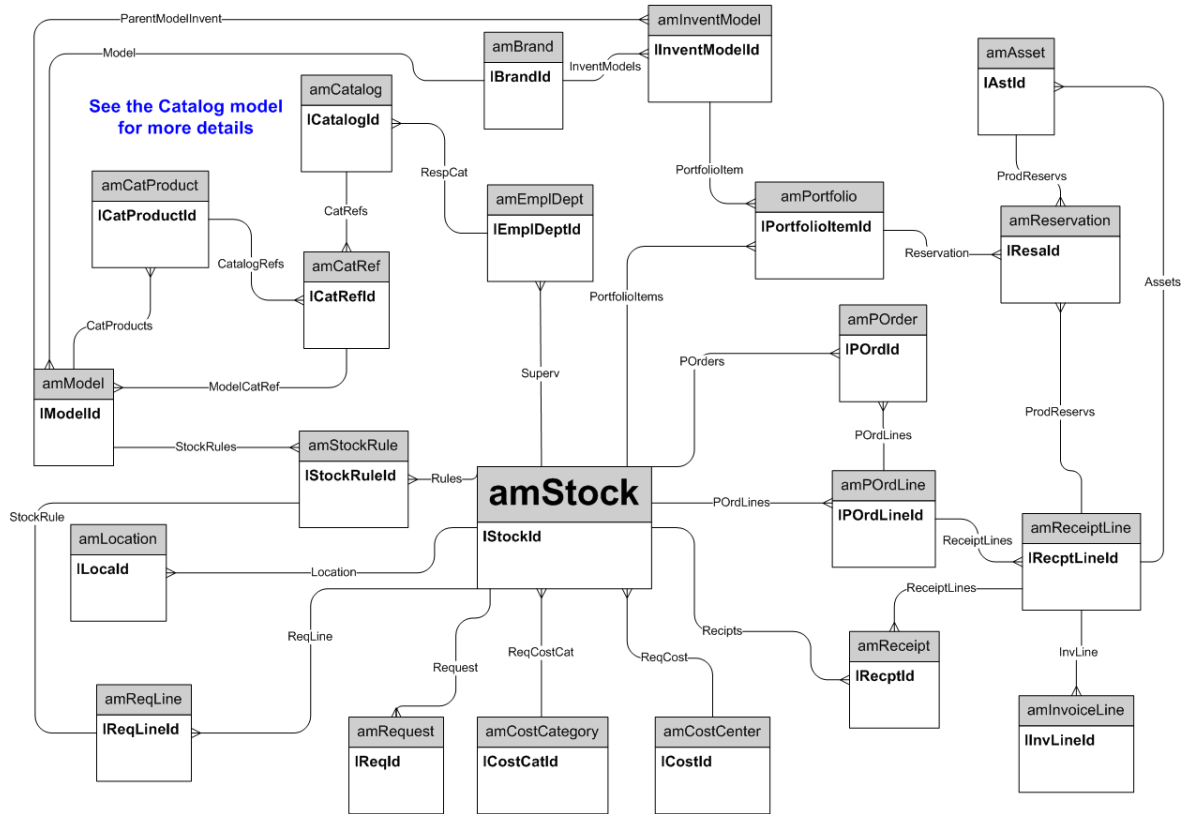
# Projects

See the "Work Orders" model for further details of work order processing

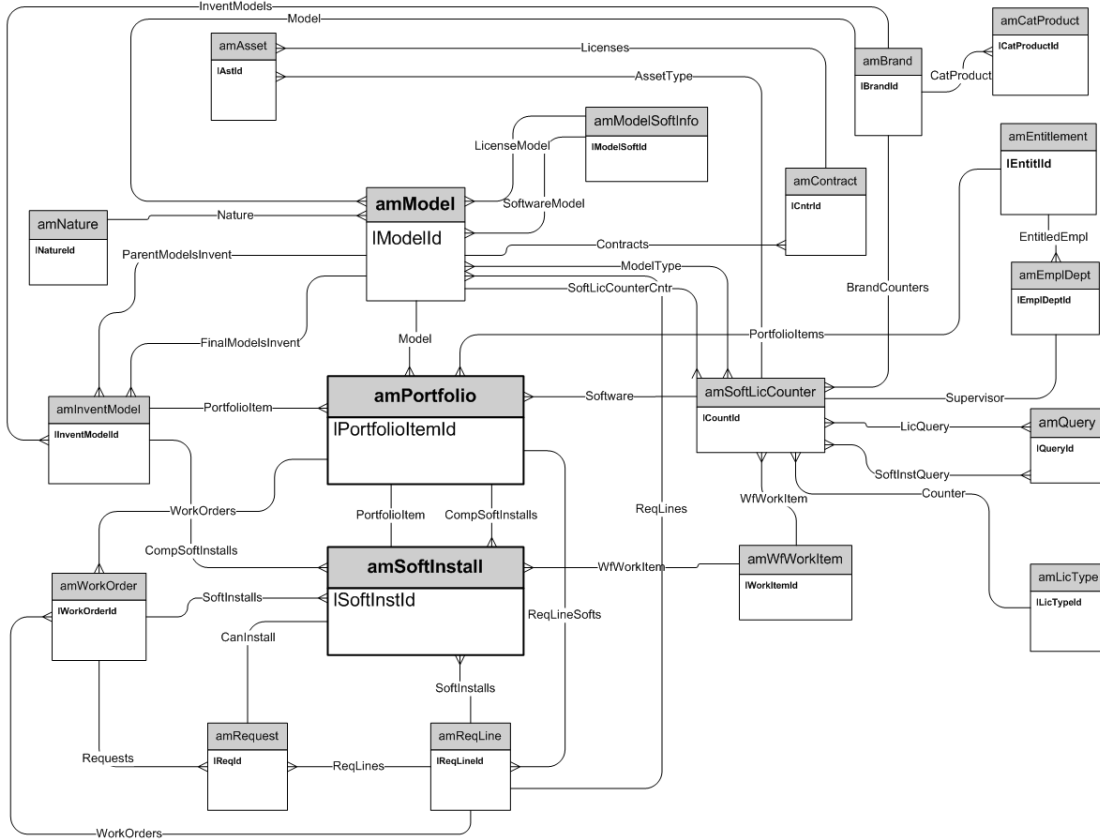


See the "Budget & expenses" model for further details of project financials

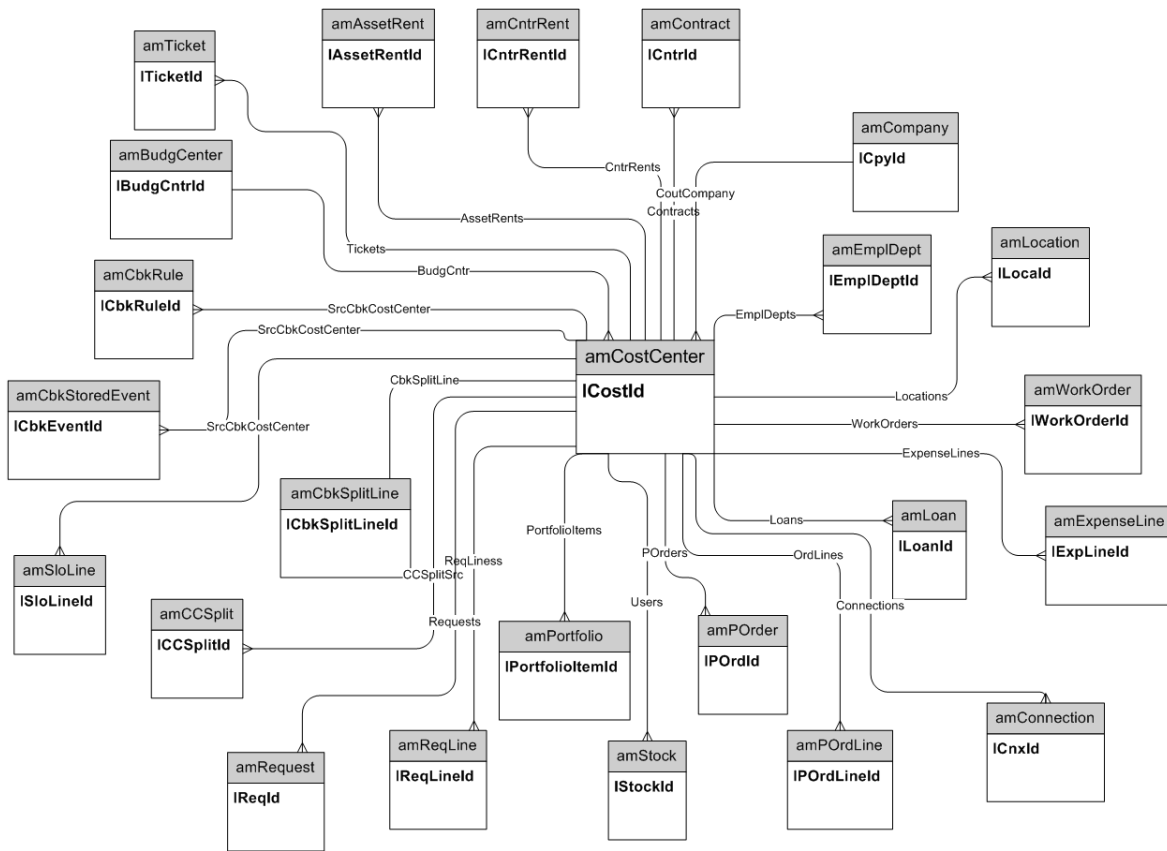
# Stocks



# Software Installations



# Cost Centers

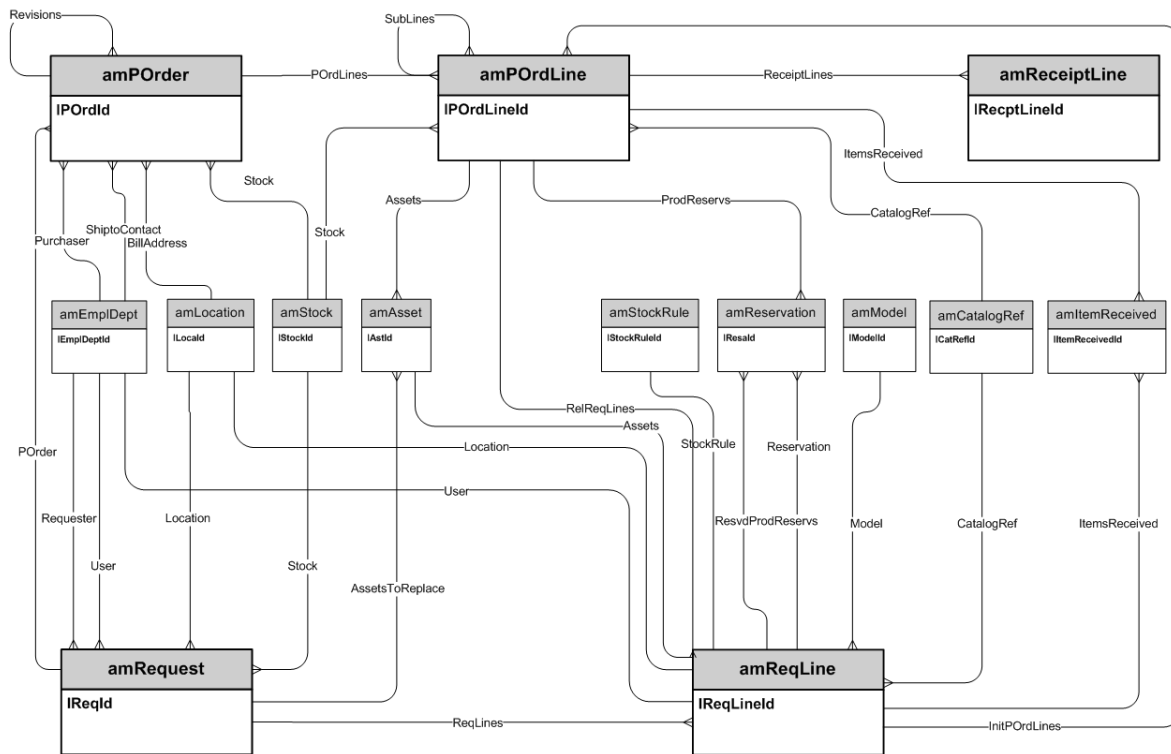


# Chapter 3: Procurement cycle

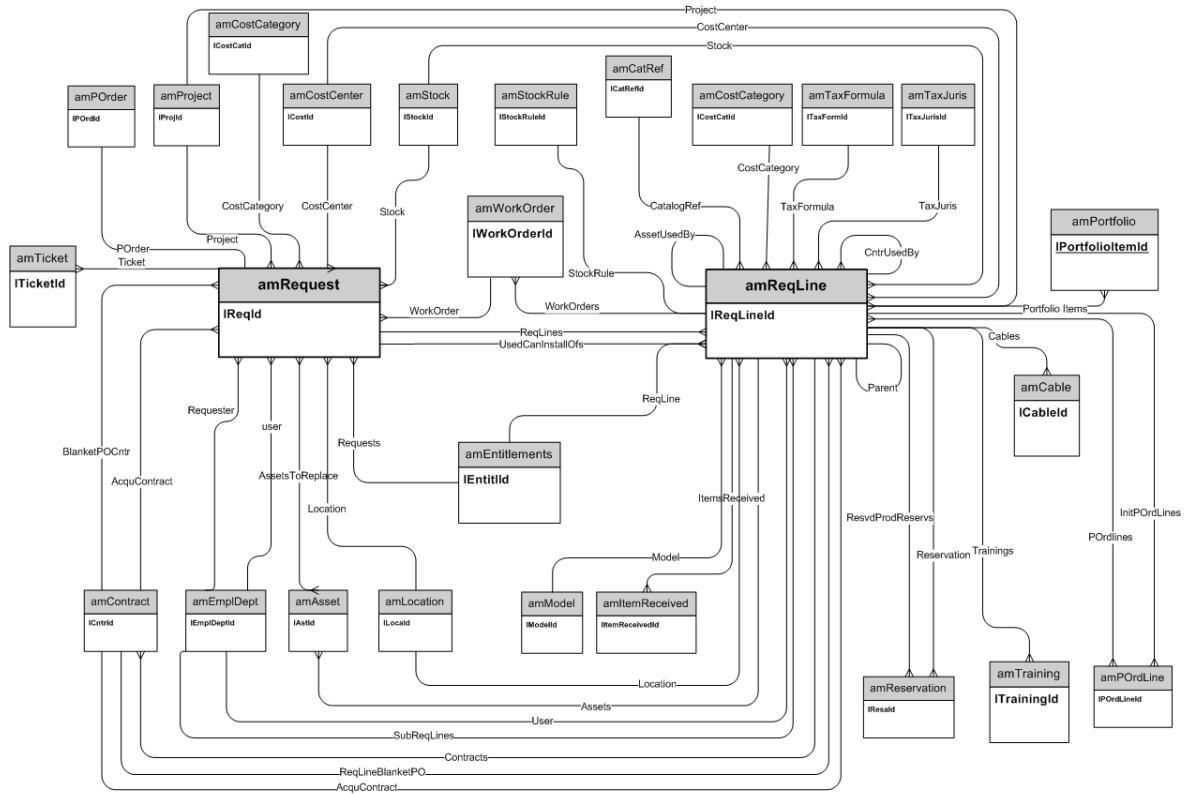
This chapter presents diagrams of the following physical data models:

- Procurement cycle ..... 23
- Purchase requests ..... 24
- Orders ..... 25
- Receptions ..... 26
- Invoices ..... 27
- Assets to be returned ..... 28

## Procurement cycle

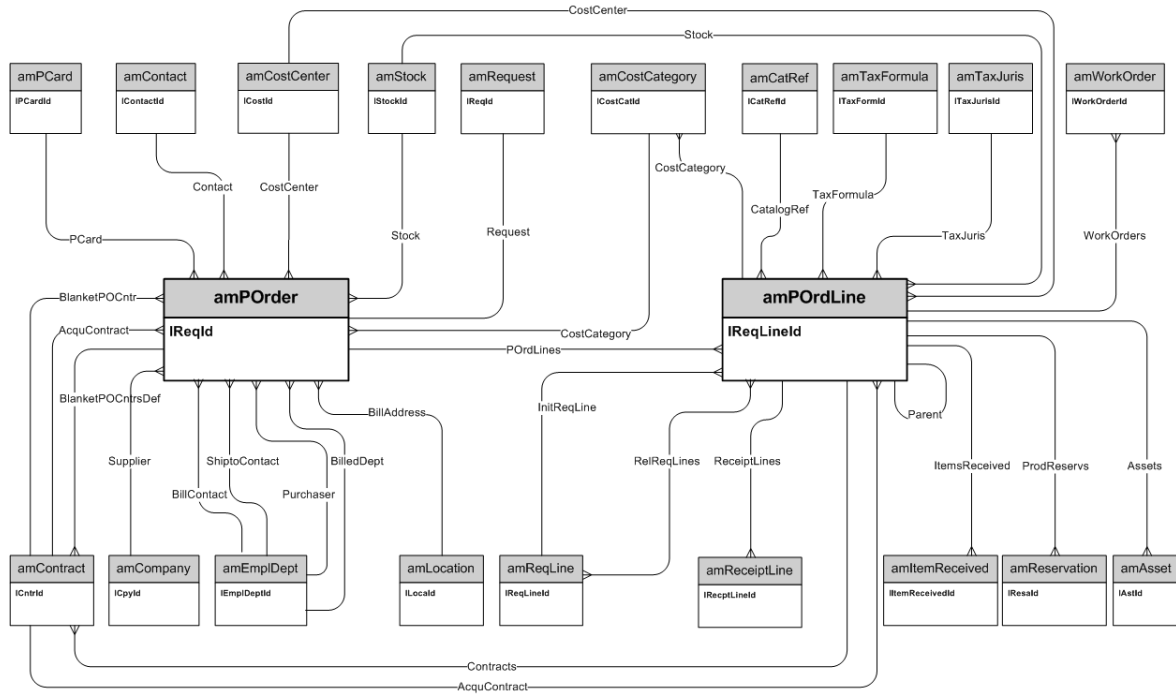


# Purchase requests

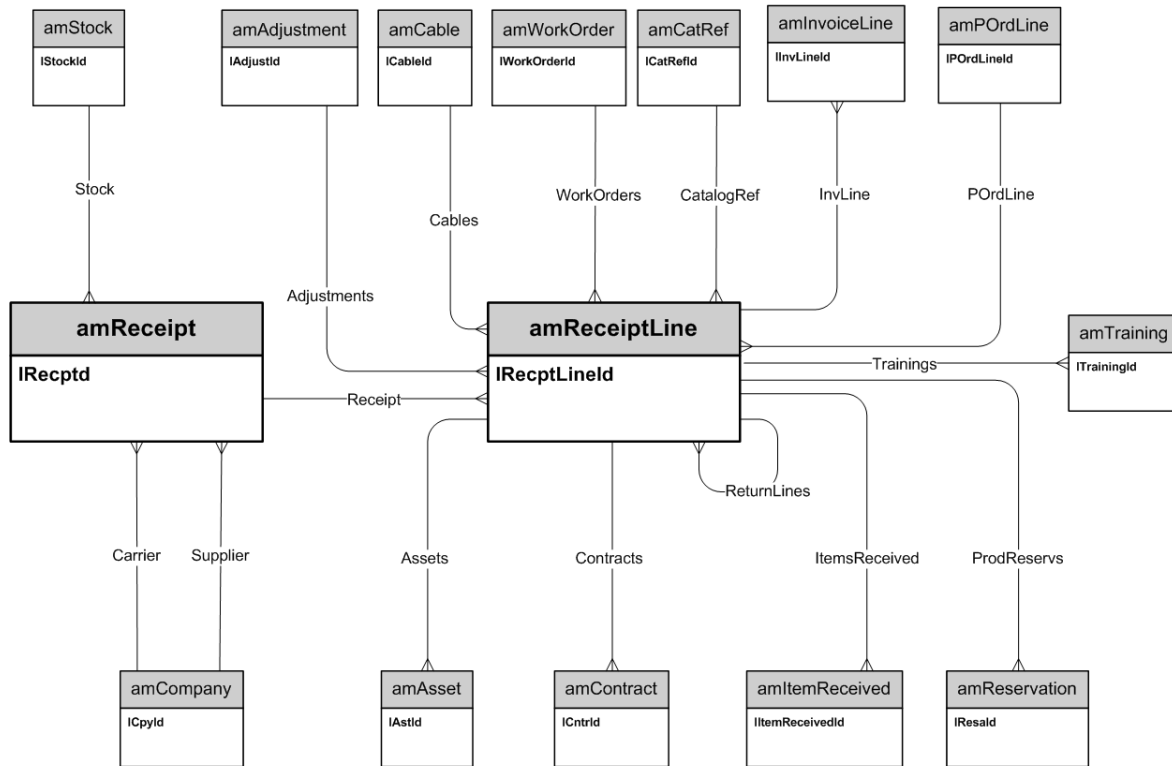




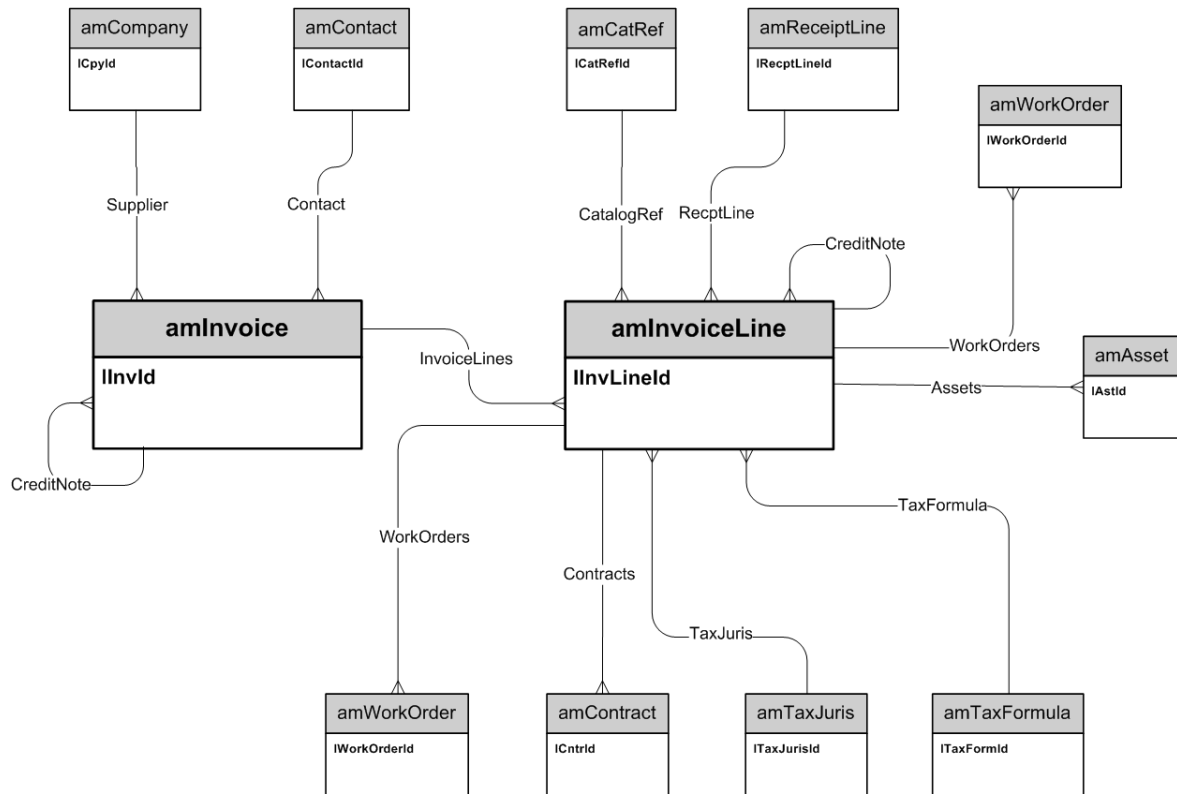
# Orders



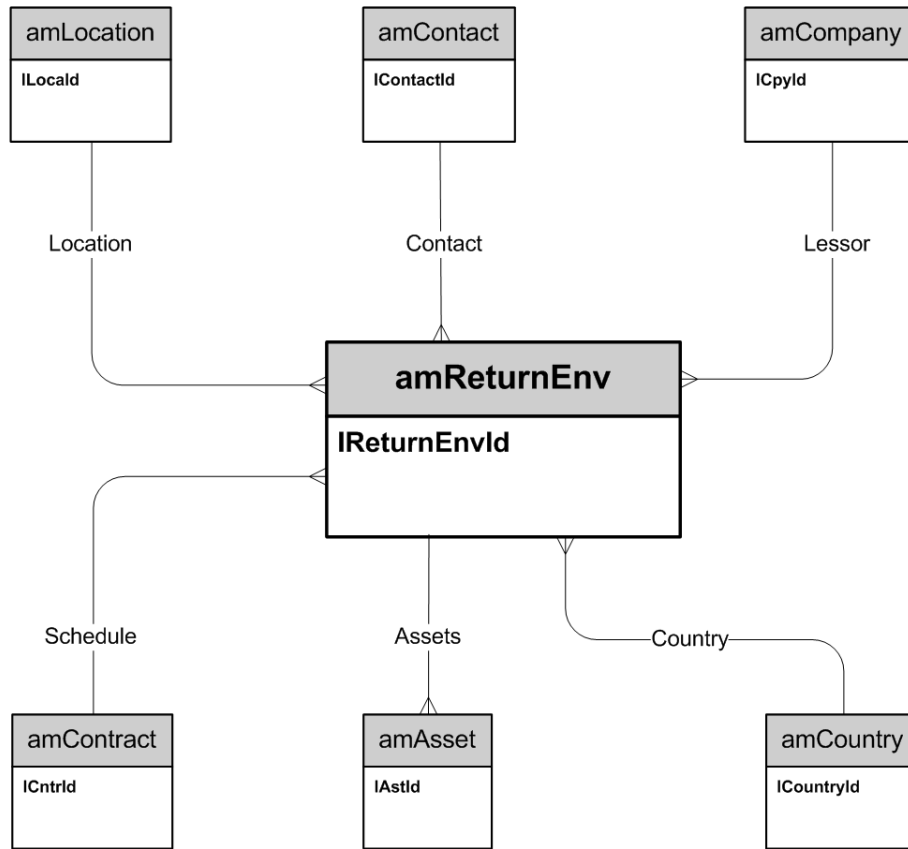
# Receptions



# Invoices



## Assets to be returned

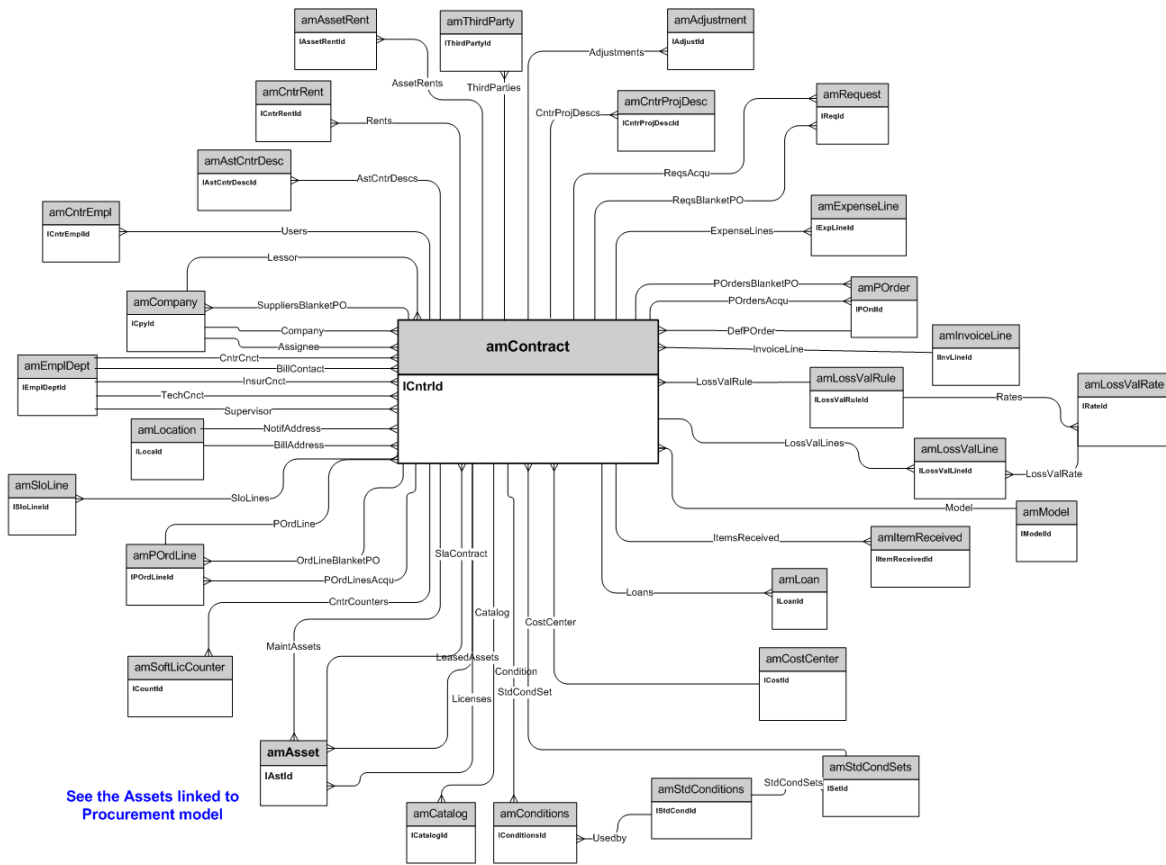


# Chapter 4: Contracts

This chapter presents the diagram of the following physical data model:

Contracts .....	30
-----------------	----

# Contracts

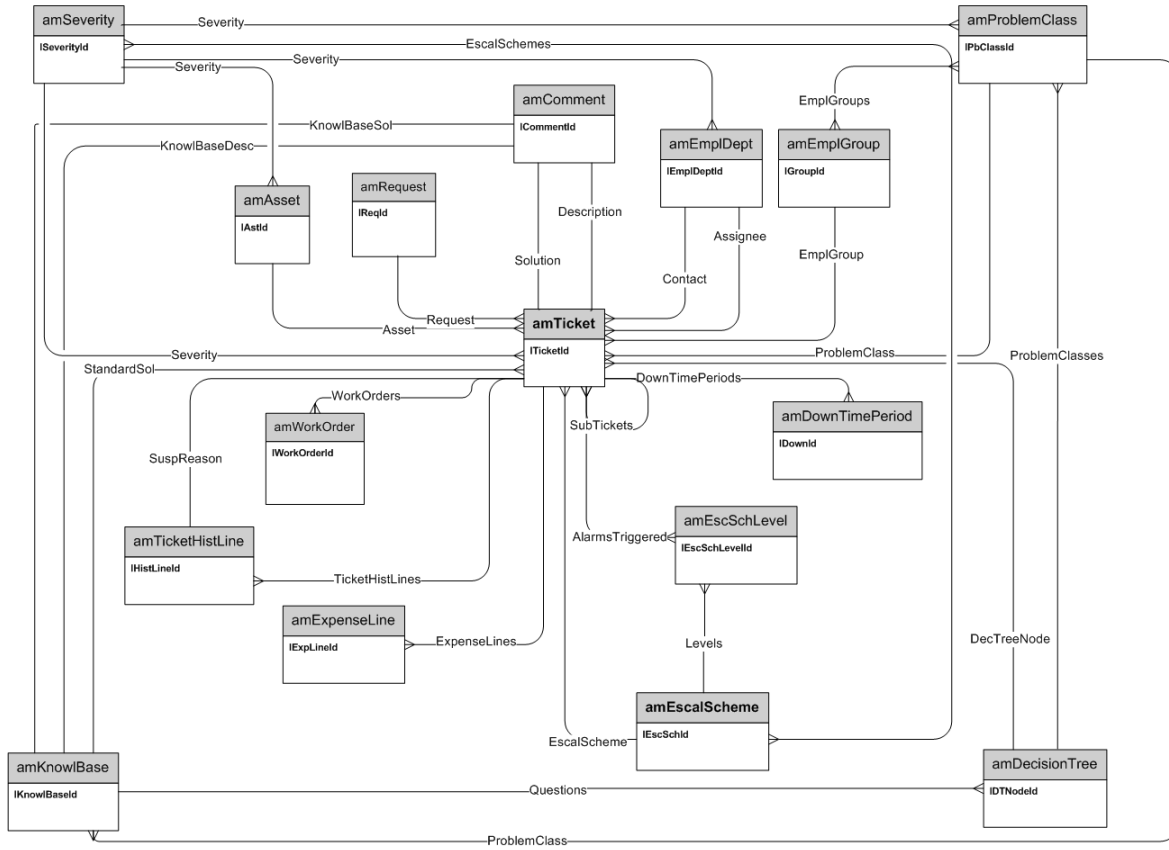


# Chapter 5: Helpdesk

This chapter presents the diagram of the following physical data model:

Helpdesk .....	32
----------------	----

# Helpdesk



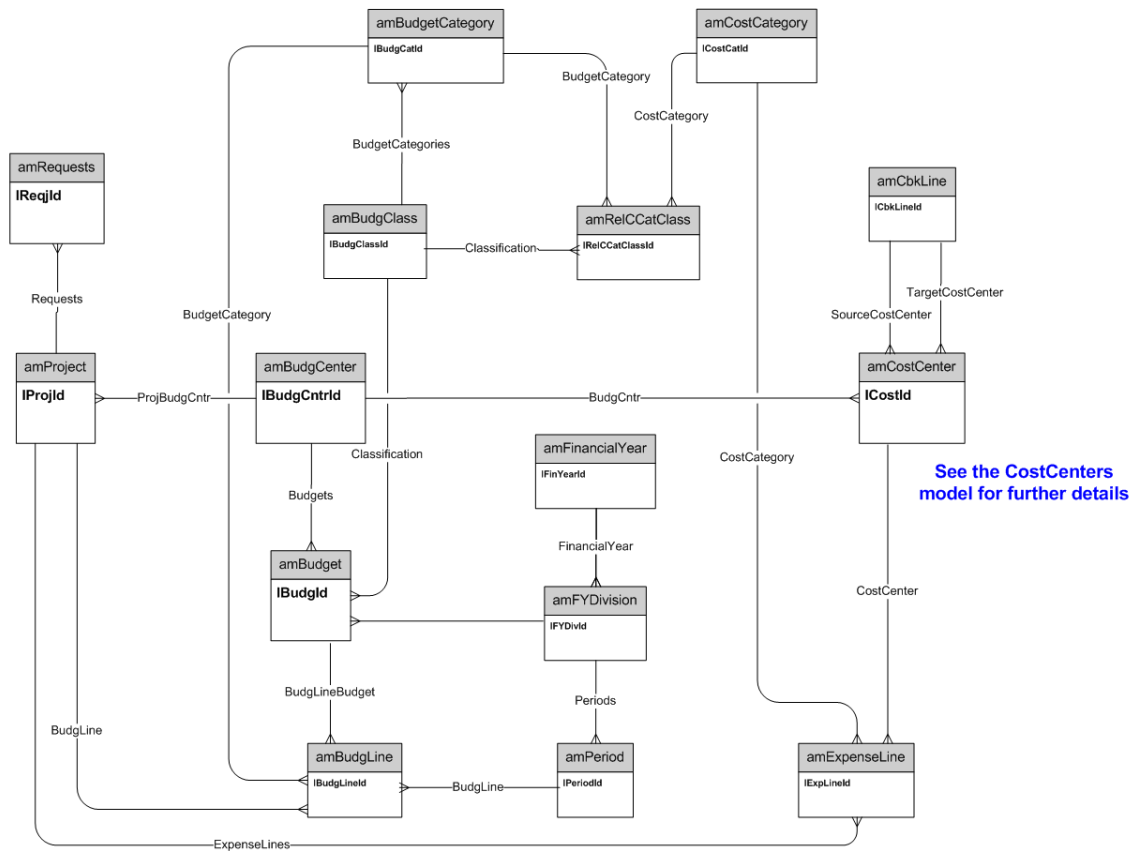


# Chapter 6: Financials

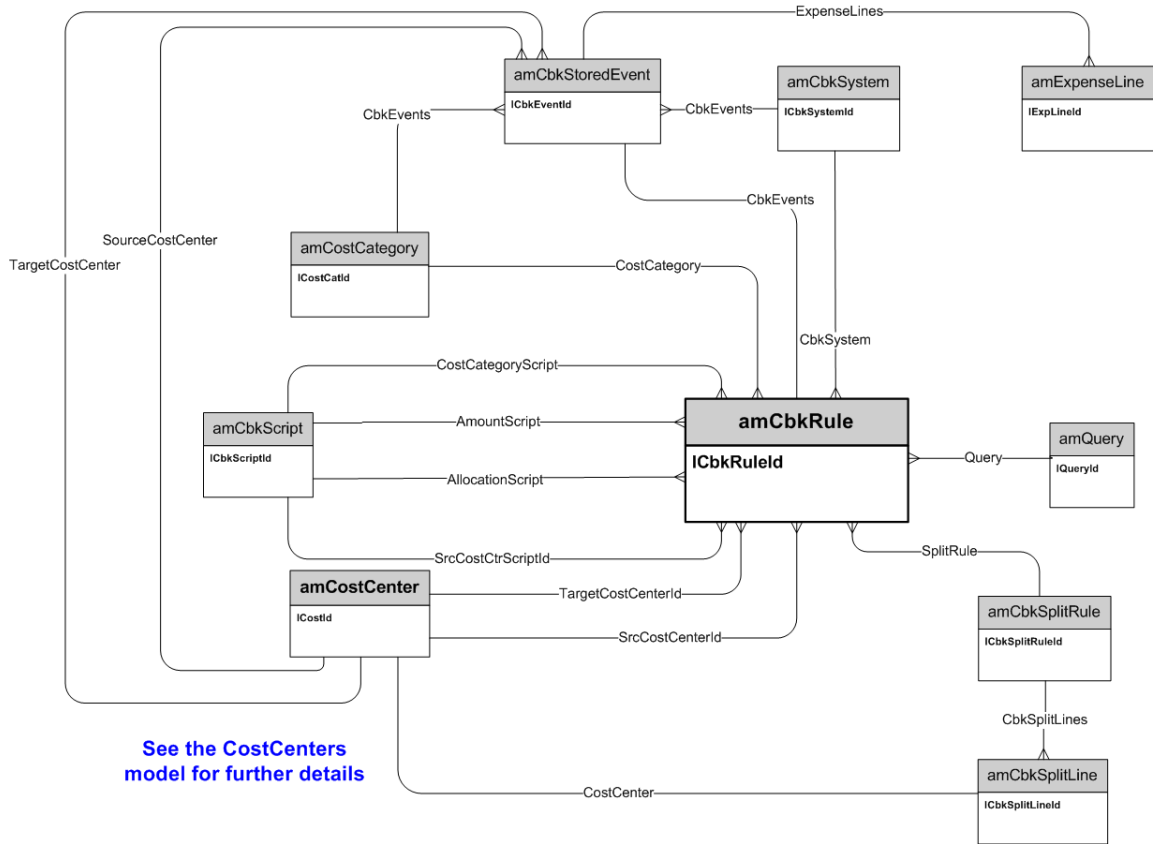
This chapter presents diagrams of the following physical data models:

Budget and expenses .....	33
Chargebacks .....	34
Taxes .....	35

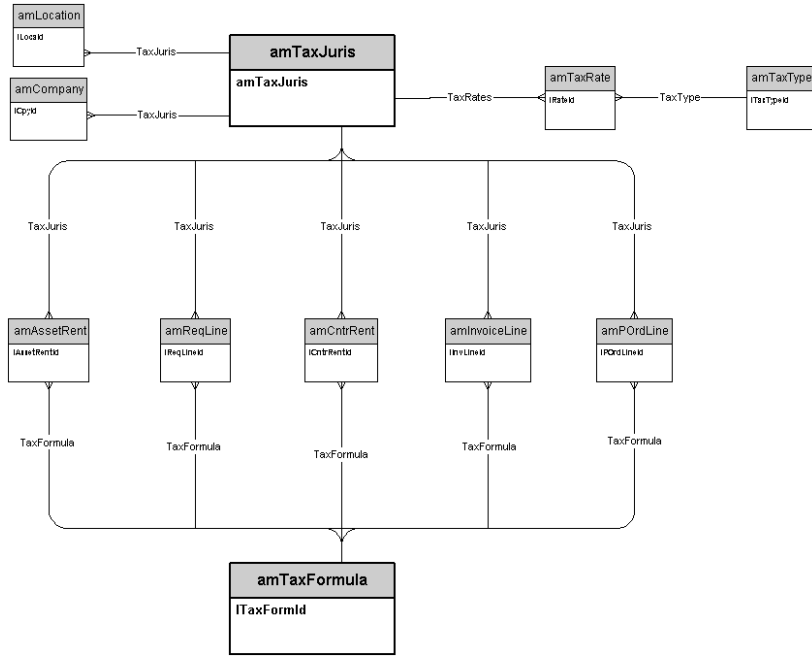
## Budget and expenses



# Chargebacks



# Taxes

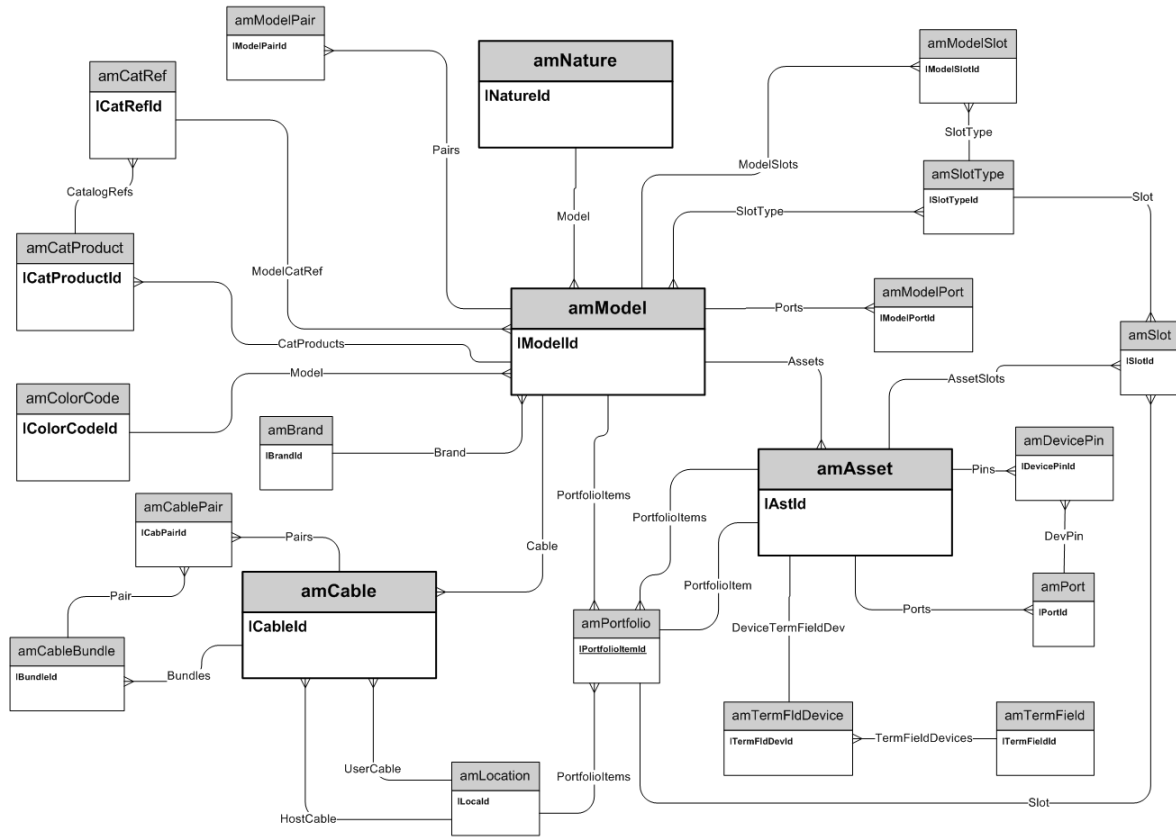


# Chapter 7: Cable and Circuit

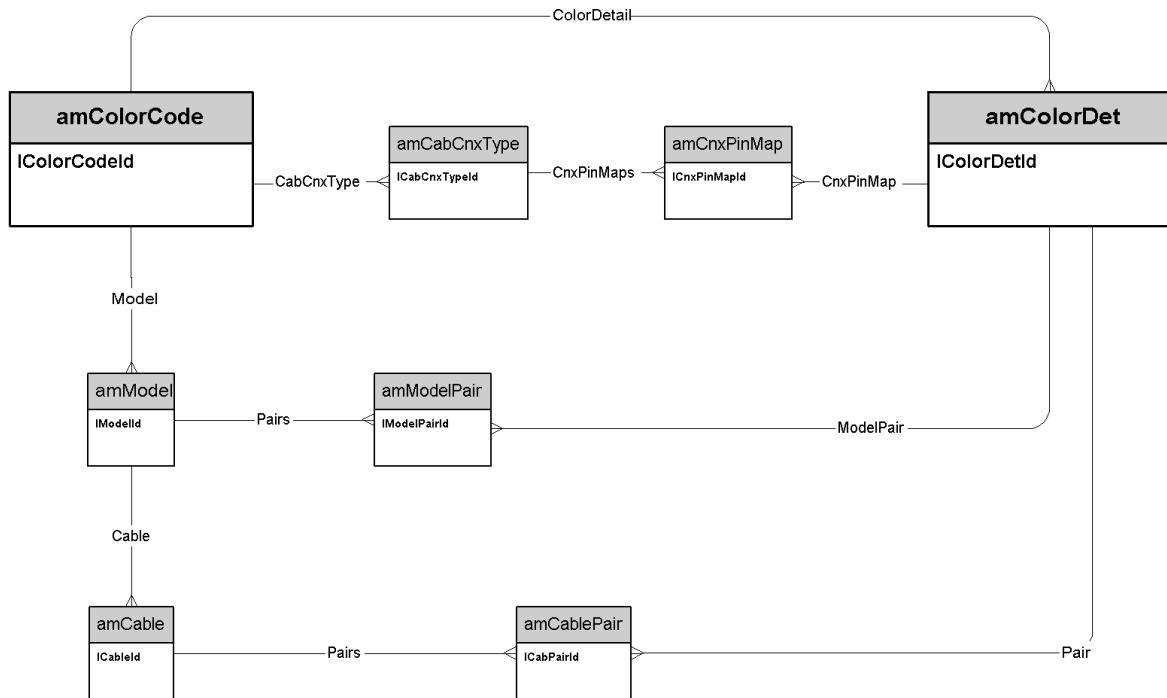
This chapter presents diagrams of the following physical data models:

Cables and cable devices .....	37
Color codes .....	38
Label rules .....	39
Pair/conductor types .....	40
Cable duties .....	41
Slots .....	42
Topologies .....	43
Topology groups .....	44
Termination-field configurations .....	45
Cable links .....	46

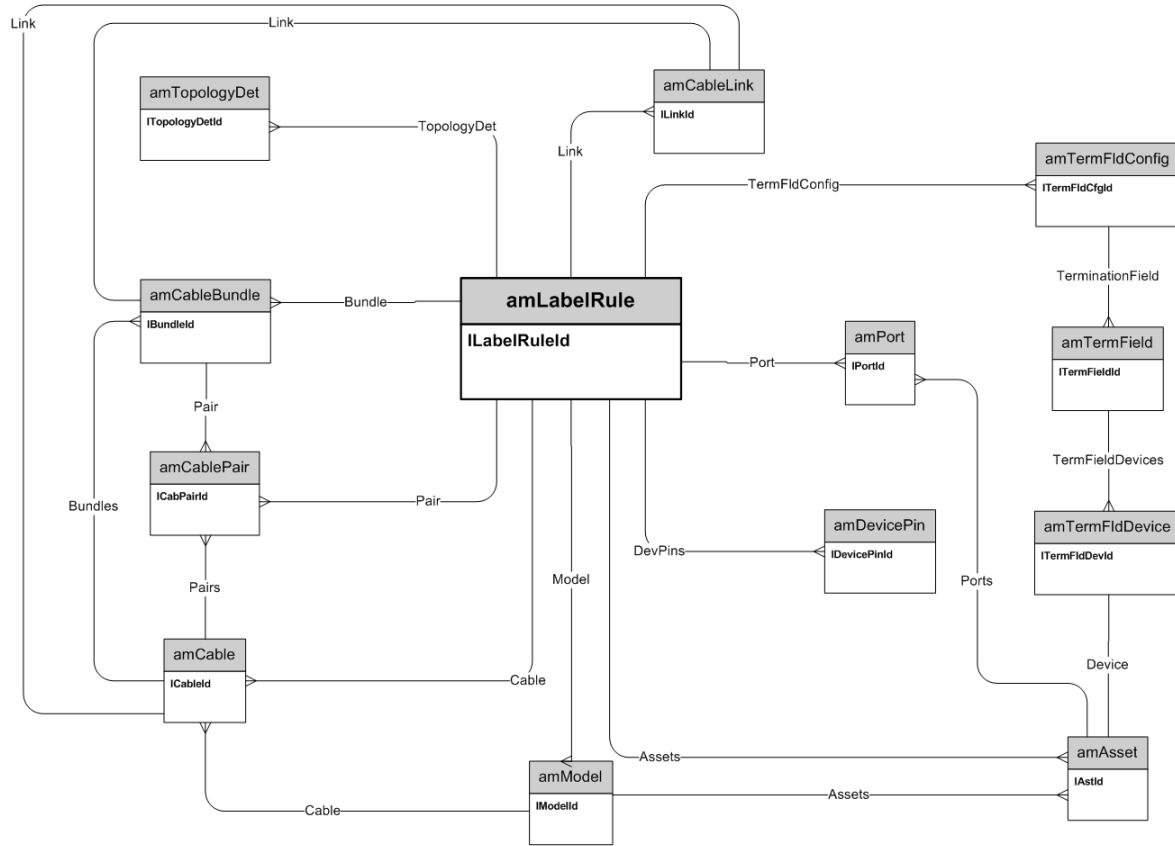
# Cables and cable devices



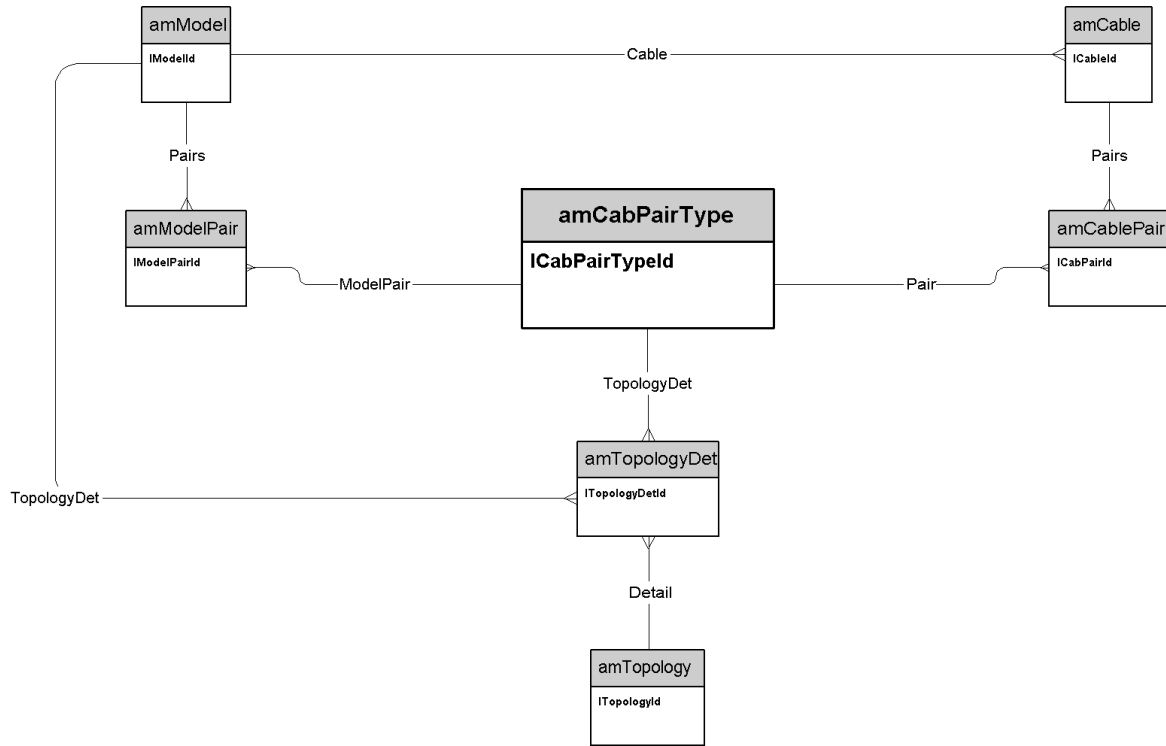
## Color codes



# Label rules

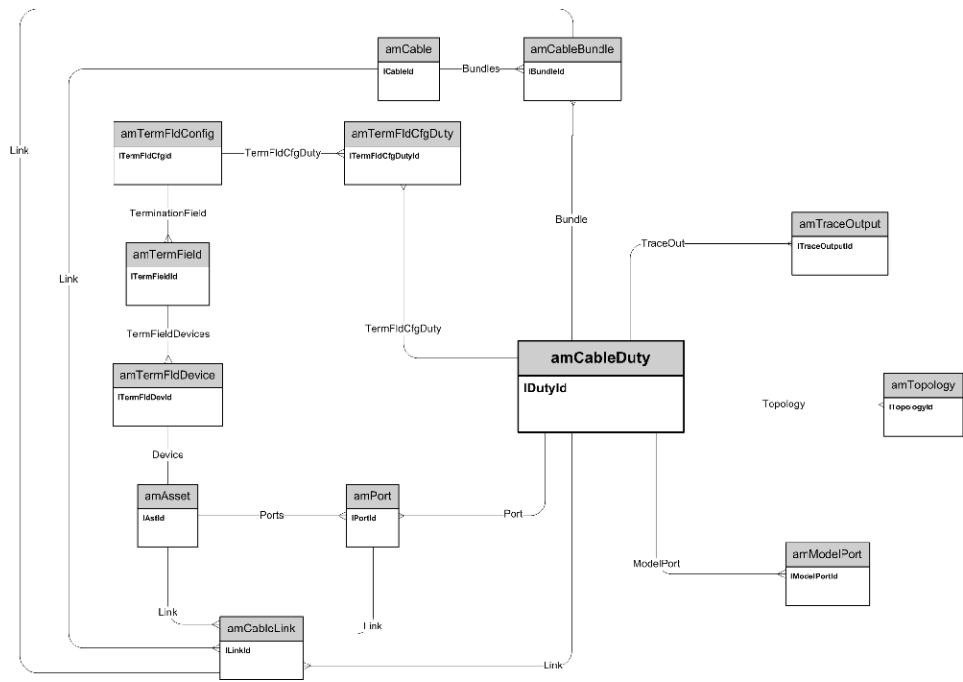


## Pair/conductor types

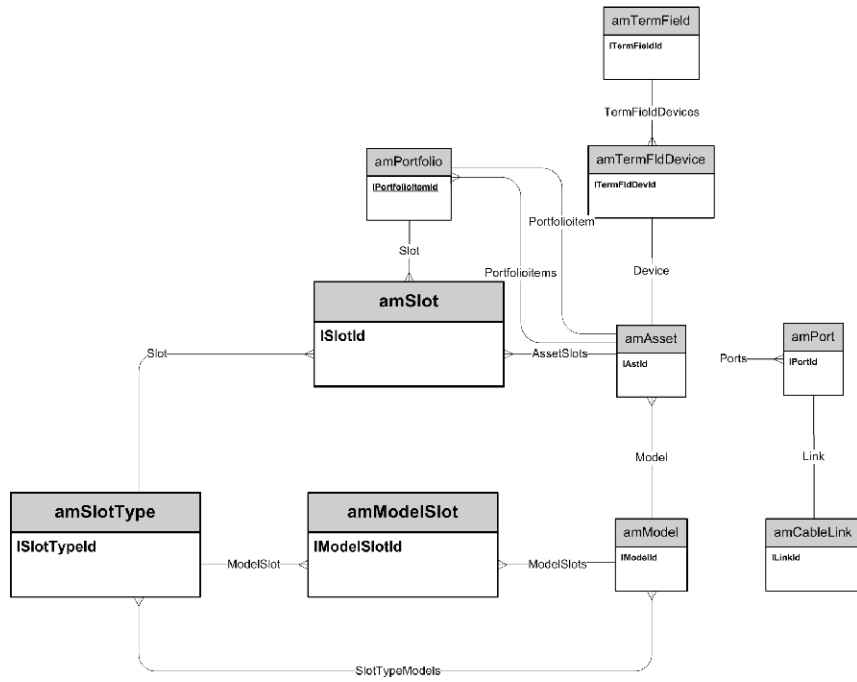




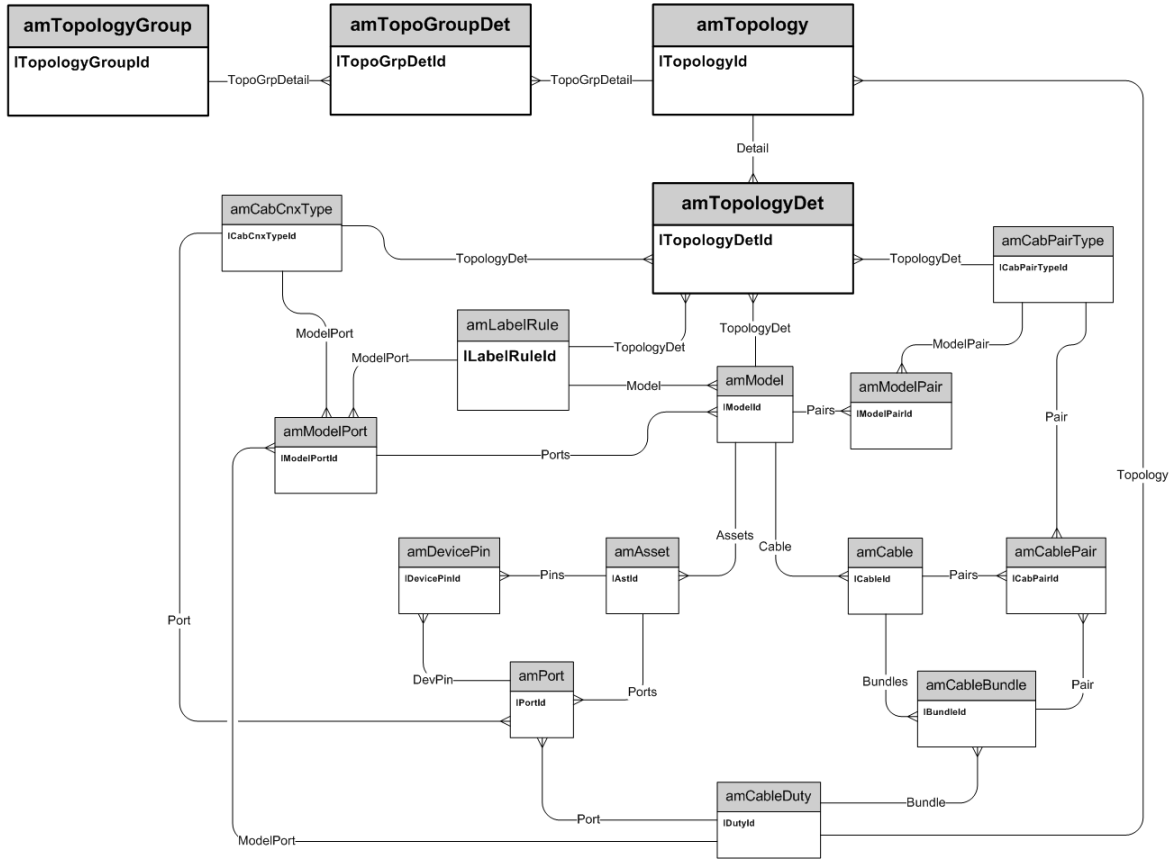
# Cable duties



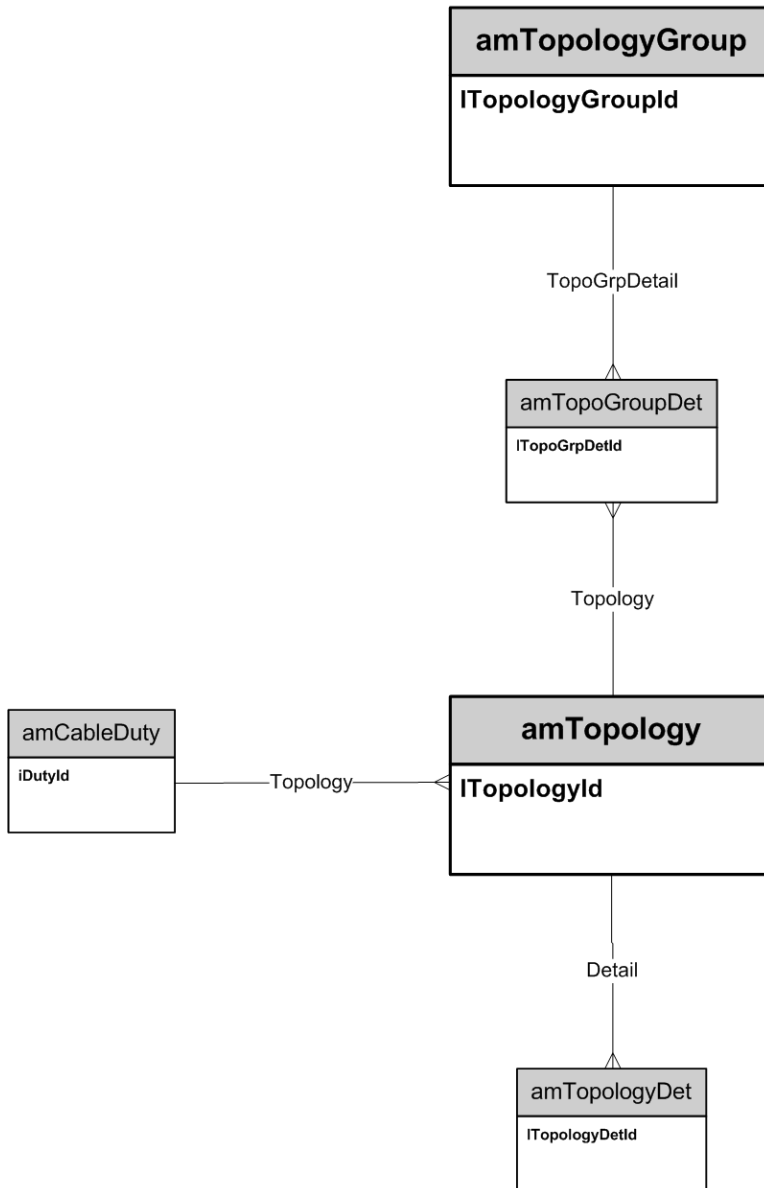
# Slots



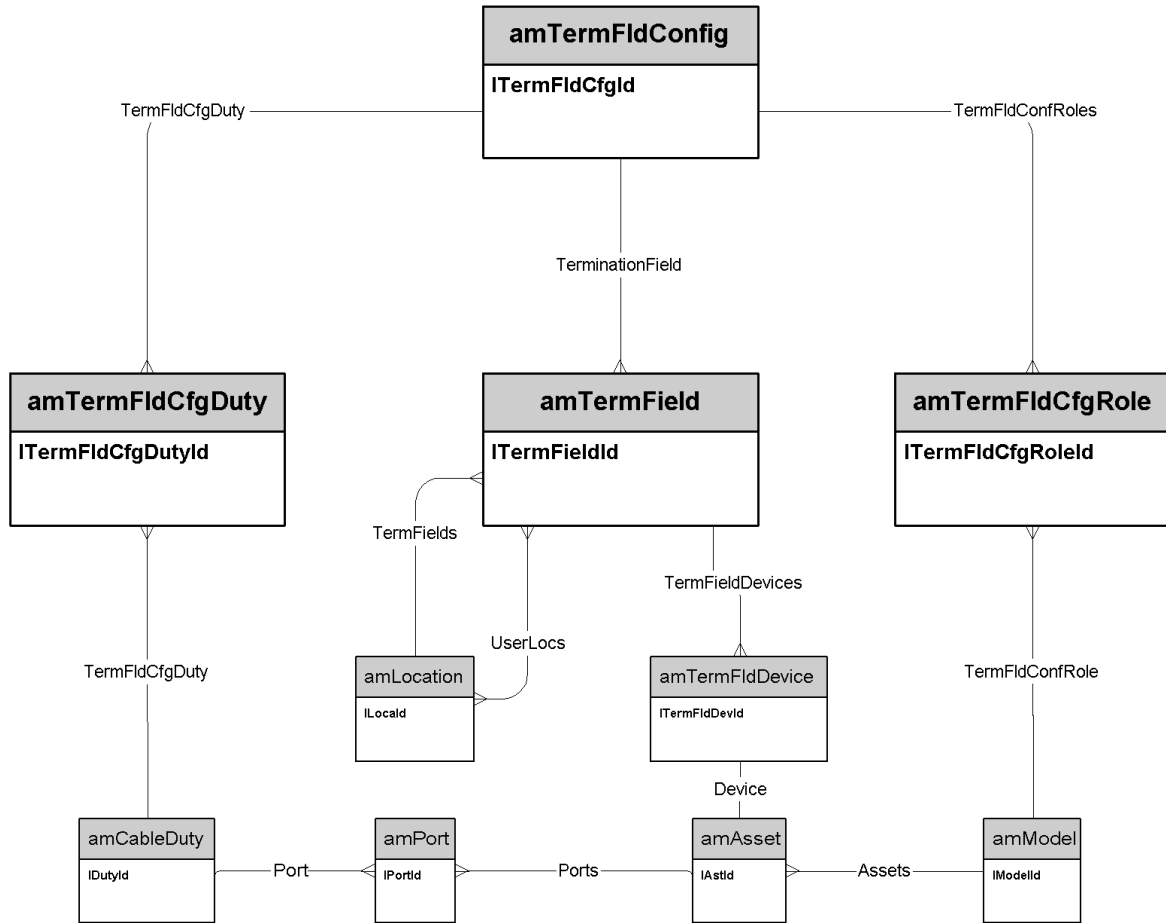
# Topologies



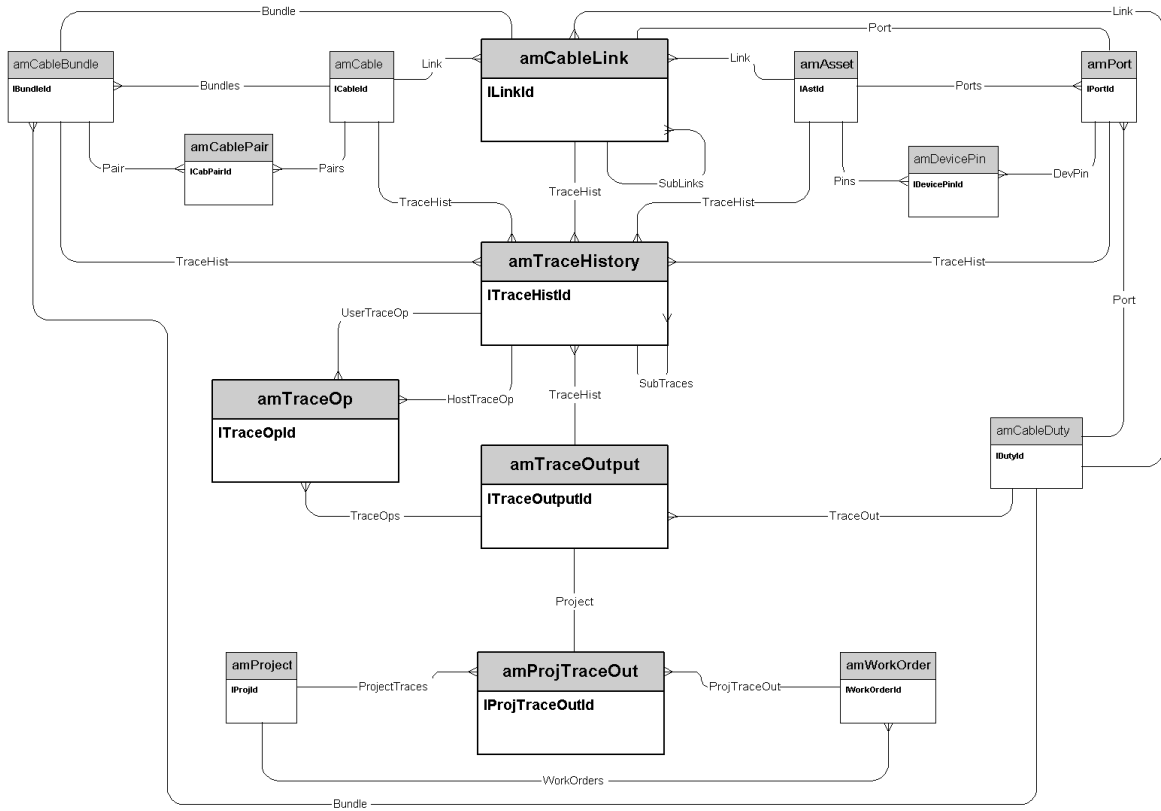
# Topology groups



# Termination-field configurations



# Cable links

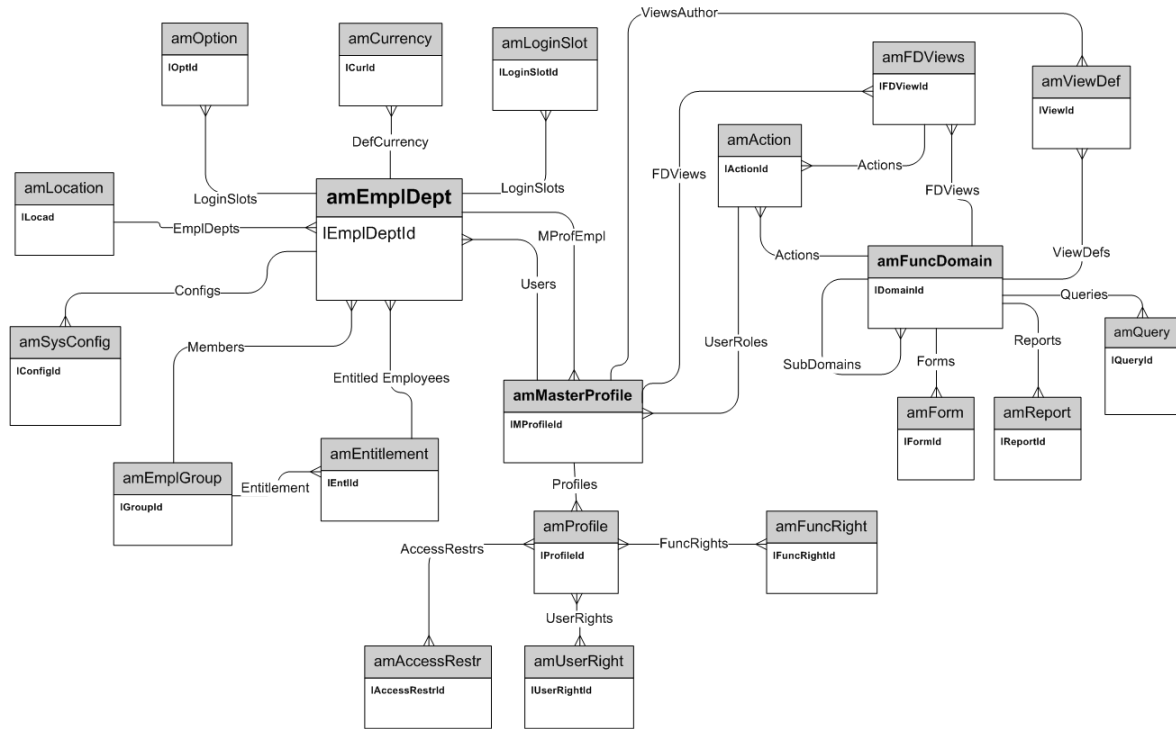


# Chapter 8: Administration

This chapter presents the diagram of the following physical data models:

Access to the database .....	48
Workflows .....	49
Data health check .....	50

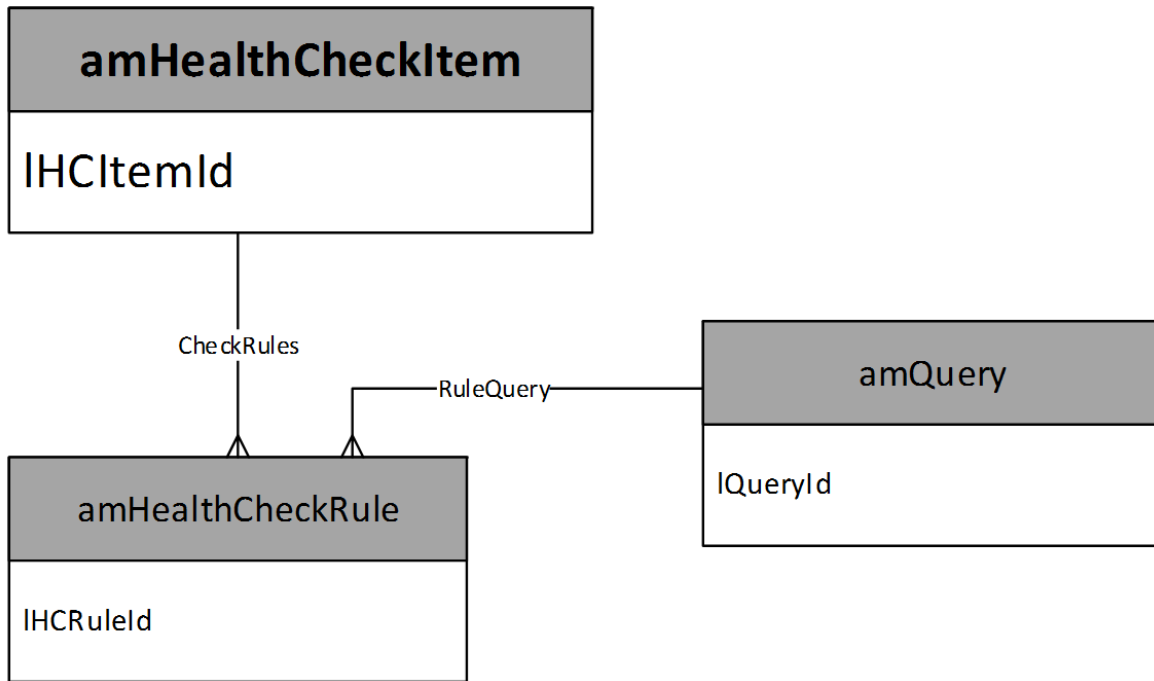
# Access to the database







## Data health check

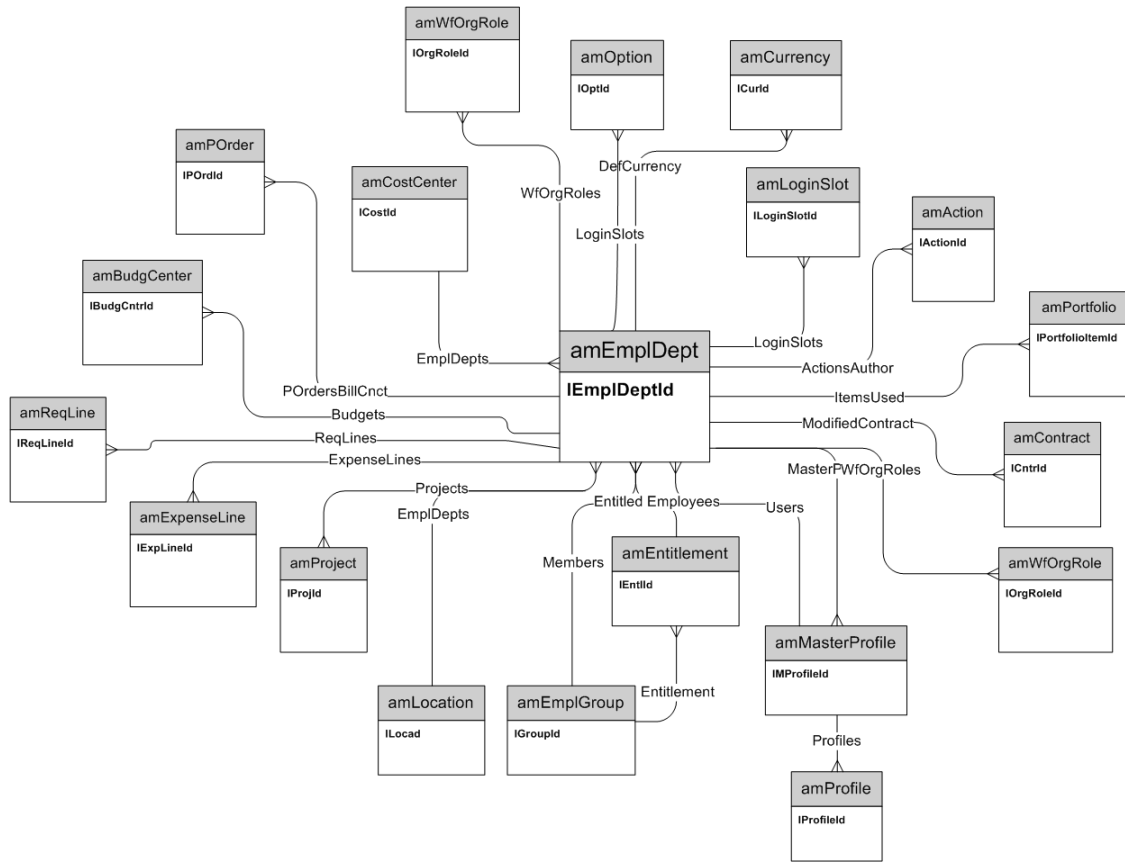


# Chapter 9: Organization

This chapter presents the diagram of the following physical data model:

Employees and Departments .....	52
---------------------------------	----

# Employees and Departments

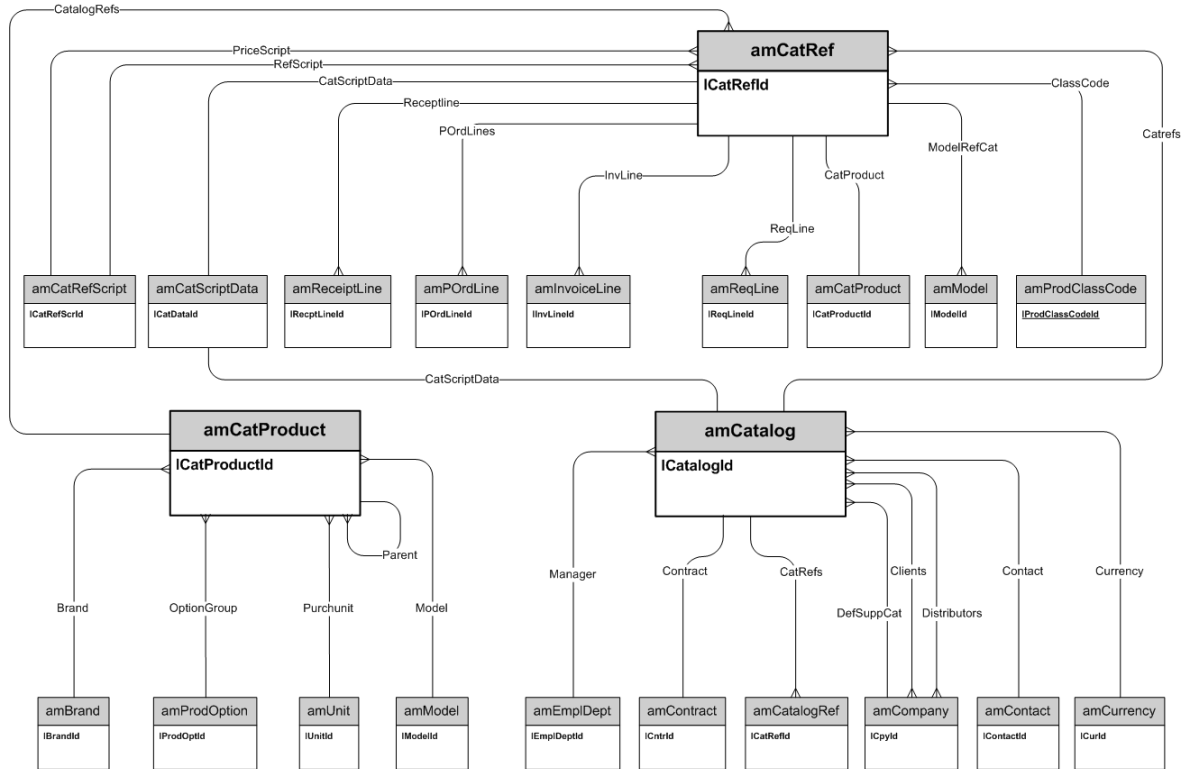


# Chapter 10: Catalog

This chapter presents the diagram of the following physical data model:

Catalog .....	54
---------------	----

# Catalog

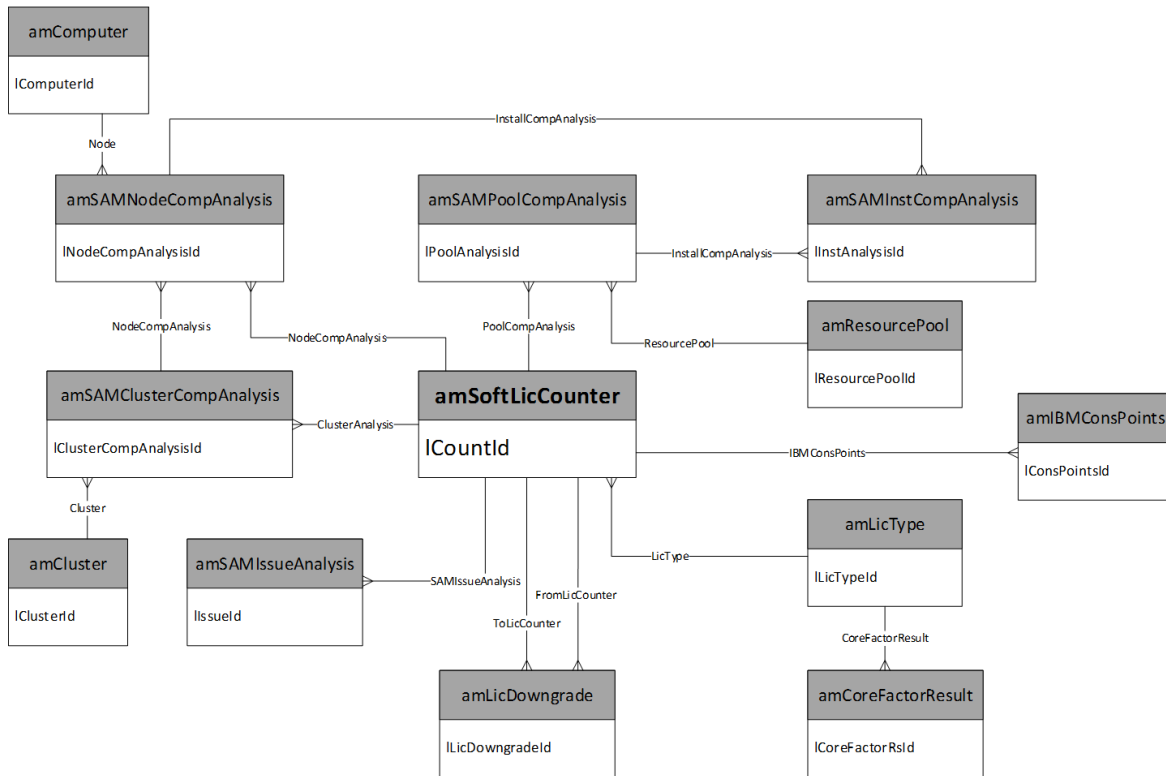


# SAM

This chapter presents the diagram of the following physical data model:

SAM .....55

## SAM



# Send documentation feedback

If you have comments about this document, you can [contact the documentation team](#) by email. If an email client is configured on this system, click the link above and an email window opens with the following information in the subject line:

## **Feedback on Physical Data Models (Asset Manager 9.61)**

Just add your feedback to the email and click send.

If no email client is available, copy the information above to a new message in a web mail client, and send your feedback to [ovdoc-ITSM@hpe.com](mailto:ovdoc-ITSM@hpe.com).

We appreciate your feedback!