



Hewlett Packard
Enterprise

Migrating custom reports from one HPE Automation Insight server to another

White paper

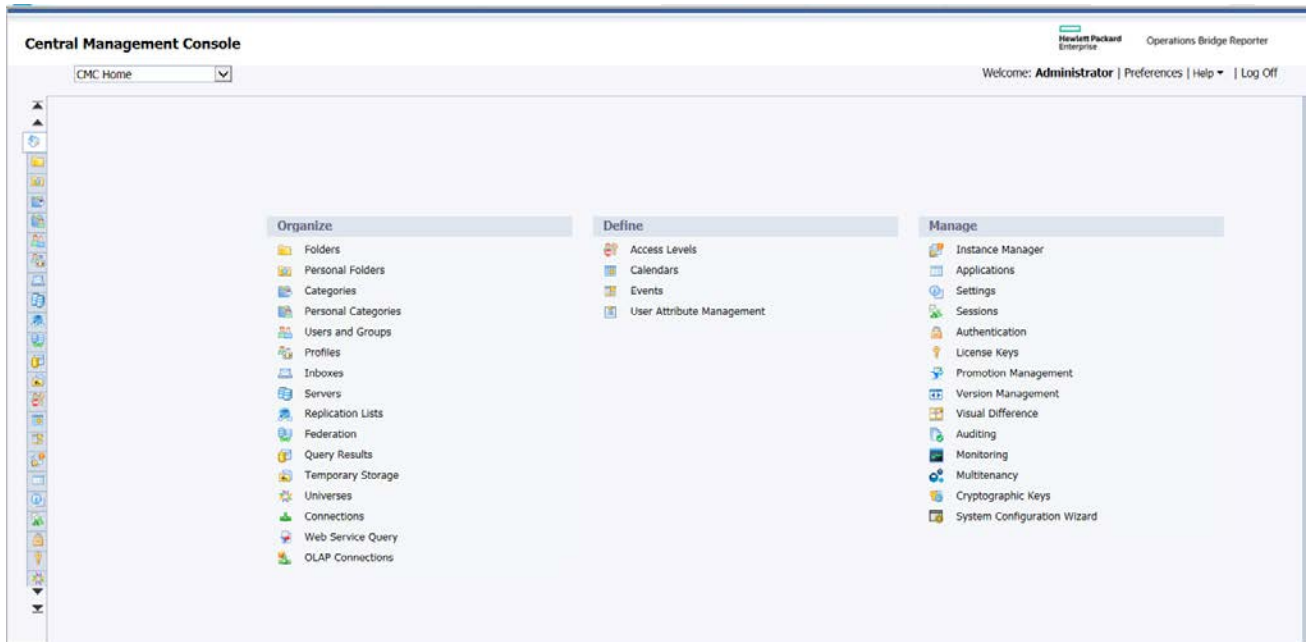
Contents

Migrating custom reports from one AI server to another AI server in the same network.....	2
Migrating custom reports from one AI server to another AI server when the servers are in different networks.....	5

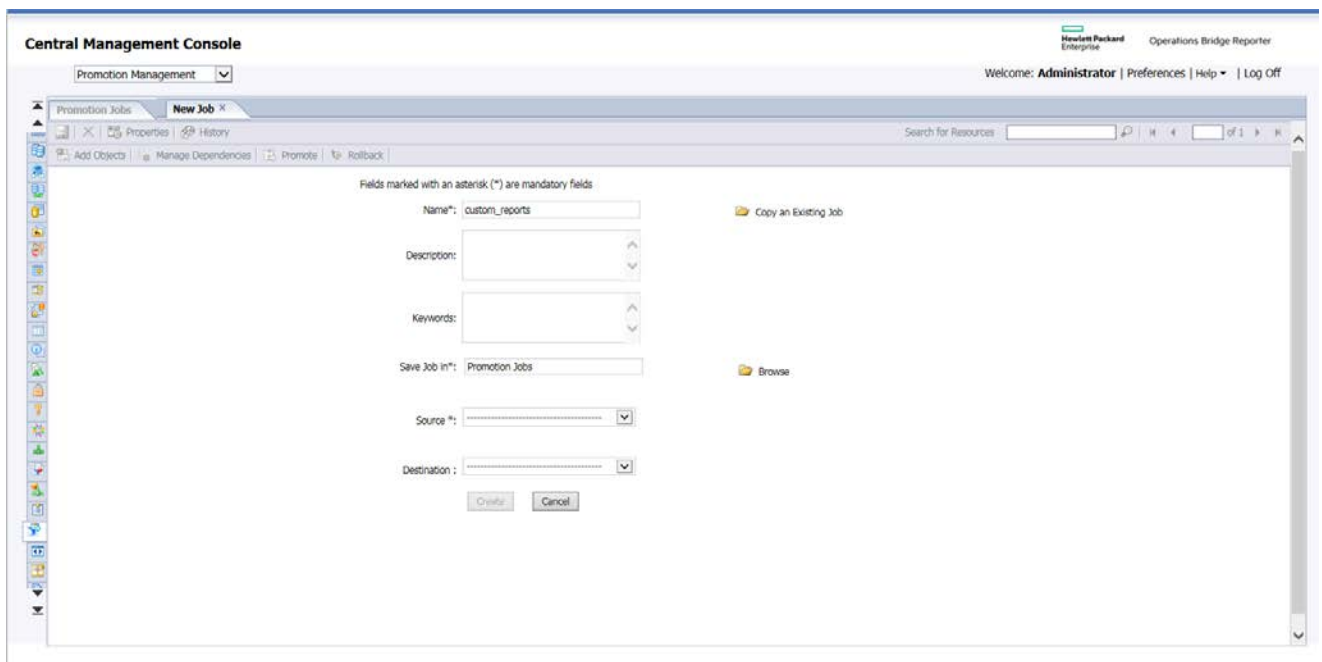
Migrating custom reports from one AI server to another AI server in the same network

Perform the following steps to migrate HPE Automation Insight (AI) reports from one AI server to another AI server when the servers are in the same network:

1. Log on to the Central Management Console (CMC) of AI machine where custom reports are created.
2. Click **Promotion Management** in CMC. The **Promotion Management** screen opens.



3. Click the **New Job** tab. The **New Job** screen opens.

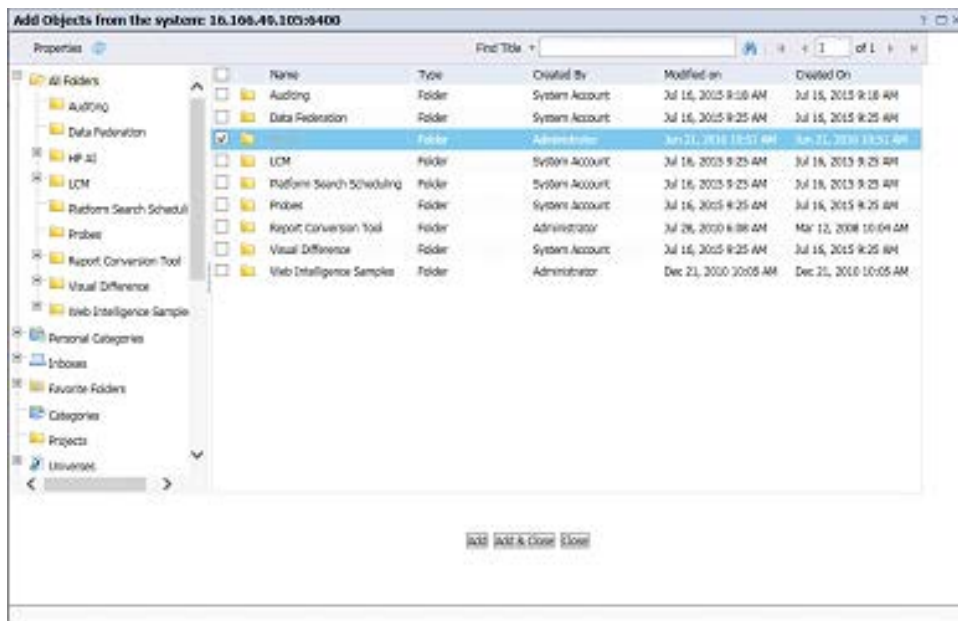


Migrating custom reports from one AI server to another

- To create a job, enter the values in the fields as applicable. The following table describes the fields:

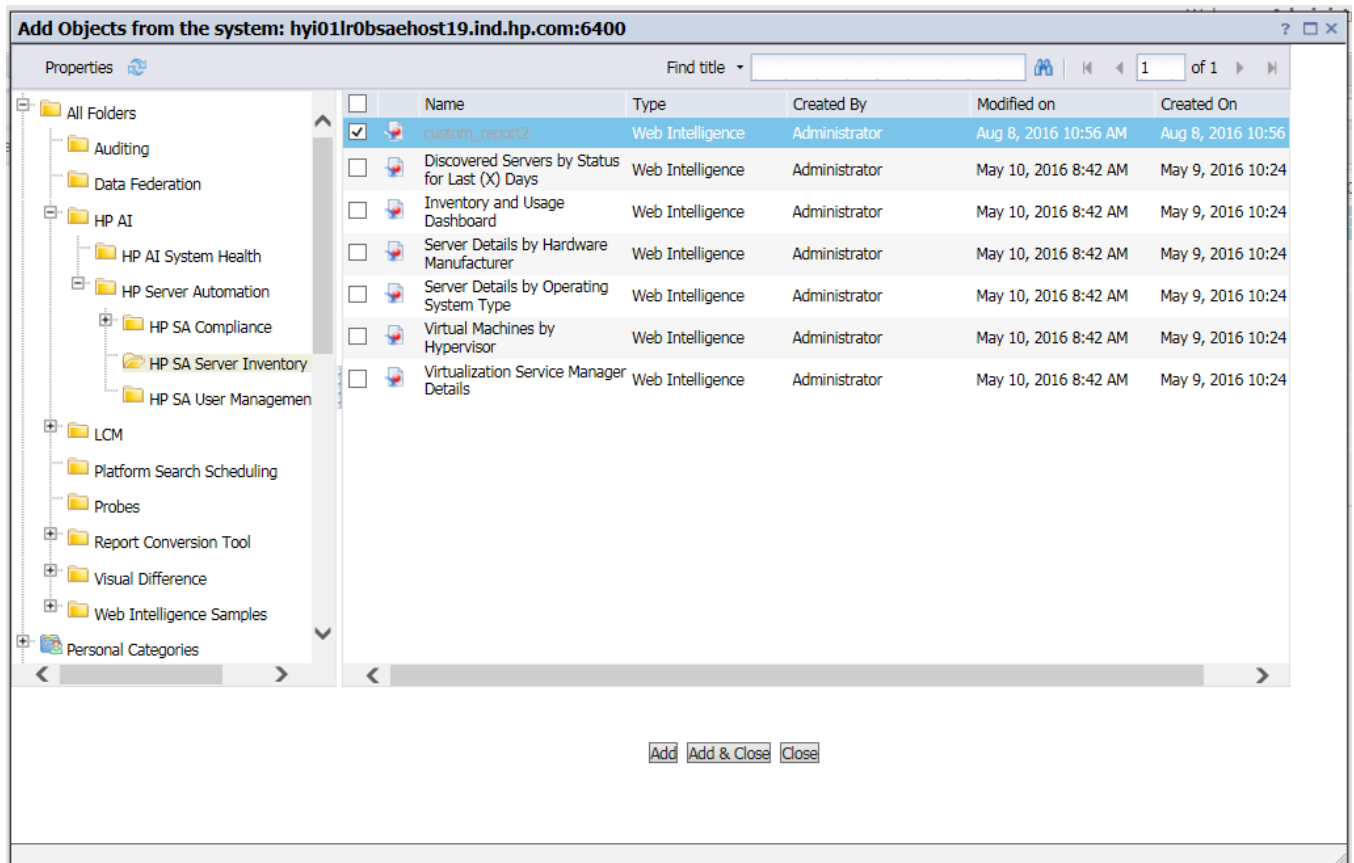
Field	Description
NAME	Name of the job.
DESCRIPTION	Description of the job. This is an optional field.
KEYWORDS	Keywords pertaining to the job. This is an optional field.
SOURCE	Select Login to a new CMS . The Login to System window opens and you need to provide the IP address of an AI computer (in which the custom reports already exist) and the credentials accordingly.
DESTINATION	Select Login to a new CMS . The Login to System window opens and you need to provide the IP address of another AI computer (in which you want the custom reports to be migrated to) and the credentials accordingly.

- Click **Create**. The **Add objects from the system** screen opens from which you need to select the object (AI Custom Reports).
- Select the **HP AI > HP Server Automation** folder, select the required content pack folder, and finally select all the custom reports that you need to migrate to another AI server.
- Click **Add & Close**.



Note: You have the option to select the objects at the folder level or at the sub-folder levels. For example, if you want only the HP SA Server Inventory and Usage custom reports, on the left panel, navigate to **HP AI > HP Server Automation > HP SA Server Inventory and Usage**, and then on the right panel, select all the required custom reports, and click **Add & Close**.

Migrating custom reports from one AI server to another



8. Click the **Promote** tab in the **Promotion Management** screen. A new screen opens as shown in the following figure. At the bottom of this screen click **Promote**.

Migrating custom reports from one AI server to another

Promote - cust

Summary
Security Settings
Test Promote

Systems Confirmation

Source * hyi011r0bsaehost19.ind.hp.com:6400 ✓
Destination 16.166.49.105:6400 ✓ Log Off

Change Management ID

Objects to be promoted (4)

Type	Location	Location
Folder	Folders	HP AI HP Server Automation HP SA Server Inventory and Usage
Web Intelligence	Web Intelligence	custom_report2

Save Promote Schedule Cancel

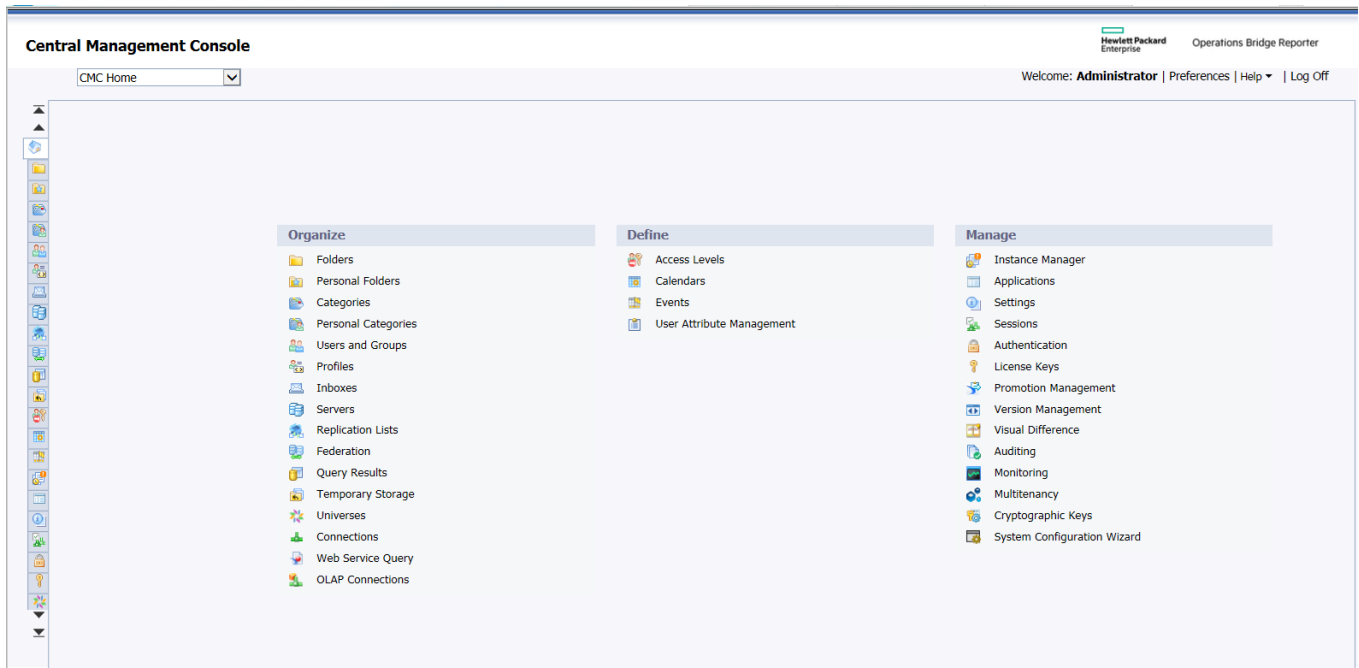
9. You can now log on to a Business Intelligence (BI) launch pad of another AI server and run the custom reports.

Migrating custom reports from one AI server to another AI server when the servers are in different networks

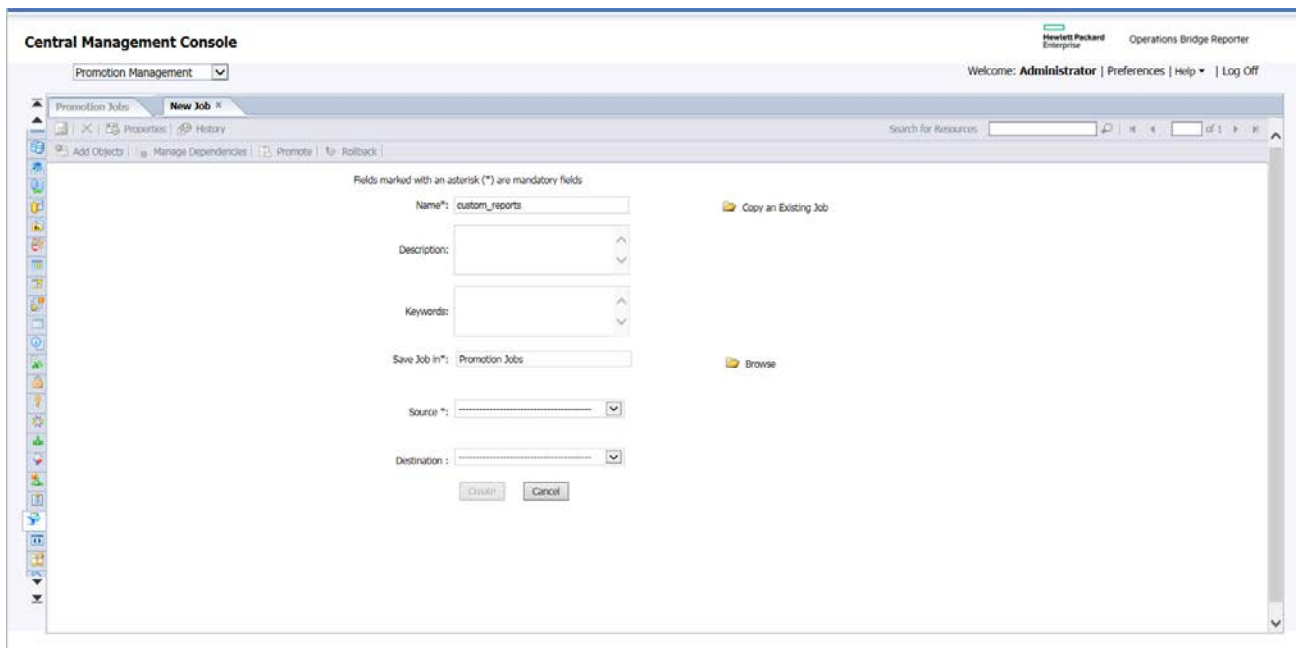
Perform the following steps to migrate the AI reports from one AI server to another AI server when the servers are in different networks:

1. Log on to the Central Management Console (CMC) of AI machine where custom reports are created.
2. Click **Promotion Management** in CMC. The **Promotion Management** screen opens.

Migrating custom reports from one AI server to another



3. Click the **New Job** tab. The **New Job** screen opens.

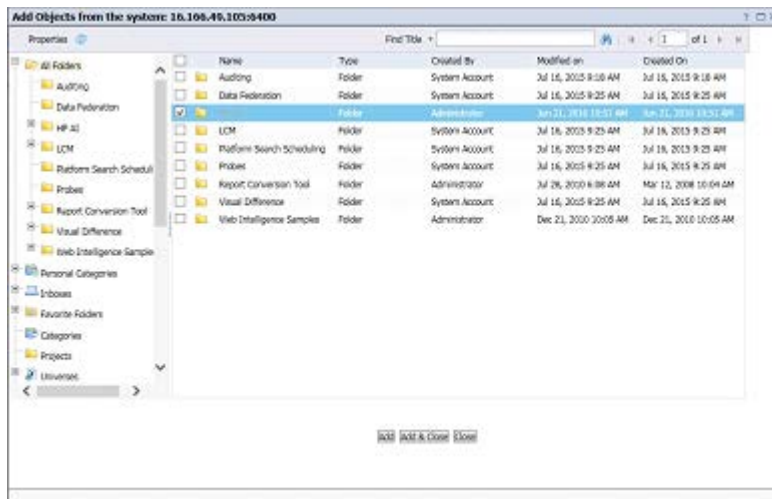


4. To create a job, enter the values in the fields as applicable. The following table describes the fields:

Field	Description
NAME	Name of the job.
DESCRIPTION	Description of the job. This is an optional field.
KEYWORDS	Keywords pertaining to the job. This is an optional field.
SOURCE	Select Login to a new CMS . The Login to System window opens and you need to provide the IP address of an AI computer (in which the custom reports already exist) and the credentials accordingly.
DESTINATION	Select Output to LCMBIAR File .

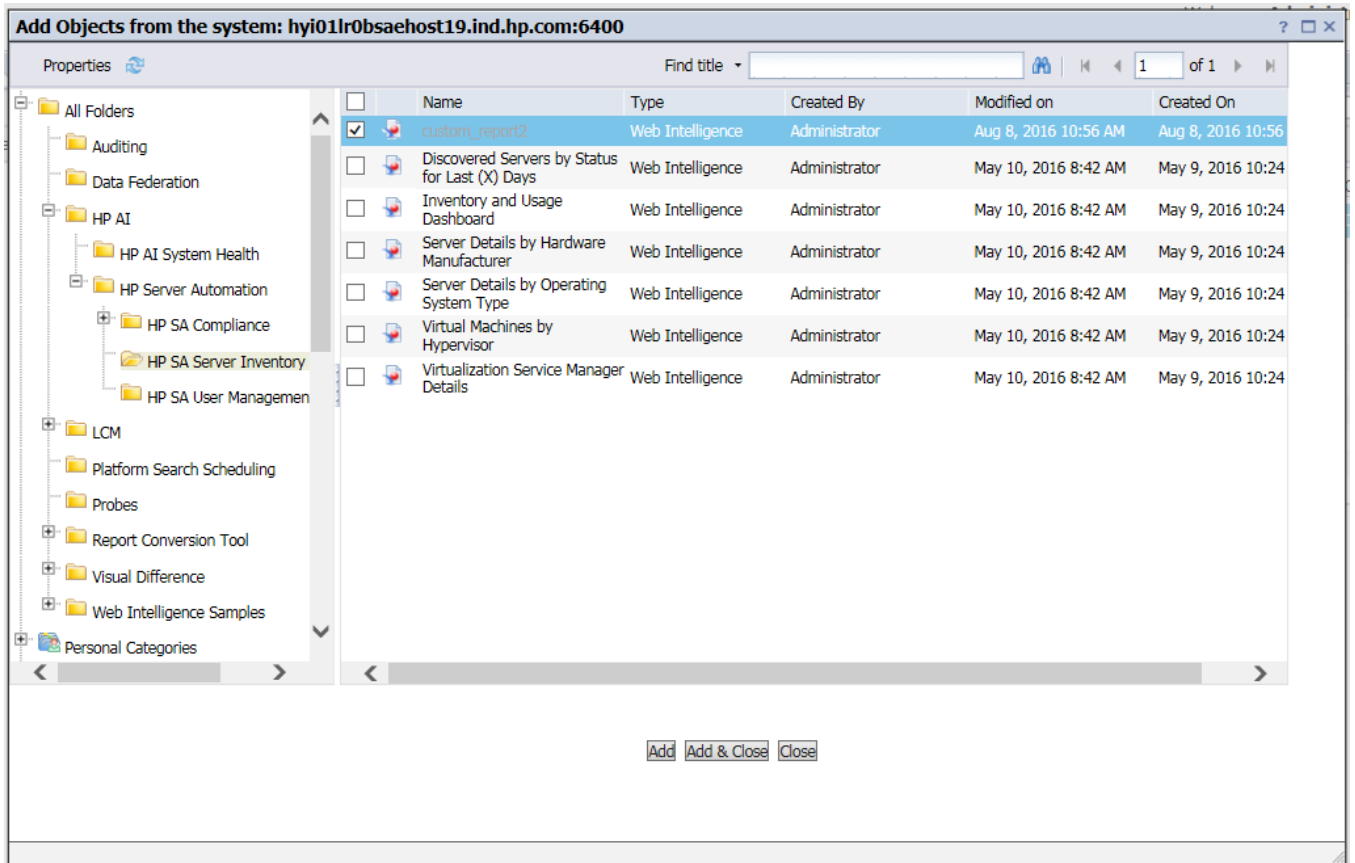
Migrating custom reports from one AI server to another

5. Click **Create**. The **Add objects from the system** screen opens from which you need to select the object (AI Custom Reports).
6. Select the **HP AI > HP Server Automation** folder, select the required content pack folder, and finally select all the custom reports that you need to migrate to another AI server.
7. Click **Add & Close**.



Note: You have the option to select the objects at the folder level or at the sub-folder levels. For example, if you want only the HP SA Server Inventory and Usage custom reports, on the left panel, navigate to **HP AI > HP Server Automation > HP SA Server Inventory and Usage**, and then on the right panel, select all the required custom reports, and click **Add & Close**.

Migrating custom reports from one AI server to another



8. Select the newly created job and click **Promote** tab in the Promotion Management screen.



9. The **Promote - <custom_reports>** screen opens as shown in the following figure. At the bottom of this screen, click **Export**.

Migrating custom reports from one AI server to another

Promote - Custom_report

Summary
Security Settings
Test Promote
LCMBiar File Destination

Systems Confirmation

Source * ✓

Destination

Password Encryption

Change Management ID

Objects to be promoted (4)

Type	Location	Location
Folders		HP Server Automation
		HP SA Server Inventory and Usage
		HP AI
Web Intelligence		custom_report2

Save Export Schedule Cancel

- At the bottom of the screen, you are prompted to either open the file or to save it. Save the LCMBIAR file.
- Log on to the CMC of target the AI computer to which custom reports must be migrated
<https://IP-address of AI:4443/ai-user/BOE/CMC>
- Click **Promotion Management** in CMC.
- Click **Import** tab in Promotion Jobs.
- Select **File System** and browse for the saved LCMBIAR file on the source AI computer.
- Click **OK**.
- A new job screen is displayed. Select the destination as **Login to a new CMS** from the dropdown menu.
- The **Login to System** screen opens in which you have to provide the IP address of another AI computer (to which to migrate the custom reports) and the respective credentials and click **Login**.
- On the **New Job** tab, click **Create**.

19. The newly created job is displayed in the **Promotion Management** screen. Click the **Promote** tab. The **Promote – <custom-report>** screen is displayed.
20. Click **Promote**.
21. You can now log on to a BI launch pad of another AI server and run the custom reports.

© Copyright 2016 Hewlett Packard Enterprise Development LP. The information contained herein is subject to change without notice. The only warranties for Hewlett Packard Enterprise products and services are set forth in the express warranty statements accompanying such products and services. Nothing herein should be construed as constituting an additional warranty. Hewlett Packard Enterprise shall not be liable for technical or editorial errors or omissions contained herein.

This document contains confidential and/or legally privileged information. It is intended for Hewlett Packard Enterprise and Channel Partner Internal Use only. If you are not an intended recipient as identified on the front cover of this document, you are strictly prohibited from reviewing, redistributing, disseminating, or in any other way using or relying on the contents of this document.

4AA4-xxxxENW, September 2016