



Enterprise Maps

Software Version: 3.20

Windows and Linux Operating System

Enterprise Maps Workbench

Document Release Date: August 2016

Software Release Date: August 2016



Hewlett Packard
Enterprise

Legal Notices

Warranty

The only warranties for Hewlett Packard Enterprise products and services are set forth in the express warranty statements accompanying such products and services. Nothing herein should be construed as constituting an additional warranty. Hewlett Packard Enterprise shall not be liable for technical or editorial errors or omissions contained herein.

The information contained herein is subject to change without notice.

Restricted Rights Legend

Confidential computer software. Valid license from Hewlett Packard Enterprise required for possession, use or copying. Consistent with FAR 12.211 and 12.212, Commercial Computer Software, Computer Software Documentation, and Technical Data for Commercial Items are licensed to the U.S. Government under vendor's standard commercial license.

Copyright Notice

© 2003 - 2016 Hewlett Packard Enterprise Development LP

Trademark Notices

Adobe™ is a trademark of Adobe Systems Incorporated.

Microsoft® and Windows® are U.S. registered trademarks of Microsoft Corporation.

UNIX® is a registered trademark of The Open Group.

This product includes an interface of the 'zlib' general purpose compression library, which is Copyright © 1995-2002 Jean-loup Gailly and Mark Adler.

Documentation Updates

The title page of this document contains the following identifying information:

- Software Version number, which indicates the software version.
- Document Release Date, which changes each time the document is updated.
- Software Release Date, which indicates the release date of this version of the software.

To check for recent updates or to verify that you are using the most recent edition of a document, go to: <https://softwaresupport.hp.com/>.

This site requires that you register for an HP Passport and to sign in. To register for an HP Passport ID, click **Register** on the HP Software Support site or click **Create an Account** on the HP Passport login page.

You will also receive updated or new editions if you subscribe to the appropriate product support service. Contact your HPE sales representative for details.

Support

Visit the HP Software Support site at: <https://softwaresupport.hp.com>.

This website provides contact information and details about the products, services, and support that HP Software offers.

HP Software online support provides customer self-solve capabilities. It provides a fast and efficient way to access interactive technical support tools needed to manage your business. As a valued support customer, you can benefit by using the support website to:

- Search for knowledge documents of interest
- Submit and track support cases and enhancement requests
- Download software patches
- Manage support contracts
- Look up HP support contacts
- Review information about available services
- Enter into discussions with other software customers
- Research and register for software training

Most of the support areas require that you register as an HP Passport user and to sign in. Many also require a support contract. To register for an HP Passport ID, click **Register** on the HP Support site or click **Create an Account** on the HP Passport login page.

To find more information about access levels, go to: <https://softwaresupport.hp.com/web/softwaresupport/access-levels>.

HP Software Solutions Now accesses the HPSW Solution and Integration Portal website. This site enables you to explore HP Product Solutions to meet your business needs, includes a full list of Integrations between HP Products, as well as a listing of ITIL Processes. The URL for this website is <http://h20230.www2.hp.com/sc/solutions/index.jsp>.

About this PDF Version of Online Help

This document is a PDF version of the online help. This PDF file is provided so you can easily print multiple topics from the help information or read the online help in PDF format. Because this content was originally created to be viewed as online help in a web browser, some topics may not be formatted properly. Some interactive topics may not

be present in this PDF version. Those topics can be successfully printed from within the online help.

Contents

| | |
|-------------------------------------|----|
| HPE Enterprise Maps Workbench | 5 |
| Installing HPE EM Workbench | 6 |
| Configuring HPE EM Workbench | 8 |
| Switching to Admin Mode | 8 |
| Setting JVM Memory | 9 |
| Setting Timeout | 9 |
| Resetting Security Storage | 9 |
| Proxy Configuration | 10 |
| Configuring SSL | 11 |

HPE Enterprise Maps Workbench

HPE EM Workbench consists of the following tools, enabling you to customize your deployment of HPE Enterprise Maps.

- Assertion Editor

Customizes the conditions applied by your business policies within HPE EM. For more information, see *HPE Enterprise Maps Assertion Editor User Guide*.

- Customization Editor

Customizes the underlying System Data Model (SDM) within HPE EM. For more information, see *HPE Enterprise Maps Customization Editor User Guide*.

- Report Editor

Customizes report definitions for use with HPE EM. For more information, see *HPE Enterprise Maps Report Editor User Guide*.

- Taxonomy Editor

Customizes the taxonomies used to categorize artifacts in HPE EM. For more information, see *HPE Enterprise Maps Taxonomy Editor User Guide*.

Installing HPE EM Workbench

HPE EM Workbench is an Eclipse development platform distributed as a zip file, **hpe-em-workbench-3.20-win64.zip**

Note: HPE EM Workbench requires Java SE Development Kit (JDK) 1.8.0 (64 bit version only) or higher. You must include the path to this version of the JDK in the **JAVA_HOME** environment variable.

To install HPE Enterprise Maps Workbench:

1. Extract the archive to your required location.

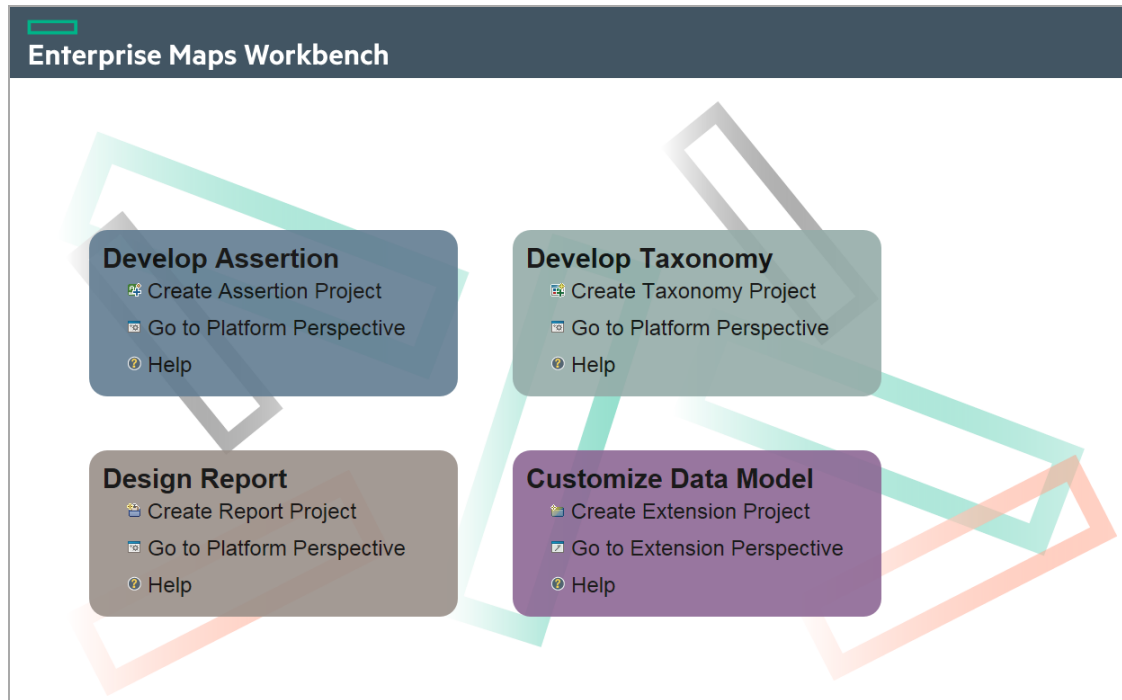
Note: In this document, the location where you have extracted the archive is referred as **WB_HOME**.

Note: Ensure that the path where you have extracted must not be longer than 97 characters.

To Start Enterprise Maps Workbench:

1. Execute **.exe** from **WB_HOME/em-workbench/start.exe**.

The Enterprise Maps Workbench Workbench welcome screen is displayed.



Click one of the options to open the respective editor tools, start a new project, or view the documentation set.

Click **Help > Welcome** from the menu options of any of the editor tools to return to the welcome screen.

Configuring HPE EM Workbench

This topic contains configurations that generally apply to the whole HPE EM Workbench suite. The default configuration should work out of the box. However in some cases you need to tune HPE EM Workbench to suit your working environment. This section covers the following topics:

- [Switching to Admin Mode](#)
- [Setting JVM Memory](#)
- [Setting Timeout](#)
- [Resetting Security Storage](#)
- [Proxy Configuration](#)
- [Configuring SSL](#)

HPE EM Workbench editors may require additional configurations. For more specific configurations on specific editor, see *Getting Started* section in the respective editor's guide.

Switching to Admin Mode

By default, HPE EM Workbench runs in **normal** mode which prevents users from uploading system taxonomies (IDs start with `uddi:systinet.com:soa:model:taxonomies`) and the Report Editor `.rptlibrary` file to HPE EM servers. If you need to work with system taxonomies or want to upload the `.rptlibrary` file you must switch from **normal** mode to **admin** mode.

Caution: The HPE EM uses hard-coded values from system taxonomies. Changing or removing them may cause errors.

To Switch HPE EM Workbench to Admin Mode:

1. Open `WB_HOME/em-workbench/configuration/config.ini` with a text editor.
2. Add `mode=admin` to `config.ini`.
3. Restart the HPE EM Workbench.

Setting JVM Memory

HPE EM Workbench is memory-intensive. If you experience performance issues, HPE recommends to increase the memory allocation.

To increase the memory allocation:

1. Open `WB_HOME/em-workbench/start.ini` for editing.
2. Set the new values as follows:
 - `-Xms1024m`
 - `-Xmx2048m`
3. Save the changes and restart the HPE EM Workbench.

Setting Timeout

HPE EM Workbench downloading from HPE EM may time out. If you experience issues, HPE recommends increasing the time out.

To increase the Timeout:

1. Open `WB_HOME/em-workbench/start.ini` (or `eclipse.ini` for stand-alone installation) for editing.
2. Set the new value as follows:

```
-Dorg.em.platform.rest.Client.timeout=600000
```

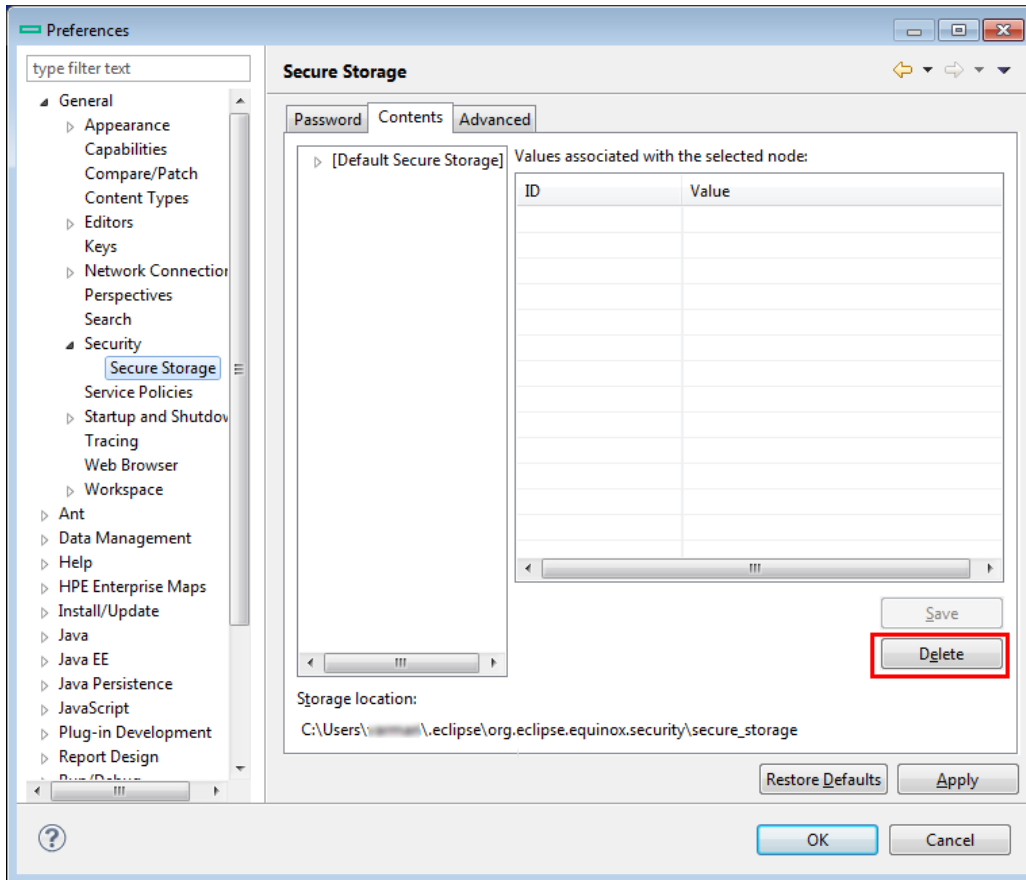
The value is in milliseconds with a default value of 120000 (2 minutes).
3. Save the changes and restart the HPE EM Workbench.

Resetting Security Storage

HPE EM Workbench may fail to store saved credentials of servers. In such cases, HPE recommends to clear the secure storage.

To reset the secure storage:

1. In Enterprise Maps Workbench, go to **Windows > Preferences > General > Security > Security Storage > Contents** tab.
2. Click root node in **Default Secure Storage** and click **Delete**.



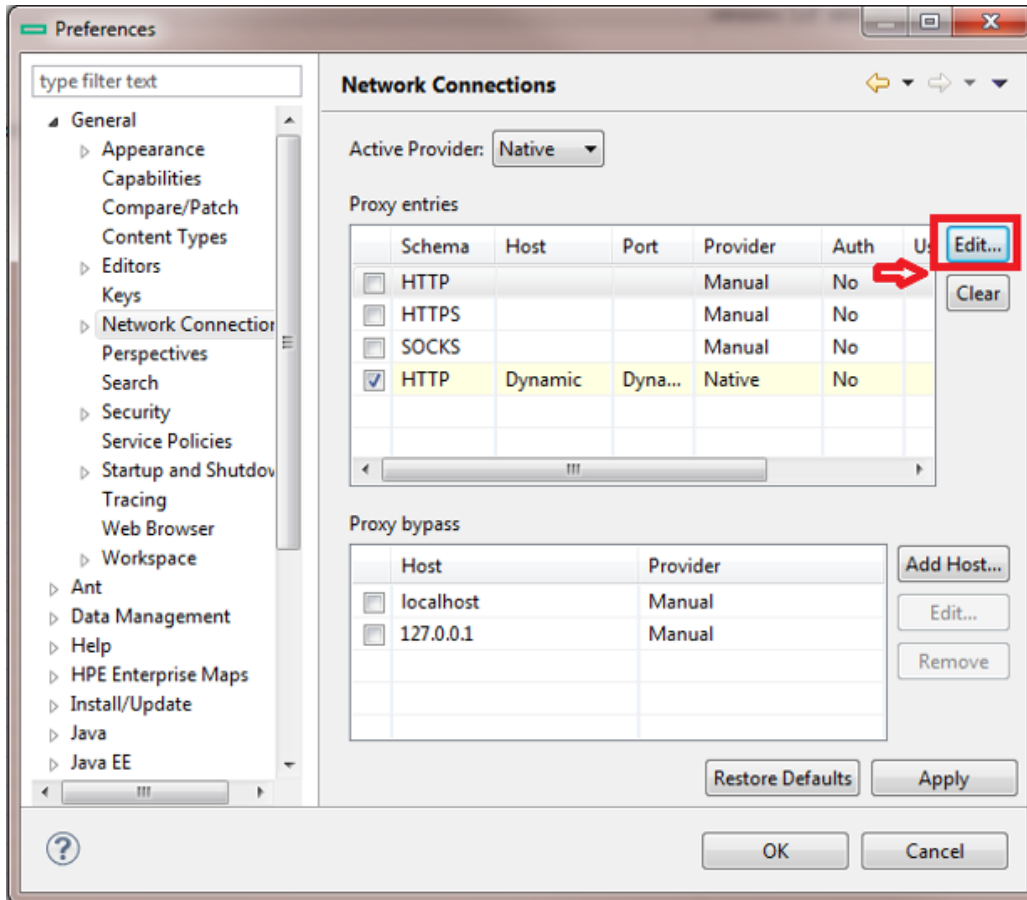
3. Restart the HPE EM Workbench.

Proxy Configuration

You can connect to HPE Enterprise Maps from HPE EM Workbench via proxy. You must configure the proxy settings in HPE EM Workbench manually.

To configure the proxy settings in HPE EM Workbench:

1. Go to **Windows > Preferences > General > Network Connections**.
2. In **Proxy entries** table, click **Edit** to enter the proxy setting information.



3. Click **Apply** or **OK** to apply the changes.

Configuring SSL

By default, HPE EM Workbench trusts all HPE EM server certificates. You may want HPE EM Workbench to verify HPE EM server certificates.

To verify the HPE EM server certificates:

1. Add the following options to `WB_HOME/em-workbench/start.ini`:
 - `-Dcom.hp.em.security.ssl.verifyCert=true`
 - `-Djavax.net.ssl.trustStore=USER_TRUSTSTORE`
 - `-Djavax.net.ssl.trustStorePassword=TRUSTSTORE_PASS`
 - `-Djavax.net.ssl.trustStoreType=TRUSTSTORE_FORMAT`

If HPE EM is configured for 2-way SSL, you must provide HPE EM Workbench certificates to HPE EM.

To provide HPE EM Workbench client certificates to HPE EM:

1. Add the following options to `WB_HOME/em-workbench/start.ini`:
 - `-Djavax.net.ssl.keyStore=USER_KEYSTORE`
 - `-Djavax.net.ssl.keyStorePassword=KEYSTORE_PASS`
 - `-Djavax.net.ssl.keyStoreType=KEYSTORE_FORMAT`