

# HP Server Automation

*Ultimate Edition*

Software Version: 10.23

## SA Reports Guide

Document Release Date: June 2016

Software Release Date: June 2016



## Legal Notices

### Warranty

The only warranties for HP products and services are set forth in the express warranty statements accompanying such products and services. Nothing herein should be construed as constituting an additional warranty. HP shall not be liable for technical or editorial errors or omissions contained herein.

The information contained herein is subject to change without notice.

### Restricted Rights Legend

Confidential computer software. Valid license from HP required for possession, use or copying. Consistent with FAR 12.211 and 12.212, Commercial Computer Software, Computer Software Documentation, and Technical Data for Commercial Items are licensed to the U.S. Government under vendor's standard commercial license.

### Copyright Notices

© Copyright 2001-2016 Hewlett-Packard Development Company, L.P.

### Trademark Notices

Adobe® is a trademark of Adobe Systems Incorporated.

Intel® and Itanium® are trademarks of Intel Corporation in the U.S. and other countries.

Microsoft®, Windows®, Windows® XP are U.S. registered trademarks of Microsoft Corporation.

Oracle and Java are registered trademarks of Oracle and/or its affiliates.

UNIX® is a registered trademark of The Open Group.

## Support

Visit the HP Software Support Online website at:

**<http://www.hp.com/go/hpsoftwaresupport>**

This website provides contact information and details about the products, services, and support that HP Software offers.

HP Software online support provides customer self-solve capabilities. It provides a fast and efficient way to access interactive technical support tools needed to manage your business. As a valued support customer, you can benefit by using the support website to:

- Search for knowledge documents of interest
- Submit and track support cases and enhancement requests
- Download software patches
- Manage support contracts
- Look up HP support contacts
- Review information about available services
- Enter into discussions with other software customers
- Research and register for software training

Most of the support areas require that you register as an HP Passport user and sign in. Many also require a support contract. To register for an HP Passport ID, go to:

<http://h20229.www2.hp.com/passport-registration.html>

To find more information about access levels, go to:

[http://h20230.www2.hp.com/new\\_access\\_levels.jsp](http://h20230.www2.hp.com/new_access_levels.jsp)

## Support Matrices

For complete support and compatibility information, see the support matrix for the relevant product release. All support matrices and product manuals are available here on the HP Software Support Online website:

[http://h20230.www2.hp.com/sc/support\\_matrices.jsp](http://h20230.www2.hp.com/sc/support_matrices.jsp)

You can also download the *HP Server Automation Support and Compatibility Matrix* for this release from the HP Software Support Online Product Manuals website:

<http://h20230.www2.hp.com/selfsolve/manuals>

## Documentation Updates

All the latest Server Automation product documentation for this release is available from the SA Documentation Library:

[http://support.openview.hp.com/selfsolve/document/KM00417675/binary/SA\\_10\\_docLibrary.html](http://support.openview.hp.com/selfsolve/document/KM00417675/binary/SA_10_docLibrary.html)

Use the SA Documentation Library to access any of the guides, release notes, support matrices, and white papers relevant to this release or to download the full documentation set as a bundle. The SA Documentation Library is updated in each release and whenever the release notes are updated or a new white paper is introduced.

### How to Find Information Resources

You can access the information resources for Server Automation using any of the following methods:

Method 1: Access the latest individual documents by title and version with the new SA Documentation Library

Method 2: Use the complete documentation set in a local directory with All Manuals Downloads

Method 3: Search for any HP product document in any supported release on the HP Software Documentation Portal

#### To access individual documents:

- 1 Go to the SA 10.x Documentation Library:  
[http://support.openview.hp.com/selfsolve/document/KM00417675/binary/SA\\_10\\_docLibrary.html](http://support.openview.hp.com/selfsolve/document/KM00417675/binary/SA_10_docLibrary.html)
- 2 Log in using your HP Passport credentials.
- 3 Locate the document title and version that you want, and then click **go**.

#### To use the complete documentation set in a local directory:

- 1 To download the complete documentation set to a local directory:
  - a Go to the SA Documentation Library:  
[http://support.openview.hp.com/selfsolve/document/KM00417675/binary/SA\\_10\\_docLibrary.html](http://support.openview.hp.com/selfsolve/document/KM00417675/binary/SA_10_docLibrary.html)
  - b Log in using your HP Passport credentials.
  - c Locate the All Manuals Download title for the SA 10.1 version.
  - d Click the **go** link to download the ZIP file to a local directory.

- e Unzip the file.
- 2 To locate a document in the local directory, use the Documentation Catalog (docCatalog.html), which provides an indexed portal to the downloaded documents in your local directory.
- 3 To search for a keyword across all documents in the documentation set:
  - a Open any PDF document in the local directory.
  - b Select **Edit > Advanced Search** (or Shift+Ctrl\_F).
  - c Select the All PDF Documents option and browse for the local directory.
  - d Enter your keyword and click Search.

To find additional documents on the HP Software Documentation Portal:

Go to the HP Software Documentation Portal:

**<http://h20230.www2.hp.com/selfsolve/manuals>**

This site requires that you register for an HP Passport and sign in. To register for an HP Passport ID, click the **New users - please register** link on the HP Passport login page.

You will also receive updated or new editions if you subscribe to the appropriate product support service. Contact your HP sales representative for details. See Documentation Change Notes for a list of any revisions.

## Product Editions

There are two editions of Server Automation:

- Server Automation (SA) is the Ultimate Edition of Server Automation. For information about Server Automation, see the SA Release Notes and the SA User Guide: Server Automation.
- Server Automation Virtual Appliance (SAVA) is the Premium Edition of Server Automation. For more information about what SAVA includes, see the SAVA Release Notes and the SAVA at a Glance Guide.





# Contents

- 1 [Server Automation Reports Overview](#) .....9
  - SA Client Reports Embedded in SA Client .....10
  - HP Automation Insight Reports for SA.....10
- 2 [SA Client Reports](#) .....11
  - Reports Features .....11
  - HP Server Automation Client Reports .....12
  - User Permissions for Reports .....13
  - Launching the Reports Feature.....13
  - Reports Display .....13
  - Running and Modifying Reports .....15
    - Running a Report.....15
    - Modifying Report Parameters.....15
  - Report Results .....16
    - Viewing a Graphical Report .....16
    - Viewing a List Report .....17
    - Exporting a Report .....17
    - Printing a Report .....18
    - Report Results Restrictions.....18





# 1 Server Automation Reports Overview

This document gives a general overview of the Server Automation (SA) reports. There are two venues for SA reports, SA Client reports that are available in the SA Client, and Automation Insight (AI) reports.

See chapter discusses SA Client Reports embedded in the SA Client.

For information about viewing, launching, and scheduling reports, and building custom reports, see the *Reports* section of the HP Automation Insight User Guide.

For specific information about HP Automation Insight reports and universes, see the solution pack user guides that are provided with each solution pack available for download on HPLN (at <http://www.hp.com/go/livenetwork>).

**IMPORTANT:** LNC will not list, download, preview, or import content if you do not have the proper products specified! See the *Live Network connector Users Guide* on the HP Live Network for instructions on enabling products.

- Subscribe to the relevant reports streams for your version of SA and the reports you wish to run. To download the report streams:
  - Go to the HP Live Network and click the Live Network connector link.
  - Download the LNC Users guide for instructions on using the HP Live Network and information about the correct report streams.
  - Once the LNC has been configured for your specific product(s), you can also see a list of available streams via:

```
live-network-connector list-streams
```

Additional information may be available on the individual streams by using the “describe” command. This information may provide a long text description and a URL for where to locate additional information on the specified Stream/content.

## URLs:

- HP Live Network URL = <http://www.hp.com/go/livenetwork>.
- The HP documentation portal URL = <http://h20230.www2.hp.com/selfsolve/manuals>



For additional information about how to access and run these reports, see the online help in the respective Automation Insight tool.

## SA Client Reports Embedded in SA Client

SA Client reports provide real-time information about managed servers, virtual servers, network devices, and user and security permissions in your environment. They are parameterized and actionable—which means that you can perform appropriate actions on objects, such as a policy or an audit, within the report. These reports are also exportable to your local file system (as .html, .pdf, or .xls files) to facilitate use within your organization.

See [Chapter 2, “SA Client Reports.”](#)

## HP Automation Insight Reports for SA

HP Automation Insight (AI) is an HP product that leverages HP Vertica analytics database technology and provides a complete set of ETL tools, dimensional data model, reports, dashboards, and analytics systems and content for the HP suite of automation tools.

For information about viewing, launching, and scheduling reports, and building custom reports, see the HP Automation Insight User Guide.

For specific information about HP Automation Insight reports and universes, see the solution pack user guides that are provided with each solution pack available for download on HPLN.

## 2 SA Client Reports

SA Client reports provide comprehensive, real-time information about managed servers, virtual servers, network devices, and user and security permissions in your environment. These parameterized reports are presented in graphical and tabular format, and are actionable—which means that you can perform appropriate actions on objects, such as a policy or an audit, within the report. These reports are also exportable to your local file system (as .html, .pdf, or .xls files) to facilitate use within your organization.

This section contains information about the types of SA Client reports, how to modify report parameters, how to run the reports, and how to perform actions in the report results.

Additional reporting for SA Client features is available in the HP Automation Insight Product.

For information about viewing, launching, and scheduling reports, and building custom reports, see the *HP Automation Insight User Guide*.

For specific information about HP Automation Insight reports and universes, see the solution pack user guides that are provided with each solution pack available for download on HPLN.

In this section:

- [Reports Features](#)
- [HP Server Automation Client Reports](#)
- [User Permissions for Reports](#)
- [Launching the Reports Feature](#)
- [Reports Display](#)
- [Running a Report](#)
- [Report Results](#)

### Reports Features

SA Client Reports enable you to perform enterprise health assessments by providing the following features:

- Actionable reports that enable you to take the appropriate action on objects within the reports. For example, in the list view of a compliance report, you can select a server and open a Remote Terminal or Server Explorer to browse it, perform an audit, create a snapshot, create a package, and so on.
- A single entry point in the SA Client Dashboard for all reports.
- Reports that are data-secured—controlled by the user's permissions. You can view all objects that you have read permissions for. You can perform actions on objects that you have write permissions for.
- Reports that are exportable to .html, .pdf, and .xls formats. You can export reports to your local file system for use within your organization.

# HP Server Automation Client Reports

The following table lists the SA Client Reports by report folders.

**table 1 SA Client Reports**

| Report Folder             | Report Title  |
|---------------------------|---|
| Server Reports            | <ul style="list-style-type: none"> <li>• Servers by Customer</li> <li>• Servers by Facility</li> <li>• Servers by Manufacturer</li> <li>• Servers by Model</li> <li>• Servers by Operating System</li> <li>• Servers by Use</li> </ul>  |
| Virtualization Reports    | <ul style="list-style-type: none"> <li>• Solaris 10               <ul style="list-style-type: none"> <li>— Virtual Servers by Hypervisors (zones only)</li> <li>— Resource Allocation by Hypervisors (zones only)</li> </ul> </li> </ul>  |
| User and Security Reports | <ul style="list-style-type: none"> <li>• Client and Feature Permissions</li> <li>• Customer/Facility Permissions and Device Group Permission Overrides</li> <li>• User Groups Memberships</li> <li>• User Login</li> <li>• Administrator Actions</li> <li>• Users and Authorizations, By User Group</li> <li>• Users and Authorizations, By Individual User Group</li> <li>• Administrator Customer Groups</li> <li>• Server Permissions, By User</li> <li>• Server Permissions, By Server</li> <li>• OGFS Permissions, By User</li> <li>• OGFS Permissions, By Server</li> </ul> |
| Network Reports           | <ul style="list-style-type: none"> <li>• Connections by Network Device</li> <li>• Connections by Server</li> <li>• Duplex Compliance (All Servers)</li> <li>• Duplex Compliance by Customer</li> <li>• Duplex Compliance by Facility</li> </ul> <p>See also, "Network Reports" in the <i>SA Integration Guide</i></p>   |

Additional reporting for SA Client features is available in the HP Automation Insight (AI) product. For information about viewing, launching, and scheduling reports, and building custom reports, see the *HP Automation Insight User Guide*.

For specific information about HP Automation Insight reports and universes, see the solution pack user guides that are provided with each solution pack available for download on HPLN.

# User Permissions for Reports

Reports are controlled by the user's permissions. You can view all objects that you have read permissions for, and you can perform actions on objects that you have write permissions for.

To view or run a network report, SA/NA integration must be configured. See the *SA Integration Guide*.

To view or run a user and security report, system administrator permissions are required.

# Launching the Reports Feature

To launch the Reports feature, perform one of the following steps:

- From the **View** menu, select **Reports > Dashboard**.
- From the **View** menu, select **Reports > Reports**.
- From the navigation pane, select **Reports**.

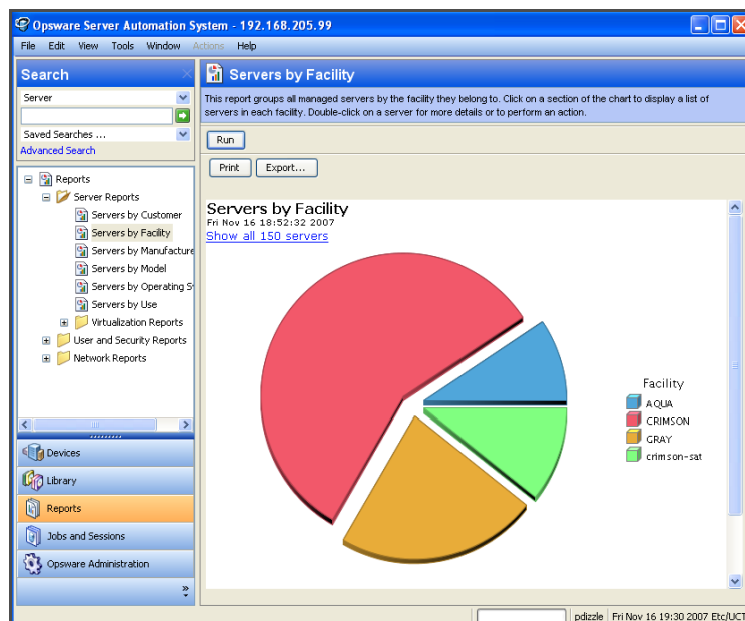
# Reports Display

In the SA Client reports window consists of a search pane, report parameters, report folders, and other filtering tools.

In this section:

- [Search Pane](#)
- [Report Folders](#)
- [Report Parameters](#)

figure 1 The Reports Feature Display



## Search Pane

All tab views have a search pane that allow you to search for information in the SA Client by selecting a component category and entering a keyword in the search text field. The results appear in a configurable list in the contents pane with an option to specify additional filter criteria. For more information, see the *SA Users Guide: Server Automation*

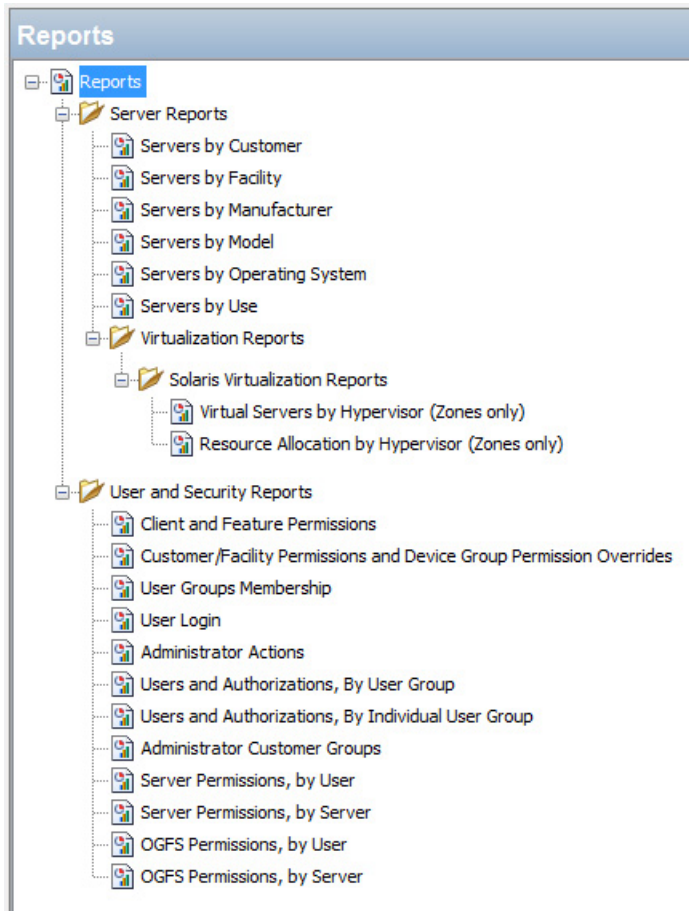
## Report Folders

Reports are organized into folders according to regulatory or IT best practice standards.

- **Server Reports:** This folder contains reports about servers by customer, facility, manufacturer, model, operating system, and server usage.
- **Virtualization Reports:** This subfolder contains reports about virtual servers and resource allocation by technology and by hypervisor.
- **Network Reports:** This folder contains reports about connections and duplex compliance for network devices and servers. You must have NA installed to see this folder.
- **User and Security Reports:** This folder contains reports about client and feature permissions; customer, facility, and device group permissions; and user group memberships. You must have system administrator permissions to see this folder.

The following figure illustrates how the Report folders appear in the navigation pane, including the reports listed in each folder.

figure 2 Report Folders



## Report Parameters

Many reports require input parameters in order to be run. For these reports, you can run the report with its default parameter values or modify the parameter values. If you want to run a report that includes or excludes certain servers, customers, or hardware models, you need to specify this criteria in the report parameters. See [Running a Report](#) on page 15.

# Running and Modifying Reports

In this section:

- [Running a Report](#)
- [Modifying Report Parameters](#)

## Running a Report

To run a report, perform the following steps:

- 1 From the navigation pane, select **Reports**.
- 2 Expand the Reports folder and then expand the Server Reports and Virtualization Reports.
- 3 Select one of the virtualization report listed in the folder.
- 4 If there are no report parameters in the Content pane, click **Run**.
- 5 If there are report parameters in the Content pane, you can either use the default parameters or change them:
  - To use the default report parameters, click **Run** to run the report. The report results appear in the contents pane. See [Report Results](#) on page 16.
  - To change the report parameters, see [Modifying Report Parameters](#) on page 15.

## Modifying Report Parameters

You can modify the default parameters and run a report that includes certain servers, customers, or hardware models.

To modify the default parameters:

- 1 In the drop-down list for (the Server, Customer, Model, and so on), select Contains, Equals, Begins With, or Ends With.
- 2 (Optional) Select the ellipsis button to open the Select Values window.
- 3 In the Select Values window, select a value in the Available or Selected pane and then use the directional buttons to include it in or exclude it from your search criteria.
- 4 Click **OK** to save your changes.
- 5 Click **Run** to run the report. The report results appear in the contents pane. See [Report Results](#) on page 16.



If data cannot be found to run the report, a “No records to display!” error displays. See also [Report Results Restrictions](#) on page 18.

# Report Results

Report results initially appear in a graphical or list view. The graphical report is an overview of available data for this report displayed in a pie chart or in a bar graph. You can drill down for more detail in the chart or graph by clicking on any of the sections or bars. For example, you can drill down to individual servers that appear in a report and get detailed information about them.

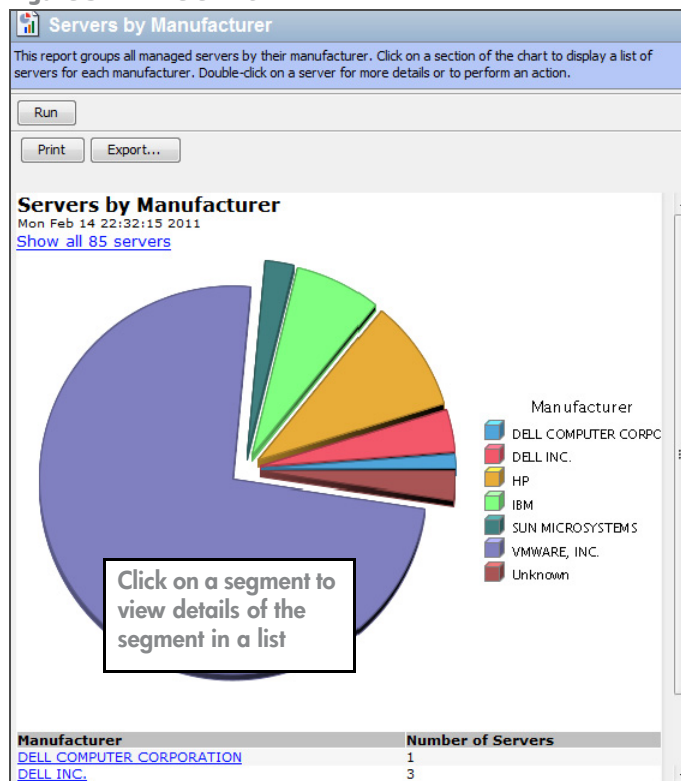
In this section:

- [Viewing a Graphical Report](#)
- [Viewing a List Report](#)
- [Exporting a Report](#)
- [Printing a Report](#)
- [Report Results Restrictions](#)

## Viewing a Graphical Report

A graphical report is a pie chart.

figure 3 Pie Chart



Click on a section of the chart to drill down for more details or to perform an action. You can also click on the “Show all <number> servers” link to display a list of servers.



## Viewing a List Report

A list report is a tabular display of information. Double-click on a row in the list, such as a server, audit, or policy, for more detail or to perform an action. See [Figure 4](#) for an example.

figure 4 List Report

**Users and Authorizations, By Individual User Group**  
 This report lists all Users and Authorizations to servers of each Individual User Group. Every user in SAS is a member of their own individual user group, whereby they are the only member. For each of these Individual user groups, a listing of all Server-Level and System-Level Features is provided.

Please select an Individual User Group  
 Individual User Group:

**Users and Authorizations, By Individual User Group**  
 User Groups whose name contains 'a'  
 08/10/10 11:45:09 PM

**SUMMARY TABLE**  
 Total Individual User Groups: 1

| Individual User Group | # of Server-Level Features | # of System-Level Features |
|-----------------------|----------------------------|----------------------------|
| treadmill             | 0                          | 7                          |

**DETAILED TABLE**  
 Individual User Group: treadmill  
 Total Group Admins: 3 Total Customers: 1 Total Facilities: 0 Total Device Groups: 0 Total Server-Level Features: 0 Total System-Level Features: 7

| Administrators          | Customers                           | Facilities | Device Groups | Server-Level Features | System-Level Features                      |
|-------------------------|-------------------------------------|------------|---------------|-----------------------|--|
| admin (Super Admin)     | Customer Independent (Read & Write) |            |               |                       | Allow Control of Super User Server Scripts |
| tester (Super Admin)    |                                     |            |               |                       | Manage Server Scripts (create)             |
| treadmill (Super Admin) |                                     |            |               |                       | Manage Server Scripts (read)               |
|                         |                                     |            |               |                       | Manage Server Scripts (remove)             |
|                         |                                     |            |               |                       | Manage Server Scripts (write)              |
|                         |                                     |            |               |                       | Run Ad-hoc Scripts                         |
|                         |                                     |            |               |                       | Run AdHoc & Source Visible                 |
|                         |                                     |            |               |                       | Server Scripts As Super User               |

## Exporting a Report

You can export a report to your local file system for use in other applications or to distribute as an attachment in an email. The type of report determines which export file formats are available:

- Graphical reports (pie or bar charts) can be exported to .html or .pdf format.
- List reports can be exported to .html, .pdf, or .xls format.



When you export a report in the SA Client, the time that you will see marked on the exported report will be the time when the report was exported, not the time when the report was generated.

To export a report:

- 1 From the report, click **Export** to open the Save window.
- 2 In the Save in field, enter a location that identifies where you want to save the file to, or select from the drop-down list.
- 3 Enter a file name.
- 4 Select the file type.
- 5 Click **Save**.

## Printing a Report

To print a report:

- 1 From the report, click **Print** to open the Print window.
- 2 Use the default print options or modify them, and then click **OK**.

## Report Results Restrictions

The following reports have a limit of 2000 “items” that can be displayed in their results:

- Server Permissions By Server
- Server Permissions By User
- OGFS Permissions By Server
- OGFS Permissions By User

In these reports, if the results reach 2000, the report will stop, because depending on the specified search parameters, they can yield thousands of results and slow performance of the SA core.

For example, the Server Report by User will run successfully if you specify 10 users and 200 servers in the search parameters, but will not run if you specify 10 users and 201 servers.

To avoid this problem, either modify your search parameters to yield less results, or break the report query into smaller searches and run as many smaller reports as you need to achieve your results.