



Hewlett Packard
Enterprise

ITBA Virtual Appliance

Software Version: 2016.07
Linux[®] operating system

Installation Guide

Document Release Date: July 2016
Software Release Date: July 2016

Legal Notices

Warranty

The only warranties for Hewlett Packard Enterprise products and services are set forth in the express warranty statements accompanying such products and services. Nothing herein should be construed as constituting an additional warranty. Hewlett Packard Enterprise shall not be liable for technical or editorial errors or omissions contained herein.

The information contained herein is subject to change without notice.

Restricted Rights Legend

Confidential computer software. Valid license from Hewlett Packard Enterprise required for possession, use or copying. Consistent with FAR 12.211 and 12.212, Commercial Computer Software, Computer Software Documentation, and Technical Data for Commercial Items are licensed to the U.S. Government under vendor's standard commercial license.

Copyright Notice

© 2016 Hewlett Packard Enterprise Development LP

Trademark Notices

Adobe™ is a trademark of Adobe Systems Incorporated.

Microsoft® and Windows® are U.S. registered trademarks of Microsoft Corporation.

UNIX® is a registered trademark of The Open Group.

This product includes an interface of the 'zlib' general purpose compression library, which is Copyright © 1995-2002 Jean-loup Gailly and Mark Adler.

Documentation Updates

The title page of this document contains the following identifying information:

- Software Version number, which indicates the software version.
- Document Release Date, which changes each time the document is updated.
- Software Release Date, which indicates the release date of this version of the software.

To check for recent updates or to verify that you are using the most recent edition of a document, go to: <https://softwaresupport.hp.com/>.

This site requires that you register for an HP Passport and to sign in. To register for an HP Passport ID, click **Register** on the HP Software Support site or click **Create an Account** on the HP Passport login page.

You will also receive updated or new editions if you subscribe to the appropriate product support service. Contact your HPE sales representative for details.

Support

Visit the HP Software Support site at: <https://softwaresupport.hp.com>.

This website provides contact information and details about the products, services, and support that HP Software offers.

HP Software online support provides customer self-solve capabilities. It provides a fast and efficient way to access interactive technical support tools needed to manage your business. As a valued support customer, you can benefit by using the support website to:

- Search for knowledge documents of interest
- Submit and track support cases and enhancement requests
- Download software patches
- Manage support contracts
- Look up HP support contacts
- Review information about available services
- Enter into discussions with other software customers
- Research and register for software training

Most of the support areas require that you register as an HP Passport user and to sign in. Many also require a support contract. To register for an HP Passport ID, click **Register** on the HP Support site or click **Create an Account** on the HP Passport login page.

To find more information about access levels, go to: <https://softwaresupport.hp.com/web/softwaresupport/access-levels>.

HP Software Solutions Now accesses the HPSW Solution and Integration Portal website. This site enables you to explore HP Product Solutions to meet your business needs, includes a full list of Integrations between HP Products, as well as a listing of ITIL Processes. The URL for this website is <http://h20230.www2.hp.com/sc/solutions/index.jsp>.

Contents

About the ITBA Virtual Appliance	4
Products	5
System Requirements	6
Configuration	7
Settings	8
Login Credentials	9
ITBA Virtual Appliance Installation Instructions	10
Deploy the ITBA Virtual Appliance	10
Reconfigure the ITBA Virtual Appliance	10
Log on to the ITBA Virtual Appliance Admin Portal	13
Log on to the BOE Admin Portal	14
Launch an ITBA Virtual Appliance Page with CSA Sample Data	15
Integrate the ITBA Virtual Appliance with CSA 4.x Instance and Generate KPIs Using Live Data	24
Configure CSA SSL Certificate	24
Create Data Source for CSA 4.x	25
Create Data Source for Amazon EC2 (Optional)	27
Execute ETL process	35
Activate CSA Live CAP	36
Launch pages with CSA KPIs	37
Launch ITBA Virtual Appliance Pages from the CSA Management Console	38
Hide UNKNOWN and INVALID Columns	39
Troubleshooting	40
Unable to log on to BOE	40
CSA-Billing Statement is empty	41
Postgres service fails to start	43
License has expired	44
Appendix A: Start the Vertica Database on the ITBA Virtual Appliance	45
Appendix B: Start ITBA Virtual Appliance Services	47
Appendix C: CentOS and open-vmtool Licenses	47
Send documentation feedback	48

About the ITBA Virtual Appliance

Managers need better insights into how their groups are performing and a way to convey the value they provide. Manual methods are too slow and lack governance so the open analytics platform HP IT Business Analytics behind the ITBA Virtual Appliance application provides the following:

- Best practice Dashboards, Scorecards, Objectives and Key Performance Indicators (KPIs) that can be tailored as needed.
- Automated data gathering through a comprehensive and growing library of integrations.
- A rapid start to providing management insights that avoids the overhead of typical BI solutions.
- Easy access by web or mobile with cascading Dashboards that meet the needs of different personas.
- Solves the hardest area of management reporting (IT) and expands to other performance management areas.

You can get related information at hpln.hpe.com/group/it-business-analytics.

Products

System	Version	Reference
HP IT Business Analytics	10.10	
Vertica	7.1.2-4	
Postgres	9.4.4	
SAP® BusinessObjects BI Platform	4.1SP3	
Content Package	10.10 (default)	

System Requirements

Server	Configuration	Minimum
ITBA Virtual Appliance Server	RAM	16 GB
	Free disk space	160GB
	Required ports	ports: 10001 to 10010, 11020, 11021, 5432 HTTP default port: 2024. You can select non-default. HTTP and HTTPS ports during post install. HTTPS default port: 8443. You can select non-default. HTTP and HTTPS ports during post-install.
Vertica DB server	RAM	16 GB
	Free disk space	160GB
	Required ports	Database default port: 5433
SAP® BusinessObjects Enterprise server	RAM	16 GB
	Free disk space	160GB
	Required ports	Port for the Central Management Console (CMC): 8080 Ports for the Central Management System (CMS): 6400 and 6410

Configuration

The ITBA Virtual Appliance configuration should use three servers as follows:



Settings

Category	Item	Value
Vertica DB settings	Vertica database port	5433
	Source Staging Scheme name	dws
	Target Staging Scheme name	dwst
	Target Scheme name	dwt
	Application scheme name	BA
	Result scheme name	dbo
	Extension scheme name	ext
ITBA Virtual Appliance settings	Installation Directory	/home/hpba/HPBA-340-340-master-redhat-x64
	Time Zone	Asia/Shanghai
	Application http port	2024
	Application https port	8443
	Currency	USD - US Dollar
	Glassfish admin user	admin
	Glassfish admin password	Admin111
	First fiscal month of the year	January
	First day of week	MONDAY

Login Credentials

Vertica server OS	User name: root Password: Solutions@2016
	User name: bavertica Password: Solutions@2016
BO server OS	User name: root Password: Solutions@2016
	User name: boadmin Password: Solutions@2016
ITBA Virtual Appliance server OS	User name: root Password: Solutions@2016
	User name: hpba Password: Solutions@2016
ITBA Virtual Appliance application	User name: Administrator Password: Admin111
Vertica DB	User name: bavertica Password: Solutions@2016
Vertica DB name	DB name: ba1010db Password : Solutions@2016
Postgres DB	DB name: xs_mng User name: xsadmin Password: openview
BO application	User name: Administrator Password: Admin123

ITBA Virtual Appliance Installation Instructions

This section provides the installation instructions for the ITBA Virtual Appliance as part of the Cloud Orchestration Suite.

Deploy the ITBA Virtual Appliance

After downloading the OVF file, import the OVF file into vCenter using the vSphere client. To create instances of ITBA Virtual Appliance, complete the following steps:

Note: You must repeat these steps on each one of the three VA machines.

1. Log on to the vSphere client as an administrator.
2. Click **File > Deploy OVF template**.
3. Browse to select the OVF file in the directory to which you extracted the distribution file.
4. Follow the instructions in the **Deploy OVF Template** wizard to complete the deployment.
5. Power on the ITBA Virtual Appliance virtual machine, after completion of the OVF file import.

Reconfigure the ITBA Virtual Appliance

1. **Update the IP and FQDN for servers.**

Logon to **itba.lab.com** using the user name **root** and password **Solutions@2016**.

- a. Open the folder using the following command:

```
cd /home/hpba/HPBA-10.10.340-340-master-redhat-x64/Tools/autoconfig/
```

- b. Input and save the new IP and new FQDN for BOE server and Vertica server using the following command:

```
vim conf.sh
```

```
export ITBA_Install_User=hpba
export BA_FQDN=itba.lab.com

export BOE_FQDN=itbabo.lab.com
export BOE_IP=16.155.197.120

export Vertica_FQDN=itbavertica.lab.com
export Vertica_IP=16.155.197.113
```

- c. Run the following command:

./RemoteChange.sh

using the relevant passwords:

- For root: **Solutions@2016**
- For boadmin: **Solutions@2016**

2. Update the BO web services URL.

Note: If FQDN was not changed, ignore this step.

Log on to CMC using **http://<new ip>8080/BOE/CMC/** with user name: **Administrator**, password: **Admin123**.

- a. Log on to Central Management Console (CMC) as a user who has administrator rights over Applications.
- b. Navigate to **Applications** in CMC.
- c. Double-click **Web Service** or right-click **Web Service** and select **Properties**.
- d. Update **Access URL**: if it needs to be changed as a result of a hostname change.
- e. Double-click **RESTful Web Service** or right-click **Web Service** and select **Properties**.
- f. Update **Access URL**: if it needs to be changed as a result of a hostname change.
- g. Go back to the **Applications** page in CMC and update the hostname for **Processing Settings** under **Central Management Console**.
- h. Reboot the BO virtual machine.

Note: Make sure BO services are started by logging on to **http://<new ip>8080/BOE/CMC/**.

3. Integrate the ITBA Virtual Appliance, BO, and Vertica servers.

Log on to **itba.lab.com** with user name: **root** and password: **Solutions@2016**.

- a. Open the relevant folder using the following command:

```
cd /home/hpba/HPBA-10.10.340-340-master_redhat-xs64/Tools/autoconfig/
```

- b. Run the following command:

```
./start.sh
```

4. Relink ITBA with BOE server.

Note: If FQDN was not changed, ignore this section.

- a. Get the BOE trusted principal:
- Log into the BOE application.
 - Open Chrome/IE browser, input the URL **https://[ITBAServer]:8080/BOE/CMC/**
 - Go to the **Authentication > Enterprise**.

Central Management Console

Enterprise

☒ Password Restrictions
☒ Enforce mixed-case passwords
☒ Must contain at least N characters:

User Restrictions
☐ Must change password every N day(s):
☒ Cannot reuse the N most recent password(s):
☒ Must wait N minute(s) to change password:

Logon Restrictions
☐ Disable account after N failed attempts to log on:
 Reset failed logon count after N minute(s):
☐ Re-enable account after N minute(s):

Synchronize Data Source Credentials with Log On
☐ Enable and update user's Data Source Credentials at logon time

Trusted Authentication
☒ Trusted Authentication is enabled
 Shared secret is unchanged.

Shared Secret validity Period (days):

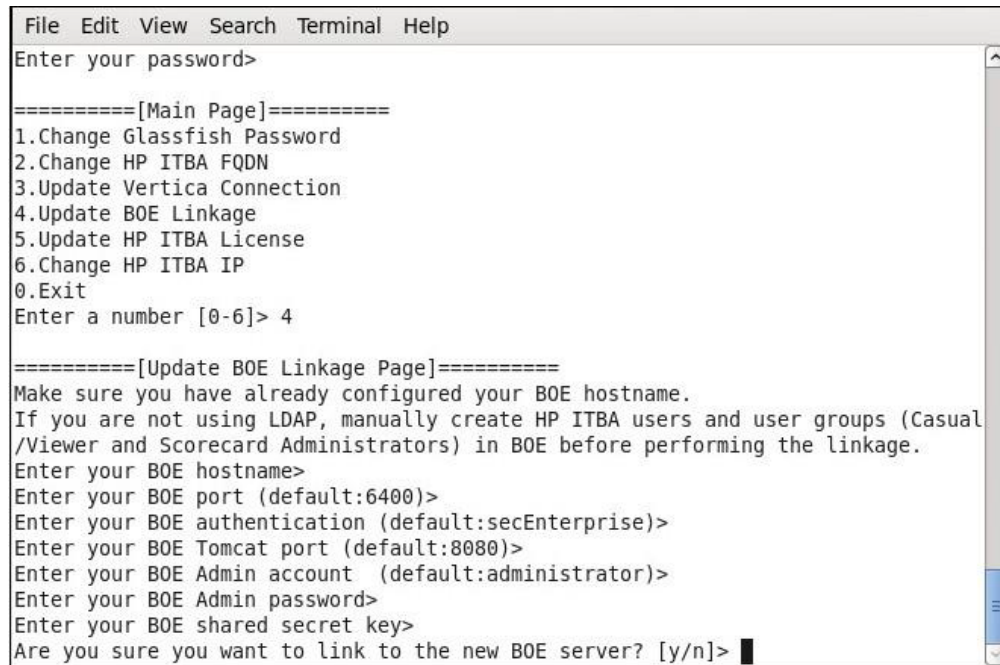
Trusted logon request is timeout after N millisecond(s) (0 means no limit):

- Select **Trusted Authentication is enabled**.
- Click **New Shared Secret**.
- Click the **Update** button.

- vii. Reopen Enterprise.
- viii. Click **Download Shared Secret**.
- b. Link ITBA to the BOE server after Installation:

You can update the BOE linkage using the Maintenance Tool.

- i. Make sure you check out the step detailed in the Maintenance Tool.
- ii. Open a Unix console (bash) and go to the following **<HP-BA>/Tools/** directory and input command **./maintenanceTool.sh** to start the ITBA Maintenance Tool.
- iii. Enter 4 in **Enter a number (0-6)** to create the BOE linkage. Enter the required additional BOE information.



```
File Edit View Search Terminal Help
Enter your password>

=====[Main Page]=====
1.Change Glassfish Password
2.Change HP ITBA FQDN
3.Update Vertica Connection
4.Update BOE Linkage
5.Update HP ITBA License
6.Change HP ITBA IP
0.Exit
Enter a number [0-6]> 4

=====[Update BOE Linkage Page]=====
Make sure you have already configured your BOE hostname.
If you are not using LDAP, manually create HP ITBA users and user groups (Casual
/Viewer and Scorecard Administrators) in BOE before performing the linkage.
Enter your BOE hostname>
Enter your BOE port (default:6400)>
Enter your BOE authentication (default:secEnterprise)>
Enter your BOE Tomcat port (default:8080)>
Enter your BOE Admin account (default:administrator)>
Enter your BOE Admin password>
Enter your BOE shared secret key>
Are you sure you want to link to the new BOE server? [y/n]> █
```

- iv. Once the link is successful, you must manually create ITBA users in BOE.

Log on to the ITBA Virtual Appliance Admin Portal

1. Open the following URL:

<https://itba.lab.com:8443/ba>

Note: You may need to add an entry (with the ITBA Virtual Appliance server IP Address and

hostname) to the hosts file on your computer to resolve DNS issues.

For example: Add the following entry to your hosts file:

<ITBA_ipAddress> itbabo.lab.com itbabo

2. Log on to the ITBA Virtual Appliance Admin Portal using the following credentials:

User ID: **Administrator**

Password: **Admin111**

Note: Ignore the warning messages related to 'Java Plugin'. Allow all plugins to run on localhost and hpba.lab.com.

Log on to the BOE Admin Portal

1. Open the following URL:

<http://itbabo.lab.com:8080/BOE/CMC/>

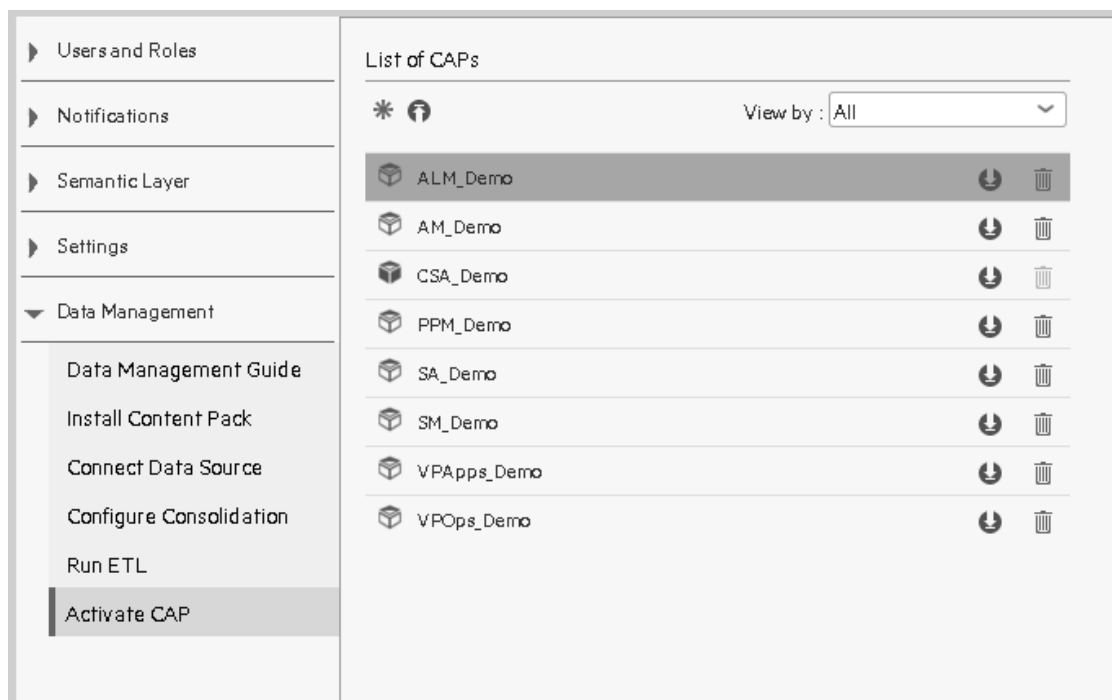
2. Log on to the BOE Admin Portal using the following credentials:

User ID: **Administrator**

Password: **Admin111**

Launch an ITBA Virtual Appliance Page with CSA Sample Data

1. Log on to the ITBA Virtual Appliance Admin portal. For details, see ["Log on to the ITBA Virtual Appliance Admin Portal" on page 13.](#)
2. Click **ADMIN > Data Management > Activate CAP.**

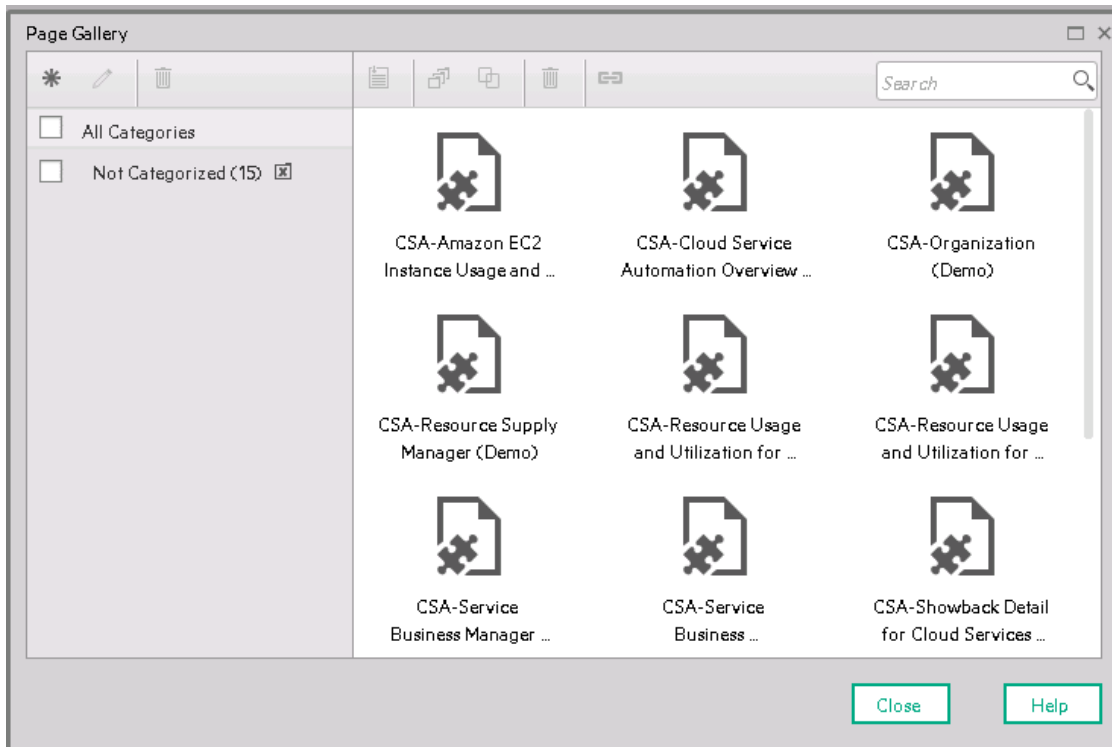


3. Select **CSA_Demo CAP** and click **Activate** to activate the Content Acceleration Pack.

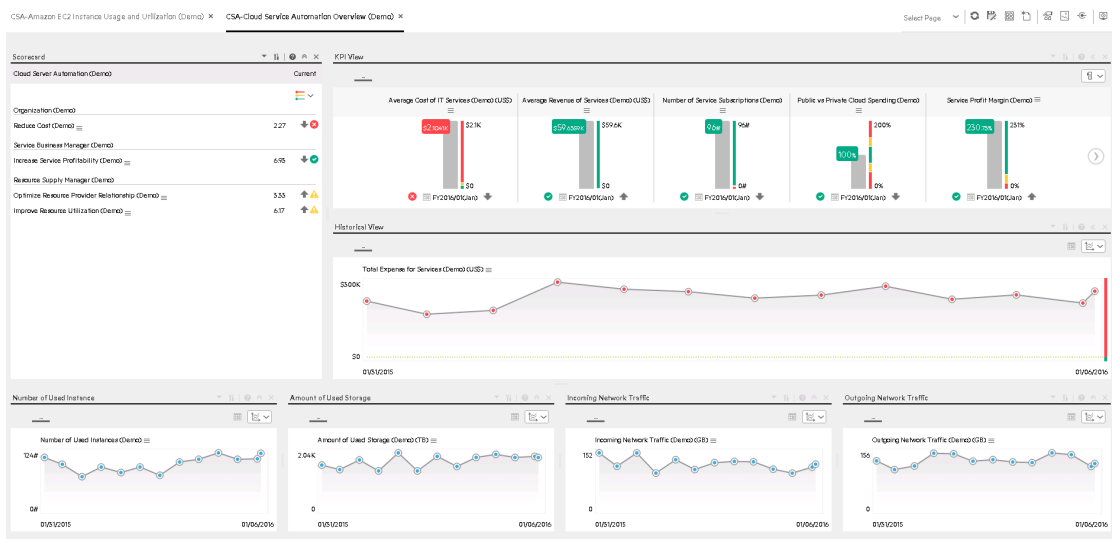
Note: Ignore the two previous steps if CSA_Demo is already activated.

4. Wait until a CAP activation successful message is displayed.
5. Close the ADMIN tab to open the Dashboard and click **Select page.**

6. In the Page Gallery, select the **Not Categorized** category, and then double-click the relevant CSA related pages.



The CSA-Cloud Service Automation Overview Page:



The CSA-Azure VM Instance Usage and Utilization (Demo) Page:

Amazon EC2 Instance

Period	2013-11-05 to 2017-11-16							
Total Instance(#)	2	Total Instance Cost(\$)			389.28			
Date : 2015-10-16		SubTotal for Date : 27.2						
Instance ID	Instance Type	Consumption			Utilization			Total Cost(\$)
		Compute (Hours)	Storage (GB)	Networking (GB)	Avg CPU(%)	Min CPU(%)	Max CPU(%)	
ITBA2a8bd08ce	t2.micro	24	20	0.2	65.41	11.21	83.11	12.52
Wendy-Windows2008	t2.small	24	30	0.51	55.26	36.19	92.7	14.68
Date : 2015-10-17		SubTotal for Date : 27.2						
Instance ID	Instance Type	Consumption			Utilization			Total Cost(\$)
		Compute (Hours)	Storage (GB)	Networking (GB)	Avg CPU(%)	Min CPU(%)	Max CPU(%)	
ITBA2a8bd08ce	t2.micro	24	20	0.2	50.49	25.99	86.55	12.52
Wendy-Windows2008	t2.small	24	30	0.51	66.19	36.71	94.57	14.68
Date : 2015-10-18		SubTotal for Date : 27.2						
Instance ID	Instance Type	Consumption			Utilization			Total Cost(\$)
		Compute (Hours)	Storage (GB)	Networking (GB)	Avg CPU(%)	Min CPU(%)	Max CPU(%)	
ITBA2a8bd08ce	t2.micro	24	20	0.2	56.3	36.02	80.8	12.52
Wendy-Windows2008	t2.small	24	30	0.51	64.91	36.13	76.1	14.68

The CSA-Resource Usage and Utilization for Consumer (Demo) Page:

CSA-Amazon EC2 Instance Usage and Utilization (Demo) x CSA-Azure VM Instance Usage and Utilization (Demo) x CSA-Organization (Demo) x CSA-Resource Supply Manager (Demo) x CSA-Resource Usage and Utilization for Consumer (Demo) x Select Page x

Web Intelligence Report Viewer

Document Summary

Resource Usage and Utilization for Consumer (Demo)

Type: Web Intelligence document
Author: Administrator
Creation date: November 6, 2015 12:54:16 PM
Locale: English (United States)
Keywords:

Statistics

Last refresh date: January 6, 2016 11:39 AM
Last modified: November 11, 2015 11:01 AM
Last modified by: Administrator
Duration of previous refresh: 1
Refresh on open: On
Permanent regional formatting: Off
Use query dial: Off
Disable query caching: Off
Hide warning icons: Off
Merge prompts (QV3 enabled): On
Data Tracking: Off
Auto-merge dimension: Off
Extend merged dimension values: Off
Parameters: Prompts

Resource Usage and Utilization

Period	2010-01-01 to 2020-01-01	User	ALL
Organization	ALL	Total Machine(#)	10

Date : 2015-10-16

Org : Consumer

Person : consumer

Private Cloud

Subscription	Resource Provider	Virtual Machine	Allocation	Consumption	Avg Utilization						
			CPU(%)	Memory(GB)	Network(GB)	Min	Max	Avg			
Linux/VM	VCenter	Linux/VM0201	2	4	39.09	0.94	1.88	16.42	68.82	49.37	100

Public Cloud

Subscription	Resource Provider	Virtual Machine	VM Type	Consumption	CPU Utilization(%)				
				Compute(hours)	Storage(GB)	Networking(GB)	Min	Max	Avg
AWS_EZE_1.0.0	Amazon	Wendy-Windows2008	t2.small	24	0	0.51	36.19	92.7	55.26
AWS_EZE_Keep_1.0.0	Amazon	ITBA2a8bd08ce	t2.micro	24	0	0.2	11.21	83.11	65.41
VULIna_sub	Azure	ITBADEV001	small	9.88	0	0	31.33	97.83	54

The CSA-Resource Usage and Utilization for Resource Supplier Manager (Demo) Page:

Web Intelligence Report Viewer

Document Summary

Resource Usage and Utilization for Resource Supplier Manager Demo

Type: Web Intelligence document
Author: Administrator
Creation date: November 6, 2015 12:56:58 PM
Locale: English (United States)
Description:

Keywords:

Statistics

Last refresh date: January 6, 2016 11:41 GMT+05:30
Last modified: November 11, 2015 12:01 GMT+05:30
Last modified by: Administrator
Duration of previous refresh: 1
Document Options
Refresh on open: On
Permanent regional Off
Formatting
Use query drill: Off
Enable query grouping: Off
Hide warning icon: Off
Merge prompts (B2's variables): On
Data Options
Data Tracking: Off
Auto-merge: Off
Extended merged dimension values: Off
Parameters
Prompts

Resource Usage and Utilization

Period	2010-01-01 to 2020-01-01	Total Machine Cost(\$)	5,632.75
Organization	ALL	Total Machine(#)	10
Date : 2015-10-16		SubTotal for Date :	159.82
Org : Consumer		SubTotal for Org :	159.82
Person : consumer		SubTotal for Person :	159.82
Private Cloud		SubTotal for Private Cloud :	75.4
Public Cloud		SubTotal for Public Cloud :	84.42

Resource Provider	Virtual Machine	Allocation	Consumption	Avg Utilization	Total Cost(\$)						
CPUS	Memory(GB)	Disk(GB)	MemCPU Days	CPUS	Mem	Disk					
VCenter	Linux/Win2008	2	4	30.09	0.84	1.88	16.42	89.82	49.37	190	75.4

Resource Provider	Virtual Machine	VM Type	Consumption	Utilization	Total Cost(\$)				
			Computed(hours)	Storage(GB)	Networking(GB)	Min CPU(%)	Max CPU(%)	Avg CPU(%)	
Amazon	ITBA3480D80ce	I2.micro	24	0	0.2	11.21	83.11	65.41	12.52
Amazon	Win2k/Windows2008	I2.small	24	0	0.51	36.19	82.7	55.26	14.68
Azure	ITBADEVMB1	small	9.88	0	0	31.33	97.83	54	57.22

The CSA-Showback Detail for Cloud Services (Demo) Page:

Web Intelligence Report Viewer

Document Summary

Showback Detail for Cloud Services Demo

Type: Web Intelligence document
Author: Administrator
Creation date: November 6, 2015 12:06:17 PM
Locale: English (United States)
Description:

Keywords:

Statistics

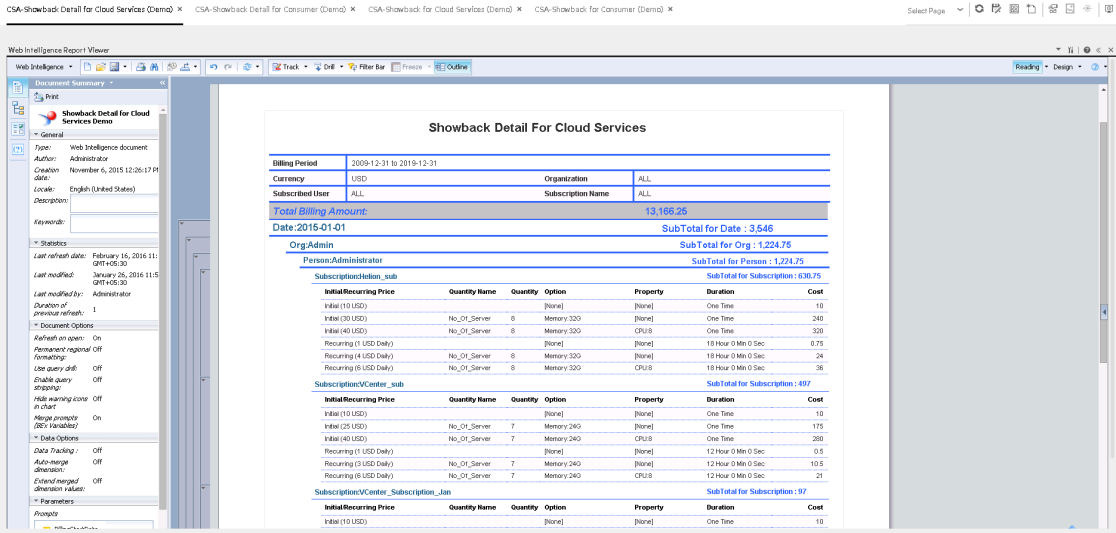
Last refresh date: February 16, 2016 11:41 GMT+05:30
Last modified: January 26, 2016 11:5 GMT+05:30
Last modified by: Administrator
Duration of previous refresh: 1
Document Options
Refresh on open: On
Permanent regional Off
Formatting
Use query drill: Off
Enable query grouping: Off
Hide warning icon: Off
Merge prompts (B2's variables): On
Data Options
Data Tracking: Off
Auto-merge: Off
Extended merged dimension values: Off
Parameters
Prompts

Showback Detail For Cloud Services

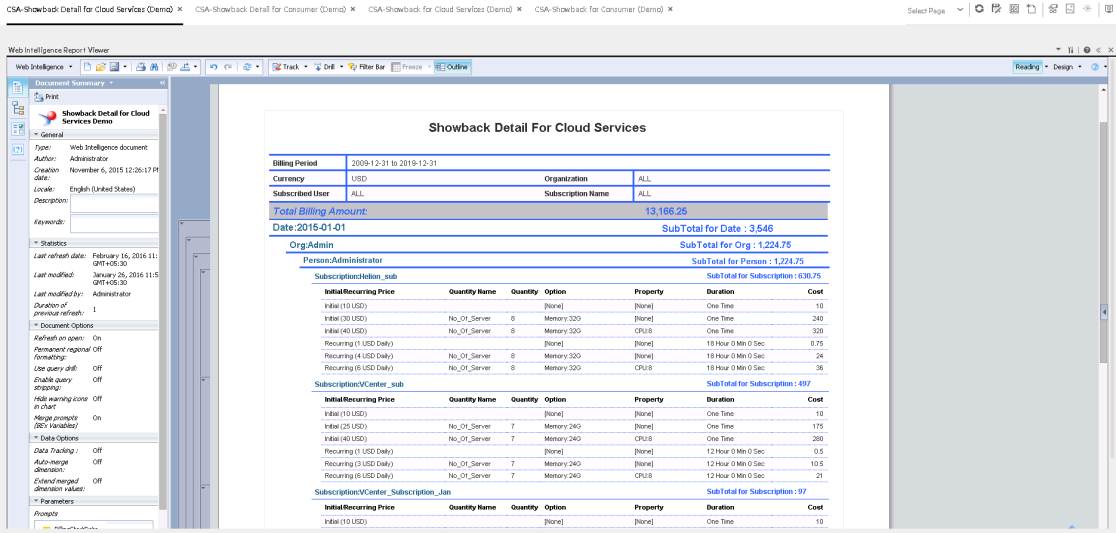
Billing Period	2009-12-31 to 2019-12-31	Organization	ALL
Currency	USD	Subscription Name	ALL
Subscriber User	ALL		
Total Billing Amount		SubTotal for Date :	13,166.26
Date: 2015-01-01		SubTotal for Org :	1,224.75
Org: Admin		SubTotal for Person :	1,224.75
Person: Administrator		SubTotal for Subscription :	630.75

Initial/Recurring Price	Quantity Name	Quantity	Option	Property	Duration	Cost
Initial (10 USD)	No_Ot_Server	0	Memory 320	[None]	One Time	10
Initial (20 USD)	No_Ot_Server	0	Memory 320	[None]	One Time	240
Initial (40 USD)	No_Ot_Server	0	Memory 320	CPU8	One Time	320
Recurring (1 USD Daily)	No_Ot_Server	6	Memory 320	[None]	10 Hour 0 Min 0 Sec	8.75
Recurring (4 USD Daily)	No_Ot_Server	6	Memory 320	CPU8	10 Hour 0 Min 0 Sec	24
Recurring (8 USD Daily)	No_Ot_Server	6	Memory 320	CPU8	10 Hour 0 Min 0 Sec	36
Subscriptions/Center_sub					SubTotal for Subscription :	497
Initial/Recurring Price	Quantity Name	Quantity	Option	Property	Duration	Cost
Initial (10 USD)	No_Ot_Server	0	Memory 240	[None]	One Time	10
Initial (20 USD)	No_Ot_Server	7	Memory 240	[None]	One Time	175
Initial (40 USD)	No_Ot_Server	7	Memory 240	CPU8	One Time	260
Recurring (1 USD Daily)	No_Ot_Server	7	Memory 240	[None]	12 Hour 0 Min 0 Sec	0.5
Recurring (3 USD Daily)	No_Ot_Server	7	Memory 240	[None]	12 Hour 0 Min 0 Sec	10.5
Recurring (6 USD Daily)	No_Ot_Server	7	Memory 240	CPU8	12 Hour 0 Min 0 Sec	21
Subscriptions/Center_Subscription_jan					SubTotal for Subscription :	97
Initial/Recurring Price	Quantity Name	Quantity	Option	Property	Duration	Cost
Initial (10 USD)	No_Ot_Server	0	Memory 240	[None]	One Time	10

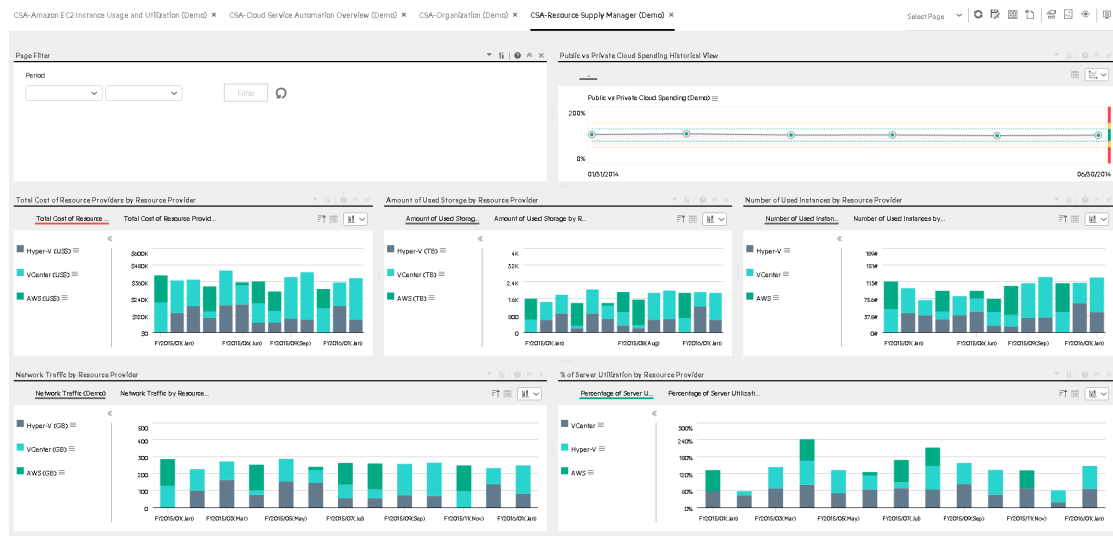
The CSA-Showback Detail for Consumer (Demo) Page:



The CSA-Showback for Cloud Services (Demo) Page:



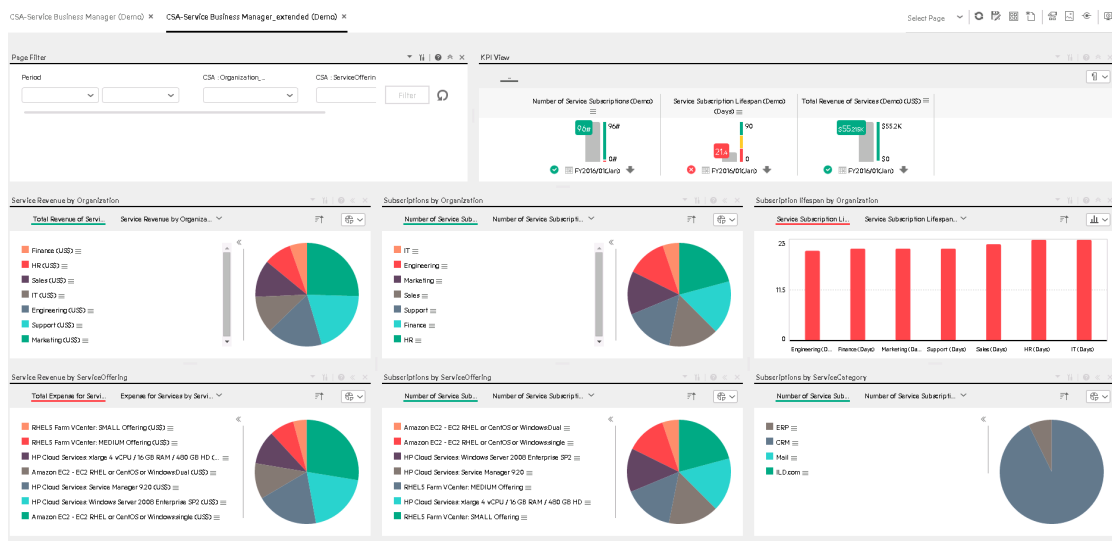
Page 20 of 49



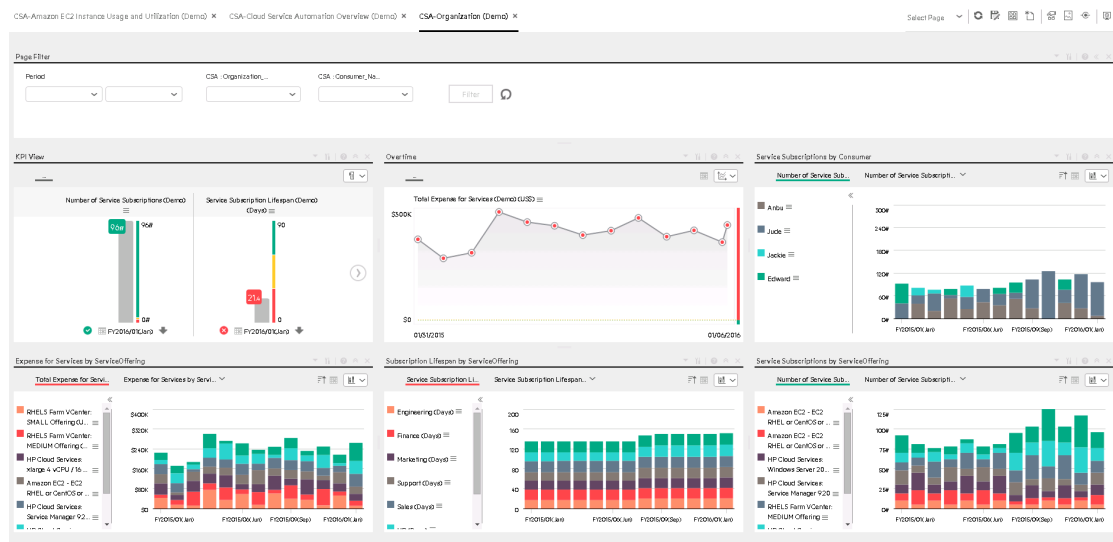
The CSA-Service Business Manager Page:



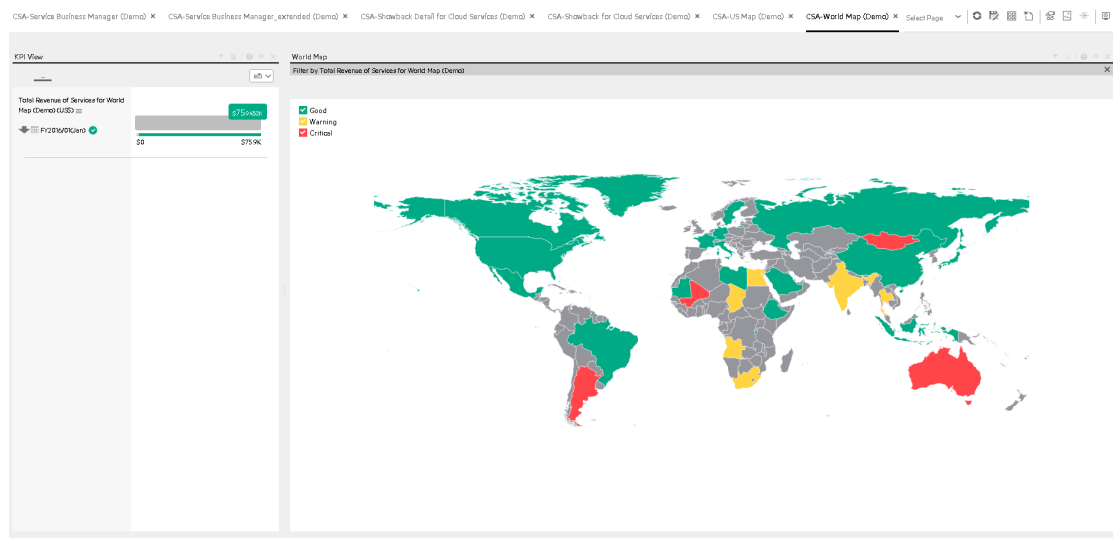
The CSA-Service Business Manager Extended Page:



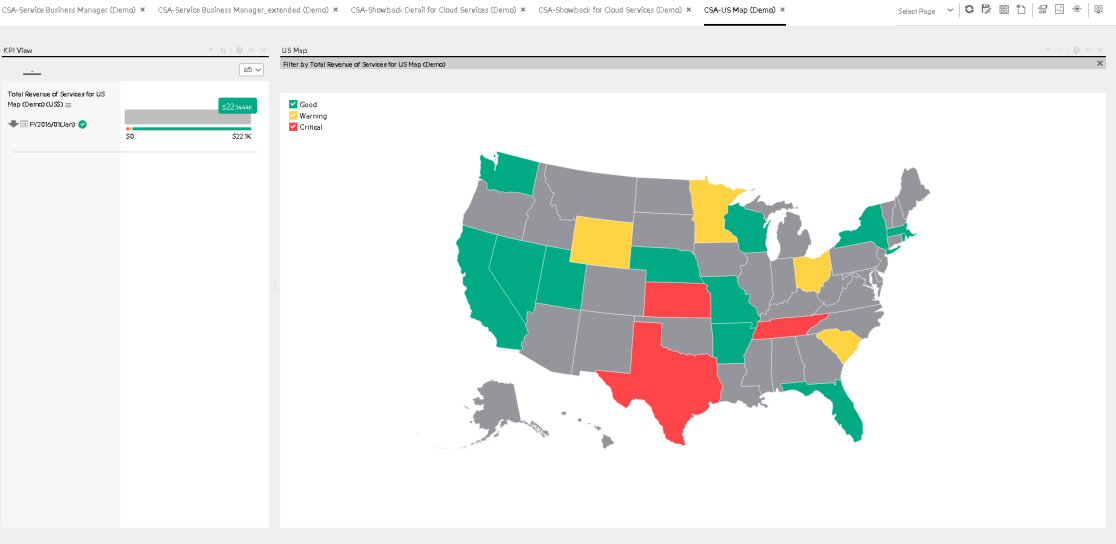
The CSA-Organization Page:



The CSA-World Map Page:



The CSA-US Map Page:



Integrate the ITBA Virtual Appliance with CSA 4.x Instance and Generate KPIs Using Live Data

Complete the following steps to integrate ITBA Virtual Appliance 2016.1 with CSA 4.x (with Amazon EC2 as resource provider).

Configure CSA SSL Certificate	24
Create Data Source for CSA 4.x	25
Create Data Source for Amazon EC2 (Optional)	27
Execute ETL process	35
Activate CSA Live CAP	36
Launch pages with CSA KPIs	37

Configure CSA SSL Certificate

To integrate a ITBA Virtual Appliance 2016.5 instance with a CSA4.x instance, complete the following steps:

1. Import the CSA SSL Certificate:

- a. Export the CSA SSL Certificate to a file.

On the CSA server, export the trusted SSL Certificate into the JDK key store using the **keytool.exe** tool provided by the JDK and run the following commands from the command prompt:

```
cd C:\Program Files\Hewlett-Packard\CSA\openjre\bin
```

```
keytool -export -alias csa -file "C:\csa-certificate.cer" -keystore "C:\Program  
Files\Hewlett-Packard\CSA\openjre\lib\security\cacerts" -storepass changeit
```

Note: You must change the CSA keystore directory path according to the CSA installation in your environment.

You must copy the exported CSA certificate to the ITBA Virtual Appliance before proceeding to the next step. Tools like WinSCP can be used to transfer the files from Windows to Linux.

- b. Reveal the CSA Certificate to the Data Warehouse:

Import the SSL Certificate trusted by the CSA server into the JDK keystore using the **keytool.exe** tool provided by the JDK as follows:

Log on to the ITBA Virtual Appliance as root and run the following commands

```
su hpba
```

```
cd $HPBA_HOME/jdk/jre/bin
```

```
keytool -importcert -alias <alias> -file <file> -keystore
```

```
../lib/security/cacerts -trustcacerts -storepass changeit
```

Replace <alias> and <file> with the relevant values.

Example: <alias> is csa and <file> is /tmp/csa-certificate.cer.

- c. Restart the ITBA Virtual Appliance service to activate the CSA Certificate by running the following command:

```
$HPBA_HOME/supervisor/bin/hpba-restart.sh
```

When the message **Do you wish to restart HPBA(yes/no)?** is displayed, select **Yes**, and then press the **Enter** key.

Create Data Source for CSA 4.x

1. Prerequisites:

- Make sure that you have imported the CSA SSL Certificate (for details, see ["Configure CSA SSL Certificate" on the previous page](#)).
- Make sure that you have few Active Subscriptions in CSA.

2. Create the CSA data source:

- a. Log on to the ITBA Virtual Appliance ADMIN portal. For details, see ["Log on to the ITBA Virtual Appliance Admin Portal" on page 13](#).
- b. Select **ADMIN > Data Management**.
- c. Click **Connect data source**.
- d. Click **Add data source**.
- e. The **Add Data Source** page opens. Select the **CSA** data source type.

- f. Select or enter the configuration parameters.
- g. Click **Next** to proceed to the validation page.

The following is an example of the CSA Activation page.

The screenshot shows a 'Data Source Wizard' window titled 'Data Source Wizard' with a 'Help' button in the top right corner. The window is divided into two main sections. The top section, titled 'CSA (Cloud Service Automation)', contains several configuration fields: '*Instance name' (text input), 'CSA Version' (dropdown menu showing '4.x'), 'Time Zone' (dropdown menu showing 'Asia/Shanghai'), and 'Data Source Type' (dropdown menu showing 'CSA'). The bottom section contains fields for '*Username' (text input with placeholder '<<Enter username>>'), '*Password' (text input), '*Hostname/IP Address' (text input with placeholder '<<Enter hostname or IP address>>'), '*Port' (text input showing '8444'), 'Proxy Host' (text input with placeholder '<<Enter proxyHost>>'), 'Proxy Port' (text input with placeholder '<<Enter proxyPort>>'), 'Proxy Username' (text input with placeholder '<<Enter proxyUsername>>'), and 'Proxy Password' (text input). At the bottom of the window, there is a grey informational box with text about currency conversion, and three buttons: 'Back', 'Next', and 'Cancel'.

Data Source Wizard Help x

CSA (Cloud Service Automation)

*Instance name :

CSA Version :

Time Zone :

Data Source Type :

*Username :

*Password :

*Hostname/IP Address :

*Port :

Proxy Host :

Proxy Port :

Proxy Username :

Proxy Password :

To help you convert the billing amount to different currencies, ITBA has pre-configured their default exchange rates for various currency. To change the default exchange rate of each currency, refer to the Content Reference Guide for details

Back Next Cancel

Note:

- If the CSA configuration is for a named instance connection, make sure to enter the named instance port.
- Ignore CSA version in the Data Source Wizard. You can use 3.1/3.2/4.x to connect to HP CSA 4.x

Create Data Source for Amazon EC2 (Optional)

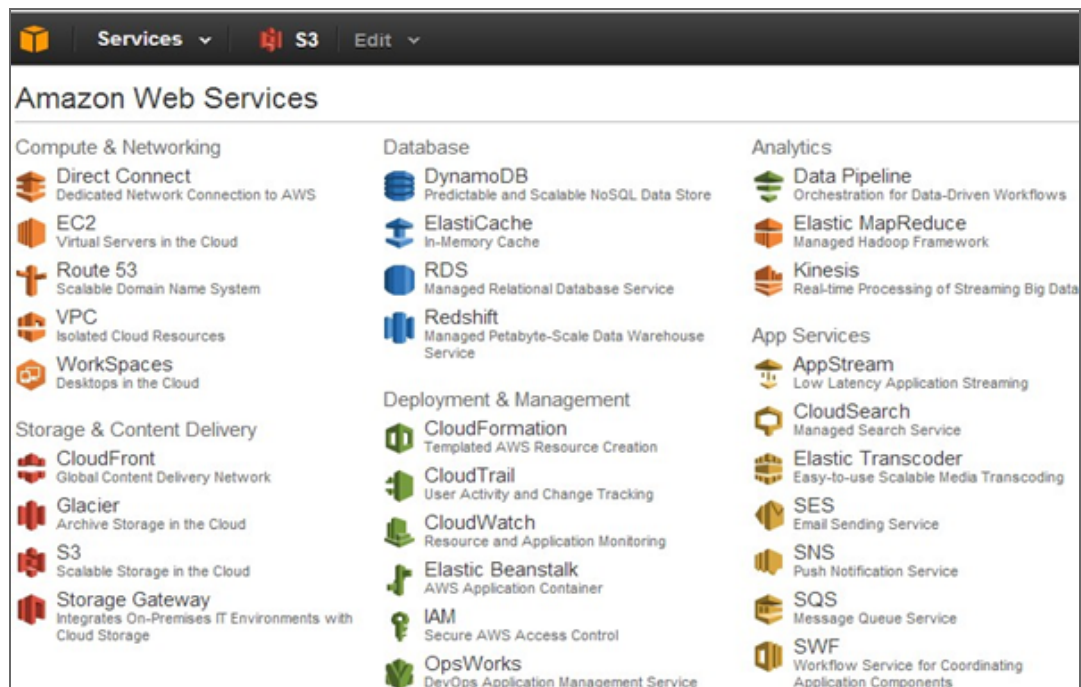
Prerequisite

Before you create the data source for Amazon EC2 you must create the relevant bucket in Amazon S3.

1. Create a bucket in Amazon S3.

Complete the following steps to create a bucket in Amazon S3:

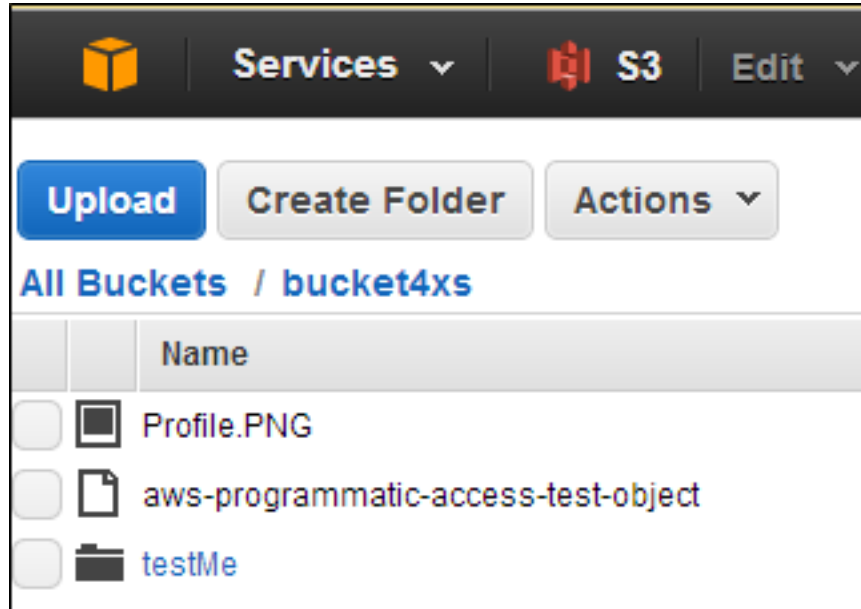
- Log on to Amazon console using a valid AWS account.
- Navigate to AWS Management console.



- Click **S3** under **Storage & Content Delivery**.

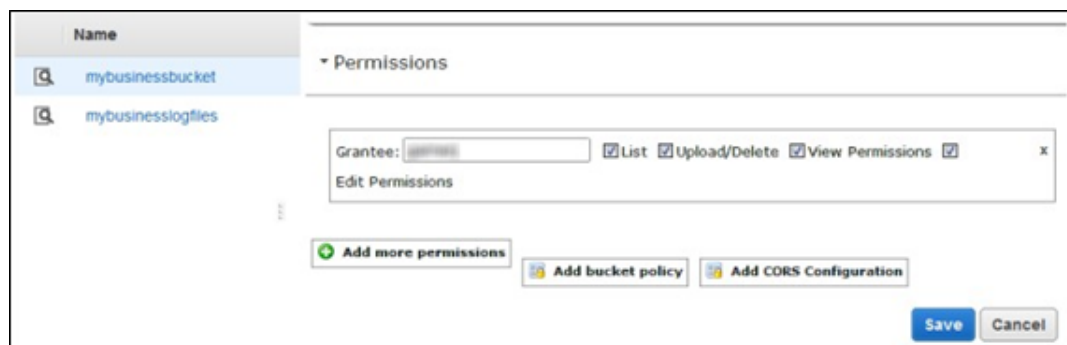
If buckets are not already created, create a new bucket.

- d. Click the bucket and click **Upload** to upload sample data file(s) to the bucket.

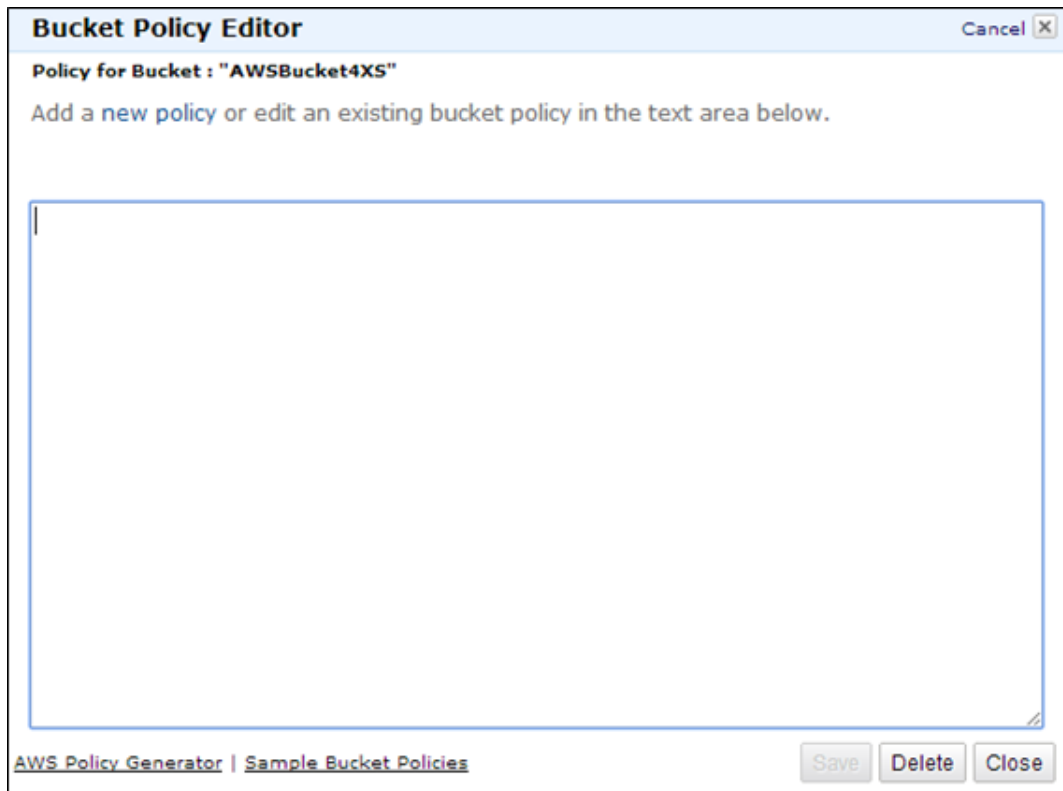


2. Add a policy to the created bucket.

- a. Log on to the AWS Management Console and open the Amazon S3 console.
- b. From the Buckets list, click the relevant bucket to view its properties.



- c. Click **Add bucket policy**.



Bucket Policy Editor Cancel X

Policy for Bucket : "AWSBucket4XS"

Add a new policy or edit an existing bucket policy in the text area below.

[AWS Policy Generator](#) | [Sample Bucket Policies](#) Save Delete Close

- d. In the Bucket Policy Editor, copy or paste the text below.

```
{
  "Id": "Policy_AWSBucket4XS", "Statement": [
    {
      "Sid": "Stmt_AWSBucket4XS01",
      "Effect": "Allow", "Principal": {
        "AWS": "*"
      },
      "Action": [
        "s3:GetBucketAcl", "s3:GetBucketPolicy"
      ],
      "Resource": "arn:aws:s3::: Your_Bucket_Name "
    },
    {
      "Sid": "Stmt_AWSBucket4XS02", "Effect": "Allow", "Principal": {
        "AWS": "*"
      },
      "Action": "s3:PutObject",
      "Resource": "arn:aws:s3::: Your_Bucket_Name /*"
    }
  ]
}
```

```
]
}
```

Note: Replace **Your_Bucket_Name** with the name of the bucket you have created and make sure there are no extra space around the bucket name in the policy file.

- e. Click **Save** to verify the policy content.
- f. Click **Save** to save the changes made to the bucket.

None Properties Transfers

Bucket: AWSBucket4XS

Bucket: AWSBucket4XS
Region: US Standard
Creation Date: Mon Apr 21 16:03:42 GMT+530 2014
Owner: Me

▼ Permissions

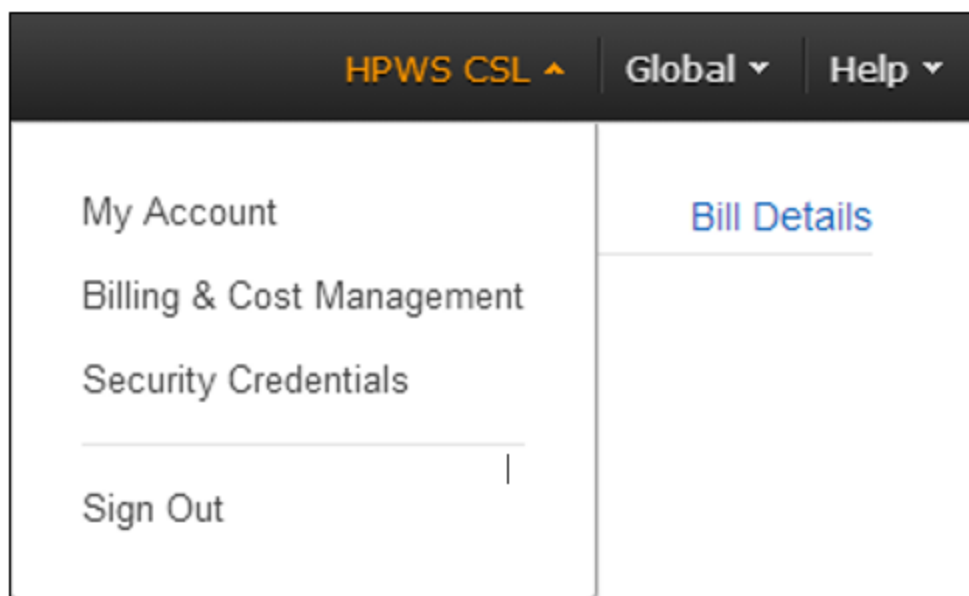
Grantee: ☒ List ☒ Upload/Delete ☒ View Permissions ☒ x

Edit Permissions

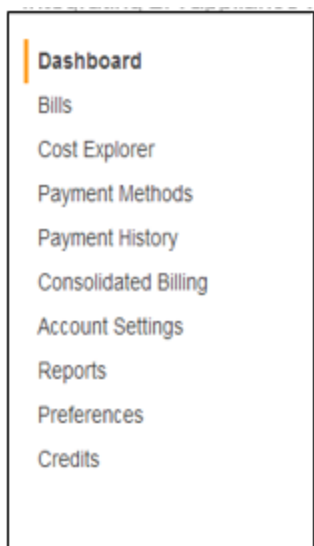
+ Add more permissions Edit bucket policy Add CORS Configuration

Save Cancel

3. Activate the billing reports services for the S3 bucket.
 - a. Click your account on the top-right corner of the AWS Console, and then click **Billing & Cost Management**.



- b. Select **Preferences** in the left side pane.



- c. Check **Receive Billing Reports** for the bucket that you have created in Amazon S3.
- d. Provide the name of the bucket in the **Save to S3 Bucket** box.

- e. Click **Verify** and ensure that it is validated.

Dashboard
Bills
Cost Explorer
Payment Methods
Payment History
Consolidated Billing
Account Settings
Reports
Preferences
Credits

Preferences

☒ **Receive PDF Invoice By Email**
Turn on this feature to receive a PDF version of your invoice by email. Invoices are generally available within the first three days of the month.

☒ **Receive Billing Alerts**
Turn on this feature to monitor your AWS usage charges and recurring fees automatically, making it easier to track and manage your spending on AWS. You can set up billing alerts to receive email notifications when your charges reach a specified threshold. Once enabled, this preference cannot be disabled. [Manage Billing Alerts](#)

☒ **Receive Billing Reports**
Turn on this feature to receive ongoing reports of your AWS charges once or more daily. AWS delivers these reports to the Amazon S3 bucket that you specify where indicated below. For consolidated billing customers, AWS generates reports only for paying accounts. Linked accounts cannot sign up for billing reports.

Save to S3 Bucket: ✓ Valid Bucket

Note: You must apply appropriate permissions to your S3 bucket [sample policy](#)

- f. Enable reports by selecting the check boxes in the **Report** section.

☒ **Receive Billing Reports**
Turn on this feature to receive ongoing reports of your AWS charges once or more daily. AWS delivers these reports to the Amazon S3 bucket that you specify where indicated below. For consolidated billing customers, AWS generates reports only for paying accounts. Linked accounts cannot sign up for billing reports.

Save to S3 Bucket: ✓ Valid Bucket

Note: You must apply appropriate permissions to your S3 bucket [sample policy](#)

You can also configure the granularity of these reports to display your AWS usage. In the table below, select whether you want the reports to display data by the month, day, or hour. Your reports can also display usage by custom tags that you create, or by AWS resource.

Report	
Monthly report ⓘ	<input checked="" type="checkbox"/>
Detailed billing report ⓘ	<input checked="" type="checkbox"/>
Cost allocation report ⓘ	<input checked="" type="checkbox"/>
Detailed billing report with resources and tags* ⓘ	<input checked="" type="checkbox"/>

* Needed for EC2 Usage Reports and Cost Explorer [Manage report tags](#)

- g. Click **Save preferences**.

Note: AWS may take up to 24 hours to generate report files with cost and billing information in the S3 bucket that you have created/configured in above steps.

- i. After generating the reports, you can see the .CSV files and other files under the S3 bucket that you have created.

Create the AWS Data Source

Complete the following steps to create data source for AWS.

1. Log on to BA Admin portal.
2. Select **Admin > Data Management > Add data source**.
3. The **Add Data Source** page opens. Select the **AWS data source** type.
4. Select or enter the configuration parameters.
5. Click **Next** to proceed to the validation page.

The following is an example of an AWS activation page.

Data Source Wizard Help x

AWS (Amazon Web Services)

*Instance name :

AWS Version : ▼

Time Zone : ▼

Data Source Type : ▼

*Access Key Id :

*Secret Access Key :

*Bucket :

*Account Id :

Proxy Host :

Proxy Port :

Proxy Username :

Proxy Password :

Proxy Domain :

Proxy Workstation :

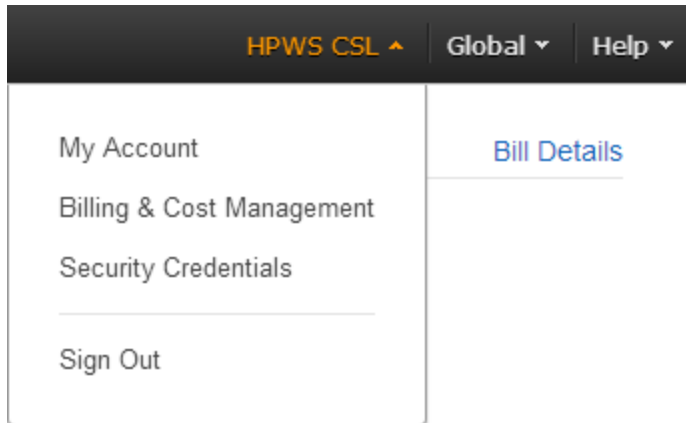
Initial Load Period (months) : ▼

Note:

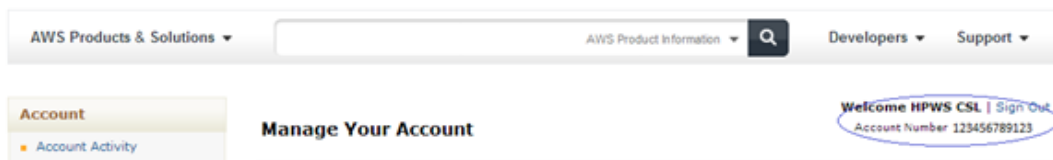
- For the property named 'Bucket', provide the name of the bucket that you have created in the previous section.
- For property named 'Account Id', provide the 12 digit AWS account id.

6. You can find the account ID for your AWS account using the following steps:

- a. Log on to Amazon console using a valid AWS account.
- b. Click on your account on top-right corner of the AWS Console. Select **My Account** from the options.



- c. You can find your account Id.



- d. Remove - from your account ID while configuring the EC2 data source.

Execute ETL process

After adding and activating the data sources, you must run the ETL to pull the data from the CSA and the EC2 sources, using the following steps:

1. In the BA application, click **Admin > Data Management > Run ETL**.
2. Click **Play** for the relevant data sources to start their ETL process. Completing the running of the ETL processes might take some time.

An example for successful completion of ETL for CSA and AWS data sources is shown below.

Users and Roles

Notifications

Semantic Layer

Settings

Data Management

Data Management Guide

Install Content Pack

Connect Data Source

Configure Consolidation

Run ETL

Activate CAP

Content Flow Management

Job Management

The Content Flow Manager enables you to manage all content runtime job streams.

Instance Name	Content Pack Name	Last End Time	Last Status	Next Start Time	Scheduler	Set Calculation		
EC2	AWS	2015-06-26 12:29:59 ...	Complete	Never	Add Scheduler	Set	▶	i
CSA45	CSA	2015-06-26 12:32:31 ...	Complete	Never	Add Scheduler	Set	▶	i

Activate CSA Live CAP

1. In the BA application, click **Admin > Data Management > Activate CAP**.

The list of CAPs is displayed.

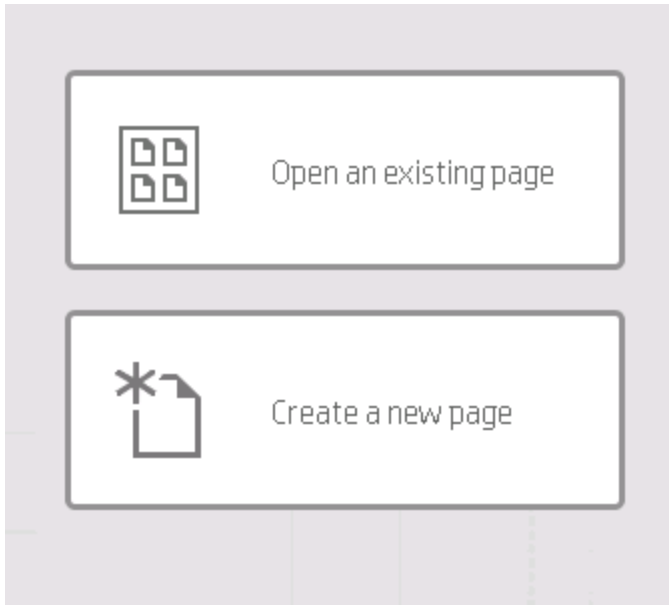
2. Deactivate the CSA_Demo CAP if it is activated.
3. Click **CSA**, and then click **Activate**. Wait until the CAP is activated.

You may need to wait for 5-10 minutes for BA to load the KPI data into CAP pages.

Note: The time needed by BA to load the KPI data depends on the number of calculations required and also on the amount of data available for calculations. You may need to logout and login to BA UI to see the updated data in pages

Launch pages with CSA KPIs

1. In the BA application, close the tab if it is open to display the Dashboard.
2. Select **Open an existing page** option.



3. In the Page Gallery, select the **Not Categorized** category and double-click the CSA related pages.

For details about the available pages, see ["Launch an ITBA Virtual Appliance Page with CSA Sample Data" on page 15](#).

Launch ITBA Virtual Appliance Pages from the CSA Management Console

Links to pages in the ITBA Virtual Appliance application are provided from the CSA Management Console.

Complete the following steps to launch ITBA Virtual Appliance pages from CSA.

1. Log on to the CSA server as an administrator.
2. Open the **hosts** files located at **C:\Windows\System32\drivers\etc** and add the following entry:

<IP_Address_BA_Server> itba.lab.com

where <IP_Address_BA_Server> is the IP Address of the ITBA Virtual Appliance server in your environment.

Note: If the entry already exists in the hosts file, update the ITBA Virtual Appliance server IP Address.

3. Launch the CSA Management Console and log on as the admin user.
4. Click the **Cloud Analytics** tile.

Note: The Cloud Analytics tiles must be enabled in CSA.

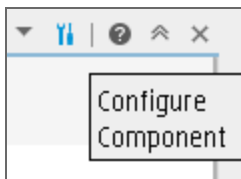
Hide UNKNOWN and INVALID Columns

This section describes how to hide INVALID or UNKNOWN columns from a configured component in a page.

The INVALID or UNKNOWN columns are default columns for KPIs in the ITBA Virtual Appliance. Based on the data that ITBA Virtual Appliance uses to calculate KPIs, these columns may or may not have proper data to show in a ITBA Virtual Appliance page.

To hide these default columns, complete the following steps:

1. Go to the component that shows INVALID or UNKNOWN columns.
2. Click **Configure Component** in the tray.



3. Select a number from the **Maximum number of slices** list according to the number of slices that are displayed in the component.


Example: If the number of slices displayed in a component are 3 then by selecting 4 from the pick list, UNKNOWN and INVALID columns are replaced with the OTHER column.

Troubleshooting

Unable to log on to BOE

Issue description

You are not able to log on to BOE and the UI shows the following error message.



The screenshot shows the SAP BusinessObjects Central Management Console login interface. At the top, the title "SAP BusinessObjects Central Management Console" is displayed. Below the title, a red error message reads: "Account information not recognized: Could not reach CMS 'hpba.lab.com:6400'. The CMS on machine 'hpba.lab.com' was stopped due to a critical error. (FWM 20031)". Below the error message, instructions state: "Enter your user information, and click 'Log On'." and "If you are unsure of your account information, contact your system administrator." The login form contains four fields: "System:" with the value "hpba.lab.com:6400", "User Name:" with the value "Administrator", "Password:" (empty), and "Authentication:" with a dropdown menu set to "Enterprise". A "Log On" button is located below the form. At the bottom left is the SAP logo, and at the bottom right is a "Help" link.

Solution

If the BOE service does not start properly, complete the following steps to start the service:


1. Log on to the itbabo appliance as root.
2. Run the command: **su boadmin**
3. Run the command: **cd /home/admin/bo/sap_bobj**
4. Run the command: **./tomcatshutdown.sh**
5. Run the command: **./stopservers**
6. Run the command : **./startservers**
7. Run the command: **./tomcatstartup.sh**
8. Launch the BOE URL and try to log on using the **Administrator** and **Admin111** credentials.

CSA-Billing Statement is empty

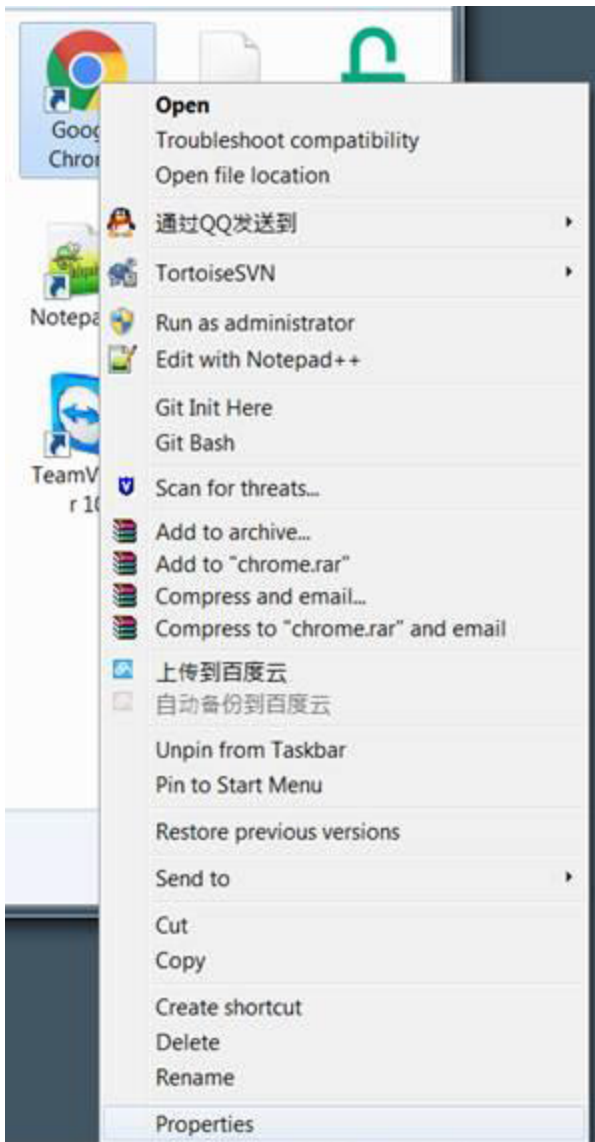
Issue description

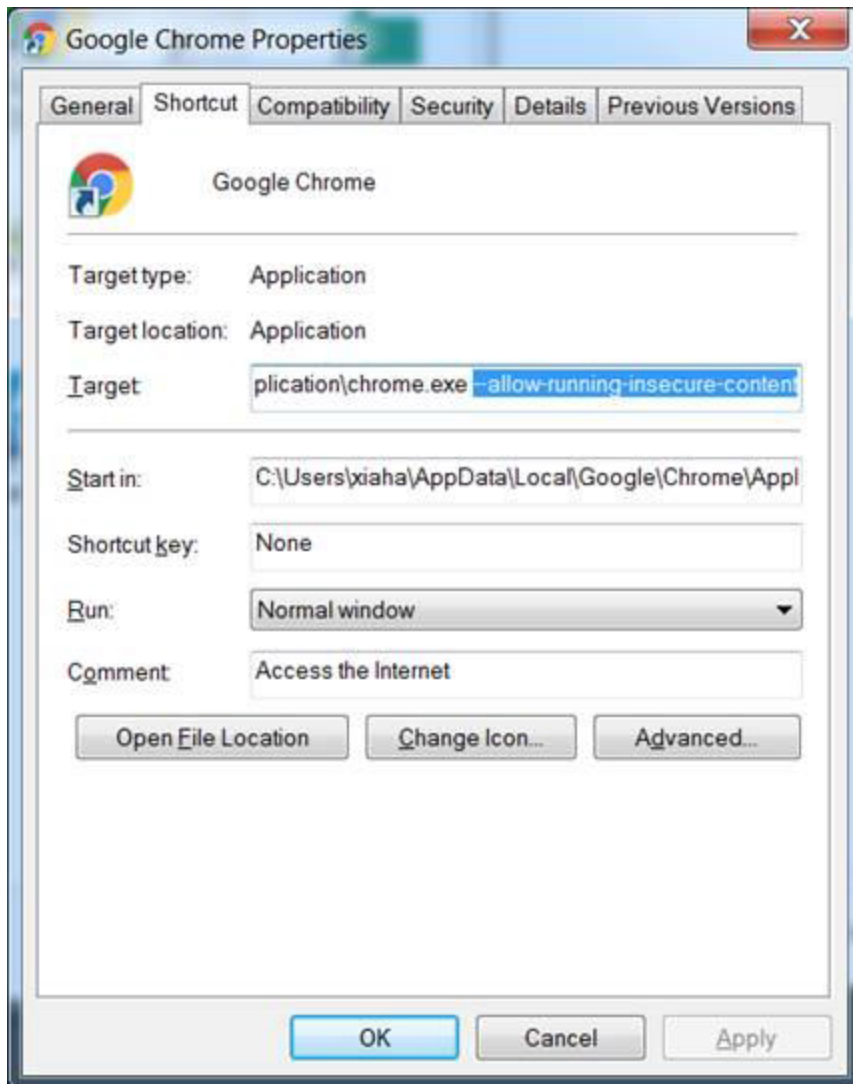
The CSA-Billing Statement for Cloud Service page is empty.

Solution

Click the  icon displayed on the right of the URL box in the browser and click the **Load unsafe scripts** link.

Workaround for Chrome 48: Add the command **--allow-running-insecure-content** to start.





Postgres service fails to start

Issue description

While starting the ITBA Virtual Appliance services, the Postgres service fails to start.

Solution

1. Open `/home/hpba/HPBA-10.00.615-618-master/pgsql/instance1/data/pg_hba.conf`.
2. Replace **itba.lab.com** with the current IP address of the ITBA Virtual Appliance under section **# IPv4 local connections:**, and then save and close the file.

License has expired

Issue description

The ITBA Virtual Appliance license is expired when logging on to the ITBA Virtual Appliance application.

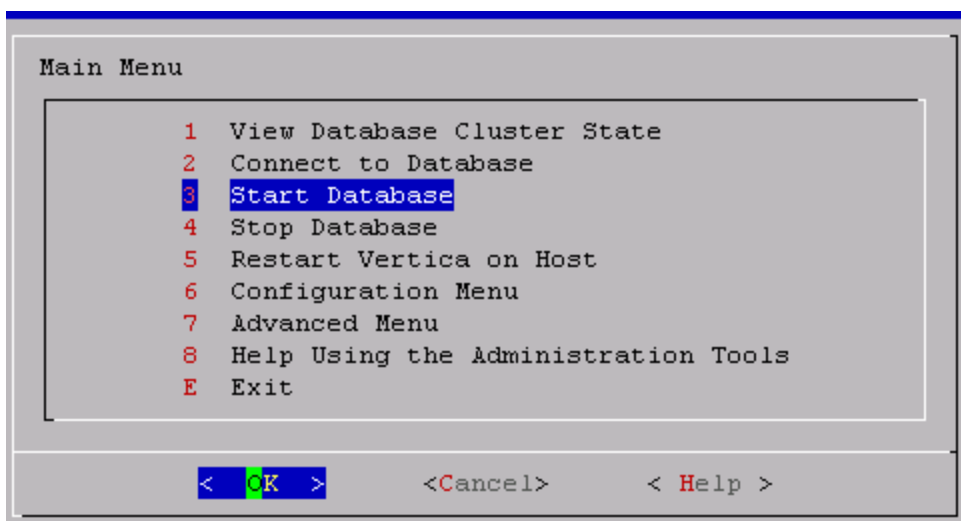
Solution

1. Get one valid license from **HPE support/HPE presales**.
2. Open a Unix console (bash) and go to the following **<HP-BA>/Tools/** directory and input **command `./maintenanceTool.sh`** to start the ITBA Virtual Appliance Maintenance Tool.
3. Enter **5** in **Please enter a number (0-6) to update the license**.
4. The user licenses information (license type and capacity) is automatically displayed in the shell.
5. Enter the license key.

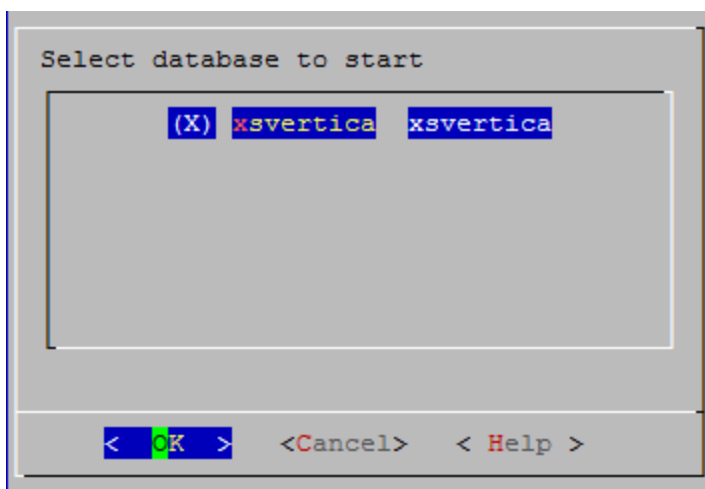
Appendix A: Start the Vertica Database on the ITBA Virtual Appliance

To start the Vertica database that the ITBA Virtual Appliance uses, complete the following steps:

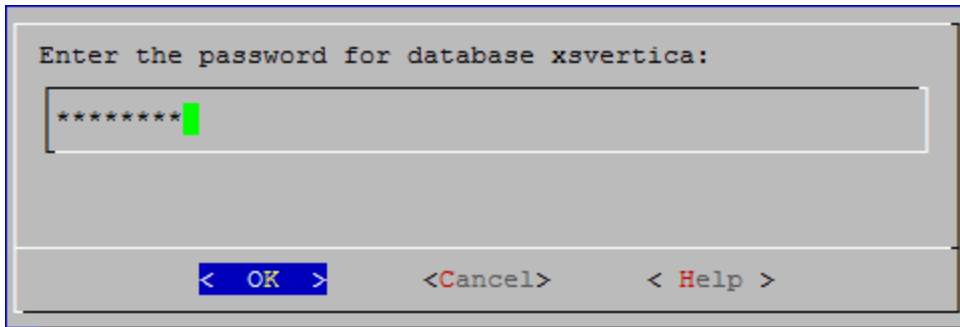
1. Run the command: **su dbadmin**
2. Run the command: **/opt/vertica/bin/admintools**



3. In the Main Menu, select **Start Database** and click **Enter**. Use the Arrow keys on the keyboard to select the required options from the menu.
4. Click the spacebar to select the Vertica database and click **Enter**.

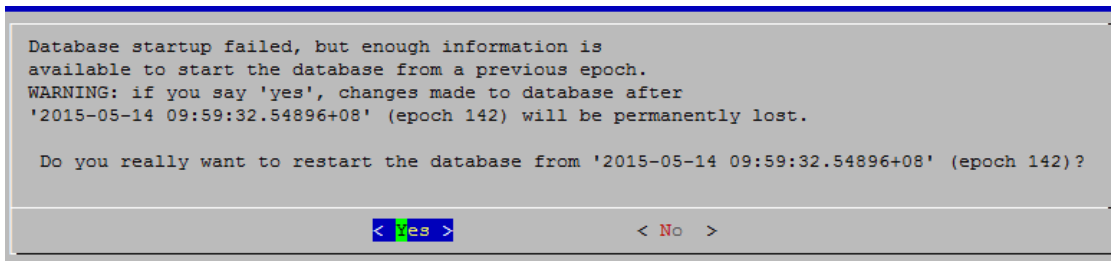


5. Enter **openview** as the password and click **Enter**.

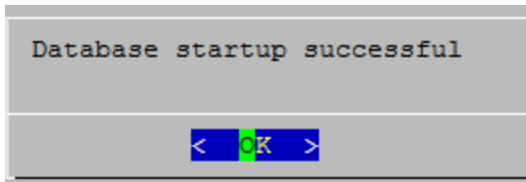


6. Wait till the Vertica database is started, and then click **Enter** to continue when prompted.

Note: If you see any warnings as shown in the image below, select **Yes** and click **Enter**.



7. If Vertica database start is successful, the following message is displayed.



8. Select the **Exit** option on the Main Menu, and then click **Enter** to close the Main Menu.
9. Reboot server and login as **root** when the server is up.

Appendix B: Start ITBA Virtual Appliance Services

Complete the following steps to start ITBA Virtual Appliance services:

1. Run the command: **su hpba**.
2. Run the command: **cd /home/hpba/HPBA-10.00.615-618-master/supervisor/bin**
3. Run the script: **./hpba-restart.sh**.
4. When the message **Do you want to restart HPBA?** is displayed, type **yes** and click **Enter**.

Appendix C: CentOS and open-vmtool Licenses

This product includes code licensed under the GNU General Public License, the GNU Lesser General Public License, and/or certain other open source licenses. A complete machine-readable copy of the source code corresponding to such code is available upon request. This offer is valid to anyone in receipt of this information and shall expire three years following the date of the final distribution of this product version by Hewlett-Packard Company.

To obtain such source code, send a check or money order in the amount of US \$10.00 to:

Hewlett-Packard Company
Attn: General Counsel
3000 Hanover Street
Palo Alto, CA 94304
USA

Please specify the product and version for which you are requesting source code.

You may also request a copy of this source code free of charge at

<http://www.hp.com/software/opensource>.

Send documentation feedback

If you have comments about this document, you can [contact the documentation team](#) by email. If an email client is configured on this system, click the link above and an email window opens with the following information in the subject line:

Feedback on Installation Guide (ITBA Virtual Appliance 2016.07)

Just add your feedback to the email and click send.

If no email client is available, copy the information above to a new message in a web mail client, and send your feedback to SW-Doc@hpe.com.

We appreciate your feedback!

