



Hewlett Packard
Enterprise

HPE Enterprise Maps

Software Version: 3.10

Windows and Linux Operating System

Virtual Appliance Quick Start Guide

Document Release Date: April 2016

Software Release Date: April 2016

Legal Notices

Warranty

The only warranties for Hewlett Packard Enterprise products and services are set forth in the express warranty statements accompanying such products and services. Nothing herein should be construed as constituting an additional warranty. HPE shall not be liable for technical or editorial errors or omissions contained herein.

The information contained herein is subject to change without notice.

Restricted Rights Legend

Confidential computer software. Valid license from HPE required for possession, use or copying. Consistent with FAR 12.211 and 12.212, Commercial Computer Software, Computer Software Documentation, and Technical Data for Commercial Items are licensed to the U.S. Government under vendor's standard commercial license.

Copyright Notice

© Copyright 2003-2016 Hewlett Packard Enterprise Development LP

Trademark Notices

Adobe™ is a trademark of Adobe Systems Incorporated.

Microsoft® and Windows® are U.S. registered trademarks of Microsoft Corporation.

UNIX® is a registered trademark of The Open Group.

This product includes an interface of the 'zlib' general purpose compression library, which is Copyright © 1995-2002 Jean-loup Gailly and Mark Adler.

Documentation Updates

The title page of this document contains the following identifying information:

- Software Version number, which indicates the software version.
- Document Release Date, which changes each time the document is updated.
- Software Release Date, which indicates the release date of this version of the software.

To check for recent updates or to verify that you are using the most recent edition of a document, go to:

<https://softwaresupport.hp.com>

This site requires that you register for an HPE Passport and sign in. To register for an HPE Passport ID, go to: **<https://hpp12.passport.hpe.com/hppcf/createuser.do>**

Or click the **Register** link at the top of the HPE Software Support page.

You will also receive updated or new editions if you subscribe to the appropriate product support service. Contact your HPE sales representative for details.

Support

Visit the HPE Software Support Online web site at: **<https://softwaresupport.hp.com>**

This web site provides contact information and details about the products, services, and support that HPE Software offers.

HPE Software online support provides customer self-solve capabilities. It provides a fast and efficient way to access interactive technical support tools needed to manage your business. As a valued support customer, you can benefit by using the support web site to:

- Search for knowledge documents of interest
- Submit and track support cases and enhancement requests
- Download software patches
- Manage support contracts
- Look up HPE support contacts
- Review information about available services
- Enter into discussions with other software customers
- Research and register for software training

Most of the support areas require that you register as an HPE Passport user and sign in. Many also require a support contract. To register for an HPE Passport ID, go to:

<https://hpp12.passport.hpe.com/hppcf/createuser.do>

To find more information about access levels, go to:

<https://softwaresupport.hp.com/web/softwaresupport/access-levels>

HPE Software accesses the HPE Software to explore Enterprise Solutions that meet your business needs, and a full list of Enterprise Software Products and Services. The URL for this Web site is

<https://www.hpe.com/us/en/software.html>.

About this PDF Version of Online Help

This document is a PDF version of the online help. This PDF file is provided so you can easily print multiple topics from the help information or read the online help in PDF format. Because this content was originally created to be viewed as online help in a web browser, some topics may not be formatted properly. Some interactive topics may not be present in this PDF version. Those topics can be successfully printed from within the online help.

Contents

Chapter 1: About This Guide	5
Chapter 2: HPE EM Virtual Appliance Overview	6
Chapter 3: Hardware and Software Prerequisites	7
Chapter 4: Steps to Set Up and Use the Virtual Appliance	8
1. Download the Virtual Appliance File	8
2. Deploy the Virtual Appliance Using the Oracle VirtualBox	8
3. Open the HPE EM Welcome Page	9
4. Log In to HPE EM	10
5. Power-Off the Virtual Appliance	10
Chapter 5: Re-import and Clear Demo Data in HPE EM	11
Re-import Demo Data to HPE EM	11
Clear the Data in HPE EM	12
Chapter 6: Install the Extension for Sparx Systems Enterprise Architect Plugin	13
Chapter 7: Install and Configure Cloud Service Automation	14
Chapter 8: Enable Hardware Virtualization	16

Chapter 1: About This Guide

Welcome to the HPE Enterprise Maps - Virtual Appliance *Quick Start Guide*. This guide explains how to use the Virtual Appliance to use the trial version of HPE Enterprise Maps (HPE EM).

This guide contains the following chapters:

- ["HPE EM Virtual Appliance Overview" on page 6](#)
- ["Hardware and Software Prerequisites" on page 7](#)
- ["Steps to Set Up and Use the Virtual Appliance" on page 8](#)
- ["Re-import and Clear Demo Data in HPE EM " on page 11](#)
- ["Install the Extension for Sparx Systems Enterprise Architect Plugin" on page 13](#)
- ["Install and Configure Cloud Service Automation" on page 14](#)
- ["Enable Hardware Virtualization" on page 16](#)

Chapter 2: HPE EM Virtual Appliance Overview

Trial Version

The HPE EM Virtual Appliance is a trial version of the product you may use for evaluation purposes. The trial version contains a 60 days instant-on license.

Log in to the Virtual Appliance

The Virtual Appliance can be accessed through HTTP/S, a console, or SSH.

To SSH to the machine, use the following credentials (recommended):

- User name: **hpe**
- Password: **changeit**

For administrative tasks use the following credentials (not recommended):

- User name: **root**
- Password: **hpdemo**

Warranty

The HPE EM Virtual Appliance is provided as-is with no warranty.

Prior to using the Virtual Appliance you must agree with the terms and conditions provided in the homepage.

Chapter 3: Hardware and Software Prerequisites

The following hardware and software is required to run the Virtual Appliance:

- 64-bit Operating System (Windows/Mac/Linux)
- VirtualBox 5
- VMware Workstation Player 12
- Intel CPU with minimum 2 cores and hardware virtualization support (VT-x/AMD-V) enabled
- At least 8GB RAM
- At least 20GB free hard disk space

Chapter 4: Steps to Set Up and Use the Virtual Appliance

To set up and use the Virtual Appliance to use the Trial version of HPE EM, follow these 5 procedures:

- "1. Download the Virtual Appliance File" below
- "2. Deploy the Virtual Appliance Using the Oracle VirtualBox" below
- "3. Open the HPE EM Welcome Page" on the next page
- "4. Log In to HPE EM" on page 10
- "5. Power-Off the Virtual Appliance" on page 10

1. Download the Virtual Appliance File

Step 1. Open www.hp.com/go/em, click Free Trial, fill in the Evaluation form, click Continue and Agree to the Software Download Terms of Use.

Step 2. Select Using Standard Download and download the Virtual Appliance file.

Step 1

Step 2

Name	File Size	Using Standard Download
HP Enterprise Maps 1.00 Eng Software Media	1334 MB	Download
HP Enterprise Maps 1.00 Eng Virtual Appliance (hp-em-1.00.ova)	2643 MB	Download
HP Enterprise Maps 1.00 Welcome Letter	80 KB	Download
Virtual Appliance Letter	40 KB	Download

The size of the Virtual Appliance file is over 2.6GB. Allocate several hours to download it.

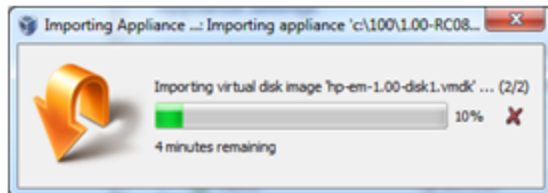
2. Deploy the Virtual Appliance Using the Oracle VirtualBox

Open <http://www.virtualbox.org> to download and install Oracle VirtualBox (refer to "Hardware and Software Prerequisites" on page 7 for supported versions).

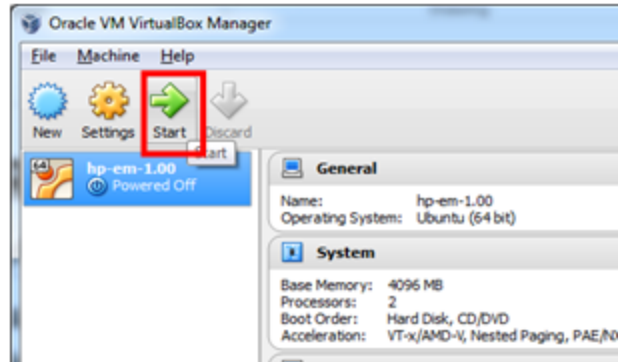
Step 3. Start the VirtualBox: **Select File > Import Appliance** and then select the downloaded hpe-em-3.10.ova file.

Step 4. Start the Virtual Appliance: Click **Start**.

Step 3



Step 4

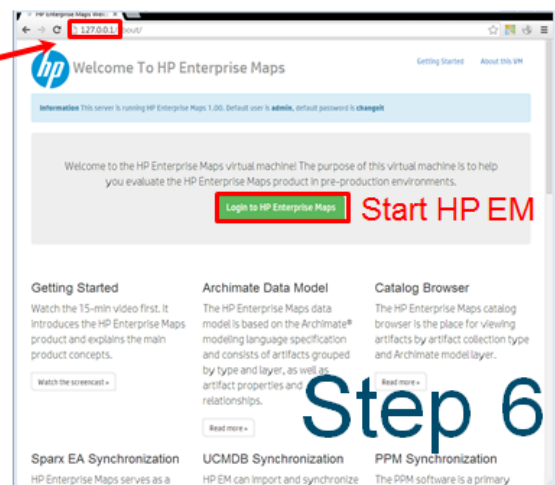
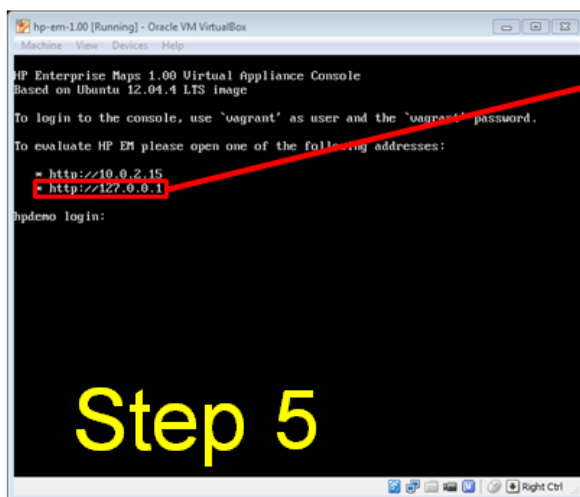


HPE EM also supports VMware virtualization software.

3. Open the HPE EM Welcome Page

Step 5. Wait for login prompt to appear and locate the HPE EM addresses in your console.

Step 6. Use one of the addresses in your web browser and click the green Login button to open the HPE EM login page.





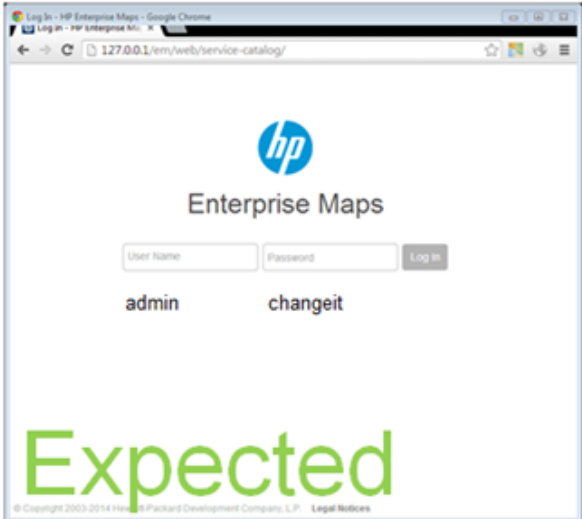
The trial version contains a 60 days instant-on license. To renew the license, use the HPE Licensing Portal <http://enterpriselicense.hpe.com/redirector/home>.


If the Welcome page is not displayed, try to open other listed address from the console. If all addresses are inaccessible, refer to Troubleshooting section in README.TXT or contact your sales representative for support.


4. Log In to HPE EM

Step 7: Login using **admin** as the User Name and **changeit** as the Password.

 **EM server is down. Refresh the page in 1-2 minutes**



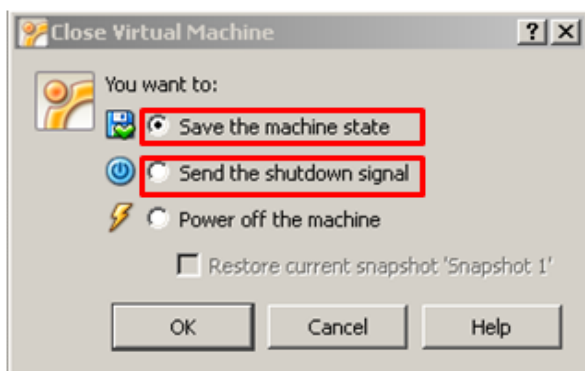
 **Check the deployment status**
at the http://127.0.0.1/mod_cluster-manager



5. Power-Off the Virtual Appliance

To Close the Virtual Appliance, select one of the following options:

- **Save the machine state** - Similar to hibernate on a real computer. The Virtual Appliance will start quickly but requires additional disk space.
- **Send the shutdown signal** - Full Virtual Appliance shutdown. Same effect as if you had pressed the power button on a real computer



Both options will save all the data stored in the HPE EM software.

Chapter 5: Re-import and Clear Demo Data in HPE EM

This chapter describes how to re-import the demo data in HPE EM and how to clear the data as follows:

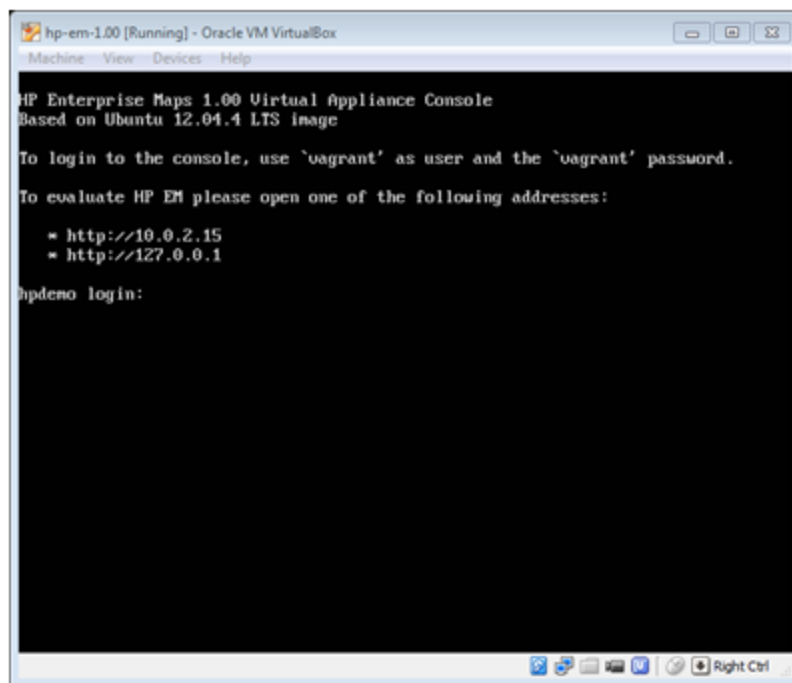
- ["Re-import Demo Data to HPE EM" below](#)
- ["Clear the Data in HPE EM" on the next page](#)

Re-import Demo Data to HPE EM

Login to the console:

login: **hpe**

password: **changeit**



Type the following command (appears in console help):

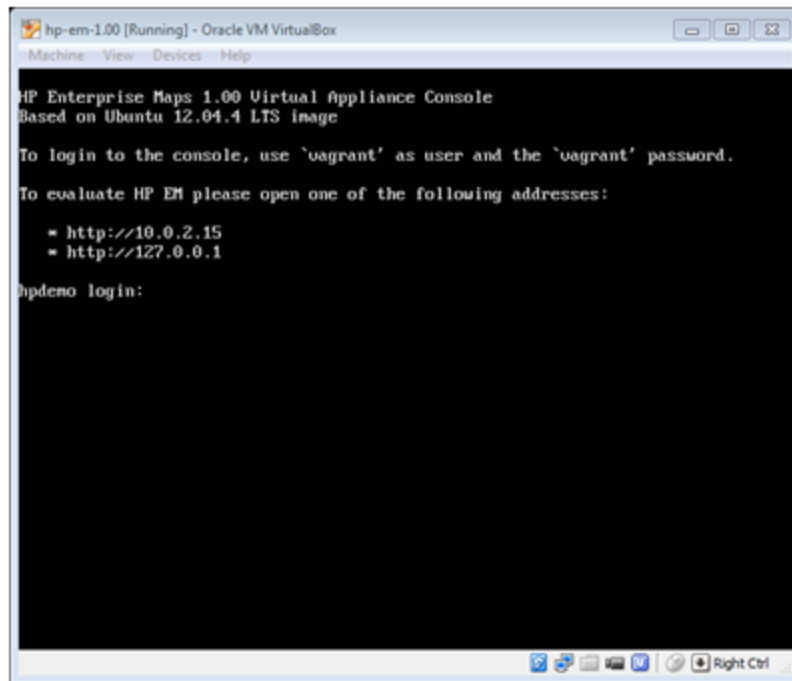
```
demo
```

Clear the Data in HPE EM

Login to the console:

login: **hpe**

password: **changeit**



Type the following command (appears in console help):

```
reset
```

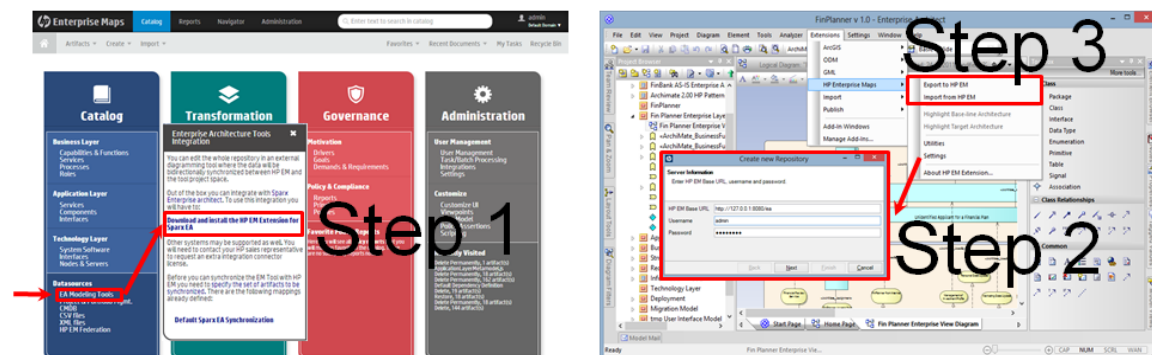
Chapter 6: Install the Extension for Sparx Systems Enterprise Architect Plugin

Step 1. Login to HPE EM, download the HPE EM Extension for Sparx Systems Enterprise Architect (EA) plugin and install the hpe-em-sparx-3.10.msi file.

Step 2. Open the project in Extension for Sparx Systems EA, and configure the HPE EM repository.

Step 3. Export and import data with HPE EM.

Caution: The HPE EM synchronization will change the EAP file irreversibly. Use a separate EAP copy for testing purposes.



Chapter 7: Install and Configure Cloud Service Automation

This topic describes the steps to be followed to set up CSA into EM.

Download and Install CSA Installer

- As soon as you log in to the VA console, in the Welcome message you see *csainstall* option, which is really a bash alias prepared to call the script and launch "Easy CSA installation".
- To run *csa.download* and *csa.install* in one step, run *csainstall* command after you login as HPE user.

SSO Configuration (Single Sign-On)

This configuration is optional and requires administration rights to modify the hosts file.

To configure:

- Run *make sso.configure*. This file ensures all the steps in the SSO configuration are complete

Refer the tables below for endpoints available for both EM and CSA post installation & deployment, and SSO configuration respectively:

Endpoints for Installation & Deployment

Product	URL	User Name	Password
EM	http://<ipaddress>:8180/em	admin	changeit
CSA	https://<ipaddress>:8444/ csa	admin	cloud
OO Central (Operations Orchestration)	http://<ipaddress>:8643/oo	admin	changeit

Go to Cloud Transformation tile and select either the Cloud Assessment sub-tile or the Reports sub-tile.

Endpoints for SSO Configuration

Product	URL	User Name	Password
EM	https://hpedemo.example.com:8543/em	admin	cloud
CSA	https://hpedemo.example.com:8444/ csa	admin	cloud

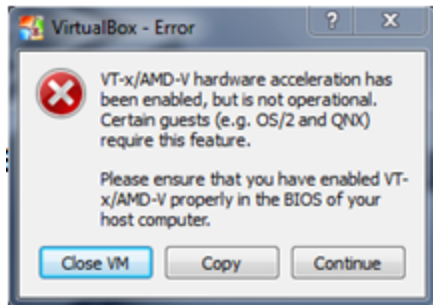
Once HPE EM and HP CSA are installed and configured, you can simply run the Makefile targets as follows for subsequent use:

- *em.start*
- *em.stop*
- *csa.start*
- *csa.stop*
- *oo.start*
- *oo.stop*

Note: In case of any errors run *make <target> 2>&1 >logfile.txt* in order to redirect the console to the file.

Chapter 8: Enable Hardware Virtualization

If you see the following dialog, follow the example steps below to enable hardware virtualization in BIOS on your computer:



Step 1. Reboot your computer and press **F10 Bios Setup** during bootup.

Step 2. Select **Device Configurations**.

Step 3. Be sure the **Virtualization Technology** option is checked.

