

HP Unified Functional Testing

Software Version: 12.53

Runtime Engine Guide



Legal Notices

Warranty

The only warranties for Hewlett Packard Enterprise Development LP products and services are set forth in the express warranty statements accompanying such products and services. Nothing herein should be construed as constituting an additional warranty. HPE shall not be liable for technical or editorial errors or omissions contained herein.

The information contained herein is subject to change without notice.

Restricted Rights Legend

Confidential computer software. Valid license from HPE required for possession, use or copying. Consistent with FAR 12.211 and 12.212, Commercial Computer Software, Computer Software Documentation, and Technical Data for Commercial Items are licensed to the U.S. Government under vendor's standard commercial license.

Copyright Notice

© Copyright 1992 - 2016 Hewlett Packard Enterprise Development LP

Trademark Notices

Adobe® and Acrobat® are trademarks of Adobe Systems Incorporated.

Google™ and Google Maps™ are trademarks of Google Inc

Intel® and Pentium® are trademarks of Intel Corporation in the U.S. and other countries.

Microsoft®, Windows®, Windows® XP, and Windows Vista® are U.S. registered trademarks of Microsoft Corporation.

Oracle and Java are registered trademarks of Oracle and/or its affiliates.

Documentation Updates

The title page of this document contains the following identifying information:

- Software Version number, which indicates the software version.
- Document Release Date, which changes each time the document is updated.
- Software Release Date, which indicates the release date of this version of the software.

To check for recent updates or to verify that you are using the most recent edition of a document, go to:

<https://softwaresupport.hpe.com>.

This site requires that you register for an HPE Passport and sign in. To register for an HPE Passport ID, go to

<https://softwaresupport.hpe.com> and click **Register**.

Support

Visit the HPE Software Support Online web site at: <https://softwaresupport.hpe.com>

This web site provides contact information and details about the products, services, and support that HPE Software offers.

HPE Software online support provides customer self-solve capabilities. It provides a fast and efficient way to access interactive technical support tools needed to manage your business. As a valued support customer, you can benefit by using the support web site to:

- Search for knowledge documents of interest
- Submit and track support cases and enhancement requests
- Download software patches
- Manage support contracts
- Look up HPE support contacts
- Review information about available services
- Enter into discussions with other software customers
- Research and register for software training

Most of the support areas require that you register as an HPE Passport user and sign in. Many also require a support contract. To register for an HPE Passport ID, go to: <https://softwaresupport.hpe.com> and click **Register**.

To find more information about access levels, go to: <https://softwaresupport.hpe.com/web/softwaresupport/access-levels>.

HPE Software Solutions & Integrations and Best Practices

Visit **HPE Software Solutions Now** at <https://softwaresupport.hpe.com/group/softwaresupport/search-result-/facetsearch/document/KM01702710> to explore how the products in the HPE Software catalog work together, exchange information, and solve business needs.

Visit the **Cross Portfolio Best Practices Library** at <https://hpin.hpe.com/group/best-practices-hpsw> to access a wide variety of best practice documents and materials.

About the UFT Runtime Engine

The UFTRuntime Engine enables you to run UFT tests (both GUI and API) and business process tests on your computer without installing the entire UFT IDE. In addition, you can also install the Runtime Engine without the Run Results Viewer, UFT Add-in for ALM, sample applications, or Help documentation. This can potentially save you valuable disk space on your computer.

When you run tests with the Runtime Engine, you can access and run the test from a number of different places without the need to open the UFT interface and configure UFT options. When the test runs it runs in the background. At the end of the test run, you can view the test results.

Using the Runtime Engine requires very little experience in using UFT - you do not need to edit tests, change configurations or settings, or understand how to make UFT work with your application. You simply select the test, run the test, and view the run results.

The Runtime Engine can be used in a number of different scenarios:

| | |
|---|---|
| Running tests and components from ALM | You can set up test runs from the Test Lab module in ALM, and run these on a computer using the Runtime Engine. Using the Runtime Engine enables you to run the test, without the need to interact with the UFT interface (such as loading UFT add-ins in the Add-in Manager dialog box). |
| Running tests from automation: | You also can run tests using automation using the Runtime Engine. The Runtime Engine installation enables you to save disk space on the computer running these tests, freeing up system resources on that computer for other tasks |
| Running tests using the Jenkins plug-in: | The Runtime Engine can be installed on a build server or computer running builds of your applications. Using the Jenkins plug-in, you run a UFT test as a post-build action of your application's build process. Having the Runtime Engine installed on this computer to run the UFT test enables you to free up system resources for the important application build tasks. |
| Running tests using external UFT tools | When you install the Runtime Engine, you also have external tools which enable you to run UFT tests locally, including the Test Batch Runner and the Silent Test Runner. These tools enable you to run a test locally against your application as it is developed, and view the results instantly after the test run. Because the Runtime Engine does not enable you to edit a test, this version of the UFT installation can be used by your application's developers and QA on an ongoing basis to provide regular testing of the application throughout the development process. |

The Runtime Engine also supports all the UFT Add-ins as the the full UFT IDE, so you can run tests using any supported technology using the Runtime Engine. All objects and methods for all UFT Add-ins are supported for use with the Runtime Engine.

As part of running a test, you can set specific run-time options. These options are set in the Runtime Engine Settings dialog box, available from the Start Menu (**Start > All Programs > HP Software > HP Unified Functional Testing > Tools > Runtime Engine Settings**):

| | |
|--|--|
| Add-ins | You can specify add-ins to be loaded. |
| Run options | You can specify how the Runtime Engine runs tests, including the format of the run results, whether the run results are opened automatically after a test run, and if the Runtime Engine takes screen captures or movies of the run session. |
| Remote connection options | You can specify if other HP applications are permitted to run tests on this computer using the Runtime Engine or specify how another computer can run tests via Remote Desktop Connection. |
| Run result export options | You can specify how and what the Runtime Engine should export from the run results after a run session. |
| Text Recognition options | You can specify how the Runtime Engine works with text in your application when running a GUI test. |
| Web and Windows Application options | You can specify how the Runtime Engine runs tests for specific scenarios against a Web application or Windows application. |

For task details on how to use the Runtime Engine, see ["How to Use the UFT Runtime Engine" on page 6](#). For details on the Runtime Engine Settings, see ["Prerequisite - How to set test run options" on page 9](#).

How to Use the UFT Runtime Engine

What is the UFT Runtime Engine? The UFT Runtime Engine is a slimmer installation of UFT that enables you to run UFT tests without the entire UFT IDE.

When you should use the UFT Runtime Engine? You can use the UFT Runtime Engine in a number of different scenarios:

- Running tests and components from ALM (either from the Test Plan, Test Lab, or Business Components modules)
- Running tests from an automation script
- Running tests from the Jenkins plugin
- Running tests from external UFT tools such as the Test Batch Runner or the Silent Test Runner
- Running tests locally against your application (after it has been updated) without needing to edit the test

What do you want to know?

- ["Prerequisite - How to ensure the Runtime Engine is installed correctly" below](#)
- ["Prerequisite - How to install your license" below](#)
- ["Prerequisite - How to set test run options" on page 9](#)
- ["How to run tests from ALM" on page 10](#)
- ["How to run tests using automation" on page 11](#)
- ["How to run tests from the Jenkins plugin" on page 12](#)
- ["How to run tests using the Test Batch Runner" on page 13](#)
- ["How to run tests using the Silent Test Runner" on page 13](#)

Prerequisite - How to ensure the Runtime Engine is installed correctly

Before running a test using the Runtime Engine, ensure the following:

- You have installed and loaded the correct add-ins for your test. The currently loaded add-ins can be modified in the Runtime Engine settings dialog box.
- You have selected the **Allow other HP products to run tests and components** option in the UFT Configurations screen of the installation wizard

If you did not perform one or both of these options, you can configure this option by running the UFT Setup again and selecting the **Change** option in the installation wizard.

Prerequisite - How to install your license

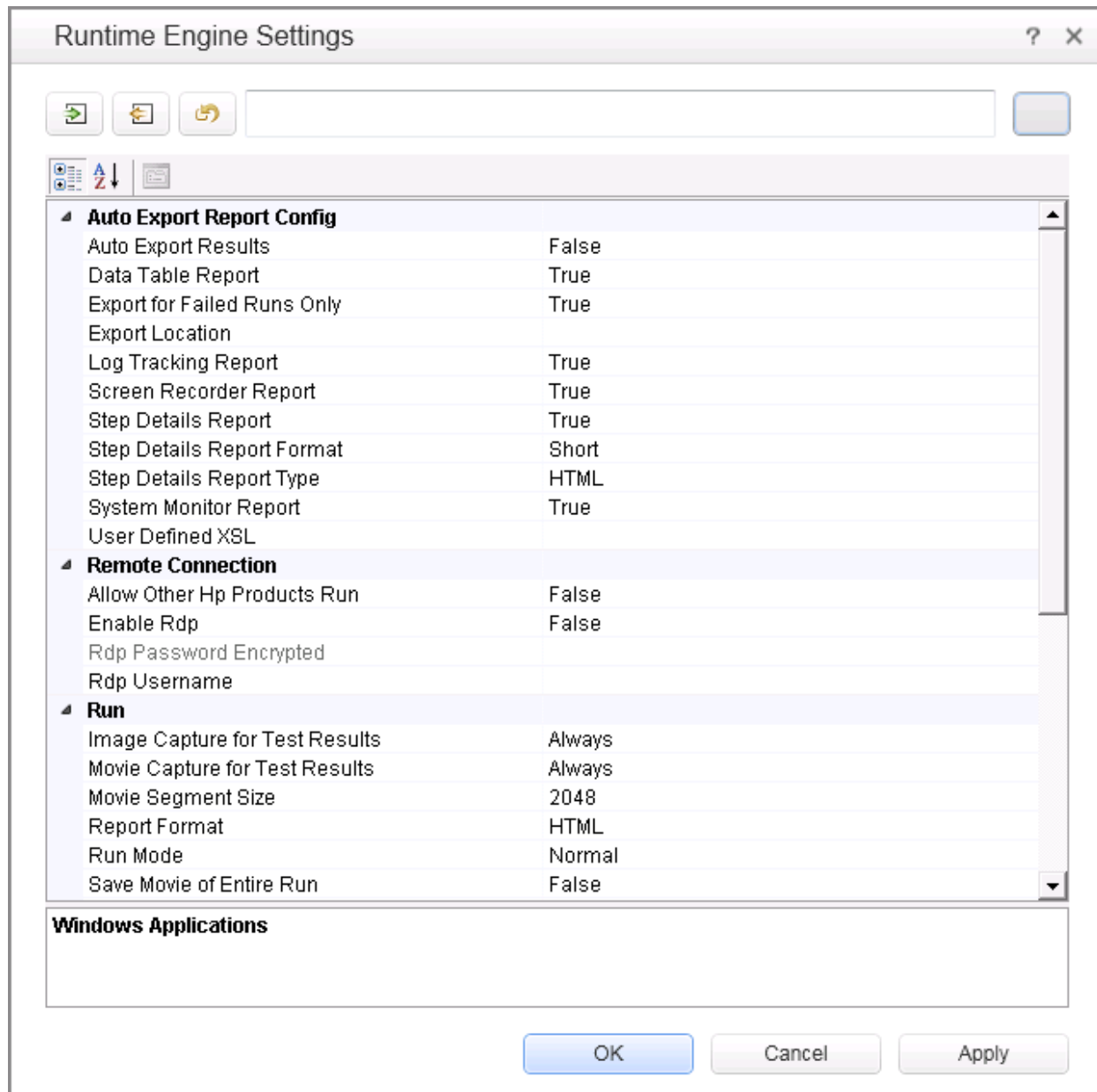
Before you can run tests with the Runtime Engine, you must install a valid UFT license. You do this either using the license installation wizard or with the command line:

| | |
|--------------------------------|---|
| From the License Wizard | <ol style="list-style-type: none">1. From the Start Menu, open the License Installation Wizard (Start > All Programs > HP Software > Unified Functional Testing > Tools > License Installation Wizard).2. Follow the steps in the wizard to install the correct license type. <div data-bbox="462 415 1409 779" style="background-color: #e6f2e6; padding: 10px;"><p>Note:</p><ul style="list-style-type: none">• When requesting a license, you need the license type UFT Runtime Engine.• For a seat license, you need a license key string or a license key file.• For a concurrent license installation, you need the address of the License Server on which your licenses are installed.</div>3. Exit the wizard. <p>When the Runtime Engine runs your test, it will check for the license before running the test.</p> |
| From the Command Line | <ol style="list-style-type: none">1. Open a command window.2. In the command window, enter one of the following:<ul style="list-style-type: none">• For a seat license: <code>"<UFT installation directory>\bin\HP.UFT.LicenseInstall.exe" seat "<license key string>"/seat "<path to the license key file"</code> <div data-bbox="479 1188 1409 1308" style="background-color: #e6f2e6; padding: 10px;"><p>Note: You need to provide either the license key string or the path to the license key file, not both.</p></div>• For a concurrent license: <code>"<UFT installation directory>\bin\HP.UFT.LicenseInstall.exe" concurrent <license ID> <license version> <server name/address> [<redundant server name/address>] [/force]</code> <div data-bbox="479 1509 1409 1852" style="background-color: #e6f2e6; padding: 10px;"><p>Note:</p><ul style="list-style-type: none">◦ The <code><server name/address></code> OR <code><redundant server name/address></code> uses the format <code>server name/address:port</code>. The port number is optional.◦ The <code><server name/address></code> OR <code><redundant server name/address></code> must be in the same format as the server name or address listed in the Main tab of the Configuration</div> |



| | |
|--|---|
| | <p>! pane of the License Server. For more details on setting up the License Server address, see the <i>Autopass License Server User Guide</i>.</p> <ul style="list-style-type: none">○ Both the [redundant server name/address] and /force parameters are optional.○ The /force parameter saves the license installation information even if the current installation fails. On subsequent UFT sessions, UFT will check the listed license server for the listed license. <p>3. Exit the wizard.</p> <p>When the Runtime Engine runs your test, it will check for the license before running the test.</p> |
|--|---|

Prerequisite - How to set test run options

Before you run your tests, you should specify the options for running your tests. You can use the Runtime Engine Settings dialog box to specify these settings. This dialog box is available from the Start Menu (**Start > All Programs > HP Software > HP Unified Functional Testing > Tools > Runtime Engine Settings**).



You can update the settings in the following ways:

| | |
|---|---|
| Manually configure the settings: | <p>Using the options provided in the dialog box, select the relevant values from the drop-down lists and click Apply to save the settings.</p> <p>After you update these settings, you can click the Export Settings to Script button , which exports these settings into an automation script file (saved with a .vbs extension). This script can be reimported on your computer for later test runs or shared with others running tests via the Runtime Engine.</p> |
| Import the settings from a configuration script: | <p>You can also update these settings from an generated automation script exported from the UFT IDE on another computer or exported from another installation of the Runtime Engine.</p> <p>Do the following:</p> <ol style="list-style-type: none">1. Click the Import Settings from Script button .2. Navigate to the directory where your import script (with a .vbs extension) is saved and click Open. <p>The settings in the dialog are updated accordingly to reflect the data in the script.</p> |


For descriptions of each of the options, select the item in the dialog box and view the description at the bottom of the dialog.

Note: If you are setting the options for the Remote Desktop connection in the Runtime Engine Settings dialog, you must log in to the computer as an administrator and start the HP.UFT.Helper service before changing these options.

How to run tests from ALM

Using the Runtime Engine, you can run tests and components directly from the Test Lab Modules:

1. Ensure that the DCOM has been configured to run tests from ALM as part of the installation.
If this configuration was not done during the Runtime Engine installation, you can perform the configuration with the Additional Installation Requirements tool (installed with the Runtime Engine), found in the Start Menu (**Start > All Programs > HP Software > HP Unified Functional Testing > Tools > Additional Installation Requirements > Configure DCOM Settings for ALM Integration** option).
2. Set your test run options, as described in "[Prerequisite - How to set test run options on the previous page](#)."

3. Start the Remote Agent from the Start Menu (**Start > All Programs > HP Software > HP Unified Functional Testing > Tools > Remote Agent**).
4. In the Windows tray, right-click the **Remote Agent** icon  and select **Settings**.
5. In the Remote Agent Settings dialog box, configure the following options as needed:
 - **Restart testing tool after __ runs**
 - **Close testing tool after __ idle minutes**
 - **Restart testing tool after**

Note: The other options in the Remote Agent are not applicable for use with the Runtime Engine.

6. In ALM, from the Test Plan module, run individual tests or a test set, depending on your needs. For details on setting up test sets and running from ALM, see the *HP Application Lifecycle Management User Guide*.
7. After the test run is finished, view the results as specified in your test run options.

How to run tests using automation

Automation is a Microsoft technology that makes it possible to access software objects inside one application from other applications. These objects can be created and manipulated using a scripting or programming language such as VBScript or VC++.

Automation enables you to control the functionality of an application programmatically.

Using automation, you can write scripts that open UFT, set options and settings, and run the test. This enables you to automatically run tests at scheduled times without your manual intervention.

For example, you can create and run an automation script from Microsoft Visual Basic that does the following:

- Loads the required add-ins for a test or component
- Starts UFT
- Opens the test or component
- Configures settings that correspond to those in the Options dialog box, Test or Business Components Settings dialog box, and the Record and Run Settings dialog box (all in the full UFT IDE)
- Runs the test or component

When you run tests using automation, do the following:

1. **If another computer is running automation scripts via the computer with the Runtime Engine**, ensure that the DCOM has been configured to run tests with automation as part of the installation.

If this configuration was not done during the Runtime Engine installation, you can perform the configuration with the Additional Installation Requirements tool (installed with the Runtime Engine), found in the Start Menu (**Start > All Programs > HP Software > HP Unified Functional Testing > Tools > Additional Installation Requirements > Configure DCOM Settings for Automation Scripts** option).

2. Ensure that your script is accessible from the computer with the Runtime Engine.
3. Set your test run options, as described in "[Prerequisite - How to set test run options on page 9](#)".
4. Run your test script, using your preferred automation run model. For details on running tests via automation, see the *HP Unified Functional Testing User Guide*, available from the HP Software Product Manuals Web site (<https://softwaresupport.hpe.com/group/softwaresupport/search-result?keyword=>).

Note: The options in your automation scripts that set UFT to be visible are ignored when running a test with the Runtime Engine. The test runs without problems even if your automation scripts contain these options, including the following automation methods:

- AutoGenerateWith
- DisableVORRecognition
- DisplayKeywordView
- TimetoActivateWinAfterPoint
- WithGenerationLevel

5. After the test run is finished, view the results as specified in your test run options.

How to run tests from the Jenkins plugin

The Jenkins CI plugin integrates with the Runtime Engine to enable you to automatically run your UFT tests directly from the file system as part of the build process. To run these tests, do the following:

1. Ensure that your tests or test batches are saved and accessible on the file system.
2. Set your test run options, as described in "[Prerequisite - How to set test run options on page 9](#)".
3. Configure the Jenkins plug-in to run functional tests. For details on this configuration, see the Jenkins plug-in wiki page at <https://wiki.jenkins-ci.org/display/JENKINS/HP+Application+Automation+Tools#HPApplicationAutomationTools-RunningFunctionalTestsorLoadRunnerScenariosfromtheFileSystem>.
4. In the Jenkins plug-in, specify the location of the tests or test batches in the **Tests** box of the plug-in.


Note: To specify multiple entries, click the down arrow on the right of the field and enter each test path on a separate line. Make sure that the paths are accessible from all machines in the local network.

When a build of your application runs, the Jenkins plug-in will automatically run this test as configured in the plug-in settings.

5. After the test run is finished, view the results as specified in your test run options.

How to run tests using the Test Batch Runner

You can also use the Test Batch Runner (installed with the Runtime Engine) to run a single test or a group of tests combined into a test batch (saved with an **.mtb** extension). To run these tests, do the following:

1. Ensure that your tests and test batches are saved and accessible on the file system.
2. Set your test run options, as described in "[Prerequisite - How to set test run options on page 9](#)".
3. Open the Test Batch Runner from the Start Menu (**Start > All Programs > HP Software > HP Unified Functional Testing > Tools > Test Batch Runner**).
4. In the Test Batch Runner main window, add tests to the list of tests to be run in one of the following ways:
 - Select **File > Add** and select a precompiled Test Batch (**.mtb**) file.
 - Create or open a test batch file (**File > New/Open**), and then add tests to the test batch (**Tests > Add Test from Folder**).
5. When you have added all the necessary tests to run, in the toolbar, click the **Run** button .

The Runtime Engine runs the test or tests on your application automatically. You can view the status of each individual test run in the main Test Batch Runner window.

6. After the test run is finished, view the results as specified in your test run options. The Test Batch Window provides the location of the run results.

How to run tests using the Silent Test Runner

The Runtime Engine enables you to run tests using the Silent Test Runner (installed with the Runtime Engine). This enables you to simulate the way a UFT test runs from LoadRunner and Business Service Management and to verify that your UFT test is compatible with LoadRunner and Business Service Management.

Note: If you want to run tests with the Silent Test Runner, you must install the **Samples** component in the **Custom Setup** screen of the installation wizard.

To run a test with the Silent Test Runner, do the following:

1. Ensure that your tests and test batches are saved and accessible on the file system.
2. Set your test run options, as described in "[Prerequisite - How to set test run options](#)" on page 9.
3. Open the Silent Test Runner from the Start Menu (**Start > All Programs > HP Software > HP Unified Functional Testing > Tools > Silent Test Runner**).
4. In the Silent Test Runner window, click the **Browse** button and select a test.
5. Click **Run Test** to start the test run.

When the test run is complete, the Silent Test Runner window displays a message confirming the end of the test run.

6. In the Silent Test Runner window, click the **Test Run Log** window. A text file is displayed with a report of all test steps from the current run.

Send Us Feedback



Let us know how we can improve your experience with the Runtime Engine Guide.

Send your email to: docteam@hpe.com

