

HP Enterprise Maps

Software Version: 3.00
Windows and Linux Operating Systems

Virtual Appliance Quick Start Guide

Document Release Date: October 2015
Software Release Date: October 2015



Legal Notices

Warranty

The only warranties for HP products and services are set forth in the express warranty statements accompanying such products and services. Nothing herein should be construed as constituting an additional warranty. HP shall not be liable for technical or editorial errors or omissions contained herein.

The information contained herein is subject to change without notice.

Restricted Rights Legend

Confidential computer software. Valid license from HP required for possession, use or copying. Consistent with FAR 12.211 and 12.212, Commercial Computer Software, Computer Software Documentation, and Technical Data for Commercial Items are licensed to the U.S. Government under vendor's standard commercial license.

Copyright Notice

© Copyright 2003-2015 Hewlett-Packard Development Company, L.P.

Trademark Notices

Adobe™ is a trademark of Adobe Systems Incorporated.

Intel® Xeon® and Intel® Core i7® are registered trademarks of Intel Corporation in the U.S. and other countries.

Microsoft®, Windows®, Windows® XP and Windows 7® are U.S. registered trademarks of Microsoft Corporation.

UNIX® is a registered trademark of TheOpenGroup.

Oracle and Java are registered trademarks of Oracle and/or its affiliates.

Documentation Updates

The title page of this document contains the following identifying information:

- Software Version number, which indicates the software version.
- Document Release Date, which changes each time the document is updated.
- Software Release Date, which indicates the release date of this version of the software.

To check for recent updates or to verify that you are using the most recent edition of a document, go to: <http://h20230.www2.hp.com/selfsolve/manuals>

This site requires that you register for an HP Passport and sign in. To register for an HP Passport ID, go to: <http://h20229.www2.hp.com/passport-registration.html>

Or click the **New users - please register** link on the HP Passport login page.

You will also receive updated or new editions if you subscribe to the appropriate product support service. Contact your HP sales representative for details.

Support

Visit the HP Software Support Online web site at: <http://www.hp.com/go/hpsupport>

This web site provides contact information and details about the products, services, and support that HP Software offers.

HP Software online support provides customer self-solve capabilities. It provides a fast and efficient way to access interactive technical support tools needed to manage your business. As a valued support customer, you can benefit by using the support web site to:

- Search for knowledge documents of interest
- Submit and track support cases and enhancement requests
- Download software patches
- Manage support contracts
- Look up HP support contacts
- Review information about available services
- Enter into discussions with other software customers
- Research and register for software training

Most of the support areas require that you register as an HP Passport user and sign in. Many also require a support contract. To register for an HP Passport ID, go to:

<http://h20229.www2.hp.com/passport-registration.html>

To find more information about access levels, go to:

http://h20230.www2.hp.com/new_access_levels.jsp

HP Software Solutions Now accesses the HPSW Solution and Integration Portal Web site. This site enables you to explore HP Product Solutions to meet your business needs, includes a full list of Integrations between HP Products, as well as a listing of ITIL Processes. The URL for this Web site is

<http://h20230.www2.hp.com/sc/solutions/index.jsp>

About this PDF Version of Online Help

This document is a PDF version of the online help. This PDF file is provided so you can easily print multiple topics from the help information or read the online help in PDF format. Because this content was originally created to be viewed as online help in a web browser, some topics may not be formatted properly. Some interactive topics may not be present in this PDF version. Those topics can be successfully printed from within the online help.

Contents

Chapter 1: About This Guide	5
Chapter 2: HP EM Virtual Appliance Overview	6
Chapter 3: Hardware and Software Prerequisites	7
Chapter 4: Steps to Set Up and Use the Virtual Appliance	8
1. Download the Virtual Appliance File	8
2. Deploy the Virtual Appliance Using the Oracle VirtualBox	8
3. Open the HP EM Welcome Page	9
4. Log In to HP EM	10
5. Power-Off the Virtual Appliance	10
Chapter 5: Re-import and Clear Demo Data in HP EM	12
Re-import Demo Data to HP EM	12
Clear the Data in HP EM	13
Chapter 6: Install the Extension for Sparx Systems Enterprise Architect Plugin	14
Chapter 7: Install and Configure Cloud Service Automation	15
Chapter 8: Enable Hardware Virtualization	17

Chapter 1: About This Guide

Welcome to the *HP Enterprise Maps - Virtual Appliance Quick Start Guide*. This guide explains how to use the Virtual Appliance to use the trial version of HP Enterprise Maps (HP EM).

This guide contains the following chapters:

- ["HP EM Virtual Appliance Overview" on page 6](#)
- ["Hardware and Software Prerequisites" on page 7](#)
- ["Steps to Set Up and Use the Virtual Appliance" on page 8](#)
- ["Re-import and Clear Demo Data in HP EM " on page 12](#)
- ["Install the Extension for Sparx Systems Enterprise Architect Plugin" on page 14](#)
- ["Install and Configure Cloud Service Automation" on page 15](#)
- ["Enable Hardware Virtualization" on page 17](#)

Chapter 2: HP EM Virtual Appliance Overview

Trial Version

The HP EM Virtual Appliance is a trial version of the product you may use for evaluation purposes. The trial version contains a 60 days instant-on license.

Log in to the Virtual Appliance

The Virtual Appliance can be accessed through HTTP/S, a console, or SSH.

To SSH to the machine, use the following credentials (recommended):

- User name: **hp**
- Password: **changeit**

For administrative tasks use the following credentials (not recommended):

- User name: **root**
- Password: **hpdemo**

Warranty

The HP EM Virtual Appliance is provided as-is with no warranty.

Prior to using the Virtual Appliance you must agree with the terms and conditions provided in the homepage.

Chapter 3: Hardware and Software Prerequisites

The following hardware and software is required to run the Virtual Appliance:

- 64-bit Operating System (Windows/Mac/Linux/Solaris)
- Intel CPU with hardware virtualization support (VT-x/AMD-V) enabled
- At least 8GB RAM
- At least 20GB free hard disk space

Chapter 4: Steps to Set Up and Use the Virtual Appliance

To set up and use the Virtual Appliance to use the Trial version of HP EM, follow these 5 procedures:

- "1. Download the Virtual Appliance File" below
- "2. Deploy the Virtual Appliance Using the Oracle VirtualBox" below
- "3. Open the HP EM Welcome Page" on the next page
- "4. Log In to HP EM" on page 10
- "5. Power-Off the Virtual Appliance" on page 10

1. Download the Virtual Appliance File

Step 1. Open www.hp.com/go/em, click Free Trial, fill in the Evaluation form, click Continue and Agree to the Software Download Terms of Use.

Step 2. Select Using Standard Download and download the Virtual Appliance file.

HP Enterprise Maps 1.00 English Software Evaluation

About yourself

First Name * Last Name * Email *

May HP contact you via email? * Yes No

About your company

Company * Phone * Country * United States

Address 1 * Address 2 * City/Town *

State/province * Zip/postal code *

Required * Privacy Statement

Cancel Next

HP Enterprise Maps 1.00 English Software Evaluation

Please review this first:

HP Enterprise Maps 1.00 Welcome Letter

Please review this first:

Virtual Appliance Letter

You may now download your software and supporting materials.

For License keys or to download content again, please refer to our download confirmation email sent to mirekm@post.cz. Review our [FAQ](#) for more helpful information.

Name	File Size	Using Standard Download
HP Enterprise Maps 1.00 Eng Software Media	1334 MB	Download
HP Enterprise Maps 1.00 Eng VirtualAppliance (hp-em-1.00.ova)	2643 MB	Download
HP Enterprise Maps 1.00 Welcome Letter	80 KB	Download
Virtual Appliance Letter	40 KB	Download

The size of the Virtual Appliance file is over 2.6GB. Allocate several hours to download it.

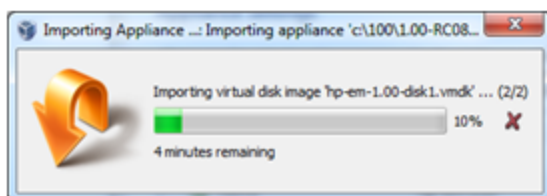
2. Deploy the Virtual Appliance Using the Oracle VirtualBox

Open <http://www.virtualbox.org> to download and install Oracle VirtualBox (v4.3.x)

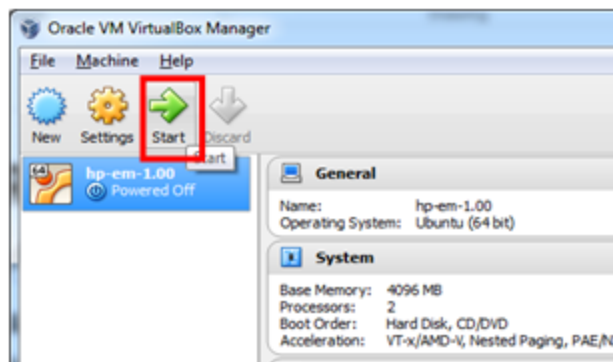
Step 3. Start the VirtualBox: **Select File > Import Appliance** and then select the downloaded hp-em-3.00.ova file.

Step 4. Start the Virtual Appliance: Click **Start**.

Step 3



Step 4

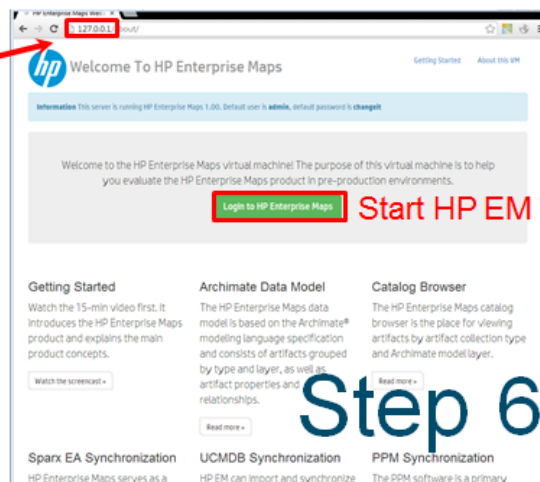
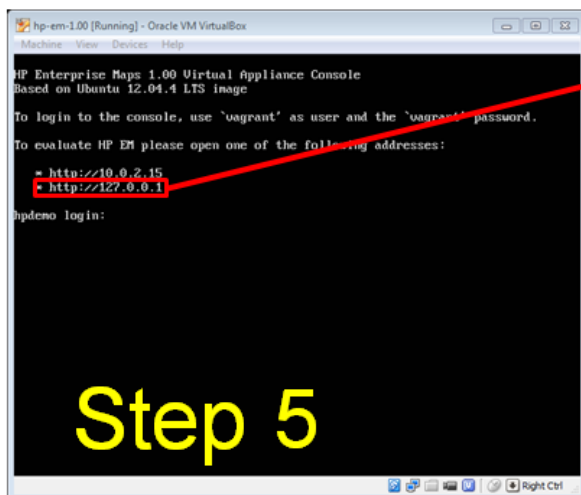


HP EM also supports VMware virtualization software.

3. Open the HP EM Welcome Page

Step 5. Wait for login prompt to appear and locate the HP EM Addresses in your console.

Step 6. Use one of the addresses in your web browser and click the green Login button to open the HP EM login page.

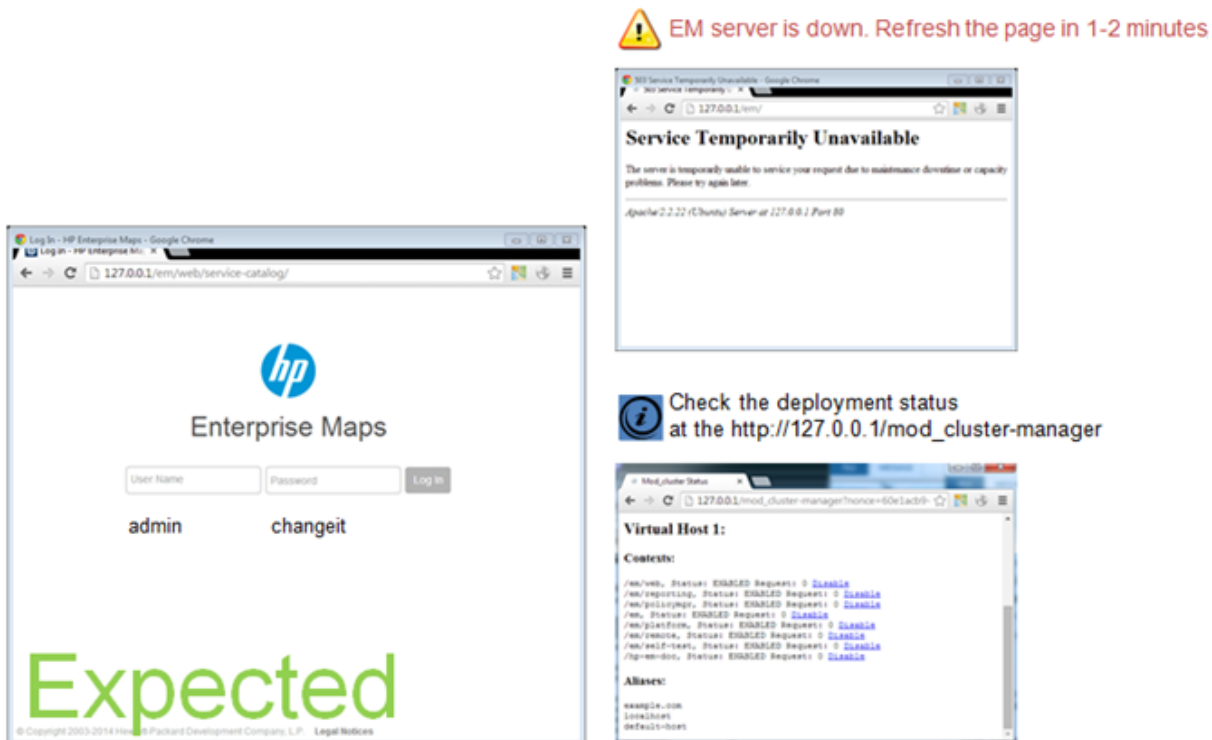


The trial version contains a 60 days instant-on license. To renew the license, use the HP Licensing Portal <http://www.hp.com/software/licensing>.

If the Welcome page is not displayed, try to open other listed address from the console. If all addresses are inaccessible, refer to Troubleshooting section in README.TXT or contact your sales representative for support.

4. Log In to HP EM

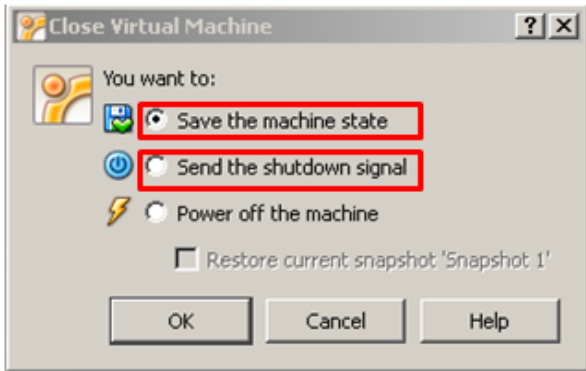
Step 7: Login using **admin** as the User Name and **changeit** as the Password.



5. Power-Off the Virtual Appliance

To Close the Virtual Appliance, select one of the following options:

- **Save the machine state** - Similar to hibernate on a real computer. The Virtual Appliance will start quickly but requires additional disk space.
- **Send the shutdown signal** – Full Virtual Appliance shutdown. Same effect as if you had pressed the power button on a real computer



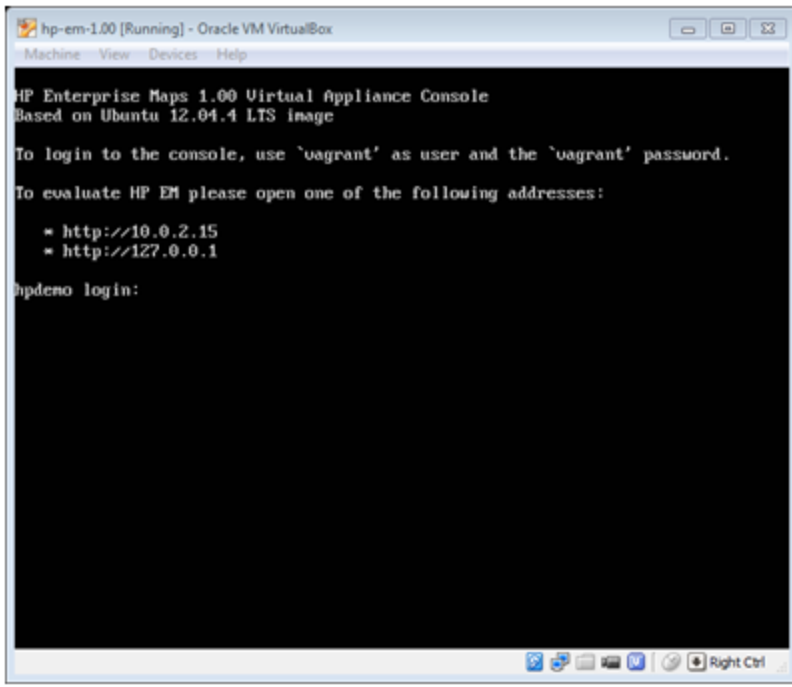
Both options will save all the data stored in the HP EM software.

Chapter 5: Re-import and Clear Demo Data in HP EM

This chapter describes how to re-import the demo data in HP EM and how to clear the data as follows:

- "Re-import Demo Data to HP EM" below
- "Clear the Data in HP EM" on the next page

Re-import Demo Data to HP EM

<p>Login to the console: login: hp password: changeit</p>	
--	---

Type the following command (appears in console help):

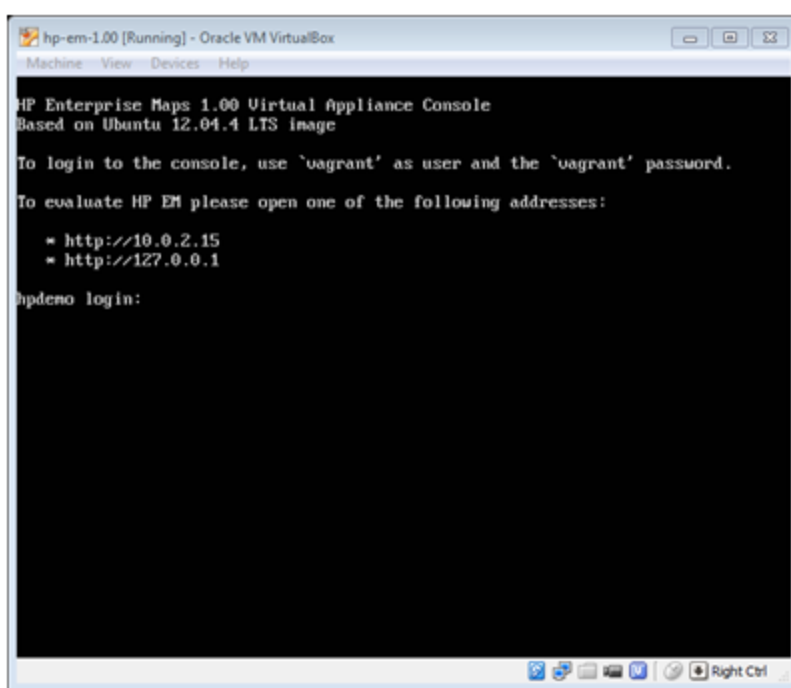
```
demo
```

Clear the Data in HP EM

Login to the console:

login: **hp**

password: **changeit**



Type the following command (appears in console help):

```
reset
```

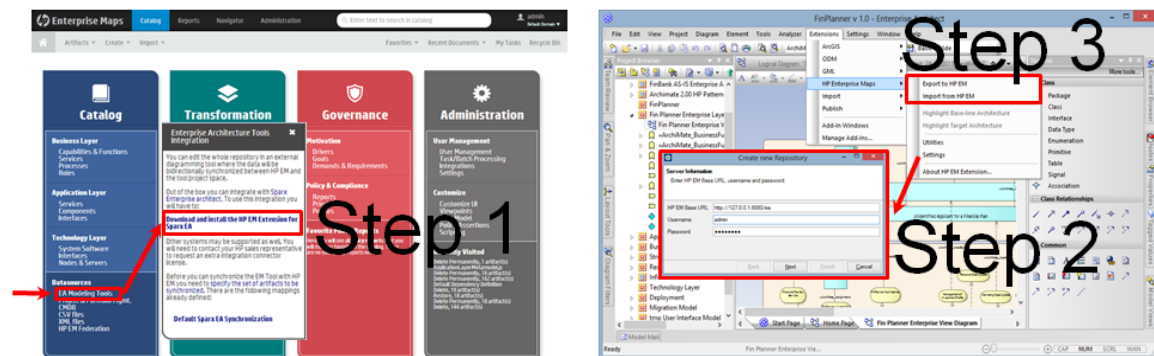
Chapter 6: Install the Extension for Sparx Systems Enterprise Architect Plugin

Step 1. Login to HP EM, download the HP EM Extension for Sparx Systems Enterprise Architect (EA) plugin and install the hp-em-sparx-3.00.msi file.

Step 2. Open the project in Extension for Sparx Systems EA, and configure the HP EM repository.

Step 3. Export and import data with HP EM.

Caution: The HP EM synchronization will change the EAP file irreversibly. Use a separate EAP copy for testing purposes.



Chapter 7: Install and Configure Cloud Service Automation

This topic describes the steps to be followed to set up CSA into EM.

Download and Install CSA Installer

- As soon as you log in to the VA console, in the Welcome message you see *csainstall* option, which is really a bash alias prepared to call the script and launch "Easy CSA installation".
- To run *csa.download* and *csa.install* in one step, run *csainstall* command after you login as HP user.

SSO Configuration (Single Sign-On)

This configuration is optional and requires administration rights to modify the hosts file.

To configure:

- Run *make sso.configure*. This file ensures all the steps in the SSO configuration are complete

Refer the tables below for endpoints available for both EM and CSA post installation & deployment, and SSO configuration respectively:

Endpoints for Installation & Deployment

Product	URL	User Name	Password
EM	http://<ipaddress>:8180/em	admin	changeit
CSA	https://<ipaddress>:8444/ csa	admin	cloud
OO Central (Operations Orchestration)	http://<ipaddress>:8643/oo	admin	changeit

Go to Cloud Transformation tile and select either the Cloud Assessment sub-tile or the Reports sub-tile.

Endpoints for SSO Configuration

Product	URL	User Name	Password
EM	https://hpdemo.example.com:8543/em	admin	cloud
CSA	https://hpdemo.example.com:8444/ csa	admin	cloud

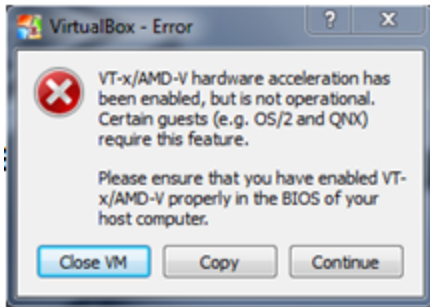
Once HP EM and HP CSA are installed and configured, you can simply run the Makefile targets as follows for subsequent use:

- em.start
- em.stop
- csa.start
- csa.stop
- oo.start
- oo.stop

Note: In case of any errors run `make <target> 2>&1 >logfile.txt` in order to redirect the console to the file.

Chapter 8: Enable Hardware Virtualization

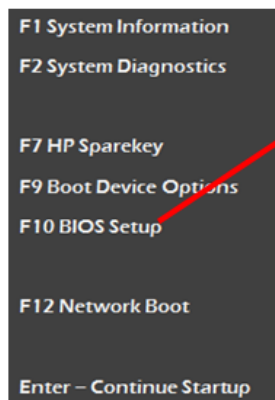
If you see the following dialog, follow the example steps below to enable hardware virtualization in BIOS on your computer:



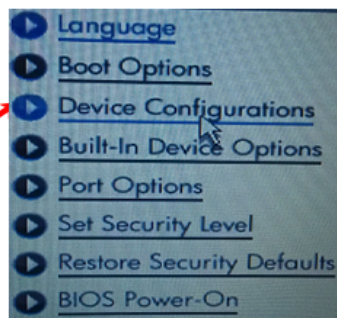
Step 1. Reboot your computer and press **F10 Bios Setup** during bootup.

Step 2. Select **Device Configurations**.

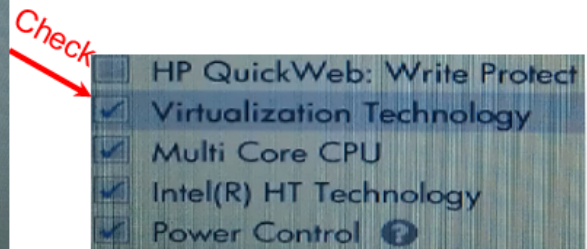
Step 3. Be sure the **Virtualization Technology** option is checked.



Step 1



Step 2



Step 3