



Hewlett Packard
Enterprise

HPE Database and Middleware Automation

Ultimate Edition

Software Version: 10.40

Linux, Solaris, AIX, HP-UX, and Windows

Workflows for Promote

Document Release Date: December 2015

Software Release Date: December 2015

Legal Notices

Warranty

The only warranties for Hewlett Packard Enterprise products and services are set forth in the express warranty statements accompanying such products and services. Nothing herein should be construed as constituting an additional warranty. HPE shall not be liable for technical or editorial errors or omissions contained herein.

The information contained herein is subject to change without notice.

Restricted Rights Legend

Confidential computer software. Valid license from HPE required for possession, use or copying. Consistent with FAR 12.211 and 12.212, Commercial Computer Software, Computer Software Documentation, and Technical Data for Commercial Items are licensed to the U.S. Government under vendor's standard commercial license.

Copyright Notice

© Copyright 2015 Hewlett Packard Enterprise Development LP

Trademark Notices

Adobe™ is a trademark of Adobe Systems Incorporated.

Microsoft® and Windows® are U.S. registered trademarks of Microsoft Corporation.

UNIX® is a registered trademark of The Open Group.

This product includes an interface of the 'zlib' general purpose compression library, which is Copyright © 1995-2002 Jean-loup Gailly and Mark Adler.

Documentation Updates

The title page of this document contains the following identifying information:

- Software Version number, which indicates the software version.
- Document Release Date, which changes each time the document is updated.
- Software Release Date, which indicates the release date of this version of the software.

To check for recent updates or to verify that you are using the most recent edition of a document, go to:

<https://softwaresupport.hp.com>

This site requires that you register for an HP Passport and sign in. To register for an HP Passport ID, go to:

<https://hpp12.passport.hp.com/hppcf/createuser.do>

Or click the **the Register** link at the top of the HPE Software Support page.

You will also receive updated or new editions if you subscribe to the appropriate product support service.

Contact your HPE sales representative for details.

Support

Visit the HPE Software Support Online web site at: **<https://softwaresupport.hp.com>**

This web site provides contact information and details about the products, services, and support that HPE Software offers.

HPE Software online support provides customer self-solve capabilities. It provides a fast and efficient way to access interactive technical support tools needed to manage your business. As a valued support customer, you can benefit by using the support web site to:

- Search for knowledge documents of interest
- Submit and track support cases and enhancement requests
- Download software patches
- Manage support contracts
- Look up HPE support contacts
- Review information about available services
- Enter into discussions with other software customers
- Research and register for software training

Most of the support areas require that you register as an HP Passport user and sign in. Many also require a support contract. To register for an HP Passport ID, go to:

<https://hpp12.passport.hp.com/hppcf/createuser.do>

To find more information about access levels, go to:

<https://softwaresupport.hp.com/web/softwaresupport/access-levels>

HP Software Solutions Now accesses the HPESW Solution and Integration Portal Web site. This site enables you to explore HPE Product Solutions to meet your business needs, includes a full list of Integrations between HPE Products, as well as a listing of ITIL Processes. The URL for this Web site is **<http://h20230.www2.hp.com/sc/solutions/index.jsp>**

About this PDF Version of Online Help

This document is a PDF version of the online help. This PDF file is provided so you can easily print multiple topics from the help information or read the online help in PDF format. Because this content was originally created to be viewed as online help in a web browser, some topics may not be formatted properly. Some interactive topics may not be present in this PDF version. Those topics can be successfully printed from within the online help.

Contents

Promote Solution	5
Promote Workflow – Export	6
Prerequisites for this Workflow	7
How This Workflow Works	8
How to Run This Workflow	11
Sample Scenario	13
Parameters for Promote Workflow – Export	15
Promote Workflow – Import	16
Prerequisites for this Workflow	17
How This Workflow Works	18
How to Run This Workflow	24
Sample Scenarios	27
Parameters for Promote Workflow – Import	32
Promote Workflow – Export and Import	34
Prerequisites for this Workflow	37
How This Workflow Works	38
How to Run This Workflow	44
Sample Scenarios	48
Parameters for Promote Workflow - Export and Import	54
Send Documentation Feedback	57

Promote Solution

This section includes the following topics:

Workflow type	Workflow name
Promoting	"Promote Workflow – Export" on the next page
	"Promote Workflow – Import" on page 16
	"Promote Workflow – Export and Import" on page 34

Promote Workflow – Export

To use this workflow in your environment, see the following information:

Topic	Information Included
"Prerequisites for this Workflow"	List of prerequisites that must be satisfied before you can run this workflow
"How This Workflow Works"	Information about what the workflow does, including validation checks performed, and steps executed
"How to Run This Workflow"	Instructions for running this workflow in your environment
"Sample Scenario"	Examples of typical parameter values for this workflow
Parameters	List of input parameters for this workflow

The information presented here assumes the following:

- HPE DMA is installed and operational.
- At least one suitable target server is available.
- You are logged in to HPE DMA as a user with Workflow Creator (or Administrator) capability.
- You have Read and Execute permission for the organization that contains your target server.

Prerequisites for this Workflow

Be sure that the following prerequisites are satisfied before you run the ["Promote Workflow – Export"](#) workflow:

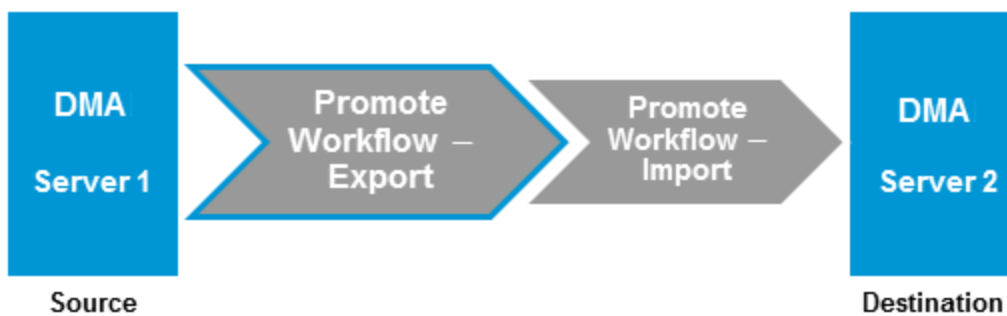
- You are using HPE Database and Middleware Automation version 10.40 (or later).
- You have installed the latest version of the Promote Solution Pack.
- Any roles required to modify or execute the workflow (or workflows) that will be promoted must exist on the destination HPE DMA server.
- The HPE DMA user who runs the workflow should have READ permission on the promoted items.

How This Workflow Works

"Promote Workflow – Export" exports the specified workflow and related components from the HPE DMA server where you run the workflow (the source). It stores this information in a collection of XML files.

After you export a workflow, you can use "Promote Workflow – Import" to transfer this workflow (and specified related automation items) to a different HPE DMA server (the destination).

By using these two workflows together, you can promote a customized workflow and all its components from one HPE DMA server (the source) to another HPE DMA server (the destination) in a reliable and replicable manner. This is useful, for example, when you want to move a workflow from a test environment to a production environment.



Process Flow

The workflow exports the workflow and the related automation items from the HPE DMA source server, and stores this information in a collection of XML files in the Export Location.

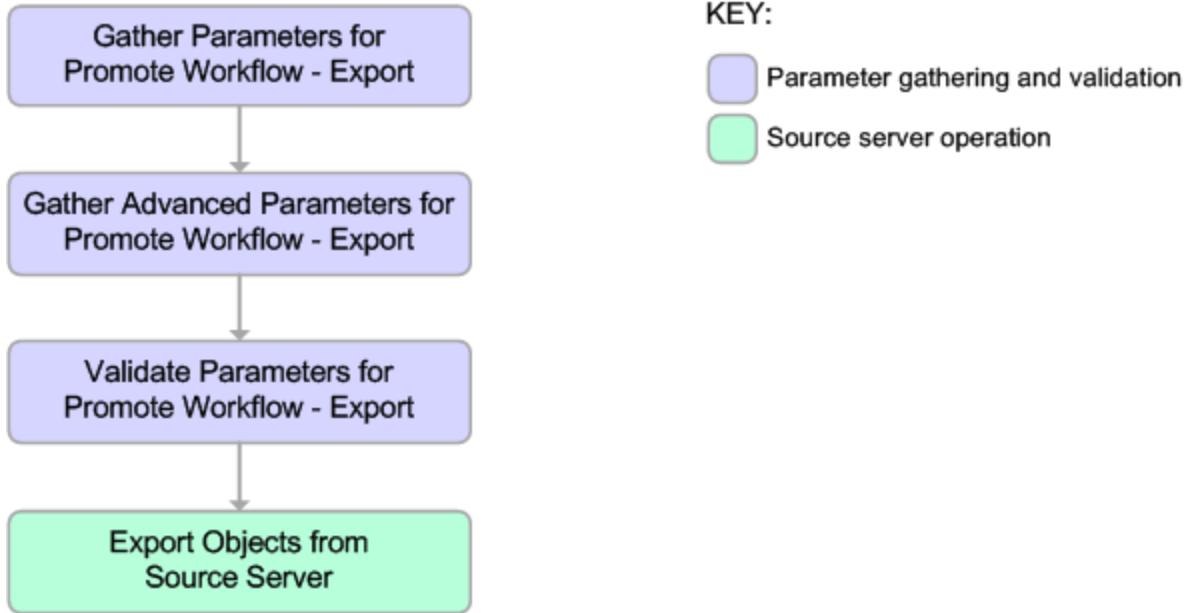
The export process creates the `promote_info.txt` file.

1. The workflow, itself
2. Steps used in the workflow
3. Functions referenced by steps used in the workflow
4. Deployments associated with the workflow
5. Policies associated with any promoted deployment
6. Smart Groups associated with any promoted deployment
7. Custom Fields that are referenced by the workflow, any promoted deployment, any promoted step, or any promoted Smart Group

Steps Executed

Promote Workflow – Export includes the following steps. Each step must complete successfully before the next step can start. If a step fails, the workflow reports a failure and all subsequent steps are skipped.

Click each box in the diagram to view additional information about that step.



Steps Used in Promote Workflow – Export

Workflow Step	Description
Gather Parameters for Promote Workflow – Export	Gets the name of the workflow to be promoted and Export Location. Sets the working directory/ZIP file.
Gather Advanced Parameters for Promote Workflow – Export	Gets the advanced optional parameter for this workflow: Export Zip Archive setting that specifies whether to export the workflow and related automation items as a ZIP archive or a sub-directory.
Validate Parameters for Promote Workflow – Export	Verifies the following things: <ul style="list-style-type: none"> • All required parameters have been specified. • The specified workflow exists on the source server, and the user has Read permission for that workflow.
Export Objects from Source Server	Exports the workflow and the related automation items from the HPE DMA source server, and stores this information in a collection of XML files in the working directory/ZIP file. Exports in the following order: <ol style="list-style-type: none"> 1. The workflow, itself 2. Steps used in the workflow 3. Functions referenced by steps used in the workflow 4. Deployments associated with the workflow 5. Policies associated with any promoted deployment 6. Smart Groups associated with any promoted deployment 7. Custom Fields that are referenced by the workflow, any promoted deployment, any promoted step, or any promoted Smart Group Creates the <code>promote_info.txt</code> file.

Note: For input parameter descriptions and defaults, see "[Parameters for Promote Workflow – Export](#)" on page 15.

How to Run This Workflow

The following instructions show you how to customize and run "Promote Workflow – Export" in your environment.

Note: Before following this procedure, review the "Prerequisites for this Workflow" on page 7, and ensure that all requirements are satisfied.

Tip: As a best practice, set the target for the deployment to the HPE DMA server where you run "Promote Workflow – Export".

To use the Promote Workflow – Export workflow:

1. On the HPE DMA server where you run the workflow, create a deployable copy of the workflow.
2. Determine the values that you will specify for the following parameters:

Input Parameters for Gather Parameters for Promote Workflow - Export

Parameter Name	Default Value	Required	Description
Export Location	no default	required	The location where the exported HPE DMA artifacts are stored. This can be either a fully qualified ZIP filename (default) or a fully qualified directory path—based on the advanced parameter Export Zip Archive. If it is a directory, a time-stamped sub-directory or ZIP file will be created to store the files. The location is on the target server.
Workflow Name	no default	required	Name of the workflow to be promoted.

3. Create a new deployment.
4. On the Parameters tab, specify values for the required parameters listed in step 2. You do not need to specify values for those parameters whose default values are appropriate for your environment.
5. On the Targets tab, specify a target for this deployment—where the exported workflow (and all related items) and the log files will be stored.

Tip: As a best practice, set the target to the HPE DMA source server where the workflow is exported from.

6. Save the deployment (click **Save** in the lower right corner).
7. Run the workflow using this deployment.

To verify the results:

The workflow will complete and report SUCCESS on the Console if it has run successfully. If an error occurs during workflow execution, the error is logged, and the workflow terminates in the FAILURE state.

Results of each step are logged on the Output tab for each step. You can access this information from the Console page while the workflow is running or the History page after it finishes running.

You can examine the `promote_info.txt` file to determine specific information about the export.

To use the exported workflow:

The collection of exported XML files enables you to create a gold master of your workflow, its deployments, custom fields, policies, and permissions. This can be used in conjunction with a revision control system to help manage your production workflows.

You can use the exported workflow in the following ways:

- You can copy the exported working directory/ZIP file to an Archive.
- You can copy the exported working directory/ZIP file to the target server and working directory/ZIP file that you will use when you run "[Promote Workflow – Import](#)" on the destination server.

Sample Scenario

This topic shows you how to use various parameters to achieve the following workflow export scenarios in your environment when using "[Promote Workflow – Export](#)".

Scenario 1: Export All Automation Items to a ZIP File

In this scenario, all deployments, Smart Groups, and Custom Fields that are referenced by the workflow (or any of its deployments) are exported. The XML files will be stored in the specified Export Location on the target server.

Example Parameter Values for Gather Parameters for Promote Workflow – Export

Parameter Name	Example	Description
Export Location	/Oracle Workflows/workflow123.zip	The location where the exported HPE DMA artifacts are stored. This can be either a fully qualified ZIP filename (default) or a fully qualified directory path—based on the advanced parameter Export Zip Archive. If it is a directory, a time-stamped sub-directory or ZIP file will be created to store the files. The location is on the target server.
Workflow Name	Run Oracle Compliance Check - CIS	Name of the workflow to be promoted.

Be sure that the default values for all remaining input parameters are appropriate for your environment (see "[Parameters for Promote Workflow – Export](#)" on page 15).

Scenario 2: Export All Automation Items to a Sub-Directory show

In this scenario, all deployments, Smart Groups, and Custom Fields that are referenced by the workflow (or any of its deployments) are exported. The XML files will be stored in the specified Export Location on the target server.

Example Parameter Values for Gather Parameters for Promote Workflow – Export

Parameter Name	Example	Description
Export Location	/Oracle Workflows	The location where the exported HPE DMA artifacts are stored. This can be either a fully qualified ZIP filename (default) or a fully qualified directory path—based on the advanced parameter Export Zip Archive. If it is a directory, a time-stamped sub-directory or ZIP file will be created to store the files. The location is on the target server.
Workflow Name	Run Oracle Compliance Check - CIS	Name of the workflow to be promoted.

The following parameter is not visible by default in a deployment. You need to expose it before you can use it.

Example Parameter Values for Gather Advanced Parameters for Promote Workflow – Export

Parameter Name	Example	Description
Export Zip Archive	NO	Flag to indicate whether the workflow (and related automation items) and log files are exported as a ZIP file. If set to YES or TRUE (the default), the files are exported to a ZIP file. If set to NO or FALSE, the files are exported to a time-stamped sub-directory of the Export Location.

Be sure that the default values for all remaining input parameters are appropriate for your environment (see ["Parameters for Promote Workflow – Export" on the next page](#)).

Parameters for Promote Workflow – Export

The following tables describe the required and optional input parameters for this workflow. For some parameters, if you do not specify a value for a parameter, a default value is assigned.

Input Parameters Defined in this Step: Gather Parameters for Promote Workflow – Export

Parameter Name	Default Value	Required	Description
Export Location	no default	required	The location where the exported HPE DMA artifacts are stored. This can be either a fully qualified ZIP filename (default) or a fully qualified directory path—based on the advanced parameter Export Zip Archive. If it is a directory, a time-stamped sub-directory or ZIP file will be created to store the files. The location is on the target server.
Workflow Name	no default	required	Name of the workflow to be promoted.

The following parameter is not visible by default in a deployment. You need to expose it before you can use it.

Additional Input Parameters Defined in this Step: Gather Advanced Parameters for Promote Workflow - Export

Parameter Name	Default Value	Required	Description
Filter Deployments	INCLUDE: Run Oracle Compliance Check - CIS - Linux Srvrs	Comma-separated list of deployments that will be exported from the source server. If this parameter is blank, all deployments associated with the specified workflow will be exported. Note: Maximum number of characters is 1000.	Filter Deployments

Promote Workflow – Import

To use this workflow in your environment, see the following information:

Topic	Information Included
"Prerequisites for this Workflow"	List of prerequisites that must be satisfied before you can run this workflow
"How This Workflow Works"	Information about what the workflow does, including validation checks performed, and steps executed
"How to Run This Workflow"	Instructions for running this workflow in your environment
"Sample Scenarios"	Examples of typical parameter values for this workflow
Parameters	List of input parameters for this workflow

The information presented here assumes the following:

- HPE DMA is installed and operational.
- At least one suitable target server is available.
- You are logged in to HPE DMA as a user with Workflow Creator (or Administrator) capability.
- You have Read and Execute permission for the organization that contains your target server.

Prerequisites for this Workflow

Be sure that the following prerequisites are satisfied before you run the ["Promote Workflow – Import"](#) workflow:

- You are using HPE Database and Middleware Automation version 10.40 (or later).
- You have installed the latest version of the Promote Solution Pack.
- Any roles required to modify or execute the workflow (or workflows) that will be promoted must exist on the destination HPE DMA server.
- The HPE DMA user who runs the workflow should have READ and WRITE permissions on the promoted objects.
- The HPE DMA user who runs the workflow must have Administrator capability.

Before you run ["Promote Workflow – Import"](#), you must have access to your exported workflow that was created when you ran either of the following:

- ["Promote Workflow – Export"](#)
- ["Promote Workflow – Export and Import"](#)

How This Workflow Works

"Promote Workflow – Import" copies a workflow and related automation items to the HPE DMA server where you run the workflow (the destination). This workflow consumes the collection of previously created XML files that contain the workflow and its related automation items.

Normally, you run "Promote Workflow – Export" before you run "Promote Workflow – Import" to produce the XML files.

By using these two workflows together, you can promote a customized workflow and all its components from one HPE DMA server (the source) to another HPE DMA server (the destination) in a reliable and replicable manner. This is useful, for example, when you want to move a workflow from a test environment to a production environment.



For a list of the specific items exported, see [What is Promoted](#).

Tip: You can use the preview mode to see what will be promoted to the destination server. In preview mode, no changes are made to the destination server.

Process Flow show

There are five phases included in the Promote Workflow - Import process flow.

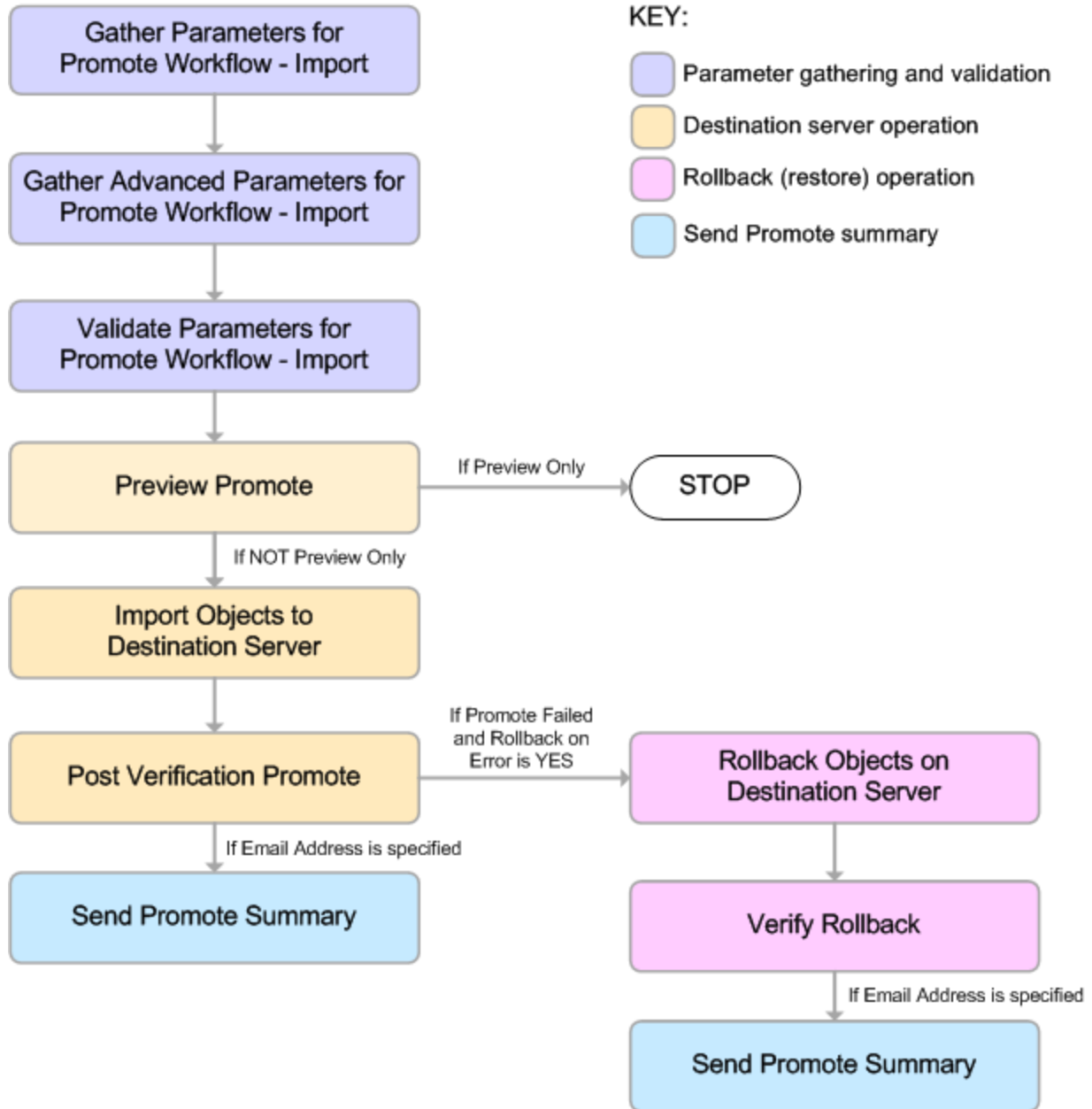
Phase	Purpose	Artifacts Created
1	Compare the XML files to the workflow on the destination server (if the workflow already exists there).	objects_to_promote.txt promote_summary.txt
2	Back up the workflow on the destination server (if the workflow already exists there).	Destination backup files
3	Import the workflow to the destination server.	none
4	Validate the promoted workflow on the destination server.	none
5	If the promotion failed or cannot be validated, roll back the original version of the workflow on the destination server.	none

Note: If the Preview Only parameter is set to YES, only Phase 1 in this process is performed.

Steps Executed show

Promote Workflow – Import includes the following steps. Each step must complete successfully before the next step can start. If a step fails, the workflow reports a failure and all subsequent steps are skipped.

Click each box in the diagram to view additional information about that step.



Steps Used in Promote Workflow - Import

Workflow Step	Description
Gather Parameters for Promote Workflow – Import	Gets the preview mode setting (whether the promote operation only previews the changes without updating the destination server), the roles, the Import Location, and the filters for Deployments, Policies, and Smart Groups to promote.
Gather Advanced Parameters for Promote Workflow – Import	Gets the advanced optional parameters: Email Address that specifies optional email addresses where a summary report will be sent, Ignore Platform Version setting that specifies whether to ignore a difference in the source server version and the destination server version, and Rollback on Error setting that tells HPE DMA what to do if the promote fails—if YES, rolls back the existing workflow (if any) on the destination server; if NO, does not roll back.
Validate Parameters for Promote Workflow – Import	<p>Verifies the following:</p> <ul style="list-style-type: none"> • All required parameters have been specified. • The specified role exists on the destination server. • The specified Import Location exists and contains the HPE DMA exported XML files. • The source server version matches the destination server version—unless Ignore Platform Version is YES.
Preview Promote	<p>The Preview Promote step looks for any conflicts that may arise as a result of the promote operation. The step reads each XML file in the working directory/ZIP file that contains an exported item (file name begins with <code>source_</code>) and performs the following checks:</p> <ul style="list-style-type: none"> • It determines which deployments, policies, and Smart Groups to promote based on the filter parameters: Filter Deployments, Filter Smart Groups, and Filter Policies. • It identifies any exported policy attributes or parameters that represent passwords and prints a warning to the step log indicating that these items must be manually configured on the destination server after the promote operation is completed. If the password exists on the destination, the value will be preserved. • It determines whether an item with the same name and target level (if applicable) as the exported item already exists on the destination server. <p>If an exported item exists on the destination server, the step compares the exported item to the destination item. The following summarizes the action taken based on the result of this comparison:</p> <p>Identical Item does not need to be imported to the destination server.</p> <p>Not identical The Preview Promote step logs a list of items that will be promoted in the file <code>objects_to_promote.txt</code> in the Import Location.</p> <p>Note: Locked items are not overwritten. If a step or function is locked and is different on the destination server, then the version of the solution pack used during the Promote export does not match the solution pack version on your destination server. The promote will fail.</p>

Steps Used in Promote Workflow - Import, continued

Workflow Step	Description
	<ul style="list-style-type: none"> • It lists any items on the destination server that have dependencies on the existing item in the step log. • It creates the file <code>objects_to_promote.txt</code> that contains the automation items that will be promoted. • It creates a Preview report (<code>promote_summary.txt</code>). The Preview report lists what will be promoted and describes what you need to do after running the Promote workflows such as setting up passwords and Custom Fields. <p>Note: If you are running the workflow in preview mode (parameter Preview Only is set to YES), the workflow stops after this step.</p>
Import Objects to Destination Server	<p>This step (and the following steps) are only executed if Preview Only is set to NO.</p> <p>Reads the XML files containing the exported workflow, backs up the workflow and the specified (filtered) related automation items, and then creates the items on the destination server.</p> <p>Caution: The workflow and automation items that previously existed on the destination server will be over-written.</p>
Post Verification Promote	<p>The Post Verification Promote step is executed after the workflow and all related items are imported to the destination server to ensure that the promote operation was successful. In this case, all source items and destination items should be identical. Items that are unique to the destination environment, such as passwords, are ignored.</p> <p>If this comparison determines that the promoted workflow and all related items match the source workflow, the workflow ends in with a Success state.</p> <p>If this comparison determines that the promoted workflow and all related items do not match the source workflow:</p> <ol style="list-style-type: none"> 1. If Rollback on Error is set to YES: The workflow runs the Rollback Objects on Destination Server and Verify Rollback steps. 2. The workflow ends in a Failure state.
Send Promote Summary	<p>If Email Address is specified, this step emails a Promote summary for the successful promotion.</p>
Rollback Objects on Destination Server	<p>This step is only executed if the promote operation fails and Rollback on Error is set to YES:</p> <ul style="list-style-type: none"> • If a previous version of the promoted workflow (or any related automation item) existed on the destination server prior to the promote operation: Deletes the promoted workflow (or related item) on the destination server, and restores the original workflow or related automation item to the item that was previously backed up (file names begin with <code>backup_</code>). • If no previous version of the promoted workflow (or any related automation item) existed on the destination server prior to the promote operation: The workflow (or related automation item) will be deleted from the destination server.

Steps Used in Promote Workflow - Import, continued

Workflow Step	Description
Verify Rollback	<p>The Verify Rollback step is only executed if a rollback is performed. For the workflow and all related automation items, the step checks the following:</p> <ul style="list-style-type: none">• If the item was rolled back, the restored item on the destination server should be identical to the version of that item that was previously backed up (file names begin with <code>backup_</code>).• If the item did not exist before the promotion, the item does not exist after the roll back.
Send Promote Summary	If Email Address is specified, this step emails a Promote summary after a rollback occurs.

Note: For input parameter descriptions and defaults, see "[Parameters for Promote Workflow – Import](#)" on page 32.

How to Run This Workflow

The following instructions show you how to customize and run "[Promote Workflow – Import](#)" in your environment. These instructions assume that all deployments, Smart Groups, and Custom Fields will be promoted.

Note: Before following this procedure, review the "[Prerequisites for this Workflow](#)" on page 17, and ensure that all requirements are satisfied.

Tip: As a best practice, set the target for the deployment to the HPE DMA server where you run "[Promote Workflow – Import](#)".

To use the Promote Workflow – Import workflow:

1. On the HPE DMA server where you run the workflow, create a deployable copy of the workflow.
2. Determine the values that you will specify for the following parameters: show

Input Parameters for Gather Parameters for Promote Workflow - Import

Parameter Name	Default Value	Required	Description
Filter Deployments	ALL	required	<p>A filter for deployments to be promoted. Valid values are ALL, NONE, INCLUDE: followed by a comma separated list of deployments to include, or EXCLUDE: followed by a comma separated list of deployments to exclude. The value ALL will promote all deployments associated with the workflow; the value NONE will not promote any of the deployments associated with the workflow.</p> <p>Note: Maximum number of characters is 1000.</p>
Filter Policies	ALL	required	<p>A filter for policies to be promoted. Valid values are ALL, NONE, INCLUDE: followed by a comma separated list of policies to include, or EXCLUDE: followed by a comma separated list of policies to exclude. The value ALL will promote all policies associated with the workflow; the value NONE will not promote any of the policies associated with the workflow.</p> <p>Note: Maximum number of characters is 1000.</p>
Filter Smart Groups	ALL	required	<p>A filter for Smart Groups to be promoted. Valid values are ALL, NONE, INCLUDE: followed by a comma separated list of Smart Groups to include, or EXCLUDE: followed by a comma separated list of Smart Groups to exclude. The value ALL will promote all Smart Groups associated with the workflow; the value NONE will not promote any of the Smart Groups associated with the workflow.</p> <p>Note: Maximum number of characters is 1000.</p>

Input Parameters for Gather Parameters for Promote Workflow - Import, continued

Parameter Name	Default Value	Required	Description								
Import Location	no default	required	The location where Promote Workflow – Import retrieves the exported HPE DMA workflow (and related automation items) and will store the backup files and other artifacts. This can be either a fully qualified ZIP filename or a fully qualified directory path. The location is on the target server.								
Preview Only	YES	required	If Preview Only is set to YES, the workflow will show you which items will be promoted, but it will not make any changes on the destination server. Valid values are YES/TRUE and NO/FALSE (case-insensitive).								
Roles on Destination Server	no default	required	<p>Comma-separated list of roles that will be assigned to promoted items. At least one role must be specified.</p> <p>All roles are assigned to the following promoted items (workflows, steps, deployments, and policies) that do not exist on the destination HPE DMA server prior to the promote operation. The roles specified for these promoted items are given full permissions:</p> <table border="0"> <tr> <td>Workflow</td> <td>READ, WRITE</td> </tr> <tr> <td>Step</td> <td>READ, WRITE</td> </tr> <tr> <td>Deployment</td> <td>READ, WRITE, EXECUTE</td> </tr> <tr> <td>Policy</td> <td>READ, WRITE</td> </tr> </table> <p>The <u>first</u> role specified in Roles on Destination Server is set in the Roles attribute for promoted Smart Groups that do not exist on the destination server prior to the promote operation.</p> <p>Role-based permissions for existing items are preserved.</p> <p>Note: If the roles do not yet exist on the destination server, you need to create them before attempting to promote.</p>	Workflow	READ, WRITE	Step	READ, WRITE	Deployment	READ, WRITE, EXECUTE	Policy	READ, WRITE
Workflow	READ, WRITE										
Step	READ, WRITE										
Deployment	READ, WRITE, EXECUTE										
Policy	READ, WRITE										

Note: This is the minimum set of parameters required to run this workflow. You may want to specify additional parameters depending on your objectives.

See "[Parameters for Promote Workflow – Import](#)" on page 32 for detailed descriptions of all input parameters for this workflow, including default values.

3. Create a new deployment.
4. On the Parameters tab, specify values for the required parameters listed in step 2. You do not need to specify values for those parameters whose default values are appropriate for your environment.
5. On the Targets tab, specify a target for this deployment—where the exported workflow (and all related items) and the log files are stored.

Tip: As a best practice, copy the exported working directory/ZIP file to the HPE DMA server where you run the workflow (the destination) and set the target to the HPE DMA to the same server.

6. Save the deployment (click **Save** in the lower right corner).
7. Run the workflow using this deployment.

To verify the results:

The workflow will complete and report SUCCESS on the Console if it has run successfully. If an error occurs during workflow execution, the error is logged, and the workflow terminates in the FAILURE state.

Results of each step are logged on the Output tab for each step. You can access this information from the Console page while the workflow is running or the History page after it finishes running.

Tip: Examine the Output tab for any dependencies (for example, other workflows that use the promoted steps or functions) and decide if any other promotions are desired.

You should examine the Preview report in file `promote_summary.txt` to determine what objects were promoted and exactly what needs to be customized on the destination server.

To track the history of promoted items on the destination server:

You can track the history of promoted workflows, steps, and functions using the history tab:

Promoted Item	How to Access	Description
Workflow	Automation > Workflows > <i><promoted_workflow></i> > History	Date: <i><date_time_of_promotion></i> Person: <i><user_that_promoted_workflow></i> Source: REST API Comment: Promoted using " <i><promote_workflow_that_imported_item></i> " from DMA server <i><server_name></i>
Step	Automation > Steps > <i><promoted_step></i> > History	Date: <i><date_time_of_promotion></i> Person: <i><user_that_promoted_step></i> Source: REST API Comment: Promoted with " <i><promoted_workflow></i> "
Function	Automation > Functions > <i><promoted_function></i> > History	Date: <i><date_time_of_promotion></i> Person: <i><user_that_promoted_function></i> Source: REST API Comment: Promoted with " <i><promoted_workflow></i> "

To use the promoted workflow on the destination server:

Before you run the newly promoted workflow, use the Preview report (file `promote_summary.txt`) to customize the following on the destination server:

- Password values
- Custom Field values

Set up the environment on the destination server:

- Environments: organizations, servers, instances, and databases
- Targets for deployments

Sample Scenarios

This topic shows you how to use various parameters to achieve the following workflow promotion scenarios in your environment when using "[Promote Workflow – Import](#)".

Scenario 1: Preview All Automation Items but Do Not Import show

In this scenario, all automation items for the specified workflow that are stored in Import Location are previewed. They are not created or updated on the destination server.

In this scenario, Preview Only is enabled by default.

In this scenario, Rollback on Error is enabled by default. The workflow and any related items that existed on the destination server prior to the promote operation will be restored in the event that the promote fails.

Example Parameter Values for Gather Parameters for Promote Workflow – Import

Parameter Name	Example	Description								
Import Location	/Oracle Workflows/workflow123.zip	The location where Promote Workflow – Import retrieves the exported HPE DMA workflow (and related automation items) and will store the backup files and other artifacts. This can be either a fully qualified ZIP filename or a fully qualified directory path. The location is on the target server.								
Roles on Destination Server	DMA Admins	<p>Comma-separated list of roles that will be assigned to promoted items. At least one role must be specified.</p> <p>All roles are assigned to the following promoted items (workflows, steps, deployments, and policies) that do not exist on the destination HPE DMA server prior to the promote operation. The roles specified for these promoted items are given full permissions:</p> <table border="0"> <tr> <td>Workflow</td> <td>READ, WRITE</td> </tr> <tr> <td>Step</td> <td>READ, WRITE</td> </tr> <tr> <td>Deployment</td> <td>READ, WRITE, EXECUTE</td> </tr> <tr> <td>Policy</td> <td>READ, WRITE</td> </tr> </table> <p>The <u>first</u> role specified in Roles on Destination Server is set in the Roles attribute for promoted Smart Groups that do not exist on the destination server prior to the promote operation.</p> <p>Role-based permissions for existing items are preserved.</p> <p>Note: If the roles do not yet exist on the destination server, you need to create them before attempting to promote.</p>	Workflow	READ, WRITE	Step	READ, WRITE	Deployment	READ, WRITE, EXECUTE	Policy	READ, WRITE
Workflow	READ, WRITE									
Step	READ, WRITE									
Deployment	READ, WRITE, EXECUTE									
Policy	READ, WRITE									

Be sure that the default values for all remaining input parameters are appropriate for your environment (see "[Parameters for Promote Workflow – Import](#)" on page 32).

Scenario 2: Import All Automation Items show

In this scenario, all automation items for the specified workflow that are stored in Import Location are created or updated on the destination server. The Database Compliance summary report will be emailed to a recipient.

In this scenario, Rollback on Error is enabled by default. The workflow and any related items that existed on the destination server prior to the promote operation will be restored in the event that the promote fails.

Example Parameter Values for Gather Parameters for Promote Workflow – Import

Parameter Name	Example	Description								
Import Location	/Oracle Workflows/workflow123.zip	The location where Promote Workflow – Import retrieves the exported HPE DMA workflow (and related automation items) and will store the backup files and other artifacts. This can be either a fully qualified ZIP filename or a fully qualified directory path. The location is on the target server.								
Preview Only	NO	If Preview Only is set to YES, the workflow will show you which items will be promoted, but it will not make any changes on the destination server. Valid values are YES/TRUE and NO/FALSE (case-insensitive).								
Roles on Destination Server	DMA Admins	<p>Comma-separated list of roles that will be assigned to promoted items. At least one role must be specified.</p> <p>All roles are assigned to the following promoted items (workflows, steps, deployments, and policies) that do not exist on the destination HPE DMA server prior to the promote operation. The roles specified for these promoted items are given full permissions:</p> <table border="0"> <tr> <td>Workflow</td> <td>READ, WRITE</td> </tr> <tr> <td>Step</td> <td>READ, WRITE</td> </tr> <tr> <td>Deployment</td> <td>READ, WRITE, EXECUTE</td> </tr> <tr> <td>Policy</td> <td>READ, WRITE</td> </tr> </table> <p>The <u>first</u> role specified in Roles on Destination Server is set in the Roles attribute for promoted Smart Groups that do not exist on the destination server prior to the promote operation.</p> <p>Role-based permissions for existing items are preserved.</p> <p>Note: If the roles do not yet exist on the destination server, you need to create them before attempting to promote.</p>	Workflow	READ, WRITE	Step	READ, WRITE	Deployment	READ, WRITE, EXECUTE	Policy	READ, WRITE
Workflow	READ, WRITE									
Step	READ, WRITE									
Deployment	READ, WRITE, EXECUTE									
Policy	READ, WRITE									

The following parameter is not visible by default in a deployment. You need to expose it before you can use it.

Example Parameter Values for Gather Advanced Parameters for Promote Workflow - Import

Parameter Name	Example	Description
Email Address	JohnDoe@mycompany.com	Comma separated list of email addresses where the Database Compliance summary report will be sent.

Be sure that the default values for all remaining input parameters are appropriate for your environment (see ["Parameters for Promote Workflow – Import" on page 32](#)).

Scenario 3: Import Only a Subset of Deployments, Policies, and Smart Groups show

In this scenario, the deployments, policies, and Smart Groups to be promoted are specifically included or excluded.

- **Included objects:** Provided that these objects are referenced by the specified workflow or one (or more) of its deployments, the objects will be created or updated on the destination server. Any objects that are not explicitly specified will be not be promoted.
- **Excluded objects:** All objects that are not in the exclude list and are referenced by the specified workflow or one (or more) of its deployments, the objects will be created or updated on the destination server.

In this scenario, Preview Only is set to NO.

In this scenario, Rollback on Error is enabled by default. The workflow and any related items that existed on the destination server prior to the promote operation will be restored in the event that the promote fails.

Example Parameter Values for Gather Parameters for Promote Workflow – Import

Parameter Name	Example	Description
Filter Deployments	INCLUDE: Run Oracle Compliance Check - CIS - Linux Srvrs	A filter for deployments to be promoted. Valid values are ALL, NONE, INCLUDE: followed by a comma separated list of deployments to include, or EXCLUDE: followed by a comma separated list of deployments to exclude. The value ALL will promote all deployments associated with the workflow; the value NONE will not promote any of the deployments associated with the workflow. Note: Maximum number of characters is 1000.
Filter Policies	EXCLUDE: Oracle Test Compliance	A filter for policies to be promoted. Valid values are ALL, NONE, INCLUDE: followed by a comma separated list of policies to include, or EXCLUDE: followed by a comma separated list of policies to exclude. The value ALL will promote all policies associated with the workflow; the value NONE will not promote any of the policies associated with the workflow. Note: Maximum number of characters is 1000.
Filter Smart Groups	INCLUDE: Linux Srvrs, Europe Srvrs	A filter for Smart Groups to be promoted. Valid values are ALL, NONE, INCLUDE: followed by a comma separated list of Smart Groups to include, or EXCLUDE: followed by a comma separated list of Smart Groups to exclude. The value ALL will promote all Smart Groups associated with the workflow; the value NONE will not promote any of the Smart Groups associated with the workflow. Note: Maximum number of characters is 1000.
Import Location	/Oracle Workflows/workflow123.zip	The location where Promote Workflow – Import retrieves the exported HPE DMA workflow (and related automation items) and will store the backup files and other artifacts. This can be either a fully qualified ZIP filename or a fully qualified directory path. The location is on the target server.

Example Parameter Values for Gather Parameters for Promote Workflow – Import, continued

Parameter Name	Example	Description								
Preview Only	NO	If Preview Only is set to YES, the workflow will show you which items will be promoted, but it will not make any changes on the destination server. Valid values are YES/TRUE and NO/FALSE (case-insensitive).								
Roles on Destination Server	DMA Admins	<p>Comma-separated list of roles that will be assigned to promoted items. At least one role must be specified.</p> <p>All roles are assigned to the following promoted items (workflows, steps, deployments, and policies) that do not exist on the destination HPE DMA server prior to the promote operation. The roles specified for these promoted items are given full permissions:</p> <table border="0"> <tr> <td>Workflow</td> <td>READ, WRITE</td> </tr> <tr> <td>Step</td> <td>READ, WRITE</td> </tr> <tr> <td>Deployment</td> <td>READ, WRITE, EXECUTE</td> </tr> <tr> <td>Policy</td> <td>READ, WRITE</td> </tr> </table> <p>The <u>first</u> role specified in Roles on Destination Server is set in the Roles attribute for promoted Smart Groups that do not exist on the destination server prior to the promote operation.</p> <p>Role-based permissions for existing items are preserved.</p> <p>Note: If the roles do not yet exist on the destination server, you need to create them before attempting to promote.</p>	Workflow	READ, WRITE	Step	READ, WRITE	Deployment	READ, WRITE, EXECUTE	Policy	READ, WRITE
Workflow	READ, WRITE									
Step	READ, WRITE									
Deployment	READ, WRITE, EXECUTE									
Policy	READ, WRITE									

Be sure that the default values for all remaining input parameters are appropriate for your environment (see ["Parameters for Promote Workflow – Import" on the next page](#)).

Parameters for Promote Workflow – Import

The following tables describe the required and optional input parameters for this workflow. For some parameters, if you do not specify a value for a parameter, a default value is assigned.

Input Parameters Defined in this Step: Gather Parameters for Promote Workflow - Import

Parameter Name	Default Value	Required	Description
Filter Deployments	ALL	required	<p>A filter for deployments to be promoted. Valid values are ALL, NONE, INCLUDE: followed by a comma separated list of deployments to include, or EXCLUDE: followed by a comma separated list of deployments to exclude. The value ALL will promote all deployments associated with the workflow; the value NONE will not promote any of the deployments associated with the workflow.</p> <p>Note: Maximum number of characters is 1000.</p>
Filter Policies	ALL	required	<p>A filter for policies to be promoted. Valid values are ALL, NONE, INCLUDE: followed by a comma separated list of policies to include, or EXCLUDE: followed by a comma separated list of policies to exclude. The value ALL will promote all policies associated with the workflow; the value NONE will not promote any of the policies associated with the workflow.</p> <p>Note: Maximum number of characters is 1000.</p>
Filter Smart Groups	ALL	required	<p>A filter for Smart Groups to be promoted. Valid values are ALL, NONE, INCLUDE: followed by a comma separated list of Smart Groups to include, or EXCLUDE: followed by a comma separated list of Smart Groups to exclude. The value ALL will promote all Smart Groups associated with the workflow; the value NONE will not promote any of the Smart Groups associated with the workflow.</p> <p>Note: Maximum number of characters is 1000.</p>
Import Location	no default	required	<p>The location where Promote Workflow – Import retrieves the exported HPE DMA workflow (and related automation items) and will store the backup files and other artifacts. This can be either a fully qualified ZIP filename or a fully qualified directory path. The location is on the target server.</p>
Preview Only	YES	required	<p>If Preview Only is set to YES, the workflow will show you which items will be promoted, but it will not make any changes on the destination server. Valid values are YES/TRUE and NO/FALSE (case-insensitive).</p>
Roles on	no	required	<p>Comma-separated list of roles that will be assigned to promoted</p>

Input Parameters Defined in this Step: Gather Parameters for Promote Workflow - Import, continued

Parameter Name	Default Value	Required	Description								
Destination Server	default		<p>items. At least one role must be specified.</p> <p>All roles are assigned to the following promoted items (workflows, steps, deployments, and policies) that do not exist on the destination HPE DMA server prior to the promote operation. The roles specified for these promoted items are given full permissions:</p> <table border="0"> <tr> <td>Workflow</td> <td>READ, WRITE</td> </tr> <tr> <td>Step</td> <td>READ, WRITE</td> </tr> <tr> <td>Deployment</td> <td>READ, WRITE, EXECUTE</td> </tr> <tr> <td>Policy</td> <td>READ, WRITE</td> </tr> </table> <p>The <u>first</u> role specified in Roles on Destination Server is set in the Roles attribute for promoted Smart Groups that do not exist on the destination server prior to the promote operation.</p> <p>Role-based permissions for existing items are preserved.</p> <p>Note: If the roles do not yet exist on the destination server, you need to create them before attempting to promote.</p>	Workflow	READ, WRITE	Step	READ, WRITE	Deployment	READ, WRITE, EXECUTE	Policy	READ, WRITE
Workflow	READ, WRITE										
Step	READ, WRITE										
Deployment	READ, WRITE, EXECUTE										
Policy	READ, WRITE										

The following parameters are not visible by default in a deployment. You need to expose them before you can use them.

Additional Input Parameters Defined in this Step: Gather Advanced Parameters for Promote Workflow - Import

Parameter Name	Default Value	Required	Description
Email Address	no default	optional	Comma separated list of email addresses where the Database Compliance summary report will be sent.
Ignore Platform Version	NO	optional	<p>If set to NO (default), the Database Compliance workflows check that the source and destination HPE DMA platform versions are the same. If set to YES, the Database Compliance workflows ignore different HPE DMA platform versions and will attempt to promote the workflow anyway. Valid values are YES/TRUE and NO/FALSE (case-insensitive).</p> <p>Caution: Promote does not officially support promoting between different versions. Use at your own risk.</p>
Rollback on Error	YES	optional	Set to NO if you do NOT want HPE DMA to rollback the workflow and all related items on the destination server to their original state in the event that the promote operation fails. Valid values are YES/TRUE and NO/FALSE (case-insensitive).

Promote Workflow – Export and Import

The Promote Workflow workflow enables you to promote (copy) a customized workflow and all related items from one HPE DMA server (the source) to another HPE DMA server (the destination) in a reliable and replicable manner. This is useful, for example, when you want to move a workflow from a test environment to a production environment.



The functionality is the same as running the "Promote Workflow – Export" workflow followed by running the "Promote Workflow – Import" workflow.



Note: This workflow requires that the SSL certificates are configured the same on the two servers. The `com.hp.dma.conn.trustAllCertificates` parameter in both servers' `dma.xml` files must have the same values. If the HPE DMA source server does not trust all SSL certificates but the HPE DMA destination server does, then you need to first run "Promote Workflow – Export", and then run "Promote Workflow – Import".

To run the Database Compliance workflow, use the information found in the following workflows:

- "Promote Workflow – Export"
- "Promote Workflow – Import"

Tip: You can use the preview mode to see what will be copied to the destination server. In preview mode, no changes are made to the destination server.

Process Flow show

1. Export Process

First, the workflow exports the specified workflow and the related automation items from the HPE DMA source server, and stores this information in a collection of XML files in the Export Location.

The export process creates the `promote_info.txt` file.

2. Import Process

After the workflow exports the specified workflow and the related automation items to a collection of XML files, the workflow imports them to the destination server. There are five phases included in the import process flow.

Phase	Purpose	Artifacts Created
1	Compare the XML files to the workflow on the destination server (if the workflow already exists there).	objects_to_promote.txt promote_summary.txt
2	Back up the workflow on the destination server (if the workflow already exists there).	Destination backup files
3	Import the workflow to the destination server.	
4	Validate the promoted workflow on the destination server.	none
5	If the promotion failed or cannot be validated, roll back the original version of the workflow on the destination server.	none

Note: If the Preview Only parameter is set to YES, only Phase 1 in this process is performed.

To use this workflow in your environment, see the following information:

Topic	Information Included
"Prerequisites for this Workflow"	List of prerequisites that must be satisfied before you can run this workflow
"How This Workflow Works"	Information about what the workflow does, including validation checks performed, and steps executed
"How to Run This Workflow"	Instructions for running this workflow in your environment
"Sample Scenarios"	Examples of typical parameter values for this workflow
Parameters	List of input parameters for this workflow

The information presented here assumes the following:

- HPE DMA is installed and operational.

- At least one suitable target server is available.
- You are logged in to HPE DMA as a user with Workflow Creator (or Administrator) capability.
- You have Read and Execute permission for the organization that contains your target server.

Prerequisites for this Workflow

Be sure that the following prerequisites are satisfied before you run "[Promote Workflow – Export and Import](#)":

- You are using HPE Database and Middleware Automation version 10.40 (or later).
- You have installed the latest version of the Database Compliance Solution Pack.
- Any roles required to modify or execute the workflow (or workflows) that will be promoted must exist on the destination HPE DMA server.
- The HPE DMA user who runs the workflow should have READ and WRITE permissions on the promoted objects.
- The HPE DMA user specified in the Destination DMA Username parameter must have Administrator capability.

How This Workflow Works

"Promote Workflow – Export and Import" enables you to copy a customized workflow and all related items from the HPE DMA server where you run the workflow (the source) to another HPE DMA server (the destination) in a reliable and replicable manner. This is useful, for example, when you want to move a workflow from a development environment to a developer's test environment where no proxy exists between the two environments.



Tip: You can use the preview mode to see what will be copied to the destination server. In preview mode, no changes are made to the destination server.

Process Flow show

1. Export Process

First, the workflow exports the specified workflow and the related automation items from the HPE DMA source server, and stores this information in a collection of XML files in the Export Location.

The export process creates the `promote_info.txt` file.

2. Import Process

After the workflow exports the specified workflow and the related automation items to a collection of XML files, the workflow imports them to the destination server. There are five phases included in the import process flow.

Phase	Purpose	Artifacts Created
1	Compare the XML files to the workflow on the destination server (if the workflow already exists there).	objects_to_promote.txt promote_summary.txt
2	Back up the workflow on the destination server (if the workflow already exists there).	Destination backup files
3	Import the workflow to the destination server.	none

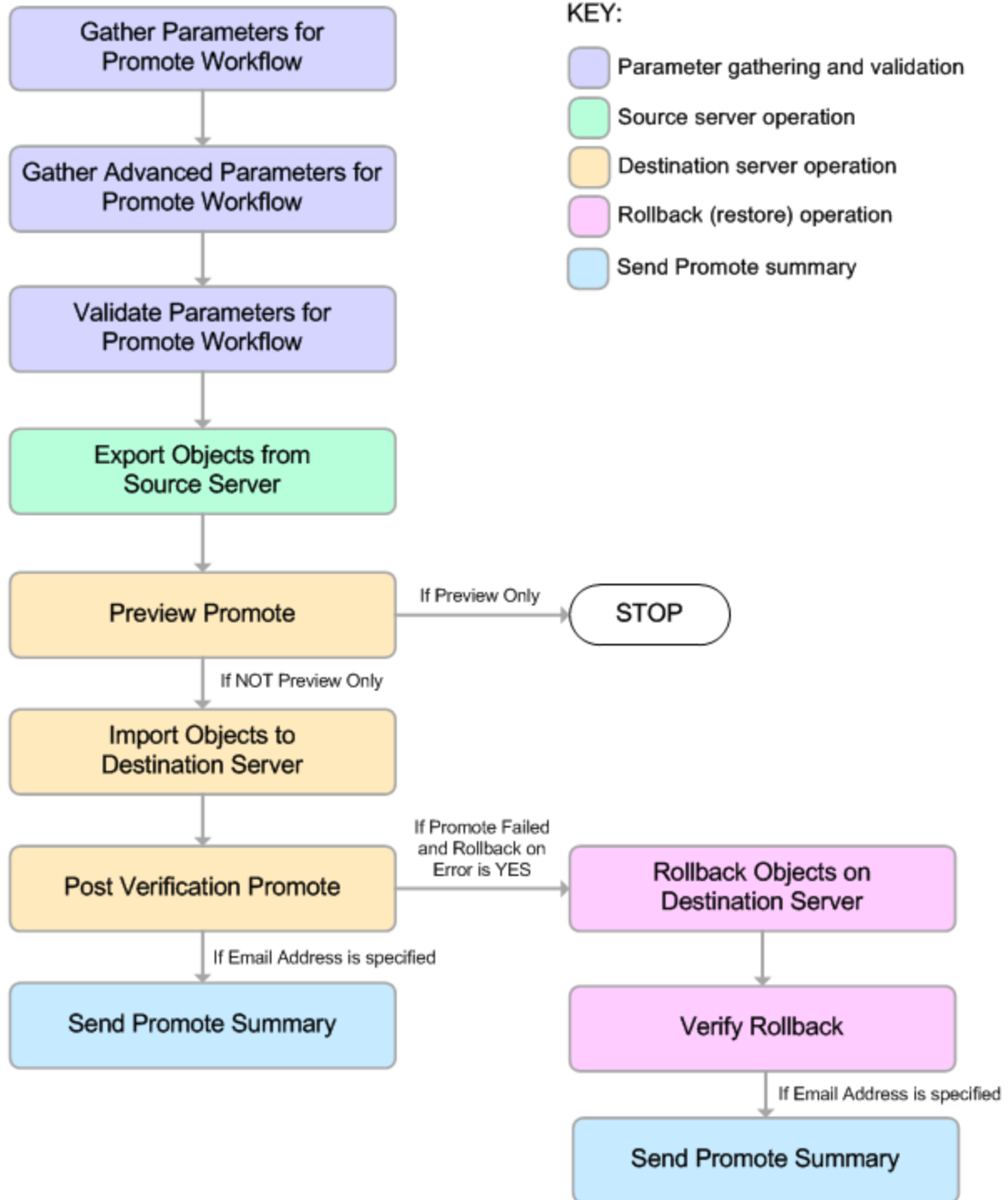
Phase	Purpose	Artifacts Created
4	Validate the promoted workflow on the destination server.	none
5	If the promotion failed or cannot be validated, roll back the original version of the workflow on the destination server.	none

Note: If the Preview Only parameter is set to YES, only Phase 1 in this process is performed.

Steps Executed show

Promote Workflow - Export and Import includes the following steps. Each step must complete successfully before the next step can start. If a step fails, the workflow reports a failure and all subsequent steps are skipped.

Click each box in the diagram to view additional information about that step.



Steps Used in Promote Workflow - Export and Import

Workflow Step	Description
Gather Parameters for Promote Workflow	Gets the destination server information, whether the workflow is to run in preview mode (without updating the destination server), the roles, the name of the workflow to be promoted, and the filters for Deployments, Policies, and Smart Groups to promote. Sets the working directory/ZIP file.
Gather Advanced Parameters for Promote Workflow	Gets the advanced optional parameters: Email Address that specifies optional email addresses where a summary report will be sent, Export Zip Archive setting that specifies whether to export the workflow and related automation items as a ZIP archive or a sub-directory, Ignore Platform Version setting that specifies whether to ignore a difference in the source server version and the destination server version, and Rollback on Error setting that tells HPE DMA what to do if the promote fails—if YES, rolls back the existing workflow (if any) on the destination server; if NO, does not roll back.
Validate Parameters for Promote Workflow	<p>Verifies the following:</p> <ul style="list-style-type: none"> • All required parameters have been specified. • HPE DMA can communicate with the specified destination server. • The specified workflow exists on the source server. • The specified roles exist on the destination server. • The source server version matches the destination server version—unless Ignore Platform Version is YES.
Export Objects from Source Server	<p>Exports the workflow and the related automation items from the HPE DMA source server, and stores this information in a collection of XML files in the working directory/ZIP file. Exports in the following order:</p> <ol style="list-style-type: none"> 1. The workflow, itself 2. Steps used in the workflow 3. Functions referenced by steps used in the workflow 4. Deployments associated with the workflow 5. Policies associated with any promoted deployment 6. Smart Groups associated with any promoted deployment 7. Custom Fields that are referenced by the workflow, any promoted deployment, any promoted step, or any promoted Smart Group <p>Creates the <code>promote_info.txt</code> file.</p>
Preview Promote	<p>The Preview Promote step looks for any conflicts that may arise as a result of the promote operation. The step reads each XML file in the working directory/ZIP file that contains an exported item (file name begins with <code>source_</code>) and performs the following checks:</p> <ul style="list-style-type: none"> • It determines which deployments, policies, and Smart Groups to promote based on the filter parameters: Filter Deployments, Filter Smart Groups, and Filter Policies. • It identifies any exported policy attributes or parameters that represent passwords and prints a warning to the step log indicating that these items must be manually configured on the destination server after the promote operation is completed. If the password exists on the destination, the value will be preserved.

Steps Used in Promote Workflow - Export and Import, continued

Workflow Step	Description
	<ul style="list-style-type: none"> It determines whether an item with the same name and target level (if applicable) as the exported item already exists on the destination server. <p>If an exported item exists on the destination server, the step compares the exported item to the destination item. The following summarizes the action taken based on the result of this comparison:</p> <p>Identical Item does not need to be imported to the destination server.</p> <p>Not identical The Preview Promote step logs a list of items that will be promoted in the file <code>objects_to_promote.txt</code> in the Import Location.</p> <p>Note: Locked items are not overwritten. If a step or function is locked and is different on the destination server, then the version of the solution pack used during the Promote export does not match the solution pack version on your destination server. The promote will fail.</p> <ul style="list-style-type: none"> It lists any items on the destination server that have dependencies on the existing item in the step log. It creates the file <code>objects_to_promote.txt</code> that contains the automation items that will be promoted. It creates a Preview report (<code>promote_summary.txt</code>). The Preview report lists what will be promoted and describes what you need to do after running the Database Compliance workflows such as setting up passwords and Custom Fields. <p>Note: If you are running the workflow in preview mode (parameter Preview Only is set to YES), the workflow stops after this step.</p>
Import Objects to Destination Server	<p>This step (and the following steps) are only executed if Preview Only is set to NO.</p> <p>Reads the XML files containing the exported workflow, backs up the workflow and the specified (filtered) related automation items, and then creates the items on the destination server.</p> <p>Caution: The workflow and automation items that previously existed on the destination server will be over-written.</p>
Post Verification Promote	<p>The Post Verification Promote step is executed after the workflow and all related items are imported to the destination server to ensure that the promote operation was successful. In this case, all source items and destination items should be identical. Items that are unique to the destination environment, such as passwords, are ignored.</p> <p>If this comparison determines that the promoted workflow and all related items match the source workflow, the workflow ends in with a Success state.</p> <p>If this comparison determines that the promoted workflow and all related items do not match the source workflow:</p> <ol style="list-style-type: none"> If Rollback on Error is set to YES: The workflow runs the Rollback Objects on

Steps Used in Promote Workflow - Export and Import, continued

Workflow Step	Description
	Destination Server and Verify Rollback steps. 2. The workflow ends in a Failure state.
Rollback Objects on Destination Server	This step is only executed if the promote operation fails and Rollback on Error is set to YES: <ul style="list-style-type: none"> • If a previous version of the promoted workflow (or any related automation item) existed on the destination server prior to the promote operation: Deletes the promoted workflow (or related item) on the destination server, and restores the original workflow or related automation item to the item that was previously backed up (file names begin with backup_). • If no previous version of the promoted workflow (or any related automation item) existed on the destination server prior to the promote operation: The workflow (or related automation item) will be deleted from the destination server.
Verify Rollback	The Verify Rollback step is only executed if a rollback is performed. For the workflow and all related automation items, the step checks the following: <ul style="list-style-type: none"> • If the item was rolled back, the restored item on the destination server should be identical to the version of that item that was previously backed up (file names begin with backup_). • If the item did not exist before the promotion, the item does not exist after the roll back.

Note: For input parameter descriptions and defaults, see "[Parameters for Promote Workflow - Export and Import](#)" on page 54.

How to Run This Workflow

The following instructions show you how to run "[Promote Workflow – Export and Import](#)" in your environment. These instructions assume that all deployments, Smart Groups, and Custom Fields will be promoted.

Note: Before following this procedure, review the "[Prerequisites for this Workflow](#)" on page 37, and ensure that all requirements are satisfied.

Tip: As a best practice, set the target for the deployment to the HPE DMA server where you run "[Promote Workflow – Export and Import](#)", the same as the source server from which you are exporting the workflow and related automation.

To use the Promote Workflow workflow:

1. On the HPE DMA server where you run the workflow, create a deployable copy of the workflow.
2. Determine the values that you will specify for the following parameters:

Input Parameters for Gather Parameters for Promote Workflow

Parameter Name	Default Value	Required	Description
Destination DMA Password	no default	required	Password for the user specified in the Destination DMA Username parameter.
Destination DMA URL	no default	required	URL for the destination HPE DMA server. For example: <code>https://dma2.mycompany.com:8443/dma</code>
Destination DMA Username	no default	required	HPE DMA user who will perform the promote operation on the destination server.
Export Location	no default	required	The location where the exported HPE DMA artifacts are stored. This can be either a fully qualified ZIP filename (default) or a fully qualified directory path—based on the advanced parameter Export Zip Archive. If it is a directory, a time-stamped sub-directory or ZIP file will be created to store the files. The location is on the target server.
Filter Deployments	ALL	required	A filter for deployments to be promoted. Valid values are ALL, NONE, INCLUDE: followed by a comma separated list of deployments to include, or EXCLUDE: followed by a comma separated list of deployments to exclude. The value ALL will promote all deployments associated with the workflow; the value NONE will not promote any of the deployments associated with the workflow.

Note: Maximum number of characters is 1000.

Input Parameters for Gather Parameters for Promote Workflow , continued

Parameter Name	Default Value	Required	Description								
Filter Policies	ALL	required	<p>A filter for policies to be promoted. Valid values are ALL, NONE, INCLUDE: followed by a comma separated list of policies to include, or EXCLUDE: followed by a comma separated list of policies to exclude. The value ALL will promote all policies associated with the workflow; the value NONE will not promote any of the policies associated with the workflow.</p> <p>Note: Maximum number of characters is 1000.</p>								
Preview Only	YES	required	<p>If Preview Only is set to YES, the workflow will show you which items will be promoted, but it will not make any changes on the destination server. Valid values are YES/TRUE and NO/FALSE (case-insensitive).</p>								
Filter Smart Groups	ALL	required	<p>A filter for Smart Groups to be promoted. Valid values are ALL, NONE, INCLUDE: followed by a comma separated list of Smart Groups to include, or EXCLUDE: followed by a comma separated list of Smart Groups to exclude. The value ALL will promote all Smart Groups associated with the workflow; the value NONE will not promote any of the Smart Groups associated with the workflow.</p> <p>Note: Maximum number of characters is 1000.</p>								
Roles on Destination Server	no default	required	<p>Comma-separated list of roles that will be assigned to promoted items. At least one role must be specified.</p> <p>All roles are assigned to the following promoted items (workflows, steps, deployments, and policies) that do not exist on the destination HPE DMA server prior to the promote operation. The roles specified for these promoted items are given full permissions:</p> <table border="0"> <tr> <td>Workflow</td> <td>READ, WRITE</td> </tr> <tr> <td>Step</td> <td>READ, WRITE</td> </tr> <tr> <td>Deployment</td> <td>READ, WRITE, EXECUTE</td> </tr> <tr> <td>Policy</td> <td>READ, WRITE</td> </tr> </table> <p>The <u>first</u> role specified in Roles on Destination Server is set in the Roles attribute for promoted Smart Groups that do not exist on the destination server prior to the promote operation.</p> <p>Role-based permissions for existing items are preserved.</p> <p>Note: If the roles do not yet exist on the destination server, you need to create them before attempting to promote.</p>	Workflow	READ, WRITE	Step	READ, WRITE	Deployment	READ, WRITE, EXECUTE	Policy	READ, WRITE
Workflow	READ, WRITE										
Step	READ, WRITE										
Deployment	READ, WRITE, EXECUTE										
Policy	READ, WRITE										

Input Parameters for Gather Parameters for Promote Workflow , continued

Parameter Name	Default Value	Required	Description
Workflow Name	no default	required	Name of the workflow to be promoted.

Note: This is the minimum set of parameters required to run this workflow. You may want to specify other parameters depending on your objectives.

See "[Parameters for Promote Workflow - Export and Import](#)" on page 54 for detailed descriptions of all input parameters for this workflow, including default values.

3. Create a new deployment.
4. On the Parameters tab, specify values for the required parameters listed in step 2. You do not need to specify values for those parameters whose default values are appropriate for your environment.
5. On the Targets tab, specify a target for this deployment—where the exported workflow (and all related items) and the log files will be stored.

Tip: As a best practice, set the target to the HPE DMA source server where the workflow is exported from.

6. Save the deployment (click **Save** in the lower right corner).
7. Run the workflow using this deployment.

To verify the results:

The workflow will complete and report SUCCESS on the Console if it has run successfully. If an error occurs during workflow execution, the error is logged, and the workflow terminates in the FAILURE state.

Results of each step are logged on the Output tab for each step. You can access this information from the Console page while the workflow is running or the History page after it finishes running.

Tip: Examine the Output tab for any dependencies (for example, other workflows that use the promoted steps or functions) and decide if any other promotions are desired.

You should examine the Preview report in file `promote_summary.txt` to determine what objects were promoted and exactly what needs to be customized on the destination server.

To track the history of promoted items on the destination server:

You can track the history of promoted workflows, steps, and functions using the history tab:

Promoted Item	How to Access	Description
Workflow	Automation > Workflows > <i><promoted_workflow></i> > History	Date: <i><date_time_of_promotion></i> Person: <i><user_that_promoted_workflow></i> Source: REST API Comment: Promoted using " <i><promote_workflow_that_imported_item></i> " from DMA server <i><server_name></i>
Step	Automation > Steps > <i><promoted_step></i> > History	Date: <i><date_time_of_promotion></i> Person: <i><user_that_promoted_step></i> Source: REST API Comment: Promoted with " <i><promoted_workflow></i> "
Function	Automation > Functions > <i><promoted_function></i> > History	Date: <i><date_time_of_promotion></i> Person: <i><user_that_promoted_function></i> Source: REST API Comment: Promoted with " <i><promoted_workflow></i> "

To use the promoted workflow on the destination server:

Before you run the newly promoted workflow, use the Preview report (file `promote_summary.txt`) to customize the following on the destination server:

- Password values
- Custom Field values

Set up the environment on the destination server:

- Environments: organizations, servers, instances, and databases
- Targets for deployments

Sample Scenarios

This topic shows you how to use various parameters to achieve the following workflow promotion scenarios in your environment when using "[Promote Workflow – Export and Import](#)".

Scenario 1: Preview All Automation Items but Do Not Promote show

In this scenario, all deployments, policies, and Smart Groups that are referenced by the workflow (or any of its deployments) are previewed but not promoted.

In this scenario, Preview Only is enabled by default.

In this scenario, Rollback on Error is enabled by default. The workflow and any related items that existed on the destination server prior to the promote operation will be restored in the event that the promote fails.

Example Parameter Values for Gather Parameters for Promote Workflow

Parameter Name	Example	Description								
Destination DMA Password	destpwd	Password for the user specified in the Destination DMA Username parameter.								
Destination DMA URL	see description	URL for the destination HPE DMA server. For example: <code>https://dma2.mycompany.com:8443/dma</code>								
Destination DMA Username	admindest	HPE DMA user who will perform the promote operation on the destination server.								
Export Location	/Oracle Workflows/workflow123.zip	The location where the exported HPE DMA artifacts are stored. This can be either a fully qualified ZIP filename (default) or a fully qualified directory path—based on the advanced parameter Export Zip Archive. If it is a directory, a time-stamped sub-directory or ZIP file will be created to store the files. The location is on the target server.								
Roles on Destination Server	DMA Admins	<p>Comma-separated list of roles that will be assigned to promoted items. At least one role must be specified.</p> <p>All roles are assigned to the following promoted items (workflows, steps, deployments, and policies) that do not exist on the destination HPE DMA server prior to the promote operation. The roles specified for these promoted items are given full permissions:</p> <table> <tbody> <tr> <td>Workflow</td> <td>READ, WRITE</td> </tr> <tr> <td>Step</td> <td>READ, WRITE</td> </tr> <tr> <td>Deployment</td> <td>READ, WRITE, EXECUTE</td> </tr> <tr> <td>Policy</td> <td>READ, WRITE</td> </tr> </tbody> </table> <p>The <u>first</u> role specified in Roles on Destination Server is set in the Roles attribute for promoted Smart Groups that do not exist on the destination server prior to the promote operation.</p>	Workflow	READ, WRITE	Step	READ, WRITE	Deployment	READ, WRITE, EXECUTE	Policy	READ, WRITE
Workflow	READ, WRITE									
Step	READ, WRITE									
Deployment	READ, WRITE, EXECUTE									
Policy	READ, WRITE									

Example Parameter Values for Gather Parameters for Promote Workflow, continued

Parameter Name	Example	Description
		Role-based permissions for existing items are preserved. Note: If the roles do not yet exist on the destination server, you need to create them before attempting to promote.
Workflow Name	Run Oracle Compliance Check - CIS	Name of the workflow to be promoted.

Be sure that the default values for all remaining input parameters are appropriate for your environment (see ["Parameters for Promote Workflow - Export and Import" on page 54](#)).

Scenario 2: Promote All Automation Items show

In this scenario, all deployments, policies, and Smart Groups that are referenced by the workflow (or any of its deployments) are promoted.

In this scenario, Preview Only is set to NO.

The Database Compliance summary report will be emailed to a recipient.

In this scenario, Rollback on Error is enabled by default. The workflow and any related items that existed on the destination server prior to the promote operation will be restored in the event that the promote fails.

Example Parameter Values for Gather Parameters for Promote Workflow

Parameter Name	Example	Description								
Destination DMA Password	destpwd	Password for the user specified in the Destination DMA Username parameter.								
Destination DMA URL	see description	URL for the destination HPE DMA server. For example: <code>https://dma2.mycompany.com:8443/dma</code>								
Destination DMA Username	admindest	HPE DMA user who will perform the promote operation on the destination server.								
Export Location	/Oracle Workflows/workflow123.zip	The location where the exported HPE DMA artifacts are stored. This can be either a fully qualified ZIP filename (default) or a fully qualified directory path—based on the advanced parameter Export Zip Archive. If it is a directory, a time-stamped sub-directory or ZIP file will be created to store the files. The location is on the target server.								
Preview Only	NO	If Preview Only is set to YES, the workflow will show you which items will be promoted, but it will not make any changes on the destination server. Valid values are YES/TRUE and NO/FALSE (case-insensitive).								
Roles on Destination Server	DMA Admins	<p>Comma-separated list of roles that will be assigned to promoted items. At least one role must be specified.</p> <p>All roles are assigned to the following promoted items (workflows, steps, deployments, and policies) that do not exist on the destination HPE DMA server prior to the promote operation. The roles specified for these promoted items are given full permissions:</p> <table border="0"> <tr> <td>Workflow</td> <td>READ, WRITE</td> </tr> <tr> <td>Step</td> <td>READ, WRITE</td> </tr> <tr> <td>Deployment</td> <td>READ, WRITE, EXECUTE</td> </tr> <tr> <td>Policy</td> <td>READ, WRITE</td> </tr> </table> <p>The <u>first</u> role specified in Roles on Destination Server is set in the Roles attribute for promoted Smart Groups that do not exist on the destination server prior to the promote operation.</p> <p>Role-based permissions for existing items are preserved.</p>	Workflow	READ, WRITE	Step	READ, WRITE	Deployment	READ, WRITE, EXECUTE	Policy	READ, WRITE
Workflow	READ, WRITE									
Step	READ, WRITE									
Deployment	READ, WRITE, EXECUTE									
Policy	READ, WRITE									

Example Parameter Values for Gather Parameters for Promote Workflow, continued

Parameter Name	Example	Description
		Note: If the roles do not yet exist on the destination server, you need to create them before attempting to promote.
Workflow Name	Run Oracle Compliance Check - CIS	Name of the workflow to be promoted.

The following parameter is not visible by default in a deployment. You need to expose it before you can use it.

Example Parameter Values for Gather Advanced Parameters for Promote Workflow - Import

Parameter Name	Example	Description
Email Address	JohnDoe@mycompany.com	Comma separated list of email addresses where the Database Compliance summary report will be sent.

Be sure that the default values for all remaining input parameters are appropriate for your environment (see ["Parameters for Promote Workflow - Export and Import" on page 54](#)).

Scenario 3: Promote Only a Subset of Deployments, Policies, and Smart Groups show

In this scenario, the deployments, policies, and Smart Groups to be promoted are specifically included or excluded.

- **Included objects:** Provided that these objects are referenced by the specified workflow or one (or more) of its deployments, the objects will be created or updated on the destination server. Any objects that are not explicitly specified will not be promoted.
- **Excluded objects:** All objects not in the exclude list that are referenced by the specified workflow or one (or more) of its deployments, the objects will be created or updated on the destination server.

In this scenario, Preview Only is set to NO.

In this scenario, Rollback on Error is enabled by default. The workflow and any related items that existed on the destination server prior to the promote operation will be restored in the event that the promote fails.

Example Parameter Values for Gather Parameters for Promote Workflow

Parameter Name	Example	Description
Destination DMA Password	destpwd	Password for the user specified in the Destination DMA Username parameter.
Destination DMA URL	see description	URL for the destination HPE DMA server. For example: <code>https://dma2.mycompany.com:8443/dma</code>
Destination DMA Username	admindest	HPE DMA user who will perform the promote operation on the destination server.
Export Location	/Oracle Workflows/workflow123.zip	The location where the exported HPE DMA artifacts are stored. This can be either a fully qualified ZIP filename (default) or a fully qualified directory path—based on the advanced parameter Export Zip Archive. If it is a directory, a time-stamped sub-directory or ZIP file will be created to store the files. The location is on the target server.
Filter Deployments	INCLUDE: Run Oracle Compliance Check - CIS - Linux Srvrs	A filter for deployments to be promoted. Valid values are ALL, NONE, INCLUDE: followed by a comma separated list of deployments to include, or EXCLUDE: followed by a comma separated list of deployments to exclude. The value ALL will promote all deployments associated with the workflow; the value NONE will not promote any of the deployments associated with the workflow. Note: Maximum number of characters is 1000.
Filter Policies	EXCLUDE: Oracle Test Compliance	A filter for policies to be promoted. Valid values are ALL, NONE, INCLUDE: followed by a comma separated list of policies to include, or EXCLUDE: followed by a comma separated list of policies to exclude. The value ALL will promote all policies associated with the workflow; the value NONE will not promote any of the policies associated with the workflow.

Example Parameter Values for Gather Parameters for Promote Workflow, continued

Parameter Name	Example	Description								
		Note: Maximum number of characters is 1000.								
Filter Smart Groups	INCLUDE: Linux Svrs, Europe Svrs	<p>A filter for Smart Groups to be promoted. Valid values are ALL, NONE, INCLUDE: followed by a comma separated list of Smart Groups to include, or EXCLUDE: followed by a comma separated list of Smart Groups to exclude. The value ALL will promote all Smart Groups associated with the workflow; the value NONE will not promote any of the Smart Groups associated with the workflow.</p> <p>Note: Maximum number of characters is 1000.</p>								
Preview Only	NO	If Preview Only is set to YES, the workflow will show you which items will be promoted, but it will not make any changes on the destination server. Valid values are YES/TRUE and NO/FALSE (case-insensitive).								
Roles on Destination Server	DMA Admins	<p>Comma-separated list of roles that will be assigned to promoted items. At least one role must be specified.</p> <p>All roles are assigned to the following promoted items (workflows, steps, deployments, and policies) that do not exist on the destination HPE DMA server prior to the promote operation. The roles specified for these promoted items are given full permissions:</p> <table border="0"> <tr> <td>Workflow</td> <td>READ, WRITE</td> </tr> <tr> <td>Step</td> <td>READ, WRITE</td> </tr> <tr> <td>Deployment</td> <td>READ, WRITE, EXECUTE</td> </tr> <tr> <td>Policy</td> <td>READ, WRITE</td> </tr> </table> <p>The <u>first</u> role specified in Roles on Destination Server is set in the Roles attribute for promoted Smart Groups that do not exist on the destination server prior to the promote operation.</p> <p>Role-based permissions for existing items are preserved.</p> <p>Note: If the roles do not yet exist on the destination server, you need to create them before attempting to promote.</p>	Workflow	READ, WRITE	Step	READ, WRITE	Deployment	READ, WRITE, EXECUTE	Policy	READ, WRITE
Workflow	READ, WRITE									
Step	READ, WRITE									
Deployment	READ, WRITE, EXECUTE									
Policy	READ, WRITE									
Workflow Name	Run Oracle Compliance Check - CIS	Name of the workflow to be promoted.								

Be sure that the default values for all remaining input parameters are appropriate for your environment.

Parameters for Promote Workflow - Export and Import

The following tables describe the required and optional input parameters for this workflow. For some parameters, if you do not specify a value for a parameter, a default value is assigned.

Input Parameters Defined in this Step: Gather Parameters for Promote Workflow

Parameter Name	Default Value	Required	Description
Destination DMA Password	no default	required	Password for the user specified in the Destination DMA Username parameter.
Destination DMA URL	no default	required	URL for the destination HPE DMA server. For example: <code>https://dma2.mycompany.com:8443/dma</code>
Destination DMA Username	no default	required	HPE DMA user who will perform the promote operation on the destination server.
Export Location	no default	required	The location where the exported HPE DMA artifacts are stored. This can be either a fully qualified ZIP filename (default) or a fully qualified directory path—based on the advanced parameter Export Zip Archive. If it is a directory, a time-stamped sub-directory or ZIP file will be created to store the files. The location is on the target server.
Filter Deployments	ALL	required	A filter for deployments to be promoted. Valid values are ALL, NONE, INCLUDE: followed by a comma separated list of deployments to include, or EXCLUDE: followed by a comma separated list of deployments to exclude. The value ALL will promote all deployments associated with the workflow; the value NONE will not promote any of the deployments associated with the workflow. Note: Maximum number of characters is 1000.
Filter Policies	ALL	required	A filter for policies to be promoted. Valid values are ALL, NONE, INCLUDE: followed by a comma separated list of policies to include, or EXCLUDE: followed by a comma separated list of policies to exclude. The value ALL will promote all policies associated with the workflow; the value NONE will not promote any of the policies associated with the workflow. Note: Maximum number of characters is 1000.
Preview Only	YES	required	If Preview Only is set to YES, the workflow will show you which items will be promoted, but it will not make any changes on the destination server. Valid values are YES/TRUE and NO/FALSE (case-insensitive).

Input Parameters Defined in this Step: Gather Parameters for Promote Workflow , continued

Parameter Name	Default Value	Required	Description								
Filter Smart Groups	ALL	required	<p>A filter for Smart Groups to be promoted. Valid values are ALL, NONE, INCLUDE: followed by a comma separated list of Smart Groups to include, or EXCLUDE: followed by a comma separated list of Smart Groups to exclude. The value ALL will promote all Smart Groups associated with the workflow; the value NONE will not promote any of the Smart Groups associated with the workflow.</p> <p>Note: Maximum number of characters is 1000.</p>								
Roles on Destination Server	no default	required	<p>Comma-separated list of roles that will be assigned to promoted items. At least one role must be specified.</p> <p>All roles are assigned to the following promoted items (workflows, steps, deployments, and policies) that do not exist on the destination HPE DMA server prior to the promote operation. The roles specified for these promoted items are given full permissions:</p> <table> <tr> <td>Workflow</td> <td>READ, WRITE</td> </tr> <tr> <td>Step</td> <td>READ, WRITE</td> </tr> <tr> <td>Deployment</td> <td>READ, WRITE, EXECUTE</td> </tr> <tr> <td>Policy</td> <td>READ, WRITE</td> </tr> </table> <p>The <u>first</u> role specified in Roles on Destination Server is set in the Roles attribute for promoted Smart Groups that do not exist on the destination server prior to the promote operation.</p> <p>Role-based permissions for existing items are preserved.</p> <p>Note: If the roles do not yet exist on the destination server, you need to create them before attempting to promote.</p>	Workflow	READ, WRITE	Step	READ, WRITE	Deployment	READ, WRITE, EXECUTE	Policy	READ, WRITE
Workflow	READ, WRITE										
Step	READ, WRITE										
Deployment	READ, WRITE, EXECUTE										
Policy	READ, WRITE										
Workflow Name	no default	required	Name of the workflow to be promoted.								

The following parameters are not visible by default in a deployment. You need to expose them before you can use them.

Additional Input Parameters Defined in this Step: Gather Advanced Parameters for Promote Workflow

Parameter Name	Default Value	Required	Description
Email Address	no default	optional	Comma separated list of email addresses where the Database Compliance summary report will be sent.
Export Zip Archive	YES	optional	Flag to indicate whether the workflow (and related automation items) and log files are exported as a ZIP file. If set to YES or TRUE (the default), the files are exported to a ZIP file. If set to NO or FALSE, the files are exported to a time-stamped sub-directory of the Export Location.
Ignore Platform Version	NO	optional	If set to NO (default), the Database Compliance workflows check that the source and destination HPE DMA platform versions are the same. If set to YES, the Database Compliance workflows ignore different HPE DMA platform versions and will attempt to promote the workflow anyway. Valid values are YES/TRUE and NO/FALSE (case-insensitive). Caution: Promote does not officially support promoting between different versions. Use at your own risk.
Rollback on Error	YES	optional	Set to NO if you do NOT want HPE DMA to rollback the workflow and all related items on the destination server to their original state in the event that the promote operation fails. Valid values are YES/TRUE and NO/FALSE (case-insensitive).

Send Documentation Feedback

If you have comments about this document, you can [contact the documentation team](#) by email. If an email client is configured on this system, click the link above and an email window opens with the following information in the subject line:

Feedback on Workflows for Promote (Database and Middleware Automation 10.40)

Just add your feedback to the email and click send.

If no email client is available, copy the information above to a new message in a web mail client, and send your feedback to hpe_dma_docs@hpe.com.

We appreciate your feedback!