

HP Business Service Management

Software Version: 9.26

Service Health Administration - Best Practices

Document Release Date: February 2016
Software Release Date: February 2016



Legal Notices

Warranty

The only warranties for HP products and services are set forth in the express warranty statements accompanying such products and services. Nothing herein should be construed as constituting an additional warranty. HP shall not be liable for technical or editorial errors or omissions contained herein.

The information contained herein is subject to change without notice.

Restricted Rights Legend

Confidential computer software. Valid license from HP required for possession, use or copying. Consistent with FAR 12.211 and 12.212, Commercial Computer Software, Computer Software Documentation, and Technical Data for Commercial Items are licensed to the U.S. Government under vendor's standard commercial license.

Copyright Notice

© Copyright 2005 - 2016 Hewlett-Packard Development Company, L.P.

Trademark Notices

Adobe® and Acrobat® are trademarks of Adobe Systems Incorporated.

AMD and the AMD Arrow symbol are trademarks of Advanced Micro Devices, Inc.

Google™ and Google Maps™ are trademarks of Google Inc.

Intel®, Itanium®, Pentium®, and Intel® Xeon® are trademarks of Intel Corporation in the U.S. and other countries.

iPod is a trademark of Apple Computer, Inc.

Java is a registered trademark of Oracle and/or its affiliates.

Microsoft®, Windows®, Windows NT®, Windows® XP, and Windows Vista® are U.S. registered trademarks of Microsoft Corporation.

Oracle is a registered trademark of Oracle Corporation and/or its affiliates.

UNIX® is a registered trademark of The Open Group.

Adobe® and Acrobat® are trademarks of Adobe Systems Incorporated.

Intel®, Pentium®, and Intel® Xeon® are trademarks of Intel Corporation in the U.S. and other countries.

iPod is a trademark of Apple Computer, Inc.

Java is a registered trademark of Oracle and/or its affiliates.

Microsoft®, Windows®, Windows NT®, and Windows® XP are U.S. registered trademarks of Microsoft Corporation.

Oracle is a registered trademark of Oracle Corporation and/or its affiliates.

UNIX® is a registered trademark of The Open Group.

Documentation Updates

The title page of this document contains the following identifying information:

- Software Version number, which indicates the software version.
- Document Release Date, which changes each time the document is updated.
- Software Release Date, which indicates the release date of this version of the software.

To check for recent updates or to verify that you are using the most recent edition of a document, go to: <https://softwaresupport.hp.com/group/softwaresupport/search-result?keyword=>.

This site requires an HP Passport account. If you do not have one, click the **Create an account** button on the HP Passport Sign in page.

Support

Visit the HP Software Support web site at: <https://softwaresupport.hp.com>

This web site provides contact information and details about the products, services, and support that HP Software offers.

HP Software Support provides customer self-solve capabilities. It provides a fast and efficient way to access interactive technical support tools needed to manage your business. As a valued support customer, you can benefit by using the support web site to:

- Search for knowledge documents of interest
- Submit and track support cases and enhancement requests
- Download software patches
- Manage support contracts
- Look up HP support contacts
- Review information about available services
- Enter into discussions with other software customers
- Research and register for software training

Most of the support areas require that you register as an HP Passport user and sign in. Many also require a support contract. To register for an HP Passport ID, go to <https://softwaresupport.hp.com> and click **Register**.

To find more information about access levels, go to: <https://softwaresupport.hp.com/web/softwaresupport/access-levels>

HP Software Integrations, Solutions and Best Practices

Visit the Integrations and Solutions Catalog at <https://softwaresupport.hp.com/group/softwaresupport/search-result/-/facetsearch/document/KM01702710> to explore how the products in the HP Software catalog work together, exchange information, and solve business needs.

Visit the Cross Portfolio Best Practices Library at <https://hpin.hp.com/group/best-practices-hpsw> to access a wide variety of best practice documents and materials.

Contents

Introduction	7
Document Overview	7
Chapter 1: BSM Service Health Value Proposition	8
Chapter 2: Define Service Health Requirements	9
Chapter 3: Service Health High-Level Design	10
Chapter 4: Customize Indicators and Rules	12
Adding a Data Point/Dimension in Service Health	12
KPI Assignment	18
Changing the KPI Representation	20
Customizing KPI Presentation for a Specific View	20
Changing a KPI's Calculation Rule	20
Using a Subset of a CI's KPIs	26
Displaying a KPI Only	28
Example - Customize KPI Display	28
Chapter 5: Views	32
Working With Views	32
Which view type is suitable for your needs?	33
What are some rules of thumb for creating views?	34
What is a local impact view (LIV)?	35
When should you use a Local Impact View?	36
View Permissions	37
Chapter 6: MyBSM Planning	38
Chapter 7: Use Cases / Troubleshooting	39
Service Health Not Reflecting Your True Business Health	39
Exporting Service Health Data	39

Send Documentation Feedback41

Introduction

BSM Service Health has a clear value proposition, which this document will present. If you are configuring, administering, or consuming Service Health, it is essential that you understand this value proposition, and be able to adapt it to your needs.

Service Health was designed to be adjusted and customized by the end user to meet an organization's specific needs. The wide variety of customization and tuning options can be overwhelming to the inexperienced user. The purpose of this guide is to explain some of the options and adjustments available to the end user.

The objective of this document is to help you maximize the value gained from BSM Service Health, by helping you:

- Understand the Service Health value proposition.
- Define the correct set of requirements and use cases.
- Configure and tune Service Health to your specific needs.
- Review some practical Service Health use cases.

Document Overview

This document is intended for BSM users who are familiar with BSM Service Health. This document is not intended to be a comprehensive or introductory guide. For general getting started and background material refer to the Service Health documentation (for example, within the BSM Help see **Application Administration > Service Health > Service Health Overview**). In addition, the level of detail in this document may vary from section to section and does not cover the full range of possibilities. Experienced Service Health users should be able to complete the missing parts by using their own knowledge or by using the Service Health documentation.

The content of this document was developed based on R&D's experience with Service Health implementation in the field. Our intent is to capture the major gaps and use cases where Service Health users can benefit from a lab-issued Best Practice document. Naturally, this implies that not all possible solutions and use cases are covered.

The target audience is primarily the following:

- Service Health administrator.
- Application / Service / Line of Business manager.

We encourage the readers of this document to send us your feedback, to help us improve the document as well as identify other gaps where the lab may assist you.

Chapter 1: BSM Service Health Value Proposition

Service Health provides a customizable integrated real time view of your business processes and applications, which can be aligned with the infrastructure supporting the business. This means you can determine the health of your business against predetermined objectives at any given time, while being able to link your business performance and health with the relevant supporting infrastructure. This provides you with an improved basis for communication and collaboration between various business and IT teams.

The following are the main elements of the Service Health value proposition:

- Service Health combines data from all data sources available to your BSM system, including third party data.
- The processed data is presented over a shared real time service model, allowing you to map the relations between your business and operations or IT.
- Service Health dimensions are derived from data source types.
- You can define and tune the perspectives and portions of your business you are interested in, as well as the type of data presented, threshold values, and status calculation rules. These are all customizable according to the persona type or group consuming this information.

Chapter 2: Define Service Health Requirements

You should start your Service Health implementation by collecting the Service Health consumer requirements. It is important to map the different types of consumers, the data they are interested in, and the manner by which they would like to consume it. It is also important to understand the work processes or flows within your business and IT organizations, where Service Health will be used.

Example 1: The CIO is interested in a high-level online health view of all business-critical services. The desired aspects are availability and performance; drill-down and over-time capabilities are required in case of availability or performance degradation. The data should be presented in a readable and simplified format. The data is used during a daily status call with LOB and IT managers, and presented 24/7 in the CIO's office screen.

Example 2: The IT application owner needs a detailed online view of her application, including supporting HW resources. She would like to be alerted whenever predefined thresholds (availability, performance, and SLA) are breached. As part of the event management or incident management process, the view will serve as the starting point for triage and discussion with other IT support groups or functions.

With the output of the above you should start planning your Service Health configuration: models, views, customizations (such as HIs, KPIs, and business logic rules), function- or role-based pages, permissions and so on.

Chapter 3: Service Health High-Level Design

Service Health presents its status based on the data collected by BSM's data collectors. All BSM raw data is split into two types: Events and Metrics.

Events: An event is a condition-triggered data transmission to BSM; once a condition is met (for example if the CPU threshold is breached on a physical server), an event is triggered. The event sender will evaluate data and status, encapsulate it in the event, and send it to BSM. There is therefore no predetermined schedule for events to be received by BSM. Sources of events for BSM include OM servers and agents, BSM Connector, SiteScope 11.x and later, Diagnostics 9.x and later, and NNMI 9.x and later.

Metrics: Metrics are data packages sent BSM according to a regular predetermined schedule. They contain monitoring information such as measurements and components. BSM sources for metrics are BPM, RUM, SiteScope, Diagnostics, BSM Connector, and TV.

Although Service Health status calculation is based on raw data (metrics and events), Service Health is indifferent to their existence and to the differences between them. An additional data layer comprised of Health Indicators (HIs), which will be explained shortly, is calculated on top of the raw data (metrics and events) layer. HIs are used to normalize events and metrics on the same scale, and serve as the basic data building block for KPI status calculation.

The following are brief definitions of the vital concepts:

- **Event Type Indicator (ETI).** Indicates the type of activity that triggered the event, based on CI type context. The ETI is used to determine whether an event should be taken into account when a CI's status is calculated.

ETI examples:

- Downtime (BusinessApplication CI)
- VM creation (Computer CI)
- VM migration (Computer CI)
- **Health Indicator (HI).** Provides some indication on the health of a CI. An HI comes with a predefined scope (granularity of health covered by this indicator), and can assume multiple states. Each HI is also an ETI (but not the other way around).

HI examples:

- Number of error events (BusinessApplication CI)
- Database Reads outstanding (SQL Database CI)
- CPU Load (Computer CI)

- **Key Performance Indicator (KPI).** A KPI is a major characteristic of a CI which pertains to its overall health status. A KPI's scope is greater than an HI ; it is much less granular than an HI.

KPI examples:

- Application Availability
 - Software Performance
 - Backlog
- **CI status** is determined by the status of its subordinate KPIs (Worst Status Rule); the worst status out of the group of related KPIs will determine the CI's color.
 - **Status calculation.** Status is calculated by a back-end engine running on BSM's Data Processing Server, based on raw data (metrics, events) and predefined calculation rules.

For a detailed overview of the terms above, refer to the BSM documentation (**Application Administration > Service Health > Service Health Overview**).

Chapter 4: Customize Indicators and Rules

There are cases where Service Health out-of-the-box content is not aligned with a specific user's needs. Certain information (data dimensions) may be missing or redundant for certain consumers, and customization and adjustments may be required to fill these needs.

In this section we will review a few use cases, and demonstrate how to customize Service Health HIs, KPIs and rules.

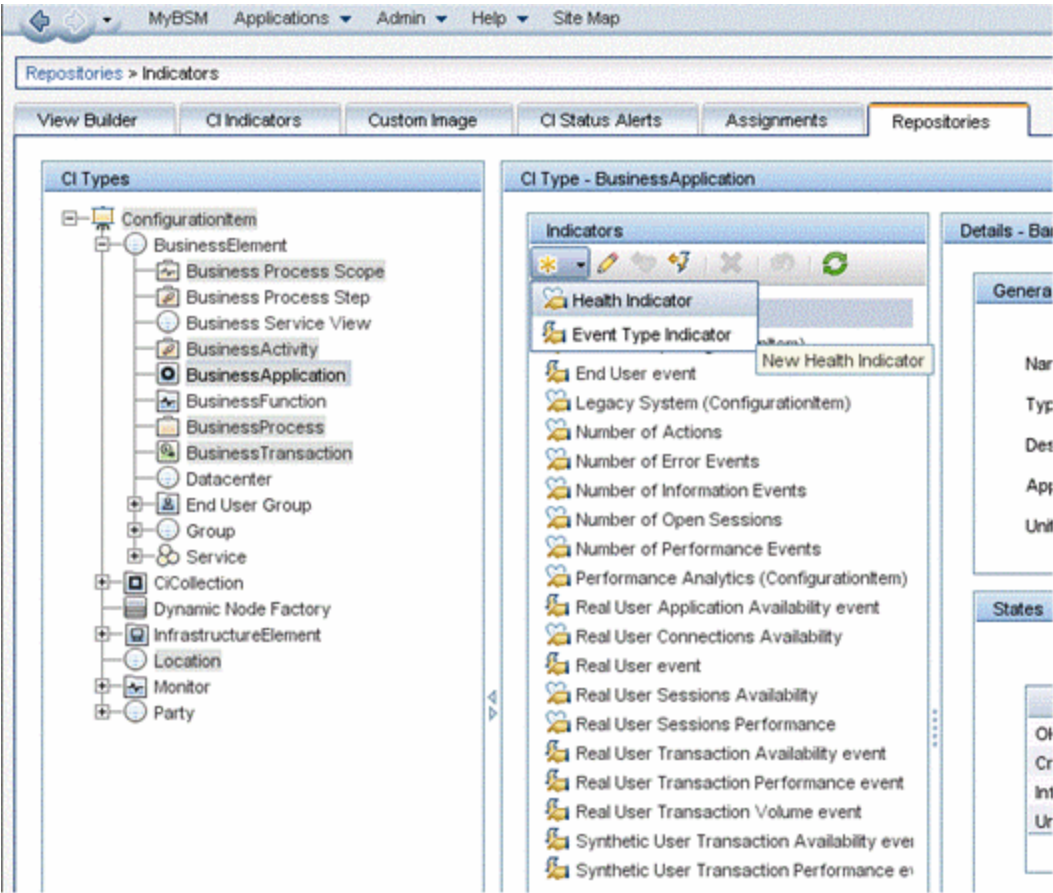
This section includes:

- ["Adding a Data Point/Dimension in Service Health" below](#)
- ["KPI Assignment" on page 18](#)
- ["Changing the KPI Representation " on page 20](#)
- ["Customizing KPI Presentation for a Specific View" on page 20](#)
- ["Changing a KPI's Calculation Rule" on page 20](#)
- ["Using a Subset of a CI's KPIs" on page 26](#)
- ["Displaying a KPI Only" on page 28](#)
- ["Example - Customize KPI Display" on page 28](#)

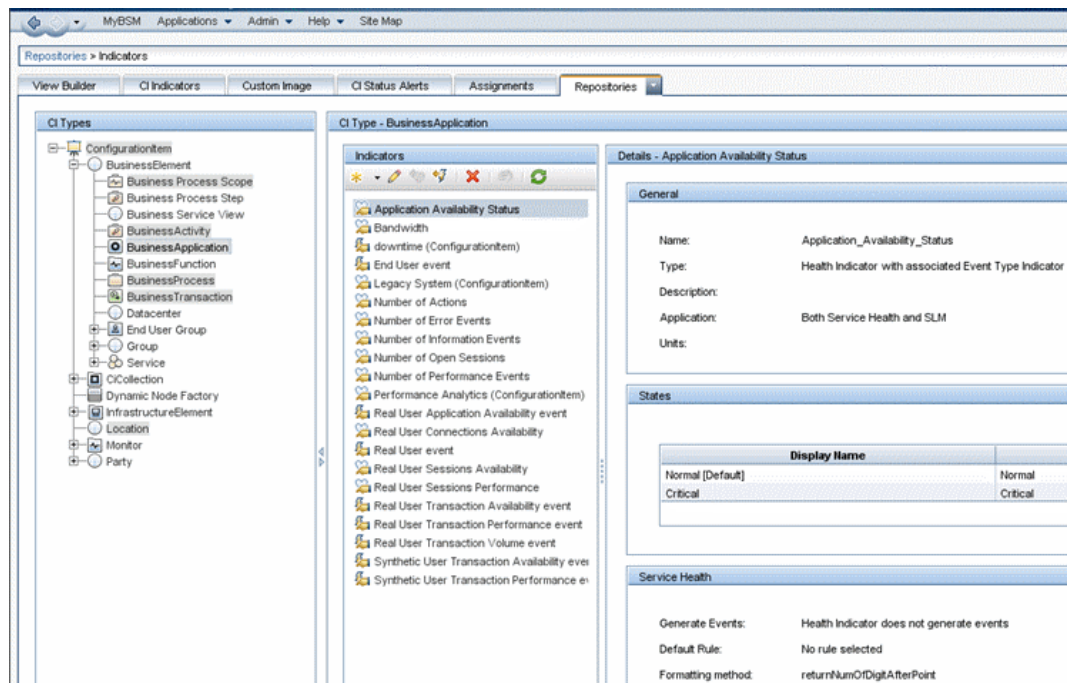
Adding a Data Point/Dimension in Service Health

You can create an additional data point/dimension in Service Health, for instance, when a new HI for a business application - Application Availability Status - is needed to report application availability based on a SiteScope URL monitor. (This example assumes we already have the supporting topology configuration and measurement HI mapping).

1. Create a new HI:
 - a. Access **Admin > Service Health > Repositories > Indicators**.
 - b. In the left pane (CI Types), select the CI for which you would like to create the new HI.
 - c. In the center pane (Indicators), click **New** and select **Health Indicator**.

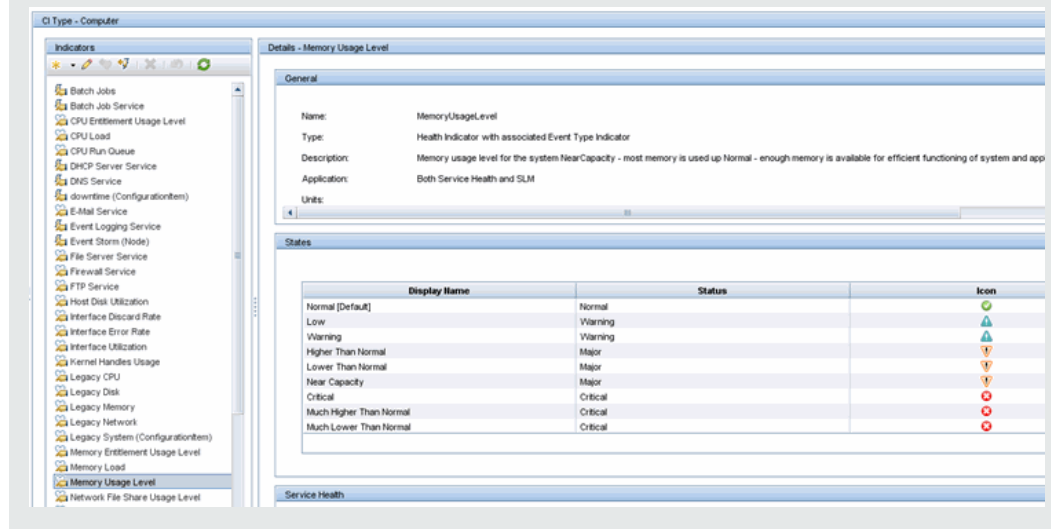


- d. Complete the **Display Name** and **Name** fields and click **Save**. In the images below, we created a new HI named Application Availability Status.



Make sure the new HI's states are aligned with your needs, and use meaningful names. This makes it easier for Service Health consumers such as NOC operators or application support to understand. Referring to the HI in the image above, some examples might be Available, Not Responding, and so on.

Note: In some cases, an HI may have multiple **states** mapped to one **status**. For instance, Memory Usage Level HI (Computer CI type) has nine states mapped to four statuses (see the following image). In such cases, make sure you map statuses to states properly.



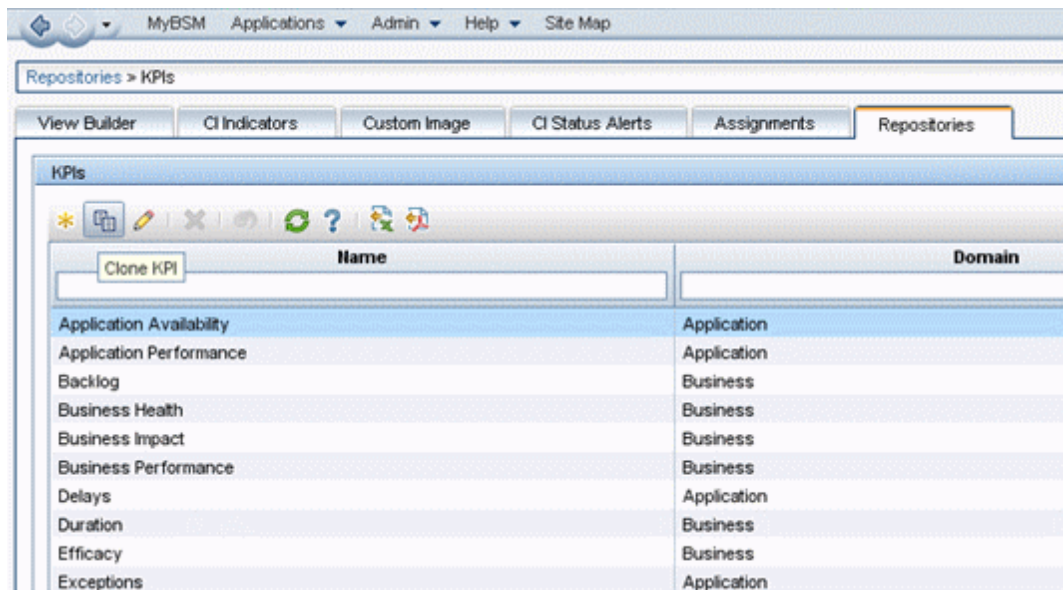
Note: Although it is technically possible, we recommended *not* feeding an HI with both metrics and events. This may result with status inconsistency (flickering) when events and metrics data are not perfectly aligned in low time granularity.

2. Create a new KPI:

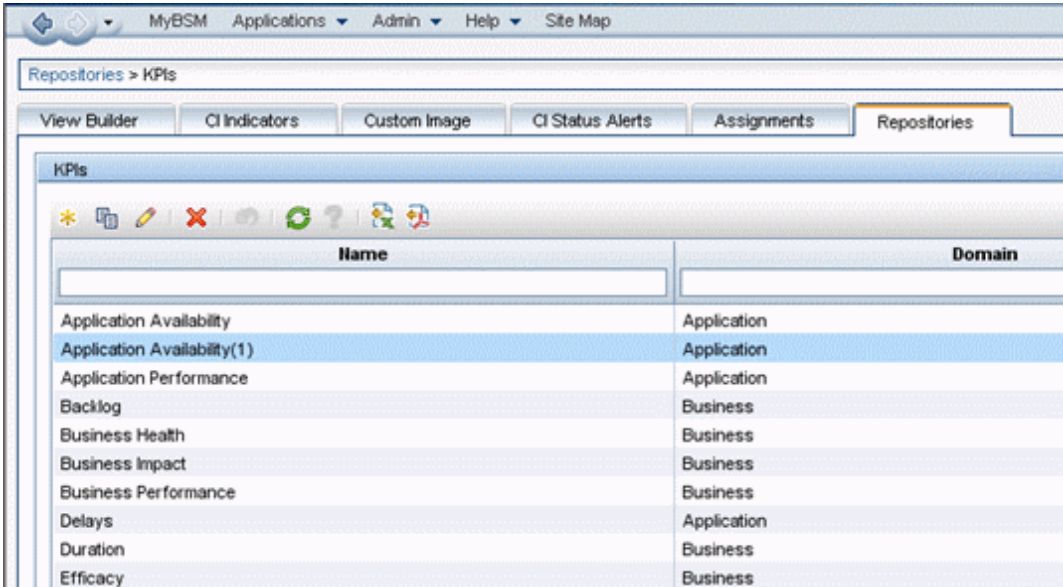
A common use case for creating a new KPI is when you want to present a finer granularity KPI for a high level CI (for example Business Application), so that it is visible in the 360 View or Top View.

Note: Creating a new KPI is similar to the cloning process. We recommend you create a new KPI only in case the required logic is not similar to any existing KPI. The main difference between Clone and New is in the KPI's selected rules.

- a. Access **Admin > Service Health > Repositories > KPIs**.
- b. Click the KPI to be cloned.
- c. Click **Clone KPI**:

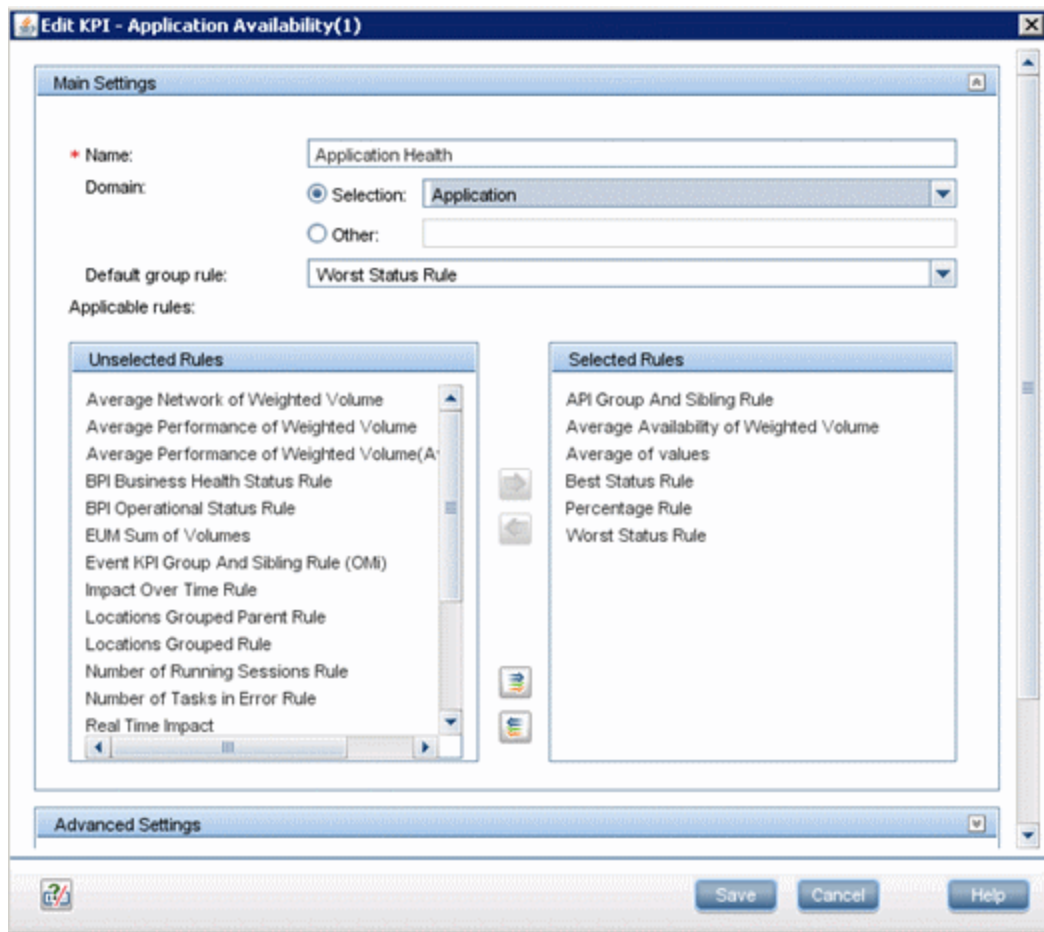


In the example above, we are cloning the Application Availability KPI. The result is as follows:

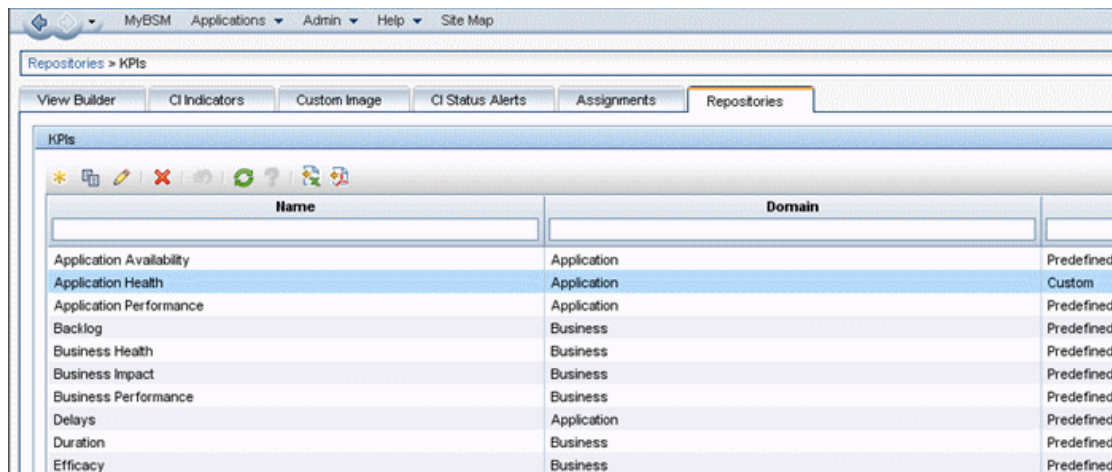


Name	Domain
Application Availability	Application
Application Availability(1)	Application
Application Performance	Application
Backlog	Business
Business Health	Business
Business Impact	Business
Business Performance	Business
Delays	Application
Duration	Business
Efficacy	Business

3. Click **Edit** to edit the newly created KPI.
4. In the **Main Settings** section, rename the KPI as relevant, and select **Domain** and **Default Group Rule**, as well as the **Applicable Rules**.



5. In the **Advanced Settings** section, you can change or determine the following:
 - KPI calculation order, compared to other KPIs for the same CI. (This is important if the new KPI will be calculated based on the result of other KPIs.)
 - The location where this KPI will be displayed, relative to other KPIs.
 - Condition for "Critical" state.
 - User type for which this KPI is applicable for.
6. In the **KPI Parameters** section, you can change the presentation type, as well as edit or add keys and colors. For example, you can change KPI presentation from an "Icon" to a "Value" or "Text" presentation type.



Name	Domain	
Application Availability	Application	Predefined
Application Health	Application	Custom
Application Performance	Application	Predefined
Backlog	Business	Predefined
Business Health	Business	Predefined
Business Impact	Business	Predefined
Business Performance	Business	Predefined
Delays	Application	Predefined
Duration	Business	Predefined
Efficacy	Business	Predefined

For further details regarding various fields and options, refer to the product documentation (**Application Administration > Service Health > KPI Repository > KPI Repository User Interface**).

KPI Assignment

KPI assignments allow you to add KPIs to existing assignments or create new ones. It is recommended to create a new assignment only when the condition differs from the OOTB assignment condition.

An example for a case where a new KPI is needed is when Service Health consumers are interested in separating synthetic from real user data. By default, both data types are mapped to the same KPIs (Application Performance and Availability) for Business Transaction CIs.

1. Access **Service Health Admin > Assignments > KPI Assignments**.
2. Choose the appropriate CI type in the left pane and click **New** or **Edit**.
3. In the **Condition** section, assign a fine-grain condition in addition to the “Monitored By” main condition.
4. In the **KPI Configurations** section, add the KPIs you want assigned by this rule.

A KPI will be assigned only if the assignment's condition is met, and the CI has at least one of the HIs which are defined in the **Related HIs** section of the KPI configuration.

5. In the **Context Menus** section, add relevant context menus.

Add KPI Assignment for CI Type: BusinessApplication

Name:
Description:

Condition

Monitored by:

Property Name	Operator	Value
BusinessCriticality	is like	%Critical%

KPI Configurations

KPI	Calculated Based On	Related Health Indicators	Business Rule
Duration	His and child KPIs	Application Availability Status	Worst Status Rule

Context Menus

Available Context Menus	Selected Context Menus
Siebel Menu	Transaction/Vision Menu

The result should look as follows:

MyBSM Applications Admin Help Site Map

Assignments > KPI Assignments

View Builder OI Indicators Custom Image OI Status Alerts Assignments Repositories

Filter: Show all assignments

ConfigurationItem
BusinessElement
BusinessProcessScope
BusinessProcessStep
BusinessServiceView
BusinessActivity
BusinessApplication
BusinessFunction
BusinessProcess
BusinessTransaction
Datacenter
End User Group
Group
Service
Collection
Dynamic Node Factory
InfrastructureElement
Location
Monitor
Party

Assignments for CI Type: BusinessApplication

Assignment Name	Monitored By	Status	KPIs	Type
BPM Business Application KPI Assignments	BPM	Running		Predefined
New TV Assignment for BizApp	TV	Running	Duration	Custom
OM KPI Assignments(ConfigurationItem)	TV	Running	Unassigned Events, Unresolved Events	Predefined
RUM Business Application KPI Assignments	RUM	Running	Application Availability, Application Perform...	Predefined
SHA assignments(BusinessElement)	SHA	Running	Performance Analytics	Predefined
SiteScope Related KPIs Assignment(Config...	SiteScope	Running	Legacy System	Predefined

Changing the KPI Representation

You can change KPI representation if you need to display the numeric value of a KPI calculation result, instead of (or in addition to) a status icon. This is relevant if the selected KPI is calculated on a numeric basis.

1. Access **Admin > Service Health > Repositories > KPIs**.
2. Select the KPI and open it for editing.
3. Expand the **KPI Parameters** section.
4. In the **Presentation type** field, select **Value or status**, and save.

Customizing KPI Presentation for a Specific View

In some use cases, you may want to customize KPI presentation to a specific view. For example:

- A consumer is interested only in a subset of a CI's KPIs. For instance, an application owner is interested only in End User experience data, but the OOTB view contains Application, Software, Business, and System KPIs. Assume we want to remove the Legacy System KPI from the view's presentation. For details, see ["Using a Subset of a CI's KPIs" on page 26](#).
- A variation of the above is when a consumer would like a certain KPI to be displayed, but not considered when calculating CI statuses. For instance, a business user would like the Legacy System KPI to be presented in a view, but not taken into consideration in CI status calculation. For details, see ["Displaying a KPI Only" on page 28](#).
- A user would like to customize the Application Availability KPI. For details, see ["Example - Customize KPI Display" on page 28](#).

Changing a KPI's Calculation Rule

In certain cases, you may want to change the KPI rule or calculation method. This may be needed if:

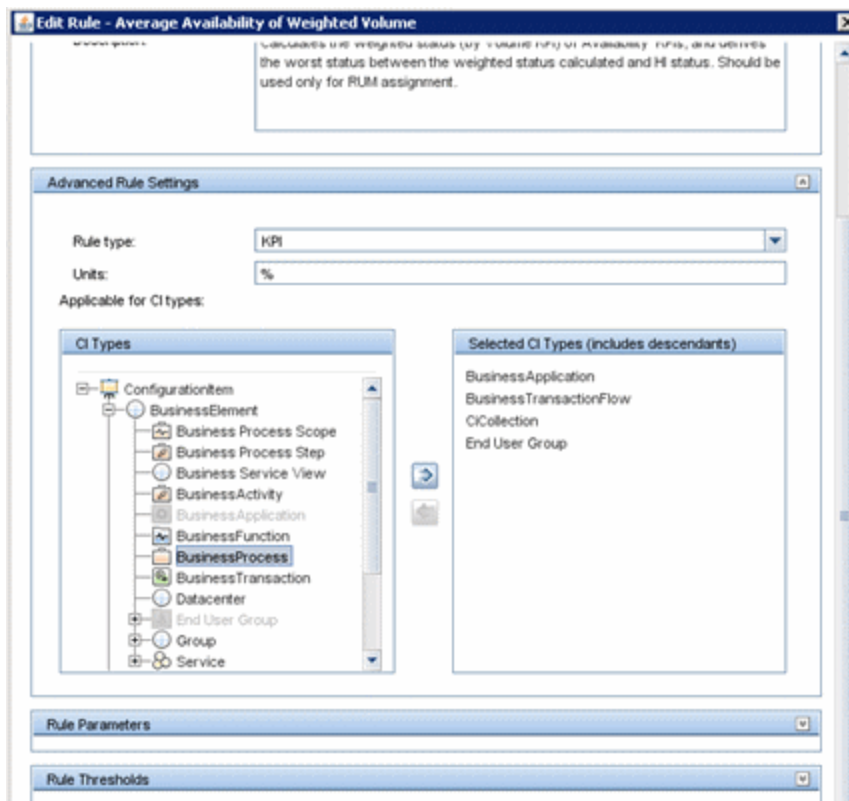
- OOTB thresholds do not suit your organization's standard.
- You would like to apply a different rule for a certain KPI.
- The rule logic you need is not part of the OOTB rules set. (This document does not address new rule implementation; for details refer to the BSM Extensibility Guide.)

There are three levels where a KPI's rule can be modified, as described in the following sections:

Changing a Rule Across BSM

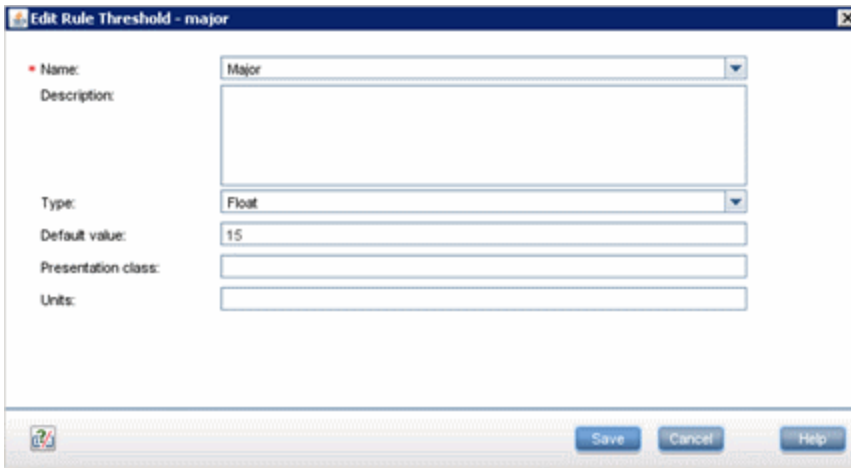
The following will apply to every instance of this KPI; any CI assigned with the selected KPI will use the changed rule:

1. Access **Admin > Service Health > Repositories > Business Rules**.
1. Open a rule for editing.
2. In the **Edit Rule** dialog box, the **Advanced Rule Settings** section defines the set of CIs on which this rule can be applied. In order to extend the set of eligible CIs, select one or more CIs in the **CI Types** area, and move them to the **Selected CI Types (Includes Descendants)** area.



3. The **Rule Thresholds** section allows you to customize status condition values that are applied to the result of the rule calculation, to your organization's standard. In the image below, we changed

the Major state threshold from 30 to 15.



Changing a Rule for a CI Type

The following rule modification will apply to CI instances of the selected CI type (class):

1. Access **Admin > Service Health > Assignments > KPI Assignments**.
2. Select the CI you want to modify in the **CI Types** pane on the left.
3. The **KPI Assignments** tab (on the right) displays the list of assignments associated with this CI type.
4. Select the Assignment you want to modify and click **Edit**.
5. In the **KPI Assignment for CI Type** dialog box:
 - The **KPI Configurations** allows you to add additional KPIs as well as edit existing KPI rules.
 - The **Propagation Rule** tab in the **Assignment for CI Types** pane allows you to change or add propagation rules for this CI type.
6. In the **Propagation Rule for CI Type** edit box:
 - The **Condition** section allows you to change the parent CI type and the KPI type that will be propagated.
 - The **Task** section allows you to restrict propagations, change KPI calculation rules, or use a custom KPI for propagation.

In the following image a new propagation rule is created; the customized Application Availability KPI (created in the KPI customization example above) is assigned to the Business Application CI type,

using the New TV Assignment for BizApp customized assignment rule. This KPI will not be propagated to any parent of the Business Application CI.

Add Propagation Rule for CI Type: BusinessApplication

Define a KPI Propagation Rule. When a condition is filled on a CI, KPIs are assigned to the CI's parent based on the Task definitions.

Rule Settings

Name: TV Application Availability Status KPI Propagation
Description:

Condition

Source CI Type: BusinessApplication
Parent CI Type: ConfigurationItem
Assigned KPI Type: Application Availability

Task

☒ Do not propagate the KPI
☐ Propagate the same KPI using a different rule: Select a rule
☐ Propagate custom KPIs

Save Cancel Help

The result is as follows:

Business Service Management - Service Health Administration

Assignments > KPI Assignments

View Builder CI Indicators Custom Image CI Status Alerts Assignments Repositories

Assignments for CI Type: BusinessApplication

Propagation Rules define exceptions to the default KPI propagation. By default, when a KPI is assigned to a CI the KPI is propagated to the CI's parents, with the default group rule (as defined in the KPI Repository).

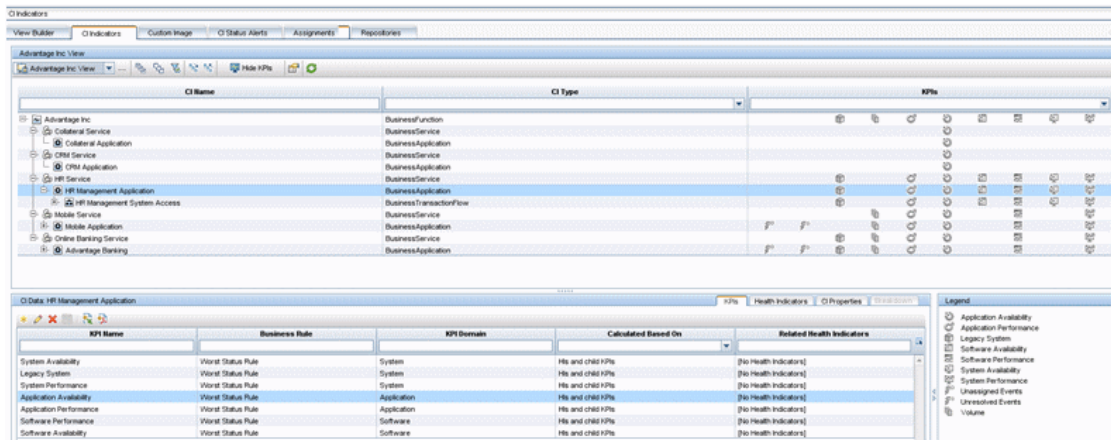
Rule Name	Parent CI Type	Assigned KPI	Propagated KPIs	Type
OM Unassigned Event KPI Propagation/Con...	ConfigurationItem	Unassigned Events	None	Predefined
OM Unresolved Event KPI Propagation/Con...	ConfigurationItem	Unresolved Events	None	Predefined
TV Application Availability Status KPI Propa...	ConfigurationItem	Application Availability	None	Custom

Changing a Rule for a CI Instance

The most granular form of rule modification impacts one CI only; this type of change is rare. If the motivation for such a change is valid, we would expect it to be implemented on the CI type level.

Note that this kind of customization disconnects the CI instance from its OOTB assignment. The only way to link it with its original assignment is to delete the changed KPI, and run KPI Assignment.

1. Access **Admin > Service Health > CI Indicators**.
2. Select the view containing the CI whose KPI you want to change (in the upper section).
3. In the **CI Data** section (the lower part of the page), the **KPIs** tab displays all the KPIs assigned to the selected CI instance. You can either edit existing KPIs, or add new KPIs. The procedure is similar to what is described in the previous sections.

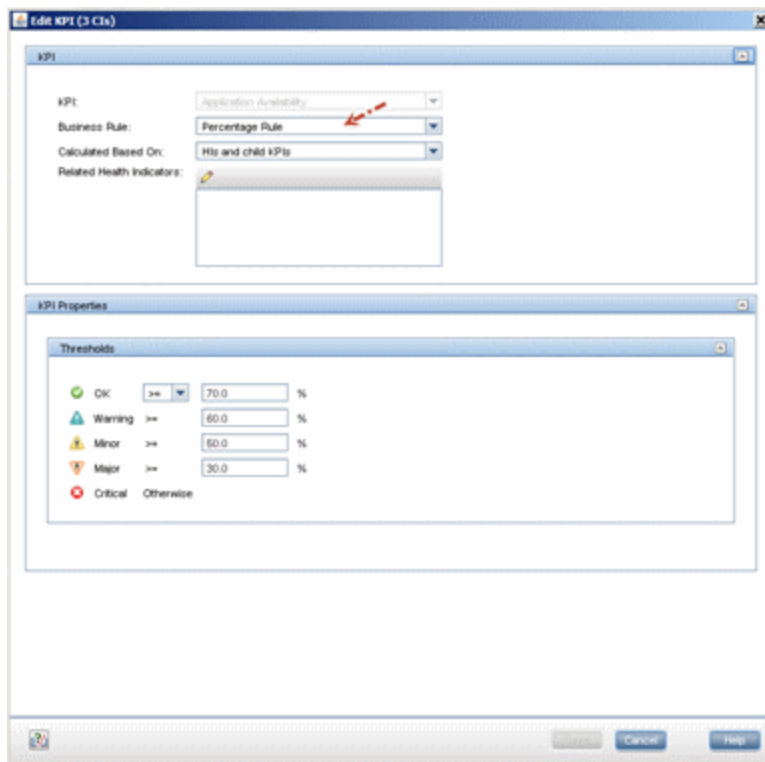


Bulk Operations

Various operations mentioned in this chapter can be performed in bulk. If you have a view containing several CIs and you want to update their KPIs in the same manner:

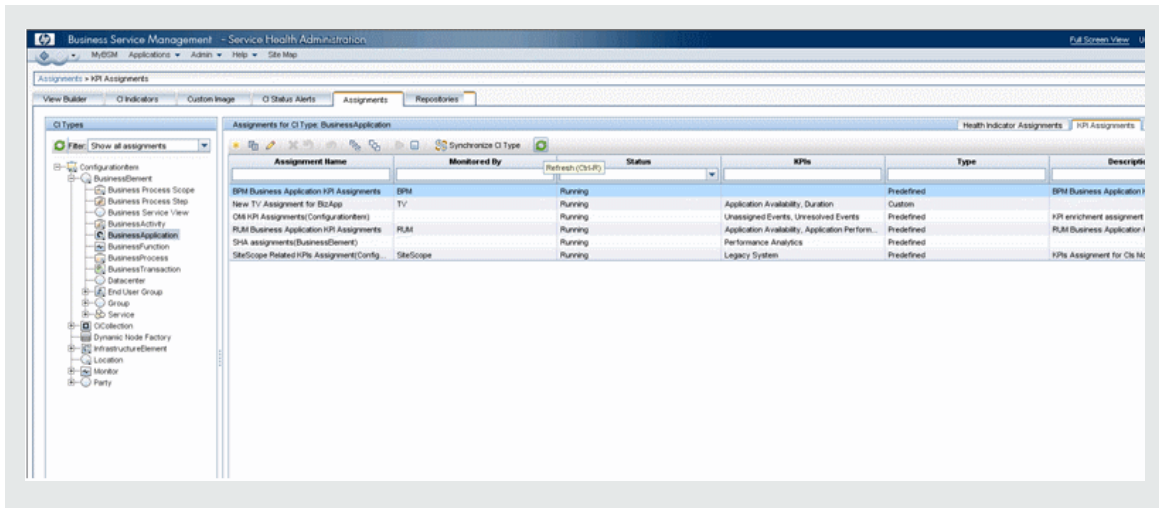
1. Access **Admin > Service Health > CI Indicators**.
2. Select the relevant view.
3. Select the (multiple) CIs you want to change. The **Common CI Data** (lower pane) presents the group of shared KPIs for all the selected CIs.

4. Perform the desired changes.



Note: If you have created new assignments or propagation rules, or if you have updated existing assignments or propagation rules, new KPIs should be created in order for those assignments and rules to take effect. You must therefore delete existing KPIs (which were created or assigned based on the previous rules). After that, you must refresh KPI assignments (in the **Admin > Service Health > Assignments > KPI Assignments** tab) thus triggering the creation of the new KPIs.

If the CIs which are impacted by the new assignments or propagation rules are part of one view, or grouped in a form that allows bulk operation, this KPI deletion can be performed in bulk (see the previous section).



Using a Subset of a CI's KPIs

In some cases, a consumer may be interested only in a subset of a CI's KPIs. For example, an Application owner might be interested only in end user experience data, and we want to remove the **Legacy System** KPI from a view's presentation.

1. Access **Admin > Service Health > View Builder**.
2. Right-click the view you want to change in the **View Selector** (left pane), and select **Properties**.
3. Select the relevant KPI.

Include in View	Include in CI Status	KPI	Domain	Business User	Operations User
<input checked="" type="checkbox"/>	<input checked="" type="checkbox"/>	Application Availability	Application	<input checked="" type="checkbox"/>	<input checked="" type="checkbox"/>
<input checked="" type="checkbox"/>	<input checked="" type="checkbox"/>	Application Health	Application	<input checked="" type="checkbox"/>	<input checked="" type="checkbox"/>
<input checked="" type="checkbox"/>	<input checked="" type="checkbox"/>	Application Performance	Application	<input checked="" type="checkbox"/>	<input checked="" type="checkbox"/>
<input checked="" type="checkbox"/>	<input checked="" type="checkbox"/>	Backlog	Business	<input checked="" type="checkbox"/>	<input checked="" type="checkbox"/>
<input checked="" type="checkbox"/>	<input checked="" type="checkbox"/>	Business Health	Business	<input checked="" type="checkbox"/>	<input checked="" type="checkbox"/>
<input checked="" type="checkbox"/>	<input checked="" type="checkbox"/>	Business Impact	Business	<input checked="" type="checkbox"/>	<input checked="" type="checkbox"/>
<input checked="" type="checkbox"/>	<input checked="" type="checkbox"/>	Business Performance	Business	<input checked="" type="checkbox"/>	<input checked="" type="checkbox"/>
<input checked="" type="checkbox"/>	<input checked="" type="checkbox"/>	Delays	Application	<input checked="" type="checkbox"/>	<input checked="" type="checkbox"/>
<input checked="" type="checkbox"/>	<input checked="" type="checkbox"/>	Duration	Business	<input checked="" type="checkbox"/>	<input checked="" type="checkbox"/>
<input checked="" type="checkbox"/>	<input checked="" type="checkbox"/>	Efficacy	Business	<input checked="" type="checkbox"/>	<input checked="" type="checkbox"/>
<input checked="" type="checkbox"/>	<input checked="" type="checkbox"/>	Exceptions	Application	<input checked="" type="checkbox"/>	<input checked="" type="checkbox"/>
<input checked="" type="checkbox"/>	<input checked="" type="checkbox"/>	Failures	Application	<input checked="" type="checkbox"/>	<input checked="" type="checkbox"/>
<input checked="" type="checkbox"/>	<input checked="" type="checkbox"/>	Generic	Unassigned	<input checked="" type="checkbox"/>	<input checked="" type="checkbox"/>
<input type="checkbox"/>	<input type="checkbox"/>	Legacy System	System	<input checked="" type="checkbox"/>	<input checked="" type="checkbox"/>
<input checked="" type="checkbox"/>	<input checked="" type="checkbox"/>	Locations	Application	<input checked="" type="checkbox"/>	<input checked="" type="checkbox"/>
<input checked="" type="checkbox"/>	<input checked="" type="checkbox"/>	Network Availability	Network	<input checked="" type="checkbox"/>	<input checked="" type="checkbox"/>
<input checked="" type="checkbox"/>	<input checked="" type="checkbox"/>	Network Performance	Network	<input checked="" type="checkbox"/>	<input checked="" type="checkbox"/>
<input checked="" type="checkbox"/>	<input checked="" type="checkbox"/>	Number Of open Incidents	Business	<input checked="" type="checkbox"/>	<input checked="" type="checkbox"/>
<input checked="" type="checkbox"/>	<input checked="" type="checkbox"/>	OT Impact	Business	<input checked="" type="checkbox"/>	<input checked="" type="checkbox"/>
<input checked="" type="checkbox"/>	<input checked="" type="checkbox"/>	Operational Status	Business	<input checked="" type="checkbox"/>	<input checked="" type="checkbox"/>
<input checked="" type="checkbox"/>	<input checked="" type="checkbox"/>	PNR	Business	<input checked="" type="checkbox"/>	<input checked="" type="checkbox"/>
<input checked="" type="checkbox"/>	<input checked="" type="checkbox"/>	Performance Analytics	Business	<input checked="" type="checkbox"/>	<input checked="" type="checkbox"/>

4. Clear the **Include in view** check box.

Include in View	Include in CI Status	KPI	Domain	Business User	Operations User
<input checked="" type="checkbox"/>	<input checked="" type="checkbox"/>	Application Availability	Application	<input checked="" type="checkbox"/>	<input checked="" type="checkbox"/>
<input checked="" type="checkbox"/>	<input checked="" type="checkbox"/>	Application Health	Application	<input checked="" type="checkbox"/>	<input checked="" type="checkbox"/>
<input checked="" type="checkbox"/>	<input checked="" type="checkbox"/>	Application Performance	Application	<input checked="" type="checkbox"/>	<input checked="" type="checkbox"/>
<input checked="" type="checkbox"/>	<input checked="" type="checkbox"/>	Backlog	Business	<input checked="" type="checkbox"/>	<input checked="" type="checkbox"/>
<input checked="" type="checkbox"/>	<input checked="" type="checkbox"/>	Business Health	Business	<input checked="" type="checkbox"/>	<input checked="" type="checkbox"/>
<input checked="" type="checkbox"/>	<input checked="" type="checkbox"/>	Business Impact	Business	<input checked="" type="checkbox"/>	<input checked="" type="checkbox"/>
<input checked="" type="checkbox"/>	<input checked="" type="checkbox"/>	Business Performance	Business	<input checked="" type="checkbox"/>	<input checked="" type="checkbox"/>
<input checked="" type="checkbox"/>	<input checked="" type="checkbox"/>	Delays	Application	<input checked="" type="checkbox"/>	<input checked="" type="checkbox"/>
<input checked="" type="checkbox"/>	<input checked="" type="checkbox"/>	Duration	Business	<input checked="" type="checkbox"/>	<input checked="" type="checkbox"/>
<input checked="" type="checkbox"/>	<input checked="" type="checkbox"/>	Efficacy	Business	<input checked="" type="checkbox"/>	<input checked="" type="checkbox"/>
<input checked="" type="checkbox"/>	<input checked="" type="checkbox"/>	Exceptions	Application	<input checked="" type="checkbox"/>	<input checked="" type="checkbox"/>
<input checked="" type="checkbox"/>	<input checked="" type="checkbox"/>	Failures	Application	<input checked="" type="checkbox"/>	<input checked="" type="checkbox"/>
<input checked="" type="checkbox"/>	<input checked="" type="checkbox"/>	Generic	Unassigned	<input checked="" type="checkbox"/>	<input checked="" type="checkbox"/>
<input type="checkbox"/>	<input type="checkbox"/>	Legacy System	System	<input checked="" type="checkbox"/>	<input checked="" type="checkbox"/>
<input checked="" type="checkbox"/>	<input checked="" type="checkbox"/>	Locations	Application	<input checked="" type="checkbox"/>	<input checked="" type="checkbox"/>
<input checked="" type="checkbox"/>	<input checked="" type="checkbox"/>	Network Availability	Network	<input checked="" type="checkbox"/>	<input checked="" type="checkbox"/>
<input checked="" type="checkbox"/>	<input checked="" type="checkbox"/>	Network Performance	Network	<input checked="" type="checkbox"/>	<input checked="" type="checkbox"/>
<input checked="" type="checkbox"/>	<input checked="" type="checkbox"/>	Number Of open Incidents	Business	<input checked="" type="checkbox"/>	<input checked="" type="checkbox"/>
<input checked="" type="checkbox"/>	<input checked="" type="checkbox"/>	OT Impact	Business	<input checked="" type="checkbox"/>	<input checked="" type="checkbox"/>
<input checked="" type="checkbox"/>	<input checked="" type="checkbox"/>	Operational Status	Business	<input checked="" type="checkbox"/>	<input checked="" type="checkbox"/>
<input checked="" type="checkbox"/>	<input checked="" type="checkbox"/>	PNR	Business	<input checked="" type="checkbox"/>	<input checked="" type="checkbox"/>
<input checked="" type="checkbox"/>	<input checked="" type="checkbox"/>	Performance Analytics	Business	<input checked="" type="checkbox"/>	<input checked="" type="checkbox"/>

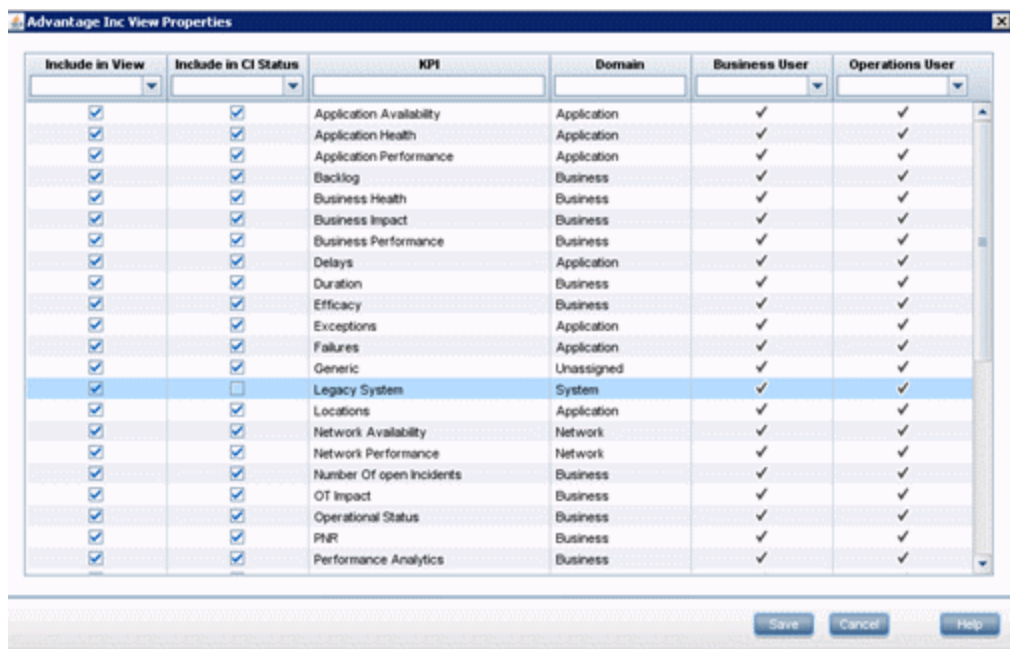
5. Click **Save**.

This action automatically removes this KPI from CI status calculation as well.

Displaying a KPI Only

A variation of the above scenario is when a consumer would like a certain KPI to be displayed, but not considered when calculating the CI's status. For example suppose a business user would like the **Legacy System** KPI to be presented in a view, but not taken into consideration in the CI's status calculation.

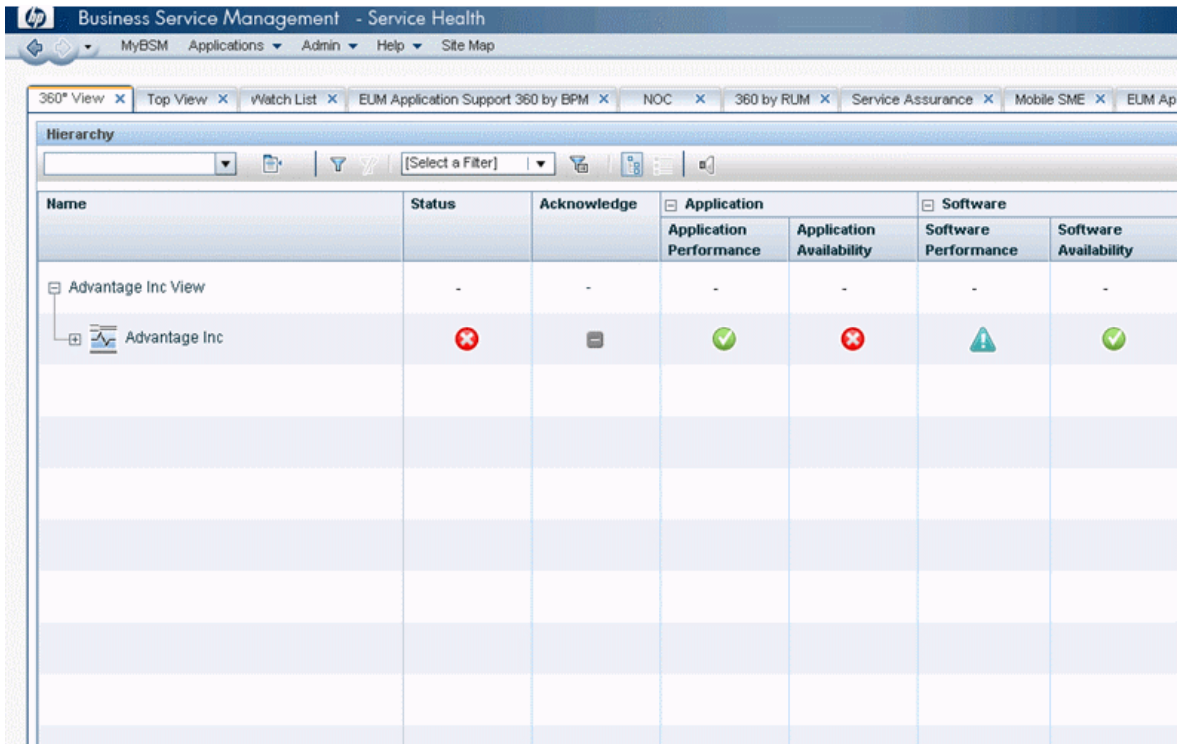
1. Access **Admin > Service Health > View Builder**.
2. Right-click the view you want to change in the **View Selector** (left pane), and select **Properties**.
3. Select the relevant KPI.
4. Clear the **Include in CI Status** check box.
5. Click **Save**.



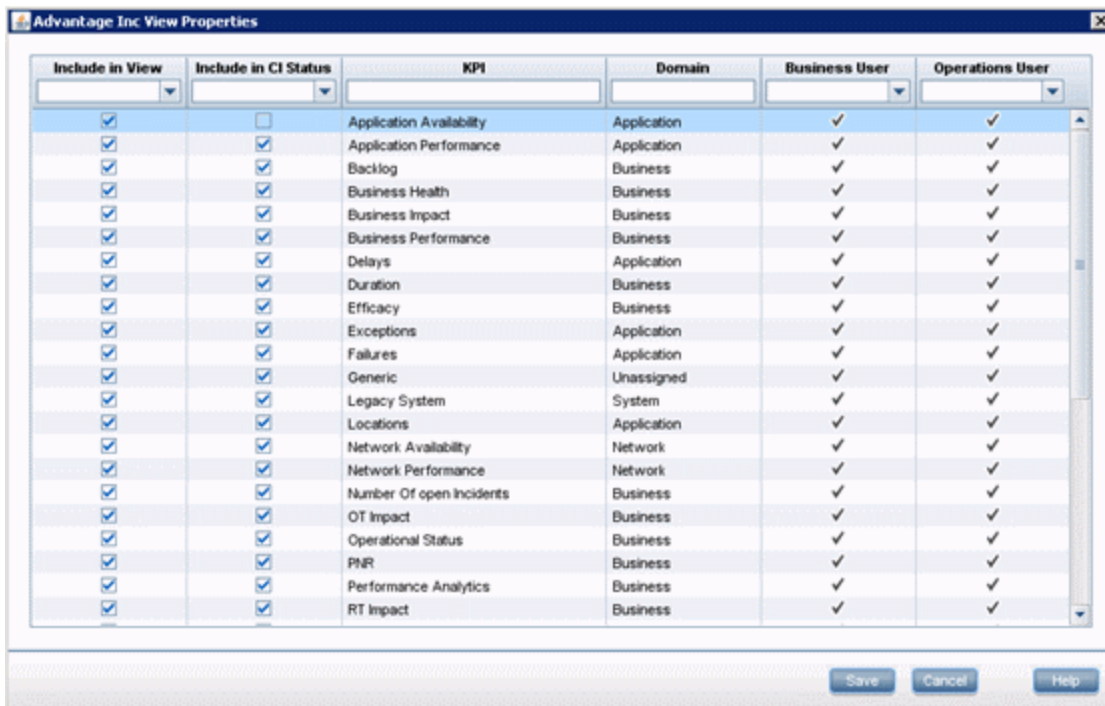
Example - Customize KPI Display

Suppose we want to customize the **Application Availability** KPI display.

Here's how the view appears in the Service Health 360 View; note that the Advantage Inc CI status is **Critical**, which is derived from the **Application Availability** KPI's status:



We clear the **Include in CI Status** check box:



Now the view looks like this; the Advantage Inc CI's status changes to **Warning** despite the fact that **Application Availability** KPI is still **Critical**:

Name	Status	Acknowledge	Application		Software	
			Application Performance	Application Availability	Software Performance	Software Availability
Advantage Inc View	-	-	-	-	-	-
Advantage Inc						

Now we will clear the **Include in View** check box as well:

Include in View	Include in CI Status	KPI	Domain	Business User	Operations User
<input type="checkbox"/>	<input type="checkbox"/>	Application Availability	Application	<input checked="" type="checkbox"/>	<input checked="" type="checkbox"/>
<input checked="" type="checkbox"/>	<input checked="" type="checkbox"/>	Application Performance	Application	<input checked="" type="checkbox"/>	<input checked="" type="checkbox"/>
<input checked="" type="checkbox"/>	<input checked="" type="checkbox"/>	Backlog	Business	<input checked="" type="checkbox"/>	<input checked="" type="checkbox"/>
<input checked="" type="checkbox"/>	<input checked="" type="checkbox"/>	Business Health	Business	<input checked="" type="checkbox"/>	<input checked="" type="checkbox"/>
<input checked="" type="checkbox"/>	<input checked="" type="checkbox"/>	Business Impact	Business	<input checked="" type="checkbox"/>	<input checked="" type="checkbox"/>
<input checked="" type="checkbox"/>	<input checked="" type="checkbox"/>	Business Performance	Business	<input checked="" type="checkbox"/>	<input checked="" type="checkbox"/>
<input checked="" type="checkbox"/>	<input checked="" type="checkbox"/>	Delays	Application	<input checked="" type="checkbox"/>	<input checked="" type="checkbox"/>
<input checked="" type="checkbox"/>	<input checked="" type="checkbox"/>	Duration	Business	<input checked="" type="checkbox"/>	<input checked="" type="checkbox"/>
<input checked="" type="checkbox"/>	<input checked="" type="checkbox"/>	Efficacy	Business	<input checked="" type="checkbox"/>	<input checked="" type="checkbox"/>
<input checked="" type="checkbox"/>	<input checked="" type="checkbox"/>	Exceptions	Application	<input checked="" type="checkbox"/>	<input checked="" type="checkbox"/>
<input checked="" type="checkbox"/>	<input checked="" type="checkbox"/>	Failures	Application	<input checked="" type="checkbox"/>	<input checked="" type="checkbox"/>
<input checked="" type="checkbox"/>	<input checked="" type="checkbox"/>	Generic	Unassigned	<input checked="" type="checkbox"/>	<input checked="" type="checkbox"/>
<input checked="" type="checkbox"/>	<input checked="" type="checkbox"/>	Legacy System	System	<input checked="" type="checkbox"/>	<input checked="" type="checkbox"/>
<input checked="" type="checkbox"/>	<input checked="" type="checkbox"/>	Locations	Application	<input checked="" type="checkbox"/>	<input checked="" type="checkbox"/>
<input checked="" type="checkbox"/>	<input checked="" type="checkbox"/>	Network Availability	Network	<input checked="" type="checkbox"/>	<input checked="" type="checkbox"/>
<input checked="" type="checkbox"/>	<input checked="" type="checkbox"/>	Network Performance	Network	<input checked="" type="checkbox"/>	<input checked="" type="checkbox"/>
<input checked="" type="checkbox"/>	<input checked="" type="checkbox"/>	Number Of open Incidents	Business	<input checked="" type="checkbox"/>	<input checked="" type="checkbox"/>
<input checked="" type="checkbox"/>	<input checked="" type="checkbox"/>	OT Impact	Business	<input checked="" type="checkbox"/>	<input checked="" type="checkbox"/>
<input checked="" type="checkbox"/>	<input checked="" type="checkbox"/>	Operational Status	Business	<input checked="" type="checkbox"/>	<input checked="" type="checkbox"/>
<input checked="" type="checkbox"/>	<input checked="" type="checkbox"/>	PNR	Business	<input checked="" type="checkbox"/>	<input checked="" type="checkbox"/>
<input checked="" type="checkbox"/>	<input checked="" type="checkbox"/>	Performance Analytics	Business	<input checked="" type="checkbox"/>	<input checked="" type="checkbox"/>
<input checked="" type="checkbox"/>	<input checked="" type="checkbox"/>	RT Impact	Business	<input checked="" type="checkbox"/>	<input checked="" type="checkbox"/>

The **Application Availability** KPI is removed from the view entirely:

The screenshot shows the HP Business Service Management - Service Health interface. The top navigation bar includes 'MyBSM', 'Applications', 'Admin', 'Help', and 'Site Map'. Below the navigation bar, there are tabs for '360° View', 'Top View', 'Watch List', 'EUM Application Support 360 by BPM', 'NOC', '360 by RUM', 'Service Assurance', 'Mobile SME', and 'EUM App'. The main content area is titled 'Hierarchy' and contains a table with the following columns: 'Name', 'Status', 'Acknowledge', 'Application' (with sub-column 'Application Performance'), 'Software' (with sub-columns 'Software Performance' and 'Software Availability'). The table data is as follows:

Name	Status	Acknowledge	Application Application Performance	Software Software Performance	Software Software Availability
Advantage Inc View	-	-	-	-	-
Advantage Inc					

Chapter 5: Views

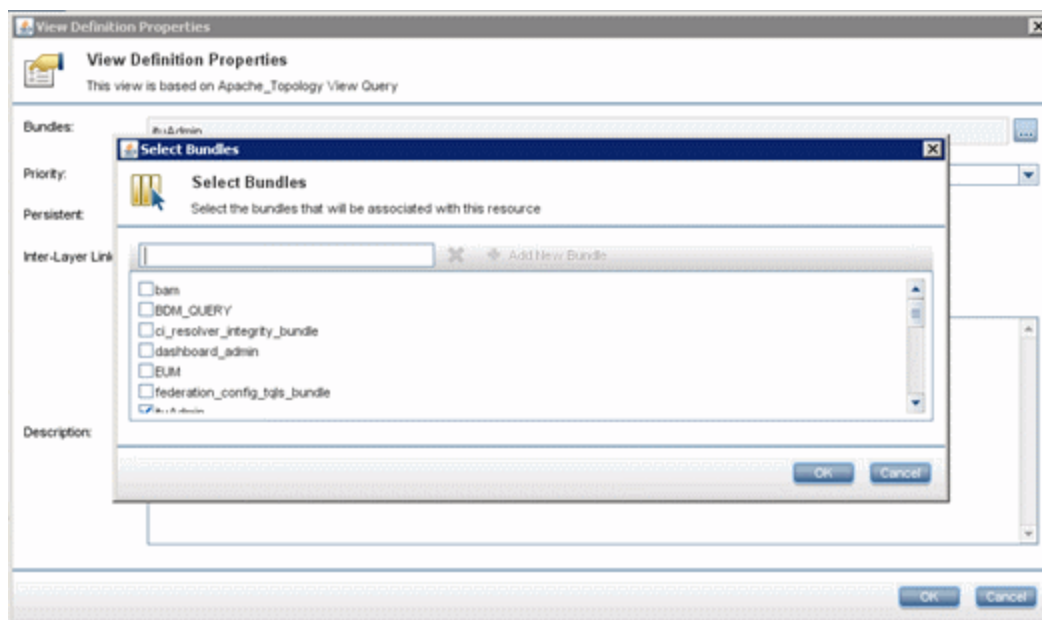
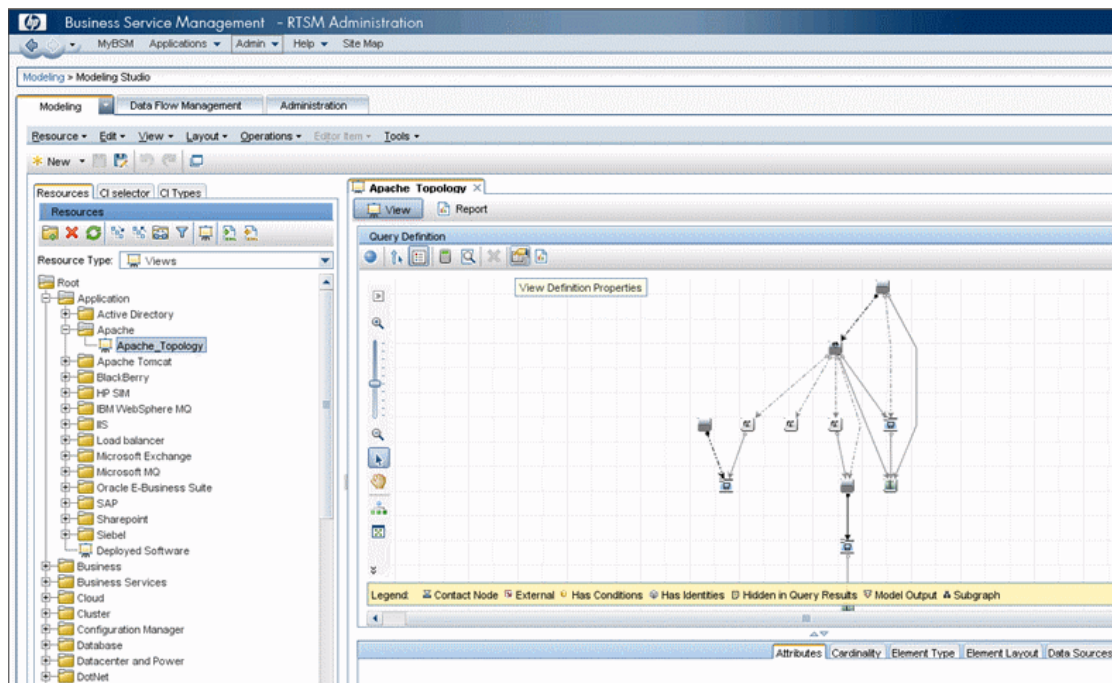
Views are not the main focus of this best practice document; however in order to maximize Service Health's value, it is important to understand the concept behind views, and the motivation behind the different types of BSM views.

- A View is a mechanism for consuming sub-sets of CIs from BSM's configuration management database (RTSM). It enables the user to extract a selected group of CIs that meet specific interest or needs. For example, a view might include all infrastructure components that support a specific business application or service (application support). Another example could be all DB servers in the organization and their storage devices (DBA infra team). Service Health, as well as other BSM components, consumes views as the basic building block.
- Note that not all RTSM views are available to Service Health, but only those which belong to the Service Health bundle. Bundles are a method of grouping TQL queries or views by category. In order for a view to be accessible to a certain BSM application or module it should belong to its bundle. For further details, refer to the BSM documentation (**Modeling > Modeling > Modeling Studio > Building a Business View > Making Views Available in BSM**).

Tip: If you want to reduce the number of views in Service Health, for example if there are too many OOTB discovery views, then you can remove their Service Health bundle.

Working With Views

1. Access **Admin > RTSM Administration > Modeling > Modeling Studio**.
2. Select the view in the **Resources** tab.



Which view type is suitable for your needs?

- Choose a **pattern view** when searching for a specific signature in RTSM (for example, all nodes with 2 IP addresses). The advantage to using a pattern view is that it is dynamic; a view's result is

updated behind the scenes without any user intervention. Note that building pattern views requires an understanding of TQL and RTSM topology.

- **Template-based views** allow the creation of multiple views based on the same template. If you need to create multiple views with the same characteristics, consider whether those can be incorporated into one template. Parameterization lets you define which attributes of the template can be assigned with changing value or content, thus saving repetitive manual work. Naturally, any change to the base template will impact all template-based views.
- **Perspective-based views** allow superimposing certain vantage points (or perspectives) on a collection of CIs. You start with a “root” CI and apply the desired perspectives (whether an OOTB perspective or one you’ve created) on that CI. Perspective-based views are easy and quick to generate, and are recommended when the scope (root) of the view is known in advance, and static.

Note that BSM has a limit of 1000 active TQLs, and each perspective-based view generates 3 or more active TQLs (depending on the scope of applied perspectives). Hence, capacity should be taken into consideration when using perspective-based views.

What are some rules of thumb for creating views?

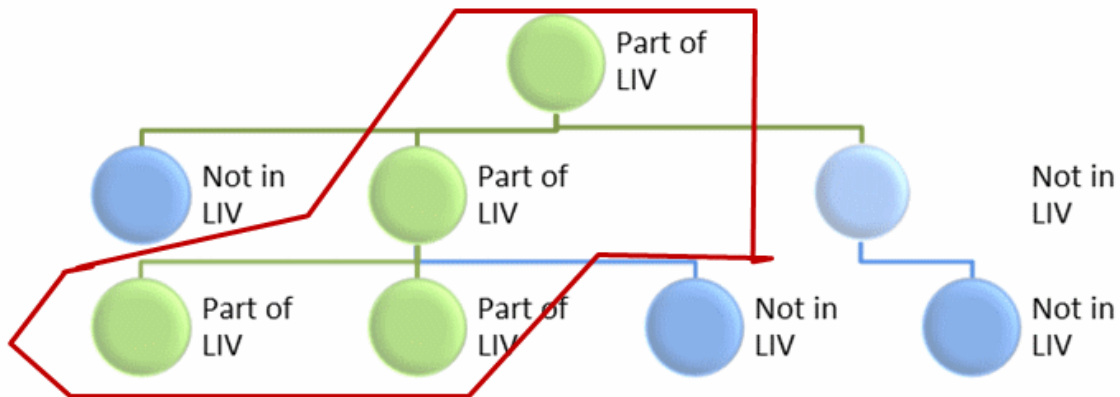
- Limit the number of CIs to no more than 1000. This will allow your view to remain manageable and usable; it is also effective from a capacity perspective, keeping in-memory footprint as small as possible.
- Use View Hierarchy (previously called Folding) to minimize the number of CIs in each layer. This will help you consume the view in Service Health components such as Top View or 360.
- Use “**vertical**” views where appropriate; this refers to the approach of dividing your model and business into “silos” (for example a business application and all its related CIs in one view). A vertical view helps you focus on those elements relevant to your specific needs. Applying this approach allows you to use the Service Health **Watch List** very effectively. You can incorporate multiple vertical views into a high level overview of related business applications, business services, and so on. You can then select a specific watch list element to change context to the vertical view, providing a higher degree of freedom and flexibility when compared to a single model.
- Use “**horizontal**” views where appropriate; horizontal views serve best for users who are interested in a wide view (focused on a specific layer) across the organization. For example, DBAs (all DB servers and related storage devices in the organization), Windows administrators (all Windows servers in the organization), and so on.
- **High level views.** When creating high level views, such as overall business services view for CIO, or critical cross organization infrastructure services view, it is recommended to apply the “less is more” approach. Include the minimal set of items or CIs that will provide the required information or status, gaining simplicity and focus as well as an effective performance footprint.

What is a local impact view (LIV)?

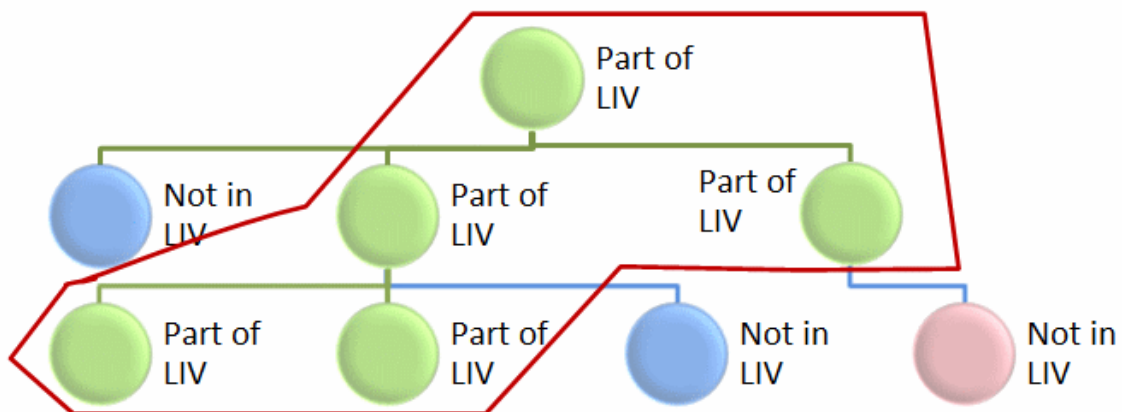
In a LIV, only CIs that are displayed in the view participate in the view's status calculations (KPIs, HIs and the underlying rules); in a LIV what you see is what you get.

Examples:

- Green node: part of LIV (returned by view TQL), participating in view's status calculation
- Blue node: not part of the view and not participating in view's status calculation
- Pink node: not part of LIV (not returned in TQL result set), participating in view's status calculation



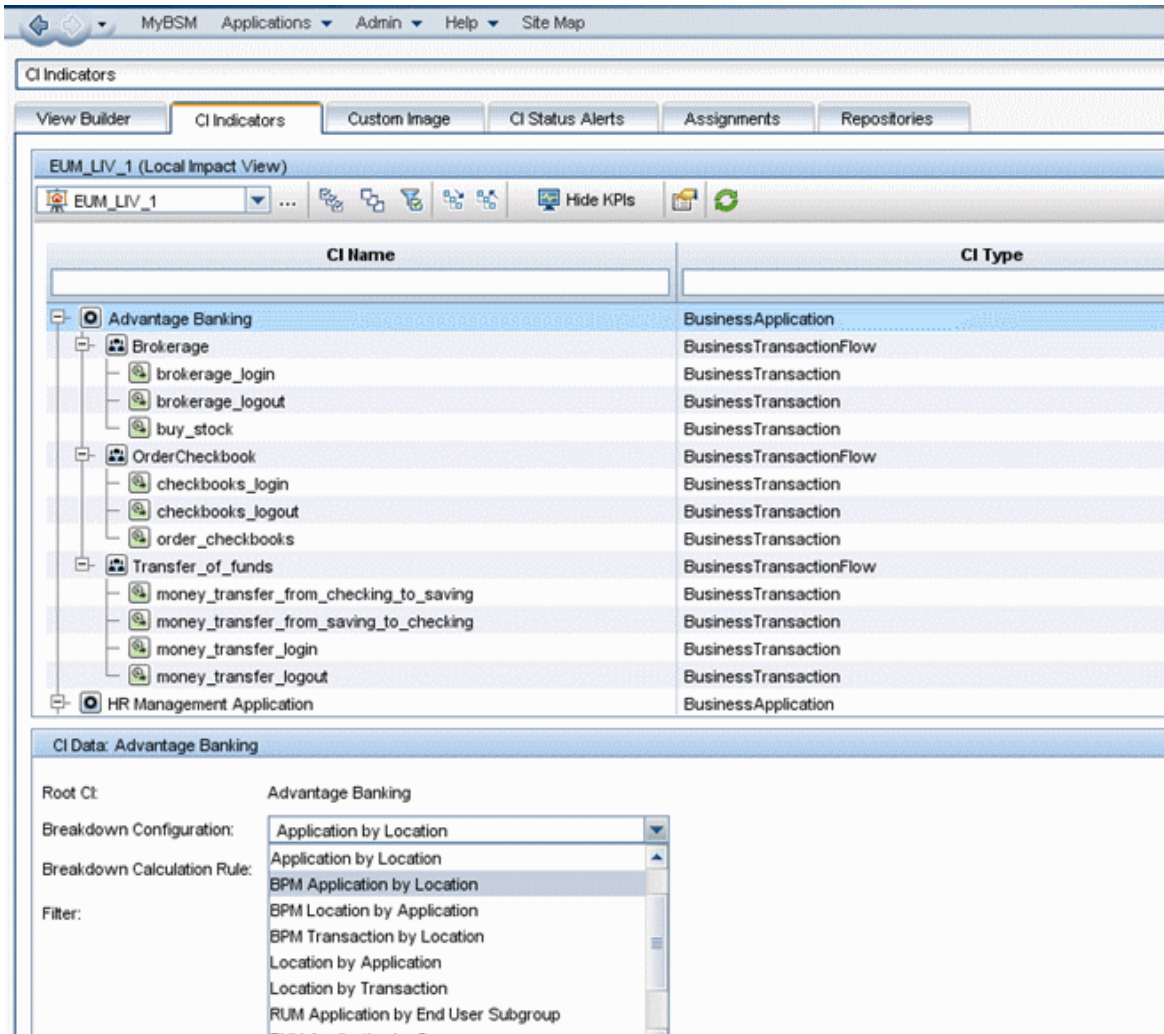
The only exception to the above is where a CI's status calculation relies on KPIs on its child CIs' which are not members of the LIV. In such a case, in order to maintain data integrity, the child CIs' status will be taken into account:



When should you use a Local Impact View?

- You wish to observe the status of only a subset of the Impact model (for example, if you are not interested in Login transaction data or impact as part of Business Application status).
- If you need customized or ad-hoc status calculation (such as a different calculation rule, thresholds, or rule parameters) in addition to the OOTB calculation.
- Breakdown. From BSM v9.0, EUM breakdown was removed from the model (Breakdown CI is no longer part of the class model). LIVs provide you with various breakdown capabilities, such as:
 - More breakdown options than previous versions (see image below).
 - When breakdown is configured for high-level CIs, new child CIs are assigned with breakdown as well.
 - Breakdown can be applied over metric-based HIs only (not events).
 - Breakdown calculation cannot be applied retroactively using historical data prior to when the breakdown was enabled; it is applied on new samples only.

Note: LIV bears a relatively high memory footprint, and should be used as needed (it should be the exception rather than the rule).



View Permissions

Use user groups (**Admin > Platform > Users and Permissions > User Management > Permissions** tab) to assign view permissions. This gives you more control over information access. For example, NOC operators will have access to high level operational views and the ability to drill down for initial triage purposes, while application support will have access to views relevant for their application and the supporting infrastructure.

Chapter 6: MyBSM Planning

Note: This section is a supplement to the detailed guidelines in the MyBSM documentation (see **User Guide > MyBSM > MyBSM Overview**).

Building a MyBSM page requires research and planning, especially in the following aspects:

- Layout
 - How many components you need in your MyBSM page?
 - How much space (real estate) does each component need?
 - How should you arrange the different components in the page in order to be consumed easily? Horizontally, vertically, and/or in tabs?
- Content
 - Determine which components are relevant for the purpose of that particular page. Keep the overall number of components to the minimum that is necessary for the page to remain usable and effective. Note that every component is generating an action in BSM, thus, loading BSM's Gateway servers.
- Component wiring
 - Wiring enables the user to design a flow or a role-specific “work desk”. Configure the components' order, relation and context to reflect the flow of actions and information needed by the function using this page.
 - Use components from different BSM modules to encompass as broad a range as possible of relevant use cases and processes, as implemented in your organization.
- Permissions. Configure access and action permissions to reflect your organization's needs and policies.

In BSM 9.23, if you want specific users to only monitor information, but not to select a view or apply filters on a page, you can apply **Locked** permissions to a user-defined page. This is relevant for pages which include built-in view selectors such as the Service Health components (Top View, Hierarchy, Geographic Map and so on), and the Event Browser.

Chapter 7: Use Cases / Troubleshooting

The purpose of this section is to discuss various use cases or issues we find common based on R&D's field engagements. Our goal is for this section to grow as more popular use cases are gathered by the lab and field.

The corrective technical steps mentioned below are given in more detail throughout this document.

Service Health Not Reflecting Your True Business Health

The underlying assumption for effective use of Service Health is that only true cases of service disruption, or risk for potential disruption, will be reflected in Service Health's components.

If there is a discrepancy between the actual health of your business and the way it is reflected in Service Health, try the following to identify the cause for discrepancy:

- Validate that relevant indicators are contributing to status calculation. For instance, there could be redundant KPIs which are not needed in order to reflect application or service status. For example, if an application owner is interested in his application's availability only, the performance data presented OOTB is not needed, and may add redundant clutter.

The same applies for Health Indicators (HIs).

- Verify that the Service Health rules being used reflect your business logic and need. Service Health OOTB rules aim at a common use case; however you may need to apply a different logic. For example, in a High Availability architecture application, the OOTB Availability KPI is calculated using the Worst Status Rule. However, from the perspective of the application owner and your organization, it may be perfectly acceptable if one of the application interfaces is down, as long as the application is available via other interfaces. In such a case, you would replace the OOTB rule for this KPI with the Best Status Rule.
- Confirm that only relevant CIs are participating in the view. Consider using pattern-based or perspective-based views in order to filter out irrelevant CIs and unneeded content.

Exporting Service Health Data

If you need to export Service Health's data (usually for the purpose of integration with external tools), Service Health exposes an API to query its database for view information and data. For technical details and examples, refer to the product documentation (**Extensibility Guide > Service Health > Service Health External APIs > Service Health Database Query API**). The API will return requested data in XML format which can easily be formatted into any desired format.

The following example will return data on the End User Monitors view, including CIs' KPIs attributes including status, business rule, and last status change:

[http://GWServer/topaz/bam/BAMOpenApi?customerId=1&userName=<usr>&password=<pwd>&viewName=End User Monitors&command=getNodes&addRecallAtts=y&depth=20&forcedPropogationDepth=20&layout=hierarchical&showTooltip=true](http://GWServer/topaz/bam/BAMOpenApi?customerId=1&userName=<usr>&password=<pwd>&viewName=End+User+Monitors&command=getNodes&addRecallAtts=y&depth=20&forcedPropogationDepth=20&layout=hierarchical&showTooltip=true)

```
- <dimension name="Application Performance" status="15" id="6">
  null
  - <tooltip>
    - <body>
      - <entry key="Status">
        <![CDATA[ Warning  ]]>
      </entry>
      - <entry key="Business Rule">
        <![CDATA[ Worst Status Rule  ]]>
      </entry>
      - <entry key="Last status changed">
        <![CDATA[ 8/27/2013 10:54 AM  ]]>
      </entry>
    </body>
  </tooltip>
  - <trend>
    - <entry key="Trend">
      <![CDATA[ Stable  ]]>
    </entry>
  </trend>
  - <history>
    - <entry key="History type">
      <![CDATA[ Worst  ]]>
    </entry>
    - <entry key="Historical worst">
      <![CDATA[ Warning  ]]>
    </entry>
  </history>
</dimension>
```


Send Documentation Feedback

If you have comments about this document, you can [contact the documentation team](#) by email. If an email client is configured on this system, click the link above and an email window opens with the following information in the subject line:

Feedback on Service Health Administration - Best Practices (Business Service Management 9.26)

Just add your feedback to the email and click send.

If no email client is available, copy the information above to a new message in a web mail client, and send your feedback to Sw-doc@hp.com.

We appreciate your feedback!