



HP Operations Manager i health driven vs. event driven KPIs

Martin Bosler, HP Software, Operations Bridge Architect

agenda

What is the concept behind different KPIs?

HPs recommendation

Benefits of using both types of KPIs



Event driven vs. Health driven KPIs

What's the difference?

Event driven KPIs	Health driven KPIs
Show status based on event management process Are there open events?	Show status based on true, probed health How is the service currently doing?
Directly calculated based on active events	Calculated based on Health Indicators (HIs) set by incoming events and/or incoming metrics
Severity is determined based on “most critical” active event matching the definition.	Severity is determined by severity of most recent HI value set by incoming data.
Status not propagated to parent per default	Status is propagated to parent per default
Get's green if all corresponding non-normal events are resolved/closed	Get's green if “normal” HI value is set by incoming data Exceptional: can be reset using API or “reset HI” op.
Examples: <ul style="list-style-type: none">unresolved events KPIunassigned events KPIcustom event count-based KPI (since 9.21) based on subcategory event attribute	Examples: <ul style="list-style-type: none">System AvailabilitySystem Performance

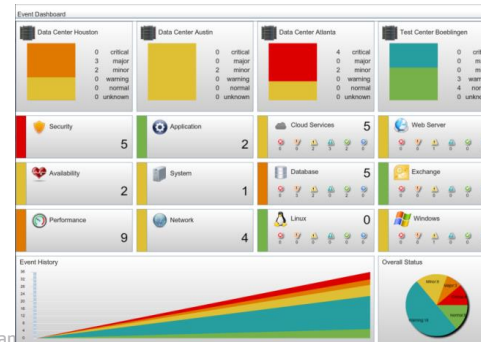
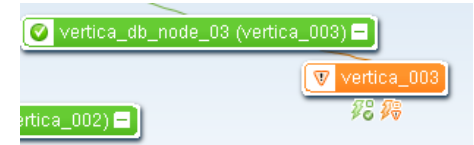
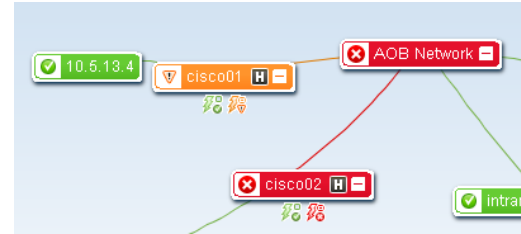


Overall status of a Configuration Item

How is the CI colored within service health UIs?

- Overall status is calculated based on ALL KPIs per default
 - It is possible to configure per view:
 - what KPIs will be shown
 - what KPIs will be used to calculate the overall status
- E.g. It is possible to only use event driven KPIs for overall status

Note: Event Dashboard is purely based on events (i.e. KPIs are not used for status calculation here)



Pitfalls

What we observe

- HIs are used even though current health is not constantly probed (e.g. no good event)
 - HIs will not get “green” when they should
 - Users need to reset HIs manually
- Health driven KPIs are assumed to behave as event driven KPIs
Status’ are assumed to stay in sync rather than being complementary
 - may block opportunity to get value of using different status
- Overall status calculation in views is not adjusted to user needs
- Functionality to introduce custom, event driven KPIs (based on sub-category) is not known
- Functionality to enable status propagation for event driven KPIs is not known

→ HP is going to simplify the administration of service health in future



Recommendations

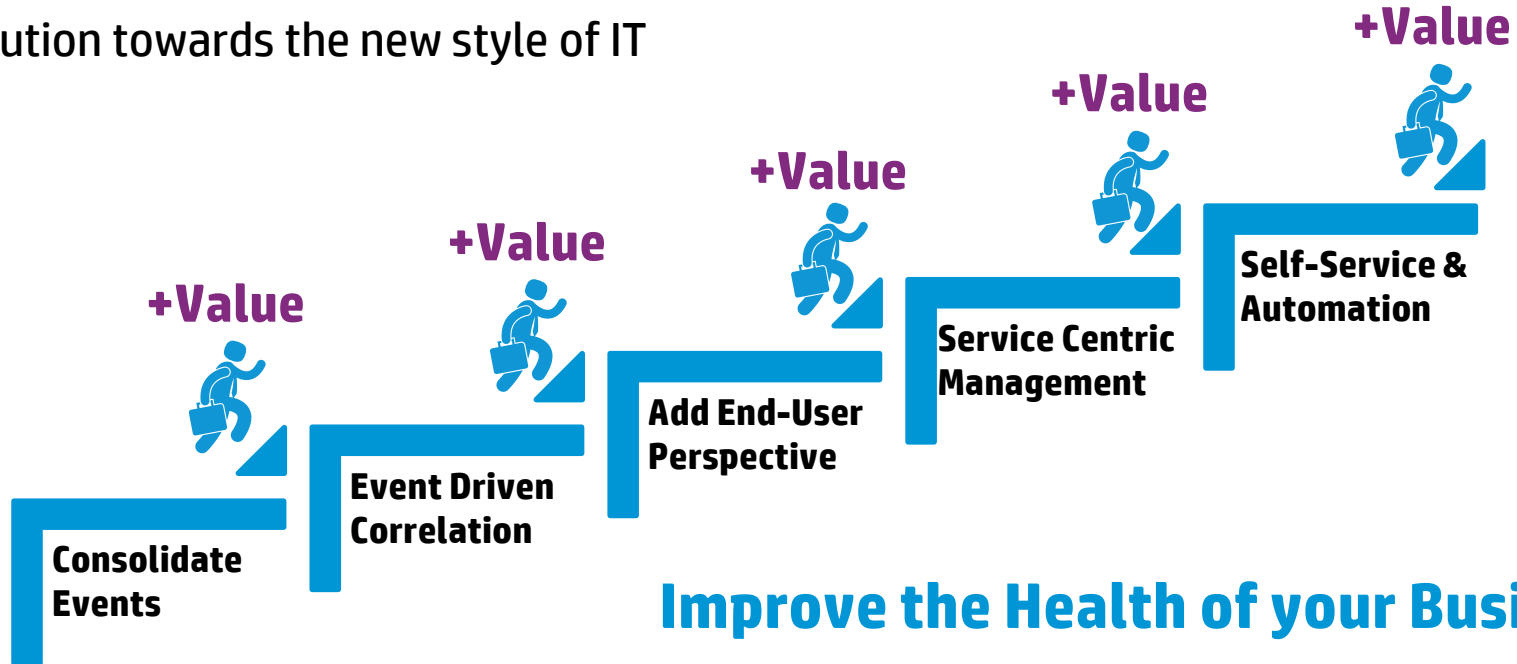
Complementing event driven status with “true” probed health

1. Only set HIs if there is a continuously running monitoring that will also provide a “good” status. Use ETIs otherwise.
2. Use event dashboard for event driven status views
3. Consider health driven KPIs as an additional, complementary status
4. Don't use “reset HI” as a standard operation in your workflows
5. Define what status should drive the overall status of a CI
6. Consider to enable status propagation for event driven KPIs



ACT: Step up the value with OpsBridge

Evolution towards the new style of IT



**Improve the Health of your Business
with reduced cost and better MTTR**



Benefits of using both types of KPIs

Get additional perspectives as needed

- **Event driven status shows exactly what is the status with regards to actionable events (or incidents)**
- **Health driven status can provide additional information about how the service is currently doing**
- **Allows de-coupling of event management process (unassigned, unresolved events) from monitored health**
- **“True” current health is valuable additional validation
E.g. Did the fix really solve the issue?**



Thank you!

hp.com/go/omi

Community: <https://hpln.hp.com/group/bsm-community-content>



