

---

# HP UCA Automation



**Version 1.2**

## **UCA Autoconsole CA Guide for Linux (RHEL 6.4)**

**Edition: 1.0**

**April 2015**

© Copyright 2015 Hewlett-Packard Development Company, L.P.

---

# Legal Notices

## Warranty

The information contained herein is subject to change without notice. The only warranties for HP products and services are set forth in the express warranty statements accompanying such products and services. Nothing herein should be construed as constituting an additional warranty. HP shall not be liable for technical or editorial errors or omissions contained herein.

## License Requirement and U.S. Government Legend

Confidential computer software. Valid license from HP required for possession, use or copying. Consistent with FAR 12.211 and 12.212, Commercial Computer Software, Computer Software Documentation, and Technical Data for Commercial Items are licensed to the U.S. Government under vendor's standard commercial license.

## Copyright Notices

© Copyright 2014 Hewlett-Packard Development Company, L.P.

## Trademark Notices

Adobe®, Acrobat® and PostScript® are trademarks of Adobe Systems Incorporated.

Red Hat® and the Red Hat "Shadow Man" logo are registered trademarks of Red Hat, Inc. in the United States and other countries.

Linux is a registered trademark of Linus Torvalds.

HP-UX Release 10.20 and later and HP-UX Release 11.00 and later (in both 32 and 64-bit configurations) on all HP 9000 computers are Open Group UNIX 95 branded products.

Java™ is trademark of Oracle and/or its affiliates.

Microsoft®, Windows® and Windows NT® are U.S. registered trademarks of Microsoft Corporation.

Oracle® is a registered U.S. trademark of Oracle Corporation, Redwood City, California.

UNIX® is a registered trademark of The Open Group.

X/Open® is a registered trademark, and the X device is a trademark of X/Open Company Ltd. in the UK and other countries.

# Contents

<b>Legal Notices .....</b>	<b>2</b>
<b>Contents .....</b>	<b>3</b>
<b>Tables .....</b>	<b>4</b>
<b>Figures .....</b>	<b>5</b>
<b>Preface .....</b>	<b>6</b>
Intended audience .....	6
Software versions .....	6
Typographical conventions.....	6
Associated documents.....	6
Support .....	6
<b>Chapter 1 .....</b>	<b>8</b>
<b>Solution overview .....</b>	<b>8</b>
1.1 Deliverables.....	9
<b>Chapter 2 .....</b>	<b>10</b>
<b>Installing UCA Autoconsole CA .....</b>	<b>10</b>
<b>Chapter 3 .....</b>	<b>11</b>
<b>Configuring UCA-Autoconsole CA .....</b>	<b>11</b>
<b>Chapter 4 .....</b>	<b>12</b>
<b>Uninstalling UCA Autoconsole CA .....</b>	<b>12</b>

# Tables

Table 1 Software versions ..... 6

# Figures

Figure 1 Solution overview .....	8
----------------------------------	---

# Preface

This guide describes how to install, configure, and uninstall UCA Autoconsole CA.

Product Name: UCA Automation

Product Version: 1.2

## Intended audience

This document is intended for the delivery team and the administrators who install and configure UCA Autoconsole CA.

## Software versions

The term UNIX is used as a generic reference to the operating system, unless otherwise specified.

The software versions referred to in this document are as follows:

Product version	Supported operating systems
UCA Automation 1.2	Linux Red Hat Enterprise Linux Server release 6.4

**Table 1 Software versions**

## Typographical conventions

<code>Courier Text</code>	It is used for filenames and their contents, computer inputs or outputs, program codes, and so on.
<i>Italicized text</i>	It is used for labels, parameters, emphasized text, and replaceable text.
<b>bold text</b>	It is used to indicate navigation options in the interfaces; for example, the text appearing in buttons and menu items.
<angle brackets>	Indicates generic variable names that must be substituted by real values or strings.

## Associated documents

The following documents contain useful reference information:

OSS Open Mediation OSS Open Mediation V620L01 Installation and Configuration Guide

## Support

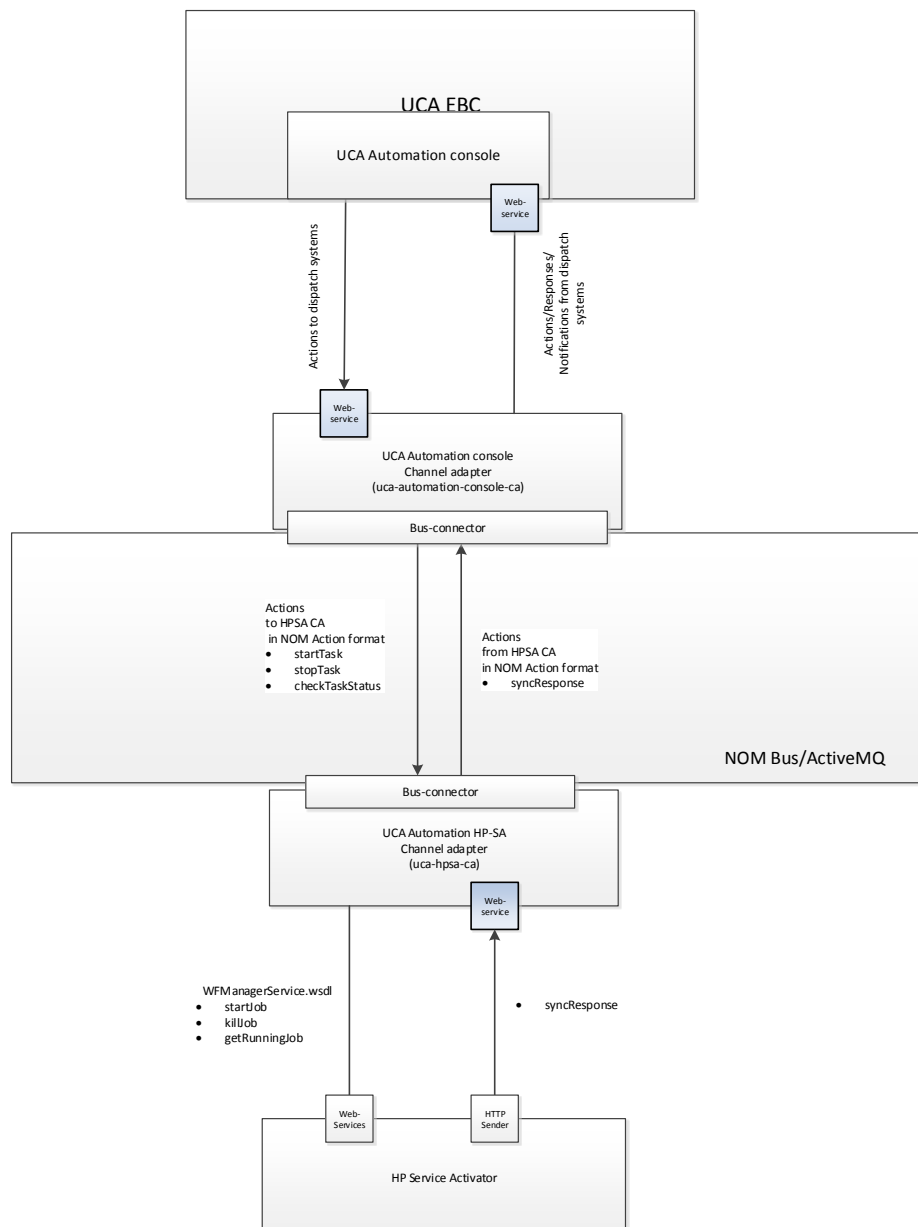
Visit the HP Software Support Online Web site at [www.hp.com/go/hpsoftwaresupport](http://www.hp.com/go/hpsoftwaresupport) for contact information, and details about HP Software products, services, and support.

The Software support area of the Software Web site includes the following:

- Downloadable documentation.
- Troubleshooting information.
- Patches and updates.
- Problem reporting.
- Training information.
- Support program information.

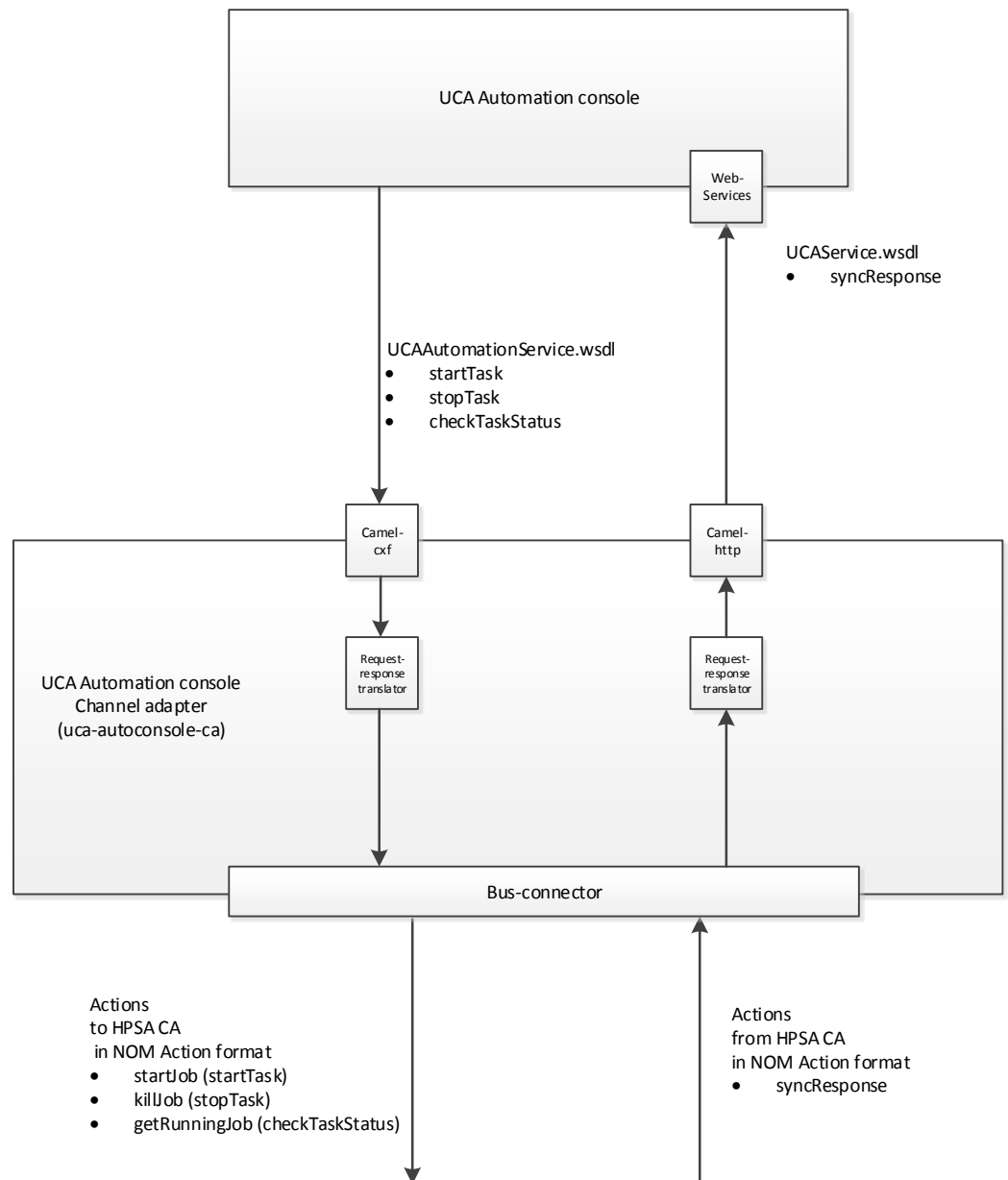
## Solution overview

The following is the high-level solution overview.



**Figure 1 Solution overview**

The following is the channel adapter internal structure. It consists from the number of components provided by NOM SDK to transform data, bind to specific Web-Services, and communicate with NOM Bus.



## 1.1 Deliverables

The `uca-autoconsole-ca-2.0.0-L.tar` contains a channel adaptor for integration with UCA console in scope of UCA Automation solution which is packed in RPM for specific operating system.

## Chapter 2

# Installing UCA Autoconsole CA

You can install the UCA Autoconsole CA manually using the following procedure.

Run the commands mentioned in this section as root user or a user who has the privileges to install RPM files and NOM IPs.

Extract the `uca-autoconsole-ca-2.0.0-L.tar` file using the following command:

```
tar xvf uca-autoconsole-ca-2.0.0-L.tar
```

Install the RPM to the `openmediation-70` directory using the following command.

```
rpm -i --relocate /opt/ngoss/= /opt/openmediation-70/  
ngossuca-autoconsole-ca-2.0.0.noarch.rpm
```

Use the following commands to install UCA Autoconsole CA.

```
nom admin --install-ip uca-autoconsole-ca-20  
nom admin --install-ip-in-container uca-autoconsole-ca-20  
nom_admin --deploy-ip-in-container uca-autoconsole-ca-20
```

For some very specific needs UCA Autoconsole CA can be installed by a non-root user.

When installing UCA Automation as non-root user, the following limitations must be understood

The system RPM database is not accessible by a non-root user. As a consequence, when installation is performed by a non-root user, a specific RPM database must be specified. The default RPM repository for non-root installation is set to `~/.rpmdb` (where `~` is the user home directory). A new RPM database can be initialized as follows

```
rpm --initdb --dbpath <alternate rpm db>
```

The new rpm db path can be specified when installing the CA

```
rpm -i --nodeps --dbpath <alternate rpm db> --relocate  
/opt/ngoss/= /app/NOM/opt/openmediation-70/ ngossuca-  
autoconsole-ca-2.0.0.noarch.rpm
```

# Configuring UCA-Autoconsole CA

Use the following procedure to configure UCA-Autoconsole CA.

Configure the `<installation package deployment directory>/etc/config.properties` property file with the following parameters:

- **uca.uca-automation.host**—UCA console CA host for the exposed web-service.
- **uca.uca-automation.port**—UCA console CA port for the exposed web-service.
- **uca.console.service**—Name of the UCA console service.
- **uca.console.host**—UCA Automation console host or IP address.
- **uca.console.port**—UCA Automation console port number.

To apply the new configuration, redeploy the channel adaptor by using the `nom_admin` tool.

```
nom admin --undeploy-ip-in-container uca-autoconsole-ca-20  
nom_admin --deploy-ip-in-container uca-autoconsole-ca-20
```

The default values are as follows:

```
# connectivity settings  
uca.uca-automation.host=localhost  
uca.uca-automation.port=12500  
uca.console.service=UCA_Automation_Foundation_UCA-V1.2-1A-  
UCAAutomation/UCAService  
uca.console.host=localhost  
uca.console.port=8888
```

# Uninstalling UCA Autoconsole CA

Perform the following steps to manually uninstall UCA Autoconsole CA.

Undeploy the channel adaptor from any OSS Open Mediation container where it is deployed.

```
nom_admin --undeploy-ip-in-container uca-autoconsole-ca-20
```

Uninstall the channel adaptor from any OSS Open Mediation container.

```
nom_admin --remove-ip-in-container uca-autoconsole-ca-20
```

Uninstall the channel adapter from OSS Open Mediation.

```
nom_admin --remove-ip uca-autoconsole-ca-20
```

Erase the package from the system.

```
rpm -e ngossuca-autoconsole-ca-2.0.0-RHEL5.noarch
```

For a non-root user specify the alternate rpm database path

```
rpm -e -dbpath <alternate rpm db> ngossuca-autoconsole-ca-2.0.0-RHEL5.noarch
```