

# HP Project and Portfolio Management Center

Software Version: 9.31.0002

## Release Notes

Document Release Date: July 2015  
Software Release Date: July 2015



## Legal Notices

### Warranty

The only warranties for HP products and services are set forth in the express warranty statements accompanying such products and services. Nothing herein should be construed as constituting an additional warranty. HP shall not be liable for technical or editorial errors or omissions contained herein.

The information contained herein is subject to change without notice.

### Restricted Rights Legend

Confidential computer software. Valid license from HP required for possession, use or copying. Consistent with FAR 12.211 and 12.212, Commercial Computer Software, Computer Software Documentation, and Technical Data for Commercial Items are licensed to the U.S. Government under vendor's standard commercial license.

### Copyright Notice

© 1997 - 2015 Hewlett-Packard Development Company, L.P.

### Trademark Notices

Adobe® is a trademark of Adobe Systems Incorporated.

Microsoft® and Windows® are U.S. registered trademarks of Microsoft Corporation.

UNIX® is a registered trademark of The Open Group.

## Documentation Updates

The title page of this document contains the following identifying information:

- Software Version number, which indicates the software version.
- Document Release Date, which changes each time the document is updated.
- Software Release Date, which indicates the release date of this version of the software.

To check for recent updates or to verify that you are using the most recent edition of a document, go to: <https://softwaresupport.hp.com/>.

This site requires that you register for an HP Passport and to sign in. To register for an HP Passport ID, click **Register** on the HP Support site or click **Create an Account** on the HP Passport login page.

You will also receive updated or new editions if you subscribe to the appropriate product support service. Contact your HP sales representative for details.

## Support

Visit the HP Software Support site at: <https://softwaresupport.hp.com>.

This website provides contact information and details about the products, services, and support that HP Software offers.

HP Software online support provides customer self-solve capabilities. It provides a fast and efficient way to access interactive technical support tools needed to manage your business. As a valued support customer, you can benefit by using the support website to:

- Search for knowledge documents of interest
- Submit and track support cases and enhancement requests
- Download software patches
- Manage support contracts
- Look up HP support contacts
- Review information about available services
- Enter into discussions with other software customers
- Research and register for software training

Most of the support areas require that you register as an HP Passport user and to sign in. Many also require a support contract. To register for an HP Passport ID, click **Register** on the HP Support site or click **Create an Account** on the HP Passport login page.

To find more information about access levels, go to: <https://softwaresupport.hp.com/web/softwaresupport/access-levels>.

**HP Software Solutions Now** accesses the HPSW Solution and Integration Portal website. This site enables you to explore HP Product Solutions to meet your business needs, includes a full list of Integrations between HP Products, as well as a listing of ITIL Processes. The URL for this website is <http://h20230.www2.hp.com/sc/solutions/index.jsp>.

# Contents

<b>Chapter 1: Overview</b> .....	<b>4</b>
<b>Chapter 2: Installation Notes</b> .....	<b>5</b>
<b>Chapter 3: Enhancements</b> .....	<b>6</b>
Enhancements in Version 9.31.0001 .....	6
Enhanced Calculation of Forecast Labor Cost .....	6
Generating Java Dumps .....	7
Enhancements to Microsoft Project Plug-in .....	7
Specifying Task Type When Importing Tasks from PPM Center .....	8
Specifying the Sequence of Actuals Fields When Importing Tasks from PPM Center .....	9
Enabling Data Trace Logging .....	10
HP Object Migrator 12.2 Available on HPLN .....	11
Enhancements in Version 9.31.0002 .....	11
<b>Chapter 4: Fixes</b> .....	<b>12</b>
Fixes in Version 9.31.0001 .....	12
Fixes in Version 9.31.0002 .....	22
<b>Chapter 5: Known Problems and Limitations</b> .....	<b>28</b>
Known Problems and Limitations in 9.31.0001 .....	28
<b>Chapter 6: Documentation Errata</b> .....	<b>29</b>
<b>Send Documentation Feedback</b> .....	<b>32</b>

## Chapter 1: Overview

This document is an overview of the changes made to Project and Portfolio Management Center (PPM Center) for version 9.31.0002. It contains important information that is not included in the manuals.

You can find information about the following in this document:

["Installation Notes" on page 5](#)

["Enhancements" on page 6](#)

["Fixes" on page 12](#)

["Known Problems and Limitations" on page 28](#)

["Documentation Errata" on page 29](#)

## Protecting Your Deployment from Security Vulnerabilities

Make sure you take the necessary precautions to protect your PPM Center deployment from general security vulnerabilities, especially those related to Web server and related infrastructure vulnerabilities. Patch and configure your Web server's operating system and DNS servers to prevent malicious attacks that could put your organization and data at risk. You can take such steps as disabling unused ports or enabling SSL in your environment. Consult your Web server vendor for the latest patches to prevent harmful attacks such as cross-site scripting.

## Chapter 2: Installation Notes

This procedure includes steps that are valid for PPM Center version 9.31.0002.

**Caution:** PPM Center version 9.31 is required before you can apply version 9.31.0002 on top of it.

To install version 9.31.0002:

1. Back up your database.
2. Stop the PPM Server. The patch cannot be installed on an active server,
3. Copy the patch file `ppm-931-patch0002.jar` to the `<PPM_Home>` directory. This is the directory where the PPM Server is installed.
4. Change to the `<PPM_Home>/bin` directory.
5. Start the installation using the following command:  

```
sh ./kDeploy.sh -i patch0002
```
6. Follow the on-screen instructions to complete the patch installation.
7. Start the PPM Server.

**Note:** HP recommends that you back up your customized files including scripts before applying 9.31.0002.

## Chapter 3: Enhancements

### Enhancements in Version 9.31.0001

The following enhancements are included in PPM Centerversion 9.31.0002:

- ["Enhanced Calculation of Forecast Labor Cost" below](#)
- ["Generating Java Dumps" on the next page](#)
- ["Enhancements to Microsoft Project Plug-in " on the next page](#)
- ["HP Object Migrator 12.2 Available on HPLN" on page 11](#)

### Enhanced Calculation of Forecast Labor Cost

The forecast labor cost of a staffing profile equals the total sum of forecast labor costs of all positions in this staffing profile. PPM calculates the forecast labor cost of a position as follows:

Forecast labor cost of a position = Sum of (Total assignments \* Cost rate of the resource/position+ Unmet demand \* Cost rate of the position)

If there is over-allocation on assignments, the unmet demand value becomes negative. In previous versions, PPM ignores the negative value (does not include the negative value) in the calculation of forecast labor cost.

In version 9.31.0001, you can decide whether negative unmet demand value should be ignored by using the following parameter in the `server.conf` file:

Parameter Name	Usage, Description	Value
IGNORE_NEGATIVE_UNMET_DEMAND	<p>If you set this parameter to <code>true</code>, PPM ignores negative unmet demand value in the calculation of forecast labor cost.</p> <p>If you set this parameter to <code>false</code>, PPM does not ignore negative unmet demand value (regards the negative unmet demand value as it is) in the calculation of forecast labor cost.</p>	<p>Default value: <code>true</code></p> <p>Valid values: <code>true</code>, <code>false</code></p>

## Generating Java Dumps

PPM Center 9.31.0001 provides the following two simple ways for you to generate Java dumps (heap dumps and thread dumps):

**Note:** Java dumps can be generated for starting PPM server only.

- Using the command `sh .\kGenJavaDump.sh`
  - a. Change to the `<PPM_Home>/bin` directory.
  - b. Run the command: `sh .\kGenJavaDump.sh`
- Using the Administration Console
  - a. Log on to PPM Center.
  - b. From the menu item, select **Open > Administration > Administration Console**.
  - c. Select **Support Task > Generate Java Dumps**.
  - d. Click **Generate**.

The generated Java dumps are collected in the `<PPM_HOME>\bin\support\javadumps` folder:

- The heap dump files are in the following format:  
`<NODE_NAME>_<PID>_<TIMESTAMP>_heap.hprof`
- The thread dump files are in the following format:  
`<NODE_NAME>_<PID>_<TIMESTAMP>_thread.hprof`

## Enhancements to Microsoft Project Plug-in

PPM Center 9.31.001 introduces the following three enhancements to Microsoft Project plug-in:

- ["Specifying Task Type When Importing Tasks from PPM Center"](#) on the next page
- ["Specifying the Sequence of Actuals Fields When Importing Tasks from PPM Center"](#) on page 9
- ["Enabling Data Trace Logging"](#) on page 10

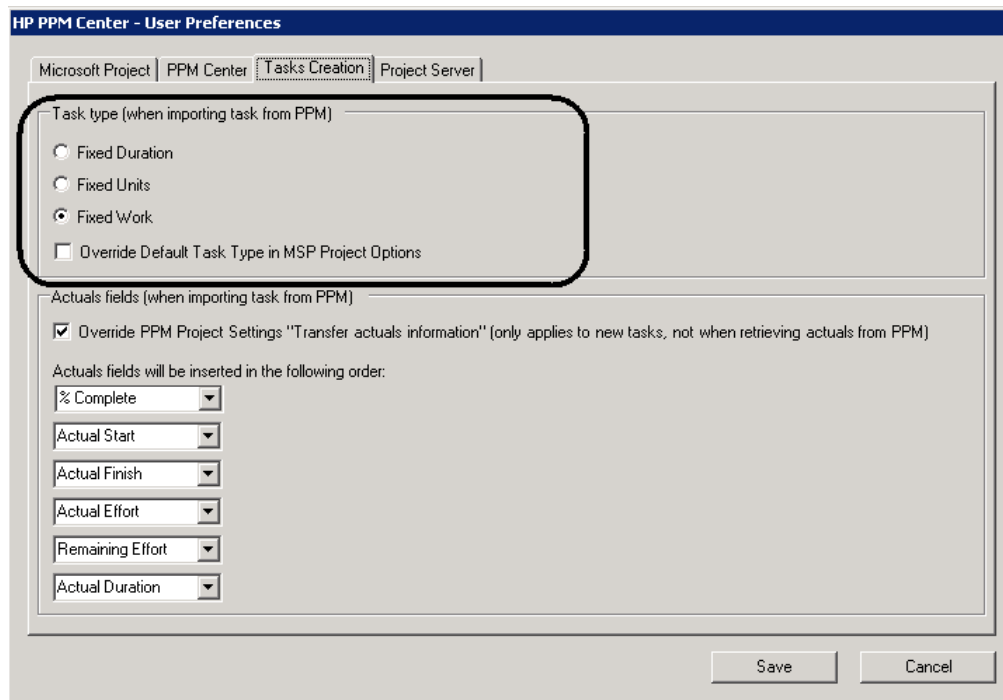
**Note:** Before you use these enhancements, you should download the updated Microsoft Project plug-in from PPM Center 9.31.0001 by selecting **Open > Administration > Download Microsoft Project Plug-in** in the menu bar.

For details about downloading and installing Microsoft Project plug-in, see *HP Project Management User's Guide* for version 9.30.

## Specifying Task Type When Importing Tasks from PPM Center

Starting from 9.31.0001, you can specify the task type for the tasks to be imported from PPM Center to Microsoft Project.

1. Open the project in Microsoft Project.
2. In the Add-Ins tab, select **HP PPM Center > User Preferences**.
3. In the Tasks Creation tab, Task type section, select the task type for the imported tasks.



4. (Optionally) Select the option **Override Default Task Type in MSP Project Options** if you want to change the default task type in MSP Project Options to what you select in step 3.



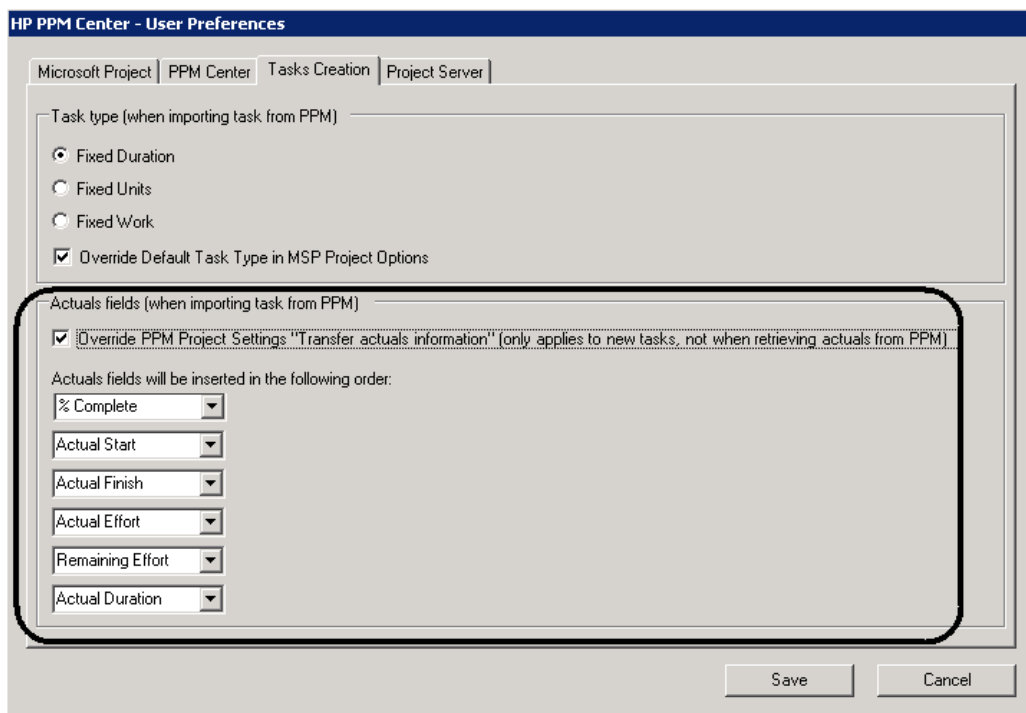
For example, if you check this option and select Fixed Work as the task type, the default task type in MSP Project Options will be changed to Fixed Work.

5. Click **Save**.

## Specifying the Sequence of Actuals Fields When Importing Tasks from PPM Center

With the updated Microsoft Project plug-in, you can specify the sequence of actuals fields to be inserted in the Microsoft Project. To specify the sequence:

1. Open the project in the Microsoft Project.
2. In the Add-Ins tab, select **HP PPM Center > User Preferences**.
3. In the Tasks Creation tab, Actual fields section, specify the sequence of the actuals fields. The actual field on the top will be inserted first while the actual field on the bottom will be inserted last.



You cannot specify the sequence of actuals fields unless you select the option **Override PPM Project Settings....** If you select the option, it only applies to new tasks and is not applicable when

you retrieve actuals from PPM. If you deselect the option, you have to follow the setting of **Transfer actuals information** in PPM project.

4. Click **Save**.

## Enabling Data Trace Logging

You can enable logging for importing tasks from PPM Center. With this log available, you can see what and how (in which sequence) tasks information is imported.

1. Open the project in the Microsoft Project.
2. In the Add-Ins tab, select **HP PPM Center > User Preferences**.
3. In the Microsoft Project tab, select **Enable logging** and **Enable data trace logging**.

The **Enable data trace logging** option is disabled unless you select the **Enable logging** option. By default, the **Enable logging** option is not selected.

4. (Optionally) Select the directory in which the log files are saved.
5. Click **Save**.

After you import tasks from PPM Center, the log is recorded in the `msp.log` file located in the directory you specified.

The following is an example of the log for importing tasks.

```
2015-05-07 14:54:52,453 [VSTA_Main] DEBUG =====Start import Tasks=====
2015-05-07 14:54:52,453 [VSTA_Main] DEBUG Default Task type:FixedDuration
2015-05-07 14:54:52,469 [VSTA_Main] DEBUG Task type:FixedDuration
2015-05-07 14:54:52,469 [VSTA_Main] DEBUG Applying ResourceName...
2015-05-07 14:54:52,469 [VSTA_Main] DEBUG ResourceName value: admin
2015-05-07 14:54:52,469 [VSTA_Main] DEBUG After Applying ResourceName value: admin
2015-05-07 14:54:52,469 [VSTA_Main] DEBUG -----Start SetTaskScheduleData-----
2015-05-07 14:54:52,469 [VSTA_Main] DEBUG Applying Duration...
2015-05-07 14:54:52,469 [VSTA_Main] DEBUG Duration value: PT96HOMOS
2015-05-07 14:54:52,469 [VSTA_Main] DEBUG After Applying Duration value: 5760
2015-05-07 14:54:52,469 [VSTA_Main] DEBUG Applying Start...
2015-05-07 14:54:52,469 [VSTA_Main] DEBUG Start value: 2015-04-10T08:00:00
2015-05-07 14:54:52,469 [VSTA_Main] DEBUG After Applying Start value: 4/10/2015 8:00:00 AM
2015-05-07 14:54:52,469 [VSTA_Main] DEBUG Applying Finish...
2015-05-07 14:54:52,469 [VSTA_Main] DEBUG Finish value: 2015-04-27T16:00:00
2015-05-07 14:54:52,469 [VSTA_Main] DEBUG After Applying Finish value: 4/27/2015 4:00:00 PM
2015-05-07 14:54:52,469 [VSTA_Main] DEBUG -----End SetTaskScheduleData-----
2015-05-07 14:54:52,485 [VSTA_Main] DEBUG -----Start set Work & Actual data-----
2015-05-07 14:54:52,485 [VSTA_Main] DEBUG Applying Work...
2015-05-07 14:54:52,485 [VSTA_Main] DEBUG Work value: PT16HOMOS
2015-05-07 14:54:52,485 [VSTA_Main] DEBUG After Applying Work value: 960
2015-05-07 14:54:52,485 [VSTA_Main] DEBUG Applying percentComplete ...
2015-05-07 14:54:52,485 [VSTA_Main] DEBUG Applying actualStart ...
2015-05-07 14:54:52,485 [VSTA_Main] DEBUG actualStart Value:
2015-05-07 14:54:52,485 [VSTA_Main] DEBUG After Applying ActualStart value: NA
2015-05-07 14:54:52,485 [VSTA_Main] DEBUG Applying actualFinish ...
2015-05-07 14:54:52,485 [VSTA_Main] DEBUG actualFinish Value:
2015-05-07 14:54:52,485 [VSTA_Main] DEBUG After Applying ActualFinish value: NA
2015-05-07 14:54:52,485 [VSTA_Main] DEBUG Applying actualWork ...
2015-05-07 14:54:52,485 [VSTA_Main] DEBUG actualWork Value: PTOHOMOS
2015-05-07 14:54:52,485 [VSTA_Main] DEBUG After Applying ActualWork value: 0
2015-05-07 14:54:52,485 [VSTA_Main] DEBUG Applying remainingWork ...
2015-05-07 14:54:52,485 [VSTA_Main] DEBUG remainingWork Value:
2015-05-07 14:54:52,485 [VSTA_Main] DEBUG After Applying RemainingWork value: 960
2015-05-07 14:54:52,485 [VSTA_Main] DEBUG Applying actualDuration ...
2015-05-07 14:54:52,485 [VSTA_Main] DEBUG After Applying actualDuration value: 0
2015-05-07 14:54:52,485 [VSTA_Main] DEBUG -----End set Work & Actual data-----
2015-05-07 14:54:52,485 [VSTA_Main] DEBUG =====End import Tasks=====
```

## HP Object Migrator 12.2 Available on HPLN

HP Object Migrator 7.5 stops working on Oracle E-Business Suite 12.2 or later. If you use Oracle E-Business Suite 12.2 or later, you must install or upgrade to HP Object Migrator 12.2.

Now the install and upgrade bundle of HP Object Migrator 12.2 (beta version) is available on HPLN. You can visit the following web site to download the install or upgrade bundle and the related documents:

<https://hpln.hp.com/contentoffering/hp-object-migrator>

## Enhancements in Version 9.31.0002

There are no enhancements implemented in version 9.31.0002.

## Chapter 4: Fixes

### Fixes in Version 9.31.0001

The following items (identified by a tracking number) are fixed in PPM Center version 9.31.0001.

#### Costing

CR	Problem	Solution
QCCR1L57135	The recalculation of projects and time sheets by the Cost Rate Rule Update service is blocked by the recalculation of staffing profiles.	<p>The recalculation of projects and time sheets by the Cost Rate Rule Update service is not blocked.</p> <p>The fix of this issue introduces the following two changes:</p> <ul style="list-style-type: none"> <li>• The calculation steps of the Cost Rate Rule Update service is reordered as follows:               <ul style="list-style-type: none"> <li>◦ Recalculate projects: it inserts a row into ITG_PENDING_ROLLUPS to trigger the Cost Rollup service.</li> <li>◦ Recalculate time sheets.</li> <li>◦ Recalculate staffing profiles.</li> </ul> </li> <li>• A new parameter <code>COST_RATE_RULE_UPDATE_SERVICE_COMMIT_BATCH_SIZE</code> is added in the <code>server.conf</code> file. You can use this parameter to specify the batch size of the Cost Rate Rule Update service. By default, the value of this parameter is 20.</li> </ul>
QCCR1L57859	The Cost Rollup service fails with errors.	The Cost Rollup service runs successfully.

## Dashboard

CR	Problem	Solution
QCCR1L54192	When using a validation with a filter in a request type field, the filter works OK. When using the same validation in a Data Source Filter field, the filter returns an error.	The error disappears when using a validation with filter in Data Source Filter Fields.
QCCR1L54830	When you minimize or resize the Logon page, the copyright text position gets changed.	Add the following into PPM guides:  Your screen resolution should be at least 800 x 600 when you use PPM.
QCCR1L56397	An error appears when you open the Analyze Resource Pools portlet or Analyze Assignment Load portlet.	The error does not appear when you open Analyze Resource Pools portlet or Analyze Assignment Load portlet.
QCCR1L57263	An error appears when you use apostrophes somewhere in the comment, as the apostrophes are not taken as text but as special signs.	Apostrophes in comments in Data Source no longer cause SQL errors.
QCCR1L57282	An error appears if the auto-generated alias name exceeds 30 characters.	The error does not occur when the auto-generated alias name exceeds 30 characters.
QCCR1L57313	An error appears if FROM is not followed by space when developing a data source.	The missing space before/after the keyword "FROM" does not cause any errors.
QCCR1L57458	When exporting a portlet that shows colors to Excel, the spreadsheet doesn't export the color codes correctly. It doesn't work if the field exported to Excel has an HTML tag to display color.	To fix this issue, you should add a new column as the image field when defining a data source. The value of the image field should be in the following format:  <pre>&lt;img src="http://&lt;ppm_base_url&gt;/itg/web/knta/drv/images/&lt;color&gt;.gif"/&gt;</pre> The image field will be filled with the color

		specified by the field value in the exported spreadsheet.
QCCR1L55962	For custom list portlet using data source, when the new option "Show Total Number of Records" is checked, the bottom bar of the portlet shows "Showing 1 to 5 of 0" instead of "Showing 1 to 5 of <total_row_number>".	When the new option "Show Total Number of Records" is checked in a customer list portlet, the bottom bar of the portlet shows "Showing 1 to 5 of <total_row_number>".
QCCR1L57673	When non-number fields of a portlet are filled with numbers, the fields display #NUM! when you export the portlet to Excel.	The data in the exported Excel is the same as in the portlet.
QCCR1L57680	Custom list portlets are exported to Excel in incorrect format.	<p>A new option <b>Export to HTML Excel</b> is available in the Edit Preferences page for build list portlet only.</p> <p>If you select this option, list portlets are exported to xlsx files (HTML pages). If you do not select this option, list portlets are exported to xls files (Microsoft Excel files).</p> <p><b>Note:</b> This fix also adds the EXPORT_TO_HTML_EXCEL column in the DSH_PORTLETS table.</p>

## HP Demand Management

CR	Problem	Solution
QCCR1L53412	Errors appear when you try to update existing records in APM.	The existing records in APM can now be updated without the errors.
QCCR1L55923	When you click the end button on Request List portlet to show the last page, the next page is shown instead.	If the <b>Show Total Number of Records</b> checkbox is selected in the portlet preference page, the end button works as expected. If the checkbox is not selected, the end button is disabled.

QCCR1L56717	Trying to open an attachment on a request fails although the request is editable for you.	<p>You are not able to open the attachment of a request if you do one of the following:</p> <ul style="list-style-type: none"> <li>• Change the request header type of the request type, based on which the request is created.</li> <li>• Change the request type of the request on the request details page.</li> <li>• Use the command <code>ksc_copy_request</code>.</li> </ul>
QCCR1L56995	When you sort the portlet by certain columns, it returns an SQL error and the portlet gets stuck with the error until you log out and log in again. This causes the column sorting to be reset to its default.	Sorting portlets by certain columns now works fine.
QCCR1L57221	Requests are opened with GUID errors or cannot be opened at all when the parameter <code>USE_LEGACY_REQUEST</code> is applied to use the old request UI.	You can now open requests without errors when setting the parameter <code>USE_LEGACY_REQUEST</code> to true.
QCCR1L57275	In the Scenario Content list of the Scenario Comparison form, added columns are displayed as blanks.	Added columns are now displayed correctly in the Scenario Content list.
QCCR1L57893	When using Java 8, the printable version of the request page does not behave correctly. All the sections are collapsed, even though they are expanded in the editable version.	The printable version of the request page is displayed correctly when using JDK 8.

## HP Deployment Management

CR	Problem	Solution
QCCR1L56465	When you define the environment, the database checks fail because the <code>isql</code> check fails.	For SQL Server database, PPM Center supports ISQL utility only. Since ISQL utility is not supported in SQL Server 2005 and later versions, PPM Center does not support SQL

		Server 2005 and later.
QCCR1L56736	The content of "where" clause gets truncated when you migrate a data source from one environment to another.	<p>The content of "where" clause is not truncated when you migrate a data source from one environment to another. The length limit of the text entered in the Edit WHERE Clause window in PPM Workbench is removed too. You should clear Java cache to refresh workbench by doing the following:</p> <ol style="list-style-type: none"> <li>1. Open the Java Control Panel.</li> <li>2. Click Settings to open the Temporary Files Settings window.</li> <li>3. Click Delete Files.</li> </ol>

## Documentation

CR	Problem	Solution
QCCR1L56322	The documentation for PPM - UCMDB integration is not clear enough to follow.	<p>Update the <i>HP Solution Integrations Guide</i> for the PPM - UCMDB integration section.</p> <p>For details, see <a href="#">"Unclear instructions about PPM and UCMDB integration"</a> on page 30.</p>
QCCR1L57574	The <i>Deployment Management Extension for SAP Solutions Guide</i> is still available to customers although HP doesn't support SAP extension on PPM 9.30	Remove the guide from the SSO portal.
QCCR1L57668	The <i>Resource Management User Guide</i> includes old screenshot for staffing profile table view.	Update the screenshot in the <i>Resource Management User Guide</i> .
QCCR1L57687	When a resource is assigned to a staffing profile and the project allows only participants to view the project, the user still cannot see the project.	<p>Update the <i>Project Management User's Guide</i> to explain the designed behavior.</p> <p>For details, see <a href="#">"Insufficient information about who can search/view a project"</a> on page 29.</p>
QCCR1L57641	Instructions about switching from	Correct the instructions about switching



	stand-alone to server cluster configuration in the upgrade guide are incorrect.	from stand-alone to server cluster configuration.  For details, see <a href="#">"Incorrect instructions about switching from stand-alone to server cluster configuration"</a> on page 29.
QCCR1L57262	The special command <code>ksc_clear_staffingprofile_forecast_assignment</code> is not included in any guide.	Add the description of the special command in the <i>Commands, Tokens, and Validations Guide and Reference</i> .  For details, see <a href="#">"ksc_clear_staffingprofile_forecast_assignment not documented in the guide"</a> on page 30.
QCCR1L57212	The description about the preview functionality of field layout is not accurate.	Updated the description about the Request Preview window is not accurate in the <i>Demand Management Configuration Guide</i> .  For details, see <a href="#">"Inaccurate description about the Request Preview window"</a> on page 30.

## Integrations

CR	Problem	Solution
QCCR1L55600	An error appears when you retrieve actuals from PPM project using Microsoft Project plug-in in Microsoft Project.	Wait a while and retry to set the work data.
QCCR1L57382	The session timeout property does not work in generic single sign-on implementation.	If you set the parameter <code>ENABLE_GENERIC_SSO_TIMEOUT</code> to <code>true</code> in the Administration Console or <code>server.conf</code> file, the session timeout property works fine in generic SSO implementation. PPM redirectes you to the login page when it times out and forwards you to the Dashboard page after you click Sign-in.  <b>Note:</b> In MLU environment, a window pops up for you to select the session language before you click Sign-in.

		<p>If you set the parameter to <code>false</code>, the session timeout property does not work in generic SSO implementation.</p> <p>By default, the value of the parameter is <code>false</code>.</p>
QCCR1L57363	<p>The "Invalid Username/Password" error appears when trying to log in MSP plug-in under Common Access Card (CAC) and NetScaler deployment environment.</p>	<p>The "Invalid Username/Password" error does not occur if you select the <b>Enable Web Logon</b> checkbox in <b>HP PPM Center &gt; User Preferences</b> in Microsoft Project.</p> <p>For CAC and Netscaler integration, you should select this option to enable the connections between PPM Center and Microsoft Project to go via Web browser.</p>

## Platform

CR	Problem	Solution
QCCR1L56112	<p>You may experience inconsistent results when using smart URLs in notifications.</p>	<p>Clicking smart URLs in notifications now leads to consistent results.</p>
QCCR1L56256	<p>An error appears when running <code>kStatus.sh</code> with RMIS configured.</p>	<p>The error does not appear when running <code>kStatus.sh</code> with RMIS configured.</p>
QCCR1L56648	<p>If you select a security group with a large number of resources as time approvers, it returns <code>StackTraceError</code>.</p>	<p>To fix this issue, a new parameter <code>MAX_RSC_IN_SG_TMAPPROVERS</code> is added in the <code>server.conf</code> file. You can use this parameter to specify the maximum number of resources allowed in a security group that serves as time approvers. This helps improve the performance of background services.</p> <p>If the actual resources number exceeds the limit, the warning message pops up on the Modify Resource page. By default, the value of the parameter is <code>10,000</code>.</p>
QCCR1L56430	<p>The out-of-the-box validation "RSC - Primary Org Units - Enabled" has an invalid SQL statement which ignores</p>	<p>The invalid SQL statement is corrected.</p>

	search parameters	
QCCR1L56468	When a node joins in the cluster, the information of its joining is not logged.	The information of a node's joining is improved in the cluster monitor. You are now able to distinguish the nodes information.
QCCR1L56586	After you upgrade PPM to 9.22, PPM runs slowly on IE 10.	The performance issue is improved on IE10.
QCCR1L56894	PPM connection pool does not release NDC reference, which results in Out of Memory Errors.	Memory leak is solved. The Out of Memory Errors caused by NDC reference do not occur.
QCCR1L56954	The response time for opening approval details of a time sheet is 25-30 seconds. The response time should be shortened.	The time it takes to open approval details of a time sheet is shortened.
QCCR1L57025	Double headers are displayed on screen for no reasons.	Only a single header is displayed on screen.
QCCR1L57201	Importing translations by bundles from another PPM instance fails, because the UUIDs of some entities are not the same between different PPM instances.	HP suggests that you export and import translations of entities attributes within one PPM instance.
QCCR1L57508	Some indexes on foreign key constraints are missing.	The missing indexes are added.
QCCR1L57545	When users search reports by the filter "Previous reports: Run within the last days", PPM checks the submission/creation date instead of the RUN date.	PPM now returns correct search results when users search reports by the filter "Previous reports - Run within the last days".

## HP Portfolio Management

CR	Problem	Solution
QCCR1L56897	Role availability information becomes incorrect when you change the start date of an item in the scenario comparison.	Role availability information is correct after you change the start date of an item in the scenario comparison.

QCCR1L57867	Every time a scenario comparison is displayed, "DB connections in use" increases until it reaches the maximum pool size. Once it reaches the maximum pool size, no operation in PPM is possible, which results in DB connection errors: "The database could not be reached. (KNTA-10224)".	All the database connections used by the scenario comparison functionality are closed correctly now.
-------------	--	--

## HP Project Management

CR	Problem	Solution
QCCR1L54394	If you set a large number of resources as the summary task owners, the length of RESOURCE_FULL_NAME_LIST_HOVER will exceed the limit of 4,000. This causes the Summary Task List portlet to throw errors.	You should decrease the number of summary task owners.
QCCR1L57057	Stakeholders who have only the view access grant of work plan can delete tasks on task detail page.	Stakeholders with only the view access grant can not delete tasks on task detail page.
QCCR1L57180	Customers randomly get incorrect values of Estimated Remaining Effort (ERE) and % Complete.	The values of Estimated Remaining Effort (ERE) and % Complete are correct.
QCCR1L57253	The position of the action tool bar is not always correct in the project details page.	The action tool bar is now always floated on top of the project details page.
QCCR1L57537	Poor performance in scheduling a work plan with a large number of tasks.	The performance is improved so that you do not need to wait for long after scheduling a work plan.
QCCR1L57724	The Cost Category field in staffing profile is not shown in Japanese when the session language is set to Japanese.	The Cost Category field is displayed in the correct language.
QCCR1L57725	Most of data input error message get garbled in the dialogue when you log in PPM in Japanese.	The error messages are displayed correctly when you log in PPM in Japanese.

QCCR1L57726	When using JDK 8.0, java.util.ConcurrentModificationException occurs while exporting the Project Overview page to PDF.	In JDK 8.0 environment, the exception does not occur when exporting the Project Overview page to PDF.
-------------	--	---

## HP Resource Management

CR	Problem	Solution
QCCR1L57506	The staffing profile shows incorrect data of positions in the exported .pdf file.	The exported .pdf file now displays correct staffing profile position data.

## HP Time Management

CR	Problem	Solution
QCCR1L47259	The "Open list of errors in new window" link on Non-Compliance pop-up window is broken.	The "Open list of errors in new window" link on Non-Compliance pop-up window now works.
QCCR1L56933	The TM-PM sync does not run correctly.	The TM-PM sync runs without errors because the prevalidation check ignores the work unit with zero actual effort by unassigned resource.
QCCR1L57288	Cost is not rolled up to financial summary for request work items when a new time sheet is saved.	Upon saving a time sheet, PPM now creates pending cost roll up records for request work items.
QCCR1L57717	Users experience a severely degraded performance of PPM, especially with time management module.	The performance issue with the Time Management module is solved.

## Fixes in Version 9.31.0002

The following items are fixed in PPM Center version 9.31.0002. The CR column lists the parent CR numbers of the defects categorized by modules. If a defect has a child CR, the child CR number is listed in parenthesis at the end of the problem description.

### Costing

CR	Problem	Solution
QCCR1L58058	Forecast costs are not synchronized to financial summary if you use the Gantt view of a staffing profile. (QCCR1L58164)	Forecast costs can now be synchronized to financial summary when you use the Gantt view of a staffing profile.

### Dashboard

CR	Problem	Solution
QCCR1L57048	When you sort custom portlets by columns containing duplicated values, the results are unpredictable.	<p>This issue is caused by a known limitation of Oracle row_number() function.</p> <p>If the data source SQL is in the format: <code>select A, B from table a where 1=1 order by C</code>, in which C is nullable or has non-unique values, custom portlets return unpredictable results when sorted by columns containing duplicated values.</p> <p>To work around this issue, you should add additional columns with unique values or rowid of the tables in the "from" clause to the "order by" clause. For example, <code>select A, B from table a where 1=1 order by C, D</code>, in which D could be a column with unique value or rowid.</p> <p>Note: You can add more than one columns to the "order by" clause when no column with unique value or rowid is applicable. For performance sake, it is recommended that you add columns with index.</p>

QCCR1L57683	In some portlets, the numbers are rounded off to 2 decimals and are displayed as expected. However, when the same data is exported to Excel, the Excel data doesn't have rounded-off values, instead it has many decimals.	The data in Excel is exactly the same as in the dashboard page.
QCCR1L58059	When you export the Request List portlet to Excel, the empty date field is displayed as #NUM! in Excel file. (QCCR1L58064)	If the date field is empty in the portlet, it is displayed as empty in the exported Excel file.
QCCR1L58178	Custom portlets throw StackOverflowError after you install PPM 9.31.0001.	Custom portlets do not throw StackOverflowError.
QCCR1L58225	Exporting a dashboard page to Excel takes longer after you upgrade PPM to 9.22. (QCCR1L58250)	The performance issue with exporting a dashboard page to Excel is improved in PPM instances with only one language installed. In MLU environment, the performance issue still exists.
QCCR1L57128	Some sensitive information leaks if you visit PPM Dashboard via wrong URL. (QCCR1L58291)	The sensitive information is hidden.

## HP Demand Management

CR	Problem	Solution
QCCR1L57983	When you download an attachment in IE 11(native mode), the file name comes as a garbage value with no extension name. (QCCR1L58054)	Attachments are downloaded with correct file names and extension names.
QCCR1L58185	Notifications are split for custom request types. (QCCR1L58188)	If you do not want the notifications to split, you should set the parameter <code>USE_SERVER_LOCALE_FOR_NOTIFICATIONS</code> to true, and make sure the parameters <code>SERVER_LOCALE_COUNTRY_CODE</code> and <code>SERVER_LOCALE_LANGUAGE_CODE</code> are not null.

		For more information, see Appendix C section of the <i>HP Demand Management Configuration Guide</i> .
QCCR1L58309	When PPM is installed on a Linux server and when you export the Request List portlet to Excel, the dates in the Excel file are one day earlier than the dates in the portlet. (QCCR1L58310)	The dates in the Request List portlet and the exported Excel file are the same.

## Integrations

CR	Problem	Solution
QCCR1L57764	When you upload documents to PPM, the documents are appended with "null". (QCCR1L58322)	The "null" string is not displayed in the document name column.

## Platform

CR	Problem	Solution
QCCR1L57377	When the sign-in language and the browser locale are not the same, work plan Quick view is displayed with mixed languages. (QCCR1L57635)	Work plan Quick view is displayed in the sign-in language regardless of the browser locale.
QCCR1L57924	Hyperlinks on the Project Details page do not work after PPM is upgraded to 9.31. (QCCR1L58031)	Hyperlinks work fine in the Project Details page.
QCCR1L58385	In the View Portfolio Hierarchy page and the Program Overview page, scroll bars are not working when you open PPM 9.31.0001 with Internet Explorer 11. (QCCR1L58387)	The scroll bars in the two pages work fine now in Internet Explorer 11.
QCCR1L58437	Heap dump happens on the server. (QCCR1L58595)	MAX_RESULT_OF_AUDIT_EVENT_QUERY is introduced for you to limit the max number of audit event query result. By default it is



		set to 1000.
QCCR1L58596	Running PPM 9.31.0001 in IE is slow. (QCCR1L58598)	The performance issue with PPM 9.31.0001 running in IE is improved.

## HP Portfolio Management

CR	Problem	Solution
QCCR1L57923	Total FTE values taken from the Resource Details by Period page and the Role Availability page are different. (QCCR1L58166)	The total FTE values in the two pages are now the same.
QCCR1L58107	If you do not have the Edit Scenario Comparison access grant, nothing happens in scenario comparison when you change the value of Graph Period Interval, and then click <b>Change</b> . (QCCR1L58433)	The Graph Period Interval can be changed regardless of whether you have the Edit Scenario Comparison access grant.

## HP Project Management

CR	Problem	Solution
QCCR1L57822	A prompt pops up in Project Details tab when you switch to another tab with some fields updated without saving. This is unnecessary if the fields update is triggered by SQL rule. (QCCR1L57855)	<p>To fix this issue, the <code>ENABLE_PROJECT_DETAIL_VALIDATE</code> parameter is added in the <code>server.conf</code> file.</p> <p>When you set it to <code>true</code>, the system will check the fields on Project Details tab before you switch to another tab. If the fields are updated without saving, the prompt will pop up.</p> <p>When you set it to <code>false</code>, the system will not do the check, and the prompt will not appear.</p> <p>By default, the value of the parameter is <code>true</code>.</p>

QCCR1L57318	If HTTP port of PPM server is 80, work plan Quick view never loads when you click <b>Edit workplan</b> .	Work plan Quick view can be opened when HTTP port of PPM server is 80.
QCCR1L57891	Financial Summary Edit Cost page is not displayed correctly in IE 11 unless Compatibility View is enabled. (QCCR1L58048)	Financial Summary Edit Cost page is displayed correctly in IE 11.
QCCR1L57731	In the <b>Cost</b> tab of the Project Overview page, Projected Cost shows a downward sloping line. It should be displayed as accumulated cost, so the line should be displayed as an ever-increasing one. (QCCR1L58136)	Projected Cost is now displayed as an upward sloping line.
QCCR1L58180	System hangs when you try to create a work plan from template.	No performance issues or "Out of Memory" errors occur when you create a work plan from template.
QCCR1L58078	In work plan Quick view, if you edit the task start date and save it, the start date is changed back to the current date. (QCCR1L58184)	You can change task start date to the date you select in work plan Quick view.
QCCR1L58231	The bar chart of staffing profile baseline is not displayed in the Resource Forecast Cost section of the Cost tab of the project.	The bar chart of staffing profile baseline is now displayed.
QCCR1L58289	Errors appear randomly when you indent or outdent tasks.	There are no errors when you indent or outdent tasks.
QCCR1L58377	When you create a staffing profile baseline through PPM workflow, the bar chart of the baseline is not displayed in the Resource Forecast Cost page.	The bar chart of staffing profile baseline is displayed in the Resource Forecast Cost page when the baseline is created through PPM workflow.

## HP Resource Management

CR	Problem	Solution
QCCR1L57977	Resources are displayed in the ascending sequence of Suitability Score in the Select a Resource to	Resources are displayed in the descending sequence of Suitability Score in the Select a Resource to Assign page.

	Assign page. However, they should be displayed in the descending sequence of Suitability Score, because resource pool managers usually look for a resource who is more suitable to a resource request.	
QCCR1L58020	Users in different time zones see different start/end dates in the same staffing profile.	The same dates are displayed for users using different time zones.
QCCR1L58129	Shifting project start date causes the forecast bar and the assignment bar in the staffing profile to break into several parts.	When shifting project schedule, the forecast data will be re-calculated. Due to different numbers of working day, the efforts for each day in different months may be different. Now PPM checks the accuracy, if the value deviation between months is very minor, the different values are considered the same.
QCCR1L58130	When you click the <b>Confirm</b> button without any changes on the forecast bar in staffing profile, the position status becomes "Partially assigned" instead of "Fulfilled" for the fulfilled efforts, and additional resources need to be assigned to fill the gap. (QCCR1L58183)	The position status is now displayed correctly.
QCCR1L58288	In staffing profile Gantt view, resource types of staffing profile positions are not sorted.	Resource types of staffing profile positions are sorted in staffing profile Gantt view.
QCCR1L58371	When you change the end date of a staffing profile from the Statistics section of a staffing profile, the forecasts of some positions disappear and the allocation of some resources might disappear too. (QCCR1L58576)	Forecast and allocation data retain when you change the end date of a staffing profile.

## Chapter 5: Known Problems and Limitations

The following problems and limitations are known to exist in PPM Center version 9.31.0001 or later. The problems are categorized by the affected product area. If a problem has an assigned internal tracking number, that tracking number is provided (in parentheses) at the end of the problem description.

### Known Problems and Limitations in 9.31.0001

#### Platform

---

**Problem:** If Japanese is the default language of Java Virtual Machine, the email notification is displayed in Japanese even though the log-in language is English. (QCCR1L57791)

**Workaround:** If the PPM instance is on a platform whose operating system language is Japanese, you must explicitly specify English as the default language of Java Virtual Machine.

To do so, change `<PPM_HOME>/bin/kStart.sh` by adding the line: `SERVER_OPTION="$SERVER_OPTION -Duser.language=en -Duser.country=US"` after the following:

```
if [ "$OS_NAME" = "AIX" ]; then
    SERVER_OPTION=""
else
    SERVER_OPTION="-server"
fi
```

---

**Problem:** PPM server crashes due to a JVM bug. (QCCR1L57796)

**Workaround:** None.

This is a known issue related to GZIP compression in Oracle Java Virtual Machine (for details, see [http://bugs.java.com/bugdatabase/view\\_bug.do?bug\\_id=8028216](http://bugs.java.com/bugdatabase/view_bug.do?bug_id=8028216)). If you see GZIP exceptions in the server log, you should set the parameter `GZIP_ENCODING_ENABLED` to `false` until Oracle fixes the issue.

---

## Chapter 6: Documentation Errata

The following documentation items are incorrect:

### *HP Project Management User's Guide*

---

#### **Insufficient information about who can search/view a project**

**Location:** *HP Project Management User's Guide*, version 9.30

**Error:** The guide needs more information to explain who can search or view a project to clear confusion. (QCCR1L57687)

**Correction:** Add a note as follows in the section "Project Security":

**Note:** Not all resources allocated to staffing profile can view the project. Only the resources who log time against project tasks can view the project.

---

### *Upgrade Guide*

---

#### **Incorrect instructions about switching from stand-alone to server cluster configuration**

**Location:** *Upgrade Guide*, version 9.20 and 9.30

**Error:** The instructions about switching from stand-alone to server cluster configuration are incorrect in the guide. (QCCR1L57641)

**Correction:** Updated the "Switching from Stand-Alone to Server Cluster Configuration" section of the guide.

For the updated guide, see <http://softwaresupport.hp.com/group/softwaresupport/search-result/-/facetsearch/document/KM01161945>.

---

## *HP Solution Integrations Guide*

---

### **Unclear instructions about PPM and UCMDB integration**

**Location:** *HP Solution Integrations Guide*, version 9.30

**Error:** The instructions about how to implement PPM and UCMDB integration are not clear. (QCCR1L56322)

**Correction:** Updated chapter 12 of the guide to make it easier for understanding.

For the updated guide, see <http://softwaresupport.hp.com/group/softwaresupport/search-result/-/facetsearch/document/KM01161759>.

---

## *Commands, Tokens, and Validations Guide and Reference*

---

### **ksc\_clear\_staffingprofile\_forecast\_assignment not documented in the guide**

**Location:** *Commands, Tokens, and Validations Guide and Reference*, version 9.30

**Error:** The special command `ksc_clear_staffingprofile_forecast_assignment` is not documented in the guide. (QCCR1L57262)

**Correction:** Added the description of the special command.

For the up guide, see <http://softwaresupport.hp.com/group/softwaresupport/search-result/-/facetsearch/document/KM01161861>.

---

## *HP Demand Management Configuration Guide*

---

### **Inaccurate description about the Request Preview window**

**Location:** *HP Demand Management Configuration Guide*, version 9.30

**Error:** The description about the Request Preview window is not accurate in the guide. (QCCR1L57212)

**Correction:** Replace the note for the description about the Request Preview window with the following:

**Note:** Hidden fields are displayed as blanks in the preview window, however, they are removed on the request detail page, and will be replaced by fields located to the right side of the hidden fields on the same row.

Cells with no fields are treated the same as hidden fields.

---

## Send Documentation Feedback

If you have comments about this document, you can [contact the documentation team](#) by email. If an email client is configured on this system, click the link above and an email window opens with the following information in the subject line:

**Feedback on Release Notes (Project and Portfolio Management Center 9.31.0002)**

Just add your feedback to the email and click send.

If no email client is available, copy the information above to a new message in a web mail client, and send your feedback to [HPSW-BTO-PPM-SHIE@hp.com](mailto:HPSW-BTO-PPM-SHIE@hp.com).

We appreciate your feedback!