

HP Cloud Service Automation

Software Version: 4.50
Windows® operating system

Configuring an HP CSA Cluster for High Availability Using a Load Balancer

Document Release Date: February 2016
Software Release Date: June 2015



Legal Notices

Warranty

The only warranties for HP products and services are set forth in the express warranty statements accompanying such products and services. Nothing herein should be construed as constituting an additional warranty. HP shall not be liable for technical or editorial errors or omissions contained herein.

The information contained herein is subject to change without notice.

Restricted Rights Legend

Confidential computer software. Valid license from HP required for possession, use or copying. Consistent with FAR 12.211 and 12.212, Commercial Computer Software, Computer Software Documentation, and Technical Data for Commercial Items are licensed to the U.S. Government under vendor's standard commercial license.

Copyright Notice

© Copyright 2010-2016 Hewlett-Packard Development Company, L.P.

Trademark Notices

Adobe™ is a trademark of Adobe Systems Incorporated.

Microsoft® and Windows® are U.S. registered trademarks of Microsoft Corporation.

The OpenStack® Word Mark and the Square O Design, together or apart, are trademarks or registered trademarks marks of OpenStack Foundation, in the United States and other countries and are used with the OpenStack Foundation's permission.

Oracle and Java are registered trademarks of Oracle and/or its affiliates.

RED HAT READY™ Logo and RED HAT CERTIFIED PARTNER™ Logo are trademarks of Red Hat, Inc.

This product includes an interface of the 'zlib' general purpose compression library, which is Copyright © 1995-2002 Jean-loup Gailly and Mark Adler.

Documentation Updates

The title page of this document contains the following identifying information:

- Software Version number, which indicates the software version.
- Document Release Date, which changes each time the document is updated.
- Software Release Date, which indicates the release date of this version of the software.

To check for recent updates or to verify that you are using the most recent edition of a document, go to: <http://h20230.www2.hp.com/selfsolve/manuals>

This site requires that you register for an HP Passport and sign in. To register for an HP Passport ID, go to: <http://h20229.www2.hp.com/passport-registration.html>

Or click the **New users - please register** link on the HP Passport login page.

You will also receive updated or new editions if you subscribe to the appropriate product support service. Contact your HP sales representative for details.

Support

Visit the HP Software Support Online web site at: <http://www.hp.com/go/hpsupport>

This web site provides contact information and details about the products, services, and support that HP Software offers.

HP Software online support provides customer self-solve capabilities. It provides a fast and efficient way to access interactive technical support tools needed to manage your business. As a valued support customer, you can benefit by using the support web site to:

- Search for knowledge documents of interest
- Submit and track support cases and enhancement requests
- Download software patches
- Manage support contracts
- Look up HP support contacts
- Review information about available services
- Enter into discussions with other software customers
- Research and register for software training

Most of the support areas require that you register as an HP Passport user and sign in. Many also require a support contract. To register for an HP Passport ID, go to:

<http://h20229.www2.hp.com/passport-registration.html>

To find more information about access levels, go to:

http://h20230.www2.hp.com/new_access_levels.jsp

HP Software Solutions Now accesses the HPSW Solution and Integration Portal Web site. This site enables you to explore HP Product Solutions to meet your business needs, includes a full list of Integrations between HP Products, as well as a listing of ITIL Processes. The URL for this Web site is <http://h20230.www2.hp.com/sc/solutions/index.jsp>

Contents

Document Change Notes	7
Chapter 1: Overview	8
Request Flow	10
About the Examples	11
General Notes about Configuring a Clustered Environment	13
Chapter 2: Configure the Load Balancer Node	14
Install the Load Balancer	14
Configure the Load Balancer	14
Generate the Certificate	14
Start the Load Balancer	15
Chapter 3: Configure the HP CSA Node	16
Install HP CSA	16
Upgrade HP CSA	17
Configure HP CSA	20
Edit Properties	20
Enable JNDI	21
Request a Software License	21
Configure Marketplace Portal Redirection	22
Configure JBoss	22
Configure a Secure Connection	25
Configure the Identity Management Component	26
Reconfigure the HP CSA Service	27
Configure Global Search	28
Configure the TCP Communication Channel on JGroups	32
Configure HP Single Sign-On	34
Share Filesystem Resources	35
Chapter 4: Configure the Marketplace Portal Node	37
Install the Remote Marketplace Portal Instance	37
Upgrade the Remote Marketplace Portal Instance	37

Configure the Remote Marketplace Portal Instance	38
Chapter 5: Common Tasks	40
Start HP CSA	40
Stop HP CSA	40
Start the Marketplace Portal	41
Stop the Marketplace Portal	41
Launch the Cloud Service Management Console	41
Launch the Marketplace Portal	41
Chapter 6: Troubleshoot the HP CSA Clustered Environment	43
Send Documentation Feedback	44

Document Change Notes

Description	Date
Initial release of this document with CSA 4.5 MR	June 2015
In " Configure JBoss " on page 22, changed the public interface code in step 8: from: <inet-address value="111.222.333.444"/> to: <inet-address value="\$jboss.bind.address:<CSA_Node_ip_Address>"/>	February 2016
Added back the " Configure the TCP Communication Channel on JGroups " on page 32 section that had been in the CSA 4.2 guide.	February 2016
In the " Configure the TCP Communication Channel on JGroups " on page 32 section, added the changed step 8 in " Configure JBoss " on page 22, to be the new step 4.	February 2016

Chapter 1: Overview

HP Cloud Service Automation (HP CSA) uses JBoss clustering technology to enable you to configure an active/active (high-availability) cluster. Clustering enables you to run HP CSA on several parallel servers called *nodes*. Cluster configuration improves performance on systems that handle high transaction volumes or large numbers of concurrent users. In addition to handling higher user loads and providing greater scalability, the cluster configuration supports server failover features.

Web requests to the HP CSA Controller or Marketplace Portal are load balanced among the nodes in the cluster. Increasing the number of nodes in the cluster will improve web request transaction throughput. Increasing the number of nodes in the cluster will also improve the response time by HP CSA fulfillment services to a high volume of concurrent deployment requests.

Because clustering distributes the workload across different nodes, if any node fails, HP CSA remains accessible through other nodes in the cluster. You can continue to improve HP CSA throughput by simply adding nodes to the cluster. If a node shuts down, activities such as email notifications that are scheduled to run on that node are automatically transferred to another available node. This server failover feature helps ensure that HP CSA remains operational.

Unsaved changes on a node that shuts down are lost and are not transferred to an available node. Users who log on to HP CSA after a node shuts down see only changes that were saved on that node.

In the following diagram, the example cluster configuration consists of seven different physical (or virtual) hosts: one host is running a load balancer that proxies web requests into the HP CSA/JBoss cluster or Node.js cluster (for the Marketplace Portal), three hosts are running HP CSA in standalone mode, and three hosts are running the Marketplace Portal.

Note: Content on how to use a database cluster or Oracle RAC is beyond the scope of this document.

However, configuring HP CSA to use a Microsoft SQL Server cluster is no different from configuring HP CSA to use a standalone Microsoft SQL Server. Install and configure the Microsoft SQL Server cluster according to the manufacturer's documentation and follow the instructions to install HP CSA using a Microsoft SQL Server in the *HP Cloud Service Automation Installation Guide*.

For information about configuring HP CSA with Oracle RAC, refer to the *Configuring HP CSA to Work with Oracle RAC* whitepaper.

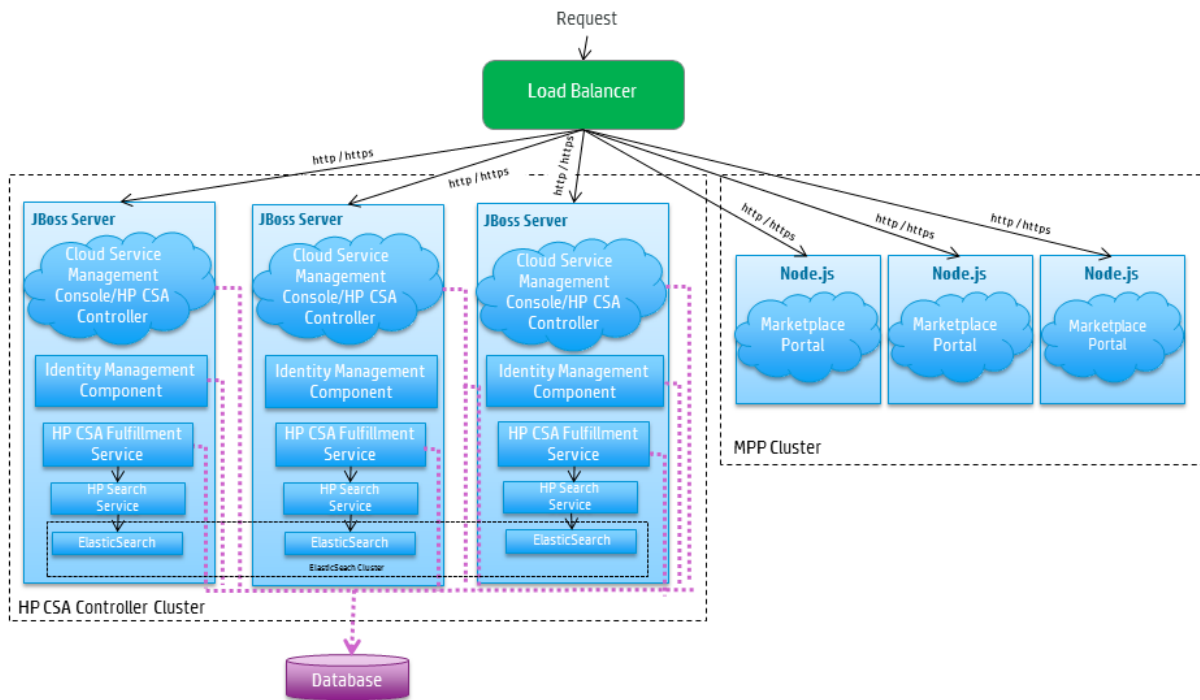


Figure 1-1. Example Cluster Configuration

The cluster uses a load balancer to distribute requests among any number of nodes. The load balancer (internal or external) listens for HTTP/S requests from standard interface clients and forwards them to one of the nodes. These nodes are transparent to users and users access only the URL to the load balancer.

Request Flow

The following diagrams show how a request (distributed from the load balancer) is processed in the clustered environment for the Cloud Service Management Console and Marketplace Portal.

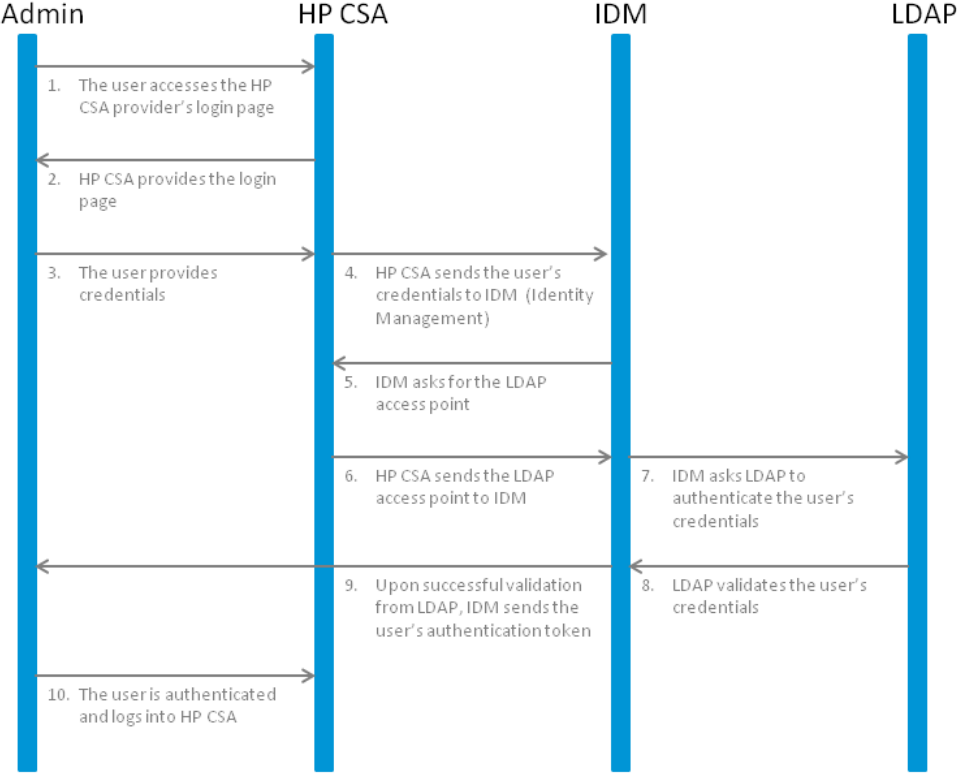


Figure 1-2. Cloud Service Management Console Request Flow

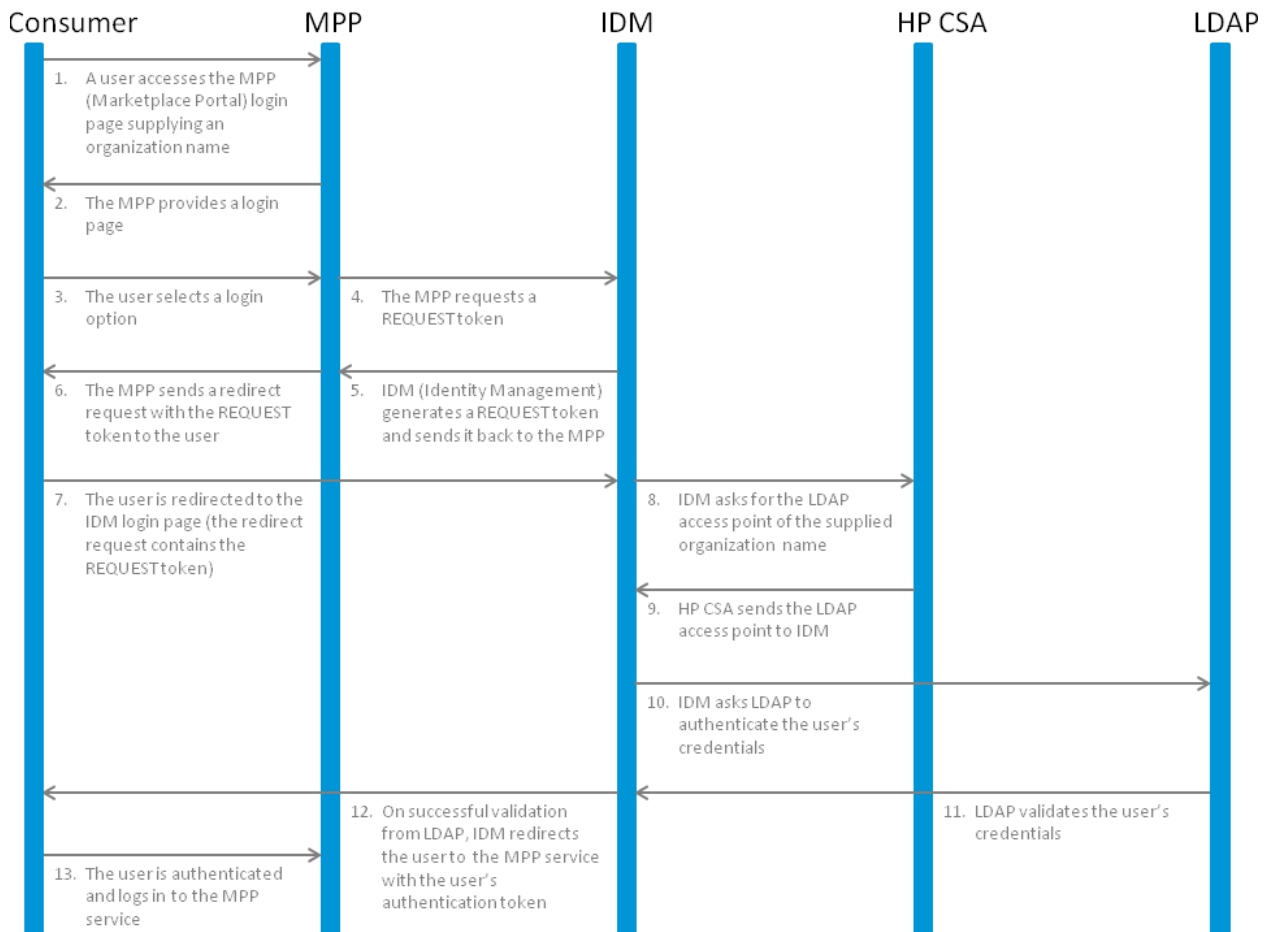


Figure 1-3. Marketplace Portal Request Flow

About the Examples

In this document, the following names are used to identify the hosts or nodes in the clustered environment:

- **Load_Balancer node:** the load balancer that distributes requests among the nodes in the clustered environment
- **CSA_Node nodes:** hosts HP CSA
- **MPP_Node nodes:** hosts the Marketplace Portal

In this document, an item denoted in square brackets is a placeholder for the actual value that has been configured (for example, the hostname of the "CSA_Node1" node is denoted as [CSA_NODE1_HOSTNAME]).

In the following diagram, items in parentheses are default or example values used in this document (for example, the default port used by the Cloud Service Management Console is 8444).

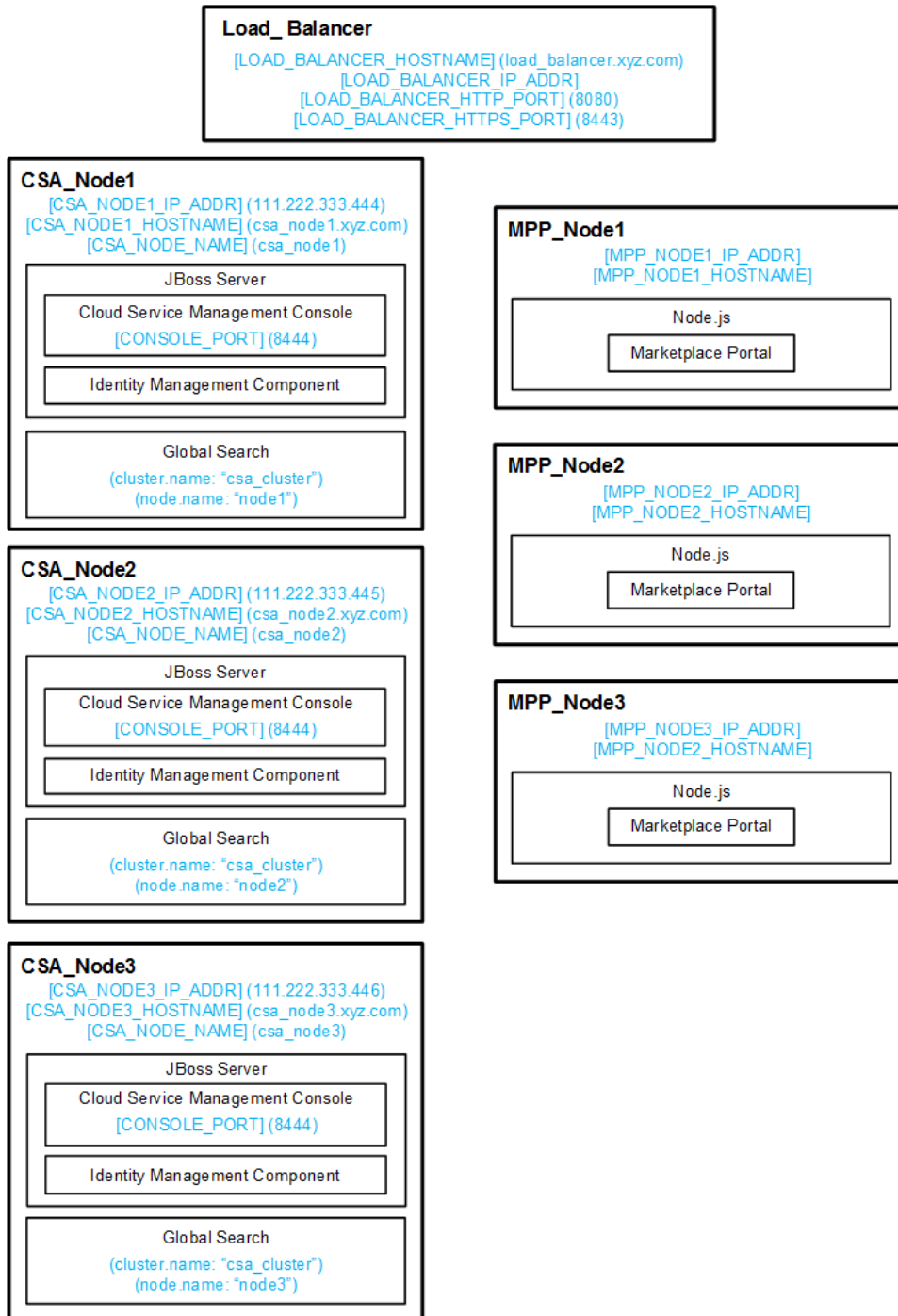


Figure 1-4. Example Values for Example Cluster Configuration

The user who sets up the nodes should have knowledge of or work with someone who has knowledge of HP CSA, HP Operations Orchestration, load balancers, JBoss, and resource providers that will be integrated with HP CSA.

General Notes about Configuring a Clustered Environment

The following information should be considered when configuring a clustered environment:

- It is recommended that you install and configure the nodes in the order presented in this guide. There are some tasks that are dependent on this order (such as generating certificates and importing them).

Install and configure the load balancer node first. Follow the manufacturer's recommendations to install and configure the load balancer.

- The system time among all nodes in the cluster must be synchronized. If the time is not synchronized, users may experience problems such as not being able to log in to the Marketplace Portal.
- HP CSA must be installed in the same directory on all nodes. Some file locations are hardcoded in configuration files and, if these file locations do not match among nodes, HP CSA fails to start.

Chapter 2: Configure the Load Balancer Node

Install and configure the load balancer on the load balancer node before setting up the HP CSA cluster configured for high availability.

Install the Load Balancer

Install the load balancer following the manufacturer's recommendations. Refer to the manufacturer's documentation for more information.

Configure the Load Balancer

The load balancer should be configured to balance the workload among the nodes in the HP CSA/JBoss cluster and the nodes in the Marketplace Portal/Node.js cluster.

Configure the load balancer following the manufacturer's recommendations (refer to the manufacturer's documentation for more information) with the following exceptions:

- When configuring the load balancer for the Marketplace Portal/Node.js cluster, configure sticky sessions. Sticky sessions are required for session persistence between the load balancer and the Marketplace Portal in a clustered environment.
- HP CSA only supports secure connections over TLSv1. The load balancer should be configured for this connection protocol.

Generate the Certificate

If you will be configuring a secure connection (using a protocol such as TLS) to communicate from the load balancer to the HP CSA and Marketplace Portal nodes, you will need to generate the load balancer's certificate (in this document, it will be referred to as `load_balancer.crt`). Copy this certificate to the `%CSA_HOME%\jboss-as\standalone\configuration` directory on the HP CSA nodes and to the `%CSA_HOME%\portal\conf\` directory on the Marketplace Portal nodes.

Note: When configuring HP CSA, if you intend to refer to the load balancer system by its IP address rather than its fully-qualified domain name, you must generate the certificate with the Subject Alt Name attribute set to the IP address of the load balancer system.

Start the Load Balancer

You can start the load balancer now (following the manufacturer's recommendations) or after configuring the HP CSA cluster.

Chapter 3: Configure the HP CSA Node

This chapter describes how to install, upgrade, and configure an HP CSA node (for example, `csa_node1`, `csa_node2`, or `csa_node3`) in an HP CSA cluster configured for high availability.

The CSA node consists of:

- HP CSA
- Global search
- Identity Management component

To configure the CSA node, do the following:

- Install or upgrade the HP CSA node
- Configure HP CSA

Install HP CSA

Install HP CSA on each CSA node as described in the *HP Cloud Service Automation Installation Guide* with the following exceptions:

- You must install the same version of HP CSA on each node (including the Marketplace Portal nodes).
- Install HP CSA in the same location in which you installed or will be installing HP CSA on all CSA nodes.
- Install HP CSA database components and create the database schema for one and only one of the CSA nodes. HP recommends that you create the schema when you install HP CSA on the first CSA node. Then, you do not need to create the schema when you install HP CSA on the other nodes.

Note: All CSA nodes must connect to the same database schema. However, you only need to create the database schema once.

- You can only use the installer to install sample content on the node on which database components have been installed and the database schema has been created. On the other nodes in the cluster, use the HP Cloud Content Capsule Installer to install the sample content after the database schema has been created. Refer to the *[[[Undefined variable CSAVariables.mnICSLContentInstaller]]]* for more information.

- Use an external (existing) instance of HP Operations Orchestration.

Note: You cannot configure HP CSA in a clustered environment using the embedded HP Operations Orchestration instance.

Note: HP recommends that you install HP Operations Orchestration in its own cluster configured for high availability. Refer to the HP Operations Orchestration documentation for more information.

- You must configure a secure protocol connection (such as TLS) between HP Operations Orchestration and all CSA nodes.
- If you are configuring HP Operations Orchestration for sequential designs, set the **Property Value** of the **CSA_REST_URI** System Property to
`https://[LOAD_BALANCER_HOSTNAME]:[LOAD_BALANCER_CSA_HTTPS_PORT]/csa/rest.`

For example:

`https://load_balancer.xyz.com:8443/csa/rest`

- Do NOT start the Marketplace Portal service on the CSA nodes. The Marketplace Portal should be installed as a remote instance on a Marketplace Portal node in its own clustered environment. See "[Configure the Marketplace Portal Node](#)" on page 37 for more information.

The *HP Cloud Service Automation Installation Guide* can be downloaded from the HP Software Support Web site at <http://h20230.www2.hp.com/selfsolve/manuals/> (this site requires that you register with HP Passport).

Upgrade HP CSA

To upgrade HP CSA, on each CSA node, do the following:

1. If you are using the JRE that is installed with HP CSA (OpenJRE), back up the truststore (`<csa_jre>\lib\security\cacerts`) and/or the load balancer certificate outside of `%CSA_HOME%`. Because the JRE will be upgraded, the truststore is also upgraded. Any certificates you manually imported into the truststore will be lost unless you back up the truststore or the certificates. Do not re-use the truststore from the old version of the JRE (in case it contains public Certificate Authority certificates that are no longer trusted). Instead, you must export any root and/or self-signed certificates from the old truststore (certificates that you had manually imported into the old truststore) and import them into the new JRE truststore after running the upgrade installer.
2. Upgrade HP CSA as described in the *HP Cloud Service Automation Upgrade Guide* with the following exceptions:

- Before running the upgrade installer, if you are upgrading from HP CSA version 4.10, any customizations you made to the `%CSA_HOME%\jboss-as-7.1.1.Final\bin\domain.conf.bat` file must be made to the `%CSA_HOME%\jboss-as-7.1.1.Final\bin\standalone.conf.bat` file. The upgrade installer uses the `standalone.conf.bat` file, not the `domain.conf.bat` file.

For example, if you updated the path to the JRE in the `domain.conf.bat` file, make the same changes in the `standalone.conf.bat` file before running the upgrade installer. The upgrade installer will use the JRE defined in the `standalone.conf.bat` file.

- When running the upgrade installer, install HP CSA database components and upgrade the database schema on one and only one of the CSA nodes. HP recommends that you upgrade the schema on the first CSA node that you upgrade. Then, you do not need to install HP CSA database components and upgrade the database schema when you upgrade HP CSA on the other CSA nodes.

Note: All CSA nodes must connect to the same database schema. However, you only need to install HP CSA database components and upgrade the database schema once.

- When running the upgrade installer, you must continue to use an external (existing) instance of HP Operations Orchestration. You cannot install or upgrade to use an embedded HP Operations Orchestration instance.
- When running the upgrade installer, you cannot install the additional sample content. You can deploy the content after the upgrade has completed. Refer to the `[[[Undefined variable CSAVariables.mnlCSLContentInstaller]]]` for information on how to manually deploy this content.
- After running the upgrade installer, any references to the `%CSA_HOME%\jboss-as\standalone\configuration\standalone.xml` file in the *HP Cloud Service Automation Upgrade Guide* should be applied to the `%CSA_HOME%\jboss-as\standalone\configuration\standalone-full-ha.xml` file instead.

For example, in HP CSA version 4.20, if you customized the host or ports in the `standalone-full-ha.xml` file, when you follow the instructions in the *Recustomize Host and Ports* section of the *HP Cloud Service Automation Upgrade Guide*, instead of updating the `standalone.xml` file, you should update the `standalone-full-ha.xml` file. If you do not remember the customizations you made to the file, refer to the backed up copy, `%CSA_HOME%_CSA_4_50_0_installation\Backup\standalone\configuration\standalone-full-ha.xml`.

In HP CSA version 4.10, if you customized the host or ports in the `domain.xml` file, when you follow the instructions in the *Recustomize Host and Ports* section of the *HP Cloud Service Automation Upgrade Guide*, instead of updating the `standalone.xml` file, you should update the `standalone-full-ha.xml` file. If you do not remember the customizations you made to the file, refer to the backed up copy, `%CSA_HOME%_CSA_4_50_0_installation\Backup\domain\configuration\domain.xml`.

- After upgrade to HP CSA 4.50, if **Enable HP SSO** is selected during upgrade, and if the `initString` value in the `%CSA_HOME%\jboss-as-7.1.1.Final\standalone\deployments\csa.war\WEB-INF\hpssoConfiguration.xml` (HP CSA 4.10) or `%CSA_HOME%\jboss-as\standalone\deployments\csa.war\WEB-INF\hpssoConfiguration.xml` (HP CSA 4.2x) file is detected to be the default value created during a previous installation of HP CSA, the `initString` value is regenerated as a security measure.

If the external HP Operations Orchestration had not already been configured for HP SSO, the upgrade process will attempt to update the external HP Operations Orchestration's HP SSO configuration with the new `initString` value generated during installation.

Any other products that you had configured for HP SSO with HP CSA will need to be updated to share a common `initString` with HP CSA. After upgrade to HP CSA 4.50, you should review and update, as needed, the HP SSO configuration in HP Operations Orchestration and other integrated products. For more information on configuring HP SSO between HP CSA and other products, refer to the *HP Cloud Service Automation Configuration Guide*.

The *HP Cloud Service Automation Upgrade Guide* and *HP Cloud Service Automation Configuration Guide* can be downloaded from the HP Software Support Web site at <http://h20230.www2.hp.com/selfsolve/manuals/> (this site requires that you register with HP Passport).

3. Follow the instructions in "[Configure HP CSA](#)" on the next page to configure HP CSA after running the upgrade installer. Do not copy back files from an earlier version of HP CSA unless you are instructed to do so. Many components of HP CSA, such as the JRE, JBoss, and Identity Management component, have been updated and therefore, the configuration files have also been updated. Some files may have retained the information you configured in the previous version. However, you should verify all information in the upgraded files.

If you are upgrading from HP CSA version 4.10 and you customized any files in the directory or subdirectories of `%CSA_HOME%\jboss-as-7.1.1.Final\domain\` that are not mentioned in the "Configure HP CSA" section, you will need to manually restore these customizations to the equivalent file in the `%CSA_HOME%\jboss-as\standalone\` directory.

All files in `%CSA_HOME%\jboss-as-7.1.1.Final\domain\servers\<server_name>\deployments*.war` are backed up to `%CSA_HOME%_CSA_4_50_0_installation\Backup\domain*.war`. You can refer to these files if you do not remember the customizations that you made. However, do not copy these files back to the upgraded version of HP CSA.

Configure HP CSA

Complete the following tasks to configure HP CSA on each CSA node:

- "Edit Properties" below (required)
- "Enable JNDI" on the next page (required)
- "Request a Software License" on the next page (required)
- "Configure Marketplace Portal Redirection" on page 22 (required)
- "Configure JBoss" on page 22 (required)
- "Configure a Secure Connection" on page 25 (required)
- "Configure the Identity Management Component" on page 26 (required)
- "Reconfigure the HP CSA Service" on page 27 (required)
- "Configure Global Search" on page 28 (required if using global search)
- "Configure HP Single Sign-On" on page 34 (required if using HP SSO)
- "Share Filesystem Resources" on page 35 (optional)

Edit Properties

Update property values to route requests to the Cloud Service Management Console through the load balancer and set the mode in which HP CSA is running.

1. Edit the `%CSA_HOME%\jboss-as\standalone\deployments\csa.war\WEB-INF\classes\csa.properties`:

- a. Set the following properties:

```
csa.provider.hostname=[LOAD_BALANCER_HOSTNAME]
csa.provider.port=[LOAD_BALANCER_CSA_HTTPS_PORT]
csa.provider.rest.protocol=https
deploymentMode=clustered
```

For example:

```
csa.provider.hostname=load_balancer.xyz.com
csa.provider.port=8443
csa.provider.rest.protocol=https
deploymentMode=clustered
```

Note: If you set the `csa.provider.hostname` attribute to the IP address of the system on which the load balancer is installed, the `Subject Alt Name` attribute of the load balancer's certificate that has been imported into HP CSA's keystore must also be set to the IP address of the system on which the load balancer is installed. If the load balancer's certificate does not contain the `Subject Alt Name` attribute or it is not set to the IP address of the system on which the load balancer is installed, you must regenerate and re-import the load balancer's certificate with the `Subject Alt Name` attribute set to the IP address of the system on which the load balancer is installed.

- b. Add and set the following property:

```
csa.provider.ip=[LOAD_BALANCER_IP_ADDR]
```

2. Edit the `%CSA_HOME%\jboss-as\standalone\deployments\csa.war\WEB-INF\classes\swagger.properties` and set the following property:

```
documentation.services.basePath=https://[LOAD_BALANCER_HOSTNAME]:[LOAD_BALANCER_CSA_HTTPS_PORT]/csa/rest
```

For example:

```
documentation.services.basePath=https://load_balancer.xyz.com:8443/csa/rest
```

Enable JNDI

Enable the Java Naming and Directory Interface (JNDI).

1. Open the `%CSA_HOME%\jboss-as\standalone\deployments\csa.war\WEB-INF\applicationContext.xml` file in a text editor.
2. Locate the comment `START HA Mode Configuration` and uncomment following content:

```
<jee:jndi-lookup id="channelGroup"  
jndi-name="java:jboss/clustering/group/server"  
expected-type="org.wildfly.clustering.group.Group"/>
```

3. If you modified the channel group, update the value of the `jndi-name` attribute to the new group name.
4. Save and exit the file.

Request a Software License

HP CSA version 4.50 requires a software license. HP CSA licensing is based on the number of operating system instances (OSIs) being used in current, active subscriptions.

After initial installation of HP CSA version 4.50, when you log in to the Cloud Service Management Console, a temporary 90-day trial license is activated. Once the trial license expires, you are limited to 25 OSIs. If you created more than 25 OSIs during the trial period, you cannot create any additional OSIs. You can add more licenses at any time to increase your OSI capacity.

When you request a software license, typically you supply the IP address of the system on which HP CSA is installed. However, in a clustered environment, use the IP address of the load balancer ([LOAD_BALANCER_IP_ADDR]) when requesting a software license. The license should be installed on only one node in the clustered environment.

For more information on managing software licenses, refer to the *HP Cloud Service Automation Configuration Guide*. For information on how to view, add, or delete a license, refer to the HP Cloud Service Management Console Help.

Configure Marketplace Portal Redirection

One of the URLs that can be used to launch the Marketplace Portal (for example, `https://load_balancer.xyz.com:8443/mpp`) redirects the request from the JBoss server (the HP CSA controller) to the Node.js server (the Marketplace Portal). By default, the request is redirected to the same system on which HP CSA is installed. However, in a clustered environment, the request must be redirected to the load balancer.

To update the redirection, do the following:

1. Open the `%CSA_HOME%\jboss-as\standalone\deployments\mpp.war\index.html` in a text editor.
2. Locate the following line:

```
<meta http-equiv="refresh" content="0;URL= https://[CSA_NODE_HOSTNAME]:[CSA_NODE_HTTPS_PORT]"/>
```

3. Replace `[CSA_NODE_HOSTNAME]` with `[LOAD_BALANCER_HOSTNAME]` and `[CSA_NODE_HTTPS_PORT]` with `[LOAD_BALANCER_MPP_HTTPS_PORT]`. For example:

```
<meta http-equiv="refresh" content="0;URL= https://[LOAD_BALANCER_HOSTNAME]:[LOAD_BALANCER_MPP_HTTPS_PORT]"/>
```

or

```
<meta http-equiv="refresh" content="0;URL= https://load_balancer.xyz.com:8089"/>
```

4. Save and exit the file.

Configure JBoss

Configure JBoss for use in an HP CSA clustered environment:

1. Open the %CSA_HOME%\jboss-as\standalone\configuration\standalone-full-ha.xml file in a text editor.

2. Locate the server property and configure a unique node name for the node. Locate

```
<server xmlns="urn:jboss:domain:2.2">
```

and set the name to *[CSA_NODE_NAME]*.

For example:

```
<server xmlns="urn:jboss:domain:2.2" name="csa_node1">
```

3. Update the jgroups subsystem default stack from udp to tcp. Change

```
<subsystem xmlns="urn:jboss:domain:jgroups:2.0" default-stack="udp">
```

to

```
<subsystem xmlns="urn:jboss:domain:jgroups:2.0" default-stack="tcp">
```

4. Locate the tcp stack and replace

```
<protocol socket-binding="jgroups-mping" type="MPING"/>
```

with

```
<protocol type="TCPPING">  
  <property name="initial_hosts">[LIST_OF_INITIAL_HOSTS]</property>  
    <property name="num_initial_members">[NUMBER_OF_INITIAL_HOSTS]</property>  
  
    <property name="port_range">1</property>  
    <property name="timeout">2000</property>  
</protocol>
```

where:

- *[LIST_OF_INITIAL_HOSTS]* is a comma-separated list of nodes (IP address and port) that define the cluster. It is recommended that all known nodes in the HP CSA controller cluster are listed. Other nodes that are not listed may join the cluster and you may remove a node from the list at any time. However, at least one initial host (a node in the list of initial hosts) must be running in order for other nodes (that are not included in this list) to join the cluster. The more initial hosts listed means that there is a greater chance an initial host is running so that an unlisted node may join the cluster (if no initial hosts are running, no unlisted nodes may join the cluster). Once the cluster is running, if you update the list of initial hosts, all nodes in the cluster must be restarted. The following are examples of a list of three initial hosts: *[CSA_NODE1_IP_ADDR][7600]*, *[CSA_NODE2_IP_ADDR][7600]*, *[CSA_NODE3_IP_ADDR][7600]* or

```
111.222.333.444[7600],111.222.333.445[7600],111.222.333.446[7600]
```

- `[NUMBER_OF_INITIAL_HOSTS]` is the number of initial hosts specified in the cluster.

For example:

```
<protocol type="TCPPING">  
  <property name="initial_hosts">111.222.333.444[7600],111.222.333.445[7600],  
111.222.333.446[7600]</property>  
  <property name="num_initial_members">3</property>  
  <property name="port_range">1</property>  
  <property name="timeout">2000</property>  
</protocol>
```

A TCP-based channel may be less efficient than its UDP counterpart as the size of the cluster increases beyond four to six nodes.

5. In the tcp stack and replace

```
<protocol type="pbcst.NAKACK2"/>
```

with

```
<protocol type="pbcst.NAKACK2">  
  <property name="use_mcast_xmit">>false</property>  
  <property name="use_mcast_xmit_req">>false</property>  
</protocol>
```

6. Update the messaging subsystem password. Change

```
<cluster-password>${jboss.messaging.cluster.password:CHANGE ME!!}</cluster-  
password>
```

to

```
<cluster-password>password</cluster-password>
```

7. Locate the transactions subsystem and configure the node identifier for the `<core-environment>` property (set the node identifier to the unique node name you configured in step 2). Locate

```
<subsystem xmlns="urn:jboss:domain:transactions:2.0">  
  <core-environment>
```

and add set the node identifier to `[CSA_NODE_NAME]`. For example:

```
<subsystem xmlns="urn:jboss:domain:transactions:2.0">  
  <core-environment node-identifier="csa_node1">
```

8. Add the node's IP address to the public interface. Locate


```
<interface name="public">
```

and add the IP address [CSA_NODE1_IP_ADDR]. For example:

```
<interface name="public">  
  <inet-address value="{jboss.bind.address:<CSA_Node_ip_Address>}" />  
</interface>
```

Configure a Secure Connection

Configure a secure connection (using a protocol such as TLS) on the CSA node for communication from the load balancer node and between each HP CSA node in the cluster.

1. To configure a secure connection between HP CSA and the load balancer node:
 - a. If you have not already done so, copy the certificate from the load balancer node (load_balancer.crt) to the %CSA_HOME%\jboss-as\standalone\configuration directory.
 - b. Import the certificate into the JVM on the CSA node using the following command:

```
"<csa_jre>\bin\keytool" -importcert -file %CSA_HOME%\jboss-as\  
standalone\configuration\load_balancer.crt -alias load_balancer_csa  
-keystore "<csa_jre>\lib\security\cacerts"
```

where <csa_jre> is the directory in which the JRE that is used by HP CSA is installed.

2. Copy and import the certificate of each HP CSA node to every other HP CSA node in the cluster:
 - a. Copy the certificate of each HP CSA node to every other HP CSA node in the cluster. The certificate file on each HP CSA node is %CSA_HOME%\jboss-as\standalone\configuration\jboss.crt.

For example, copy the certificates from csa_node2 and csa_node3 to csa_node1 to the directory C:\CSA-Certificates. Rename the certificate files with unique names, such as jboss-csa_node2.crt and jboss-csa_node3.crt.

- b. Import each certificate into the JVM of that HP CSA node.

For example, on csa_node1, run the following commands:

```
"<csa_jre>\bin\keytool" -importcert -file C:\CSA-Certificates\jboss-csa_  
node2.crt -alias csa_node2 -keystore "<csa_jre>\lib\security\cacerts"
```

```
"<csa_jre>\bin\keytool" -importcert -file C:\CSA-Certificates\jboss-csa_  
node3.crt -alias csa_node3 -keystore "<csa_jre>\lib\security\cacerts"
```

Configure the Identity Management Component

Complete the tasks in this section to configure the Identity Management component on the CSA node.

1. Edit the following content in the %CSA_HOME%\jboss-as\standalone\deployments\idm-service.war\WEB-INF\spring\applicationContext.properties file. Update the values of idm.csa.hostname and idm.csa.audit.hostname to [LOAD_BALANCER_HOSTNAME] and idm.csa.port and idm.csa.audit.port to [LOAD_BALANCER_HTTPS_PORT]:

```
idm.csa.hostname = [LOAD_BALANCER_HOSTNAME]
idm.csa.port = [LOAD_BALANCER_CSA_HTTPS_PORT]
.
.
.
# Properties for CSA Auditing Server
.
.
.
idm.csa.audit.hostname = [LOAD_BALANCER_HOSTNAME]" />
idm.csa.audit.port = [LOAD_BALANCER_HTTPS_PORT]" />
```

For example:

```
idm.csa.hostname = load_balancer.xyz.com
idm.csa.port = 8443
.
.
.
# Properties for CSA Auditing Server
.
.
.
idm.csa.audit.hostname = load_balancer.xyz.com" />
idm.csa.audit.port = 8443" />
```

2. Edit the following content in the %CSA_HOME%\jboss-as\standalone\deployments\csa.war\WEB-INF\applicationContext-security.xml file. Update the values of hostname to [LOAD_BALANCER_HOSTNAME] and port to [LOAD_BALANCER_CSA_HTTPS_PORT]:

```
<beans:bean id="idmConfig"
class="com.hp.ccue.identity.rp.IdentityServiceConfig">
  <beans:property name="protocol" value="https" />
  <beans:property name="hostname" value="[LOAD_BALANCER_HOSTNAME]" />
  <beans:property name="port" value="[LOAD_BALANCER_CSA_HTTPS_PORT]" />
  <beans:property name="servicePath" value="idm-service" /> <!-- or hpcloud-
idm-service if you don't change the name of the WAR -->
  <beans:property name="integrationAcctUserName" value="idmTransportUser" />
```

```
<beans:property name="integrationAcctPassword"
value="\${securityIdmTransportUserPassword}"/>
</beans:bean>
```

For example:

```
<beans:bean id="idmConfig"
class="com.hp.ccue.identity.rp.IdentityServiceConfig">
  <beans:property name="protocol" value="https"/>
  <beans:property name="hostname" value="load_balancer.xyz.com"/>
  <beans:property name="port" value="8443"/>
  <beans:property name="servicePath" value="idm-service"/> <!-- or hpcloud-
idm-service if you don't change the name of the WAR -->
  <beans:property name="integrationAcctUserName" value="idmTransportUser"/>
  <beans:property name="integrationAcctPassword"
value="\${securityIdmTransportUserPassword}"/>
</beans:bean>
```

Reconfigure the HP CSA Service

Reconfigure the HP CSA service to start, restart, and stop HP CSA using the `standalone-full-ha.xml` configuration file.

Caution: You must stop the HP CSA service before reconfiguring it.

1. Stop the HP Cloud Service Automation service:
 - a. Navigate to the Services screen (**Control Panel > Administrative Tools > Services**).
 - b. Right-click on the **HP Cloud Service Automation** service and select **Stop**.
2. Edit the `%CSA_HOME%\jboss-as\bin\service.bat` file.
 - a. Locate the two occurrences of `standalone.bat`.
 - b. Insert the command line option `-c standalone-full-ha.xml` into the `call standalone.bat > .r.lock >> run.log 2>&1` command line.

For example:

```
call standalone.bat -c standalone-full-ha.xml > .r.lock >> run.log 2>&1
```

3. Start the HP Cloud Service Automation service:
 - a. Navigate to the Services screen (**Control Panel > Administrative Tools > Services**).
 - b. Right-click on the **HP Cloud Service Automation** service and select **Start**.

Configure Global Search

Global search allows you to find a certain service offering, service instance, or subscription by a meaningful keyword from the Marketplace Portal. For service offerings, global search finds the keyword in the name, description, option sets, options, and properties. For service instances and subscriptions, global search finds the keyword in the name, description, and instance properties (name and value).

Global search must be enabled before being available on the Marketplace Portal. Refer to the *HP Cloud Service Automation Configuration Guide* for more information about enabling global search.

Caution: Do not enable global search in a FIPS 140-2 compliant environment.

To configure global search, do the following:

1. Edit the `%CSA_HOME%\[[[Undefined variable CSAVariables.dirElasticsearch]]]\config\elasticsearch.yml` file:
 - a. Uncomment the `cluster.name` property and set it to a unique name that is shared by all the nodes in the cluster. That is, if you have more than one clustered environment on the same network, each clustered environment should have a unique cluster name. All the nodes in the single clustered environment will share the same cluster name.

For example, `cluster.name: "csa_cluster"`
 - b. Set the `node.name` property to a unique name. Each node in the cluster must have a unique node name.

For example, `node.name: "node1"`
 - c. Uncomment the `node.master` property and set it to **true** to make this node a master node. All nodes in the cluster should be a master node.

For example, `node.master: true`
 - d. Optionally, uncomment and set the `node.data` property. Refer to the comments in the file for information of how to combine this and the `node.master` property settings to suit the requirements of the node.
 - e. Comment out the `node.local: true` property. When disabled, global search can find and communicate with other nodes on the network. If this property is left enabled, global search will not discover other nodes and will isolate itself from the network.
 - f. Set the `discovery.zen.ping.unicast.hosts` property to the IP addresses of the master nodes that perform discovery when new master or data nodes are started. Since all nodes in the cluster are master nodes, set this property to all IP addresses of the nodes in the cluster.

For example, `discovery.zen.ping.unicast.hosts:`
`["111.222.333.444", "111.222.333.445", "111.222.333.446"]`

- g. Locate the `Transport layer SSL` section and do the following:
- i. Verify that the following properties are set to these values (and if they are not set to these values, set them to these values):

```
searchguard.ssl.transport.node.keystore_type: JKS
searchguard.ssl.transport.node.keystore_password: changeit
searchguard.ssl.transport.node.truststore_type: JKS
searchguard.ssl.transport.node.truststore_password: changeit
```

- ii. Set the `searchguard.ssl.transport.node.keystore_filepath` property to the location of HP CSA's keystore. For example,

```
searchguard.ssl.transport.node.keystore_filepath: C:\Program
Files\Hewlett-Packard\CSA\jboss-as\standalone\configuration\keystore
```

- iii. Set the `searchguard.ssl.transport.node.truststore_filepath` property to the location of HP CSA's truststore. For example,

```
searchguard.ssl.transport.node.truststore_filepath: C:\Program
Files\Hewlett-Packard\CSA\openjre\lib\security\cacerts
```

- h. Locate the `REST layer SSL` section and do the following:

- i. Verify that the following properties are set to these values (and if they are not set to these values, set them to these values):

```
searchguard.ssl.transport.http.keystore_type: JKS
searchguard.ssl.transport.http.keystore_password: changeit
searchguard.ssl.transport.http.truststore_type: JKS
searchguard.ssl.transport.http.truststore_password: changeit
```

- ii. Set the `searchguard.ssl.transport.http.keystore_filepath` property to the location of HP CSA's keystore. For example,

```
searchguard.ssl.transport.http.keystore_filepath: C:\Program
Files\Hewlett-Packard\CSA\jboss-as\standalone\configuration\keystore
```

- iii. Set the `searchguard.ssl.transport.http.truststore_filepath` property to the location of HP CSA's truststore. For example,

```
searchguard.ssl.transport.http.truststore_filepath: C:\Program
Files\Hewlett-Packard\CSA\openjre\lib\security\cacerts
```

- i. Verify that the following properties are set to these values (and if they are not set to these values, set them to these values):

```
transport.tcp.port: 9300
http.port: 9201
http.enabled: true
discovery.zen.ping.timeout: 5s
```

- j. Save and exit the file.
2. Create the security key on one node and copy it to the other nodes in the cluster. The security key is used to authenticate the communication between the nodes in the cluster when sharing the shards and replicas of the inventory index. The security key must be the same on all nodes in the cluster.
 - a. On a CSA_Node (for example, csa_node1), restart the Elasticsearch 1.5.2 service:
 - i. Navigate to the Services screen (**Control Panel > Administrative Tools > Services**).
 - ii. Right-click on the **Elasticsearch 1.5.2** service and select **Restart**.
 - b. After the service has restarted on csa_node1, copy the %CSA_HOME%\[[[Undefined variable CSAVariables.dirElasticsearch]]]\searchguard_node_key.key file from csa_node1 to all other nodes in the cluster. Copy the file to the same directory (%CSA_HOME%\[[[Undefined variable CSAVariables.dirElasticsearch]]]\) and use the same file name on the other nodes.
 - c. On all nodes in the cluster except csa_node1, restart the Elasticsearch 1.5.2 service:
 - i. On all nodes in the cluster except csa_node1, navigate to the Services screen (**Control Panel > Administrative Tools > Services**).
 - ii. Right-click on the **Elasticsearch 1.5.2** service and select **Restart**.
 3. Configure the Identity Management component for global search.
 - a. Edit the %CSA_HOME%\[[[Undefined variable CSAVariables.dirSearchService]]]\app.json file. For msvc-basic-search, set the idmURL property to the URL of the load balancer and /idm-service proxy ([LOAD_BALANCER_HOSTNAME]:[LOAD_BALANCER_HTTPS_PORT]/idm-service).

For example,

```
"msvc-basic-search": {
  .
  .
  .
  "idmURL": "https://load_balancer.xyz.com:8443/idm-service",
```
 - b. Edit the %CSA_HOME%\jboss-as\standalone\deployments\csa.war\WEB-INF\classes\csa.properties file. Set the csa.provider.es.idmURL property to the URL of the load balancer and /idm-service proxy ([LOAD_BALANCER_HOSTNAME]:[LOAD_

`BALANCER_HTTPS_PORT]/idm-service).`

For example,

```
csa.provider.es.idmURL=https://load_balancer.xyz.com:8443/idm-service
```

4. Stop the HP Search Service and HP Cloud Service Automation services and then start them:
 - a. Navigate to the Services screen (**Control Panel > Administrative Tools > Services**).
 - b. Right-click on the **HP Search Service** service and select **Stop**.
 - c. Right-click on the **HP Cloud Service Automation** service and select **Stop**.
 - d. Right-click on the **HP Search Service** service and select **Start**.
 - e. Right-click on the **HP Cloud Service Automation** service and select **Start**.
5. If you changed the `cluster.name`, you must create new indexes. Do the following:

Note: The Elasticsearch 1.5.2 service must be running.

- a. Open a command prompt and navigate to `%CSA_HOME%\csa-search-service\bin\`.
- b. Run the following command:

```
"%CSA_HOME%\node.js\node.exe" create-index.js
```

If displayed, ignore the following errors:

```
ERROR: Error connecting to Elasticsearch server. Cannot create index
catalog. Error: DEPTH_ZERO_SELF_SIGNED_CERT
ERROR: Error connecting to Elasticsearch server. Cannot create index
inventory. Error: DEPTH_ZERO_SELF_SIGNED_CERT
```

It may take a few minutes for the first HP CSA artifact to be indexed.

6. You can verify the status of the global search cluster using the following commands from your web browser:
 - **`https://localhost:9201/_cluster/health?pretty=true`** - Displays information about the global search cluster's health, such as the number of nodes in the cluster (`number_of_nodes`).
 - **`https://localhost:9201/_cluster/state`** - Displays information about the state of the global search cluster, such as names of the nodes in the cluster.
 - **`https://localhost:9201/_cat/indices?v`** - Displays information about the following required indexes: `inventory`, `searchguard`, and `catalog`. If you run this command immediately after

running the `create-index.js` script, you may only see the searchguard index. It may take a few minutes before the first HP CSA artifact is indexed and all three indexes will be displayed.

Refer to the Elasticsearch online documentation at <https://www.elastic.co/guide/index.html> for more information about these commands.

Configure the TCP Communication Channel on JGroups

JBoss uses JGroups for communication between nodes in order to establish the cluster and manage membership of nodes in the cluster. By default, the JGroups subsystem on JBoss is configured to communicate through IP multicast messages using UDP. If the environment that you are using to set up the cluster does not support multicast messaging, the JGroups subsystem may alternatively be configured to use multiple TCP unicast messages.

To configure the TCP communication channel on JGroups, do the following:

1. Open the `%CSA_HOME%\jboss-as\standalone\configuration\standalone-full-ha.xml` file in an editor.
2. Update the jgroups subsystem default stack from `udp` to `tcp`. Change

```
<subsystem xmlns="urn:jboss:domain:jgroups:1.1" default-stack="udp">
```

to

```
<subsystem xmlns="urn:jboss:domain:jgroups:1.1" default-stack="tcp">
```

3. Locate the `tcp` stack and replace

```
<protocol socket-binding="jgroups-mping" type="MPING"/>
```

with

```
<protocol type="TCPPING">  
  <property name="initial_hosts">[LIST_OF_INITIAL_HOSTS]</property>  
  <property name="num_initial_members">[NUMBER_OF_INITIAL_HOSTS]</property>  
  
  <property name="port_range">1</property>  
  <property name="timeout">2000</property>  
</protocol>
```

where:

- `[LIST_OF_INITIAL_HOSTS]` is a comma-separated list of nodes (IP address and port) that define the cluster. It is recommended that all known nodes in the HP CSA controller cluster are listed. Other nodes that are not listed may join the cluster and you may remove a node from the list at any time. However, at least one initial host (a node in the list of initial hosts) must be

running in order for other nodes (that are not included in this list) to join the cluster. The more initial hosts listed means that there is a greater chance an initial host is running so that an unlisted node may join the cluster (if no initial hosts are running, no unlisted nodes may join the cluster). Once the cluster is running, if you update the list of initial hosts, all nodes in the cluster must be restarted. The following are examples of a list of three initial hosts: `[CSA_NODE1_IP_ADDR][7600],[CSA_NODE2_IP_ADDR][7600],[CSA_NODE3_IP_ADDR][7600]` or `111.222.333.444[7600],111.222.333.445[7600],111.222.333.446[7600]`

- `[NUMBER_OF_INITIAL_HOSTS]` is the number of initial hosts specified in the cluster.

For example:

```
<protocol type="TCPPING">
  <property name="initial_hosts">111.222.333.444[7600],111.222.333.445[7600],
  111.222.333.446[7600]</property>
  <property name="num_initial_members">3</property>
  <property name="port_range">1</property>
  <property name="timeout">2000</property>
</protocol>
```

A TCP-based channel may be less efficient than its UDP counterpart as the size of the cluster increases beyond four to six nodes.

4. Add the node's IP address to the public interface. Locate

```
<interface name="public">
```

and add the IP address `[CSA_NODE1_IP_ADDR]`. For example:

```
<interface name="public">
  <inet-address value="{jboss.bind.address:<CSA_Node_ip_Address>}" />
</interface>
```

5. Reconfigure the HP CSA service. In the `%CSA_HOME%\jboss-as\bin\service.bat` file:

- a. Locate the two occurrences of `standalone.bat`.
- b. Replace `call standalone.bat > .r.lock >> run.log 2>&1`

with

```
call standalone.bat -c standalone-full-ha.xml > .r.lock >> run.log 2>&1
```

Note: You do not need to specify the `-u [MULTICAST_ADDRESS]` option.

Configure HP Single Sign-On

If you have integrated HP Single Sign-On (HP SSO) between HP CSA and another application (such as HP Operations Orchestration), you must configure HP SSO on the CSA node.

1. Open the `%CSA_HOME%\jboss-as\standalone\deployments\csa.war\WEB-INF\hpssoConfiguration.xml` file in a text editor.
2. Locate the following content:

```
<onFailure>
  .
  .
  .
  <action name="redirectToAP">
    <targetUrl>https://[CSA_NODE_HOSTNAME]:[CSA_NODE_PORT]
/csa/login</targetUrl>
  </action>
```

3. Replace `[CSA_NODE_HOSTNAME]` and `[CSA_NODE_PORT]` with the load balancer hostname (`LOAD_BALANCER_HOSTNAME`) and the virtual host port for the HP CSA nodes (`LOAD_BALANCER_CSA_HTTPS_PORT`). For example:

```
<onFailure>
  .
  .
  .
  <action name="redirectToAP">
    <targetUrl>https://load_balancer.xyz.com:8443/csa/login</targetUrl>
  </action>
```

4. Locate the `initString` value in the `crypto` element. The `initString` setting for HP CSA must be the same value for all nodes in the cluster and any applications (such as HP Operations Orchestration) that are integrated with HP Single Sign-On. The `initString` value represents a secret key and should be treated as such in your environment.
5. Copy the `initString` value to the `%CSA_HOME%\jboss-as\standalone\deployments\csa.war\WEB-INF\hpssoConfiguration.xml` file on all other nodes in the cluster.
6. Copy the `initString` value to the `%CSA_HOME%\jboss-as\standalone\deployments\idm-service.war\WEB-INF\hpssoConfig.xml` file on this and all other nodes in the cluster.
7. Configure this `initString` value in any applications that are integrated with HP CSA using HP Single Sign-On.

Share Filesystem Resources

Configure HP CSA to share filesystem resources to free up disk space (this task is optional). Static filesystem resources, such as images or JSP files, can be stored on one system and shared by all nodes in the cluster. The following example shows how to share the `images` directory that is installed with each instance of HP CSA.

HP CSA provides images that are stored in an `images` directory (for example, `%CSA_HOME%\jboss-as\standalone\deployments\csa.war\images`). From the Cloud Service Management Console, you may also upload images which are saved to the same `images` directory. You can store these images on a shared filesystem on a network and the images on this single shared filesystem can be used by all nodes in the cluster.

To configure HP CSA to use a shared filesystem to store images, do the following:

1. HP recommends that you run the HP CSA service as a non-administrative user. Refer to the *HP Cloud Service Automation Configuration Guide* for information on how to allow non-administrator users to start and stop the HP CSA service. If you follow the examples in the configuration guide, you will create a user named `CSAUser` and run the HP CSA service as this user. If you run the HP CSA service as a non-administrator user, the examples in this section assume that you have created the `CSAUser`.
2. On a remote system, create a directory or folder that will contain the shared files and share the folder. For example, if you create a folder named `C:\CSA\images` on the remote system, in a command prompt on the remote system, type **net share CSA_images=C:\CSA\images**.
3. Copy the `%CSA_HOME%\jboss-as\standalone\deployments\csa.war\images` directory from one of the CSA nodes to the shared folder on the remote system.
4. Delete the `%CSA_HOME%\jboss-as\standalone\deployments\csa.war\images` directory from each CSA node.
5. On each CSA node, create a symbolic link to the shared folder. For example, from a command prompt, type the following commands:

```
mklink /d %CSA_HOME%\jboss-as\standalone\deployments\csa.war\images  
\\<SharedFilesystem>\CSA_images
```

Note: If you configured a non-administrator user to start and stop the HP CSA service (for example, `CSAUser`), you must create the symbolic link as this user.

6. On each CSA node, do the following
 - a. Navigate to **Control Panel > Administrative Tools > Services**.
 - b. Right-click on the HP Cloud Service Automation service and select **Properties**.

- c. Click the **Log On** tab.
- d. Select **This account**, enter the user who starts and stops the HP CSA service (for example, if you are running the HP CSA service as a non-administrator user such as CSAUser, enter `.\CSAUser`; if you are running the HP CSA service as an administrator, enter `.\Administrator`), and enter the user's password.
- e. Click **OK**.

Chapter 4: Configure the Marketplace Portal Node

This chapter describes how to install, upgrade, and configure a remote Marketplace Portal instance on the Marketplace Portal node (for example, MPP_Node1, MPP_Node2, or MPP_Node3) in a cluster configured for high availability. The Marketplace Portal should be installed as a remote instance on a Marketplace Portal node in its own clustered environment.

To configure the Marketplace Portal, do the following:

- Install or upgrade the remote Marketplace Portal instance
- Configure the remote Marketplace Portal instance

Install the Remote Marketplace Portal Instance

Install a remote instance of the Marketplace Portal on each Marketplace Portal node, as described in the *HP Cloud Service Automation Installation Guide* with the following exceptions:

- You must install the same version of HP CSA on each node (including the CSA nodes).
- When selecting a location in which to install the Marketplace Portal, select the same location for all Marketplace Portal nodes.
- When configuring the HP CSA Host, use the fully-qualified domain name of the Load_Balancer node (for example, load_balancer.xyz.com or `[LOAD_BALANCER_HOSTNAME]`).
- When configuring the HP CSA Port, use the port of the load balancer installed on the Load_Balancer node (for example, 8443 or `[LOAD_BALANCER_CSA_HTTPS_PORT]`).

The *HP Cloud Service Automation Installation Guide* can be downloaded from the HP Software Support Web site at <http://h20230.www2.hp.com/selfsolve/manuals/> (this site requires that you register with HP Passport).

Upgrade the Remote Marketplace Portal Instance

Upgrade the remote Marketplace Portal instance on each Marketplace Portal node as described in the *HP Cloud Service Automation Upgrade Guide* with the following exception:

- If you are upgrading from HP CSA version 4.10, edit the `%CSA_HOME%\portal\conf\mpp.json` file. Update the value of the `ha_enabled` property to disable the Marketplace Portal from using the Redis cache server for session persistence. The load balancer will use sticky sessions for session persistence. For example:

```
"ha": {  
  "enabled": false,  
  .  
  .  
  .  
}
```

The *HP Cloud Service Automation Upgrade Guide* can be downloaded from the HP Software Support Web site at <http://h20230.www2.hp.com/selfsolve/manuals/> (this site requires that you register with HP Passport).

Configure the Remote Marketplace Portal Instance

To configure the remote Marketplace Portal instance on each Marketplace Portal node, do the following:

1. If you have not done so already, copy the certificate of the load balancer from the Load_Balancer node (for example, load_balancer.crt) to the %CSA_HOME%\portal\conf\ directory on the Marketplace Portal node.
2. Edit the following content in the %CSA_HOME%\portal\conf\mpp.json file:
 - For the provider, update the url attribute value to use [LOAD_BALANCER_HOSTNAME] and [LOAD_BALANCER_CSA_HTTPS_PORT] and ca to use the location of the certificate of the load balancer. For example:

```
"provider": {  
  "url": "https://[LOAD_BALANCER_HOSTNAME]:[LOAD_BALANCER_CSA_HTTPS_PORT]"  
  "ca": "%CSA_HOME%/portal/conf/load_balancer.crt"  
  .  
  .  
  .  
},
```

or

```
"provider": {  
  "url": "https://load_balancer.xyz.com:8443"  
  "ca": "%CSA_HOME%/portal/conf/load_balancer.crt"  
  .  
  .  
  .  
},
```

- For the idmProvider, update the values of the url attribute to use [LOAD_BALANCER_HOSTNAME] and [LOAD_BALANCER_CSA_HTTPS_PORT], returnUrl to use [LOAD_BALANCER_HOSTNAME] and [LOAD_BALANCER_MPP_HTTPS_PORT], and ca to use

the location of the certificate of the load balancer. For example:

```
"idmProvider": {  
  "url": "https://[LOAD_BALANCER_HOSTNAME]:[LOAD_BALANCER_CSA_HTTPS_PORT]",  
  "returnUrl": "https://[LOAD_BALANCER_HOSTNAME]:[LOAD_BALANCER_MPP_HTTPS_  
PORT]",  
  "ca": "%CSA_HOME%/portal/conf/load_balancer.crt"  
  .  
  .  
  .  
},
```

or

```
"idmProvider": {  
  "url": "https://load_balancer.xyz.com:8443",  
  "returnUrl": "https://load_balancer.xyz.com:8089",  
  "ca": "%CSA_HOME%/portal/conf/load_balancer.crt"  
  .  
  .  
  .  
},
```

3. Restart the Marketplace Portal service:
 - a. Navigate to the Services screen (**Control Panel > Administrative Tools > Services**).
 - b. Right-click on the **Marketplace Portal** service and select **Restart**.

Chapter 5: Common Tasks

This chapter provides information on how to perform common tasks.

Tasks include:

- "Start HP CSA" below
- "Stop HP CSA" below
- "Start the Marketplace Portal" on the next page
- "Stop the Marketplace Portal" on the next page
- "Launch the Cloud Service Management Console" on the next page
- "Launch the Marketplace Portal" on the next page

Start HP CSA

Caution: If you have not already done so, [reconfigure the HP CSA service](#) to start and stop HP CSA using the `standalone-full-ha.xml` configuration file (you should have completed these steps when you configured the CSA node).

To start HP CSA:

1. On the server that hosts HP CSA, navigate to **Control Panel > Administrative Tools > Services**.
2. Right-click on the HP Cloud Service Automation service and select **Start**.

Stop HP CSA

Caution: If you have not already done so, [reconfigure the HP CSA service](#) to start and stop HP CSA using the `standalone-full-ha.xml` configuration file (you should have completed these steps when you configured the CSA node).

To stop HP CSA:

1. On the server that hosts HP Cloud Service Automation, navigate to **Control Panel > Administrative Tools > Services**.

2. Right-click on the HP Cloud Service Automation service and select **Stop**.

Start the Marketplace Portal

To start the Marketplace Portal service, do the following:

1. Navigate to the Services screen (**Control Panel > Administrative Tools > Services**).
2. Right-click on the **Marketplace Portal** service and select **Start**.

Stop the Marketplace Portal

To stop the Marketplace Portal service:

1. On the server that hosts Marketplace Portal, navigate to **Control Panel > Administrative Tools > Services**.
2. Right-click on the **Marketplace Portal** service and select **Stop**.

Launch the Cloud Service Management Console

Launch the Cloud Service Management Console through the load balancer by opening one of the following URLs in a supported Web browser:

- `http://[LOAD_BALANCER_HOSTNAME]:[LOAD_BALANCER_HTTP_PORT]/csa`
For example, `http://load_balancer.xyz.com:8080/csa`
- `https://[LOAD_BALANCER_HOSTNAME]:[LOAD_BALANCER_CSA_HTTPS_PORT]/csa`
For example, `https://load_balancer.xyz.com:8443/csa`

Launch the Marketplace Portal

To launch the default Marketplace Portal, open the following URL in a supported Web browser:

- `https://[LOAD_BALANCER_HOSTNAME]:8443/mpp`
For example, `https://load_balancer.xyz.com:8443/mpp`

The organization associated with the default Marketplace Portal is defined in the `%CSA_HOME%\portal\conf\mpp.json` file. By default, this is the sample organization that is installed with HP CSA (CSA_CONSUMER). To modify the organization associated with the default Marketplace Portal, modify the `defaultOrganizationName` property value by setting it to the `<organization_identifier>` of the desired organization, where `<organization_identifier>` is the unique name that HP Cloud Service Automation assigns to the organization, based on the organization display name

(the organization identifier can be found in the General Information section of the **Organizations** tile of the Cloud Service Management Console).

To launch an organization's Marketplace Portal, open one of the following URLs in a supported Web browser:

- `http://[LOAD_BALANCER_HOSTNAME]:[LOAD_BALANCER_HTTP_PORT]/org/<organization_identifier>`
For example, `http://load_balancer.xyz.com:8080/org/ORGANIZATION_A`
- `https://[LOAD_BALANCER_HOSTNAME]:[LOAD_BALANCER_MPP_HTTPS_PORT]/org/<organization_identifier>`
For example, `https://load_balancer.xyz.com:8089/org/ORGANIZATION_A`

where `<organization_identifier>` is the unique name that HP Cloud Service Automation assigns to the organization, based on the organization display name (the organization identifier can be found in the General Information section of the **Organizations** tile of the Cloud Service Management Console)

Caution: Do not launch more than one organization-specific Marketplace Portal from the same browser session. For example, if you launch ORGANIZATION_A's Marketplace Portal in a browser, do not open a tab or another window from that browser and launch ORGANIZATION_B's Marketplace Portal. Otherwise, the user who has logged in to the Marketplace Portal launched for ORGANIZATION_A will start to see data for ORGANIZATION_B.

Instead, start a new browser session to launch another organization's Marketplace Portal.

Chapter 6: Troubleshoot the HP CSA Clustered Environment

This section describes some of the common problems you may encounter while configuring your HP CSA clustered environment for high availability. Workarounds are provided, when available. Additional information may be found in the *HP Cloud Service Automation Release Notes*.

Problem

Accessing the Cloud Service Management Console or Marketplace Portal may generate an error when running in a clustered environment with a load balancer. The following error may appear in the log file:

```
flex.messaging.security.SecurityException: Secure endpoint
'/messagebroker/amfsecure' must be contacted via a secure protocol
```

Cause

The client side traffic is configured as TLS and the load balancer redirects HTTPS traffic to HTTP.

Workaround

Make the following changes on all CSA nodes:

In the `%CSA_HOME%\jboss-as\standalone\deployments\csa.war\WEB-INF\flex\services-config.xml` file, update the endpoint class value for the `csa-secure-amf` channel to **flex.messaging.endpoints.AMFEndpoint**.

For example, change the following from:

```
<channel-definition id="csa-secure-amf" class="mx.messaging.channels.SecureAMFChannel">
  <endpoint url="https://{server.name}:{server.port}/{context.root}/messagebroker/amfsecure"
class="flex.messaging.endpoints.SecureAMFEndpoint" />
  <properties>
    <add-no-cache-headers>>false</add-no-cache-headers>
  </properties>
</channel-definition>
```

to

```
<channel-definition id="csa-secure-amf" class="mx.messaging.channels.SecureAMFChannel">
  <endpoint url="https://{server.name}:{server.port}/{context.root}/messagebroker/amfsecure"
class="flex.messaging.endpoints.AMFEndpoint" />
  <properties>
    <add-no-cache-headers>>false</add-no-cache-headers>
  </properties>
</channel-definition>
```

Send Documentation Feedback

If you have comments about this document, you can [contact the documentation team](#) by email. If an email client is configured on this system, click the link above and an email window opens with the following information in the subject line:

Feedback on Configuring an HP CSA Cluster for High Availability Using a Load Balancer (Cloud Service Automation 4.50)

Just add your feedback to the email and click send.

If no email client is available, copy the information above to a new message in a web mail client, and send your feedback to clouddocs@hp.com.

We appreciate your feedback!

