

# HP Systinet Plug-In for Visual Studio

Software Version: 10.01  
Windows and Linux Operating Systems

## User Guide for Visual Studio

Document Release Date: June 2015  
Software Release Date: June 2015



## Legal Notices

### Warranty

The only warranties for HP products and services are set forth in the express warranty statements accompanying such products and services. Nothing herein should be construed as constituting an additional warranty. HP shall not be liable for technical or editorial errors or omissions contained herein.

The information contained herein is subject to change without notice.

### Restricted Rights Legend

Confidential computer software. Valid license from HP required for possession, use or copying. Consistent with FAR 12.211 and 12.212, Commercial Computer Software, Computer Software Documentation, and Technical Data for Commercial Items are licensed to the U.S. Government under vendor's standard commercial license.

### Copyright Notice

© Copyright 2003-2015 Hewlett-Packard Development Company, L.P.

### Trademark Notices

Adobe™ is a trademark of Adobe Systems Incorporated.

Microsoft®, Windows®, Windows® XP and Windows 7® are U.S. registered trademarks of Microsoft Corporation.

Oracle and Java are registered trademarks of Oracle and/or its affiliates.

## Documentation Updates

The title page of this document contains the following identifying information:

- Software Version number, which indicates the software version.
- Document Release Date, which changes each time the document is updated.
- Software Release Date, which indicates the release date of this version of the software.

To check for recent updates or to verify that you are using the most recent edition of a document, go to: <http://h20230.www2.hp.com/selfsolve/manuals>

This site requires that you register for an HP Passport and sign in. To register for an HP Passport ID, go to: <http://h20229.www2.hp.com/passport-registration.html>

Or click the **New users - please register** link on the HP Passport login page.

You will also receive updated or new editions if you subscribe to the appropriate product support service. Contact your HP sales representative for details.

## Support

Visit the HP Software Support Online web site at: <http://www.hp.com/go/hpsupport>

This web site provides contact information and details about the products, services, and support that HP Software offers.

HP Software online support provides customer self-solve capabilities. It provides a fast and efficient way to access interactive technical support tools needed to manage your business. As a valued support customer, you can benefit by using the support web site to:

- Search for knowledge documents of interest
- Submit and track support cases and enhancement requests
- Download software patches
- Manage support contracts
- Look up HP support contacts
- Review information about available services
- Enter into discussions with other software customers
- Research and register for software training

Most of the support areas require that you register as an HP Passport user and sign in. Many also require a support contract. To register for an HP Passport ID, go to:

<http://h20229.www2.hp.com/passport-registration.html>

To find more information about access levels, go to:

[http://h20230.www2.hp.com/new\\_access\\_levels.jsp](http://h20230.www2.hp.com/new_access_levels.jsp)

**HP Software Solutions Now** accesses the HPSW Solution and Integration Portal Web site. This site enables you to explore HP Product Solutions to meet your business needs, includes a full list of Integrations between HP Products, as well as a listing of ITIL Processes. The URL for this Web site is

<http://h20230.www2.hp.com/sc/solutions/index.jsp>

## About this PDF Version of Online Help

This document is a PDF version of the online help. This PDF file is provided so you can easily print multiple topics from the help information or read the online help in PDF format. Because this content was originally created to be viewed as online help in a web browser, some topics may not be formatted properly. Some interactive topics may not be present in this PDF version. Those topics can be successfully printed from within the online help.

# Contents

Chapter 1: About this Guide .....	1
Document Conventions .....	1
Support .....	2
Documentation Updates .....	2
Chapter 2: Systinet Plug-In for Visual Studio .....	4
Overview .....	4
Use Cases .....	5
Chapter 3: Getting Started .....	6
Installing Systinet Plug-In for Visual Studio .....	6
Setting Up 2-way SSL .....	7
Chapter 4: Exploring the Catalog .....	8
Search Results .....	8
Dynamically Include Artifacts into Search Dialog .....	9
Searching the Catalog .....	11
Artifact Detail View .....	12
Viewing Artifacts in HP Systinet .....	13
Using HP Systinet Navigator .....	14
Chapter 5: Modifying Resources .....	15
Downloading HP Systinet Resources .....	15
Uploading HP Systinet Resources .....	16
Synchronizing Resources .....	18
Deleting HP Systinet Resources .....	19
Chapter 6: Validating Resources .....	20
Setting Up Validation .....	20
Setting Up Policies .....	20
Updating Policies .....	21
Removing Policies .....	21
Ad Hoc Validation .....	22
Running Ad Hoc Validation .....	22
Viewing Ad Hoc Validation Results .....	22
Revalidating a Document .....	24
Exporting Reports .....	24
Setting Report Style .....	25
Chapter 7: Adding Web References .....	26

Chapter 8: Requesting Consumption of HP Systinet Artifacts .....	27
Chapter 9: Requesting Lifecycle Approval .....	28
Appendix A: Dialog Boxes .....	29
Policy Validation Options .....	29
Validate Policies Dialog .....	30
Appendix B: Preferences .....	32
Setting Synchronization .....	32
Setting the Domain .....	33
Setting the Environment .....	34
Setting the Server .....	35
Appendix C: Configuring Plugin .....	37
Configuring Artifact Hierarchies .....	38
Configuring Localization .....	39
Configuring Search and Detail Parameters .....	40
Configuring Search Results .....	41
Send Documentation Feedback .....	42

# Chapter 1: About this Guide

Welcome to the HP Systinet Plug-In for Visual Studio Guide. This guide explains how to use the Systinet Plug-In for Microsoft Visual Studio with HP Systinet.

This guide contains the following chapters:

- "Systinet Plug-In for Visual Studio" on page 4
- "Getting Started" on page 6
- "Exploring the Catalog" on page 8
- "Modifying Resources" on page 15
- "Validating Resources" on page 20
- "Adding Web References" on page 26

## Document Conventions

This document uses the following typographical conventions:

<b>run.bat make</b>	Script name or other executable command plus mandatory arguments.
[--help]	Command-line option.
either   or	Choice of arguments.
<i>replace_value</i>	Command-line argument that should be replaced with an actual value.
{arg1   arg2}	Choice between two command-line arguments where one or the other is mandatory.
<b>java -jar hpsystinet.jar</b>	User input.
C:\System.ini	File names, directory names, paths, and package names.
a.append(b);	Program source code.
server.Version	Inline Java class name.
getVersion()	Inline Java method name.
<b>Shift+N</b>	Combination of keystrokes.
<b>Service View</b>	Label, word, or phrase in a GUI window, often clickable.

<b>OK</b>	Button in a user interface.
<b>New&gt;Service</b>	Menu option.

## Support

You can visit the HP Software Support Web site at:

<http://www.hp.com/go/hpsoftwaresupport>

HP Software Support Online provides customer self-solve capabilities. It provides a fast and efficient way to access interactive technical support tools needed to manage your business. As a valued support customer, you can benefit by using the HP Software Support web site to:

- Search for knowledge documents of interest
- Submit and track support cases and enhancement requests
- Download software patches
- Manage support contracts
- Look up HP support contacts
- Review information about available services
- Enter into discussions with other software customers
- Research and register for software training

Most of the support areas require that you register as an HP Passport user and sign in. Many also require a support contract.

To find more information about access levels, go to:

[http://h20230.www2.hp.com/new\\_access\\_levels.jsp](http://h20230.www2.hp.com/new_access_levels.jsp)

To register for an HP Passport ID, go to:

<http://h20229.www2.hp.com/passport-registration.html>

## Documentation Updates

This guide's title page contains the following identifying information:

- Software version number, which indicates the software version

- Document release date, which changes each time the document is updated
- Software release date, which indicates the release date of this version of the software

To check for recent updates, or to verify that you are using the most recent edition of a document, go to:

<http://h20230.www2.hp.com/selfsolve/manuals>

This site requires that you register for an HP Passport and sign-in. To register for an HP Passport ID, go to:

<http://h20229.www2.hp.com/passport-registration.html>

Or click the **New users - please register** link on the HP Passport logon page.

You will also receive updated or new editions if you subscribe to the appropriate product support service. For details, contact your HP sales representative.



## Chapter 2: Systinet Plug-In for Visual Studio

HP Systinet enables your organization to manage the growth and development of your service infrastructure. HP Systinet Plug-In for Visual Studio bridges the gap between your development environment and HP Systinet.

This chapter introduces Systinet Plug-In for Visual Studio in the following sections:

- ["Overview " below](#)
- ["Use Cases " on the next page](#)

### Overview

HP Systinet Plug-In for Visual Studio is a set of features enabling you to integrate HP Systinet with your IDE.

Systinet Plug-In for Visual Studio contains the following features:

- **Search**

Search and explore the HP Systinet Catalog to find the service definitions you require.

For details, see ["Exploring the Catalog " on page 8](#).

- **Modify**

Download resources from HP Systinet, modify them in your IDE, and then upload them back to HP Systinet.

For details, see ["Modifying Resources " on page 15](#)

- **Add Web References**

Add web references to your project from Catalog resources.

For details, see ["Adding Web References " on page 26](#)

- **Request Consumption of HP Systinet Artifacts**

Form a contract to consume artifacts in the HP Systinet Catalog.

For details, see ["Requesting Consumption of HP Systinet Artifacts " on page 27](#)

- **Request Lifecycle Approval of HP Systinet Artifacts**

Request the approval of the current lifecycle stage for HP Systinet artifacts.

For details, see ["Requesting Lifecycle Approval " on page 28.](#)

## Use Cases

Systinet Plug-In for Visual Studio is designed to assist in the development of services for the following users:

- **Service Architects**

- Download resources.

Import service definition files from HP Systinet.

For details, see ["Downloading HP Systinet Resources " on page 15.](#)

- Edit resources.

Edit service definitions using the standard functionality of your IDE.

- Upload resources.

Export your service definition files to HP Systinet.

For details, see ["Uploading HP Systinet Resources " on page 16.](#)

- **Service Consumers**

- Locate the services you want to consume.

Catalog Search enables you to identify definitions of the services you want to consume. You can limit the search to services that are consumable, or to a particular lifecycle stage (for example, Production).

For details, see ["Searching the Catalog " on page 11.](#)

- Add web references for services you want to consume.

Using the service definitions located in searches, add a web reference from the service definition to assist the development of your service consuming application.

For details, see ["Adding Web References " on page 26.](#)

## Chapter 3: Getting Started

Systinet Plug-In for Visual Studio works in conjunction with your existing development platform.

This chapter contains the following sections:

- ["Installing Systinet Plug-In for Visual Studio" below](#)
- ["Setting Up 2-way SSL" on the next page](#)

### Installing Systinet Plug-In for Visual Studio

HP Systinet Plug-In for Visual Studio is a plug-in for MS Visual Studio distributed as the following installation package:

hp-systinet-visual-studio-plugin-4.10.msi

#### System Requirements

Operating System	Java JDK	IDE
Windows 7	N/A	MS Visual Studio 2010 MS Visual Studio 2012 MS Visual Studio 2013
Windows 8	N/A	MS Visual Studio 2010 MS Visual Studio 2012 MS Visual Studio 2013
Windows 8.1	N/A	MS Visual Studio 2010 MS Visual Studio 2012 MS Visual Studio 2013

**Tip:** For supported platforms and known issues, see readme.txt alongside the package.

#### To install Systinet Plug-In for Visual Studio:

- Execute the package, hp-systinet-visual-studio-plugin-4.10.msi

This documentation refers to the installation location as VSP\_HOME.

#### To start Systinet Plug-In for Visual Studio:

- Start your installation of Visual Studio.

The first time you start Systinet Plug-In for Visual Studio, if opening the Search Dialog, you are prompted for the connection URL and credentials for the HP Systinet server and the domain to use.

**Caution:** Systinet Plug-In for Visual Studio encrypts and store passwords. Saved passwords are stored in a file that is difficult but not impossible for an intruder to read.

## Setting Up 2-way SSL

You can set up 2-way SSL communication between Systinet Plug-In for Visual Studio and HP Systinet using the client certificate for your SSL environment.

### To enable 2-way SSL:

1. Close Systinet Plug-In for Visual Studio
2. Open %AppData%/Systinet Visual Studio plug-in/app.config with a text editor.

%AppData% is the system variable for the Windows Application Data folder. Open a command prompt and use command, **echo %AppData%** to verify the location.

3. Modify the following section of the configuration file:

```
<configuration>
...
  <clientCert>
    <keyfile>clientCert.p12</keyfile>
    <password>changeit</password>
  </clientCert>
...
</configuration>
```

Replace the keyfile element with the absolute path to your client certificate file.

Replace the password element with the certificate file password.

4. Save app.config.

## Chapter 4: Exploring the Catalog

Systinet Plug-In for Visual Studio enables you to search and examine data in the HP Systinet Catalog:

- ["Searching the Catalog " on page 11](#)  
Locate specific artifacts using lifecycle, consumption, and property criteria.
- ["Search Results" below](#)  
View artifacts matching your search criteria and their related artifacts.
- ["Artifact Detail View " on page 12](#)  
Examine individual artifacts in detail.
- ["Viewing Artifacts in HP Systinet " on page 13](#)  
Open the HP Systinet Artifact Details page from Systinet Plug-In for Visual Studio.
- ["Using HP Systinet Navigator " on page 14](#)  
Open an instance of Systinet in Systinet Plug-In for Visual Studio to view selected artifacts using the Graphical Navigator feature.

Systinet Plug-In for Visual Studio supports download for the following file types:

- BPEL
- DTD
- SCA
- Swagger
- WADL
- WSDL
- XSD

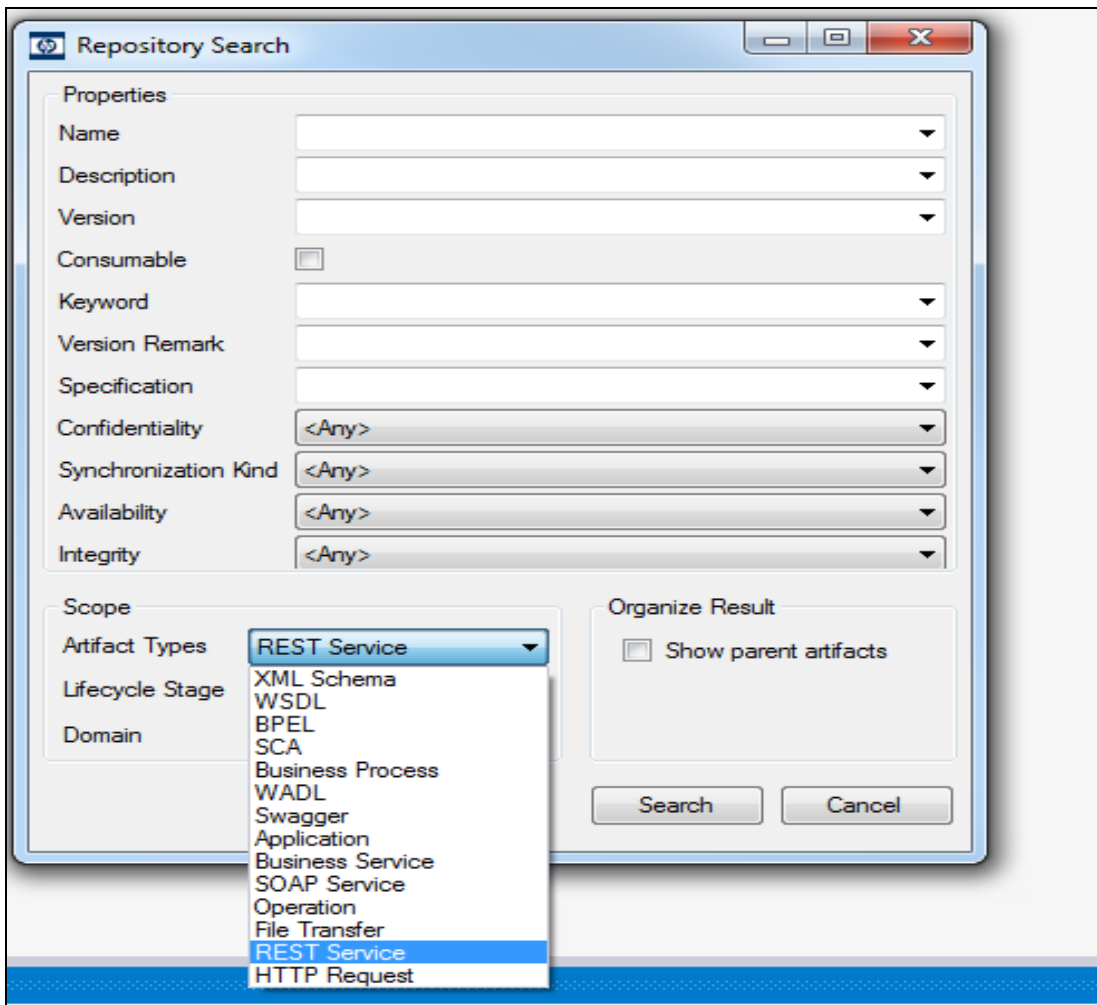
## Search Results

Systinet Plug-In for Visual Studio displays the results of a Catalog search in the Catalog Search Results tab.

To search the Catalog, see ["Searching the Catalog " on page 11](#).

The results show a tree of artifacts for each artifact matching the search criteria, as shown in below:

## Catalog Search Results View



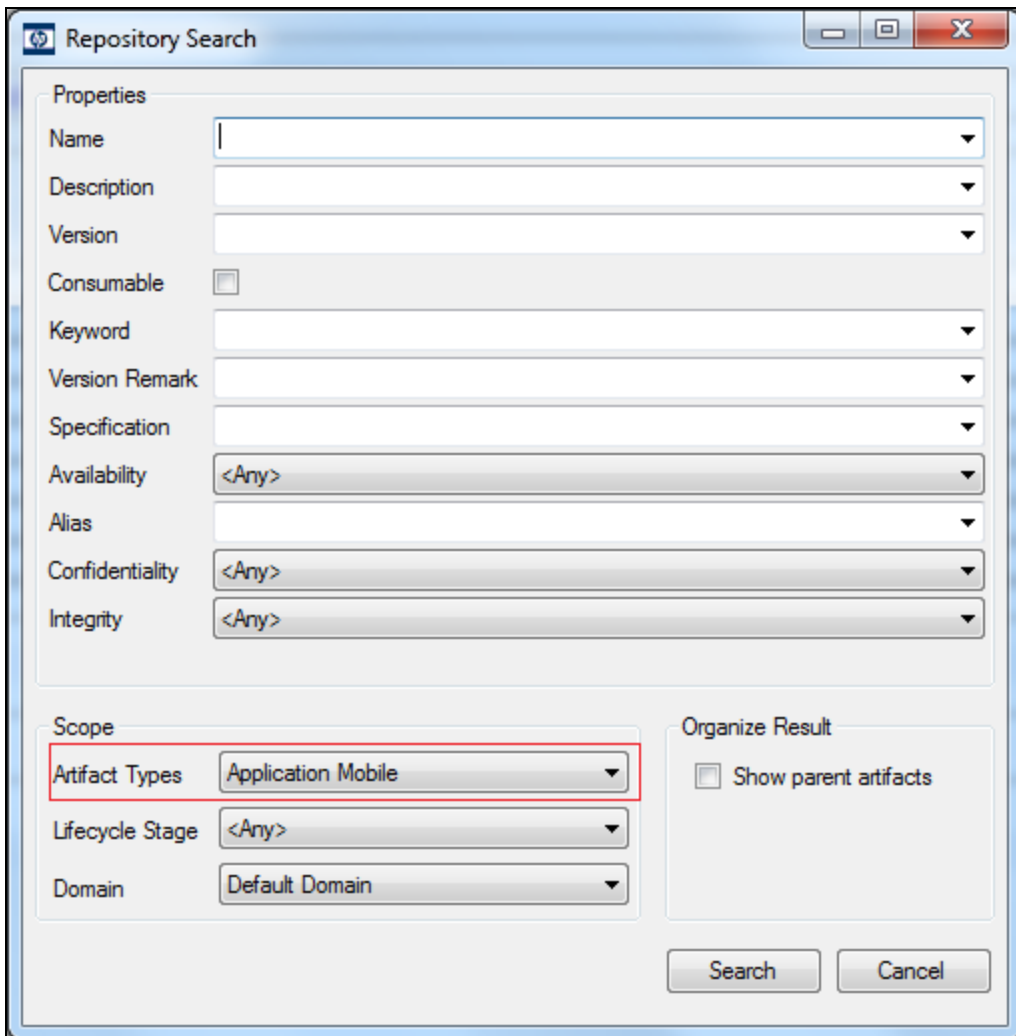
The tree for each matching artifact contains any child artifacts. If you select **Show Parent Artifacts** in your search, the tree also includes parent artifacts.

Double-click an artifact name in the Catalog Search Results tab to view its details in an artifact details tab. The tab name is the name of the artifact. For details, see ["Artifact Detail View " on page 12.](#)

To download any associated service resources, right-click a result entry, and select **Save As**. For details, see ["Downloading HP Systinet Resources " on page 15.](#)

## Dynamically Include Artifacts into Search Dialog

The Visual Studio plugin dynamically includes artifact type that are extended from **"implementationArtifact"** or **"hpsoaAppComponentArtifact"** into Search Dialog:



Custom artifact type is dynamically included into “**Artifact Types**” drop-down list in the Repository Search dialog when:

- The artifact is extended from “**implementationArtifact**” or “**hpsoaAppComonentArtifact**” artifact type.
- The artifact is not an abstract artifact.
- The artifact is not deprecated.
- The search-configuration.xml file do not contain configuration/mapping for the artifact.

Included artifact type will have the following properties:

- Visible properties in search result such as Name, Version, Description and so on.
- Invisible properties in details view such as lastRevision, revision, identifierBag, artifactType, categoryBag, stakeholderEmail and so on.

The hierarchical tree of included artifact type **implementationArtifact**:

Hierarchical tree	XML Configuration
<ul style="list-style-type: none"> <li>• Artifacts are extended from “hpsoaAppComponentArtifact” artifact type:                             <ul style="list-style-type: none"> <li>■ Business Service Artifact Type                                     <ul style="list-style-type: none"> <li>○ Included Artifacts</li> </ul> </li> </ul> </li> </ul>	<pre> &lt;configuration&gt;   &lt;hierarchical&gt;     &lt;artifact       localName="{sub_ hpsoaAppComponentArtifactType}"&gt;       &lt;artifact         localName="businessServiceArtifact"         upRef="r_partOf" downRef="r_ consistsOf"&gt;         &lt;artifact           localName="{sub_ implementationArtifactType}"           upRef="inBusinessService"           downRef="service"&gt;         &lt;artifact&gt;       &lt;/artifact&gt;     &lt;/artifact&gt;   &lt;/hierachical&gt; &lt;/configuration&gt; </pre>
<p>Included Artifacts</p>	<p>Search-configuration.xml file do not contain:</p> <pre> &lt;artifact   localName="businessServiceArtifact"   upRef="r_partOf" downRef="r_ consistsOf"&gt; </pre>

**Note:** An included artifact that is extended from “hpsoaAppComponentArtifact” artifact type will not have a parent artifact.

## Searching the Catalog

HP Systinet Plug-In for Visual Studio includes a Catalog Search feature, enabling you to explore the content of HP Systinet.

**To search the Catalog:**



1. Do one of the following:

- From the menu, select **Edit>Find and Replace>Find Systinet Artifacts**.
- Use keyboard shortcut **Alt+Shift+F**.

The Search Dialog opens.

2. In the search section, select an artifact type to search, and if required, a specific lifecycle stage and domain.

The Properties section refreshes showing specific details depending on the artifact type.

Adding web references uses WSDL definitions. To find the WSDL you need, search for SOAP Services or Operations, as these artifacts contain lifecycle and contract information. The functionality for adding web references is available on search results for SOAP Services and Operations and utilises the WSDLs associated with them.

3. Enter your search parameters.

For parameter details, see the "SDM Documentation" in HP Systinet.

4. To display the parent artifacts search result artifacts depend on, select **Show Parent Artifacts**

Selecting **Show Parent Artifacts** may reduce the speed of the search.

5. Click **Search** to execute the search.

Systinet Plug-In for Visual Studio displays the results of the search in the Catalog Search Result view. For details, see ["Search Results" on page 8](#).

## Artifact Detail View

Enables you to view the details for a particular artifact in its own detail view. The content of this view is similar to the Artifact Detail view in the Tools tab in HP Systinet.

The artifact details vary depending on the artifact type and your customization and configuration.

The Artifact Detail view contains the following segments depending on the artifact type:

- **General**

Displays a description, the owner of the artifact, and a URL to the REST representation of the artifact.

- **Details**

Displays a set of properties for the artifact. These properties vary depending on the artifact type.

- **Data**

Displays a link to the attached data in the Catalog for artifacts with attached data content. Click the link to view the content of the attached data.

- **Related Catalog Artifacts**

Displays the set of related artifacts, indicating the type of relationship, the related artifact, and the direction of the relationship.

Double-click an artifact name to open its detail view.

### **Disable the Systinet Details view**

Open Systinet Details under Visual Studio view is enabled by default. However, user could disable it by change the configuration in **search-configuration.xml** file.

To disable details view:

1. Open **search-configuration.xml** with a text editor.
2. Change <details\_view enabled="**false**">.
3. Save search-configuration.xml.
4. Restart **Visual Studio** for re-loading the search-configuration.

After disabling the details view, whenever user clicks on artifact, open in **Systinet** browser instead of open details page.

## Viewing Artifacts in HP Systinet

Systinet Plug-In for Visual Studio enables you to directly open the Artifact Details page in the HP Systinet user interface.

### **To View Artifact Details in HP Systinet:**

- Do one of the following:
  - In the Solution Explorer view, open the context menu for the Catalog artifact you want to view in HP Systinet, and select **HP Systinet>Open in HP Systinet**.
  - In the Synchronization view, open the context menu for the Catalog artifact you want to view in HP Systinet, and select **Open in HP Systinet**.

A HP Systinet view opens showing the Artifact Details page for the selected artifact.

You may need to log in using your HP Systinet credentials.

For more details about the Artifact Details page, see the "Artifact Details Page" section in the HP Systinet User Guide.

## Using HP Systinet Navigator

HP Systinet includes a Graphical Navigator which provides a visual representation of the content of the Catalog. Instead of focusing on the details of single artifacts, it helps to understand the structure and dependencies of applications, services, and processes in your Catalog. As its name suggests, it is not only an alternative view but also a navigator that enables the exploration, browsing, and traversing of your Catalog content in a graphical way.

Systinet Plug-In for Visual Studio enables you to view Catalog content using the Navigator feature of HP Systinet.

### To view Catalog content in Navigator:

- Do one of the following:
  - In the Solution Explorer view, open the context menu for the Catalog artifact you want to view in Navigator, and select **HP Systinet>View Graphical Navigator** or **HP Systinet>View Impact Analysis**.
  - In the Search Results view, open the context menu for the Catalog artifact you want to view in Navigator, and select **View Graphical Navigator** or **View Impact Analysis**.

A HP Systinet view opens in the Navigator showing the graph for the selected artifact. If you selected **View Impact Analysis** the graph highlights the related artifacts that have a dependency on the selected artifact and could be affected by a change to that artifact.

You may need to log in using your HP Systinet credentials.

For more details about the Navigator and its use, see the "Catalog Visualization" chapter in the HP Systinet User Guide.

## Chapter 5: Modifying Resources

Systinet Plug-In for Visual Studio enables you to download resources from HP Systinet, modify them, and then upload them back to HP Systinet.

These features are described in the following sections:

- ["Downloading HP Systinet Resources " below](#)  
Download service definitions from HP Systinet.
- ["Uploading HP Systinet Resources " on the next page](#)  
Upload service definitions to HP Systinet.
- ["Synchronizing Resources " on page 18](#)  
Synchronize local resources with the latest HP Systinet revisions.
- ["Deleting HP Systinet Resources " on page 19](#)  
Delete HP Systinet resources.

### Downloading HP Systinet Resources

Systinet Plug-In for Visual Studio enables you to download the service definitions associated with artifacts from HP Systinet.

Systinet Plug-In for Visual Studio supports download for the following file types:

- BPEL
- DTD
- SCA
- Swagger
- WADL
- WSDL
- XSD

**To download service definitions from HP Systinet:**

1. Perform a Catalog search to locate the service you want to download the definitions for.

For details, see ["Searching the Catalog" on page 11](#).

2. In the Catalog Search Results view, right-click a search result, and select **Download from Server**.

The Download Document from HP Systinet dialog opens.

3. In the Download Document from HP Systinet dialog:

Select **Resolve Dependencies** to resolve any dependencies in the service definition files and download all referenced files as well.

Select **Open Resource after Downloading** to open an editor view of the downloaded resource.

Select a location in your project to store the downloaded resources, and then click **Finish**.

Systinet Plug-In for Visual Studio downloads the relevant service definition files and copies them to the selected location. The structure of the HP Systinet publishing location space is preserved.

For details about the Publishing Location space, see "Publishing Locations Workspace" in the *HP Systinet Developer Guide*.

## Uploading HP Systinet Resources

Systinet Plug-In for Visual Studio enables you to upload service definition documents directly to HP Systinet.

Systinet Plug-In for Visual Studio supports upload for the following file types:

- BPEL
- DTD
- SCA
- Swagger
- WADL
- WSDL
- XSD

Systinet Plug-In for Visual Studio auto-detects referenced documents for upload in SCA documents by QName according to the following rules:

From	To	Element Tag
SCA Composite	SCA Composite	<include name="{QNAME}" />
SCA Composite	SCA Composite	<implementation.composite name="{QNAME}" />
SCA Composite	SCA Constraining Type	<composite constrainingType="{QNAME}" />
SCA Composite	SCA Constraining Type	<component constrainingType="{QNAME}" />
SCA Composite	BPEL File	<implementation.bpel process="{QNAME}"/>
SCA Component Type	SCA Constraining Type	<componentType constrainingType="{QNAME}" />
SCA Contribution	SCA Composite	<deployable composite="{QNAME}" />

Systinet Plug-In for Visual Studio also resolves referenced local WSDL files in SCA files for upload.

**Procedure 2. To upload service definitions to HP Systinet:**

1. In the Solution Explorer, right-click the resource or folder of resources you want to upload, and select **HP Systinet > Upload to Server** to open the Upload Documents dialog box.

This option is only available if you have appropriate permissions in HP Systinet.

2. Select resources to upload, and then click **Next**.
3. Select the publishing location folder, or input a new one, and then click **Next**.
4. Select from the following **Advanced Options**:

Parameter	Definition
BPEL Decomposition	Select whether to create Business Process artifacts defined by a BPEL document.

Parameter	Definition
WSDL Decomposition	<p>Select a WSDL processing level from the following options:</p> <ul style="list-style-type: none"> <li>■ <b>Services</b></li> </ul> <p>Process any WSDLs, create all defined content and create business services to associate with any newly created implementations.</p> <ul style="list-style-type: none"> <li>■ <b>Implementations</b></li> </ul> <p>Process any WSDLs and create all defined content. Business services are not created.</p> <ul style="list-style-type: none"> <li>■ <b>None</b></li> </ul> <p>Publish any WSDLs as artifacts with attached data content. The WSDL files are not processed.</p>
Service Type	Select a service categorization for created service artifacts.
Remove Unsynchronized	If a WSDL is republished the artifacts it references may change and previously created artifacts may no longer be required. Select artifact types to remove the relationships with these obsolete referenced artifacts.

Click **Next**.

HP Systinet processes the content for upload and returns an Upload Overview to Systinet Plug-In for Visual Studio.

If your version of HP Systinet does not support the new advanced options, Systinet Plug-In offers a reduced set of the listed options.

5. Review the overview and click **Finish** to complete the upload and create the relevant artifacts, or **Cancel** to abort the upload.

The artifacts upload to the domain selected in preferences.

## Synchronizing Resources

After downloading resources from HP Systinet, you may want to synchronize them with HP Systinet.

### To synchronize a local resource with HP Systinet:

1. In the Solution Explorer, right-click the resource you want to synchronize and select **HP Systinet>Synchronize with Server**.

The Synchronization view opens showing any files that differ.

2. Optionally, right-click an item that differs from the server version, and select **Update** to download the latest version from HP Systinet.

## Deleting HP Systinet Resources

Systinet Plug-In for Visual Studio enables you to delete resources stored in the HP Systinet Catalog.

### To delete HP Systinet resources:

1. In the Solution Explorer, right-click the resource you want to delete, and select **HP Systinet>Delete from Server**.

The HP Systinet UI opens requesting authentication.

2. Enter your credentials.

The detail view of the artifact you want to delete opens.

3. Use HP Systinet functionality to delete the artifact. For details, see the *HP Systinet User Guide*.



## Chapter 6: Validating Resources

Systinet Plug-In for Visual Studio enables you to validate local resources against policies.

This chapter contains the following sections:

- ["Setting Up Validation " below](#)

Explains the process of importing and updating policies from the Policy Manager.

- ["Ad Hoc Validation " on page 22](#)

Explains how to run unscheduled validation and produce reports.

### Setting Up Validation

You can add or delete policies, and update your local policies against versions from an HP Systinet server.

Validation is introduced in the following sections:

- ["Setting Up Policies " below](#)
- ["Updating Policies " on the next page](#)
- ["Removing Policies " on the next page](#)

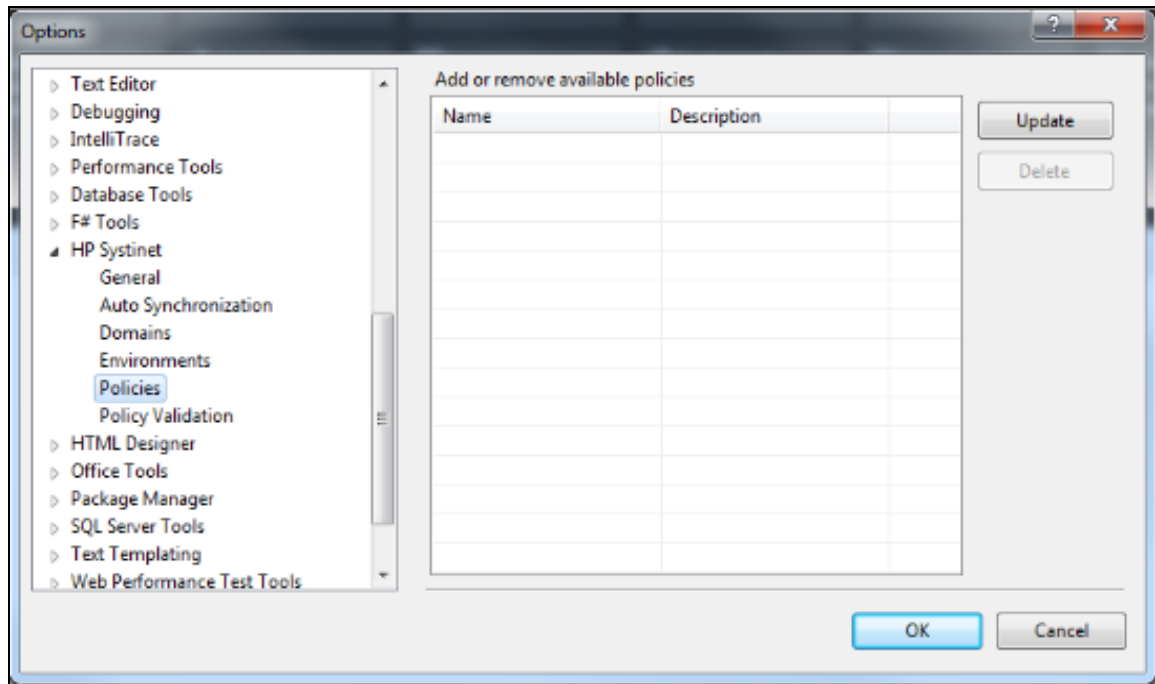
### Setting Up Policies

You can add, delete, or update policies in the Systinet Plug-In for Visual Studio Policies page.

**To set up policies:**

1. From the menu, select **Tools>Options** to open the Options dialog box.
2. In the tree view of the Preferences dialog box, select **HP Systinet>Policies** to open the Policies page, as shown below:

**Policies Page**



In the Policies page, do any of the following:

- Update local policies. For details, see "[Updating Policies](#) " below.
- Remove a policy. For details, see "[Removing Policies](#) " below.

## Updating Policies

You can use Systinet Plug-In for Eclipse to update local policies against policies on an HP Systinet server.

### To update policies:

1. Make sure the HP Systinet server is running.
2. Click **Update** to open the Select Policy for Update dialog box.
3. Select the policies to update and click Finish.

The local version of the selected policies update to reflect the version on the HP Systinet server.

## Removing Policies

### To remove a policy:

- Highlight the policy in the Policies page, and then click **Delete**.

## Ad Hoc Validation

Ad hoc validation is the unscheduled validation of documents against policies.

Ad hoc validation is described in the following sections:

- ["Running Ad Hoc Validation " below](#)
- ["Viewing Ad Hoc Validation Results " below](#)
- ["Revalidating a Document " on page 24](#)
- ["Exporting Reports " on page 24](#)
- ["Setting Report Style " on page 25](#)

## Running Ad Hoc Validation

**To run ad hoc validation on resources:**

1. Open the context menu for a document in the Solution Explorer, and select **Check Policy Compliance**.  
  
The Validate More Policies dialog box opens.
2. To add more documents to validate, do one of the following:
  - Click **Add Resource** to browse and select documents from your Visual Studio project.
  - Click **Add External File** to browse and select documents from your file system.
  - Click **Add External Folder** to browse and select all documents in a folder in your file system.
  - Click **Add URL** to enter the endpoint URL of a remote document.
3. In the Technical Policies field, click **Add** to select from a list of available policies to use in the validation.
4. Click **Run**.

The validation runs and the result is shown in the Validation Result tab.

For details, see ["Viewing Ad Hoc Validation Results " below](#).

## Viewing Ad Hoc Validation Results

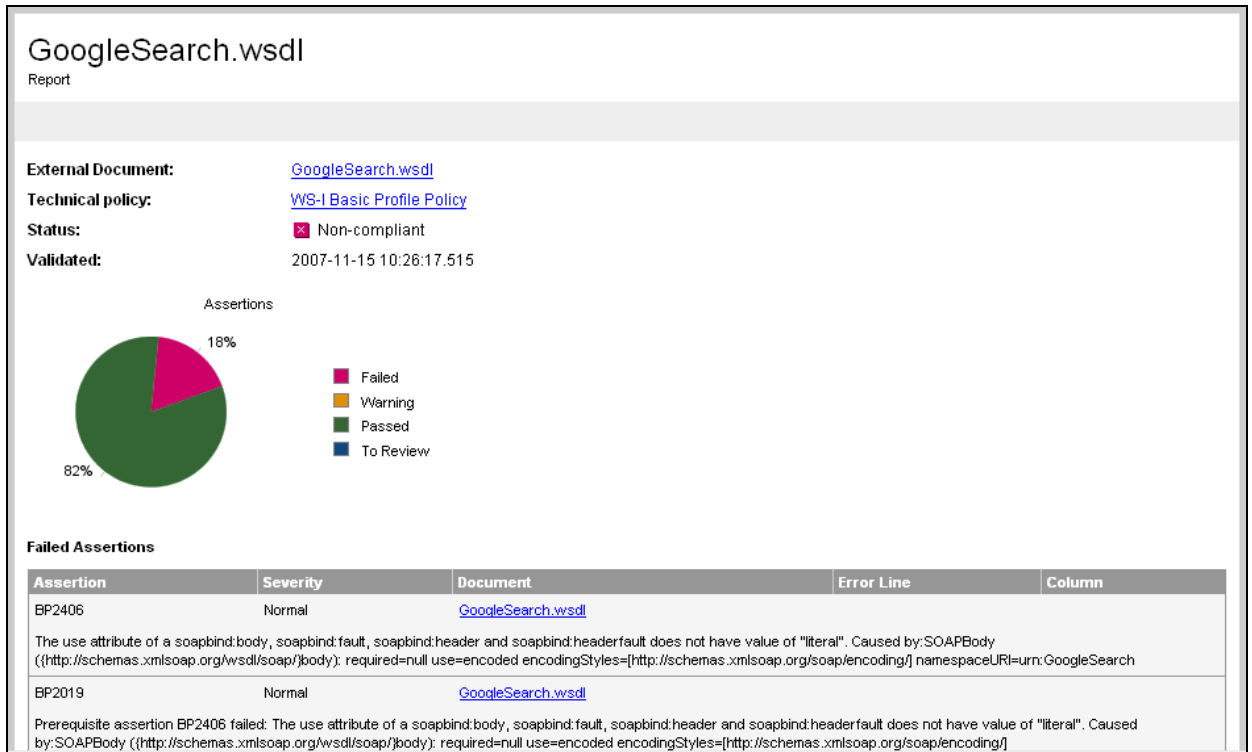
When validation completes, the Validation Result view displays the results. For each result, you can view a detailed HTML report. You can also view a summary report for all validation results.

The default report style is similar to that of Policy Manager validation reports. For information about setting report styles, see ["Setting Report Style " on page 25.](#)

**To view a validation report:**

- In the Validation Result tab, open the context menu for an item, and select **View Detail**.

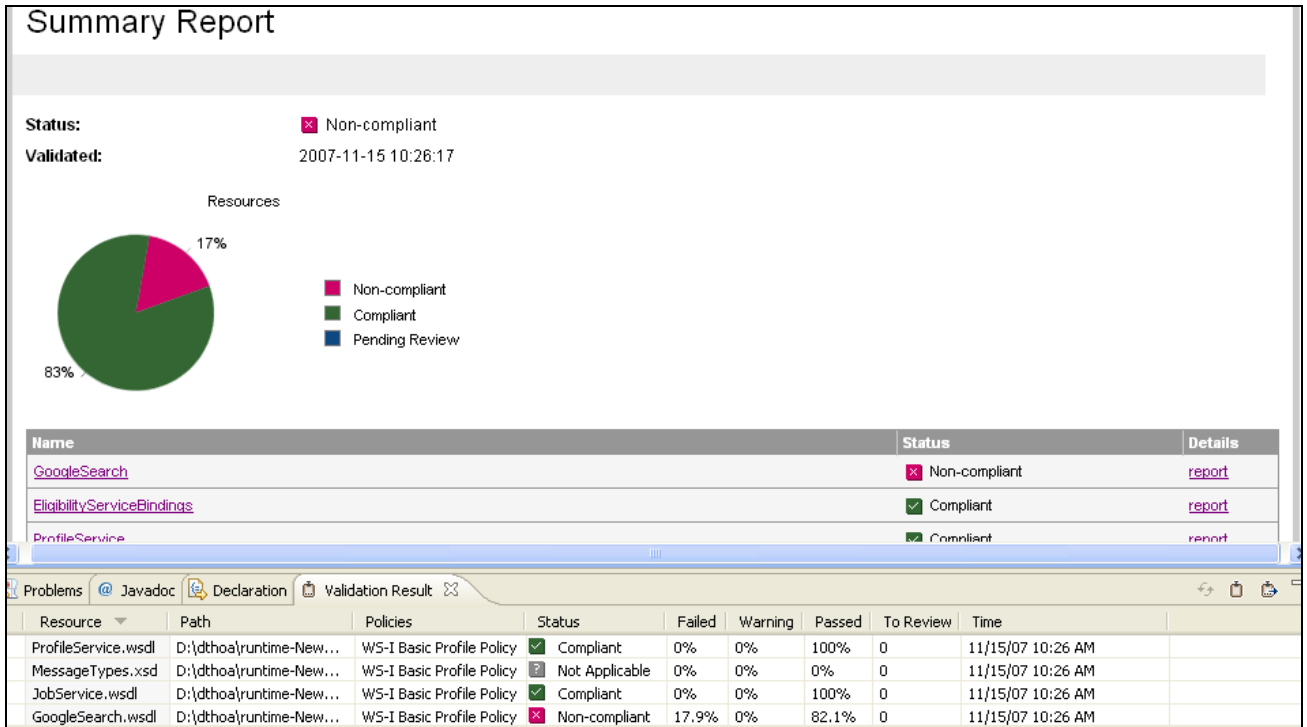
**Validation Report**



If you have more than one validation result, you can view a summary report of all the validation results.

To view a summary report, in the Validation Result tab, select the items to summarize and open the context menu, select **Create Summary Report**.

The Summary Report view opens, as shown below:



To view the detailed report of a document in the summary, click the **report** hyper link in the Details column.

## Revalidating a Document

If recent changes have been made to a document, you can revalidate that document.

To revalidate a document:

- In the Validation Result tab, open the context menu for an item, and then select **Revalidate**.

The document is revalidated against the selected policies.

## Exporting Reports

You can export a validation report to your file system.

To export a validation report:

1. In the Validation Result tab, select the items to export, open the context menu and select **Export Reports**.
2. Browse for the location to which you want to save the report, and click **OK**.

Both detail and summary reports are saved.

## Setting Report Style

Included with Systinet Plug-In for Eclipse is the Policy Manager detail report stylesheet. If you want to change the stylesheet, you can select from a pure text style or XML format.

### To change the style of ad hoc validation reports:

1. From the menu, select **Tools>Options**.

The Options dialog box opens.

2. In the tree view of the Options dialog box, expand **HP Systinet>Policy Validation**.

The Policy Validation page opens.

3. In the Validation Result Format pane, select one of the following options:

- **Text Format**, then go to Step 5.

- **XML Format**, then go to Step 4.

4. In the Stylesheet pane, select one of the following options:

- **Associate with default stylesheet**.

- **Custom stylesheet**, then browse for the stylesheet you need.

5. Click **OK** to produce the report in the selected format.

## Chapter 7: Adding Web References

Systinet Plug-In for Visual Studio integrates with existing Visual Studio functionality, enabling you to create a web reference from resources in the Catalog.

To add a web reference:

1. Perform a Catalog search to locate the resource you want to use for web reference addition.

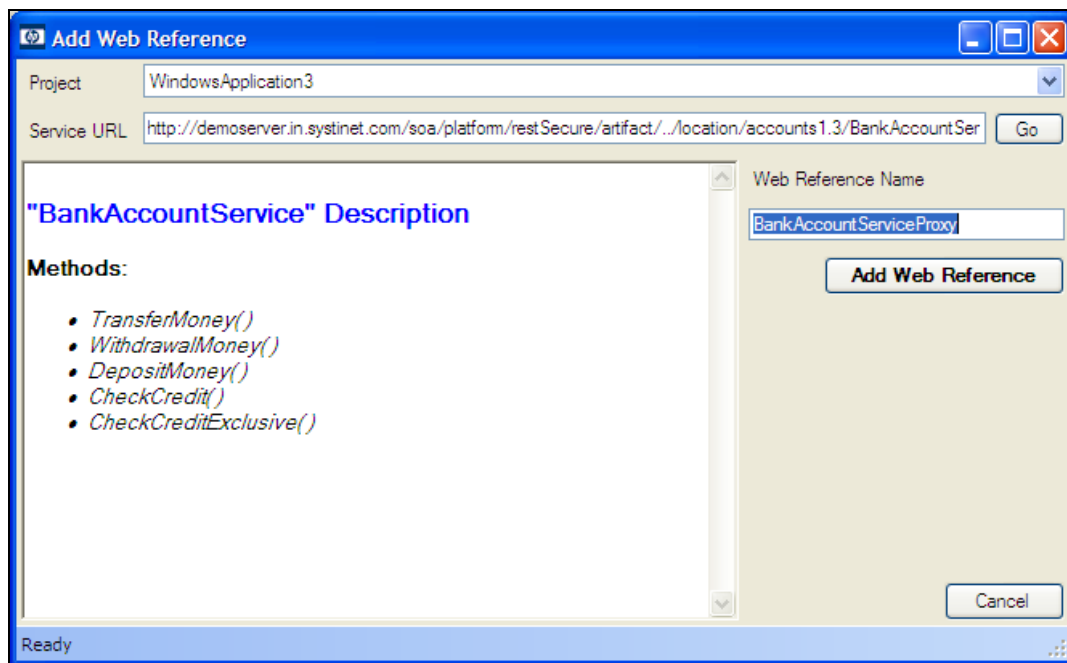
For details, see ["Searching the Catalog" on page 11](#).

For consumer use cases search for *Consumable* services at the *Production* lifecycle stage.

2. In the Catalog Search Results view, right-click the Operation or SOAP Service to use for web reference addition, and select **Add Web Reference**.

Adding a web reference against a SOAP Service or Operation uses the WSDL associated with it.

The Add Web Reference dialog opens.



3. Use the Add Web Reference dialog to select your web reference settings.

Use the Object Browser to examine the web reference.

# Chapter 8: Requesting Consumption of HP Systinet Artifacts

HP Systinet enables users to request the consumption of an artifact in order to use it subject to terms set by the provider.

This feature is only available for artifacts that are marked as consumable in HP Systinet.

Systinet Plug-In for Visual Studio enables you to request consumption directly.

## To Request Consumption of HP Systinet Artifacts:

- Do one of the following:
  - In the Search Results view, open the context menu for the artifact you want to consume, and select **Request Contract**.
  - In the Artifact Detail view, in the Request Server section, select **Request Contract**.

An HP Systinet view opens in the Select Consumer Artifact page of the Request Consumption wizard. For details about requesting consumption of artifacts, see "How to Request Consumption of an Artifact" in the *HP Systinet User Guide*.

You may need to log in using your HP Systinet credentials.

For more details about Contracts, see "Contract Management" in the *HP Systinet User Guide*.



## Chapter 9: Requesting Lifecycle Approval

HP Systinet uses Lifecycle Processes to govern artifacts. An important stage in lifecycle is the approval of particular lifecycle stages.

Systinet Plug-In for Visual Studio enables you to request lifecycle approval directly.

### To Request Approval of HP Systinet Artifacts:

1. Do one of the following:
  - In the Solution Explorer view, open the context menu for the Catalog artifact you want to request approval for, and select **HP Systinet>Request Approval**.
  - In the Search Results view, open the context menu for the artifact you want to request approval for, and select **Request Approval**.
  - In the Artifact Detail view, in the Request Server section, select **Request Approval**.

The Request Approval dialog box opens.

2. Input a description, and click **OK** to submit your stage approval request. For more details about requesting approval of artifacts, see "How to Request Approval" in the *HP Systinet User Guide*.

For more details about Lifecycle, see "Lifecycle Governance" in the *HP Systinet User Guide*.

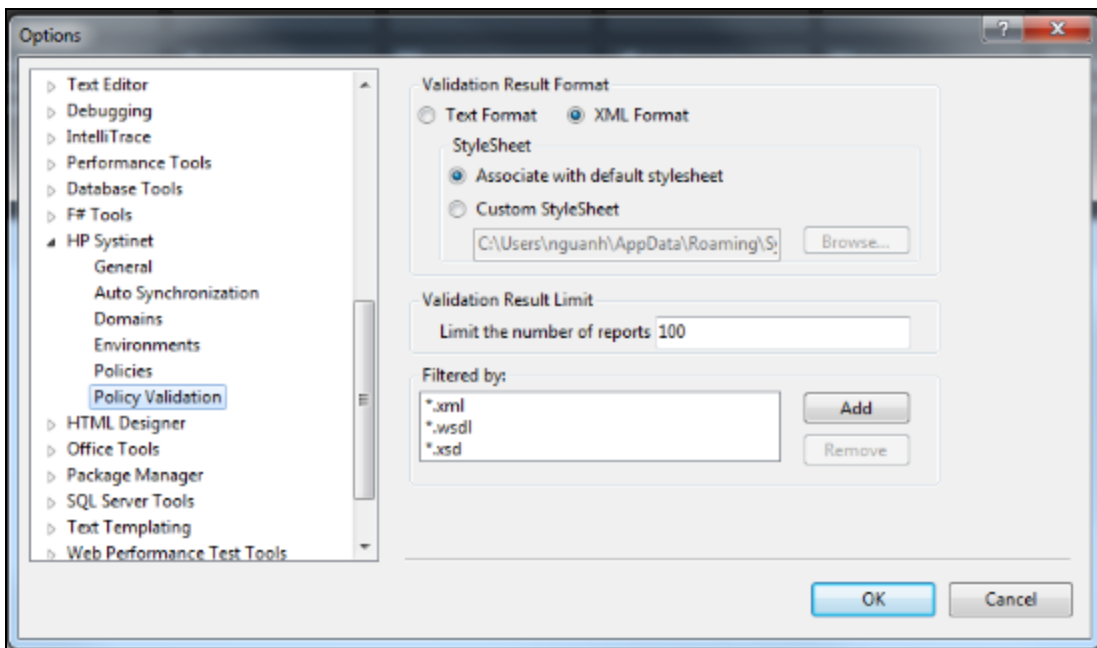
## Appendix A: Dialog Boxes

Each Systinet Plug-In for Visual Studio input dialog is described in the following sections:

- ["Validate Policies Dialog" on the next page](#) Run ad hoc validation on several documents and policies at the same time.
- ["Policy Validation Options" below](#) Set preferences for your report style.

### Policy Validation Options

Set preferences for your report style:

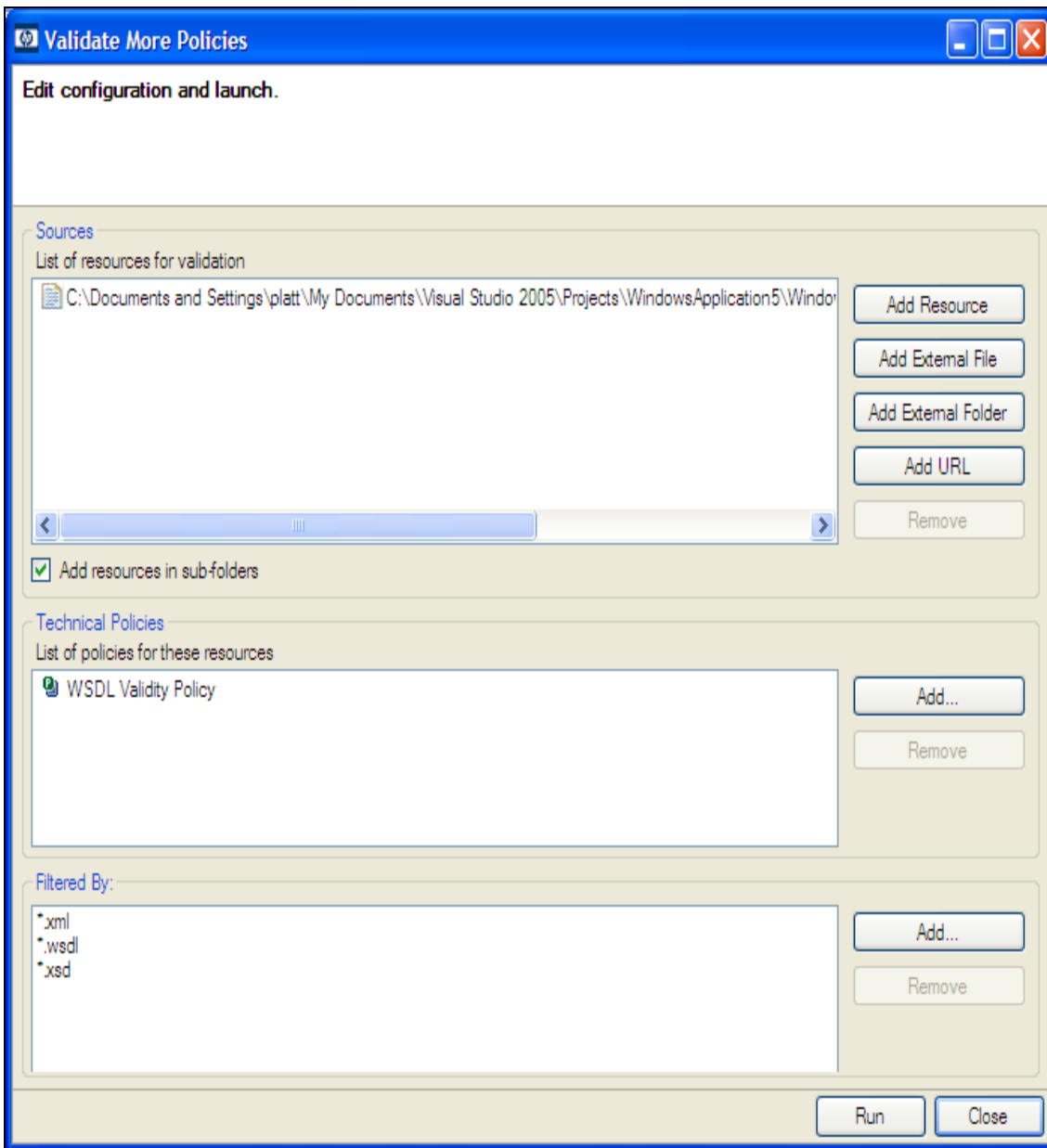


Parameter	Definition
Validation Result Format	Choose whether you want the validation results to be in Text or XML format.
Stylesheet	Choose whether to use the default or a custom stylesheet.
Browse	Browse for and select a custom stylesheet.
Validation Result Limit	Specify the maximum number of returned results.
Filtered By	Filter available stylesheets by file type.
Add	Add a specific file type.

Parameter	Definition
Remove	Remove a previously selected file type.
OK	Save your preferences.
Cancel	Exit without saving your preferences.

## Validate Policies Dialog

Run ad hoc validation on several documents and policies at the same time:



Parameter	Definition
Sources	The list of resources you want to use for validation.
Add Resource	Browse and select documents from your Visual Studio project.
Add External File	Browse and select documents from your file system.
Add External Folder	Browse and select all documents in a folder in your file system.
Add URL	Enter an endpoint URL of a remote document.
Remove	Remove previously selected documents.
Technical Policies	The list of technical policies associated with the resources.
Add	Select from a list of available policies to use in the validation.
Remove	Remove previously selected policies.
Filtered By	Filter available documents or policies by file type.
Add	Add a specific file type.
Remove	Remove a previously selected file type.
Run	Start validation.
Close	Close the dialog box without launching validation.

## Appendix B: Preferences

Systinet Plug-In for Visual Studio contains a set of preferences determining its interaction with HP Systinet. These settings are prompted for when required, but they can also be changed from the Windows>Preferences menu.

These settings are described in the following sections:

- ["Setting the Server" on page 35](#)

Specify the installation of HP Systinet to integrate with.

- ["Setting the Domain" on the next page](#)

Specify the HP Systinet domain to work in.

- ["Setting the Environment" on page 34](#)

Specify the environment categorization to use when obtaining endpoints.

- ["Setting Synchronization" below](#)

Specify whether to automatically synchronize local resources with the equivalent resources in HP Systinet.

### Setting Synchronization

Systinet Plug-In enables you to download resources from HP Systinet. In addition, you can specify automatic synchronization between HP Systinet resources and their local equivalents in your IDE project.

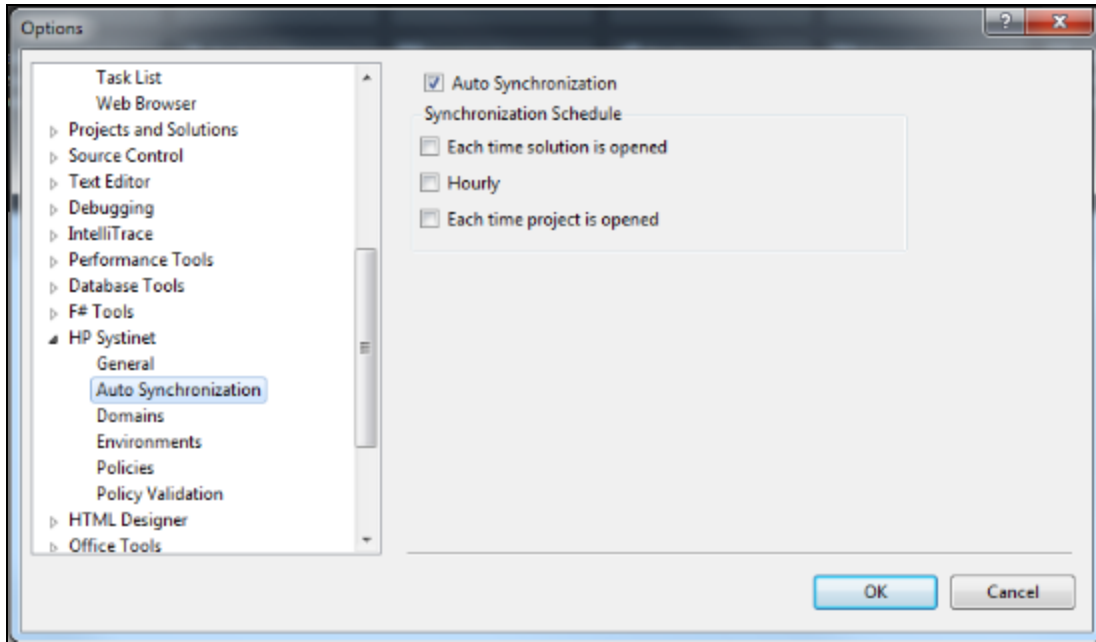
To set up automatic synchronization:

1. From the menu, select **Tools>Options**.

The Options dialog box opens.

2. In the tree view of the Preferences dialog box, select **HP Systinet>Auto Synchronization**.

The Auto Synchronization page opens as shown below:



3. To enable automatic synchronization, select **Auto Synchronization**, and select from the following synchronization options:

Auto Synchronization Option	Description
Each Time Platform is Started	Update local versions with newer versions from HP Systinet whenever the HP Systinet server starts.
Hourly	Update local versions with newer versions from HP Systinet every hour.
Each Time Project is Opened	Update local versions with newer versions from HP Systinet whenever a project is opened.

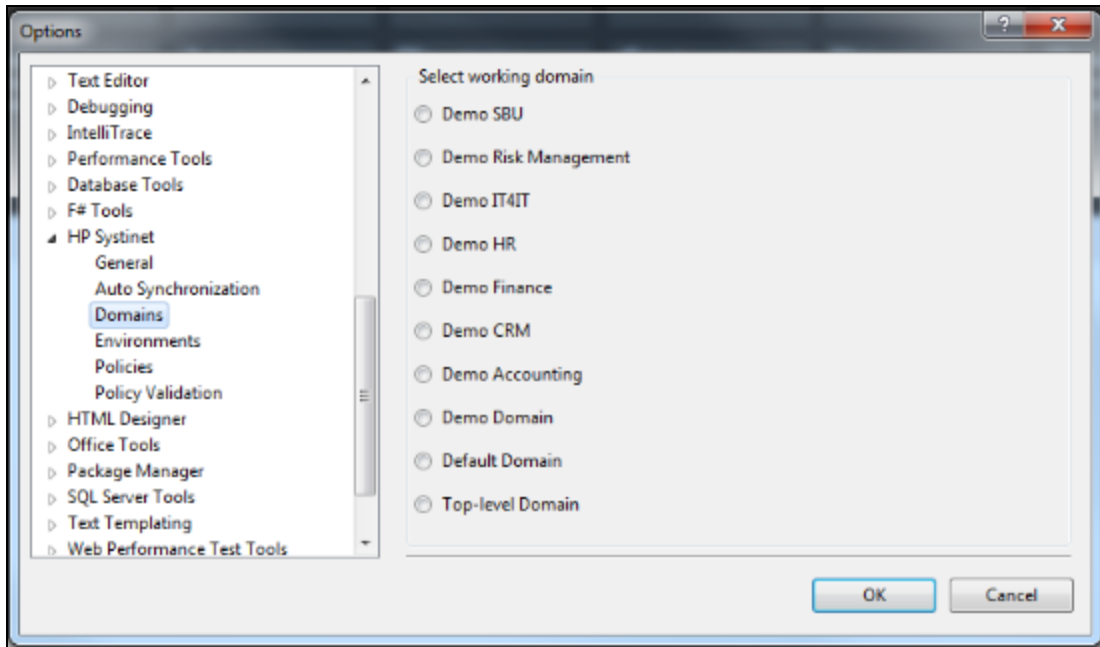
4. Click **OK**.

## Setting the Domain

The develop services in conjunction with HP Systinet you must select the domain that you are working in.

To set the HP Systinet domain:

1. From the menu, select **Tools>Options** to open the Options dialog box.
2. In the tree view of the Options dialog box, select **HP Systinet>Domains** to open the Select Working Domain page as shown below:



3. Select the domain to access and click **OK**.

## Setting the Environment

HP Systinet uses an Environment taxonomy to categorize endpoints enabling multiple endpoints for a single service without requiring modification of the WSDL definition.

This means that the WSDL itself does not define the environment specific endpoints that you may require for service development.

Systinet Plug-In contains an environment setting that allows you to define a default environment you are developing your services for in order to obtain the relevant endpoints associated with the service.

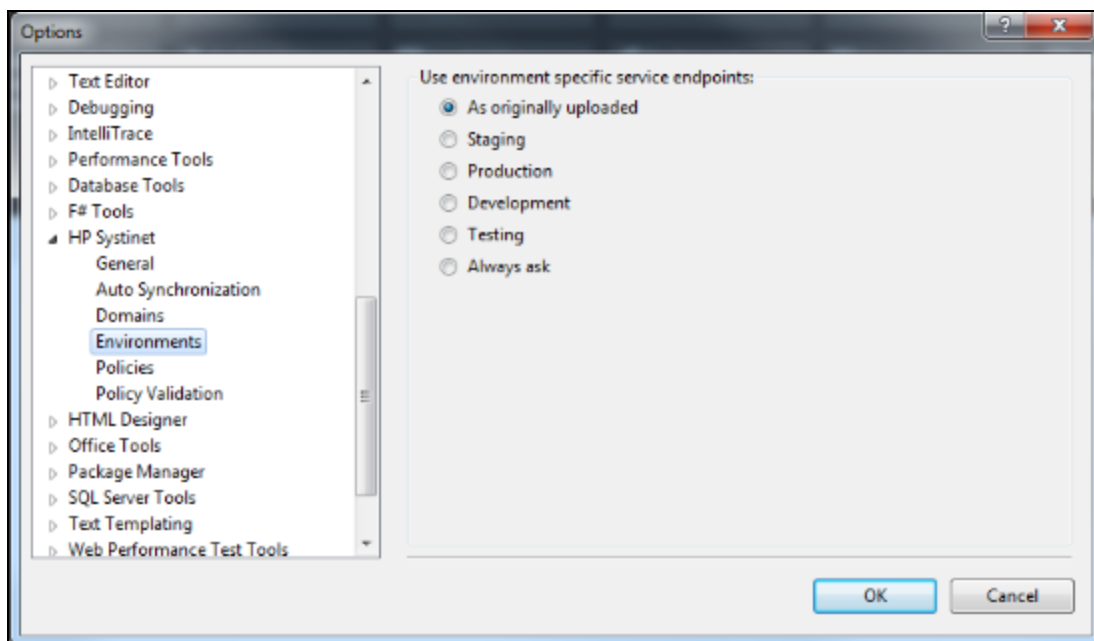
To set the default environment:

1. From the menu, select **Tools>Options**.

The Options dialog box opens.

2. In the tree view of the Options dialog box, select **HP Systinet>Environments**.

The Environments page opens as shown below:



3. Set the default environment from the following options:

Environment Option	Description
As originally uploaded .	Use the WSDL without any environment specific endpoints
Environment Categories	Use the endpoints for the service categorized as the selected environment. For example, Development or Testing.
Always Ask	Prompt for environment selection whenever it is required.

4. Click **OK**.

## Setting the Server

The develop services in conjunction with HP Systinet you must set the credentials for the server you are working with.

To set the HP Systinet server:

1. From the menu, select **Tools>Options**.

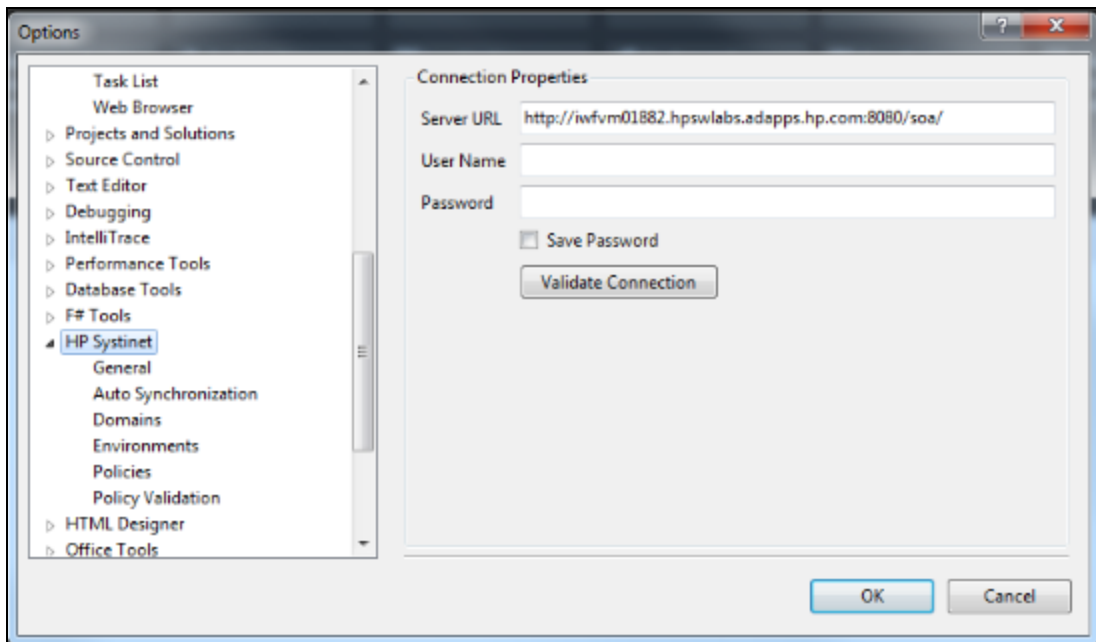
The Options dialog box opens.

2. In the tree view of the Options dialog box, select **HP Systinet**.

**Tip:** If this option is not visible, select **Show all settings**.



3. The connection properties page opens as shown below:



4. Set the connection details for the **HP Systinet** server. Optionally, save these credentials or use **Validate Connection** to test the connection.
5. Click **OK**.

## Appendix C: Configuring Plugin

Systinet Plug-In for Visual Studio uses a configuration file at the following location in the HP Systinet Catalog:

```
http://host:port/soa/platform/restSecure/location/hpsoa/client/search-configuration.xml
```

This file is a server specific configuration that all instances of Systinet Plug-In for Visual Studio access to determine the format and content of Catalog search for that server. HP Systinet contains a default configuration that you can use with Systinet Plug-In for Visual Studio.

If you use a custom SOA definition model then you can modify the configuration and upload it to the HP Systinet server.

Systinet Plug-In for Visual Studio contains a default configuration defined in the following file:

```
VSP_HOME/search-configuration.xml
```

**To change the Systinet Plug-In for Visual Studio configuration and upload it to HP Systinet:**

1. Create a working copy of `search-configuration.xml`.
2. Open `search-configuration.xml` with a text editor.
3. Edit `search-configuration.xml` to reflect your requirements.

For details, see the following sections:

- ["Configuring Search and Detail Parameters" on page 40](#)
  - ["Configuring Search Results" on page 41](#)
  - ["Configuring Artifact Hierarchies" on the next page](#)
  - ["Configuring Localization" on page 39](#)
4. In HP Systinet use the Upload Content feature in the Tools tab to store the configuration in the Catalog.

In the Upload Content page, specify the following location:

```
/hpsoa/client
```

For details, see "Uploading Service Infrastructure from Definition Documents" in the *HP Systinet User Guide*.

## Configuring Artifact Hierarchies

Service artifacts in HP Systinet form natural hierarchies. Catalog Search locates the artifacts matching your search criteria, and if requested, any related artifacts specified in the hierarchical structure defined in the configuration.

For example, the default hierarchy is defined as follows:

```
<hierarchical>
  <artifact localName="xmlSchemaArtifact"/>
  <artifact localName="wsdlArtifact"/>
  <artifact localName="swaggerArtifact"/>
  <artifact localName="wadlArtifact"/>
  <artifact localName="hpsoaBpelProcessArtifact"/>
  <artifact localName="hpsoaScaArtifact"/>
  <artifact localName="hpsoaProcessArtifact"/>
  <artifact localName="hpsoaApplicationArtifact">
    <artifact localName="businessServiceArtifact" upRef="r_partOf" downRef="r_
consistsOf">
      <artifact localName="webServiceArtifact" upRef="inBusinessService"
downRef="service">
        <artifact localName="hpsoaOperationArtifact" upRef="r_operationOf" downRef="r_
operation"/>
      </artifact>
      <artifact localName="restServiceArtifact" upRef="inBusinessService"
downRef="service">
        <artifact localName="httpRequestArtifact" upRef="composes" downRef="composedOf"/>
      </artifact>
    </artifact>
  </artifact>
</hierarchical>
```

You can add and modify hierarchies to match those relevant to your requirements.

**To configure the Catalog Search hierarchies:**

1. Open `search-configuration.xml` with a text editor.
2. Do any of the following:
  - Add a hierarchy by adding the top level `<artifact>` within the `<hierarchical>` segment, defined by its local name.
  - Add artifacts to hierarchies by adding `<artifact>` within a nested structure of an artifact hierarchy. Define the artifact with a local name and directional relationship properties.

**Tip:** You can locate the localNames and property names in your configuration at the following location:

`http://host:port/soa/systinet/platform/restBasic/Catalog/sdm/sdmConfig.xml`

3. Save `search-configuration.xml`.

**Tip:** If you define multiple hierarchies, the first hierarchy defined takes precedence in the event of a conflict.

## Configuring Localization

Localized text can be configured in Catalog search for artifact names in the `<artifact_mapping>` section of the configuration file.

For example, the application artifact is defined as follows in English, Spanish, and Vietnamese:

```
<artifact_mapping>
  <artifact_type localName="hpsoaApplicationArtifact">
    <custom_name value="Application"/>
    <custom_name locale="es" value="Aplicacion"/>
    <custom_name locale="vi" value="Hàng D&#7912;ng D&#7909;ng"/>
  </artifact_type>
  ...
</artifact_mapping>
```

### To configure the localized text in Catalog Search:

1. Open `search-configuration.xml` with a text editor.
2. Add a new mapping rule for localization to Catalog Search by adding an `<artifact_type>` segment using the localName of the artifact type.

Specify the text to be localized with a `<custom_name>` specifying the text to be localized when the artifact type is rendered.

Add location specific text for an artifact type by adding a `<custom_name>` to the artifact specifying the locale and the text to use in that location.

**Tip:** You can locate the localNames in your configuration at the following location:

`http://host:port/soa/systinet/platform/restBasic/Catalog/sdm/sdmConfig.xml`

3. Save `search-configuration.xml`.

## Configuring Search and Detail Parameters

The artifact types in Catalog Search and the property parameters displayed in Catalog Search and the Artifact Detail View are defined in the `<details_view>` section of the configuration file.

For example, the application artifact is defined as follows:

```
<details_view>
  <artifact_type localName="hpsoaApplicationArtifact">
    <invisible_properties>
      <property localName="lastRevision"/>
      <property localName="revision"/>
      <property localName="identifierBag"/>
      <property localName="artifactType"/>
      <property localName="categoryBag"/>
      <property localName="stakeholderEmail"/>
      <property localName="criticality"/>
    </invisible_properties>
  </artifact_type>
  ...
</details_view>
```

### To configure the Catalog Search:

1. Open `search-configuration.xml` with a text editor.
2. Do any of the following:
  - Add an artifact type to search by adding an `<artifact_type>` segment using the localName of the artifact type.
  - Remove properties from the search parameters and detail view by adding a `<property>` in the `<invisible_properties>` segment of an artifact, using the localName of the property.

**Tip:** You can locate the localNames in your configuration at the following location:

<http://host:port/soa/systinet/platform/restBasic/Catalog/sdm/sdmConfig.xml>

3. Save search-configuration.xml.

## Configuring Search Results

The property parameters displayed for artifacts in the Catalog Search Results view are defined in the <search\_result> section of the configuration file.

For example, the application artifact is defined as follows:

```
<search_result>
  <artifact_type localName="hpsoaApplicationArtifact">
    <visible_properties>
      <property localName="name"/>
      <property localName="version"/>
      <property localName="productionStage"/>
      <property localName="description"/>
    </visible_properties>
  </artifact_type>
  ...
</search_result>
```

### To configure the Catalog Search:

1. Open search-configuration.xml with a text editor.
2. Do any of the following:
  - Add an artifact type to search results by adding an <artifact\_type> segment using the localName of the artifact type.
  - Add properties to the results for an artifact type by adding a <property> in the <visible\_properties> segment of an artifact, using the localName of the property.

**Tip:** You can locate the localNames in your configuration at the following location:

<http://host:port/soa/systinet/platform/restBasic/Catalog/sdm/sdmConfig.xml>

3. Save search-configuration.xml.

## Send Documentation Feedback

If you have comments about this document, you can [contact the documentation team](#) by email. If an email client is configured on this system, click the link above and an email window opens with the following information in the subject line:

**Feedback on User Guide for Visual Studio (Systinet Plug-In for Visual Studio 10.01)**

Just add your feedback to the email and click send.

If no email client is available, copy the information above to a new message in a web mail client, and send your feedback to [docteam\\_systinet@hp.com](mailto:docteam_systinet@hp.com).

We appreciate your feedback!