



HP Network Automation Software

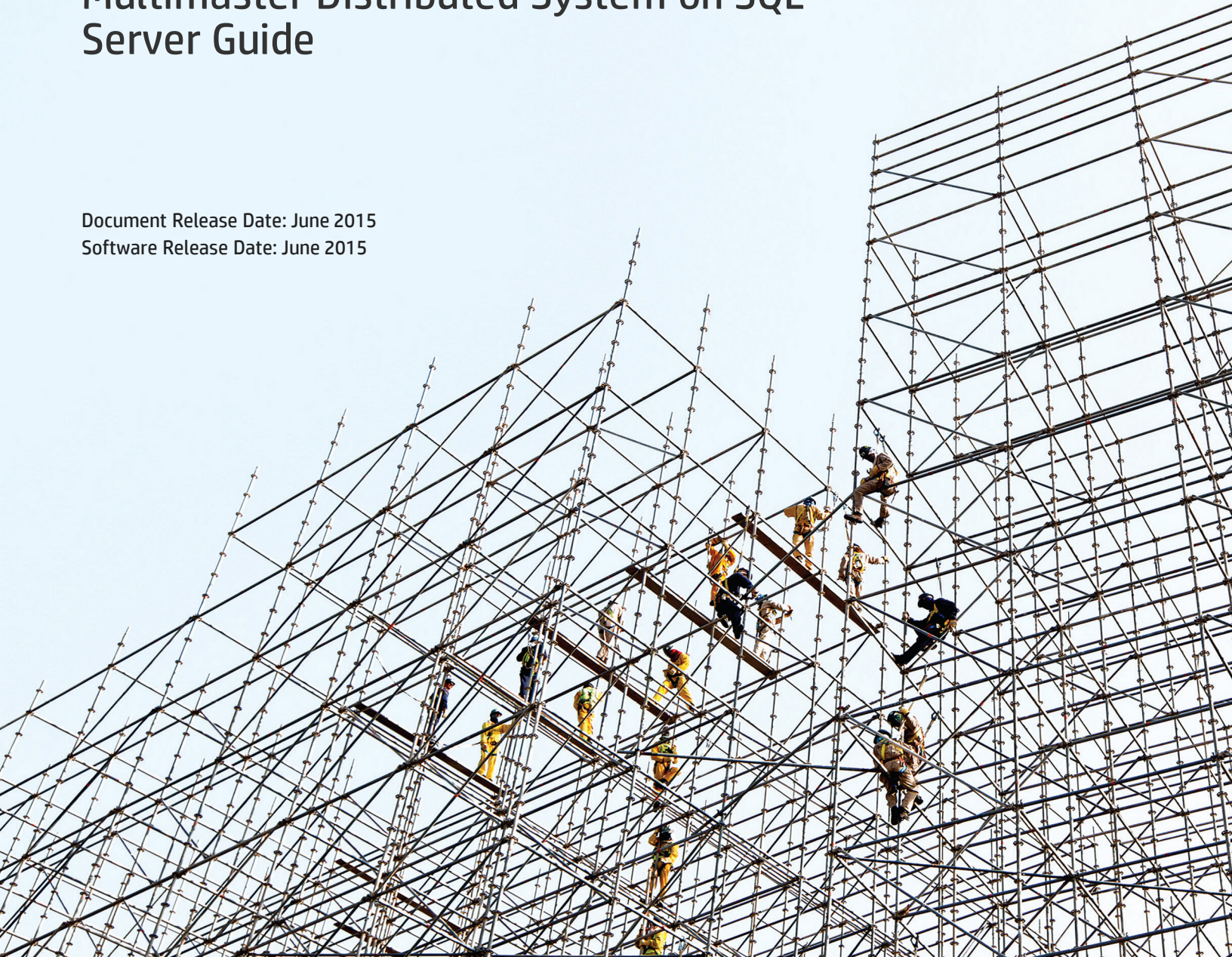
Software Version: 10.10

Windows® and Linux® operating systems

Multimaster Distributed System on SQL Server Guide

Document Release Date: June 2015

Software Release Date: June 2015



Legal Notices

Warranty

The only warranties for HP products and services are set forth in the express warranty statements accompanying such products and services. Nothing herein should be construed as constituting an additional warranty. HP shall not be liable for technical or editorial errors or omissions contained herein.

The information contained herein is subject to change without notice.

Restricted Rights Legend

Confidential computer software. Valid license from HP required for possession, use or copying. Consistent with FAR 12.211 and 12.212, Commercial Computer Software, Computer Software Documentation, and Technical Data for Commercial Items are licensed to the U.S. Government under vendor's standard commercial license.

Copyright Notice

© Copyright 2006–2015 Hewlett-Packard Development Company, L.P.

Trademark Notices

Adobe® is a trademark of Adobe Systems Incorporated.

AMD is a trademark of Advanced Micro Devices, Inc.

Intel® and Intel® Itanium® are trademarks of Intel Corporation in the U.S. and other countries.

Linux® is the registered trademark of Linus Torvalds in the U.S. and other countries.

Microsoft®, Windows®, and Windows Server® are U.S. registered trademarks of Microsoft Corporation.

Oracle and Java are registered trademarks of Oracle and/or its affiliates.

Red Hat® is a registered trademark of Red Hat, Inc. in the United States and other countries.

UNIX® is a registered trademark of The Open Group.

Oracle Technology — Notice of Restricted Rights

Programs delivered subject to the DOD FAR Supplement are 'commercial computer software' and use, duplication, and disclosure of the programs, including documentation, shall be subject to the licensing restrictions set forth in the applicable Oracle license agreement. Otherwise, programs delivered subject to the Federal Acquisition Regulations are 'restricted computer software' and use, duplication, and disclosure of the programs, including documentation, shall be subject to the restrictions in FAR 52.227-19, Commercial Computer Software-Restricted Rights (June 1987). Oracle America, Inc., 500 Oracle Parkway, Redwood City, CA 94065.

For the full Oracle license text, see the `license-agreements` directory in the NA product installer bundle.

Acknowledgements

This product includes software developed by the Apache Software Foundation (<http://www.apache.org/>).

Parts of this software Copyright © 2003–2008 Enterprise Distributed Technologies Ltd. All Rights Reserved. (<http://www.enterprisedt.com>)

Documentation Updates

The title page of this document contains the following identifying information:

- Software Version number, which indicates the software version.
- Document Release Date, which changes each time the document is updated.
- Software Release Date, which indicates the release date of this version of the software.

To check for recent updates or to verify that you are using the most recent edition of a document, go to:

<https://softwaresupport.hp.com>

This site requires that you register for an HP Passport and sign in. To register for an HP Passport ID, go to:

<https://hpp12.passport.hp.com/hppcf/createuser.do>

Or click the **the Register** link at the top of the HP Software Support page.

You will also receive updated or new editions if you subscribe to the appropriate product support service. Contact your HP sales representative for details.

Support

Visit the HP Software Support Online web site at: <https://softwaresupport.hp.com>

This web site provides contact information and details about the products, services, and support that HP Software offers.

HP Software online support provides customer self-solve capabilities. It provides a fast and efficient way to access interactive technical support tools needed to manage your business. As a valued support customer, you can benefit by using the support web site to:

- Search for knowledge documents of interest
- Submit and track support cases and enhancement requests
- Download software patches
- Manage support contracts
- Look up HP support contacts
- Review information about available services
- Enter into discussions with other software customers
- Research and register for software training

Most of the support areas require that you register as an HP Passport user and sign in. Many also require a support contract. To register for an HP Passport ID, go to:

<https://hpp12.passport.hp.com/hppcf/createuser.do>

To find more information about access levels, go to:

<https://softwaresupport.hp.com/web/softwaresupport/access-levels>

HP Software Solutions Now accesses the HPSW Solution and Integration Portal Web site. This site enables you to explore HP Product Solutions to meet your business needs, includes a full list of Integrations between HP Products, as well as a listing of ITIL Processes. The URL for this Web site is <http://h20230.www2.hp.com/sc/solutions/index.jsp>

Contents

Chapter 1: Getting Started	7
Terminology	7
Overview	8
Architecture	9
Is the Multimaster Distributed System Functionality Right for You?	10
NA Internal Monitoring: SQL Server Merge Replication	11
NA Internal Monitoring: Inter-NA Core Communication	12
Chapter 2: Installation, Setup, and Upgrading	13
System Requirements	13
Prepare for Initial Replication	13
Planning	15
Protocols, Databases, and Ports	16
Unpacking the Replication Script Installation Bundle	17
Creating a Two NA Core SQL Server Replication Environment	17
Recovering from a Failed Replication Configuration	24
Removing Replication	24
System Requirements	24
Deletion Steps	24
Upgrade the NA Mesh	25
Upgrading from NA 10.00 to NA 10.10	26
Chapter 3: System Administration	29
Getting Started	29
How NA Removes In-Memory and Database Information	29
Suspending Replication for Database Maintenance	29
NA Generated Events	30
Distributed System - Uniqueness Conflict	30
Distributed System - Time Synchronization Warning	31
Distributed System - RMI Error	31
Distributed System - Stopped Merge Agent Job	32
Distributed System - Data Synchronization Delay Warning	32
Using the NA Distributed System Pages	32
Distributed Monitor Results Page	32
Distributed Conflict List	33
View Distributed Conflict Page	34
Partition Reassignment Page	35

- List Cores Page 35
- Edit Core Page 36
- Device Password Rule Priority Reset Page 36
- Renew Configuration Options Page 37

- Chapter 4: Failover and Recovery 38**
 - Failover 38
 - Recovery 38
 - Loss of Network Connectivity 38
 - Loss of an NA Core Server 39
 - Loss of a Database Server 39

- Chapter 5: Troubleshooting 41**
 - RMI Errors in the NA Console 41
 - Removing In-Memory and Database Information 42

- Appendix A: Common Procedures 43**
 - Start, Stop, or Restart All NA Services 43
 - Disable All NA Services 44
 - Working with .rcx Files 45

- We appreciate your feedback! 47**

Chapter 1: Getting Started

Note: HP Network Automation Software (NA) running in a Multimaster Distributed System environment does not support the following features:

- The serial run mode that was added to many task types in NA 10.10
- The Deploy Hotfix task, new in NA 10.10
- Integration with HP Network Node Manager i Software (NNMi)

This chapter contains the following topics:

- ["Terminology" below](#)
- ["Overview" on the next page](#)
- ["Architecture" on page 9](#)
- ["Is the Multimaster Distributed System Functionality Right for You?" on page 10](#)
- ["NA Internal Monitoring: SQL Server Merge Replication" on page 11](#)
- ["NA Internal Monitoring: Inter-NA Core Communication" on page 12](#)

Terminology

The following terms are used throughout this guide:

- **NA Core** — A single NA Management Engine, associated services (Syslog and TFTP), and a single database. An NA Core can manage multiple Partitions.
- **Partition** — A set of devices with unique IP addresses. A Partition is managed by one (and only one) NA Core. Multiple Partitions can be managed by a single NA Core. For information about segmenting devices, see the *NA User Guide*.
- **NA Mesh** — Multiple NA Cores connected via multimaster replication.
- **Publisher** — A SQL Server database that defines what data is replicated and handles transferring changed data to and from the other databases in the NA Mesh.
- **Subscribers** — Databases in the NA Mesh that can send and receive replication data, but do not control the replication process.

Note: Both the Publisher and Subscribers will have the same data (subject only to replication time lags).

Overview

The NA Distributed System on Microsoft® SQL Server is a multimaster system where the data from each NA Core in an NA Mesh is accessible to all other NA Cores. This provides a comprehensive view of your data and allows for redundant data and failover in the event of a problem with a single NA Core. The multimaster features include both database data and certain file system data, such as software images and device driver packages. Keep in mind that software images and device driver packages are also replicated across the NA Mesh.

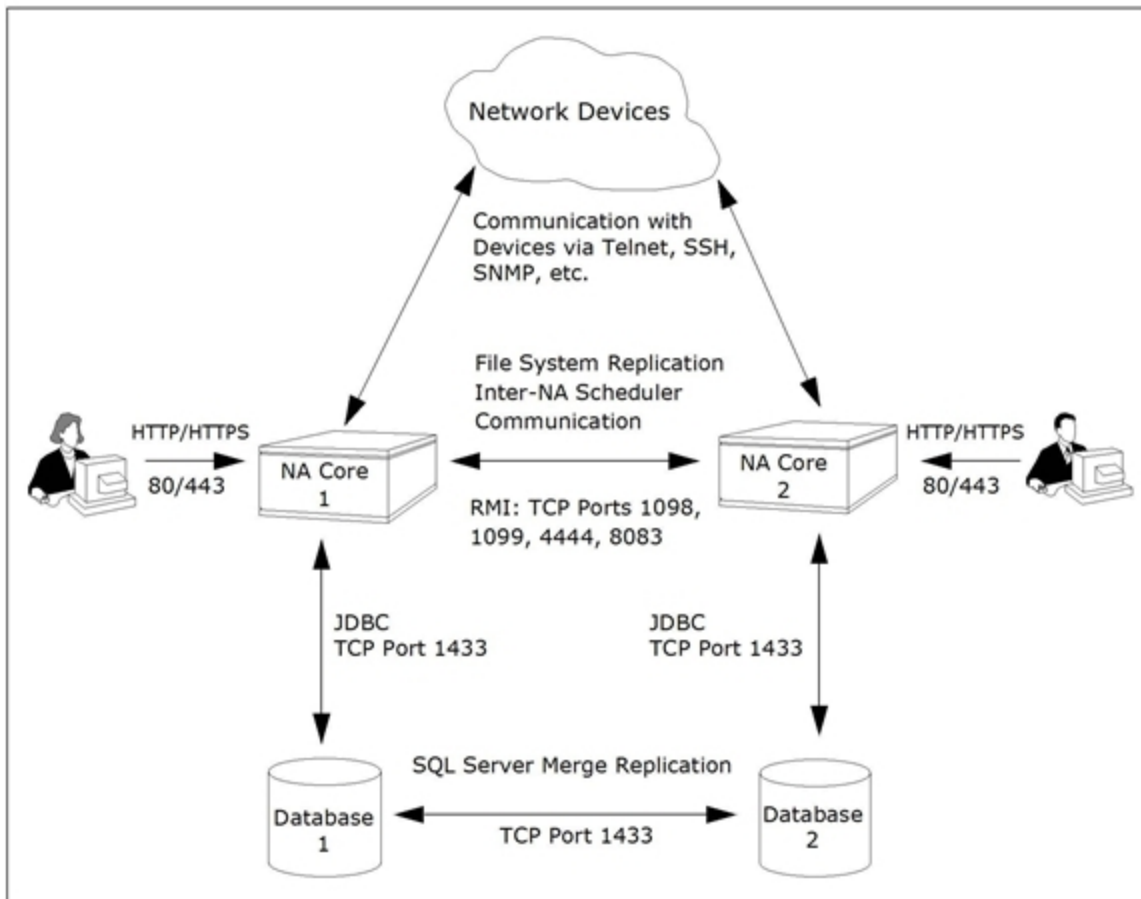
The following comprises the NA Distributed System:

- An NA Core and a partition:
 - A device is associated with a single partition.
 - A partition is associated with a single NA Core.
 - A task is associated with a specific NA Core.
- Merge replication on SQL Server:
 - Conflict resolution in the event that the same piece of data is modified almost simultaneously on two separate NA Cores. This conflict is typically resolved using the latest timestamp method.
 - Replication monitoring and conflict notification is built into NA. You can manage SQL Server replication conflicts and view merge agent job statuses from within the NA console.
 - The NA scheduler is multi-core aware. You can schedule group tasks containing devices that are associated with different NA Cores. The system will run these tasks on the correct NA Core. You do not have to schedule tasks on the appropriate NA Core.

System setup requires a thorough understanding of SQL Server and NA. Installation includes a number of steps that must be performed on the various servers. In addition, certain network changes may be necessary to allow connections between the servers. Once setup is complete, you will need to partition your devices into partitions to ensure proper NA Core access to devices. For information about segmenting devices, see the *NA User Guide*.

Architecture

The following figure shows a typical two-NA Core Multimaster Distributed System installation. The installation enables failover from one NA Core to another, while the remaining NA Core continues to manage all devices.



Keep in mind that some installations might have two separate network device collections that are inaccessible from the non-managing NA Core. These installations still provide data redundancy and scaling benefits, however.

Note that the database data transport uses standard SQL Server Merge Replication. For details on how replication works, see ["System Administration" on page 29](#).

The communication between the NA Cores is done using Java's Remote Method Invocation (RMI). RMI is used to ensure:

- Certain file system objects, such as software images and driver packages, are synchronized.
- NA tasks are scheduled and run on the correct NA Core.

NA does not replicate NA Core specific options, including:

- TFTP server information
- TACACS server information
- Scripting language settings
- Hop Box definitions
- Driver directory
- Install directory
- Local Gateway information
- SWIM proxy server
- Active Directory settings
- Scheduler (concurrent task limits)

Is the Multimaster Distributed System Functionality Right for You?

Horizontal Scalability is the ability to combine multiple NA cores with a single database so that they work as a single logical unit to improve the performance of the overall system. Any NA console user sees the same information on each of the NA cores. NA distributes device tasks across the NA cores according to the Horizontal Scalability topology. Users do not need to know which NA core accesses a particular device. NA Horizontal Scalability can be configured in different ways, depending on how you use your system and where bottlenecks are apt to occur. For installation and configuration information, see the *NA Horizontal Scalability Guide*.

Horizontal Scalability is the recommended deployment architecture for NA. It provides the following benefits:

- NA core failover of tasks in the case that one NA core stops working or becomes unreachable
- Optional disaster recovery configuration for minimizing the business disruption should a significant event affect an entire data center.

Additionally, you can use database clustering and NA satellites with Horizontal Scalability to increase the reliability and reach of the NA management system.

A Multimaster Distributed System is intended for environments with needs beyond what Horizontal Scalability provides. These situations can include:

- Your organization requires that all NA cores always be actively used for device management.
In this case, the network latency between the NA cores and the NA database servers must be low. Additionally, network down times must be infrequent and short.

- Users must access NA locally to avoid a higher latency WAN. These users manage local devices. In this case, the NA cores and database servers can be located in multiple data centers. Database replication is the only NA traffic on the WAN.

Tip: A Multimaster Distributed System deployment is most successful when there is a clear division of responsibility for device management. It is best when all NA work for a given device is initiated from only one NA core. NA work includes:

- Tasks
- Device modifications through the CLI, the NA console, or integrations with other products

Additionally, each database object (for example, a task) should be changed only on the NA core on which it was created.

This approach prevents conflicting changes in multiple NA databases and reduces the need for database conflict resolution.

NA Internal Monitoring: SQL Server Merge Replication

SQL Server Merge Replication can be configured to automatically handle certain types of conflicts. Where possible, NA uses SQL Server's built-in conflict handling software. For example, for most tables with *update/update* conflicts, NA installs the default SQL Server "latest timestamp wins" handler.

When it is not possible to use SQL Server's default handler, NA typically has additional code inside the application with logic that attempts to correct the error. If the error is uncorrected through that logic, NA alerts the NA administrator to the issue using NA's standard event notification emailing functionality. For information about configuring email notification, see the *NA User Guide*.

Note: When a second NA Core is used as a standby for failover and not for normal operation, you should not encounter *update/update* conflicts.

For detailed information on NA monitors, see ["Distributed Monitor Results Page" on page 32](#).

In addition, in SQL Server, NA monitors on a regular schedule the following on each NA Core for the database transport (i.e., replication):

- Merge agent status — If the check fails and the merge agent is found to have stopped, NA will attempt to restart it.
- Merge agent delays — If the merge agent synchronization falls behind, NA will alert the NA Administrator via email notification.
- Unrecoverable uniqueness conflicts — NA alerts the NA Administrator in the event of unrecoverable uniqueness conflicts. Typically, there is no way to automatically correct these types of issues.

Note: For information about configuring email notification, see the *NA User Guide*.

NA Internal Monitoring: Inter-NA Core Communication

In addition to replication monitoring, NA also monitors the following between each NA Core:

- RMI connectivity
- NA server timestamp differences

These monitors generate events during error conditions. The events can be emailed to the NA administrator or SQL Server DBA using a standard event rule in NA. For information about configuring email notification, see the *NA User Guide*. For detailed information about NA system events, see "[NA Generated Events](#)" on page 30.

Note: NA includes an example event rule that can be updated as necessary.

Chapter 2: Installation, Setup, and Upgrading

The chapter contains the following topics:

- ["System Requirements" below](#)
- ["Prepare for Initial Replication" below](#)
- ["Creating a Two NA Core SQL Server Replication Environment" on page 17](#)
- ["Removing Replication" on page 24](#)
- ["Upgrade the NA Mesh" on page 25](#)

For information about troubleshooting an NA Mesh, see ["Troubleshooting" on page 41](#).

System Requirements

For information about database version and server hardware requirements for the NA Multimaster Distributed System on SQL Server software, see the *NA Support Matrix*.

For SQL Server 2012 on Windows 2012, do the following:

- Change the privileges of the following administrator services to `.\Administrator`:
 - SQLSERVERAGENT
 - MSSQLSERVER
- In the Control Panel, modify the User Account Control to `users`.
- Change the System Administrator password to align with the password policy, if required.
- Make sure that these actions are performed on both the SQL servers.

Prepare for Initial Replication

To properly install the Distributed System software, you must first complete:

- Device partitioning planning across NA Cores
- Network configuration planning for connectivity between NA servers and devices. For example, what network connectivity is required to support failover for device access? The ability of an NA Mesh to failover for device access depends in part on proper network setup to ensure access to devices. In some cases, you might not want to have failover work for complete device access, but instead have it

ensure access to data while corrective action is taken to restore the network connectivity to the affected NA Core.

- Network configuration planning for connectivity and bandwidth between the different servers (NA and database) that comprise the NA Mesh and between the NA Management Engines and devices. The NA Cores in the NA Mesh will also need bandwidth between them equal to the bandwidth provided between a single NA server and its database in a single NA Core. For more information, see ["Architecture" on page 9](#).
- Network configuration planning for bandwidth usage by the NA Mesh. The bandwidth required between an NA Management Engine and its database depends on the size of the deployment, including the number of devices, average configuration size, and the number of concurrent users. The bandwidth available between the databases should be as large as between the NA Management Engine and the database. For a deployment of 14,000 devices with an average 10K configurations that change once a week, the bandwidth requirements could conservatively be on the order of 1Mb/s. Peak bandwidth requirements could be higher, depending on usage.
- SQL Server setup planning. Access to SQL Server Management Studio and the `sqlcmd` command line tool are needed for initial database creation.

Keep in mind that during replication setup, a snapshot of the initial database is transferred to each database in the NA Mesh. This requires ample time, disk space, and bandwidth.

You can estimate the time it will take to copy data from server to server given the bandwidth between the servers. You can also calculate the disk space requirements for the export (and subsequent import) operations by knowing the size of your database. If you want to export or import data from the same server as the database, the disk space requirement is twice the size of your database.

Note: Estimating time for the import and export operations could be difficult. You should allocate a lengthy time frame to complete this work. In addition, the NA core servers must be offline during the export and import steps. A sufficiently long maintenance window should be planned for.

You will also have to ensure:

- Time synchronization setup for the NA servers in the NA Mesh
- Users are instructed to login to their "closest" NA Core
- Access to a SQL Server DBA to support the NA Distributed System installation

To assist in planning, please note the following limitations and suggestions concerning the NA Distributed System:

- NA only supports two NA Cores in a Distributed System on SQL Server and can support no more than 6,500 nodes.
- NA currently does not support joining multiple existing NA installations into an NA Mesh. You can only create an NA Mesh from a single existing NA server, adding a new NA Core as appropriate. You can also create an NA Mesh from scratch.
- Users should not share logon accounts. Due to the replication system used to share data across NA Cores, two users should never use the same logon name to connect to two different NA Cores at the

same time. If they do so, the system will likely require additional work by the system administrator to ensure that the affected user’s profile is properly synchronized across the NA Mesh.

- NA currently assumes that all application and database servers in the Mesh share a single time zone.
- Future NA upgrades will take longer and require more downtime due to the need to both update the replication setup and to update all servers in the NA Mesh. NA does not support rolling upgrades where one part of the NA Mesh is running a version of NA while the rest of the NA Mesh is running a different version.
- The `SQLServerReplicationScript.sql` script updates the `RN_CORE` table. When the replication script runs, the `RN_CORE` table changes. There is no need for it to `UPDATE` and `INSERT` into the `RN_CORE` table on both Cores because replication is already running. The database changes will be pushed to the second database by using replication. The contents of the `RN_CORE` tables on both databases should match whatever is set up in the `SQLServerReplicationScript.sql` file.
- To successfully recover from the loss of the Publisher and Subscriber server, you must reconfigure replication by using existing NA data. Refer to ["Loss of a Database Server"](#) on page 39 for information on restoring databases.

Planning

This section includes information for initial replication setup on a Publisher and a Subscriber. NA will be offline during initial replication. It is recommended that you carefully read the following sections so as to streamline the replication process. A new database instance on the Subscriber is manually created when running initial replication setup.

When initially setting up replication, complete the following table before starting. Be sure to save this information. You will need it each time you upgrade in the future.

Table 1 Distributed System Server Information

Information to Collect	NA Core 1	NA Core 2
Time Zone Offset from UTC		Same for all servers in the NA mesh
Application Server Data	NA Application Server 1	NA Application Server 2
NA App Server FQDN		
NA App Server RMI Port		
Database Server Data	Database Server 1 (Publisher)	Database Server 2 (Subscriber)
Database Server FQDN		
SQL Server Listening Port		
Database Name		

Table 1 Distributed System Server Information, continued

Information to Collect	NA Core 1	NA Core 2
Database User		Same as for publisher
Database Password		Same as for publisher

Protocols, Databases, and Ports

NA communicates with devices using a combination of the following protocols, databases, and ports. If you use a given protocol, NA requires access to the corresponding port. Specifically, if NA communicates with devices protected by firewalls, these ports must be open. For more information, see ["Architecture" on page 9](#).

Protocol/Database/Port	From/To
NA server (running the Management Engine, Syslog, TFTP) and network devices	
Telnet (port 23)	From the NA server to network devices.
SSH (port 22)	From the NA server to network devices.
TFTP (port 69/udp)	From network devices to the NA server.
Syslog (port 514/udp)	From network devices to the NA server.
SNMP (port 161/udp)	From the NA server to network devices.
Between the database servers	
SQL Server (port 1433)	In a Distributed System configuration, the SQL Server processes connect to each other on port 1433.
Between the NA servers	
JNDI (ports 1098, 1099)	NA server to NA server. You can change this by editing the NA configuration files. Please contact Customer Support for assistance.
RMI (ports 4444 and 8083)	NA server to NA server. You can change this by editing the NA configuration files. Please contact Customer Support for assistance.
Between the NA server and the database server	
SQL Server (port 1433)	From the NA server to a SQL Server database server.
NA server and NA users	

Protocol/Database/Port	From/To
HTTPS (port 443)	From the NA server to NA users. You can change this by editing the NA configuration files. Please contact Customer Support for assistance.
Telnet (port 23 - Windows or 8023 - Linux)	From the NA client to the NA server. This can be changed from the Administrative Settings option.
SSH (port 22 - Windows or 8022 - Linux)	From the NA client to the NA server. This can be changed from the Administrative Settings option.

Unpacking the Replication Script Installation Bundle

The setup files for the NA Multimaster Distributed System are the standard setup files for a normal NA installation, with the addition of the `SQLServerReplicationScriptToolBundle.zip` file. This file should be unzipped onto a standard NA core server. The setup files include a Java program that you run to generate SQL scripts for replication setup. This program uses the Java runtime that is available on the NA core server.

Creating a Two NA Core SQL Server Replication Environment

NA can already be installed on one NA core server and database server (a single NA core). Alternatively, you can complete the first NA core installation as part of setting up initial replication.

This procedure uses the following identifiers:

- NA core servers: `App1` and `App2`
- SQL Server database names:
 - NA1 on database server 1, the publisher
 - NA2 on database server 2, the subscriber
- NA database user for both databases: `nauser`
- Password for the NA database user: `napass`

To use a different identifier, substitute the actual value for each instance of the example value within the procedure.

To set up initial replication between two NA cores, complete the following tasks:

- ["Task 1: Verify Prerequisites" on the next page](#)
- ["Task 2: \(New Installations Only\) Create the NA Schema on Database Server 1" on the next page](#)

- ["Task 3: Prepare for Replication" on the next page](#)
- ["Task 4: Configure Replication" on page 21](#)

Task 1: Verify Prerequisites

Prepare two database servers and two core servers. For best performance, each core server-database server pair should be co-located. Additionally, the core server-core server link and the database server-database server link should each be a high-speed connection.

Verify that the following prerequisites have been met:

- The two database servers are running a supported version of SQL Server. Both database servers must use the same version of the database software.
 - Identify the user name (for example, *sa*) and password of a SQL Server user account with the *sysadmin* role on both database servers.
 - Ensure `sqlcmd` access to both database servers.
You will need to supply credentials for a database user account that is a member of the *sysadmin* role when running the scripts.
- The SQL Server agent service is running on database server 1, the publisher.
 - Identify the user name and password of a Windows user account under which SQL Server agents can run.
- The two core servers that will run NA have working hostnames. Note the following:
 - Each core server should have a high-speed connection to one of the database servers.
 - For core server hardware and operating system requirements, see the *NA Support Matrix*.
- The host names of both database servers and both core servers are in the `hosts` file on each core server. This file is located as follows:
 - *Windows*: `<Drive>:\Windows\System32\drivers\etc\hosts`
 - *Linux*: `/etc/hosts`
- All database servers and core servers are set to use the same time and time zone.

Task 2: (New Installations Only) Create the NA Schema on Database Server 1

If NA has not yet been installed, create the NA schema on database server 1 by following these steps:

1. Install NA on the first core server (App1).

During installation, supply the following database credentials:

- For the database IP address or hostname, enter the fully-qualified domain name of database server 1.
 - For the database port, enter the port on database server 1 that NA will use to communicate with the database.
 - For the database name, enter the name of the NA database on the database server 1 (for example, NA1).
 - For the database user name and password, enter a name and password for accessing the NA database, for example, `nauser` and `napass`.
2. After NA installation is complete, log on to NA (as `nauser`) to ensure that it works as expected.
If NA does not work correctly, follow the steps in ["Recovering from a Failed Replication Configuration" on page 24](#).

Task 3: Prepare for Replication

To configure replication between the publisher and the subscriber databases, follow these steps:

1. Stop all NA services App1. See ["Start, Stop, or Restart All NA Services" on page 43](#).
2. If the NA database contains working data (is not a new installation), back up the database.
Alternatively, if you are recovering from a failed replication configuration and had working data before starting configuration, restore the database from backup at this time.
3. On database server 1, create a shared directory (for example, `C:\NA_Share`).
 - Set the sharing permissions so that both database servers have read-write access to this directory.
 - Also set the sharing permissions so that the administrative user on App1 (or other system) who will run the Java script in [step 2 of Task 4](#) has read-write access to this directory.
 - Ensure that the directory has at least 50MB available disk space. If the NA database contains working data, this requirement might increase.
4. On database server 2, create an empty database. Note the following:
 - Use a default database instance. (NA replication does not support a named instance.)
 - Use both Windows and SQL Server authentication.
 - Enable full-text indexing.

- The name of this database must be *different* from the name of the first NA database, for example, NA2 .
 - In all other aspects, such as privileges and owner, this database configuration must be the same as the configuration of the first database.
5. On App1 , unpack the SQLServerReplicationScriptToolBundle.zip file to a known location with low security, for example, C:\tmp or /tmp.
 6. From the known location of the previous step, customize the SQLServerReplicationScriptTool.properties file for your environment:
 - a. In a text editor such as WordPad or vi, open the SQLServerReplicationScriptTool.properties file.
 - b. Search for and replace the text REPLACEME with the appropriate value for that variable.
 - Use short hostnames to identify the database servers.

Tip: Verify DNS resolution of the database server hostnames to IP addresses.

- Use fully-qualified hostnames to identify the core servers and the replication directory.
- Set db.username.0 to sa or a SQL Server user with the sysadmin role. Set db.password.0 to the password for the specified SQL Server user.
- Set windows.username.0 to either <machineName>\\<administrator> or <domain>\\<domainUser>. If you use the first format, ensure that the administrator can access the shared directory created in [step 3](#) of this task.

- For example:

```
db.server.0=db1
db.name.0=NA1
db.username.0=sa
db.password.0=sa_pass
windows.username.0=db1\Administrator
windows.password.0=adminpass
db.tableowner.0=dbo
db.port.0=1433
app.server.0=App1.com
app.rmiport.0=1099
app.corename.0=Core1
replication.data.dir=\\db1.example.hp.com\NA_Share
db.server.1=db2
db.name.1=NA2
db.port.1=1433
app.server.1=App2.example.com
app.rmiport.1=1099
app.corename.1=Core2
```


- c. Set `timezone_offset` to the value that matches the time zone setting for all servers in the distributed system.
- d. Verify that `mode` is set to `initial`.

Task 4: Configure Replication

1. From the known location of [step 5 of Task 3](#), run `java -version` to verify that Java is version 1.7 or later.

2. From the known location of [step 5 of Task 3](#), run the `ReplicationScriptTool`:

```
java -classpath . SQLServerReplicationScriptTool
```

This command creates two scripts for starting replication. By default, the scripts are named `SQLServerPreSnapshotScript.sql` and `SQLServerReplicationScript.sql`.

Tip: The following error message can mean that Java does not have permission to run the replication tool:

```
Could not find the main class: ReplicationScriptTool.
```

Move all files from the replication bundle to a directory with lower security, and then run the `java` command from that directory.

3. Copy the `SQLServerPreSnapshotScript.sql` script to the shared directory created in [step 3 of Task 3](#).
4. Copy the `SQLServerReplicationScript.sql` script to a known location on database server 1, for example, `C:\tmp`.
 - Set the sharing permissions so that the SQL Server `sysadmin` user account has read-write access to this directory.
 - Verify that `sqlcmd` is accessible from this directory.

5. From the known location on database server 1 ([step 5 of Task 3](#)), run the `SQLServerReplicationScript.sql` script by using the `sqlcmd` command:

```
sqlcmd -S <Publisher> -U <User> -P <Password>  
-i SQLServerReplicationScript.sql -o log.txt
```

For `<Publisher>`, use the short hostname of database server 1, for example `db1`.

For `<User>` and `<Password>`, use a SQL Server user account with the `sysadmin` role, for example, `sa`.

This command creates a directory named `UNC` in the shared directory created in [step 3 of Task 3](#). It also populates the `UNC` directory with a snapshot of the `NA` database on database server 1.

6. Verify that the new `UNC` directory contains the `NA` schema.

If the `UNC` directory does not contain the `NA` schema, follow the steps in ["Recovering from a Failed Replication Configuration"](#) on page 24.

7. Finish configuring replication by entering the following Transact-SQL queries on the appropriate database servers:

Tip: If you copy the select statement from this PDF and paste it to the sqlcmd line, re-type the single quotation mark characters (') on the command line.

- **Publisher:**

```
sqlcmd -S <Publisher> -U <User> -P <Password>
use <DatabaseName>
Select count(*) from Information_Schema.Tables where Table_Type = 'Base
Table' and Table_Name like 'RN_%'
go
```

For <Publisher> , use the short hostname of database server 1, for example db1.

For <User> and <Password>, use a SQL Server user account with the sysadmin role, for example, sa.

<DatabaseName> is the name of the NA database on database server 1, for example NA1.

- **Subscriber:**

```
sqlcmd -S <Subscriber> -U <User> -P <Password>
use <DatabaseName>
Select count(*) from Information_Schema.Tables where Table_Type = 'Base
Table' and Table_Name like 'RN_%'
go
```

For <Subscriber>, use the short hostname of database server 2, for example db2.

For <User> and <Password>, use a SQL Server user account with the sysadmin role, for example, sa.

<DatabaseName> is the name of the NA database on database server 2, for example NA2.

8. Verify that the previous step completed correctly.

The query results should be the same on both database servers. For example:

```
Changed database context to 'NA'.
```

```
-----
```

```
84
```

```
(1 row affected)
```

If the query results for both database servers are not identical, follow the steps in ["Recovering from a Failed Replication Configuration" on page 24](#).

9. Verify that the replication is working correctly. Make sure:

- The log file generated by running the replication SQL script contains no errors.
- In Microsoft SQL Management Studio, examine the NA databases:
Under Databases, look for the database name.

- Verify that the table count is the same for each database.
- Verify that the RN_CORE table on each database contains the appropriate list of servers in the NA mesh.
- Verify that the replication of data is working correctly by adding a comment (for example, Test from db1 to db2) to the CoreID=1 row of the RN_CORE table for the publisher database. After a minute, this comment should be visible for the same table row of the subscriber database.

If replication is not working correctly, follow the steps in ["Recovering from a Failed Replication Configuration" on the next page](#).

10. Install NA on the second core server (App2).

During installation, connect NA to the database on Master 2. When prompted for the database credentials, choose: use existing database.

Note: When prompted for database user credentials, enter sa or a SQL Server user with the sysadmin role. This user name should be same one used in the SQLServerReplicationScriptTool.properties file in [step 6](#) of Task 3.

11. Stop all NA services App2. See ["Start, Stop, or Restart All NA Services" on page 43](#).
12. Copy the distributed.rcx file from the known location of [step 5](#) to the following directory on both core servers, App1 and App2 :
 - *Windows:* <NA_HOME>\jre
 - *Linux:* <NA_HOME>/jre
13. Start all NA services on both NA core servers, App1 and App2. See ["Start, Stop, or Restart All NA Services" on page 43](#).
14. Connect to the NA console on both core servers, App1 and App2, (as user nauser), and ensure that there are no issues.

Tip: An RMI error message at this point can mean that NA is unable to identify the localhost. For more information, see ["RMI Errors in the NA Console" on page 41](#).

15. Verify the NA installation:
 - a. Edit an object on one NA server (for example, a Comments field for a device).
 - b. Wait a minute and then verify that the updated comment exists on the second server.
 - c. Check the status of the Oracle Distributed Monitor in the NA console to ensure that no problems are being reported. (For information, see ["Distributed Monitor Results Page" on page 32](#).) It could take up to five minutes for this monitor to initially run.
16. *Optional.* Delete the shared directory created in ["Task 3: Prepare for Replication" on page 19](#) (for example, C:\NA_data).

Recovering from a Failed Replication Configuration

If you see errors during replication setup, follow these steps:

1. Uninstall NA from both core servers.
2. Delete the NA databases from both database servers.
3. Redo the replication configuration process starting with ["Task 2: \(New Installations Only\) Create the NA Schema on Database Server 1" on page 18.](#)

Removing Replication

When deleting a subscriber from a NA Mesh, NA Core 1 is the Publisher and NA Core 2 is the Subscriber to remove.

System Requirements

You must have the following items configured before deleting a Subscriber from a NA Mesh:

- sqlcmd access to both database servers in the mesh.
- The SQLServerReplicationScriptTool application installed on a Java-capable system.

Deletion Steps

To delete the Subscriber from an NA Mesh:

1. Collect the following information:
 - Login name and password of a SQL Server login that is a member of sysadmin on both database servers in the mesh.
 - Database name, NA server hostname, NA server RMI listening port, database hostname, and database listening port for NA Core 1 and NA Core 2.
2. Ensure that all devices in NA belong to partitions on NA Cores that are not going to be removed.
3. Modify all partitions to point to the publisher. Alternatively, remove those partitions.
4. Stop all NA services on the subscriber NA core server. See ["Start, Stop, or Restart All NA Services" on page 43.](#)
5. Delete the RN_CORE entry for the subscriber using the following commands using sqlcmd:

```
UPDATE RN_SITE SET OwningCoreID = 1 WHERE OwningCoreID = <coreID>;
UPDATE RN_SITE SET ManagingCoreID = 1 WHERE ManagingCoreID = <coreID>;
UPDATE RN_SCHEDULE_TASK SET CoreID = 1 WHERE CoreID = <coreID>;
DELETE FROM RN_CORE WHERE CoreID = <coreID>;
```

Tip: To identify the Core ID of the NA Core to delete, enter:

```
SELECT * FROM RN_CORE;
```

6. Update the variables for NA Core 2 in the `SQLServerReplicationScriptTool.properties` file.
 - a. Make sure that the variables for NA Core 1 are correct.
 - b. Set `mode` to `delete_server`.

These properties are described in detail in the file.

7. From the replication bundle directory, run the `ReplicationScriptTool`:

```
java -classpath . SQLServerReplicationScriptTool
```

8. Copy the `SQLServerReplicationScript.sql` script to a known location on the publisher database server, for example, `C:\tmp`.
 - Set the sharing permissions so that the SQL Server `sysadmin` user account has read-write access to this directory.
 - Verify that `sqlcmd` is accessible from this directory.

9. From the known location on database server 1 ([step 8](#) of this task), run the `SQLServerReplicationScript.sql` script by using the `sqlcmd` command:

```
sqlcmd -S <Publisher> -U <User> -P <Password>  
-i SQLServerReplicationScript.sql -o log.txt
```

For `<Publisher>`, use the short hostname of database server 1, for example `db1`.

For `<User>` and `<Password>`, use a SQL Server user account with the `sysadmin` role, for example, `sa`.

10. Remove the `distributed.ncx` file from each NA core server.
11. Start all NA services on NA Core 1. See ["Start, Stop, or Restart All NA Services" on page 43](#).
12. On the publisher, create a script with the following contents:

```
use [master]  
exec sp_dropdistributor @no_checks = 1  
GO
```

Upgrade the NA Mesh

During the NA upgrade process, the NA Cores must be completely offline. You will be upgrading the:

- NA core servers
- NA database schema
- Replication between the database cores

Note the following:

- The NA mesh upgrade path is as follows:
NA 10.00 to NA 10.10
Enter this path at your current version of NA.
- At each step on the NA mesh upgrade path, both NA cores in the NA mesh before moving to the next step in the upgrade path.

For upgrade instructions, see the following topic:

- ["Upgrading from NA 10.00 to NA 10.10" below](#)

Upgrading from NA 10.00 to NA 10.10

To upgrade from NA 10.00 to NA 10.10, be sure that:

- You have `sqlcmd` access to NA Core 1 and NA Core 2.
 - The `ReplicationScriptTool` bundle files for NA 10.00 are installed on a Java-capable system (on one of the NA systems).
1. Stop all NA services on both NA cores in the NA Mesh. See ["Start, Stop, or Restart All NA Services" on page 43](#).
 2. Collect the following information:
 - Login name and password of a SQL Server login that is a member of `sysadmin` on NA Core 1 and NA Core 2.
 - Database name, NA server hostname, NA server RMI listening port, database hostname, and database listening port for NA Core 1 and NA Core 2.
 3. Update the variables for the publisher and subscriber in the `SQLServerReplicationScriptTool.properties` file. Ensure that you modify all "REPLACEME" text entries in the `SQLServerReplicationScriptTool.properties` file with the appropriate values for your environment.

Note: All servers should be listed in the `SQLServerReplicationScriptTool.properties` file. Set the `mode` property to `upgrade_from_10_0`.

4. Run the `ReplicationScriptTool`. Note that you must run this on a system that has Java 1.7 installed.
Enter:

```
java -classpath . SQLServerReplicationScriptTool
```
5. Run the first output file using `sqlcmd` with a login that is a member of the `sysadmin` role on NA Core 1. Enter:

```
sqlcmd -S <PublisherServer> -U <user> -P <password> -i  
SQLServerReplicationScript.sql -o log.txt
```

Where `<PublisherServer>` is the server of Publisher, `<user>` and `<password>` were collected in [step 2](#).

6. Verify that the replication is working correctly. Make sure:
 - The log file generated by running the replication SQL script contains no errors.
 - In Microsoft SQL Management Studio, examine the NA databases:
Under Databases, look for the database name.
 - Verify that the table count is the same for each database.
 - Verify that the RN_CORE table on each database contains the appropriate list of servers in the NA mesh.
 - Verify that the replication of data is working correctly by adding a comment (for example, Test from db1 to db2) to the CoreID=1 row of the RN_CORE table for the publisher database. After a minute, this comment should be visible for the same table row of the subscriber database.
7. Upgrade each NA core server as described in the *Upgrading to NA 10.10 from a Different System* chapter or the *Upgrading to NA 10.10 on the Same System* chapter in version 10.10 of the *NA Installation and Upgrade Guide*, as appropriate.

Run the upgrade procedures in parallel. That is, complete step 1 on each NA core server before initiating step 2 on any NA core server, and so forth. Follow the referenced procedure through the step to run the NA 10.10 Service Pack Installer.

Note the following:
 - To prevent database access, on each NA core server, after the NA 10.10 Service Pack Installer runs, stop all NA services. See ["Start, Stop, or Restart All NA Services"](#) on page 43.
 - The NA database upgrade has already been handled by running the replication script in [step 4](#).
 - Do *not* upgrade SQL Server while upgrading NA.
8. If you moved NA to different core servers in the previous step, in Microsoft SQL Management Studio update the RN_CORE table on one database with the fully-qualified domain names of the new NA core servers.
9. Start all the NA services on the master core server and make sure that you can login to NA on the master core. See ["Start, Stop, or Restart All NA Services"](#) on page 43.
10. Start the NA services on all the other new cores.
11. Complete the upgrade procedure from the step to run the Data Pruning task.
12. Temporarily enable diagnostic check points to populate the Most Recent Diagnostic column in the NA database with accurate data.
 - a. Log on to the NA console as an NA administrator.
 - b. On the Configuration Mgmt page (**Admin > Administrative Settings > Configuration Mgmt**) enable the **Force a save of the latest diagnostics** option under Diagnostics.

- c. Create a new Run Diagnostics task with the following configuration:
 - Set **Applies to** to the entire device inventory.
 - In the **Diagnostics to Run** field, select all diagnostics.
- d. After the Run Diagnostics task completes, disable the **Force a save of the latest diagnostics** option on the Configuration Mgmt page.

Complete this step on only one NA core. This step is necessary in Multimaster Distributed System environments only.

Chapter 3: System Administration

This chapter contains the following topics:

- ["Getting Started" below](#)
- ["How NA Removes In-Memory and Database Information" below](#)
- ["Suspending Replication for Database Maintenance" below](#)
- ["NA Generated Events" on the next page](#)
- ["Using the NA Distributed System Pages" on page 32](#)

Getting Started

In general, an NA core server that is part of a Distributed System NA Mesh should be transparent to users. However, there are a number of operations that the system administrator might need to do to keep the Distributed System NA Mesh functioning properly.

How NA Removes In-Memory and Database Information

There could be a delay in removing or cancelling a task because NA must communicate with the appropriate owning NA Core to perform this operation. To ensure proper removal of all in-memory and database information, and to avoid replication conflicts due to matching timestamps, NA active tasks are automatically deleted on the NA Core with which they are associated. An active task is any task that does not have the "Succeeded," "Failed," "Duplicate", "Skipped", or "Warning" status.

Keep in mind that deleted tasks could be displayed in task lists for a few moments while the replication process pushes the deletes to other NA Cores in the system. In addition, if the NA Core from which the task originated is not accessible, the delete will fail.

Suspending Replication for Database Maintenance

To suspend replication because you are bringing down one or both database servers for maintenance, complete the following procedure:

1. Stop all NA services on both NA core servers. See "Start, Stop, or Restart All NA Services" on [page 43](#).
2. Disable database replication by using the Disable Publishing and Distribution Wizard in SQL Server Management Studio. For information, see the Microsoft TechNet Library:
 - SQL Server 2008: *How to: Disable Publishing and Distribution (Replication Transact-SQL Programming)* at <http://technet.microsoft.com/en-us/library/ms147921.aspx>
 - SQL Server 2012: *Disable Publishing and Distribution* at <http://technet.microsoft.com/en-us/library/ms151759.aspx>

NA Generated Events

By default, NA generates system events. Event rules can alert you to certain error conditions requiring attention. Each event is listed below, along with an explanation and required action to be taken. You should examine the default "Distributed System" event rule to ensure all of the events are included in the event rule and that the event rule is configured to send the email notification to the appropriate administrator.

Note: For information about configuring email notification, see the *NA User Guide*.

Distributed System - Uniqueness Conflict

Event format:

rowguid: <the guid of the database row that had the conflict>
origin_datasource: <database server>.<database name>
reason_text: <a description of why the conflict occurred>
conflict_type: <type of conflict according to SQLServer>
reason_code: <error message from SQLServer, depends on the type of conflict>
repl_create_time: <time the conflict was generated by SQLServer>

conflict_table: <where SQLServer stores the conflicting data>
dataTable: <NA table that contains the conflicting data>
SQLServerConflictID: <ID of the conflict recorded by NA>
status: <status>

Conflicting Data: <the columns that are conflicting>

Refer to the SQL Server Replication documentation for instructions on correcting this conflict.

This event is sent when NA detects a conflict in a uniqueness constraint. You will receive an event per NA Core, since the conflicts are local to each NA Core. To correct a naming conflict, go to one NA Core and update the names for the affected objects. Both the renamed <NAME>.<SID> and <NAME> should be edited to force an update on the other NA Cores.

To correct a rule priority conflict, go to the Device Password Rule Priority Reset page, and click the Reset Priority button. See "[Device Password Rule Priority Reset Page](#)" on page 36.

If this does not solve the problem, you will need to manually edit the rules on each NA Core, setting the priority order correctly and verifying existence of correct rules. When finished, return to the Device Password Rule Priority Reset page and click the Reset Priority button.

Distributed System - Time Synchronization Warning

Event format:

Time difference: <N> seconds
Local Core: <hostname>
Remote Core: <hostname>

NA replication conflict resolution depends on a latest timestamp method. To work correctly, this requires different NA servers' clocks to differ by only a small amount. To correct this problem, make sure that the time is synchronized on the NA server systems across the NA Mesh.

Distributed System - RMI Error

Event format:

Local Core: <hostname>
Remote Core: <hostname>
Error: <Exception text>

This error typically occurs when there are network problems between the NA servers. To troubleshoot this problem, make sure:

1. The host that the server cannot connect to is up and running.
2. The NA instance on that host is running.
3. From a command line, enter `ping <host>` to ensure that network connectivity exists between servers.
4. From a command line, enter `telnet <host> to port 1099` (or whatever your RMI listen port is set to) to ensure that RMI connections are being accepted. If working correctly, you should get back some data that includes the text string "java.rmi.MarshalledObject".

Failures of any of these steps will point to corrective actions needed, such as updating the RMI port being used in the Edit NA Core page, or restarting NA to make sure that the RMI port has been bound correctly and is not being used by another application.

Distributed System - Stopped Merge Agent Job

Event format:

```
Merge Agent Job Stopped  
<Job Details>  
[Successfully attempted to restart the job.]
```

NA monitors the replication merge agent and sends the event if it determines that the agent has stopped. If the “Successfully attempted to restart the job” message is displayed, NA restarted the agent. The agent’s status can be reviewed in SQL Server Management Studio.

Distributed System - Data Synchronization Delay Warning

Event format:

```
Publisher ‘<DatabaseName>’ has been unable to push changes  
to subscriber ‘<DatabaseName2>’ since <tim>. If you wish to  
avoid potential data loss, please rectify this as soon as  
possible.
```

```
Subscriber ‘<DatabaseName2>’ has been unable to push changes  
to Publisher ‘<DatabaseName>’ since <tim>. If you wish to  
avoid potential data loss, please rectify this as soon as  
possible.
```

NA has detected that the replication system is having trouble keeping the data and the databases in sync. Examine the databases, merge agents, and network connections between the databases for issues.

Using the NA Distributed System Pages

When you install the Distributed System software, the NA user interface includes specific Distributed System pages to help you monitor and administer the system.

Distributed Monitor Results Page

The Distributed Monitor Results page displays the overall health of the Distributed System. By default, the Distributed monitor runs every five minutes.

To open the Distributed Monitor Results page, on the menu bar under Admin select Distributed and click Monitor Results. The Distributed Monitor Results page opens.

NA monitor several properties necessary for proper functioning of the Distributed System, including:

- **RMI Connections** — RMI (Remote Method Invocation) is Java's remote procedure call protocol. The distributed system makes RMI calls between NA servers in the NA Mesh to transfer information about scheduled tasks, system settings, software images, and so on.
- **Uniqueness Conflicts** — Certain NA database constraints restrict columns to unique values. In a distributed environment, these constraints can be violated when updates are made on two different NA Cores where the unique column is set to the same value. These conditions are captured by the Replication Conflict Resolution System and logged. NA cannot automatically resolve these conflicts. They must be resolved manually.
- **Merge Agents** — Merge Agents are the processes at the Publisher that handle transferring replicated data. NA monitors the SQL Server jobs that schedule these processes. If for some reason the process stops, NA reports that here. Stopped Merge Agent jobs should be restarted as soon as possible.
- **Local NA Core Definition** — The local NA Core must be able to determine which entry in the RN_CORE table it is. If the "The *local core for this system is undefined.*" error message is displayed, the CoreHostname property needs to be updated for the NA Core. This can be done using the Edit Core page. For information, see "[Edit Core Page](#)" on page 36.

Note: When this condition occurs, the NA Management Engine's log file will contain the following text: "*Fatal error - could not assign local core.*"

The CoreHostname value can be either the DNS, *etc/hosts* value, or an IP address. If you are using an NA server with multiple IP addresses, you might need to tell NA which IP address to use. This is done by adding the following setting to the *distributed.rcx* file:

```
<option name="distributed/NA_server_local_ip">A.B.C.D</option>
```

Note: The *distributed.rcx* file is located in the same location as the *appserver.rcx* file.

The value A.B.C.D should be replaced with the appropriate NAT IP address for the NA server and should match the RN_CORE table's CoreHostname value for that NA Core.

Distributed Conflict List

The Distributed Conflict List page displays the uniqueness constraint conflict list. This provides information about uniqueness conflicts that will need to be manually corrected to ensure that the databases in the NA Mesh are in sync.

To open the Distributed Conflict List, on the menu bar under Admin select Distributed and click Conflict List. The Distributed Conflict List opens.

Distributed Conflict List Page Fields

Field	Description
origin_datasource	The database on which the conflict occurred.
Table	The table on which the conflict occurred.
rowguid	The guid of the row on which the conflict occurred.
Status	Status is “event_generated” if the system has sent an alert that this conflict exists.
Actions	You can select the following options: <ul style="list-style-type: none"> • Detail — Opens the View Distributed Conflict page, where you can view details on an individual uniqueness constraint. See "View Distributed Conflict Page" below. • Delete — Deletes the conflict from the database.

View Distributed Conflict Page

The View Distributed Conflict page provides details on a specific uniqueness constraint.

To open the View Distributed Conflict page:

1. On the menu bar under Admin select Distributed and click Conflict List. The Distributed Conflict List opens.
2. In the Actions column, click the Detail option. The View Distributed Conflict page opens.

View Distributed Conflict Page Fields

Field	Description
origin_datasource	The database on which the conflict occurred.
Table	The table on which the conflict occurred.
Conflicting Data	The columns and their values that are causing the conflict.
reason_text	A description of why the conflict occurred.
rowguid	The guid of the row on which the conflict occurred.
conflict type	The type of conflict according to the SQL Server.
reason_code	Depending on the type of conflict, the error message from the SQL Server.
MS_repl_create_time	The time the conflict was generated by the SQL Server.

Field	Description
conflict_table	The location where the SQL Server stores the conflicting rows.
Status	Status is "event_generated" if the system has sent an alert that this conflict exists.

Partition Reassignment Page

The Partition Reassignment page enables the partition-to-NA Core mapping to be modified. This is useful for failover of partitions from one NA Core to another and for restoring partitions back to their original NA Core.

To open the Partition Reassignment page, on the menu bar under Admin select Distributed and click Partition Reassignment. The Partition Reassignment page opens. You can select NA Cores from the drop-down menu.

List Cores Page

The List Cores page lists all NA Cores in the NA Mesh. This page provides information to properly manage the Distributed System.

To open the List Cores page, on the menu bar under Admin select Distributed and click Core List. The List Cores page opens.

List Cores Page Fields

Field	Description
Name	The NA Core's name.
Core Hostname	The hostname of the NA Core's NA server.
Is Master?	Is the NA Core the Publisher? (Yes or No)
Timezone Offset	The timezone offset of the actual NA Core server.
Status	Currently, there is only Normal status.
Realm	The default Realm for the NA Core.
Actions	You can select the following option: <ul style="list-style-type: none">• Edit — Open the Edit Core page. See "Edit Core Page" on the next page

Edit Core Page

The Edit Core page enables you to edit the NA Core definition.

To open the Edit Core page:

1. On the menu bar under Admin select Distributed and click Core List. The List Cores page opens.
2. In the Actions column, click the Edit option. The Edit Core page opens.

You can complete the following fields:

- Name — Enter the NA Core name.
- Database Identifier — Enter the database name. This information is needed to make connections to a particular SQL Server instance on a server.
- Core Hostname - Enter the hostname of this NA Core's server.
- RMI Port — Enter the RMI port. RMI (Remote Method Invocation) is Java's remote procedure call protocol. The distributed system makes RMI calls between NA servers in the NA Mesh to transfer information about scheduled tasks, system settings, software images, and so on.
- Database hostname — Enter the Database hostname.
- Database Port — Enter the port on the database server with which NA communicates with the database.
- Timezone Offset — Select a Timezone offset from the drop-down menu.
- Replication Admin User — Enter the name of the Replication Admin user. The Replication Admin user is created and used by the Oracle database to manage replication.
- Replication Password — Not applicable for SQL Server.
- Confirm Replication Password — Not applicable for SQL Server.
- Comments — Add any comments about the NA Core.
- Realm Name — Enter the Realm in which the NA Core resides. For information about segmenting devices, see the *NA User Guide*.

Device Password Rule Priority Reset Page

The Device Password Rule Priority Reset page enables you to reset device password rule priorities in the event that a uniqueness constraint conflict occurs for those objects.

To open the Reset Password Priority page, on the menu bar under Admin select Distributed and click Device Password Rule Priority Reset. The Device Password Rule Priority Reset page opens.

Click the Reset Priority button to reset the device password rule priorities.

Renew Configuration Options Page

The Renew Configuration Options page enables you to reset the configuration options when the configuration options on an NA Core become out-of-sync with other servers in the NA Mesh.

To open the Renew Configuration Options page, on the menu bar under Admin select Distributed and click Renew Configuration Options. The Renew Configurations Options page opens.

Click the Renew Config Options button to ensure that all options on the NA Core are in sync with the rest of the NA Mesh.

Chapter 4: Failover and Recovery

This chapter contains the following topics:

- ["Failover" below](#)
- ["Recovery" below](#)

Failover

When the network has been configured to failover, if an NA Core fails, users can continue to access all data in the system using a different NA Core. All partitions that were originally managed by the failed NA Core can be pointed to a new NA Core using the Partition Reassignment page. For information, see ["Partition Reassignment Page" on page 35](#). Procedures for system recovery will vary depending on how the remote server failed.

Recovery

There are three basic recovery scenarios:

- Loss of network connectivity
- Loss of an NA core server
- Loss of a database server

Loss of Network Connectivity

In the case of lost network connectivity, failover occurred due to network issues. No problems occurred with the NA core server or with the SQL Server database server. Recovery consists of the following steps:

1. Resolve the network issues.
2. Reset partitions that had been reassigned back to their original NA Core. This can be accomplished in NA. See ["Partition Reassignment Page" on page 35](#).
3. If any drivers have been added to the system during the outage, click the "Reload Drivers" button on the Start/Stop Services page. This action reloads the driver files and pushes them across to other NA Cores in the NA Mesh. This action should be performed on the NA server where the drivers were added. For information, see the *NA User Guide*.

4. If any system settings have been modified during the outage, use the “Renew Config Options” page to make sure options are synced across the NA Mesh. See ["Renew Configuration Options Page" on page 37](#).
5. If any NA Cores have lost connectivity for a long period of time, restart the NA Core server that lost connectivity after data sync so as to reload certain partition data and avoid exception errors due to obsolete data.

After the network issues are resolved, the system should recover as replication synchronizes data between the databases.

Loss of an NA Core Server

In cases where the NA core server suffers a failure that requires re-installation of the NA application, recovery consists of the following steps:

1. During NA installation, select the “Use existing database” option. In addition, the database selected should be the one the failed server was previously using.
2. Add the *distributed.rcx* file from the *ReplicationScriptToolBundle* to the directory where the *appserver.rcx* file resides.
3. Re-add any NA Core-specific special case options for patches and support issues.
4. Restart NA.
5. Reset partitions that had been re-assigned back to their original NA Core. This can be accomplished in NA. See ["Partition Reassignment Page" on page 35](#).
6. If any drivers have been added to the system during the outage, click the “Reload Drivers” button on the Start/Stop Services page. This action reloads the driver files and pushes them across to other NA Cores in the NA Mesh. This action should be performed on the NA server where the drivers were added. For information, see the *NA User Guide*.
7. If any system settings have been modified during the outage, use the “Renew Config Options” page to make sure options are synced across the NA Mesh. See ["Renew Configuration Options Page" on page 37](#).
8. Edit the original NA Core to modify any parameters that may be different (perhaps the installation happened on a new server with a different hostname).
9. Copy the software images repository from a good NA Core to the recovered NA Core.

Loss of a Database Server

In the case of a lost database server, the NA core server is still running but cannot access the database. The database will need to be rebuilt and replication set up again on the database. Recovery consists of the following steps:

1. Pause or delete any tasks that appear to be waiting, pending, or not running because they are associated with the lost database server. You can perform this action on the other NA core server

- in the NA mesh.
2. If the lost database server is the Subscriber, replication needs to be removed from the NA mesh. For information, see ["Removing Replication" on page 24](#). Keep in mind that Replication can be reconfigured after removal. For information, see ["Creating a Two NA Core SQL Server Replication Environment" on page 17](#).
 3. If the lost database server is the Publisher, replication needs to be reinstalled.
 - a. Export all RN_% tables from the Subscriber database.
 - b. Create a new database on the NA Core 1 database server with data exported from the Subscriber database.
 - c. Reinstall NA on the NA Core 1 Server. Be sure NA points to the existing database on NA Core 1.
 - d. Edit the RN_CORE entry. See ["Deletion Steps" on page 24](#) (step 5).
 - e. Install replication. For information, see ["Creating a Two NA Core SQL Server Replication Environment" on page 17](#).
 4. Make sure the SQL Server Agent is running on the restored database server. Open a command prompt on the restored database server and enter: **net start**. You should see SQL Server Agent (MSSQLSERVER) in the output. If you do not, enter: **net start SQL Server Agent <MSSQLSERVER>**.
 5. Reset partitions that had been reassigned back to their original NA Core. This can be accomplished in NA. See ["Partition Reassignment Page" on page 35](#).
 6. In NA, edit the NA Core that was recovered to make sure all information is correct for the new setup. For information, see the *NA User Guide*.

Chapter 5: Troubleshooting

This chapter contains the following topic:

- ["RMI Errors in the NA Console" below](#)
- ["Removing In-Memory and Database Information" on the next page](#)

RMI Errors in the NA Console

An RMI error that prevents NA console logon or inhibits use of the NA console can mean that NA is unable to identify the localhost.

RMI Error

Event format:

Local Core: <hostname>

Remote Core: <hostname>

Error: <Exception text>

This error typically occurs when there are network problems between the NA servers. To troubleshoot this problem, make sure:

1. The host that the server cannot connect to is up and running.
2. The NA instance on that host is running.
3. From a command line, enter `ping <host>` to ensure that network connectivity exists between servers.
4. From a command line, enter `telnet <host> to port 1099` (or whatever your RMI listen port is set to) to ensure that RMI connections are being accepted. If working correctly, you should get back some data that includes the text string `java.rmi.MarshalledObject`.

Failures of any of these steps will point to corrective actions needed, such as updating the RMI port being used in the Edit NA Core page, or restarting NA to make sure that the RMI port has been bound correctly and is not being used by another application.

To correct the problem, update the localhost section of the `hosts` file on each NA core server as follows:

Note: This solution is for static IP environments only.

1. In a text editor such as WordPad or `vi`, open the following file:
 - *Windows:* `<Drive>:\Windows\System32\drivers\etc\hosts`
 - *Linux:* `/etc/hosts`

2. Set the localhost line to read:

```
127.0.0.1 localhost
```

3. For each NA core server, add a line in the following format:

```
<xx.xx.xx.xx> <NA.example.com> <NA>
```

- Replace <xx.xx.xx.xx> with the IP address of the NA core server.
- Replace <NA.example.com> with the fully-qualified domain name of the NA core server.
- Replace <NA> with the short hostname of the NA core server.

Repeat [step 3](#) until the `hosts` file includes all NA core servers in the distributed system environment.

To use the updated hosts information, restart the NA core server.

Removing In-Memory and Database Information

To ensure proper removal of all in-memory and database information, and to avoid replication conflicts due to matching timestamps, NA active tasks are automatically deleted on the NA Core with which they are associated. An active task is any task that does not have the SUCCEEDED, FAILED, DUPLICATE, SKIPPED, or WARNING status.

Keep in mind that deleted tasks could be displayed in task lists for a few moments while the replication process pushes the deletions to other NA Core in the system. In addition, if the NA Core from which the task originated is not accessible, the task deletion fails.

Appendix A: Common Procedures

This section describes procedures that are common to many HP Network Automation Software (NA) configuration and maintenance tasks. It includes the following topics:

- ["Start, Stop, or Restart All NA Services" below](#)
- ["Disable All NA Services" on the next page](#)
- ["Working with .rcx Files" on page 45](#)

Start, Stop, or Restart All NA Services

Stopping the NA services before changing the NA configuration prevents conflicting data from being stored in the NA database. Some procedures call for restarting the NA services to read the updated configuration.

To start all NA services

- *Windows:* Open the **Services** control panel. In the list of services, right-click each of the following services, and then click **Start**:
 - **TrueControl ManagementEngine**
 - **TrueControl FTP Server**
 - **TrueControl SWIM Server**
 - **TrueControl Syslog Server**
 - **TrueControl TFTP Server**
- *Linux:* Run the following command:
`/etc/init.d/truecontrol start`

To stop all NA services

- *Windows:* Open the **Services** control panel. In the list of services, right-click each of the following services, and then click **Stop**:
 - **TrueControl ManagementEngine**
 - **TrueControl FTP Server**
 - **TrueControl SWIM Server**

- **TrueControl Syslog Server**
 - **TrueControl TFTP Server**
 - *Linux:* Run the following command:
`/etc/init.d/truecontrol stop`
- To restart all NA services**
- *Windows:* Open the **Services** control panel. In the list of services, right-click each of the following services, and then click **Restart**:
 - **TrueControl ManagementEngine**
 - **TrueControl FTP Server**
 - **TrueControl SWIM Server**
 - **TrueControl Syslog Server**
 - **TrueControl TFTP Server**
 - *Linux:* Run the following command:
`/etc/init.d/truecontrol restart`

Disable All NA Services

Some procedures call for disabling automatic startup of the NA services on system boot.

To disable all NA services

- *Windows:* Open the **Services** control panel. In the list of services, right-click each of the following services, click **Properties**, and then set Startup Type to **Disabled**:
 - **TrueControl ManagementEngine**
 - **TrueControl FTP Server**
 - **TrueControl SWIM Server**
 - **TrueControl Syslog Server**
 - **TrueControl TFTP Server**
- *Linux:*
`mv /etc/rc.d/rc5.d/S99truecontrol /etc/S99truecontrol`

Working with .rcx Files

The HP Network Automation Software (NA) property files use the .rcx extension. NA reads .rcx files in reverse alphabetical order. If a given setting is in multiple .rcx files, NA uses the last-read value. Thus, the settings in the `adjustable_options.rcx` file take precedence over the settings in the other .rcx files installed with NA.

Note: At startup, NA reads *all* files in the `jre` directory and interprets their contents for NA configuration options. For this reason, save all backup copies of .rcx files outside the root NA directory.

In Horizontal Scalability environments, NA shares the actual values of most settings, not the .rcx files, across the NA cores. When a setting is modified on one NA core, that setting is replicated to the other NA cores. If an NA core is not operational during the change replication, that NA core does not receive the change. In that case, at a later time, use the Admin > Distributed > Renew Configuration Options page to push changes to other NA cores.

Tip: The distributed system options section of the `appserver.rcx` file lists the settings that are specific to one NA core and are not shared across the NA cores.

Some configuration changes require .rcx file modifications. The .rcx files are located in the following directory:

- **Windows:** `<NA_HOME>\jre`
- **Linux:** `<NA_HOME>/jre`

Caution: Always edit .rcx files with care. These files use XML format. If a .rcx file change results in invalid XML, the NA console might not start correctly.

Tip: It is recommended to make all configuration changes in the `adjustable_options.rcx` file. NA patch installations and product upgrades might overwrite any of the other NA-installed .rcx files.

The general procedure for changing .rcx files is as follows:

1. Back up the .rcx file to a location outside the `<NA_HOME>` directory.
(NA reads all .rcx files within the NA directory structure.)
2. Add new content or update existing content as described in the instructions.
3. Save the .rcx file.
4. Reload the .rcx settings by doing *one* of the following:
 - In the NA console, on the Admin > Administrative Settings > User Interface page, click **Save**.
 - Run the `reload server options` command from the NA proxy.

- Restart the NA services.

Tip: Some changes do not take effect until the NA services have been restarted.

We appreciate your feedback!

If you have comments about this document, you can [contact the documentation team](#) by email. If an email client is configured on this system, click the link above and an email window opens with the following information in the subject line:

Feedback on Multimaster Distributed System on SQL Server Guide, May 2015 (Network Automation Software 10.10)

Just add your feedback to the email and click send.

If no email client is available, copy the information above to a new message in a web mail client, and send your feedback to network-management-doc-feedback@hp.com.