



# HP Virtualization Performance Viewer

Software Version: 2.20

Linux operating system

## Getting Started Guide for Virtual Appliance

Document Release Date: June 2015

Software Release Date: June 2015

## Legal Notices

### Warranty

The only warranties for HP products and services are set forth in the express warranty statements accompanying such products and services. Nothing herein should be construed as constituting an additional warranty. HP shall not be liable for technical or editorial errors or omissions contained herein.

The information contained herein is subject to change without notice.

### Restricted Rights Legend

Confidential computer software. Valid license from HP required for possession, use or copying. Consistent with FAR 12.211 and 12.212, Commercial Computer Software, Computer Software Documentation, and Technical Data for Commercial Items are licensed to the U.S. Government under vendor's standard commercial license.

### Copyright Notice

© Copyright 2014-2015 Hewlett-Packard Development Company, L.P.

### Trademark Notices

Adobe® is a trademark of Adobe Systems Incorporated.

Microsoft® and Windows® are U.S. registered trademarks of the Microsoft group of companies.

Java is a registered trademark of Oracle and/or its affiliates.

### Acknowledgements

This product includes software developed by the Apache Software Foundation (<http://www.apache.org/>).

This product includes software developed by the OpenSSL Project for use in the OpenSSL Toolkit (<http://www.openssl.org/>)

This product includes cryptographic software written by Eric Young ([ey@cryptsoft.com](mailto:ey@cryptsoft.com))

This product includes software written by Tim Hudson ([tjh@cryptsoft.com](mailto:tjh@cryptsoft.com))

This product includes software developed by the Apache Software Foundation (<http://www.apache.org/>).

## Documentation Updates

The title page of this document contains the following identifying information:

- Software Version number, which indicates the software version.
- Document Release Date, which changes each time the document is updated.
- Software Release Date, which indicates the release date of this version of the software.

To check for recent updates or to verify that you are using the most recent edition of a document, go to: <http://h20230.www2.hp.com/selfsolve/manuals>

This site requires that you register for an HP Passport and sign in. To register for an HP Passport ID, go to: <http://h20229.www2.hp.com/passport-registration.html>

Or click the **New users - please register** link on the HP Passport login page.

You will also receive updated or new editions if you subscribe to the appropriate product support service. Contact your HP sales representative for details.

## Support

Visit the HP Software Support Online web site at: <http://www.hp.com/go/hpsoftwaresupport>

This web site provides contact information and details about the products, services, and support that HP Software offers.

HP Software online support provides customer self-solve capabilities. It provides a fast and efficient way to access interactive technical support tools needed to manage your business. As a valued support customer, you can benefit by using the support web site to:

- Search for knowledge documents of interest
- Submit and track support cases and enhancement requests
- Download software patches
- Manage support contracts

- Look up HP support contacts
- Review information about available services
- Enter into discussions with other software customers
- Research and register for software training

Most of the support areas require that you register as an HP Passport user and sign in. Many also require a support contract. To register for an HP Passport ID, go to:

**<http://h20229.www2.hp.com/passport-registration.html>**

To find more information about access levels, go to:

**[http://h20230.www2.hp.com/new\\_access\\_levels.jsp](http://h20230.www2.hp.com/new_access_levels.jsp)**

**HP Software Solutions Now** accesses the HPSW Solution and Integration Portal Web site. This site enables you to explore HP Product Solutions to meet your business needs, includes a full list of Integrations between HP Products, as well as a listing of ITIL Processes. The URL for this Web site is **<http://h20230.www2.hp.com/sc/solutions/index.jsp>**

# Contents

Chapter 1: Introduction .....	5
Chapter 2: Installing HP vPV .....	6
Prerequisites .....	6
Deploy the HP vPV Virtual Appliance .....	7
Upgrading HP vPV from Earlier Versions to HP vPV 2.20 .....	8
Upgrading HP vPV using the Virtual Appliance .....	8
Verify the Upgrade .....	11
Chapter 3: Accessing the HP vPV interface .....	12
Adding Data Sources .....	12
Chapter 4: License Management .....	14
User Interface .....	14
Types of Licenses .....	15
Importing Licenses .....	20
Chapter 5: Troubleshooting .....	22
Chapter 6: HP vPV Community .....	27
Send Documentation Feedback .....	28

# Chapter 1: Introduction

HP Virtualization Performance Viewer (HP vPV) is a web-based analysis and visualization tool that analyzes the performance trends of elements in virtualized environments. It enables virtualization monitoring by providing an overview of the environment, near-real-time and historical data analysis and triaging using an interactive dashboard. It also enables monitoring for cloud and hypervisor environments. HP vPV helps you visualize performance data for elements in the context of each other to rapidly analyze bottlenecks. HP vPV provides performance monitoring, graphing, and reporting in a single interface. You can use HP vPV to do the following:

## Performance Monitoring

- **Dashboard** provides quick and easy navigation to other HP vPV views.
- **Treemap** provides the graphical representation of the health of the environment. You can also identify and view the problems at a glance. Treemap provides quick analysis of the entities such as Datacenter, Host, or VMs.
- **Workbench** helps you to visualize and triage the performance of the monitored resources. You can troubleshoot problems that occurred in the past for a specific time period. You can draw and view graphs with the help of available metrics. Additionally, you can save frequently used graphs as favorites.
- **Alerts** help you to identify and troubleshoot the problems generated in your virtualized environment.
- **Real Time Guest Drill Down** detects overloads in the environment. You can drill down to determine the performance overload issue in VMs.

## Capacity Analysis and Optimization

- **Capacity Overview** provides right size recommendation of the resources in the environment.
- **Placement** provides suggestions for adding new VMs based on available or reclaimable capacity.
- **Forecast** helps to project future capacity utilization levels of different resources for a predefined time period. Using the Forecast feature, you can determine the Days to Capacity information to make optimal allocation and placement.
- **Modeler** helps to determine the impact of adding or deleting resources in your environment. You can estimate the future capacity utilization to proactively plan your hardware requirements.

## Chapter 2: Installing HP vPV

HP vPV is available as a virtual appliance for easy deployment in the VMware vCenter. You can use the VMware vSphere client interface to deploy the HP vPV virtual appliance.

You can download the HP vPV virtual appliance from: <http://www.hp.com/go/vpv>. You can install the HP vPV virtual appliance using the **Deploy OVF Template** functionality of the VMware vSphere client. To log on to the virtual appliance, the username is **root** and password is **vperf\*viewer**. For more information, see the *VMware documentation*.

### Prerequisites

HP vPV requires the following ports to be open on the firewall:

Port	Protocol	Description
8081	HTTP	To make HP vPV accessible from the remote browser, if there is a firewall on the system where HP vPV is installed.
8444	HTTPS	To access HP vPV in Hypertext Transfer Protocol Secure mode.
5480, 5488, and 5489	HTTPS	To access the Virtual Appliance Management Interface (VAMI).
383	HTTPS	For HP vPV internal communication process.
5433	HTTPS	For HP vPV database requirements (HP Vertica).
443	HTTPS	To ensure data collection from VMware vSphere targets.
5671	HTTPS	To ensure data collection from HP OneView targets.
135	TCP	To ensure data collection from Hyper-V targets. Port between Windows proxy system and Hyper-V host should be open on Hyper-V host.
8100	HTTPS	To ensure data collection from SCVMM targets. Port between Windows proxy system and SCVMM host should be open on the SCVMM host.
22	SSH	To ensure data collection from KVM and Xen targets.
35357 (Admin), 8774 (Nova)	HTTPS	To ensure data collection from OpenStack targets.

## Deploy the HP vPV Virtual Appliance

HP vPV is available as a Virtual Appliance for easy deployment in vCenter. You can use the VMware vSphere Client user interface to deploy the virtual appliance.

The supported VMware vCenter Server versions are 5.0, 5.1, 5.5, and 6.0.

To deploy the HP vPV virtual appliance, follow these steps:

1. Open VMware vSphere Client.
2. Type the credentials and click **Login**.
3. Select **File > Deploy OVF Template**. The **Deploy OVF Template** window opens.
4. Click **Browse** to browse to the location where you have saved the HP vPV virtual appliance file.
5. Click **Next**. The window shows the details of virtual appliance.
6. Click **Next**. The End User License Agreement details appear.
7. Click **Accept** and then click **Next**.
8. Type a name for the virtual appliance in the **Name** field.
9. Select where to deploy the virtual appliance from the **Inventory Location** tree. Click **Next**.
10. Select the host or cluster where you want the virtual appliance to run. Click **Next**.
11. Select the specific host where to run the virtual appliance. Click **Next**.
12. Select the storage location where you want to store the virtual machine files. Click **Next**.
13. Select the disk format in which you want to store the virtual disks. Click **Next**.
14. Type the required Networking Properties and click **Next**. The window shows the details of the deployment.
15. Select the **Power on after deployment** check box.
16. Click **Finish**. The deployment task starts. After deployment, the virtual appliance name appears in the tree in the VMware vSphere Client user interface.

**Note:** For more information, see the VMware documentation. The steps are subject to change based on VMware.

### Logging in to the Virtual Appliance

You can log in to the HP vPV Virtual Appliance using the username as **root**. The default password is **vperf\*viewer** and it is recommended to change the password after logging in.

Here is a [short video](#) on deploying the HP vPV Virtual Appliance and getting started with HP vPV.

## Upgrading HP vPV from Earlier Versions to HP vPV 2.20

You can upgrade HP vPV to version 2.20 only from versions 2.01 and 2.10. The following table lists the supported upgrade scenarios:

Upgrade Scenario	Procedure
Upgrade HP vPV from version 2.10 to version 2.20	You can upgrade to HP vPV 2.20 in the following way: <ul style="list-style-type: none"><li>• <a href="#">Upgrading HP vPV using the Virtual Appliance</a></li></ul>
Upgrade HP vPV from version 2.01 to version 2.20	You can upgrade to HP vPV 2.20 in the following way: <ul style="list-style-type: none"><li>• <a href="#">Upgrading HP vPV using the Virtual Appliance</a></li></ul>

**Note:** You can upgrade HP vPV *only* from version 2.01 and 2.10 to 2.20. Upgrading HP vPV takes a significant amount of time. You cannot directly upgrade HP vPV from versions 1.00, 1.10, 1.20, or 2.00 to version 2.20. Also, make sure that you take a snapshot of HP vPV 2.01 or 2.10 machine before upgrading to 2.20 as rollback is not supported.

## Upgrading HP vPV using the Virtual Appliance


If you already have an earlier version of HP vPV deployed on the virtual appliance and want to upgrade to version 2.20, you can do it in the following two ways:

- ["Using CDROM Updates \(Using .iso\)"](#)
- ["Using Specified Repository \(Using .zip\)"](#)

### Using CDROM Updates (Using .iso)

1. Log on to VMware vSphere Client.
2. In the left tree pane, select the HP vPV machine that is to be upgraded.




3. Click the **Connect/disconnect CD/DVD devices of the virtual machine**  icon. Select **CD/DVD drive1**.
4. Click **Connect to ISO image on local disk**. Windows Explorer appears.
5. Select the HPPV\_VA\_2.20.xxx\_UPDATE.iso file. Click **Open**.
6. In the HP vPV interface, click the **Settings** icon.
7. Launch the HP vPV Virtual Appliance Management web interface using the **Launch vPV Virtual Appliance Management** link.
8. Log on to the HP vPV Virtual Appliance using the username as **root**. The default password is **vperf\*viewer**.
9. Click **Update** tab. The **Update Status** page appears.
10. Click **Settings**. The **Update Settings** page appears.
11. In the **Update Repository** section, select **Use CDROM Updates**.
12. Click **Status**. The **Update Status** page appears.
13. Click **Check Updates**. The available updates appear.
14. Select the update and click **Install Updates**. The upgrade process begins.
15. After the upgrade process is complete, 'HP vPV 2.20 upgrade has been successfully completed.' message appears.
16. Log on to the HP vPV machine where version 2.20 has been installed.
17. Go to the command prompt and run the following commands to update the OpenSSL software used by VMware on the HP vPV machine:

```
yes | cp -f /usr/lib64/libssl.so.1.0.1e /opt/vmware/lib/libssl.so.0.9.8  
yes | cp -f /usr/lib64/libssl.so.1.0.1e /opt/vmware/lib/libssl.so.0.9.8r  
yes | cp -f /usr/lib64/libcrypto.so.1.0.1e /opt/vmware/lib/libcrypto.so.0.9.8  
yes | cp -f /usr/lib64/libcrypto.so.1.0.1e /opt/vmware/lib/libcrypto.so.0.9.8r  
  
/etc/init.d/vami-sfcb restart  
  
/etc/init.d/vami-lighttpd restart
```

The OpenSSL software is updated with the latest updates.

### Using Specified Repository (Using .zip)

1. Download and unzip HPPV\_VA\_2.20.xxx\_UPDATE.zip in the Web folder at the server (Web or FTP) location.
2. In the HP vPV interface, click the **Settings**  icon.
3. Launch the HP vPV Virtual Appliance Management web interface using the using the **Launch vPV Virtual Appliance Management** link.
4. Log on to the HP vPV Virtual Appliance using the username as **root**. The default password is **vperf\*viewer**.
5. Click **Update** tab. The **Update Status** page appears.
6. Click **Settings**. The **Update Settings** page appears.
7. In the **Update Repository** section, select **Use Specified Repository**.
8. In the **Repository URL** box, type the server (Web or FTP) location where the update file was unzipped.
9. In the **Username** and **Password** box, type the User name and Password, if any.
10. Click **Save Settings**.
11. Click **Status**. The **Update Status** page appears.
12. Click **Check Updates**. The available updates appear.
13. Select the update and click **Install Updates**. The upgrade process begins.
14. After the upgrade process is complete, 'HP vPV 2.20 upgrade has been successfully completed.' message appears.
15. Log on to the HP vPV machine where version 2.20 has been installed.
16. Go to the command prompt and run the following commands to update the OpenSSL software used by VMware on the HP vPV machine:

```
yes | cp -f /usr/lib64/libssl.so.1.0.1e /opt/vmware/lib/libssl.so.0.9.8
yes | cp -f /usr/lib64/libssl.so.1.0.1e /opt/vmware/lib/libssl.so.0.9.8r
yes | cp -f /usr/lib64/libcrypto.so.1.0.1e /opt/vmware/lib/libcrypto.so.0.9.8
yes | cp -f /usr/lib64/libcrypto.so.1.0.1e /opt/vmware/lib/libcrypto.so.0.9.8r
/etc/init.d/vami-sfcb restart
/etc/init.d/vami-lighttpd restart
```

The OpenSSL software is updated with the latest updates.

**Note:** The VAMI web server configuration gets modified while upgrading a previous version of HP vPV to the latest version. The original configuration gets backed up before the modification. If you want to revert to the previous VAMI configuration, perform the following steps:

1. Log on to the HP vPV virtual appliance as root.
2. Run the following commands:

```
cp /opt/vmware/etc/lighttpd/lighttpd.conf.vPV cp  
/opt/vmware/etc/lighttpd/lighttpd.conf  
  
/etc/init.d/vami-lighttp restart
```

## Verify the Upgrade

You can verify the upgrade to HP vPV version 2.20 by performing either of the following:

- In the HP vPV interface, go to the Help icon and click **About HP vPV**. A dialog box appears with the version information.
- Verify the version by running the following command at the command prompt:

```
pv version
```

**Note:** After the upgrade, it is recommended to check the status of HP vPV processes using the following command:

```
/opt/OV/bin/ovc
```

If any of the processes are not running, run the following command to restart the processes:

```
pv restart
```

## Chapter 3: Accessing the HP vPV interface

After HP vPV is installed successfully, access the HP vPV interface using one of the following URL:

**https://<system\_name>:<port\_number>/PV**

In this instance,

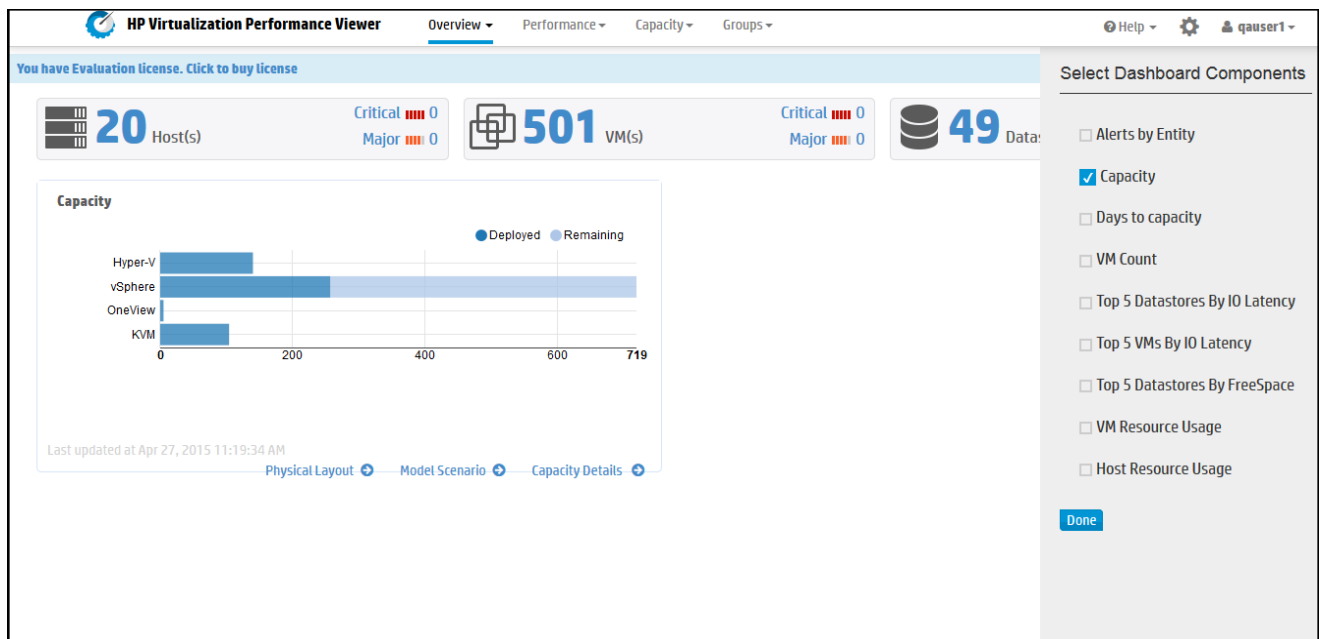
<system\_name> is the IP address or host name of the HP vPV server.

<port\_number> is the port number on which HP vPV is configured. The default port number is 8444.

**PV** is case sensitive.

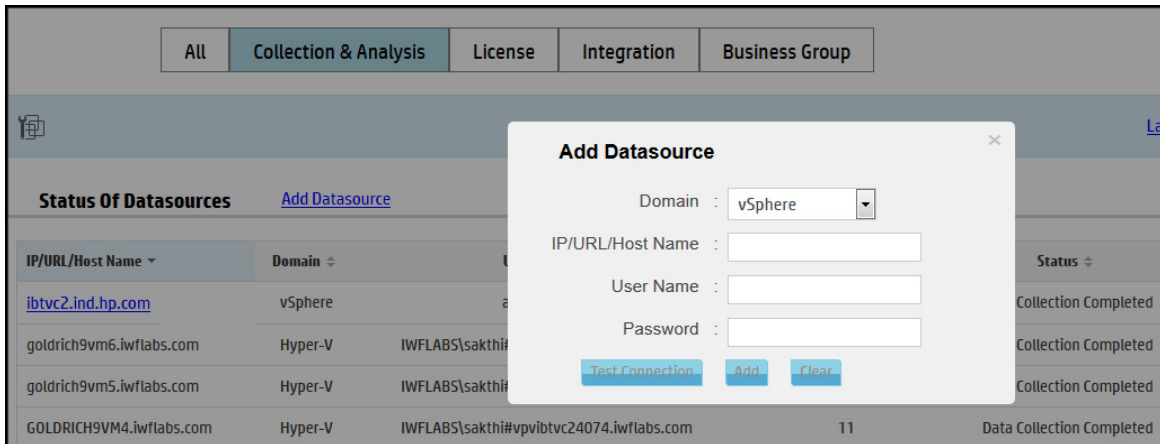
**Note:** If you access HP vPV using the HTTP protocol ( **http://<system\_name>:<port\_number>/PV**), you are automatically redirected to the secure HP vPV URL (**https://<system\_name>:<port\_number>/PV**).

HP vPV Interface appears as:



## Adding Data Sources

When adding datasources in HP vPV, go to **Settings > Collection & Analysis**. Provide the details of the datasources that HP vPV must monitor.



HP vPV supports the following data sources:

- VMware vCenter
- OneView
- Microsoft SCVMM
- Hyper-V
- KVM
- Xen
- Physical Server
- OpenStack
- AWS

For more information on adding datasources, open **Collection & Analysis** from **Settings** page and click **Help** or see *Virtualization Performance Viewer Online Help*. This opens the context-sensitive help for the Collection & Analysis.

## Chapter 4: License Management

After you install HP vPV, you can purchase the appropriate licenses based on your business requirements. These licenses enable you to access all the features of the product. To purchase the respective license, click **You have Evaluation/Community license. Click to buy license link**. The link navigates to the **Buy License** page. Enter your details in the **Contact Me** tab and click **Submit**. Make sure email client is configured in your browser.

To access the License option on the HP vPV user interface:

1. Log on to the HP vPV user interface.
2. Click the **Settings** icon.

The Settings page appears.

3. In the Settings page, click the **License** option.

The License page appears.

The License page provides information about your HP vPV licenses. You can also use this tab to start using your Evaluation License as well as import a HP vPV license. For more information on importing licenses, see "[Importing Licenses](#)".

**Note:** If you install an Express license on the HP vPV server which uses a Community license, then the Express license overrides the Community license.

If you want to retain the Community license, create a separate HP vPV server to install the Express license.

For more information on the difference between the licenses and the features available, see "[Types of Licenses](#)".

## User Interface

The following table lists the sections available in the License option.

Section	Description
License Status	<p>The License Status section lists the following information about your current HP vPV license:</p> <ul style="list-style-type: none"> <li>• Maximum number of OS instances that are provided by the active licenses</li> <li>• Number of OS instances that are currently being monitored by the active licenses</li> <li>• Data Retention</li> <li>• If you have a Server Instance License enabled, you can see the total Server Instance capacity, the current Server Instance Count, and the OS instances that are covered by the Server license.</li> <li>• License alert threshold</li> </ul>
Installed License List	<p>The Installed Licenses List section lists the following information regarding the active and all installed licenses for HP vPV.</p> <ul style="list-style-type: none"> <li>• Type of license installed</li> <li>• Date of license expiry</li> </ul>

**Note:** The number of OS instances denote only the VMs and hosts.

## Types of Licenses

HP vPV offers the following licenses: Community, Express, Premium, Evaluation, Monitoring Only, and Server Instance Licenses.

**Note:** The maximum number of OS instances that can be monitored by a Community license is 25. The number of OS instances denote only the VMs and hosts. HP vPV recommends monitoring up to 6000 OS instances using Express, Premium, and Evaluation license. However, larger configurations can be supported. For more information, see the HP vPV Sizing Guide. The Monitoring Only license supports unlimited number of OS instances.

The following table lists the available features for the HP vPV Licenses:

Feature	Community License	Express License	Premium License	Evaluation License	Monitoring License	Server License
Data Retention	Up to 24 hours	90 days	90 days	60 days	8 Days	90 days

Feature	Community License	Express License	Premium License	Evaluation License	Monitoring License	Server License
License Entitlement Period	Perpetual	Perpetual/Term	Perpetual/Term	60 days	Perpetual	Perpetual
Enterprise Directory Integration	No	Yes	Yes	Yes	No	Yes
Reports	Yes	Yes	Yes	Yes	No	Yes
HP OM, HP OMi, HP PM and HP BSM Integration	No	Yes	Yes	Yes	Yes	Yes
Monitoring	No	Yes	Yes	Yes	Yes	Yes
HP CSA Integration	No	No	Yes	Yes	No	Yes
Business Grouping	No	No	Yes	Yes	No	Yes
HP OneView Integration	No	No	Yes	Yes	No	Yes
Monitoring Physical Servers	No	No	Yes	Yes	No	Yes
Guest Operating System drill down for advanced troubleshooting	No	No	Yes	Yes	No	Yes
Current Capacity Reports (Only for VMware™ vSphere, Microsoft™ HyperV, and KVM)	No	No	Yes	Yes	No	Yes



Feature	Community License	Express License	Premium License	Evaluation License	Monitoring License	Server License
Best-fit Capacity Optimization (Only for VMware™ vSphere, Microsoft™ HyperV, and KVM)	No	No	Yes	Yes	No	Yes
Virtual Machine Placement (Only for VMware™ vSphere, Microsoft™ HyperV, and KVM)	No	No	Yes	Yes	No	Yes
Capacity Demand Forecast (Only for VMware™ vSphere, Microsoft™ HyperV, and KVM)	No	No	Yes	Yes	No	Yes
Alerting (Only for VMware™ vSphere, Hyper-V, and KVM)	No	Yes	Yes	Yes	No	Yes
Capacity Modeler (Only for VMware™ vSphere, and KVM)	No	No	Yes	Yes	No	Yes
Dashboard	No	No	Yes	Yes	No	Yes

**Note:** The number of OS instances denote only the VMs and hosts.

All product features are available for the Evaluation License. The only difference between the Evaluation License and Premium License is the validity.

### Evaluation License

After installing HP vPV, by default, your active license will be Community License. To start using HP vPV in evaluation mode, click **Start Evaluation**. The page refreshes and displays information regarding your Evaluation License.

After the Evaluation License expires (after 60 days), the system changes your license automatically to Community License.

You can enable the Evaluation License from the user interface and from the command line.

#### From User Interface:

To enable Evaluation License from the user interface, follow these steps:

1. Go to the **License** option in the **Settings** page.
2. Click the **Start Evaluation** link.

#### From Command Line:

To enable Evaluation License from the command line, follow these steps:

1. On the HP vPV machine, log on as a root user.
2. Run the following command to activate the Evaluation license:

```
pv starteval
```

**Note:** Data collection works only when the sum of instances from all data sources is less than or equal to the maximum instance capacity of the license. If the total instance count exceeds the maximum instance capacity of the license, then the data collection stops for all the data sources. For example, if you install a Premium license for 100 instances, and try to connect two hosts with 60 instances each, then the collection fails for both the hosts.

### Monitoring Only License

When HP vPV is integrated with HP Operations Manager/HP Operations Manager i (HPOM/OMi) and you want to use HP vPV's monitoring capabilities only, you can enable the Monitoring Only License. With the Monitoring Only license, you can only use limited set of features in the **Settings** option of HP vPV. All the other HP vPV features are disabled.

You can enable the Monitoring License from the user interface and from the command line.

#### From User Interface:

To enable Monitoring License from the user interface, follow these steps:

1. Go to the **License** option in the **Settings** page.
2. Click the **Start Monitoring Only** link.

#### From Command Line:

To enable Monitoring License from the command line, follow these steps:

1. On the HP vPV machine, log on as a root user.
2. Run the following command to activate the Monitoring Only license:

```
pv startmonitoringonly
```

The Evaluation, Premium, and Express licenses override the existing Monitoring license. After the end of respective license entitlement periods, HP vPV reverts to the Monitoring license features.

Similarly, if you are currently using HP vPV in evaluation mode, and you enable the Monitoring License, all the features would be available only for the evaluation period. After the Evaluation license validity expires, the Monitoring license continues to be active.

#### Server License

You can enable the HP vPV Server license to monitor the servers managed by HP OneView. A single Server license instance enables you to monitor all the OS instances running on the server covered by the Server license. A Server license is similar to the Premium license in terms of feature availability.

**Note:** The maximum number of valid Server instance licenses cannot exceed the maximum servers managed by HP OneView.

The following table summarizes the behavior of HP vPV in the following license scenarios:

Currently Active License	License Applied	Behavior
Community/Evaluation/Express	Server License	<p>The Server license overrides the existing license. The total licensed instance count equals the OS instances covered by the Server license.</p> <p><b>Note:</b> The data collection will stop if there are OS instances that are running on the servers not covered by the Server license. To start the data collection, you can install additional licenses with sufficient capacity.</p>

Currently Active License	License Applied	Behavior
Premium	Server License	<p>The Server license co-exists with the Premium license. The total licensed instance count equals the OS instances covered by the Premium and Server license.</p> <div style="background-color: #f0f0f0; padding: 5px;"> <p><b>Note:</b> The OS instances that are running on the servers covered by the Server license will be deducted from the current OS instance count. This results in additional OS instance capacity.</p> </div>
Server License	Premium	The Server license co-exists with the Premium license. The total licensed instance count equals the OS instances covered by the Premium and Server license.
Server License	Community/Evaluation/Express	Not supported.

**Note:** If the number of servers managed by HP OneView exceeds the Server license capacity, the servers are chosen based on the number of instances associated with them. The servers having the highest number of instances are automatically selected to be monitored by the Server license.

## Importing Licenses

After you purchase a license, you must import it before you start using HP vPV.

To import licenses for HP vPV, follow these steps:

1. Go to the **License** option in the **Settings** page.
2. In the **License Status** section, click the **Import License** link.  
 The **Manage License** page appears.
3. Type your license key in the **License Key** field of the Manage License section.
4. Click **Import License**. The **Installed License List** section refreshes to display the details of the

license imported.

To clear the license key typed in, click **Reset**.

## Chapter 5: Troubleshooting

The following section details how to troubleshoot HP vPV:

### Vertica database is filled to near capacity due to the increase in the log file size.

Symptom	The Vertica database is filled to near capacity due to the increase in the log file size.
Causes	Vertica database consolidates and retains the log data in a <b>.gz</b> file daily. By default, this process (called 'rotate') continues for 52 weeks.
Resolution	<p>To create more space on the Vertica database implement any one of the two solutions below:</p> <p><b>Solution 1</b></p> <ol style="list-style-type: none"><li>1. Go to <b>/opt/vertica/config/logrotate/</b>.</li><li>2. Open the <b>pv</b> file.</li><li>3. In the pv file, under <b># and keep for 52 weeks</b> change the value of <b>rotate</b> from 52 to the number of weeks for which you want to save the rotated log files.</li></ol> <p>For example: <b>rotate 3</b></p> <p>In this instance, the Vertica database will retain the <b>.gz</b> files for 3 weeks.</p> <ol style="list-style-type: none"><li>4. Repeat <b>step 3</b> for all instances of <b># and keep for 52 weeks</b>.</li><li>5. Save and close the file.</li></ol> <p><b>Solution 2</b></p> <ol style="list-style-type: none"><li>1. Login as a root user.</li><li>2. Run the following commands on the HP vPV server:</li></ol> <pre>cd /opt/vertica/bin  ./admintools -t logrotate -d pv -r weekly -k &lt;number_of_weeks&gt;</pre> <p>where, <i>&lt;number_of_weeks&gt;</i> is the number of weeks for which you want to retain the rotated logs.</p>

### Unable to Access HP vPV

Symptom	Unable to access HP vPV through the default network port settings.
---------	--

Causes	<ul style="list-style-type: none"> <li>Your system has <b>ovTomcatB</b> configured to run with the non-root user or non-local system account privileges and you have HP vPV installed on such a system.</li> <li>You cannot access HP vPV using the default http (8081) or https (8444) ports if these ports are in use by other applications.</li> </ul>
Resolution	<ul style="list-style-type: none"> <li>Check if <b>ovTomcatB</b> is configured to run with the non-root user or non-local system account privileges. If so, modify the settings to run <b>ovTomcatB</b> with the Administrator or root user privileges.</li> <li>Try accessing HP vPV by using the following URL:   <code>http://&lt;IP address/system name&gt;:&lt;port number&gt;/PV</code>                       where, <i>&lt;IP address/system name&gt;</i> is the IP address or the system name of the HP vPV server and <i>&lt;port number&gt;</i> is the port number of the HP vPV server.                       If the HP vPV Home page does not appear, check if the default ports are in use.</li> <li>To change the port settings, follow these steps:                         <ol style="list-style-type: none"> <li>Run the following command at the command prompt to change the port numbers for HTTP, HTTPS, and Shutdown Ports:  <code>&lt;bin_dir&gt;ovconfchg -ns NONOV.TomcatB -set HTTPPort &lt;port number&gt;</code>   <code>&lt;bin_dir&gt;ovconfchg -ns NONOV.TomcatB -set HTTPSPort &lt;port number&gt;</code>   <code>&lt;bin_dir&gt;ovconfchg -ns NONOV.TomcatB -set ShutdownPort &lt;port number&gt;</code> </li> <li>Restart HP vPV.</li> </ol> </li> </ul>

#### Unable to connect to HP vPV server through HTTPS protocol

Symptom	HP vPV is unable to connect to the server through secure communication (HTTPS) protocol.
Cause	The connection times out when HP vPV is not able to connect through the secure client in the default timeout interval of one second.
Resolution	Use the parameter <b>SECURE_CLIENT_CONNECT_TIMEOUT</b> to adjust the timeout interval to connect to HP vPV server depending on your Internet connectivity or infrastructure setup.

#### Deployment of HP vPV fails

Symptom	The deployment of the HP vPV Virtual Appliance fails.
Cause	This may happen when the time on the ESX server is set to a future time.
Resolution	Ensure that the time on the ESX server is set correctly.

### Unable to view content on HP vPV home page

Symptom	The HP vPV Home page does not display anything except the header.
Cause	JavaScript is not supported or Adobe® Flash Player is not installed in your browser. Adobe® Flash Player version 10.3 is the minimum required version.
Resolution	<p>Install Adobe® Flash Player and enable JavaScript support for the Internet Explorer (IE) or Mozilla Firefox browser by adding HP vPV to your list of Trusted Sites.</p> <ul style="list-style-type: none"><li>• To add HP vPV Web server URL to a trusted site, perform the following steps:  For IE browser<ol style="list-style-type: none"><li>a. From the Tools menu, click <b>Internet Options</b>. The Internet Options pop-up window appears.</li><li>b. Click <b>Security</b> tab.</li><li>c. Select the <b>Trusted Sites</b> icon.</li><li>d. Click <b>Sites</b>. The Trusted Sites pop-up window appears.</li><li>e. Type the HP vPV web server URL and click <b>Add</b>. The typed URL appears in the list of trusted sites.</li><li>f. Click <b>Close</b>.</li><li>g. Click <b>OK</b>.</li><li>h. Restart the browser.</li></ol> For Mozilla Firefox browser<ol style="list-style-type: none"><li>a. From the <b>Edit</b> menu, click <b>Preferences</b>. The Options pop-up window appears.</li><li>b. Click <b>Privacy</b> tab.</li><li>c. Click <b>Exceptions</b>.</li><li>d. Type the HP vPV web server URL in the box under Address of web site.</li><li>e. Click <b>Allow</b>.</li><li>f. Click <b>Close</b>.</li><li>g. Click <b>OK</b>.</li><li>h. Restart the browser.</li></ol></li></ul>



	<ul style="list-style-type: none"> <li>• If Adobe® Flash Player is not installed in your browser, HP vPV Home page does not appear. The browser displays a message stating that you must Install Adobe Flash Player to view the HP vPV Home Page. Click the message to download Adobe® Flash Player.</li> <li>• If JavaScript is not enabled in your browser, HP vPV Home page does not appear in the IE browser even after adding it as a trusted site. The browser displays a message stating that JavaScript is not enabled in your browser and you must enable JavaScript to view the page.</li> </ul> <p>To enable JavaScript support, perform the following steps:</p> <p>For IE browser:</p> <ol style="list-style-type: none"> <li>a. From the <b>Tools</b> menu, click <b>Internet Options</b>. The Internet Options pop-up window appears.</li> <li>b. Click the <b>Security</b> tab. Check if the security level in your browser settings is set to High.</li> <li>c. Make sure the <b>Trusted Sites</b> icon is selected and click <b>Custom Level</b>. The Security Settings pop-up window appears.</li> <li>d. Scroll down to Scripting section and select the <b>Enabled</b> option under <b>Active Scripting</b>.</li> <li>e. Click <b>OK</b>.</li> <li>f. Click <b>Apply</b>.</li> </ol> <p>For Mozilla Firefox browser:</p> <ol style="list-style-type: none"> <li>a. From the Tools menu, click <b>Options</b>.</li> <li>b. Click <b>Content</b>.</li> <li>c. Select the <b>Enable JavaScript</b> check box.</li> <li>d. Click <b>OK</b>.</li> </ol>
--	---

**HTTP Status 404 - /PV Error**

Symptom	When trying to access HP vPV, you get the HTTP Status 404 - /PV Error message.
Cause	The message appears if the <INSTALLDIR>/www/webapps/PV directory is empty.
Resolution	Extract the Perf.war file again from <Install_Dir>/newconfig/PV to <Install_dir>/www/webapps/PV. Run the command <i>pv deploywar</i> .

**What are the log files available with HP vPV?**

The following table lists the log files available with HP vPV:

Component	Description	Location
pvcd (PV Collection Daemon)	<p>pvcd daemon uses XPL tracing mechanism. A default pvcdXPL.itc (trace configuration) is available in /opt/OV/support directory.</p> <p>To start the tracing, run                      /opt/OV/support/ovtrccfg -app pvcd -cf                      /opt/OV/newconfig/conf/xpl/trc/pvcdXPL.itc                      The XPL trace files are present at /tmp/pvcd_*.trc.</p> <p>To stop tracing, run                      /opt/OV/support/ovtrccfg -app pvcd -off</p>	<p>If tracing is enabled, /tmp/ directory contains the trace files (use - ls /tmp/pvcd_*.trc)</p>
	<p>pvcd and pvconfig tools log important status and error messages, if any, in System.txt.</p>	<p>/var/opt/OV/log/System.txt</p>
Collectors	<p>vCenter and OpenStack collector status log file                      /var/opt/OV/log/status.virtserver</p>	<p>/var/opt/OV/log/status.virtserver</p>
	<p>KVM collector status log file</p>	<p>/var/opt/OV/log/status.kvm</p>
	<p>XEN collector status log file</p>	<p>/var/opt/OV/log/tmp/status.xen</p>
Database Transaction	<p>Vertica catalog file to view database transactions</p>	<p>/var/opt/OV/databases/pv/catalog/pv/v_pv_node0001_catalog/vertica.log</p>
User Interface	<p>Local trace and log messages are logged in ovpmtrace.0.txt and ovpm.0.log</p>	<p>/var/opt/OV/log</p>

## Chapter 6: HP vPV Community

You can get HP vPV related information from the HP vPV Community through the following:

### **HP vPV Blogs**

You can get more information and use cases for HP vPV in [HP vPV Blog](#)

### **HP vPV Videos**

You can view HP vPV demonstration videos and tutorials in [HP vPV Videos](#).

### **HP vPV Community Forum**

You can access the HP vPV community forum to get help and ask any questions that you may have. You can address any queries regarding HP vPV in the [HP vPV forum](#).

## Send Documentation Feedback

If you have comments about this document, you can [contact the documentation team](#) by email. If an email client is configured on this system, click the link above and an email window opens with the following information in the subject line:

**Feedback on Getting Started Guide for Virtual Appliance (Virtualization Performance Viewer 2.20)**

Just add your feedback to the email and click send.

If no email client is available, copy the information above to a new message in a web mail client, and send your feedback to [docfeedback@hp.com](mailto:docfeedback@hp.com).

We appreciate your feedback!