

HP Service Manager

Software Version: 9.35

For the supported Windows® and UNIX® operating systems

Applications Upgrade Guide (from HP Service Manager 9.2x)

Document Release Date: April 2015
Software Release Date: April 2015



Legal Notices

Warranty

The only warranties for HP products and services are set forth in the express warranty statements accompanying such products and services. Nothing herein should be construed as constituting an additional warranty. HP shall not be liable for technical or editorial errors or omissions contained herein.

The information contained herein is subject to change without notice.

Restricted Rights Legend

Confidential computer software. Valid license from HP required for possession, use or copying. Consistent with FAR 12.211 and 12.212, Commercial Computer Software, Computer Software Documentation, and Technical Data for Commercial Items are licensed to the U.S. Government under vendor's standard commercial license.

Copyright Notice

© 1994-2015 Hewlett-Packard Development Company, L.P.

Trademark Notices

Adobe® is a trademark of Adobe Systems Incorporated.

Java is a registered trademark of Oracle and/or its affiliates.

Microsoft® and Windows® are U.S. registered trademarks of Microsoft Corporation.

Oracle® is a registered US trademark of Oracle Corporation, Redwood City, California.

UNIX® is a registered trademark of The Open Group.

For a complete list of open source and third party acknowledgements, visit the HP Software Support Online web site and search for the product manual called HP Service Manager Open Source and Third Party License Agreements.

Documentation Updates

The title page of this document contains the following identifying information:

- Software Version number, which indicates the software version.
- Document Release Date, which changes each time the document is updated.
- Software Release Date, which indicates the release date of this version of the software.

To check for recent updates or to verify that you are using the most recent edition of a document, go to: <https://softwaresupport.hp.com>

This site requires that you register for an HP Passport and sign in. To register for an HP Passport ID, go to: <http://h20229.www2.hp.com/passport-registration.html>

Or click the **New users - please register** link on the HP Passport login page.

You will also receive updated or new editions if you subscribe to the appropriate product support service. Contact your HP sales representative for details.

Support

Visit the HP Software Support Online website at: <https://softwaresupport.hp.com>

This website provides contact information and details about the products, services, and support that HP Software offers.

HP Software online support provides customer self-solve capabilities. It provides a fast and efficient way to access interactive technical support tools needed to manage your business. As a valued support customer, you can benefit by using the support website to:

- Search for knowledge documents of interest
- Submit and track support cases and enhancement requests
- Download software patches
- Manage support contracts
- Look up HP support contacts
- Review information about available services
- Enter into discussions with other software customers
- Research and register for software training

Most of the support areas require that you register as an HP Passport user and sign in. Many also require a support contract. To register for an HP Passport ID, go to:

<http://h20229.www2.hp.com/passport-registration.html>

To find more information about access levels, go to:

http://h20230.www2.hp.com/new_access_levels.jsp

HP Software Solutions Now accesses the HPSW Solution and Integration Portal website. This site enables you to explore HP Product Solutions to meet your business needs, includes a full list of Integrations between HP Products, as well as a listing of ITIL Processes. The URL for this website is <http://h20230.www2.hp.com/sc/solutions/index.jsp>

Contents

Chapter 1: Upgrade overview	7
Before you begin an upgrade	7
Server and client upgrade	7
Applications upgrade	8
Applications upgrade lifecycle	8
Upgrade phases and sub-phases	9
How does customization affect the upgrade process?	11
Upgrade Utility contents	13
Chapter 2: Planning an upgrade	15
Step 1: Identify the upgrade resources	15
Step 2: Meet the software requirements	16
Step 3: Perform a system health check	16
Step 4: Create development and test environments	17
Step 5: Develop an upgrade strategy	17
Chapter 3: Preparing for an upgrade	19
Step 1: Meet database requirements	19
Convert all tables and fields from lowercase to uppercase	19
Step 2: Purge existing upgrade files	20
Step 3: Upgrade the server and client	20
Step 4: Duplicate the production environment	20
Step 5: Update Service Manager configuration files	21
Chapter 4: Running the Upgrade Utility	24
Step 1: Load the application upgrade files	24
Step 2: Run the SQL compare utility	26
Running SQL Compare	26
Add new fields	28

Determine the correct structure	28
Step 3: Run the Upgrade Utility	29
Upgrade Utility logs and error messages	31
Chapter 5: Resolving exceptions and conflicts	34
Upgrade results	34
View the upgrade results	34
Description of upgrade results	35
Manage the upgrade result data	40
Step 1: Resolve exceptions	40
Data type mismatches	41
Fixing the FolderRights delete field	43
Handle key change failure	44
Unexpected errors	46
Step 2: Resolve conflicts	46
Standard conflict resolution process	46
Display components	47
Display application	47
Display screen records	48
Display options and display events	48
RAD applications	49
Options for resolving RAD application conflicts	50
Using the Merge tool	53
Using a third party tool to visually compare objects	58
Using the Auto Merge and Revert options	60
Using the Mass Choose Upgrade feature	60
Using the Mark as Reconciled feature	61
Step 3: Perform additional manual tasks	62
Step 4: (Optional) Modify automatically fixed data	62
Step 5: Return the system to normal operation	63
Step 6: Test the system (functional testing)	64
Step 7: Back up the system	64
Chapter 6: Creating and applying the custom upgrade	65

Step 1: Build a custom upgrade	65
Upgrade Utility logs and error messages	68
Step 2: Apply the custom upgrade to the test system	68
Upgrade Utility logs and error messages	71
Tables and records that are not upgraded by the Upgrade Utility	71
Step 3: Perform additional manual tasks	71
Step 4: Test the custom upgrade	72
Step 5: Apply the custom upgrade to the production system	73
Step 6: Clean up upgrade objects	74
Chapter 7: Troubleshooting	75
Troubleshooting: The Upgrade Utility appears to stop responding	75
Troubleshooting: The client session was terminated during an upgrade	75
Troubleshooting: Unexpected errors during an upgrade	76
Troubleshooting: Upgrade failed with a "Not enough shared memory available" error	76
Troubleshooting: Database transaction log full	76
Troubleshooting: Integrations do not work after an application upgrade	77
Troubleshooting: Automatic merge fails	77
Troubleshooting: Assignment objects are included in the custom upgrade	78
Chapter 8: Data scan option	80
Run the data scan option	80
View the data scan results	81
Null values disallowed by keys	81
Data type mismatches	82
Chapter 9: Updating languages at a later time	85
Update additional languages before creating a custom upgrade	85
Update additional languages after applying a custom upgrade	86
Glossary	87
Index	90

Send Documentation Feedback91

Chapter 1: Upgrade overview

The purpose of this guide is to describe how to upgrade your HP Service Manager 9.2x applications to HP Service Manager 9.35 applications by using the Service Manager Upgrade Utility.

Before you begin an upgrade

Before you begin an upgrade, ensure that you:

- Read through the *Upgrade Guide* to familiarize yourself with the upgrade process and all of the upgrade requirements.
- Are an experienced HP Administrator who is familiar with Service Manager.

If you do not have the administrative experience necessary to manage the upgrade, you may need assistance from your local application developers and database administrators. You can also contact HP Service Manager Customer Support for help with troubleshooting upgrade errors. For additional information and support, contact your HP sales representative.

Server and client upgrade

Make sure that you have upgraded your server and the client to the latest version before you attempt to run an application upgrade. This allows the upgrade utility to call the new functions in the latest server and client and to take full advantage of all of the application features following an upgrade. If you have deployed Knowledge Management, you must also upgrade the Knowledge Management Search Engine to the new version.

To upgrade your applications by using this Upgrade Patch, you must first perform a server and client upgrade to 9.35 platform (server and client).

- To obtain the latest client, install the client from the HP Service Manager 9.35 release, and follow the instructions in the *HP Service Manager 9.35 Interactive Installation Guide*.
- To obtain the latest server, install the HP Service Manager 9.30 server from the Service Manager 9.30 installation DVD, and then install the Service Manager 9.35 server patch. For details, see the *Service Manager 9.35 Interactive Installation Guide*.

Applications upgrade

You can upgrade your existing HP Service Manager applications to Service Manager 9.35 applications using the Upgrade Utility and resolving the differences between the two versions.

What are applications?

Applications are the Service Manager modules and their related configuration files. For example, Incident Management and Change Management are Service Manager applications.

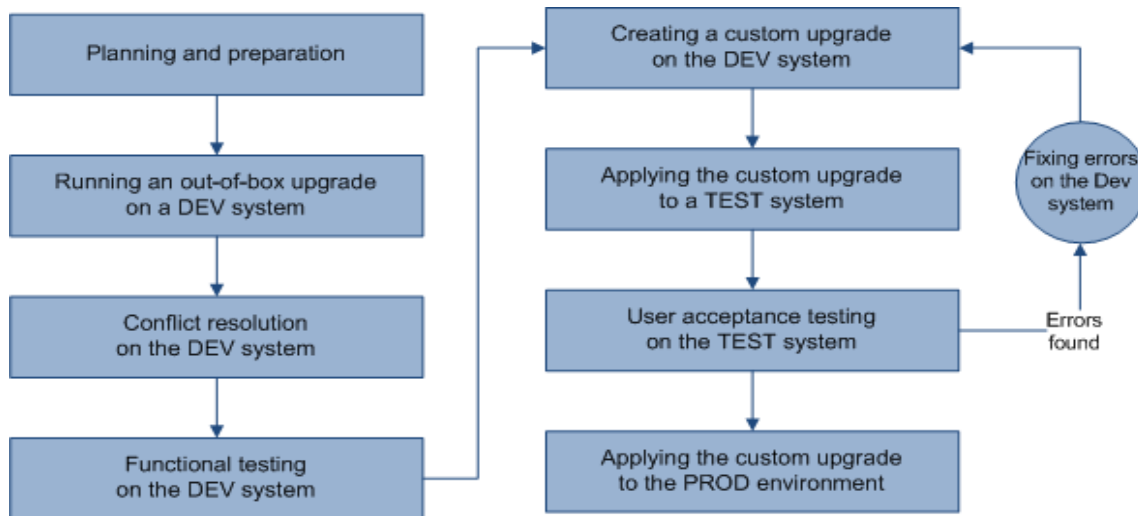
New features that require an application upgrade

Some new features provided by the release of Service Manager 9.35 require an application upgrade. These new features include the following:

- Process Designer
- Smart Analytics
- Mobile Applications
- Service Request Catalog (SRC)
- Case exchange
- Embedded Service Manager Calendar
- Service Manager Survey
- Knowledge Management SOLR search engine (provided since Service Manager 9.30)
- The Primary Key and Not Null constraints (provided since Service Manager 9.32)

Applications upgrade lifecycle

The following flow chart illustrates the lifecycle of a typical upgrade of HP Service Manager applications.



Upgrade phases and sub-phases

The following table describes the phases and sub-phases in the entire applications upgrade lifecycle. These sub-phases are logged in the upgrade log files during the upgrade. When an error occurs, the log files can help you find out during which phase and sub-phase the error occurs.

Phase	Sub-phases
Planning and preparation	<ul style="list-style-type: none"> • Load Transfer
Running an out-of-box upgrade	<ul style="list-style-type: none"> • Pre Upgrade Action Check • Pre Upgrade Action Update • Pre Upgrade Action Purge • Pre Upgrade Action • Load Upgrade File • Upgrade Dbdicts • Load Upgrading Data • Upgrade Data • Post Upgrade Action • Post Upgrade Action Prior SM930

Phase	Sub-phases
	<ul style="list-style-type: none"> • Post Upgrade Action Auto Merge • Post Upgrade Action Purge • Post Upgrade Action Update • Post Upgrade Action Notification • Post Upgrade Action Restore
Creating a custom upgrade	<ul style="list-style-type: none"> • Pre Create Action Check • Build Signatures • Build Distribution • Export Data • Transfer Data
Applying the custom upgrade	<ul style="list-style-type: none"> • Pre Upgrade Action Check • Pre Upgrade Action Update • Pre Upgrade Action Purge • Pre Upgrade Action • Load Upgrade File • Upgrade Dbdicts • Load Upgrading Data • Upgrade Data • Post Upgrade Action • Post Upgrade Action Prior SM930 • Post Upgrade Action Auto Merge

Phase	Sub-phases
	<ul style="list-style-type: none"><li data-bbox="630 300 959 327">• Post Upgrade Action Purge<li data-bbox="630 365 976 392">• Post Upgrade Action Update<li data-bbox="630 430 886 499">• Post Upgrade Action Notification<li data-bbox="630 537 980 564">• Post Upgrade Action Restore

How does customization affect the upgrade process?

The following explains how customization affects the upgrade process.

Conflicts

Object changes: The Upgrade Utility compares the objects in your database with their out-of-box versions and the corresponding objects provided from the upgrade package. The Upgrade Utility compares objects by their signatures. Each data record in HP Service Manager has a unique signature, which changes once that data record is updated. When processing object changes, the Upgrade Utility behaves as described in the following tables.

Changed object

Object in DB has been tailored?	OOB version of object matches upgrade package?	Out-of-box upgrade	Custom upgrade
Yes	No	The Upgrade Utility tries to merge the object from the upgrade package with your tailored object. If the merge is successful, the Upgrade Utility marks the new merged object as "Auto Merged." If the merge fails, Upgrade Utility marks the object as "Renamed." In both cases, the Upgrade Utility prefixes the object from the upgrade package with "NEW935," and then copies the object in your database and prefixes that object as "PRE<version_number>". For example, an object from application version 9.20.000 would be prefixed with "PRE9.20.000."	The Upgrade Utility marks the object from the upgrade package as "Forced," and then copies the object in its revision.
Yes	Yes	The Upgrade Utility keeps your local version, even if your version has been tailored and marks your local version as "Kept Customer".	The Upgrade Utility marks your local version object as "Already Current."
No	No	The Upgrade Utility overwrites the object in your database with the object from the upgrade package, and marks the object as "Upgraded."	The Upgrade Utility marks the object from the upgrade package as "Forced," and then copies the object in its revision.
No	Yes	The Upgrade Utility marks the object as "Already Current" regardless of whether this is the first upgrade or a custom upgrade.	

Added object

Object is added in ...	Behavior	Note
DB	The Upgrade Utility always keeps your local version and does nothing else.	The object in your database does not have a corresponding object from the upgrade package.
Upgrade package	The Upgrade Utility adds the object to your database and marks the object as "Added" regardless of whether this the first upgrade or a custom upgrade.	The object from the upgrade package does not have a corresponding object from your database.

Dbdict changes: The Upgrade Utility automatically adds new dbdict and merges new fields to existing dbdicts. The Upgrade Utility does not delete any existing field. For field and key changes, check "Field mapping changes" and "Key changes."

Field mapping changes: Normally the Upgrade Utility applies field mapping changes automatically, but there may be some exceptions. For example, when a length change is required, the Upgrade Utility automatically expands the length mapping. However, if the field mapping is a LOB-type change, the Upgrade Utility will not the change the type mapping. For detailed exceptions, check the except.log file after the upgrade.

Key changes: Normally the Upgrade Utility applies key changes automatically, but there may be some exceptions. For example, the Upgrade Utility automatically adds a new key and updates the existing key of the pre-upgrade out-of-box version. However, if a Unique key has been tailored, the Upgrade Utility will not apply the key change. For detailed exceptions, check the except.log file after the upgrade.

Customization during upgrade

If any tailoring changes are made to your production system, for example, by applying an application "hot fix," after you have initiated the upgrade process, it is highly recommended that you apply those same changes to the development system that is being used for conflict resolution before you create the final custom upgrade package. Or, these tailoring changes may be lost after the custom upgrade has been applied to production, and any conflict resolution that needs to be done in a production environment may slow down the production upgrade.

Upgrade Utility contents

The following table lists the files that are included in the HP Service Manager Upgrade Utility.

List of upgrade utility files

File	Contents
AppUpgVersion.txt	<p>Contains Upgrade Utility version and build number information to help you identify which application upgrade version you have available. For example:</p> <p>A version of "SC62-9.35.00xx v9.35 00xx Upgrade Build 00xx" indicates the following:</p> <ul style="list-style-type: none"> • The Upgrade Utility upgrades ServiceCenter 6.2 and later releases to Service Manager 9.35. • The Upgrade Utility version number is 9.35.00xx. • The Upgrade Utility build number for this version is 00xx.
preupg.bin	Files that allow you to access the various features of the Upgrade Utility.
transfer.bin	Files that allow for the execution of the upgrade.
sqlupgrade.unl	Files that allow you to run SQL Compare, a feature of the Upgrade Utility.
upgrade.inf	Signature information for the upgrade objects.
upgrade.str	Database dictionaries to be upgraded.
upgrade.ver	Version stamp for this upgrade.
*.dta (in the Data folder)	The data files for each table that needs to be upgraded. For example, upgradeactivityactions.dta and upgradeactivitytype.dta.
upgrade.mak	Signature definitions for the upgrade objects.
upgdbdct.dta	Temporary dbdicts needed for the SQL Compare process.

Chapter 2: Planning an upgrade

Good planning allows your upgrade to run as smoothly and quickly as possible, and helps you to avoid retracing your steps. When preparing for your upgrade, you will need to consider how long each step will take and when users need to be logged off the system so that you can schedule each phase of your upgrade.

Topics in this section include:

- ["Step 1: Identify the upgrade resources" below](#)
- ["Step 2: Meet the software requirements" on the next page](#)
- ["Step 3: Perform a system health check" on the next page](#)
- ["Step 4: Create development and test environments" on page 17](#)
- ["Step 5: Develop an upgrade strategy" on page 17](#)

Step 1: Identify the upgrade resources

Make sure that you have access to the following resources

- **Service Manager tools:** The utilities you will use most during the upgrade process include Database Manager and Forms Designer.
- **Documentation resources:** For client/server installation instructions, see the *HP Service Manager Interactive Installation Guide*. Additionally, you can obtain most Service Manager knowledge from the Service Manager 9.35 Help Center.
- **HP Software Support Online:** The [HP Software Support Online](#) web site has operating system and compatibility information, product documentation, and release notes. This site requires that you register for an HP Passport and sign-in. To register for an HP Passport ID, go to: <http://h20229.www2.hp.com/passport-registration.html>.

Step 2: Meet the software requirements

Before you start your upgrade, make sure that you meet the following HP Service Manager system requirements:

- Your RDBMS version, operating system, and client/server environment must meet all criteria listed in the Support Matrix for the target version. See the [HP Service Manager Support Matrices](#) to review the Support Matrix.
- Your existing Service Manager application release level must be HP Service Manager 9.2x.
- The Service Manager server process (sm) must have read-write access to the database.

Backups

It is highly recommended, at a minimum, that you back up the database at the following strategic points in the upgrade lifecycle:

- After applying an upgrade
- After resolving conflicts

NFS-mounted partitions

Do not install either Service Manager or the Service Manager Upgrade Utility on an NFS-mounted remote partition. This can cause serious performance degradation. The performance of an NFS-mounted partition drops significantly if it reads data in many small pieces instead of one large chunk. Service Manager generates a lot of database read/write activity. An NFS-mounted partition is significantly slower than a local drive when running the Upgrade Utility process.

Step 3: Perform a system health check

A well-maintained production system is the easiest to upgrade. Before starting the upgrade process, perform all regular maintenance on your production system. If necessary, contact HP Customer Support for recommended actions. Suspend all customization activity on the production system.

Step 4: Create development and test environments

Plan to have at least two copies of your existing production environment:

- A development system that mirrors your current production environment. Use the development system to run the Upgrade Utility and build a custom upgrade.
- A test system that mirrors your current production environment. Apply the custom upgrade on the test system and verify it there.

Step 5: Develop an upgrade strategy

In standard HP Service Manager terminology:

- *Customization* refers to changes to RAD applications;
- *Tailoring* refers to changes made by using Service Manager tailoring tools, such as Forms Designer and Format Control;
- *Configuration* refers to local settings (for example, in your environment records and the system information record).

The upgrade process affects different parts of the Service Manager system. Besides upgrading the standard Service Manager applications, an upgrade affects the RDBMS where Service Manager is running and any customized files or RAD applications. For more information, see ["How does customization affect the upgrade process?" on page 11](#).

Tailored systems

A list of tailored files can help you resolve differences quickly between your existing files and new files. You can also use the SQL Compare utility to determine how files differ.

RDBMS-mapped systems

Because Service Manager tables (data files) must be mapped to an RDBMS, you must choose one of the following options before beginning the upgrade:

- Allow the Upgrade Utility to modify your RDBMS tables for you.
- Use SQL Compare to update the RDBMS databases before beginning the upgrade process.

The upgrade can affect certain mappings and tables. Contact your database administrator for assistance and to discuss the impact on the RDBMS.

Localized systems

You can upgrade a localized system with the Upgrade Utility. Before you begin to upgrade a localized system, ensure that you have the correct language pack available to which you will be upgrading. For more information and instructions on how to install the language pack, refer to the *HP Service Manager 9.35 Language Pack Installation Guide*. The Upgrade Utility detects the presence of a localized system and runs the upgrade just as it would for an English system. You will have to make any customization and tailoring changes, based on the requirements described in this document for each of your system configurations.

Customized RAD applications and ScriptLibrary records

A list of customized RAD applications and ScriptLibrary records and the extent of the customization is useful. If it is not available, the programmer who made the changes may be able to supply information. Or, you may need to run a comparison between the existing application or script and the new version.

Chapter 3: Preparing for an upgrade

Before you can develop or test an upgrade, you must create a mirror image of your current HP Service Manager production environment and prepare the system data for the upgrade process.

Topics in this section include:

- ["Step 1: Meet database requirements" below](#)
- ["Step 2: Purge existing upgrade files" on the next page](#)
- ["Step 3: Upgrade the server and client" on the next page](#)
- ["Step 4: Duplicate the production environment" on the next page](#)
- ["Step 5: Update Service Manager configuration files" on page 21](#)

Step 1: Meet database requirements

Before upgrading your system, verify that your system is pointing to the correct database.

- ["Convert all tables and fields from lowercase to uppercase" below](#)

Note: For Oracle users, you must have a granted role that includes “connect” and “resource” along with a granted system privilege of “select any dictionary” as a minimum in order to avoid errors generated by Oracle.

Convert all tables and fields from lowercase to uppercase

HP Service Manager does not generate lowercase table names or field names. Therefore, if your database is case sensitive, you must convert all tables and fields from lowercase to uppercase before you can upgrade the server and client or applications.

Step 2: Purge existing upgrade files

If you have run an applications upgrade in the past, there may be some artifacts left over from upgrade processing that need to be removed.

To purge existing upgrade files, follow these steps:

1. Type `*aapm.upgrade.purge` in the HP Service Manager command line, and then press **Enter**.
2. Select **I'm done, and I want to remove the upgrade files completely**.
3. Click **OK** to proceed.

Step 3: Upgrade the server and client

Verify that the server and client has been upgraded to the latest version. For more information, see the HP Service Manager documentation and the ["Server and client upgrade" on page 7](#) section.

Step 4: Duplicate the production environment

To achieve the best results, develop and test the custom upgrade on a system that resembles your production environment as closely as possible.

To duplicate the production environment, follow these steps:

1. Identify a server to use for the development and test environments.
 - **Unix:** You can copy the files to a new location on your production machine.
 - **Windows:** You must create the development system on a different machine from your production system.
2. Ensure that adequate memory and disk space is available and accessible. Frequent backups are necessary.
3. Ensure that your development and test systems meet all upgrade requirements. For more information, see ["Step 2: Meet the software requirements" on page 16](#).

- Upgrade your RDBMS to a version compatible with HP Service Manager 9.35. See the *HP Service Manager 9.35 Compatibility Matrix*.
 - Convert your RDBMS code page to Unicode. See your RDBMS vendor documentation.
4. Set up the environment of your development and test machines to resemble your production server as closely as possible. The operating system version and service pack level should match.
 5. Copy your existing production system data onto your development system.

HP recommends you use the native RDBMS backup utilities to back up your data. Refer to your RDBMS documentation for backup instructions.

6. Install a Service Manager 9.35 run time environment on the duplicated system. Do not load the Service Manager 9.35 demonstration data files.
7. Install a Service Manager 9.35 client on the duplicated system.

Step 5: Update Service Manager configuration files

The following tables list the changes that you need to make to the HP Service Manager configuration files before running the Upgrade Utility. Record all changes that you have made so that you can revert them to the original status after the upgrade.

Stop the Service Manager server, apply the required changes to the configuration files, and then restart the Service Manager server and then restart the Service Manager server by executing the **sm.exe** command in the Service Manager installation directory (for example, C:\Program Files (x86)\HP\Service Manager 9.35\Server\RUN).

sm.cfg

Parameter	Changes	Description
sm system.start	If this parameter exists, comment it out by changing it to: #sm system.start	Commenting this parameter out disables the background processes.
sm -sync	Add this parameter to the end of the file if it does not exist yet.	This parameter starts the sync process, which identifies and releases locks owned by inactive processes and shared memory that is not in use.

sm.cfg, continued

Parameter	Changes	Description
sm -httpPort	If there is more than one instance of the sm -httpPort parameter, keep only one instance.	Each sm -httpPort parameter starts a Service Manager server process that can handle a certain number of client sessions (see the Service Manager Help Center for more information). Keeping one process alive will be enough for the upgrade process.
Other parameters	Comment out all other parameters except the ones mentioned in this table.	Commenting out those parameters disables all the other Service Manager processes that are not required during an upgrade.

sm.ini

Parameter	Changes	Description
ir_disable:1	Add this parameter to the end of the file if it does not exist.	This parameter disables all IR keys on your existing Service Manager system. This will make the upgrade process run faster.
sessiontimeout:1200	Add this parameter to the end of the file if it does not exist. If this parameter already exists, update it to an appropriate value.	This parameter defines the number of minutes that the server waits for a client heartbeat signal before the server assumes that the client session has timed out and closes the connection. A value of 1200 sets the timeout to 20 hours (1200 minutes), a period that should be enough for an upgrade phase to complete in a typical scenario.

sm.ini, continued

Parameter	Changes	Description
<p>JVMOption(#):-Xss6M</p>	<p>Required only for HP-UX systems:</p> <p>Add this parameter to the end of the file if it does not exist.</p> <div style="background-color: #f0f0f0; padding: 5px; border: 1px solid #ccc;"> <p>Note: When adding the parameter, replace the hash symbol (#) with an option number that is not used in the sm.ini file. For example, if the sm.ini file already contains a JVMOption(0) and JVMOption(1), add JVMOption(2) :-Xss6M to the file.</p> </div>	<p>This parameter increases the Java virtual machine stack size to 6MB.</p>
<p>shared_memory:96000000</p>	<p>Replace the default shared_memory:32000000 with shared_memory:96000000.</p>	<p>This sets the shared memory size to 96MB. However, if you have a large database, you may need to allocate more shared memory to accommodate the upgrade processing.</p>

Chapter 4: Running the Upgrade Utility

Before you run the Upgrade Utility, make sure you have already upgraded your server and client binaries. For more information, see ["Server and client upgrade" on page 7](#).

Now that you have a functional environment, you are ready to run the Upgrade Utility. Follow the steps in this chapter to run the out-of-box upgrade against the data in your development system and to run your custom upgrade against your test and production systems. You must perform these steps in a HP Service Manager Windows client, instead of a web client.

Caution: If the upgrade fails while the Upgrade Utility is running, fix possible issues and rerun the Upgrade Utility, and you should be able to resume the upgrade from the failure point; if the upgrade process cannot be resumed, you must restore the database to the last backup point and fix possible issues before you can rerun the Upgrade Utility.

Topics in this section include:

- ["Step 1: Load the application upgrade files" below](#)
- ["Step 2: Run the SQL compare utility" on page 26](#)
- ["Step 3: Run the Upgrade Utility" on page 29](#)

Step 1: Load the application upgrade files

You must load the preupg.bin file and the transfer.bin file into HP Service Manager before you can use the Upgrade Utility.

Note: If you are performing a custom upgrade on a test or production system, use the preupg.bin file and the transfer.bin file included in your custom upgrade instead.

To load the application upgrade files, follow these steps:

1. On the HP Service Manager server, create a folder (referred to as the Upgrade folder later in this document).

Note: Make sure that the Service Manager server process (sm) has write and execute privileges for this folder.

If you are connecting to the Service Manager server from a client that is installed on a remote client computer, make sure that the folder is created on the Service Manager server instead of the client computer.

2. Extract the Service Manager application Upgrade Utility files to the Upgrade folder.
3. Log in to the Service Manager Windows client as a system administrator.

Note: Select **English** as the language when logging into the system for an upgrade.

4. Click **Window > Preferences > HP Service Manager**, and clear the **Client side load/unload** check box.

Caution: Failure to disable this option will cause the upgrade process to fail.

5. Load the preupg.bin file using Service Manager Database Manager.
6. Type `smupgrade` in the Service Manager client command line, and press **ENTER** to launch the Upgrade Utility.
7. In the **UPGRADE UTILITY** section, click **load transfer**.
8. In the text box, type the fully qualified path to the folder that hosts transfer.bin, and then click **Next**.

Note: When typing the path do not include the file name (transfer.bin) in the path.

Example:

Windows: `c:\temp\upgrade\`

Unix: `/tmp/upgrade/`

9. Wait until the file is loaded and the system displays the `Transfer files loaded` message.

Note: The loading process may take a long time.

10. Log off Service Manager and log back on.

Step 2: Run the SQL compare utility

The SQL compare utility is an informational tool that compares your existing table and field information with those of the HP Service Manager version you are upgrading to, and then reports the new fields that will merge into the existing tables. You can use the list of the fields produced by the SQL compare utility to determine whether any fields in your current system differ from those in the new version. You can also use the report to determine which new fields must be added to RDBMS-mapped files if you choose to make the changes manually during the application upgrade.

Note: If you are going to accept the new DBDICTS and the changes made to the DBDICTS in the upgrade, you do not need to run this utility.

Running SQL Compare

The following SQL Compare files are included when you install the HP Service Manager Upgrade Utility:

- sqlupgrade.unl
- upgdbdct.dta

SQL Compare returns messages for dbdict mappings that contain new fields. You can update the dbdicts to contain the fields specified by the SQL Compare applications before you begin the application upgrade.

Note: Run SQL Compare on the development system.

To run the SQL Compare utility, follow these steps:

1. Load sqlupgrade.unl into your development system from Database Manager.
2. Type `smupgrade` in the Service Manager command line, and then press **ENTER**.
3. Click **Run SQL Compare Utility**. A dialog box opens.

4. Type the fully qualified path to upgdbdct.dta including the final back slash (\) or forward slash (/), depending on your operating system. For example, if you copied the files to a temporary directory, the path might be:

Windows: c:\temp\upgrade\

Unix: /tmp/upgrade/

Do not include the file name (upgdbdct.dta) in this path.

5. Click the **Load** button.

SQL Compare returns the following message:

Process Complete. Please check for any additional messages.

The results of the SQL Compare process are stored in the sqlupgrade table. This table resets each time you run SQL Compare.

To view the SQL compare results, follow these steps:

1. Type `smupgrade` in the Service Manager command line, and press **ENTER**.
2. Click **View SQL Compare Results**.
3. Click **Search**. The results are displayed in a record list.

Each database dictionary that requires changes appears as a separate record in the sqlupgrade file. This record also lists the new fields that you must add to the database dictionary, if you are updating your RDBMS mapped system manually.

The sqlupgrade record provides the following information for each field you must add, if you are updating your RDBMS mapped system manually.

List of sqlupgrade fields

Field	Description
Field Name	The exact field name to add to the associated database dictionary.
Type	The data type of the field.
Level	The level where this field resides.
Structure	The structure and array name that you should add to this field.

List of sqlupgrade fields, continued

Field	Description
Alias of	If this is an alias field, it contains the name of the primary field that it is an alias of. Otherwise this field is blank.

Add new fields

For the new fields to perform correctly, they must exist in both the HP Service Manager database dictionary and the SQL database. If you are updating your RDBMS mapped system manually, you must add them to the SQL database and update the existing Service Manager SQL mapping in the database dictionary. When you update a table in sqlsystemtables, add fields only through the database dictionary. Modifying the SQL mapping damages the file structure of the table.

Determine the correct structure

In most cases, you should add the new field to the descriptor structure. However, sometimes the Structure field contains something other than the word descriptor. When this occurs, add the new field to the appropriate location.

Action to take with non-descriptor fields:

In this instance	Add the field here
The field resides in another structure	If the field is not an array field, you must add the field to the structure listed in the Structure field. For example, if the Structure field reads middle, add the field to the middle structure of the dbdict.
The field is an array	If the field is an array, the field name appears twice in the new field list. The first entry has a data type of array; the second is the data type of the array, such as character or logical. Use the first entry to determine the structure where you should add the array. The Structure field in the second entry reflects both the structure for the array (unless it uses the descriptor structure) and the name of the array itself.
The field is part of an array of structures	If the Structure field lists multiple fields exclusive of an array name, you must add the field to a structured array. To determine the placement in the structured array, follow the list of field names in the Structure/Array from left to right. The first name is the array name and the second is the structure name.

Note: When adding fields to an array of structures, add them in the same order as they appear in the sqlupgrade record.

Step 3: Run the Upgrade Utility

The running of the Upgrade Utility involves the following three primary phases:

1. In the first phase, the Upgrade Utility guides you through several questions and collects information needed for the upgrade.
2. The second phase is called the "dbdict update phase," where the utility updates dbdicts.
3. The third phase is called the "data update phase," where the utility updates application data.

To run the HP Service Manager Upgrade Utility, follow these steps:

1. Type `smupgrade` in the Service Manager client command box, and then press **ENTER** to launch the Upgrade Utility.
2. In the **UPGRADE UTILITY** section, click **SERVICE PACK**.
3. In the **Upgrade Processing** section, click **Apply an Upgrade**.
4. On the Welcome screen, verify that the **Applications version upgrading from** field displays your current application version, and then click **Next** to continue.

Note: If this screen does not display the correct version, do not continue with the upgrade. Instead contact HP Software Customer Support.

5. The system displays the following message:

Message: Please select the language(s) in addition to English to be upgraded.

You see a list that displays all the supported non-English languages. By default, the languages that are installed on your Service Manager system are set to **true**. Select **false** for the languages that you do not want to upgrade, and click **Next**.

Note: You can choose to update more languages later if you choose only part of the installed

languages in this step. For more information, see ["Updating languages at a later time" on page 85](#).

6. The system displays the following message:

Message: Are you going to use this system to create a custom upgrade for another system?

We are preparing a custom upgrade on a development system, so leave the selection as **Yes**, and then click **Next**.

7. The system displays the following message:

Message: What is the fully qualified path to the HP Service Manager Upgrade patch files?

By default, the text box displays the fully qualified path to the Upgrade folder on the Service Manager server. Keep the path unless it does not point to the correct folder, and then click **Next**.

8. The system displays the following message:

Message: When HP Service Manager Upgrade doesn't recognize an object it should

We are preparing a custom upgrade on a development system, so select **Install HP's Version of the Object Alongside Your Own**, and then click **Next**.

Note: The **Replace your version of the object with the HP Service Manager's version of the object** option is for applying a custom upgrade. Do not select this option unless you are sure to replace your own versions of objects and do not need to perform conflict resolution.

9. The system displays the following message:

Message: Do you want to enable automatic conflicts merge and which base version do you like to use?

For the Upgrade Utility to merge conflicting objects automatically, select the **Enable** check box, select a **Base Version** from the list, and then click **Next**.

Note: The Base Version you select here will be considered as a clean version on which all changes are based. The earlier the version is, the less the chance your tailoring will be discarded. However, the earlier the version is, the less likely the utility will successfully merge

objects. Typically, it is safe to keep the default value, which is set to the earliest version that your applications were previously upgraded from.

10. The system displays the following message:

Message: Do you want to force the replacement of the objects?

If you want to replace each Renamed RAD application with its upgrade version, select the **Replace RAD** option. Each Renamed RAD application is replaced with the upgrade version, and a copy of old RAD application is renamed to `PRE<old version number><object name>`. Its upgrade result is marked as "Replaced".

If you do not want to replace Renamed RAD application, do not select the **Replace RAD** option. Each Renamed RAD application is not replaced but still remains in the Renamed list, and the upgrade version of the RAD application is renamed to `NEW935<object name>`. Its upgrade result is kept as **Renamed**.

11. The upgrade is now ready to start. Click **Next**.
12. When you are asked whether you want to proceed, click **Yes**.
13. The Upgrade Utility displays the status when the upgrade is being processed.
14. When you receive an "UPGRADE IS COMPLETE" message, the Upgrade Utility has finished the data processing and you can follow the instructions in the message to complete the next steps. After you close the message dialog, you are automatically logged out.
15. Restart the server and log back in to the client.
16. Open the `scversion` table in the Database Manager, and verify that the **Application Version** field is **9.35.00xx**. If this field displays a value other than **9.35.00xx**, check the log files to identify the issue that occurred.

Upgrade Utility logs and error messages

The Upgrade Utility creates a set of log files during the upgrade process. These files reside in the same directory as the upgrade files.

List of upgrade log files

Log file	Contents
detail.log	<p>This file contains specific information about the upgrade, including the following:</p> <ul style="list-style-type: none"> • All information in upgrade.log • Name of the file being purged, for example, “2014-03-20 13:58:32 dbdict: upgradestatus is purged.” • Progress of a file loading, for example, “2014-03-20 13:58:39 Adding record # 100 from table upgradeobjects”. • Changes made to fields during file processing, for example, “2014-03-20 14:05:24 Increasing field length for incidentlib.company in kmquery dbdict from VARCHAR(40) to VARCHAR(70)” • Signature of a file and the action on it, for example, “2014-03-20 14:19:53 Processing Format Record : cc.get.dependen, signature=(current=3843738292, oob=NONE, upgrade=3843738292), upgraderesult=current”
except.log	<p>This file contains information about any exceptions reported by the upgrade, including the following:</p> <ul style="list-style-type: none"> • Messages about data type mismatches that failed to be resolved, or database dictionaries failed to be upgraded, for example, "2014-03-20 14:04:29 dbdict:FolderRights, field:delete, field type is logical -- expected to be:character" <p>See "Data type mismatches" on page 41.</p> <ul style="list-style-type: none"> • Messages about the unique key changes that failed to be resolved, for example, "2014-03-20 14:06:31 dbdict:Todo, Unique Key is {"record.id", "itemType"} -- expected to be:{"record.id"}" <p>If there are exceptions logged in this file, you will have to resolve them in the "Resolving exceptions and conflicts" phase.</p>

List of upgrade log files, continued

Log file	Contents
upgrade.log	<p>This file contains information about where the upgrade is at any point. This file contains only the main steps of the upgrade, including the following:</p> <ul style="list-style-type: none"> • Starting and ending of each sub-phase, for example, "2014-03-20 13:58:07 **** Start Phase [Pre Upgrade Action Update] ****" • Main activities during each sub phase, for example, "2014-03-20 13:58:32 Purging upgrade files..." • Number of files to be processed, for example, "2014-03-20 14:04:25 There are 608 dbdicts to be processed." • Names of the files being processed, for example, "2014-03-20 14:04:25 Processing dbdict, AdvFilter"

Chapter 5: Resolving exceptions and conflicts

After you complete an application upgrade on your development system, you are ready to resolve the exceptions and conflicts that originate from tailoring on an upgraded object. Before resolving conflicts, HP Service Manager features may not function as expected. This chapter will guide you through a process called "conflict resolution."

Topics in this section include:

- ["Upgrade results" below](#)
- ["Step 1: Resolve exceptions" on page 40](#)
- ["Step 2: Resolve conflicts" on page 46](#)
- ["Step 3: Perform additional manual tasks" on page 62](#)
- ["Step 4: \(Optional\) Modify automatically fixed data" on page 62](#)
- ["Step 5: Return the system to normal operation" on page 63](#)
- ["Step 6: Test the system \(functional testing\)" on page 64](#)
- ["Step 7: Back up the system" on page 64](#)

Upgrade results

While you are applying an out-of-box upgrade on the development system, the Upgrade Utility stores information regarding the upgrade result of each object. You can access this information in the Upgrade Utility through **View/Merge Upgrade Results**.

View the upgrade results

To view the upgrade results, follow these steps:

1. Type `smupgrade` in the HP Service Manager command line, and then press **Enter** to launch the Upgrade Utility .
2. In the UPGRADE UTILITY section, click **View/Merge Upgrade Results**.

3. In the **Result** drop-down list, select the type of results you want to search for.

Example: Renamed

When you select a result type from the drop-down list, the description of that result type appears under the drop-down list.

4. Click **Search**.
5. A list is returned that displays all the result records of the specified type.

Note: Some types of results are only informational and do not require any follow-up action.

Description of upgrade results

The search criteria, search results, and a description of the applicable action for each result are described in the table below.

Field	Definition
Object Name	Enter the name of the object you want to search for, or leave this field blank to return objects with any name. The object name is typically the unique identifier in the database table specified for the object type.
Object Type	Enter the type of object you want to search for, or leave this field blank to return all object types. Some of the object types you could search for are: Application Cluster, Object, Process, ScriptLibrary, displayoption, format, formatctrl, help, joindefs, link, scmessage, screlconfig, triggers, validity, and wizard.
Result: Added	Select this option to search for new objects that the Upgrade Utility added to the system. These objects did not exist in your system before this update. No further action is necessary for these objects.
Result: Already Current	Select this option to search for objects that were already the latest version. No further action is necessary for these objects.

Field	Definition
<p>Result: Auto Merged</p>	<p>Select this option to search for objects that the Upgrade Utility automatically merged by using your local version, the out-of-box version and the upgrade version of the objects.</p> <p>Note: The result occurs only after applying the first out-of-box upgrade; it no longer occurs after applying the custom upgrade.</p> <p>Required Action: If the object was not merged the way you expect, use the Revert or Mass Revert option from the options menu to revoke the auto-merge and merge the objects manually.</p>
<p>Result: Error</p>	<p>Select this option to search for objects that encountered an error while being updated by the Upgrade Utility. For more information about the error, review the sm.log and except.log files.</p> <p>Required Action: Fix the cause of the error, or apply the upgrade again in a copy of your production system if it is needed.</p>
<p>Result: Forced</p>	<p>Select this option to search for objects that were tailored on your Service Manager system or only changed on the upgrade version. After upgrade, your objects were automatically replaced with the objects in your custom upgrade package. The Upgrade Utility copied your object of the original version to its revision.</p> <p>Note: This result occurs only after applying the custom upgrade.</p> <p>No further action is necessary for these objects.</p>
<p>Result: Kept Customer</p>	<p>Select this option to search for objects that were tailored on your Service Manager system but not changed on the upgrade version. These objects were not changed.</p> <p>Note: The result occurs only after applying the first out-of-box upgrade; it no longer occurs after applying the custom upgrade.</p> <p>Tip: If an object is Application Cluster and you want to use the upgrade version, you can select Choose Upgrade. The object <i><object name></i> is then renamed to <i>PRE<old version number><object name></i> and the object <i>NEW935<object name></i> is renamed to <i><object name></i>.</p> <p>No further action is necessary for these objects.</p>

Field	Definition
<p>Result: Kept Customer Non-OOB</p>	<p>Select this option to search for objects that did not exist in the original version but were added on your Service Manager system, and also added on the upgrade version.</p> <p>Note: The result occurs only after applying the first out-of-box upgrade; it no longer occurs after applying the custom upgrade.</p> <p>Note: If the object is Application Cluster and you want to use the upgrade version, you can select Choose Upgrade. The object <object name> is then renamed to PRE<old version number><object name> and the object NEW935<object name> is renamed to <object name>.</p> <p>No further action is necessary for these objects.</p>
<p>Result: Merged</p>	<p>Select this option to search for objects that were tailored on your Service Manager system, which you have merged with the version in this patch.</p> <p>Required Action: Test these objects, and when satisfied change their result to Reconciled.</p>
<p>Result: Previously Reconciled</p>	<p>Select this option to search for objects that were tailored on your Service Manager system, that were marked as Reconciled during a previous upgrade or patch release, or where your object was not changed and the Upgrade Utility added a new object NEW935<object name>.</p> <p>Note: The result occurs only after applying the out-of-box upgrade; it no longer occurs after applying the custom upgrade.</p> <p>Required Action: Choose one of the following for each object with this result.</p> <ul style="list-style-type: none"> • Keep the old version — No further action is necessary. • Keep the new version — Select the object in the merge view and click Copy all from left to right on the tool bar. • Merge new and old versions — Determine which of the new features should be incorporated into your tailored object, and then make the changes in your tailored object. When finished, delete the new object NEW935<object name> and the copied object PRE<old version number><object name>.

Field	Definition
<p>Result: Reconciled</p>	<p>Select this option to search for objects that you have already marked as Reconciled.</p> <p>Note: The result occurs only after applying the out-of-box upgrade; it no longer occurs after applying the custom upgrade.</p> <p>No further action is necessary for these objects.</p>
<p>Result: Renamed</p>	<p>Select this option to search for objects that were not only tailored on your Service Manager system but also changed on the upgrade version. After upgrade, your tailored object was not changed, the Upgrade Utility added a new object NEW935<object name> and copied your tailored object as a backed up object PRE<old version number><object name>.</p> <p>Note: The result occurs only after applying the out-of-box upgrade; it no longer occurs after applying the custom upgrade.</p> <p>Required Action: Choose one of the following for each object with this result.</p> <ul style="list-style-type: none"> • Keep the old version — No further action is necessary. • Keep the new version — Select the object in the merge view and click Copy all from left to right on the tool bar. • Merge new and old versions — Determine which of the new features should be incorporated into your tailored object, and then make the changes in your tailored object. When finished, delete the new object NEW935<object name> and the copied object PRE<old version number><object name>. <p>Note: If the object is Application Cluster and you want to use the upgrade version, you can select Choose Upgrade. The object <object name> is then renamed to PRE<old version number><object name> and the object NEW935<object name> is renamed to <object name>.</p>
<p>Result: Upgraded</p>	<p>Select this option to search for objects that were automatically replaced with the upgrade version objects. These are objects that were not tailored on your Service Manager system, but changed on the upgrade version.</p> <p>Note: The result occurs only after applying the out-of-box upgrade; it no longer occurs after applying the custom upgrade.</p> <p>No further action is necessary for these objects.</p>

Field	Definition
Result: Replaced	<p>Select this option to search for RAD Application objects that were not only tailored on your Service Managersystem but also changed on the upgrade version when you select Replace RAD. After upgrade, your tailored object was renamed to PRE<old version number><object name> and the Upgrade Utility added a new object <object name>.</p> <p>Note: The result occurs only after applying the out-of-box upgrade; it does not occur after applying the custom upgrade.</p> <p>For objects with this result, no further action is necessary.</p> <p>Tip: If you do not want to replace the RAD Application, you may select Revert. The object <object name> is then renamed to NEW935<object name> and the object PRE<old version number><object name> is renamed to <object name>. The result is then set back to Renamed, Kept Customer or Kept Customer Non-OOB.</p>

See the following table for some examples about how the upgrade result types are marked for an existing record.

OOB record (9.30)	OOB record (9.33)	Customer record (9.33)	OOB record (9.35)	Upgrade Utility check sequence	Upgrade Utility check condition	Conflict flag	Upgrade result type	Upgrade result value
111	112	112	112	1	Customer record (9.33) = OOB record (9.35)	No	Already Current	112
111	112	112	113	2	Customer record (9.33) != OOB record(9.35) and Customer record (9.33) = OOB record (9.33)	No	Upgraded	113

OOB record (9.30)	OOB record (9.33)	Customer record (9.33)	OOB record (9.35)	Upgrade Utility check sequence	Upgrade Utility check condition	Conflict flag	Upgrade result type	Upgrade result value
111	112	113	112	3	Customer record (9.33) != OOB record (9.35) and Customer record (9.33) != OOB record (9.33) and OOB record (9.33) = OOB record (9.35)	No	Kept Customer	113
111	112	113	114	4	Customer record (9.33) != OOB record (9.35) and Customer record (9.33) != OOB record (9.35) and OOB record (9.33) != OOB record (9.35)	Yes	Renamed	113

Manage the upgrade result data

To manage the upgrade result data more easily, do either of the following:

- Open the Upgrade Results list, click **More** or the More Actions icon, and click **Export to Excel** to manage the data in a Microsoft Excel document.
- Open the Upgrade Results list, click **File > Print > List View** to print the list of records. (See the Help Center documentation for more information.)

Step 1: Resolve exceptions

Exceptions are logged if the Upgrade Utility cannot update an object. After running an upgrade, you can identify exceptions by viewing error messages in the except.log or sm.log file. These exceptions are reported in the Upgrade Results list as "Error."

Data type mismatches

If the data type of a field in your dbdict does not match the data type of the like-named field defined in the dbdict provided by the upgrade package, the Upgrade Utility cannot merge these dbdicts. For example, if an existing dbdict has a scalar field and the Upgrade Utility attempts to add a structure field with the same name, this discrepancy prevents the dbdict from being updated.

To fix this issue, you can change the data type and the SQL type of the field, and use Complex Update to migrate existing data on that field to the target data type. The following is an example that shows the process of fixing a typical data type mismatch.

Note: The error messages in the except.log file identify each data type by an index number:

Index number	Data type
1	number
2	character
3	date/time
4	logical
8	array
9	structure
11	expression

The following table shows a list of data type mismatches that may appear in the except.log file. The data type mismatches are listed for an Oracle database. If you are using an MSSQL or a DB2 database, the actual error message may vary slightly. For example, the following bullet points highlight the different errors in the different databases:

- Oracle Error : dbdict:ApprovalDef, field:appr.condition, SQL type is CHAR(1) -- expected to be:RAW (255)
- MSSQL Error: dbdict:ApprovalDef, field:appr.condition, SQL type is CHAR(1) -- expected to be:VARBINARY(255)
- DB2 Error: dbdict:ApprovalDef, field:appr.condition, SQL type is CHAR(1) -- expected to be:VARCHAR (255) FOR BIT DATA

Error message in Oracle:	Solution:
<p>dbdict:incidents, field:svc.options, SQL type is VARCHAR2(90) -- expected to be:BLOB</p>	<p>To fix these issues, change the SQL type to RAW(255) or BLOB by using the Dbdict utility.</p> <p>Additionally, you will need to set the "SQL RC" to true to allow the field to store RAD expressions. Note that the stored value of the field in the database is encoded by Service Manager.</p>
<p>dbdict:cm3eventack, field:number, field type is number -- expected to be:character</p>	<p>To fix this issue, change the field type to character by using the Dbdict utility.</p>
<p>dbdict:eventin, field:evnumber, field type is number -- expected to be:character</p> <p>dbdict:eventout, field:evnumber, field type is number -- expected to be:character</p>	<p>These fields reside in the descriptor structure field of BLOB SQL type. To fix this issue, change the field type to character by using the Dbdict utility.</p>
<p>dbdict:svcCatLanguage, field:catalogid, field type is character -- expected to be:number</p>	<p>This field resides in the catalog structure field of BLOB SQL type. To fix this issue, change the field type to number by using the Dbdict utility.</p>
<p>dbdict:licenseinfo, field:id, field type is character -- expected to be:number</p>	<p>The licenseinfo table is used to track license information by Service Manager server. This issue should be ignored.</p>
<p>dbdict:svcCatalog, field:id.attach, field type is character -- expected to be:number</p>	<p>This id.attach field is an alias of id field in svcCatalog table. To fix the issue, change the field type to by using the Dbdict utility.</p>
<p>dbdict:FolderRights, field:close, field type is logical -- expected to be:character</p>	<p>The close field is an alias of delete field in FolderRights table. To fix the issue, change the field type to character by using the Dbdict utility.</p>
<p>dbdict:FolderRights, field:delete, field type is logical -- expected to be:character</p>	<p>This issue can be fixed by following the steps in the "Fixing the FolderRights delete field" on the next page section.</p>

Fixing the FolderRights delete field

Example: The dbdict for the FolderRights table has a delete field with the "logical" data type. The Upgrade Utility tries to update the delete field with the "character" data type, which has possible values of "always," "never," "workgroup," and "assigned."

1. In the dbdict for the FolderRights table, add a field named delete.tmp with a data type of character, and update the dbdict.
2. Log out of the system and log back in.
3. Make sure that the Complex Update feature is enabled for the FolderRights table.
4. In the Database Manager, search for all records in the FolderRights table.
5. From the More Actions menu, click **Mass Update**.
6. When you are asked whether you want to update all records, click **Yes**.
7. Click **Complex Update** on the toolbar.
8. In the statements area under **Instructions for action on EACH RECORD**, add statements using standard RAD expressions to migrate data from the **delete** field to the **delete.tmp** field.

Example:

```
if delete in $file=true then delete.tmp in $file="always" else delete.tmp in $file="never"
```

9. In the dbdict for the **FolderRights** table, edit the **delete** field and add the **Type** (character) and **SQL Type** (same as the SQL Type automatically assigned for **delete.tmp**).
10. Log out of the system and log back in.
11. In the Database Manager, search for all records in the **FolderRights** table.
12. From the More Actions menu, click **Mass Update**.
13. Click **Complex Update** on the toolbar.
14. In the statements area under **Instructions for action on EACH RECORD**, add statements using

standard RAD expressions to migrate data from the delete.tmp field to the delete field and empty the delete.tmp field.

Example:

```
delete in $file=delete.tmp in $file; delete.tmp in $file=NULL
```

15. In the dbdict for the FolderRights table, delete the delete.tmp field.
16. Log out of the system and log back in.
17. Test the change by updating records in the FolderRights table and populating the delete field with "always," "never," "workgroup," or "assigned."

Handle key change failure

If the Upgrade Utility fails to apply certain key changes, error information is logged into the except.log file. Review the log file and make appropriate operations:

Error message 1: Failed to add <key_type> key: <field_name> to table <table_name>. You must add it manually.

Follow these steps to handle this error:

1. Type `dbdict` in the Service Manager command line, and then press **Enter**.
2. In the **File Name** field, type the table name indicated by the error message, and click **Search**.
3. Click the **Keys** tab.
4. Position the mouse point in the key name part of an empty key structure, and click **New Field/Key**.
5. Select the appropriate key type from the combo list, and add the appropriate field to the key, as indicated by the error message.
6. Click **Add**, and click **Yes** to confirm.
7. Click the **Keys** tab, and click **OK** to save the change.
8. Continue to follow *steps 1* through *step 7* for each key that failed to be added.

Error message 2: Failed to update <key_type> key: <old_field_name> to <new_field_name> in table <table_name>. You must update it manually.

Follow these steps to handle this error:

1. Type `dbdict` in the Service Manager command line, and press **Enter**.
2. In the **File Name** field, type the table name indicated by the error message, and click **Search**.
3. Click the **Keys** tab.
4. From the key list, select the key name that is indicated by the error message, and click **Edit Field/Key**.
5. Update the fields in the key according to the field names indicated by the error message.
6. Click **OK**, and click **Yes** to confirm.
7. Click the **Keys** tab, and click **OK** to save the change.
8. Continue to follow *steps 1* through *step 7* for each key that failed to be added.

Error message 3: Failed to remove `<key_type>` key: `<field_name>` from table `<table_name>`. You must remove it manually.

Follow these steps to handle this error:

1. Type `dbdict` in the Service Manager command line, and press **Enter**.
2. In the **File Name** field, type the table name indicated by the error message, and click **Search**.
3. Click the **Keys** tab.
4. From the key list, select the key name that is indicated by the error message, and click **Edit Field/Key**.
5. Click **Delete**, and click **Yes** to confirm.
6. Click the **Keys** tab, and click **OK** to save the change.
7. Continue to follow *steps 1* through *step 6* for each key that failed to be removed.

In addition, you may encounter the following Unique Key errors:

Error: dbdict:Approval, Unique Key is {"unique.key", "file.name", "name"} -- expected to be:{"unique.key", "file.name", "name", "component"}

Error: dbdict:ApprovalLog, Unique Key is {"counter", "file.name", "unique.key"} -- expected to be: {"counter", "file.name", "unique.key", "component"}

Unexpected errors

If the `except.log` file or the Upgrade Results list reports any errors other than data type mismatches, review the `sm.log` file for more information, and if needed, contact HP Customer Support for assistance.

Step 2: Resolve conflicts

In this step, you are going to resolve the conflicts between your tailored objects and the new objects provided in the upgrade package.

Standard conflict resolution process

The standard process of resolving conflicts are listed as follows:

1. To view the conflicts, click **View/Merge Upgrade Results** and search for records with a status of "Renamed."
2. For each renamed object, you can choose one of the following options.

- **Option 1:** Use your customized object instead of the new object.

In this case, delete the new object that is prefixed with `NEW935` and the copied object that is prefixed with `PRE<version_number>`.

- **Option 2:** Use the new object instead of your customized object.

In this case, delete your customized object and the copied object that is prefixed with `PRE<version_number>` and then rename the new object by removing the `NEW935` prefix, or you can select **Choose Upgrade** to replace the object with the new object that is prefixed with `NEW935`.

The Mass Choose Upgrade feature can help you replace multiple customized objects with new objects that are prefixed with `NEW935`. For more information, see the ["Using the Mass Choose Upgrade feature" on page 60](#).

- **Option 3:** Merge the changes shipped with the new object into your customized object.

In this case, find out what changes the new object includes, manually apply those changes to your customized object, and then delete the new object that is prefixed with NEW935 and the copied object that is prefixed with PRE<version_number>.

Note: The Merge tool, Auto-Merge and Revert options, and third-party three-way compare and merge tools can assist you in comparing the objects and merging the code during the out-of-box upgrade. See ["Using the Merge tool" on page 53](#) and ["Using the Auto Merge and Revert options" on page 60](#) for more information.

3. After resolving each conflict, you must mark the object as "Reconciled." Marking an object as reconciled will remove it from the current conflict list and provides the version with which the object was last reconciled.

Note: The Mark as Reconciled feature can assist you to mark the object as Reconciled. For more information, see ["Using the Mark as Reconciled feature" on page 61](#).

For more specific guidelines and examples for conflict resolution, see white paper [Conflict Resolution for Upgrade to Service Manager \(SM\) 9.3x](#).

Display components

The Upgrade Results list also includes conflicts in display components. You can follow the standard conflict resolution process to resolve these conflicts. However, you must pay special attention to following types of display components:

- The Display RAD application (RAD=display)
- displayscreen records
- displayoption records
- displayevent records

Display application

The Display RAD application (RAD=display) is a HP Service Manager RAD application that provides access to RAD features without requiring RAD programming skills or RAD licensing.

If the Display RAD application appears in your upgrade results list, perform conflict resolution on that application as part of the standard conflict resolution process. It is highly recommended that you use the new version of the application.

Display screen records

Display screens are individual records identified by a unique screen ID. The displayscreen records define the attributes of a screen and provide access to the individual records for options and events. A display screen is not the same as a form.

Caution: There are triggers attached to the displayscreen file. Changes to the records in this file affect their associated display options and events.

If any displayscreen objects appear in your upgrade results list, perform conflict resolution on those records by following the standard conflict resolution process.

Display options and display events

The Upgrade Utility upgrades the display components in the same manner as all other components. The displayoption table and the displayevent table have a unique identifier, stored in the ID field. The upgrade process assigns an ID to every display option following the pattern: **<screen id>_<action>_<number>**, where the screen ID and action are from the display option (or event), and the number is an optional field added when multiple options have the same screen ID and action.

If options that have been added to your system have the same action as others in the same display screen, the upgrade process assigns a <number> in the order of the options' GUI option number.

If an added option was not the last option in terms of GUI option number, the upgrade process does not add the additional numbers in the ID field in the same order as they would have for an out-of-box system. The upgrade process renames the added option and any option after it (in GUI option order), it does not upgrade them automatically.

To ensure that this type of renaming does not happen in future upgrades, when performing conflict resolution on these options, use the ID of the renamed option, **NEW935<screen id>_<action>_<number>** and manually change the identifier of the added options. Rename all other options to match the ID of the renamed ones.

When renaming an option, use an identifier to specify that this is a customized option, added for your installation. For example, an ID might look like **apm.edit.problem_do nothing_ACME1**.

This table gives an example of part of the display screen conflict resolution for apm.edit.problem.

Example conflict resolution for the apm.edit.problem display option

Screen ID	GUI Action	Upgrade Action	
300	do nothing	update	Name: apm.edit.problem_do_nothing_1 Result: This item was updated correctly. User Action: No action necessary.
400	do nothing	update	Name: apm.edit.problem_do_nothing_2 Result: This item was updated correctly. User Action: No action necessary.
450 This is an option you added.	do nothing	rename	Name: apm.edit.problem_do_nothing_3 Result: This item was renamed. It is your customized option. User Action: Rename this object to give it a unique new name, such as: apm.edit.problem_do_nothing_ACME1 Name: NEW935apm.edit.problem_do_nothing_3 Result: This is the new SM9.35 option. User Action: Perform conflict resolution. To perform conflict resolution, open apm.edit.problem and look at the options. Compare this option with apm.edit.problem_do_nothing_3 and NEW935apm.edit.problem_do_nothing_3
500	do nothing	The upgrade ignores this option.	Result: This option does not appear in the reports. User Action: Perform conflict resolution. To perform conflict resolution, open apm.edit.problem and look at the options. Compare this option with apm.edit.problem_do_nothing_3 and NEW935apm.edit.problem_do_nothing_3

RAD applications

You can follow the standard conflict resolution process to resolve conflicts for RAD applications. In the Upgrade Results list, conflicts for RAD applications are displayed with an object type of "Application Cluster." These types of objects are different from the other object types because a RAD application is made up of records from several different tables.

Options for resolving RAD application conflicts

Records with the "Application Cluster" object type appear in the Upgrade Results list only in either of the following scenarios.

Note: The codes for RAD applications for which "Current Release Level" is not marked as "SM 9.35" (for example "7.1"), are already current with the ones in Service Manager 9.35. Therefore, you should not change the "Current Release Level" field to "SM 9.35". There are two cases in which a RAD application's "Current Release Level" may be marked as "SM 9.35":

1. The RAD applications that are new in Service Manager 9.35.
2. The RAD applications whose code has been changed in Service Manager 9.35.

Scenario	Action
<p>Your organization has a RAD license and has tailored the RAD application in question</p>	<p>Similar to the "Standard conflict resolution process" on page 46, you can choose one of the following options when resolving a RAD application conflict:</p> <ul style="list-style-type: none"> <p>• Option 1: Use your customized object instead of the new object.</p> <p>In this case, delete the new RAD application that is prefixed with NEW935 and the copied RAD application that is prefixed with PRE<version_number>.</p> <p>• Option 2: Use the new object instead of your customized object.</p> <p>In this case, you may select "Choose Upgrade" to use the new object, or you may manually delete your customized RAD application and rename the new RAD application by removing the NEW935 prefix.</p> <p>• Option 3: Merge the changes shipped with the new object into your customized object.</p> <p>In this case, find out what differences exist between the RAD applications, manually update the customized RAD application, and compile the code. Then, delete the new RAD application that is prefixed with NEW935 and the copied RAD application that is prefixed with PRE<version_number>. For example, you can use the 'Compare All' feature in the RAD Editor to assist you in identifying which panels have changed and then manually update panels as necessary in that RAD application.</p>

Scenario	Action
<p>Your organization has applied a hotfix or patch that included a RAD application, which changed the existing RAD application when it was loaded into the system.</p>	<p>Option 3 is not applicable to you. You can choose to either keep the new version of the RAD app that came with the upgrade package, or keep the RAD application that was loaded with the hotfix or patch. In most cases, you need the newest version of the RAD application that came with the upgrade package.</p> <p>In this scenario, you can use "Revert" or "Choose Upgrade" to resolve RAD application conflicts. Alternatively, if you want to resolve the conflicts manually, perform two operations: deleting a RAD application, and renaming a RAD application.</p> <p>To delete a RAD application, follow these steps:</p> <ol style="list-style-type: none"> 1. Open the RAD application in the RAD Editor. 2. Click Delete. 3. Click Delete All. <p>To rename a RAD application, follow these steps:</p> <ol style="list-style-type: none"> 1. Open the RAD application in the RAD Editor. 2. From the More Actions menu, click Copy/Rename. 3. Enter the name of the new RAD application. 4. Click Rename.

Using the Merge tool

For each object marked as "Renamed" in the Upgrade Results list, the Upgrade Utility generates XML objects for the three versions of the object: base, customer, and upgrade.

Version	Location	Description
base	<i>Upgrade</i> \3waymerge\work\base	An XML representation of every object that has been signed in the pre-upgrade out-of-box version.
customer	<i>Upgrade</i> \3waymerge\work\customer	An XML representation of all objects that were tailored in the customer version and resulted in a conflict during the upgrade.
upgrade	<i>Upgrade</i> \3waymerge\work\upgrade	An XML representation of the object provided by the upgrade package of all objects that resulted in a conflict.

Each of the three folders described above contains a sub-folder for each signed table. You can find the XML representations of the objects in the table within these sub-folders.

The built-in, two-way/three-way Merge tool allows you to examine the upgrade and customer versions of a record in a side-by-side view as well as the base, upgrade, and customer versions of a record in a three-way view. This will help you to determine which changes to include in the final record.

Note: The tool does not work with RAD applications.

This tool assists the conflict resolution process in these two ways:

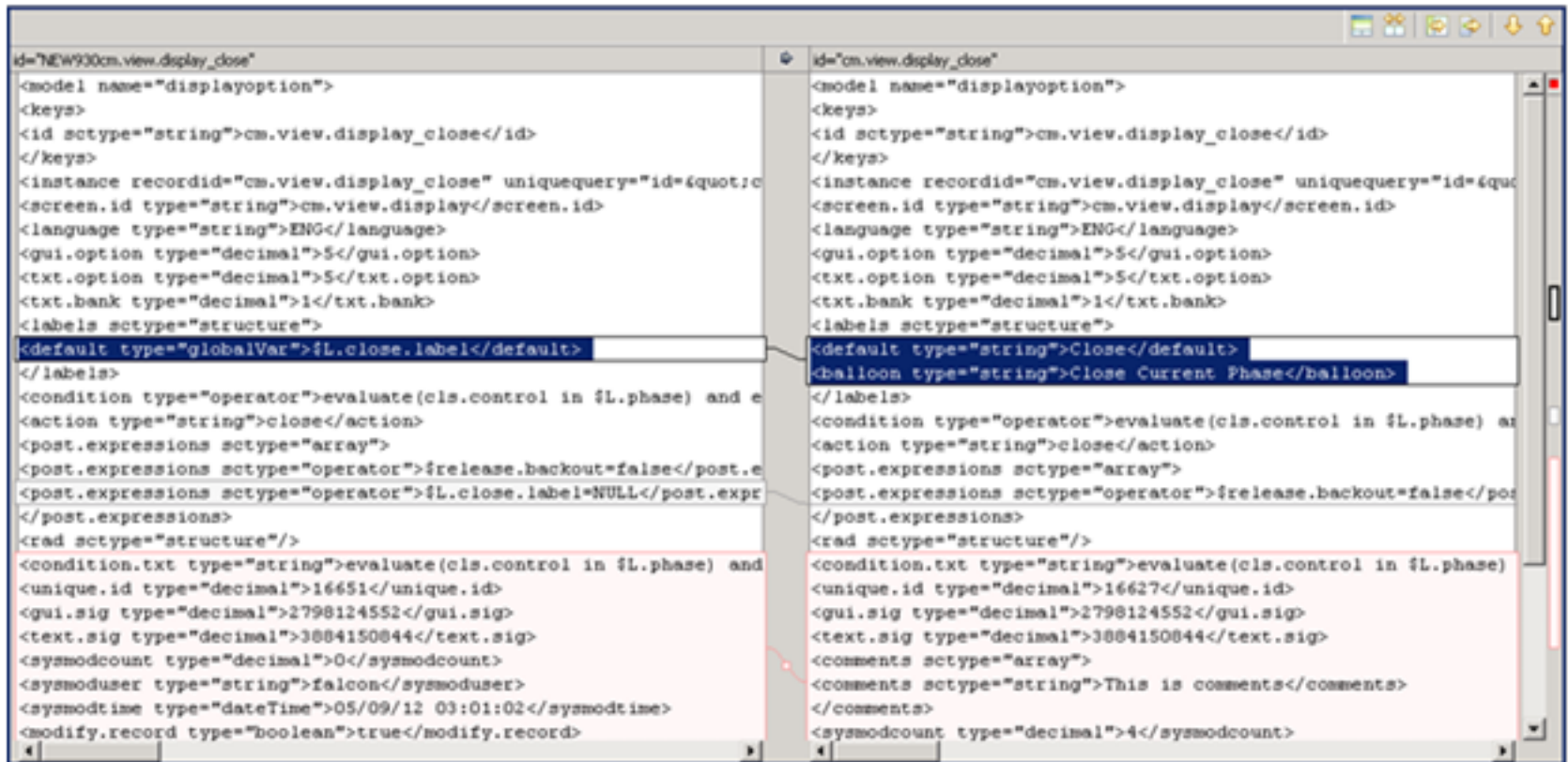
- It allows you to identify where changes are located before you can visually compare the objects and to make changes manually, such as in format records.
- It allows you to identify and merge changes directly between objects, such as ScriptLibrary records.

To use the Merge tool, follow these steps:

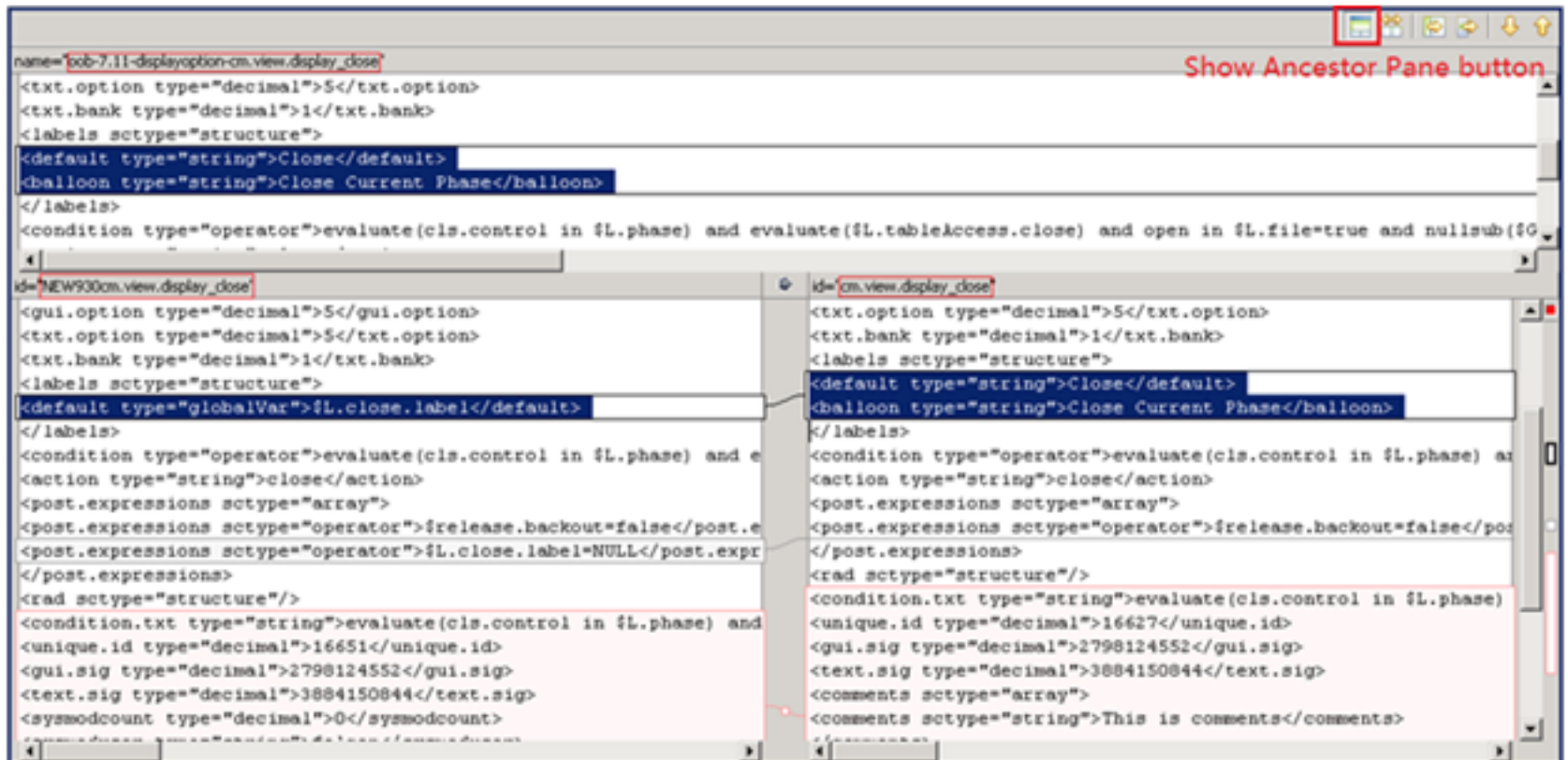
1. In the UPGRADE UTILITY section, click **View/Merge Upgrade Results**.
2. In the **Result** drop-down list, select **Renamed**.

Note: The Two-way/Three-way Merge tool is available only for “Renamed” records.

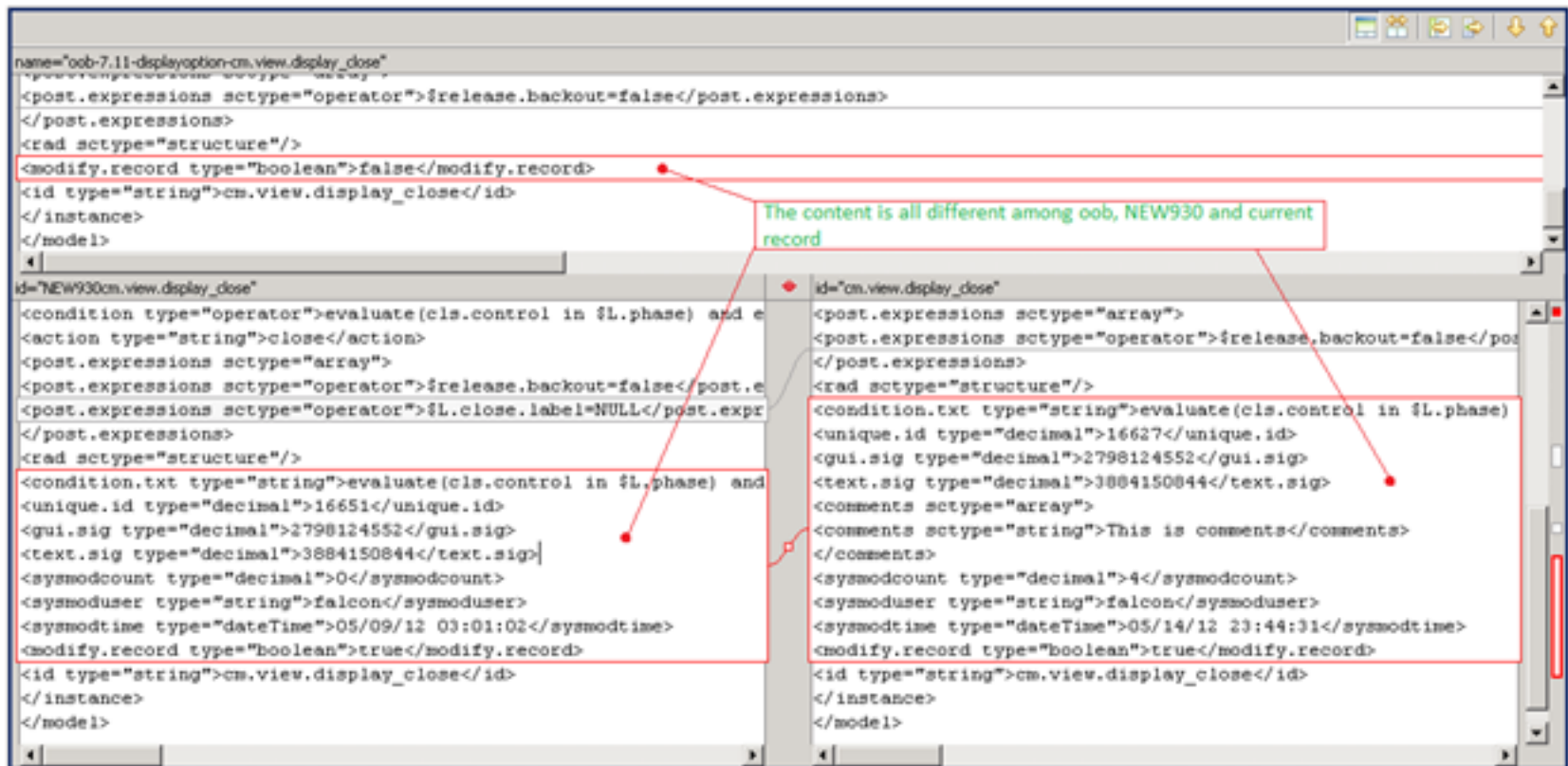
3. Click **Search**.
4. A list is returned that displays all the result records of the “Renamed” type. Select a record that you want to examine, click **More** or the **More Actions** icon, and then click **Merge**.
5. The current default merge mode is Three-Way Merge mode. The merge option is not available for format records. Instead, you can click **Compare** option from the **More Actions** menu to start the merge tool in read-only mode. You can use this mode to identify the differences in the side-by-side view or three-way view and then merge records manually in Forms Designer.



- a. In Three-Way Merge mode, click the **Show Ancestor Pane** button to show the base record reference. Click the button again to hide the base record reference.



- b. In Three-Way Merge mode, if the records of base, upgrade, and customer versions are all different, the background color is red. If you put the cursor into the records with the red background and then click the **Copy Current Change from Left to Right** button, the selected records from the left pane will be appended to selected records in the right pane.

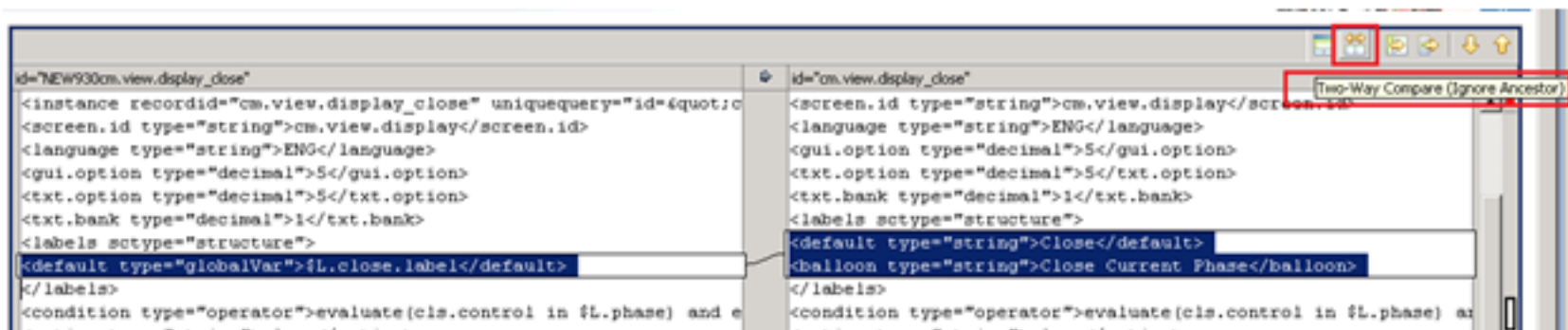


- c. In Three-Way Merge mode, if the records of the customer version are identical to the base version, but different from the upgrade version, the background color is blue. If you put the cursor into the records with the blue background, and then click the **Copy Current Change from Left to Right** button the selected records from the right pane will be replaced by the selected records from the left pane.
- d. In Three-Way Merge mode, if the records on the left contain red background records, and you then click the **Copy All from Left to Right** button, the records in the right pane with blue background will be replaced with selected records from the left pane.

Note: The right records with red background will not be changed. To do this, you will need to switch to Two-Way Merge mode to use Copy All from Left to Right feature.

6. To enter Two-Way Merge mode, click the Two-Way Compare (Ignore Ancestor) button. In this mode, the Show Ancestor Pane button is disabled.

When you do this, the button label changes to Three-Way Compare. Click this again to revert to Three-Way Compare mode.



- a. In Two-Way-Merge mode, if one record differs upgrade and customer versions, you can click **Copy Current Change from Left to Right** button to replace a selected record from the left pane to the right pane.
- b. In Two-Way-Merge mode, click **Copy All from Left to Right** button to replace all records in the right pane with the records from the left pane.

Using a third party tool to visually compare objects

You may also visually compare the three versions of each object using a three-way compare and merge tool outside HP Service Manager, and then merge them manually in Service Manager. For example, you can use a tool, such as KDiff3 for Windows, to compare and merge objects.

To download and learn about KDiff3, visit the [KDiff3 Web site](#).

A brief example of using KDiff3 to compare the three versions of an object is provided in the following steps:

1. Install KDiff3 on the HP Service Manager server host.
2. Open KDiff3. For more information, refer to the KDiff3 documentation.
3. For the A(Base) parameter, specify the path to the Upgrade\3waymerge\work\base folder.
4. For the B parameter, specify the path to the Upgrade\3waymerge\work\customer folder.
5. For the C parameter, specify the path to the Upgrade\3waymerge\work\upgrade folder.
6. Click **OK**.
7. Navigate the folder structure and double-click the file that is named after the object you want to merge.
8. Compare the three versions of the object in the 3-way compare view.
9. Manually apply the changes you have identified to the object in Service Manager.

Using the Auto Merge and Revert options

During upgrade processing, the Upgrade Utility attempts to merge your objects with the corresponding objects provided with the upgrade. You can search for records with a result type of "Auto Merged" in the Upgrade Results list to review these objects.

Note: An auto-merged object needs to be thoroughly tested for syntax and functional integrity.

If you encounter issues with objects that have been auto-merged or reconciled, you can use the **Revert** feature from the More Actions menu to restore "Auto Merged" or "Renamed" objects, or "Replaced" Application Cluster objects to their previous states. Use **Revert** to restore one object and **Mass Revert** to restore multiple objects. After restoring an object, you can also re-attempt to auto-merge that object using the **Auto Merge** or **Mass Auto Merge** option from the More Actions menu.

Note: If you do not choose to use the auto-merge option, you must manually unzip the OOB data to the same folder in which you extracted the Merge Tool. If you do choose the auto-merge option, the OOB data is extracted automatically by the Merge Tool.

Using the Mass Choose Upgrade feature

During the Upgrade process, you can use the Mass Choose Upgrade feature to overwrite your systems old objects with the newer versions from the upgrade utility. You can use this feature to quickly update the objects of the following statuses, which are generated during the upgrade:

- Auto Merged
- Renamed
- Previously Reconciled
- Reconciled

You can use this feature to quickly update Application Cluster objects of the following statuses:

- Kept Customer
- Kept Customer Non-OOB
- Renamed

To use the Mass Choose Upgrade feature, follow these steps:

1. In the UPGRADE UTILITY section, click **View/Merge Upgrade Results**.
2. In the Result drop-down list, filter the set of objects (Auto Merged; Renamed; Previously Reconciled; Reconciled) on which you wish to use the Mass Choose Upgrade feature and then click **Search**.
3. If more than two objects exist in the resulting search, click the **Mass Choose Upgrade** button from **More Actions** menu in the returned list and then click **Yes**.

After you click **Yes**, the objects that you selected will be updated with the contents of the newer versions from the upgrade utility.

Using the Mark as Reconciled feature

During the Upgrade process, you must mark conflicting objects as “Reconciled” after resolving each conflict. To help with this process, you can use the Mass Mark as Reconciled feature to mark multiple objects as “Reconciled.” You can use this feature on objects with the following statuses:

- Auto Merged
- Renamed
- Previously Reconciled

To use the Mass Mark as Reconciled feature, follow these steps:

1. In the UPGRADE UTILITY section, click **View/Merge Upgrade Results**.
2. In the Result drop-down list, filter the set of objects (Auto Merged; Renamed; Previously Reconciled) on which you wish to use the Mass Mark as Reconciled feature and then click **Search**.
3. If more than two objects exist in the resulting search, click the **Mass Mark as Reconciled** button from the **More Actions** menu and then click **Yes**. After you click **Yes**, all objects that you selected will be marked as “Reconciled” and removed from current conflict list.

Note: If only one object exists in the resulting search, or if you want to resolve conflicts for the selected objects individually, you can use the **Mark as Reconciled** button from the **More Actions** menu on each object instead of the **Mass Mark as Reconciled** button.

Step 3: Perform additional manual tasks

This section lists changes that cannot be automated by the Upgrade Utility and changes that are required only for certain customers. Make these changes before testing and backing up your system.

The Upgrade utility does not automatically clean up artifacts that were left over by the upgrade, such as objects that were prefixed with PRE<version_number> or NEW935, which are copied and renamed from pre-upgrade objects. These objects must be deleted from the exported list. Otherwise, the system may not work as expected. To make the system work as expected, the purge tool provides a function to clean up artifacts that were left over by the upgrade. To run the purge tool, follow these steps:

1. Type `*aapm.upgrade.purge` in the HP Service Manager command line and then press **Enter**.
2. Click **I'm done, and I want to remove the duplicate data prefixed by "NEW", "PRE" and "OLD"**.
3. Click **OK**.

Or, you may manually delete those objects against the exported list. To find those objects, search the Upgrade Results list for records with a result type of "Auto Merged" "Previously Reconciled" "Reconciled" or "Renamed" and then export the list to an Excel file.

Step 4: (Optional) Modify automatically fixed data

The Upgrade Utility scans the existing records for duplicates when imposing a "Unique" or "No Duplicates" key on a field. If duplicates are found, the utility fixes the duplicates and continues the upgrade process. To do this, it differentiates duplicate items by appending suffixes such as -dup1, -dup2...-dupx.

To correct the auto-modified values to your own values, follow these steps:

1. Open the sm.log file.
2. Search for -dup and locate a message that resembles the following:

```
RTE I scan: fix duplicates, changed column COLUMN_NAME in TABLE_NAME to new
value: ORIGINAL-dup1
```

This message indicates that duplicates were found on the `COLUMN_NAME` field of the `TABLE_NAME` table, and all duplicates other than the first instance were changed from `ORIGINAL` to `ORIGINAL-dup1`, `ORIGINAL-dup2`, and so on.

3. Change the auto-modified value to your own value, either by using the HP Service Manager client or by directly updating data in the RDBMS.
4. Search for the next occurrence of `-dup` to fix the next duplicate item.
5. Continue to follow *steps 2* through *step 4* to change all the values that were updated by the upgrade utility.

Step 5: Return the system to normal operation

After the upgrade, the system may exhibit abnormal behavior until you return it to its normal operating environment.

Note: All upgrade-related files should be removed from the system after successful completion of the upgrade. For information on removing these files, see ["Step 3: Perform additional manual tasks" on page 71](#).

To return to a normal operating environment, follow these steps:

1. Log out from HP Service Manager.
2. Stop the Service Manager server.
3. Remove the comment from the `system.start` entry from the `sm.cfg` file.
4. Restore all the parameters that you updated in `sm.ini` and `sm.cfg` to their original state.
5. Add all parameters that are documented as necessary for your upgraded system to run properly.
6. Restart the Service Manager server.
7. Log on to Service Manager.
8. Wait for the background processes to finish.

9. Regenerate the IR keys on the incidents table. Regenerating an IR key may take a long time, so you can schedule this regeneration to occur during scheduled maintenance. For more information, see the instructions on how to regenerate IR keys in the Service Manager Help Center documentation.

Note: Service Manager does not recompile indexes in your RDBMS. If your RDBMS is not configured to recompile indexes automatically after index changes, you must recompile your indexes manually.

Step 6: Test the system (functional testing)

After you resolve all conflicts, test the upgraded system and verify that it functions properly. If there are problems that you cannot resolve, contact HP Customer Support.

Step 7: Back up the system

Make a checkpoint backup of the data files to enable you to restore from this point, if necessary. Refer to the documentation for your RDBMS for backup instructions.

Chapter 6: Creating and applying the custom upgrade

Now you have resolved all the exceptions and conflicts. It is necessary to package all the reconciled objects together into a "custom upgrade" so that they can be moved into the production environment automatically.

Topics in this section include:

- ["Step 1: Build a custom upgrade" below](#)
- ["Step 2: Apply the custom upgrade to the test system" on page 68](#)
- ["Step 3: Perform additional manual tasks" on page 71](#)
- ["Step 4: Test the custom upgrade" on page 72](#)
- ["Step 5: Apply the custom upgrade to the production system" on page 73](#)
- ["Step 6: Clean up upgrade objects" on page 74](#)

Step 1: Build a custom upgrade

If you have followed all the steps to this point, you have already run the upgrade against the duplicate system you created of your production system, and you have performed reconciliation for that system. This section describes how to build a custom upgrade, which is then applied to your test system and production system.

To build the custom upgrade, follow these steps:

1. Log on to the reconciled development system.
2. Before you begin to build the custom upgrade, you need to back up (or duplicate) the production system. For information on duplicating your system, see ["Step 4: Duplicate the production environment" on page 20](#).
3. Create a folder for the custom upgrade on the HP Service Manager server. You can assign any

name you like to this folder. However, for documentation purposes, this folder will be referred to as the CustomUpgrade folder. Ensure that the CustomUpgrade folder is empty.

Note: If you are connecting to the Service Manager server from a client that is installed on a remote client computer, make sure that the folder is created on the Service Manager server instead of the client computer.

4. Type `smupgrade` in the Service Manager client command box, and press **ENTER** to launch the Upgrade Utility.
5. In the **UPGRADE UTILITY** section, click **SERVICE PACK**.
6. In the **Upgrade Processing** section, click **Create an Upgrade**.

The Upgrade Utility automatically checks for duplicate records prefixed with "PRE", "NEW" or "OLD".

If no such data is found, you are directed to *step 9* below. If such duplicate data is found, you are directed to *step 7*.

7. Click **Next**. The Upgrade Utility asks you to confirm the purge operation.
8. Select **Yes** to purge the duplicate data.

If you select **No**, you will need to manually perform the purge operation as described in "[Step 3: Perform additional manual tasks](#)" on page 71.

9. On the Welcome screen, click **Next**.
10. The system displays the following message:

Message: What is the name of this release?

Specify a name for the custom upgrade package, and click **Next**.

Example: SM935.

11. The system displays the following message:

Message: Please select which currently supported language(s) in addition to English are to be included in this build

On this screen, a list displays all the non-English languages installed on the system. By default, these languages are set to **true**. Select **false** for the languages that you do not want to package into the custom upgrade, and click **Next**.

Note: You cannot go back and rerun the upgrade to select additional languages. You must ensure that all applicable languages have **true** selected.

12. The system displays the following message:

Message: Where do you want the upgrade files to be exported?

Type the fully-qualified path to the folder where the Upgrade Utility should create files, and then click **Next**. This should be the path to the empty CustomUpgrade folder that you created in *step 3*.

13. The system displays the following message:

Message: Which patch file should be used to build the upgrade?

Select the most recent patch record from the menu (**SM93**), and click **Next**.

14. The system displays the following message:

Message: Take which action?

Keep the default setting **Complete Upgrade Build**, and click **Next**.

Note: The other options are not available for use at this time.

15. The system displays the following message:

Message: Warning. This process will destroy any existing upgrade definitions on file. Proceed?

Click **Yes** to continue.

16. When you receive a "Finished creating the transfer files for the upgrade" message, the Upgrade Utility has finished the data packaging.

Upgrade Utility logs and error messages

When building the custom upgrade, the Upgrade Utility creates a set of log files, which reside in the same directory as the upgrade files. The following table describes the contents of the log files during this step.

List of upgrade logs

Log file	Contents
detail.log	This file contains specific information about the upgrade, including the following: <ul style="list-style-type: none"> • All information in transfer.log and upgrade.log • Name of the file being purged, for example, “2014-03-20 13:58:32 dbdict: upgradestatus is purged.” • Progress of signature creation, for example, “2014-03-20 14:47:36 Created 100 signatures for Object on version SM93” • Building distribution information, for example, “2014-03-20 14:55:07 Building Distribution object for Application Cluster Action.run”
transfer.log	This file contains information about the object being transferred by the upgrade, for example, “2014-03-20 15:12:27 Initiating an export of scmessage on query " ((class="error" and message.id isin {"10"})) and syslanguage~="xxx""
upgrade.log	This file contains information about where the upgrade is at any point, including the following: <ul style="list-style-type: none"> • Starting and ending of each sub-phase, for example, “2014-03-20 14:47:32 **** Start Phase [Pre Create Action Check] ****” • Main activities during each sub-phase, for example, “2014-03-20 14:47:35 Signaturing records.” • Name of the file being exported, for example, “2014-03-20 15:11:37 Exporting: table = Object query = 'true'”

Step 2: Apply the custom upgrade to the test system

You need to apply the newly-created custom upgrade to your test system for user acceptance testing.

Note: If you experience problems, such as a power failure or a network connection error while upgrading the system, you need to restore the database before attempting to run the upgrade again.

To upgrade the custom upgrade, follow these steps:

1. On the test system, which is a copy of your production system, complete all the preparation tasks in ["Preparing for an upgrade" on page 19](#).
2. Load preupg.bin and transfer.bin.

Note: You can load these two files with the steps that you followed in ["Step 1: Load the application upgrade files" on page 24](#) except that, instead of using the files that you extracted from the installation package, you must use the files in your CustmsomUpgrade folder.

Caution: Before loading these files, you also need to disable the **Client side load/unload** option from **Window > Preferences > HP Service Manager**.

3. Type `smupgrade` in the Service Manager command line, and then press **Enter** to launch the Upgrade Utility.
4. In the **UPGRADE UTILITY** section, click **SERVICE PACK**.
5. In the **Upgrade Processing** section, click **Apply an Upgrade**.
6. On the Welcome screen, verify that the **Applications version upgrading from** field displays your current application version, and then click **Next** to continue.

Note: If this screen does not display the correct version, do not continue with the upgrade. Instead contact HP Software Customer Support.

7. The system displays the following message:

Message: Please select the language(s) in addition to English to be upgraded.

You see a list that displays all the supported non-English languages. By default, the languages that are installed on your Service Manager system are set to **true**. Select **false** for the languages that you do not want to upgrade, and click **Next**.

8. The system displays the following message:

Message: Are you going to use this system to create a custom upgrade for another system?

We are applying a custom upgrade that includes objects that you consider final, so select **No**, and then click **Next**.

9. The system displays the following message:

Message: What is the fully qualified path to the HP Service Manager Upgrade patch files?

By default, the text box displays the fully qualified path to the CustomUpgrade folder on the Service Manager server. Keep the path unless it does not point to the correct folder, and then click **Next**.

10. The system displays the following message:

Message: When HP Service Manager Upgrade doesn't recognize an object it should

We are applying a custom upgrade that includes objects that you consider final, so select **Replace your version of the object with the HP Service Manager's version of the object**, and then click **Next**.

11. The upgrade is now ready to start. Click **Next**.
12. When you are asked whether you want to proceed, click **Yes**.
13. The Upgrade Utility displays the status when the upgrade is being processed.
14. When you receive an "UPGRADE IS COMPLETE" message, the Upgrade Utility has finished the data processing and you can follow the instructions in the message to complete the next steps. After you close the message dialog, you are automatically logged out.
15. Restart the server and log back in to the client.
16. Open the scversion table in the Database Manager, and verify that the Application Version field is 9.35.00xx. If this field displays a value other than 9.35.00xx, check the log files to identify the issue that occurred.

Note how long it takes to apply the custom upgrade, so you will know how long the production system will be unavailable during the production upgrade. You can check the log file for an estimate.

Upgrade Utility logs and error messages

When applying the custom upgrade to the test system, the Upgrade Utility creates a set of log files, which reside in the same directory as the custom upgrade files.

The contents of these log files are similar to those in the log files when running an out-of-box upgrade. See ["Upgrade Utility logs and error messages" on page 31](#).

Tables and records that are not upgraded by the Upgrade Utility

The Upgrade Utility does not automatically upgrade all tables and records. The patches record lists the tables and records that are packaged into the custom upgrade. Customizations made to any other tables or records will not be part of the custom upgrade. To make sure that the objects that you have reconciled are moved to the production system, verify that these objects are in the patches record. If not, you can do one of the following:

- Create an unload file containing those objects by adding them to an unload script or using the standard HP Service Manager Unload/Export Facility,
- Make the same changes manually by directly modifying the objects on the production system. For records that you might have deleted, you can either build a purge script for those records or delete the records manually on the production system.

Step 3: Perform additional manual tasks

This section lists changes that cannot be automated by the Upgrade Utility and changes that are required only for certain customers. Make these changes before testing and backing up your system.

The Upgrade utility does not automatically clean up artifacts that were left over by the upgrade, such as objects that were prefixed with OLD<version_number> which are copied and renamed from pre-upgrade objects. These objects must be deleted from the exported list. Otherwise, the system may not work as expected. To make the system work as expected, the purge tool provides a function to clean up artifacts that were left over by the upgrade. To run the purge tool, follow these steps:

1. Type `*aapm.upgrade.purge` in the HP Service Manager client command text box and then press **Enter**.
2. Click **I'm done, and I want to remove the duplicate data prefixed by "NEW", "PRE" and "OLD"**.
3. Click **OK**.

Or, you may do it manually. To find those objects, search the Upgrade Results list for records with a result type of "Forced" and then export the list to an Excel file. To make added or upgraded display options work as expected, you must manually re-save all the related display screens. To find those display screens, search the Upgrade Results list for display options records with a result type of "Added" or "Forced" and export the list to an Excel file.

Step 4: Test the custom upgrade

After you apply the custom upgrade on the test system, perform user acceptance testing for all features, especially customized applications. Test the upgraded system with the new HP Service Manager client to verify any changes you have made in reconciliation. If the upgrade process has any problems, you need to contact HP Customer Support. After you complete testing of the upgraded system, you can use it to upgrade your production system.

To test the custom upgrade, follow these steps:

1. Return the system to a normal operating environment.
2. Install and configure the Service Manager client for the target version (see the instructions in the *HP Service Manager Installation Guide*).
3. Use the new Service Manager client to log on.
4. Review the features described in the Service Manager 9.35 Help Center.
5. Use the new Service Manager client to thoroughly test the upgraded system. Test all features that your users will access. Pay particular attention to areas that were modified on your system.

Step 5: Apply the custom upgrade to the production system

After you test the custom upgrade on the test system, you need to apply the newly-created custom upgrade to your production system. This process is identical to the one you followed when applying your upgrade to your test system.

Note: Do not apply an upgrade to your production system if it has not been thoroughly tested. If issues were found in the custom upgrade, HP recommends you to fix the issues in the development system and re-create the customer upgrade.

To apply the custom upgrade to the production system, follow these steps:

1. Make sure the production system is not be available to users while you are applying the custom upgrade.
 - a. Have all users log out of the server.
 - b. Prevent users from logging into your HP Service Manager server by running the **sm -quiesce:1** quiesce command from the operating system's command prompt.
2. Ensure the upgrade files you created are accessible to the production system (the files are located on the same server).
3. If you transfer the files to your production system by FTP, set FTP to binary mode.
4. Apply the customer upgrade to the production system.

Note: If you experience problems, such as a power failure or a network connection error while upgrading the system, you need to restore the database before attempting to run the upgrade again.

5. Log out from your Service Manager server, and then log in again.
6. Allow users to log in to the server by running the **sm -quiesce:0** quiesce command from the operating system's command prompt.

Step 6: Clean up upgrade objects

After you successfully apply the custom upgrade to your production system, you can run the purge tool to remove temporary objects that were generated by the Upgrade Utility.

To launch the purge tool, follow these steps:

1. Type `*aapm.upgrade.purge` in the HP Service Manager command line, and then press **Enter**.
2. Click **I'm done, and I want to remove the upgrade files completely**.
3. Click **OK**.

Note: Any tailored objects that were updated by the Upgrade Utility are backed up as a revision. If issues occur after going live, these objects can be quickly reverted back to their original tailored versions. After a period of time, you may want to delete the old revision objects.

Chapter 7: Troubleshooting

Before you contact HP Service Manager Customer Support, try the following troubleshooting instructions to identify and resolve your issues.

Troubleshooting: The Upgrade Utility appears to stop responding

Symptoms

The Upgrade Utility may appear unresponsive during the upgrade process. This issue may exhibit the following symptoms:

- The Windows Task Manager indicates that Service Manager client is not responding.
- The Upgrade Utility does not show the progress after you click **Next** to start the upgrade execution.
- The Upgrade Utility appears to stop at a percentage of completion.

Resolution

This is normal and does not indicate a problem with the upgrade. Additionally, the percentage on the status screen does not accurately indicate the actual progress.

Troubleshooting: The client session was terminated during an upgrade

Symptoms

The upgrade failed with "Session no longer valid" error when running in foreground mode. This issue is most likely to occur when you are creating or applying a custom upgrade.

The client session was terminated during an upgrade. The HP Service Manager client may temporarily lose heartbeat when the Upgrade Utility is running. If the server cannot detect the heartbeat for a certain amount of time, it disconnects the client session.

Resolution

To resolve this issue, restore the database to the latest pre-upgrade state, add the `sessiontimeout:1200` parameter to the `sm.ini` file, and then restart the upgrade. See also ["Step 5: Update Service Manager configuration files" on page 21](#).

Note: We recommend that you set the timeout period to a length of time that is long enough for an upgrade phase to complete.

Troubleshooting: Unexpected errors during an upgrade

Symptoms

An unexpected error stopped the upgrade, such as the HP Service Manager server running out of memory, stack overflow, power outage, and network failure.

Resolution

Fix the issue that stopped the upgrade, restore the database to the latest pre-upgrade state, and then restart the upgrade.

Troubleshooting: Upgrade failed with a "Not enough shared memory available" error

Symptoms

The upgrade process ended abruptly when you were applying an upgrade, and the following error message was logged into the `sm.log` file:

```
E big_alloc: Not enough shared memory available to allocate <number> bytes
```

Resolution

Restore the database to the latest pre-upgrade state, increase the size of the shared memory (see ["Step 5: Update Service Manager configuration files" on page 21](#)), and then restart the upgrade.

Troubleshooting: Database transaction log full

Symptoms

The process ended abruptly when you were loading data or applying an upgrade. The sm.log file contains error messages that resemble the following:

```
[Microsoft][ODBC SQL Server Driver][SQL Server] The log file for database 'DB_Name' is full.
```

```
Back up the transaction log for the database to free up some log space.  
(message,add.schedule)
```

```
An error occurred while attempting to add a record (file.load,add.record.0)
```

Resolution

Running an upgrade generates a huge number of transactions and this is likely to make the transaction log full. Restore the database to the latest pre-upgrade state, refer to the documentation for your RDBMS to increase the database transaction log size or enable auto-growth, and then restart the upgrade.

Troubleshooting: Integrations do not work after an application upgrade

Symptoms

After you upgrade your applications to Service Manager 9.35, certain existing integrations do not work correctly.

Resolution

Certain integration fields that were optional in the old application version have been made required in the new Service Manager 9.35 applications. Existing integrations that do not have those fields populated will become invalid. Therefore, you must remove and re-create these integrations in the Integration Manager. These integrations include the following:

- Release Control integration
- BSM OMi integration

For more information about your specific integration, see the Integrations section in the Service Manager Help.

Troubleshooting: Automatic merge fails

Symptoms

The Automatic Merge task fails during the upgrade and you receive the following error message:

Failed to unzip <zip file path>. Auto Merge skipped.

This error message indicates that automatic merge was skipped because of a failure to unzip the required zip file. The Upgrade Utility skips the Automatic Merge task and continues the upgrade process.

Resolution

To rerun the Automatic Merge task after running the Upgrade Utility, follow these steps:

1. In the Upgrade\3waymerge\oob folder, find the zip file named after the version that you selected for the Base Version when running the Upgrade Utility.
2. Extract the folder named after the Base Version that you previously selected, from inside the zip file to the Upgrade\3waymerge\oob folder. For example, if you selected **9.2** for the **Base Version** previously, extract the **9.2** folder from inside **9.2.zip**, and place the extracted folder (**9.2**) in the Upgrade\3waymerge\oob folder.
3. Open the Upgrade Results list and search for records with a type of "Renamed."
4. Select the objects that you want to merge, and click **Mass Auto Merge** from the More Actions menu.

Troubleshooting: Assignment objects are included in the custom upgrade

Symptoms

When creating a custom upgrade, assignment group records are included in the upgrade.

Resolution

To avoid assignment objects from being exported into the custom upgrade package, follow these steps:

1. Before creating the custom upgrade package, go to the patch's table to change the **Query** setting of the assignment dbdict.
 - a. Execute the **smupgrade** command from the Service Manager command line.
 - b. Click **SERVICE PACK**.
 - c. Click **Update Patch Definitions**.

- d. Select **SM93**, and press **Enter**.
 - e. Locate the **assignment** dbdict.
 - f. Change the **Query** to `false`.
 - g. Save the change.
2. Create the custom upgrade package.

Note: In the data folder, `upgradeassignment.dta` will still be generated. However, there is only `upgradeassignment dbdict` structure data which contains no assignment objects.

Chapter 8: Data scan option

Before you run an upgrade, you can scan a portion of your dataset for certain types of data that may cause issues following the upgrade. The data scan logs information into the sm.log file, including how many data records were scanned, and which records were automatically updated.

Currently, this option allows you to scan for two types of problematic data:

- Null values in fields applied with certain keys
- Mismatches between the data type defined on the field and the data type of the field value

The option available in the Upgrade Utility does not allow you to specify tables that are scanned. The tables that are scanned include the list of tables as noted in the latest patches record. To view the patches record, open the **patches** table by clicking **SERVICE PACK > Update Patch Definitions** in the Upgrade Utility.

For more information about the rtecall functions used during the data scans, and about how you can implement these functions to scan for additional tables, such as **probsummary**, see the latest *HP Service Manager Programming Guide*.

Run the data scan option

To run the data scan option, follow these steps:

1. Make sure you have already loaded the application upgrade files into the system. See "[Step 1: Load the application upgrade files](#)" on page 24.
2. Type `smupgrade` in the HP Service Manager command line, and then press **Enter**.
3. In the **DATA SCAN UTILITY** section, click **Scan for and Fix Incorrect Data**.
4. Click **Next** and follow the instructions.
5. When the process is complete, you receive a report of the tables that were scanned and the incorrect data that was found and corrected. Results information is logged into the `datascan.log` file, which resides in the folder where you put the `transfer.bin` file.

View the data scan results

Search the sm.log file for messages relating to the data scan.

Null values disallowed by keys

The data scan option scans for null values that violate the restrictions imposed by a "No Nulls" or "Unique" key. Then the utility:

- Removes the record if null values violate a "Unique" key, or
- Replaces one of the null values with a default value if null values violate a "No Nulls" key.

To modify the auto-modified values to your own values, follow these steps:

1. Open the sm.log file.
2. Search for **deleted a record** or **updated a record** to locate a message that resembles the following:

Message	Description
scan: scan for nulls, deleted a record that contains null values on a "Unique" key field, table = <i>TABLE_NAME</i> , record = <i>RECORD_CONTENTS</i>	This message indicates that the utility has removed a record. <i>TABLE_NAME</i> shows the name of the table, and <i>RECORD_CONTENTS</i> shows all the fields and values of the removed record.
scan: scan for nulls, updated a record that contains null values on a "No Nulls" key field, table = <i>TABLE_NAME</i> , key = <i>RECORD_IDENTIFIER</i>	This message indicates that the utility has replaced a null value with a default value. <i>TABLE_NAME</i> shows the name of the table, and <i>RECORD_IDENTIFIER</i> shows the primary key and its value of the updated record.

3. Change the auto-modified value to your own value or restore the removed record with valid field values, either by using the Service Manager client or by directly updating data in the RDBMS.
4. Search for the next occurrence of **deleted a record** or **updated a record** to fix the next auto-modified record.
5. Continue to follow *steps 2* through *step 4* to change all the values that were updated by the upgrade utility.

Data type mismatches

The data scan option scans for mismatches between the data type defined on the field and the data type of the field value.

To modify the auto-modified values to your own values, follow these steps:

1. Open the sm.log file.
2. Search for **scan for inconsistent data types, table** and locate a message that resembles the following:

Message	Description
<p>scan: scan for inconsistent data types, table: "TABLE_NAME", key: "RECORD_IDENTIFIER", field: "FIELD_NAME", value "ORIGINAL_VALUE", type: ORIGINAL_TYPE, value changed to: "NEW_VALUE", type: NEW_TYPE.</p>	<p>This message indicates that the utility has changed the value of a field in a record.</p> <ul style="list-style-type: none"> ■ TABLE_NAME shows the name of the table. ■ RECORD_IDENTIFIER shows the primary key and its value of the updated record. ■ FIELD_NAME shows the name of the field that was updated. ■ ORIGINAL_VALUE shows the original value of the field that was updated. ■ ORIGINAL_TYPE shows the original type of the field that was updated. ■ NEW_VALUE shows the new value of the field that was updated. ■ NEW_TYPE shows the corrected type of the field that was updated.

Message	Description
<p>scan: scan for inconsistent data types, table: "TABLE_NAME", key: "RECORD_IDENTIFIER", field: "FIELD_NAME", value "ORIGINAL_VALUE", type: ORIGINAL_TYPE, type changed to NEW_TYPE.</p>	<p>This message indicates that the utility has changed the type of a field in a record.</p> <ul style="list-style-type: none"> ■ TABLE_NAME shows the name of the table. ■ RECORD_IDENTIFIER shows the primary key and its value of the updated record. ■ FIELD_NAME shows the name of the field that was updated. ■ ORIGINAL_VALUE shows the original value of the field that was updated. ■ ORIGINAL_TYPE shows the original type of the field that was updated. ■ NEW_TYPE shows the new type of the field that was updated.

3. Change the auto-modified value to your own value, either by using the HP Service Manager client or by directly updating data in the RDBMS.
4. Search for the next occurrence of **scan for inconsistent data types, table** to fix the next auto-modified record.
5. Continue to follow *steps 2* through *step 4* to change all the values that were updated by the upgrade utility.

Chapter 9: Updating languages at a later time

After you initially run the Upgrade Utility with only part of the languages selected, there are two points later in the upgrade lifecycle where you can specify additional languages to be updated:

- **Before you create a custom upgrade** (then the updates to the selected additional languages will be included in the custom upgrade package).
- **After you apply a custom upgrade** (to perform an upgrade that updates only the languages).

In this case, first create copies of the production system to be used as development systems and test systems. Then, run the Upgrade Utility, perform conflict resolution, and create a custom upgrade on the development system, which includes only updates to the languages. Eventually, apply the custom upgrade to your production system.

Update additional languages before creating a custom upgrade

To update additional languages before creating a custom upgrade, follow these steps:

1. Finish conflict reconciliation before you continue, because the Upgrade Results list will be cleaned up when you update additional languages.
2. Load the `preupg.bin` and `transfer.bin` files into Service Manager. See "[Step 1: Load the application upgrade files](#)" on page 24.
3. Type `smupgrade` in the Service Manager command line, and then press **Enter** to launch the Upgrade Utility.
4. In the **UPGRADE UTILITY** section, click **SERVICE PACK**.
5. In the **Upgrade Processing** section, click **Apply an Upgrade**.
6. On the Welcome screen, click **Next** to continue.
7. The system displays the following message:

Message: Please select the language(s) in addition to English to be upgraded.

You see a list that displays all the supported non-English languages. Some languages are already set to true. Make sure that all languages that you want to update are set to true, and then click **Next**.

8. You must complete the rest of the wizard. However, all the subsequent settings will not take effect because you are only updating the languages.
9. If you have already performed conflict resolution, you must continue to resolve additional conflicts for the language updates.

Update additional languages after applying a custom upgrade

To update additional languages after applying a custom upgrade, follow these steps:

1. Load the `preupg.bin` and `transfer.bin` files into Service Manager. See "[Step 1: Load the application upgrade files](#)" on page 24.
2. Type `smupgrade` in the Service Manager command line, and then press **Enter** to launch the Upgrade Utility.
3. In the **UPGRADE UTILITY** section, click **SERVICE PACK**.
4. In the **Upgrade Processing** section, click **Apply an Upgrade**.
5. On the Welcome screen, click **Next** to continue.
6. The system displays the following message:

Message: Please select the language(s) in addition to English to be upgraded.

You see a list that displays all the supported non-English languages. Some languages are already set to true. Make sure that all languages that you want to update are set to true, and then click **Next**.

7. Follow the wizard to complete all selections. You can select the same options as you did the first time you ran the Upgrade Utility on a development system.
8. Perform conflict resolution, create a custom upgrade, and apply the custom upgrade, as you do in a standard application upgrade.

Glossary

A

application

Applications are the Service Manager modules and their related configuration files. For example, Incident Management, Change Management, and Inventory Management are Service Manager applications.

B

BLOB/Image

BLOB is a data type for binary large objects in a database system. In certain RDBMS systems like Oracle, this binary data type is called BLOB. In other RDBMS systems like Microsoft SQL Server, this binary data type is called Image.

C

command box

The Service Manager command box refers to the command-line box on the top-left corner of the Service Manager client, which provides quick access to RAD applications.

compatibility matrix

A compatibility matrix defines the software, system, and platform environments that are supported by an HP software product.

conflict

A conflict refers to a situation where the Upgrade Utility identifies an existing object as "changed" (different from its out-of-box version) when updating that object. To avoid overwriting your customization, the utility adds the new version of the object along with your customized version. Until you resolve this situation, Service Manager features may not behave as expected, or may not function at all.

conflict resolution

Conflicts may occur when you are applying the new Service Manager changes to your existing Service Manager installation, which is likely to include customizations, tailoring, and patches. The conflict resolution phase of the upgrade is to reconcile the differences between the customized objects and the objects provided by the upgrade package.

custom upgrade

A custom upgrade is the upgrade build that is created on the development system after applying the upgrade files and resolving conflicts. This custom upgrade is eventually exported from the development system and applied on the production system. A custom upgrade consists of new Service Manager application files that replaced old application files, customized application files that you retained, and merged files that combine prior customization with new application functionality.

D

Data Policy

Data Policy enables System Administrators to apply default values, mandatory fields, and lookup validations to a specific table. These policies, once set, are enforced across the entire system, regardless of what form is being used to display the data.

data type mismatch

A data type mismatch refers to a situation where the data type of a field in your dbdict does not match the data type of the like-named field defined in the dbdict provided by the upgrade package.

database dictionary

Service Manager maintains a logical view of your RDBMS tables and columns in the database dictionary. The database dictionary describes each table and column in your system and how they are mapped to logical entities within Service Manager.

DDL

In restricted-access RDBMS environments, Service Manager can create database definition language (DDL) describing the changes proposed by your database dictionary records. The RDBMS administrator can then create the necessary tables and columns for Service Manager manually. After the RDBMS has the necessary tables and columns, the Service Manager administrator can then update the database dictionary records to map to the actual RDBMS objects.

detail.log

The detail.log file includes specific information about the upgrade, such as which files are being signed at any time.

development system (environment)

A development system (environment) refers to a Service Manager system that mirrors your current production environment. Use this development system to run the Upgrade Utility and build a custom upgrade. This system should not be on the same machine as the production server.

display screen

Display screens are individual records identified by a unique screen ID. The displayscreen records define the attributes of a screen and provide access to the individual records for options and events. A display screen is different from a form.

E

except.log

The except.log file includes information about any exceptions reported by the upgrade. The except.log file may have important messages about data type mismatches that you should resolve, or database dictionaries that it cannot upgrade.

exception

An exception refers to an error reported by the upgrade. It could be a data type mismatch that failed to be resolved, a dbdict

change that failed to be applied, or an unexpected error (for example, a unique key violation) that stops the upgrade. You must resolve all exceptions before you continue to resolve conflicts.

I

index regeneration

Index regeneration occurs when a database administrator recompiles indexes following changes that have been applied to Service Manager keys.

IR key

IR (information retrieval) key is a key type where the fields in the key are indexed by IR Expert. Only one IR key can be used per dbdict record or IR searches on that file do not work. You can concatenate several fields in an IR key.

K

key

Keys are abstract entities that provide a logical view of the indexes in your RDBMS. When you create Service Manager logical keys, the server creates corresponding indexes in the back-end RDBMS.

N

No Duplicates

No Duplicates is a key type where the value of the complete key must be unique in the index or the values of all fields must be null.

Nulls & Duplicates

Nulls & Duplicates is a key type where all fields can be null and the complete key value can be in the index more than once.

O

out-of-box version

The out-of-box version of Service Manager refers to a Service Manager installation that

is not customized, tailored, localized, or patched.

P

Peregrine Four (P4)

The legacy Database Management System (DBMS) that stored ServiceCenter data in a proprietary flat-file format. All HP Service Manager data must be converted to a supported Relational Database Management System (RDBMS).

production system (environment)

The production system (environment) is where the custom upgrade is applied.

R

RAD

The RAD (rapid application development) language is the native system language that Service Manager uses to communicate with its various routines and processes.

RAD Comparison Utility

The RAD Comparison Utility is a tool that compares two RAD applications and presents the differences onscreen.

RDBMS

The Relational Database Management System (RDBMS) refers to the database system that Service Manager uses for its storage, such as Oracle and SQL Server.

run-time environment (RTE)

The Service Manager run-time environment refers to the binary, load library, or executable layers of the Service Manager server.

S

signature

A signature for an HP Service Manager record is a numerical representation of the record. Any change to the contents of the record causes the signature of that record to

change, depending on the definitions in the signaturemake file.

T

tailoring

Tailoring refers to changes made to Service Manager by creating and modifying control records using Service Manager utilities. Tailoring is the normal method of adapting Service Manager to each installation's requirements. Tailoring involves no Rapid Application Development (RAD) programming or coding changes.

test system (environment)

A test system (environment) refers to a Service Manager system that mirrors your current production environment for testing purposes. Run and verify the custom upgrade on the test system.

U

Unique

Unique is a key type where at least one field in the key must not be null and the value of the complete key must be unique in the index.

unload

The native HP Service Manager export format is the unload file. An unload file stores the database dictionary of Service Manager tables in addition to records.

Upgrade Utility

Upgrade Utility refers to a set of utilities that are shipped with the new software release for upgrading to the new Service Manager 9.30 applications.

upgrade.log

The upgrade.log file includes information about the upgrade status. It indicates where the upgrade is at a specific point. This file contains only the main steps of the upgrade.

Index

*

*aapm.upgrade.purge 74

C

custom upgrade
 development system 17
 production 73
 test system 17, 68

D

database manager
 upgrade tool 15
detail.log file 32
displayscreen 48

E

except.log file 32, 41

P

preupg.bin file 69

R

resolving conflicts
 data 49
 display 47

T

transfer.bin file 14, 69

U

upgdbdct.dta 14
upgrade.inf 14
upgrade.log 33
upgrade.mak 14
upgrade.str 14
upgrade.ver 14

Send Documentation Feedback

If you have comments about this document, you can [contact the documentation team](#) by email. If an email client is configured on this system, click the link above and an email window opens with the following information in the subject line:

Feedback on Applications Upgrade Guide (from HP Service Manager 9.2x) (Service Manager 9.35)

Just add your feedback to the email and click send.

If no email client is available, copy the information above to a new message in a web mail client, and send your feedback to ovdoc-ITSM@hp.com.

We appreciate your feedback!

