

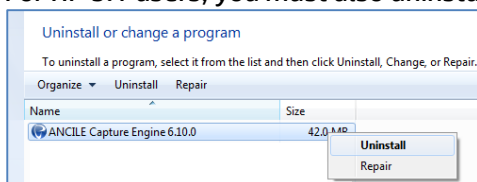


HP Adoption Readiness Tool (ART)

Installation Instructions 5.20

Important - Before you begin:

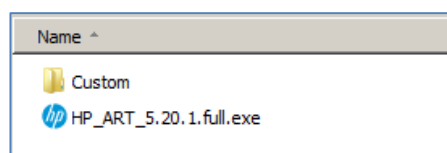
- If you have a previous version installed, please backup all content and templates to an external location. To locate your template(s), navigate from the Start menu to All Programs > HP Adoption Readiness Tool > HP Adoption Readiness Tool Resources > templates.
- Uninstall any previous version and reboot your machine prior to installing HP ART 5.2.
- For HP 5.1 users, you must also uninstall the ANCILE Capture Engine prior to your reboot and 5.2 install.



- **Important:** If you are currently using HP ART 4.4 or 5.1 and have customized your HP ART template and/or skin, it is very important to refer to the appropriate HP ART Content Conversion Guide located on the [Software Support Online \(SSO\)](#) to ensure your templates and/or skin are installed and updated properly.

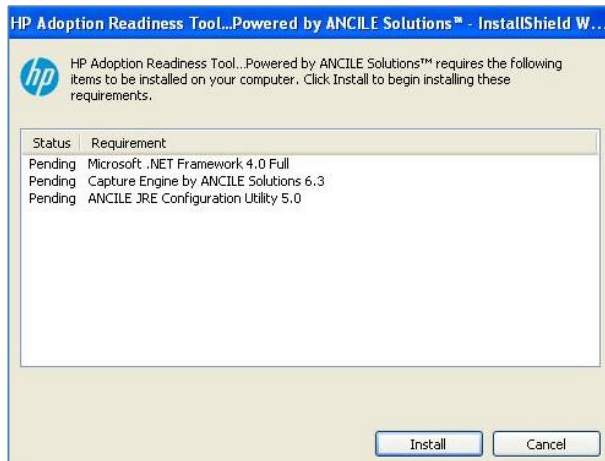
Navigate to the location of the HP Adoption Readiness Tool 5.20 Installation folder.

1. The HP ART 5.20 Installation folder includes the HP ART 5.20 executable install file, Custom folder and other HP ART DevKit documents. The Custom folder contains the ART 5.20 template and course skin that will automatically install during the ART 5.20 DevKit installation process. Do not change or rename this folder or its contents as this will prevent the template and course skin from installing.

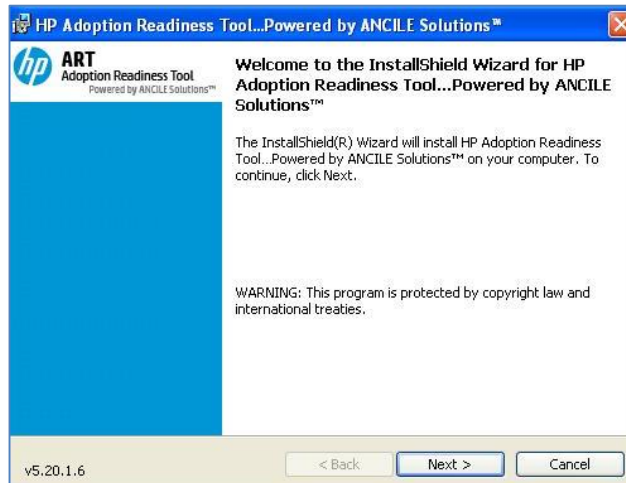


2. To begin, double-click on the .exe file and follow the prompts as they appear. If not previously installed, you might be prompted to install additional required elements.

Click **Install**.

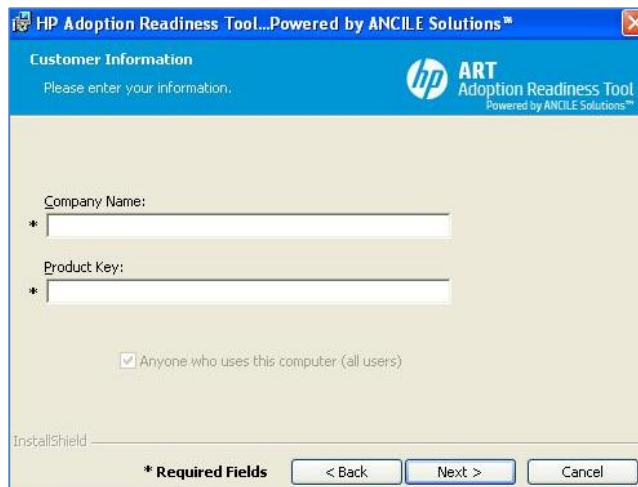


3. The Welcome window displays. Click **Next**.



4. Complete the following information and click **Next**:

Field	Description
Company Name	Enter your company or organization name delivered with the software license key. This value should be entered exactly as provided.
Product Key	Enter the product key delivered. This value should be entered exactly as provided.

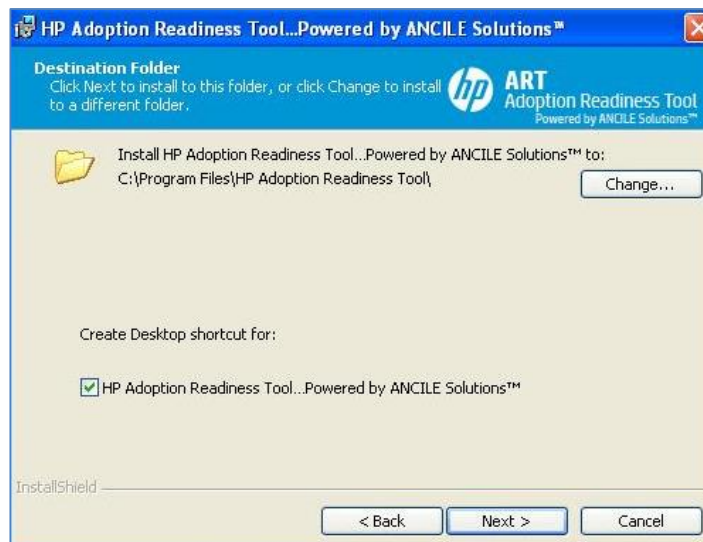


The screenshot shows the 'Customer Information' dialog box of the HP Adoption Readiness Tool. The title bar reads 'HP Adoption Readiness Tool...Powered by ANCILE Solutions™'. The dialog has a blue header with the HP logo and 'ART Adoption Readiness Tool Powered by ANCILE Solutions™'. Below the header, it says 'Please enter your information.' There are two text input fields: 'Company Name:' and 'Product Key:', both marked with an asterisk (*) to indicate they are required. Below these fields is a checkbox labeled 'Anyone who uses this computer (all users)' which is checked. At the bottom, there is an 'InstallShield' label and three buttons: '< Back', 'Next >', and 'Cancel'. A note at the bottom left says '* Required Fields'.

Note: If you are using an Evaluation (temporary) key, the expiration date will display after entering the Company and Product Key information and clicking Next.

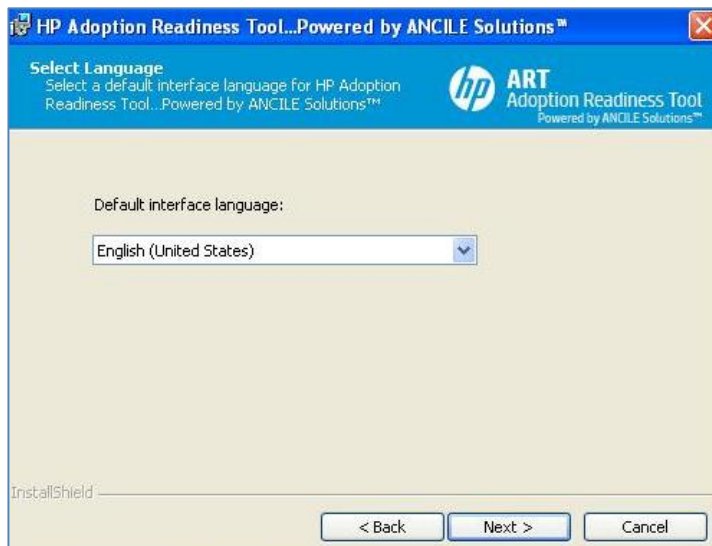
5. Click **Next** to begin the installation.

Optionally, select **Change** to specify a destination folder other than the default. Deselect the Create Desktop shortcut checkbox if you do not want the installation process to automatically create an HP ART Author Developer Kit shortcut.

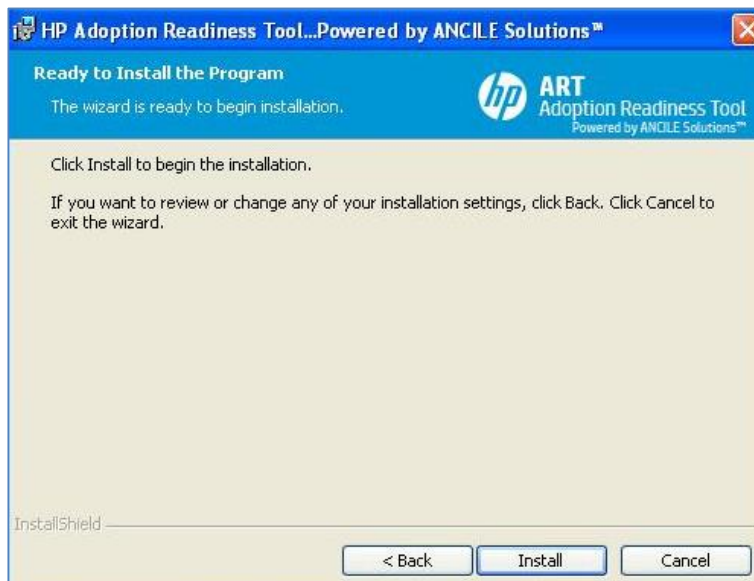


The screenshot shows the 'Destination Folder' dialog box of the HP Adoption Readiness Tool. The title bar reads 'HP Adoption Readiness Tool...Powered by ANCILE Solutions™'. The dialog has a blue header with the HP logo and 'ART Adoption Readiness Tool Powered by ANCILE Solutions™'. Below the header, it says 'Click Next to install to this folder, or click Change to install to a different folder.' There is a folder icon and text: 'Install HP Adoption Readiness Tool...Powered by ANCILE Solutions™ to: C:\Program Files\HP Adoption Readiness Tool\'. To the right of this text is a 'Change...' button. Below this is a section 'Create Desktop shortcut for:' with a checked checkbox labeled 'HP Adoption Readiness Tool...Powered by ANCILE Solutions™'. At the bottom, there is an 'InstallShield' label and three buttons: '< Back', 'Next >', and 'Cancel'.

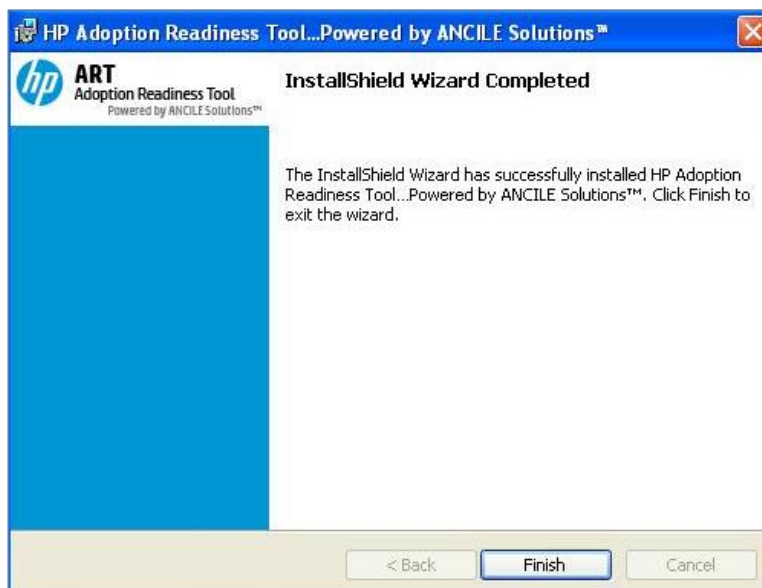
6. Select the **Default Language** from drop-down menu and click **Next**:



7. Click Install.



8. Click Finish to complete the installation.



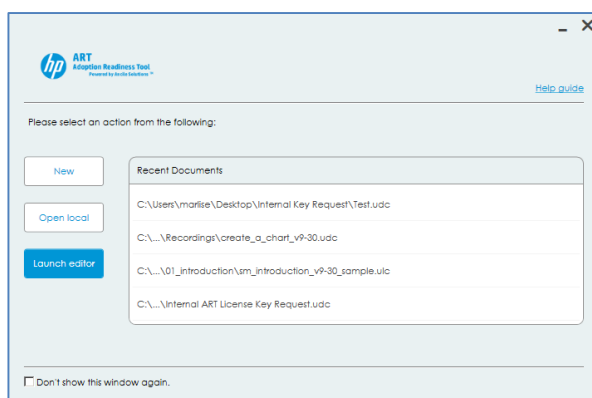
You are now ready to begin using HP ART 5.2. Please do not customize your HP ART Template without consulting your HP ART consultant.

Please contact your HPSW Sales Representative or hpssoftware.art@hp.com for further information on HP ART training and services.

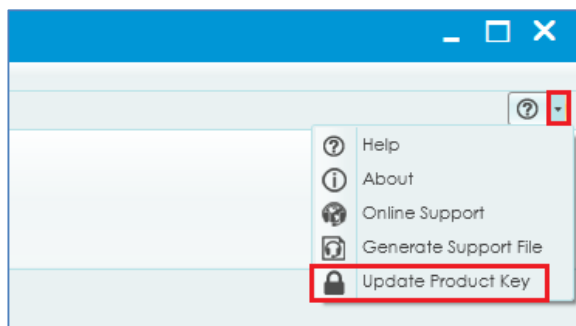
Update Product Key

Follow these steps if you only need to update a previously installed HP ART Product Key (for example, from a temporary key to a permanent key).

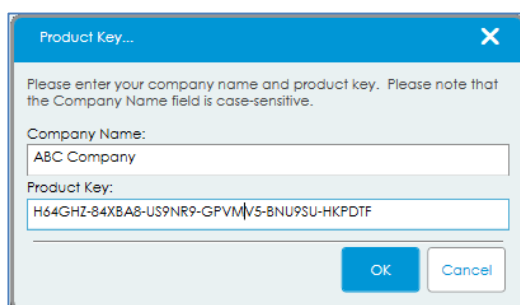
1. From the **HP ART Quick Start Menu**, select the **Launch editor** option.



2. From the **Help** drop-down menu, select the **Update Product Key** option.



3. Enter the **Company Name** and **Product Key** and click **OK**.



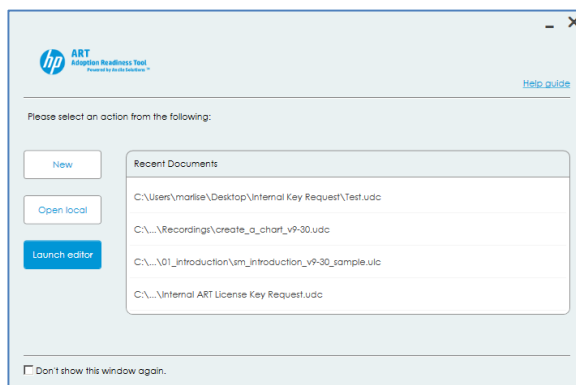
Note: If you are using an Evaluation (temporary) key, the expiration date will display after clicking OK.

The new key is installed.

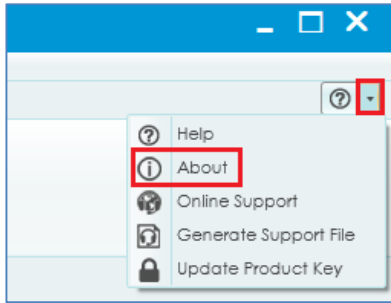
Verify Installed Key

Follow these steps if you need to verify the license key installed on a machine.

1. From the **HP ART Quick Start Menu**, select the **Launch editor** option.



2. From the **Help** drop-down menu, select the **About...** option.



3. The HP ART license product key information displays.

