

# HP Enterprise Maps

For Windows and Linux Operating Systems

Software Version: 2.00

## Release Notes

Document Release Date: December 2014

Software Release Date: December 2014



## Legal Notices

### Warranty

The only warranties for HP products and services are set forth in the express warranty statements accompanying such products and services. Nothing herein should be construed as constituting an additional warranty. HP shall not be liable for technical or editorial errors or omissions contained herein.

The information contained herein is subject to change without notice.

### Restricted Rights Legend

Confidential computer software. Valid license from HP required for possession, use or copying. Consistent with FAR 12.211 and 12.212, Commercial Computer Software, Computer Software Documentation, and Technical Data for Commercial Items are licensed to the U.S. Government under vendor's standard commercial license.

### Copyright Notice

© Copyright 2014 Hewlett-Packard Development Company, L.P.

### Trademark Notices

Adobe™ is a trademark of Adobe Systems Incorporated.

Intel® Xeon® and Intel® Core i7® are registered trademarks of Intel Corporation in the U.S. and other countries.

Microsoft®, Windows®, Windows® XP and Windows 7® are U.S. registered trademarks of Microsoft Corporation.

UNIX® is a registered trademark of TheOpenGroup.

Oracle and Java are registered trademarks of Oracle and/or its affiliates.

---

## Support

Visit the HP Software Support Online web site at:

**<http://www.hp.com/go/hpssoftwaresupport>**

This web site provides contact information and details about the products, services, and support that HP Software offers. HP Software online support provides customer self-solve capabilities. It provides a fast and efficient way to access interactive technical support tools needed to manage your business. As a valued support customer, you can benefit by using the support web site to:

- Search for knowledge documents of interest
- Submit and track support cases and enhancement requests
- Download software patches
- Manage support contracts
- Look up HP support contacts
- Review information about available services
- Enter into discussions with other software customers
- Research and register for software training

Most of the support areas require that you register as an HP Passport user and sign in. Many also require a support contract. To register for an HP Passport ID, go to:

**<http://h20229.www2.hp.com/passport-registration.html>**

To find more information about access levels, go to:

**[http://h20230.www2.hp.com/new\\_access\\_levels.jsp](http://h20230.www2.hp.com/new_access_levels.jsp)**

## Documentation Updates

The title page of this document contains the following identifying information:

- Software Version number, which indicates the software version.
- Document Release Date, which changes each time the document is updated.
- Software Release Date, which indicates the release date of this version of the software.
- To check for recent updates or to verify that you are using the most recent edition of a document, go to:

**<http://h20230.www2.hp.com/selfsolve/manuals>**

This site requires that you register for an HP Passport and sign in. To register for an HP Passport ID, go to:

**<http://h20229.www2.hp.com/passport-registration.html>**

Or click the **New users - please register** link on the HP Passport login page.

You will also receive updated or new editions if you subscribe to the appropriate product support service. Contact your HP sales representative for details.

## Contents

Legal Notices .....	2
Warranty .....	2
Restricted Rights Legend.....	2
Copyright Notice.....	2
Trademark Notices .....	2
Support.....	3
Documentation Updates.....	4
Contents.....	5
HP Enterprise Maps Release Notes .....	6
Support Matrix.....	7
New Features in this Release .....	8
Installation .....	12
Installation Notes.....	12
Open Defects .....	13
Enterprise Maps Known Issues .....	13
HP Enterprise Maps Workbench Known Issues .....	14
HP Enterprise Maps Extension for Sparx Known Issues .....	15
HP Enterprise Maps Extension for Inkscape Known Issues.....	15

## HP Enterprise Maps Release Notes

For Windows® and Linux operating system.

Software version: 2.00

Publication date: December 2014

This document is an overview of the changes made to HP Enterprise Maps. It contains important information that is not included in books or Help. You can find information about the following in this document:

- "New Features in this Release" on page 8
- "Installation " on page 12
- "Open Defects" on page 13

HP Enterprise Maps 2.00 includes a complete installer of HP Enterprise Maps, the HP Enterprise Maps Workbench, the extensions for Sparx and Inkscape, and the documentation and license files.

**Important Note:** To download the latest updated documentation set for HP Enterprise Maps, go to the following URL:

<http://support.openview.hp.com/selfsolve/manuals>

Documentation resources for HP Enterprise Maps include the following components:

- Release Notes (PDF)
- Installation Guide (PDF)
- Online Help
- User Guide (PDF)
- Administration Guide (PDF)
- Developer Guide (PDF)
- Support Matrix (PDF)
- Concepts Guide (PDF)
- Legal Guide (PDF)
- Assertion Editor Guide (PDF)
- Customization Editor Guide (PDF)
- Report Editor Guide (PDF)
- Taxonomy Editor Guide (PDF)
- Virtual Appliance Guide (PDF)

**Important Note:** To download the latest updated documentation set for HP Enterprise Maps, go to the following URL and select the HP Enterprise Maps 2.00 release:

<http://support.openview.hp.com/selfsolve/manuals>

## **Support Matrix**

For information about the installation requirements and compatibility with other products, see the HP Enterprise Maps Support Matrix. The support matrix may be updated between releases, and so is only available at the HP Support web site:

<http://support.openview.hp.com/selfsolve/manuals>

The support matrix includes the following information:

- Requirements
  - Hardware
  - Operating System
  - Databases
  - Application Servers
  - Web Servers
  - Web Browsers and Plug-ins
  
- Compatibility
  - Languages
  - Internationalization Variances
  - Virtualization Products
  - High-Availability Products
  - HP Software Integrations
  - HP Software Coexistence
  - Other Software Coexistence
  - Server / Client Compatibility
  - Performance and Sizing

Obsolescence Plans

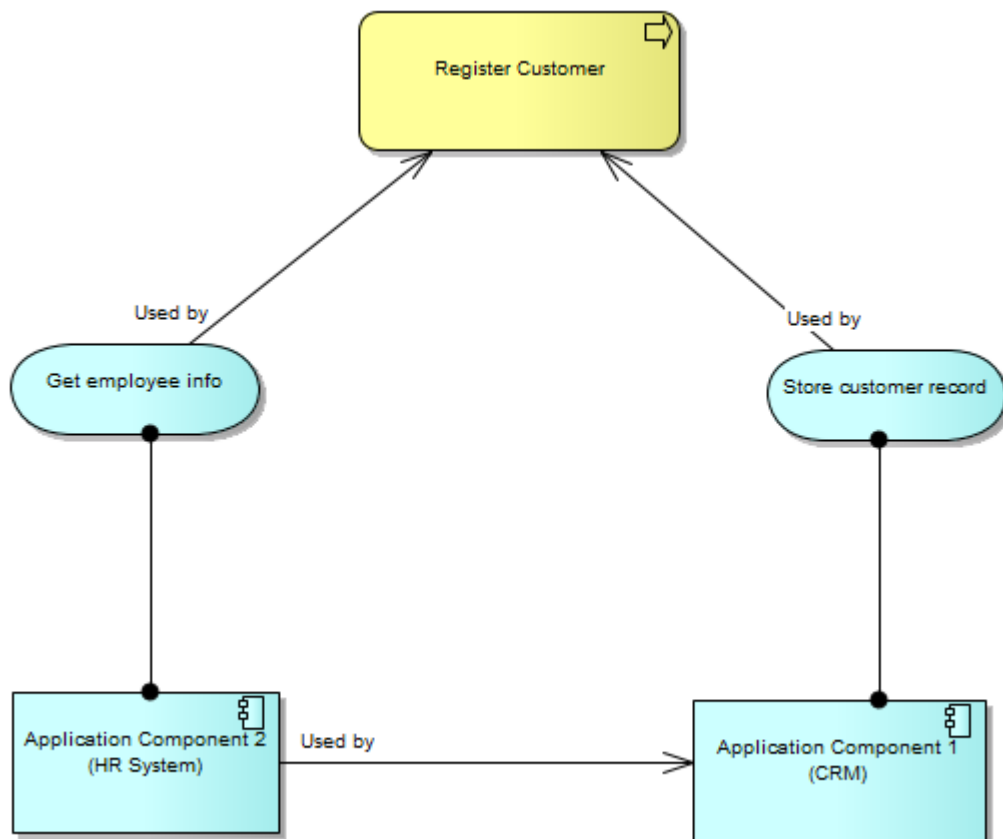
## New Features in this Release

HP Enterprise Maps 2.00 provides both functional features as well as system improvements.

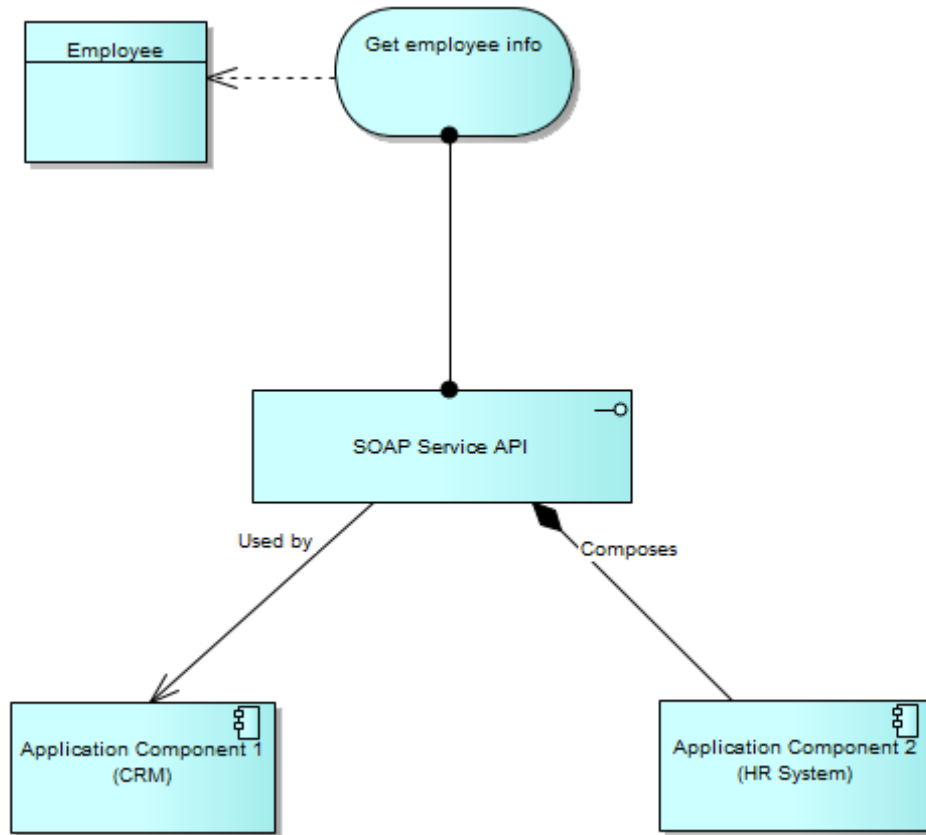
*Functional features are for administrators and common users. Key functional features for common users include:*

- **Shortcut resolution UI**

Shortcut solution allows you to store the data cleaned to comply with the canonical model, import information about such shortcuts and find the missing intermediaries either manually or automatically with the help of a user interface.







• **Architecture Management**

Architecture management is designed to offer cohesive business solution to stakeholders for their business needs. It integrates the business strategies architecture and projects by covering and managing the requirements, successfully negating the effects of a weak project planning present in other models.

FinPlanner		no votes
Proposal		★★★★★
<b>Overview</b>		<b>Add to Favorites</b>
Requirements	<p>FinPlanner improve efficiency of selling process. The solution will analyze actual portfolio of services used by client, evaluate client profile and provide optimal combination of products. The objective is to improve up-sell and x-sell process, capture and improve information about client and improve customer satisfaction.</p> <p>Key capabilities of FinPlanner:</p> <ul style="list-style-type: none"> <li>• Help internal sales and partners to provide optimal set of products, improve and simplify the selling process</li> <li>• Capture key soft-information about client and behavior to improve services</li> <li>• Simulate various scenarios and analyze visually potential impacts of the analyze options</li> <li>• Based on information provide recommendation about suitable products</li> <li>• Build reports regarding the actual usage of the products, trends and consolidated customer information</li> </ul>	<b>My Tasks</b> No tasks defined.
Changes to be Delivered		<b>Last Edit</b> Administrator
Prerequisites		<b>Keywords</b> None set <a href="#">Edit</a>
Details		<b>Contacts</b>
Documentation	<b>Planning</b> Associated Plateaus: <a href="#">FinPlanner</a> Architecture Diagrams: <a href="#">FinPlanner Conceptual Model</a> , <a href="#">FinPlanner Requirements</a>	Architect Mary River Project Manager Joseph Banks Business Owner Doris Wagner Bev Bailey
Tree View	<b>Requirement Analysis</b> Composed of (Requirements): <a href="#">Link new</a> , <a href="#">Link existing...</a> Aggregated by (Requirements): <a href="#">Link new</a> , <a href="#">Link existing...</a> Requirement Diagrams: <a href="#">More on requirements...</a>	
<a href="#">Show More...</a>		

- **Better PPM integration, aligned with TOGAF**

EM manages enterprise architecture changes for a proposal in PPM (proposal is an entity type in PPM).

This integration effectively provides a transparent control over architecture solution that is required in order to accept the proposal, estimate its costs and estimate the time required to realize the change.

The screenshot shows the HP Enterprise Maps Administration interface. The top navigation bar includes 'hp Enterprise Maps', 'Catalog', 'Reports', 'Navigator', and 'Administration'. Below this is a secondary navigation bar with 'User Management', 'Configuration', 'Governance', and 'Customization'. The main content area is titled 'Integrations Configuration' and features a sidebar with 'Integration Connectors' and 'Mappings'. The main content area is divided into three sections: 'BSM/UCMDB Repositories', 'Sparx EA Repositories', and 'PPM Repositories'. Each section contains a list of existing repositories and an 'Add Server' button. A note at the top of the main content area states: 'To connect HP Enterprise Maps to external systems you need to limit scope of the integration to a particular domain you need to be in the context of a domain.'

**Integrations**  
*Configuration*

**Integration Connectors**

**Mappings**

To connect HP Enterprise Maps to external systems you need to limit scope of the integration to a particular domain you need to be in the context of a domain.

### BSM/UCMDB Repositories

- Cloud uCMDB 9.03 Production
- Add Server

### Sparx EA Repositories

- Default Sparx EA
- Add Server

### PPM Repositories

- Cloud PPM
- Add Server

- **Better Relationship Editor**

Relationships are grouped together by the "label" attribute which is used to generate the relationship editor label. Relationships are rendered in descending order of relationship priority.

User can define a list of properties that will be rendered as read-only in catalog, which means that editors do not appear on edit and create pages.

- **Better support in SparX extension**

This could possibly make the EM-Sparx integration better from both the target user perspective and our development practice.

- Provides a practice in which Sparx can be used to model architecture changes on top of Archimate 2 without a need to manually compose plateau and deliverables.
- Allows one Sparx project to carry multiple plateaus and deliverables.
- Allows to attach financial data to the modeled changes of the architecture

- **More reports are provided**

Compliance reports regarding to artifacts layers: Business Architecture data quality report, Application Architecture data quality, Technology Architecture data quality, Planning consistency, ArchiMate compliance, Data Objects and Application Services matrix report, Capabilities reports, Rating report and so on.

---

## Installation

### Installation Notes

The distribution is a complete installer and the file is called hp-em-2.00.jar. For installation instructions, refer to *the HP Installation and Configuration Guide*. The additional extensions and tools are found in the following files:

- HP Enterprise Maps Extension for Sparx EA, that enables direct integration with the Sparx EA modeling tool, is hp-em-sparx-2.00.msi.
- HP Enterprise Maps customization tool is hp-em-workbench-2.00-win64.zip.
- HP Enterprise Maps extension for Inkscape, that enables creation and update of Model Views in EM dashboard, is hp-em-inkscape-2.00.msi.

Please review all instructions and the Hewlett-Packard Support Line User Guide or your Hewlett-Packard support terms and conditions for precautions, scope of license, restrictions, and, limitation of liability and warranties, before installing.

## Open Defects

The reference number for each defect is the change request (QCCR) number. For more information about open defects, visit [HP Software Support Online](#), or contact your HP Support representative directly.

### Enterprise Maps Known Issues

**Title:** QCCR1J54635 Lifecycle notifications not customizable and configured to send more emails than expected

**Description:** In the product, the default lifecycle notification configuration is hard-coded and not easily customizable. The list of recipients is not hard-coded in the spring configuration file called lifecyclePushNotificationContext.xml. By default, emails are sent not only to artifact owners, but also to Providers. In some cases this configuration may not be acceptable.

**Workaround:** You can change the settings in the lifecyclePushNotificationContext.xml file. It works although it can be rewritten by upcoming updates. Another workaround is to modify LDAP integration configuration to disable fetching the email of user. User can change the e-mail address and full name within UI. New users will be warned to setup an e-mail address or full name with the first login to Web UI.

---

**Title:** QCCR1J54589 Lifecycle processes defining manual tasks can compromise performance of some parts of GUI.

**Description:** Governance processes having manual tasks may degrade performance of the homepage as well as newly created artifacts governed by that process. Only the customers that use lifecycle processes with manual tasks will have difficulties from this bug.

**Workaround:** You can partially reduce the impact if you temporarily disable the pending tasks box in Customization on the welcome page.

---

**Title:** QCCR1J32151 WSDL/Schema browser

**Description:** Larger XSD schemas may cause browser instabilities, or degraded performance of HTTP browser. WSDL 2.0 is not viewable.

---

**Title:** QCCR1J60310 Loading Categories takes a while on MS SQL

**Description:** When using EM, page loading may take a long time. The main reason could come from the MS SQL database. This issue does not happen in Oracle 11gR1.

**Workaround:** You can use tools provided by the MS SQL Server to detect the query and setup of the MS SQL Server to increase the progress time of this query and solve this problem.

- Use SQL Server Profiler to capture time-consuming queries.
  - Use Database Engine Tuning Advisor to fine-tune the database.
- 

**Title:** QCCR1J60495 JBoss Cluster: Scheduled Tasks keep throwing errors in the log which overwhelms the machine HDD

**Description:** The issue with overwhelmed HDD could be caused by this defect in JBoss: <https://community.jboss.org/thread/2451>

**Workaround:** Add the tags in red text to JBOSS\_HOME/server/<node\_name>/conf/bootstrap/vfs.xml

```
<property name="permanentRoots">  
<map keyClass="java.net.URL" valueClass="org.jboss.virtual.spi.ExceptionHandler">  
<entry>
```

---

```
<key>${jboss.lib.url}</key>
<value><null/></value>
</entry>
<entry>
<key>${jboss.common.lib.url}</key>
<value><inject bean="VfsNamesExceptionHandler"/></value>
</entry>
<entry>
<key>${jboss.server.lib.url}</key>
<value><inject bean="VfsNamesExceptionHandler"/></value>
</entry>
<entry>
<key>${jboss.server.home.url}deploy</key>
<value><inject bean="VfsNamesExceptionHandler"/></value>
</entry>
</map>
</property>
```

---

**Title:** QCCR1J76422 ALM Structure map does not display the artifacts correctly.

**Description:** After importing repository package, the relationships may not be created completely and you might need to wait for about 30 minutes to see the complete result.

**Workaround:** If you wish to see the results immediately scan the full database index by clicking Administrator tab > Configuration > Database Indexing and then clicking Rescan.

---

**Title:** QCCR1J75696 In the proposal view page, implementing projects shortcut must be calculated only by default.

**Description:** Once the demo data is imported, there is no information about Implemented Projects in overview page of demo Proposal artifacts.

**Workaround:** After importing demo data, you must run shortcut calculation. To do so, click Administrator tab > Configurations > Tasks, then run task "Shortcuts Consolidating Task" to see the implementing projects of proposal.

## HP Enterprise Maps Workbench Known Issues

**Title:** QCCR1J44130 It is not recommended to work with more than three extension projects at the same time as this consumes a lot of system resources and slows down the application.

---

**Title:** QCCR1J68477 Cannot preview report when using workbench on Windows OS with Internet Explorer version 11.

**Workaround:** Right click on Preview tab or Parameter dialog > Properties > Copy "Address (URL) > Open this URL on external browser.

## **HP Enterprise Maps Extension for Sparx Known Issues**

**Title:** QCCR1J63600 SPARX IDE v10 crashes during creation of a connector.

**Workaround:** After installation of Extension, disable option "Strict UML Syntax".

---

**Title:** QCCR1J76249 mapping configuration is catched.

**Workaround:** After changing the mapping file, remember to re-open Sparx project so that the mapping is reflected.

## **HP Enterprise Maps Extension for Inkscape Known Issues**

**Title:** QCCR1J66463 Password is shown with full characters.