

HP Enterprise Maps

For Windows and Linux Operating Systems

Software Version: 2.00

Virtual Appliance Quick Start Guide

Document Release Date: December 2014

Software Release Date: December 2014



Legal Notices

Warranty

The only warranties for HP products and services are set forth in the express warranty statements accompanying such products and services. Nothing herein should be construed as constituting an additional warranty. HP shall not be liable for technical or editorial errors or omissions contained herein.

The information contained herein is subject to change without notice.

Restricted Rights Legend

Confidential computer software. Valid license from HP required for possession, use or copying. Consistent with FAR 12.211 and 12.212, Commercial Computer Software, Computer Software Documentation, and Technical Data for Commercial Items are licensed to the U.S. Government under vendor's standard commercial license.

Copyright Notice

© Copyright 2014 Hewlett-Packard Development Company, L.P.

Trademark Notices

Adobe™ is a trademark of Adobe Systems Incorporated.

Intel® Xeon® and Intel® Core i7® are registered trademarks of Intel Corporation in the U.S. and other countries.

Microsoft®, Windows®, Windows® XP and Windows 7® are U.S. registered trademarks of Microsoft Corporation.

UNIX® is a registered trademark of TheOpenGroup.

Oracle and Java are registered trademarks of Oracle and/or its affiliates.

Documentation Updates

The title page of this document contains the following identifying information:

- Software Version number, which indicates the software version.
- Document Release Date, which changes each time the document is updated.
- Software Release Date, which indicates the release date of this version of the software.

To check for recent updates or to verify that you are using the most recent edition of a document, go to: <http://h20230.www2.hp.com/selfsolve/manuals>

This site requires that you register for an HP Passport and sign in. To register for an HP Passport ID, go to: <http://h20229.www2.hp.com/passport-registration.html>

Or click the **New users - please register** link on the HP Passport login page.

You will also receive updated or new editions if you subscribe to the appropriate product support service. Contact your HP sales representative for details.

Support

Visit the HP Software Support Online web site at: <http://www.hp.com/go/hpsoftwaresupport>

This web site provides contact information and details about the products, services, and support that HP Software offers.

HP Software online support provides customer self-solve capabilities. It provides a fast and efficient way to access interactive technical support tools needed to manage your business. As a valued support customer, you can benefit by using the support web site to:

- Search for knowledge documents of interest
- Submit and track support cases and enhancement requests
- Download software patches
- Manage support contracts
- Look up HP support contacts
- Review information about available services
- Enter into discussions with other software customers
- Research and register for software training

Most of the support areas require that you register as an HP Passport user and sign in. Many also require a support contract. To register for an HP Passport ID, go to:

<http://h20229.www2.hp.com/passport-registration.html>

To find more information about access levels, go to:

http://h20230.www2.hp.com/new_access_levels.jsp

HP Software Solutions Now accesses the HPSW Solution and Integration Portal Web site. This site enables you to explore HP Product Solutions to meet your business needs, includes a full list of Integrations between HP Products, as well as a listing of ITIL Processes. The URL for this Web site is <http://h20230.www2.hp.com/sc/solutions/index.jsp>

About this PDF Version of Online Help

This document is a PDF version of the online help. This PDF file is provided so you can easily print multiple topics from the help information or read the online help in PDF format. Because this content was originally created to be viewed as online help in a web browser, some topics may not be formatted properly. Some interactive topics may not be present in this PDF version. Those topics can be successfully printed from within the online help.

Contents

Contents	3
Chapter 1: About This Guide	4
Chapter 2: HP EM Virtual Appliance Overview	5
Chapter 3: Hardware and Software Prerequisites	6
Chapter 4: Steps to Set Up and Use the Virtual Appliance	7
1. Download the Virtual Appliance File	7
2. Deploy the Virtual Appliance Using the Oracle VirtualBox	7
3. Open the HP EM Welcome Page	8
4. Log In to HP EM	9
5. Power-Off the Virtual Appliance	9
Chapter 5: Re-import and Clear Demo Data in HP EM	11
Re-import Demo Data to HP EM	11
Clear the Data in HP EM	12
Chapter 6: Install the Extension for Sparx Systems Enterprise Architect Plugin	13
Chapter 7: Enable Hardware Virtualization	14

Chapter 1: About This Guide

Welcome to the *HP Enterprise Maps - Virtual Appliance Quick Start Guide*. This guide explains how to use the Virtual Appliance to use the trial version of HP Enterprise Maps (HP EM).

This guide contains the following chapters:

- ["HP EM Virtual Appliance Overview" on page 5](#)
- ["Hardware and Software Prerequisites" on page 6](#)
- ["Steps to Set Up and Use the Virtual Appliance" on page 7](#)
- ["Re-import and Clear Demo Data in HP EM " on page 11](#)
- ["Install the Extension for Sparx Systems Enterprise Architect Plugin" on page 13](#)
- ["Enable Hardware Virtualization" on page 14](#)

Chapter 2: HP EM Virtual Appliance Overview

Trial Version

The HP EM Virtual Appliance is a trial version of the product you may use for evaluation purposes. The trial version contains a 60 days instant-on license.

Log in to the Virtual Appliance

The Virtual Appliance can be accessed through HTTP/S, a console, or SSH.

To SSH to the machine, use these credentials:

- User name: **vagrant**
- Password: **vagrant** .

Warranty

The HP EM Virtual Appliance is provided as-is with no warranty.

Prior to using the Virtual Appliance you must agree with the terms and conditions of using Oracle XE and JDK7.

Chapter 3: Hardware and Software Prerequisites

The following hardware and software is required to run the Virtual Appliance:

- 64-bit Operating System (Windows/Mac/Linux/Solaris)
- Intel CPU with hardware virtualization support (VT-x/AMD-V) enabled
- At least 8GB RAM
- At least 20GB free hard disk space

Chapter 4: Steps to Set Up and Use the Virtual Appliance

To set up and use the Virtual Appliance to use the Trial version of HP EM, follow these 5 procedures:

- "1. Download the Virtual Appliance File" below
- "2. Deploy the Virtual Appliance Using the Oracle VirtualBox" below
- "3. Open the HP EM Welcome Page" on the next page
- "4. Log In to HP EM" on page 9
- "5. Power-Off the Virtual Appliance" on page 9

1. Download the Virtual Appliance File

Step 1. Open www.hp.com/go/em, click Free Trial, fill in the Evaluation form, click Continue and Agree to the Software Download Terms of Use.

Step 2. Select Using Standard Download and download the Virtual Appliance file.

Name	File Size	Download
HP Enterprise Maps 1.00 Eng Software Media	1334 MB	Download
HP Enterprise Maps 1.00 Eng Virtual Appliance (hp-em-1.00.ova)	2649 MB	Download
HP Enterprise Maps 1.00 Welcome Letter	80 KB	Download
Virtual Appliance Letter	40 KB	Download

The size of the Virtual Appliance file is over 2.6GB. Allocate several hours to download it.

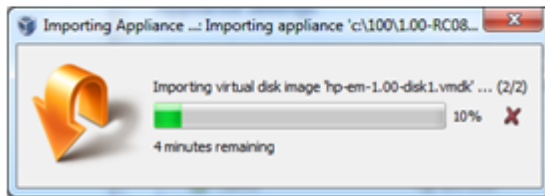
2. Deploy the Virtual Appliance Using the Oracle VirtualBox

Open <http://www.virtualbox.org> to download and install Oracle VirtualBox (v4.3.x)

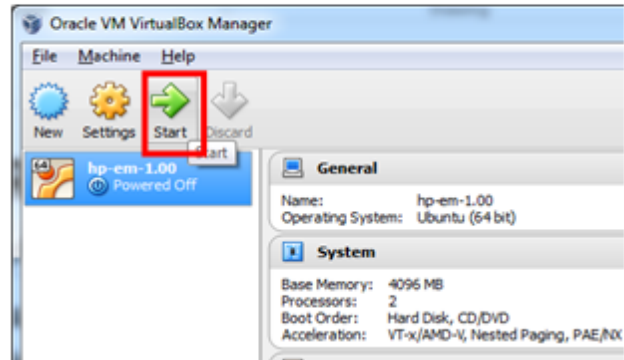
Step 3. Start the VirtualBox: **Select File > Import Appliance** and then select the downloaded hp-em-2.00.ova file.

Step 4. Start the Virtual Appliance: Click **Start**.

Step 3



Step 4

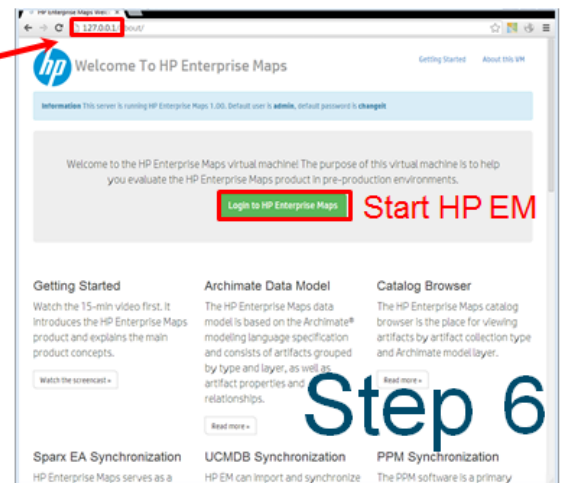
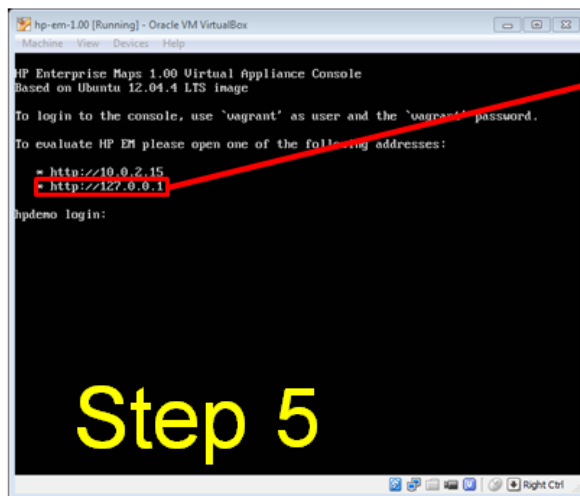


HP EM also supports VMware virtualization software.

3. Open the HP EM Welcome Page

Step 5. Locate the HP EM Addresses in your console.

Step 6. Use one of the addresses in your web browser and click the green Login button to open the HP EM login page.



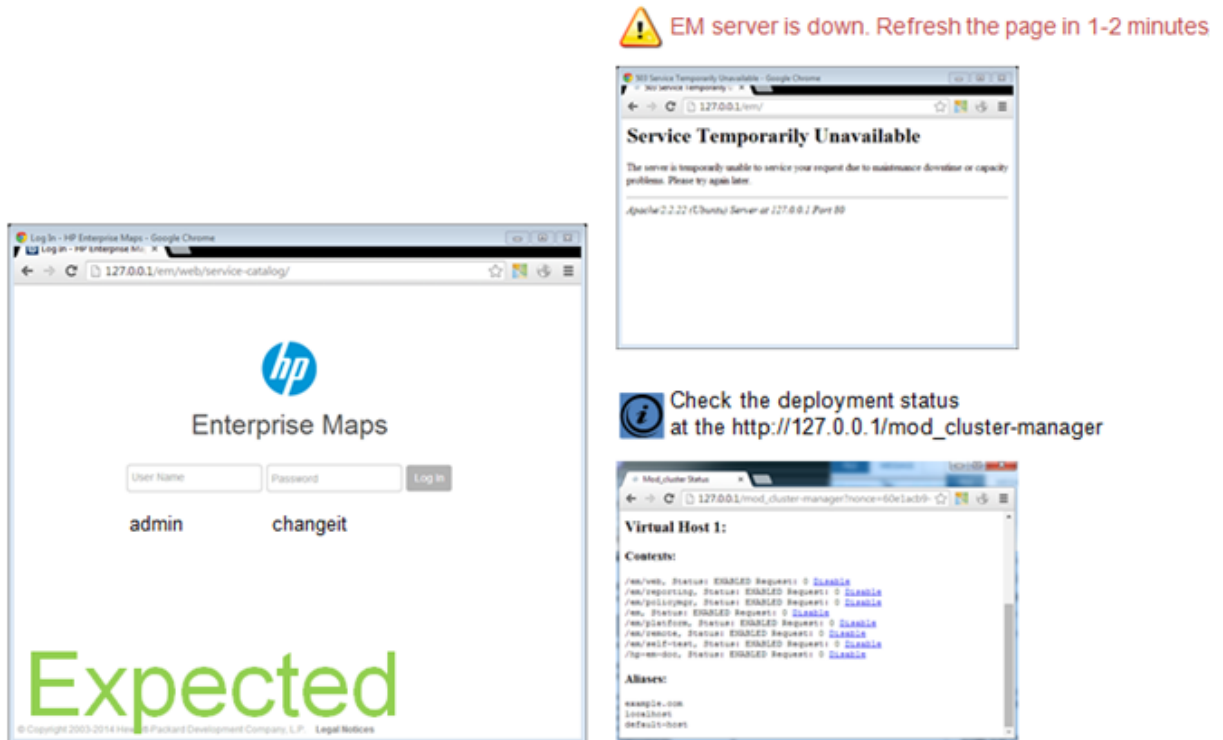
The trial version contains a 60 days instant-on license. To renew the license, use the HP Licensing Portal <http://www.hp.com/software/licensing>.

If the Welcome page is not displayed, try to open other listed address from the console.

If HP EM login page does not show after clicking the login button, click the button again in 2 minutes (HP EM is still starting).

4. Log In to HP EM

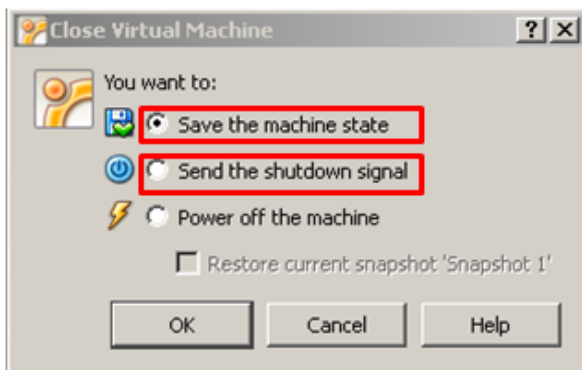
Step 7: Login using **admin** as the User Name and **changeit** as the Password.



5. Power-Off the Virtual Appliance

To Close the Virtual Appliance, select one of the following options:

- **Save the machine state** - Similar to hibernate on a real computer. The Virtual Appliance will start quickly but requires additional disk space.
- **Send the shutdown signal** – Full Virtual Appliance shutdown. Same effect as if you had pressed the power button on a real computer



Both options will save all the data stored in the HP EM software.

Chapter 5: Re-import and Clear Demo Data in HP EM

This chapter describes how to re-import the demo data in HP EM and how to clear the data as follows:

"Re-import Demo Data to HP EM" below

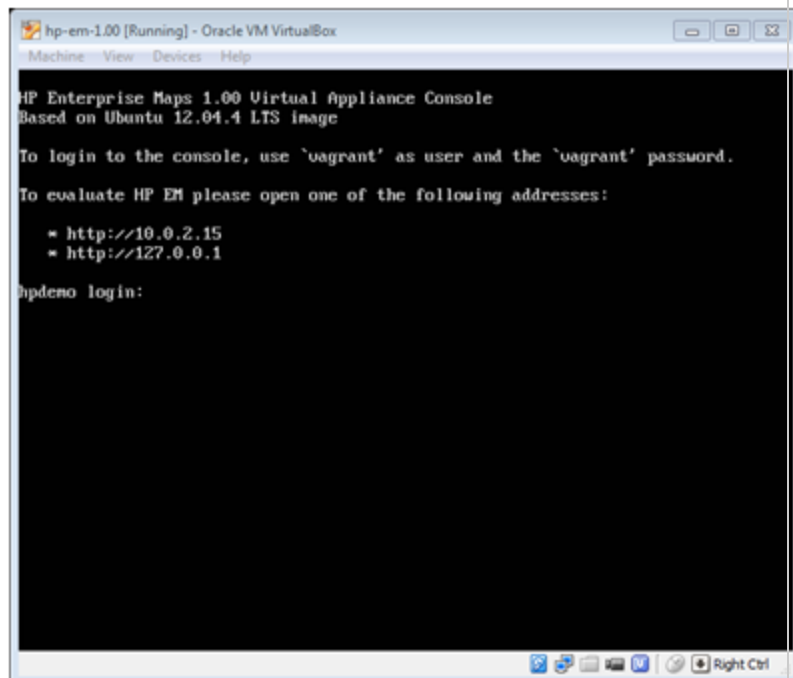
"Clear the Data in HP EM" on the next page

Re-import Demo Data to HP EM

Login to the console:

login: **vagrant**

password: **vagrant**

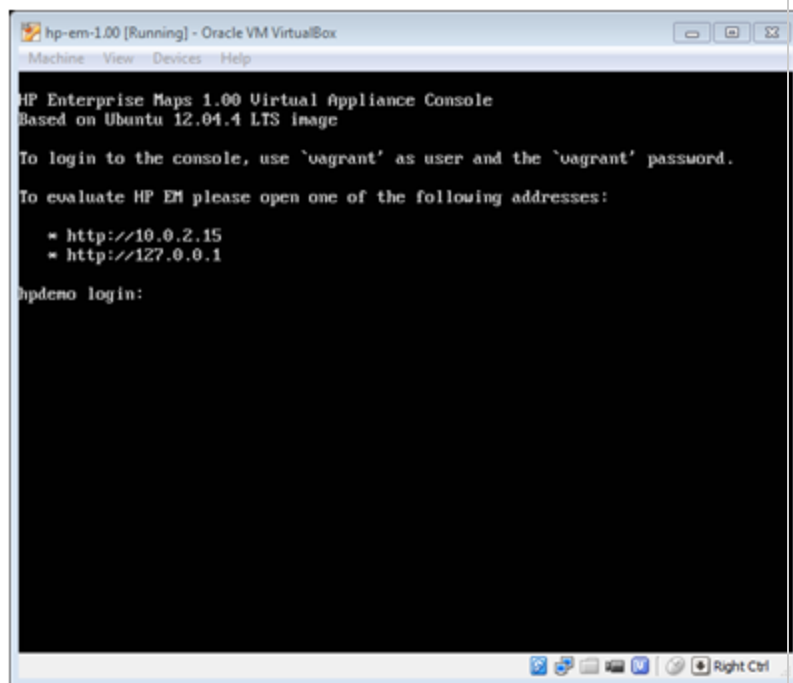


Type the following 6 commands

```
sudo su -  
cd /usr/share/hp-em/ && . ./env  
service hp-em stop  
cd /usr/share/hp-em/install  
./bin/import.sh --quiet --reset --image ../repository-image.zip  
service hp-em start
```

Clear the Data in HP EM

Login to the console:
login: **vagrant**
password: **vagrant**



Type the following 6 commands:

```
sudo su -  
cd /usr/share/hp-em/ && . ./env  
service hp-em stop  
cd /usr/share/hp-em/install  
./bin/reset.sh --quiet  
service hp-em start
```

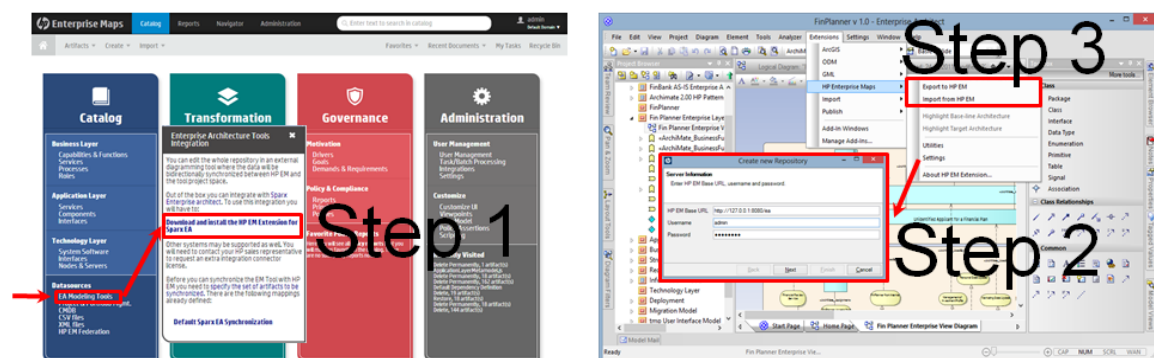
Chapter 6: Install the Extension for Sparx Systems Enterprise Architect Plugin

Step 1. Login to HP EM, download the HP EM Extension for Sparx Systems Enterprise Architect (EA) plugin and install the hp-em-sparx-2.00.msi file.

Step 2. Open the project in Extension for Sparx Systems EA, and configure the HP EM repository.

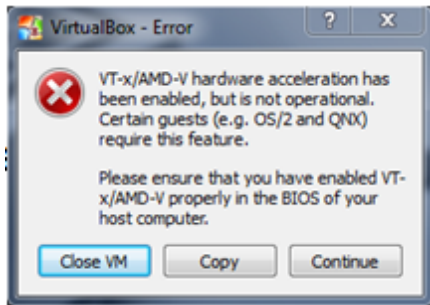
Step 3. Export and import data with HP EM.

Caution: The HP EM synchronization will change the EAP file irreversibly. Use a separate EAP copy for testing purposes.



Chapter 7: Enable Hardware Virtualization

If you see the following dialog, follow the example steps below to enable hardware virtualization in BIOS on your computer:



Step 1. Reboot your computer and press **F10 Bios Setup** during bootup.

Step 2. Select **Device Configurations**.

Step 3. Be sure the **Virtualization Technology** option is checked.

