

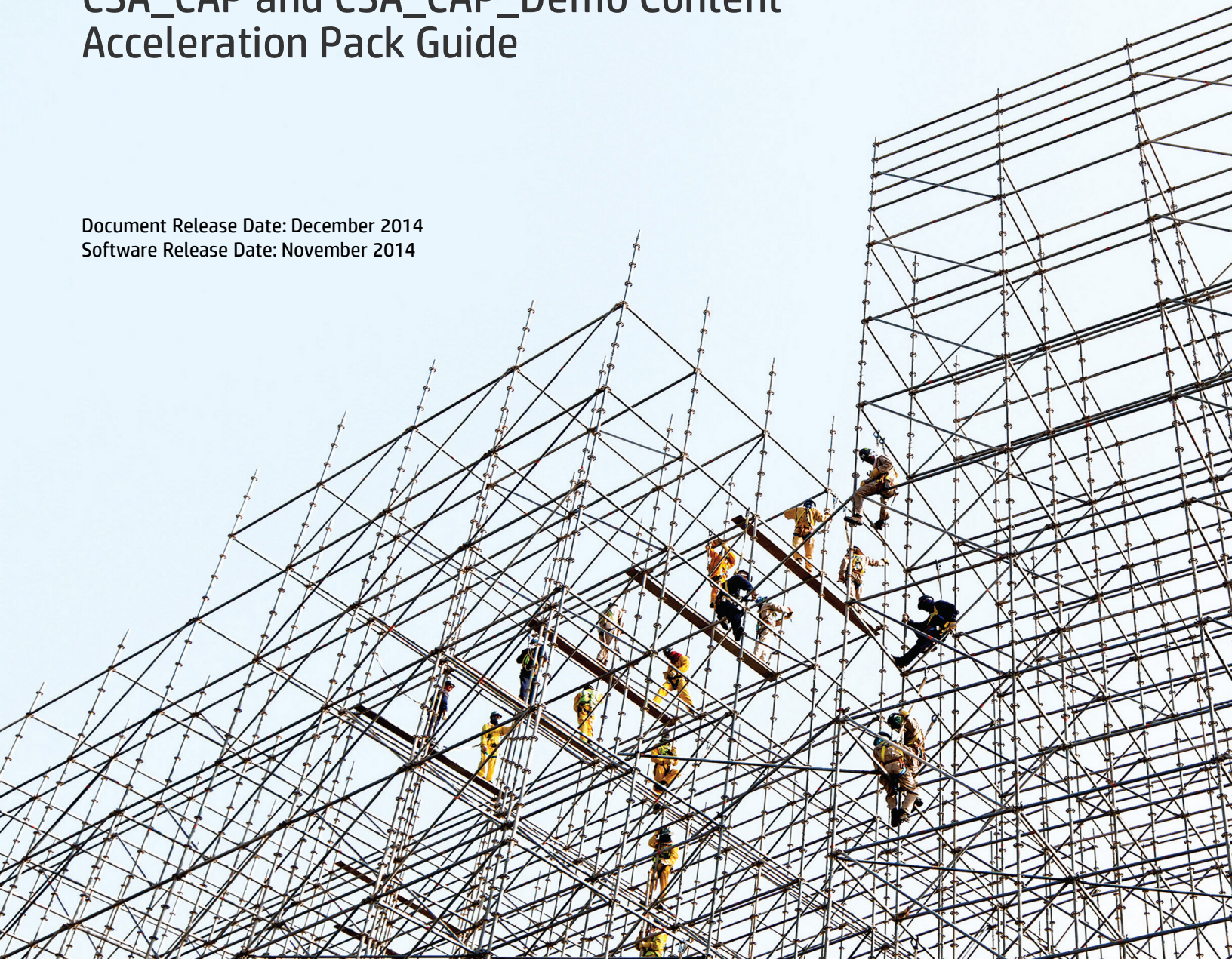


# HP IT Executive Scorecard

Software Version: 9.50  
Windows® operating system

## CSA\_CAP and CSA\_CAP\_Demo Content Acceleration Pack Guide

Document Release Date: December 2014  
Software Release Date: November 2014



## Legal Notices

### Warranty

The only warranties for HP products and services are set forth in the express warranty statements accompanying such products and services. Nothing herein should be construed as constituting an additional warranty. HP shall not be liable for technical or editorial errors or omissions contained herein.

The information contained herein is subject to change without notice.

### Restricted Rights Legend

Confidential computer software. Valid license from HP required for possession, use or copying. Consistent with FAR 12.211 and 12.212, Commercial Computer Software, Computer Software Documentation, and Technical Data for Commercial Items are licensed to the U.S. Government under vendor's standard commercial license.

### Copyright Notice

© Copyright 2013-2014 Hewlett-Packard Development Company, L.P.

### Trademark Notices

Microsoft® and Windows® are U.S. registered trademarks of Microsoft Corporation.

AMD is a trademark of Advanced Micro Devices, Inc.

Intel and Xeon are trademarks of Intel Corporation in the U.S. and other countries.

Oracle and Java are registered trademarks of Oracle and/or its affiliates.

## Documentation Updates

The title page of this document contains the following identifying information:

- Software Version number, which indicates the software version.
- Document Release Date, which changes each time the document is updated.
- Software Release Date, which indicates the release date of this version of the software.

To check for recent updates or to verify that you are using the most recent edition of a document, go to: <http://h20230.www2.hp.com/selfsolve/manuals>

This site requires that you register for an HP Passport and sign in. To register for an HP Passport ID, go to: <http://h20229.www2.hp.com/passport-registration.html>

Or click the **New users - please register** link on the HP Passport login page.

You will also receive updated or new editions if you subscribe to the appropriate product support service. Contact your HP sales representative for details.

## Support

Visit the HP Software Support Online web site at: <https://softwaresupport.hp.com/>

This web site provides contact information and details about the products, services, and support that HP Software offers.

HP Software online support provides customer self-solve capabilities. It provides a fast and efficient way to access interactive technical support tools needed to manage your business. As a valued support customer, you can benefit by using the support web site to:

- Search for knowledge documents of interest
- Submit and track support cases and enhancement requests
- Download software patches
- Manage support contracts
- Look up HP support contacts
- Review information about available services
- Enter into discussions with other software customers
- Research and register for software training

Most of the support areas require that you register as an HP Passport user and sign in. Many also require a support contract. To register for an HP Passport ID, go to:

<https://hpp12.passport.hp.com/hppcf/help.do>

To find more information about access levels, go to:

[http://support.openview.hp.com/access\\_level.jsp](http://support.openview.hp.com/access_level.jsp)

**HP Software Solutions Now** accesses the HPSW Solution and Integration Portal Web site. This site enables you to explore HP Product Solutions to meet your business needs, includes a full list of Integrations between HP Products, as well as a listing of ITIL Processes. The URL for this Web site is

<http://h20230.www2.hp.com/sc/solutions/index.jsp>

## About this PDF Version of Online Help

This document is a PDF version of the online help. This PDF file is provided so you can easily print multiple topics from the help information or read the online help in PDF format. Because this content was originally created to be viewed as online help in a web browser, some topics may not be formatted properly. Some interactive topics may not be present in this PDF version. Those topics can be successfully printed from within the online help.

## Contents

CSA_CAP and CSA_CAP_Demo Content Acceleration Packs .....	5
Upload and manage the Content Acceleration Pack .....	11
View the CAP-related Dashboard pages .....	11
Activate the CSA_CAP_Demo in XS .....	11
Deactivate the CSA_CAP_DEMO and activate the CSA_CAP .....	12
CSA_CloudOptimization and CSA_CloudOptimization_Demo Contexts .....	14
CSA_CloudOptimization_Demo .....	15
CSA_CloudOptimization .....	23
% of Server Utilization KPI .....	31
 Send Documentation Feedback .....	 32

# CSA\_CAP and CSA\_CAP\_Demo Content Acceleration Packs

The purpose of the CSA\_CAP\_Demo Content Acceleration Pack (CAP) is to be used in Proof-of-Concept (POC) sessions.

The CSA\_CAP\_Demo CAP provides a set of items (Dashboard pages, Scorecards, Contexts, KPIs, Metrics, and more) and mock data (located in a .CSV file) to build key performance indicators (KPIs) related to CSA-related issues. The CAP includes the Cloud Server Automation Perspectives. The CAP provides broad and deep insight that should enable you to Increase Service Profitability, Optimize Resource Provider Relationship, Improve Resource Utilization. This CAP provides a 360 degree CSA view.

The purpose of the CSA\_CAP CAP is to accelerate your out-of-the-box integration with HP Cloud Service Automation.

The CSA\_CAP CAP provides a set of items (Dashboard pages, Scorecards, Contexts, KPIs, Metrics, and more) that automatically gathers information from across your enterprise to build key performance indicators (KPIs) related to CSA-related issues with real data obtained by running ETL. The CAP includes the Cloud Server Automation Perspectives. The CAP provides broad and deep insight that should enable you to Increase Service Profitability, Optimize Resource Provider Relationship, Improve Resource Utilization. This CAP provides a 360 degree CSA view.

[Learn More](#)

[Tasks](#)

## Learn More

### What are Content Packs (CAPs)

Content Acceleration Packs (CAPs) are ready-to-import packages that include Dashboard pages that display Scorecards and components, KPIs, Metrics, Contexts (universes), data (from .CSV files or from data sources), and documentation for the CAP.

CAPs describe typical stories that show how the correct implementation of Executive Scorecard drives Performance Improvement and Cost Reduction for the IT organization.

CAPs demonstrate Executive Scorecard capabilities, and helps you add basic elements that can be used to customize your Dashboard.

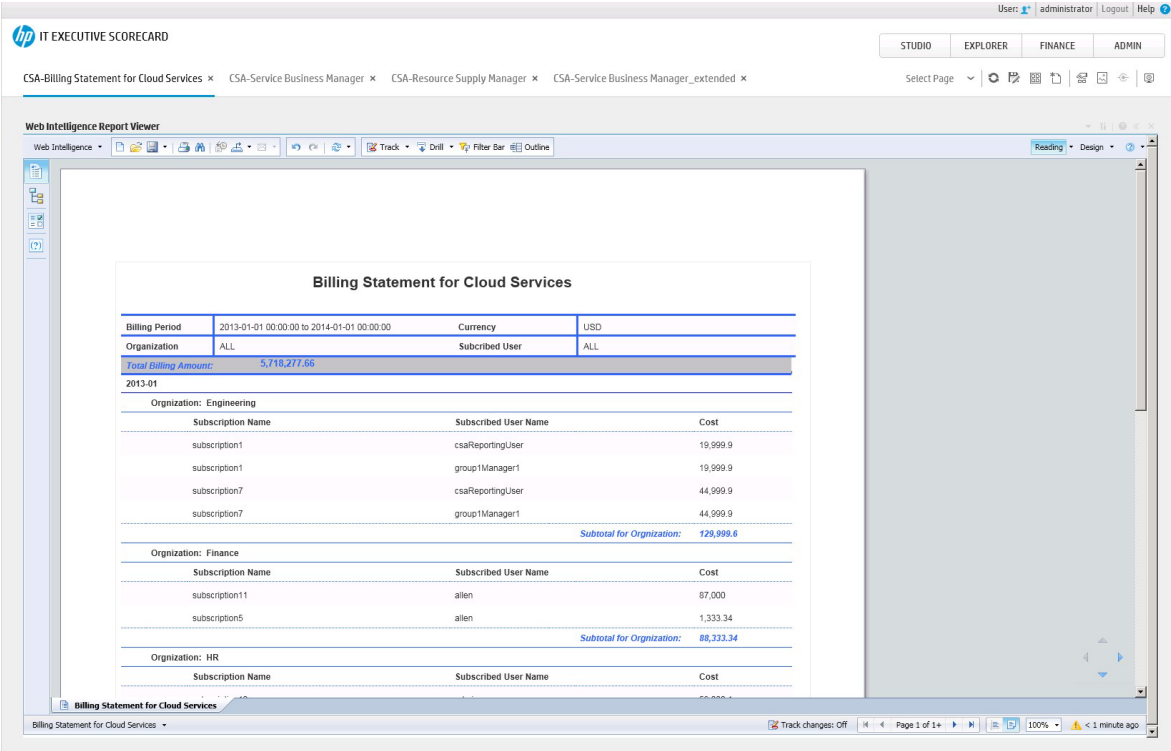
The CSA\_CAP\_Demo and CSA\_CAP CAPs include data from data sources.

### Report

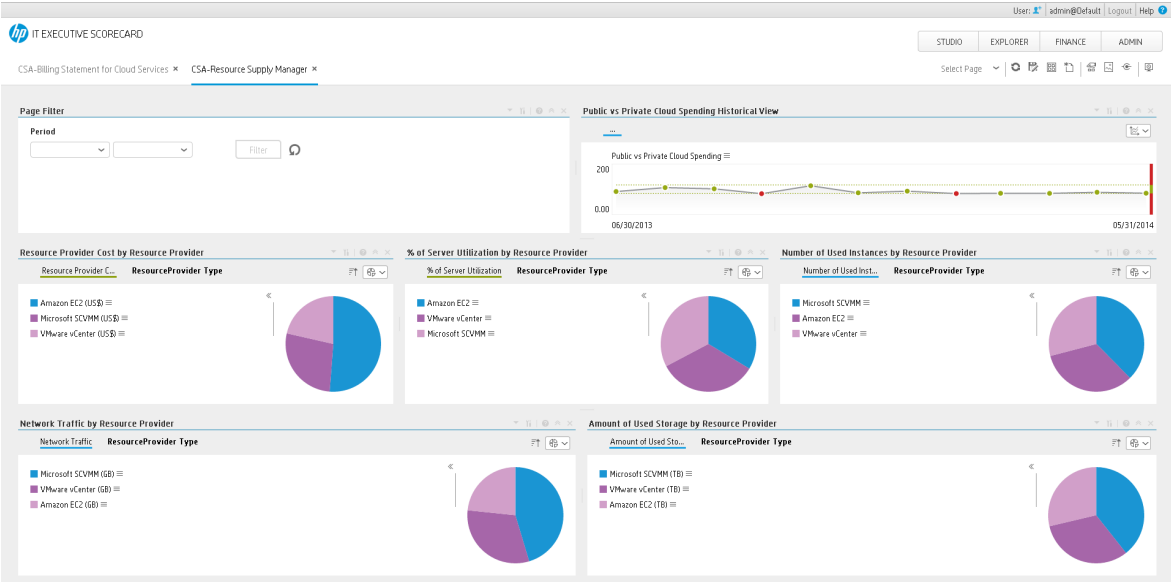
The Billing Statement for Cloud Service report displays the subscription cost incurred by each organization during the time period you specified when you opened the report. for details, see Billing Statement for Cloud Services Report in the *IT Executive Scorecard Reports Reference Guide*.

### Pages

### CSA-Billing Statement for Cloud Services

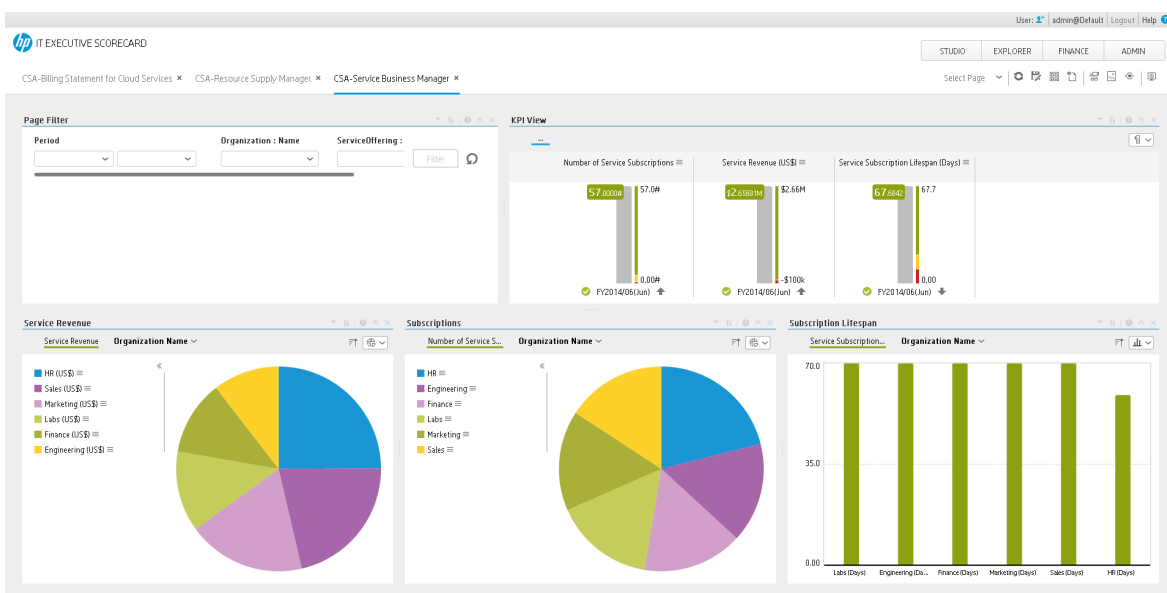


### CSA-Resource Supply Manager



- **Public vs Private Cloud Spending Historical View** - The KPI displays the ratio between the public and the private spending over time.
- **Resource Provider Cost by Resource Provider** - The average monthly cost of our resource providers per provider.
- **% of Server Utilization by Resource Provider** - The average of percentages of CPU utilization at instance level per provider.
- **Number of Used Instances by Resource Provider** - The number of dedicated instances running in our hybrid cloud environment, per provider.
- **Network Traffic by Resource Provider** - The total network traffic, per provider.
- **Amount of Used Storage by Resource Provider** - The number of terabytes (TBs) of storage we are currently using., per provider.

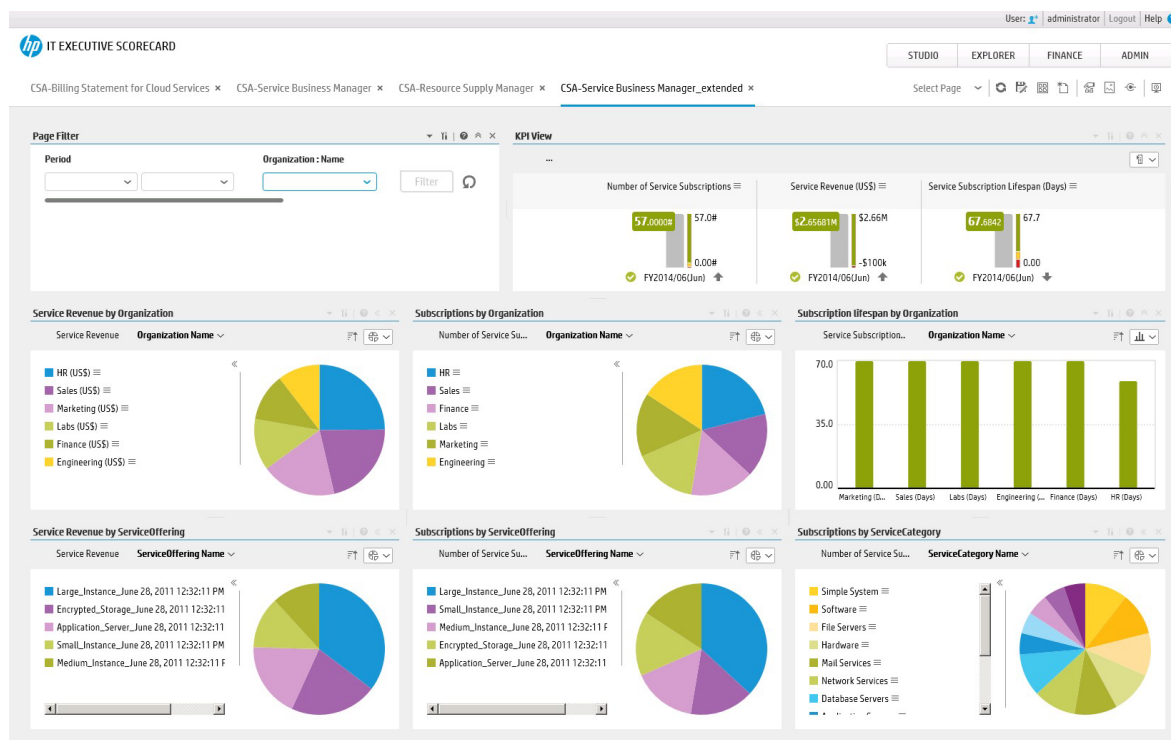
### CSA-Service Business Manager



- **KPI View:**
  - **Number of Service Subscriptions.** The number of Service Offering instances.
  - **Service Revenue.** The average revenue of service provided by IT.
  - **Service Subscription lifespan.** The average life-cycle time of a subscription to a service.
- **Service Revenue.** The average revenue of service provided by IT by organization name.
- **Subscriptions.** The number of Service Offering instances by organization name.

- **Subscription Lifespan.** The average life-cycle time of a subscription to a service, by organization name.

## CSA-Service Business Manager\_Extended



- **KPI View:**
  - **Number of Service Subscriptions.** The number of Service Offering instances.
  - **Service Revenue.** The average revenue of service provided by IT.
  - **Service Subscription lifespan.** The average life-cycle time of a subscription to a service.
- **Service Revenue by Organization.** The average revenue of service provided by IT by organization name.
- **Subscription by Organization.** The number of Service Offering instances by organization name.
- **Subscription Lifespan by Organization.** The average life-cycle time of a subscription to a service, by organization name.
- **Service Revenue by Service Offering.** The average revenue of service provided by IT, by service offering.



- **Subscriptions by Service Offering.** The number of subscriptions, by service offering.
- **Subscriptions by Service Category.** The number of subscriptions, by service category.

#### **Scorecards**

- Cloud Server Automation

#### **Out-of-the-box Business Contexts**

- CSA-CloudOptimization and CSA\_CloudOptimization\_Demo  
(["CSA\\_CloudOptimization and CSA\\_CloudOptimization\\_Demo Contexts" on page 14](#))

#### **KPIs**

- % of Server Utilization KPI
- Number of Service Subscriptions KPI
- Public vs Private Cloud Spending KPI
- Resource Provider Cost KPI
- Service Revenue KPI
- Service Subscription Lifespan KPI
- Amount of Used Storage Metric
- Network Traffic Metric
- Number of Used Instances KPI

#### **Data Files (CSV Tables)**

The data files or .CSV tables are included in the CAPs themselves and provide the context and data needed by the CAP to show data in the relevant Dashboard page.

- CSA\_BILLING\_FACT\_V
- CSA\_BUSINESS\_UNIT\_DIM\_V
- CSA\_CLOUD\_INF\_UTILIZATION\_FACT\_V
- CSA\_PERIOD\_DIM\_V
- CSA\_RESOURCE\_PROVIDER\_DIM\_V
- CSA\_PERSON\_DIM\_V
- CSA\_SERVICE\_CATEGORY\_DIM\_V

- CSA\_SERVICE\_INSTANCE\_DIM\_V
- CSA\_SERVICE\_OFFERING\_DIM\_V
- CSA\_SERVICE\_PROVIDER\_BILLING\_FACT\_V
- CSA\_SUBSCRIPTION\_DIM\_V

**Structure**

**Scorecard:** Cloud Server Automation

- **Perspective:** Resource Supply Manager
  - **Objective:** Improve Resource Utilization
    - **KPI:** % of Server Utilization
  - **Objective:** Optimize Resource Provider Relationship
    - **KPI:** Resource Provider Cost
- **Perspective:** Service Business Manager
  - **Objective:** Increase Service Profitability
    - **KPI:** Service Revenue
    - **KPI:** Service Subscription Lifespan
    - **KPI:** Number of Service Subscriptions

 **Tasks**


This section includes:

Upload and manage the Content Acceleration Pack .....	11
View the CAP-related Dashboard pages .....	11
Activate the CSA_CAP_Demo in XS .....	11
Deactivate the CSA_CAP_DEMO and activate the CSA_CAP .....	12
CSA_CloudOptimization and CSA_CloudOptimization_Demo Contexts .....	14
% of Server Utilization KPI .....	31

## Upload and manage the Content Acceleration Pack

For details , see Content Acceleration Pack in the *Content Acceleration Packs Guide*.

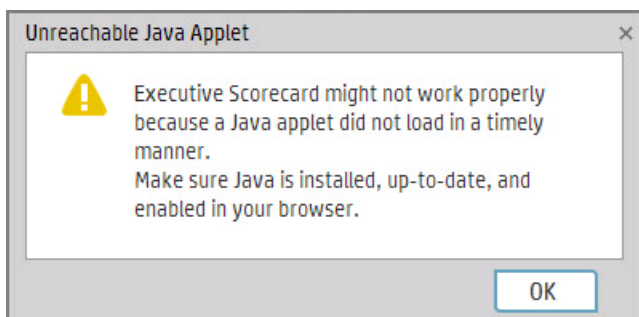
## View the CAP-related Dashboard pages

1. In the Executive Scorecard application, close all the tabs. The Dashboard is displayed.
2. Click the tab corresponding to the relevant CAP page (for details, see "[Pages](#)" on page 5) in the Dashboard. If it is not displayed, click the **Page Gallery**  button in the Dashboard toolbar, double-click the relevant page icon and close the Page Gallery dialog box.

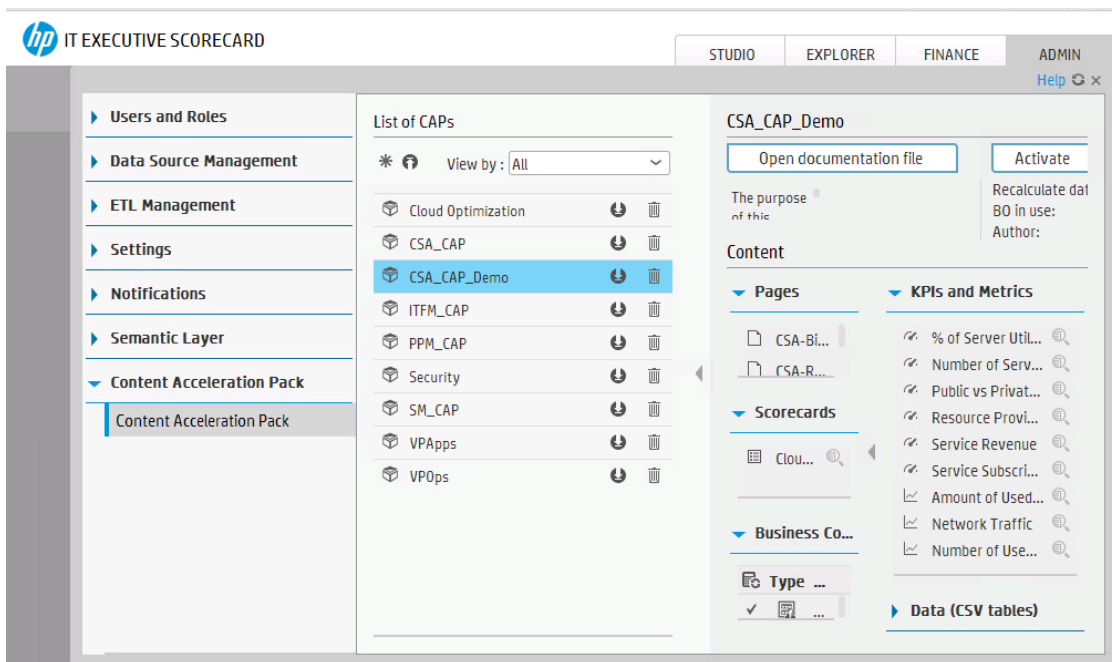
## Activate the CSA\_CAP\_Demo in XS

To activate the CSA\_CAP\_Demo you do not need to connect to a live CSA source.

1. Log on to the XS application.
2. Ignore the **Unreachable Java Applet**. Click **OK**.



3. Click the **Admin > Content Acceleration Pack > Content Acceleration Pack**.



4. Select **CSA\_CAP\_Demo** in the list of CAPs, and click **Activate** to activate the CAP. Click **Yes** to begin the activation process.  
Then wait until the CAP activation is successful.
5. Close the **ADMIN** tab.
6. In the Dashboard, click **Select Page** and select the pages that are relevant for CSA.
  - a. ["CSA\\_CAP and CSA\\_CAP\\_Demo Content Acceleration Packs" on page 5](#)
  - b. ["CSA\\_CAP and CSA\\_CAP\\_Demo Content Acceleration Packs" on page 5](#)
  - c. ["CSA-Billing Statement for Cloud Services" on page 6](#)

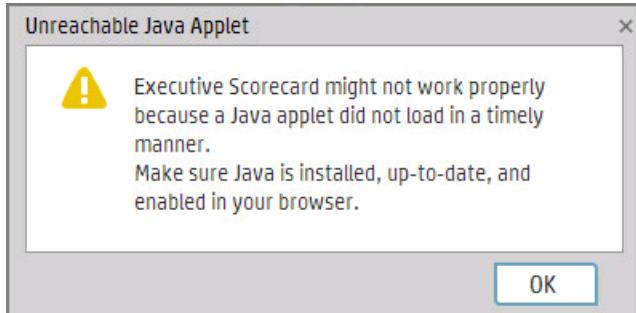
The pages display demo data.

**Note:** If the CSA-Billing Statement for Cloud page displays a blank screen with the title **Web Intelligent Report Viewer** and a shield icon  is displayed in the URL bar (top right-hand corner), click the shield and allow script to run. After a few seconds, the page will display data.

## Deactivate the CSA\_CAP\_DEMO and activate the CSA\_CAP

If you have activated the CSA\_CAP\_DEMO previously, you must deactivate it before you activate the CSA\_CAP CAP.

1. Log on to the XS application.
2. Ignore the **Unreachable Java Applet**. Click **OK**.



3. Click the **Admin > Content Acceleration Pack > Content Acceleration Pack**.
4. Select **CSA\_CAP\_Demo** in the list of CPs, and click **Deactivate** to deactivate the CAP. Click **Yes** to begin the deactivation process. Then wait until the CAP deactivation is successful.
5. Select **CSA\_CAP** in the list of CPs, and click **Activate** to activate the CAP. Click **Yes** to begin the activation process. Then wait until the CAP activation is successful.
6. Close the **ADMIN** tab.

# CSA\_CloudOptimization and CSA\_CloudOptimization\_Demo Contexts

The CSA\_CloudOptimization and CSA\_CloudOptimization\_Demo contexts gather data from several data sources: Amazon Web Services, Amazon Web Service CloudWatch, HP Cloud Service Automation, Hyper-V, and vCenter Chargeback Manager.

## To access:

In Executive Scorecard, click **Admin > Semantic Layer > Semantic Layer**. In the Context Management page, click **Launch Context Designer**. In the Context Designer page, click **Open an existing context**, and select the Context.

[Learn More](#)[Tasks](#)[UI Description](#)

## Learn More

### Data sources of the CSA\_CloudOptimization and CSA\_CloudOptimization\_Demo context

The CSA\_CloudOptimization and CSA\_CloudOptimization\_Demo contexts contain the attributes and classes that relate to the following data source:

HP Cloud Service Automation (CSA) is a platform that orchestrates the deployment of computation and infrastructure resources and of complex multi-tier application architectures. HP CSA integrates and leverages the strengths of a hybrid cloud environment, providing the ability to design and deploy enterprise-ready cloud services tailored to the business needs of your organization. It works through a catalog-based subscription process. Subscribers request and modify cloud service offerings with pre-defined pricing and other customer-specific features. Once the request is approved, through a policy-driven process, HP CSA deploys the cloud service offering using a structured lifecycle with pre-defined integration mechanisms for invoking external processes.

The integration with CSA as new content pack provides reporting analysis based on CSA data model.

## Tasks

### Display the Context

1. In Executive Scorecard, click **Admin > Semantic Layer > Semantic Layer**. The Context Management page opens.
2. The list of out-of-the-box Contexts is displayed.
3. Click **Launch Context Designer**.
4. In the Context Designer page that opens, click **Open an existing context**.

5. Select the relevant Context.

The structure of the Context is displayed.

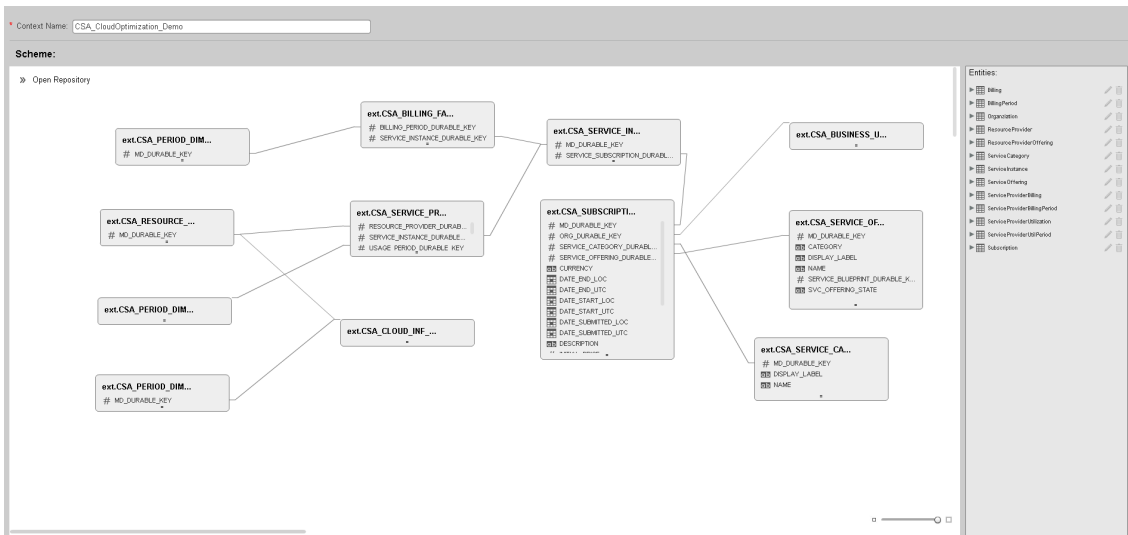
For additional details about Context Designer, see "Semantic Layer - Context Designer" on page 1 in the *IT Executive Scorecard Administrator Guide*.

 Reference

## CSA\_CloudOptimization\_Demo

### Context Tables and Structure

The contexts includes the following tables and relationships:



### Statistics

Entity Count	Field Count	Table Count	Alias Count	Join Count
12	51	12	2	11

### Model Structure

The table lists all the views and fields included in the model even when the corresponding objects have not been selected to be part of the corresponding Context.

TABLE_NAME	COLUMN_NAME	TYPE
ext.CSA_SERVICE_CATEGORY_DIM_V	DISPLAY_LABEL	nvarchar
ext.CSA_SERVICE_CATEGORY_DIM_V	NAME	nvarchar

TABLE_NAME	COLUMN_NAME	TYPE
ext.CSA_PERIOD_DIM_V	PERIODICITY	nvarchar
ext.CSA_PERIOD_DIM_V	Year	nvarchar
ext.CSA_PERIOD_DIM_V	Quarter	nvarchar
ext.CSA_PERIOD_DIM_V	Month	nvarchar
ext.CSA_PERIOD_DIM_V	Week	nvarchar
ext.CSA_PERIOD_DIM_V	Day	nvarchar
ext.CSA_SERVICE_OFFERING_DIM_V	CATEGORY	nvarchar
ext.CSA_SERVICE_OFFERING_DIM_V	DISPLAY_LABEL	nvarchar
ext.CSA_SERVICE_OFFERING_DIM_V	NAME	nvarchar
ext.CSA_SERVICE_OFFERING_DIM_V	MD_DURABLE_KEY	numeric
ext.CSA_SERVICE_OFFERING_DIM_V	SVC_OFFERING_STATE	nvarchar
ext.CSA_SERVICE_INSTANCE_DIM_V	DISPLAY_LABEL	nvarchar
ext.CSA_SERVICE_INSTANCE_DIM_V	NAME	nvarchar
ext.CSA_SERVICE_INSTANCE_DIM_V	SVC_INS_STATE	nvarchar
ext.CSA_BILLING_FACT_V	AMOUNT_BASE	numeric
ext.CSA_BILLING_FACT_V	RECURRING_FLAG	numeric
ext.CSA_RESOURCE_PROVIDER_DIM_V	FLAG_INTERNAL	nvarchar
ext.CSA_RESOURCE_PROVIDER_DIM_V	Name	nvarchar
ext.CSA_RESOURCE_PROVIDER_DIM_V	LEVEL0	nvarchar
ext.CSA_SUBSCRIPTION_DIM_V	DATE_END_LOC	datetime
ext.CSA_SUBSCRIPTION_DIM_V	DATE_START_LOC	datetime
ext.CSA_SUBSCRIPTION_DIM_V	DATE_SUBMITTED_LOC	datetime
ext.CSA_SUBSCRIPTION_DIM_V	INITIAL_PRICE	numeric
ext.CSA_SUBSCRIPTION_DIM_V	NAME	nvarchar
ext.CSA_SUBSCRIPTION_DIM_V	RECURRING_PERIOD	nvarchar
ext.CSA_SUBSCRIPTION_DIM_V	RECURRING_PRICE	numeric
ext.CSA_SUBSCRIPTION_DIM_V	STATUS	nvarchar



TABLE_NAME	COLUMN_NAME	TYPE
ext.CSA_SERVICE_PROVIDER_BILLING_FACT_V	COST_BASE	numeric
ext.CSA_SERVICE_PROVIDER_BILLING_FACT_V	USAGE_QUANTITY	numeric
ext.CSA_SERVICE_PROVIDER_BILLING_FACT_V	USAGE_TYPE	nvarchar
ext.CSA_SERVICE_PROVIDER_BILLING_FACT_V	USAGE_TYPE_CATEGORY	nvarchar
ext.CSA_SERVICE_PROVIDER_BILLING_FACT_V	VIRTUAL_INF_ID	nvarchar
ext.CSA_CLOUD_INF_UTILIZATION_FACT_V	UTILIZATION	numeric
ext.CSA_CLOUD_INF_UTILIZATION_FACT_V	UTILIZATION_TYPE	nvarchar
ext.CSA_CLOUD_INF_UTILIZATION_FACT_V	VIRTUAL_INF_ID	nvarchar
ext.CSA_BUSINESS_UNIT_DIM_V	Name	nvarchar
ext.CSA_BUSINESS_UNIT_DIM_V	ORG_TYPE	nvarchar
ext.CSA_SERVICE_CATEGORY_DIM_V	DISPLAY_LABEL	nvarchar

**Object List**

The table lists all the entities and fields of the model that were selected to be part of the Context.

Entity Name	Field Name	Source Table Name	Alias Table Name	DB Column Name	Field Type
ServiceCategory	DisplayLabel	ext.CSA_SERVICE_CATEGORY_DIM_V	NULL	DISPLAY_LABEL	nvarchar
ServiceCategory	Name	ext.CSA_SERVICE_CATEGORY_DIM_V	NULL	NAME	nvarchar
ServiceProviderBillingPeriod	PERIODICITY	ext.CSA_PERIOD_DIM_V	SERVICE_PROV_BILLING_PERIOD	PERIODICITY	nvarchar

Entity Name	Field Name	Source Table Name	Alias Table Name	DB Column Name	Field Type
ServiceProviderBillingPeriod	Year	ext.CSA_PERIOD_DIM_V	SERVICE_PROV_BILLING_PERIOD	Year	nvarchar
ServiceProviderBillingPeriod	Quarter	ext.CSA_PERIOD_DIM_V	SERVICE_PROV_BILLING_PERIOD	Quarter	nvarchar
ServiceProviderBillingPeriod	Month	ext.CSA_PERIOD_DIM_V	SERVICE_PROV_BILLING_PERIOD	Month	nvarchar
ServiceProviderBillingPeriod	Week	ext.CSA_PERIOD_DIM_V	SERVICE_PROV_BILLING_PERIOD	Week	nvarchar
ServiceProviderBillingPeriod	Day	ext.CSA_PERIOD_DIM_V	SERVICE_PROV_BILLING_PERIOD	Day	nvarchar
ServiceOffering	Category	ext.CSA_SERVICE_OFFERING_DIM_V		CATEGORY	nvarchar

Entity Name	Field Name	Source Table Name	Alias Table Name	DB Column Name	Field Type
ServiceOffering	DisplayLabel	ext.CSA_SERVICE_OFFERING_DIM_V		DISPLAY_LABEL	nvarchar
ServiceOffering	Name	ext.CSA_SERVICE_OFFERING_DIM_V		NAME	nvarchar
ServiceOffering	ServiceOfferingId	ext.CSA_SERVICE_OFFERING_DIM_V		MD_DURABLE_KEY	numeric
ServiceOffering	State	ext.CSA_SERVICE_OFFERING_DIM_V		SVC_OFFERING_STATE	nvarchar
ServiceInstance	DisplayLabel	ext.CSA_SERVICE_INSTANCE_DIM_V		DISPLAY_LABEL	nvarchar
ServiceInstance	Name	ext.CSA_SERVICE_INSTANCE_DIM_V		NAME	nvarchar
ServiceInstance	State	ext.CSA_SERVICE_INSTANCE_DIM_V		SVC_INS_STATE	nvarchar
Billing	Amount	ext.CSA_BILLING_FACT_V		AMOUNT_BASE	numeric
Billing	RecurringFlag	ext.CSA_BILLING_FACT_V		RECURRING_FLAG	numeric
ResourceProvider	IsPrivate	ext.CSA_RESOURCE_PROVIDER_DIM_V		FLAG_INTERNAL	nvarchar

Entity Name	Field Name	Source Table Name	Alias Table Name	DB Column Name	Field Type
ResourceProvider	Name	ext.CSA_RESOURCE_PROVIDER_DIM_V		Name	nvarchar
ResourceProvider	Type	ext.CSA_RESOURCE_PROVIDER_DIM_V		LEVEL0	nvarchar
Subscription	DateEnd	ext.CSA_SUBSCRIPTION_DIM_V		DATE_END_LOC	datetime
Subscription	DateStart	ext.CSA_SUBSCRIPTION_DIM_V		DATE_START_LOC	datetime
Subscription	DateSubmit	ext.CSA_SUBSCRIPTION_DIM_V		DATE_SUBMITTED_LOC	datetime
Subscription	InitialPrice	ext.CSA_SUBSCRIPTION_DIM_V		INITIAL_PRICE	numeric
Subscription	Name	ext.CSA_SUBSCRIPTION_DIM_V		NAME	nvarchar
Subscription	RecurringPeriod	ext.CSA_SUBSCRIPTION_DIM_V		RECURRING_PERIOD	nvarchar
Subscription	RecurringPrice	ext.CSA_SUBSCRIPTION_DIM_V		RECURRING_PRICE	numeric
Subscription	Status	ext.CSA_SUBSCRIPTION_DIM_V		STATUS	nvarchar
ServiceProviderBilling	Cost	ext.CSA_SERVICE_PROVIDER_BILLING_FACT_V		COST_BASE	numeric

Entity Name	Field Name	Source Table Name	Alias Table Name	DB Column Name	Field Type
ServiceProviderBilling	UsageQuantity	ext.CSA_SERVICE_PROVIDER_BILLING_FACT_V		USAGE_QUANTITY	numeric
ServiceProviderBilling	UsageType	ext.CSA_SERVICE_PROVIDER_BILLING_FACT_V		USAGE_TYPE	nvarchar
ServiceProviderBilling	UsageTypeCategory	ext.CSA_SERVICE_PROVIDER_BILLING_FACT_V		USAGE_TYPE_CATEGORY	nvarchar
ServiceProviderBilling	VirtualInfraStructureId	ext.CSA_SERVICE_PROVIDER_BILLING_FACT_V		VIRTUAL_INF_ID	nvarchar
ServiceProviderUtilization	AvgUtilization	ext.CSA_CLOUD_INF_UTILIZATION_FACT_V		UTILIZATION	numeric
ServiceProviderUtilization	UtilizationType	ext.CSA_CLOUD_INF_UTILIZATION_FACT_V		UTILIZATION_TYPE	nvarchar
ServiceProviderUtilization	VirtualInfraStructureId	ext.CSA_CLOUD_INF_UTILIZATION_FACT_V		VIRTUAL_INF_ID	nvarchar
Organization	Name	ext.CSA_BUSINESS_UNIT_DIM_V		Name	nvarchar
Organization	Type	ext.CSA_BUSINESS_UNIT_DIM_V		ORG_TYPE	nvarchar

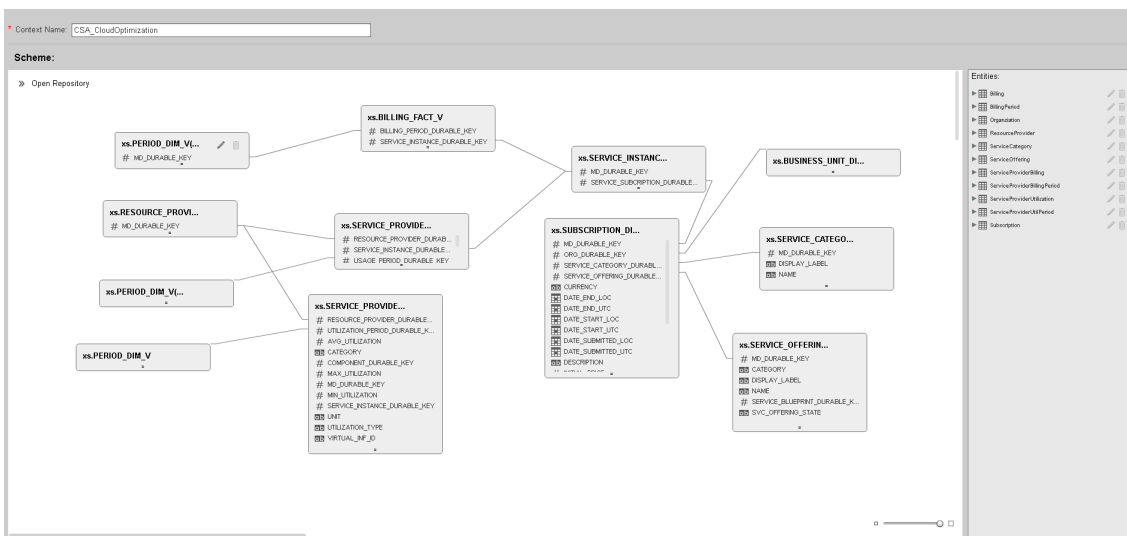
Entity Name	Field Name	Source Table Name	Alias Table Name	DB Column Name	Field Type
BillingPeriod	PERIODICITY	ext.CSA_PERIOD_DIM_V	BILLING_PERIOD	PERIODICITY	nvarchar
BillingPeriod	Year	ext.CSA_PERIOD_DIM_V	BILLING_PERIOD	Year	nvarchar
BillingPeriod	Quarter	ext.CSA_PERIOD_DIM_V	BILLING_PERIOD	Quarter	nvarchar
BillingPeriod	Month	ext.CSA_PERIOD_DIM_V	BILLING_PERIOD	Month	nvarchar
BillingPeriod	Week	ext.CSA_PERIOD_DIM_V	BILLING_PERIOD	Week	nvarchar
BillingPeriod	Day	ext.CSA_PERIOD_DIM_V	BILLING_PERIOD	Day	nvarchar
ServiceProviderUtilPeriod	PERIODICITY	ext.CSA_PERIOD_DIM_V		PERIODICITY	nvarchar
ServiceProviderUtilPeriod	Year	ext.CSA_PERIOD_DIM_V		Year	nvarchar
ServiceProviderUtilPeriod	Quarter	ext.CSA_PERIOD_DIM_V		Quarter	nvarchar
ServiceProviderUtilPeriod	Month	ext.CSA_PERIOD_DIM_V		Month	nvarchar

Entity Name	Field Name	Source Table Name	Alias Table Name	DB Column Name	Field Type
ServiceProviderUtilPeriod	Week	ext.CSA_PERIOD_DIM_V		Week	nvarchar

## CSA\_CloudOptimization

### Context Tables and Structure

The contexts includes the following tables and relationships:



### Statistics

Entity Count	Field Count	Table Count	Alias Count	Join Count
12	51	12	2	11

### Model Structure

The table lists all the views and fields included in the model even when the corresponding objects have not been selected to be part of the corresponding Context.

TABLE_NAME	COLUMN_NAME	TYPE
xs.SERVICE_CATEGORY_DIM_V	DISPLAY_LABEL	nvarchar
xs.SERVICE_CATEGORY_DIM_V	NAME	nvarchar
xs.PERIOD_DIM_V	PERIODICITY	nvarchar
xs.PERIOD_DIM_V	Year	nvarchar

TABLE_NAME	COLUMN_NAME	TYPE
xs.PERIOD_DIM_V	Quarter	nvarchar
xs.PERIOD_DIM_V	Month	nvarchar
xs.PERIOD_DIM_V	Week	nvarchar
xs.PERIOD_DIM_V	Day	nvarchar
xs.SERVICE_OFFERING_DIM_V	CATEGORY	nvarchar
xs.SERVICE_OFFERING_DIM_V	DISPLAY_LABEL	nvarchar
xs.SERVICE_OFFERING_DIM_V	NAME	nvarchar
xs.SERVICE_OFFERING_DIM_V	MD_DURABLE_KEY	numeric
xs.SERVICE_OFFERING_DIM_V	SVC_OFFERING_STATE	nvarchar
xs.SERVICE_INSTANCE_DIM_V	DISPLAY_LABEL	nvarchar
xs.SERVICE_INSTANCE_DIM_V	NAME	nvarchar
xs.SERVICE_INSTANCE_DIM_V	SVC_INS_STATE	nvarchar
xs.BILLING_FACT_V	AMOUNT_BASE	numeric
xs.BILLING_FACT_V	RECURRING_FLAG	numeric
xs.RESOURCE_PROVIDER_DIM_V	FLAG_INTERNAL	nvarchar
xs.RESOURCE_PROVIDER_DIM_V	Name	nvarchar
xs.RESOURCE_PROVIDER_DIM_V	LEVEL0	nvarchar
xs.SUBSCRIPTION_DIM_V	DATE_END_LOC	datetime
xs.SUBSCRIPTION_DIM_V	DATE_START_LOC	datetime
xs.SUBSCRIPTION_DIM_V	DATE_SUBMITTED_LOC	datetime
xs.SUBSCRIPTION_DIM_V	INITIAL_PRICE	numeric
xs.SUBSCRIPTION_DIM_V	NAME	nvarchar
xs.SUBSCRIPTION_DIM_V	RECURRING_PERIOD	nvarchar
xs.SUBSCRIPTION_DIM_V	RECURRING_PRICE	numeric
xs.SUBSCRIPTION_DIM_V	STATUS	nvarchar
xs.SERVICE_PROVIDER_BILLING_FACT_V	COST_BASE	numeric
xs.SERVICE_PROVIDER_BILLING_FACT_V	USAGE_QUANTITY	numeric



TABLE_NAME	COLUMN_NAME	TYPE
xs.SERVICE_PROVIDER_BILLING_FACT_V	USAGE_TYPE	nvarchar
xs.SERVICE_PROVIDER_BILLING_FACT_V	USAGE_TYPE_CATEGORY	nvarchar
xs.SERVICE_PROVIDER_BILLING_FACT_V	VIRTUAL_INF_ID	nvarchar
xs.SERVICE_PROVIDER_UTILIZATION_FACT_V	UTILIZATION	numeric
xs.SERVICE_PROVIDER_UTILIZATION_FACT_V	UTILIZATION_TYPE	nvarchar
xs.SERVICE_PROVIDER_UTILIZATION_FACT_V	VIRTUAL_INF_ID	nvarchar
xs.BUSINESS_UNIT_DIM_V	Name	nvarchar
xs.BUSINESS_UNIT_DIM_V	ORG_TYPE	nvarchar

**Object List**

The table lists all the entities and fields of the model that were selected to be part of the Context.

Entity Name	Field Name	Source Table	Alias Table Name	DB Column Name	Field Type
ServiceCategory	DisplayLabel	xs.SERVICE_CATEGORY_DIM_V	NULL	DISPLAY_LABEL	nvarchar
ServiceCategory	Name	xs.SERVICE_CATEGORY_DIM_V	NULL	NAME	nvarchar
ServiceProviderBilling Period	PERIODICITY	xs.PERIOD_DIM_V	SERVICE_PROV_BILLING_PERIOD	PERIODICITY	nvarchar
ServiceProviderBilling Period	Year	xs.PERIOD_DIM_V	SERVICE_PROV_BILLING_PERIOD	Year	nvarchar

Entity Name	Field Name	Source Table	Alias Table Name	DB Column Name	Field Type
ServiceProviderBilling Period	Quarter	xs.PERIOD_DIM_V	SERVICE_PROV_BILLING_PERIOD	Quarter	nvarchar
ServiceProviderBilling Period	Month	xs.PERIOD_DIM_V	SERVICE_PROV_BILLING_PERIOD	Month	nvarchar
ServiceProviderBilling Period	Week	xs.PERIOD_DIM_V	SERVICE_PROV_BILLING_PERIOD	Week	nvarchar
ServiceProviderBilling Period	Day	xs.PERIOD_DIM_V	SERVICE_PROV_BILLING_PERIOD	Day	nvarchar
ServiceOffering	Category	xs.SERVICE_OFFERING_DIM_V		CATEGORY	nvarchar
ServiceOffering	DisplayLabel	xs.SERVICE_OFFERING_DIM_V		DISPLAY_LABEL	nvarchar
ServiceOffering	Name	xs.SERVICE_OFFERING_DIM_V		NAME	nvarchar

Entity Name	Field Name	Source Table	Alias Table Name	DB Column Name	Field Type
ServiceOffering	ServiceOfferingId	xs.SERVICE_OFFERING_DIM_V		MD_DURABLE_KEY	numeric
ServiceOffering	State	xs.SERVICE_OFFERING_DIM_V		SVC_OFFERING_STATE	nvarchar
ServiceInstance	DisplayLabel	xs.SERVICE_INSTANCE_DIM_V		DISPLAY_LABEL	nvarchar
ServiceInstance	Name	xs.SERVICE_INSTANCE_DIM_V		NAME	nvarchar
ServiceInstance	State	xs.SERVICE_INSTANCE_DIM_V		SVC_INS_STATE	nvarchar
Billing	Amount	xs.BILLING_FACT_V		AMOUNT_BASE	numeric
Billing	RecurringFlag	xs.BILLING_FACT_V		RECURRING_FLAG	numeric
ResourceProvider	IsPrivate	xs.RESOURCE_PROVIDER_DIM_V		FLAG_INTERNAL	nvarchar
ResourceProvider	Name	xs.RESOURCE_PROVIDER_DIM_V		Name	nvarchar
ResourceProvider	Type	xs.RESOURCE_PROVIDER_DIM_V		LEVEL0	nvarchar
Subscription	DateEnd	xs.SUBSCRIPTION_DIM_V		DATE_END_LOC	datetime
Subscription	DateStart	xs.SUBSCRIPTION_DIM_V		DATE_START_LOC	datetime


Entity Name	Field Name	Source Table	Alias Table Name	DB Column Name	Field Type
Subscription	DateSubmit	xs.SUBSCRIPTION_DIM_V		DATE_SUBMITTED_LOC	datetime
Subscription	InitialPrice	xs.SUBSCRIPTION_DIM_V		INITIAL_PRICE	numeric
Subscription	Name	xs.SUBSCRIPTION_DIM_V		NAME	nvarchar
Subscription	RecurringPeriod	xs.SUBSCRIPTION_DIM_V		RECURRING_PERIOD	nvarchar
Subscription	RecurringPrice	xs.SUBSCRIPTION_DIM_V		RECURRING_PRICE	numeric
Subscription	Status	xs.SUBSCRIPTION_DIM_V		STATUS	nvarchar
ServiceProviderBilling	Cost	xs.SERVICE_PROVIDER_BILLING_FACT_V		COST_BASE	numeric
ServiceProviderBilling	UsageQuantity	xs.SERVICE_PROVIDER_BILLING_FACT_V		USAGE_QUANTITY	numeric
ServiceProviderBilling	UsageType	xs.SERVICE_PROVIDER_BILLING_FACT_V		USAGE_TYPE	nvarchar
ServiceProviderBilling	UsageTypeCategory	xs.SERVICE_PROVIDER_BILLING_FACT_V		USAGE_TYPE_CATEGORY	nvarchar

Entity Name	Field Name	Source Table	Alias Table Name	DB Column Name	Field Type
ServiceProviderBilling	VirtualInfraStructureId	xs.SERVICE_PROVIDER_BILLING_FACT_V		VIRTUAL_INF_ID	nvarchar
ServiceProviderUtilization	AvgUtilization	xs.SERVICE_PROVIDER_UTILIZATION_FACT_V		UTILIZATION	numeric
ServiceProviderUtilization	UtilizationType	xs.SERVICE_PROVIDER_UTILIZATION_FACT_V		UTILIZATION_TYPE	nvarchar
ServiceProviderUtilization	VirtualInfraStructureId	xs.SERVICE_PROVIDER_UTILIZATION_FACT_V		VIRTUAL_INF_ID	nvarchar
Organization	Name	xs.BUSINESS_UNIT_DIM_V		Name	nvarchar
Organization	Type	xs.BUSINESS_UNIT_DIM_V		ORG_TYPE	nvarchar
BillingPeriod	PERIODICITY	xs.PERIOD_DIM_V	BILLING_PERIOD	PERIODICITY	nvarchar
BillingPeriod	Year	xs.PERIOD_DIM_V	BILLING_PERIOD	Year	nvarchar
BillingPeriod	Quarter	xs.PERIOD_DIM_V	BILLING_PERIOD	Quarter	nvarchar
BillingPeriod	Month	xs.PERIOD_DIM_V	BILLING_PERIOD	Month	nvarchar

Entity Name	Field Name	Source Table	Alias Table Name	DB Column Name	Field Type
BillingPeriod	Week	xs.PERIOD_DIM_V	BILLING_PERIOD	Week	nvarchar
BillingPeriod	Day	xs.PERIOD_DIM_V	BILLING_PERIOD	Day	nvarchar
ServiceProviderUtilPeriod	PERIODICITY	xs.PERIOD_DIM_V		PERIODICITY	nvarchar
ServiceProviderUtilPeriod	Year	xs.PERIOD_DIM_V		Year	nvarchar
ServiceProviderUtilPeriod	Quarter	xs.PERIOD_DIM_V		Quarter	nvarchar
ServiceProviderUtilPeriod	Month	xs.PERIOD_DIM_V		Month	nvarchar
ServiceProviderUtilPeriod	Week	xs.PERIOD_DIM_V		Week	nvarchar
ServiceProviderUtilPeriod	Day	xs.PERIOD_DIM_V		Day	nvarchar

## % of Server Utilization KPI

**Note:** This KPI is currently only available with demo data for the CSA\_CAP and CSA\_CAP\_Demo CAPs.

<b>Component Type</b>	KPI
<b>Business Questions</b>	Make sure our resources are utilized efficiently
<b>Business Objective</b>	Node/Infra Service
<b>Description</b>	The average of percentages of CPU utilization at instance level.
<b>Context</b>	CSA_CloudOptimization_Demo/CSA_CloudOptimization
<b>Data source</b>	.csv files/CSA
<b>Formula</b>	AVG(ServiceProviderUtilization.AvgUtilization , ResourceProvider.Type is not null and ServiceProviderUtilization.UtilizationType='CPUUtilization' and PERIOD_ENTITY = ServiceProviderUtilPeriod )
<b>KPI Formula Filter</b>	N/A
<b>Unit Type</b>	%
<b>Time Period</b>	Daily
<b>Direction</b>	Centralize
<b>Thresholds</b>	
<b>Release</b>	9.50

## Send Documentation Feedback

If you have comments about this document, you can [contact the documentation team](#) by email. If an email client is configured on this system, click the link above and an email window opens with the following information in the subject line:

**Feedback on CSA\_CAP and CSA\_CAP\_Demo Content Acceleration Pack Guide (IT Executive Scorecard 9.50)**

Just add your feedback to the email and click send.

If no email client is available, copy the information above to a new message in a web mail client, and send your feedback to [SW-Doc@hp.com](mailto:SW-Doc@hp.com).

We appreciate your feedback!



