



HP Virtualization Performance Viewer

Software Version: 2.10

Linux operating system

Getting Started Guide for Virtual Appliance

Document Release Date: December 2014
Software Release Date: December 2014

Legal Notices

Warranty

The only warranties for HP products and services are set forth in the express warranty statements accompanying such products and services. Nothing herein should be construed as constituting an additional warranty. HP shall not be liable for technical or editorial errors or omissions contained herein.

The information contained herein is subject to change without notice.

Restricted Rights Legend

Confidential computer software. Valid license from HP required for possession, use or copying. Consistent with FAR 12.211 and 12.212, Commercial Computer Software, Computer Software Documentation, and Technical Data for Commercial Items are licensed to the U.S. Government under vendor's standard commercial license.

Copyright Notice

© Copyright 2013-2014 Hewlett-Packard Development Company, L.P.

Trademark Notices

Adobe® is a trademark of Adobe Systems Incorporated.

Microsoft® and Windows® are U.S. registered trademarks of the Microsoft group of companies.

Java is a registered trademark of Oracle and/or its affiliates.

Acknowledgements

This product includes software developed by the Apache Software Foundation (<http://www.apache.org/>).

This product includes software developed by the OpenSSL Project for use in the OpenSSL Toolkit (<http://www.openssl.org/>)

This product includes cryptographic software written by Eric Young (ey@cryptsoft.com)

This product includes software written by Tim Hudson (tjh@cryptsoft.com)

This product includes software developed by the Apache Software Foundation (<http://www.apache.org/>).

Documentation Updates

The title page of this document contains the following identifying information:

- Software Version number, which indicates the software version.
- Document Release Date, which changes each time the document is updated.
- Software Release Date, which indicates the release date of this version of the software.

To check for recent updates or to verify that you are using the most recent edition of a document, go to: <http://h20230.www2.hp.com/selfsolve/manuals>

This site requires that you register for an HP Passport and sign in. To register for an HP Passport ID, go to: <http://h20229.www2.hp.com/passport-registration.html>

Or click the **New users - please register** link on the HP Passport login page.

You will also receive updated or new editions if you subscribe to the appropriate product support service. Contact your HP sales representative for details.

Support

Visit the HP Software Support Online web site at: <http://www.hp.com/go/hpsoftwaresupport>

This web site provides contact information and details about the products, services, and support that HP Software offers.

HP Software online support provides customer self-solve capabilities. It provides a fast and efficient way to access interactive technical support tools needed to manage your business. As a valued support customer, you can benefit by using the support web site to:

- Search for knowledge documents of interest
- Submit and track support cases and enhancement requests
- Download software patches
- Manage support contracts

- Look up HP support contacts
- Review information about available services
- Enter into discussions with other software customers
- Research and register for software training

Most of the support areas require that you register as an HP Passport user and sign in. Many also require a support contract. To register for an HP Passport ID, go to:

<http://h20229.www2.hp.com/passport-registration.html>

To find more information about access levels, go to:

http://h20230.www2.hp.com/new_access_levels.jsp

HP Software Solutions Now accesses the HPSW Solution and Integration Portal Web site. This site enables you to explore HP Product Solutions to meet your business needs, includes a full list of Integrations between HP Products, as well as a listing of ITIL Processes. The URL for this Web site is **<http://h20230.www2.hp.com/sc/solutions/index.jsp>**

Contents

Chapter 1: Introduction	5
Chapter 2: Installing HP vPV	6
Prerequisites	6
Deploy the HP vPV Virtual Appliance	6
Upgrading HP vPV from Earlier Versions to HP vPV 2.10	7
Upgrading HP vPV using the Virtual Appliance	8
Verify the Upgrade	10
Chapter 3: Accessing the HP vPV interface	11
Adding Data Sources	12
Chapter 4: Licensing	13
Types of Licenses	13
Activating the Evaluation License	14
Chapter 5: Troubleshooting	15
Chapter 6: HP vPV Community	20
Send Documentation Feedback	21

Chapter 1: Introduction

HP Virtualization Performance Viewer (HP vPV) is a web-based analysis and visualization tool that analyzes the performance trends of elements in virtualized environments. It enables virtualization monitoring by providing an overview of the environment, near-real-time and historical data analysis and triaging using an interactive dashboard. It also enables monitoring for cloud and hypervisor environments. HP vPV helps you visualize performance data for elements in the context of each other to rapidly analyze bottlenecks. HP vPV provides performance monitoring, graphing, and reporting in a single interface. You can use HP vPV to do the following:

Performance Monitoring

- **Dashboard** provides quick and easy navigation to other HP vPV views.
- **Treemap** provides the graphical representation of the health of the environment. You can also identify and view the problems at a glance. Treemap provides quick analysis of the entities such as Datacenter, Host, or VMs.
- **Workbench** helps you to visualize and triage the performance of the monitored resources. You can troubleshoot problems that occurred in the past for a specific time period. You can draw and view graphs with the help of available metrics. Additionally, you can save frequently used graphs as favorites.
- **Alerts** help you to identify and troubleshoot the problems generated in your virtualized environment.
- **Real Time Guest Drill Down** detects overloads in the environment. You can drill down to determine the performance overload issue in VMs.

Capacity Analysis and Optimization

- **Capacity Overview** provides right size recommendation of the resources in the environment.
- **Placement** provides suggestions for adding new VMs based on available or reclaimable capacity.
- **Forecast** helps to project future capacity utilization levels of different resources for a predefined time period. Using the Forecast feature, you can determine the Days to Capacity information to make optimal allocation and placement.
- **Modeler** helps to determine the impact of adding or deleting resources in your environment. You can estimate the future capacity utilization to proactively plan your hardware requirements.

Chapter 2: Installing HP vPV

HP vPV is available as a virtual appliance for easy deployment in the VMware vCenter. You can use the VMware vSphere client interface to deploy the HP vPV virtual appliance.

You can download the HP vPV virtual appliance from: <http://www.hp.com/go/vpv>. You can install the HP vPV virtual appliance using the **Deploy OVF Template** functionality of the VMware vSphere client. To log on to the virtual appliance, the username is **root** and password is **vperf*viewer**. For more information, see the *VMware documentation*.

Prerequisites

Following are the prerequisites for installing HP vPV:

- Ensure that port 8081 is open to make HP vPV accessible from the remote browser, if there is a firewall on the system where HP vPV is installed.
- Ensure that port 8444 is open to access in Hypertext Transfer Protocol Secure (HTTPS) mode.
- Ensure that the port used for accessing HP vPV (8081, by default) is open in the firewall, if there is a firewall between HP vPV and Microsoft System Center Virtual Machine Manager (SCVMM) server.
- Ensure that the port 5480 is open to access the Virtual Appliance Management Interface (VAMI).

Deploy the HP vPV Virtual Appliance

HP vPV is available as a Virtual Appliance for easy deployment in vCenter. You can use the VMware vSphere Client user interface to deploy the virtual appliance.

The supported VMware vCenter Server versions are 5.0, 5.1, and 5.5.

To deploy the HP vPV virtual appliance, follow these steps:

1. Open VMware vSphere Client.
2. Type the credentials and click **Login**.
3. Select **File > Deploy OVF Template**. The **Deploy OVF Template** window opens.
4. Click **Browse** to browse to the location where you have saved the HP vPV virtual appliance file.
5. Click **Next**. The window shows the details of virtual appliance.

6. Click **Next**. The End User License Agreement details appear.
7. Click **Accept** and then click **Next**.
8. Type a name for the virtual appliance in the **Name** field.
9. Select where to deploy the virtual appliance from the **Inventory Location** tree. Click **Next**.
10. Select the host or cluster where you want the virtual appliance to run. Click **Next**.
11. Select the specific host where to run the virtual appliance. Click **Next**.
12. Select the storage location where you want to store the virtual machine files. Click **Next**.
13. Select the disk format in which you want to store the virtual disks. Click **Next**.
14. Type the required Networking Properties and click **Next**. The window shows the details of the deployment.
15. Select the **Power on after deployment** check box.
16. Click **Finish**. The deployment task starts. After deployment, the virtual appliance name appears in the tree in the VMware vSphere Client user interface.

Note: For more information, see the VMware documentation. The steps are subject to change based on VMware.

Logging in to the Virtual Appliance

You can log in to the HP vPV Virtual Appliance using the username as **root**. The default password is **vperfr*viewer** and it is recommended to change the password after logging in.

Here is a [short video](#) on deploying the HP vPV Virtual Appliance and getting started with HP vPV.

Upgrading HP vPV from Earlier Versions to HP vPV 2.10

You can upgrade HP vPV to version 2.10 only from versions 2.00 and 2.01. The following table lists the supported upgrade scenarios from earlier versions of HP vPV to HP vPV 2.10:

Upgrade Scenario	Procedure
Upgrade HP vPV from version 2.00 to version 2.10	You can upgrade to HP vPV 2.10 using the Virtual Appliance. For more information, see the Upgrading HP vPV using the Virtual Appliance section.

Upgrade Scenario	Procedure
Upgrade HP vPV from version 2.01 to version 2.10	You can upgrade to HP vPV 2.10 using the Virtual Appliance. For more information, see the Upgrading HP vPV using the Virtual Appliance section.


Note: Make sure that you take a snapshot of the existing HP vPV machine before upgrading to 2.10 as rollback is not supported.

Upgrading HP vPV using the Virtual Appliance

If you already have an earlier version of HP vPV deployed on the virtual appliance and want to upgrade to version 2.10, you can do it in the following two ways:

- ["Using CDROM Updates \(Using .iso\)"](#)
- ["Using Specified Repository \(Using .zip\)"](#)

Using CDROM Updates (Using .iso)

1. Log on to VMware vSphere Client.
2. In the left tree pane, select the HP vPV machine that is to be upgraded.
3. Click the **Connect/disconnect CD/DVD devices of the virtual machine**  icon. Select **CD/DVD drive1**.
4. Click **Connect to ISO image on local disk**. Windows Explorer appears.
5. Select the `[[[Undefined variable OVPMinstallGuide.UpdateISO]]].iso` file. Click **Open**.
6. In the HP vPV interface, select **Admin** and click the **Data Sources** tab.
7. Launch the HP vPV Virtual Appliance Management web interface using the link provided at the bottom of the page.
8. Log on to the HP vPV Virtual Appliance using the username as **root**. The default password is **vperf*viewer**.
9. Click **Update** tab. The **Update Status** page appears.
10. Click **Settings**. The **Update Settings** page appears.
11. In the **Update Repository** section, select **Use CDROM Updates**.

12. Click **Status**. The **Update Status** page appears.
13. Click **Check Updates**. The available updates appear.
14. Select the update and click **Install Updates**. The upgrade process begins.
15. After the upgrade process is complete, 'HP vPV 2.10 upgrade has been successfully completed.' message appears.
16. Log on to the HP vPV machine where version 2.10 has been installed.
17. Go to the command prompt and run the following commands to update the OpenSSL software used by VMware on the HP vPV machine:

```
yes | cp -f /usr/lib64/libssl.so.1.0.1e /opt/vmware/lib/libssl.so.0.9.8  
yes | cp -f /usr/lib64/libssl.so.1.0.1e /opt/vmware/lib/libssl.so.0.9.8r  
yes | cp -f /usr/lib64/libcrypto.so.1.0.1e /opt/vmware/lib/libcrypto.so.0.9.8  
yes | cp -f /usr/lib64/libcrypto.so.1.0.1e /opt/vmware/lib/libcrypto.so.0.9.8r  
/etc/init.d/vami-sfcb restart  
/etc/init.d/vami-lighttpd restart
```

The OpenSSL software is updated with the latest updates.

Using Specified Repository (Using .zip)

1. Download and unzip [[[Undefined variable OVPMinstallGuide.UpdateISO]]].zip in the Web folder at the server (Web or FTP) location.
2. Launch the HP vPV Virtual Appliance Management web interface using the link provided at the bottom of the page.
3. Log on to the HP vPV Virtual Appliance using the username as **root**. The default password is **vperf*viewer**.
4. Click **Update** tab. The **Update Status** page appears.
5. Click **Settings**. The **Update Settings** page appears.
6. In the **Update Repository** section, select **Use Specified Repository**.
7. In the **Repository URL** box, type the server location where the update file is placed.
8. In the **Username** and **Password** box, type the User name and Password, if any.
9. Click **Save Settings**.

10. Click **Status**. The **Update Status** page appears.
11. Click **Check Updates**. The available updates appear.
12. Select the update and click **Install Updates**. The upgrade process begins.
13. After the upgrade process is complete, 'HP vPV 2.10 upgrade has been successfully completed.' message appears.
14. Log on to the HP vPV machine where version 2.10 has been installed.
15. Go to the command prompt and run the following commands to update the OpenSSL software used by VMware on the HP vPV machine:

```
yes | cp -f /usr/lib64/libssl.so.1.0.1e /opt/vmware/lib/libssl.so.0.9.8  
yes | cp -f /usr/lib64/libssl.so.1.0.1e /opt/vmware/lib/libssl.so.0.9.8r  
yes | cp -f /usr/lib64/libcrypto.so.1.0.1e /opt/vmware/lib/libcrypto.so.0.9.8  
yes | cp -f /usr/lib64/libcrypto.so.1.0.1e /opt/vmware/lib/libcrypto.so.0.9.8r  
  
/etc/init.d/vami-sfcb restart  
  
/etc/init.d/vami-lighttp restart
```

The OpenSSL software is updated with the latest updates.

Verify the Upgrade

You can verify the upgrade to HP vPV version 2.10 by performing either of the following:

- In the HP vPV interface, go to the Help icon and click **About HP vPV**. A dialog box appears with the version information.
- Verify the version by running the following command at the command prompt:

```
pv version
```

Note: After the upgrade, it is recommended to check the status of HP vPV processes using the following command:

```
/opt/OV/bin/ovc
```

If any of the processes are not running, run the following command to restart the processes:

```
pv restart
```

Chapter 3: Accessing the HP vPV interface

After HP vPV is installed successfully, access the HP vPV interface using one of the following URL:

https://<system_name>:<port_number>/PV

In this instance,

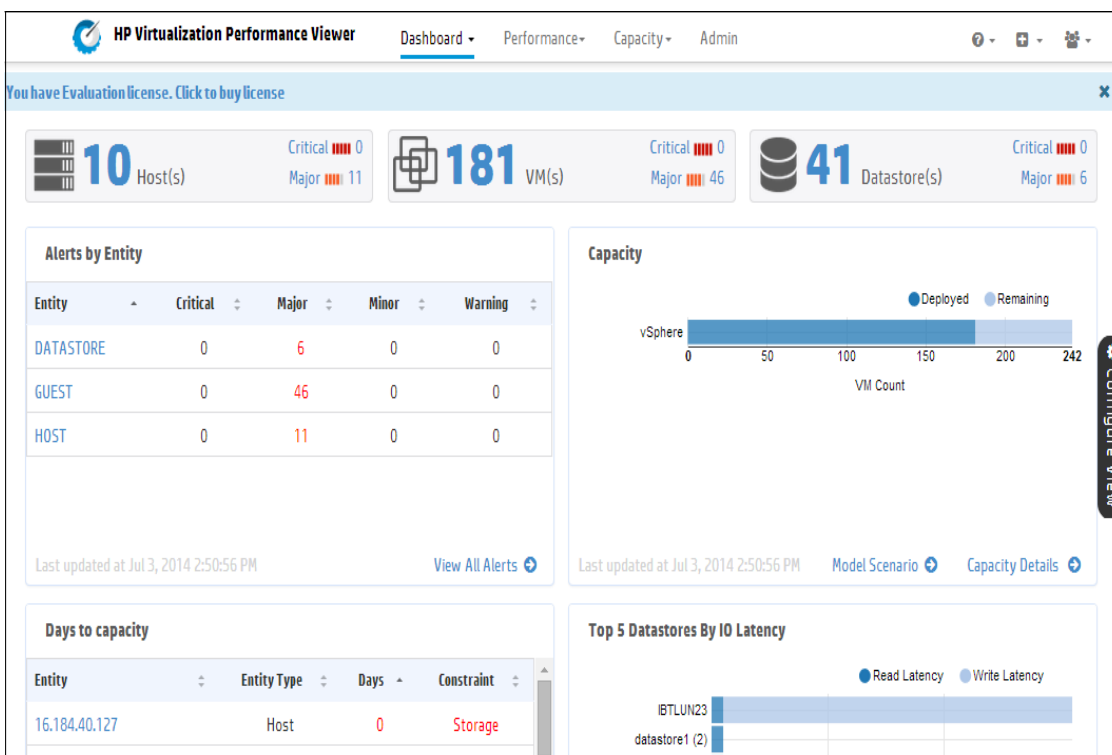
<system_name> is the IP address or host name of the HP vPV server.

<port_number> is the port number on which HP vPV is configured. The default port number is 8444.

PV is case sensitive.

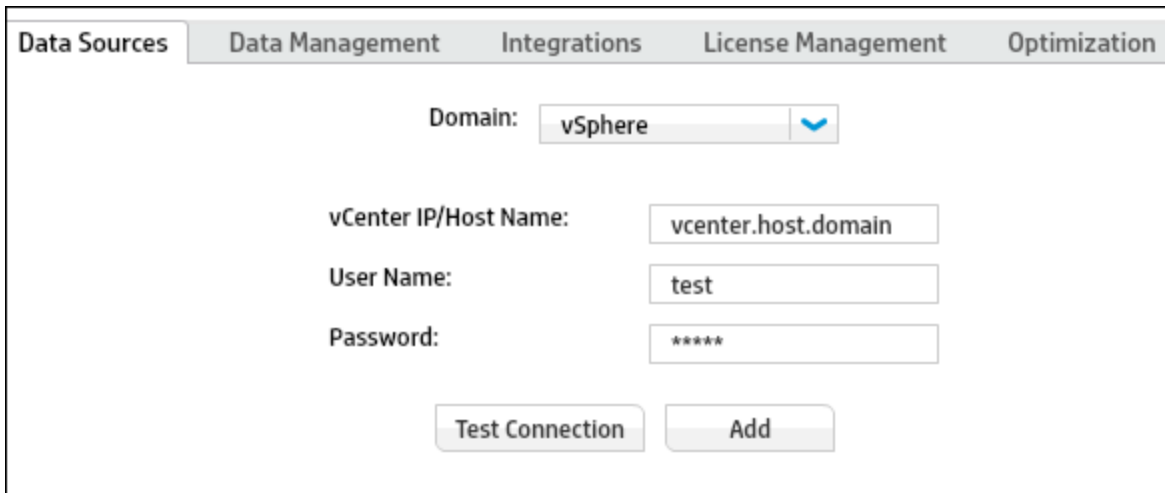
Note: If you access HP vPV using the HTTP protocol (**http://<system_name>:<port_number>/PV**), you are automatically redirected to the secure HP vPV URL (**https://<system_name>:<port_number>/PV**).

HP vPV Interface appears as:



Adding Data Sources


When accessing HP vPV interface for the first time after installation, **Data Sources** tab in the **Admin** page opens. Provide the details of the data sources that HP vPV must monitor.



The screenshot shows the 'Data Sources' configuration page in the HP vPV Admin interface. The page has a navigation bar with tabs: 'Data Sources', 'Data Management', 'Integrations', 'License Management', and 'Optimization'. The 'Data Sources' tab is selected. Below the navigation bar, there is a 'Domain:' label followed by a dropdown menu showing 'vSphere'. Below that, there are three text input fields: 'vCenter IP/Host Name:' with the value 'vcenter.host.domain', 'User Name:' with the value 'test', and 'Password:' with the value '*****'. At the bottom of the form, there are two buttons: 'Test Connection' and 'Add'.

HP vPV supports the following data sources:

- VMware vCenter
- Microsoft Hyper-V
- KVM
- Xen
- OpenStack

For more information on adding data sources, open the **Data Sources** tab on the **Admin** page and click  - **Help** or see *Virtualization Performance Viewer Online Help*. This opens the context-sensitive help for the Data Sources tab.

Chapter 4: Licensing

The following types of licenses are available for HP vPV:

- **Community:** The product is free for you to use but certain features are restricted.
- **Evaluation:** You can use the evaluation version of the product, without any feature restrictions, for a period of 60 days. During this period, you can evaluate the product and if required upgrade to the permanent licensed version of the product. For more information on the features available with this license, go to <http://www.hp.com/go/vpv>.
- **Express:** You can use the product but certain features are restricted. The license is valid for a defined subscription period. The validity starts on a date as per the order placed by the subscriber and the capacity value is decided based on the subscription.
- **Premium:** You can use all the product features without any restrictions. Premium license is valid for a defined subscription period. The validity starts on a date as per the order placed by the subscriber and the capacity value is decided based on the subscription.

Types of Licenses

The following table lists the available features for the Community, Express, Premium, and Evaluation HP vPV Licenses:

Feature	Community License	Express License	Premium License	Evaluation License
Number of Instances	25 instances	6000 Tested up to 6000 instance. Larger configurations can be supported. For more information, see the HP vPV Sizing Guide.		
Data Retention	Up to 24 hours	90 days	90 days	60 days
Enterprise Directory Integration	No	Yes	Yes	Yes
Reports	Yes	Yes	Yes	Yes
HP OM, HP PM and HP BSM Integration	No	Yes	Yes	Yes
HP CSA Integration	No	No	Yes	Yes
Business Grouping	No	No	Yes	Yes

Feature	Community License	Express License	Premium License	Evaluation License
HP OneView Integration	No	No	Yes	Yes
Monitoring Physical Servers	No	No	Yes	Yes
Guest Operating System drill down for advanced troubleshooting	No	No	Yes	Yes
Current Capacity Reports (Only for VMware™ vSphere and Microsoft™ HyperV)	No	No	Yes	Yes
Best-fit Capacity Optimization (Only for VMware™ vSphere and Microsoft™ HyperV)	No	No	Yes	Yes
Virtual Machine Placement (Only for VMware™ vSphere)	No	No	Yes	Yes
Capacity Demand Forecast (Only for VMware™ vSphere and Microsoft™ HyperV)	No	No	Yes	Yes
Alerting (Only for VMware™ vSphere)	No	Yes	Yes	Yes
Capacity Modeler (Only for VMware™ vSphere)	No	No	Yes	Yes
Dashboard	No	No	Yes	Yes

Activating the Evaluation License

To activate the evaluation license, follow these steps:

1. Go to the **License Management** tab in the **Admin** page.
2. Click **Start Evaluation**. The evaluation license is activated.

Note: The evaluation license expires after 60 days and the community license is activated. All product features are available for the Evaluation License. The only difference between the Evaluation License and Premium License is the validity. For more information on licensing, see *License Management* section in *Virtualization Performance Viewer Installation Guide*.

Chapter 5: Troubleshooting

The following section details how to troubleshoot HP vPV:

Vertica database is filled to near capacity due to the increase in the log file size.

Symptom	The Vertica database is filled to near capacity due to the increase in the log file size.
Causes	Vertica database consolidates and retains the log data in a .gz file daily. By default, this process (called 'rotate') continues for 52 weeks.
Resolution	<p>To create more space on the Vertica database implement any one of the two solutions below:</p> <p>Solution 1</p> <ol style="list-style-type: none">1. Go to /opt/vertica/config/logrotate/.2. Open the pv file.3. In the pv file, under # and keep for 52 weeks change the value of rotate from 52 to the number of weeks for which you want to save the rotated log files. <p>For example: rotate 3</p> <p>In this instance, the Vertica database will retain the .gz files for 3 weeks.</p> <ol style="list-style-type: none">4. Repeat step 3 for all instances of # and keep for 52 weeks.5. Save and close the file. <p>Solution 2</p> <ol style="list-style-type: none">1. Login as a root user.2. Run the following commands on the HP vPV server: <pre>cd /opt/vertica/bin ./admintools -t logrotate -d pv -r weekly -k <number_of_weeks></pre> <p>where, <i><number_of_weeks></i> is the number of weeks for which you want to retain the rotated logs.</p>

Unable to Access HP vPV

Symptom	Unable to access HP vPV through the default network port settings.
---------	--

Causes	<ul style="list-style-type: none"> Your system has ovTomcatB configured to run with the non-root user or non-local system account privileges and you have HP vPV installed on such a system. You cannot access HP vPV using the default http (8081) or https (8444) ports if these ports are in use by other applications.
Resolution	<ul style="list-style-type: none"> Check if ovTomcatB is configured to run with the non-root user or non-local system account privileges. If so, modify the settings to run ovTomcatB with the Administrator or root user privileges. Try accessing HP vPV by using the following URL: <code>http://<IP address/system name>:<port number>/PV</code> where, <i><IP address/system name></i> is the IP address or the system name of the HP vPV server and <i><port number></i> is the port number of the HP vPV server. If the HP vPV Home page does not appear, check if the default ports are in use. To change the port settings, follow these steps: <ol style="list-style-type: none"> Run the following command at the command prompt to change the port numbers for HTTP, HTTPS, and Shutdown Ports: <code><bin_dir>ovconfchg -ns NONOV.TomcatB -set HTTPPort <port number></code> <code><bin_dir>ovconfchg -ns NONOV.TomcatB -set HTTPSPort <port number></code> <code><bin_dir>ovconfchg -ns NONOV.TomcatB -set ShutdownPort <port number></code> Restart HP vPV.

Unable to connect to HP vPV server through HTTPS protocol

Symptom	HP vPV is unable to connect to the server through secure communication (HTTPS) protocol.
Cause	The connection times out when HP vPV is not able to connect through the secure client in the default timeout interval of one second.
Resolution	Use the parameter SECURE_CLIENT_CONNECT_TIMEOUT to adjust the timeout interval to connect to HP vPV server depending on your Internet connectivity or infrastructure setup.

Deployment of HP vPV fails

Symptom	The deployment of the HP vPV Virtual Appliance fails.
Cause	This may happen when the time on the ESX server is set to a future time.
Resolution	Ensure that the time on the ESX server is set correctly.

Unable to view content on HP vPV home page

Symptom	The HP vPV Home page does not display anything except the header.
Cause	JavaScript is not supported or Adobe® Flash Player is not installed in your browser. Adobe® Flash Player version 10.3 is the minimum required version.
Resolution	<p>Install Adobe® Flash Player and enable JavaScript support for the Internet Explorer (IE) or Mozilla Firefox browser by adding HP vPV to your list of Trusted Sites.</p> <ul style="list-style-type: none">• To add HP vPV Web server URL to a trusted site, perform the following steps: For IE browser<ol style="list-style-type: none">a. From the Tools menu, click Internet Options. The Internet Options pop-up window appears.b. Click Security tab.c. Select the Trusted Sites icon.d. Click Sites. The Trusted Sites pop-up window appears.e. Type the HP vPV web server URL and click Add. The typed URL appears in the list of trusted sites.f. Click Close.g. Click OK.h. Restart the browser. For Mozilla Firefox browser<ol style="list-style-type: none">a. From the Edit menu, click Preferences. The Options pop-up window appears.b. Click Privacy tab.c. Click Exceptions.d. Type the HP vPV web server URL in the box under Address of web site.e. Click Allow.f. Click Close.g. Click OK.h. Restart the browser.

	<ul style="list-style-type: none"> • If Adobe® Flash Player is not installed in your browser, HP vPV Home page does not appear. The browser displays a message stating that you must Install Adobe Flash Player to view the HP vPV Home Page. Click the message to download Adobe® Flash Player. • If JavaScript is not enabled in your browser, HP vPV Home page does not appear in the IE browser even after adding it as a trusted site. The browser displays a message stating that JavaScript is not enabled in your browser and you must enable JavaScript to view the page. <p>To enable JavaScript support, perform the following steps:</p> <p>For IE browser:</p> <ol style="list-style-type: none"> a. From the Tools menu, click Internet Options. The Internet Options pop-up window appears. b. Click the Security tab. Check if the security level in your browser settings is set to High. c. Make sure the Trusted Sites icon is selected and click Custom Level. The Security Settings pop-up window appears. d. Scroll down to Scripting section and select the Enabled option under Active Scripting. e. Click OK. f. Click Apply. <p>For Mozilla Firefox browser:</p> <ol style="list-style-type: none"> a. From the Tools menu, click Options. b. Click Content. c. Select the Enable JavaScript check box. d. Click OK.
--	---

HTTP Status 404 - /PV Error

Symptom	When trying to access HP vPV, you get the HTTP Status 404 - /PV Error message.
Cause	The message appears if the <INSTALLDIR>/www/webapps/PV directory is empty.
Resolution	Extract the Perf.war file again from <Install_Dir>/newconfig/PV to <Install_dir>/www/webapps/PV. Run the command <i>pv deploywar</i> .

What are the log files available with HP vPV?

The following table lists the log files available with HP vPV:

Component	Description	Location
pvcd (PV Collection Daemon)	<p>pvcd daemon uses XPL tracing mechanism. A default pvcdXPL.itc (trace configuration) is available in /opt/OV/support directory.</p> <p>To start the tracing, run /opt/OV/support/ovtrccfg -app pvcd -cf /opt/OV/newconfig/conf/xpl/trc/pvcdXPL.itc The XPL trace files are present at /tmp/pvcd_*.trc.</p> <p>To stop tracing, run /opt/OV/support/ovtrccfg -app pvcd -off</p>	<p>If tracing is enabled, /tmp/ directory contains the trace files (use - ls /tmp/pvcd_*.trc)</p>
	<p>pvcd and pvconfig tools log important status and error messages, if any, in System.txt.</p>	<p>/var/opt/OV/log/System.txt</p>
Collectors	<p>vCenter and OpenStack collector status log file /var/opt/OV/log/status.virtserver</p>	<p>/var/opt/OV/log/status.virtserver</p>
	<p>KVM collector status log file</p>	<p>/var/opt/OV/log/status.kvm</p>
	<p>XEN collector status log file</p>	<p>/var/opt/OV/log/tmp/status.xen</p>
Database Transaction	<p>Vertica catalog file to view database transactions</p>	<p>/var/opt/OV/databases/pv/catalog/pv/v_pv_node0001_catalog/vertica.log</p>
User Interface	<p>Local trace and log messages are logged in ovpmtrace.0.txt and ovpm.0.log</p>	<p>/var/opt/OV/log</p>

Chapter 6: HP vPV Community

You can get HP vPV related information from the HP vPV Community through the following:

HP vPV Blogs

You can get more information and use cases for HP vPV in [HP vPV Blog](#)

HP vPV Videos

You can view HP vPV demonstration videos and tutorials in [HP vPV Videos](#).

HP vPV Community Forum

You can access the HP vPV community forum to get help and ask any questions that you may have. You can address any queries regarding HP vPV in the [HP vPV forum](#).

Send Documentation Feedback

If you have comments about this document, you can [contact the documentation team](#) by email. If an email client is configured on this system, click the link above and an email window opens with the following information in the subject line:

Feedback on Getting Started Guide for Virtual Appliance (Virtualization Performance Viewer 2.10)

Just add your feedback to the email and click send.

If no email client is available, copy the information above to a new message in a web mail client, and send your feedback to docfeedback@hp.com.

We appreciate your feedback!