

HP Server Automation

Ultimate Edition

Software Version: 10.20

User Guide: Storage Visibility and Automation

Document Release Date: December 12, 2014

Software Release Date: December 12, 2014



Legal Notices

Warranty

The only warranties for HP products and services are set forth in the express warranty statements accompanying such products and services. Nothing herein should be construed as constituting an additional warranty. HP shall not be liable for technical or editorial errors or omissions contained herein.

The information contained herein is subject to change without notice.

Restricted Rights Legend

Confidential computer software. Valid license from HP required for possession, use or copying. Consistent with FAR 12.211 and 12.212, Commercial Computer Software, Computer Software Documentation, and Technical Data for Commercial Items are licensed to the U.S. Government under vendor's standard commercial license.

Copyright Notices

© Copyright 2001-2014 Hewlett-Packard Development Company, L.P.

Trademark Notices

Adobe® is a trademark of Adobe Systems Incorporated.

Intel® and Itanium® are trademarks of Intel Corporation in the U.S. and other countries.

Microsoft®, Windows®, Windows® XP are U.S. registered trademarks of Microsoft Corporation.

Oracle and Java are registered trademarks of Oracle and/or its affiliates.

UNIX® is a registered trademark of The Open Group.

Support

Visit the HP Software Support Online website at:

<http://www.hp.com/go/hpsoftwaresupport>

This website provides contact information and details about the products, services, and support that HP Software offers.

HP Software online support provides customer self-solve capabilities. It provides a fast and efficient way to access interactive technical support tools needed to manage your business. As a valued support customer, you can benefit by using the support website to:

- Search for knowledge documents of interest
- Submit and track support cases and enhancement requests
- Download software patches
- Manage support contracts
- Look up HP support contacts
- Review information about available services
- Enter into discussions with other software customers
- Research and register for software training

Most of the support areas require that you register as an HP Passport user and sign in. Many also require a support contract. To register for an HP Passport ID, go to:

<http://h20229.www2.hp.com/passport-registration.html>

To find more information about access levels, go to:

http://h20230.www2.hp.com/new_access_levels.jsp

Support Matrices

For complete support and compatibility information, see the support matrix for the relevant product release. All support matrices and product manuals are available here on the HP Software Support Online website:

http://h20230.www2.hp.com/sc/support_matrices.jsp

You can also download the *HP Server Automation Support and Compatibility Matrix* for this release from the HP Software Support Online Product Manuals website:

<http://h20230.www2.hp.com/selfsolve/manuals>

Documentation Updates

All the latest Server Automation product documentation for this release is available from the SA Documentation Library:

http://support.openview.hp.com/selfsolve/document/KM00417675/binary/SA_10_docLibrary.html

Use the SA Documentation Library to access any of the guides, release notes, support matrices, and white papers relevant to this release or to download the full documentation set as a bundle. The SA Documentation Library is updated in each release and whenever the release notes are updated or a new white paper is introduced.

How to Find Information Resources

You can access the information resources for Server Automation using any of the following methods:

Method 1: Access the latest individual documents by title and version with the new SA Documentation Library

Method 2: Use the complete documentation set in a local directory with All Manuals Downloads

Method 3: Search for any HP product document in any supported release on the HP Software Documentation Portal

To access individual documents:

1 Go to the SA 10.x Documentation Library:

http://support.openview.hp.com/selfsolve/document/KM00417675/binary/SA_10_docLibrary.html

2 Log in using your HP Passport credentials.

3 Locate the document title and version that you want, and then click **go**.

To use the complete documentation set in a local directory:

1 To download the complete documentation set to a local directory:

a Go to the SA Documentation Library:

http://support.openview.hp.com/selfsolve/document/KM00417675/binary/SA_10_docLibrary.html

b Log in using your HP Passport credentials.

- c Locate the All Manuals Download title for the SA 10.1 version.
 - d Click the **go** link to download the ZIP file to a local directory.
 - e Unzip the file.
- 2 To locate a document in the local directory, use the Documentation Catalog (docCatalog.html), which provides an indexed portal to the downloaded documents in your local directory.
- 3 To search for a keyword across all documents in the documentation set:
 - a Open any PDF document in the local directory.
 - b Select **Edit > Advanced Search** (or Shift+Ctrl_F).
 - c Select the All PDF Documents option and browse for the local directory.
 - d Enter your keyword and click Search.

To find additional documents on the HP Software Documentation Portal:

Go to the HP Software Documentation Portal:

<http://h20230.www2.hp.com/selfsolve/manuals>

This site requires that you register for an HP Passport and sign in. To register for an HP Passport ID, click the **New users - please register** link on the HP Passport login page.

You will also receive updated or new editions if you subscribe to the appropriate product support service. Contact your HP sales representative for details. See Documentation Change Notes for a list of any revisions.

Product Editions

There are two editions of Server Automation:

- Server Automation (SA) is the Ultimate Edition of Server Automation. For information about Server Automation, see the SA Release Notes and the SA User Guide: Server Automation.
- Server Automation Virtual Appliance (SAVA) is the Premium Edition of Server Automation. For more information about what SAVA includes, see the SAVA Release Notes and the SAVA at a Glance Guide.

Contents

- 1 **Asset Discovery**13
 - Overview of Asset Discovery13
 - Data Collection13
 - Storage Scanners14
 - SE Connector Updates.....15
 - Update from Storage Essentials.....17
 - Open with Storage Essentials (Click & Launch)18
 - Storage Device19
 - Storage Host Agent Extension (SHA)19
 - Server Assets20
 - Storage Topology22
 - Scheduling Server Asset Discovery22
 - Server Storage and SAN Relationships23
 - Frequently Asked Questions24
 - Viewing FCAs Attached to a Server25
 - Viewing Ports and Volumes in an FCA25
 - Viewing Port Connections and Zones26
 - Viewing Storage Summary in a Server26
 - Viewing File Systems Mounted on a Server26
 - Viewing File System Properties26
 - Viewing Volume Details27
 - Viewing Local Disks.....27
 - Viewing the Storage Supply Chain27
 - Viewing Volume Properties.....28
 - Viewing Antecedents and Dependents of Volumes for a Managed Server.....28
 - Viewing Access Paths for a Volume29
 - Viewing Volume Connectivity29
 - Viewing Disks Utilized by a Volume29
 - Viewing Local Disks or DAS Attached to a Server30
 - Viewing Disk Properties30
 - Viewing Volumes Created on a Disk.....30
 - Viewing File Systems Created on a Disk31
 - Viewing Volume Manager, MPIO, ZFS, & ASM.....31
 - Viewing Volumes Available Through Manager Software31
 - Viewing Unmounted Volume Properties.....31
 - Viewing Antecedent of Aggregate Storage Supply Chain.....32
 - Viewing Remote SAN Based Volumes32
 - Viewing Storage Targets33
 - Viewing Access Paths to Storage Targets.....33

Viewing Switches Attached to a Server	33
Viewing Fabrics Attached to a Server	33
Viewing FCA Ports Attached to a Fabric.....	34
Viewing Zone Membership	34
Viewing Databases Hosted by a Server.....	34
Viewing Storage Initiators & Volumes	34
SAN Array Assets	35
SAN Array Assets and Relationships	36
Update from Storage Essentials.....	36
Open with Storage Essentials	36
Frequently Asked Questions	37
Viewing SAN Arrays.....	37
Viewing SAN Arrays and Storage Configurations	38
Viewing Summary of a SAN Array.....	38
Viewing SAN Array Properties.....	38
Viewing Customers for a SAN Array.....	39
Viewing the SAN Array History Log	39
Viewing Storage Initiators Consuming Storage Resources from an Array	40
Viewing Initiator Volumes and Ports	40
Viewing Storage Volumes with Access Paths for Remote Initiators	40
Viewing Attached Fabrics in an Array.....	41
Viewing Fabric Ports and Connectivity in an Array	41
Viewing Zones Configured for an Array.....	41
Viewing SAN Switches Attached to an Array	41
Viewing Hardware Information for a SAN Array.....	42
Viewing Front End Fabric Ports in a SAN Array.....	42
Viewing Properties of the Fabric Port in a SAN Array	42
Viewing Volumes Served by a SAN Array Port	42
Viewing Zones Configured for an Array Port	43
Viewing Storage Summary for a SAN Array	43
Viewing Volumes in a SAN Array.....	43
Viewing Volume Properties	43
Viewing the Connectivity of a Volume	44
Viewing the Composition of a Volume.....	44
Viewing the Access Path from the Volume	44
Viewing Array Ports from the Selected Volume.....	45
Viewing Storage Pools	45
Viewing Storage Pool Properties	45
Viewing Volumes for a Selected Pool	46
Viewing Replication.....	46
Fabric Assets	47
Fabric Assets and Relationships.....	48
NetApp Assets	48
NetApp Assets and Relationships	50
Update from Storage Essentials.....	50
Open with Storage Essentials	50
Frequently Asked Questions	51

Viewing NAS Filers	51
Viewing the NAS Filer Storage Configuration	51
Viewing Summary of a NAS Filer	51
Viewing NAS Filer Properties	52
Viewing Customers for a NAS Filer	52
Viewing the NAS Filer History Log	52
Viewing vFilers	53
Viewing Volumes Configured for a vFiler	53
Viewing Exports for a vFiler	53
Viewing Storage Summary for a NAS Filer	54
Viewing Disks in a NAS Filer	54
Viewing NAS Filer Disk Properties	54
Viewing Filer Volumes Created by a Disk	54
Viewing Aggregates Created by a Disk	55
Viewing Plexes on a Disk	55
Viewing RAID Groups on a Disk	55
Viewing Aggregates Configured in a NAS Filer	55
Viewing Aggregate Properties	56
Viewing Filer Volumes Created by an Aggregate	56
Viewing Antecedents and Dependents of an Aggregate	56
Viewing Plexes Used by an Aggregate	57
Viewing RAID Groups Consumed by an Aggregate	57
Viewing Filer Volumes Configured in a NAS Filer	57
Viewing Filer Volume Properties	57
Viewing Antecedents and Dependents of a Volume for a NAS Filer	58
Viewing Qtrees Created in a Volume	58
Viewing Quota Created at the Volume or Qtree	59
Viewing Exports for a Volume	59
Oracle Database Assets	59
Database Assets and Relationships	60
Frequently Asked Questions	61
Viewing Databases	62
Viewing Database Storage Configurations	63
Viewing Properties of the Oracle Instance	63
Viewing Tablespaces Configured in the Oracle Instance	63
Viewing Tablespace Properties	64
Viewing Tablespace Antecedents and Dependents	64
Viewing Storage Supply Chain Connectivity of the Tablespace	64
Viewing Redo Logs	65
Viewing Redo Log Properties	65
Viewing Redologs Antecedents and Dependents	65
Viewing Redologs Connectivity	66
Viewing Datafiles	66
Viewing Datafile Properties	67
Viewing Datafile Antecedents and Dependents	67
Viewing Datafile Connectivity	67
Viewing Servers Hosting a Database	68

Viewing Utilized Fabrics	68
Viewing Utilized Switches	68
Viewing Utilized Targets	69
Viewing the Database History Log	69
Device Group Assets	70
Static Device Groups	70
Dynamic Device Groups	71
Device History Log	72
2 Storage Compliance	73
Audit Rules, Schedule, and Results	73
Audit Browser	74
Select Server	74
Audit Schedule	75
Audit Summary	75
Storage Compliance Checks	76
3 Storage Visualization	77
Overview of Service Automation Visualizer	77
Storage Mapping Features	77
4 SE Connector	79
SE Connector Updates	80
Viewing the Storage Essentials Connection Status	81
Viewing the SE Client Library Version Number	82
Access Controls	82
Viewing Access Controls for SE Connector	82
Viewing Storage Essentials Servers Managed Elements for SE Connector	83
Update from Storage Essentials	84
Open with Storage Essentials (Click & Launch)	84
5 Storage Search	85
Overview of Storage Search	85
SA Client Integration	85
Storage Objects and Attributes	85
A Global File System (OGFS)	87
Overview of OGFS	87
Global Shell	87
Permissions	88
Storage Directory in the OGFS	88
/opsw/api/com/opsware/storage Directory	89
/opsw/Storage Directory	89
/opsw/Server/.../Storage Directory	91
/opsw/Server/.../Storage/Controller Directory	91
/opsw/.../Disk/Dependent Directory	91
/opsw/.../Server/Storage/Fabric Directory	92
/opsw/Server/.../Storage/FileSystem Directory	93

/opsw/Server/.../Storage/Port Directory	93
/opsw/Server/.../Storage/Service Directory	94
/opsw/Server/.../Storage/Switch Directory	94
/opsw/Server/.../Storage/System Directory	95
/opsw/Server/.../Storage/Volume Directory	95
Index	97

1 Asset Discovery

Overview of Asset Discovery

Storage Visibility and Automation collects storage information from Storage Essentials (SE) discovery and enables storage information in SA (SA).

- Host server storage information is discovered by the Storage Host Agent Extension in Storage Visibility and Automation—and not by SE discovery.
- Database storage information is discovered by a Storage Scanner in Storage Visibility and Automation—and not by SE discovery.

SE discovers information about the SAN arrays, switches, fabrics, and NetApp filers in your environment. SA obtains information about these storage assets from SE. Storage assets that are enabled in SA include SAN arrays, fabrics, controllers, and zones. Storage Visibility and Automation also provides information about connectivity, such as the relationship of a switch and a managed server. Edge information is also provided; however, not all fabric switches are displayed.

- [Data Collection](#)
- [Server Assets](#)
- [SAN Array Assets](#)
- [Fabric Assets](#)
- [Oracle Database Assets](#)

Data Collection

Storage information is discovered in SE and then collected by Storage Scanners in Storage Visibility and Automation.

Information about storage arrays, switches, fabrics, and NetApp filers in your environment is collected by a component in SA called *SE Connector*. SE Connector retrieves data about the SAN infrastructure from SE. This storage data is transferred to the SA core and stored in the Model Repository. See [SE Connector](#) on page 14 for more information.

Information about Oracle storage configurations in a SAN or Network Attached Storage (NAS) is collected by a component in Storage Visibility and Automation called the *Database Scanner for Oracle*. This Storage Scanner retrieves data about Oracle instance, tablespaces, and datafiles. See [Database Scanner for Oracle](#) on page 17 for more information.

Storage Scanners

There are two types of Storage Scanners that collect storage data:

- [SE Connector](#)
- [Database Scanner for Oracle](#)

SE Connector



Storage Essentials (SE) version 6.1.1 or later and Server Automation 7.80 or later are required to configure and deploy SE Connector. SE is required to view, report, or perform any Service Automation Visualizer (SAV) and Service Automation Reporter (SAR) operation on SAN objects, such as arrays, switches, volumes, and so on. SAN objects are discovered in Storage Essentials. To enable discovered SAN objects in the SA, SAV, and SAR products, the Server Automation SE Connector component must be installed and configured. See the *HP Server Automation: Storage Visibility and Automation Installation & Administration Guide* for information about configuring and deploying SE Connector.

SE Connector collects data from Storage Essentials (SE) about SAN elements and inventory, and their connectivity. These SAN elements include storage arrays, fabrics, switches, and NAS filers.



In the user interface, SE Connector is referred to as *SE Storage Scanner*.

The frequency of collecting this storage data is configured by the user. By default, SE Connector collects SAN information from SE once every 12 hours. This action is commonly known as *a scheduled full synchronization*. You can adjust the collection frequency by modifying a setting in SE. In SE Connector, you can specify the maximum wait time (in minutes) for a scheduled full synchronization when the Get All Elements Detail (GAED) process in SE is in progress. The following property specifies the maximum default wait time for a scheduled full synchronization task when GAED is in progress:

```
com.creeppath.agent.common.devices.scheduled.full.sync.max.wait.minutes=10080
```

A “GAED IN PROGRESS” value in the Status column on the Storage Scanner Storage Essentials panel indicates that a Get All Elements Details (GAED) discovery process is currently running on the Storage Essentials server.

When Storage Essentials is processing GAED, by default SE Connector will wait 10080 minutes (7 days) before it will proceed to collect data from Storage Essentials, even though a GAED discovery process is still running. SE Connector will check SE every 3 minutes (by default) and will run the collection if the SE GAED process finishes sooner or the SE Connector has waited longer than the interval configured for “Full Data Collection Minutes” in SEPlugin.Properties.

Check the Storage Essentials (connection) Status to determine whether the GAED process is still running. Check the Last Scan timestamp for Managed Elements for that Storage Essentials instance to determine when SE Connector last updated the information for those elements.

The following property specifies the maximum default wait time for a scheduled full data collection task when GAED is in progress:

```
com.creeppath.agent.common.devices.full.data.collection.minutes=720
```

The following describes a typical use case:

- You configure SE Connector to collect information from Storage Essentials once a day.
- Storage Essentials is busy processing GAED for 2 days.
- You do not see updated information for Managed Elements for the Storage Essentials instance in Server Automation.

- You can use a combination of the Storage Essentials connection Status value and Last Scan timestamp for Managed Elements to determine if there is a lengthy GAED process running for SE and the SE Connector is not updating information for those Managed Elements. This explains why information for Managed Elements is not getting updated as per the scheduled frequency.

Attaching and Remediating the SE Storage Scanner and SE Connector Update Policies

This section describes the steps to follow when you attach and remediate the SE Storage Scanner and SE Connector Update policies.

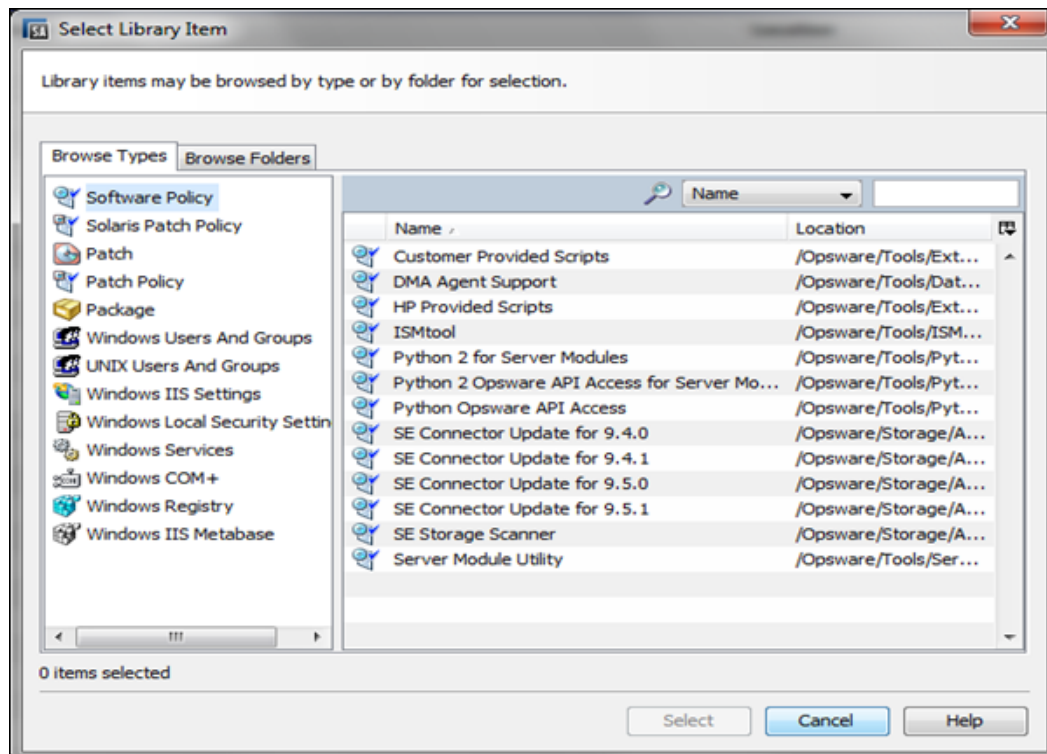
To attach and remediate:

- 1 Attach the software policy SE Storage Scanner to the managed server
- 2 Remediate the server.
- 3 If your HP Storage Essentials management server is version 6.1.1, you do not need to follow any more steps.
- 4 If the HP Storage Essentials management server is version 6.2 or later, attach the software policy SE Connector Update for your version to the managed server.

► **Note:** The version of the SE Connector Update must be compatible with the version of the Storage Essentials server, which means that the version numbers of the SE Connector Update libraries must be the same as the version of the Storage Essentials. For example, if you have SE 6.2, installed, you will have to install the SE Storage Scanner first, then install the SE Connector Update for 6.2.

SE Connector Updates

This section discusses SE Connector updates.



SA 10.0 supports the following SE versions: SE 9.4.0, SE 9.4.1, SE 9.5.0 and SE 9.5.1.



Note: The SA 10.0 release no longer supports SE 6.x for new managed servers. However, SA 6.x is still supported for existing managed servers.

Viewing the Storage Essentials Connection Status

To view the status of the connection to the Storage Essentials server that is managed by the Storage Scanner:

- 1 From the navigation pane, select **Administration > Storage Scanners**.
- 2 In the content pane, select an SE Storage Scanner and then open its browser.
- 3 From the Views pane, select **Storage Essentials**. Check the Status column.

Multiple Storage Essentials Instances

SE Connector can communicate with multiple Storage Essentials instances.



For scalability and performance reasons, it is recommended that you have *multiple* SE Connectors communicating with *one* instance of Storage Essentials. You can also have *multiple* SE Connectors communicating with *multiple* instances Storage Essentials.



When you have *multiple* SE Connectors communicating with *one* instance of Storage Essentials, each access control must be configured to collect a unique set of devices from the same Storage Essentials instance. See the *HP Server Automation: Storage Visibility and Automation Installation & Administration Guide* for information about modifying access controls.

Since, by default, storage information is collected from SE once every 12 hours, you might need updated data more frequently than twice a day. You can modify this data collection frequency by modifying a setting in SE. See the *Storage Essentials SRM Software User Guide* for information about configuring the schedule for data collection. You can also request an update of SAN information from SE at the storage device level, such as arrays and NetApp filers. See [Update from Storage Essentials](#) on page 17 for more information.

When you are viewing storage information about a SAN array or NetApp filer in Storage Visibility and Automation and would also like to view storage information for the same SAN array or NetApp filer in Storage Essentials, you can launch Storage Essentials to display the data that was discovered. See [Open with Storage Essentials \(Click & Launch\)](#) on page 18 for more information.

Viewing the SA Client Library Version Number

The Storage Scanner properties panel includes the SE Client Library Version number. The SE Client Library version number, such as 6.x.x.xx, is displayed in the Description field.

To view the SA Client Library version number:

- 1 From the navigation pane, select Administration > Storage Scanners.
- 2 In the content pane, select an SE Storage Scanner.
- 3 From the View drop-down list, select Properties. The SE Client Library Version number is displayed in the Description field.

Database Scanner for Oracle

The Database Scanner for Oracle collects data about Oracle storage configurations in a SAN or Network Attached Storage (NAS), such as the Oracle instance, tablespaces, and datafiles.

Storage elements configured for an Oracle instance can be classified as *physical database storage* and *logical database storage*:

- **Physical database storage** includes datafiles and redo logs that directly consume system storage resources (filesystems or partitions) or are built on top of ASM Files.
- **Logical database storage** includes entities such as tablespaces that are created inside the instance consuming different physical and logical storage entities.

This Storage Scanner identifies relationships between the database elements and other storage assets as described in [Table 1](#).

table 1 Database Assets & SAN Relationships

Database Asset	External Storage Asset	Dependency	Description
SAN-based physical database storage	Server assets SAN array assets Fabric assets NetApp assets	Block storage dependency	Provides the dependency chain between the database storage elements and SAN arrays through system (server) resources and fabrics.
NAS-based physical database storage	Server assets NetApp assets	NAS storage dependency	Provides the dependency chain between the database storage elements, server resources, and NetApp.

See the *HP Server Automation: Storage Visibility and Automation Installation & Administration Guide* for information about how to configure and deploy the Database Scanner for Oracle.

- [Update from Storage Essentials](#)
- [Open with Storage Essentials \(Click & Launch\)](#)
- [Storage Device](#)
- [Storage Host Agent Extension \(SHA\)](#)
- [Server Assets](#)
- [SAN Array Assets](#)
- [Fabric Assets](#)

Update from Storage Essentials



You must have the required SA user permissions to request an “Update from Storage Essentials”. See the *HP Server Automation: Storage Visibility and Automation Installation & Administration Guide* for more information.

“Update from Storage Essentials” is an option in the Actions menu that requests an update of storage information about an individual storage device, such as a SAN array or NetApp filer. SE Connector provides this synchronization of data for a storage system when you request an update at the device level.

SE Connector does not directly communicate with a storage device to collect data about it. SE Connector collects data about an individual storage device from Storage Essentials. This request copies data from the SE repository into the Model Repository.

You can specify the maximum wait time (in minutes) for the “Update from Storage Essentials” action in SE Connector while SE performs GAED for certain storage elements. The following property specifies the maximum default wait time for the “Update From Storage Essentials” action when GAED is in progress:

```
com.creeppath.agent.common.devices.manual.full.sync.max.wait.minutes=10080
```

The Jobs and Sessions user interface displays the status of the update request. A “Success” status indicates that the Model Repository has been updated. The timestamp for the job also provides the following information about the “Update from Storage Essentials” request:

- When the request was made
- What the status of the update job is, such as:
 - **Succeeded**—Request was submitted successfully. SE Connector collected the data for the requested device and sent it to the Web Services Data Access Engine.
 - **Error**—Request could not be submitted. Verify that the SE Connector is running and start it if it is stopped. If there is still a problem, check the SE Connector logs on the managed server to troubleshoot this error. Begin with the `pam-0-0.trace` log file and then check other trace files.

See the *SA User Guide: Server Automation* for more information about Jobs and Sessions.

- [Storage Scanners](#)
- [Open with Storage Essentials \(Click & Launch\)](#)
- [SAN Array Assets](#)

Open with Storage Essentials (Click & Launch)

“Open with Storage Essentials” is an option in the Actions menu that launches Storage Essentials for an individual storage device, such as a SAN array or NetApp filer. You can also launch Storage Essentials for a device by selecting it and then by right-clicking—this is commonly referred to as the *Click & Launch* user interface.

SE Connector supports Click & Launch for storage devices that are managed by Storage Essentials standalone configuration. This option is not supported with Storage Essentials integrated with HP Systems Insight Manager.

Click & Launch requires an SE account login. When you select other storage objects and then Click & Launch from them (while in the same session), the initial SE login will persist. There is no single sign-on capability for HP Server Automation and Storage Essentials.

You can launch SE only from a storage device. You cannot launch SE from a host.

- [Storage Scanners](#)
- [Update from Storage Essentials](#)
- [SAN Array Assets](#)

Storage Device

A storage device in the Storage Visibility and Automation model is an entity that represents the volumes, extents, and other things in the real world that contain the actual bits and bytes. A storage device can be any block storage device that has a capacity measured in bytes, such as physical disks, partitions, and database tablespaces.

There are two types of storage devices:

- A **logical volume** is a block storage extent, such as partition, database tablespace, and remote initiator volume.
- A **physical disk** is a physical storage device that provides the raw storage for a storage system, such as storage array disks or spindles.

Deleting a Storage Device

This action only removes a storage device (SAN array, NAS filer, and database) from the Model Repository.

To remove a storage device from the Model Repository:

- 1 In the navigation pane, select **Devices > Storage** and then select a device type, such as **SAN Arrays** or **NAS Filers**.

Or

In the navigation pane, select, **Library > Databases**.

- 2 In the content pane, select a device. You can also select more than one device.
- 3 From the Actions menu, select Delete.
- 4 In the Delete dialog box, click **Delete** to remove the device from the Model Repository.
 - [Server Assets](#)
 - [SAN Array Assets](#)
 - [Fabric Assets](#)
 - [Oracle Database Assets](#)
 - [Deleting a Storage Device](#)

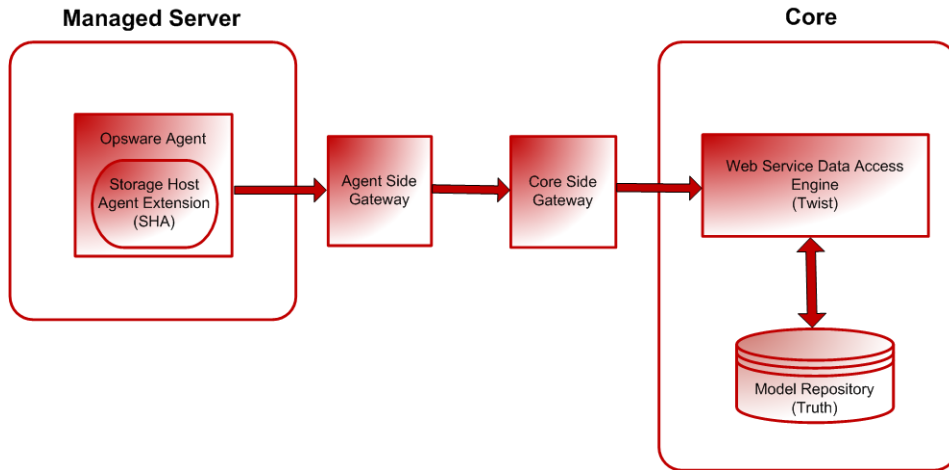
Storage Host Agent Extension (SHA)

A Storage Host Agent Extension (SHA) runs on a managed server to discover storage related data on that managed server, such as Fibre Channel Adapter (FCA) hardware and drivers, filesystem mounts, and so on.

SHA is not an agent. SHA is a C++/Python module that can be executed by scheduled jobs. This module runs on managed servers and produces XML output that is sent back to the SA core. This data (XML output) persists in the Model Repository from where it is then retrieved and displayed in the user interface.

Figure 1 shows the end-to-end process of the SHA that captures storage-related data on a managed server.

figure 1 SHA on a Managed Server



- [Server Assets](#)
- [SAN Array Assets](#)
- [Fabric Assets](#)

Server Assets

This feature provides visibility into the storage configuration in a managed server attached to the Storage Area Network (SAN) or Network Attached Storage (NAS). These configurations can help you understand the dependency on SAN and NAS elements.

Storage elements in a server (server assets) include logical entities, such as volumes and physical hardware. This feature allows you to view and evaluate storage-related information for a managed server, such as FCAs and FCA drivers, volume mounts, volume manager information, and so on.

The discovery of server storage elements is enabled by processes that periodically query the managed server and then push the data to the core.

- ▶ Storage Visibility and Automation displays server storage assets after the hardware registration process is successfully completed. Hardware registration typically occurs within the first 24 hours of the SE Connector deployment. See the *SA User Guide: Server Automation* for information about how to initiate the hardware registration process as needed.

You can define the job schedule for capturing storage data. See [Scheduling Server Asset Discovery](#) on page 22.

With this feature, a server administrator can view:




- Storage-related information in each managed server, such as FCAs and FCA drivers, volume mounts, volume manager information, and so on
- Unmounted storage resources that the SAN is making available to the host
- Aggregate information on storage elements (such as volumes used) that are associated with an application in a server

This feature also provides quick navigation to downstream physical or logical storage elements associated with an application or a single managed server. At any level in the storage supply chain, you can drill down to the associated storage entities to view:

- **Physical entities**—fibre switches, filers, disks, and so on
- **Logical entities**—zones, LUNs, and so on

From these entities, you can drill down or drill up to see storage resources that are shared between two or more selected applications or managed servers.

Storage Visibility and Automation captures the following server assets:

- **Fibre Channel Adapter (FCA)**  —Storage information on the active Fibre Channel Adapter (FCA). In the storage industry, FCA also applies to the hardware interface that uses non-Fabric Channel protocol. Storage Visibility and Automation discovers the Manufacturer, Model, Serial Number, Software Driver Version, Software Firmware Version, and Physical Hardware Version for an FCA.
- **Fibre Channel Adapter Port**  —The port on the FCA to provide access to the outside world— storage information on the active Fibre Channel Port World Wide Name (WWN). See [Fabric Assets](#) on page 47 for information about storage in the connectivity of an FCA Port and an FC Switch Port.
- **Base Volumes**—Basic raw storage capacity (primordial storage). This raw storage may be virtualized and consumed in the layers above (Volume Managers, File Systems). These storage elements include local storage (Root Volumes) based disks, and Direct Attached Storage (DAS).
- **Root Volumes (Local and DAS)**—Storage exposed through disks that are local and are based on DAS as logical Root Volume. Hardware information of the spindles or disk controllers is not captured.
- **Multipath IO (MPIO)**—Information on the MPIO software and all of the Fibre Channel protocol based storage access paths to remote storage volumes. This information includes access path information for each of the LUN bounded to the server. For each path, Storage Visibility and Automation captures the following information:
 - State of the path—active or passive
 - Is Preferred Path
 - FCA Port consumed for each of the path
- **Volume Manager (Logical Volume Manager/Logical Disk Manager)**—Native and third party Volume Manager Software information. This includes information on all aspects of storage, such as capacity and storage layout, that are consumed and produced by the Volume Manager. Storage Visibility and Automation does not provide detailed information on internals of the Volume Manager. However, for each of the volumes produced by the Volume Manager, Storage Visibility and Automation provides dependencies on primordial storage, such as dependency chain that includes consumed storage. SE does not support layered volume managers and layered volumes.
- **Consumed Storage**—Storage that is directly consumed by the Volume Manager from the server primordial storage. SE discovers storage capacity if the applicable volume group (Disk Group) is the source of the consumable storage (server level primordial storage only). Storage Visibility and Automation also captures storage consumed by a volume manager, which consumes external storage. Not all storage resources are virtualized to create volume manager volumes.
- **Produced Storage**—Storage capacity when the applicable volume group (Disk Group) is the type (SIMPLE, RAID5, and so on) for the produced storage (volumes). Produced storage consists of storage units created by a hosted service, such as file systems, volume managers, and databases.
- **File Systems**  —Consumers of the produced storage. This functionality includes capturing the file systems that are based on primordial storage and storage offered by volume manager volumes. Storage Visibility and Automation discovers Block Driver, Cluster Size, Is Remote, File System Size, File

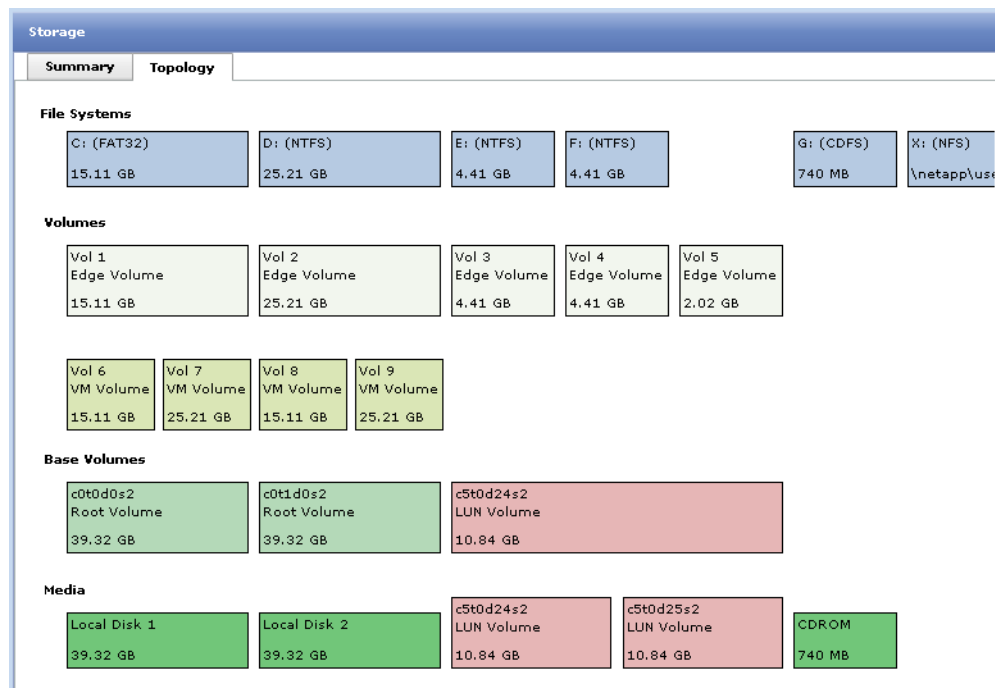
System Type (nfs, ufs, vxfs, hfs, ext2, ext3, ntfs, and so on), Mount Point, and Root and Storage capacity information. Storage Visibility and Automation also discovers the dependency chain for the File System based on NetApp. See on page 48 for more information. For this release, Storage Visibility and Automation does not support distributed filesystem.

- [Scheduling Server Asset Discovery](#)

Storage Topology

Figure 2 shows how storage builds up from physical disks to volumes, through volume managers, to a file system.

figure 2 Storage Layers



Layer 4 shows the physical disks and the LUNs attached to the server. The physical disks are the local disks to the server and the LUNs are the logical units from an external storage systems (Network attached storage or Storage Attached Network).

Layer 3 shows the physical partitions, which are created from one or more physical drives and logical units.

Layer 2 shows the volume groups, which can consist of one or more physical volumes and there can be more than one volume group in the system. These volume groups can be divided into logical volumes of various sizes. A logical volume can span a number of physical volumes in a volume group or represent only part of one physical volume. Logical volumes can contain a file system, swap space or raw data.

Layer 1 shows the file systems that are mounted on the logical volumes.

Scheduling Server Asset Discovery

In Storage Visibility and Automation, the discovery of server storage elements is enabled by processes (jobs) that periodically query the managed server and then push the data to the core. You can define the job schedule for capturing storage data. See the *SA User Guide: Server Automation* for more information about jobs and scheduling them.

Server Storage and SAN Relationships

Storage Visibility and Automation displays relationships between server storage elements and other storage asset discovery features. See [Table 2](#).

table 2 Server Assets and SAN Relationships

Server Asset	External Element	Description
File System	Remote File Systems (only NFS mounted file system dependency)	Captures only NFS-mounted file system dependency information.
FCA Port	Connected FC switch port	The port on the FCA to provide access to the outside world—storage information on the active Fibre Channel Port World Wide Name (WWN).



Storage Visibility and Automation does not include relationships that are local to the discovery of a server storage asset.

- [Frequently Asked Questions](#)

Frequently Asked Questions

Table 3 shows you how to use this documentation to find answers to some frequently asked questions about finding information about server storage elements in a managed server.

table 3 Frequently Asked Questions About Server Assets

	Question	How to Find the Answer
1.	What are the application storage configurations in a managed server?	<ul style="list-style-type: none"> • Viewing File Systems Mounted on a Server on page 26 • Viewing Databases Hosted by a Server on page 34
2.	What is causing application performance degradation? How is all of the server storage configuration impacting the application? What are the shared resources between applications?	<ul style="list-style-type: none"> • Viewing Ports and Volumes in an FCA on page 25 • Viewing Port Connections and Zones on page 26 • Viewing Access Paths to Storage Targets on page 33 • Viewing Fabrics Attached to a Server on page 33 • Viewing Storage Volumes with Access Paths for Remote Initiators on page 40 • Viewing the Access Path from the Volume on page 44
3.	What SAN elements (switches, arrays, and gateways) are applications, through server storage assets, dependent on?	<ul style="list-style-type: none"> • Viewing Antecedents and Dependents of Volumes for a Managed Server on page 28 • Viewing File Systems Mounted on a Server on page 26 • Viewing Volume Details on page 27
4.	What are the storage expansion opportunities for an application and for a managed server?	<ul style="list-style-type: none"> • Viewing Storage Summary in a Server on page 26 • Viewing File Systems Mounted on a Server on page 26 • Viewing Volumes Created on a Disk on page 30
5.	Are critical applications configured for high availability, such as multiple paths?	<ul style="list-style-type: none"> • Viewing Ports and Volumes in an FCA on page 25
6.	What are the unmounted storage resources that the SAN is making available to the managed server?	<ul style="list-style-type: none"> • Viewing the Access Path from the Volume on page 44
7.	What is the aggregate information on storage elements (volumes used) associated with an application in a server?	<ul style="list-style-type: none"> • Viewing Antecedent of Aggregate Storage Supply Chain on page 32

table 3 Frequently Asked Questions About Server Assets (cont'd)

	Question	How to Find the Answer
8.	How do I navigate to downstream physical or logical storage elements associated with an application or a single managed server?	<ul style="list-style-type: none">• Viewing Antecedents and Dependents of Volumes for a Managed Server on page 28
9.	How do I navigate to the associated storage entities at any level in the storage supply chain, such as: <ul style="list-style-type: none">• Physical entities—fibre switches, filers, disks, and so on• Logical entities—zones, LUNs, and so on?	<ul style="list-style-type: none">• Viewing Ports and Volumes in an FCA on page 25• Viewing Port Connections and Zones on page 26
10.	How can I view storage resources that are shared between two or more selected applications or servers?	<ul style="list-style-type: none">• Viewing Storage Volumes with Access Paths for Remote Initiators on page 40• Viewing the NAS Filer Storage Configuration on page 51

Viewing FCAs Attached to a Server

To troubleshoot fibre channel connectivity and identify the inventory, operational status, and storage resources consumed through a Fibre Channel Adapter, you need to know what FCAs are attached to a certain managed server.

To view FCAs that are attached to a server:

- 1 In the navigation pane, select **Servers** > **All Managed Servers**.
- 2 In the content pane, select a server.
- 3 From the View drop-down list, select Hardware. The Hardware pane displays information about the server and the FCAs that are attached to it, such as Manufacturer, Model, Processors, Memory (RAM), and Memory (SWAP). This information is captured by Storage Host Agent Extensions (SHAs).
 - [Viewing Ports and Volumes in an FCA](#)

Viewing Ports and Volumes in an FCA

To view which ports and volumes are in an FCA:

- 1 In the navigation pane, select **Servers** > **All Managed Servers**.
- 2 In the content pane, select a server and then double-click or right-click to open it.
- 3 In the navigation pane, select **Inventory**.
- 4 In the Views pane, expand the **Hardware** list and then select the Fibre Channel Adapter (FCA) name. See [Server Assets](#) on page 20 for more information.
 - [Viewing FCAs Attached to a Server](#)

Viewing Port Connections and Zones

To view switch ports that a port is connected to and zones that a port belongs to:

- 1 In the navigation pane, select **Servers > All Managed Servers**.
- 2 In the content pane, select a server and then double-click or right-click to open it.
- 3 In the navigation pane, select **Inventory**.
- 4 In the Views pane, expand the **Hardware** list and then select the fibre channel port. The content pane displays information about the FCA port.
 - [Viewing FCAs Attached to a Server](#)

Viewing Storage Summary in a Server

To view storage summary in a managed server:

- 1 In the navigation pane, select **Servers > All Managed Servers**.
- 2 In the content pane, select a server and then double-click or right-click to open it.
- 3 In the Views pane, select **Inventory > Storage**. The content pane displays storage information, such as file systems, local attached storage, Direct Attached Storage (DAS), SAN storage, Network Attached Storage (NAS), and database storage.
 - [Viewing File Systems Mounted on a Server](#)
 - [Viewing File System Properties](#)

Viewing File Systems Mounted on a Server

To view file systems mounted on a server:

- 1 In the navigation pane, select **Servers > All Managed Servers**.
- 2 In the content pane, select a server and then double-click or right-click to open it.
- 3 In the Views pane, select **Inventory > Storage > File Systems**. The content pane displays information about all file systems that are mounted on the selected server.
 - [Viewing File Systems Created on a Disk](#)
 - [Viewing File System Properties](#)

Viewing File System Properties

To view properties of a file system:

- 1 In the navigation pane, select **Servers > All Managed Servers**.
- 2 In the content pane, select a server and then double-click or right-click to open it.
- 3 In the Views pane, select **Inventory > Storage > File Systems**.
- 4 In the content pane, select a file system to display the Properties pane. This pane displays details about the file system.
 - [Viewing File Systems Mounted on a Server](#)

Viewing Volume Details

You can view volume details, such as properties, composition, disks, access path, and connectivity by volume.

To view volume details:

- 1 In the navigation pane, select **Servers > All Managed Servers**.
- 2 In the content pane, select a server and then double-click or right-click to open it.
- 3 In the Views pane, select **Inventory > Storage > File Systems**.
- 4 In the content pane, select a file system to display the Volumes pane.
- 5 From the View drop-down list, select Volumes.
- 6 *(Optional)* From the View drop-down list, select an option to display properties, volumes, disks, or connectivity by volume.
 - [Viewing Volume Properties](#)
 - [Viewing Antecedents and Dependents of Volumes for a Managed Server](#)
 - [Viewing Volumes Created on a Disk](#)

Viewing Local Disks

To view local disks used by a file system:

- 1 In the navigation pane, select **Servers > All Managed Servers**.
- 2 In the content pane, select a server and then double-click or right-click to open it.
- 3 In the navigation pane, select **Inventory > Storage > File Systems**.
- 4 In the content pane, select a file system.
- 5 From the View drop-down list, select Disks to display the Disks pane. This pane displays information about disks that are consumed by a file system.
 - [Viewing Remote SAN Based Volumes](#)
 - [Viewing Local Disks or DAS Attached to a Server](#)

Viewing the Storage Supply Chain

To view the storage supply chain as a tree:

- 1 In the navigation pane, select **Servers > All Managed Servers**.
- 2 In the content pane, select a server and then double-click or right-click to open it.
- 3 In the navigation pane, select **Inventory > Storage > File Systems**.
- 4 In the content pane, select a file system.
- 5 From the View drop-down list, select Connectivity to display the Connectivity pane. This pane displays Storage Supply Chain for the selected file system.
 - [Viewing File Systems Mounted on a Server](#)
 - [Viewing File System Properties](#)

Viewing Volume Properties

To view properties of a volume:

- 1 In the navigation pane, select **Servers > All Managed Servers**.
- 2 In the content pane, select a server and then double-click or right-click to open it.
- 3 In the Views pane, select **Inventory > Storage > Volumes**.
- 4 In the content pane, select a volume.
- 5 From the View drop-down list, select Properties to display the Properties pane. This pane displays information about the selected volume.



Note: On some Windows servers, installing new multipathing software might show disks as "Foreign Disks" in the "Disk Management" panel on the managed server. Volumes present on this disk do not show up in the "Disk Management" panel. However, if the storage snapshot specification is run on this managed server, these volumes display in the **Inventory > Storage > Volumes** panel. Log on to the Windows server. Open the "Disk Management" wizard and then import the disks that are marked "Foreign". After the import, run the storage snapshot specification for this managed server.

- [Viewing Unmounted Volume Properties](#)

Viewing Antecedents and Dependents of Volumes for a Managed Server

To view antecedent and dependents of the volume storage supply chain:

- 1 In the navigation pane, select **Servers > All Managed Servers**.
- 2 In the content pane, select a server and then double-click or right-click to open it.
- 3 In the Views pane, select **Inventory > Storage > Volumes**.
- 4 In the content pane, select a volume.
- 5 From the View drop-down list, select Composition to display the Composition pane.
- 6 *(Optional)* In the Composition pane, right-click on a storage resource to open its corresponding SAN Array Browser.
 - [Viewing Antecedents and Dependents of an Aggregate](#)
 - [Viewing Antecedents and Dependents of a Volume for a NAS Filer](#)
 - [Viewing Redologs Antecedents and Dependents](#)
 - [Viewing Datafile Antecedents and Dependents](#)
 - [Viewing Tablespace Antecedents and Dependents](#)
 - [Viewing Antecedent of Aggregate Storage Supply Chain](#)
 - [Viewing Antecedents and Dependents of Volumes for a Managed Server](#)
 - [Viewing the Composition of a Volume](#)
 - [Viewing Volume Details](#)
 - [Viewing Volume Properties](#)
 - [SAN Array Assets](#)

Viewing Access Paths for a Volume

Access paths include Target and Target Port LUN based volumes. This provides visibility into the MPIO configuration of a volume.

To view a list of access paths:

- 1 In the navigation pane, select **Servers > All Managed Servers**.
- 2 In the content pane, select a server and then double-click or right-click to open it.
- 3 In the Views pane, select **Inventory > Storage > Volumes**.
- 4 In the content pane, select a volume.
- 5 In the View drop-down list, select Access Path to display the Access Path pane. This pane provides visibility into the MPIO configuration of a volume by displaying Target and Target LUN based volumes in the list of access paths.
- 6 *(Optional)* Select a path and then select one of the following options from the Actions menu:
 - **Open Target**—Displays the SAN Array Browser or the NAS Filer Browser, depending on the AAA permission.
 - **Open Target Port**—Displays the SAN Array Ports Browser or the NAS Filer Ports Browser, depending on the AAA permission.
 - **Open Target Volume**—Displays the SAN Array Volume Browser or the NAS Filer Volume Browser, depending on the AAA permission.
 - [Viewing Volume Connectivity](#)

Viewing Volume Connectivity

To view the connectivity of a volumes:

- 1 In the navigation pane, select **Servers > All Managed Servers**.
- 2 In the content pane, select a server and then double-click or right-click to open it.
- 3 In the Views pane, select **Inventory > Storage > Volumes**.
- 4 In the content pane, select a volume.
- 5 From the View drop-down list, select Connectivity to display the Connectivity pane. This pane displays the connectivity information for the volume.
- 6 *(Optional)* Select a level and then select **Actions > Open (Enter)** to display the SAN Array Browser or the NAS Filer Browser.

Viewing Disks Utilized by a Volume

To view disks utilized by the volume:

- 1 In the navigation pane, select **Servers > All Managed Servers**.
- 2 In the content pane, select a server and then double-click or right-click to open it.
- 3 In the Views pane, select **Inventory > Storage > Volumes**.
- 4 In the content pane, select a volume.

- 5 From the View drop-down list, select Disks to display the Disks pane. This pane shows information about the disks that are consumed by the volume.
 - [Viewing Remote SAN Based Volumes](#)
 - [Viewing Local Disks](#)
 - [Viewing Local Disks or DAS Attached to a Server](#)

Viewing Local Disks or DAS Attached to a Server

To view local disks or DAS attached to a managed server:

- 1 In the navigation pane, select **Servers > All Managed Servers**.
- 2 In the content pane, select a server and then double-click or right-click to open it.
- 3 In the Views pane, select **Inventory > Storage > Disks**. The content pane displays information about the disks.
 - [Viewing Remote SAN Based Volumes](#)
 - [Viewing Local Disks](#)

Viewing Disk Properties

To view the properties of a selected physical disk:

- 1 In the navigation pane, select **Servers > All Managed Servers**.
- 2 In the content pane, select a server and then double-click or right-click to open it.
- 3 In the Views pane, select Inventory and then select **Storage > Disks**.
- 4 Select a disk to display the Properties pane.
 - [Viewing Volumes Created on a Disk](#)

Viewing Volumes Created on a Disk

To view volumes created on a selected disk:

- 1 In the navigation pane, select **Servers > All Managed Servers**.
- 2 In the content pane, select a server and then double-click or right-click to open it.
- 3 In the Views pane, select **Inventory > Storage > Disks**.
- 4 Select a disk and then select Volumes from the View drop-down list.
 - [Viewing Volume Details](#)
 - [Viewing Volumes Available Through Manager Software](#)

Viewing File Systems Created on a Disk

To view file systems created on a selected disk:

- 1 In the navigation pane, select **Servers > All Managed Servers**.
- 2 In the content pane, select a server and then double-click or right-click to open it.
- 3 In the Views pane, select Inventory and then select **Storage > Disks**.
- 4 Select a disk and then select File Systems from the View drop-down list.
 - [Viewing File Systems Mounted on a Server](#)
 - [Viewing File System Properties](#)

Viewing Volume Manager, MPIO, ZFS, & ASM

To view Manager Software on a server:

- 1 In the navigation pane, select **Servers > All Managed Servers**.
- 2 In the content pane, select a server and then double-click or right-click to open it.
- 3 In the Views pane, select **Inventory > Storage > Manager Software**.
- 4 In the content pane, select an inventory element, such as an Oracle Automatic Storage Management (ASM) disk group.
 - [Viewing Volumes Available Through Manager Software](#)

Viewing Volumes Available Through Manager Software

To view volumes that are available through Manager Software:

- 1 In the navigation pane, select **Servers > All Managed Servers**.
- 2 In the content pane, select a server and then double-click or right-click to open it.
- 3 In the Views pane, select **Inventory > Storage > Manager Software**.
- 4 Select a Manager Software to show detailed information in the bottom content pane.
 - [Viewing Volume Details](#)
 - [Viewing Volumes Created on a Disk](#)

Viewing Unmounted Volume Properties

To view properties of unmounted volumes:

- 1 In the navigation pane, select **Servers > All Managed Servers**.
- 2 In the content pane, select a server and then double-click or right-click to open it.
- 3 In the Views pane, select Inventory and then select **Storage > Unmounted Volumes**.
- 4 Select a volume and then select Properties from the View drop-down list.
 - [Viewing Volume Properties](#)

- [Viewing Unmounted Volume Properties](#)

Viewing Antecedent of Aggregate Storage Supply Chain

To view the antecedent of the aggregate storage supply chain:

- 1 In the navigation pane, select **Servers > All Managed Servers**.
- 2 In the content pane, select a server and then double-click or right-click to open it.
- 3 In the Views pane, select Inventory and then select **Storage > Unmounted Volumes**.
- 4 Select a volume and then select Composition from the View drop-down list.
- 5 *(Optional)* In the Composition pane, select an antecedent or dependent and then open its corresponding SAN Array Browser.
 - [Viewing Antecedents and Dependents of an Aggregate](#)
 - [Viewing Antecedents and Dependents of a Volume for a NAS Filer](#)
 - [Viewing Redologs Antecedents and Dependents](#)
 - [Viewing Datafile Antecedents and Dependents](#)
 - [Viewing Tablespace Antecedents and Dependents](#)
 - [Viewing the Composition of a Volume](#)
 - [Viewing Antecedents and Dependents of Volumes for a Managed Server](#)

Viewing Remote SAN Based Volumes

To view remote SAN based volumes:

- 1 In the navigation pane, select **Servers > All Managed Servers**.
- 2 In the content pane, select a server and then double-click or right-click to open it.
- 3 In the Views pane, select **Inventory > Storage > Unmounted Volumes**.
- 4 In the content pane, select a volume.
- 5 From the View drop-down list, select Disks to display the Disks pane. This pane displays information about disks that are consumed by unmounted volumes.
- 6 *(Optional)* If the volume is LUN based, select then open it to display its corresponding SAN Array Browser.
 - [Viewing Local Disks](#)
 - [Viewing Local Disks or DAS Attached to a Server](#)

Viewing Storage Targets

To view storage targets (SAN Array or NAS Filer (Block)):

- 1 In the navigation pane, select **Servers > All Managed Servers**.
- 2 In the content pane, select a server and then double-click or right-click to open it.
- 3 In the Views pane, select **Relationships > Storage Targets**.
 - [Viewing Access Paths to Storage Targets](#)

Viewing Access Paths to Storage Targets

To view access paths to storage targets:

- 1 In the navigation pane, select **Servers > All Managed Servers**.
 - 2 In the content pane, select a server and then double-click or right-click to open it.
 - 3 In the Views pane, select **Relationships > Storage Targets**.
 - 4 Select a target to display the access paths.
 - 5 *(Optional)* Select an access path and then select one of the following options from the Actions menu:
 - **Open Target**—Displays the SAN Array Browser or the NAS Filer Browser, depending on the AAA permission.
 - **Open Target Port**—Displays the SAN Array Ports Browser or the NAS Filer Ports Browser, depending on the AAA permission.
 - **Open Target Volume**—Displays the SAN Array Volume Browser or the NAS Filer Volume Browser, depending on the AAA permission.
- [Viewing Storage Targets](#)

Viewing Switches Attached to a Server

To view switches attached to a managed server:

- 1 In the navigation pane, select **Servers > All Managed Servers**.
- 2 In the content pane, select a server and then double-click or right-click to open it.
- 3 In the Views pane, select **Relationships > SAN Switches**.
 - [Viewing Fabrics Attached to a Server](#)

Viewing Fabrics Attached to a Server

To view fabrics attached to a server:

- 1 In the navigation pane, select **Servers > All Managed Servers**.
- 2 In the content pane, select a server and then double-click or right-click to open it.
- 3 In the Views pane, select **Relationships > SAN Fabrics**.
 - [Viewing Switches Attached to a Server](#)
 - [Viewing FCA Ports Attached to a Fabric](#)

Viewing FCA Ports Attached to a Fabric

To view FCA ports attached to a fabric:

- 1 In the navigation pane, select **Servers > All Managed Servers**.
- 2 In the content pane, select a server and then double-click or right-click to open it.
- 3 In the Views pane, select **Relationships > SAN Fabrics**.
- 4 In the View drop-down list, select Ports.
 - [Viewing Fabrics Attached to a Server](#)

Viewing Zone Membership

To view zones where a managed server is a member of a certain fabric:

- 1 In the navigation pane, select **Servers > All Managed Servers**.
- 2 In the content pane, select a server and then double-click or right-click to open it.
- 3 In the Views pane, select **Relationships > SAN Fabrics**.
- 4 From the View drop-down list, select Zones.
 - [Viewing Fabrics Attached to a Server](#)

Viewing Databases Hosted by a Server

To view databases that a selected server hosts:

- 1 In the navigation pane, select **Servers > All Managed Servers**.
- 2 In the content pane, select a server and then double-click or right-click to open it.
- 3 In the Views pane, select **Relationships > Databases**.
- 4 *(Optional)* Select a database and then open it to display the Database Browser. You must have Read permissions on the server that is hosting the database.
 - [Viewing Databases](#)

Viewing Storage Initiators & Volumes

To view storage initiators and the volumes for each initiator:

- 1 In the navigation pane, select **Servers > Virtual Servers**.
- 2 In the content pane, select an ESX server and then double-click or right-click to open it.
- 3 Select **Relationships > Storage Initiators**.
- 4 Select an initiator to view the volumes associated with it.


SAN Array Assets

This feature provides visibility into various storage array configurations that are attached to a SAN. This excludes SAN array devices that are directly attached to servers. SE captures generic SAN array assets as well as vendor-specific assets.


Using this feature, a server administrator can view the following:

- SAN array storage utilization and configuration
- SAN Array security configuration
- Storage resources shared between applications or hosts

SE captures the following generic SAN array assets:

SAN Array (Storage Systems)  —SAN array configuration information. SE uses an IP-based network mechanism to access the device or device interface, such as API, CLI, and so on. Storage Visibility and Automation discovers the Manufacturer, Model, Serial Number, Firmware Version, and Storage Capacity for a SAN Array.


Disk Controllers—Disk controllers are discovered for arrays. However, the Storage Visibility and Automation user interface does not display the association or relationship between a disk controller and a disk for any disk controller.

Storage Volumes  —Storage volumes that are carved out of disks. Storage Visibility and Automation discovers the Storage Capacity, Block Size (if available), Storage Type, and Volume ID. Meta volumes (devices) are composite volumes that are created using two or more regular storage volumes.

Composite Volumes—Some SAN arrays support composite volumes. For these types of arrays, Storage Visibility and Automation will capture information for composite volumes. Composite volumes allow individual storage volumes to be concatenated and create a storage volume with larger storage capacity.

Port Controllers—The port controller and a list of fabric ports in the controller.

Fabric Ports—SAN array fabric ports are used to provide FC connectivity between SAN array and fibre switch (standalone or part of a fabric). Storage Visibility and Automation does not capture internal fabric ports in the system. It captures the Port Number, State (Offline, Online), and the World Wide Name.

Storage Pools  —Some SAN arrays support grouping volumes together, based on common characteristics. For example, for an HP XP or Hitachi SAN array, groups of storage volumes are grouped together in an entity called Array Groups. Not all SAN arrays support storage pool concepts. For SAN arrays that do support pool concepts, Storage Visibility and Automation captures the storage type and storage capacity. For supported SAN arrays, Storage Visibility and Automation captures the free extents in the pool. If the storage pool is not supported by the device, HP creates the storage pool for the storage volumes, based on the storage type.

LUN Mapping—Lun Mapping information, such as Storage Volume, SAN Array Port, Lun ID, and Host FC Port/FCA information.

- [SAN Array Assets and Relationships](#)

SAN Array Assets and Relationships

Storage Visibility and Automation displays relationships between SAN array elements and other storage asset discovery features. See [Table 4](#).

table 4 SAN Arrays Assets and Relationships

SAN Array Asset	External Element	Description
Connected fabric port	Ports connectivity	Provides the point-to-point links through a fabric.
Connected device	Fabric zone/alias context	Captures devices attached to the ports that are members of a zone or alias.

Update from Storage Essentials

Since, by default, storage information is collected from SE once every 12 hours, you might need updated information about a SAN array more frequently than twice a day. Check SE to verify the frequency of its data collection, and configure it if necessary. See the *Storage Essentials SRM Software User Guide* for information about configuring the schedule for data collection.

In Storage Visibility and Automation, you can request an update of SAN information from SE at the device level (such as, the SAN array). See [Update from Storage Essentials](#) on page 17 and the *HP Server Automation: Storage Visibility and Automation Installation & Administration Guide* for more information.

Open with Storage Essentials

When you are viewing storage information about a SAN array in Storage Visibility and Automation and would also like to view storage information for the same SAN array in Storage Essentials, you can launch Storage Essentials to display the data that was discovered. See [Open with Storage Essentials \(Click & Launch\)](#) on page 18 for more information.

Frequently Asked Questions

Table 5 answers some frequently asked questions on finding information about SAN arrays.

table 5 Frequently Asked Questions About SAN Array Assets

	Question	How to Find the Answer
1.	What storage is available in a SAN array in a datacenter?	<ul style="list-style-type: none"> • Viewing Zones Configured for an Array on page 41
2.	What LUNs are bound to the servers?	<ul style="list-style-type: none"> • Viewing Storage Initiators Consuming Storage Resources from an Array on page 40 • Viewing Initiator Volumes and Ports on page 40 • Viewing Storage Volumes with Access Paths for Remote Initiators on page 40 • Viewing Volumes Served by a SAN Array Port on page 42
3.	Are critical applications configured for high availability, such as multiple access paths? What are the redundant paths between a server and a SAN array for an application?	<ul style="list-style-type: none"> • Viewing Storage Volumes with Access Paths for Remote Initiators on page 40
4.	What is the storage utilization of the SAN array?	<ul style="list-style-type: none"> • Viewing Zones Configured for an Array on page 41
5.	Are the critical applications backed up?	<ul style="list-style-type: none"> • Viewing Storage Volumes with Access Paths for Remote Initiators on page 40
6.	Do the SAN arrays provide room for growth?	<ul style="list-style-type: none"> • Viewing Zones Configured for an Array on page 41
7.	When will the SAN arrays run out of space?	<ul style="list-style-type: none"> • Viewing Zones Configured for an Array on page 41
8.	What is causing application performance degradation? How is all of the SAN configuration impacting the application? What are the shared resource between applications?	<ul style="list-style-type: none"> • Viewing Storage Volumes with Access Paths for Remote Initiators on page 40 • Viewing the Access Path from the Volume on page 44

Viewing SAN Arrays

To view a list of SAN arrays with their hardware and status:

- 1 In the navigation pane, select **Storage > SAN Arrays**.
- 2 Select a SAN array to view the Summary in the content pane. The content pane displays information about the SAN array hardware and status.
 - [Viewing SAN Arrays and Storage Configurations](#)
 - [Viewing Summary of a SAN Array](#)

Viewing SAN Arrays and Storage Configurations

To view the SAN array and storage configurations:

- 1 In the navigation pane, select **Storage > SAN Arrays**.
 - 2 In the content pane, select a SAN array. The content pane displays information about the SAN array hardware and status.
 - 3 *(Optional)* Select a target and then select one of the following options from the Actions menu:
 - **Open**—Displays the SAN array details in a separate window, depending on the AAA permission.
 - **Open with HP Service Automation Visualizer**—Opens the target with Service Automation Visualizer (SAV) and displays the storage map.
 - **Open with Storage Essentials**—Opens the target with Storage Essentials.
 - **Update from Storage Essentials**—Requests an update of storage information at the device level from Storage Essentials.
 - **Rename**—Displays an editable field to rename the SAN array directly in the table, depending on the AAA permission.
 - **Delete**—Removes the SAN array from the Model Repository.
- [Viewing SAN Arrays](#)
 - [Viewing Summary of a SAN Array](#)

Viewing Summary of a SAN Array

To view a SAN array summary:

- 1 In the navigation pane, select **Storage > SAN Arrays**.
- 2 In the content pane, select a SAN array.
- 3 In the Views pane, select Summary.
- 4 In the content pane, select a SAN array and then open it to display the summary.
 - [Viewing SAN Arrays](#)
 - [Viewing SAN Arrays and Storage Configurations](#)
 - [Viewing Hardware Information for a SAN Array](#)

Viewing SAN Array Properties

To view properties for a SAN array:

- 1 In the navigation pane, select **Storage > SAN Arrays**.
- 2 In the content pane, select a SAN array.
- 3 From the View drop-down list, select Properties. The content pane displays properties of the SAN array.

- 4 *(Optional)* Select a target and then select one of the following options from the Actions menu:
 - **Open**—Displays the SAN array, depending on the AAA permission.
 - **Open with HP Service Automation Visualizer**—Opens the target with Service Automation Visualizer (SAV) and displays the storage map.
 - **Open with Storage Essentials**—Opens the target with Storage Essentials.
 - **Update from Storage Essentials**—Requests an update of storage information at the device level from Storage Essentials.
 - **Rename**—Renames the target. Changes are saved in the system.
 - **Delete**—Removes the SAN array from the Model Repository.
 - [Viewing SAN Arrays](#)
 - [Viewing SAN Arrays and Storage Configurations](#)

Viewing Customers for a SAN Array

To view customers for a SAN array:

- 1 In the navigation pane, select **Storage > SAN Arrays**.
- 2 In the content pane, select a SAN array.
- 3 From the View drop-down list select Properties.
- 4 From the Actions menu, select **Open**, or right-click and then select **Open**. The Properties window displays.
- 5 Click the Change link to open the Select Customer window.
- 6 Select a customer and then click **Select**.
 - [Viewing the SAN Array History Log](#)

Viewing the SAN Array History Log

To view the history log for a SAN array:

- 1 In the navigation pane, select **Storage > SAN Arrays**.
- 2 In the content pane, select a SAN array.
- 3 In the View drop-down list, select History. The content pane displays the history log for the SAN array.
- 4 In the content pane, select an event from the history log and then select the following option from the Actions menu:
 - **View Event Details**—Displays detailed information about the event.
 - Or
 - Right-click on the event and select **View Event Details**.
- 5 *(Optional)* Click **Export** to export the history log to a .csv or an html file.
 - [Viewing the Database History Log](#)
 - [Viewing the NAS Filer History Log](#)

Viewing Storage Initiators Consuming Storage Resources from an Array

To view storage initiators consuming resources from an array:

- 1 In the navigation pane, select **Storage > SAN Arrays**.
- 2 In the content pane, select a SAN array.
- 3 In the View drop-down list, select Storage Initiators. The content pane displays a list of storage initiators.
- 4 *(Optional)* In the lower content pane, select a storage initiator and then select the following option from the Actions menu:
 - **Open Device**—Opens the Device Explorer.Or
 - Right-click on the target and select **Open Device**.
 - [Viewing Initiator Volumes and Ports](#)

Viewing Initiator Volumes and Ports

To view initiator volumes and ports in a SAN array:

- 1 In the navigation pane, select **Storage > SAN Arrays**.
- 2 In the content pane, select a SAN array.
- 3 In the View drop-down list, select Storage Initiators.
- 4 Double-click on a SAN array. The SAN Array Browser displays.
- 5 In the SAN Array Browser, select a storage initiator. The content pane displays a list of initiator volumes and ports.
- 6 *(Optional)* In the lower content pane, select a target and then select the following option from the Actions menu:
 - **Open Device**—Opens the Device Explorer for the selected server.
 - **Open Initiator Port**—Displays the hardware information for the selected server.
 - **Open Initiator Volume**—Displays the storage information for the selected server.
 - [Viewing Storage Volumes with Access Paths for Remote Initiators](#)
 - [Viewing Volumes Served by a SAN Array Port](#)
 - [Viewing Storage Initiators Consuming Storage Resources from an Array](#)

Viewing Storage Volumes with Access Paths for Remote Initiators

To view storage volumes with access paths for remote initiators not managed by HP:

- 1 In the navigation pane, select **Storage > SAN Arrays**.
- 2 In the content pane, select a SAN array.
- 3 In the View drop-down list, select Storage Initiators. The content pane displays a list of initiator volumes and ports.

- 4 In the lower content pane, select a storage initiator.
- 5 Right-click on the selected SAN array and then select **Open**. The content pane displays a list of storage volumes.
 - [Viewing Initiator Volumes and Ports](#)
 - [Viewing Volumes Served by a SAN Array Port](#)
 - [Viewing Storage Initiators Consuming Storage Resources from an Array](#)

Viewing Attached Fabrics in an Array

To view attached fabrics in a SAN array:

- 1 In the navigation pane, select **Devices > Storage > SAN Arrays**.
- 2 In the content pane, select a SAN array.
- 3 In the View drop-down list, select SAN Fabrics. The content pane displays information about attached fabrics.

Viewing Fabric Ports and Connectivity in an Array

To view array ports and their connectivity to the selected fabric:

- 1 In the navigation pane, select **Storage > SAN Arrays**.
- 2 In the content pane, select a SAN array.
- 3 In the View drop-down list, select Ports. The content pane displays information about array ports.

Viewing Zones Configured for an Array

To view zones configured for an array in a selected fabric:

- 1 In the navigation pane, select **Storage > SAN Arrays**.
- 2 In the content pane, select a SAN array.
- 3 In the View drop-down list, select SAN Fabrics.
- 4 In the content pane, open a SAN array.
- 5 In the SAN Array Browser, select a Fabric.
- 6 In the View drop-down list, select Zones. The content pane displays the information for zone sets.

Viewing SAN Switches Attached to an Array

To view SAN switches attached to an array:

- 1 In the navigation pane, select **Storage > SAN Arrays**.
- 2 In the content pane, select a SAN array.
- 3 In the View drop-down list, select SAN Switches. The content pane displays the information for SAN switches.
- 4 In the content pane, open a SAN array.

Viewing Hardware Information for a SAN Array

To view the hardware information for the SAN array:

- 1 In the navigation pane, select **Storage > SAN Arrays**.
- 2 In the content pane, select a SAN array.
- 3 In the View drop-down list, select Hardware. The content pane displays the hardware information.
 - [Viewing Summary of a SAN Array](#)

Viewing Front End Fabric Ports in a SAN Array

To view front end fabric ports in a SAN array:

- 1 In the navigation pane, select **Storage > SAN Arrays**.
- 2 In the content pane, select a SAN array.
- 3 In the View drop-down list, select Ports. The content pane displays the port information.

Viewing Properties of the Fabric Port in a SAN Array

To view the properties of the fibre port:

- 1 In the navigation pane, select **Storage > SAN Arrays**.
- 2 In the content pane, select a SAN array.
- 3 In the View drop-down list, select Ports.
- 4 In the lower content pane, highlight a port to select it.
- 5 In the upper content pane, open a SAN array. The content pane displays the properties of the fibre port

Viewing Volumes Served by a SAN Array Port

To view volumes served by a SAN array port:

- 1 In the navigation pane, select **Storage > SAN Arrays**.
- 2 In the content pane, select a SAN array.
- 3 From the View drop-down list, select Ports.
- 4 In the content pane, open a SAN array.
- 5 In the SAN Array Browser, highlight a port to select it.
- 6 In the View drop-down list, select Volumes. The content pane displays a list of volumes.
- 7 *(Optional)* Select a target and then select the following option from the Actions menu:
 - **Open Device**—Opens the Device Explorer for the selected server.
 - **Open Initiator Port**—Displays the hardware information for the selected server.
 - **Open Initiator Volume**—Displays the storage information for the selected server.

Viewing Zones Configured for an Array Port

To view zones configured for an array port:

- 1 In the navigation pane, select **Storage > SAN Arrays**.
- 2 In the content pane, select a SAN array.
- 3 From the View drop-down list, select Ports.
- 4 In the content pane, open a SAN array.
- 5 In the SAN Array Browser, highlight a port to select it.
- 6 In the View drop-down list, select Zones to display a list of zones for the array port.

Viewing Storage Summary for a SAN Array

To view the summary of storage information offered by a SAN Array:

- 1 In the navigation pane, select **Storage > SAN Arrays**.
- 2 In the content pane, select a SAN array and then open it.
- 3 From the View drop-down list, select Summary. The content pane displays summary information.
 - [Viewing Storage Volumes with Access Paths for Remote Initiators](#)

Viewing Volumes in a SAN Array

To view volumes in a SAN array:

- 1 In the navigation pane, select **Storage > SAN Arrays**.
- 2 In the content pane, select a SAN array and then open it.
- 3 In the Views pane, select **Inventory > Storage > Volumes**. The content pane displays the volumes.
 - [Viewing Volume Properties](#)

Viewing Volume Properties

To view properties of a volume:

- 1 In the navigation pane, select **Storage > SAN Arrays**.
- 2 In the content pane, select a SAN array and then open the SAN array.
- 3 In the Views pane, select **Inventory > Storage > Volumes**.
- 4 In the content pane, select a volume and then open it. The content pane displays the properties.
 - [Viewing Volumes in a SAN Array](#)

Viewing the Connectivity of a Volume

To view the storage supply chain connectivity of a volume:

- 1 In the navigation pane, select **Storage > SAN Arrays**.
- 2 In the content pane, select a SAN array and then open the SAN array.
- 3 In the Views pane, select **Inventory > Storage > Volumes**.
- 4 In the content pane, select a volume.
- 5 From the View drop-down list, select Connectivity. The content pane displays the connectivity of the volume.
 - [Viewing Volume Connectivity](#)
 - [Viewing Redologs Connectivity](#)
 - [Viewing Storage Supply Chain Connectivity of the Tablespace](#)

Viewing the Composition of a Volume

To view the antecedents and dependents of the volume storage supply chain:

- 1 In the navigation pane, select **Storage > SAN Arrays**.
- 2 In the content pane, select a SAN array and then open the SAN array.
- 3 In the Views pane, select **Inventory > Storage > Volumes**.
- 4 In the content pane, select a volume.
- 5 From the View drop-down list, select Composition. The content pane displays the composition of the volume.
- 6 *(Optional)* Select a target and then select the following option from the Actions menu:
 - **Open**—Opens the SAN array or Server Storage view.
 - [Viewing Antecedents and Dependents of an Aggregate](#)
 - [Viewing Antecedents and Dependents of a Volume for a NAS Filer](#)
 - [Viewing Redologs Antecedents and Dependents](#)
 - [Viewing Datafile Antecedents and Dependents](#)
 - [Viewing Tablespace Antecedents and Dependents](#)
 - [Viewing Antecedent of Aggregate Storage Supply Chain](#)
 - [Viewing Antecedents and Dependents of Volumes for a Managed Server](#)

Viewing the Access Path from the Volume

To view the access path:

- 1 In the navigation pane, select **Storage > SAN Arrays**.
- 2 In the content pane, select a SAN array and then open it.

- 3 In the Views pane, select **Inventory > Storage > Volumes**.
- 4 In the content pane, select a volume.
- 5 From the View drop-down list, select Access Path. The content pane displays the access path.
- 6 *(Optional)* Select a target and then select the following option from the Actions menu:
 - **Open Device**—Opens the Device Explorer for the selected server.
 - **Open Initiator Port**—Displays the hardware information for the selected server.
 - **Open initiator Volume**—Displays the storage information for the selected server.

Viewing Array Ports from the Selected Volume

To view the array port that is part of the LUN mapping:

- 1 In the navigation pane, select **Storage > SAN Arrays**.
- 2 In the content pane, select a SAN array and then open it.
- 3 In the Views pane, select **Inventory > Storage > Volumes**.
- 4 In the content pane, select a volume.
- 5 From the View drop-down list, select Ports. The content pane displays the ports.
- 6 *(Optional)* Select a target and then select the following option from the Actions menu:
 - **Open Port**—Opens the SAN arrays view.
 - [Viewing Front End Fabric Ports in a SAN Array](#)
 - [Viewing Fabric Ports and Connectivity in an Array](#)

Viewing Storage Pools

To view storage pools configured in the storage system:

- 1 In the navigation pane, select **Storage > SAN Arrays**.
- 2 In the content pane, select a SAN array and then open it.
- 3 In the Views pane, select **Inventory > Storage > Pools**. The content pane displays the list of storage pools.
 - [Viewing Storage Pool Properties](#)
 - [Viewing Volumes for a Selected Pool](#)

Viewing Storage Pool Properties

To view the properties of a storage pool:

- 1 In the navigation pane, select **Storage > SAN Arrays**.
- 2 In the content pane, select a SAN array and then open it.
- 3 In the Views pane, select **Inventory > Storage > Pools**.
- 4 In the content pane, select a storage pool. The content pane displays the properties.

- [Viewing Storage Pools](#)
- [Viewing Volumes for a Selected Pool](#)

Viewing Volumes for a Selected Pool

To view volumes for a selected pool:

- 1 In the navigation pane, select **Storage > SAN Arrays**.
- 2 In the content pane, select a SAN array and then open it.
- 3 In the Views pane, select **Inventory > Storage > Pools**.
- 4 In the content pane, select a pool.
- 5 From the View drop-down list, select Volumes. The content pane displays the volumes.

Viewing Replication

A replication pair consists of the source volume and the target (or copy) volume, including properties that describe the type of replication used to back up or copy the source volume. Replication can be either local (where source and target volumes are on the same array) or remote (where source and target volumes are on different arrays).

Replication tree control is available on the **Inventory > Storage** panel. A replication pair consists of the source volume and the target (or copy) volume, including properties that describe the type of replication used to back up or copy the source volume.

To view information about replication pairs:

- 1 In the navigation pane, select **Devices > Storage > SAN Arrays**.
Or
Select **Devices > Storage > NAS Filers**.
- 2 In the content pane, select a storage system and then open it.
- 3 In the SAN Array or NSA Filer browser, select **Inventory > Storage > Replication**.

For information about supported storage array models and replication types, see the *Server Automation Compatibility Matrix*.

Fabric Assets


This feature provides visibility into fabric configurations in a SAN. Storage elements in a fabric include physical entities, such as fabric switches, ports, and security items, such as Zones and Zonesets.

Minimal information about fabrics is displayed in the user interface, such as when there is a connection between the fabric and the server, the Device Explorer displays fabrics. To view detailed information about fabric assets, you must use the Global File System (OGFS) feature. See [Global File System \(OGFS\)](#) on page 87 for more information.

With this feature, a system administrator can view the following:

- Physical fabric configuration
- Security configuration enabled in the fibre channel network
- Servers and SAN storage devices connected to the fibre channel network
- Storage resources shared between applications or managed servers

Storage Visibility and Automation captures the following fabric information in a SAN:

Fibre Switch and Fabrics  —Identifies whether a fibre switch is a principal switch or a subordinate switch of the fabric. After the principal switch is identified, Storage Visibility and Automation gathers information on the connected fibre switches and end devices, such as servers, SAN-based storage devices, and so on. Storage Visibility and Automation lists the switch ports for all switches in the fabric. Storage Visibility and Automation collects the Manufacturer, Model, Serial Number, Firmware, Hardware Version, World Wide Name (WWN), Domain Name, IP, and the number of Ports for each of the switch. Storage Visibility and Automation identifies a physical fabric by the WWN of the principal switch. If the role of a switch changes from subordinate to principal, the identity of the fabric changes—this change is discovered by SE. Storage Visibility and Automation does not collect routing table information in each switch and does not support multiple vendor fabrics that are in an interop configuration.


Switch Enclosure—Information about the switch enclosure includes blades and slots that make up that enclosure. This feature applies to director-class switches. Storage Visibility and Automation collects the Part Number, Serial Number, Manufacturer, and Model.

Switch Blade—Blade information about the enclosure. Storage Visibility and Automation collects the Manufacturer, Model and Serial Number of the blade.

Switch Ports—The fibre channel port World Wide Name (WWN), including information about F_Ports, E_Ports, and G_Ports. For each port, Storage Visibility and Automation collects the WWN, Port Number, Port State, and Port FCID (Fibre Channel ID). If enclosure is captured, Storage Visibility and Automation also collects slot information for the ports. Storage Visibility and Automation does not collect node loop ports attached to an arbitrated loop. However, Storage Visibility and Automation collects fabric switch loop port.


E_Ports/Inter-Switch Links—Inter-Switch Link (ISL) information. SE identifies the E_Ports that participate in the ISLs for each pair of fibre switches.

Ports Connectivity and N_Ports—For each fibre switch port, Storage Visibility and Automation collects the World Wide Name (WWN) of the connected N_Port, such as FCA Port (REF-008) and Storage Array Port (REF-009). This information helps identify the dependency chain from the initiators to the targets through the fabric, and also displays information about the multi-path between the initiators and the targets. Ports that are discovered without any parent device information are marked as Unknown Connected Ports. Storage Visibility and Automation does not collect node loop ports attached to an arbitrated loop.

Zoning Database and Zones  —All active zones configured in the zoning database of the principal switch. Zones contain a list of World Wide Name (WWN) and alias naming. Alias naming may not be supported by all fibre switch vendors. A zoning database may not be synchronized between switches. The

administrator should verify that zoning databases across the fabric are synchronized. Storage Visibility and Automation does not capture the zoning information if the list (members) are configured as Domain:Port format.

Alias  —Storage Visibility and Automation collects all alias in a zoning database. Alias is not supported by McData-based fabric switches. Storage Visibility and Automation does not collect the alias information if the list (members) are configured as Domain:Port format.

Zonesets  —Storage Visibility and Automation collects all active zonesets in a fabric. Storage Visibility and Automation also collects all zones that make up a zoneset.

- [Fabric Assets and Relationships](#)

Fabric Assets and Relationships

Storage Visibility and Automation displays relationships between fabric elements and other storage asset discovery features. See [Table 6](#).

table 6 Fabric Assets and Relationships

Fabric Asset	External Element	Description
Connected N_Port	Ports connectivity	Provides the point-to-point links through a fabric.

NetApp Assets

This feature provides visibility into NetApp storage configurations in a SAN or IP network, such as File I/O based storage entities (Filer Volumes, Qtrees) and Fabric elements (FCA/Ports).

A NetApp storage administrator can view the following:

- NetApp storage utilization and configuration
- Storage resources shared between applications or managed servers


SE captures the following NetApp information in a SAN:

NetApp Filer—Filer Name, Manufacturer, Model, Serial Number, Firmware Version, Customer, IP Address, Facility, Status, Description, Discovered on, Last Scan, Scan Status, Object ID.

Disks—NetApp disk storage capacity. Storage Visibility and Automation discovers the raw capacity of the disk and discovers whether the disk is consumed by RAID groups.

RAID Groups—NetApp creates RAID groups based on disks. RAID group is an internal entity that is not configured by the user. Storage Visibility and Automation does not display storage information for RAID groups. The storage information is not available through the API. It is derived by the size of the disk and configuration, such as RAID 4 or RAID 4DP.

Plex—NetApp creates Plex based on RAID Groups. Plex is an internal entity that is not configured by the user. Storage Visibility and Automation does not display storage information for Plex. The storage information is not available through the API—it is derived by the size of the RAID Group.

Aggregates —Aggregate is a storage entity that is introduced by ONTAP 7.0. Storage Visibility and Automation discovers aggregate caption and aggregate capacity.

File I/O—NetApp exposes storage resources for File I/O. NetApp volumes, Qtree and Directories are exposed through CIFS or NFS for File I/O. Storage Visibility and Automation collects storage information related to File I/O access.

NetApp Volumes—Filer volume information that includes storage capacity, vFiler that the volumes are associated with, aggregate that the volume consumes, volume type (Traditional or Flex), snapshot reserve, snapshot reserve size, and whether the volume is a target or a source of replication.

Traditional Volumes—Volumes based on ONTAP 6.5 and traditional volumes in ONTAP 7.0 or higher.

Flex Volumes—Flex is a storage entity that is introduced by ONTAP 7.0. In addition to filer volume information, Storage Visibility and Automation also discovers committed capacity and space guarantee (volume, none, file) for flex volumes.

Qtrees—A subdirectory in a volume that acts as a virtual sub-volume with special attributes, such as primarily quotas and permissions.

Quota—The quota against the NetApp volumes. Quota that is applied on the Qtrees is also captured at the volume level. Storage Visibility and Automation discovers the following quota information:

- Caption
- Type (tree, user, or group)
- Qtree (Qtree that is applicable)
- Unix ID (ID of the user or group, whichever is applicable)
- Windows ID (ID of the user or group, whichever is applicable)
- Space threshold
- Space threshold unit (in KB/MB, and so on)
- Quota target (Default targets are discovered as *.)

Quota will also have zero or more QuotaLimit. QuotaLimit captures the following information:


- Limit type (DiskSpace or NumberOfFiles)
- Soft Limit Value
- Soft Limit Unit
- Hard Limit Value
- Hard Limit Unit

Directory—Directory paths that are exported through CIFS share or NFS. Storage Visibility and Automation does not discover all directories that are residing in the NetApp volume.

File I/O Exports—NetApp provides exporting NetApp Volumes using File I/O through CIFS and NFS protocol.

CIFS—Common Internet File System. NetApp shares and the volume/qtree/directory path. Storage Visibility and Automation does not discover the managed servers that are consuming the NetApp resources through CIFS protocol.

NFS—Network File System. Export information for the volumes/Qtree/directory path. HP might discover stale information, based on the data available to it through the API.

NetApp vFiler —vFiler configuration. Storage Visibility and Automation discovers IP addresses and the volume path that is configured for each vFiler. NetApp requires that a MultiStore license is enabled in the filer to support virtual filers. If a MultiStore license is not enabled, Storage Visibility and Automation assumes that a default vfiler0 exists in the system.

- [NetApp Assets and Relationships](#)

NetApp Assets and Relationships

Storage Visibility and Automation displays relationships between NetApp elements and other storage asset discovery features. See [Table 7](#).

table 7 Fabric Assets and Relationships

Fabric Asset	External Element	Description
Connected fabric port	Ports connectivity	Provides the point-to-point links through a fabric.
NFS exports and file I/O storage elements	Remote file system in a server	Provides supply chain from the managed server to the NetApp, based on NFS protocol.

- [Frequently Asked Questions](#)

Update from Storage Essentials

Since, by default, storage information is collected from SE once every 12 hours, you might need updated information about a NetApp filer more frequently than twice a day. You can modify this data collection frequency by modifying a setting in SE. See the *Storage Essentials SRM Software User Guide* for information about configuring the schedule for data collection.

You can also request an update of SAN information from SE at the NetApp level. See [Update from Storage Essentials](#) on page 17 for more information.

Open with Storage Essentials

When you are viewing storage information about a NetApp filer in Storage Visibility and Automation and would also like to view storage information for the same NetApp filer in Storage Essentials, you can launch Storage Essentials to display the data that was discovered. See [Open with Storage Essentials \(Click & Launch\)](#) on page 18 for more information. See the *Storage Essentials SRM Software User Guide* for information about the discovery process in SE.

Frequently Asked Questions

Table 8 answers some frequently asked questions on finding information about NetApp assets.

table 8 Frequently Asked Questions About NetApp Assets

	Question	How to Find the Answer
1.	What storage is available in the NetApp in a datacenter?	<ul style="list-style-type: none">• Viewing Summary of a NAS Filer on page 51
2.	What file systems are exported to the servers?	<ul style="list-style-type: none">• Viewing Exports for a vFiler on page 53
3.	What is the storage utilization of the NetApp?	<ul style="list-style-type: none">• Viewing Summary of a NAS Filer on page 51
4.	Does the NetApp Filer provide room for growth?	<ul style="list-style-type: none">• Viewing Summary of a NAS Filer on page 51
5.	When do the NetApp Filers run out of space?	<ul style="list-style-type: none">• Viewing Summary of a NAS Filer on page 51

Viewing NAS Filers

To view NAS Filers:

- 1 In the navigation pane, select **Devices > Storage > NAS Filers**.
- 2 From the View drop-down list, select Summary.
 - [Viewing the NAS Filer Storage Configuration](#)
 - [Viewing Summary of a NAS Filer](#)
 - [Viewing NAS Filer Properties](#)

Viewing the NAS Filer Storage Configuration

To view information about NAS Filer storage configuration:

- 1 In the navigation pane, select **Devices > Storage > NAS Filers**.
- 2 Open a NAS Filer.
- 3 In the navigation pane, select **Inventory**.
- 4 In Views pane, select a configuration to change the display in the content pane.
 - [Viewing Summary of a NAS Filer](#)

Viewing Summary of a NAS Filer

To view a NAS filer summary:

- 1 In the navigation pane, select **Devices > Storage > NAS Filers**.
- 2 From the View drop-down list, select Summary.
- 3 In the content pane, select a NAS Filer and open it to display the Summary.

- [Viewing the NAS Filer Storage Configuration](#)

Viewing NAS Filer Properties

To view the properties of a NAS Filer:

- 1 In the navigation pane, select **Devices > Storage > NAS Filers**.
- 2 From the View drop-down list, select Properties.
- 3 In the content pane, select a NAS Filer and then open it to display its properties.
 - [Viewing Summary of a NAS Filer](#)
 - [Viewing the NAS Filer Storage Configuration](#)
 - [Viewing NAS Filers](#)

Viewing Customers for a NAS Filer

To view customers that exist in the Model Repository:

- 1 In the navigation pane, select **Devices > Storage > NAS Filers**.
- 2 From the View drop-down list, select Properties.
- 3 In the content pane, select a NAS Filer and open it to display the Properties.
- 4 Click the “Change” link next to Customers to open the Select Customer dialog.
- 5 In the Select Customer dialog, select a customer and then click Select to display its properties.
 - [Viewing the NAS Filer History Log](#)

Viewing the NAS Filer History Log

To view the history log for the NAS Filer:

- 1 In the navigation pane, select **Devices > Storage > NAS Filers**.
- 2 From the View drop-down list, select History.
- 3 In the content pane, select a NAS Filer and open it to display the history log.
- 4 From the View drop-down list, select a time range for this history log, such as Last Day, Last Week, Last Month, Last Quarter, or Custom Range.
- 5 *(Optional)* Right-click an event to open the Event Details dialog.
- 6 *(Optional)* Click **Export** to export the history log to a file, such as .csv or .html.
 - [Viewing the Database History Log](#)
 - [Viewing the SAN Array History Log](#)

Viewing vFilers

To view the vFilers that are configured in the NetApp system:

- 1 In the navigation pane, select **Device > Storage > NAS Filers**.
- 2 In the content pane, select a NAS Filer.
- 3 From the View drop-down list, select Virtualization.
 - [Viewing Volumes Configured for a vFiler](#)
 - [Viewing Exports for a vFiler](#)

Viewing Volumes Configured for a vFiler

To view the volumes that are configured for a vFiler:

- 1 In the navigation pane, select **Devices > Storage > NAS Filers**.
- 2 In the content pane, select a NAS Filer and then open it.
- 3 In the Views pane, select **Inventory > Virtualization**.
- 4 From the View drop-down list, select Volumes.
- 5 In the content pane, select a vFiler.
 - [Viewing Filer Volumes Created by a Disk](#)
 - [Viewing Filer Volumes Created by an Aggregate](#)
 - [Viewing Filer Volumes Configured in a NAS Filer](#)

Viewing Exports for a vFiler

To view the exports for a vFiler:

- 1 In the navigation pane, select **Devices > Storage > NAS Filers**.
- 2 In the content pane, select a NAS Filer and then open it.
- 3 In the Views pane, select **Inventory > Virtualization**.
- 4 From the View drop-down list, select Exports.
- 5 In the content pane, select a vFiler.
 - [Viewing vFilers](#)

Viewing Storage Summary for a NAS Filer

To view the summary of storage information offered by a NAS filer:

- 1 In the navigation pane, select **Devices > Storage > NAS Filers**.
- 2 In the content pane, select a NAS filer and then open it.
- 3 In the Views pane, select **Inventory > Storage**. The content pane displays summary information.
 - [Viewing Disks in a NAS Filer](#)

Viewing Disks in a NAS Filer

To view the disks in a NAS Filer:

- 1 In the navigation pane, select **Devices > Storage > NAS Filers**.
- 2 In the content pane, select a NAS Filer and then open it.
- 3 In the Views pane, select **Inventory > Storage > Disks**.
- 4 Select a disk and then open it.
 - [Oracle Database Assets](#)

Viewing NAS Filer Disk Properties

To view the properties of a NAS Filer disk:

- 1 In the navigation pane, select **Devices > Storage > NAS Filers**.
- 2 In the content pane, select a NAS Filer and then open it.
- 3 In the Views pane, select **Inventory > Storage > Disks**.
- 4 From the View drop-down list, select Properties.
- 5 Select a disk to display its properties.
 - [Viewing Filer Volumes Created by a Disk](#)

Viewing Filer Volumes Created by a Disk

To view the filer volumes that are created by a disk:

- 1 In the navigation pane, select **Devices > Storage > NAS Filers**.
- 2 In the content pane, select a NAS Filer and then open it.
- 3 In the Views pane, select **Inventory > Storage > Disks**.
- 4 Select a disk.
- 5 From the View drop-down list, select Volumes.
 - [Viewing Aggregates Created by a Disk](#)
 - [Viewing Filer Volumes Created by a Disk](#)
 - [Viewing Filer Volumes Created by an Aggregate](#)

- [Viewing Filer Volumes Configured in a NAS Filer](#)
- [Viewing Volumes Configured for a vFiler](#)

Viewing Aggregates Created by a Disk

To view the NAS Filer aggregates that are created by a disk:

- 1 In the navigation pane, select **Devices > Storage > NAS Filers**.
- 2 In the content pane, select a NAS Filer and then open it.
- 3 In the Views pane, select **Inventory > Storage > Disks**.
- 4 Select a disk.
- 5 From the View drop-down list, select Aggregates.
 - [Viewing Aggregates Configured in a NAS Filer](#)

Viewing Plexes on a Disk

To view the plexes that are on top of a disk in the storage supply chain:

- 1 In the navigation pane, select **Devices > Storage > NAS Filers**.
- 2 In the content pane, select a NAS Filer and then open it.
- 3 In the Views pane, select **Inventory > Storage > Disks**.
- 4 Select a disk.
- 5 From the View drop-down list, select Plexes.
 - [Viewing Plexes Used by an Aggregate](#)

Viewing RAID Groups on a Disk

To view the RAID groups that are on top of a disk in the storage supply chain:

- 1 In the navigation pane, select **Devices > Storage > NAS Filers**.
- 2 In the content pane, select a NAS Filer and then open it.
- 3 In the Views pane, select **Inventory > Storage > Disks**.
- 4 Select a disk.
- 5 From the View drop-down list, select RAID Groups.
 - [Viewing RAID Groups Consumed by an Aggregate](#)

Viewing Aggregates Configured in a NAS Filer

To view the aggregates that are configured in a NAS Filer:

- 1 In the navigation pane, select **Devices > Storage > NAS Filers**.
- 2 In the content pane, select a NAS Filer and then open it.

- 3 In the Views pane, select **Inventory > Storage > Aggregates**.
- 4 From the View drop-down list, select Properties.
 - [Viewing Aggregates Created by a Disk](#)

Viewing Aggregate Properties

To view the properties of an aggregate:

- 1 In the navigation pane, select **Devices > Storage > NAS Filers**.
- 2 In the content pane, select a NAS Filer and then open it.
- 3 In the Views pane, select **Inventory > Storage > Aggregates**.
- 4 From the View drop-down list, select Properties.
- 5 Select an aggregate.
 - [Viewing Filer Volumes Created by an Aggregate](#)

Viewing Filer Volumes Created by an Aggregate

To view the filer volumes that are created by an aggregate:

- 1 In the navigation pane, select **Devices > Storage > NAS Filers**.
- 2 In the content pane, select a NAS Filer and then open it.
- 3 In the Views pane, select **Inventory > Storage > Aggregates**.
- 4 From the View drop-down list, select Volumes.
- 5 Select an aggregate.
 - [Viewing Filer Volumes Configured in a NAS Filer](#)

Viewing Antecedents and Dependents of an Aggregate

To view the antecedent and dependent of the aggregate storage supply chain:

- 1 In the navigation pane, select **Devices > Storage > NAS Filers**.
- 2 In the content pane, select a NAS Filer and then open it.
- 3 In the Views pane, select **Inventory > Storage > Aggregates**.
- 4 Select an aggregate.
- 5 From the View drop-down list, select Composition.
 - [Viewing Antecedents and Dependents of a Volume for a NAS Filer](#)
 - [Viewing Redologs Antecedents and Dependents](#)
 - [Viewing Datafile Antecedents and Dependents](#)
 - [Viewing Tablespace Antecedents and Dependents](#)
 - [Viewing Antecedent of Aggregate Storage Supply Chain](#)

- [Viewing Antecedents and Dependents of Volumes for a Managed Server](#)
- [Viewing the Composition of a Volume](#)

Viewing Plexes Used by an Aggregate

To view the plexes that are used by an aggregate:

- 1 In the navigation pane, select **Devices > Storage > NAS Filers**.
- 2 In the content pane, select a NAS Filer and then open it.
- 3 In the Views pane, select **Inventory > Storage > Aggregates**.
- 4 Select an aggregate.
- 5 From the View drop-down list, select Plexes.
 - [Viewing Plexes on a Disk](#)

Viewing RAID Groups Consumed by an Aggregate

To view the RAID groups that are consumed by an aggregate:

- 1 In the navigation pane, select **Devices > Storage > NAS Filers**.
- 2 In the content pane, select a NAS Filer and then open it.
- 3 In the Views pane, select **Inventory > Storage > Aggregates**.
- 4 Select an aggregate.
- 5 From the View drop-down list, select RAID Groups.
 - [Viewing RAID Groups on a Disk](#)

Viewing Filer Volumes Configured in a NAS Filer

To view the filer volumes that are configured in a NAS Filer:

- 1 In the navigation pane, select **Devices > Storage > NAS Filers**.
- 2 In the content pane, select a NAS Filer and then open it.
- 3 In the Views pane, select **Inventory > Storage > Volumes**.
- 4 From the View drop-down list, select Properties.
 - [Viewing Filer Volumes Created by a Disk](#)
 - [Viewing Filer Volumes Created by an Aggregate](#)
 - [Viewing Volumes Configured for a vFiler](#)

Viewing Filer Volume Properties

To view the properties of a filer volume:

- 1 In the navigation pane, select **Devices > Storage > NAS Filers**.

- 2 In the content pane, select a NAS Filer and then open it.
- 3 In the Views pane, select **Inventory > Storage > Volumes**.
- 4 From the View drop-down list, select Properties.
- 5 In the content pane, select a filer volume.
 - [Viewing Filer Volumes Configured in a NAS Filer](#)

Viewing Antecedents and Dependents of a Volume for a NAS Filer

To view the antecedent and dependent of a volume storage supply chain:

- 1 In the navigation pane, select **Devices > Storage > NAS Filers**.
- 2 In the content pane, select a NAS Filer and then open it.
- 3 In the Views pane, select **Inventory > Storage > Volumes**.
- 4 Select a volume.
- 5 From the View drop-down list, select Composition.
 - [Viewing Antecedents and Dependents of an Aggregate](#)
 - [Viewing Redologs Antecedents and Dependents](#)
 - [Viewing Datafile Antecedents and Dependents](#)
 - [Viewing Tablespace Antecedents and Dependents](#)
 - [Viewing Antecedents and Dependents of Volumes for a Managed Server](#)
 - [Viewing Antecedent of Aggregate Storage Supply Chain](#)
 - [Viewing the Composition of a Volume](#)

Viewing Qtrees Created in a Volume

To view the Qtrees that are created in a volume:

- 1 In the navigation pane, select **Devices > Storage > NAS Filers**.
- 2 In the content pane, select a NAS Filer and then open it.
- 3 In the Views pane, select **Inventory > Storage > Volumes**.
- 4 Select a volume.
- 5 From the View drop-down list, select Qtree.
 - [Viewing Quota Created at the Volume or Qtree](#)

Viewing Quota Created at the Volume or Qtree

To view the quota that is created at the volume or the Qtree for a volume:

- 1 In the navigation pane, select **Devices > Storage > NAS Filers**.
- 2 In the content pane, select a NAS Filer and then open it.
- 3 In the Views pane, select **Inventory > Storage > Volumes**.
- 4 Select a volume.
- 5 From the View drop-down list, select Quota.



A disk quota is a set of rules that restrict disk space and the number of files used by a user or a group. A quota can also restrict the total space and files used in a Qtree or the usage of users and groups within a Qtree. For example, you could create a user quota that specifies that a particular user can use up to 225MB of disk space in a given Qtree in a given volume before a warning is issued (soft limit) and up to 250MB maximum (hard limit).

- [Viewing Qtrees Created in a Volume](#)

Viewing Exports for a Volume

To view the exports for a volume:

- 1 In the navigation pane, select **Devices > Storage > NAS Filers**.
- 2 In the content pane, select a NAS Filer and then open it.
- 3 In the Views pane, select **Inventory > Storage > Volumes**.
- 4 Select a volume.
- 5 From the View drop-down list, select Exports.

- [Viewing Exports for a vFiler](#)

Oracle Database Assets

This feature provides visibility into the Oracle storage configurations in a SAN or Network Attached Storage (NAS). These configurations include physical entities, such as fabric switches and SAN Arrays.


A database administrator can view the following:

- Oracle database storage configuration
- System resources available to the Oracle databases in one or more servers in a data center
- Servers and SAN Storage devices connected to the FC network
- Storage resources shared between Oracle Instances and/or hosts
- Network Attached Storage (NAS) resources that the Oracle Databases depends on

Storage Visibility and Automation provides the following Oracle database storage configuration in a SAN or NAS:

Oracle Instance—Storage-related information for the Oracle Instance. Storage Visibility and Automation collects the version of the Oracle database that is running the Oracle instance.


Storage Elements—Storage elements configured for an Oracle instance can be classified as physical database storage and logical database storage. *Physical database storage* includes data files and redo logs that directly consume system storage resources, such as file systems and partitions. *Logical database storage* includes entities such as tablespaces that are created inside the instance that is consuming different physical and logical storage entities.

Data Files  —The file path, allocated space, and space used for each data file. Oracle data files can reside directly on the file system or they can utilize raw partitions.

- **Based on File System**—Data files can be created directly in a file system and specified to the Oracle database. Storage Visibility and Automation collect information about the file path of the data file. HP uses this information to calculate the file system that is consumed by the data file.
- **Based on Raw Partition**—Storage Visibility and Automation collects partition information. HP uses this information to calculate the storage supply chain that is consumed by the data file.
- **Based on ASM Files**—For this use case, the storage supply chain includes the following elements: ASM File, ASM Diskgroup, and ASMDisk(s). ASMDisk(s) are created on raw disk partitions, Logical Unit Numbers (LUNs), raw logical volumes (LVM), or NFS files.

Redo Logs—Redo logs information for the Oracle instance, such as file path and allocated space for the redo log.

Logical Database Storage—Storage-related information for the tablespace and its association to the physical storage entities. Storage Visibility and Automation does not collect storage entities, such as data segments, extents, data block, schema, table, and index.

Tablespaces  —Storage Visibility and Automation collects tablespace information for each Oracle instance, such as the status, allocated space, and space used for each of the tablespaces.

Automatic Storage Management (ASM)—Storage configuration and utilization of the Oracle database. ASM helps manage volumes that might be composed of block-based devices (SAN) or file-based devices (NFS), with additional data replication inside ASM.

- [Database Assets and Relationships](#)

Database Assets and Relationships

Storage Visibility and Automation displays information about relationships between the database elements and other storage asset discovery features. See [Table 9](#).

table 9 Database Assets and Relationships

Database Asset	External Element	Description
SAN-based physical database storage	Block storage dependency	Provides the dependency chain between the database storage elements and SAN arrays through System (server) resources and fabric.
NAS-based physical database storage	NAS storage dependency	Provides the dependency chain between the database storage elements, Server resources and NetApp.

- [Frequently Asked Questions](#)

Frequently Asked Questions

Table 10 answers some frequently asked questions on finding information about Oracle database assets.

table 10 Frequently Asked Questions About Database Assets

	Question	How to Find the Answer
1.	What are the storage resources used by an Oracle instance?	<ul style="list-style-type: none"> • Viewing Tablespaces Configured in the Oracle Instance on page 63 • Viewing Tablespace Antecedents and Dependents on page 64 • Viewing Storage Supply Chain Connectivity of the Tablespace on page 64
2.	What is the FC SAN network configuration that an Oracle database depends on?	<ul style="list-style-type: none"> • Viewing Storage Supply Chain Connectivity of the Tablespace on page 64
3.	Are critical Oracle instances configured for high availability, such as multiple access paths? What are the redundant paths between a server and a storage array for an Oracle instance?	<ul style="list-style-type: none"> • Viewing Storage Supply Chain Connectivity of the Tablespace on page 64 • SAN Map on page 77 • Storage Map on page 77
4.	What is the storage utilization of an Oracle instance?	<ul style="list-style-type: none"> • Viewing Properties of the Oracle Instance on page 63
5.	Is Oracle-consumed storage on a remote SAN array configured for replication?	<ul style="list-style-type: none"> • Viewing Storage Supply Chain Connectivity of the Tablespace on page 64 • Viewing Utilized Targets on page 69

table 10 Frequently Asked Questions About Database Assets (cont'd)

	Question	How to Find the Answer
6.	What is causing Oracle instance performance degradation? How is all of the SAN configuration impacting the Oracle instance? What are the shared resources between Oracle instances?	<ul style="list-style-type: none"> • Viewing Storage Volumes with Access Paths for Remote Initiators on page 40 • Viewing the Access Path from the Volume on page 44 • Viewing Storage Supply Chain Connectivity of the Tablespace on page 64
7.	Does the SAN provide room for growth?	<ul style="list-style-type: none"> • Viewing Storage Supply Chain Connectivity of the Tablespace on page 64 • Viewing Utilized Fabrics on page 68 • Viewing Utilized Switches on page 68 • Viewing Utilized Targets on page 69
8.	What are the NAS (Network Attached Storage) resources used by an Oracle instance?	<ul style="list-style-type: none"> • Viewing Storage Supply Chain Connectivity of the Tablespace on page 64 • Viewing Utilized Targets on page 69

Viewing Databases

To view databases discovered by the Database Scanner for Oracle:

- 1 In the navigation pane, select **Library > Databases**.
- 2 From the View drop-down list, select Properties.
- 3 In the content pane, select the database. The content pane displays a list of databases.
- 4 *(Optional)* Select a target and then select one of the following options from the Actions menu:
 - **Open**—Opens the Database Browser with the selected view.
 - **Rename (F2)**—Provides an editable field to rename the database directly in the table. The command is enabled only if the user has permissions.
 - **Delete**—Removes the database from the Model Repository. This command is enabled only if you have permission. This command does not remove the login credentials for the Database Scanner for Oracle.
 - [Viewing Properties of the Oracle Instance](#)
 - [Viewing the Database History Log](#)

Viewing Database Storage Configurations

To view database storage configurations:

- 1 In the navigation pane, select **Library > Databases**.
- 2 From the View drop-down list, select Properties.
- 3 In the content pane, select the database and then double-click or right-click to open it.
- 4 In the Views pane, select **Inventory > Redlogs**. The content pane displays configuration information.
 - [Viewing Databases](#)
 - [Viewing the Database History Log](#)

Viewing Properties of the Oracle Instance

To view the properties of the Oracle instance:

- 1 In the navigation pane, select **Library > Databases**.
- 2 From the View drop-down list, select Properties.
- 3 In the content pane, select the database and then double-click or right-click to open it. The content pane displays the properties of the selected database.

Important to Know

File > Save—This action is enabled when the name or description is edited. This saves the changes to the system.

File > Revert—This action is enabled when the name or description is edited. This reverts the changes to the previous settings.

- [Viewing Databases](#)
- [Viewing the Database History Log](#)

Viewing Tablespaces Configured in the Oracle Instance

To view tablespaces configured in the Oracle instance:

- 1 In the navigation pane, select **Library > Databases**.
- 2 From the View drop-down list, select Properties.
- 3 In the content pane, select the database and then double-click or right-click to open it.
- 4 In the navigation pane, select **Inventory**.
- 5 From the Views pane, select **> Tablespaces**. The content pane displays a list of tablespaces.
 - [Viewing Tablespace Properties](#)

Viewing Tablespace Properties

To view tablespace properties:

- 1 In the navigation pane, select **Library > Databases**.
- 2 From the View drop-down list, select Properties.
- 3 In the content pane, select the database and then double-click or right-click to open it.
- 4 In the navigation pane, select **Inventory**.
- 5 In the Views pane, select **> Tablespaces**.
- 6 In the content pane, select a tablespace and then review the lower part of the content pane for the properties.
 - [Viewing Tablespaces Configured in the Oracle Instance](#)

Viewing Tablespace Antecedents and Dependents

To view antecedents and dependents of a tablespace:

- 1 In the navigation pane, select **Library > Databases**.
- 2 From the View drop-down list, select Properties.
- 3 In the content pane, select the database and then double-click or right-click to open it.
- 4 In the View command, select **Inventory > Tablespaces**.
- 5 In the content pane, select a tablespace and then review the lower part of the content pane.
- 6 From the View drop-down list, select Composition. The content pane displays the composition.
- 7 *(Optional)* Select a target and then select the following option from the Actions menu:
 - **Open**—Opens the SAN Array, Server Storage, or NAS Filer view.
 - [Viewing Antecedents and Dependents of an Aggregate](#)
 - [Viewing Antecedents and Dependents of a Volume for a NAS Filer](#)
 - [Viewing Redologs Antecedents and Dependents](#)
 - [Viewing Datafile Antecedents and Dependents](#)
 - [Viewing Antecedent of Aggregate Storage Supply Chain](#)
 - [Viewing Antecedents and Dependents of Volumes for a Managed Server](#)
 - [Viewing the Composition of a Volume](#)

Viewing Storage Supply Chain Connectivity of the Tablespace

To view the connectivity of the database storage element:

- 1 In the navigation pane, select **Library > Databases**.
- 2 From the View drop-down list, select Properties.
- 3 In the content pane, select the database and then double-click or right-click to open it.

- 4 In the Views pane, select **Inventory > Tablespaces**.
- 5 In the content pane, select a tablespace and then review the lower part of the content pane.
- 6 From the View drop-down list, select Connectivity. The content pane displays the connectivity.
 - [Viewing Datafile Connectivity](#)
 - [Viewing Redologs Connectivity](#)
 - [Viewing Volume Connectivity](#)

Viewing Redo Logs

To view the redo logs:

- 1 In the navigation pane, select **Library > Databases**.
- 2 From the View drop-down list, select Properties.
- 3 In the content pane, select the database and then double-click or right-click to open it.
- 4 In the Views pane, select **Inventory > Redologs**. The content pane displays the information.
 - [Viewing Tablespaces Configured in the Oracle Instance](#)
 - [Viewing Datafiles](#)

Viewing Redo Log Properties

To view properties of a redo log:

- 1 In the navigation pane, select **Library > Databases**.
- 2 From the View drop-down list, select Properties.
- 3 In the content pane, select the database and then double-click or right-click to open it.
- 4 In the Views pane, select **Inventory > Redologs**.
- 5 In the content pane, select a redo log, then review the lower part of the content pane for the properties.
 - [Viewing Datafile Properties](#)

Viewing Redologs Antecedents and Dependents

To view the composition of the redo logs:

- 1 In the navigation pane, select **Library > Databases**.
- 2 From the View drop-down list, select Properties.
- 3 In the content pane, select the database and then double-click or right-click to open it.
- 4 In the Views pane, select **Inventory > Redologs**.
- 5 From the View drop-down list, select Composition.
- 6 In the content pane, select a redo log and then review the lower part of the content pane for the composition.

- 7 (Optional) Select a target and then select the following option from the Actions menu:
 - **Open**—Opens the SAN Array, Server Storage, or NAS Filer view.
 - [Viewing Antecedents and Dependents of an Aggregate](#)
 - [Viewing Antecedents and Dependents of a Volume for a NAS Filer](#)
 - [Viewing Tablespace Antecedents and Dependents](#)
 - [Viewing Datafile Antecedents and Dependents](#)
 - [Viewing Antecedent of Aggregate Storage Supply Chain](#)
 - [Viewing Antecedents and Dependents of Volumes for a Managed Server](#)
 - [Viewing the Composition of a Volume](#)

Viewing Redologs Connectivity

To view the connectivity of the database storage element:

- 1 In the navigation pane, select **Library > Databases**.
- 2 From the View drop-down list, select Properties.
- 3 In the content pane, select the database and then open it.
- 4 In the Views pane, select **Inventory > Redologs**.
- 5 In the content pane, select a redolog and then review the lower part of the content pane.
- 6 From the View drop-down list, select Connectivity. The content pane displays the connectivity.
 - [Viewing Storage Supply Chain Connectivity of the Tablespace](#)
 - [Viewing Datafile Connectivity](#)
 - [Viewing Volume Connectivity](#)
 - [Viewing the Connectivity of a Volume](#)

Viewing Datafiles

To view the datafiles:

- 1 In the navigation pane, select **Library > Databases**.
- 2 From the View drop-down list, select Properties.
- 3 In the content pane, select the database and then double-click or right-click to open it.
- 4 In the Views pane, select **Inventory > Datafiles**. The content pane displays a list of datafiles.
 - [Viewing Redo Logs](#)

Viewing Datafile Properties

To view the properties of a datafile:

- 1 In the navigation pane, select **Library > Databases**.
- 2 From the View drop-down list, select Properties.
- 3 In the content pane, select the database and then double-click or right-click to open it.
- 4 In the Views pane, select **Inventory > Datafiles**.
- 5 From the View drop-down list, select Properties. The content pane displays the properties.
- 6 In the content pane, select a datafile and then review the lower part of the content pane.
 - [Viewing Redo Log Properties](#)

Viewing Datafile Antecedents and Dependents

To view the composition of the datafiles:

- 1 In the navigation pane, select **Library > Databases**.
- 2 From the View drop-down list, select Properties.
- 3 In the content pane, select the database and then double-click or right-click to open it.
- 4 In the Views pane, select **Inventory > Datafiles**.
- 5 From the View drop-down list, select Composition.
- 6 In the content pane, select a datafile, then review the lower part of the content pane for the composition.
- 7 *(Optional)* Select a target and then select the **Open** option from the Actions menu, which opens the SAN Array, Server Storage, or NAS Filer view.
 - [Viewing Antecedents and Dependents of an Aggregate](#)
 - [Viewing Antecedents and Dependents of a Volume for a NAS Filer](#)
 - [Viewing Tablespace Antecedents and Dependents](#)
 - [Viewing Redologs Antecedents and Dependents](#)
 - [Viewing Antecedent of Aggregate Storage Supply Chain](#)
 - [Viewing Antecedents and Dependents of Volumes for a Managed Server](#)
 - [Viewing the Composition of a Volume](#)

Viewing Datafile Connectivity

To view the connectivity of the database storage element:

- 1 In the navigation pane, select **Library > Databases**.
- 2 From the View drop-down list, select Properties.
- 3 In the content pane, select the database and then double-click or right-click to open it.
- 4 In the Views pane, select **Inventory > Datafiles**.

- 5 In the content pane, select a datafile and then review the lower part of the content pane.
- 6 From the View drop-down list, select Connectivity. The content pane displays the connectivity.
 - [Viewing Storage Supply Chain Connectivity of the Tablespace](#)
 - [Viewing Redologs Connectivity](#)

Viewing Servers Hosting a Database

To view servers hosting a database:

- 1 In the navigation pane, select **Library > Databases**.
- 2 From the View drop-down list, select Properties.
- 3 In the content pane, select the database and then double-click or right-click to open it.
- 4 In the Views pane, select **Relationships > Servers**. The content pane displays a list of servers.
- 5 *(Optional)* Select a target and then select one of the following options from the Actions menu:
 - **Open**—Opens the Device Explorer.

▶ The column in this panel is the same as the main panel for the server rendered in the All Managed Servers feature. All columns are not described above.

- [Viewing Utilized Fabrics](#)
- [Viewing Utilized Switches](#)
- [Viewing Utilized Targets](#)

Viewing Utilized Fabrics

To view utilized fabrics:

- 1 In the navigation pane, select **Library > Databases**.
- 2 From the View drop-down list, select Properties.
- 3 In the content pane, select the database and then double-click or right-click to open it.
- 4 In the Views pane, select **Relationships > SAN Fabrics**. The content pane displays a list of fabrics.
 - [Viewing Servers Hosting a Database](#)
 - [Viewing Utilized Switches](#)
 - [Viewing Utilized Targets](#)

Viewing Utilized Switches

To view utilized switches:

- 1 In the navigation pane, select **Library > Databases**.
- 2 From the View drop-down list, select Properties.
- 3 In the content pane, select the database and then double-click or right-click to open it.

- 4 In the Views pane, select **Relationships > SAN Switches**. The content pane displays a list of switches.
 - [Viewing Servers Hosting a Database](#)
 - [Viewing Utilized Fabrics](#)
 - [Viewing Utilized Targets](#)

Viewing Utilized Targets

To view utilized targets:

- 1 In the navigation pane, select **Library > Databases**.
- 2 From the View drop-down list, select Properties.
- 3 In the content pane, select the database and then double-click or right-click to open it.
- 4 In the Views pane, select **Relationships > SAN Arrays**. The content pane displays a list of targets.
- 5 *(Optional)* Select a target and then select one of the following options from the Actions menu:
 - **Open**—Opens the SAN Array Browser.



The column in this panel is the same as the main panel for the arrays rendered in the SAN Array feature. All columns are not described above.

- [Viewing Servers Hosting a Database](#)
- [Viewing Utilized Fabrics](#)
- [Viewing Utilized Switches](#)

Viewing the Database History Log

To view the history log:

- 1 In the navigation pane, select **Library > Databases**.
- 2 From the View drop-down list, select History.
- 3 In the content pane, select the database and then double-click or right-click to open it. The content pane displays the history log.
- 4 *(Optional)* Select a target and then select the following option from the Actions menu:
 - **View Event Details**—Displays the detailed information for the event.
 - [Viewing the NAS Filer History Log](#)
 - [Viewing the SAN Array History Log](#)
 - [Viewing Databases](#)
 - [Viewing Database Storage Configurations](#)

Device Group Assets

The Device Groups feature in Storage Visibility and Automation provides a useful way for gathering storage devices into collections. Grouping storage devices enables you to view all of the devices simultaneously, instead of viewing individual devices, one at a time.

This feature allows you to include storage devices in a device group and view a history of events for a device group. You can view detailed storage device history, such as information in snapshot messages from the synchronization process. Device groups and a history log can help you troubleshoot problems.

The Device Groups feature in Storage Visibility and Automation is modeled after the Device Groups feature in SA. See the *SA User Guide: Server Automation* for more information about managing device groups.

You can create the following types of storage device groups:

- **Static Device Group**—This group contains heterogeneous storage devices, such as any combination of servers, storage arrays, and NetApp filers.
- **Dynamic Device Group**—This group contains a homogeneous set of storage devices, such as servers or storage systems (SAN Arrays and NAS filers). A dynamic device group contains only one type of storage device because it is generated based on device properties. A dynamic device group cannot contain a combination of different types of storage devices.

See the *SA User Guide: Server Automation* for information about adding a server to a static or dynamic device group.

- [Static Device Groups](#)
- [Dynamic Device Groups](#)
- [Device History Log](#)

Static Device Groups

Static storage device groups can contain heterogeneous devices—one or more SAN arrays, NAS filers, and managed servers.

Creating a Static Device Group

To create a static device group:

- 1 In the navigation pane, select **Device Groups > Public**.
- 2 From the **Actions** menu, select **Device Group > New Static Group**.
- 3 Enter a new name for the static device group that you just created. Click outside the name field to save it. The default name is New Device Group.

Adding a Device to a Static Device Group

To add a storage device to a static device group:

- 1 In the Device Group Browser, select the device group.
- 2 From the Actions menu, select **Open** to display the Group Browser.
- 3 In the Views pane, select Device Membership.

- 4 In the Device Membership window, from the Actions menu, select **Add**.
- 5 In the Add Members to Static Group dialog, select one or more members, such as such as any combination of servers, storage arrays, and NetApp filers.
- 6 Click **Add to Group**.

Removing a Device from a Static Device Group

To remove a storage device from a static device group:

- 1 In the Static Device Group window, select one or more storage devices.
- 2 From the Actions menu, select **Remove Members**.
 - [Device History Log](#)
 - [Dynamic Device Groups](#)

Dynamic Device Groups

Dynamic storage device groups can contain only homogeneous devices—one or more storage systems (SAN arrays and NAS filers), and managed servers.

Creating a Dynamic Device Group




To create a dynamic device group:

- 1 In the navigation pane, select **Device Groups > Public**.
- 2 From the **Actions** menu, select **Device Group > New Dynamic Group**
- 3 Enter a new name for the dynamic device group that you just created.
- 4 Press enter to save it. The default name is New Device Group plus an incremental number, such as New Device Group 4.

Adding a Device to a Dynamic Device Group

To add a storage device to a dynamic device group:

- 1 In the Device Group Browser, select the device group.
- 2 From the Actions menu, select **Open** to display the Group Browser.
- 3 In the Views pane, select Device Membership.
- 4 In the Content pane, specify the rules for the dynamic storage device group.
- 5 From the first drop-down list, select Server or Storage Systems. Depending on the attribute you select, options available for the operator and values for the rule will change. The default is Storage Systems.
- 6 From the second drop-down, select Facility Name, Manufacturer, Model, Name, Object ID, Port, RAID Type, or Serial Number. The default is Manufacturer.
- 7 Select the operator from the third drop-down list. The default is Contains.

- 8 Enter a value in the field, or select a value from the drop-down list, or click  to select multiple values from the Select Values window.
- 9 Click  to add additional rules and repeat steps 4 through 6. Click  to delete any rules.
- 10 Select the logic (And/Or) to be applied for every rule in the query.
- 11 Click **Preview** to view the storage devices that matched the rule—the rule that defines members of the dynamic device group.
- 12 From the **File** menu, click **Save** to save the rules.

Editing a Rule for a Dynamic Device Group

To change a rule for a dynamic device group:

- 1 Open the Group Browser and then select a dynamic device group.
- 2 In the Device Membership window, change the rule and then save it.
 - [Device History Log](#)
 - [Static Device Groups](#)

Device History Log

A history of events for a storage device group can help you troubleshoot problems.

Viewing the History Log

To view the history log for a device group:

- 1 Open a storage device group.
- 2 In the Views pane, select **History**.
- 3 From the View drop-down list, select the time period for the history log.
- 4 *(Optional)* Right-click an event to open the Event Details dialog.
- 5 *(Optional)* Click **Export** to export the history log to a file, such as .csv or .html.

2 Storage Compliance

The storage compliance feature provides visibility into storage configurations in a managed server or device group by allowing you to specify audit rules that check initiator ports connected to multiple ports, FCAs, LUNs (available but not mounted), RAID levels, SAN storage, and so on.

- ▶ Storage audit rules are run against data in the Model Repository.

Audit Rules, Schedule, and Results

The storage compliance feature provides visibility into storage configurations in a managed server or device group by allowing you to specify audit rules that check initiator ports connected to multiple ports, FCAs, LUNs available but not mounted, RAID levels, SAN storage, and so on. Storage audit rules are run against data in the Model Repository.

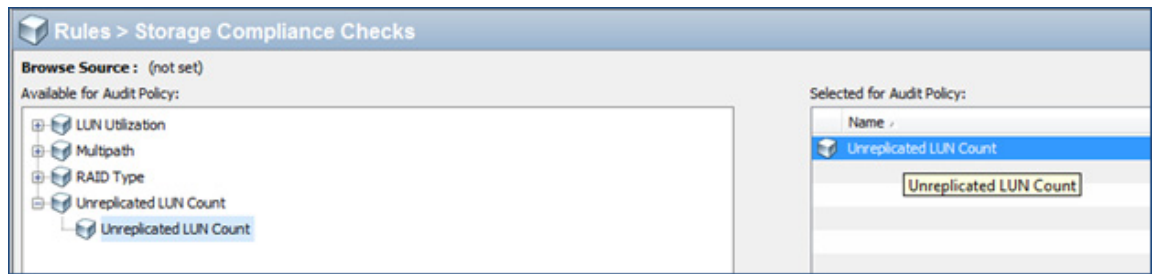
The following table lists the audit rules and parameters for storage compliance. These rules allow you to define the check for minimum, maximum, or exact numbers. The compliance rules that involve ports, switches, or fabrics, check active ports only. These types of compliance rules do not check for physical port connectivity.

Storage Audit Rules	Storage Parameter
Unmounted Volume Capacity	Acceptable total capacity of unmounted volumes in bytes
Unmounted Volume Count	Acceptable number of unmounted volumes
Fabrics	Acceptable number of fabrics
FCA	Acceptable number of Fibre Channel Adapters (FCAs)
Initiator Ports	Acceptable number of ports
Switches	Acceptable number of switches
Target Ports	Acceptable number of ports
RAID Type	Acceptable RAID types on the target storage array Note: The audit will fail if this rule is selected and no RAID type is specified
Unreplicated LUN count	Acceptable number of Unreplicated LUN count

- ▶ The compliance rules that involve ports, switches, or fabrics, check active ports only. These types of compliance rules do not check for physical port connectivity.

Audit Browser

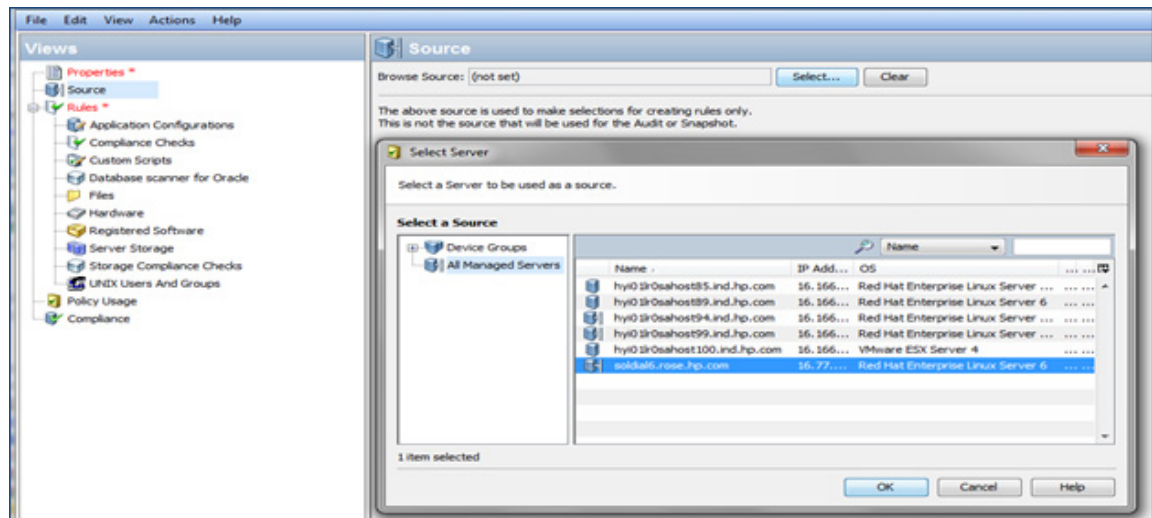
The Audit Browser shows storage rules selected in an audit.



The figure also shows an unreplicated LUN count choice in the Source list under **Rules > Storage Compliance Checks**. See the *SA User Guide: Audit & Compliance* for information about specifying rule details.

Select Server

This section describes how to select a server to use as an audit target.



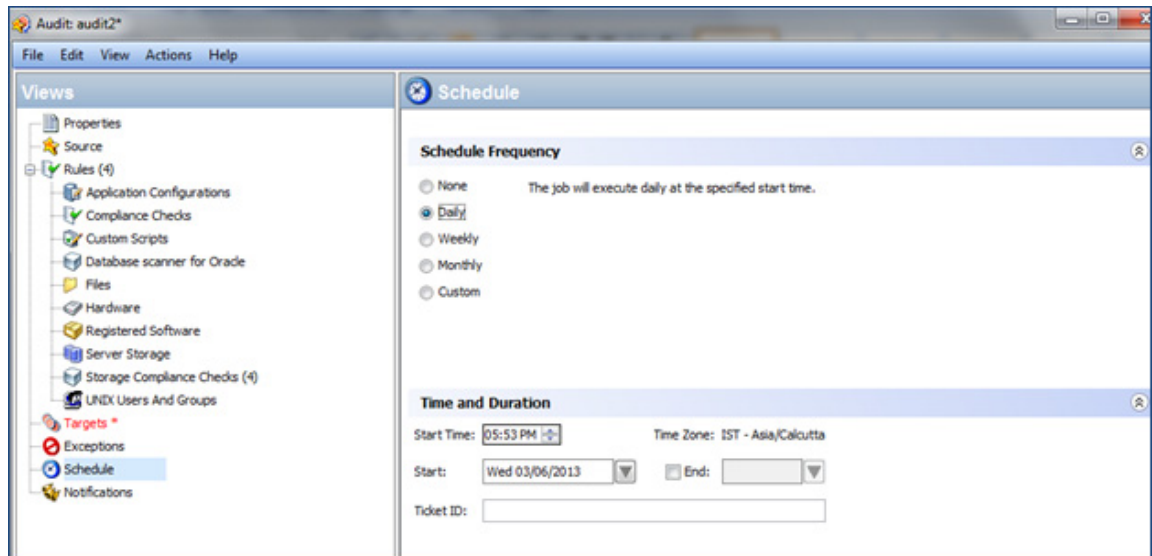
- 1 In the Source window, choose Servers and Device Groups.
- 2 In the Select Server window, Select a Source tree, choose All Managed Servers.
- 3 Select the server to use as an audit target.

See the *User Guide: Audit and Compliance* for information about adding audit targets.

Audit Schedule

To schedule an audit:

- 1 In the Views section, choose Schedule.



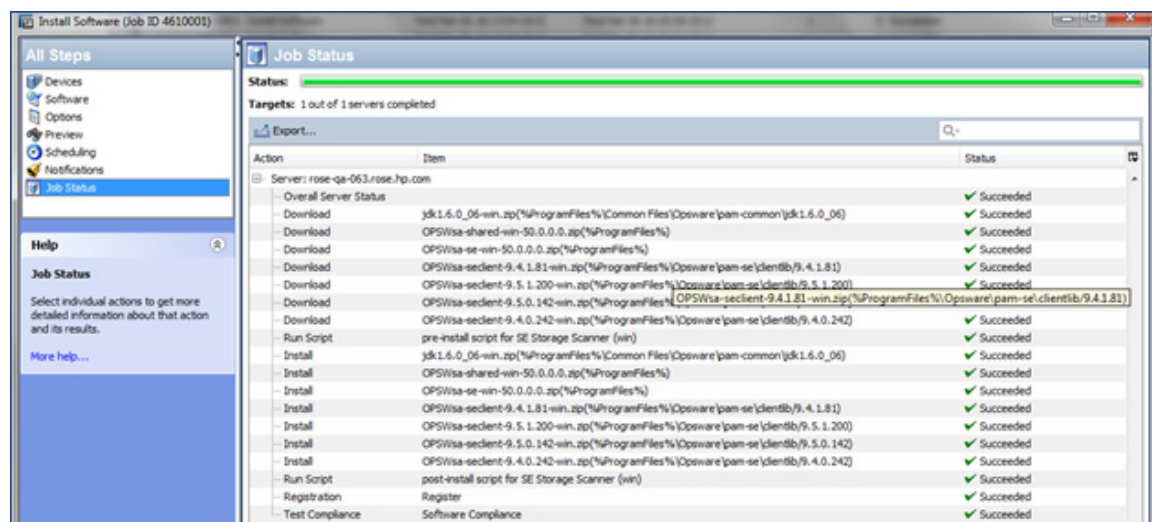
- 2 In the Schedule section, choose the schedule frequency, schedule time, and schedule duration.

See the *User Guide: Audit and Compliance* for more information about scheduling audits.

Audit Summary

To display a summary of audit results:

- 1 In the Install Software screen, in the All Steps section, choose Job Status.

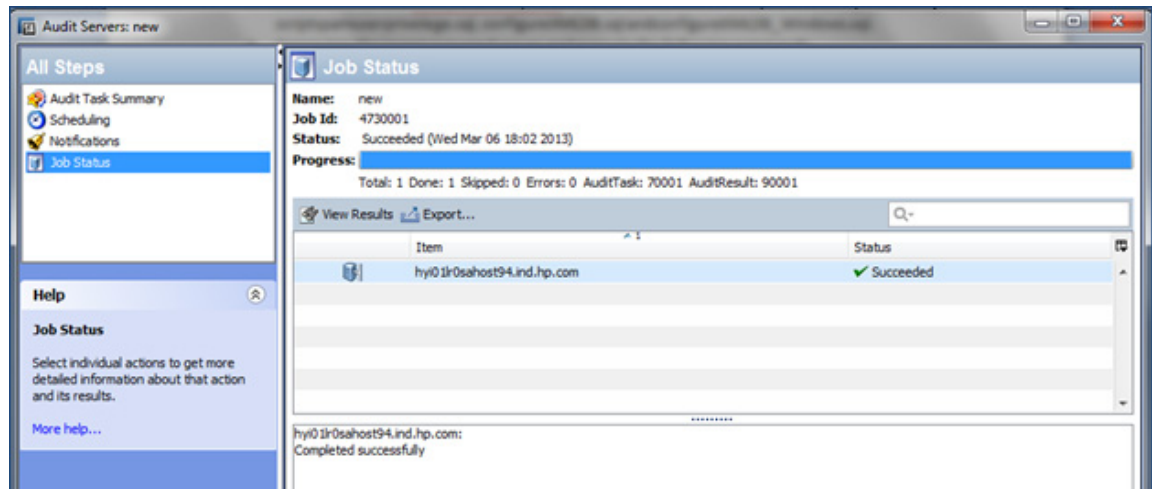


- 2 The Job Status section shows each server's audit results. View server audit results by expanding the Server: <server name>. The STATUS column shows the status of the installed components.

Storage Compliance Checks

To view storage compliance checks:

- 1 In the Audit Servers: New screen, All Steps section, choose Job Status.



- 2 In the Job Status section, choose a server.

The Job Status section shows the status of the audits, which are run on any managed server. The STATUS column shows the status of the audit, as either *Succeeded* or *Failed*.

3 Storage Visualization

Overview of Service Automation Visualizer

The Service Automation Visualizer (SAV) feature in Server Automation (SA) allows you to visualize logical storage dependencies and physical storage connections in your data center. SAV displays how these dependencies and connections relate to your business applications in mapping diagrams. These diagrams map out the storage supply chain from servers to spindles—how servers map to the storage devices they are connected to. SAV diagrams also show file systems and their relationships to local and remote storage, FC adapters, FC switches (physical and virtual), connections and ports, disk arrays, NAS filers, LUN mappings, RAID configurations, SAN fabrics, and so on.

- ☑ Storage Essentials (SE) version 6.1.1 or later is required to view, report, or perform any Service Automation Visualizer (SAV) and Service Automation Reporter (SAR) operation on SAN objects, such as arrays, switches, volumes, and so on. SAN objects are discovered in Storage Essentials. To enable discovered SAN objects in the SA, SAV, and SAR products, the Server Automation SE Connector component must be installed and configured.

For more information about SAV, see the *SA User Guide: Application Automation*.

Storage Mapping Features

SAV provides visual maps that display physical and logical drawings of storage devices and connections in your environment—in a Storage Map and a SAN map.

SAN Map

The SAN map shows a superset of the Storage Map, including a graphical view of the SAN involved in a SAV snapshot, all servers and their FCAs (including fibre channel ports), and each adapter's connections to switches in the SAN.

Storage Map

The Storage Map displays storage dependencies for servers, FCAs, NAS filers, SAN arrays, fabrics, switches, ports, and so on, that you have scanned with SAV. This map provides a graphical view that displays servers, the process families running on them, including the file systems and local or remote storage devices these files are stored on and served from, either through local disks, NAS filers, or remote disk arrays. The map shows connections between process families and their open files and where the files are stored.

4 SE Connector

SE Connector is the Storage Scanner that collects data from Storage Essentials (SE) about SAN elements and inventory, and their connectivity. These SAN elements include storage arrays, fabrics, switches, and NAS filers.

The frequency of collecting this storage data is configured by the user. By default, SE Connector collects SAN information from SE once every 12 hours. This action is commonly known as *a scheduled full synchronization*. You can adjust the collection frequency by modifying a setting in SE. In SE Connector, you can specify the maximum wait time (in minutes) for a scheduled full synchronization when the Get All Elements Details (GAED) process in SE is in progress. The following property specifies the maximum default wait time for a scheduled full synchronization task when GAED is in progress:

```
com.creeppath.agent.common.devices.scheduled.full.sync.max.wait.minutes=10080
```

SE Connector will check SE every 3 minutes (by default) and will run the collection if the SE GAED process finishes sooner or if SE Connector has waited longer than the specified interval.



SE Connector can communicate with multiple Storage Essentials instances. For scalability and performance reasons, it is recommended that you have *multiple* SE Connectors communicating to *one* instance of Storage Essentials; however, each Access Control must be configured to collect a unique set of devices from the same Storage Essentials instance. You can also have *multiple* SE Connectors communicating with *multiple* instances Storage Essentials.

Since, by default, storage information is collected from SE once every 12 hours, you might need updated data more frequently than twice a day. You can modify this data collection frequency by modifying a setting in SE. See the *Storage Essentials SRM Software User Guide* for information about configuring the schedule for data collection. You can also request an update of SAN information from SE at the storage device level, such as arrays and NetApp filers. See [Update from Storage Essentials](#) on page 84 for more information.

A “GAED IN PROGRESS” value in the Status column on the Storage Scanner Storage Essentials panel indicates that a Get All Elements Details (GAED) discovery process is currently running on the Storage Essentials server.

When Storage Essentials is processing GAED, by default SE Connector will wait 10080 minutes (7days) before it will proceed to collect data from Storage Essentials, even though a GAED discovery process is still running. SE Connector will check SE every 3 minutes (by default) and will run the collection if the SE GAED process finishes sooner or the SE Connector has waited longer than the interval configured for “Full Data Collection Minutes” in SEPlugin.Properties.

Check the Storage Essentials (connection) Status to determine whether the GAED process is still running. Check the Last Scan timestamp for Managed Elements for that Storage Essentials instance to determine when SE Connector last updated the information for those elements.

The following property specifies the maximum default wait time for a scheduled full data collection task when GAED is in progress:

```
com.creeppath.agent.common.devices.full.data.collection.minutes=720
```

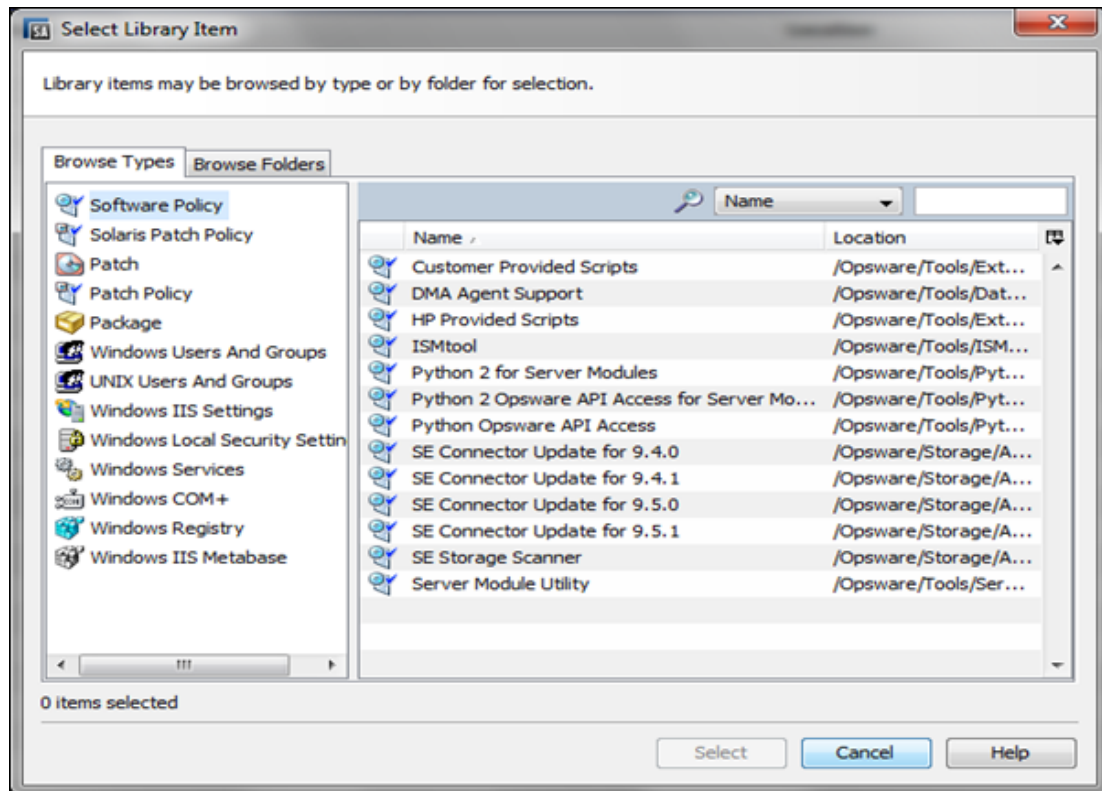
The following describes a typical use case:

- You configure SE Connector to collect information from Storage Essentials once a day.
- Storage Essentials is busy processing GAED for 2 days.

- You do not see updated information for Managed Elements for the Storage Essentials instance in Server Automation.
- You can use a combination of the Storage Essentials connection Status value and Last Scan timestamp for Managed Elements to determine if there is a lengthy GAED process running for SE and the SE Connector is not updating information for those Managed Elements. This explains why information for Managed Elements is not getting updated as per the scheduled frequency.

SE Connector Updates

This section discusses SE Connector updates.



SA 10.0 supports the following SE versions: SE 9.4.0, SE 9.4.1, SE 9.5.0 and SE 9.5.1.



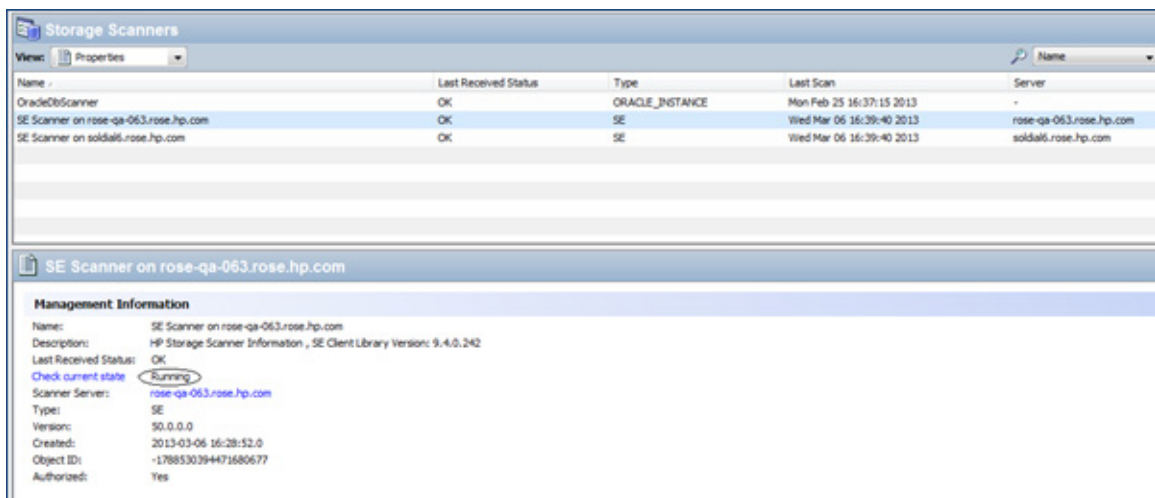
Note: The SA 10.0 release no longer supports SE 6.x for new managed servers. However, SA 6.x is still supported for existing managed servers.

Viewing the Storage Essentials Connection Status

This section discusses how to view the status of the connection to a Storage Essentials server managed by a Storage Scanner.

To view the status of the connection:

- 1 From the navigation pane, select **Administration > Storage Scanners**.
- 2 In the content pane, select an SE Storage Scanner and then open its browser.



- 3 From the Views pane, select **Storage Essentials**.
- 4 Check the Status column.

When you are viewing storage information about a SAN array or NetApp filer in Storage Visibility and Automation and would also like to view storage information for the same SAN array or NetApp filer in Storage Essentials, you can launch Storage Essentials to display the data that was discovered. See information on authorizing a storage scanner in the *Storage Visibility and Automation Installation & Administration Guide*. See the *Storage Essentials SRM Software User Guide* for information about the discovery process in SE.

See storage-scanner information in the *Storage Visibility and Automation Installation & Administration Guide*. for information about managing the SE Connector.

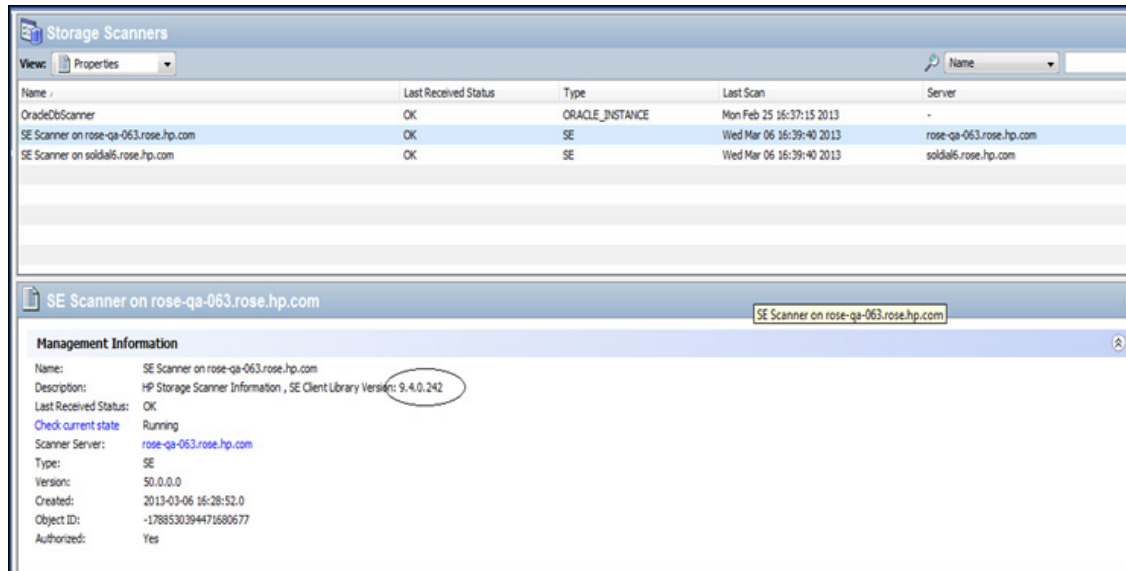
See the *Storage Visibility and Automation Managed Server Support Matrix* for a list of operating systems SE Connector supports.

Viewing the SE Client Library Version Number

The Storage Scanner properties panel includes the SE Client Library Version number. The SE Client Library version number, such as 6.x.x.xx, is displayed in the Description field.

To view the SE Client Library version number:

- 1 From the navigation pane, select **Administration > Storage Scanners**.



The screenshot shows the 'Storage Scanners' management interface. At the top, there is a table with columns: Name, Last Received Status, Type, Last Scan, and Server. The table contains three rows: 'OracleDbScanner', 'SE Scanner on rose-qa-063.rose.hp.com', and 'SE Scanner on solda65.rose.hp.com'. Below the table, the 'SE Scanner on rose-qa-063.rose.hp.com' is selected, and its 'Management Information' panel is displayed. The 'Description' field in this panel is circled, showing the text: 'HP Storage Scanner Information , SE Client Library Version: 9.4.0.242'.

Name	Last Received Status	Type	Last Scan	Server
OracleDbScanner	OK	ORACLE_INSTANCE	Mon Feb 25 16:37:15 2013	-
SE Scanner on rose-qa-063.rose.hp.com	OK	SE	Wed Mar 06 16:39:40 2013	rose-qa-063.rose.hp.com
SE Scanner on solda65.rose.hp.com	OK	SE	Wed Mar 06 16:39:40 2013	solda65.rose.hp.com

Management Information

Name: SE Scanner on rose-qa-063.rose.hp.com
Description: HP Storage Scanner Information , SE Client Library Version: 9.4.0.242
Last Received Status: OK
Check current state: Running
Scanner Server: rose-qa-063.rose.hp.com
Type: SE
Version: 50.0.0.0
Created: 2013-03-06 16:28:52.0
Object ID: -178853039+471680677
Authorized: Yes

- 2 In the content pane, select an SE Storage Scanner.
- 3 From the View drop-down list, select Properties. The SE Client Library Version number is displayed in the Description field, under Management Information.

Access Controls

This section discusses access controls for SE Connector.

- [Viewing Access Controls for SE Connector](#)

Viewing Access Controls for SE Connector

To view access controls for SE Connector:

- 1 In the navigation pane, select **Administration > Storage Scanners**.

- In the content pane, select a Storage Scanner and then select **Actions > Open**.



- In the Views pane, select **Management Console**.
- Expand **SE** and then expand **Access Controls**.
- Select **List** to display the access controls for SE Connector.

Viewing Storage Essentials Servers Managed Elements for SE Connector

To view a list of managed elements discovered by each access control for the SE Connector:

- In the navigation pane, select **Administration > Storage Scanners**.
- In the content pane, open a Storage Scanner.

Name	Last Received Status	Type	Last Scan	Server
OracleDiskScanner	OK	ORACLE_INSTANCE	Mon Feb 25 16:37:15 2013	-
SE Scanner on rose-ga-063.rose.hp.com	OK	SE	Thu Mar 07 11:04:07 2013	rose-ga-063.rose.hp.com
SE Scanner on solda6.rose.hp.com	OK	SE	Thu Mar 07 11:04:17 2013	solda6.rose.hp.com

- In the Views pane, select **Storage Essentials**.
- Select an access control in the right pane. The list of managed elements discovered by that access control displays in the bottom pane.

Update from Storage Essentials



You must have the required SA user permissions to request an “Update from Storage Essentials”. See the section on SA permissions in the *SA Administrators Guide*.

“Update from Storage Essentials” is an option in the Actions menu that requests an update of storage information about an individual storage device, such as a SAN array or NetApp filer. SE Connector provides this synchronization of data for a storage system when you request an update at the device level.

SE Connector does not directly communicate with a storage device to collect data about it. SE Connector collects data about an individual storage device from Storage Essentials. This request copies data from the SE repository into the Model Repository.

You can specify the maximum wait time (in minutes) for the “Update from Storage Essentials” action in SE Connector while SE performs GAED for certain storage elements. The following property specifies the maximum default wait time for the “Update From Storage Essentials” action when GAED is in progress:

```
com.creeppath.agent.common.devices.manual.full.sync.max.wait.minutes=10080
```

The Jobs and Sessions user interface displays the status of the update request. A “Success” status indicates that the Model Repository has been updated. The timestamp for the job also provides the following information about the “Update from Storage Essentials” request:

- When the request was made
- What the status of the update job is, such as:
 - **Succeeded**—Request was submitted successfully. SE Connector collected the data for the requested device and sent it to the Web Services Data Access Engine.
 - **Error**—Request could not be submitted. Verify that the SE Connector is running and start it if it is stopped. If there is still a problem, check the SE Connector logs on the managed server to troubleshoot this error. Begin with the `pam-0-0.trace` log file and then check other trace files.

See the *SA User Guide: Server Automation* for more information about Jobs and Sessions.

Open with Storage Essentials (Click & Launch)

“Open with Storage Essentials” is an option in the Actions menu that launches Storage Essentials for an individual storage device, such as a SAN array or NetApp filer. You can also launch Storage Essentials for a device by selecting it and then by right-clicking—this is commonly referred to as the *Click & Launch* user interface.

SE Connector supports Click & Launch for storage devices that are managed by Storage Essentials standalone configuration. This option is not supported with Storage Essentials integrated with HP Systems Insight Manager.

Click & Launch requires an SE account login. When you select other storage objects and then Click & Launch from them (while in the same session), the initial SE login will persist. There is no single sign-on capability for HP Server Automation and Storage Essentials.

You can launch SE only from a storage device. You cannot launch SE from a host.

5 Storage Search

Overview of Storage Search

In Storage Visibility and Automation, you can search for storage information in your IT environment, such as objects and attributes for server, database, and storage systems.

- [SA Client Integration](#)
- [Storage Objects and Attributes](#)

SA Client Integration

The search feature in Storage Visibility and Automation is integrated with the SA Client Search tool in the SA Client. To use search, you must be familiar with the basics of the SA Client Search tool. See the *SA User Guide: Server Automation* for information about using the following SA Client Search capabilities:

- Performing a simple search by using keywords
- Performing an advanced search by creating search queries
- Saving a search query
- Deleting a saved search
- Running a saved search query
- Performing actions on search results
- Emailing search results
- Printing search results
- [Storage Objects and Attributes](#)

Storage Objects and Attributes

By using the SA Client Search tool, you can search for the following storage objects and attributes:

- **Server**—FCA Manufacturer, FCA Model, FCA Port, FCA Version (Fibre Channel Adapter), Storage Make & Model, Storage Manager Software Manufacturer, and Storage Manager Software Type
- **Database**—Server Name, Version, and Manufacturer
- **Storage Systems**—Device Customer, Device Facility, Device Group, Discover Date, Facility Name, Manufacturer, Model, Name, Object ID, Port, RAID Type, and Serial Number
- [SA Client Integration](#)

Appendix A: Global File System (OGFS)

Overview of OGFS

The Global File System (OGFS) feature shows storage inventory in a file system-like presentation. The OGFS feature in Storage Visibility and Automation is integrated with the OGFS feature in the SA Client. To use the OGFS feature, you must be familiar with its basic capabilities in the SA Client. See the *SA User Guide: Server Automation* for more information.

The OGFS represents the data model as a hierarchical structure of file directories and text files. For example, in the OGFS, the `/opsw/Server` directory contains information about managed servers and includes subdirectories that represent the contents of the managed servers, such as storage, ports, and disks.

- [Global Shell](#)
- [Permissions](#)
- [Storage Directory in the OGFS](#)

Global Shell

The Global Shell is a command-line interface to the OGFS. This command-line interface is a Unix shell, such as bash, that runs in a terminal window. The default shell in Global Shell is bash.

The OGFS unifies the data model and the contents of storage devices and managed servers, including files, into a single, virtual file system. You open a Global Shell session from within a SA Client or from a direct ssh connection in a terminal client on your desktop. With the Global Shell, you can automate repetitive system administration tasks by running scripts across multiple storage devices and servers in a secure environment. Common scripting languages, such as Perl and Python, are supported.

The OGFS represents the data model as a hierarchical structure of file directories and text files. For example, in the OGFS, the `/opsw/Server/@/e-commerce.example.com/Storage` directory contains details about storage dependencies for the server named `e-commerce.example.com`.

See the *SA User Guide: Server Automation* for more information on how to use Global Shell.

- [Permissions](#)
- [Storage Directory in the OGFS](#)

Permissions

The actions that you can perform within the Global Shell are determined by the operations specified by the `aaa` utility. The `aaa` utility grants and revokes permissions for operations that use the OGFS. For example, the `aaa` utility grants permission for the `readServerFilesystem` operation, which allows you to browse a server's file system in the SA Client. To run the `aaa` utility, you must belong to the Administrators user group. The permissions granted and revoked by the `aaa` utility are stored in the `/opsw/Permissions` directory of the OGFS. See the *SA User Guide: Server Automation* for information about how to use the `aaa` utility.



You must have permissions in the Global Shell to view the file systems for storage inventory.

- [Storage Directory in the OGFS](#)

Storage Directory in the OGFS

The following sections describe subdirectories that contain storage content. The directory layout is designed to reflect the natural locations of storage objects, with the intent to facilitate intuitive navigation by OGFS users.

The primary storage directory roots are `/opsw/Storage`, which contains all storage system and storage network content and `/opsw/Server/.../Storage`, which contains storage objects specific to their respective servers.

Additional storage directory trees are provided to scope the content contained within `/opsw/Storage`. Examples include the `/opsw/Customer/.../Storage` directories, which contain storage resources that are assigned to customers, and the `/opsw/Facility/.../Storage` directories, which contain storage resources that are associated with facilities.

Although storage trees exist in multiple scoped locations, each and every object has a single location at which it can be reliably located in the OGFS. These locations are collectively referred to as *canonical locations*. Within each storage directory tree, symbolic links (symlinks) are used to traverse storage topology and reference storage information located in canonical directory paths.

The canonical location for a volume of a server is in the following directory:

```
/opsw/Server/.../Storage/Volume
```

In the following example, the `Volume` directory contains content pertaining to a `raid0` volume on the server:

```
/opsw/Server/@/myserver.opsware.com/Storage/Volume/raid0
```

If a file system is mounted on that volume, this is reflected in the OGFS as a symbolic link to the volume, which is located in its canonical location:

```
/opsw/Server/@/myserver.opsware.com/Storage/FileSystem/myfs/Volume/raid0  
-> /opsw/Server/@/myserver.opsware.com/Storage/Volume/raid0
```

- [/opsw/api/com/opsware/storage Directory](#)
- [/opsw/Storage Directory](#)
- [/opsw/Server/.../Storage/Controller Directory](#)
- [/opsw/.../Disk/Dependent Directory](#)

- [/opsw/.../Server/Storage/Fabric Directory](#)
- [/opsw/Server/.../Storage/FileSystem Directory](#)
- [/opsw/Server/.../Storage/Port Directory](#)
- [/opsw/Server/.../Storage/Service Directory](#)
- [/opsw/Server/.../Storage/Switch Directory](#)
- [/opsw/Server/.../Storage/System Directory](#)
- [/opsw/Server/.../Storage/Volume Directory](#)

/opsw/api/com/opsware/storage Directory

This directory is automatically provided by the existing (SA Client) UAPI infrastructure. The api directory contains executables that invoke methods on the SA API.

- [/opsw/Server/.../Storage/Controller Directory](#)
- [/opsw/.../Disk/Dependent Directory](#)
- [/opsw/.../Server/Storage/Fabric Directory](#)
- [/opsw/Server/.../Storage/FileSystem Directory](#)
- [/opsw/Server/.../Storage/Port Directory](#)
- [/opsw/Server/.../Storage/Service Directory](#)
- [/opsw/Server/.../Storage/Switch Directory](#)
- [/opsw/Server/.../Storage/System Directory](#)
- [/opsw/Server/.../Storage/Volume Directory](#)

/opsw/Storage Directory

This directory contains storage system and storage network artifacts. This directory is replicated in the following paths with filtered content:

- [/opsw/Facility/<facility>/@/Storage](#)—This directory shows the content of [/opsw/Storage](#) with the top-level directories filtered by facility.
- [/opsw/Group/<Public|Private>/<group>/@/Storage](#)—This directory shows [opsw/Storage](#) content with the top level directories filtered by group.
- [/opsw/Customer/<customer>/@/Storage](#)—This directory shows [opsw/Storage](#) content filtered by customer.
 - [/opsw/Server/.../Storage/Controller Directory](#)
 - [/opsw/.../Disk/Dependent Directory](#)
 - [/opsw/.../Server/Storage/Fabric Directory](#)
 - [/opsw/Server/.../Storage/FileSystem Directory](#)

- /opsw/Server/.../Storage/Port Directory
- /opsw/Server/.../Storage/Service Directory
- /opsw/Server/.../Storage/Switch Directory
- /opsw/Server/.../Storage/System Directory
- /opsw/Server/.../Storage/Volume Directory

/opsw/Server/.../Storage Directory

This directory contains server-related storage artifacts.

`/opsw/Server/.../Storage`

- [/opsw/Server/.../Storage/Controller Directory](#)
- [/opsw/.../Disk/Dependent Directory](#)
- [/opsw/.../Server/Storage/Fabric Directory](#)
- [/opsw/Server/.../Storage/FileSystem Directory](#)
- [/opsw/Server/.../Storage/Port Directory](#)
- [/opsw/Server/.../Storage/Service Directory](#)
- [/opsw/Server/.../Storage/Switch Directory](#)
- [/opsw/Server/.../Storage/System Directory](#)
- [/opsw/Server/.../Storage/Volume Directory](#)

/opsw/Server/.../Storage/Controller Directory

This directory contains a subdirectory with symlinks to controller ports and a subdirectory with symlinks to volumes imported through this controller.

`/opsw/Server/.../Storage/Controller/Port`

`/opsw/Server/.../Storage/Controller/Volume`

- [/opsw/Storage Directory](#)
- [/opsw/.../Disk/Dependent Directory](#)
- [/opsw/.../Server/Storage/Fabric Directory](#)
- [/opsw/Server/.../Storage/FileSystem Directory](#)
- [/opsw/Server/.../Storage/Port Directory](#)
- [/opsw/Server/.../Storage/Service Directory](#)
- [/opsw/Server/.../Storage/Switch Directory](#)
- [/opsw/Server/.../Storage/System Directory](#)
- [/opsw/Server/.../Storage/Volume Directory](#)

/opsw/.../Disk/Dependent Directory

This directory contains symlinks to dependent volumes. There are several places where the `Disk` directory can exist. It can occur on the server side (to show the local disks on a server), such as:

`/opsw/Server/@/myserver.opsware.com/Disk`

Or, it can be located on a storage system (to show the disks contained in a storage array), such as:

`/opsw/Storage/System/emcdmx-01/Disk`

The `Dependent` subdirectory can exist in many locations (one of which is a subdirectory of a disk). In each case, the `Dependent` subdirectory shows storage artifacts that are dependent on the object represented in the current directory, such as:

```
/opsw/Storage/System/emcdmx-01/Disk/01A\C0/Dependent
```

In this example, this path shows the objects that directly depend on disk `01A:C0`.



In Storage Visibility and Automation, when disks are referred to in the context of a storage system, disk information might not be available. Disk information that is provided depends on what the settings are for discovering disks in Storage Essentials.

- [/opsw/Storage Directory](#)
- [/opsw/Server/.../Storage/Controller Directory](#)
- [/opsw/.../Server/Storage/Fabric Directory](#)
- [/opsw/Server/.../Storage/FileSystem Directory](#)
- [/opsw/Server/.../Storage/Port Directory](#)
- [/opsw/Server/.../Storage/Service Directory](#)
- [/opsw/Server/.../Storage/Switch Directory](#)
- [/opsw/Server/.../Storage/System Directory](#)
- [/opsw/Server/.../Storage/Volume Directory](#)

/opsw/.../Server/Storage/Fabric Directory

This directory contains symlinks to fabric-connected devices, zones on the fabric, symlinks to ports in the zone, zone aliases on the fabric, symlinks to zone aliases that reference the zone, zone sets, and switches on the fabric.

```
/opsw/Server/.../Storage/Fabric/ConnectedDevice  
/opsw/Server/.../Storage/Fabric/Switch  
/opsw/Server/.../Storage/Fabric/Zone  
/opsw/Server/.../Storage/Fabric/Zone/Member  
/opsw/Server/.../Storage/Fabric/Zone/ZoneAlias  
/opsw/Server/.../Storage/Fabric/Zone/ZoneSet  
/opsw/Server/.../Storage/Fabric/ZoneAlias  
/opsw/Server/.../Storage/Fabric/ZoneAlias/Member  
/opsw/Server/.../Storage/Fabric/ZoneAlias/Zone  
/opsw/Server/.../Storage/Fabric/ZoneSet  
/opsw/Server/.../Storage/Fabric/ZoneSet/Zone  
/opsw/Server/.../Storage/Fabric/Switch
```

- [/opsw/Storage Directory](#)
- [/opsw/Server/.../Storage/Controller Directory](#)
- [/opsw/.../Disk/Dependent Directory](#)
- [/opsw/Server/.../Storage/FileSystem Directory](#)
- [/opsw/Server/.../Storage/Port Directory](#)
- [/opsw/Server/.../Storage/Service Directory](#)

- [/opsw/Server/.../Storage/Switch Directory](#)
- [/opsw/Server/.../Storage/System Directory](#)
- [/opsw/Server/.../Storage/Volume Directory](#)

/opsw/Server/.../Storage/FileSystem Directory

This directory contains symlinks to the volume underlying the file system.

- [/opsw/Server/.../Storage/FileSystem/Volume](#)
- [/opsw/Storage Directory](#)
- [/opsw/Server/.../Storage/Controller Directory](#)
- [/opsw/.../Disk/Dependent Directory](#)
- [/opsw/.../Server/Storage/Fabric Directory](#)
- [/opsw/Server/.../Storage/Port Directory](#)
- [/opsw/Server/.../Storage/Service Directory](#)
- [/opsw/Server/.../Storage/Switch Directory](#)
- [/opsw/Server/.../Storage/System Directory](#)
- [/opsw/Server/.../Storage/Volume Directory](#)

/opsw/Server/.../Storage/Port Directory

This directory contains symlinks to a connected device, symlinks to a connected port, symlinks to a protocol controller, symlinks to the connected fabric, symlinks to volumes on this port, symlinks zones referencing this port, and symlinks to zone aliases referencing this port. This directory can reside under multiple storage domains.

- [/opsw/...Port/Connected Device](#)
- [/opsw/.../Port/ConnectPort](#)
- [/opsw/.../Port/Controller](#)
- [/opsw/.../Port/Fabric](#)
- [/opsw/.../Port/Volume](#)
- [/opsw/.../Port/Zone](#)
- [/opsw/.../Port/ZoneAlias](#)
- [/opsw/Storage Directory](#)
- [/opsw/Server/.../Storage/Controller Directory](#)
- [/opsw/.../Disk/Dependent Directory](#)
- [/opsw/.../Server/Storage/Fabric Directory](#)
- [/opsw/Server/.../Storage/FileSystem Directory](#)
- [/opsw/Server/.../Storage/Service Directory](#)
- [/opsw/Server/.../Storage/Switch Directory](#)

- [/opsw/Server/.../Storage/System Directory](#)
- [/opsw/Server/.../Storage/Volume Directory](#)

/opsw/Server/.../Storage/Service Directory

This directory contains MPIIO Manager and Volume Manager software, symlinks to volumes exported, and symlinks to volumes imported by each service.

```
/opsw/Server/.../Storage/Service/<service-name>/Volume
/opsw/Server/.../Storage/Service/<service-name>/InputVolume
/opsw/Server/.../Storage/Service/<service-name>/OutputVolume
```

- [/opsw/Storage Directory](#)
- [/opsw/Server/.../Storage/Controller Directory](#)
- [/opsw/.../Disk/Dependent Directory](#)
- [/opsw/.../Server/Storage/Fabric Directory](#)
- [/opsw/Server/.../Storage/FileSystem Directory](#)
- [/opsw/Server/.../Storage/Port Directory](#)
- [/opsw/Server/.../Storage/Switch Directory](#)
- [/opsw/Server/.../Storage/System Directory](#)
- [/opsw/Server/.../Storage/Volume Directory](#)

/opsw/Server/.../Storage/Switch Directory

This directory contains symlinks to connected devices, symlinks to connected fabrics, and switch ports.

```
/opsw/Server/.../Storage/Switch/Fabric
/opsw/Server/.../Storage/Switch/Port
```

- [/opsw/Storage Directory](#)
- [/opsw/Server/.../Storage/Controller Directory](#)
- [/opsw/.../Disk/Dependent Directory](#)
- [/opsw/.../Server/Storage/Fabric Directory](#)
- [/opsw/Server/.../Storage/FileSystem Directory](#)
- [/opsw/Server/.../Storage/Port Directory](#)
- [/opsw/Server/.../Storage/Service Directory](#)
- [/opsw/Server/.../Storage/System Directory](#)
- [/opsw/Server/.../Storage/Volume Directory](#)

/opsw/Server/.../Storage/System Directory

This directory contains storage system protocol controllers, storage system physical disks, storage system volume pools, symlinks to volumes within a storage pool, storage system ports, and storage volumes.

```
/opsw/Server/.../Storage/System/Controller
/opsw/Server/.../Storage/System/Disk
/opsw/Server/.../Storage/System/Pool
/opsw/Server/.../Storage/System/Pool/Volume
/opsw/Server/.../Storage/System/Pool/Volume/Antecedent
/opsw/Server/.../Storage/System/Pool/Volume/Dependent
/opsw/Server/.../Storage/System/Pool/Volume/Initiator
/opsw/Server/.../Storage/System/Pool/Volume/Pool
/opsw/Server/.../Storage/System/Pool/Volume/Port
/opsw/Server/.../Storage/System/Port
/opsw/Server/.../Storage/System/Volume
```

- [/opsw/Storage Directory](#)
- [/opsw/Server/.../Storage/Controller Directory](#)
- [/opsw/.../Disk/Dependent Directory](#)
- [/opsw/.../Server/Storage/Fabric Directory](#)
- [/opsw/Server/.../Storage/FileSystem Directory](#)
- [/opsw/Server/.../Storage/Port Directory](#)
- [/opsw/Server/.../Storage/Service Directory](#)
- [/opsw/Server/.../Storage/Switch Directory](#)
- [/opsw/Server/.../Storage/Volume Directory](#)

/opsw/Server/.../Storage/Volume Directory

This directory contains symlinks to antecedent storage volumes and physical disks, symlinks to controllers importing this volume, symlinks to dependent storage volumes, symlinks to dependent file systems, paths through which the volume is imported, symlinks to storage ports importing this volume, symlink to the service that provides this volume, symlink to the target volume in the storage system domain, symlinks to connected host initiator volumes, and symlinks to the storage pool associated with this volume.

```
/opsw/Server/.../Storage/Volume/Antecedent
/opsw/Server/.../Storage/Volume/Controller
/opsw/Server/.../Storage/Volume/Dependent
/opsw/Server/.../Storage/Volume/FileSystem
/opsw/Server/.../Storage/Volume/Path
/opsw/Server/.../Storage/Volume/Port
/opsw/Server/.../Storage/Volume/Service
/opsw/Server/.../Storage/Volume/Target
```

- [/opsw/Storage Directory](#)
- [/opsw/Server/.../Storage/Controller Directory](#)

- /opsw/.../Disk/Dependent Directory
- /opsw/.../Server/Storage/Fabric Directory
- /opsw/Server/.../Storage/FileSystem Directory
- /opsw/Server/.../Storage/Port Directory
- /opsw/Server/.../Storage/Service Directory
- /opsw/Server/.../Storage/Switch Directory
- /opsw/Server/.../Storage/System Directory

Index

A

aaa utility, 88
aggregate capacity, 49
aggregate caption, 49
aggregates, 49
Array Groups, 35
ASM. See Automatic Storage Management., 31, 60
audit schedule, 75
audit summary, 75
Automatic Storage Management, 31, 60

B

block-based devices, 60

C

canonical locations, 88
CIFS. See Common Internet File System., 49
committed capacity, 49
composite volumes, 35
connected fabric port, 36
consumed storage, 21

D

DAS. See Direct Attached Storage., 21, 26, 30
data files, 60
data replication, ASM, 60
Database Scanner for Oracle, 13, 17
dependent volumes, 91
device groups
 dynamic, 71
 static, 20, 21, 35, 47, 48, 49, 50, 59, 60, 70
Direct Attached Storage, 21, 26
disk controllers, 35
disk quota, 59

dynamic device group, 70, 71

E

E_Ports, 47

F

fabric ports, 35
fabric switches, 47
FCA. See Fibre Channel Adapter., 21
Fibre Channel Adapter, 21
Fibre Channel ID, 47
fibre switch and fabrics, 47
File I/O and Block I/O, 49
File I/O Exports, 49
file-based devices, 60
flex volumes, 49
F_Ports, 47
free extents, 35

G

GAED, 18
GAED. See Get All Element Details., 14, 18, 79, 84
Get All Element Details, 14, 79, 84
Global File System, 47, 87
Global Shell, 87
G_Ports, 47

H

Hitachi SAN array, 35
HP XP, 35

I

Inter-Switch Link, 47
ISL. See Inter-Switch Link., 47

L

- layered volume managers, 21
- layered volumes, 21
- local attached storage, 26
- local storage, 21
- logical database storage, 17, 60
- logical entities, 20, 21
- logical volume, 19
- LUN Mapping, 35

M

- meta volumes, 35
- Model Repository, 13, 19
 - Oracle setup, 87
- MPIO. See Multipath IO., 21, 29
- Multipath IO, 21
- MultiStore, 50

N

- NAS. See Network Attached Storage., 13, 17, 20, 26, 59
- NetApp Cluster, 50
- NetApp Filer, 48
- NetApp Vfiler, 50
- NetApp volumes, 49
- Network Attached Storage, 13, 17, 20, 26, 59
- NFS exports, 50
- NFS. See Network File System., 49, 60
- N_Port, 47

O

- OGFS. See Global File System., 47, 87
- ONTAP 6.5, 49
- ONTAP 7.0, 49
- Oracle ASM. See Automatic Storage Management., 31
- Oracle instance, 59

P

- physical database storage, 17, 60
- physical disk, 19
- physical entities, 21

- Plex, 48
- port controllers, 35
- ports connectivity, 47
- primordial storage, 21
- principal switch, 47
- produced storage, 21

Q

- Qtrees, 49
- quota, 49

R

- RAID groups, 48
- raw partitions, 60
- redo logs, 60
- replication, 61
- replication pair, 46
- root volumes, 21

S

- SA. See Server Automation., 77
- SAN. See Storage Area Network., 20, 60
- SAR. See Service Automation Reporter., 14, 77
- SAV. See Service Automation Visualizer., 14, 38, 39, 77
- schedule, audit, 75
- SE Connector, 13, 14
- SE Storage Scanner. See SE Connector., 14
- SE. See Storage Essentials., 14, 77
- Select server, 74
- server administrator, 20
- Server Automation, 14, 77
- server, select, 74
- Service Automation Reporter, 14, 77
- Service Automation Visualizer, 14, 38, 39, 77
- SHA. See Storage Host Agent Extension., 19
- SIM. See Systems Insight Manager., 18, 84
- space guarantee, 49
- space threshold, 49
- static device group, 20, 21, 35, 47, 48, 49, 50, 59, 60, 70

Storage Area Network, 20
Storage Essentials, 38, 39, 92
Storage Host Agent Extension, 13, 19, 25
storage pool, 35
storage target, 33
storage volumes, 35
subordinate switch, 47
summary, audit, 75
switch blade, 47
switch enclosure, 47
switch port, 47
symbolic links, 88
symlinks, 91
symlinks. See symbolic links., 88, 91
Systems Insight Manager, 18, 84

T

tablespaces, 60
traditional volumes, 49

V

vFiler, 49
virtual filers, 50

W

World Wide Name, 21, 47
WWN. See World Wide Name., 21, 47

Z

zones, 47
zonesets, 47, 48
zoning database, 47

