

# HP Real User Monitor

Software Version: 9.25

## Real User Monitor What's New

Document Release Date: January 2015  
Software Release Date: January 2015



## Legal Notices

### Warranty

The only warranties for HP products and services are set forth in the express warranty statements accompanying such products and services. Nothing herein should be construed as constituting an additional warranty. HP shall not be liable for technical or editorial errors or omissions contained herein.

The information contained herein is subject to change without notice.

### Restricted Rights Legend

Confidential computer software. Valid license from HP required for possession, use or copying. Consistent with FAR 12.211 and 12.212, Commercial Computer Software, Computer Software Documentation, and Technical Data for Commercial Items are licensed to the U.S. Government under vendor's standard commercial license.

### Copyright Notice

© Copyright 2005 - 2015 Hewlett-Packard Development Company, L.P.

### Trademark Notices

Adobe® and Acrobat® are trademarks of Adobe Systems Incorporated.

AMD and the AMD Arrow symbol are trademarks of Advanced Micro Devices, Inc.

Google™ and Google Maps™ are trademarks of Google Inc.

Intel®, Itanium®, Pentium®, and Intel® Xeon® are trademarks of Intel Corporation in the U.S. and other countries.

iPod is a trademark of Apple Computer, Inc.

Java is a registered trademark of Oracle and/or its affiliates.

Microsoft®, Windows®, Windows NT®, Windows® XP, and Windows Vista® are U.S. registered trademarks of Microsoft Corporation.

Oracle is a registered trademark of Oracle Corporation and/or its affiliates.

UNIX® is a registered trademark of The Open Group.

## Documentation Updates

The title page of this document contains the following identifying information:

- Software Version number, which indicates the software version.
- Document Release Date, which changes each time the document is updated.
- Software Release Date, which indicates the release date of this version of the software.

To check for recent updates or to verify that you are using the most recent edition of a document, go to: <https://softwaresupport.hp.com/group/softwaresupport/search-result?keyword=>.

This site requires an HP Passport account. If you do not have one, click the **Create an account** button on the HP Passport Sign in page.

## Support

Visit the HP Software Support web site at: <https://softwaresupport.hp.com>

This web site provides contact information and details about the products, services, and support that HP Software offers.

HP Software Support provides customer self-solve capabilities. It provides a fast and efficient way to access interactive technical support tools needed to manage your business. As a valued support customer, you can benefit by using the support web site to:

- Search for knowledge documents of interest
- Submit and track support cases and enhancement requests
- Download software patches
- Manage support contracts
- Look up HP support contacts
- Review information about available services
- Enter into discussions with other software customers
- Research and register for software training

Most of the support areas require that you register as an HP Passport user and sign in. Many also require a support contract. To register for an HP Passport ID, go to <https://softwaresupport.hp.com> and click **Register**.

To find more information about access levels, go to: <https://softwaresupport.hp.com/web/softwaresupport/access-levels>

## HP Software Solutions & Integrations and Best Practices

Visit HP Software Solutions Now at <https://h20230.www2.hp.com/sc/solutions/index.jsp> to explore how the products in the HP Software catalog work together, exchange information, and solve business needs.

Visit the Cross Portfolio Best Practices Library at <https://hpin.hp.com/group/best-practices-hpsw> to access a wide variety of best practice documents and materials.

# Contents

- Overview ..... 5
- What's New in Real User Monitor 9.25 ..... 6
- What's New in Real User Monitor 9.24 .....13
- What's New in Real User Monitor 9.23 .....15
- What's New in Real User Monitor 9.22 .....16
- What's New in Real User Monitor 9.21 .....17
- What's New in Real User Monitor 9.20 .....18
- Send Documentation Feedback .....19

## Overview

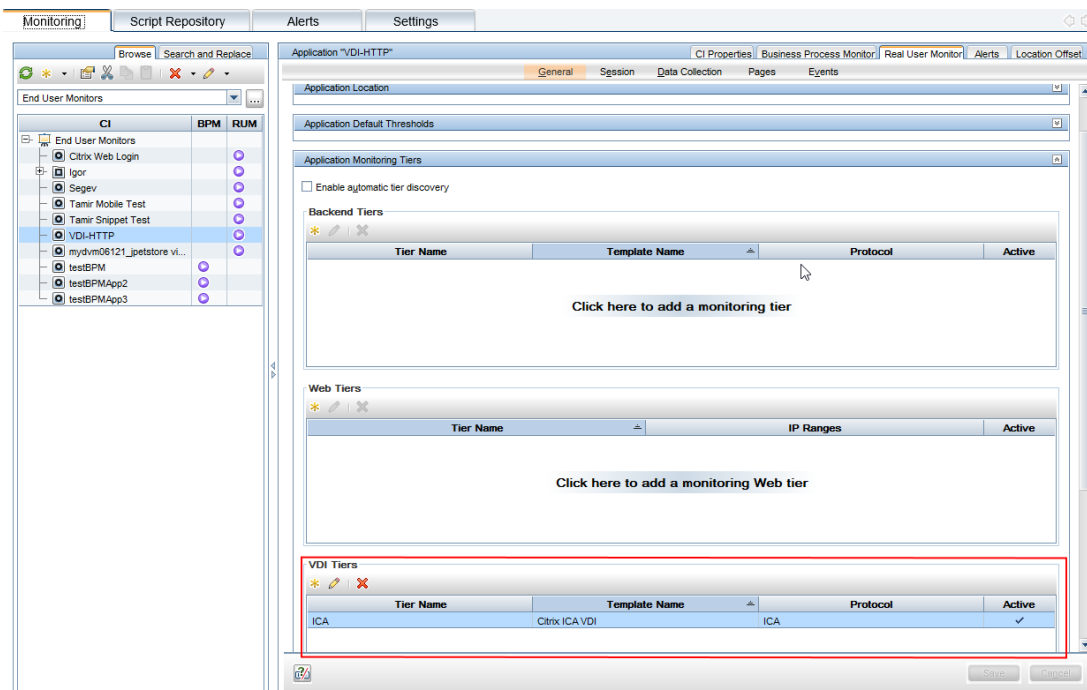
This document provides information about new features and enhancements in HP Real User Monitor 9.25, 9.24, 9.23, 9.22, 9.21 and 9.20.

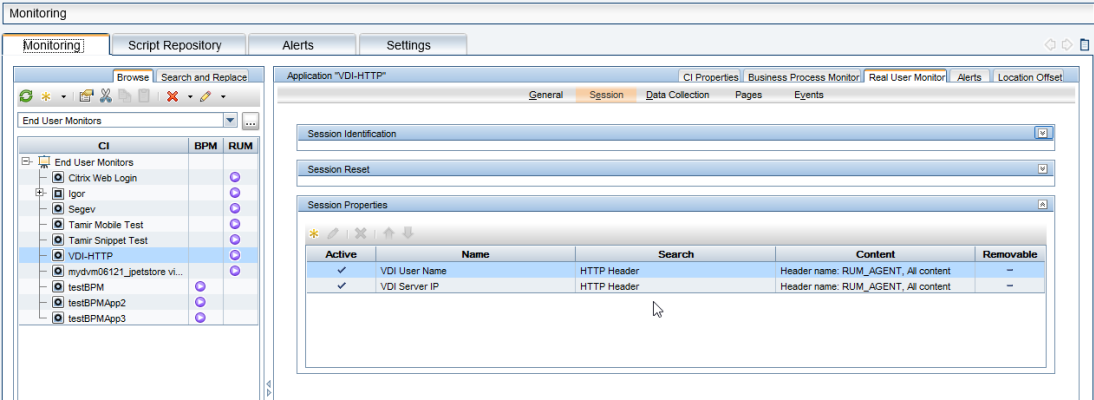
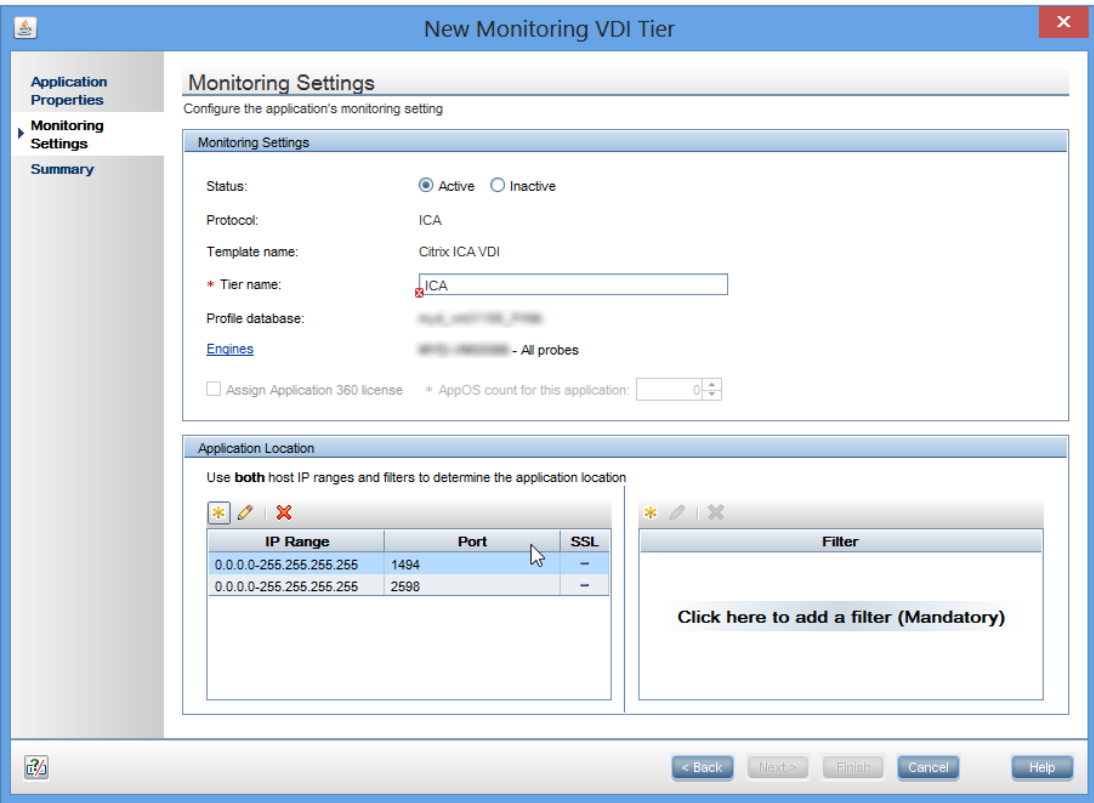
For customer escalation fixes and internal bug fixes made to Real User Monitor 9.25, see the [Real User Monitor 9.25 Release Notes](#).

For new features and enhancements in earlier versions of Real User Monitor, see the [HP Software Support](#) site.

# What's New in Real User Monitor 9.25

- Added full support for TLS (Transport Layer Security) versions 1.1/1.2 based traffic
- Improved support for VDI-based applications:
  - Simplified configuration for applications using Citrix





- Improved Isolation Flow for Citrix-based applications.

RUM Session Analyzer

Start Time	Tier	End User Subgroup	Client	VDI Server IP	User Name	VDI User Name	Locatio	Active	Duration (hh:mm:ss)	Latenc (ms)	VDI Latency (ms)	Error Events	Informational Events	Slow Actions	Actions	Has Data for VuGen Scripts
1/7/2015 10:05 PM	HTTP/Web	Others [0.0.0.0-255.255.255.255]					Palo Alto	No	00:01:45	64.45	300.38	15	0	0	34	No
1/7/2015 3:53 PM	HTTP/Web	Others [0.0.0.0-255.255.255.255]					Palo Alto	No	00:01:11	60.5	300.38	14	0	0	35	No
1/7/2015 3:17 PM	HTTP/Web	Others [0.0.0.0-255.255.255.255]					Palo Alto	No	00:01:14	64.02	175.69	17	0	0	40	No
1/7/2015 3:14 PM	HTTP/Web	Others [0.0.0.0-255.255.255.255]					Palo Alto	No	00:01:04	64.13	107.39	27	0	0	58	No
1/7/2015 2:41 PM	HTTP/Web	Others [0.0.0.0-255.255.255.255]					Palo Alto	No	00:01:17	64.93	107.39	8	0	0	18	No
1/7/2015 2:32 PM	HTTP/Web	Others [0.0.0.0-255.255.255.255]					Palo Alto	No	00:00:44	60.15	107.39	11	0	0	28	No
1/7/2015 1:54 PM	HTTP/Web	Others [0.0.0.0-255.255.255.255]					Palo Alto	No	00:05:12	58.45	175.6	5	0	0	18	No
0/7									62.74		308.86	98	0	0	220	No

# Real User Monitor What's New

## What's New in Real User Monitor 9.25

Active Filters

Session Properties

End User Groups

Transactions

Servers

Locations

User Properties

Actions

Events

Tiers

Application	Tier	Session Property	Operator	Value
VDI-HTTP	HTTP-Web	VDI Server IP	ignore	
VDI-HTTP	HTTP-Web	VDI User Name	ignore	

Session status: ☒ All ☐ Active ☐ Closed

☐ Show only sessions with data for generating VuGen scripts
 ☐ Only show sessions accessed via VDI tier
 ☐ Only show sessions accessed directly from application

Session Details 1/7/2015 10:04 PM-10:08 PM (GMT+02:00) Jerusalem

Refresh

Properties

Start time: 1/7/2015 10:05 PM

Client IP: 192.168.1.100

Application: VDI-HTTP

Client host name: N/A

End user: Others [0.0.0.0-255.255.255.255]

User name: N/A

Location: Palo Alto

Server IP: 192.168.1.100

Total Traffic (KB): 793.9

Arrived from: N/A

Duration (hh:mm:ss): 00:01:45

Client type: Internet Explorer 8.0

Operating system: Windows

HTTP version: HTTP/1.1

Latency (ms): 64.45

Total action hits: 34

VDI Session Properties

Duration (hh:mm:ss): 00:36:14

VDI Latency (ms): 360.38

VDI Server IP: 192.168.1.100

Start time: 1/7/2015 3:52 PM

VDI User Name: hpsvlab@vaud

General Events

No data was found.

Actions

There are 34 actions in the session with 34 frame units, of which 34 units are for the selected application.

Session Replay

Session VuGen Script

Action	Start Time	Application	Events	Total Time (sec)	Server Time (sec)	Network Time (sec)	Client Time (sec)	Think Time (sec)	Total Traffic (KB)	Snapshot
1/7/2015 10:05:54 PM	VDI-HTTP	Request refused	0.122	0.017	0.105	0.000	0.001	1.9	Yes	
1/7/2015 10:55:54 PM	VDI-HTTP	-	0.512	0.012	0.000	0.000	1.0	No		
1/7/2015 10:55:54 PM	VDI-HTTP	-	0.489	0.048	0.420	0.000	8.954	55.0	No	
1/7/2015 10:56:54 PM	VDI-HTTP	-	0.229	0.007	0.213	0.000	2.805	1.3	No	

Session Groups

Group session by: VDI User Name

Value	Number of Sessions	Number of Subgroups	Error Events	Info Events	Performance Events	Total Actions	Unavailable Actions	Latency (ms)	Total Traffic (KB)	VDI Latency (ms)
192.168.1.100	2	1	23	0	0	58	23	62.31	1,403.4	175.74
192.168.1.101	5	1	75	0	0	171	75	62.88	4,053.7	320.92
192.168.1.102	7	1	98	0	0	229	98	62.74	5,457.1	308.86

Detailed Subgroups

Group session by: VDI Server IP

Value	Number of Sessions	Error Events	Info Events	Performance Events	Total Actions	Unavailable Actions	Latency (ms)	Total Traffic (KB)	VDI Latency (ms)
192.168.1.100	2	23	0	0	58	23	62.31	1,403.4	175.74
192.168.1.101	2	23	0	0	58	23	62.31	1,403.4	175.74

RUM Tier Summary 01/07/2015 10:54:30 AM-01/08/2015 10:54:30 AM (GMT+02:00) Jerusalem

View: Fast day

From: 1/7/15 10:54 AM To: 1/8/15 10:54 AM

Set as default period

Applications: VDI-HTTP

Active Filters: None (Restore Default Settings)

Highlights

Application

Network

Tier	Tier Availability (%)	Total Action Hits	Slow Action Hits	Total Time (sec)	Total Requests	Connection Availability (%)	Total Connection Attempts	Total Traffic (MB)	Latency (ms)
HTTP-Web	100.00	300	0	0.44	3,183	100.00	117	7.6	73.46
ICA	100.00	-	-	-	-	100.00	15	1.2	198.80

Critical

OK

Minor

No data

Downtime

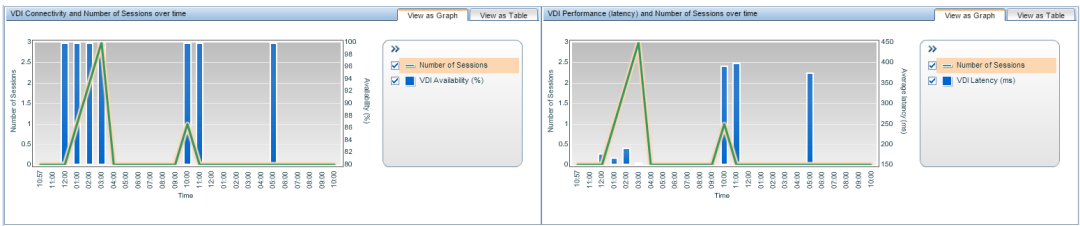
Unknown

HP Real User Monitor (9.25)

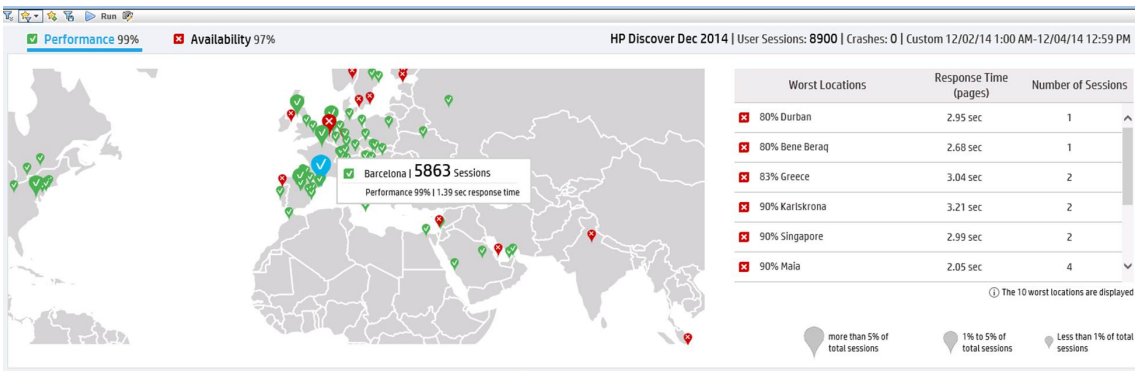
Page 8 of 19



- Enriched Application Health report showing impact of Citrix measurements on overall health



- Updated Geo Location database with the IP address of the location in both mobile and sniffer-based traffic



- Added ability to use static configuration to extract user data with strict rules for instrumented mobile applications

**Mobile Application Instrumentation for Android**

Use this tool to instrument Android applications.  
For iOS instrumentation instructions refer to the Real User Monitor Installation and Upgrade Guide.

\* APK file:  No file chosen

---

☒ **Instrument for Production** (use this option to enable you to upload the instrumented application to the Play Store)

\* Application:

\* RUM Client Monitor Probe URL:

(Example: [http://www.example.com/monitor](#))

Application Signing (leave blank if you want to sign the application later using Javas jarsigner.exe utility)

Keystore file:  No file chosen

Keystore password:

Key alias:

Key password:

☐ Add "Access Network State" permission to the application (required for RUM to determine the user connection type: WiFi or Mobile)

**Allow access to http content** (parameters extraction, user name extraction, unhide query parameters)

☐ Do not allow content extraction

☒ Apply content extraction configuration change at instrumentation time only

☐ Apply any configuration changes to the mobile device even after instrumentation

☐ **Instrument for Testing** (use this option to test monitoring functionality without uploading the application to the Play Store)

\* Application:

\* RUM Client Monitor Probe URL:


(Example: [http://www.example.com/monitor](#))

☐ **Instrument for Offline Testing and Data Collection** (In this mode the instrumented application will not report data to the RUM Client Monitor probe)

☐ Store monitored data locally Monitored data will be saved to "Android/data/app\_package\_name/data" folder on the mobile device. This data includes POST content of requests, which can assist you in defining Extracted Parameters in BSM.

- Added support for Microsoft Windows Server 2012 (64-bit) Standard Edition
- Added support for Java version 7 update 72

- Enhancements
  - Updated calculation for stopped pages

 Edit Stopped Page Eve... ✕

\* Name:

Stopped page

Status:


☐ Active ☒ Inactive

Classification:

☒ Error ☐ Information


Scope:

☒ Global ☐ Selective

 OK Cancel Help

Actions

There are 13 actions in the session with 13 frame units, of which 13 units are for the selected application.

Action	Start Time	Application	User Name	Events
HP Page Load - Citrix Testing - 10/2/2014 11:30:46 AM	10/2/2014 11:30:46 AM	Citrix Testing	-	-
HP Page Load - Citrix Testing - 10/2/2014 11:31:10 AM	10/2/2014 11:31:10 AM	Citrix Testing	-	-
HP Page Load - Citrix Testing - 10/2/2014 11:31:27 AM	10/2/2014 11:31:27 AM	Citrix Testing	-	-
HP Page Load - Citrix Testing - 10/2/2014 11:31:01 AM	10/2/2014 11:31:01 AM	Citrix Testing	-	-
HP Page Load - Citrix Testing - 10/2/2014 11:31:30 AM	10/2/2014 11:31:30 AM	Citrix Testing	-	-
HP Page Load - Citrix Testing - 10/2/2014 11:31:32 AM	10/2/2014 11:31:32 AM	Citrix Testing	-	-
HP Page Load - Citrix Testing - 10/2/2014 11:31:55 AM	10/2/2014 11:31:55 AM	Citrix Testing	-	-
HP Page Load - Citrix Testing - 10/2/2014 11:31:57 AM	10/2/2014 11:31:57 AM	Citrix Testing	-	-
HP Page Load - Citrix Testing - 10/2/2014 11:32:00 AM	10/2/2014 11:32:00 AM	Citrix Testing	-	-
HP Page Load - Citrix Testing - 10/2/2014 11:32:30 AM	10/2/2014 11:32:30 AM	Citrix Testing	-	-
HP Page Load - Citrix Testing - 10/2/2014 11:32:33 AM	10/2/2014 11:32:33 AM	Citrix Testing	-	-
HP Page Load - Citrix Testing - 10/2/2014 11:33:51 AM	10/2/2014 11:33:51 AM	Citrix Testing	-	 Stopped page

- Added ability to match exact page sequence with no intermediate or repeated pages in transaction matching

**Add Business Transaction and its Real User Monitor Configuration**

**General Settings**

\* **Name:**

**Description:**

**Monitoring Settings**

**Transaction Page Settings**

Select the transaction matching rule.

☐ Include intermediate pages in measurements

☐ Ignore page order

☒ Match exact sequence (only include sequences with no intermediate or repeated pages)

Define the pages included in the transaction and their order.

\*

Page Name	Optional
pageA	<input type="checkbox"/>
pageB	<input type="checkbox"/>
pageC	<input type="checkbox"/>

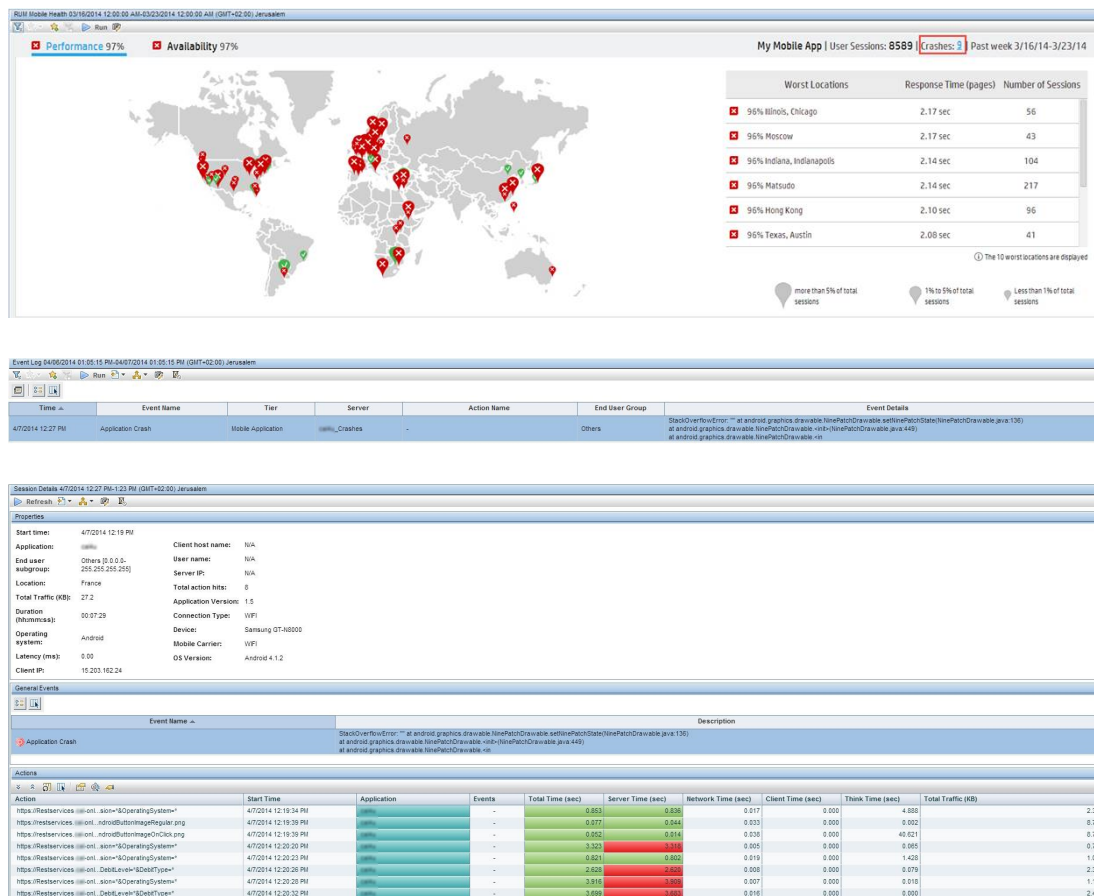
**Advanced Settings**

OK Cancel

- Assorted bug fixes

# What's New in Real User Monitor 9.24

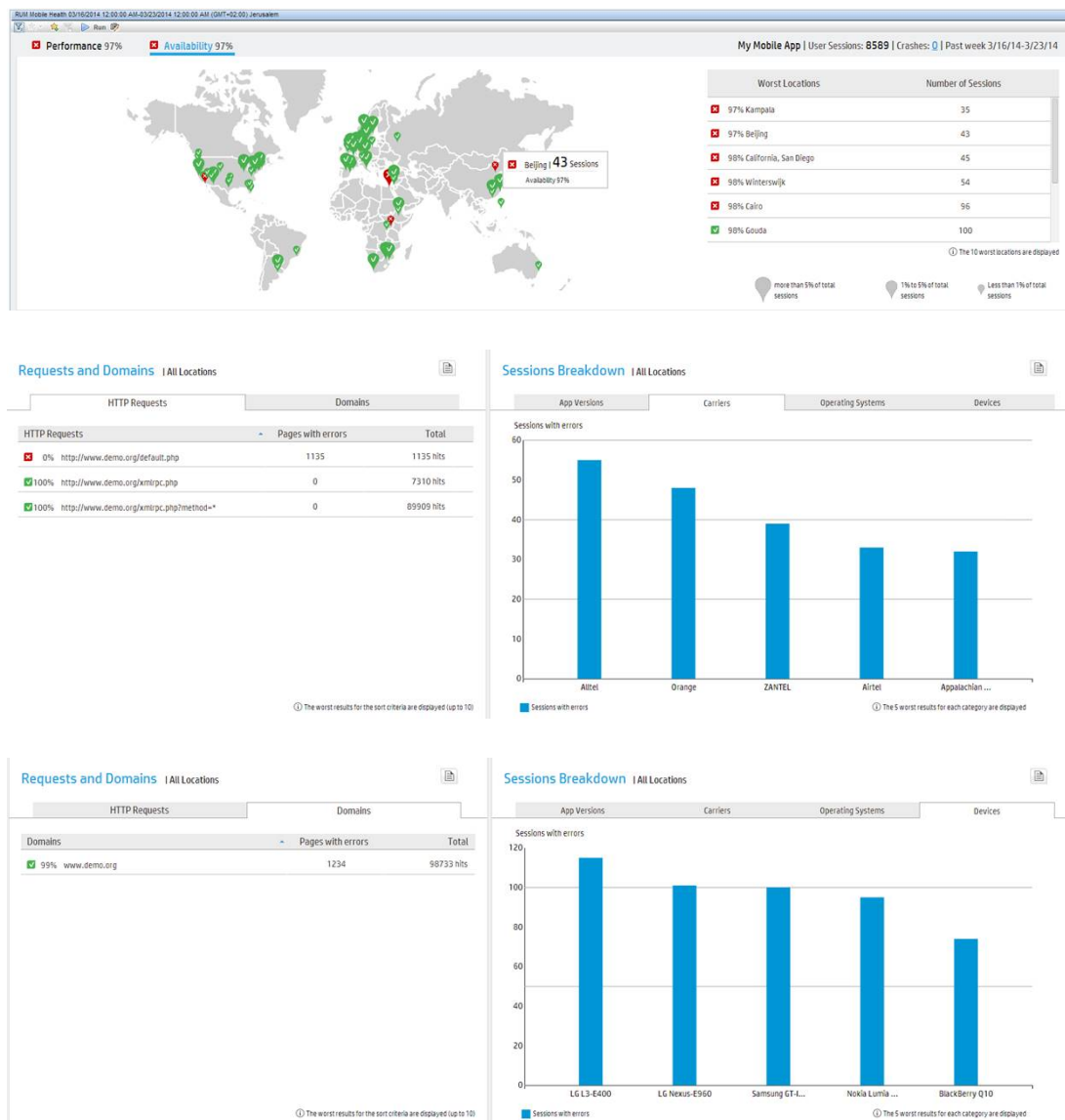
- RUM Mobile Solution Enhancements
  - Mobile Crash analysis data – Shows crashes along with device, carrier, OS, and application version. Enables mobile developers to quickly analyze crashes.



- Application Availability broken down by device, carrier, OS, and application version; helps to quickly identify regressions due to version release and poorly supported platforms; displays errors on HTTP requests and domains; helps to identify problematic third parties and actions.

## Real User Monitor What's New

### What's New in Real User Monitor 9.24



- Enrichment of RUM single event alert with action name, description, user name and client IP data
- Updated/additions to the supportability metric
  - Support for Microsoft Windows Server 2012 R2 (64-bit) Standard Edition
  - Support for Java 6 update 45 and Java 7 update 51
  - Support for additional Internet Explorer versions (9/10/11) in VDI (RUM HTTP) solution

# What's New in Real User Monitor 9.23

- RUM Mobile Solution
  - Support for mobile monitoring of iOS, Android, and hybrid applications.
  - Simplified administration for configuring and editing mobile applications in BSM, for monitoring by RUM.
  - RUM Mobile Health Report – New report that supplies an overview of mobile application end user experience.
    - Application performance, availability, and volume broken by device, carrier, OS and application version; helps to quickly identify regressions due to version release and poorly supported platforms.
    - Map view detailing the user experience in different geographies.
    - Poorly performing HTTP requests and domains; helps to identify problematic third parties and actions; ability to drill down to further investigate problems using other RUM reports or drill to HP Diagnostics.
  - RUM multi-tier monitoring provides end to end status of applications by leveraging RUM's back-end monitoring capabilities.
- Windows Communication Foundation (WCF) protocol support.
- Improved classification algorithm for web-HTTP based applications.
- Assorted bug fixes.
- Documentation Changes
  - Planning and deployment guides are now available from the HP SSO Product Manuals Site, to ensure that the most accurate and up-to-date versions of these documents are accessible to customers. The **Get\_Documentation.htm** file, which is available from the Real User Monitor release media and from the Real User Monitor Online Help system, provides deep links into all the documents needed to plan and install or upgrade Real User Monitor.
  - The Real User Monitor Online Help system now uses a new Webhelp engine that improves performance, enables more robust search capabilities (including boolean and string searching), provides quick toggling of the navigation pane, and enhances navigation with options for going to the previous or next topic.

## What's New in Real User Monitor 9.22

- RUM Mobile for Android apps helps ensure user mobile experience by monitoring Android native applications from the actual user device. Troubleshoot application performance problems across devices, networks, and back-end layers.
- RUM User Flow Analytics report identifies application flows which are frequently accessed by real users. The report provides visibility to real user sessions that include the flow and presents a simplified approach to configure RUM transactions. The report is based on an advanced HP Labs analytics algorithm.
- RUM Engine performance was significantly enhanced. A RUM Engine can now process up to 2000 pages per second.
- RUM Sniffer Probe stability improvements.
- Security fixes.
- Java, MySQL, and JBoss updates.
- Support for smart card authentication.



## What's New in Real User Monitor 9.21

- Supports monitoring of real-user experience using the new RUM Browser solution, based on JavaScript injection, without network sniffing.
- Supports the new RUM Server Collector (a virtual server tap) enabling the direction of traffic to the RUM probe directly from the server, without the need to perform special settings on the network.
- Supports remote span port over ERSPAN.
- New API for exporting raw data from RUM for external analysis.
- Bug fixes.

## What's New in Real User Monitor 9.20

- Support span port also over GRE tunnel (for Cisco Nexus virtual switches).
- Support for SAP GUI protocol.
- Bug fixes.

## Send Documentation Feedback

If you have comments about this document, you can [contact the documentation team](#) by email. If an email client is configured on this system, click the link above and an email window opens with the following information in the subject line:

### **Feedback on Real User Monitor What's New (Real User Monitor 9.25)**

Just add your feedback to the email and click send.

If no email client is available, copy the information above to a new message in a web mail client, and send your feedback to [SW-Doc@hp.com](mailto:SW-Doc@hp.com).

We appreciate your feedback!