

HP Service Health Reporter

For the Windows® and Linux operating systems

Software Version: 9.31

Integration Guide

Document Release Date: July 2014

Software Release Date: March 2014



Legal Notices

Warranty

The only warranties for HP products and services are set forth in the express warranty statements accompanying such products and services. Nothing herein should be construed as constituting an additional warranty. HP shall not be liable for technical or editorial errors or omissions contained herein.

The information contained herein is subject to change without notice.

Restricted Rights Legend

Confidential computer software. Valid license from HP required for possession, use or copying. Consistent with FAR 12.211 and 12.212, Commercial Computer Software, Computer Software Documentation, and Technical Data for Commercial Items are licensed to the U.S. Government under vendor's standard commercial license.

Copyright Notice

© Copyright 2014 Hewlett-Packard Development Company, L.P.

Trademark Notices

Adobe® is a trademark of Adobe Systems Incorporated.

Microsoft® and Windows® are U.S. registered trademarks of Microsoft Corporation.

UNIX® is a registered trademark of The Open Group.

Oracle®, Oracle WebLogic®, and Java® are registered trademarks of the Oracle Corporation and/or its affiliates.

IBM and WebSphere are trademarks of International Business Machines Corporation, registered in many jurisdictions worldwide.

Documentation Updates

The title page of this document contains the following identifying information:

- Software Version number, which indicates the software version.
- Document Release Date, which changes each time the document is updated.
- Software Release Date, which indicates the release date of this version of the software.

To check for recent updates or to verify that you are using the most recent edition of a document, go to: <http://h20230.www2.hp.com/selfsolve/manuals>

This site requires that you register for an HP Passport and sign in. To register for an HP Passport ID, go to: <http://h20229.www2.hp.com/passport-registration.html>

Or click the **New users - please register** link on the HP Passport login page.

You will also receive updated or new editions if you subscribe to the appropriate product support service. Contact your HP sales representative for details.

Support

Visit the HP Software Support Online web site at: <http://www.hp.com/go/hpsupport>

This web site provides contact information and details about the products, services, and support that HP Software offers.

HP Software online support provides customer self-solve capabilities. It provides a fast and efficient way to access interactive technical support tools needed to manage your business. As a valued support customer, you can benefit by using the support web site to:

- Search for knowledge documents of interest
- Submit and track support cases and enhancement requests
- Download software patches
- Manage support contracts
- Look up HP support contacts
- Review information about available services
- Enter into discussions with other software customers
- Research and register for software training

Most of the support areas require that you register as an HP Passport user and sign in. Many also require a support contract. To register for an HP Passport ID, go to:

<http://h20229.www2.hp.com/passport-registration.html>

To find more information about access levels, go to:

http://h20230.www2.hp.com/new_access_levels.jsp

HP Software Solutions Now accesses the HPSW Solution and Integration Portal Web site. This site enables you to explore HP Product Solutions to meet your business needs, includes a full list of Integrations between HP Products, as well as a listing of ITIL Processes. The URL for this Web site is

<http://h20230.www2.hp.com/sc/solutions/index.jsp>

Contents

Contents	3
Part I: Integrating with Data Sources	5
Chapter 1: Integrating with Data Sources for HP Operations Smart Plug-ins	6
Working of the Integration	6
Prerequisites for Generating SHR Reports from the HP Operations SPIs Data	7
Prerequisite Policies for the Microsoft Exchange Server Reports	8
Prerequisite Policies for the Microsoft Active Directory Reports	11
Prerequisite Policies for the Microsoft SQL Server Reports	14
Prerequisite Policies for the Oracle Database Reports	19
Prerequisite Policies for the Oracle WebLogic Reports	27
Prerequisite Policies for the IBM WebSphere Reports	39
Chapter 2: Integrating with Data Sources for HP Operations Manager i Management Packs	57
Working of the Integration	57
Prerequisites for Generating SHR Reports from the OMi MP Data	58
Prerequisite Policies for OMi MP for Hadoop Reports	60
Prerequisite Policies for OMi MP for Microsoft Active Directory Reports	60
Prerequisite Policies for OMi MP for Microsoft SQL Server Reports	62
Prerequisite Policies for OMi MP for Oracle Database Reports	65
Prerequisite Policies for OMi MP for Oracle WebLogic Reports	68
Prerequisite Policies for OMi MP for SAP Reports	69
Prerequisite Policies for OMi MP for SAP HANA Reports	76
Prerequisite Policies for OMi MP for Vertica Reports	77
Part II: Integrating with Other Monitoring Solutions	80
Chapter 3: Integrating SHR with MyBSM	81
Steps for Integrating SHR with MyBSM	81
Step 1: Creating a User in SHR and Configuring Preferences	81
Step 2: Configuring BSM/SHR LW-SSO Authentication	87
Step 3: Configuring SAP BusinessObjects Trusted Authentication	91

Step 4: Generating the Report Component XML and Loading it to MyBSM	92
Step 5: Creating MyBSM Page and Adding the Report Component	97
Best Practices	98
Finding the Document ID of a Report	99
We appreciate your feedback!	101

Part I: Integrating with Data Sources

HP Service Health Reporter (SHR) is a historical performance reporting solution for infrastructure and applications. Using the reports created by SHR, you can compare and analyze the usage and performance of different applications and infrastructure elements in your IT environment.

To be able to generate reports, you must configure SHR to gather data from different data sources. This section of the document gives an overview of how different data source integrations work with SHR.

Chapter 1: Integrating with Data Sources for HP Operations Smart Plug-ins

To show reports on the data collected from different enterprise applications, SHR relies on the metrics collected by collectors of HP Operations Smart Plug-ins (SPIs). SPI collectors store the data into the data store provided by the HP Operations agent. SHR's integration with SPI data sources facilitate transfer of data from HP Operations agent's data store to SHR's database.

This integration is established when you deploy SHR in the HPOM deployment scenario.

SHR provides performance reports for the following enterprise applications:

- Microsoft Active Directory
- Microsoft Exchange 2007
- Microsoft Exchange 2010
- Microsoft SQL Server
- Oracle Database
- Oracle WebLogic Server
- IBM WebSphere Application Server

Working of the Integration

1. Installation and configuration of a SPI ensures that necessary instrumentation, scripts, programs, and policies are transferred to a node where the application is running and the HP Operations agent is already installed.

Tip: For successful installation and configuration of SPIs, follow the SPI documentation.

2. SPI collectors start collecting data on the node based on rules and specifications available with the policies deployed on the node.
3. SPI stores the collected data into HP Operations agent's data store. Each SPI creates at least one *data source* in agent's data store.
4. After configuring SHR to collect data from a data source and installing Content Packs, SHR starts collecting historical data from agent's data store.

Tip: Procedures to configure SHR to collect data from the SPI data sources and installing Content Packs are available in the *SHR Installation and Configuration Guide*.

Prerequisites for Generating SHR Reports from the HP Operations SPIs Data

Ensure the following prerequisites are met before integrating SHR with HP Operations SPIs. Otherwise, blank SHR reports will be generated:

- **Ensure data is logging into the HP Operations SPIs data store.**
 - a. Ensure HP Operations SPIs is installed and configured. For further information on deploying and configuring HP Operations SPIs, see the reference documents mentioned for each HP Operations SPIs in individual chapters of this book.
 - b. Ensure all necessary HP Operations SPIs policies are deployed correctly.
 - c. Ensure HP Operations SPIs collector is logging metrics into HP Performance agent database. For details on verifying that HP Operations SPIs is logging metrics into database, see the *HP Service Health Reporter Troubleshooting Guide*.

Note: If any of the preconditions are not fulfilled by the HP Operations SPIs, SHR cannot gather the necessary information from the data source and reports will not generate.

- **Ensure SHR is configured for HP Operations SPIs data store.**
 - a. Ensure the topology source (HPOM or RTSM) is configured to collect fact metrics from the data store of HP Operations SPIs. Verify this from the SHR Administration Console -> Topology Configuration -> Test Connection (which should be successful). For more information, see "*Configuring SHR*" in the *HP Service Health Reporter Installation and Configuration Guide*.
 - b. Ensure the SHR Content Packs relevant to the HP Operations SPIs are installed. Verify this from the SHR Administration Console -> Administration -> Deployment Manager; you will see a column that indicates the deployment status of the content pack.

Note: If the HP Operations SPIs data store is not configured for SHR, it cannot gather the necessary information from the data source and reports will not generate.

Each SHR report uses a specific set of HP Operations SPIs metrics available in HP Operations agent's data store. Collection of metric data is governed by the HP Operations SPIs policies deployed on the node. In other words, to be able to view reports of your interest successfully, you must deploy all the prerequisite policies.

The following sections present lists of policies required by each report:

- ["Prerequisite Policies for the Microsoft Exchange Server Reports" below](#)
- ["Prerequisite Policies for the Microsoft Active Directory Reports" on page 11](#)
- ["Prerequisite Policies for the Microsoft SQL Server Reports" on page 14](#)
- ["Prerequisite Policies for the Oracle Database Reports" on page 19](#)
- ["Prerequisite Policies for the Oracle WebLogic Reports" on page 27](#)
- ["Prerequisite Policies for the IBM WebSphere Reports" on page 39](#)

Prerequisite Policies for the Microsoft Exchange Server Reports

The following table lists the Microsoft Exchange SPI policies required by each Microsoft Exchange Server report.

Note: Not every policy should be deployed to every Microsoft Exchange Server node. See the SPI documentation to understand what each policy does and determine which policies are appropriate for the role played by each server. Deploying the policies indiscriminately will result in incorrect messages originating from the node.

In addition, see the SPI documentation for information on how the policies should be deployed and what additional configuration steps may be required.

Report Name	Data Source	Data Class	Required SPI Policy	Policy Configuration Requirement
Exchange Mail Server Summary	EXSPI_DATA	EXSPI_MBSUMMARY	EXSPI-14X Get Mailbox IS Sum Data	Not required; deploy the policy with default settings.
		EXSPI_PFSUMMARY	EXSPI-14X Get Public IS Sum Data	Not required; deploy the policy with default settings.

Report Name	Data Source	Data Class	Required SPI Policy	Policy Configuration Requirement
Exchange Site Executive Summary	EXSPI_DATA	EXSPI_AVAILABILITY	EXSPI-8X/14X Get Exchange Availability	You must change the polling interval of the policy to five minutes.
		EXSPI_HUBTRANSDSN	EXSPI-14X HUB Transport DSN	Not required; deploy the policy with default settings.
		EXSPI_TRANSQ	EXSPI-14X Dc Transport Queues	Not required; deploy the policy with default settings.
		EXSPI_MBSUMMARY	EXSPI-14X Get Mailbox IS Sum Data	Not required; deploy the policy with default settings.
		EXSPI_POP3PERF	EXSPI-14X Dc-POP3 Performance	Not required; deploy the policy with default settings.
		EXSPI_IMAP4PERF	EXSPI-14X Dc-IMAP4 Performance	Not required; deploy the policy with default settings.
Exchange Source and Destination Mails Comparison	EXSPI_DATA	EXSPI_DEST	EXSPI-14X Dc-Get Top Destination Details	Not required; deploy the policy with default settings.
		EXSPI_SOURCE	EXSPI-14X Dc-Get Top Source Details	Not required; deploy the policy with default settings.
Exchange Top N Mail Senders and Recipients	EXSPI_DATA	EXSPI_RECIP	EXSPI-14X Dc-Get Top Recipient Details	Not required; deploy the policy with default settings.
		EXSPI_SENDER	EXSPI-14X Dc-Get Top Sender Details	Not required; deploy the policy with default settings.

Report Name	Data Source	Data Class	Required SPI Policy	Policy Configuration Requirement
Exchange Top N MailBox	EXSPI_DATA	EXSPI_MBDETAIL	EXSPI-14X Get Mailbox Details	Not required; deploy the policy with default settings.
		EXSPI_SENDER	EXSPI-14X Dc-Get Top Sender Details	Not required; deploy the policy with default settings.
		EXSPI_RECIP	EXSPI-14X Dc-Get Top Recipient Details	Not required; deploy the policy with default settings.
Exchange Top N PubFolder	EXSPI_DATA	EXSPI_PFDDETAIL	EXSPI-14X Get Public Folder Details	Not required; deploy the policy with default settings.
Exchange EdgeTransport Queue Details	EXSPI_DATA	EXSPI_TRANSQ	EXSPI-14X Dc Transport Queues	Not required; deploy the policy with default settings.
Exchange EdgeTransport SMTP Details	EXSPI_DATA	EXSPI_SMTPRECV	EXSPI-14X Edge Dc-SMTP Perf Inbound Cnn	Not required; deploy the policy with default settings.
		EXSPI_SMTPESEND	EXSPI-14X Edge Dc-SMTP Perf Outbound Cnn	Not required; deploy the policy with default settings.
Exchange HubTransport SMTP and DSN Details	EXSPI_DATA	EXSPI_SMTPRECV	EXSPI-14X Edge Dc-SMTP Perf Inbound Cnn	Not required; deploy the policy with default settings.
		EXSPI_SMTPESEND	EXSPI-14X Edge Dc-SMTP Perf Outbound Cnn	Not required; deploy the policy with default settings.
		EXSPI_HUBTRANSDSN	EXSPI-14X HUB Transport DSN	Not required; deploy the policy with default settings.

Report Name	Data Source	Data Class	Required SPI Policy	Policy Configuration Requirement
Exchange MailBox Details	EXSPI_DATA	EXSPI_MBDETAIL	EXSPI-14X Get Mailbox Details	Not required; deploy the policy with default settings.
		EXSPI_MBPERF	EXSPI-14X Dc-IS Mailbox Performance	Not required; deploy the policy with default settings.
Exchange MailBox Usage	EXSPI_DATA	EXSPI_PFDETAIL	EXSPI-14X Get Public Folder Details	Not required; deploy the policy with default settings.
		EXSPI_MBDETAIL	EXSPI-14X Get Mailbox Details	Not required; deploy the policy with default settings.
Exchange PubFolder Details	EXSPI_DATA	EXSPI_PFDETAIL	EXSPI-14X Get Public Folder Details	Not required; deploy the policy with default settings.
		EXSPI_PFPERF	EXSPI-14X Dc-IS Public Folder Performance	Not required; deploy the policy with default settings.

Prerequisite Policies for the Microsoft Active Directory Reports

The following table lists the Microsoft Active Directory SPI policies required by each Microsoft Active Directory report.

Note: Not every policy should be deployed to every Microsoft Active Directory node. See *HP Operations Smart Plug-in for Microsoft Active Directory Reference Guide* and/or the *HP Operations Smart Plug-in for Microsoft Active Directory Online Help* to understand what each policy does and determine which policies are appropriate for the role played by each server. Deploying the policies indiscriminately will result in incorrect messages originating from the node.

In addition, see the SPI documentation for information on how the policies should be deployed and what additional configuration steps may be required.

Report Name	Data Source	Data Class	Required SPI Policy	Policy Configuration Requirement
AD Adhoc Comparison	ADSPI	ADSPI_DITDBSIZE	ADSPI-DIT_TotalDitSize	Not required; deploy the policy with default settings.
		ADSPI_DITQUEUELENGTH	ADSPI-DIT_DITQueueLength	Not required; deploy the policy with default settings.
		ADSPI_LOGDISKSIZE	ADSPI-DIT_LogFilesPercentFull	Not required; deploy the policy with default settings.
		ADSPI_REPLATENCY	ADSPIRep_MonitorIntraSiteReplication,	Not required; deploy the policy with default settings.
			ADSPI-Rep_MonitorInterSiteReplication	Not required; deploy the policy with default settings.
AD Availability	ADSPI	ADSPI_RESPONSETIME	ADSPI-Response_Logging	Not required; deploy the policy with default settings.
FSMO Role Holder	ADSPI	ADSPI_FSMO_ROLEMVMТ	ADSPI-FSMO_RoleMvmt	Not required; deploy the policy with default settings.
DC-GC Replication Delay	ADSPI	ADSPI_REPLATENCY	ADSPIRep_MonitorIntraSiteReplication	Not required; deploy the policy with default settings.
			ADSPI-Rep_MonitorInterSiteReplication	Not required; deploy the policy with default settings.

Report Name	Data Source	Data Class	Required SPI Policy	Policy Configuration Requirement
DC Capacity	ADSPI	ADSPI_DITDBSIZE	ADSPI-DIT_TotalDitSize	Not required; deploy the policy with default settings.
		ADSPI_DITQUEUELENGTH	ADSPI-DIT_DITQueueLength	Not required; deploy the policy with default settings.
		ADSPI_LOGDISKSIZE	ADSPI-DIT_LogFilesPercentFull	Not required; deploy the policy with default settings.
		ADSPI_NTDSP	ADSPI_Logging	Not required; deploy the policy with default settings.
DC Health	ADSPI	ADSPI_DITDBSIZE	ADSPI-DIT_TotalDitSize	Not required; deploy the policy with default settings.
		ADSPI_DITQUEUELENGTH	ADSPI-DIT_DITQueueLength	Not required; deploy the policy with default settings.
		ADSPI_NTDSP	ADSPI_Logging	Not required; deploy the policy with default settings.
		ADSPI_REPLATENCY	ADSPIRep_MonitorIntraSiteReplication	Not required; deploy the policy with default settings.
			ADSPI-Rep_MonitorInterSiteReplication	Not required; deploy the policy with default settings.

Prerequisite Policies for the Microsoft SQL Server Reports

The following table lists the Microsoft SQL Server SPI policies required by each Microsoft SQL Server report.

Note: See the SPI documentation for information on how the policies should be deployed and what additional configuration steps may be required.

Report Name	Data Source	Data Class	SPI Policy	Policy Configuration Requirement
MSSQL Database and Virtual Device Space Usage Top N	DBSPI_MSS_REPORT	DBSPI_MSS_REPORT	<ul style="list-style-type: none"> • Scheduled task policy <ul style="list-style-type: none"> ▪ DBSPI-MSS-1d-Reporter • Measurement threshold policy <ul style="list-style-type: none"> ▪ M240_DBSize ▪ M242_VirtDeSize 	Not required; deploy the policy with default settings.

Report Name	Data Source	Data Class	SPI Policy	Policy Configuration Requirement
<p>MSSQL Performance Summary</p>	<p>DBSPI_MSS_GRAPH</p>	<p>DBSPI_MSS_GRAPH</p>	<ul style="list-style-type: none"> • Scheduled task policy <ul style="list-style-type: none"> ▪ DBSPI-MSS-1h ▪ DBSPI-MSS-05min • Measurement threshold policy <ul style="list-style-type: none"> ▪ DBSPI-3001 ▪ DBSPI-3025 ▪ DBSPI-3013 ▪ DBSPI-3009 ▪ DBSPI-3008 	<p>Not required; deploy the policy with default settings.</p>
<p>MSSQL Table Space Usage Top N</p>	<p>DBSPI_MSS_GRAPH</p>	<p>DBSPI_MSS_GRAPH</p>	<ul style="list-style-type: none"> • Scheduled task policy <ul style="list-style-type: none"> ▪ DBSPI-MSS-1d-Reporter • Measurement threshold policy <ul style="list-style-type: none"> ▪ M241_TableSize 	<p>Not required; deploy the policy with default settings.</p>

Report Name	Data Source	Data Class	SPI Policy	Policy Configuration Requirement
MSSQL Database Input and Output Statistics	DBSPI_MSS_GRAPH	DBSPI_MSS_GRAPH	<ul style="list-style-type: none"> • Scheduled task policy <ul style="list-style-type: none"> ▪ DBSPI-MSS-1h • Measurement threshold policy <ul style="list-style-type: none"> ▪ DBSPI-3007 ▪ DBSPI-3008 	Not required; deploy the policy with default settings.
MSSQL Database Locks Summary	DBSPI_MSS_GRAPH	DBSPI_MSS_GRAPH	<ul style="list-style-type: none"> • Scheduled task policy <ul style="list-style-type: none"> ▪ DBSPI-MSS-1h ▪ DBSPI-MSS-05min • Measurement threshold policy <ul style="list-style-type: none"> ▪ DBSPI-3013 ▪ DBSPI-3071 ▪ DBSPI-3070 ▪ DBSPI-3072 ▪ DBSPI-3075 	Not required; deploy the policy with default settings.

Report Name	Data Source	Data Class	SPI Policy	Policy Configuration Requirement
MSSQL Database Performance Summary	DBSPI_MSS_GRAPH	DBSPI_MSS_GRAPH	<ul style="list-style-type: none"> • Scheduled task policy <ul style="list-style-type: none"> ▪ DBSPI-MSS-1h • Measurement threshold policy <ul style="list-style-type: none"> ▪ DBSPI-3023 ▪ DBSPI-3024 ▪ DBSPI-3053 ▪ DBSPI-3054 ▪ DBSPI-3051 ▪ DBSPI-3052 	Not required; deploy the policy with default settings.
MSSQL Database Space Usage Details	DBSPI_MSS_REPORT	DBSPI_MSS_REPORT	<ul style="list-style-type: none"> • Scheduled task policy <ul style="list-style-type: none"> ▪ DBSPI-MSS-1d-Reporter • Measurement threshold policy <ul style="list-style-type: none"> ▪ M240_DBSize 	Not required; deploy the policy with default settings.
MSSQL Database Table Space Usage Details	DBSPI_MSS_REPORT	DBSPI_MSS_REPORT	<ul style="list-style-type: none"> • Scheduled task policy <ul style="list-style-type: none"> ▪ DBSPI-MSS-1d-Reporter • Measurement threshold policy <ul style="list-style-type: none"> ▪ M241_TableSize 	Not required; deploy the policy with default settings.

Report Name	Data Source	Data Class	SPI Policy	Policy Configuration Requirement
MSSQL Instance Availability Details	DBSPI_MSS_REPORT	DBSPI_MSS_REPORT	<ul style="list-style-type: none"> • Scheduled task policy <ul style="list-style-type: none"> ▪ DBSPI-MSS-05min-Reporter • Measurement threshold policy <ul style="list-style-type: none"> ▪ M243_Inst.UptimeM 	Not required; deploy the policy with default settings.
MSSQL Server Transaction Summary	DBSPI_MSS_GRAPH	DBSPI_MSS_GRAPH	<ul style="list-style-type: none"> • Scheduled task policy <ul style="list-style-type: none"> ▪ DBSPI-MSS-1h • Measurement threshold policy <ul style="list-style-type: none"> ▪ DBSPI-3064 ▪ DBSPI-3066 ▪ DBSPI-3067 	Not required; deploy the policy with default settings.
MSSQL Users Connection Summary	DBSPI_MSS_GRAPH	DBSPI_MSS_GRAPH	<ul style="list-style-type: none"> • Scheduled task policy <ul style="list-style-type: none"> ▪ DBSPI-MSS-1h • Measurement threshold policy <ul style="list-style-type: none"> ▪ M031_NumUsersCnt ▪ DBSPI-3032 ▪ DBSPI-3026 	Not required; deploy the policy with default settings.

Prerequisite Policies for the Oracle Database Reports

The following table lists the Oracle database SPI policies required by each Oracle database report.

Report Name	Data Source	Data Class	SPI Policy	Policy Configuration Requirement
Database Oracle Executive Summary	DBSPI_ORA_REPORT	DBSPI_ORA_REPORT	<ul style="list-style-type: none"> • Scheduled task policy <ul style="list-style-type: none"> ▪ DBSPI-Ora-05min-Reporter (for UNIX/Linux nodes) ▪ DBSPI-Ora-05min-Reporter-NT (for Windows nodes) • Measurement threshold policy <ul style="list-style-type: none"> ▪ E201_InstUptime 	Not required; deploy the policy with default settings.
Database Oracle Top 10 Instances and Tablespaces	DBSPI_ORA_REPORT	DBSPI_ORA_REPORT	<ul style="list-style-type: none"> • Scheduled task policy <ul style="list-style-type: none"> ▪ DBSPI-Ora-05min-Reporter (for UNIX/Linux nodes) ▪ DBSPI-Ora-1d-Reporter (for UNIX/Linux nodes) ▪ DBSPI-Ora-05min-Reporter-NT (for Windows nodes) ▪ DBSPI-Ora-1d-Reporter-NT (for Windows nodes) • Measurement threshold policy <ul style="list-style-type: none"> ▪ E201_InstUptime ▪ E210_TblSpcSize ▪ E212_Inst Size 	Not required; deploy the policy with default settings.

Report Name	Data Source	Data Class	SPI Policy	Policy Configuration Requirement
Database Oracle Top 5 Instances Load and Efficiency	DBSPI_ ORA_ GRAPH	DBSPI_ ORA_ GRAPH	<ul style="list-style-type: none"> • Scheduled task policy <ul style="list-style-type: none"> ▪ DBSPI-Ora-05min-Favorites ▪ DBSPI-Ora-Add-Ons-05min ▪ DBSPI-Ora-05min-SQLNet ▪ DBSPI-Ora-1h-Favorites ▪ DBSPI-Ora-1h-SQLNet ▪ DBSPI-Ora-05min-Favorites • Measurement threshold policy <ul style="list-style-type: none"> ▪ E021_BufferBusyPct ▪ E022_TotBufCacHitPct ▪ E039_LibCacGetHitPct ▪ E032_REDOLGSPCREQCNT ▪ E019_SortDiskRate ▪ E020_SortMemoryPct ▪ E037_UserLogonCnt ▪ E049_USERCALLRATE 	Not required; deploy the policy with default settings.

Report Name	Data Source	Data Class	SPI Policy	Policy Configuration Requirement
Database Oracle Archive Device Detail	DBSPI_ORA_GRAPH	DBSPI_ORA_GRAPH	<ul style="list-style-type: none"> • Scheduled task policy <ul style="list-style-type: none"> ▪ DBSPI-Ora-15min-Favorites ▪ DBSPI-Ora-05min-Favorites ▪ DBSPI-Ora-05min-SQLNet ▪ DBSPI-Ora-Add-Ons-15min ▪ DBSPI-Ora-Add-Ons-15min-NT (for Windows nodes) • Measurement threshold policy <ul style="list-style-type: none"> ▪ E058_ArchvFreeSpcPct ▪ E060_RedoUnarchvdCnt ▪ E062_BkgrDumpSpcePct ▪ E063_TraceFileAddCnt ▪ E064_UserDumpSpacPct ▪ E065_CoreDumpSpacPct 	Not required; deploy the policy with default settings.

Report Name	Data Source	Data Class	SPI Policy	Policy Configuration Requirement
Database Oracle Disk And Memory Sort Detail	DBSPI_ORA_GRAPH	DBSPI_ORA_GRAPH	<ul style="list-style-type: none"> • Scheduled task policy <ul style="list-style-type: none"> ▪ DBSPI-Ora-1h-Favorites ▪ DBSPI-Ora-1h-SQLNet ▪ DBSPI-Ora-Add-Ons-05min ▪ DBSPI-Ora-05min-SQLNet ▪ DBSPI-Ora-Add-Ons-1h ▪ DBSPI-Ora-1h-SQLNet ▪ DBSPI-Ora-Add-Ons-1h-NT • Measurement threshold policy <ul style="list-style-type: none"> ▪ E019_SortDiskRate ▪ E020_SortMemoryPct ▪ E052_SortTotalRate 	Not required; deploy the policy with default settings.
Database Oracle Instance Availability Detail	DBSPI_ORA_REPORT	DBSPI_ORA_REPORT	<ul style="list-style-type: none"> • Scheduled task policy <ul style="list-style-type: none"> • DBSPI-Ora-05min-Reporter (for UNIX/Linux nodes) • DBSPI-Ora-05min-Reporter-NT (for Windows nodes) • Measurement threshold policy <ul style="list-style-type: none"> ▪ E201_InstUptime 	Not required; deploy the policy with default settings.

Report Name	Data Source	Data Class	SPI Policy	Policy Configuration Requirement
Database Oracle Instance Space Utilization Detail	DBSPI_ORA_REPORT	DBSPI_ORA_REPORT	<ul style="list-style-type: none"> • Scheduled task policy <ul style="list-style-type: none"> ▪ DBSPI-Ora-1d-Reporter (for UNIX/Linux nodes) ▪ DBSPI-Ora-1d-Reporter-NT (for Windows nodes) • Measurement threshold policy <ul style="list-style-type: none"> ▪ E212_Inst Size 	Not required; deploy the policy with default settings.
Database Oracle Segment Detail	DBSPI_ORA_GRAPH	DBSPI_ORA_GRAPH	<ul style="list-style-type: none"> • Scheduled task policy <ul style="list-style-type: none"> ▪ DBSPI-Ora-15min-SQLNet ▪ DBSPI-Ora-15min-Favorites ▪ DBSPI-Ora-05min-Favorites ▪ DBSPI-Ora-05min-SQLNet • Measurement threshold policy <ul style="list-style-type: none"> ▪ E016_SegmntExtendCnt ▪ E017_SegMaxExtentCnt ▪ E018_SegExtRapidCnt ▪ E067_RBSegmntStatCnt 	Not required; deploy the policy with default settings.

Report Name	Data Source	Data Class	SPI Policy	Policy Configuration Requirement
Database Oracle Shared Pool and Cache Performance Detail	DBSPI_ORA_GRAPH	DBSPI_ORA_GRAPH	<ul style="list-style-type: none"> • Scheduled task policy <ul style="list-style-type: none"> ▪ DBSPI-Ora-05min-Favorites ▪ DBSPI-Ora-Add-Ons-05min ▪ DBSPI-Ora-05min-SQLNet ▪ DBSPI-Ora-Add-Ons-05min-NT ▪ DBSPI-Ora-05min-SQLNet • Measurement threshold policy <ul style="list-style-type: none"> ▪ E021_BufferBusyPct ▪ E022_TotBufCacHitPct ▪ E039_LibCacGetHitPct ▪ E026_DictCacheHitPct ▪ E040_LibCacPinHitPct ▪ E045_ShrdPoolFreePct 	Not required; deploy the policy with default settings.

Report Name	Data Source	Data Class	SPI Policy	Policy Configuration Requirement
Database Oracle SQL Performance Detail	DBSPI_ORA_GRAPH	DBSPI_ORA_GRAPH	<ul style="list-style-type: none"> • Scheduled task policy <ul style="list-style-type: none"> ▪ DBSPI-Ora-05min-Favorites ▪ DBSPI-Ora-05min-SQLNet ▪ DBSPI-Ora-Add-Ons-1h-NT ▪ DBSPI-Ora-1h-SQLNet ▪ DBSPI-0070 ▪ DBSPI-0071 ▪ DBSPI-0074 ▪ DBSPI-0076 • Measurement threshold policy <ul style="list-style-type: none"> ▪ E030_FulLgTblScnRate ▪ E046_RowFetcByIdxPct ▪ E070_PQServrsBusyPct ▪ E071_PQSrvHighwtrPct ▪ E074_PQQueryRate ▪ E076_PQRangeScanPct 	Not required; deploy the policy with default settings.

Report Name	Data Source	Data Class	SPI Policy	Policy Configuration Requirement
Database Oracle Tablespace Detail	DBSPI_ORA_GRAPH	DBSPI_ORA_GRAPH	<ul style="list-style-type: none"> • Scheduled task policy <ul style="list-style-type: none"> ▪ DBSPI-Ora-05min-Favorites ▪ DBSPI-Ora-05min-SQLNet ▪ DBSPI-0006 ▪ DBSPI-Ora-1h-Favorites ▪ DBSPI-Ora-1h-SQLNet ▪ DBSPI-Ora-Add-Ons-05min ▪ DBSPI-Ora-Add-Ons-05min-NT • Measurement threshold policy <ul style="list-style-type: none"> ▪ E007_TblSpcStatusCnt ▪ E006_TblSpFreePctCnt ▪ E008_TSBReadRatioCnt ▪ E004_UsersTmpDfltCnt ▪ E005_ObjectsForeignCnt ▪ E011_TblSpcFrgmntCnt 	Not required; deploy the policy with default settings.

Report Name	Data Source	Data Class	SPI Policy	Policy Configuration Requirement
Database Oracle Tablespace Space Utilization Detail	DBSPI_ORA_REPORT	DBSPI_ORA_REPORT	<ul style="list-style-type: none"> • Scheduled task policy <ul style="list-style-type: none"> ▪ DBSPI-Ora-1d-Reporter (for UNIX/Linux nodes) ▪ DBSPI-Ora-1d-Reporter-NT (for Windows nodes) • Measurement threshold policy <ul style="list-style-type: none"> ▪ E210_TblSpcSize 	Not required; deploy the policy with default settings.

Prerequisite Policies for the Oracle WebLogic Reports

The following table lists the Oracle WebLogic SPI policies required by each Oracle WebLogic report.

Report Name	Data Source	Data Class	Required SPI Policy	Policy Configuration Requirement
WebLogic Servlet Performance Summary	WLSSPI	WLSSPI_METRICS	<ul style="list-style-type: none"> • WLSSPI_0011 • WLSSPI_0035 • WLSSPI_0036 • WLSSPI_0025 • WLSSPI_0026 • WLSSPI_0005 • WLSSPI_0012 • WLSSPI_0014 • WLSSPI_0061 • WLSSPI_0283 • WLSSPI_0284 • WLSSPI_0285 • WLSSPI_0286 • WLSSPI_0287 • WLSSPI_0288 • WLSSPI_0823 • WLSSPI_0819 	Not required; deploy the policy with default settings.

Report Name	Data Source	Data Class	Required SPI Policy	Policy Configuration Requirement
WebLogic Top N Summary	WLSSPI	WLSSPI_METRICS WLSSPI_RPT_METRICS	<ul style="list-style-type: none"> • WLSSPI_0011 • WLSSPI_0035 • WLSSPI_0036 • WLSSPI_0025 • WLSSPI_0026 • WLSSPI_0005 • WLSSPI_0012 • WLSSPI_0014 • WLSSPI_0061 • WLSSPI_0283 • WLSSPI_0284 • WLSSPI_0285 • WLSSPI_0286 • WLSSPI_0287 • WLSSPI_0288 • WLSSPI_0823 • WLSSPI_0819 • WLSSPI_0072 • WLSSPI_0073 • WLSSPI_0074 • WLSSPI_0075 • WLSSPI_0079 • WLSSPI_0263 • WLSSPI_0265 	Not required; deploy the policy with default settings.

Report Name	Data Source	Data Class	Required SPI Policy	Policy Configuration Requirement
			<ul style="list-style-type: none"> • WLSSPI_0238 • WLSSPI_0278 • WLSSPI_0251 • WLSSPI_0252 • WLSSPI_0253 • WLSSPI_0254 • WLSSPI_0224 • WLSSPI_0245 • WLSSPI_0001 • WLSSPI_0070 • WLSSPI_0071 • WLSSPI_0240 • WLSSPI_0242 • WLSSPI_0260 	

Report Name	Data Source	Data Class	Required SPI Policy	Policy Configuration Requirement
WebLogic JDBC Connection Pool Summary	WLSSPI	WLSSPI_RPT_METRICS	<ul style="list-style-type: none"> • WLSSPI_0072 • WLSSPI_0073 • WLSSPI_0074 • WLSSPI_0075 • WLSSPI_0079 • WLSSPI_0263 • WLSSPI_0265 • WLSSPI_0238 • WLSSPI_0278 • WLSSPI_0251 • WLSSPI_0252 • WLSSPI_0253 • WLSSPI_0254 • WLSSPI_0224 • WLSSPI_0245 • WLSSPI_0001 • WLSSPI_0070 • WLSSPI_0071 • WLSSPI_0240 • WLSSPI_0242 • WLSSPI_0260 	Not required; deploy the policy with default settings.

Report Name	Data Source	Data Class	Required SPI Policy	Policy Configuration Requirement
WebLogic Executive Summary	WLSSPI	WLSSPI_RPT_METRICS	<ul style="list-style-type: none"> • WLSSPI_0072 • WLSSPI_0073 • WLSSPI_0074 • WLSSPI_0075 • WLSSPI_0079 • WLSSPI_0263 • WLSSPI_0265 • WLSSPI_0238 • WLSSPI_0278 • WLSSPI_0251 • WLSSPI_0252 • WLSSPI_0253 • WLSSPI_0254 • WLSSPI_0224 • WLSSPI_0245 • WLSSPI_0001 • WLSSPI_0070 • WLSSPI_0071 • WLSSPI_0240 • WLSSPI_0242 • WLSSPI_0260 	Not required; deploy the policy with default settings.

Report Name	Data Source	Data Class	Required SPI Policy	Policy Configuration Requirement
WebLogic JMS Performance Details	WLSSPI	WLSSPI_RPT_METRICS	<ul style="list-style-type: none"> • WLSSPI_0072 • WLSSPI_0073 • WLSSPI_0074 • WLSSPI_0075 • WLSSPI_0079 • WLSSPI_0263 • WLSSPI_0265 • WLSSPI_0238 • WLSSPI_0278 • WLSSPI_0251 • WLSSPI_0252 • WLSSPI_0253 • WLSSPI_0254 • WLSSPI_0224 • WLSSPI_0245 • WLSSPI_0001 • WLSSPI_0070 • WLSSPI_0071 • WLSSPI_0240 • WLSSPI_0242 • WLSSPI_0260 	Not required; deploy the policy with default settings.

Report Name	Data Source	Data Class	Required SPI Policy	Policy Configuration Requirement
WebLogic EJB Cache Hit	WLSSPI	WLSSPI_METRICS WLSSPI_RPT_METRICS	<ul style="list-style-type: none"> • WLSSPI_0011 • WLSSPI_0035 • WLSSPI_0036 • WLSSPI_0025 • WLSSPI_0026 • WLSSPI_0005 • WLSSPI_0012 • WLSSPI_0014 • WLSSPI_0061 • WLSSPI_0283 • WLSSPI_0284 • WLSSPI_0285 • WLSSPI_0286 • WLSSPI_0287 • WLSSPI_0288 • WLSSPI_0823 • WLSSPI_0819 • WLSSPI_0072 • WLSSPI_0073 • WLSSPI_0074 • WLSSPI_0075 • WLSSPI_0079 • WLSSPI_0263 • WLSSPI_0265 	Not required; deploy the policy with default settings.

Report Name	Data Source	Data Class	Required SPI Policy	Policy Configuration Requirement
			<ul style="list-style-type: none"> • WLSSPI_0238 • WLSSPI_0278 • WLSSPI_0251 • WLSSPI_0252 • WLSSPI_0253 • WLSSPI_0254 • WLSSPI_0224 • WLSSPI_0245 • WLSSPI_0001 • WLSSPI_0070 • WLSSPI_0071 • WLSSPI_0240 • WLSSPI_0242 • WLSSPI_0260 	

Report Name	Data Source	Data Class	Required SPI Policy	Policy Configuration Requirement
WebLogic JVM Utilization	WLSSPI	WLSSPI_METRICS	<ul style="list-style-type: none"> • WLSSPI_0011 • WLSSPI_0035 • WLSSPI_0036 • WLSSPI_0025 • WLSSPI_0026 • WLSSPI_0005 • WLSSPI_0012 • WLSSPI_0014 • WLSSPI_0061 • WLSSPI_0283 • WLSSPI_0284 • WLSSPI_0285 • WLSSPI_0286 • WLSSPI_0287 • WLSSPI_0288 • WLSSPI_0823 • WLSSPI_0819 	Not required; deploy the policy with default settings.

Report Name	Data Source	Data Class	Required SPI Policy	Policy Configuration Requirement
WebLogic Server Availability Details	WLSSPI	WLSSPI_RPT_METRICS	<ul style="list-style-type: none"> • WLSSPI_0072 • WLSSPI_0073 • WLSSPI_0074 • WLSSPI_0075 • WLSSPI_0079 • WLSSPI_0263 • WLSSPI_0265 • WLSSPI_0238 • WLSSPI_0278 • WLSSPI_0251 • WLSSPI_0252 • WLSSPI_0253 • WLSSPI_0254 • WLSSPI_0224 • WLSSPI_0245 • WLSSPI_0001 • WLSSPI_0070 • WLSSPI_0071 • WLSSPI_0240 • WLSSPI_0242 • WLSSPI_0260 	Not required; deploy the policy with default settings.

Report Name	Data Source	Data Class	Required SPI Policy	Policy Configuration Requirement
WebLogic Transaction Performance Details	WLSSPI	WLSSPI_METRICS WLSSPI_RPT_METRICS	<ul style="list-style-type: none"> • WLSSPI_0011 • WLSSPI_0035 • WLSSPI_0036 • WLSSPI_0025 • WLSSPI_0026 • WLSSPI_0005 • WLSSPI_0012 • WLSSPI_0014 • WLSSPI_0061 • WLSSPI_0283 • WLSSPI_0284 • WLSSPI_0285 • WLSSPI_0286 • WLSSPI_0287 • WLSSPI_0288 • WLSSPI_0823 • WLSSPI_0819 • WLSSPI_0072 • WLSSPI_0073 • WLSSPI_0074 • WLSSPI_0075 • WLSSPI_0079 • WLSSPI_0263 • WLSSPI_0265 	Not required; deploy the policy with default settings.

Report Name	Data Source	Data Class	Required SPI Policy	Policy Configuration Requirement
			<ul style="list-style-type: none"> • WLSSPI_0238 • WLSSPI_0278 • WLSSPI_0251 • WLSSPI_0252 • WLSSPI_0253 • WLSSPI_0254 • WLSSPI_0224 • WLSSPI_0245 • WLSSPI_0001 • WLSSPI_0070 • WLSSPI_0071 • WLSSPI_0240 • WLSSPI_0242 • WLSSPI_0260 	

Prerequisite Policies for the IBM WebSphere Reports

The following table lists the IBM WebSphere SPI policies required by each IBM WebSphere report.

Report Name	Data Source	Data Class	Required SPI Policy	Policy Configuration Requirement
WebSphere Top N summary	WBSS PI	WBSSPI_METRICS WBSSPI_RPT_METRICS	<ul style="list-style-type: none"> • WBSSPI_0040 • WBSSPI_0042 • WBSSPI_0026 • WBSSPI_0810 • WBSSPI_0811 • WBSSPI_0814 • WBSSPI_0807 • WBSSPI_0808 • WBSSPI_0809 • WBSSPI_0013 • WBSSPI_0812 • WBSSPI_0813 • WBSSPI_0045 • WBSSPI_0048 • WBSSPI_0074 • WBSSPI_0072 • WBSSPI_0073 • WBSSPI_0075 • WBSSPI_0077 • WBSSPI_0078 • WBSSPI_0076 • WBSSPI_0005 • WBSSPI_0807 • WBSSPI_0041 • WBSSPI_0260 	Not required; deploy the policy with default settings.

Report Name	Data Source	Data Class	Required SPI Policy	Policy Configuration Requirement
			<ul style="list-style-type: none"> • WBSSPI_0261 • WBSSPI_0262 • WBSSPI_0265 • WBSSPI_0266 • WBSSPI_0221 • WBSSPI_0220 • WBSSPI_0001 • WBSSPI_0077 • WBSSPI_0073 • WBSSPI_0246 • WBSSPI_0245 • WBSSPI_0263 	

Report Name	Data Source	Data Class	Required SPI Policy	Policy Configuration Requirement
WebSphere Servlet Performance Overview	WBSS PI	WBSSPI_METRICS WBSSPI_RPT_METRICS	<ul style="list-style-type: none"> • WBSSPI_0040 • WBSSPI_0042 • WBSSPI_0026 • WBSSPI_0810 • WBSSPI_0811 • WBSSPI_0814 • WBSSPI_0807 • WBSSPI_0808 • WBSSPI_0809 • WBSSPI_0013 • WBSSPI_0812 • WBSSPI_0813 • WBSSPI_0045 • WBSSPI_0048 • WBSSPI_0074 • WBSSPI_0072 • WBSSPI_0073 • WBSSPI_0075 • WBSSPI_0077 • WBSSPI_0078 • WBSSPI_0076 • WBSSPI_0005 • WBSSPI_0807 • WBSSPI_0041 • WBSSPI_0260 	Not required; deploy the policy with default settings.

Report Name	Data Source	Data Class	Required SPI Policy	Policy Configuration Requirement
			<ul style="list-style-type: none"> • WBSSPI_0261 • WBSSPI_0262 • WBSSPI_0265 • WBSSPI_0266 • WBSSPI_0221 • WBSSPI_0220 • WBSSPI_0001 • WBSSPI_0077 • WBSSPI_0073 • WBSSPI_0246 • WBSSPI_0245 • WBSSPI_0263 	

Report Name	Data Source	Data Class	Required SPI Policy	Policy Configuration Requirement
WebSphere Thread Pool Performance Overview	WBSS PI	WBSSPI_METRICS WBSSPI_RPT_METRICS	<ul style="list-style-type: none"> • WBSSPI_0040 • WBSSPI_0042 • WBSSPI_0026 • WBSSPI_0810 • WBSSPI_0811 • WBSSPI_0814 • WBSSPI_0807 • WBSSPI_0808 • WBSSPI_0809 • WBSSPI_0013 • WBSSPI_0812 • WBSSPI_0813 • WBSSPI_0045 • WBSSPI_0048 • WBSSPI_0074 • WBSSPI_0072 • WBSSPI_0073 • WBSSPI_0075 • WBSSPI_0077 • WBSSPI_0078 • WBSSPI_0076 • WBSSPI_0005 • WBSSPI_0807 • WBSSPI_0041 • WBSSPI_0260 	Not required; deploy the policy with default settings.

Report Name	Data Source	Data Class	Required SPI Policy	Policy Configuration Requirement
			<ul style="list-style-type: none"> • WBSSPI_0261 • WBSSPI_0262 • WBSSPI_0265 • WBSSPI_0266 • WBSSPI_0221 • WBSSPI_0220 • WBSSPI_0001 • WBSSPI_0077 • WBSSPI_0073 • WBSSPI_0246 • WBSSPI_0245 • WBSSPI_0263 	

Report Name	Data Source	Data Class	Required SPI Policy	Policy Configuration Requirement
WebSphere Executive Summary	WBSS PI	WBSSPI_RPT_METRICS	<ul style="list-style-type: none"> • WBSSPI_0041 • WBSSPI_0260 • WBSSPI_0261 • WBSSPI_0262 • WBSSPI_0265 • WBSSPI_0266 • WBSSPI_0221 • WBSSPI_0220 • WBSSPI_0001 • WBSSPI_0077 • WBSSPI_0073 • WBSSPI_0246 • WBSSPI_0245 • WBSSPI_0263 	Not required; deploy the policy with default settings.

Report Name	Data Source	Data Class	Required SPI Policy	Policy Configuration Requirement
WebSphere Servlet Performance Details	WBSS PI	WBSSPI_RPT_METRICS	<ul style="list-style-type: none"> • WBSSPI_0041 • WBSSPI_0260 • WBSSPI_0261 • WBSSPI_0262 • WBSSPI_0265 • WBSSPI_0266 • WBSSPI_0221 • WBSSPI_0220 • WBSSPI_0001 • WBSSPI_0077 • WBSSPI_0073 • WBSSPI_0246 • WBSSPI_0245 • WBSSPI_0263 	Not required; deploy the policy with default settings.

Report Name	Data Source	Data Class	Required SPI Policy	Policy Configuration Requirement
WebSphere Server Availability Details	WBSS PI	WBSSPI_RPT_METRICS	<ul style="list-style-type: none"> • WBSSPI_0041 • WBSSPI_0260 • WBSSPI_0261 • WBSSPI_0262 • WBSSPI_0265 • WBSSPI_0266 • WBSSPI_0221 • WBSSPI_0220 • WBSSPI_0001 • WBSSPI_0077 • WBSSPI_0073 • WBSSPI_0246 • WBSSPI_0245 • WBSSPI_0263 	Not required; deploy the policy with default settings.

Report Name	Data Source	Data Class	Required SPI Policy	Policy Configuration Requirement
WebSphere Transaction Performance Details	WBSS PI	WBSSPI_METRICS	<ul style="list-style-type: none"> • WBSSPI_0040 • WBSSPI_0042 • WBSSPI_0026 • WBSSPI_0810 • WBSSPI_0811 • WBSSPI_0814 • WBSSPI_0807 • WBSSPI_0808 • WBSSPI_0809 • WBSSPI_0013 • WBSSPI_0812 • WBSSPI_0813 • WBSSPI_0045 • WBSSPI_0048 • WBSSPI_0074 • WBSSPI_0072 • WBSSPI_0073 • WBSSPI_0075 • WBSSPI_0077 • WBSSPI_0078 • WBSSPI_0076 • WBSSPI_0005 • WBSSPI_0807 	Not required; deploy the policy with default settings.

Report Name	Data Source	Data Class	Required SPI Policy	Policy Configuration Requirement
WebSphere JVM Utilization Details	WBSS PI	WBSSPI_METRICS	<ul style="list-style-type: none"> • WBSSPI_0040 • WBSSPI_0042 • WBSSPI_0026 • WBSSPI_0810 • WBSSPI_0811 • WBSSPI_0814 • WBSSPI_0807 • WBSSPI_0808 • WBSSPI_0809 • WBSSPI_0013 • WBSSPI_0812 • WBSSPI_0813 • WBSSPI_0045 • WBSSPI_0048 • WBSSPI_0074 • WBSSPI_0072 • WBSSPI_0073 • WBSSPI_0075 • WBSSPI_0077 • WBSSPI_0078 • WBSSPI_0076 • WBSSPI_0005 • WBSSPI_0807 	Not required; deploy the policy with default settings.

Report Name	Data Source	Data Class	Required SPI Policy	Policy Configuration Requirement
WebSphere JDBC Pool Throughput and Wait Time Details	WBSS PI	WBSSPI_METRICS WBSSPI_RPT_METRICS	<ul style="list-style-type: none"> • WBSSPI_0040 • WBSSPI_0042 • WBSSPI_0026 • WBSSPI_0810 • WBSSPI_0811 • WBSSPI_0814 • WBSSPI_0807 • WBSSPI_0808 • WBSSPI_0809 • WBSSPI_0013 • WBSSPI_0812 • WBSSPI_0813 • WBSSPI_0045 • WBSSPI_0048 • WBSSPI_0074 • WBSSPI_0072 • WBSSPI_0073 • WBSSPI_0075 • WBSSPI_0077 • WBSSPI_0078 • WBSSPI_0076 • WBSSPI_0005 • WBSSPI_0807 • WBSSPI_0041 • WBSSPI_0260 	Not required; deploy the policy with default settings.

Report Name	Data Source	Data Class	Required SPI Policy	Policy Configuration Requirement
			<ul style="list-style-type: none"> • WBSSPI_0261 • WBSSPI_0262 • WBSSPI_0265 • WBSSPI_0266 • WBSSPI_0221 • WBSSPI_0220 • WBSSPI_0001 • WBSSPI_0077 • WBSSPI_0073 • WBSSPI_0246 • WBSSPI_0245 • WBSSPI_0263 	

Report Name	Data Source	Data Class	Required SPI Policy	Policy Configuration Requirement
WebSphere JDBC Utilization Details	WBSS PI	WBSSPI_METRICS WBSSPI_RPT_METRICS	<ul style="list-style-type: none"> • WBSSPI_0040 • WBSSPI_0042 • WBSSPI_0026 • WBSSPI_0810 • WBSSPI_0811 • WBSSPI_0814 • WBSSPI_0807 • WBSSPI_0808 • WBSSPI_0809 • WBSSPI_0013 • WBSSPI_0812 • WBSSPI_0813 • WBSSPI_0045 • WBSSPI_0048 • WBSSPI_0074 • WBSSPI_0072 • WBSSPI_0073 • WBSSPI_0075 • WBSSPI_0077 • WBSSPI_0078 • WBSSPI_0076 • WBSSPI_0005 • WBSSPI_0807 • WBSSPI_0041 • WBSSPI_0260 	Not required; deploy the policy with default settings.

Report Name	Data Source	Data Class	Required SPI Policy	Policy Configuration Requirement
			<ul style="list-style-type: none"> • WBSSPI_0261 • WBSSPI_0262 • WBSSPI_0265 • WBSSPI_0266 • WBSSPI_0221 • WBSSPI_0220 • WBSSPI_0001 • WBSSPI_0077 • WBSSPI_0073 • WBSSPI_0246 • WBSSPI_0245 • WBSSPI_0263 	

Report Name	Data Source	Data Class	Required SPI Policy	Policy Configuration Requirement
WebSphere EJB Performance Details	WBSS PI	WBSSPI_METRICS WBSSPI_RPT_METRICS	<ul style="list-style-type: none"> • WBSSPI_0040 • WBSSPI_0042 • WBSSPI_0026 • WBSSPI_0810 • WBSSPI_0811 • WBSSPI_0814 • WBSSPI_0807 • WBSSPI_0808 • WBSSPI_0809 • WBSSPI_0013 • WBSSPI_0812 • WBSSPI_0813 • WBSSPI_0045 • WBSSPI_0048 • WBSSPI_0074 • WBSSPI_0072 • WBSSPI_0073 • WBSSPI_0075 • WBSSPI_0077 • WBSSPI_0078 • WBSSPI_0076 • WBSSPI_0005 • WBSSPI_0807 • WBSSPI_0041 • WBSSPI_0260 	Not required; deploy the policy with default settings.

Report Name	Data Source	Data Class	Required SPI Policy	Policy Configuration Requirement
			<ul style="list-style-type: none"> • WBSSPI_0261 • WBSSPI_0262 • WBSSPI_0265 • WBSSPI_0266 • WBSSPI_0221 • WBSSPI_0220 • WBSSPI_0001 • WBSSPI_0077 • WBSSPI_0073 • WBSSPI_0246 • WBSSPI_0245 • WBSSPI_0263 	

Chapter 2: Integrating with Data Sources for HP Operations Manager i Management Packs

To show reports on the data collected from different enterprise applications, SHR relies on the metrics collected by Operations Manager i Management Pack (OMi MP). OMi MP collectors store the data into the data store provided by the HP Performance Agent. SHR's integration with OMi MP data sources facilitates transfer of data from HP Performance Agent's data store to SHR's database.

This integration is established when you deploy SHR views in the RTSM deployment scenario.

SHR provides performance reports for the following enterprise applications:

- OMi MP for Hadoop
- OMi MP for Microsoft Active Directory
- OMi MP for Microsoft SQL Server
- OMi MP for Oracle Database
- OMi MP for Oracle WebLogic
- OMi MP for SAP
- OMi MP for SAP HANA
- OMi MP for Vertica

Working of the Integration

1. Installation and configuration of an OMi MP ensures that necessary instrumentation, scripts, programs, and policies are transferred to a node where the application is running and the HP Performance Agent is already installed.

Tip: For successful installation and configuration of OMi MPs, follow the *OMi MP* documentation.

2. OMi MP collectors start collecting data on the node based on rules and specifications available with the policies deployed on the node.
3. OMi MP stores the collected data into HP Performance Agent's data store. Each OMi MP creates at least one *data source* in agent's data store.
4. After configuring SHR to collect data from a data source and installing Content Packs, SHR starts collecting historical data from agent's data store.

Tip: Procedures to configure SHR to collect data from the OMi MP data sources and installing Content Packs are available in the *SHR Installation and Configuration Guide*.

Prerequisites for Generating SHR Reports from the OMi MP Data

Ensure the following prerequisites are met before integrating SHR with OMi MP. Otherwise, blank SHR reports will be generated:

- **Ensure data is logging into the HP Performance Agent data store.**
 - a. Ensure OMi MP is installed and configured. For further information on deploying and configuring OMi MPs, see the reference documents mentioned for each OMi MP in individual chapters of this book.
 - b. Ensure all necessary OMi MP policies are deployed correctly.
 - c. Ensure OMi MP collector is logging metrics into HP Performance agent database. For details on verifying that OMi MP is logging metrics into database, see the *HP Service Health Reporter Troubleshooting Guide*.

Note: If any of the preconditions are not fulfilled by the OMi MP, SHR cannot gather the necessary information from the data source and blank reports will be generated.

- **Ensure SHR is configured to connect to the Business Service Management (BSM) system where OMi MP is configured.**
 - a. Ensure the topology source (RTSM) is configured to collect fact metrics from the data store of OMi MP. Verify this from the SHR Administration Console -> Topology Configuration -> Test Connection (which should be successful). For more information, see "*Configuring SHR*" in the *HP Service Health Reporter Installation and Configuration Guide*.
 - b. Ensure the SHR Content Packs relevant to the OMi MP are installed. Verify this from the SHR Administration Console -> Administration -> Deployment Manager; you will see a column that indicates the deployment status of the content pack.

Note: If the OMi MP data store is not configured in BSM for SHR's use, it cannot gather the necessary information from the data source and blank reports will be generated.

Each SHR report uses a specific set of OMi MP metrics available in HP Performance Agent's data store. Collection of metric data is governed by the OMi MP policies deployed on the node. In other words, to be able to view SHR reports of your interest successfully, you must deploy all the prerequisite policies.

The following sections present lists of policies required by each report:

- ["Prerequisite Policies for OMi MP for Hadoop Reports" on the next page](#)
- ["Prerequisite Policies for OMi MP for Microsoft Active Directory Reports" on the next page](#)
- ["Prerequisite Policies for OMi MP for Microsoft SQL Server Reports" on page 62](#)
- ["Prerequisite Policies for OMi MP for Oracle Database Reports" on page 65](#)
- ["Prerequisite Policies for OMi MP for Oracle WebLogic Reports" on page 68](#)
- ["Prerequisite Policies for OMi MP for SAP Reports" on page 69](#)
- ["Prerequisite Policies for OMi MP for SAP HANA Reports" on page 76](#)
- ["Prerequisite Policies for OMi MP for Vertica Reports" on page 77](#)

Prerequisite Policies for OMi MP for Hadoop Reports

The following table lists the OMi MP for Hadoop policies and aspects required for each Hadoop report.

Report Name	Aspect Name	Policy Templates in Aspect	HP Performance Agent	
			Data Source Name	Data Class Name
Hadoop Job Running Status	Job Tracker Jobs Status	Hadoop_JobTracker_JobsCompleted Hadoop_JobTracker_JobsFailed Hadoop_JobTracker_JobsSubmitted Hadoop_ThroughputRunningJobs	HADOOP_DATA	HADOOP_JOBTRACKER
Hadoop NameNode Files	NameNode Blocks Statistics NameNode File Operations	Hadoop_NameNode_FilesTotal Hadoop_NameNode_BlocksTotal	HADOOP_DATA	HADOOP_NAMENODE
Hadoop NameNode Statistics	Weblogic JVM Heap Memory	Hadoop_NameNode_FilesCreated Hadoop_NameNode_FilesDeleted Hadoop_NameNode_FilesRenamed	HADOOP_DATA	HADOOP_NAMENODE
Hadoop Top 5 Nodes	<p>Note: To generate this report, System Management SHR Content Pack with data is required. For more details, see <i>Hadoop User Guide</i>.</p>			

Prerequisite Policies for OMi MP for Microsoft Active Directory Reports

The following table lists the OMi MP for Microsoft Active Directory policies and aspects required for each Microsoft Active Directory report.

Note: Not every policy should be deployed to every Microsoft Active Directory node. See HP *OMi MP for Microsoft Active Directory Online Help* to understand what each policy does and determine which policies are appropriate for the role played by each server. Deploying the policies indiscriminately will result in incorrect messages originating from the node.

In addition, see the *OMi MP documentation* for information on how the policies should be deployed and what additional configuration steps may be required.

Report Name	Aspect Name	Policy Templates in Aspect	HP Performance Agent	
			Data Source Name	Data Class Name
AD Adhoc Comparison	MicrosoftAD DIT	MSAD_TotalDitSize	ADSPI	ADSPI_DITDBSIZE
	MicrosoftAD DIT	MSAD_DITQueueLength		ADSPI_DITQUEUELENGTH
	MicrosoftAD DIT	MSAD_LogFilesPercentFull		ADSPI_LOGDISKSIZE
	MicrosoftAD Replication Auto Baseline	MSAD_Rep_GC_Check_and_Threshold_Monitor_AT		ADSPI_GCREP
AD Availability	MicrosoftAD	MSAD_SCH_ResponseLogging	ADSPI	ADSPI_RESPONSE
DC-GC Replication Delay	MicrosoftAD Replication	MSAD_Rep_MonitorIntraSiteReplication	ADSPI	ADSPI_REPLATENCY
		MSAD_Rep_MonitorInterSiteReplication		
DC Capacity	MicrosoftAD DIT	MSAD_LogFilesPercentFull	ADSPI	ADSPI_LOGPERCENTFULL
	MicrosoftAD DIT	MSAD_DITPercentFull		ADSPI_DITPERCENTFULL
	MicrosoftAD Services	MSAD_NTDSPROCDETAILS		ADSPI_NTDSPP

Report Name	Aspect Name	Policy Templates in Aspect	HP Performance Agent	
			Data Source Name	Data Class Name
DC Health	MicrosoftAD Replication	MSAD_Rep_MonitorIntraSiteReplication MSAD_Rep_MonitorInterSiteReplication	ADSPI	ADSPI_REPLATENCY
	MicrosoftAD Services	MSAD_NTDSPROCDETAILS		ADSPI_NTDSP
	MicrosoftAD DIT	MSAD_TotalDitSize		ADSPI_DITDBSIZE
	MicrosoftAD DIT	MSAD_DITPercentFull		ADSPI_DITPERCENTFULL
	MicrosoftAD DIT	MSAD_DITQueueLength		ADSPI_DITQUEUELENGTH

Prerequisite Policies for OMi MP for Microsoft SQL Server Reports

The following table lists the OMi MP for Microsoft SQL Server policies and aspects required for each Microsoft SQL Server report.

Note: See the *OMi MP documentation* for information on how the policies should be deployed and what additional configuration steps may be required.

Report Name	Aspect Name	Policy Templates in Aspect	HP Performance Agent	
			Data Source Name	Data Class Name
MSSQL Database and Virtual Device Space Usage Top N	Microsoft SQL Server Space	MSSQLServer_3242 MSSQLServer_3240	DBSPI_MSS_REPORT	DBSPI_MSS_REPORT

Report Name	Aspect Name	Policy Templates in Aspect	HP Performance Agent	
			Data Source Name	Data Class Name
MSSQL Performance Summary	Microsoft SQL Server Processes and Statistics	MSSQLServer_3001	DBSPI_MSS_GRAPH	DBSPI_MSS_GRAPH
		MSSQLServer_3025		
	Microsoft SQL Server Locks	MSSQLServer_3013	DBSPI_MSS_GRAPH	DBSPI_MSS_GRAPH
	Microsoft SQL Server Transactions	MSSQLServer_3009	DBSPI_MSS_GRAPH	DBSPI_MSS_GRAPH
	Microsoft SQL Server Input and Output Utilization	MSSQLServer_3008	DBSPI_MSS_GRAPH	DBSPI_MSS_GRAPH
MSSQL Table Space Usage Top N	Microsoft SQL Server Space	MSSQLServer_3241	DBSPI_MSS_REPORT	DBSPI_MSS_REPORT
MSSQL Database Input and Output Statistics	Microsoft SQL Server Input and Output Utilization	MSSQLServer_3007	DBSPI_MSS_GRAPH	DBSPI_MSS_GRAPH
		MSSQLServer_3008		
MSSQL Database Locks Summary	Microsoft SQL Server Locks	MSSQLServer_3071	DBSPI_MSS_GRAPH	DBSPI_MSS_GRAPH
		MSSQLServer_3013		
		MSSQLServer_3070		
		MSSQLServer_3072		
		MSSQLServer_3075		

Report Name	Aspect Name	Policy Templates in Aspect	HP Performance Agent	
			Data Source Name	Data Class Name
MSSQL Database Performance Summary	Microsoft SQL Server Error	MSSQLServer_3023 MSSQLServer_3024	DBSPI_MSS_GRAPH	DBSPI_MSS_GRAPH
	Microsoft SQL Server Data Access Methods	MSSQLServer_3053 MSSQLServer_3054 MSSQLServer_3051 MSSQLServer_3052	DBSPI_MSS_GRAPH	DBSPI_MSS_GRAPH
MSSQL Database Space Usage Details	Microsoft SQL Server Space	MSSQLServer_3240	DBSPI_MSS_REPORT	DBSPI_MSS_REPORT
MSSQL Database Table Space Usage Details	Microsoft SQL Server Space	MSSQLServer_3241	DBSPI_MSS_REPORT	DBSPI_MSS_REPORT
MSSQL Instance Availability Details	Microsoft SQL Server Availability	MSSQLServer_3243	DBSPI_MSS_REPORT	DBSPI_MSS_REPORT
MSSQL Server Transaction Summary	Microsoft SQL Server Transactions	MSSQLServer_3064	DBSPI_MSS_GRAPH	DBSPI_MSS_GRAPH
		MSSQLServer_3066		
		MSSQLServer_3067		
MSSQL Users Connection Summary	Microsoft SQL Server Processes and Statistics	MSSQLServer_3032 MSSQLServer_3026	DBSPI_MSS_GRAPH	DBSPI_MSS_GRAPH
MSSQL Virtual Device Space Usage Details	Microsoft SQL Server Space	MSSQLServer_3242	DBSPI_MSS_REPORT	DBSPI_MSS_REPORT

Note: M031_NumUsersCnt is not available in the SQL list.

Prerequisite Policies for OMi MP for Oracle Database Reports

The following table lists the OMi MP for Oracle Database policies and aspects required for each Oracle database report.

Report Name	Aspect Name	Policy Templates in Aspect	HP Performance Agent	
			Data Source Name	Data Class Name
Database Oracle Executive Summary	Oracle Database Availability	OracleDB_0201	DBSPI_ORA_REPORT	DBSPI_ORA_REPORT
Database Oracle Top 10 Instances and Tablespaces	Oracle Database Space Utilization Oracle Tablespace Health	OracleDB_0210 OracleDB_0212	DBSPI_ORA_REPORT	DBSPI_ORA_REPORT
Database Oracle Top 5 Instances Load and Efficiency	Oracle Memory Performance	OracleDB_0021 OracleDB_0022 OracleDB_0039 OracleDB_0019 OracleDB_0020	DBSPI_ORA_GRAPH	DBSPI_ORA_GRAPH
	Basic Oracle Memory Performance	OracleDB_0032	DBSPI_ORA_GRAPH	DBSPI_ORA_GRAPH
	Oracle Database Availability	OracleDB_0037	DBSPI_ORA_GRAPH	DBSPI_ORA_GRAPH
	Oracle Transactions	OracleDB_0049	DBSPI_ORA_GRAPH	DBSPI_ORA_GRAPH

Report Name	Aspect Name	Policy Templates in Aspect	HP Performance Agent	
			Data Source Name	Data Class Name
Database Oracle Archive Device Detail	Oracle Archive Health	OracleDB_0058 OracleDB_0060	DBSPI_ORA_GRAPH	DBSPI_ORA_GRAPH
	Oracle Database Space Utilization	OracleDB_0062 OracleDB_0064 OracleDB_0065	DBSPI_ORA_GRAPH	DBSPI_ORA_GRAPH
Database Oracle Disk And Memory Sort Detail	Oracle Memory Performance	OracleDB_0019 OracleDB_0020 OracleDB_0052	DBSPI_ORA_REPORT	DBSPI_ORA_REPORT
Database Oracle Instance Availability Detail	Oracle Database Availability	OracleDB_0201	DBSPI_ORA_REPORT	DBSPI_ORA_REPORT
Database Oracle Instance Space Utilization Detail	Oracle Database Space Utilization	OracleDB_0212	DBSPI_ORA_REPORT	DBSPI_ORA_REPORT
Database Oracle Segment Detail	Oracle Segment Space	OracleDB_0016 OracleDB_0017 OracleDB_0018	DBSPI_ORA_GRAPH	DBSPI_ORA_GRAPH
Database Oracle Shared Pool and Cache Performance Detail	Oracle Memory Performance	OracleDB_0021 OracleDB_0022 OracleDB_0039 OracleDB_0026 OracleDB_0040 OracleDB_0045	DBSPI_ORA_GRAPH	DBSPI_ORA_GRAPH

Report Name	Aspect Name	Policy Templates in Aspect	HP Performance Agent	
			Data Source Name	Data Class Name
Database Oracle SQL Performance Detail	Oracle Object Faults	OracleDB_0030 OracleDB_0046	DBSPI_ORA_GRAPH	DBSPI_ORA_GRAPH
	Oracle Parallel Query Performance	OracleDB_0070 OracleDB_0071 OracleDB_0074 OracleDB_0076	DBSPI_ORA_GRAPH	DBSPI_ORA_GRAPH
Database Oracle Tablespace Detail	Oracle Tablespace Health	OracleDB_0007 OracleDB_0006 OracleDB_0008 OracleDB_0011	DBSPI_ORA_GRAPH	DBSPI_ORA_GRAPH
	Oracle Object Faults	OracleDB_0004 OracleDB_0005	DBSPI_ORA_GRAPH	DBSPI_ORA_GRAPH
Database Oracle Tablespace Space Utilization Detail	Oracle Tablespace Health	OracleDB_0210	DBSPI_ORA_REPORT	DBSPI_ORA_REPORT

Note:

- E063_TraceFileAddCnt has been deprecated in the MP
- E067_RBSEgmtStatCnt metric has been Deprecated

Prerequisite Policies for OMi MP for Oracle WebLogic Reports

The following table lists the OMi MP for Oracle WebLogic policies and aspects required for each Oracle WebLogic report.

Report Name	Aspect Name	Policy Templates in Aspect	HP Performance Agent	
			Data Source Name	Data Class Name
WebLogic Servlet Performance Summary	Weblogic Servlet Performance	Weblogic_ServletAverageExecutionTime Weblogic_ServletRequestRate	WEBLOGIC_DATA	WEBLOGIC_SERVLETS
WebLogic JDBC Connection Pool Summary	Weblogic JDBC Connection Pool Status	Weblogic_ConnectionDelayTime Weblogic_JDBCConnectionLeakRate Weblogic_JDBCConnectionPoolThroughputRate Weblogic_JDBCConnectionPoolUtilization	WEBLOGIC_DATA	WEBLOGIC_JDBC
WebLogic Top N Summary	Weblogic JVM Heap Memory	Weblogic_JVMHeapUsage	WEBLOGIC_DATA	WEBLOGIC_JVM
	Weblogic JDBC Connection Pool Status	Weblogic_ConnectionDelayTime Weblogic_JDBCConnectionPoolThroughputRate	WEBLOGIC_DATA	WEBLOGIC_JDBC
	Weblogic EJB Performance	Weblogic_EJBCacheHitPercentage Weblogic_EJBPoolWaitCount	WEBLOGIC_DATA	WEBLOGIC_EJB_TRANS WEBLOGIC_EJB
WebLogic EJB Cache Hit	Weblogic EJB Performance	Weblogic_EJBCacheHitPercentage	WEBLOGIC_DATA	WEBLOGIC_EJB_TRANS

Report Name	Aspect Name	Policy Templates in Aspect	HP Performance Agent	
			Data Source Name	Data Class Name
WebLogic JMS Performance Details	Weblogic JMS Performance	Weblogic_JMSJMServerThruByteRate Weblogic_JMSJMServerThruMessageRate Weblogic_JMSUtilizationByBytesPercentage Weblogic_JMSUtilizationByMessagesPercentage	WEBLOGIC_DATA	WEBLOGIC_JMS
WebLogic JVM Utilization	Weblogic JVM Heap Memory	Weblogic_JVMHeapUsage Weblogic_JVMHeapFreeMemory	WEBLOGIC_DATA	WEBLOGIC_JVM
WebLogic Server Availability Details	Weblogic Server Status	Weblogic_ServerStatus	WEBLOGIC_DATA	WEBLOGIC_SERVER
WebLogic Transaction Performance Details	Weblogic Transactions	Weblogic_TransactionThroughputRate Weblogic_TransactionAverageTime	WEBLOGIC_DATA	WEBLOGIC_TRANSACTION
WebLogic Executive Summary	Weblogic Server Status	Weblogic_ServerStatus	WEBLOGIC_DATA	WEBLOGIC_SERVER

Note: All the other metrics that were part of this report are collected from the System Management and OM SHR Content Packs

Prerequisite Policies for OMi MP for SAP Reports

The following table lists the OMi MP for SAP policies and aspects required for each SAP report.

Report Name	Aspect Name	Policy Templates in Aspect	HP Performance Agent	
			Data Source Name	Data Class Name
SAP Appserver Memory Performance	SAP J2EE Memory Status	SAPJ2EE_2201 SAPJ2EE_2202 SAPJ2EE_2203 SAPJ2EE_2008 SAPJ2EE_2009 SAPJ2EE_2010	SAPSPINW_RPT_METRICS	SAPSPINW_RPT_METRICS

Report Name	Aspect Name	Policy Templates in Aspect	HP Performance Agent		
			Data Source Name	Data Class Name	
SAP Appserver Netweaver Details 7.0	SAP J2EE Ports Manager Performance	SAPJ2EE_0003	SAPSPINW_RPT_METRICS	SAPSPINW_RPT_METRICS	
		SAPJ2EE_0004			
		SAPJ2EE_0005			
		SAP J2EE Connections Manipulator Performance			SAPJ2EE_0006
		SAPJ2EE_0007			
		SAPJ2EE_0008			
		SAP J2EE Http Provider Performance			SAPJ2EE_0009
		SAPJ2EE_0010			
		SAP J2EE Sessions Manager Performance			SAPJ2EE_0011
		SAPJ2EE_0014			
		SAPJ2EE_0015			
		SAP J2EE P4 and IIO P Provider Performance			SAPJ2EE_0016
		SAPJ2EE_0017			
		SAPJ2EE_0018			
		SAP J2EE Web Container Performance			SAPJ2EE_0019
		SAPJ2EE_0020			
		SAPJ2EE_0021			
		SAPJ2EE_2017			
		SAPJ2EE_2180			
		SAPJ2EE_2181			
SAPJ2EE_2182					
SAPJ2EE_2183					
SAPJ2EE_2184					
SAPJ2EE_2185					
SAPJ2EE_2186					
SAPJ2EE_2191					

Report Name	Aspect Name	Policy Templates in Aspect	HP Performance Agent	
			Data Source Name	Data Class Name
SAP Appserver Netweaver Details 7.1	SAP J2EE Sessions Manager Performance	SAPJ2EE_0201	SAPSPINW_RPT_METRICS	SAPSPINW_RPT_METRICS
		SAPJ2EE_0202		
		SAPJ2EE_0203		
	SAP J2EE Log Configurator Performance	SAPJ2EE_2211		
		SAPJ2EE_2212		
		SAPJ2EE_2213		
		SAPJ2EE_2214		
	SAP J2EE Transaction Status	SAPJ2EE_2221		
		SAPJ2EE_2222		
		SAPJ2EE_2223		
SAPJ2EE_2224				
SAPJ2EE_2225				
SAP J2EE application Server - Requests Overview	SAP J2EE P4 and IIO P Provider Performance	SAPJ2EE_2185	SAPSPINW_RPT_METRICS	SAPSPINW_RPT_METRICS
		SAPJ2EE_2186		
		SAPJ2EE_2191		
	SAP J2EE Web Container Performance	SAPJ2EE_2206		
		SAPJ2EE_2215		
		SAPJ2EE_2220		
SAP J2EE Http Provider Performance				

Report Name	Aspect Name	Policy Templates in Aspect	HP Performance Agent	
			Data Source Name	Data Class Name
SAP J2EE application Server - System and Application thread pool Overview	SAP J2EE System Thread Pool Performance	SAPJ2EE_0209	SAPSPINW_RPT_METRICS	SAPSPINW_RPT_METRICS
		SAPJ2EE_0210		
	SAPJ2EE_0211			
	SAP J2EE Application Thread Pool Performance Aspect	SAPJ2EE_0212		
	SAPJ2EE_0213			
	SAPJ2EE_0214			
	SAPJ2EE_0216			
	SAPJ2EE_0217			
	SAPJ2EE_0221			
	SAPJ2EE_0222			
	SAPJ2EE_0223			
	SAPJ2EE_0224			
	SAPJ2EE_0225			
	SAPJ2EE_0226			
	SAPJ2EE_0227			
	SAPJ2EE_0228			
	SAPJ2EE_0229			
	SAPJ2EE_0022			
	SAPJ2EE_0023			
	SAPJ2EE_0024			
	SAPJ2EE_0025			
	SAPJ2EE_0026			
	SAPJ2EE_0027			
	SAPJ2EE_0028			
	SAPJ2EE_0029			
	SAPJ2EE_0030			
	SAPJ2EE_0031			
SAPJ2EE_0032				

Report Name	Aspect Name	Policy Templates in Aspect	HP Performance Agent	
			Data Source Name	Data Class Name
		SAPJ2EE_0033		
		SAPJ2EE_0034		
		SAPJ2EE_0035		
		SAPJ2EE_0036		
		SAPJ2EE_0037		

Report Name	Aspect Name	Policy Templates in Aspect	HP Performance Agent	
			Data Source Name	Data Class Name
SAP Buffer Performance	SAPABAP_PerfMon	SAPBUFFER_PERF	The Datasource name for the ABAP related metrics will be dependent on the HostName, SID, ABAP Instance Name in the following format: R3_<host>_<sid>_<instnum>_DATA	SAPBUFFER_PERF
SAP Database Performance Overview - Oracle	SAPABAP_PerfMon	DBINFO_PERF		DBINFO_PERF
SAP Document Volume Overview	SAPABAP_PerfMon	DOCSTAT_PERF		DOCSTAT_PERF
SAP Enterprise portal performance	SAPABAP_PerfMon	EP_PERF		EP_PERF
SAP ICM performance and availability	SAPABAP_PerfMon	ICMSTAT_PERF		ICMSTAT_PERF
SAP Application server availability	SAPABAP_PerfMon	SYSUP_PERF		SYSUP_PERF
SAP Memory Performance	SAPABAP_PerfMon	SAPMEMORY_PERF		SAPMEMORY_PERF
SAP Spool and Job performance	SAPABAP_PerfMon	SPOOL_PERF JOBREP_PERF		SPOOL_PERF JOBREP_PERF
SAP Transaction Statistics	SAPABAP_PerfMon SAPABAP_StatRecMon	STATRECS_PERF		STATRECS_PERF
SAP Update tasks performance	SAPABAP_PerfMon	UPDATE_PERF		UPDATE_PERF
SAP User performance	SAPABAP_PerfMon	USER_PERF		USER_PERF
SAP Workload Statistics overview	SAPABAP_PerfMon	WLSUM_PERF		WLSUM_PERF
SAP Workprocess performance	SAPABAP_PerfMon	WP_PERF		WP_PERF

Note: For all ABAP related Policies/Metrics ,we have to just enable/disable the metric logging in the for the particular Policy templates

Prerequisite Policies for OMi MP for SAP HANA Reports

The following table lists the OMi MP for SAP HANA policies and aspects required for each Hadoop report.

Report Name	Aspect Name	Policy Templates in Aspect	HP Performance Agent	
			Data Source Name	Data Class Name
SAPHana BackUp Status	HANA Backup Status	HANA_CompleteDataBackupStatus	HANA_DATA	HANA_LOG_BKSTATUS
		HANA_LogBackupStatus	HANA_DATA	HANA_LOG_BKSTATUS
SAPHana Connection Details	HANA Work Load	HANA_ConnectionCountUsage	HANA_DATA	HANA_CNNCTUSAGE
SAPHana CPU Usage	HANA Database Space Usage	HANA_Collect_SysHealth	HANA_DATA	HANA_DB_RESUSAGE
	HANA System Infrastructure Health			
SAPHana License Usage	HANA License Status	HANA_LicenseExpiration HANA_LicensedMemoryUsage	HANA_DATA	HANA_LIC_USAGE
SAPHana Memory Performance	HANA Database Space Usage	HANA_Collect_SysHealth	HANA_DATA	HANA_DB_RESUSAGE
	HANA System Infrastructure Health			
SAPHana Space Usage	HANA Database Space Usage	HANA_DiskUsage	HANA_DATA	HANA_SPACE_USAGE
SAPHana Tenant Status	HANA Work Load	HANA_Collect_TenantsSummary	HANA_DATA	HANA_TENNT_STTS

Report Name	Aspect Name	Policy Templates in Aspect	HP Performance Agent	
			Data Source Name	Data Class Name
SAPHana WorkLoad	HANA Work Load	HANA_ConnectionCountUsage	HANA_DATA	HANA_CNNCTUSAGE
		HANA_LongRunninStmnt	HANA_DATA	HANA_LNGRNGSTMT
		HANA_LongIdleCursor	HANA_DATA	HANA_LNGIDLECURS

Prerequisite Policies for OMi MP for Vertica Reports

The following table lists the OMi MP for Vertica policies and aspects required for each Vertica report.

Report Name	Aspect Name	Policy Templates in Aspect	HP Performance Agent	
			Data Source Name	Data Class Name
Vertica Storage Usage	Vertica System Infrastructure	Vertica_FreeDskSpcPct	VERTICA_DATA	VERTICA_STRG_METRICS
Vertica Top 5 Resource Usage	Vertica Database Resource Availability	Vertica_RsrcCntInQueue Vertica_RsrcRejectionCnt	VERTICA_DATA	VERTICA_DB_METRICS
Vertica Top 5 Session Usage	Vertica Session Usage	Vertica_SessionCntPct	VERTICA_DATA	VERTICA_DB_METRICS
Vertica Top and Bottom 5 Instances	Vertica System Infrastructure	Vertica_AvgCpuUsagePct Vertica_AvgMmryUsagePct	VERTICA_DATA	VERTICA_DB_METRICS
Vertica WorkLoad	Vertica Query Performance	Vertica_ParallelQueryCnt	VERTICA_DATA	VERTICA_METRICS

Report Name	Aspect Name	Policy Templates in Aspect	HP Performance Agent	
			Data Source Name	Data Class Name
Vertica Top 5 Long Running Query	Vertica Query Performance	Vertica_LngRuninQuryMon	VERTICA_DATA	VERTICA_LONG_TRANS

Part II: Integrating with Other Monitoring Solutions

This section provides information about integrating SHR with other monitoring solutions of HP Software to simplify and enhance the experience of launching and viewing SHR reports.

Chapter 3: Integrating SHR with MyBSM

This chapter provides the steps to view HP Service Health Reporter (SHR) reports on the HP Business Service Management MyBSM user interface. You can launch SHR reports in the context of a Configuration Item (CI) or Business View from the MyBSM user interface.

Integrating SHR with MyBSM enriches the component gallery and provides a convenient way to view all the BSM and SHR reports in one place, without launching SHR.

Steps for Integrating SHR with MyBSM

Step 1: Creating a User in SHR and Configuring Preferences

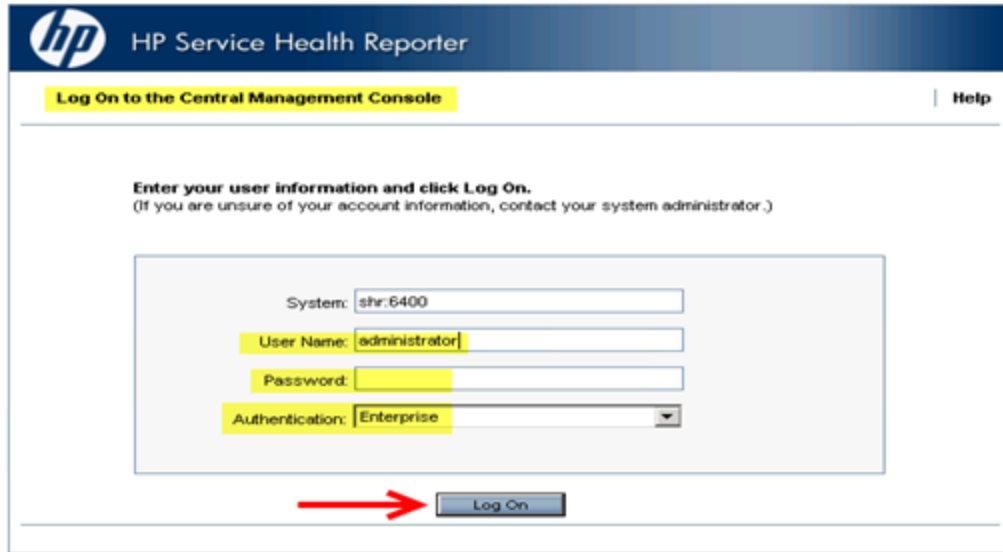
As a prerequisite, you should have already created a user account in BSM with permissions to create and view pages in MyBSM. This BSM user should also be a user in SHR with authorization to view SHR reports.

SHR uses SAP BusinessObjects for user management. To create a user in SHR, perform the following steps:

1. Log on to **SAP BusinessObjects Central Management Console (CMC)** by typing the address **http://<hostname>:8080/CmcApp** into the browser window.

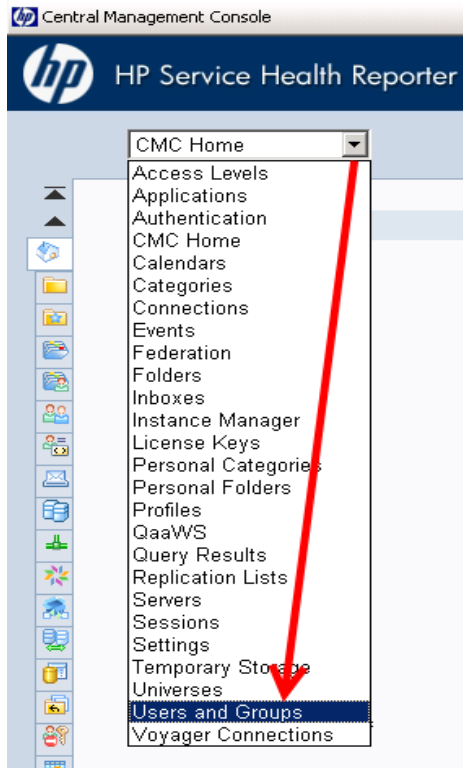
Note: The hostname must be the name of the server on which SAP BusinessObjects is installed.

Figure 1.1 Log on screen of SAP BusinessObjects Central Management Console



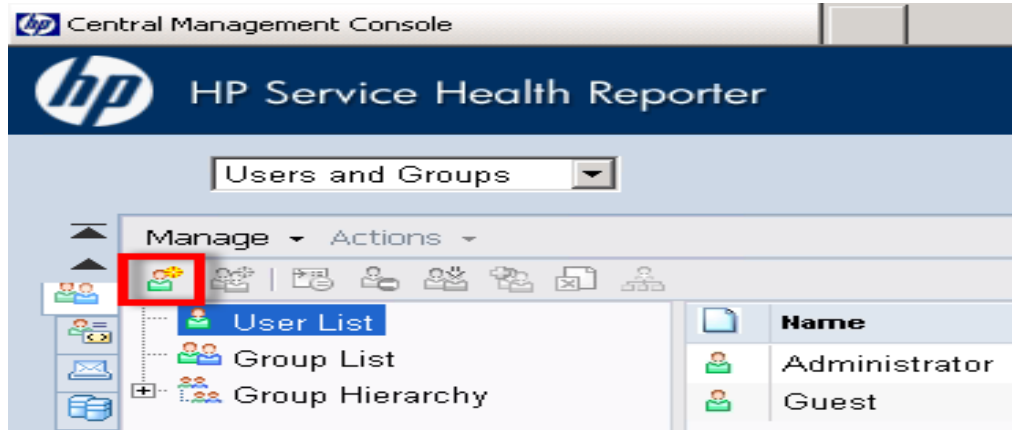
2. Select **Users and Groups** from the drop-down box.

Figure 1.2 CMC Users and Groups screen



3. Select **User List** and click **Create New User** icon as shown in figure 1.3.

Figure 1.3 Creating a new user



4. Enter the user details in the **New User** window as shown in figure 1.4 (a), then click **Create & Close**.

Note:

- a. Account Name must be the same as the existing user name configured in HP Business Service Management.
- b. Check **Password never expires** under Enterprise Password Settings.

Figure 1.4 (a) Create New User Screen

New User

Authentication Type: Enterprise

Account Name: admin

Full Name: BSM Admin

Email:

Description: BSM default admin

Enterprise Password Settings:

Password: [masked] Password never expires

Confirm: [masked] User must change password at next logon

User cannot change password

Connection Type:

Concurrent User

Named User

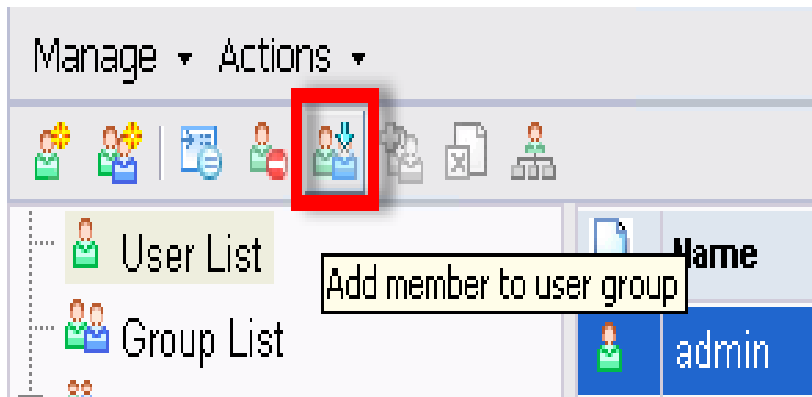
The newly created user appears in the **User List** as shown in the following figure.

Figure 1.4 (b) Admin

Name	Full Name	Type	Description	Date Modified
admin	BSM Admin	User	BSM default admin	Aug 13, 2013 7:12 PM
Administrator		User	Administrator account	Aug 13, 2013 4:44 PM
Guest		User	Guest account	May 28, 2013 7:23 AM

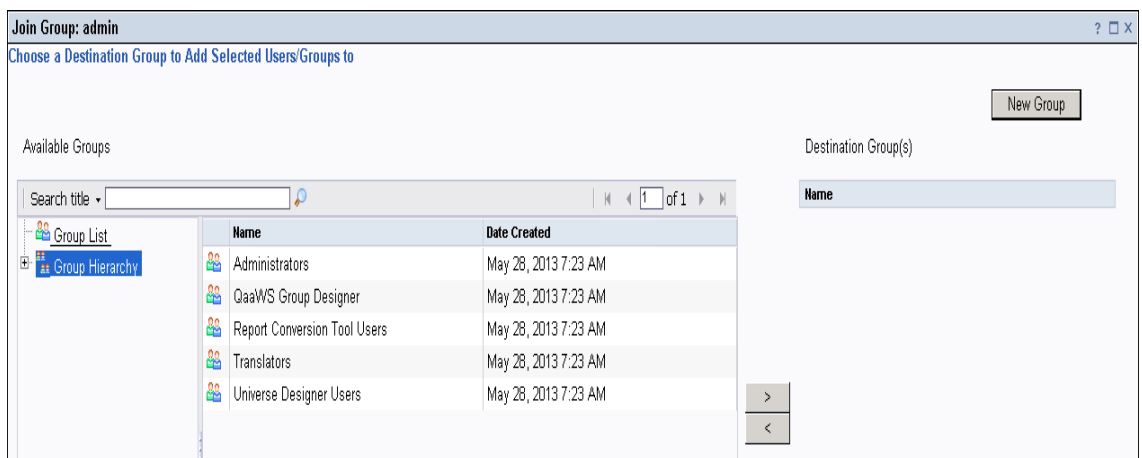
5. To add the SHR user to Administrator group, perform the following steps:
 - a. Select the user you created and click the **Add member to user group** icon as shown below.

Figure 1.5(a).



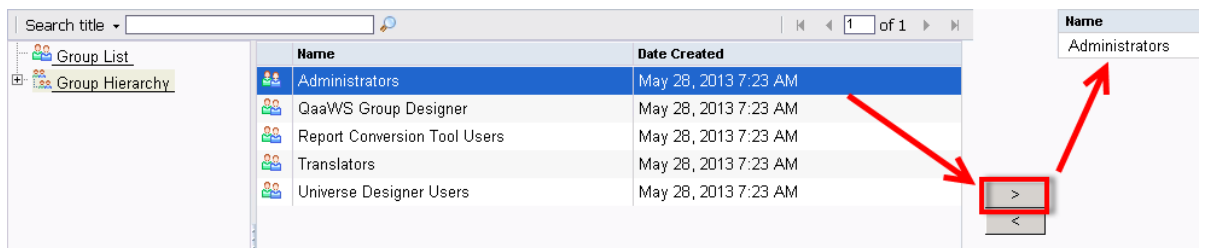
- b. A pop-up window Join Group: <<username>> appears as shown in figure 1.5 (b).

Figure 1.5 (b)



- c. To move Administrators from **Available Groups** to **Destination Group(s)**, select **Administrators**, click > button, then click **OK** as shown in figure 1.5 (c).

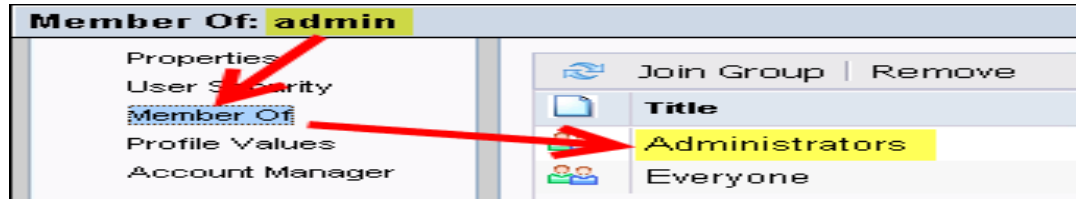
Figure 1.5 (c)



- 6. To verify User and Group configuration, perform the following steps:

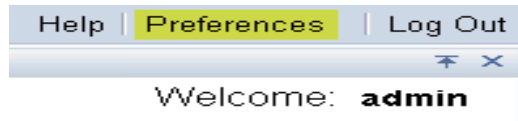
- a. Double-click **Admin**, the user you created from the list of users.
- b. Select **Member Of** and check if Administrators is listed on the right side as shown in figure 1.6.

Figure 1.6



7. To ensure proper functioning of the Drill Up/Drill Down functionality in reports while accessing them from the MyBSM console, you must set the user preferences as follows:
 - a. Connect to **http://<hostname>:<port>/InfoViewApp** where hostname is the name of the server on which SAP BusinessObjects is installed.
 - b. Log on as SHR user.
 - c. Click **Preferences** in the upper right corner as shown in figure 1.7 (a).

Figure 1.7 (a)



- d. Under **General**, enable the options as shown in the following figures:

Figure 1.7 (b) Set User Preference-1

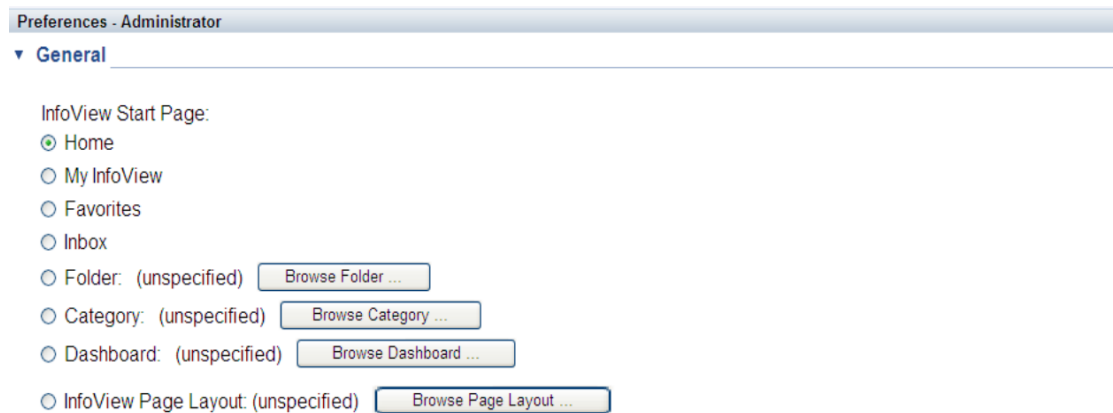


Figure 1.7 (c) Set User Preference-2

- Document Viewing:
- In the InfoView portal
 - In a single fullscreen browser window, one document at a time
 - In multiple fullscreen browser windows, one window for each document

- e. Click **Web Intelligence** and select the option **Synchronize drill on report blocks**. This is the only change necessary to make Preferences accept all other defaults and click **OK**.

Figure 1.7 (d) Set User Preference-3

Drill options:

- Prompt when drill requires additional data
- Synchronize drill on report blocks
- Hide Drill toolbar on startup

Start drill session:

- On duplicate report
- On existing report

Figure 1.7 (e) Set User Preference-4

Preferences - Administrator

▼ **Web Intelligence**

Select a default view format:

- Web (no downloading required)
- Interactive (no downloading required)
- PDF (Adobe AcrobatReader required)

When viewing a document:

- Use the document locale to format the data
- Use my preferred viewing locale to format the data

Step 2: Configuring BSM/SHR LW-SSO Authentication

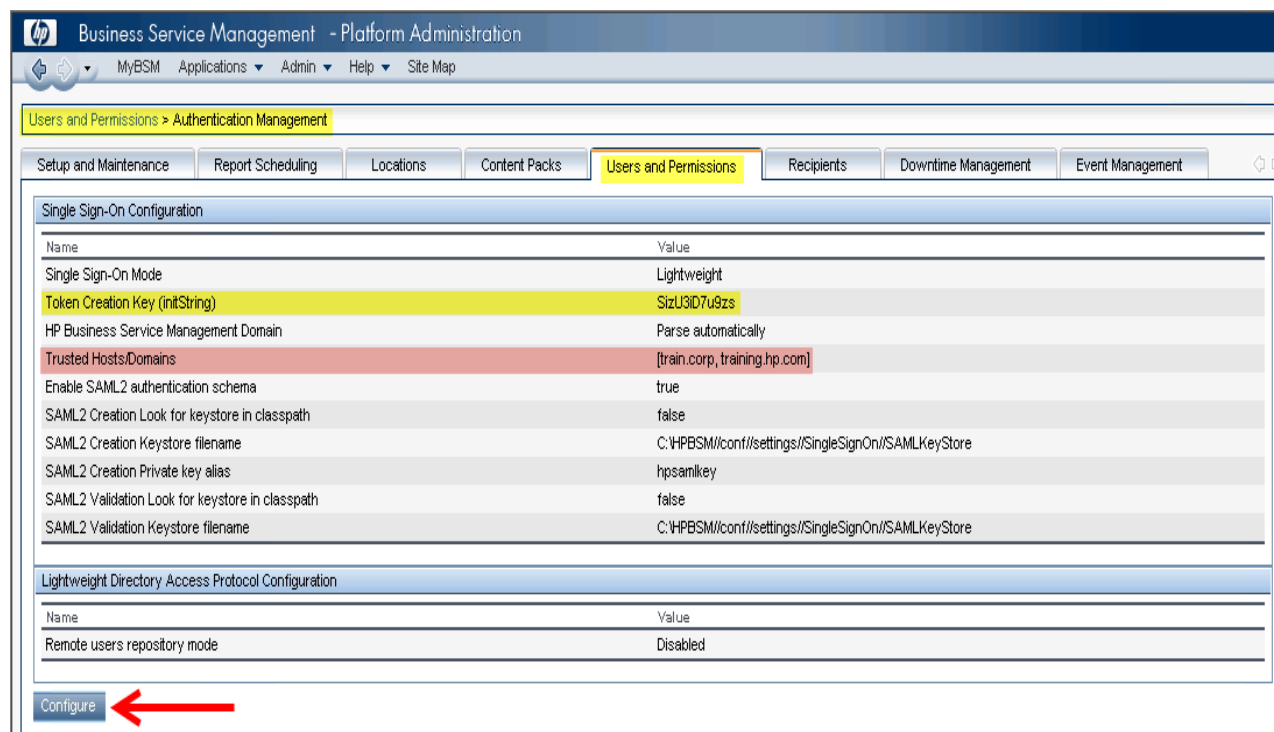
Using Lightweight Single Sign-on (LW-SSO), you can enable a MyBSM user to access SHR reports with the same user credentials.

Note: As SAP BusinessObjects is a third-party application, Single Sign-on (SSO) cannot be directly achieved with BSM using LW-SSO. For MyBSM, SSO is first setup between the SHR Admin Web App and BSM using LW-SSO as explained in [Step 2](#). Then, SSO is setup between the SHR Admin Web App and SAP BusinessObjects using SAP BusinessObjects Trusted Authentication as explained in [Step 3](#).

To configure LW-SSO, perform the following steps:

1. Copy the LW-SSO token from BSM:
 - a. Log on to the BSM system as Administrator.
 - b. Navigate to **Admin > Platform > Users and Permissions** tab.
 - c. Click **Authentication Management** and copy the value in the Token Creation Key (initString) field.

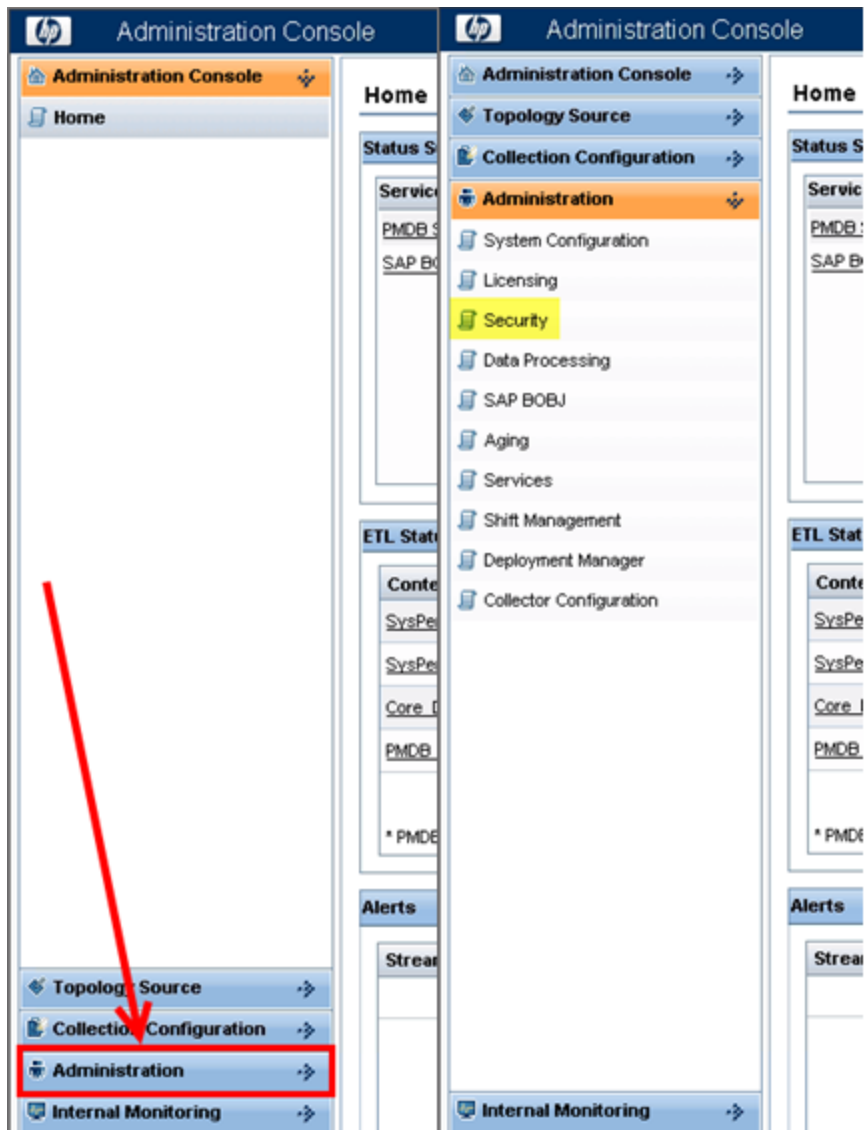
Figure 2.1



Note: If SHR and BSM are in different domains, click **Configure** and add the SHR Domain to the Trusted Hosts/Domains list.

2. To configure LW-SSO in SHR, perform the following steps:
 - a. Log on to SHR Administration Console by typing the address **http://<hostname>:21411/BSMRAppApp** in the browser window, where hostname is the name of the server on which SHR is installed.
 - b. Go to **Administration > Security** in the left pane.

Figure 2.2



c. Click **Security** and the **LW-SSO** tab opens as shown in figure below.

Figure 2.3

The screenshot shows a 'Security' window with two tabs: 'LW-SSO' and 'BO Trusted Authentication'. The 'LW-SSO Configuration' section is active and contains the following fields:

- Enabled:** A checked checkbox.
- Domain:** A text box containing 'training.hp.com'.
- Expiration Period (mins):** A text box containing '60'.
- Init String:** A text box containing 'SizU3ID7u9zs'.
- Protected Domains:** A list box containing 'ind.hp.com'.

A red arrow points from the bottom of the 'Protected Domains' list box to a 'Save' button.

- d. Copy the values from the Token Creation Key (InitString) field in BSM and paste them into the Init String field.
- e. Check the **Enabled** option.
- f. In the **Domain** field, enter the SHR domain.
- g. In the **Expiration Period** field, enter the recommended value of **60** minutes for LW-SSO configuration.
- h. If SHR and BSM are hosted in the same domain, no change is required in the **Protected Domain** field.

Note:

- i. If BSM is hosted in a different domain, add it to the **Protected Domain** field.
- ii. Ensure `<INSTALL_DIR>\PMDB\data\config.prp, bo.cms` is set to fully qualified name of the SHR system.

- i. Click **Save** to save the configuration as shown in [figure 2.3](#).

A confirmation message stating LW-SSO Configuration saved successfully. Please restart the HP_PMDB_Platform_Administrator' service for these changes to take effect appears. Restart this service as explained in [Step 3](#).

Step 3: Configuring SAP BusinessObjects Trusted Authentication

To setup SSO between the SHR Admin Web App and SAP BusinessObjects, perform the following steps:

1. On the SHR system, go to **Administration > Security > BO Trusted Authentication**.
2. Check the **Enabled** option.
3. Enter a string of your choice in the **Shared Secret** field.

Figure 3.1

The screenshot shows a web interface titled "Security" with a sub-tab "BO Trusted Authentication". Below this is a section titled "BO Trusted Authentication Configuration". It contains a checkbox for "Enabled" which is checked. Below that is a text input field for "Shared Secret" which is empty. To the right of the input field is a red error message: "Value is required." with a red 'x' icon. At the bottom of the configuration area is a "Save" button.

Note: SAP BusinessObjects Trusted Authentication works based on a shared secret mechanism between the SHR Admin Web App and SAP BusinessObjects. The string you enter in figure 3.1 is the shared secret. This string is the same shared secret across SHR Admin Web App and SAP BusinessObjects.

To verify if the same shared secret is also configured in SAP BusinessObjects, log on to SAP BusinessObjects CMC.

4. Click **Save** to save the configuration.
5. Restart the **HP_PMDB_Platform_Administrator** service from the Windows services list, to apply the changes made in "[Step 2: Configuring BSM/SHR LW-SSO Authentication](#)" on page 87 and "[Step 3: Configuring SAP BusinessObjects Trusted Authentication](#)" above.

Note: On a Linux host, log on as a root user and run the following command:

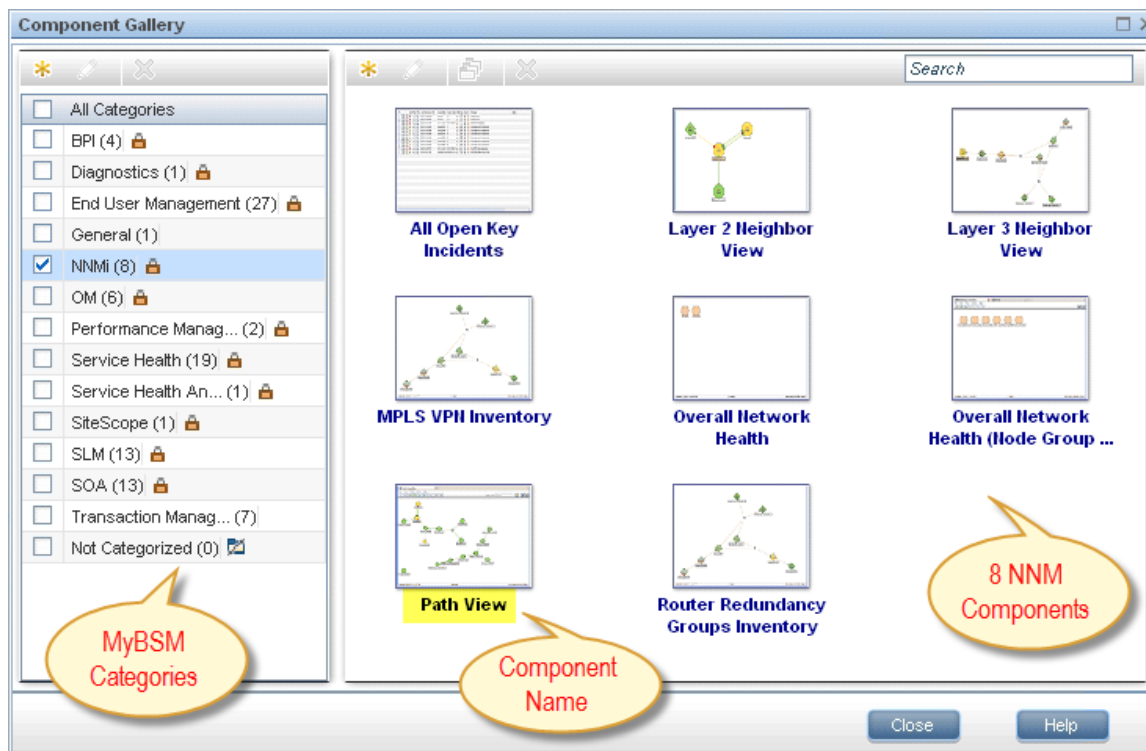
```
Service HP_PMDB_Platform_Administrator stop/start
```

Step 4: Generating the Report Component XML and Loading it to MyBSM

Every MyBSM component, such as any of the eight NNM components shown in Figure 4.1, is represented in XML files located on the BSM host. To make an SHR report appear in the Component Gallery of MyBSM, create an XML and deploy it in the BSM host.

Generate the component XML file using the ComponentGenerator command on the SHR host and load it to the BSM host through a combination of manual copying and using the JMX Console.

Figure 4.1



To generate the report component XML file, perform the following steps:

1. Log on to the SHR system.
2. Open a command line window (for Windows) or a shell prompt (for Linux).
3. Run the following commands to see the ComponentGenerator syntax:

For Windows: %PMDB_HOME%\bin\ComponentGenerator

For Linux: \$PMDB_HOME/bin/ComponentGenerator

Figure 4.2 (Windows)

```

Administrator: Command Prompt
Microsoft Windows [Version 6.1.7601]
Copyright (c) 2009 Microsoft Corporation. All rights reserved.

C:\Users\Administrator>C:\HP-SHR\PMDB\bin\ComponentGenerator
usage: Component Generator XML
  -c <Category Name>      Category Name
  -d <Document Id>       Document Id
  -f <Number>            Optional Parameter: Use non zero value if your
                        report does not accept any parameter
  -h                     Help
  -l <File Location>     File Location
  -n <Component Name>   Component Name
C:\Users\Administrator>_

```

4. Run the following command to generate the XML file:

For Windows: %PMDB_HOME%\bin\ ComponentGenerator -c <categoryName> -d <documentId > -n <componentName> -l <outputDir> -f <optional Parameter>

For Linux: \$PMDB_HOME/bin/ ComponentGenerator -c <categoryName> -d <documentId > -n <componentName> -l <outputDir> -f <optional Parameter>

- Category Name = This is the Category to be created in Component Gallery in MyBSM
- Document Id = This is the report's unique document ID – see the "[Finding the Document ID of a Report](#) " on page 99 section for more information.
- File Location = This is the directory where the component XML file will be created
- Component Name = The Component name to be created for the report in MyBSM (note the use of quotes here)
- Optional Parameter = Use non zero value if the report does not accept view or CIID as parameter.

Note: The above command generates <Component Category><componentName>.uim.xml file in outputDir.

Figure 4.3 (Linux)

```

C:\Users\Administrator>C:\HP-SHR\PMDB\bin\ComponentGenerator -c SHR -d Adx_pEFdD99Lt3cMC59KL6s -l C:\Users\Administrator\Desktop -n "SM Heat Chart"

Category Name      := SHR
Document Id       := Adx_pEFdD99Lt3cMC59KL6s
Component Name    := SM Heat Chart
File Location     := C:\Users\Administrator\Desktop

Component xml generated successfully. XML file location [C:\Users\Administrator\Desktop]

```

To load the component to MyBSM, perform the following steps:

1. On the BSM system, copy the component XML file to %TOPAZ_HOME%\conf\uimashup\import\toLoad\Components.

Note: If BSM is deployed in a distributed environment, the XML file resides in the Gateway Server.

2. Load the XML (*.uim.xml) file using the JMX Console.
 - a. Log on to the BSM JMX Console by entering the address **http://<bsm hostname>:8080/jmx-console/** into the browser window.
 - b. Enter BSM credentials if prompted for a username and password.
 - c. Click **service=UIMDataLoader** link as shown in figure 4.4 (a) and navigate to **JMX MBean View** screen as per figure 4.4 (b)

Figure 4.4 (a)

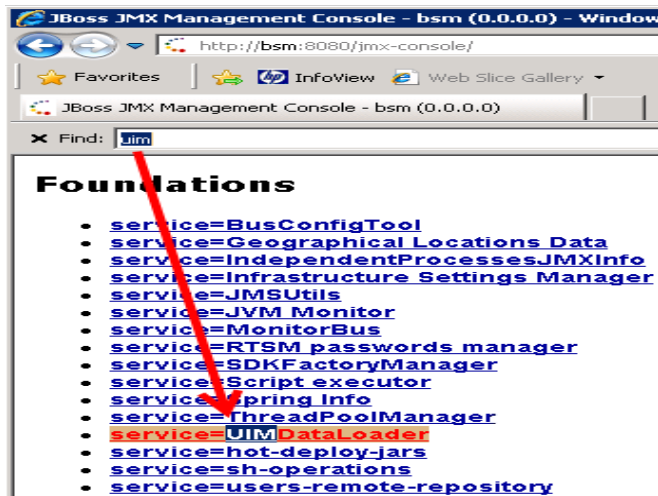
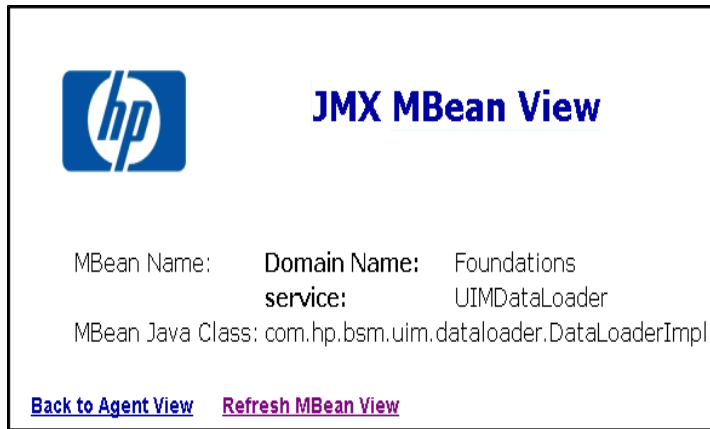


Figure 4.4 (b)



- d. Go to the method named **boolean loadComponentsGallery ()**

Figure 4.5

boolean loadComponentsGallery()

Load Components galleries from XML files. Optionally skip those that already exist on this server.

Param	ParamType	ParamValue	ParamDescription
customerId	int	<input type="text" value="0"/>	Customer ID, '0' means that this operation will be executed for all customers
override	boolean	<input checked="" type="radio"/> True <input type="radio"/> False	If true: import ALL components from the file (overriding existing ones), if false: skip existing components

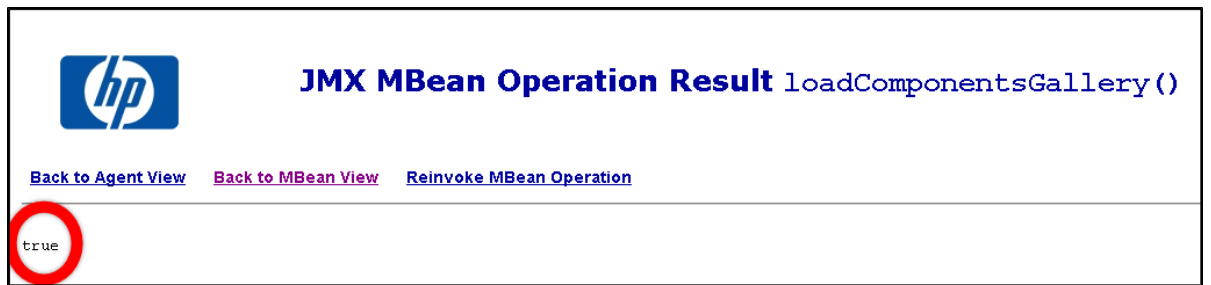
←

- e. Enter **0** as input value in the text field.
- f. Click **Invoke** to load the *.uim.xml file.

If the load process is successful, the component XML is moved to the %TOPAZ_HOME%\conf\uimashup\import\loaded\Components folder.

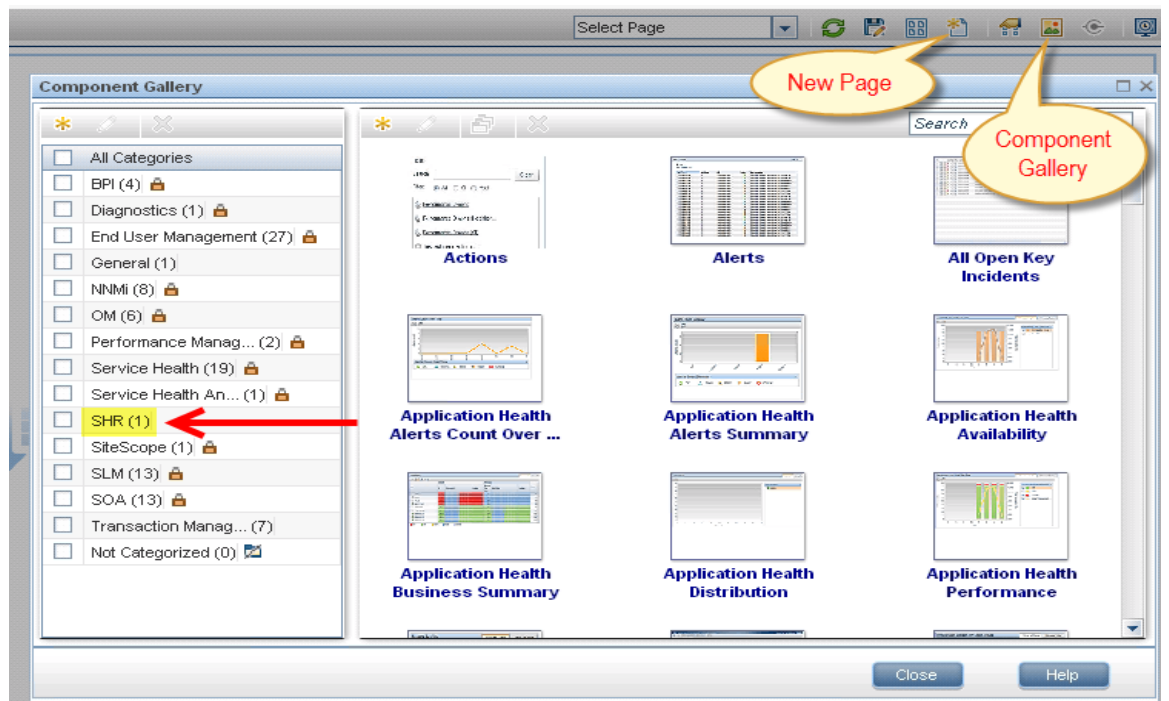
If the load process fails, the component XML is moved to the %TOPAZ_HOME%\conf\uimashup\import\errors folder.

Figure 4.6



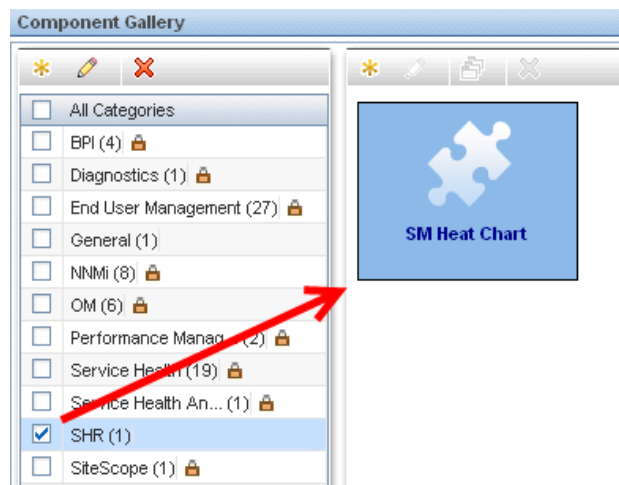
3. To verify the availability of the component in MyBSM console:
 - a. Log on to the BSM user interface.
 - b. Click **MyBSM**
 - c. Click **New Page > Component Gallery**.

Figure 4.7



- d. The component must be available within the category.

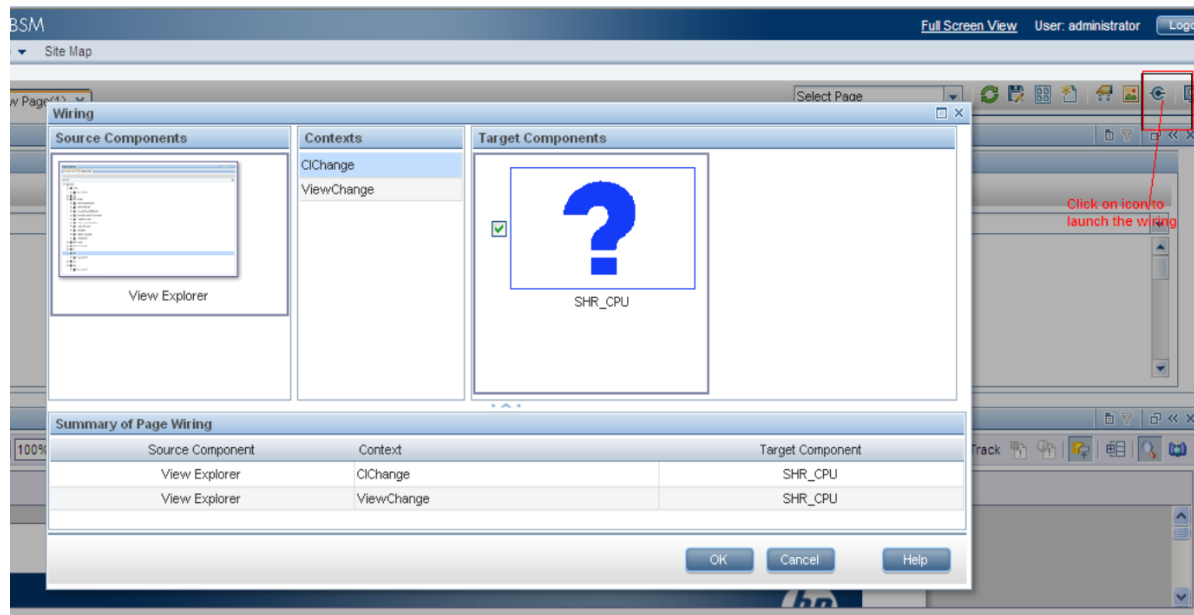
Figure 4.8



4. To verify the wiring, Click **Wiring** as shown in Figure 4.9.

Note: By default, all reports are wired on CIChange and ViewChange event. If the report does not support any events, clear the check-box to disable the wiring.

Figure 4.9



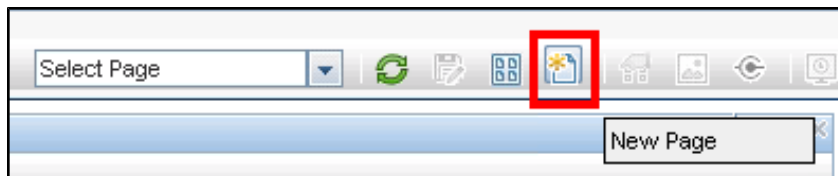
Step 5: Creating MyBSM Page and Adding the Report Component

You must create a MyBSM page and add the SHR report to it as a component.

To create a MyBSM page, perform the following steps:

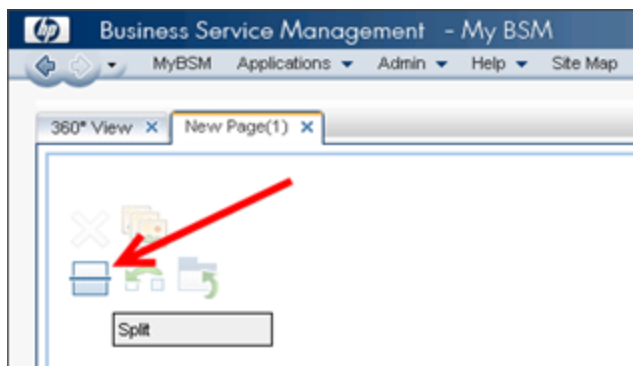
1. On the BSM user interface click **Create New**.

Figure 5.1



2. Split the page as per the requirement.

Figure 5.2



3. Click **Components** and drag-drop the components, such as View Explorer, to trigger the events.
4. Drag and drop the required SHR components. The SHR report can be viewed in the MyBSM page.
5. Save the page to view it from the MyBSM user interface.

Best Practices

- Use existing SHR Report template for creating new reports and integrate it with MyBSM to utilize the formatting features and structure aligned with out-of-the-box (OOTB) reports.
- Use the existing user name that is configured in HP Business Service Management BSM user credentials for creating new Mashup reports in SAP BusinessObjects. If the user does not exist, create a new user with the same name.
- All SHR OOTB reports might not be qualified for integrating with MyBSM. For such reports, a prompt parameter is mandatory and BSM cannot generate that parameter.

- To integrate an OOTB SHR report with MyBSM, copy the report under Mashup Reports folder in SAP BusinessObjects InfoView, rename it (to differ with OOTB Report CUID), and perform any customizations.
- On CI change event for a Business service CI type, the Business Service CI(s) are passed as parameters to the SM CPU Heat Chart and SM Memory Heat Chart reports. This is only supported for Business Service CIs in this report.

If non-Biz Svc CIs need to be handled in custom mashup reports, a prompt named ciID should be created using the CIID attribute from the corresponding dimension (for example, ciID of Systems, Applications, and so on)

- Create Summary reports at daily/hourly level, which can be easily integrated with My BSM, because report refresh time is considerably reduced.
- Make sure the reports have **Date Range** prompt with default values to improve performance. For Inventory reports, add a Business Service/View prompt to experience better report performance.
- Add Prompts as required, but provide default values, except when the report parameters are provided by BSM, such as Business Service/Node CIID.
- To create new Objects/Filters in Universe, add them in Supplemental section of the respective Universe.
- When creating new reports, create a new data provider for each set of measures/class to avoid context related issues.
- Aim to minimize the report variables in Mashup reports.
- See the *SAP BusinessObjects Web Intelligence Guide* for new features and formatting related concerns in Mashup reports.

Finding the Document ID of a Report

1. Log on to the SAP BusinessObjects InfoView by entering the address to **http://<hostname>:8080/InfoViewApp** in the browser window.
2. Click **Document List** and navigate to the folder that contains the report.

Figure A.1

Title ^	Last Run	Type	Owner
SM Executive Summary		Web Intelligence Report	Administrator
SM Heat Chart		Web Intelligence Report	Administrator
SM System A		Web Intelligence Report	Administrator
SM System E		Web Intelligence Report	Administrator
SM System F		Web Intelligence Report	Administrator
SM System C		Web Intelligence Report	Administrator
SM System Inventory		Web Intelligence Report	Administrator

Total: 9 objects

- Right-click the **Report** and select **Properties**. The CUID value is the Document ID of the report.

Figure A.2

Properties - SM Heat Chart

▼ **General Properties**

Title:

ID, CUID:

File Name:

Description:

Keywords:

Created: Aug 2, 2013 8:21 AM

Last Modified: Aug 2, 2013 8:21 AM

Last Run On:

Locale: English (United States)

We appreciate your feedback!

If you have comments about this document, you can [contact the documentation team](#) by email. If an email client is configured on this system, click the link above and an email window opens with the following information in the subject line:

Feedback on Integration Guide (Service Health Reporter 9.31)

Just add your feedback to the email and click send.

If no email client is available, copy the information above to a new message in a web mail client, and send your feedback to docfeedback@hp.com.