



HP Universal CMDB

Software Version: 10.11

Release Notes

Document Release Date: October 2015
Software Release Date: June 2014

Legal Notices

Warranty

The only warranties for HP products and services are set forth in the express warranty statements accompanying such products and services. Nothing herein should be construed as constituting an additional warranty. HP shall not be liable for technical or editorial errors or omissions contained herein.

The information contained herein is subject to change without notice.

Restricted Rights Legend

Confidential computer software. Valid license from HP required for possession, use or copying. Consistent with FAR 12.211 and 12.212, Commercial Computer Software, Computer Software Documentation, and Technical Data for Commercial Items are licensed to the U.S. Government under vendor's standard commercial license.

Copyright Notice

© 2002 - 2014 Hewlett-Packard Development Company, L.P.

Trademark Notices

Adobe™ is a trademark of Adobe Systems Incorporated.

Microsoft® and Windows® are U.S. registered trademarks of Microsoft Corporation.

UNIX® is a registered trademark of The Open Group.

Documentation Updates

The title page of this document contains the following identifying information:

- Software Version number, which indicates the software version.
- Document Release Date, which changes each time the document is updated.
- Software Release Date, which indicates the release date of this version of the software.

To check for recent updates or to verify that you are using the most recent edition of a document, go to: <https://softwaresupport.hp.com/>.

This site requires that you register for an HP Passport and to sign in. To register for an HP Passport ID, click **Register** on the HP Support site or click **Create an Account** on the HP Passport login page.

You will also receive updated or new editions if you subscribe to the appropriate product support service. Contact your HP sales representative for details.

Document Changes

Publication Date	Summary of Changes
November 2014 (10.11, 2nd Edition)	Clarified that Red Hat Linux Enterprise Server 6.5 is not supported
October 2015 (10.11, 3rd Edition)	Added a limitation that Internet Explorer 11 is supported for UCMDB UI and UCMDB Browser only

Support

Visit the HP Software Support site at: <https://softwaresupport.hp.com>.

This website provides contact information and details about the products, services, and support that HP Software offers.

HP Software online support provides customer self-solve capabilities. It provides a fast and efficient way to access interactive technical support tools needed to manage your business. As a valued support customer, you can benefit by using the support website to:

- Search for knowledge documents of interest
- Submit and track support cases and enhancement requests
- Download software patches
- Manage support contracts
- Look up HP support contacts
- Review information about available services
- Enter into discussions with other software customers
- Research and register for software training

Most of the support areas require that you register as an HP Passport user and to sign in. Many also require a support contract. To register for an HP Passport ID, click **Register** on the HP Support site or click **Create an Account** on the HP Passport login page.

To find more information about access levels, go to: <https://softwaresupport.hp.com/web/softwaresupport/access-levels>.

HP Software Solutions Now accesses the HPSW Solution and Integration Portal website. This site enables you to explore HP Product Solutions to meet your business needs, includes a full list of Integrations between HP Products, as well as a listing of ITIL Processes. The URL for this website is <http://h20230.www2.hp.com/sc/solutions/index.jsp>.

Contents

HP Universal CMDB, HP Universal Discovery, and HP Configuration Manager Release Notes	4
HP UCMDB, UD, and CM 10.11 Files/Components	4
System Requirements	5
Install Version 10.11 on the UCMDB, UD, and CM Servers	5
HP Universal CMDB 10.11 Manual Data Flow Probe Installation	7
HP Universal CMDB, UD, and CM 10.11 Uninstall Procedure	7
What's New in HP CMS Version 10.11	9
Restrict User Access to a Limited Subset of the UCMDB Server JMX Methods	13
New Custom Report: Licensed OSIs Report	15
How to Filter Discovery Results	17
Configure Filtering in UCMDB	17
Global Filtering Dialog Box	18
Notes and Limitations	21
HP UCMDB	21
Universal Discovery	21
Fixed Defects for UCMDB 10.11	22
Send Documentation Feedback	25

HP Universal CMDB, HP Universal Discovery, and HP Configuration Manager Release Notes

This document provides information about version 10.11 of the Configuration Management System, which is comprised of HP Universal CMDB 10.11 (UCMDB), HP Universal Discovery 10.11 (UD), and HP UCMDB Configuration Manager 10.11 (CM).

Important Note: The Configuration Management System (UCMDB, UD, and CM) version 10.11 is a lightweight and easy to deploy release (similar to a CUP release), where the probes are automatically upgraded as part of the process. We strongly encourage you to move to UCMDB, UD, and CM version 10.11 and the accompanying Content Pack 14.00. There will be no further CUP releases on top of UCMDB version 10.10 or content pack updates on top of Content Pack 13.00.

Note: Before you deploy Content Pack 14.00, you must install version 10.11 on the UCMDB, UD, and CM servers, and deploy version 10.11 Data Flow Probes. Do not deploy Content Pack 14.0 while you are still updating the Data Flow Probes.

For information about HP UCMDB Universal Discovery Content Pack 14.00, see the *Release Notes* for HP UCMDB Universal Discovery Content Pack 14.00.

HP UCMDB, UD, and CM 10.11 Files/Components

HP UCMDB, UD, and CM 10.11 is provided with the following files/components:

	Included Files
Windows	<p>The UCMDB_00140.zip includes the following files/components:</p> <ul style="list-style-type: none"> • HPUCMDB_Server_Patch_10.11.exe. Launches the installation of the version 10.11 HP UCMDB Server for the Windows platform. • HPCM_Patch_10.11.exe. Launches the installation of the version 10.11 HP UCMDB Configuration Manager for the Windows platform.
Linux	<p>The UCMDB_00141.zip includes the following files/components:</p> <ul style="list-style-type: none"> • HPUCMDB_Server_Patch 10.11.bin. Launches the installation of the version 10.11 HP UCMDB Server for the Linux platform.

	Included Files
	<ul style="list-style-type: none"> • HPCM_Patch_10.11.bin. Launches the installation of the version 10.11 HP UCMDB Configuration Manager for the Linux platform.
Both	<ul style="list-style-type: none"> • HPUCMDB_ReadMe_10.11.txt

System Requirements

For a list of system requirements, see the **HP UCMDB Support Matrix** pdf. Check the most previous Release Notes for any additions or changes to the matrix.

Note: If you are using an Oracle version that is prior to 10.2.0.5, you must apply the Oracle patch that fixes Oracle defect # 5866410. For details, go to the Oracle website and find the information regarding this defect number.

Install Version 10.11 on the UCMDB, UD, and CM Servers

The installation for HP Universal CMDB, Universal Discovery, and Configuration Manager is performed through an automated procedure using the installation wizard.

You can still install the Data Flow Probes separately by upgrading the Data Flow Probes using the UCMDB user interface. For details, see "[HP Universal CMDB 10.11 Manual Data Flow Probe Installation](#)" on [page 7](#).

Note:

- HP UCMDB 10.11 can be installed on top of HP Universal CMDB version 10.10, 10.10 CUP1, or 10.10 CUP2 only.
- HP UCMDB CM 10.11 can be installed on top of HP UCMDB CM 10.10, 10.10 CUP1, or 10.10 CUP2 only.
- HP UCMDB CM 9.x supports HP UCMDB 10.x.

Pre-requisites - UCMDB Server and Data Flow Probes

1. Extract **UCMDB_00140.zip** (for Windows) or **UCMDB_00141.zip** (for Linux) to a temporary directory.

2. Stop the HP Universal CMDB 10.10 (with or without CUP1/CUP2) server and the HP Universal CMDB Integration Service (if running) before starting the 10.11 installation.

Note: If you have a High Availability configuration, 10.11 must be installed on all the servers in the cluster, and prior to installation, you must stop all the servers in the cluster.

3. If you have received private patches for the Data Flow Probe, you must delete them before performing the upgrade. These steps for deleting a private patch must be followed whether you are upgrading the probes during the installation wizard, or if you upgrading the probes using the UCMDB user interface after installation is complete.
 - a. Stop the Data Flow Probe.
 - b. Delete all private patches that were installed on the system prior to version 10.11 by deleting the following directory:

\\hp\UCMDB\DataFlowProbe\classes
 - c. Start up the version 10.10 Data Flow Probe.

Installation

You must first install UCMDB 10.11, start up the server, and then perform the Configuration Manager (CM) installation.

1. For UCMDB: Double-click the file **HPUCMDB_Server_Patch_10.11.exe** (for Windows) or **HPUCMDB_Server_Patch_10.11.bin** (for Linux) to open the HP Universal CMDB Server Installation Wizard.

For Configuration Manager: Double-click the file **HPCM_Patch_10.11.exe** (for Windows) or **HPCM_Patch_10.11.bin** (for Linux) to open the HP Universal CMDB Configuration Manager Installation Wizard.

2. While running the wizard:
 - In the Choose Install Folder screen, select the installation directory in which UCMDB/CM is already installed.
 - For UCMDB, in the Install Data Flow Probe screen, select the following option:
 - **Automatically update Data Flow Probe** to automatically update during this installation all the Data Flow Probes reporting to this UCMDB.

- **Update the Data Flow Probe manually** to update the Data Flow Probes reporting to this UCMDB using the UCMDB user interface after completing the installation on the UCMDB server. For details, see "[HP Universal CMDB 10.11 Manual Data Flow Probe Installation](#)" [below](#).
 - In the Required Actions screen, follow the instruction to ensure that the server is down.
3. Once the installation wizard for UCMDB is completed, start up version 10.11. Go back to step 1 to install CM 10.11.

Once the CM installation is completed, start up Configuration Manager version 10.11.

HP Universal CMDB 10.11 Manual Data Flow Probe Installation

(Applicable only when **Update the Data Flow Probes manually** is selected in the installation wizard.)

To install the Data Flow Probe upgrade using the UCMDB user interface, follow these steps.

Note: All Data Flow Probes that are associated with the UCMDB are upgraded.

1. If you have received private patches for the Data Flow Probe, perform the steps in the section "[Pre-requisites - UCMDB Server and Data Flow Probes](#)" on page 5.
2. In UCMDB, go to **Data Flow Management > Data Flow Probe Setup**, and click **Deploy Probe Upgrade**.
3. In the Deploy Probe Upgrade dialog box, navigate to the **<SERVER_HOME>\content\probe_patch\probe-patch-10.11-windows/linux.zip** and click **OK**.

HP Universal CMDB, UD, and CM 10.11 Uninstall Procedure

When performing the uninstall procedure, this procedure must be performed for both the UCMDB Server and the Data Flow probes, as well as Configuration Manager.

1. Stop the HP Universal CMDB and CM servers, and all running Data Flow Probes before uninstalling version 10.11.

2. For UCMDB:
 - Windows: Go to **<CMDB installation folder>\Uninstaller 10.11** and double-click **Uninstall HP Universal CMDB Server**. After version 10.11 is successfully uninstalled, go to **<CMDB installation folder>\runtime** and delete the **jsp** and **jetty-cache** folders.
 - Linux: Go to **<CMDB installation folder/Uninstaller 10.11** and run **Uninstall HP Universal CMDB Server**. After version 10.11 is successfully uninstalled, go to **<CMDB installation folder>/runtime** and delete the **jsp** and **jetty-cache** folders.
3. For Configuration Manager:
 - Windows: Go to **Start** menu > **Programs** > **HP Universal CMDB Configuration Manager 10.11** and double click **Uninstall HP Universal CMDB Configuration Manager 10.11**.
 - Linux: Go to **<CM installation folder/_sp_installation/** and run **HPCM_10.11-Uninstall**.
4. Uninstall all existing Probes as follows:
 - a. **Start > All Programs > HP UCMDB > Uninstall Data Flow Probe.**
 - b. Undeploy the **probeUpdate** package.
5. Reinstall the Probes with the same configuration, that is, use the same Probe IDs, domain names, and server names as for the previous Probe installations. Remember that the Probe ID is case sensitive.

Note: After performing an upgrade and installing the new Data Flow Probe, all the Discovery jobs that were active before the upgrade are automatically run.

6. Start the UCMDB server and once it is up, start the CM server.

What's New in HP CMS Version 10.11

Version 10.11 of the Configuration Management System is comprised of Universal CMDB 10.11 (UCMDB), Universal Discovery 10.11 (UD), and UCMDB Configuration Manager 10.11 (CM).

This release enables a higher level of enterprise readiness by:

- Allowing you to manually assign additional roles to integration users, which will be maintained regardless of the LDAP mappings or user logins
- Providing support for Safari on Mac OS X for UCMDB UI
- Allowing you to restrict user access to a limited subset of the UCMDB server JMX methods
- Providing new Licensed OSIs Report
- Offering enhanced execution of Push jobs
- Extending support coverage on Microsoft Windows Server 2012 R2 (Datacenter and Standard)
- Providing support for Firefox ESR 24 and Windows Internet Explorer 11
- Adding more debugging options to provide easy access to communication log and to allow you to run scanners with debug/trace log
- Allowing you to use the UCMDB interface to create filters to include or exclude specific CIs during discovery population
- Offering performance improvement for the Inventory Discovery by Scanner job, the Data Flow Probe during redundancy checks, and PostgreSQL JDBC

As part of the CMS system, HP Universal CMDB enables large enterprises and service providers to manage the configuration of their IT resources in a comprehensive and secure way while delivering value to end users and integrated applications.

Enhanced User Role Assignments Management

The User Management module now allows you to manually assign additional roles to users in addition to the role assignment from LDAP mappings. The additional roles assignments will be maintained regardless of the LDAP mappings or user logins.

For example, User A from "AUTO" LDAP group is mapped to AUTO UCMDB group and gets its roles (that is, AUTO role). Then, the Admin finds User A in UCMDB User Management module and assigns the Admin role to the user . Now User A get permissions from two roles: AUTO role + Admin role.

Support for Safari on Mac OS X for UCMDB User Interface

To bypass the UCMDB applet limitations inside Mac OS X browsers, UCMDB implemented workarounds to provide support for Max OS X browser with a smooth user experience. For example, as a workaround for the "Drag and drop" functionality, you can use the "Move to" action in the context menu to achieve the purpose.

In addition to UCMDB Browser, UCMDB Admin UI now also supports Safari Browser running on Mac OS X with a smooth user experience.

Support for Microsoft Windows Server 2012 R2 (Datacenter and Standard)

UCMDB now supports running on Microsoft Windows Server 2012 R2 (Datacenter and Standard).

Support for Firefox ESR 24 and Windows Internet Explorer 11

Support for the following web browsers is now available for running UCMDB:

- Firefox ESR 24
- Windows Internet Explorer 11 (for UCMDB UI and UCMDB Browser only)

Define Roles that Can Only Access a Limited Subset of the UCMDB Server JMX Methods

As a system administrator, you can now define roles in the system that can only access a limited subset of the JMX methods. For details, see ["Restrict User Access to a Limited Subset of the UCMDB Server JMX Methods" on page 13](#).

New Custom Report: Licensed OSIs Report

The new custom report (Licensed OSIs Report) is visible to users with the Administrator permissions only. Like other custom reports, you can schedule and export the report, you can also send the report by email.

For details, see ["New Custom Report: Licensed OSIs Report" on page 15](#).

Enhanced Execution of Push Jobs

Newly scheduled push jobs will take into account the tenants assigned to the user who created the job. The job will only push CIs that are associated to those tenants.

For ad-hoc push job executions, the tenants assigned to the logged in user determine the data that is being pushed.

HP Universal Discovery (UD) software provides visibility into IT environments by automatically discovering and mapping IT applications and infrastructure elements. This is an overview of the main new features and enhancements in Universal Discovery 10.11.

More Debugging Options Available

More debugging options are now available, providing easy access to communication log as well as the ability to run the scanners with the debug/trace log and to download the scanner log.

In **Data Flow Management > Discovery Progress Dialog Box > Triggered CIs View > CI Count View > CI Instance View**, if you right click a CI and select **Debug**, you will find the additional debugging options as follows:

- **Rerun Discovery**
 - **Enable Communication Log.** Creates a log file for this session. The log file contains information about the connection between the Probe and a remote machine.

Note: To capture results about the connection, see the **Enable Communication Log And Record Results** option in this menu.
 - **Enable Communication Log And Record Results.** Creates a log file for this session. The log file contains information about the connection between the Probe and a remote machine. Additionally, it enables capturing the discovered results; these discovered results may help in investigating various discovery problems.
 - **Enable Scanner Debug Log.** Used for most scanner debugging purposes.
 - **Enable Scanner Trace Log.** Used for more comprehensive scanner debugging purposes.
- **Download Scanner Log.** Saves the debug or trace log to a specified location.

If a log for the selected CI is unavailable, enable the debug or trace log using the **Rerun Discovery** menu option.

Enhanced Inventory Discovery via SSH

Inventory Discovery via SSH is enhanced to be able to use a user account that has the shared home directory. For example, the home directory is mounted via NFS or Samba, so that the same directory is used when the user logs into different computers.

In order for this feature to work correctly, Universal Discovery Agent cannot be installed to run under a user account that has the home directory that is shared (for example, mounted via NFS or Samba). If it

is already installed, uninstall it. For more information, see the *How to Completely Uninstall the Universal Discovery Agent* section in the *Data Flow Management Guide*.

To enable this feature, perform the following:

1. Edit the **globalsettings.xml** file which is located in the Adapter Management module under **Resources pane > Packages > AutoDiscoveryContent > Configuration Files**.

Caution: Enabling and then disabling this feature may cause unpredictable behavior.

2. Locate the **enableSSHSharedHomeDir** parameter and set the value to **true**. The default is **false**.

Note:

- Do not install Universal Discovery Agent to run under a user account that has the shared home directory (for example, mounted via NFS or Samba) after you enable this feature.
- In UCMDB, you may unexpectedly see newly-created empty Node CIs. You can delete them, or wait for the aging mechanism to delete them (usually after 40 days).
- The software utilization information cannot be reported by the Inventory Discovery by Scanner job when using the SSH protocol.

Improved Performance for the Inventory Discovery by Scanner job, the Data Flow Probe during redundancy checks, and PostgreSQL JDBC

To optimize performance of the Inventory Discovery by Scanner job, the maximum amount of threads for the job adapter is extended to 20.

To improve the performance of the Data Flow Probe during redundancy checks, you can now manually add the following parameter to the configuration file of the Data Flow Probe (`DataFlowProbe.properties`) and set it to `true`:

```
appilog.agent.local.process.result.filterRedundant.reportIgnoredWarning=true
```

This parameter instructs the probe not to generate a warning message for a CI that UCMDB has flagged as ignored. By default, the parameter does not exist in the **DataFlowProbe.properties** file, and its default value is `false`.

To increase robustness, the PostgreSQL JDBC timeout setting is increased to 6,000 seconds.

Added Quick Search Functionality for Data Flow Probe JMX Methods

You can now search for Data Flow Probe JMX methods in the Data Flow Probe JMX Console.

Displaying Probe Connected Status Correctly

UD is now capable of displaying probe connected status correctly even when a probe is busy.

Creating Filters to Include or Exclude Specific CIs During Discovery

You can create filters to include or exclude specific CIs during discovery. These filters are set in the Adapter Management module, using the **GlobalFiltering.xml** file. For details, see "[How to Filter Discovery Results](#)" on page 17.

End-to-End Workflow Walkthrough Guide

The new *End-to-End Workflow Walkthrough Guide* walks you through an end-to-end workflow scenario for the licensing feature. This document is available on the HP Software Support site:

<https://softwaresupport.hp.com>

Restrict User Access to a Limited Subset of the UCMDB Server JMX Methods

As a system administrator, you can now define roles in the system that can only access a limited subset of the UCMDB server JMX methods. This task describes how to set the regex expression to achieve this goal.

To provide this capability, the JMX Permission Services are introduced to enable you set, view, and remove the regex expression:

UCMDB Server JMX Methods

Service	Method	Description
JMX Permission Services	getRegexExpression	Use this operation to get and view the regex expression
	removeRegexExpression	Use this operation to remove the JMX regex expression. Removing the regex means that access will be fully permitted to JMX methods.
	setRegexExpression	Use this operation to set JMX regex expression.

[JMX Search](#) [JMX List](#) [Operations Index](#) (Current Server is a writer: CMS)

UCMDB:service=JMX Permission Services

Operations:

getRegexExpression	getRegexExpression
removeRegexExpression	Removes the JMX Regex expression.
setRegexExpression	setRegexExpression

getRegexExpression

getRegexExpression

removeRegexExpression

Removes the JMX Regex expression.

setRegexExpression

setRegexExpression

Name	Type	Value	Description
regex	java.lang.String	<input type="text"/>	Regex expression

To set the regex expression in order to restrict user access to a limited subset of the UCMDB server JMX methods,

1. Launch your Web browser and enter the following address: **http://<server_name>:<port_number>/jmx-console**, where **<server_name>** is the name of the machine on which UCMDB is installed.
2. Enter the JMX console authentication credentials.
3. Under **UCMDB**, click **UCMDB:service=JMX Permission Services**.
4. Locate the **setRegexExpression** operation, set a regex expression using the setRegexExpression method, and click **Invoke**.

For example, if you type **set** in the **Value** field and click **Invoke**, this means all the operations from JMX that start with the word **set** will be excluded from JMX.

To view the regex expression, locate the **getRegexExpression** operation, and click **Invoke**.

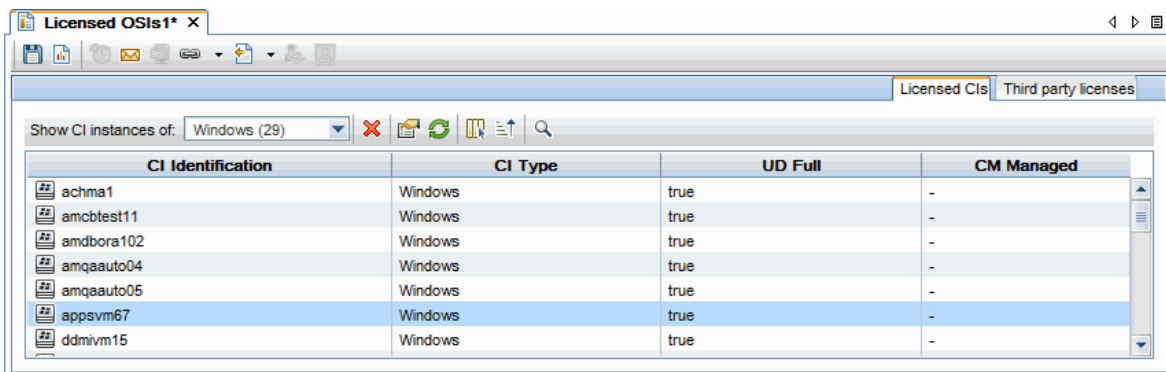
To remove the regex expression, locate the **removeRegexExpression** operation, and click **Invoke**.

Note the following rules when you use the JMX Permission Services to restrict user access to JMX methods:

- Users who have Server Administrator Privileges enabled and have the JMX Full Access permission set will have complete access to the JMX module.
- Users who have Server Administrator Privileges enabled but do not have the JMX Full Access permission set will have access to the JMX module based on a regex expression.
- If no regex expression is set, the user will have full access to JMX, regardless of whether the user has the JMX Full Access permission set or not.
 - JMX Search - If the regex expression is set and the user does not have the JMX Full Access permission, then the operations that match the regex will not show in the search results.
 - Operation Index view - The JMX methods that match the regex expression are not visible to users.

New Custom Report: Licensed OSIs Report

This report shows all the licensed OSIs (UDi and Full) and all third-party licenses that are counted.



To access	<p>Select Modeling > Reports. In the Custom Reports pane, Click Administration and do one of the following:</p> <ul style="list-style-type: none"> • Right-click Licensed OSIs Report and select Create New Report. • Double-click Licensed OSIs Report. • Select Licensed OSIs Report and drag it onto the right pane.
Relevant tasks	"Generate a Custom Report" in the <i>HP Universal CMDB Modeling Guide</i>

User interface elements are described below (unlabeled elements are shown in angle brackets>):

UI Element (A-Z)	Description
<Shortcut Menu>	Right-click a CI in the report to access the IT Universe Manager shortcut menu. For details, see the <i>IT Universe Manager Shortcut Menu</i> section in the <i>Modeling Guide</i> .
<Toolbar>	For details, see the <i>Toolbar Options</i> section in the <i>Modeling Guide</i> .

Licensed CIs Tab

Important Information	To view the change history of a CI, right-click anywhere in the row of the required CI and select CI History .
------------------------------	---

User interface elements are described below (unlabeled elements are shown in angle brackets):

UI Element (A-Z)	Description
<Toolbar>	For details, see the <i>Toolbar Options</i> section in the <i>Modeling Guide</i> .
<Shortcut menu>	For details, see the <i>IT Universe Manager Shortcut Menu</i> section in the <i>Modeling Guide</i> .
CI Identification	The name and icon of the CI.
CI Type	The type of the CI.
CM Managed	Indicates whether a CM license is available or not.
UD Full	The UI element displayed for this column depends on the type of the existing license and whether the license is available or not.
UD Inventory	Indicates whether a UD Inventory license is available or not.

Note: The **CM Managed**, **UD Full**, and **UD Inventory** columns are visible in the user interface if a relevant license of that sort is applied.

Values for these three columns include:

- **"true"** if the CI instance is counted in the relevant context of the similar license, that is, covered by license capacity.
- **"false"** if the CI instance is counted in the relevant context of the similar license, but exceeds

capacity limit.

- "-" if the CI instance is not applicable within the license type mentioned above.

Third party licenses Tab

User interface elements are described below (unlabeled elements are shown in angle brackets):

UI Element (A-Z)	Description
<Toolbar>	For details, see the <i>Toolbar Options</i> section in the <i>Modeling Guide</i> .
Adapter Name	The name of the adapter.
Integration Name	The name of the integration that is taken into consideration for a Managed Data Repository (MDR) license.

How to Filter Discovery Results

This feature describes how to use the UCMDB interface to filter the UCMDB CIs that are discovered.


Configure Filtering in UCMDB

1. Prerequisites

Before creating a filter, perform an analysis on what information you want to map and what data element in the scan file contains the information you want to filter.


2. Select a CI to filter

- a. Select **Adapter Management**.
- b. In the Resources tree, expand the **DDMIinfra** node and then expand the **Configuration Files** node.
- c. Right-click **GlobalFiltering.xml** and select **Open in Frame**.
- d. In the Global Filtering dialog box, click **Include** or **Exclude**.

- **Include.** All CIs that do not match the filter are removed. If this marker is left empty, all results are sent to the server.
 - **Exclude.** All CIs that match the filter are removed. If this marker is left empty, all results are sent to the server.
- e. Click **Select CI Type** . The Select CI Type dialog box opens.

Note: This option is only available when **Include** or **Exclude** is selected in the left pane.

- f. Select a CI for which you want to create a filter, and click **OK**.
3. Select attributes to filter

- a. Click **Select Attribute** . The Select an Attribute dialog box opens.
- b. Select properties for the attribute, and click **OK**.

Note: You can use the "between" operator when filtering results, but only when the Object class is "ip_address" and the attribute name is "name".

For details on CI attribute types, see "Attributes Page" in the *HP Universal CMDB Modeling Guide*.

4. Activate and configure settings

In the Global Filtering Configuration Settings pane, select your options.

Available when: **Global Filtering Configuration** or **Include** or **Exclude** is selected in the left pane.

5. Results

Use the CI Type Manager to verify that data is filtered as expected in UCMDB. For more information, see "CI Type Manager" in the *HP Universal CMDB Modeling Guide*.




Global Filtering Dialog Box

Global filtering enables you to filter Probe results for all adapters, so that only results of interest to you are sent to the UCMDB Server.

To access	In Adapter Management , do the following:
------------------	--

	<ol style="list-style-type: none"> 1. In the Resources tree, expand the DDMiInfra node and then expand the Configuration Files node. 2. Right-click GlobalFiltering.xml and select Open in Frame.
Important Information	Before creating a filter, perform an analysis on what information you want to filter and what data elements contains the information you want to filter.

User interface elements are described below:

UI Element	Description
	<p>Select CI. Opens the Select CI dialog box, enabling you to select a UCMDB CI.</p> <p>Available when: Include or Exclude is selected in the left pane.</p>
	<p>Select an Attribute. Opens the Select an Attribute dialog box, enabling you to add a filter to an attribute for the selected UCMDB CI.</p> <ul style="list-style-type: none"> • Attribute. Select an attribute from the drop down list. • Display Label. Name of the attribute. • Type. Data type of the attribute as it appears in the CI Type Manager. For more information, see "CI Type Manager" in the <i>HP Universal CMDB Modeling Guide</i>.
	Enables you to delete the selected UCMDB CI or the attribute.

Global Filtering Configuration Settings

Enables you to activate filtering. It also enables you to define the behavior of filtering.

Important information	These settings apply to all included and excluded filters.
------------------------------	--

User interface elements are described below:

UI Element	Description
Activate	<p>Enables you to activate filters.</p> <ul style="list-style-type: none"> • Yes. Filters are activated. • No. Filters are not activated.

UI Element	Description
	Default: Yes
Recursive Filtering	<p>Defines a filtering behavior in which filters are applied to CIs that are linked to CIs that have been filtered.</p> <p>Using global filtering, you can filter out a CI so that it is not included in the filter results. This CI may be a root CI, containing other CIs or relationships. By default, during the filter process, the contained CIs and relationships, as well as any CIs related to them, are added to the filter results—including the root CI. This causes undesired filter results. Recursive filtering corrects this by ensuring that if a root CI is filtered out, then any contained CIs or relationships are filtered out too, such that the root CI cannot be found again.</p> <p>Default: No</p>

Attribute Editor

Enables you to define properties of attributes that you want filtered.

Important information	This page is displayed when an attribute is selected in the left pane.
------------------------------	--

User interface elements are described below:

UI Element	Description
Operator	Click the drop down to display a list of operator types.
Value	<p>Type a function that is appropriate for the operator type.</p> <p>The function must return a value.</p>

Notes and Limitations

HP UCMDB	21
Universal Discovery	21

HP UCMDB

- When upgrading the Data Flow Probe:
 - In a multi-customer environment, if the Data Flow Probe is not automatically upgraded to the latest version, use the manual upgrade procedure to upgrade the Probe manually. For details on the manual upgrade procedure, see ["HP Universal CMDB 10.11 Manual Data Flow Probe Installation"](#).
 - The automatic upgrade is not available for Data Flow Probes running on Linux. Use the manual upgrade procedure to upgrade the Probe manually. When the automatic upgrade runs on other Probes, it may begin to run for Probes running on Linux. In such a case, stop the upgrade and run the manual upgrade procedure.
 - When operating the Data Flow Probe Manager and the Data Flow Probe Gateway on separate machines (i.e, separate mode), use the manual upgrade procedure to upgrade the Probe manually. For details on the manual upgrade procedure, see ["HP Universal CMDB 10.11 Manual Data Flow Probe Installation"](#).
- Normally you can always use the Merge CIs option to perform manual merging of CIs. However, in some cases, the Merge CIs option may become disabled, for example, if you deployed UCMDB onto another product (for example, OMi). To enable the disabled Merge CIs option, you can use the Enable Manual Reconciliation setting (in **Infrastructure Settings Manager > General Settings**) to enable manual merging of CIs. The default value for the Enable Manual Reconciliation setting is False.
- **Internet Explorer 11 is supported for UCMDB UI and UCMDB Browser only.**

Universal Discovery

- When setting up the Data Flow Probe, if you import illegal ranges from a CSV file (for example, the start IP is higher than the end IP), no error is displayed. You must fix the invalid range manually.

Fixed Defects for UCMDB 10.11

The following table lists the defects that were fixed in HP UCMDB 10.11.

CR Global ID	Description
QCCR1H89072	Enhanced the sorting of LDAP user groups, which provides the capability to handle a large number of users.
QCCR1H89997	Fixed an issue where an integration job starts immediately when the job uses a cron expression with a start time, but the exact timezone is not specified.
QCCR1H90113	Fixed an issue where editing a package from Package Manager took 20 minutes or longer.
QCCR1H90282	Fixed an issue where the German locale does not apply to scheduled reports.
QCCR1H91200	Fixed an issue where a policy in Configuration Manager does not show the expected results, because parents of the selected types in the hierarchy were also included.
QCCR1H91477	Fixed an issue where refreshing the Data Flow Probe status for the Integration Service caused errors, due to an invalid character in the SQL statement.
QCCR1H91495	Fixed an issue where the instance-based models could not be opened, due to a large number of CIs or to too many levels in the hierarchy.
QCCR1H91504	Fixed issues where error occurs if the imported Domain Scope Document contains overlapping ranges when importing via JMX - no meaningful log is available for debugging purpose. The issue was fixed by adding details about overlapping ranges in the log and allowing users to import overlapping ranges into UCMDB via JMX.
QCCR1H91546	Fixed an issue where the UCMDB Class Model option in the Help menu does not work with French characters.
QCCR1H91608	Fixed an issue where opening the Adapter Management module took a very long time.
QCCR1H91663	Fixed an issue where Data Flow Probes run out of memory every 15 minutes during inventory discovery.
QCCR1H91666	Fixed an issue where the VMware Virtual Center Report custom report is not

CR Global ID	Description
	populated with CIs.
QCCR1H91703	Fixed an issue where the PostgreSQL Account Configuration for the Data Flow Probe showed an incorrect length for the required password.
QCCR1H91746	Fixed an issue where the aging mechanism failed with an error while deleting objects.
QCCR1H91766	Fixed an issue where integration TQL query used with Asset Manager took a very long time.
QCCR1H91786	Fixed an issue with slow functionality for extracting saved searches.
QCCR1H91796	Fixed an issue where XML enrichment services stopped after creating the auto.zsai SAI file.
QCCR1H91839	Fixed an issue where the upgrade procedure failed on the packageAndResourceUpgrader step while attempting to write log messages.
QCCR1H91852	Fixed an issue where special characters in scripts get corrupted by the Package Manager.
QCCR1H91959	Provided a JMX read-only privilege by a new, separate JMX user who is not the admin user. For more details, see "Restrict User Access to a Limited Subset of the UCMDB Server JMX Methods" on page 13.
QCCR1H92016	Fixed an issue where the scan viewer shows the Microsoft SQL server application, but UCMDB does not create the required CI.
QCCR1H92049	Fixed several issues in the UI while operating Show Impact functionality, which result in users unable to correctly confirm the extent of the impact.
QCCR1H92122	Fixed several issues with the UCMDB 10.10 Store and Forward package for Linux.
QCCR1H92320	Fixed an issue where the UCMDB 9.x integration adapter did not transfer the CIs from some Container types. To apply the fix, manually redeploy the Cmdb9xAdapter package.
QCCR1H92455	Fixed an issue where Web Services: UcmdbService.getChangedCIs crashes with error "[200007]. Permission check is not allowed". This occurs when there is no logged-in user.
QCCR1H92505	Provided the capability of filtering on licensed OSIs, according to license

CR Global ID	Description
	summary panel logic.
QCCR1H92519	Fixed an issue where newly created classes containing attribute qualifiers on root_iconproperties caused problems.
QCCR1H92792	Fixed an issue where logging in takes a long time.
QCCR1H92914	Fixed an license count issue where more licenses are being used than the actual number of licenses available. Now it is also possible for user organization to view which CI is consuming a license and how it is computed.
QCCR1H92946	Fixed an issue where the Touch Process did not send updates in some cases.
QCCR1H93016	Fixed an issue where changes in Configuration Manager are not seen automatically.
QCCR1H93086	Fixed an issue with exporting Oracle LMS Report data when the report is located remotely.
QCCR1H93170	Fixed an issue where only nodes were resolved by the BSM 9.22 CI Resolver.

Send Documentation Feedback

If you have comments about this document, you can [contact the documentation team](#) by email. If an email client is configured on this system, click the link above and an email window opens with the following information in the subject line:

Feedback on Release Notes (Universal CMDB 10.11)

Just add your feedback to the email and click send.

If no email client is available, copy the information above to a new message in a web mail client, and send your feedback to cms-doc@hp.com.

We appreciate your feedback!