

# HP Virtualization Performance Viewer 2.00

For the Linux operating system

## Quick Start Guide



### Contents

|  |   |
|--|---|
| Quick Start Guide .....                | 1 |
| Introduction.....                      | 2 |
| Installing HP vPV.....                 | 2 |
| Accessing the HP vPV Interface.....    | 3 |
| Adding Data Sources .....              | 3 |
| Licensing .....                        | 4 |
| Activating the Evaluation License..... | 4 |
| HP vPV Blogs .....                     | 4 |
| Videos.....                            | 4 |
| HP vPV Forum .....                     | 4 |
| Feedback.....                          | 5 |

## Introduction

HP Virtualization Performance Viewer (HP vPV) is a web-based analysis and visualization tool that analyzes performance trends of elements in virtualized environments. It enables virtualization monitoring by providing an overview of the environment, near-real-time and historical data analysis and triaging using an interactive dashboard. It also enables monitoring for cloud and hypervisor environments. HP vPV helps you visualize performance data for elements in the context of each other to rapidly analyze bottlenecks. HP vPV provides performance monitoring, graphing, and reporting in a single interface.

You can use HP vPV to do the following:

### Performance Monitoring

- **Dashboard** provides quick and easy navigation to other HP vPV views.
- **Treemap** provides the graphical representation of the health of the environment. You can also identify and view the problems at a glance. Treemap provides quick analysis of the entities such as Datacenter, Host, or VMs.
- **Workbench** helps you to visualize and triage the performance of the monitored resources. You can troubleshoot problems that occurred in the past for a specific time period. You can draw and view graphs with the help of available metrics. Additionally, you can save frequently used graphs as favorites.
- **Alerts** help to identify and troubleshoot the problem for the alert generated in your virtualized environment.
- **Real Time Guest Drill Down** detects overloads in the environment. You can drill down to determine the VM performance overload issue.

### Capacity Analysis and Optimization

- **Capacity Overview** provides right size recommendation of the resources in the environment.
- **Placement** provides suggestions for adding new VMs based on available or reclaimable capacity.
- **Forecast** helps to project future capacity utilization levels of different resources for a predefined time period. Using the Forecast feature, you can determine the Days to Capacity information to make optimal allocation and placement.
- **Modeler** helps to determine the impact of adding or deleting resources in your environment. You can estimate the future capacity utilization to proactively plan your hardware requirements.

## Installing HP vPV

HP vPV is available as a virtual appliance for easy deployment in the VMware vCenter. You can use the VMware vSphere client interface to deploy the HP vPV virtual appliance. You can install HP vPV using any one of the following methods:

You can download the HP vPV virtual appliance from: <http://www.hp.com/go/vpv>. You can install the HP vPV virtual appliance using the **Deploy OVF Template** functionality of the VMware vSphere client. To log on to the virtual appliance, the username is **root** and password is **vperf\*viewer**. For more information, refer to the VMware documentation.

You can also install HP vPV using the Linux based installer. For more information, see *HP Virtualization Performance Viewer Installation Guide*.

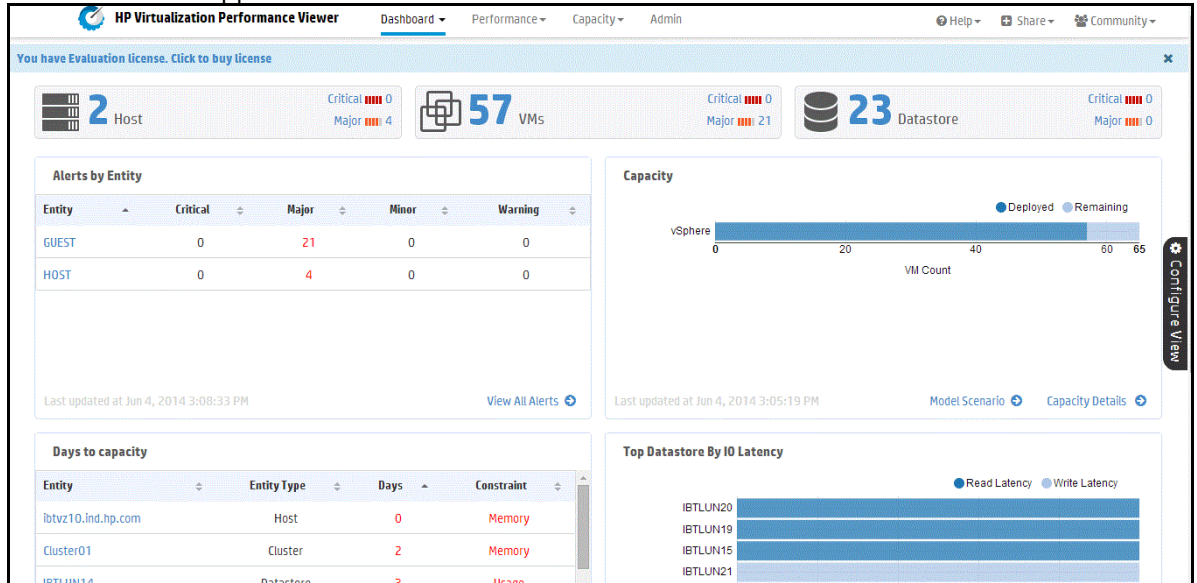
# Accessing the HP vPV Interface

After HP vPV is installed successfully, access the HP vPV interface using one of the following URLs:

[http://<system\\_name>:8081/PV](http://<system_name>:8081/PV) OR [https://<system\\_name>:8444/PV](https://<system_name>:8444/PV)

where, <system\_name> is the system name of the HP vPV server.

HP vPV Interface appears as:




## Adding Data Sources

When accessing HP vPV interface for the first time after installation, Data Sources tab in the Admin page opens. Provide the details of the data sources that HP vPV must monitor.

The screenshot shows the 'Administration' page with the 'Data Sources' tab selected. The form includes a 'Domain' dropdown menu set to 'VMware vCenter'. Below it are input fields for 'vCenter IP/Host Name' (vcenter.host.domain), 'User Name' (test), and 'Password' (masked with asterisks). At the bottom are 'Test Connection' and 'Add' buttons.

HP vPV supports the following data sources:

- VMware vCenter
- Microsoft Hyper-V
- KVM
- Xen
- OpenStack
- HP aPaaS

For more information on adding data sources, open the Data Sources tab on the Admin page and click  in the **Options** pane. This opens the context-sensitive help for the Data Sources tab.

## Licensing

The following types of licenses are available for HP vPV:

- **Community:** The product is free for you to use but certain features are restricted.
- **Evaluation:** You can use the evaluation version of the product, without any feature restrictions, for a period of 60 days. During this period, you can evaluate the product and if required upgrade to the permanent licensed version of the product. For more information on the features available with this license, go to <http://www.hp.com/go/vpv>.
- **Express:** You can use the product but certain features are restricted. The license is valid for a defined subscription period. The validity starts on a date as per the order placed by the subscriber and the capacity value is decided based on the subscription.
- **Premium:** You can use all the product features without any restrictions. Premium license is valid for a defined subscription period. The validity starts on a date as per the order placed by the subscriber and the capacity value is decided based on the subscription.

## Activating the Evaluation License

To activate the evaluation license:

1. Go to the **License Management** tab in the **Admin** page.
2. Click **Start Evaluation**.  
The evaluation license is activated.

**Note:** The evaluation license expires after 60 days and the community license is activated. For more information on licensing, see *License Management* section in *HP Virtualization Performance Viewer Installation Guide*.

## HP vPV Blogs

You can get more information and use cases for HP vPV from the following blog:

<http://h30499.www3.hp.com/t5/forums/tagdetailpage/tag-cloud-grouping/message/tag-cloud-style/recent/message-scope/all/user-scope/all/tag-scope/single/tag-id/38871/timerange/all/tag-visibility-scope/public>

## Videos

To view demo videos and tutorials for HP vPV, see:

<http://www.youtube.com/playlist?list=PLtS6YX0YOX4fsM5fnJcUfDF9R9bJRaZW5>

## HP vPV Forum

You can address any queries regarding HP vPV in the [HP vPV forum](#).

## Feedback

We appreciate your feedback!

If an email client is configured on this system, click

Send Email

If no email client is available, copy the following information to a new message in a web mail client and send the message to [docfeedback@hp.com](mailto:docfeedback@hp.com).

**Product name and version:** HP Virtualization Performance Viewer 2.00

**Document title:** Quick Start Guide

**Feedback:**