

HP Asset Manager

For the Windows® and Linux® operating systems

Software Version: 9.41

Physical Data Models

Document Release Date: June 2014

Software Release Date: June 2014



Legal Notices

Warranty

The only warranties for HP products and services are set forth in the express warranty statements accompanying such products and services. Nothing herein should be construed as constituting an additional warranty. HP shall not be liable for technical or editorial errors or omissions contained herein.

The information contained herein is subject to change without notice.

Restricted Rights Legend

Confidential computer software. Valid license from HP required for possession, use or copying. Consistent with FAR 12.211 and 12.212, Commercial Computer Software, Computer Software Documentation, and Technical Data for Commercial Items are licensed to the U.S. Government under vendor's standard commercial license.

Copyright Notice

© Copyright 1994 - 2014 Hewlett-Packard Development Company, L.P.

Trademark Notices

Adobe™ is a trademark of Adobe Systems Incorporated.

Microsoft® and Windows® are U.S. registered trademarks of Microsoft Corporation.

Documentation Updates

The title page of this document contains the following identifying information:

- Software Version number, which indicates the software version.
- Document Release Date, which changes each time the document is updated.
- Software Release Date, which indicates the release date of this version of the software.

To check for recent updates or to verify that you are using the most recent edition of a document, go to: <http://h20230.www2.hp.com/selfsolve/manuals>

This site requires that you register for an HP Passport and sign in. To register for an HP Passport ID, go to: <http://h20229.www2.hp.com/passport-registration.html>

Or click the **New users - please register** link on the HP Passport login page.

You will also receive updated or new editions if you subscribe to the appropriate product support service. Contact your HP sales representative for details.

Support

Visit the HP Software Support Online web site at: <http://www.hp.com/go/hpsoftwaresupport>

This web site provides contact information and details about the products, services, and support that HP Software offers.

HP Software online support provides customer self-solve capabilities. It provides a fast and efficient way to access interactive technical support tools needed to manage your business. As a valued support customer, you can benefit by using the support web site to:

- Search for knowledge documents of interest
- Submit and track support cases and enhancement requests
- Download software patches
- Manage support contracts
- Look up HP support contacts
- Review information about available services
- Enter into discussions with other software customers
- Research and register for software training

Most of the support areas require that you register as an HP Passport user and sign in. Many also require a support contract. To register for an HP Passport ID, go to:

<http://h20229.www2.hp.com/passport-registration.html>

To find more information about access levels, go to:

http://h20230.www2.hp.com/new_access_levels.jsp

HP Software Solutions Now accesses the HPSW Solution and Integration Portal Web site. This site enables you to explore HP Product Solutions to meet your business needs, includes a full list of Integrations between HP Products, as well as a listing of ITIL Processes. The URL for this Web site is <http://h20230.www2.hp.com/sc/solutions/index.jsp>

Contents

Contents	5
Chapter 1: Overview	7
Tables	8
Links	9
1-1 links	10
1-n and n-1 links	10
n-n links	10
Chapter 2: Portfolio	11
Models	12
Portfolio items	13
Assets	14
Assets linked to the procurement cycle	15
IT equipment	16
Telephones	16
Ports and connections	17
Work Orders	18
Projects	19
Stocks	20
Software Installations	21
Cost Centers	22
Chapter 3: Procurement cycle	23
Procurement cycle	23
Purchase requests	24
Orders	25
Receptions	26
Invoices	27
Assets to be returned	28
Chapter 4: Contracts	29
Contracts	30

Chapter 5: Helpdesk	31
Helpdesk	32
Chapter 6: Financials	33
Budget and expenses	33
Chargebacks	34
Taxes	35
Chapter 7: Cable and Circuit	36
Cables and cable devices	36
Color codes	37
Label rules	38
Pair/conductor types	39
Cable duties	39
Slots	40
Topologies	41
Topology groups	42
Termination-field configurations	43
Cable links	44
Chapter 8: Administration	45
Access to the database	46
Workflows	47
Chapter 9: Organization	48
Employees and Departments	49
Chapter 10: Catalog	50
Catalog	51
We appreciate your feedback!	52

Chapter 1: Overview

This guide presents diagrams that correspond to the physical data models in Asset Manager.

Each of these diagrams contains one or more tables used by the modules in Asset Manager.

Tables	8
Links	9

Tables

Each of the tables represented in this guide is identified by its SQL name.

Examples:

- The Portfolio items table uses the SQL name **amPortfolio**.
- The Assets table uses the SQL name **amAsset**.
- The Locations table uses the SQL name **amLocation**.
- The Employees and departments table uses the SQL name **amEmplDept**.

The most important tables in each diagram are shown as the largest.

Examples:

- The Assets table (**amAsset**) in the "[Assets](#)" diagram on page [14](#).
- The Cables table (**amCable**) in the "[Cables and cable devices](#)" diagram on page [36](#).
- The Taxes table (**amTax**) in the "[Taxes](#)" diagram on page [35](#).

Links

There are three types of links between tables:

- 1-1 links
- 1-n and n-1 links
- n-n links

Type of link	Graphical representation of link
1-1	————
1-n (reverse link of of n-1)	————< and >————
n-n	>————<


Each of the links represented in this guide is identified by its SQL name.

Examples:

- The link going from the Portfolio items table (**amPortfolio**) to the Employees and departments table (**amEmpIDept**) has the SQL name **User**.
- The link going from the Employees and departments table (**amEmpIDept**) to the Portfolio items table (**amPortfolio**) has the SQL name **ItemsUsed**.

Note: The SQL name of a link assumes that one of the linked tables is the source table and the other is the destination table. Thus, the **User** link between the source table (**amPortfolio**) indicates that the link points to the user record of the destination table (**amEmpIDept**). It's reverse link, though, is named **ItemsUsed**. This link points to the records of the assets used by a given user. In this case, the source table is that of Employees and departments and the destination table is that of portfolio items.

In an effort not to overload our diagrams, reverse links are not represented. The choice of a link and its reverse link is arbitrary. If you want to find out what the SQL name of a reverse link is:

1. Launch Asset Manager Application Designer.
2. Open your database description.
3. Select the table of your choice.
4. Click .
5. Select a link.
6. The SQL name of its reverse link is indicated in the **Reverse link** field.

1-1 links

This kind of link means that:

- One record in the source table is linked to one record in the destination table.

Example: The **Asset** link between the Computers table (**amComputer**) and the Assets table (**amAsset**) in the "IT equipment" diagram on page 16. This link indicates that only one computer record can be linked to only one asset record.

1-n and n-1 links

A 1-n link means that:

- One record from the source table can be linked to several records in the destination table.
- Several records in the destination table can be linked to one record in the source table.

Example: The **Rents** link between the Contracts table (**amContracts**) and the Contract rents (**amCntrRent**) table in the "Contracts" diagram on page 30. This link indicates that one contract record can be linked to several contract rent records.

A n-1 link means that:

- Several records in the source table can be linked to one record in the destination table.
- One record in the destination table can be linked to several records in the source table.

Example: The **Model** link between the Assets table (**amAsset**) and the Models table (**amModel**) in the "Models" diagram on page 12. This link indicates that several asset records can correspond to the same model record.

n-n links

This type of link means that:

- Several records in the source table can be linked to several records in the destination table.

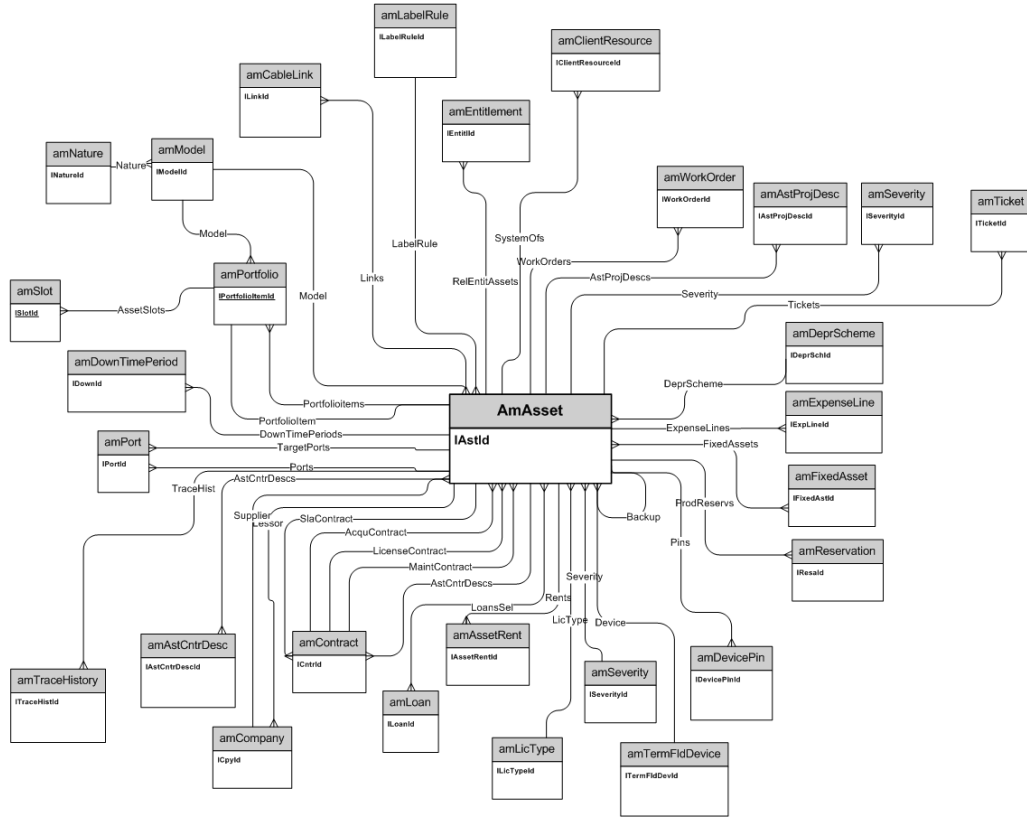
Example: The **FuncRights** link between the User profiles table (**amProfile**) and the Functional rights table (**amFuncRight**) in the [Access to the database](#) diagram on page 46. This link indicates that an asset record can be linked to several functional right records and that a functional right record can be linked to several user profile records.

Chapter 2: Portfolio

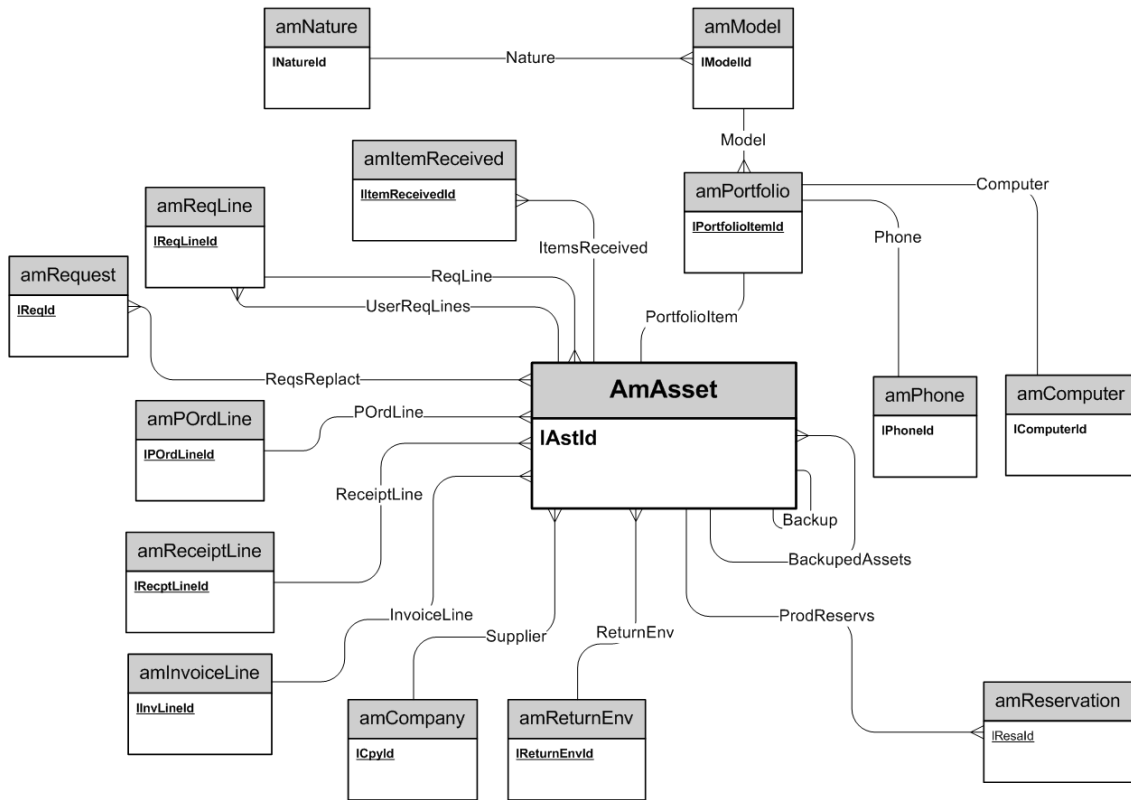
This chapter presents diagrams of the following physical data models:

Models	12
Portfolio items	13
Assets	14
Assets linked to the procurement cycle	15
IT equipment	16
Telephones	16
Ports and connections	17
Work Orders	18
Projects	19
Stocks	20
Software Installations	21
Cost Centers	22

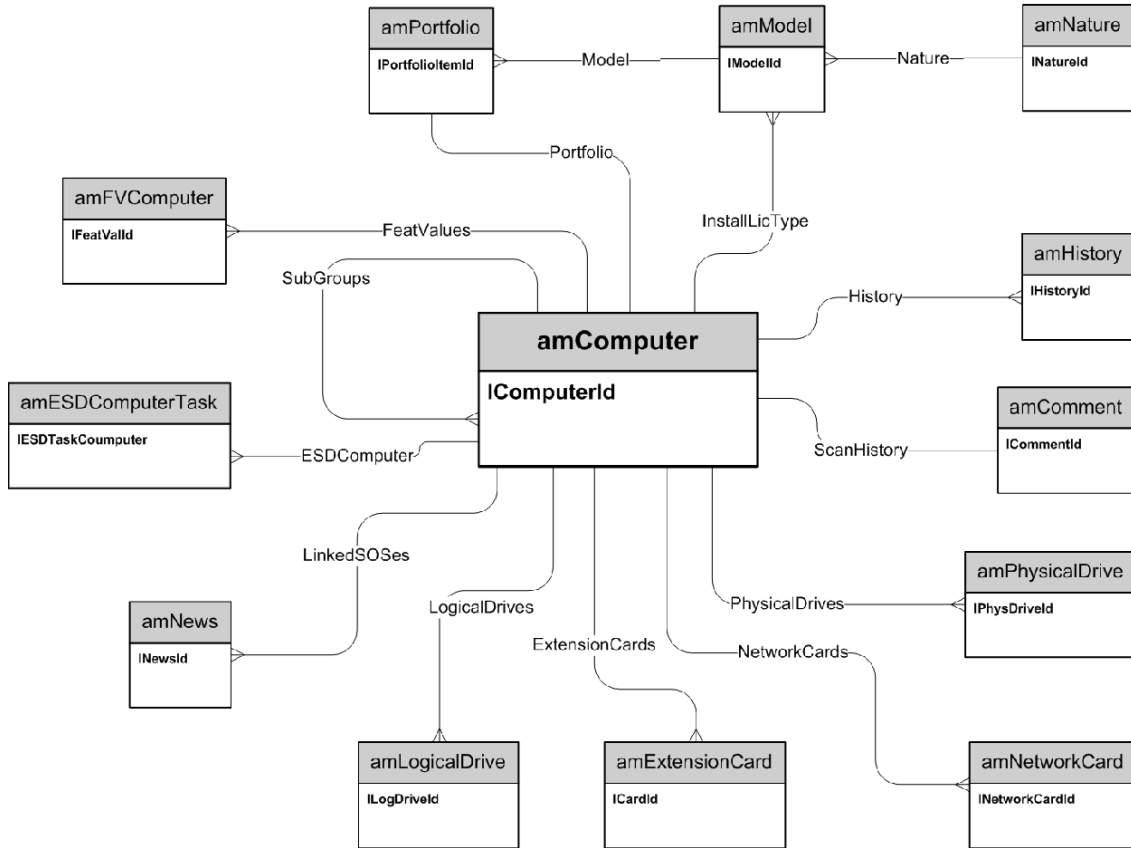
Assets



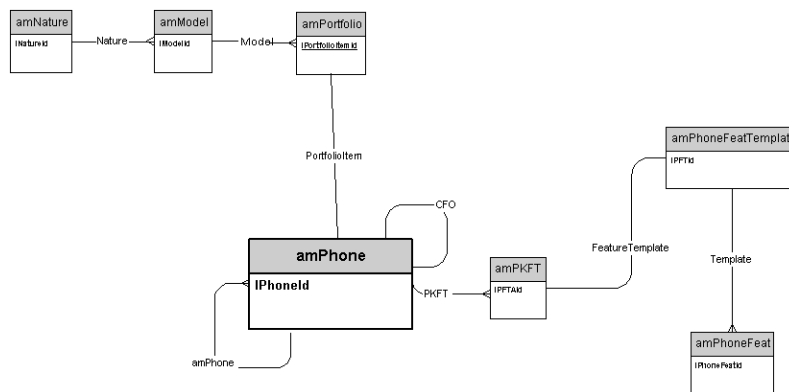
Assets linked to the procurement cycle



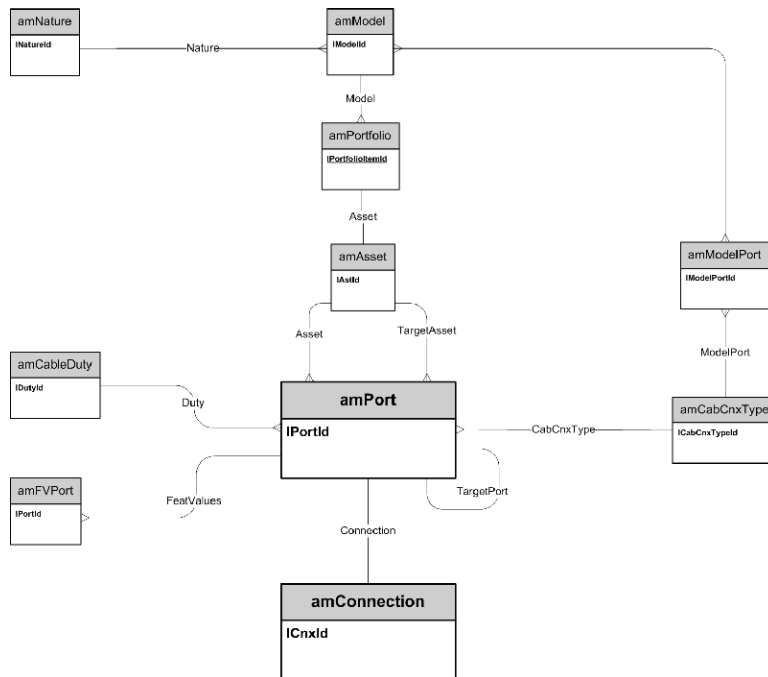
IT equipment



Telephones

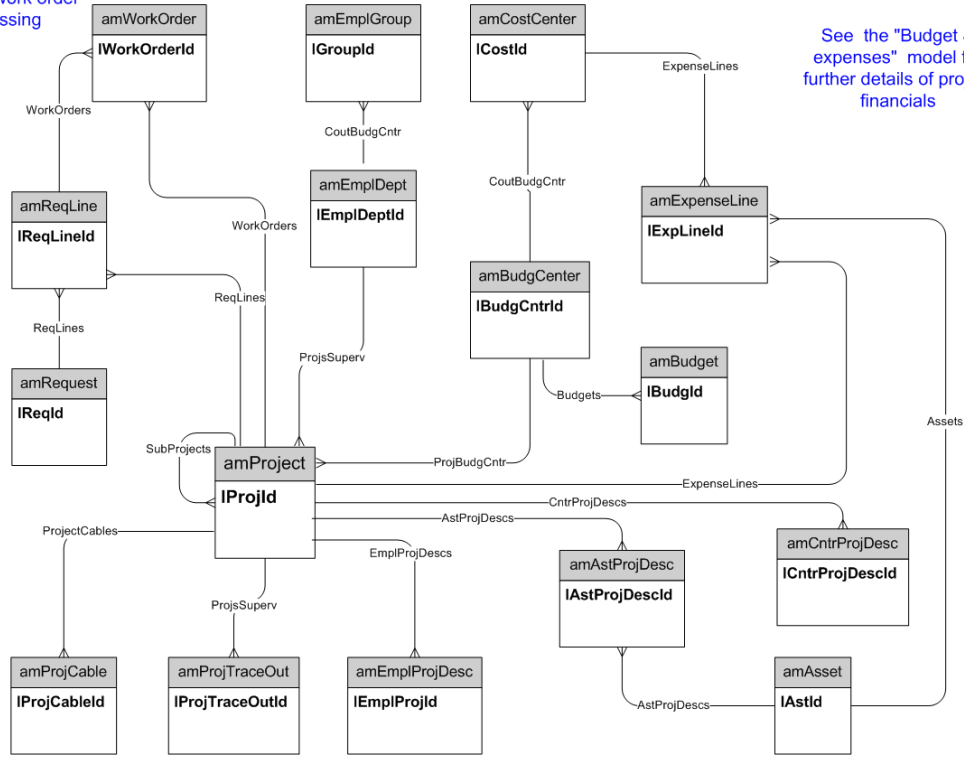


Ports and connections



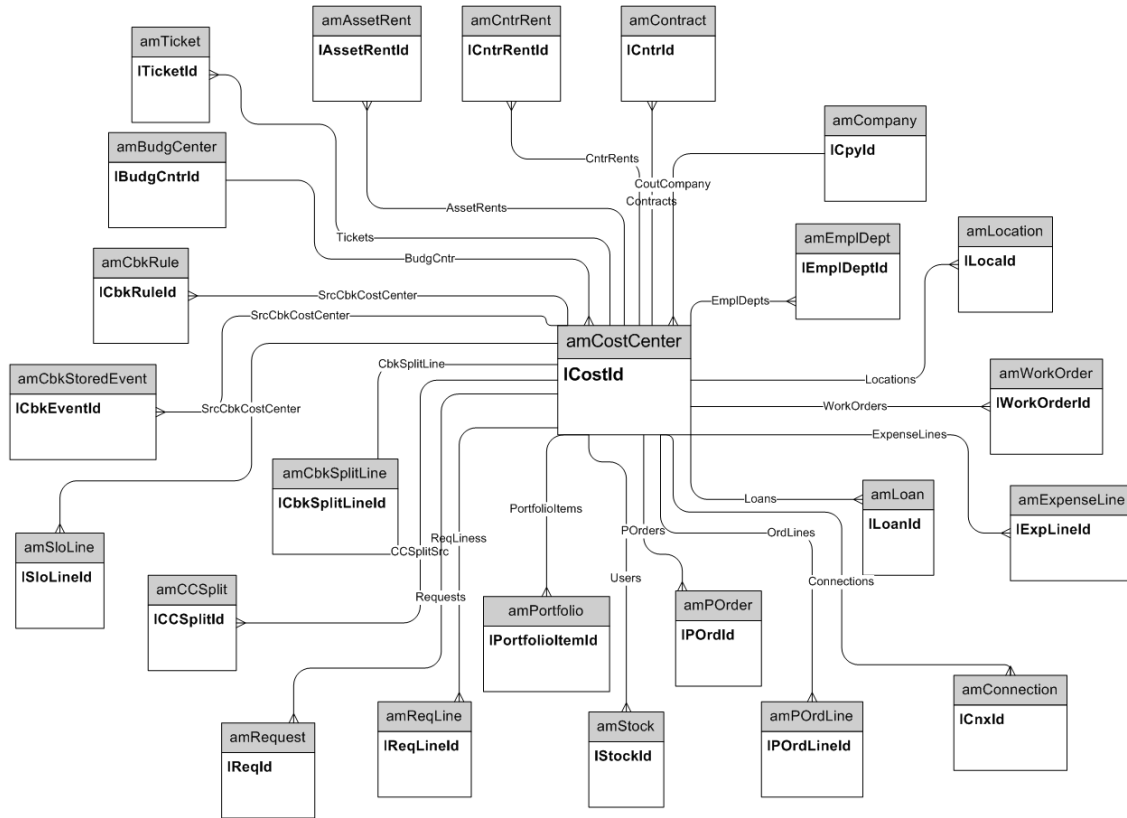
Projects

See the "Work Orders" model for further details of work order processing



See the "Budget & expenses" model for further details of project financials

Cost Centers

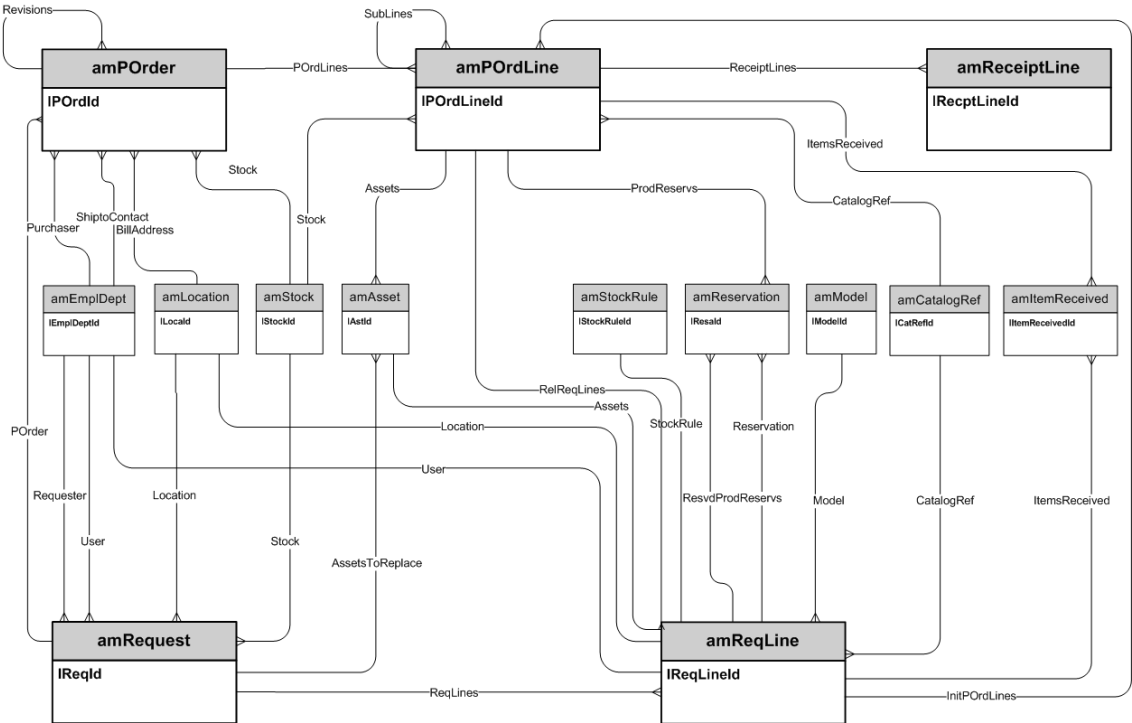


Chapter 3: Procurement cycle

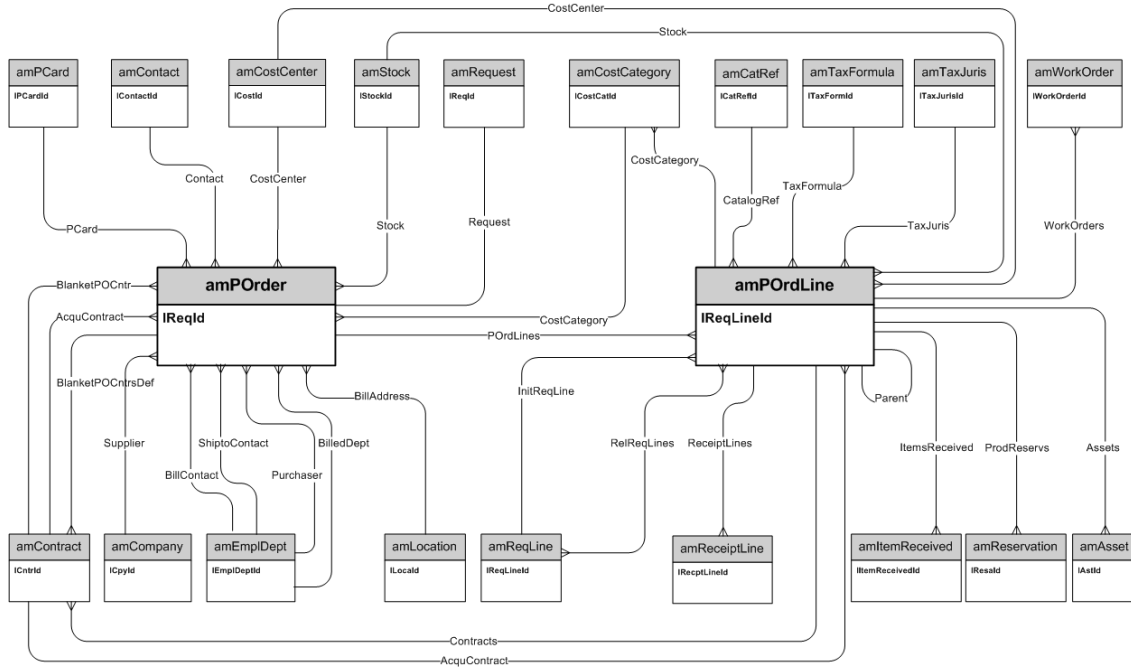
This chapter presents diagrams of the following physical data models:

- Procurement cycle 23
- Purchase requests 24
- Orders 25
- Receptions 26
- Invoices 27
- Assets to be returned 28

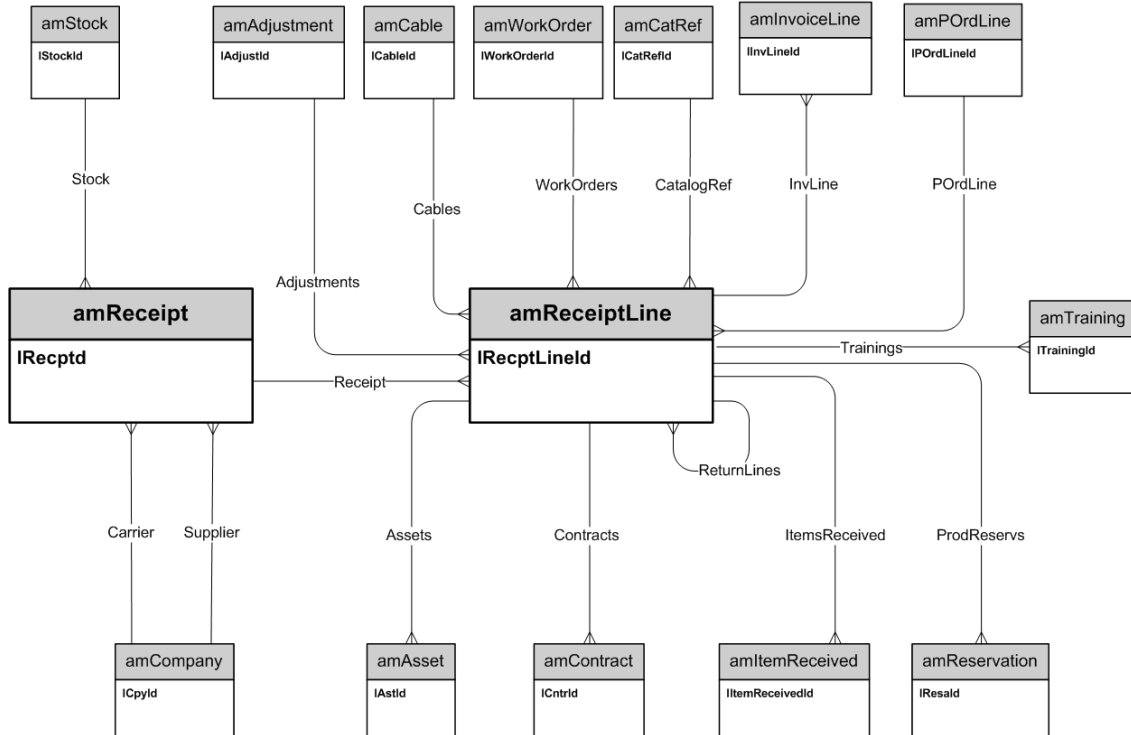
Procurement cycle



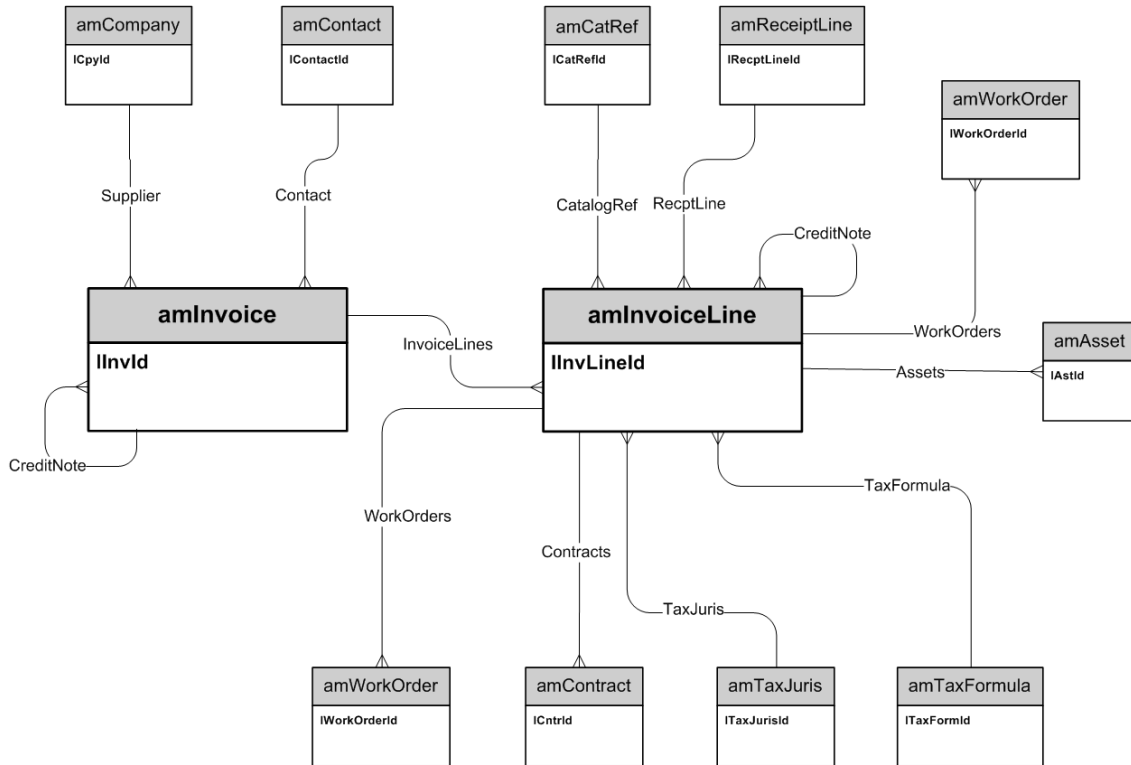
Orders



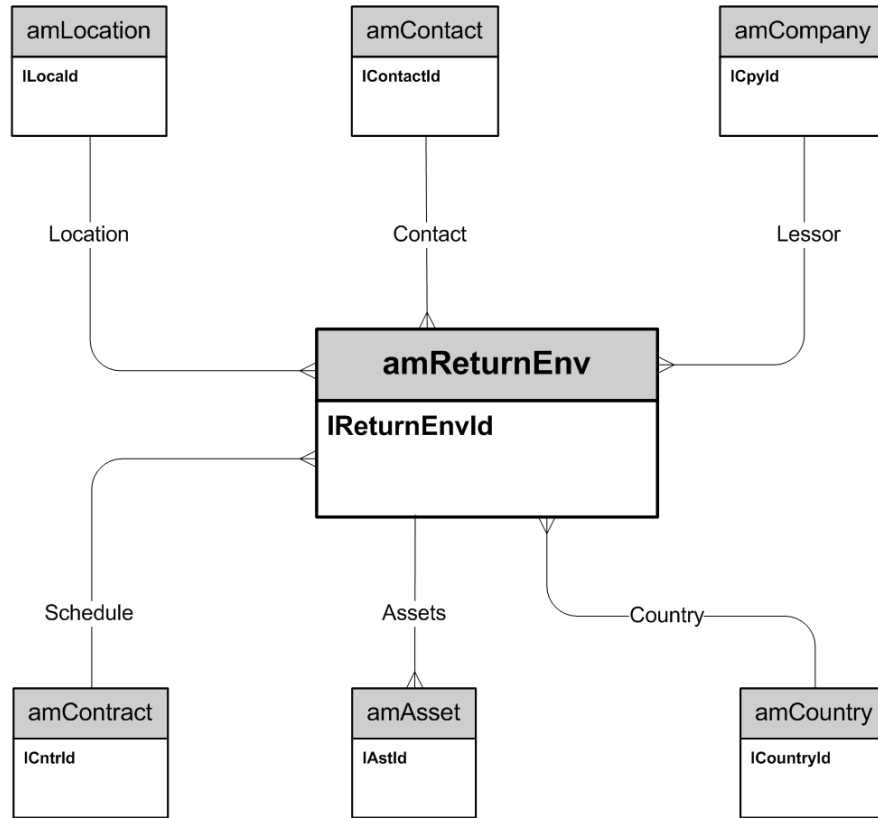
Receptions



Invoices



Assets to be returned



Chapter 4: Contracts

This chapter presents the diagram of the following physical data model:

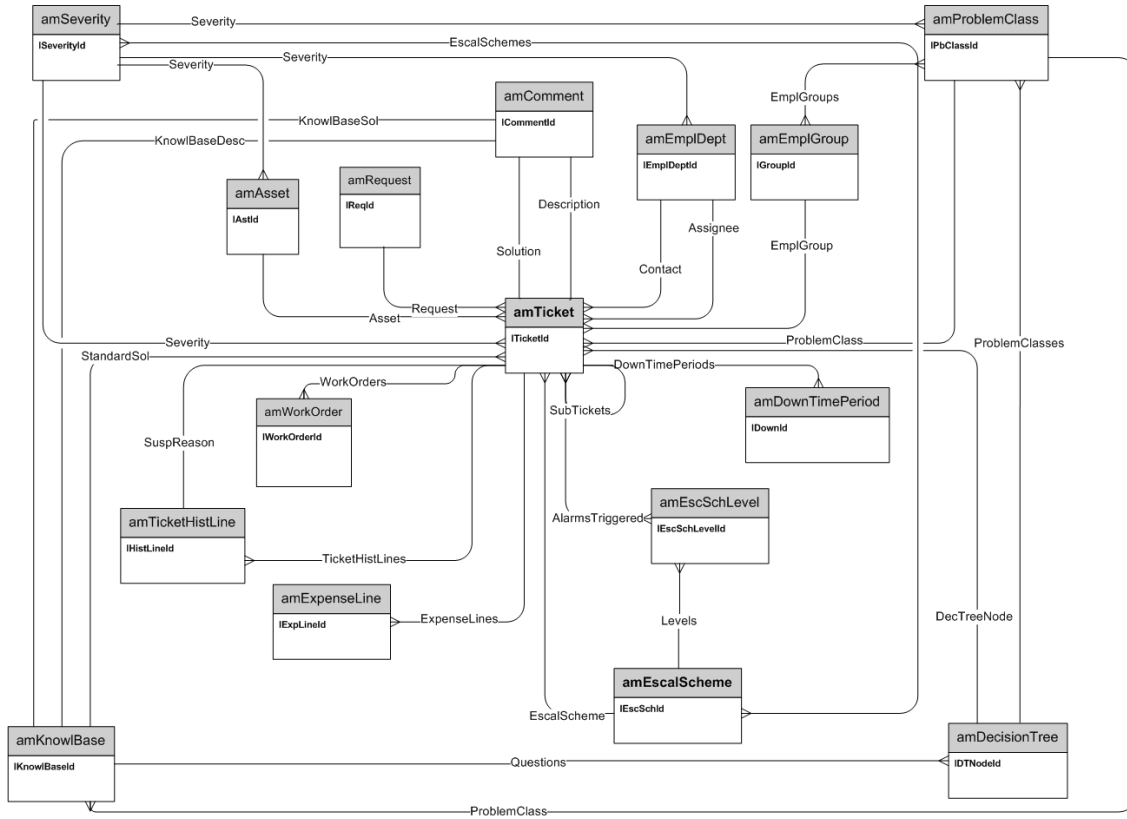
Contracts	30
-----------------	----

Chapter 5: Helpdesk

This chapter presents the diagram of the following physical data model:

Helpdesk	32
----------------	----

Helpdesk

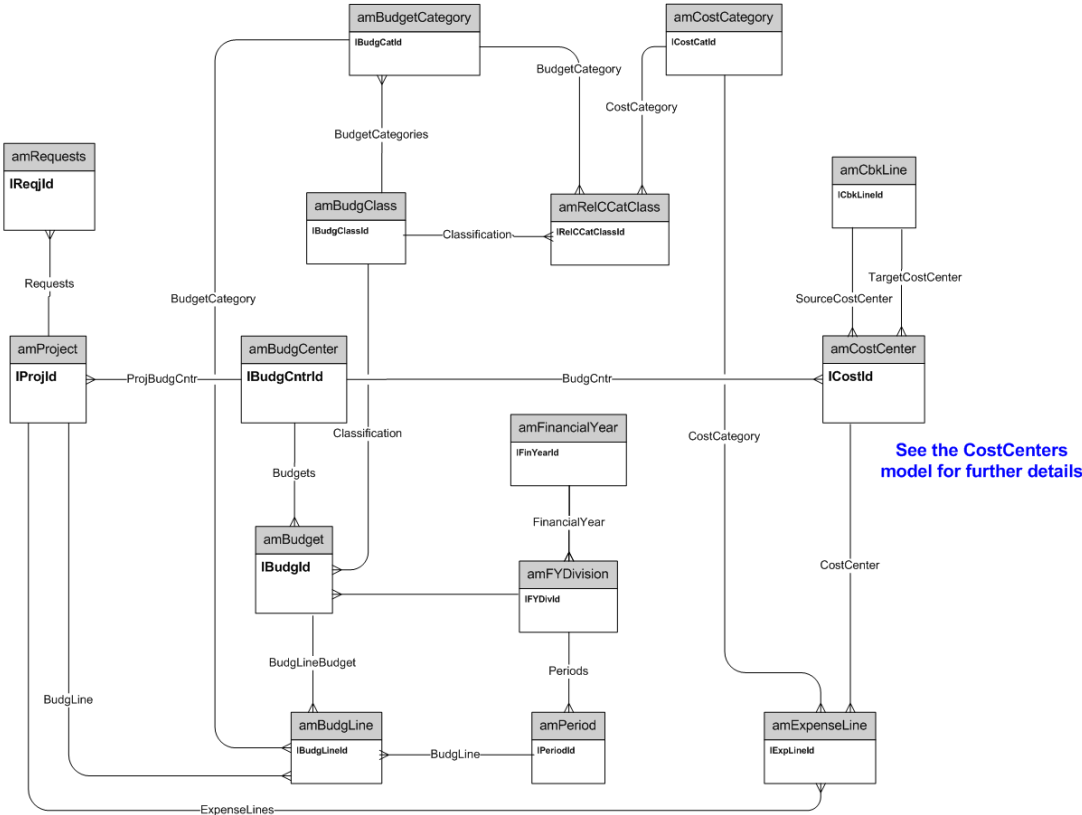


Chapter 6: Financials

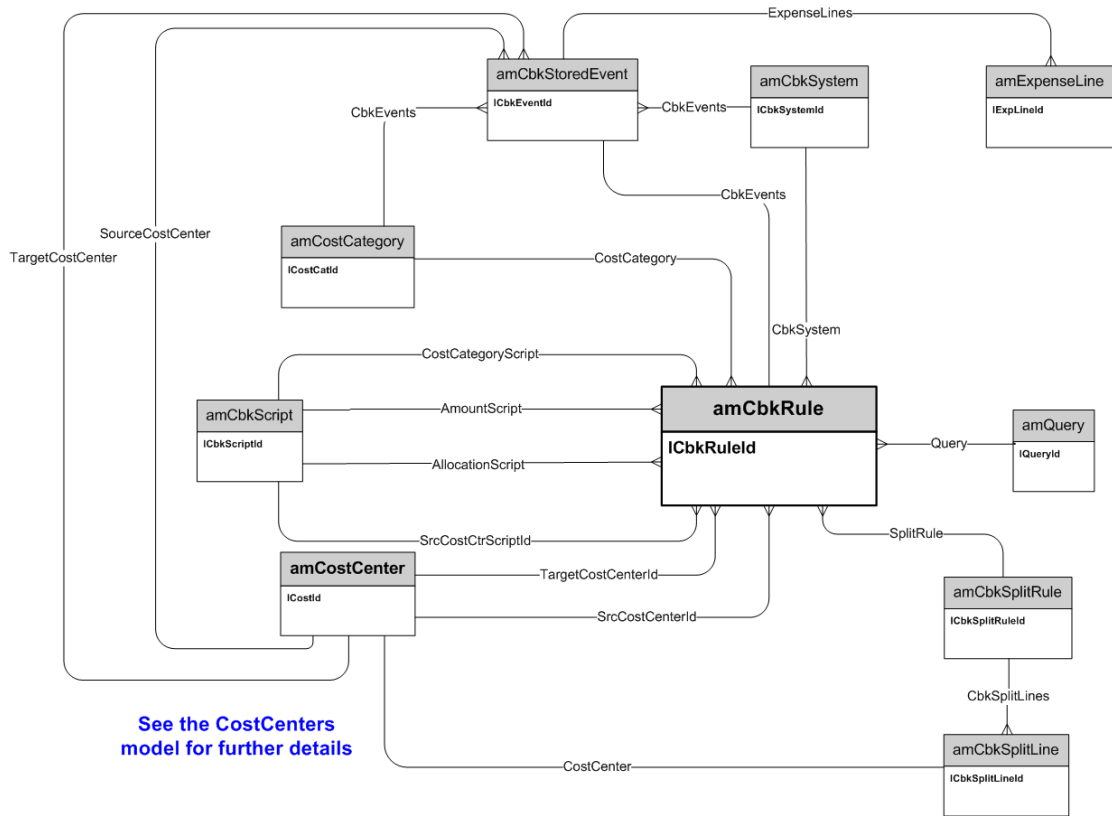
This chapter presents diagrams of the following physical data models:

- Budget and expenses 33
- Chargebacks 34
- Taxes 35

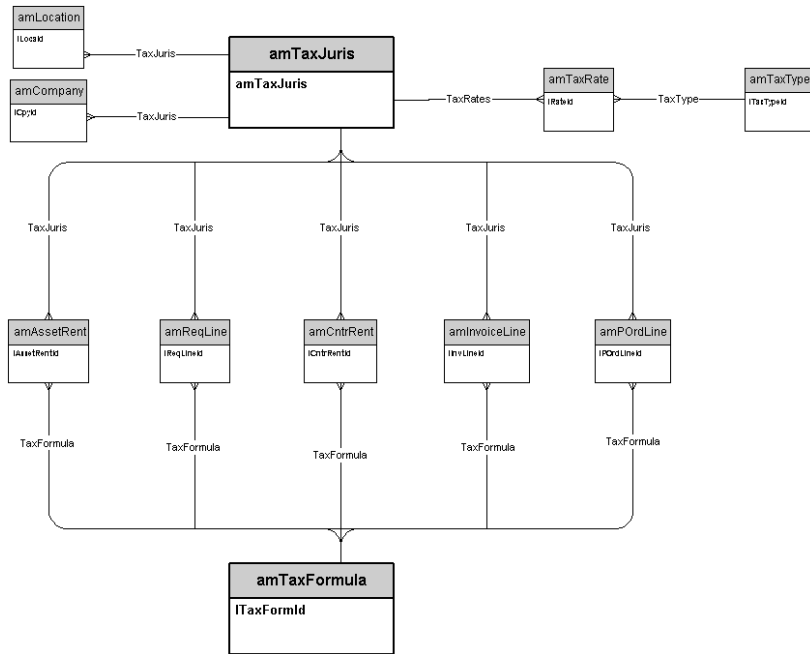
Budget and expenses



Chargebacks



Taxes

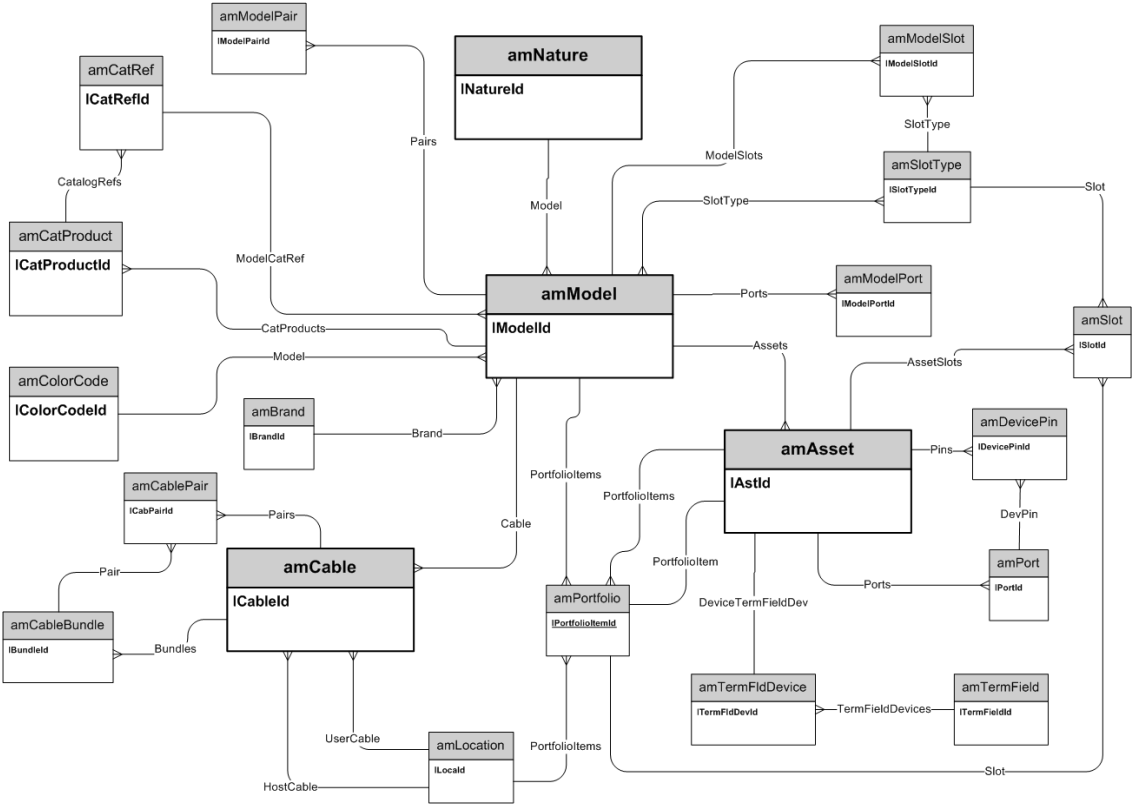


Chapter 7: Cable and Circuit

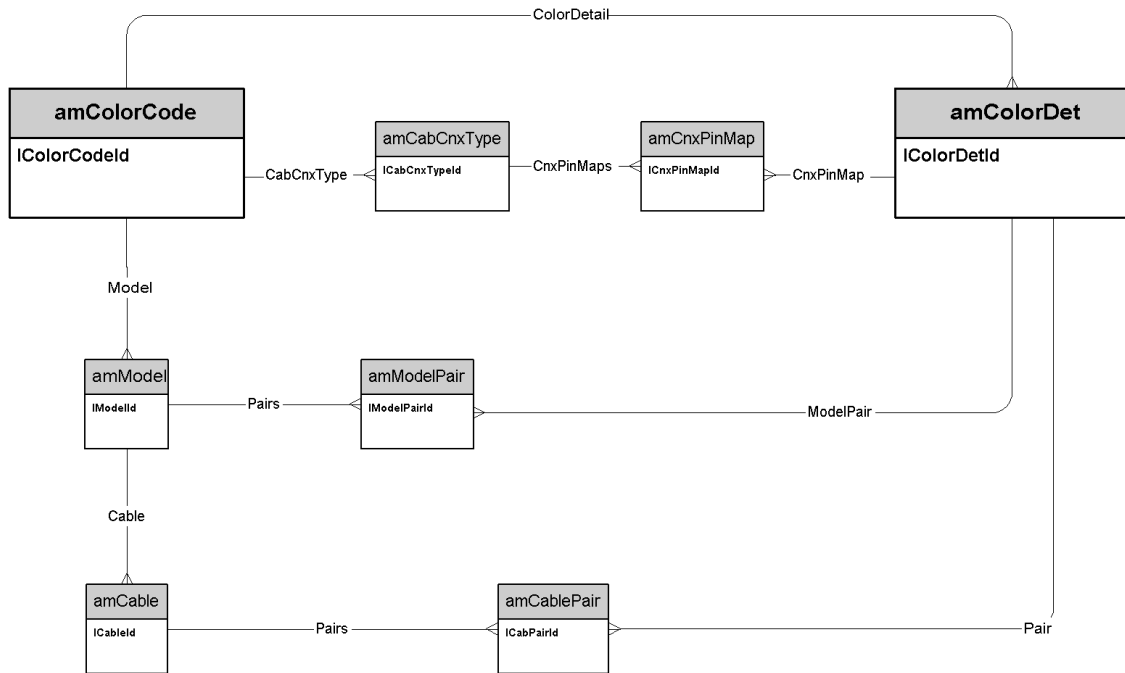
This chapter presents diagrams of the following physical data models:

- Cables and cable devices 36
- Color codes 37
- Label rules 38
- Pair/conductor types 39
- Cable duties 39
- Slots 40
- Topologies 41
- Topology groups 42
- Termination-field configurations 43
- Cable links 44

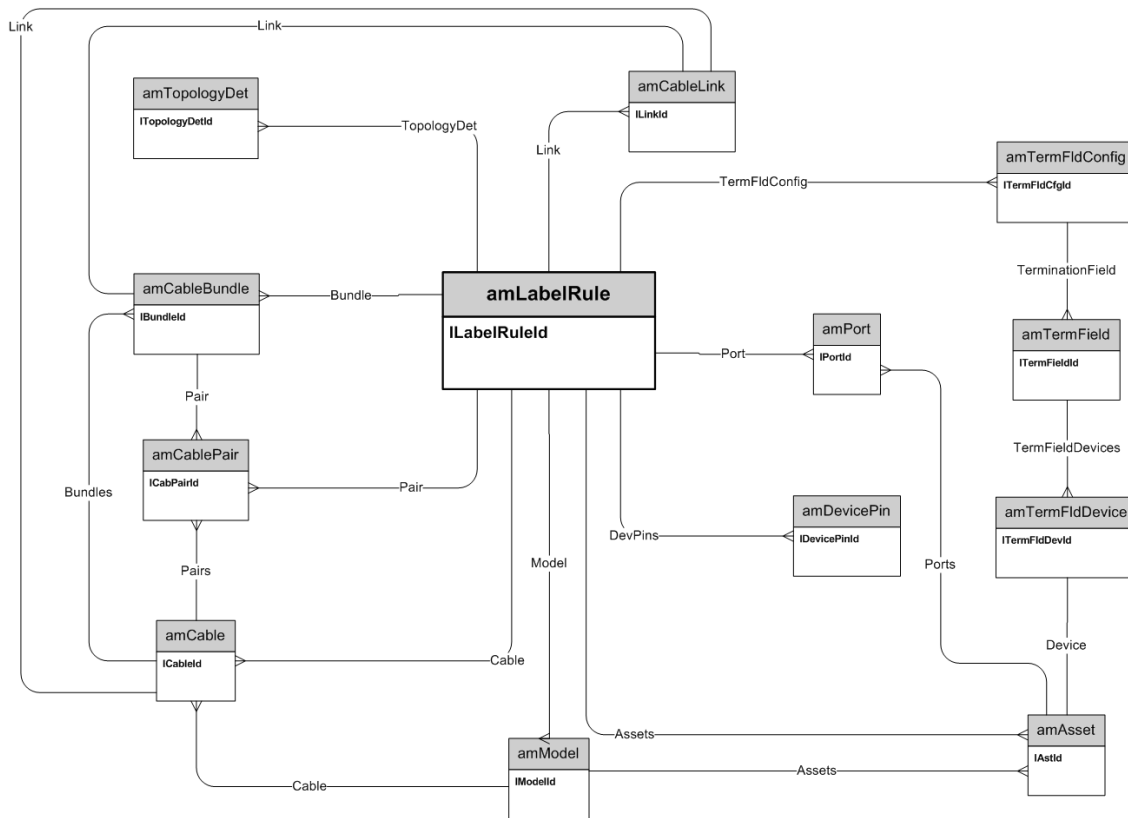
Cables and cable devices



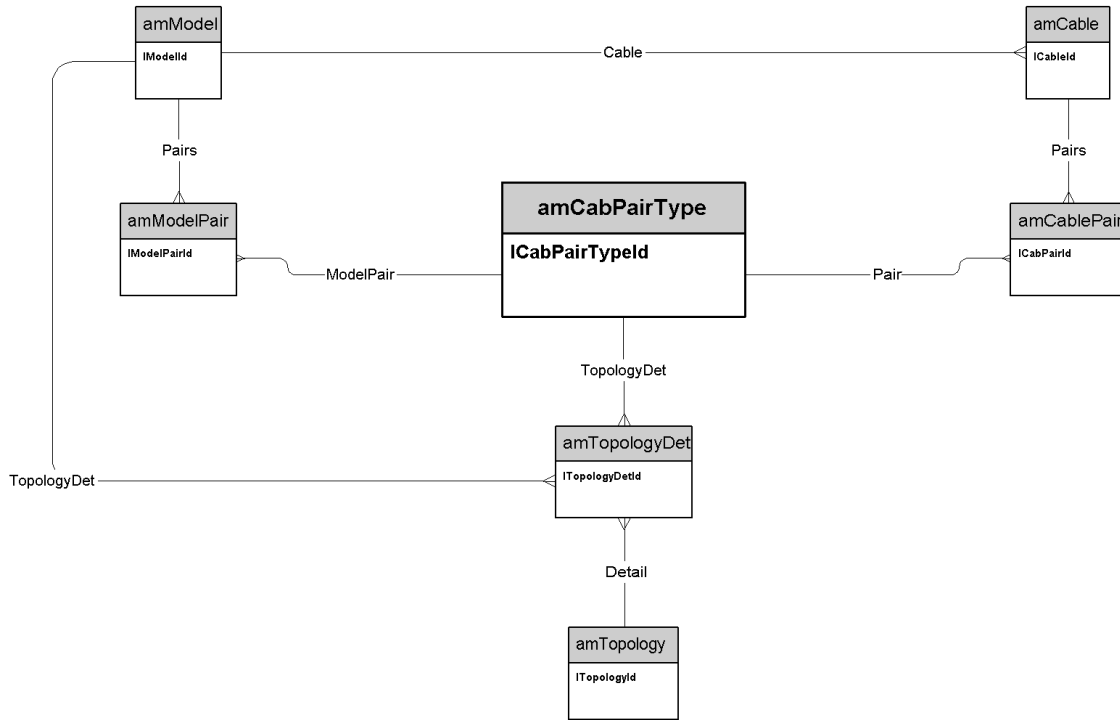
Color codes



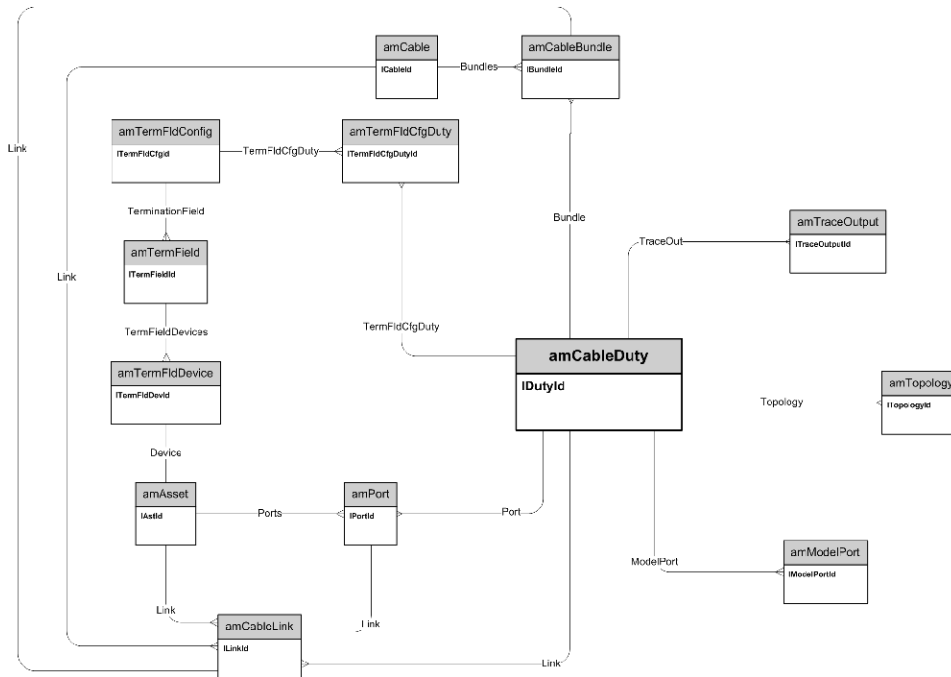
Label rules



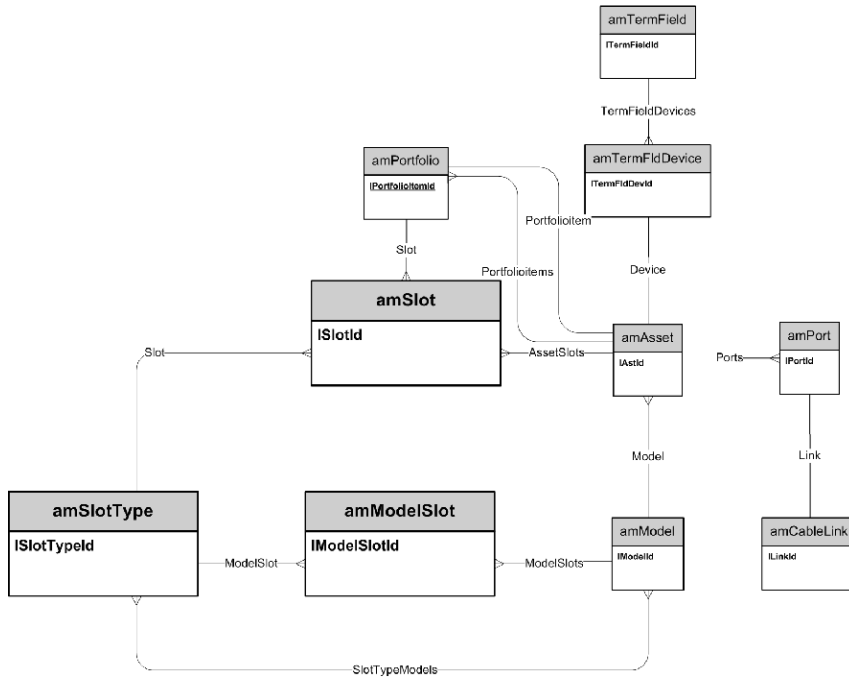
Pair/conductor types



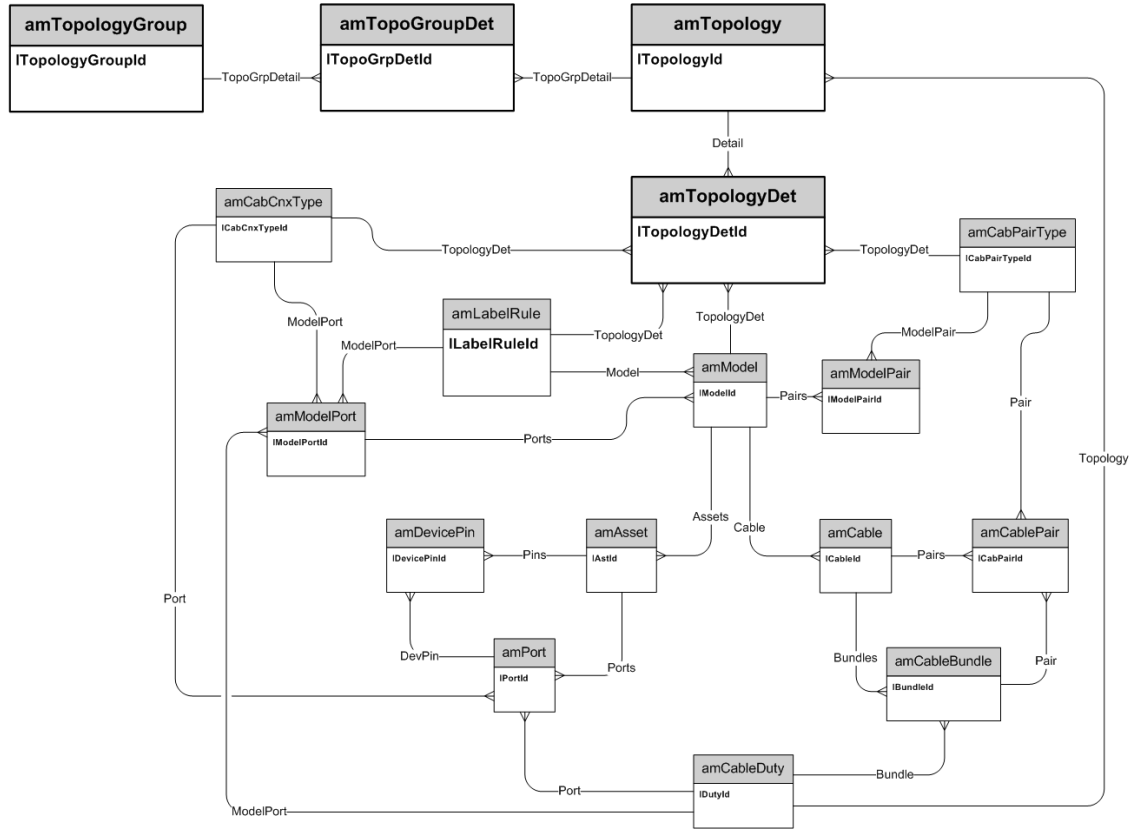
Cable duties



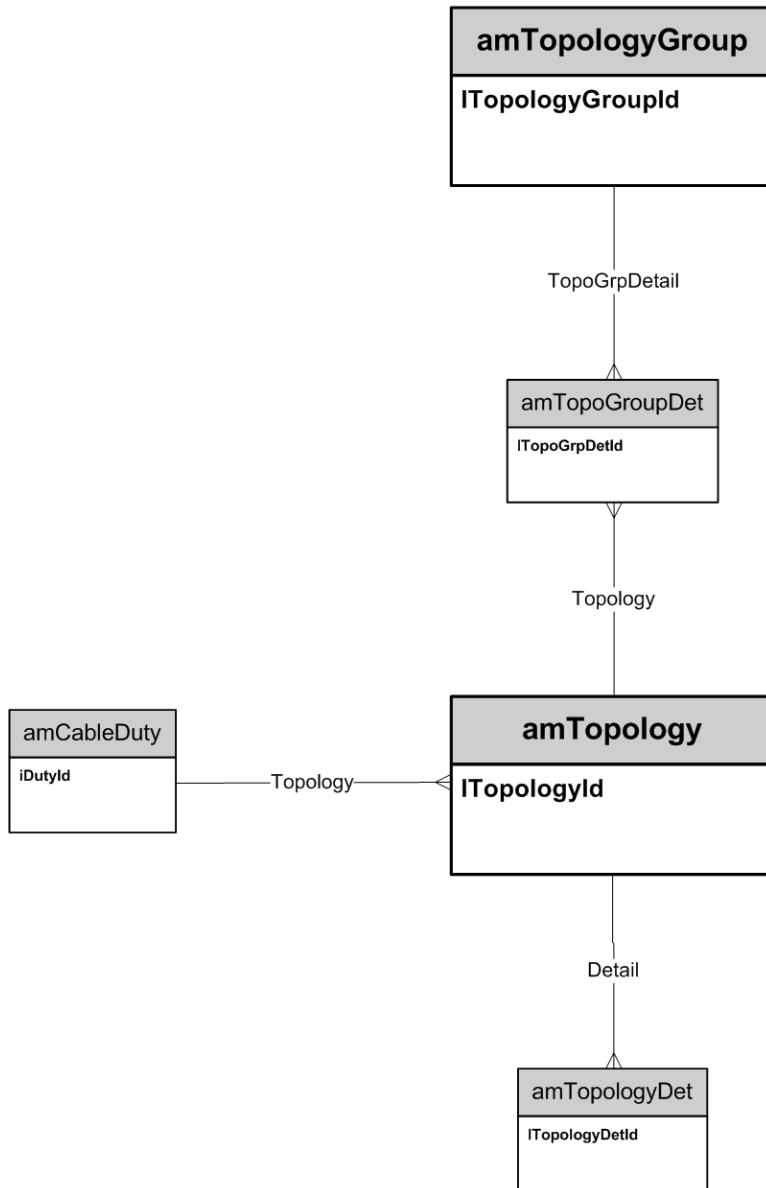
Slots



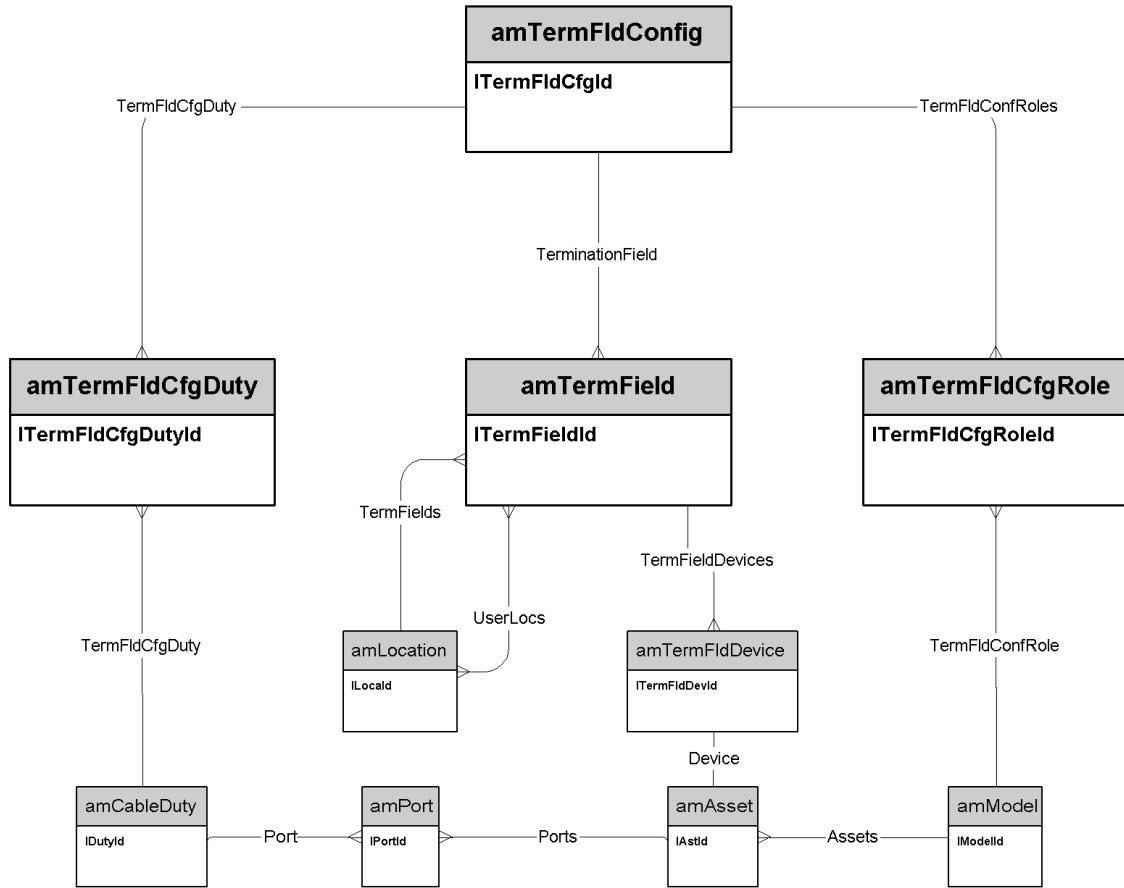
Topologies



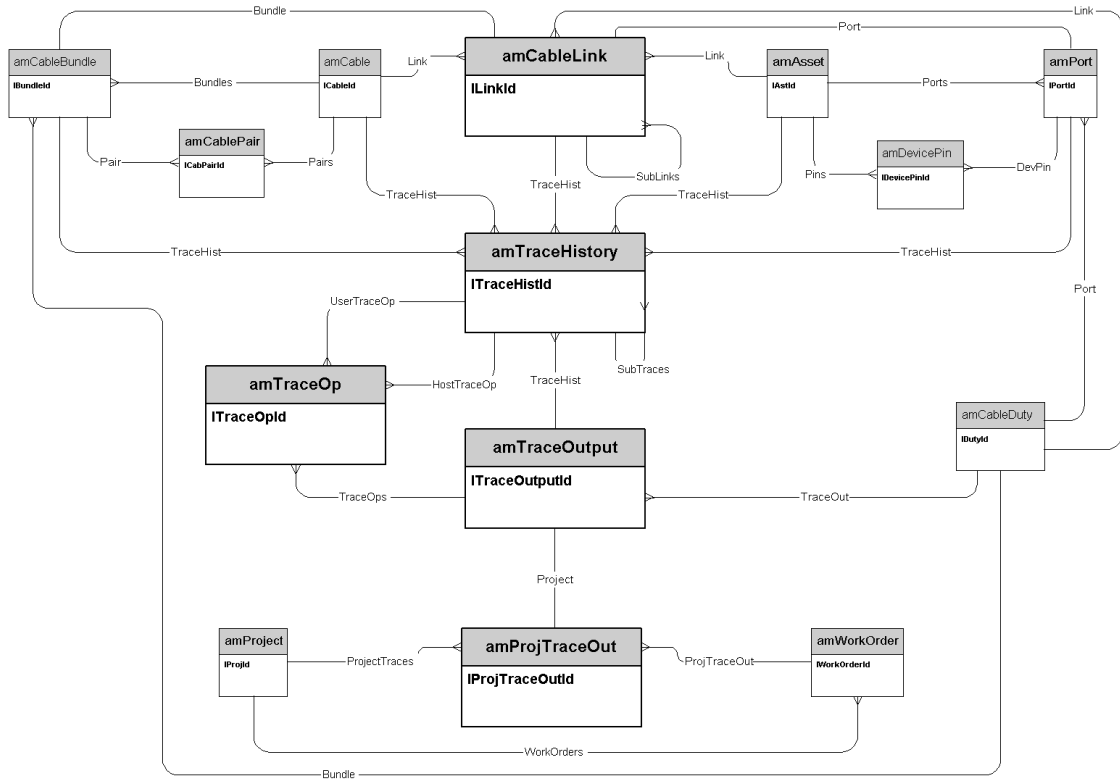
Topology groups



Termination-field configurations



Cable links

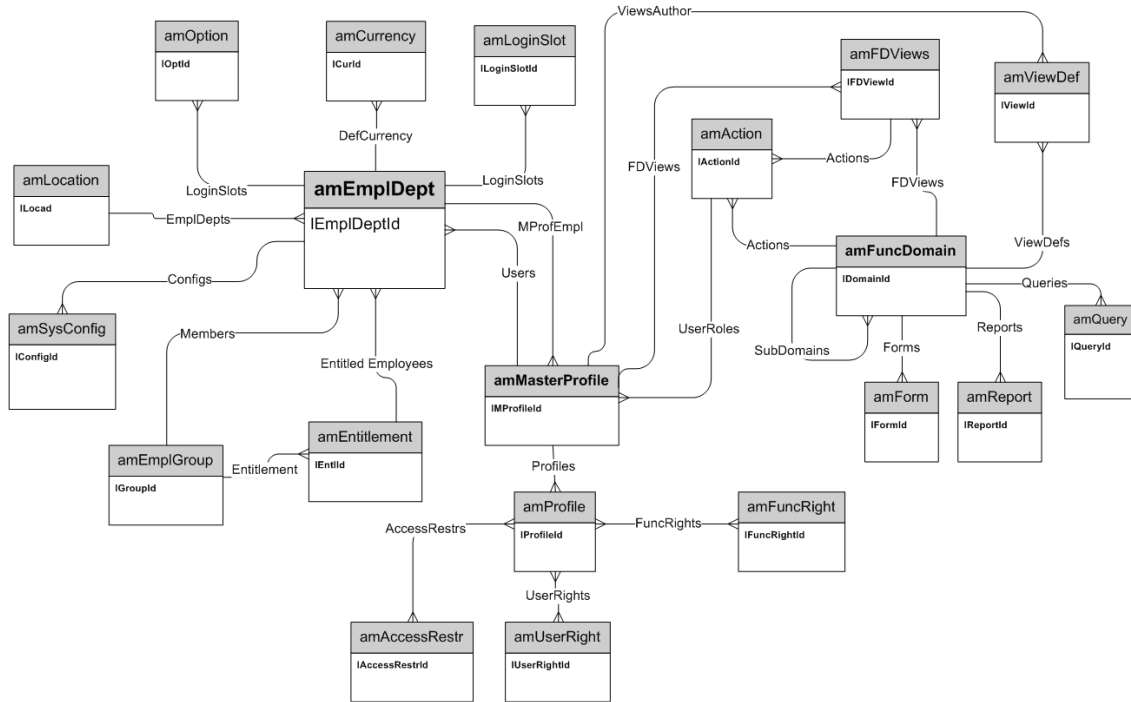


Chapter 8: Administration

This chapter presents the diagram of the following physical data models:

Access to the database	46
Workflows	47

Access to the database

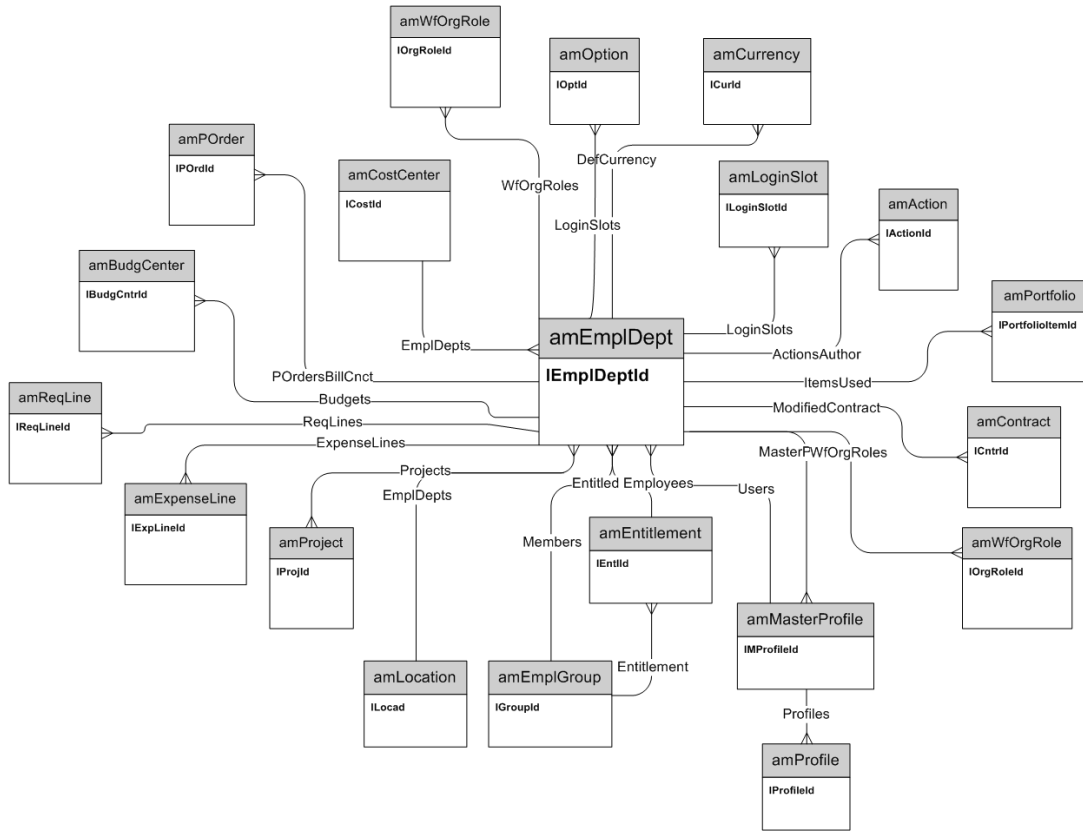


Chapter 9: Organization

This chapter presents the diagram of the following physical data model:

Employees and Departments	49
---------------------------------	----

Employees and Departments

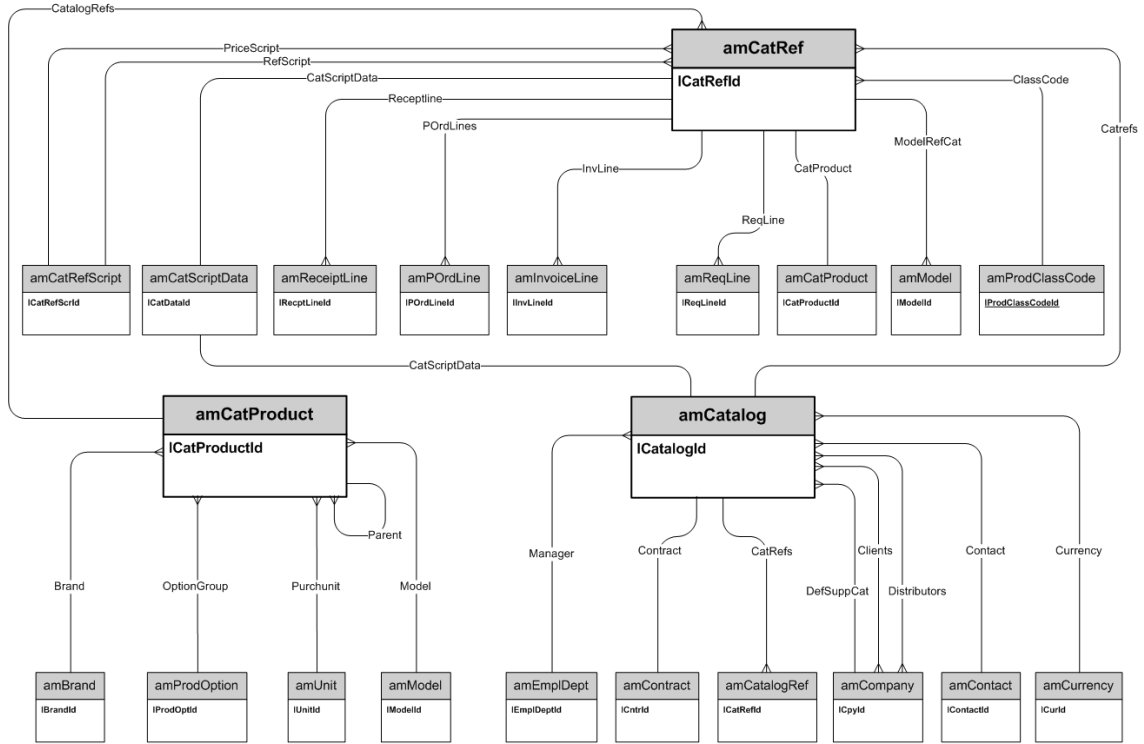


Chapter 10: Catalog

This chapter presents the diagram of the following physical data model:

Catalog	51
---------------	----

Catalog



We appreciate your feedback!

If you have comments about this document, you can [contact the documentation team](#) by email. If an email client is configured on this system, click the link above and an email window opens with the following information in the subject line:

Feedback on Physical Data Models (Asset Manager 9.41)

Just add your feedback to the email and click send.

If no email client is available, copy the information above to a new message in a web mail client, and send your feedback to ovdoc-ITSM@hp.com.