

HP Service Virtualization

Software Version: 3.50

Installation Guide

Document Release Date: March 2014

Software Release Date: March 2014



Legal Notices

Warranty

The only warranties for HP products and services are set forth in the express warranty statements accompanying such products and services. Nothing herein should be construed as constituting an additional warranty. HP shall not be liable for technical or editorial errors or omissions contained herein.

The information contained herein is subject to change without notice.

Restricted Rights Legend

Confidential computer software. Valid license from HP required for possession, use or copying. Consistent with FAR 12.211 and 12.212, Commercial Computer Software, Computer Software Documentation, and Technical Data for Commercial Items are licensed to the U.S. Government under vendor's standard commercial license.

Copyright Notice

© Copyright 2011-2014 Hewlett-Packard Development Company, L.P.

Trademark Notices

Adobe™ is a trademark of Adobe Systems Incorporated.

Internet Explorer®, SQL Server®, Microsoft®, Windows®, Windows Server®, Windows® XP, and Windows® 7 are U.S. registered trademarks of Microsoft Corporation.

Oracle, Java, and JDBC are registered trademarks of Oracle and/or its affiliates.

IBM®, WebSphere®, IMS™, and CICS® are trademarks or registered trademarks of International Business Machines Corporation, IBM, in the United States and in other countries.

TIBCO® is either the registered trademark or the trademark of TIBCO Software, Inc. and/or its subsidiaries in the United States and /or other countries.

Intel®, Core™2, and Xeon® are trademarks of Intel Corporation in the U.S. and/or other countries.

SAP® and SAP NetWeaver® are registered trademarks of SAP AG in Germany and in several other countries.

Shunra and Shunra NV™ are trademarks of Shunra.

Documentation Updates

The title page of this document contains the following identifying information:

- Software Version number, which indicates the software version.
- Document Release Date, which changes each time the document is updated.
- Software Release Date, which indicates the release date of this version of the software.

To check for recent updates or to verify that you are using the most recent edition of a document, go to: <http://h20230.www2.hp.com/selfsolve/manuals>

This site requires that you register for an HP Passport and sign in. To register for an HP Passport ID, go to: <http://h20229.www2.hp.com/passport-registration.html>

Or click the **New users - please register** link on the HP Passport login page.

You will also receive updated or new editions if you subscribe to the appropriate product support service. Contact your HP sales representative for details.

Support

Visit the HP Software Support Online web site at: <http://www.hp.com/go/hpsoftwaresupport>

This web site provides contact information and details about the products, services, and support that HP Software offers.

HP Software online support provides customer self-solve capabilities. It provides a fast and efficient way to access interactive technical support tools needed to manage your business. As a valued support customer, you can benefit by using the support web site to:

- Search for knowledge documents of interest
- Submit and track support cases and enhancement requests
- Download software patches
- Manage support contracts
- Look up HP support contacts
- Review information about available services
- Enter into discussions with other software customers
- Research and register for software training

Most of the support areas require that you register as an HP Passport user and sign in. Many also require a support contract. To register for an HP Passport ID, go to:

<http://h20229.www2.hp.com/passport-registration.html>

To find more information about access levels, go to:

http://h20230.www2.hp.com/new_access_levels.jsp

HP Software Solutions Now accesses the HPSW Solution and Integration Portal Web site. This site enables you to explore HP Product Solutions to meet your business needs, includes a full list of Integrations between HP Products, as well as a listing of ITIL Processes. The URL for this Web site is <http://h20230.www2.hp.com/sc/solutions/index.jsp>

Service Virtualization Overview

HP Service Virtualization provides a framework for creating virtual services for use in testing your applications under development.

You can create virtual services to simulate the behavior of services with limited access, such as unavailable or expensive services. Service Virtualization places a virtual service between the client application (application under test) and the real service to which you require access. Once you create virtual services to simulate the real services that you require, you reconfigure your client applications to use the virtual services, instead of the real services.

Service Virtualization Components

Service Virtualization consists of the following applications:

- **Designer.** A client application enabling you to create virtual services, and run simulations of real service behavior. The Service Virtualization Designer The Designer is used for design and validation of virtual services within the same desktop environment, and includes an embedded server for hosting virtual services.
- **Server.** *(Optional.)* A standalone server application which hosts the running of virtual services. The Service Virtualization Server is optimized for performance, can contain many more services than the Designer, and can be accessed by multiple Designers.

For details on configuring the Service Virtualization Server, see "[HP Service Virtualization Server](#)" on page 40.

- **Management Interface.** *(Optional.)* A web application enabling you to view and manage all services from Service Virtualization configured servers, without opening the Designer or individual projects. The Service Virtualization Management is installed by default when you install the Service Virtualization Server.

Note:

- You can choose to install the Designer alone, or both the Designer and the standalone Server. These applications can be installed together on a single machine or separately as a distributed application.
- Service Virtualization Management is installed by default when you install the Service Virtualization Server.

Installation and Configuration Overview

This guide includes the following information to guide you through installation, as well as additional server configuration information:

Name	Description
"System Requirements" on page 6	Supported hardware and software systems.
"Installation" on page 13	Step-by-step instructions to install and configure Service Virtualization.
"Command Line Installation" on page 18	Instructions for installing the Service Virtualization components from the command line.
"Upgrade and Migration" on page 23	Overview of the process for upgrading to a new version of Service Virtualization.
"Virtual Service Deployment" on page 29	Deploying services on the Service Virtualization Server.
"HTTP Port Configuration" on page 34	Information on manually configuring the HTTP ports that Service Virtualization uses.
"HP Service Virtualization Server" on page 40	Additional configuration information for the Service Virtualization Server.
"How to Start Service Virtualization" on page 54	Instructions on starting the Service Virtualization components: Designer, Server, and Service Virtualization Management.

Chapter 1: System Requirements

This chapter provides an overview of the hardware and software requirements for installing Service Virtualization.

This chapter includes:

Hardware Requirements	7
Software Requirements	9

Hardware Requirements

This section includes:

- ["Minimal Hardware Configuration" below](#)
- ["Recommended Hardware Configuration" below](#)

Minimal Hardware Configuration

The HP Service Virtualization Server 3.50 and HP Service Virtualization Designer 3.50 can run on any hardware configuration that is using a supported operating system and has at least 1GB of physical memory installed and available for each product.

With the minimal hardware configuration, you can perform all functional testing scenarios and some basic performance testing scenarios, provided that they do not create too much load on virtualized services.

Recommended Hardware Configuration

Virtualization hardware sizing is complicated and may include many factors. For detailed sizing recommendations, contact HP Customer Support. For contact information, see ["Support" on page 2](#).

The following hardware configurations provide a good performance balance for normal usage scenarios, where each product is installed on a separate machine.

HP Service Virtualization Designer 3.50

- Intel® Core™2 Duo T7500 @ 2.2GHz or similar
- 4GB physical memory
- Free physical disk storage space

The Designer typically uses less than 1GB of space for installation and all Service Virtualization projects, as follows:

- 250 MB for the Designer installation
- 10 MB for each service, where this figure can grow as recorded traffic increases

Use the following calculation to calculate your required size:

$$15 * \text{MSG_SIZE} * \text{MSG_COUNT}$$

where:

MSG_SIZE = learned message size in kilobytes

MSG_COUNT = the number of unique messages learned during the learning process

HP Service Virtualization Server 3.50 (32-bit edition)

- Intel® Xeon® 5140 @ 2.33GHz or similar
- 4GB physical memory
- Free physical disk storage space:
 - 250 MB for the Server installation.
 - The Server does not maintain any data on the local disk. Data are loaded from and saved to the Database Server.

HP Service Virtualization Server 3.50 (64-bit edition)

- Intel® Xeon® 5140 @ 2.33GHz or similar
- 8GB physical memory
- Free physical disk storage space:
 - 250 MB for the Server installation.
 - The Server does not maintain any data on the local disk. Data are loaded from and saved to the Database Server.

Database Server

- Intel® Xeon® 5140 @ 2.33GHz or similar
- 8GB physical memory
- Database storage:

The database typically requires 1GB of disk space, but this figure can grow as recorded traffic increases.

Use the following calculation to calculate your required size:

$30 * \text{MSG_SIZE} * \text{MSG_COUNT}$

where:

MSG_SIZE = learned message size in kilobytes

MSG_COUNT = the number of unique messages learned during the learning process

Software Requirements

- Before installing this product, it is recommended to contact HP Customer Support to check for any available software updates. For contact information, see ["Support" on page 2](#).
- For the full list of supported environments, refer to the support matrix on the HP Software Support site at: http://h20230.www2.hp.com/sc/support_matrices.jsp, or contact support.

This section includes:

- ["Supported Operating Systems" below](#)
- ["Database Server" on the next page](#)
- ["Access Rights" on the next page](#)
- ["Additional Software Prerequisites" on page 11](#)

The following environments are supported for Service Virtualization 3.50:

Supported Operating Systems

- Microsoft® Windows® XP Professional (Service Pack 3 or higher)
- Microsoft® Windows® 7 (32-bit and 64-bit)
- Microsoft® Windows® 8 (64-bit)
- Microsoft® Windows Server® 2003 R2 32-bit (Standard/Enterprise Editions)
- Microsoft® Windows Server® 2008 (32-bit and 64-bit)
- Microsoft® Windows Server® 2008 R2 (64-bit)
- Microsoft® Windows Server® 2012 64-bit

Database Server

Note: If you do not have a supported database server installed, you can install the Microsoft SQL Server Express included with the Service Virtualization installation package. In the installation root folder, run **autorun.exe**.

- Microsoft® SQL Server® 2008 R2
- Microsoft® SQL Server® 2008 R2 Express
- Microsoft® SQL Server® 2012
- Microsoft® SQL Server® 2012 Express
- Oracle Database 11g

Prerequisite: The appropriate version of Oracle Data Access Components (ODAC) for your system must be installed.

- For the Service Virtualization Designer and 32-bit Service Virtualization Server, install the 32-bit ODAC version.
- For the 64-bit Service Virtualization Server, install the 64-bit ODAC version.

If you are installing the Designer and Server on the same machine, you must install both the 32-bit and 64-bit versions of ODAC. Install each version in a separate folder.

Access Rights

The following permissions are required:

Installation	<ul style="list-style-type: none">• Windows administrator rights.• For an MS-SQL database, the following MS-SQL account Server Roles:<ul style="list-style-type: none">■ dbcreator■ public
---------------------	---

To run the Service Virtualization Server	<ul style="list-style-type: none">• Windows administrator rights on the Server machine.• For an MS-SQL database, the following MS-SQL User Mapping user privileges to access the database:<ul style="list-style-type: none">▪ db_owner▪ public
To run the Service Virtualization Designer	<ul style="list-style-type: none">• For an MS-SQL database, the following MS-SQL User Mapping user privileges to access the database:<ul style="list-style-type: none">▪ db_owner▪ public• To configure the Service Virtualization HTTP/S agent, Windows administrator rights are required on the Designer machine.

Additional Software Prerequisites

The following prerequisite software is required for Service Virtualization. These applications are included in the Service Virtualization installation package. When you run the installation, you are prompted to allow Service Virtualization to install all required prerequisites that are not yet installed. You can choose to install, or exit the installation.

Service Virtualization Designer:

- Windows Installer 4.5
- Microsoft Visual C++ 2005 x86 Redistributable (*for Windows XP/Windows Server 2008 and earlier versions*)
- Microsoft Visual C++ 2008 SP1 x86 Redistributable
- Microsoft Visual C++ 2010 x86 Redistributable
- Microsoft Visual C++ 2012 x86 Redistributable
- Windows Imaging Component
- .NET Framework 4.0 (*if 4.5 is not installed*)
- Microsoft Access Database Engine 2010 Redistributable
- Update for .NET Framework 4 (KB2468871)
- Windows Server 2003 Service Pack 2 32-bit Support Tools (*for Windows Server 2003 or XP*)

- Microsoft Windows Server 2003 Service Pack 1 Administration Tools Pack (*for Windows Server 2003 or XP*)

Service Virtualization Server:

- Windows Installer 4.5
- Microsoft Visual C++ 2005 x86 Redistributable (*for Windows XP/Windows Server 2008 and earlier versions*)
- Microsoft Visual C++ 2005 x64 Redistributable (*for Windows XP/Windows Server 2008 and earlier versions*)
- Microsoft Visual C++ 2008 SP1 x86 Redistributable
- Microsoft Visual C++ 2010 x86 Redistributable
- Microsoft Visual C++ 2010 x64 Redistributable
- Microsoft Visual C++ 2012 x86 Redistributable
- Microsoft Visual C++ 2012 x64 Redistributable
- Windows Imaging Component
- .NET Framework 4.5 (*for Windows Server 2008, Vista, and later*)
- .NET Framework 4.0 (*for Windows Server 2003 or XP, if 4.5 is not installed*)
- Update for .NET Framework 4 (KB2468871) (*for Windows Server 2003 or XP*)
- Windows Server 2003 Service Pack 2 32-bit Support Tools (*for Windows Server 2003 or XP*)
- Microsoft Windows Server 2003 Service Pack 1 Administration Tools Pack (*for Windows Server 2003 or XP*)
- IIS 7.5 Express (*for Windows Server 2008, Vista, and later, if IIS 8.0 is not installed*)

Chapter 2: Installation

This section explains how to install Service Virtualization using the installation wizard.

For command line installation, see "[Command Line Installation](#)" on page 18.

To install Service Virtualization:

1. Make sure to review the prerequisites for installation. For details, see "[System Requirements](#)" on page 6.

Note: If you do not have a supported database server installed, you can install the Microsoft SQL Server Express during installation. It is included in the Service Virtualization installation package.

2. Insert the HP installation DVD into your drive, or navigate to the installation folder and run **autorun.exe**. The Welcome screen displays the following options:
 - HP Service Virtualization Server 3.50
 - HP Service Virtualization Designer 3.50
 - HP Autopass License Server
 - Microsoft® SQL Server® 2008 R2 Express

Note:

Service Virtualization Server:

- A valid product license is required to start the application. The installation wizard installs a 30-day trial license. After successful server installation, see "[Server License Installation](#)" on page 41 for the additional steps required for license installation.

Autopass:

- For details, refer to the HP Autopass License Server documentation, included with the Service Virtualization installation files.
- For details on working with the Autopass License Server in Service Virtualization, see the *HP Service Virtualization User Guide*.

SQL Server:

- Installation of Microsoft® SQL Server® 2008 R2 Express is required only if no other supported database is available for the HP Service Virtualization installation.

- SQL Server must be installed by an admin user, or by a user with the following user rights:
 - Backup files and directories
 - Debug Programs
 - Manage auditing and security log

Details can be found at <http://support.microsoft.com/kb/2000257>.

- To run the installation, you must have Administrator access rights.

3. Select an option to start the installation.

You will be prompted to install all required prerequisites that are not yet installed.

Follow the installation wizard instructions to install the product. For details on installation wizard options, see below.

Note: The Server and Designer installation processes generate log files, which are saved in the following locations:

- **Server:** %ALLUSERSPROFILE%\Hewlett-Packard\HP Service Virtualization Server\logs\HPServiceVirtualizationServer-x64.installation.log
- **Designer:** %APPDATA%\Hewlett-Packard\VirtualServiceDesigner\logs\HPServiceVirtualizationDesigner.installation.log

Installation Wizard Options

The following section describes the options available during installation of the **Service Virtualization Designer** and the **Service Virtualization Server**:

- **Installation destination folder.** On the Custom Setup page, you can change the installation destination folder using the **Browse** button.
- **Database configuration parameters.** On the Database Setup page, fill in values for the following parameters. If the database does not exist, the installation wizard creates it with the name you specify.

Caution:

- Each HP Service Virtualization component (Designer and Server) requires a dedicated tablespace – the database defined by name in MS SQL, and by user account in Oracle. Each Service Virtualization component can drop all data in its tablespace during its initialization. Sharing of the same tablespace with other applications or use of the system account in an Oracle database can lead to invalid behavior or data loss.
- The HP Service Virtualization Designer requires a separate database for each user. The database is mainly used by the embedded server running inside the Designer, and also for caching recent projects.

Name	Description
Database Type	Select MS SQL Server or Oracle database.
Data Source	<p>The data source part of the connection string.</p> <p>Basic syntax:</p> <p>MSSQL: server\instance,port</p> <p>Oracle: server/SID:port</p> <p>Default: localhost\SQLEXPRESS_SV</p> <p>If you are working with the full SQL Server version, you can exclude the instance name to use the default instance.</p> <p>If you are working with SQL Server Express, you must specify the exact database instance name.</p>
Properties	<p>Optional: Additional database connection properties. The properties you specify are appended to the connection string after the server and instance parameters.</p> <p>For example:</p> <ul style="list-style-type: none"> ■ Use <code>Encrypt='true'</code> to use an SSL connection to the database server. ■ Use <code>Proxy User Id=pUserId;Proxy Password=pPassword</code> to specify proxy authentication for connection to an Oracle server.
Name	<p>The database name.</p> <p>For MS SQL Server only.</p>

Name	Description
Create	<p>Creates the database during product installation and removes the database when the product is uninstalled.</p> <p>Clear the Create checkbox to use the existing database.</p> <p>For MS SQL Server only.</p> <div style="background-color: #e0e0e0; padding: 10px; margin-top: 10px;"> <p>Note: In order to install the product successfully, the database user must have the proper privileges. If you select the option to create the database automatically during installation, the database user must have sufficient privileges to create the database – the SQL server roles <code>dbcreator</code> and <code>public</code>, and the database role <code>db_owner</code>. If you are using an existing database, the database user must have sufficient privileges to create the database schema – the SQL server role <code>public</code> and the database role <code>db_owner</code>.</p> </div>
Authentication	The database server authentication type.
User	The database server authentication user. For SQL authentication only.
Password	The database server authentication password. For SQL authentication only.
Test Connection	Tests the database connection.
Connection String	View or modify the complete database connection string.

- **Additional installation options:**

Name	Description
Performance Monitor Remote Access	To create a new user with privileges to remotely read the performance monitor, select Create performance monitor user . This account can be used for remote access to the application's performance monitor counters. For details on the Service Virtualization performance counters, see the <i>HP Service Virtualization User Guide</i> .
Server Encryption	<p>Enable server configuration encryption. Encrypts all passwords, certificates, and other sensitive configuration data stored in the embedded or standalone Service Virtualization Server, using a user-defined password.</p> <p>For more details on encryption, see "Password Encryption" on page 48.</p>

Name	Description
<p>The following options are available when installing the Service Virtualization Server only:</p>	
<p>Management Endpoint</p>	<p>Enable authentication for Server management endpoint:</p> <ul style="list-style-type: none"> ■ Encrypts the communication between the Service Virtualization Server and clients using TLS/SSL security. ■ Requires user credentials to access the secured server. <p>HTTPS port: The port number of the management endpoint. Leave the default port number 6085, or enter another available port number between 1 and 65535.</p> <p>For more details on server authentication, see "Server Authentication" on page 43.</p> <div style="background-color: #f0f0f0; padding: 5px; margin-top: 10px;"> <p>Note: Working with a secured HP Service Virtualization Server is not supported for integrations with some older versions of HP Service Test or HP LoadRunner.</p> </div>
<p>Management Interface</p>	<p>Configures the port for the Service Virtualization Management Interface. The Management Interface uses HTTPS communication. The default port is 6086. For details on working with the Management Interface, see the <i>HP Service Virtualization User Guide</i>.</p>
<p>Server Encryption</p>	<p>Enable server configuration encryption. Encrypts all passwords, certificates, and other sensitive configuration data stored on the Server, using a user-defined password.</p>
<p>Windows Services</p>	<p>Installs the following:</p> <ul style="list-style-type: none"> ■ The Windows service that starts the Service Virtualization Server with each computer startup. You can also run the Server as a standalone console application. ■ The Windows service that starts the Service Virtualization Management interface. <p>Accept the default log on to use the local system account, or enter a different user account.</p>

Chapter 3: Command Line Installation

This section describes how to install Service Virtualization from the command line.

For wizard installation, see ["Installation" on page 13](#).

This section includes:

- ["Command line installation options" below](#)
- ["Quiet Server installation example" on page 21](#)
- ["Quiet Designer installation example" on page 22](#)

Command line installation options

The installers can be executed from the command line by running **msiexec** with the following properties:

Note:

- Command Line Installation does not verify prerequisites.
- Each property may apply to the Service Virtualization Designer, Server, or to both.
- In order to install the product successfully, the database user must have the proper privileges. If you use the `DB_CREATE` property to create the database automatically during installation, the database user must have sufficient privileges to create the database – the SQL server roles `dbcreator` and `public`, and the database role `db_owner`. If you are using an existing database, the database user must have sufficient privileges to create the database schema – the SQL server role `public` and the database role `db_owner`.

Property	Installer	Description	Defined in UI
DB_TYPE	Both	Database type selection. Values: mssql/oracle Default: mssql	YES
DB_DATASOURCE	Both	The data source part of the connection string. Basic syntax: MSSQL: server\instance,port Oracle: server/SID:port Default: localhost\SQLExpress_SV	YES

Property	Installer	Description	Defined in UI
DB_PROPERTIES	Both	<p>Additional database connection properties, such as:</p> <ul style="list-style-type: none"> • Encrypt='true' to use an SSL connection to the database server. • Proxy User Id=pUserId;Proxy Password=pPassword to specify proxy authentication for connection to an Oracle server. 	YES
DB_NAME	Both	<p>Database name.</p> <p>Default:</p> <ul style="list-style-type: none"> • Designer installation: <username>_designer • Server installation: <username>_server <p>For MS SQL Server only.</p>	YES
DB_CREATE	Both	<p>Create database.</p> <p>Set to true to create the database during product installation, and remove the database when the product is uninstalled.</p> <p>Set to false to use the existing database.</p> <p>Values: true/false</p> <p>Default: true</p> <p>For MS SQL Server only.</p>	YES
DB_AUTHENTICATION	Both	<p>Database authentication uses either Windows or database credentials.</p> <p>Values: WinAuth / SqlAuth</p> <p>Default: WinAuth</p>	YES
DB_USERNAME	Both	<p>Database user name. Used only when using database credentials mode of authentication.</p>	YES
DB_USERPASS	Both	<p>Database user password. Used only when using database credentials mode of authentication.</p>	YES

Property	Installer	Description	Defined in UI
INSTALLLOCATION	Both	<p>Installation target directory.</p> <p>Default:</p> <ul style="list-style-type: none"> • Designer: c:\Program Files\HP\HP Service Virtualization Designer (On a 64-bit Windows systems, replace "Program Files" with "Program Files (x86)") • Server (32-bit): c:\Program Files\HP\HP Service Virtualization Server (On a 64-bit Windows systems, replace "Program Files" with "Program Files (x86)") • Server (64-bit): c:\Program Files\HP\HP Service Virtualization Server 	YES
IGNORE_DB_ERROR	Both	<ul style="list-style-type: none"> • Set <i>true</i> to install product despite database errors. • Set <i>false</i> to fail installation in the event of a database error. <p>Values: true/false</p> <p>Default: false</p>	NO
CREATE_USER_ENABLE	Both	<p>Set true to create a new local user for remote Performance Monitor access.</p> <p>For details on the Service Virtualization performance counters, see the <i>HP Service Virtualization User Guide</i>.</p> <p>Values: true/false</p> <p>Default: false</p>	YES
PERFORMANCE_MONITOR_USERNAME	Server	<p>Login name of Performance Monitor user.</p> <p>For details on the performance counters, see the <i>HP Service Virtualization User Guide</i>.</p> <p>Default: SVMonitor</p>	YES
PERFORMANCE_MONITOR_USERPASS	Server	<p>Password of Performance Monitor user.</p>	YES

Property	Installer	Description	Defined in UI
CREATE_SERVER_SERVICE	Server	Create service HP Service Virtualization Server. Values: true/false Default: true	YES
MANAGEMENT_ENDPOINT_AUTH	Server	Set authentication on HP Service Virtualization Server management endpoint. Values: true/false Default: true	YES
MANAGEMENT_ENDPOINT_PORT	Server	Set port of HP Service Virtualization Server management endpoint.	YES
MANAGEMENT_INTERFACE_PORT	Server	Port number for the Service Virtualization Management Interface. Values: May be in the range 1 to 65535. Default: 6086	YES
INSTALL_DESKTOP_DESIGNER_SHORTCUT	Designer	Create desktop icon for Designer. Values: true/false Default: true	YES
CULTURE	Both	Set installation language. Values: Supported values correspond to product localization variants. Default: en	NO

Quiet Server installation example

The following is an example of a quiet Server installation with the following parameters:

- Installs 32-bit Server with SQL database authentication
- Creates Performance monitor user and Windows Service Virtualization
- Sets Management endpoint authentication.
- Logs installer output in the **installer-server-x86.log** file

```
msiexec /i HPServiceVirtualizationServer-x86.msi /I*V "installer-server-x86.log" /passive DB_
DATASOURCE=czb240 DB_PROPERTIES="Encrypt='false'" DB_
```

```
AUTHENTICATION=SqlAuth DB_USERNAME="guest" DB_USERPASS="guest"  
CREATE_USER_ENABLE="true" PERFORMANCE_MONITOR_  
USERNAME="SVMonitor" PERFORMANCE_MONITOR_USERPASS="changeit"
```

Quiet Designer installation example

The following is an example of a quiet Designer installation with the following parameters:

- Installs Designer with Windows database authentication
- Logs installer output in the **installer-designer.log** file

```
msiexec /i HPServiceVirtualizationDesigner.msi /! *V "installer-designer.log" /passive DB_  
DATASOURCE=localhost\SQLExpress_SV DB_PROPERTIES="Encrypt='false'" DB_  
AUTHENTICATION=WinAuth
```

Chapter 4: Upgrade and Migration

This chapter includes:

The Upgrade Process	24
Project Migration	25
How to Migrate Virtualization Projects	26

The Upgrade Process

If you were working with an earlier version of Service Virtualization, follow the upgrade process to install and start working with a new version.

1. **Preparation.** When you install a new version of the Service Virtualization Server, all services deployed on the server are undeployed. To assist you with the upgrade process, do the following:
 - a. Run the backup tool to backup the Service Virtualization Server state before upgrade. For details, see ["Server Backup and Restore" on page 50](#).
 - b. Record the list of other virtualization projects and their locations, such as in shared repositories in the file system or in HP ALM, so that you can redeploy them after upgrade.
2. **Installation.**
 - a. Install the new version of the Service Virtualization Server.
 - b. Install the new version of the Service Virtualization Designer on client machines.

For details, see ["Installation" on page 13](#).
3. **Restore.** Run the restore tool to restore virtual services and other configuration information to the server. For details, see ["Server Backup and Restore" on page 50](#).
4. **Migration.** Migrate projects from the previous version. Migration updates your projects and services, enabling them to work with the new version. For details, see ["Project Migration" on the next page](#).
5. **Deployment.** Redeploy services on the Service Virtualization Server. For details, see ["Virtual Service Deployment" on page 29](#).

Use-case scenario:

The following example demonstrates how you might implement the upgrade process in your organization.

1. **Server administrator:** Upgrade all Service Virtualization Servers in the department to the new version.
2. **Server administrator:** Using the Resource Manager migration tool, migrate all virtual services located in shared repositories, such as on a network file system, or in HP ALM.

Note: You cannot deploy services to the upgraded server until they are migrated.

3. **Server administrator:** Using the Resource Manager deployment tool, deploy migrated services to your Service Virtualization Servers.
4. **Designer user:** Upgrade the Service Virtualization Designer on your local machine.

Note: You cannot work with upgraded projects or services until you upgrade the Designer.

5. **Designer user:** Using the Designer or the Resource Manager tool, migrate and deploy virtual services that are stored locally on your machine.

Project Migration

When you upgrade Service Virtualization to a new version, you must also migrate your virtual services. Migration updates your projects and services, enabling them to work with the new version. You cannot use the projects until they are migrated.

There are two methods for migrating virtualization projects:

- **From the Designer.** When you open a project in the Designer after installing a new Service Virtualization version, you are prompted to allow Service Virtualization to migrate the project.

This is useful, for example, if you are going to work on a specific project in the new version of the Designer, and the project is not yet migrated. For details, see the *HP Service Virtualization User Guide*.

- **Using the Resource Manager migration tool.** After installing a new version of Service Virtualization, you can use the Resource Manager command line migration tool to migrate projects.

You can migrate projects and services stored in the file system or in HP Application Lifecycle Management (ALM). This is especially useful, for example, if you have a number of projects stored in the file system or ALM, and want to migrate them without opening each one in the Designer.

Note: Installation of the ALM client is not a prerequisite for working with the Resource Manager. The ALM client is downloaded automatically if it is required.

The Resource Manager migration tool enables you to migrate the following:

- A virtualization project (.vproj files). The .vproj file includes information on all project entities (virtual services, service descriptions, simulation models, etc.) included in the project.
- A project archive (.vproja files). A .vproja archive file is created when you export a project from within the Service Virtualization Designer.

You can also specify a folder to migrate. If you specify a folder, all relevant project entities inside the folder are migrated. For example, you may have a folder that contains multiple archived projects.

For details on using the Resource Manager migration tool, see "[How to Migrate Virtualization Projects](#)" below.

How to Migrate Virtualization Projects

You can migrate virtualization projects and archived projects located in the file system or in ALM.

Note:

- If migration fails, the entities are not modified. You can fix the problem, and run the Resource Manager migration tool again.
- To migrate projects or files stored in an ALM version-control enabled project, the ALM resources must be checked in. Resource Manager checks out the resources, and checks them back in after migration.
- The migration process generates a log file, which indicates the success or failure status of each entity. The log file is located in the Service Virtualization Server or Designer log folder, accessible from the Windows Start menu.

1. Do one of the following:

- On the Service Virtualization Server, open a command prompt. Navigate to the \bin folder under the Service Virtualization Server installation folder. By default, C:\Program Files\HP\HP Service Virtualization Server\Server\bin.
- On the Service Virtualization Designer machine, open a command prompt. Navigate to the \bin folder under the Service Virtualization Designer installation folder. By default, C:\Program Files\HP (x86)\HP Service Virtualization Designer\Designer\bin.

2. Run **ResourceManager.exe -migrate** at the command line, using the following options:

Note: If an argument contains spaces, it must be enclosed in quotation marks. For example, "Resources\My Project".

Option	Description
General Options	

Option	Description
/f [source_ path]	<p>Source path. The path to the project file (.vproj) or project archive file (.vproja).</p> <ul style="list-style-type: none"> ▪ If you specify a folder, all relevant project entities inside the folder are migrated. ▪ The files may be located in the file system or in ALM. ▪ To specify a resource stored in ALM, use the following format: Resources\ [path to file or folder] <p>For example, Resources\MyVirtualProject\VirtualProject1.vproja</p> <div style="border: 1px solid gray; padding: 5px; margin-top: 10px;"> <p>Tip: To locate and copy an ALM folder path, in the Designer, from the main menu, select File > Open Project/Solution. On the sidebar, select ALM Resources, and navigate to the desired folder. Copy the path from the Look in box.</p> </div>
ALM Connection Options	
/s [ALM_ URL]	<p>ALM URL. The URL of the ALM server on which the files are located, in the following format: <ALM server IP or hostname>:<port number>/qcbn. The path must contain /qcbn at the end.</p>
/d [ALM domain]	<p>ALM domain. The ALM domain name in which the files are located.</p>
/p [ALM project]	<p>ALM project. The ALM project name in which the files are located.</p>
/u [ALM user]	<p>ALM user. The ALM user for the ALM connection.</p>
/pw [ALM user password]	<p>ALM user password. The password for the ALM user. The password is case-sensitive.</p>
/c [Check- in comment]	<p>Check-in comment. When migration is performed in a version-control enabled ALM project, a default check-in comment is added, indicating that the resource was modified by the Service Virtualization migration tool.</p> <p>Use this option to override the default comment and enter your own comment.</p>

Example:

```
ResourceManager.exe -migrate /f Resources\MyVirtualProject /s
http://MyALMServer:8080/qcbn /d Default /p MyProject /u alex_alm /pw
```

```
alexalex11
```

This command migrates projects and services located on the ALM Server **http://MyALMServer:8080/qcbin**, in the domain **Default**, in the project **MyProject**, in the Resources module under the folder **MyVirtualProject**.

Chapter 5: Virtual Service Deployment

This chapter includes:

Virtual Service Deployment	30
How to Deploy Virtual Services	30

Virtual Service Deployment

There are several ways to deploy virtual services on the Service Virtualization Server:

Per project. In the Service Virtualization Designer, you can open a project and assign it to a Service Virtualization Server. All services in the project are deployed on the specified server. For details, see the *HP Service Virtualization User Guide*.

Per server. As a Service Virtualization Server administrator, you can use the Resource Manager to deploy virtual services.

The Resource Manager is a command line tool enabling you to deploy services in multiple projects, without the need to open each project in the Designer. You can deploy services stored in the file system, or in ALM.

Note: The Resource Manager deployment tool does not require installation of the ALM client .

The Resource Manager deployment tool can deploy services from the following file types:

- A virtualization project (.vproj files). The .vproj file includes information on all project entities (virtual services, service descriptions, simulation models, etc.) included in the project.
- A project archive (.vproja files). A .vproja archive file is created when you export a project from within the Service Virtualization Designer.

The Resource Manager can be particularly useful during the upgrade process. When you upgrade the Service Virtualization Server to a new version, all deployed services are undeployed. After the new version is installed, you need to redeploy all of the virtual services.

You run the Resource Manager from the command line on a Service Virtualization Server. You can deploy services on the same machine, or on any Service Virtualization Server located on another network machine.

Note: You can also deploy services to your server using Service Virtualization Management. For details on Service Virtualization Management, see the *HP Service Virtualization User Guide*.

For details on using the Resource Manager deployment tool, see ["How to Deploy Virtual Services" below](#).

How to Deploy Virtual Services

You can deploy virtual services located in the file system or in ALM to any Service Virtualization Server.

Note: The deployment process generates a log file, which indicates the success or failure of deployment for each entity. The log file is located in the Service Virtualization Server or

Designer log folder, accessible from the Windows Start menu.

1. Do one of the following:
 - On the Service Virtualization Server, open a command prompt. Navigate to the \bin folder under the Service Virtualization Server installation folder. By default, C:\Program Files\HP\HP Service Virtualization Server\Server\bin.
 - On the Service Virtualization Designer machine, open a command prompt. Navigate to the \bin folder under the Service Virtualization Designer installation folder. By default, C:\Program Files\HP (x86)\HP Service Virtualization Designer\Designer\bin.
2. Run **ResourceManager.exe -deploy** at the command line, using the following options:

Note: If an argument contains spaces, it must be enclosed in quotation marks. For example, "Resources\My Project".

Option	Description
Source and Destination Options	
/f [source_path]	<p>Source path. The path to the project file (.vproj) or project archive file (.vproja).</p> <ul style="list-style-type: none"> ■ If you specify a folder, all services inside the folder are deployed. ■ The files may be located in the file system or in ALM. ■ To specify a resource stored in ALM, use the following format: Resources\[path to file or folder] <p>For example, Resources\MyVirtualProject\VirtualProject1.vproja</p> <div style="border: 1px solid gray; padding: 5px; margin-top: 10px;"> <p>Tip: To locate and copy an ALM folder path, in the Designer, from the main menu, select File > Open Project/Solution. On the sidebar, select ALM Resources, and navigate to the desired folder. Copy the path from the Look in box.</p> </div>
/sa [Server URL]	<p>Server URL. Specify the Service Virtualization Server on which to deploy the services.</p> <p>By default, Service Virtualization attempts to deploy the services on the server specified in the project. Use the /sa option if you want to specify a different server on which to deploy the services.</p>

Option	Description
<code>/sau [User]</code>	User. A user account with access to the Service Virtualization Server.
<code>/sapw [Password]</code>	Password. The user password for accessing the Service Virtualization Server. The password is case-sensitive.
<code>/ppw [Project_encryption_password]</code>	Project encryption password. To deploy an encrypted project, enter the project encryption password. For more details on encryption, see "Password Encryption" on page 48 .
<code>/simulate</code>	Deploy the services and places them into simulation mode.
<code>/skip</code>	Services that are already deployed are not redeployed. Use this option, for example, if you are running the deploy tool on a folder containing some services that are already deployed.
ALM Connection Options	
<code>/s [ALM_URL]</code>	ALM URL. The URL of the ALM server, in the following format: <ALM server IP or hostname>:<port number>/qcbn. The path must contain /qcbn at the end.
<code>/d [ALM domain]</code>	ALM domain. The ALM domain name in which the files are located.
<code>/p [ALM project]</code>	ALM project. The ALM project name in which the files are located.
<code>/u [ALM user]</code>	ALM user. The ALM user for the ALM connection.
<code>/pw [ALM user password]</code>	ALM user password. The password for the ALM user. The password is case-sensitive.

Example:

```
ResourceManager.exe -deploy /f Resources\MyVirtualProject /s
http://MyALMServer:8080/qcbn /d Default /p MyProject /u alex_alm /pw
alexalex11 /sa https://demoserv:6085/management /sau alex /sapw
alexalex11
```

This command deploys services located in the ALM Server **http://MyALMServer:8080/qcbn**, in the domain **Default**, in the project **MyProject**, in the Resources module under the folder **MyVirtualProject**.

The services are deployed to the Service Virtualization Server
<https://demoserv:6085/management>.

Chapter 6: HTTP Port Configuration

Service Virtualization provides a set of tools to ease the configuration of HTTP ports that are used by the application.

These tools help the user to enable/disable HTTP ports, create a self-signed certificate, import a certificate (self-signed or custom) to the certificate store, and register certificates to HTTP port and applications.

This chapter includes:

Service Virtualization Network Ports	35
How to Configure Ports and Generate Certificates	37
How to Install a Custom Certificate	39

Service Virtualization Network Ports

HP Service Virtualization uses several HTTP/HTTPS ports for communication. To configure Service Virtualization to work correctly in a protected network environment, you must verify that all required network ports are open.

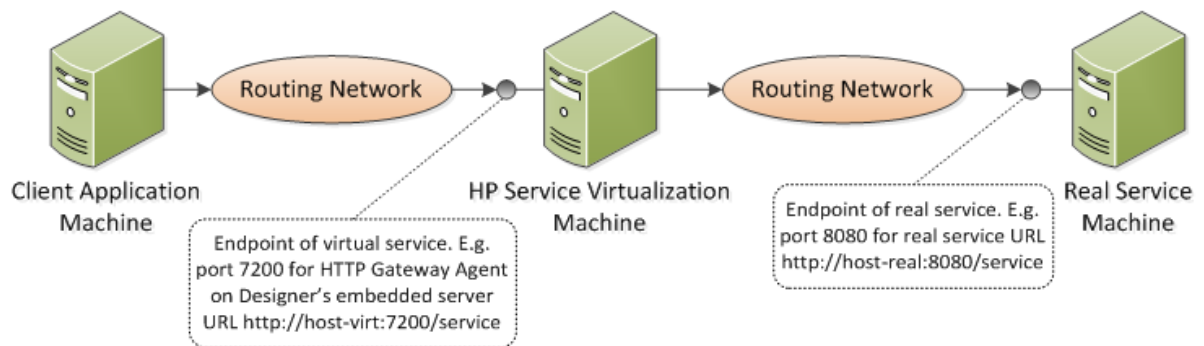
This section describes the communication paths in Service Virtualization, and the ports that are used. For details on HTTP port configuration support in Service Virtualization, see "[How to Configure Ports and Generate Certificates](#)" on page 37.

This section includes:

- "[Virtual Service Endpoint](#)" below
- "[Service Virtualization Management Endpoint](#)" on the next page
- "[Database Endpoint](#)" on the next page
- "[Service Virtualization Management Interface Endpoint](#)" on page 37

Virtual Service Endpoint

In order to record and simulate the communication between a client application and a real service endpoint, you must place Service Virtualization between them. In this scenario, communication from the client application to the virtual service, and from the virtual service to the real service is as follows:



In this figure, the client application is reconfigured to communicate with the virtual service instead of the real service. The virtual service can be deployed on one of the following:

- the Service Virtualization Designer's embedded server
- the Service Virtualization Server

The HTTP port that Service Virtualization uses depends on the Service Virtualization agent that the virtual service is using. (Service Virtualization Agents handle communication between a client and a real or virtual service.)

Service Virtualization agents use the following default HTTP ports:

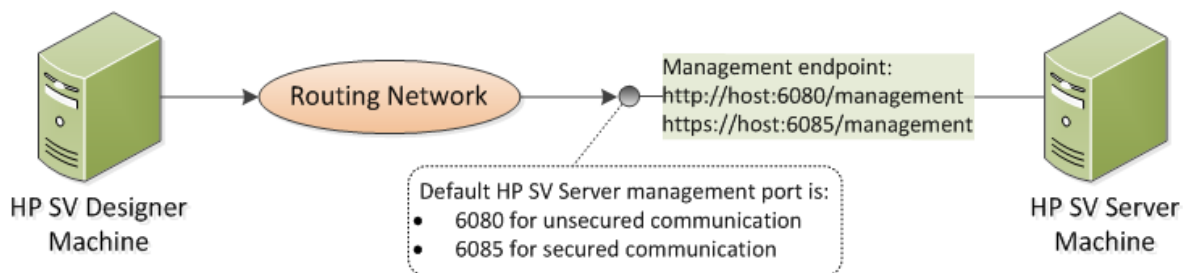
Agent	Protocol Type	Service Virtualization Designer	Service Virtualization Server
Gateway	HTTP	7200	6070
	HTTPS	7205	6075
Proxy	HTTP	7201	6071
	HTTPS	7206*	6076*
JDBC	HTTP	7288	6088

* The HTTPS Proxy Agent accesses this port directly using TCP.

The virtual service communicates with the real service's original endpoint. This is the same endpoint that the client application used before the client was reconfigured to communicate with the virtual service endpoint.

Service Virtualization Management Endpoint

The Service Virtualization Designer communicates with the Service Virtualization Server using the Service Virtualization management endpoint. This communication is required when deploying virtual services on the Service Virtualization Server. Communication between the Service Virtualization Designer and the remote Service Virtualization Server using the management endpoint is as follows:



The Service Virtualization Designer also provides a management port, used mainly for connecting to integration testing tools.

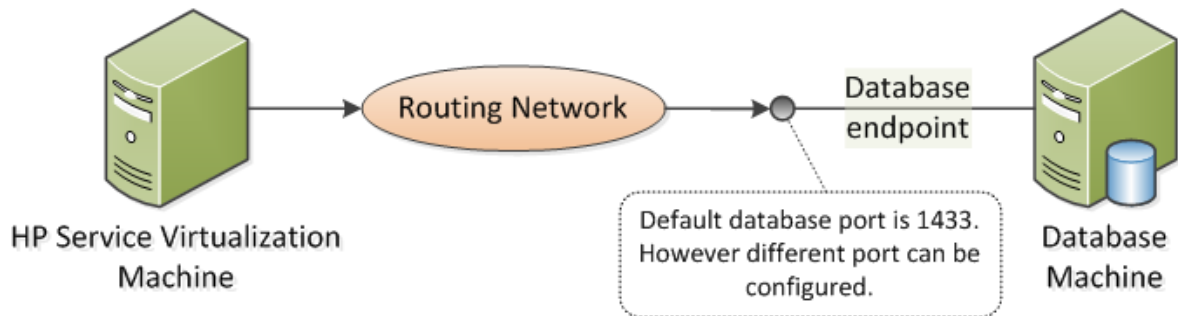
The Service Virtualization management endpoint uses the following default HTTP/HTTPS port values:

Management API	Protocol Type	Service Virtualization Designer	Service Virtualization Server
Not Secured	HTTP	7280	6080
Secured	HTTPS	-	6085

Database Endpoint

Both the Service Virtualization Designer and the Service Virtualization Server require a database for

data storage. The communication scenario between Service Virtualization and the database is as follows:



The default port of the database endpoint is **1433**. However, the database administrator can reconfigure the database to use a different port.

Service Virtualization Management Interface Endpoint

The Service Virtualization Management interface enables you to view and manage all services from Service Virtualization configured servers, without opening the Designer or individual projects.

The Management interface endpoint communicates with the Service Virtualization Server on which it is configured using the server's Management API endpoint (ports 6085 or 6080).

The default port of the Service Virtualization Management interface endpoint is **6086**.

For more details on Service Virtualization Management, see the *HP Service Virtualization User Guide*.

How to Configure Ports and Generate Certificates

To configure HTTP ports and to install a self-signed SSL certificate, use the `configureHttpAgent.bat` tool. This script is installed in the *ConfigurationTools* sub-directory in the HP Service Virtualization installation directory. This script is executed during the product installation using the default ports.

Running this script manually from the command line generates a self-signed certificate and installs it for the HP Service Virtualization application listening on the SSL Port. ACLs are added for `user=Everyone` to allow listening on the HTTP ports. The script also allows listening on default or specified HTTP ports and adds Windows Firewall exceptions for HP Service Virtualization applications and HTTP Proxy ports. The script should be run from its directory.

Syntax

```
configureHttpAgent.bat [-log] -Option [Parameter]
```

Options

Option	Description
<i>-log</i>	Logs output to a log file in the temporary directory %TEMP%\configureHttpAgent.xx.log.
<i>-es</i>	Allows/disallows HTTP ports, adds firewall exceptions, and installs the certificate used by the Service Virtualization Designer's embedded server.
<i>-ss</i>	Allows/disallows HTTP ports, adds firewall exceptions, and installs the certificate used by the Service Virtualization Server.
<i>-d</i>	Allows/disallows HTTP ports used by the Service Virtualization demo projects.
<i>-u</i>	Uninstalls.
<i>-esHttpPort [Port Number]</i>	Non-secure port number for HTTP Gateway on the Designer's embedded server. The default is 7200.
<i>-esHttpProxyPort [Port Number]</i>	Non-secure port number for HTTP Proxy on the Designer's embedded server. The default is 7201.
<i>-esHttpsPort [Port Number]</i>	SSL port number for HTTPS Gateway on the Designer's embedded server. The default is 7205.
<i>-esRestPort [Port Number]</i>	Management Service port number for the Designer's embedded server. The default is 7280.
<i>-ssHttpPort [Port Number]</i>	Non-secure port number for HTTP Gateway on the Service Virtualization Server. The default is 6070.
<i>-ssHttpProxyPort [Port Number]</i>	Non-secure port number for HTTP Proxy on the Service Virtualization Server. The default is 6071.
<i>-ssHttpsPort [Port Number]</i>	SSL port number for HTTPS Gateway on the Service Virtualization Server. The default is 6075.
<i>-ssRestPort [Port Number]</i>	Management Service port number for the Service Virtualization Server. The default is 6080.
<i>-h [Host Name]</i>	Host computer name.

Example 1

Install certificate, add firewall exceptions, and allow the default HTTP ports for both servers (the Designer's embedded server and the Service Virtualization Server) and for the Service Virtualization demos; log the output.

```
configureHttpAgent.bat -log -es -ss -d
```

Example 2

Uninstall certificate, remove firewall exceptions, and disallow all default HTTP ports.

```
configureHttpAgent.bat -u -es -ss -d
```

How to Install a Custom Certificate

Running the `addCustomCertificate.bat` script manually from the command line installs the provided custom certificate for the HP Service Virtualization application listening on the SSL Port. ACLs are added for `user=Everyone` to allow listening on the HTTP ports. The script should be run from its directory.

Syntax

```
addCustomCertificate.bat [-log] -Option [Parameter]
```

Options

-log: Log output to a log file in the temporary directory `%TEMP%\ addCustomCertificate.xx.log`.

-es: Add custom certificate on SSL port used by the Designer's embedded server.

-ss: Add custom certificate on SSL port used by the Service Virtualization Server.

-esHttpsPort [Port Number]: SSL port number for HTTPS Gateway on the Designer's embedded server. The default is 7205.

-ssHttpsPort [Port Number]: SSL port number for HTTPS Gateway on the Service Virtualization Server. The default is 6075.

-certificate [Thumbprint]: Thumbprint of the custom certificate to be used on SSL ports. The certificate must be installed in the Service Virtualization credential store. For details, see the HP Service Virtualization User Guide.

Example 1

This command adds a custom certificate on SSL port 6161 used by the Service Virtualization Server and logs the output.

```
addCustomCertificate.bat -log -ss -ssHttpsPort 6161 -certificate  
1021c70be806baebefc53b728d6bfd3dc1708eec
```

Example 2

This command adds a custom certificate on the default SSL ports used by the Service Virtualization Server and the Designer's embedded server.

```
addCustomCertificate.bat -es -ss -certificate  
1021c70be806baebefc53b728d6bfd3dc1708eec
```

Chapter 7: HP Service Virtualization Server

HP Service Virtualization Server is a standalone server application which hosts the running of virtual services. The Service Virtualization Server is optimized for performance, can contain host many more services than the Designer. The Service Virtualization Server uses its own database, separate from the Designer database. It can be accessed by multiple Designers, as well as by third-party tools.

The Service Virtualization Server is installed by the installer as a Windows service, but can also be run on demand as a console application by running the same **.exe** file associated with the Windows service.

Note: Every deployed virtual service requires 4-5 database connections.

This chapter includes:

Server License Installation	41
Service Virtualization Functionality by Edition	41
Server Authentication	43
Server Configuration	45
Changing Server Security Settings	46
Password Encryption	48
Server Backup and Restore	50

Server License Installation

The Service Virtualization Server is installed with a 30-day trial license. To continue working with the Server, you must install a license from HP.

Install the new license using the License Utility. The license must be installed on the same machine on which the Service Virtualization Server is installed.

You receive your license from the HP License Delivery Center, either in a **.dat** file or a license key. You then install the license using the License Utility. In addition, the License Utility enables you to view all installed licenses. It also displays the Host ID required for product licensing.

To install a new license:

1. To run the License Utility, from the Windows Start menu, select All Programs > HP Service Virtualization > Server > License Utility.
2. In the License Utility window, click **Install New Licenses**. The New License dialog box opens.
3. To install the license from a **.dat** license file:
 - a. Select **Install licenses using a license file**.
 - b. Click **Browse** to navigate to and select your **.dat** license file.
 - c. If your license file contains multiple licenses, click **View License File Content** to display all available licenses. Select the desired licenses.
4. To install the license as a text string:
 - a. Select **Install a license using a license key**.
 - b. Copy your License Key string and paste it into the **License Key** box.
5. In the New License dialog box, click **Install** to install the license.
6. Click **Close** to close the Install License dialog box. The new license is displayed in the License Utility window.

Service Virtualization Functionality by Edition

HP Service Virtualization is available in several editions, which determine the functionality available to you in the application.

- The **Premium Edition** provides full Service Virtualization functionality.
- The **Express Edition** provides a subset of the full Service Virtualization functionality, as described in this section.

Service Virtualization Designer Editions:

Service Virtualization Feature	Designer - Express Edition	Designer - Premium Edition
Connect to Express Edition Server	✓	✓
Connect to Premium Edition Server	✗	✓
Limited simulation throughput for the Designer's embedded server	10 transactions per second	10 transactions per second
In-memory simulation for the Designer's embedded server	✗	✗
ALM integration	✗	✓

Service Virtualization Server Editions:

Service Virtualization Feature	Server - Express Edition	Server - Premium Edition
Manage Express Edition Server	✓	✗
Manage Premium Edition Server	✗	✓
Maximum deployed services on the Service Virtualization Server	100	Full functionality
Maximum concurrent users connected to Service Virtualization Management	10	Full functionality
Maximum managed Service Virtualization Servers in Service Virtualization Management	1	Full functionality
Maximum CPU cores	8	Full functionality
Limited simulation throughput	10 transactions per second	Full functionality
In-memory simulation	✓	✓
ACL/Server access permission functionality	✗	✓
ALM integration	✗	✓

Additional information:

- The limits specified here are default settings for the editions. They may change according to your license agreement.
- Upgrading your edition: Upgrade your edition by adding the appropriate license. You can backup your server on one edition and restore it on a different edition.
- When you first install the Service Virtualization Designer or Server, a 30-day trial license is installed. This license runs the Premium Edition.

Server Authentication

To prevent unauthorized service management of the HP Service Virtualization Server, you can limit access to the server through user authentication.

The Service Virtualization Designer accesses the Service Virtualization Server using HTTP Basic Authentication, over HTTPS. The Server grants access to the Designer based on one of the following:

- A local Windows users account, located on the Server machine.
- A Windows domain account in a trusted domain, or in the same domain as the Service Virtualization Server.

To configure authentication:

- Enable authentication during Service Virtualization Server installation. For details, see ["Installation" on page 13](#).
- Enable or disable authentication at a later time. For details, see ["Changing Server Security Settings" on page 46](#).

This section also includes:

- ["Service Virtualization User Groups" below](#)
- ["Server Access Permissions" on page 45](#)

Service Virtualization User Groups

During installation of the Service Virtualization Server, built-in user groups are created on the server. These groups grant various levels of access to a Service Virtualization Server, or its resources, such as virtual services and agents, as follows:

User Group	Permissions
SV Operators	<ul style="list-style-type: none"> • View virtual services deployed on the Service Virtualization Server • Switch service simulation modes • Unlock services <p>Note: SV Operators can view only partial agent configuration information.</p>
SV Publishers	<ul style="list-style-type: none"> • View virtual services deployed on the Service Virtualization Server • Switch service simulation modes • Unlock services • Deploy, update, and undeploy services <p>Note: SV Publishers can view only partial agent configuration information.</p>
SV Runtime Administrators	<ul style="list-style-type: none"> • View, create, configure, and delete agent configurations on the Service Virtualization Server <p>Note: SV Runtime Administrators do not have permissions for viewing or managing services.</p>
SV Server Administrators	<ul style="list-style-type: none"> • Full access to Server resources • Modify Server access permissions <p>Managing access permissions:</p> <p>You can also manage group membership using the Service Virtualization Management interface.</p> <p>In addition, you can manage access permissions to individual resources on the Service Virtualization Server, such as virtual services.</p> <p>For details on Service Virtualization Management, see the <i>HP Service Virtualization User Guide</i>.</p>
SVM Users	<ul style="list-style-type: none"> • Log in to Service Virtualization Management. For details on Service Virtualization Management, see the <i>HP Service Virtualization User Guide</i>.

By default, the Windows **Everyone** group is a member of the Service Virtualization user groups.

- To limit access, remove the **Everyone** group and add only specific user accounts or other Windows domain groups to the Service Virtualization user groups.

- To provide users with full permissions, add them to multiple groups.
- A user who is not assigned to any of the groups cannot view any agent data or any services deployed on the server.

Note:

- Service Virtualization enforces access permissions only when server authentication is enabled.
- The groups are created regardless of whether the Server authentication option is selected during the Server installation. This enables you to reconfigure at a later stage. For details on changing authentication options, see ["Changing Server Security Settings" on the next page](#).
- Uninstalling or reinstalling Service Virtualization does not affect these groups. Your changes to group membership are maintained between installations.
- **Server upgrade:** If you are upgrading from a Service Virtualization Server earlier than version 3.00, all users and groups that were members of the **Service Virtualization Users** group are placed in the new Service Virtualization groups.
- Every authenticated Windows user has access to /ping and /info resources. This does not depend on Service Virtualization authentication.

Server Access Permissions

You can view access permissions to a Service Virtualization Server and its resources using the Service Virtualization Management interface.

If you are a member of the **SV Server Administrators** group, or the creator of a resource, you can also add and configure permissions for additional users and groups.

Note: You cannot delete the built-in Service Virtualization user groups from the server or from a server resource, or modify the permissions.

For more details on Service Virtualization Management, see the *HP Service Virtualization User Guide*.

Server Configuration

There are several options for configuring a Service Virtualization Server:

Configuration File

As the Service Virtualization Server is a .NET application, it can be configured by editing the standard `.config` file. The only relevant entry you should customize is the address of the management endpoint. As Windows Communication Foundation framework is exposing the management API, the address can be easily changed by editing the corresponding WCF section of

the configuration file. For example, to change the address to `http://localhost:7700/hpsv`, the corresponding entry in `.config` file should look like this:

```
<configuration>
  ...
  <system.serviceModel>
    ...
    <service name="RestManagementService">
      <host>
        <baseAddresses>
          <add baseAddress="http://localhost:7700/hpsv"/>
          <!--<add baseAddress="https://localhost:6085/management"/>-->
        </baseAddresses>
      </host>
      <endpoint binding="webHttpBinding" contract="ServerManagement.IRestClient"
        bindingConfiguration="unsecured"
        behaviorConfiguration="restDispatchBehavior"/>
    </service>
    ...
  </system.serviceModel>
  ...
</configuration>
```

Command Line Parameters

Service Virtualization Server also accepts command line parameters. Currently, the only supported command line parameter option is the ability to recreate the database used by Service Virtualization Server. This can be useful when testing the application, as it enables the user to quickly wipe the database without the need to manually remove each service from the Designer. To recreate the Service Virtualization Server database, add `recreateDatabase=true` to the command line when running the Server, as in the following example:

```
HP.SV.StandaloneServer.exe recreateDatabase=true
```

Agent Configuration

You can configure Service Virtualization Agents for a standalone Service Virtualization Server using the Designer. For details, see the Service Virtualization Agents section in the *HP Service Virtualization User Guide*.

When the server is not running, you can edit the agent configuration manually for the server. The agent configuration file is `%ProgramData%\Hewlett-Packard\HP Service Virtualization Server\Agents\configurations.xml`.

Tip: To reset the default agent configurations, delete this file.

Changing Server Security Settings

If you choose to change security settings after installing the Service Virtualization Server, you must manually edit the `HP.SV.StandaloneServer.exe.config` configuration file. The file is located in the `<HPService Virtualization Server installation directory>\Server\bin` subdirectory. By default,

the Server installation path is **C:\Program Files\HP\HP Service Virtualization Server**. In the `system.serviceModel` configuration section, you must edit the settings for the exposed REST management service.

This section includes:

- REST management service configuration for disabled authentication
- REST management service configuration for enabled authentication

REST management service configuration for disabled authentication

To disable authentication, set the following:

1. Under the **endpoint** element, set the **bindingConfiguration** attribute to **unsecured**.
2. Make sure that the **HTTP** address is not commented out, and the **HTTPS** address is commented out.
3. After reconfiguration, restart the Service Virtualization Server.
4. In order to enable the new configuration, you must redirect all of your projects to the updated URL. For details, see the section on how to change servers in the HP Service Virtualization User Guide.

```
<configuration>
  ...
  <system.serviceModel>
    ...
    <service name="RestManagementService">
      <host>
        <baseAddresses>
          <add baseAddress="http://localhost:6080/management"/>
          <!--<add baseAddress="https://localhost:6085/management"/>-->
        </baseAddresses>
      </host>
      <endpoint binding="webHttpBinding" contract="ServerManagement.IRestClient"
        bindingConfiguration="unsecured"
        behaviorConfiguration="restDispatchBehavior"/>
    </service>
    ...
  </system.serviceModel>
  ...
</configuration>
```

REST management service configuration for enabled authentication

To enable authentication, set the following:

1. Under the **endpoint** element, set the **bindingConfiguration** attribute to **secured**.
2. Make sure that the **HTTPS** address is not commented out, and the **HTTP** address is commented out.
3. After reconfiguration, restart the Service Virtualization Server.
4. In order to enable the new configuration, you must redirect all of your projects to the updated URL. For details, see the section on how to change servers in the HP Service Virtualization User Guide.

```
<configuration>
  ...
  <system.serviceModel>
    ...
    <service name="RestManagementService">
      <host>
        <baseAddresses>
          <!--<add baseAddress="http://localhost:6080/management"/>-->
          <add baseAddress="https://localhost:6085/management"/>
        </baseAddresses>
      </host>
      <endpoint binding="webHttpBinding" contract="ServerManagement.IRestClient"
        bindingConfiguration="secured"
        behaviorConfiguration="restDispatchBehavior"/>
    </service>
    ...
  </system.serviceModel>
  ...
</configuration>
```

Password Encryption

You can encrypt sensitive data stored in Service Virtualization, such as passwords stored in agent configuration files or in the Service Virtualization Credential Store.

Service Virtualization encrypts data using a password that you provide. You can enable password encryption by defining an encryption password for the following application components:

- **Service Virtualization Server encryption.** During server installation, you can select the server encryption option, and define a password to use for encryption. The password is stored for the Windows system account user, and used for all server encryption.
- **Designer/Embedded Server encryption.** During Designer installation, or if you are running the Designer for the first time, you can define a password for encrypting sensitive information stored in the server. Each Windows user running the Designer can define an encryption password, used to encrypt their own data and configuration information.
- **Project encryption.** You can define a password for encrypting virtualization projects. When you

export a virtualization project and a **.vproja** project archive file is created, the project is encrypted using the encryption password. For other users to open the exported project, you must provide them with the encryption password.

For more details on project encryption, see the *HP Service Virtualization User Guide*.

This section includes:

- ["Using Encrypted Passwords in Service Virtualization Configuration Files" below](#)
- ["Generating an Encrypted Password" below](#)
- ["Changing the Service Virtualization Server Encryption Password" on the next page](#)

Using Encrypted Passwords in Service Virtualization Configuration Files

You may want to use encrypted passwords in Service Virtualization configuration files, in place of regular text passwords. You may also want to modify existing passwords stored in the files. For example, for the REST management endpoint, the Agent configuration files, or database credentials stored in the registry.

To add or edit encrypted passwords, manually edit the configuration files as follows:

1. Generate an encrypted password using the Service Virtualization Configuration Tool. For details, see ["Generating an Encrypted Password" below](#).
2. In the file you want to configure, add the `enc-` attribute to the relevant file, as shown in the example below.
3. Replace `"xxxx"` with the encrypted password string generated by the Configuration Tool.

Example:

Unencrypted:

```
<restManagementServiceConfiguration certificatePath="..\ConfigurationTools\certificates\server-cert.p12" certificatePassword="changeit" openFirewall="true" />
```

Encrypted:

```
<restManagementServiceConfiguration certificatePath="..\ConfigurationTools\certificates\server-cert.p12" enc-certificatePassword="xxxx" openFirewall="true" />
```

Generating an Encrypted Password

You can generate an encrypted password string using the Service Virtualization Configuration Tool.

1. From the command line, navigate to the Service Virtualization Server or Designer installation directory's \bin folder, and run ConfigTool.exe.

2. Use the enc-printEncryptedValue option to generate an encryption string, as follows:

```
ConfigTool.exe enc-printEncryptedValue [server encryption password] [value]
```

where

[server encryption password] = the designer or server encryption password, defined during installation

[value] = the password you want to encrypt, such as a certificate password

An encrypted password string is generated for the password and displayed.

3. Copy the encrypted password string into the file you want to edit.

Example:

```
Run C:\Program Files (x86)\HP\HP Service Virtualization  
Server\Server\bin>ConfigTool.exe enc-printEncryptedValue 123 mySecret
```

where

123 = the designer or server encryption password, defined during installation

mySecret = the password you want to encrypt

Changing the Service Virtualization Server Encryption Password

If you want to change the Service Virtualization Server's or Designer's encryption password entered during installation, use Windows Credential Manager.

Caution: If you change the encryption password, Service Virtualization will not be able to read encrypted information that was encrypted using the previous password. To correct this, use the Configuration Tool to modify the encrypted passwords.

Server Backup and Restore

The backup and restore tool enables you to create a backup archive file of your Service Virtualization Server, and then to restore the content to any Service Virtualization Server machine. It is a command line tool installed as part of the Service Virtualization Server installation. You can run it on the Server machine only.

Tip: For enhanced security, use the backup tool's encryption option.

You might use the backup and restore tool for the following:

- **During Server upgrade.** Before you install a new version of the Service Virtualization Server, run the backup tool to backup the server state. After you install the new version, run the restore tool on the upgraded server. For more details on upgrade, see "[The Upgrade Process](#)" on page 24
- **For general backup.** Create a backup when you plan to make changes in your virtual services and may want to roll back.
- **When moving to a new server machine.** Backup the Service Virtualization Server, and restore it on the new server machine.

The following data is backed up and restored:

- Virtual services that are deployed on the server and their data.
- Virtual service mode. Services that are in Simulation or Standby modes are backed up and then restored to those same modes. Services that are in Learning mode at the time of backup are removed from the server and must be manually redeployed after the restore process is complete.
- Service Virtualization agent configurations defined on the server.
- The list of servers that are accessed and managed through the Service Virtualization Management interface.

Note: If you restore the backup to a later version of the Service Virtualization Server, the backed up content is automatically migrated to the new version. For more details on migration, see "[Project Migration](#)" on page 25.

To backup or restore the state of the Service Virtualization Server:

1. On the Service Virtualization Server machine, stop the server service. From the Windows Start menu, select **All Programs > HP Service Virtualization > Server 3.50 > Server - Stop Service**.
2. Open a command prompt and navigate to the \bin folder under the Service Virtualization Server installation folder. By default, C:\Program Files\HP\HP Service Virtualization Server\Server\bin.
3. At the command line, run **BackupandRestore.exe** using the following options:

Option	Description
/b: [archive_path]	Creates a backup file, and saves it in a location you specify. [archive_path] Specify a file system location and a name for the backup file. For example, C:\Server_backups\backup_june17 .
/r: [archive_path]	Restores the server state from the backup file you specify in [archive_path].
/q:true	Runs the backup or restore process in silent mode. No user interaction is required. Use this option when you are working with automation.
/e:true	Encrypts or decrypts the backup file. When you run backup, you are prompted to enter an encryption password. If the backup is set with encryption, you must also use this option when running the restore tool. For more details on encryption, see "Password Encryption" on page 48 .

Example:

When moving to a new server machine:

- a. On the current server machine, navigate to C:\Program Files\HP\HP Service Virtualization Server\Server\bin and run the following command to backup the server:

```
backupandrestore.exe /b:C:\Server_backups\backup_June17
```

- b. Install Service Virtualization Server on the new machine.
- c. Copy the backup file from the old machine to the same location on the new machine.
- d. On the new server machine, navigate to C:\Program Files\HP\HP Service Virtualization Server\Server\bin and run the following command to restore the server:

```
backupandrestore.exe /r:C:\Server_backups\backup_June17
```

4. After you restore a Service Virtualization Server, you may want to do the following:
 - a. Redeploy additional services stored in shared repositories, such as in the file system or in ALM. For details, see ["Virtual Service Deployment" on page 29](#).

- b. Review group memberships for Service Virtualization user groups. For details, see "[Server Authentication](#)" on page 43.

Chapter 8: How to Start Service Virtualization

This section explains how to start the Service Virtualization applications. For more details on each component, see "[Service Virtualization Overview](#)" on page 4.

Service Virtualization Designer	From the Windows Start menu, select All Programs > HP Service Virtualization > Designer 3.50 > HP Service Virtualization Designer .
Service Virtualization Server	<p>Do one of the following:</p> <ul style="list-style-type: none">• Start the Server as a Windows service: From the Windows Start menu, select All Programs > HP Service Virtualization > Server 3.50 > Server - Start Service.• Start the Server as a standalone console application: From the Windows Start menu, select All Programs > HP Service Virtualization > Server 3.50 > Service Virtualization Server <p>The Service Virtualization Server can be configured as either secured or unsecured. To prevent unauthorized access, it may be configured as secured. For additional details and configuration information on the Service Virtualization Server, see "Server Authentication" on page 43.</p> <p>For details on working with a Service Virtualization Server, see the <i>HP Service Virtualization User Guide</i>.</p>

Service Virtualization Management	<p>To start the Service Virtualization Management service:</p> <ol style="list-style-type: none">1. Prerequisite: Make sure that the Service Virtualization Server is running.2. On the Service Virtualization Server machine, from the Windows Start menu, select All Programs > HP Service Virtualization > Server 3.50 > Management Interface - Start Service. <p>To access the Service Virtualization Management interface:</p> <p>Open a browser window and enter one of the following URLs:</p> <ul style="list-style-type: none">• The Service Virtualization Management URL: <pre>https://<Service Virtualization Server IP or hostname>:<Service Virtualization Management port></pre> <p>By default, the Service Virtualization Management port is 6086.</p> <ul style="list-style-type: none">• The Service Virtualization Server URL: <pre><Service Virtualization Server IP or hostname>:<HTTP/HTTPS port number>/management</pre> <p>For more details on Service Virtualization network ports, see "Service Virtualization Network Ports" on page 35.</p>
--	--