



HP ALM 11.52 Patch 2

January 2014

HP ALM 11.52 Patch 2 is for the English-language edition of ALM.

Important for Microsoft Windows installation:

Install the patch only on top of ALM 11.52 GA (Full installation of 11.50 + SP2). For details, see the [Installation instructions](#).

This document provides the following information about HP ALM 11.52 Patch 2:

[Known Limitations](#)

[Certified Environments](#)

[Fixed Defects](#)

[System Requirements](#)

[Installation Instructions](#)

[Multi-language Support](#)

[HP Software Support](#)

[Legal Notices](#)

Known Limitations

Microsoft Windows installation

Install the patch only on top of ALM 11.52 GA (Full installation of 11.50 + SP2). For details, see the [Installation instructions](#).

QCCR1J64863 There is no verifier during project upgrade that checks component with duplicate parameters names. Workaround: <http://support.openview.hp.com/selfsolve/document/KM00461630>

QCCR1J64282 [Office 2013 certification] Unable to generate a document with Document Generator if an entity under reporting contains a file in attachments.

Workaround:

1. Find the following registry key with a value of 1024 (decimal) or 0x400 (Hex):
 - **64 bit machine.**
HKEY_LOCAL_MACHINE\SOFTWARE\Wow6432Node\Microsoft\Office\15.0\Common\COM Compatibility\{25336920-03F9-11CF-8FD0-00AA00686F13}\Compatibility Flags
 - **32 bit machine.** HKEY_LOCAL_MACHINE\SOFTWARE\Microsoft\Office\15.0\Common\COM Compatibility\{25336920-03F9-11CF-8FD0-00AA00686F13}\Compatibility Flags
2. Change the value to 0. The image can now be inserted as an object.

Certified Environments

HP ALM 11.52 Patch 2 is certified for the following servers and tools:

- ALM 11.52 Patch 2 Certified with PC 11.52 Patch 1.
- Windows Server 2012 R2 64 bit Standard Edition
- Oracle 11.2.0.4
- MS Office 2013 32 bit
- ALM 11.52 Patch 2 client is certified for Microsoft Internet Explorer 11 on Windows 8.1
 - The certification excludes BPT, UFT, and Sprinter version 11.5x:
 - UFT 11.5x/ Sprinter 11.5x currently do not support Windows 8.1
 - BPT 11.5x with UFT 11.5x currently does not support Windows 8.1
 - Server Side Execution Report is not supported
 - To paste the licence in the License tab, Compatibility mode must be used

For an overall description of certified environments see the [System Requirements](#) section below.

Enhancements

Integrations

This patch provides support for integration between HP ALM and SAP Solution Manager using the Business Process Change Analyzer (BPCA) feature of HP Enterprise Integration Module 11.52 for SAP Applications.

BPCA is an application within SAP Solution Manager that helps users execute a change impact analysis and perform risk-based test planning. Integration between HP ALM and SAP Solution Manager allows users to create and modify a test set that was based on changed test objects tracked by BPCA. For information, see the chapter about BPCA in the *HP Enterprise Integration Module for SAP Applications User Guide*.

Limitations:

1. Upgrades are possible from ALM 11 (EI 2.7). If you have an existing EI project in ALM 11.52 (before patch2), refer to QCCR1J68351 for a manual workaround
2. If you are importing a project earlier than ALM 11.52 Patch 2 using .qcp file, you should run **Verify-> Repair Project** after import.

To install and use BPCA, review the *HP Enterprise Integration Module for SAP Applications Readme*.

Fixed Defects

Lab Management

QCCR1J65292 After disabling the LAB Project, projects that were not enabled for Performance Center could not be created or activated.

QCCR1J66471 Unified Functional Testing tests could not be executed when using Lab Management.

QCCR1J63546 No emails were sent after specifying the notification rules in the Automation tab of a test set.

2111198 [Internal] Timeslot for rebooting host was kept reserved for 15 minutes after the reboot finished.

Business Process Testing

QCCR1J64932 When mailing a Business Component whose design steps were reordered, the steps in the mail did not appear according to their actual order in the Business Component.

QCCR1J63928 HTML email body was not displayed properly due to nested <HTML> tag in the Description field in ALM's mail notifications.

QCCR1J66860 When exporting iterations of Business Components whose name contained 2-byte characters to Excel, the data in Excel contained gibberish characters.

QCCR1J66332 When opening a new defect from the Business Process Testing manual runner in ALM 11.52, the legacy New Defect dialog from QC 10 was launched.

QCCR1J27783 When continuing a manual run of a Business Process Testing test from Test Lab, the green icons did not appear for steps with attachments.

Management

QCCR1J63309 In some cases, synchronization of libraries between two QC projects did not work as expected.

General

QCCR1J62739 Defects could not be properly exported to Excel when the system's Digit Grouping Symbol was something other than a comma (,).

QCCR1J62969 Special characters under charset ISO-8859-1 (including French and German characters) are not well supported by rich text fields.

QCCR1J63083 Slow response of ALM11.5 server due to deadlock of threads when a new DB connection was created, and the project cache was reloaded from the DB in a fairly specific sequence.

QCCR1J65506 Temporary tables with the prefix TTBL* were not deleted as expected.

QCCR1J68525 Mixed font size was observed in several modules of ALM.

QCCR1J67811 Float UDF was stored in a non-standard float format when used on French and German Windows clients.

Customization

QCCR1J62791 Automail jobs were not executed when creating a new Performance Center project, and when no login to the project took place.

QCCR1J63892 User defined fields of type **User List** were not displayed in the **To** area of **Customization>Automail**.

QCCR1J64479 Fields deleted from a template project did not sync correctly to the linked project.

QCCR1J64967 The **New list** button was missing in **customization > project entities** view.

QCCR1J65377 The content of a multivalue field value got truncated beyond the 255 characters limit. Now a warning message appears if the total data length exceeds the maximum field capacity.

QCCR1J66348 Columns could not be expanded in cross project customization.

QCCR1J64597 The "IGNORE_TEMPLATE_LISTS" site parameter was not available.

QCCR1J63425 The IsNull statement in a Workflow returned False for BG_TARGET_REL and BG_TARGET_CYCLE fields, even if they were empty.

Defect Module

QCCR1J64911 The screenshot utility did not take a screenshot beyond the halfway point of the screen.

Installation & Upgrade

QCCR1J67434 The HP ALM Connectivity Tool for ALM 11.52 Patch 1, available from the Add-ins page (TDConnect.exe), contained client files of ALM 11.52.

Integration

QCCR1J64965 Extensions could not be enabled from the Site Admin module when system list items were renamed from their default names.

REST API

QCCR1J66235 With Performance Center, after upgrade of a load test in a version control enabled project, the "Script is missing" error occurred when opening Design Test or the script summary.

Requirements Module

QCCR1J63094 Refresh of the Requirements module took longer than expected when "Full Coverage" was selected over a long list of requirements. Workflow now supports an option of unselecting the Full Coverage option upon refresh.

QCCR1J63557 In the Traceability Matrix, the function "Filter by linked requirements" was not applied to the direct children of the traced to requirements.

QCCR1J67957 "Object reference not set..." error message appeared when opening the Coverage tab in a Requirements detail dialog that was opened from the summary graph.

QCCR1J68401 When trying to export requirements with rich text to PDF, an error message "Could not load file or assembly item" appeared, and the ALM client closed.

Site Admin

QCCR1J65713 Some projects migrated to ALM11.52 encountered a Verifier error of "Found missed release multivalued fields in system field table".

QCCR1J67835 Projects with non-default password could not be restored.

System Requirements

This section includes recommended and supported environments for HP ALM 11.5x

Important: The supported environment information is accurate for the HP ALM 11.5x release, but there may be updates for HP ALM 11.5x patches. For the most up-to-date system requirements and supported environments information, see http://support.openview.hp.com/sc/support_matrices.jsp. This site requires HP Passport sign-in credentials. To register for an HP Passport user ID, go to: <http://h20229.www2.hp.com/passport-registration.html>.

Server-Side System Requirements

Following are the server system configurations for installing HP ALM 11.5x, HP ALM Essentials, and HP Quality Center Enterprise 11.52 on Windows, Linux, and Solaris.

Please note that these requirements do not apply if you are utilizing Managed Software Solutions for HP ALM or HP Quality Center Enterprise. In that case, the Managed Software Solutions team provides a hosted version of

HP ALM or HP Quality Center Enterprise, so the only requirements are the Client-Side System Requirements listed below.

All database servers, unless otherwise stated, have been validated on 64 bit configurations.

CPU	Windows: Quad Core AMD64 processor or equivalent x86-compatible processor Linux: Quad Core AMD64 processor or equivalent x86-compatible processor Solaris: SPARC architecture required (x86 architecture is NOT supported)
Memory (RAM)	8 GB minimum
Free disk space	8 GB minimum
Virtualization	VMWare ESX/ESXi Server 5.0 and higher. HP ALM/QC is certified to work with VMWare ESX/ESXi. Due to the rapidly evolving architectures provided by Virtualization vendors as long as the above stated vendor guarantees full compatibility of the virtualized environment to the HP ALM/QC approved system requirements for physical hardware, then HP ALM/QC will function as designed.

Operating System*	Database Servers	Web Servers**	HP ALM 11.52 Patch Level
Windows Server 2008 SP2 (32 bit or 64 bit) Windows Server 2008 R2 SP1 (64 bit)(Recommended) Sun Solaris 10 (64 bit SPARC) Linux Red Hat 6.2 (Recommended) and 6.3 Linux SUSE 11 (64 bit)	Oracle 11.2.0.3 (Recommended), or 10.2.0.5 Microsoft SQL 2008 R2 SP1 (Recommended) or SP2 Microsoft SQL 2005 (SP4)	Apache 2.2 (Recommended) IIS 7 or 7.5	GA
Microsoft Windows Server 2012 Standard 64 Bit***			Patch 1
Microsoft Windows Server 2012 R2 Standard 64 Bit***	Oracle 11.2.0.4		Patch 2

***Notes:**

- It is strongly recommended that ALM be deployed only on 64 bit systems in Windows production environments.
- Localized editions of ALM are supported only on Windows operating systems.
- Oracle Enterprise Linux versions are supported as long as they are compatible with the supported versions of Red Hat Linux.

***** Windows Server 2012 64 bit - GUI installation:**

QCCR1J62352 Unable to install ALM on Windows 2012. Cannot start configuration wizard.

Requires changes in the file run_after_finish.bat from ALM\Installation\Win64\TARGETDIR before starting the installation:

1. Copy "Win64" folder from DVD \ALM\Installation\ to target server machine.
2. Go to <Your Path>\Win64\TARGETDIR.
3. Make a backup copy of the file "run_after_finish.bat".
4. Open the file "run_after_finish.bat" to edit.
5. Edit the line rem set SKIP_VALIDATIONS=-wOsValidator -wLicenseTypeValidator to skip validations during server configuration as below:

From

```
rem set SKIP_VALIDATIONS=-wOsValidator -wLicenseTypeValidator
```

To

```
set SKIP_VALIDATIONS=-wOsValidator-wLicenseTypeValidator
```

6. Save file run_after_finish.bat.
7. Run Setup.msi from <Your Path>\Win64.

For silent installation:

Requires changes in the file run_silent.bat from ALM\Installation\Win64 before starting the silent installation:

1. Copy "Win64" folder from DVD \ALM\Installation\ to target server machine.
2. Go to <Your Path>\Win64.
3. Make a backup copy of the file "run_silent.bat".
4. Open the file ""run_silent.bat" to edit.
5. Make changes in lines after set CONF_CP="%LD%*;"%ALD%*" line to skip validations during server configuration as below:

From

```
call %RUN_JAVA% -Djava.library.path="%ALD%" %ALM_OPTS% -cp %CONF_CP%  
com.hp.qc.install.setup.QcConfigMain -silent
```

To

```
set SKIP_VALIDATIONS=-wOsValidator -wLicenseTypeValidator
```

```
call %RUN_JAVA% -Djava.library.path="%ALD%" %ALM_OPTS% -cp %CONF_CP%  
com.hp.qc.install.setup.QcConfigMain -silent %SKIP_VALIDATIONS%
```

6. Save file run_silent.bat.
7. Run run_silent.bat -c qcConfig.properties.

Recommended Environments

The following table includes recommended configurations for each operating system.

Operating System	Database Server	Web Server
Windows Server 2008 R2 (SP1) 64 bit	SQL 2008 R2 (SP1)	IIS 7.5
Linux Red Hat 6.2 64 bit	Oracle 11.2.0.3	Apache 2.2

Client-Side System Requirements

This section describes the client system configurations for installing an ALM client.

CPU	Core duo 1.6 Ghz (or higher) or equivalent compatible processor
Memory (RAM)	2 GB minimum
Free disk space	2 GB minimum
Prerequisites	<ul style="list-style-type: none">• Visual C++ 2005 SP1 ATL Security Update Redistributable• Microsoft .NET Framework 4• Microsoft Office 2010 (Recommended) or 2007• Virtualization: Citrix XenApp; Microsoft Terminal Services <p>Note: ALM has been tested only on one (usually the latest) version of the virtualization product. Other virtual environments are supported as long as the virtualization vendor claims full compatibility between the virtual and physical environment.</p>
Screen Resolution	Supported resolution is 1024x768
Text Size (DPI)	DPI of 100%

Operating System	Browser	HP ALM 11.52 Patch Level
<ul style="list-style-type: none"> • Windows 7 SP1 32 bit (Recommended) or SP1 64 bit • Windows XP SP3 32 bit • Windows Server 2008 R2 SP1 64 bit • Windows Server 2008 SP2 32 or 64 bit • Windows 8 support is limited to the following scenarios: • On a Windows 8 host, you can run or edit a UFT, BPT, or Load Runner test that is stored in ALM. • If the automation engine of an automated test is on a Windows 8 machine, you can execute the test by accessing the ALM client from a host with a fully-supported Operating System. <p>DCOM Notes:</p> <p>If you are integrating ALM with other HP testing tools, you must modify the DCOM permissions on your client machine. For more information, see HP Software Self-solve knowledge base article KM187086.</p> <p>DCOM is not required for running Functional test sets (server-side execution). Functional test sets are available only in ALM Edition.</p>	<p>Microsoft Internet Explorer 8 or 9</p> <p>Note: For users who have restrictions on plugins in their browsers, such as ActiveX, ALM can be loaded using the HP ALM Explorer Add-in. For more information on downloading and installing the add-in, refer to the HP Application Lifecycle Management Installation and Upgrade Guide.</p>	<p>GA</p>
	Microsoft Internet Explorer 10with Windows 7 Sp1*	<p>Patch 1</p>
Microsoft Windows 8.1	Microsoft Internet Explorer 11 with Windows 8.1	<p>Patch 2</p>

- **Note:** From 11.50, the ALM client is certified on 64 bit Windows. However, the client is still a 32 bit application that is based on ActiveX 32 bit and runs under WOW64 (the Windows 32 bit On Windows 64 bit emulator). To enable the client on 64 bit Windows, use a 32 bit instance of Internet Explorer. By default, 32 bit Internet Explorer is located in C:\Program Files (x86)\Internet Explorer. To verify that the client process is running in the emulation mode, open the **Windows Task Manager Processes** tab. All 32 bit processes should be marked with *32.
- For more details regarding this limitation, see: <http://support.microsoft.com/kb/282423>. For more details regarding WOW64, see: [http://msdn.microsoft.com/en-us/library/aa384249\(v=VS.85\).aspx](http://msdn.microsoft.com/en-us/library/aa384249(v=VS.85).aspx).
- Since the ALM client runs as a 32 bit process, you should use 32 bit versions of Visual C++ 2005 SP1 ATL Security Update Redistributable and Microsoft Office.
- For IE 10 PC site should be added to Compatibility view sites.

HP ALM Lab Service for Remote Test Execution System Requirements

This section describes the system requirements for installing HP ALM Lab Service for remote test execution.

Processor	CPU Type: Intel Core, Pentium, AMD or compatible Speed: 2 GHz or higher recommended, 1 GHz minimum
Memory (RAM)	Minimum: 1GB Note: Memory needs depend on the number of add-ins.
Available Hard Disk Space	Minimum: 1GB Note: You must also have an additional 120 MB of free space on the system disk.
Operating System	Windows XP (SP2\SP3) 32 or 64 bit Windows 2003 (SP2) 32 or 64 bit Windows 2003 R2 32 or 64 bit Windows Vista (SP2) 32 or 64 bit Windows Server 2008 (SP2) 32 or 64 bit Windows Server 2008 R2 (SP1) 64 bit Windows 7 (SP1) 32 or 64 bit Windows 8 32 or 64 bit
Operating Systems Supporting Auto Login	Windows XP 32 bit Windows 7 (SP1) 32 or 64 bit Windows Server 2008 R2 (SP1) 64 bit

Installation Instructions

Installation instructions for Microsoft Windows Server


ALM 11.52 patch 2 can be installed only on ALM 11.52 GA Full version.

Before installing ALM Patch 2

1. Verify what version of ALM 11.5x is currently installed on the server.


On the ALM server, select **Control Panel > Programs and Features** or **Control Panel > Add Remove Programs**.

- If 11.52.000 is listed in the **Version** column, then you are using 11.52 GA Full version.

Name	Publisher	Install...	Size	Version
 HP Application Lifecycle Management 11.52	HP	12/23/2013	1.48 GB	11.52.000

Click **View installed updates** to check if you have patch 1 installed.

- If 11.50.00 is listed in the **Version** column, then your installation is 11.50 with/ without additional patches and service packs.

Name	Publisher	Install...	Size	Version
 HP Application Lifecycle Management	HP	9/11/2013	1.95 GB	11.50.000

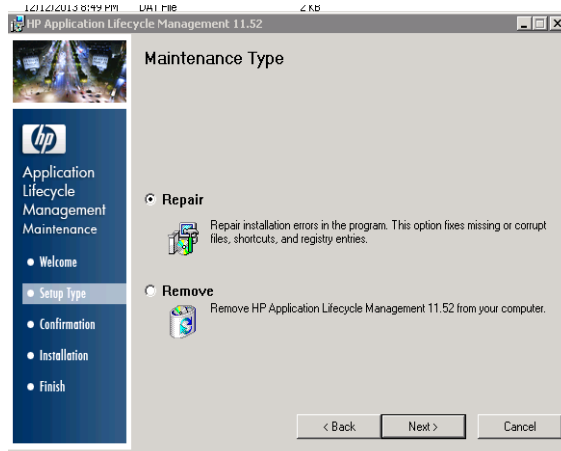
There is no need to view installed updates.

2. Follow the steps below for the version of ALM 11.5x that is currently installed on the server.

- ***If you are using ALM 11.52 GA Full installation with no patches:***

Install ALM 11.52 patch 2.

- **If you are using ALM 11.52 GA Full installation with patch 1:**
 - a. Uninstall patch 1
 - b. Repair 11.52 GA Full (Can be downloaded from <https://h20575.www2.hp.com/ecommerce/efulfillment/downloadpage.do> . After logging in, choose HP Application Lifecycle Management 11.50 + SP2.)
 - In Setup.msi, select **Repair**.



- c. Install ALM 11.52 patch 2

- **If you are using ALM 11.50 GA Full (with/without patches & service packs):**
 - a. Uninstall 11.50 GA Full. (When you uninstall the full version, all patches and service packs are automatically uninstalled.) For more information on uninstalling, see the *HP Application Lifecycle Management Installation & Upgrade Guide*.
 - b. Install 11.52 GA Full
 - c. Install ALM 11.52 patch 2

Important: Before upgrading from ALM 11.50 to ALM 11.52, it is recommended to back up the LAB Project.

Installing ALM Patch 2

- It is recommended that you use the executable (EXE) file for installing the patch.
- The MSP file is mandatory for proper execution of the ALM EXE installer execution. The file should be kept in place.

For MSP installation:

Executing the MSP version instead of executing the installer's executable (EXE) requires termination of the ALM server's system-tray icon process. Executing the MSP version without terminating the system-tray icon process may result in a malfunction of the ALM server.

To stop ALM's server system-tray icon processes:

- Open CMD window as administrator and type the following command:
>taskkill.exe /F /IM ALMTrayIcon.exe

To install the patch:

- Open CMD window as administrator and type the following command:
>msiexec /p SP2PATCH02.msp REINSTALL=ALL REINSTALLMODE=emus

Multi-language Support

UNICODE Compliance

You can enter text in more than one non-English language, when working with an Oracle UTF-8 database. For MS-SQL databases, you can define your projects as Unicode to allow multi-language support. You can also convert existing MS-SQL projects to be Unicode compliant. In addition, you can enter non-English text regardless of the system locale setting on the ALM client machine. However, if the ALM servers are not Unicode compliant, non-English characters entered on the ALM client machine appear as question marks.

Multi-language Support

To enable multi-lingual support the DB and FS servers must support Unicode. Unicode is a feature of MS-SQL that allows multi-language support. In Oracle, multi-language support is defined when installing the server.

HP Software Support

You can visit the HP Software Support Web site at: www.hp.com/managementsoftware/services

HP Software online support provides an efficient way to access interactive technical support tools. As a valued support customer, you can benefit by using the support site to:

Search for knowledge documents of interest

Submit and track support cases and enhancement requests

Download software patches

Manage support contracts

Look up HP support contacts

Review information about available services

Enter into discussions with other software customers

Research and register for software training

Most of the support areas require that you register as an HP Passport user and sign in. Many also require a support contract. To find more information about access levels, go to:

www.hp.com/managementsoftware/access_level

To register for an HP Passport ID, go to: www.managementsoftware.hp.com/passport-registration.html

Legal Notices

© Copyright 1992 - 2014 Hewlett-Packard Development Company, L.P.

For information about third-party and/or open source license agreements, see the Licenses directory on the product installation media.

Confidential computer software. Valid license from HP required for possession, use or copying. Consistent with FAR 12.211 and 12.212, Commercial Computer Software, Computer Software Documentation, and Technical Data for Commercial Items are licensed to the U.S. Government under vendor's standard commercial license.

The only warranties for HP products and services are set forth in the express warranty statements accompanying such products and services. Nothing herein should be construed as constituting an additional warranty. HP shall not be liable for technical or editorial errors or omissions contained herein.

The information contained herein is subject to change without notice.

Microsoft® is a U.S registered trademark of Microsoft Corporation.

Issues Addressed by Previous Patches

HP ALM 11.52 Patch 01

Known Limitations

QCCR1J62569 Two simultaneous users were not able to select or download attachments from the same entity. The entity was locked by the first user's selection of the attachment.

Note: The entity is still locked for other users when one user renames, uploads, removes or changes the description of an attachment. Other users cannot edit attachments during that time.

206276 Users in certain user groups could not save changes in Performance tests.

If the update folder in the Permissions page only shows a "faded" check mark, the user has to uncheck it and then check it again to grant the missing permissions.

Certified Environments

ALM 11.52 Patch 1 Certified with PC 11.52 Patch 1.

Patch 1, HP ALM 11.52 is certified for the following servers and tools:

-Windows Server 2012 64 bit

-Microsoft Internet Explorer 10 on Windows 7 SP1

For an overall description of certified environments see the [System Requirements](#) section below.

Fixed Defects

Lab Management

204076 [Internal] After enabling the lab extension, the user could not create a timeslot if he belonged to a custom group created before the extension was enabled, even if the proper permissions were selected in Project Customization.

206276 Users in certain user groups could not save changes in Performance tests.

Note: In order for the user to get permissions to edit a Performance test, when granting Update permissions on Test, the entire Update folder has to be selected in the Permissions page.

Limitation: If the update folder only shows a "faded" check mark, the user has to uncheck it and check it again to grant the missing permissions.

206393 [Internal] Private hosts could not be added by some user groups.

206294 [Internal] Vusers could not be added for a Performance test when editing a Build Verification Suite.

Business Process Testing

204042 [Internal] In a versioning enabled project, removing a Business Process Testing component with thousands of iterations was slower than expected.

204738 [Internal] In a versioning enabled project, adding hundreds of iterations (each containing more than 30 parameters for a Business Process Testing component) at once, was slower than expected.

205130 [Internal] In a versioning enabled project, an error was thrown when copy-pasting a huge Business Process Test containing more than 10 thousand iteration parameters.

204309 [Internal] The "CommandList.MoveUp" and "CommandList.MoveDown" workflow events were not triggered when components were moved in a Business Process Test by drag and drop.

204299 [Internal] Changes done for Flow parameters from the grid view were not saved if after changing them, another test was selected.

205038 [Internal] ALM passwords were visible from the Business Process Testing Remote Agent log.

205203 [Internal] The status of Business Components in the last run results report was always "No Run" in cases where a required UDF was defined for test steps.

205109 [Internal] When trying to run a Business Process Test with a specific structure that contained Flows and Groups, an error "Index was out of range" appeared.

205205 [Internal] When trying to ungroup a components group in a Business Process Test or Flow test, an error "Item doesn't exist" appeared.

204300 [Internal] Creating many Business Component iterations from the Iterations dialog structure was slower than expected.

206220 [Internal] When performing "Undo Check-out" after grouping Business Components, an error "Object Reference" appeared.

204439 [Internal] When running Business Process Tests manually, an error message was raised when parameters were added to already included Business Components using the "<<< >>>" notation.

204301 [Internal] Business Process Test execution: The transition time between Business Components and between iterations of Business Components for tests with a lot of iterations and Business Components, took longer than expected.

204303 [Internal] Business Process Test execution: Execution initialization time for Business Process Tests having many Business Components and iterations took longer than expected.

204343 [Internal] Business process Test execution: When trying to run Business Process Tests from a machine on which the login was done using a user name having non-English characters, an error appeared.

203703 [Internal] Business Process Test execution: When trying to run Business Process Tests with many Business Components and iterations, the Business Process Testing Remote Agent crashed and the execution of the tests was stopped.

204298 [Internal] When synchronizing from a baseline containing automated components that were automated only after they were imported, the following issues occurred in the target library:

- Business Process Tests that included such components failed when executed from the target library, using Unified Functional Testing
- Business Process Tests that included such components ran successfully when executed from the target library using QuickTest Professional 11.00, but the execution was done in non-wrapper mode, and the execution was potentially slower
- The keyword view of such components, when selected using the Unified Functional Testing plugin, was not displayed properly

205146 [Internal] When upgrading projects to ALM11.5, if there were Business Components in which there were two or more parameters with the same name (but different case text) in the same Business Component, an error of "FP_COMPONENT_PARAM_IDX is not found" appeared.

203930 [Internal] Workflow event Req_CanPost was not triggered when a new folder was created in the Requirements module.

205293 [Internal] When calling OTA from a VB Script, the interface IBaseFactory2 properties could not be accessed.

204839 [Internal] Modify permission of a table (an entity) was not aligned with its child columns (fields).

QCCR1J62938 A "GenerateBPTWrapperTest System.NullReferenceException" error occurred when running certain Business Process Testing Wrapper Tests.

QCCR1J62764 Business Components parameters could not be reordered.

QCCR1J62630 Providing multi-line values for Business Component parameters was not possible.

QCCR1J62811 Export defects to Excel could not be completed and the "Could not export to a file." error was displayed when a huge amount of data was kept in the comments field.

Export operation now warns if specific cells within the grid exceed 32k in size. The export operation succeeds, but data beyond 32k is truncated. Cells with truncated data are colored red.

QCCR1J62728 TDCommand protocol error occurred when navigating by td:// link.

Management

204335 [Internal] After adding an Action into a QuickTest Professional test and capturing a new baseline, the library synchronization did not replicate the Action scripts to the target project.

204825 [Internal] After deleting an Action from a QuickTest Professional test and capturing a new baseline, the library synchronization failed.

QCCR1J62435 Listing a release with 100 or more cycles took a long time.

QCCR1J62347 When expanding the Release/Cycle tree, an error occurred if there was a data hiding filter on user defined fields that allowed multiple values.

QCCR1J28903 Synchronizing Libraries between projects using baseline could not be completed and an error message was displayed.

QCCR1J62400 A Manual test to a remote VC project could not be copied if the test called another test with actual parameter values.

Analysis

QCCR1J62635 Progress graph generation failed in ORACLE 10 ALM projects.

204769 [Internal] In an Excel worksheet created by ALM, inserting a graph based on data from only some of the rows in the worksheet caused an error when trying to save the report to the ALM server.

QCCR1J62707 Large images in rich text were cropped in the Project report.

QCCR1J62854 Versioning related fields were not included in Document Generator when Full page was used for Requirement Entity reporting.

QCCR1J62591 In Live Analysis on a copied Test set folder, no information was displayed for the Test Instance Progress Graph.

QCCR1J62808 The Select Baseline option in project reports could not be selected.

QCCR1J62684 The Rich Text field was improperly rendered in Requirements Project Reports.

This fix requires the additional manual step of uploading the 'Style Template Fixed' template as default Style Template for project reports.

General

QCCR1J62725 "Invalid Server Response" and "server is not available" errors occurred in some login scenarios.

QCCR1J63008 Trying to use the function **DownloadPictures**, associated with a business process object, resulted in an exception thrown by OTA: "Attempted to read or write protected memory."

QCCR1J62356 URL attachments with non-latin characters could not be opened.

QCCR1J62461 When trying to access folders in the UI with a large number of attachments (3000+), the error "not enough storage is available to process this command" occurred on the client.

QCCR1J62610 In the Requirements Module Coverage Analysis view, when using an "OR" filter for requirements type, coverage analysis was not shown.

QCCR1J62589 Full text search on Test Design Steps did not work when the DB used was SQL Server.

QCCR1J62522 Server was muted due to an out of memory error caused by corrupted data in the CROS_REF table.

Customization

QCCR1J62460 An error was encountered when trying to enter the Set Default Values dialog after a selected default value was removed from the custom list.

QCCR1J62432 Granting group permissions to create and modify requirements also required granting permission to cover those requirements with tests.

QCCR1J62422 The "Failed initializing plugin Requirements Plugin" error occurred after product installation in a specific environment.

Defect Module

QCCR1J62472 In specific upgraded projects, e-mail icons appeared in the defect details dialog box on items that should not have had them (Status or Modified, for example).

Installation & Upgrade

QCCR1J62462 After project migration, accent characters in the description of the component's parameters were replaced by HTML tags.

QCCR1J62623 In the upgrade of specific projects, the following error occurred: "SQL INSERT query has less columns than actual Resource_Folders table defined".

QCCR1J62466 Project update could not complete successfully when redundant data existed in the SYSTEM_FIELD table.

QCCR1J62592 Microsoft Office Export add-in stopped responding when activated by a user belonging exclusively to a group set with a data-hiding filter.

Integration

QCCR1J62632 Rich text conversion could not be completed successfully when importing projects from QC 10.0 to ALM 11.0.

QCCR1J63332 Intermittently QuickTest Professional could not complete execution of a test in a test set upgraded from a previous version.

Requirements Module

QCCR1J62612 Filtering a large requirements tree view while keeping a hierarchical structure was slower than expected.

QCCR1J62645 Unnecessary emails were sent when clicking on Requirement History view in a version controlled project.

QCCR1J62473 Newly typed in text was formatted using bullets after the bullet formatting was cleared from existing text.

QCCR1J62708 Improper numbering was applied on numbered lists in the Rich text editor.

QCCR1J62564 Extra lines were unexpectedly added to the Rich Text field.

QCCR1J62561 The border lines of a table row in rich text were broken after merging the cells and undoing this action.

QCCR1J30738 When expanding the Release/Cycle tree, an error "Failed to Get Simple Key entity" occurred if there was a filter on user defined fields that allowed multiple values.

QCCR1J62439 In a version control enabled project, when logging in as a user belonging to a group with data hiding on test/resource, navigating to the History tab of an entity in Business Models displayed an "Index was out of range" error.

QCCR1J62686 The Rich Text field was improperly rendered in Requirements Project Reports.

There is still one limitation that font size and style of a number in a numbered list does not match the size and style of the line in the Rich Text UI.

This fix requires the additional manual step of uploading the 'Style Template Fixed' template as defaultStyle Template for the project report.

QCCR1J62317 For requirements from imported libraries, the green asterisk in the Test Coverage tab was displayed although there was no linked test.

QCCR1J62438 Removing Test Coverage from multiple scripts generated an error.

QCCR1J62436 In the Requirements Traceability view, the sort order was not saved.

Site Admin

QCCR1J62831 Site Analysis did not show the current day's result when selecting a Custom Period including the current day.

QCCR1J28725 Updating a conflicting user record could not be completed on a Chinese edition of HP ALM.

QCCR1J62730 Import of a consecutive LDAP user by keyword was not possible.

QCCR1J62887 ALM project could not be accessed using multi-value UDFs over Oracle 11g.

206384 [Internal] Verify/Repair inconsistency in data verification caused upgrade corruption.

Tests Module

QCCR1J62469 An error was encountered when clicking on a Test Set containing QuickTest Professional tests: "The opening tag 'br' in line 1 does not match the end tag of 'div'. Line 1. position 165".

QCCR1J62554 When copying a Test Set, the Tester field content was copied into the Test Instances in the new Test Set, although the status of the test run was No run. Now when a Test Set is copied, the Tester field is blank.

QCCR1J62614 Tests with missing configurations and orphan Run results files in the Smart Repository were not deleted from the Smart Repository (namely from SMART_REPOSITORY_LOGICAL_FILE and SMART_REPOSITORY_PHYSICAL_FILE tables).

QCCR1J62569 Two simultaneous users were not able to select or download attachments from the same entity. The entity was locked by the first user's selection of the attachment.

Note: The entity is still locked for other users when one user renames, uploads, removes or changes the description of an attachment. Other users cannot edit attachments during that time