

HP Operations Orchestration OneView Integration

For the Windows and Linux Operating Systems

Software Version: Content 2013-12 (10.x)

Integration Guide

Document Release Date: December 2013

Software Release Date: December 2013



Legal Notices

Warranty

The only warranties for HP products and services are set forth in the express warranty statements accompanying such products and services. Nothing herein should be construed as constituting an additional warranty. HP shall not be liable for technical or editorial errors or omissions contained herein.

The information contained herein is subject to change without notice.

Restricted Rights Legend

Confidential computer software. Valid license from HP required for possession, use or copying. Consistent with FAR 12.211 and 12.212, Commercial Computer Software, Computer Software Documentation, and Technical Data for Commercial Items are licensed to the U.S. Government under vendor's standard commercial license.

Copyright Notice

© Copyright 2013 Hewlett-Packard Development Company, L.P.

Trademark Notices

Adobe™ is a trademark of Adobe Systems Incorporated.

Microsoft® and Windows® are U.S. registered trademarks of Microsoft Corporation.

UNIX® is a registered trademark of The Open Group.

This product includes an interface of the 'zlib' general purpose compression library, which is Copyright © 1995-2002 Jean-loup Gailly and Mark Adler.

Documentation Updates

The title page of this document contains the following identifying information:

- Software Version number, which indicates the software version.
- Document Release Date, which changes each time the document is updated.
- Software Release Date, which indicates the release date of this version of the software.

To check for recent updates or to verify that you are using the most recent edition of a document, go to: <http://h20230.www2.hp.com/selfsolve/manuals>

This site requires that you register for an HP Passport and sign in. To register for an HP Passport ID, go to: <http://h20229.www2.hp.com/passport-registration.html>

Or click the **New users - please register** link on the HP Passport login page.

You will also receive updated or new editions if you subscribe to the appropriate product support service. Contact your HP sales representative for details.

Support

Visit the HP Software Support Online web site at: <http://www.hp.com/go/hpssoftwaresupport>

This web site provides contact information and details about the products, services, and support that HP Software offers.

HP Software online support provides customer self-solve capabilities. It provides a fast and efficient way to access interactive technical support tools needed to manage your business. As a valued support customer, you can benefit by using the support web site to:

- Search for knowledge documents of interest
- Submit and track support cases and enhancement requests
- Download software patches
- Manage support contracts
- Look up HP support contacts
- Review information about available services
- Enter into discussions with other software customers
- Research and register for software training

Most of the support areas require that you register as an HP Passport user and sign in. Many also require a support contract. To register for an HP Passport ID, go to:

<http://h20229.www2.hp.com/passport-registration.html>

To find more information about access levels, go to:

http://h20230.www2.hp.com/new_access_levels.jsp

HP Software Solutions Now accesses the HPSW Solution and Integration Portal Web site. This site enables you to explore HP Product Solutions to meet your business needs, includes a full list of Integrations between HP Products, as well as a listing of ITIL Processes. The URL for this Web site is

<http://h20230.www2.hp.com/sc/solutions/index.jsp>

Contents

Contents	3
Introduction	4
Purpose	4
Audience	4
Prerequisites	4
Supported Versions	4
Downloading OO Releases and Documents on HP Live Network	5
Getting Started with the HP OneView Integration	7
Installing and Configuring the Integration	7
Use Cases	7
HP OneView Integration Architecture	9
Location of HP OneView Integration Operations and Flows in OO Studio	10
Troubleshooting	11
Security	11

Introduction

This chapter includes:

Purpose	4
Audience	4
Prerequisites	4
Supported Versions	4
Downloading OO Releases and Documents on HP Live Network	5

Purpose

The HP OneView integration allows users to create HP Operations Orchestration flows that are integrated with HP OneView.

HP OneView is a single integrated platform that provides a large-scale system and network management of an organization's IT infrastructure.

HP OneView provides a fast and modern user interface and an open development platform using the Representational State Transfer (REST) API. Among the wide variety of the appliance capabilities for managing are included: converged infrastructure groups and server profiles, enclosure groups and logical interconnect groups, logical interconnects, network sets, firmware management. This management tool allows provisions, monitors, updates and repairs an infrastructure.

Regarding the infrastructure model of HP OneView, OO includes a set of operations that allow the user to create and get: enclosure, enclosure group, server hardware, server hardware type, server profile, networks.

Audience

This guide is intended for users who are working with environments that have HP OneView software installed.

Prerequisites

To use this integration successfully you must first install the HP OneView software.

Supported Versions

Operations Orchestration Version	HP OneView Version
OO Content 2013-12	1.0

Downloading OO Releases and Documents on HP Live Network

HP Live Network provides an Operations Orchestration Community page where you can find and download supported releases of OO and associated documents.

Note: The Community page requires that you register for an HP Passport and sign-in.

To register for an HP Passport ID:

Go to: <http://h20229.www2.hp.com/passport-registration.html>

Or

Click the **New users - please register** link on the HP Passport login page

To download OO releases and documents:

1. Go to the HPLN site: <https://hpln.hp.com/>. Page 1 of HP Live Network page opens.
2. Go to page 2 and click the **Content** link under **Operations Orchestration**.



Operations Orchestration

[Announcements](#) | [Forum](#) | [Content](#)

Optimize operational cost and
Improve service quality by
enabling end-to-end IT
Process Automation

3. From the **Content Catalog** tab, select **Operations Orchestration Content Packs**.
4. Select the Downloads link.
5. Click **Downloads > HP Operations Orchestration 10.00**.

6. Search for the required HP Operations Orchestration Content Pack in which the integration can be found (oo10-hp-solutions-cp).

Getting Started with the HP OneView Integration

This chapter includes:

Installing and Configuring the Integration	7
Use Cases	7
HP OneView Integration Architecture	9

Installing and Configuring the Integration

For this integration you must first install Operations Orchestration 10 and deploy the Base and HP Solutions Content Packs.

Use Cases

The use cases of this integration are:

Activity

- Get Task Details

Authentication

- Login
- Logout

Networking

- **Ethernet Networks**
 - Get Ethernet Networks List
- **Fibre Channel Networks**
 - Get Fibre Channel Networks List
- **Logical Interconnect Groups**
 - Get Logical Interconnect Groups List
- **Logical Interconnects**
 - Get Logical Interconnects List

- **Network Sets**

- Get Network Sets List

Samples

- **Utilities**

- Convert Bios Object Type
- Create Bios Object
- Create Boot Object
- Create Firmware Object
- Create Server Profile
- Get Firmware Driver By Name
- Get Server Hardware Details by Name
- Update Firmware for Server Profile

Servers

- **Enclosure Groups**

- Create Enclosure Group
- Get Enclosure Group List

- **Enclosures**

- Add Enclosure

- **Server Hardware**

- Add Server Hardware
- Get Server Hardware Details
- Get Server Hardware List
- Update Power State

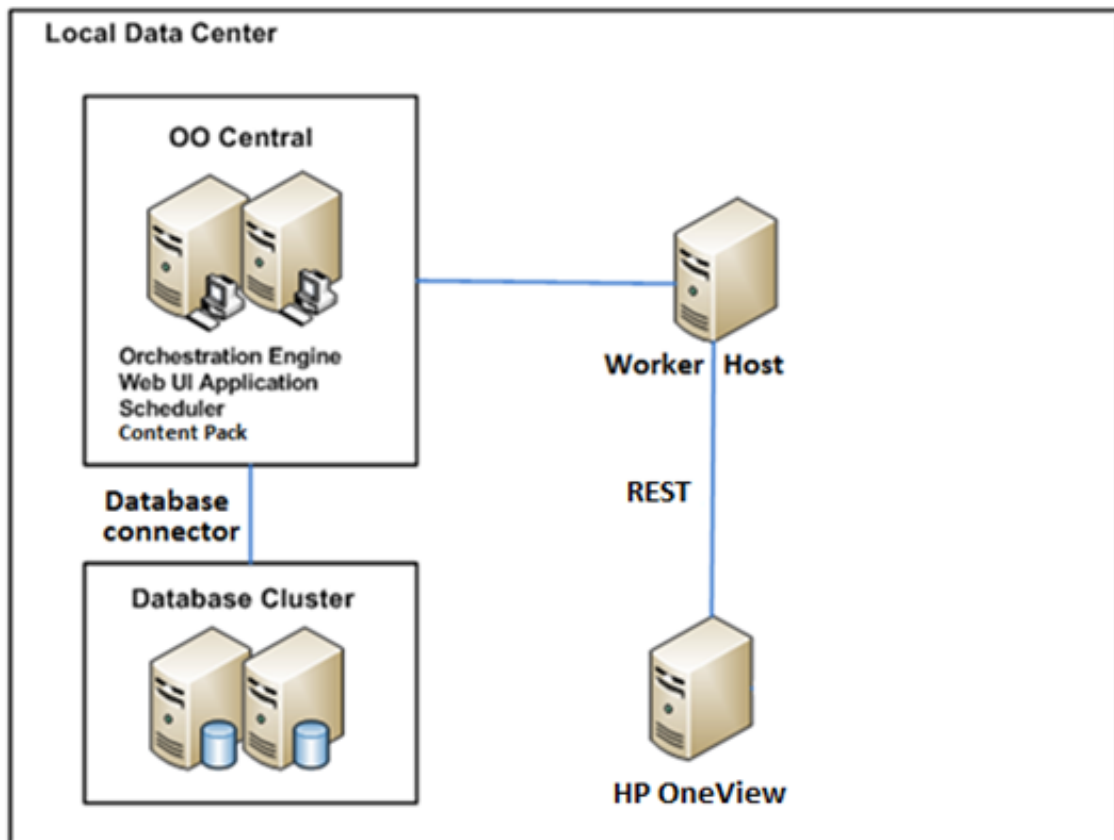
- **Server Hardware Types**

- Get Server Hardware Type Details
- Get Server Hardware Type List
- **Server Profiles**
 - Create Server Profile
 - Delete Server Profile
 - Get Server Profile
 - Update Server Profile

Settings

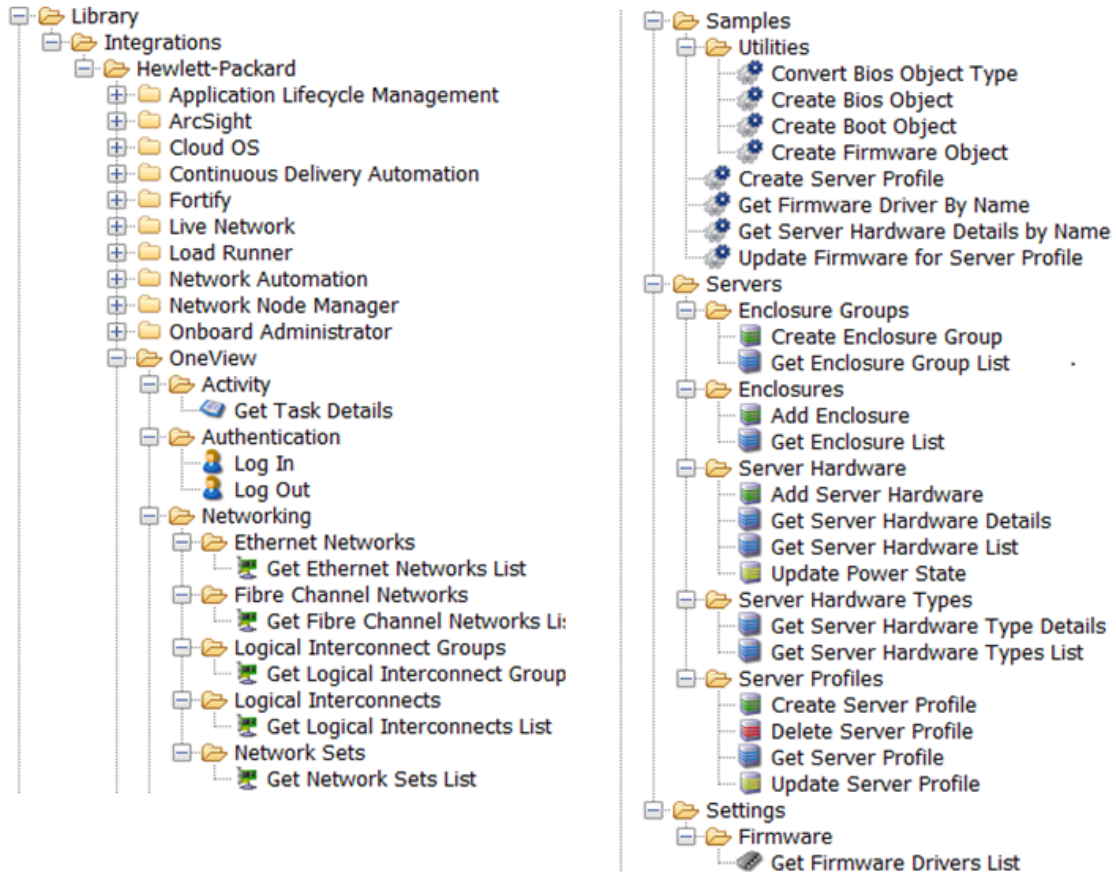
- **Firmware**
 - Get Firmware Drivers List

HP OneView Integration Architecture



Location of HP OneView Integration Operations and Flows in OO Studio

The HP OneView integration includes the following operations and flows in OO Studio
Library/Integrations/Hewlett-Packard/OneView:



Troubleshooting

This section provides troubleshooting procedures and tools that you can use to solve issues you may encounter while using this integration.

When troubleshooting issues related to the OneView integration, pay attention to the `returnResult` output of the operations. It contains messages about the issue and how you can fix it.

Security

This section describes how security is handled by the OneView integration.

From HP Operations Orchestration, you can send requests to OneView using either `http` or `https` protocol. All the requests are made using a `sessionId` token that can be generated using the `Login` operation available here: [Library/Integrations/Hewlett-Packard/OneView/Authentication](#).

To clear the `sessionId`, use the **Logout** operation available in the same location.

For more information on OneView security, see *“Understanding the security features of HP OneView”* in the Help menu available in the appliance’s interface.

