

HP Data Protector

Software Version: 8.10

Getting Started Guide

Document Release Date: November 2016

Software Release Date: November 2016



Legal Notices

Warranty

The only warranties for HP products and services are set forth in the express warranty statements accompanying such products and services. Nothing herein should be construed as constituting an additional warranty. HP shall not be liable for technical or editorial errors or omissions contained herein.

The information contained herein is subject to change without notice.

Restricted Rights Legend

Confidential computer software. Valid license from HP required for possession, use or copying. Consistent with FAR 12.211 and 12.212, Commercial Computer Software, Computer Software Documentation, and Technical Data for Commercial Items are licensed to the U.S. Government under vendor's standard commercial license.

Copyright Notice

© Copyright 2016 Hewlett-Packard Development Company, L.P.

Trademark Notices

Adobe® is a trademark of Adobe Systems Incorporated.

Microsoft® and Windows® are U.S. registered trademarks of Microsoft Corporation.

UNIX® is a registered trademark of The Open Group.

Documentation Updates

The title page of this document contains the following identifying information:

- Software Version number, which indicates the software version.
- Document Release Date, which changes each time the document is updated.
- Software Release Date, which indicates the release date of this version of the software.

To check for recent updates or to verify that you are using the most recent edition of a document, go to: <http://h20230.www2.hp.com/selfsolve/manuals>

This site requires that you register for an HP Passport and sign in. To register for an HP Passport ID, go to: <http://h20229.www2.hp.com/passport-registration.html>

Or click the **New users - please register** link on the HP Passport login page.

You will also receive updated or new editions if you subscribe to the appropriate product support service. Contact your HP sales representative for details.

Support

Visit the HP Software Support Online web site at: <http://www.hp.com/go/hpsoftwaresupport>

This web site provides contact information and details about the products, services, and support that HP Software offers.

HP Software online support provides customer self-solve capabilities. It provides a fast and efficient way to access interactive technical support tools needed to manage your business. As a valued support customer, you can benefit by using the support web site to:

- Search for knowledge documents of interest
- Submit and track support cases and enhancement requests
- Download software patches
- Manage support contracts
- Look up HP support contacts
- Review information about available services
- Enter into discussions with other software customers
- Research and register for software training

Most of the support areas require that you register as an HP Passport user and sign in. Many also require a support contract. To register for an HP Passport ID, go to:

<http://h20229.www2.hp.com/passport-registration.html>

To find more information about access levels, go to:

http://h20230.www2.hp.com/new_access_levels.jsp

HP Software Solutions Now accesses the HPSW Solution and Integration Portal Web site. This site enables you to explore HP Product Solutions to meet your business needs, includes a full list of Integrations between HP Products, as well as a listing of ITIL Processes. The URL for this Web site is <http://h20230.www2.hp.com/sc/solutions/index.jsp>

Contents

Contents	3
Chapter 1: Installation	5
Installing on Windows systems	5
Prerequisites	5
Installing Cell Manager	6
Prepare for installation	6
Install Data Protector	7
Run Data Protector	7
Installing clients	7
Prerequisites	7
Installing remotely, from the Cell Manager GUI	8
Installing locally, on the intended system	8
Installing on UNIX systems	8
Installing Cell Manager	9
Prerequisites (HP-UX)	9
Prerequisites (Linux)	9
Procedure	9
Running Data Protector	10
Installing clients	10
Prerequisites	10
Remote installation	10
Local installation	11
Next steps	11
Configuring backup devices	12
Configuring a file library device	12
Configuring a standalone drive	13
Autoconfiguration	13
Manual configuration	13
Formatting media	14

Chapter 2: Backing up your system	15
Defining a schedule for a simple backup routine	15
Chapter 3: Restoring from a backup	17
Chapter 4: More information	18
Documentation map	18
Abbreviations	18
Map	19
Integrations	20
Licensing	22
For more information	22
We appreciate your feedback!	23

Chapter 1: Installation

Note: This guide applies to the full Data Protector product. If you have a Single Server Edition, some of the platforms and features mentioned do not apply.

This guide is designed to help you get started quickly. Using the default settings, you can quickly and easily install the software, create a backup, and do a restore.

Installing on Windows systems

Note: For full installation details, see the *HP Data Protector Installation and Licensing Guide* in the Docs directory of the top level of the Windows installation DVD-ROM.

Prerequisites

- Management server (Cell Manager):
 - 4 GB of RAM

For recovery of the Internal Database, twice as much total RAM is required.
 - 1.5 GB of free disk space + approximately 100 bytes for each backed up file (for use by the IDB)

If you have insufficient free storage space on the chosen disk volume, you can mount another volume to a directory on it, but you should do so before the installation.
- Backup client (Disk Agent):
 - 64 MB of RAM (128 MB recommended)
 - 20 MB of disk space
- Device server (Media Agent):
 - 64 MB of RAM (128 MB recommended)
 - 20 MB of disk space
- User Interface:
 - 512 MB of RAM
 - 150 MB of disk space
- Guides and Help
 - 100 MB for guides in PDF format and the Help system

These figures are the requirements for the components only. They do not include space allocation for the operating system, its paging file, and other applications.

Installing Cell Manager

For details of supported platforms, see the latest support matrices at <http://support.openview.hp.com/selfsolve/manuals>.

Prepare for installation

1. On the system that is to be your Data Protector Cell Manager:
 - a. For a standalone tape drive, connect the tape drive to the Data Protector Cell Manager and power it on.
 - b. Enable TCP/IP protocol and hostname resolution.

To check if they are enabled:

- i. Verify that name resolution is working properly by finding the name of the computer:
 - Open Command Prompt (on Windows systems) or Terminal (on UNIX systems).
 - Run: `hostname`

The name of your computer will be displayed.

- ii. Verify name resolution and reachability:
 - Run: `nslookup Hostname`
 - Trigger a reverse DNS lookup, by running: `nslookup IPAddress`

The network is set up properly when you get the same hostname and IP address from both commands.

If you have problems with your network, see the *HP Data Protector Troubleshooting Guide*.

- c. Assign a static IP address.
 - d. Deactivate the Windows tape device and changer drivers (recommended). Only use these drivers in exceptional cases, for example, when other applications access this tape device.
2. Log on to the system as Administrator (on Windows systems) or root (on UNIX systems).
3. Set up a separate operating system account for use with Data Protector, such as `dpadmin`.

On Windows systems, ensure that:

- The user is a member of Administrators and Backup Operators user groups.
- The user has logon rights as service (Windows advanced rights).

This user account is needed solely to provide the required services. It will not be used to log on to an individual's system.

The account should be used as the Data Protector service account in server and client installations. In a Windows domain, you only need to set up the account on the Primary Domain Controller.

Install Data Protector

1. Insert the Windows installation DVD-ROM and start the wizard:
 - 64-bit AMD64/Intel EM64T systems: `\x8664\setup.exe`
2. Select **Cell Manager** and follow the wizard using the default values.
3. In the **Account information** window, enter the user name and password for the user account you created in step 3 of the installation preparation procedure.

Run Data Protector

Start > Programs > HP Data Protector > Data Protector Manager

For further information, see the documentation in the `Docs` directory in the top-level directory of the DVD-ROM.

Installing clients

See <http://support.openview.hp.com/selfsolve/manuals> and search for "Data Protector". Select version 8.10 to find out about supported platforms with this release.

Prerequisites

- Cell Manager installed
- Administrator rights and password
- TCP/IP protocol and node name resolution enabled

RAM and disk space —minimum and recommended

Client system component	RAM (MB)	Disk space (MB)
User Interface	512 ¹	150 ²
Disk Agent	64 for each (128 recommended)	20 for each
Media Agent		
integration components		

Client system component	RAM (MB)	Disk space (MB)
English Documentation (Guides, Help)	n/a	100

¹Depends on the number of elements that need to be displayed at a time.
²The page file alone needs to be able to grow to about 3 times the physical memory

Installing remotely, from the Cell Manager GUI

1. Log on to the system as Administrator.
2. Click **Start > Programs > HP Data Protector > Data Protector Manager**.
3. In the Data Protector Manager, switch to the **Clients** context.
4. In the Scoping Pane, right-click **Clients** and select **Add Clients** to start the wizard.
5. Follow the wizard instructions.

Installing locally, on the intended system

1. Log on to the system as Administrator.
2. Verify network connection between the Cell Manager system and the client system by running the following command: `ping CellManagerHostname`
3. Run:
 - 32-bit systems: `\i386\setup.exe`
 - 64-bit AMD64/Intel EM64T systems: `\x8664\setup.exe`
 - 64-bit Itanium systems: `\ia64\setup.exe`
4. Select **Client**.
5. Follow the wizard instructions.
6. In the Cell Manager system dialog box, enter the name of your Cell Manager.

Installing on UNIX systems

Note: For full installation details, see the *HP Data Protector Installation and Licensing Guide* in the /DOCS/C directory of the UNIX installation DVD-ROM.

Installing Cell Manager

Note: For supported platforms, see the latest support matrices at <http://support.openview.hp.com/selfsolve/manuals>.

The following is an example of a Cell Manager installation with backup device locally attached using the default configuration.

Prerequisites (HP-UX)

- 8 GB of total RAM

For recovery of the Internal Database, twice as much total RAM is required.

- 1.5 GB of free disk space + approximately 100 bytes for each backed up file (for use by the IDB) in the /var directory, where the IDB is stored

If you have insufficient free storage space on the disk volume, you can use linked directories, but you should create the links before the installation and ensure that the destination directories exist.

Prerequisites (Linux)

- 4 GB of total RAM

For recovery of the Internal Database, twice as much total RAM is required.

- 1.5 GB of free disk space + approximately 100 bytes for each backed up file (for use by the IDB) in the /var directory, where the IDB is stored

If you have insufficient free storage space on the disk volume, you can use linked directories, but you should create the links before the installation and ensure that the destination directories exist.

Procedure

On your Data Protector Cell Manager:

1. Mount the UNIX installation DVD-ROM to a mount point, for example:

```
mkdir /cdrom  
mount /dev/dsk/c0t0d0/ cdrom
```

2. Run omnisetup.sh. To run the command from the DVD-ROM:

```
cd /cdrom/LOCAL_INSTALL  
./omnisetup.sh -CM
```

3. Follow the instructions when prompted.

Install clients either from the Cell Manager or locally.

Running Data Protector

The Cell Manager services are automatically started during the installation.

To use the Data Protector GUI, install the GUI client on a Windows system.

Installing clients

See <http://support.openview.hp.com/selfsolve/manuals> and search for “Data Protector”. Select version 8.10 to find out about supported platforms with this release.

Prerequisites

- root permissions on every target system

RAM and disk space —minimum and recommended

Client system component	RAM (MB)	Disk space (MB)
Disk Agent	64 (128 recommended)	10
Media Agent	64 (128 recommended)	20
integration components	64 (128 recommended)	20
English Documentation (Guides, Help)	n/a	95

Remote installation

Distribute the software to clients using the Data Protector user interface. Cross-platform client installation is supported.

1. On you GUI client, start the Data Protector Manager.
2. In the Data Protector Manager, switch to the **Clients** context.
3. In the Scoping Pane, right-click **Clients** and select **Add Clients** to start the wizard.
4. Follow the instructions. For details on each wizard page, see the *HP Data Protector Help*.

After the Media Agent is installed, check your configuration files (`/kernel/drv/st.conf`). For specifics, see Installing Data Protector clients in the *HP Data Protector Installation and Licensing Guide*.

Finally, connect a backup device to the system.

Local installation

1. Insert the UNIX installation DVD-ROM.
2. Mount the installation DVD-ROM to a mount point.
3. Change directory to *Mount_Point/LOCAL_INSTALL* and run:

```
omnisetup.sh [-source directory][-server name][-install component list]
```

For a list of Data Protector component codes, see the *HP Data Protector Installation and Licensing Guide*.

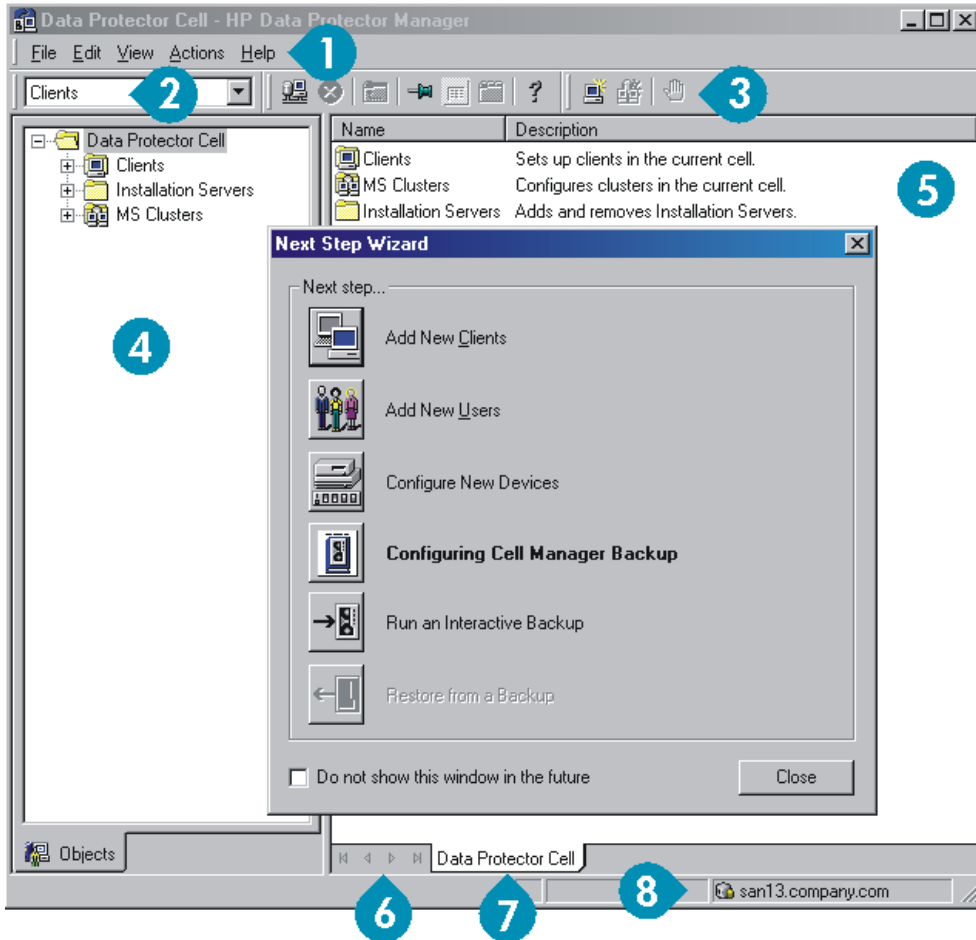
4. `omnisetup` informs you if the installation was completed and if the client was imported to the Data Protector cell. The CORE and CORE-INTEG components are automatically installed.

If you specified the name of the Cell Manager, the client will be imported to the cell. If not, import it using the Data Protector GUI.

Next steps

You can now run the Data Protector Manager.

Start the Data Protector Manager. The Data Protector Manager will open, displaying the Clients context and Next Step wizard:



- | | | | | | | | |
|---|--------------|---|-----------------|---|--------------|---|--------------|
| 1 | Menu bar | 2 | Context list | 3 | Tool bar | 4 | Scoping pane |
| 5 | Results area | 6 | Navigation tabs | 7 | Results tabs | 8 | Status bar |

Configuring backup devices

Configuring a file library device

These instructions are for a simple file library device configuration on a local or shared drive using mostly default options. For other possibilities see the *HP Data Protector Help* index: “configuring backup devices”.

Before you start: On Windows, disable the compression option.

1. Create a directory on a local or shared disk.

Example: C:\FileLibrary

2. Start Data Protector Manager.

3. Select **Devices & Media** from the Context List.
4. Right-click **Devices** and select **Add Device** to open the device definition pane.
5. Enter details:

Device name	Example: File Library Device 01
Description	optional
Client	Select the client to which the device is connected.
Device type	Select File Library .

Click **Next**.

6. Specify the directory for the file library device you created in step 1 and click **Add**.
7. Click **Next**. In the Results Area, select the media type: **File**.
8. Click **Finish**.

Configuring a standalone drive

Autoconfiguration

1. Select **Devices & Media** from the Context List.
2. Right-click **Device**.
3. Select **Autoconfigure Devices**.
4. Select your system from the list and click **Finish**.

Your device is configured automatically.

Manual configuration

Follow the instruction for a file library device above, up to step 4. Then:

1. Enter details:

Device name	Example: LTO-3 Tape Drive
Description	optional
Client	Select the client to which the device is connected.
Device type	Select Standalone .

Click **Next**.

2. Enter the SCSI address by expanding the field and selecting one of the options. Click **Add**.
3. Click **Next**. In the Results Area, select the correct media type, such as **LTO**.
4. Click **Finish**.

Formatting media

Data Protector writes its own header on each tape so it can be recognized later. This can be done manually, as described in this section, or automatically. Before tapes can be used with Data Protector they need to be formatted. Skip this section if you want Data Protector to format the tape automatically.

Caution: Formatting deletes all data on the media.

1. In the Devices & Media Context expand **Pools**.
2. Right-click the appropriate media pool.
3. Select **Format**.
4. In the Results Area select the drive and click **Next**.
5. Keep default settings and click **Next**.
6. Click **Force Operation** and **Default Medium Size** then **Finish**. Data Protector formats the media.

Chapter 2: Backing up your system

The following steps show how to create a backup specification and perform a simple backup.

1. In the Context List, click **Backup**.
2. In the Scoping Pane, expand **Backup** and then click **Backup Specifications**.
3. In the Results Area, right-click the **Filesystem** item and select **Add Backup**.
4. Select the **Blank Filesystem Backup** template and click **OK**.
5. In the Source page that appears in the Results Area, browse for and select the checkboxes next to the directories and files that you want to back up, then click **Next**. If you do not have a tape device connected, select just a few small directories.
6. Use the default backup specifications options or select the desired backup options and click **Next**.
7. Use the predefined schedule options or select the desired backup options and then click **Next**. For an example, see [Defining a schedule for a simple backup routine](#).
8. The backup specification summary is displayed in the Results Area. Click **Next**.
9. Click **Save As** to save the backup specification for later use.
10. Click **Start Backup** to run the backup.
11. When the Start Backup window opens, click **OK** to start the backup using the default specifications.
12. The Backup window shows you the progress of the backup session. The Session Information window will tell you when the backup is finished.

Defining a schedule for a simple backup routine

As an example, suppose you want to define a schedule with a full backup every Friday and incremental backups on other weekdays, all at 21:00h and retained for 4 weeks, plus a full backup each month retained for 12 months.

Data Protector has several predefined schedules. “Weekly full” is close to what is needed—full every Friday and Incr1 every weekday at 21:00h. Incr1 backups back up all changes since the last full backup.

To create the defined schedule:

1. When defining your backup specification, at step 3 in [Manual configuration](#), go to the **Schedule** tab.
2. Click **Predefined**.
3. Select **Weekly full** and click **OK**.

4. Click **Add**.
5. Under **Recurring**, select **Monthly**.

Under **Time options**, specify the time for the monthly backup.

Under **Session options**, from the Backup protection drop-down list, select **Weeks** and enter the number of weeks in the box below (1 year = 52 weeks).

Schedule Backup

Specify the desired backup time, frequency, duration, and type.

Recurring

None
 Daily
 Weekly
 Monthly

Time options

Time: 10 hours 45 minutes
 Use starting
Month: 2005 December Day: 9

Recurring options

Day 1 of every 1 month

Session options

Backup type: Full
Network load: High Medium Low
Backup protection: Weeks
52

OK Cancel Help

6. Click **OK**.
7. Click **Apply**.

Chapter 3: Restoring from a backup

By default, the backup object is restored to the same path from which it was backed up. The following steps show how to perform a simple restore.

1. In the Context List, click **Restore**.
2. Browse the **Filesystem** item and select the client object that you want to restore. The Restore view appears in the Results Area.
3. Browse for and select the check-boxes next to the directories/files to be restored.
4. Select the **Destination** tab to choose where you want to restore to. If you do not select anything, the selected directories/files will be restored to the original path.
5. Click the **Start Restore** button. The restore wizard appears.
6. Follow the proposed defaults in the wizard (click **Next** and **Finish**).
7. The Start Restore Session window opens, showing you the progress of the selected objects being restored to the system.

Chapter 4: More information

Documentation map

Abbreviations

Abbreviations in the documentation map that follows are explained below. The documentation item titles are all preceded by the words “HP Data Protector.”

Abbreviation	Documentation item
CLI	Command Line Interface Reference
Concepts	Concepts Guide
DR	Disaster Recovery Guide
GS	Getting Started Guide
GRE Exchange	Granular Recovery Extension User Guide for Microsoft Exchange Server
GRE SPS	Granular Recovery Extension User Guide for Microsoft SharePoint Server
GRE VMware	Granular Recovery Extension User Guide for VMware vSphere
Help	Help
Install	Installation and Licensing Guide
IG IBM	Integration Guide for IBM Applications: Informix, DB2, and Lotus Notes/Domino
IG MS	Integration Guide for Microsoft Applications: SQL Server, SharePoint Server, and Exchange Server
IG VSS	Integration Guide for Microsoft Volume Shadow Copy Service
IG O/S	Integration Guide for Oracle and SAP
IG Var	Integration Guide for Sybase and Network Data Management Protocol Server
IG VirtEnv	Integration Guide for Virtualization Environments
IG IDOL	Integration with Autonomy IDOL Server

Abbreviation	Documentation item
IG LV	Integration with Autonomy LiveVault
PA	Product Announcements, Software Notes, and References
Trouble	Troubleshooting Guide
ZDB Admin	ZDB Administrator's Guide
ZDB Concepts	ZDB Concepts Guide
ZDB IG	ZDB Integration Guide

Map

The following table shows where to find information of different kinds. Shaded squares are a good place to look first.

	Help	GS	Concepts	Install	Trouble	DR	CLI	PA	Integr. guides						ZDB			GRE	
									MS	O/S	IBM	Var	VSS	VirEnv	Concepts	Admin	IG	Exchange	SPS
Backup	X	X	X						X	X	X	X	X	X	X	X	X		
CLI							X												
Concepts, techniques	X		X						X	X	X	X	X	X	X	X	X	X	X
Disaster recovery	X		X			X													
Installation, upgrade	X	X		X				X											
Instant recovery	X		X											X	X	X			
Licensing	X			X				X											
Limitations	X				X			X	X	X	X	X	X			X			
New features	X							X											
Planning strategy	X		X											X					
Procedures, tasks	X			X	X	X			X	X	X	X	X	X		X	X	X	X
Recommendations			X					X						X					
Requirements				X				X	X	X	X	X	X						
Restore	X	X	X						X	X	X	X	X		X	X	X	X	X
Supported configurations														X					
Troubleshooting	X			X	X				X	X	X	X	X	X		X	X	X	X

Integrations

Look in these guides for details of the integrations with the following software applications:

Software application	Guides
Autonomy IDOL Server	IG IDOL
Autonomy LiveVault	IG LV
IBM DB2 UDB	IG IBM
Informix Server	IG IBM
Lotus Notes/Domino Server	IG IBM

Software application	Guides
Microsoft Exchange Server	IG MS, ZDB IG, GRE Exchange
Microsoft Hyper-V	IG VirtEnv
Microsoft SharePoint Server	IG MS, ZDB IG, GRE SPS
Microsoft SQL Server	IG MS, ZDB IG
Microsoft Volume Shadow Copy Service (VSS)	IG VSS
Network Data Management Protocol (NDMP) Server	IG Var
Oracle Server	IG O/S, ZDB IG
SAP HANA Appliance	IG O/S
SAP MaxDB	IG O/S
SAP R/3	IG O/S, ZDB IG
Sybase Server	IG Var
VMware vCloud Director	IG VirtEnv
VMware vSphere	IG VirtEnv, GRE VMware

Look in these guides for details of the integrations with the following families of disk array systems:

Disk array family	Guides
EMC Symmetrix	all ZDB
HP P4000 SAN Solutions	ZDB Concepts, ZDB Admin, IG-VSS
HP P6000 EVA Disk Array Family	all ZDB, IG-VSS
HP P9000 XP Disk Array Family	all ZDB, IG-VSS
HP 3PAR StoreServ Storage	ZDB Concepts, ZDB Admin, IG-VSS

Licensing

Data Protector comes with an instant-on license for 60 days after installation. Within this period you can request a permanent password from the HP Password Delivery Center (PDC) and install it.

The permanent password permits you to configure a Data Protector cell with regard to your backup policy, provided that you have purchased all required licenses.

To obtain a password, visit the password delivery homepage at <http://www.webware.hp.com> or consult the *HP Data Protector Installation and Licensing Guide*, *Data Protector licensing* section, for more information.

For more information

For more information about HP Data Protector, visit <http://www.hp.com/go/dataprotector> or call your local HP reseller or HP sales office.

We appreciate your feedback!

If you have comments about this document, you can [contact the documentation team](#) by email. If an email client is configured on this system, click the link above and an email window opens with the following information in the subject line:

Feedback on Getting Started Guide (Data Protector 8.10)

Just add your feedback to the email and click send.

If no email client is available, copy the information above to a new message in a web mail client, and send your feedback to AutonomyTPFeedback@hpe.com.

Getting Started Guide
We appreciate your feedback!