

HP IT Executive Scorecard

For the Windows® operating system

Software Version: 9.41

Cloud Optimization Content Acceleration Pack Guide

Document Release Date: December 2013

Software Release Date: December 2013



Legal Notices

Warranty

The only warranties for HP products and services are set forth in the express warranty statements accompanying such products and services. Nothing herein should be construed as constituting an additional warranty. HP shall not be liable for technical or editorial errors or omissions contained herein.

The information contained herein is subject to change without notice.

Restricted Rights Legend

Confidential computer software. Valid license from HP required for possession, use or copying. Consistent with FAR 12.211 and 12.212, Commercial Computer Software, Computer Software Documentation, and Technical Data for Commercial Items are licensed to the U.S. Government under vendor's standard commercial license.

Copyright Notice

© Copyright 2011-2013 Hewlett-Packard Development Company, L.P.

Trademark Notices

- Adobe® and Acrobat® are trademarks of Adobe Systems Incorporated.
- AMD and the AMD Arrow symbol are trademarks of Advanced Micro Devices, Inc.
- Google™ and Google Maps™ are trademarks of Google Inc.
- Intel®, Itanium®, Pentium®, and Intel® Xeon® are trademarks of Intel Corporation in the U.S. and other countries.
- Java is a registered trademark of Oracle and/or its affiliates.
- Microsoft®, Windows®, Windows NT®, Windows® XP, Windows Vista® and SQL Server® are U.S. registered trademarks of Microsoft Corporation.
- Oracle is a registered trademark of Oracle Corporation and/or its affiliates.

Documentation Updates

The title page of this document contains the following identifying information:

- Software Version number, which indicates the software version.
- Document Release Date, which changes each time the document is updated.
- Software Release Date, which indicates the release date of this version of the software.

To check for recent updates or to verify that you are using the most recent edition of a document, go to: <http://h20230.www2.hp.com/selfsolve/manuals>

This site requires that you register for an HP Passport and sign in. To register for an HP Passport ID, go to: <http://h20229.www2.hp.com/passport-registration.html>

Or click the **New users - please register** link on the HP Passport login page.

You will also receive updated or new editions if you subscribe to the appropriate product support service. Contact your HP sales representative for details.

Support

Visit the HP Software Support Online web site at: <http://www.hp.com/go/hpsupport>

This web site provides contact information and details about the products, services, and support that HP Software offers.

HP Software online support provides customer self-solve capabilities. It provides a fast and efficient way to access interactive technical support tools needed to manage your business. As a valued support customer, you can benefit by using the support web site to:

- Search for knowledge documents of interest
- Submit and track support cases and enhancement requests
- Download software patches
- Manage support contracts
- Look up HP support contacts
- Review information about available services
- Enter into discussions with other software customers
- Research and register for software training

Most of the support areas require that you register as an HP Passport user and sign in. Many also require a support contract. To register for an HP Passport ID, go to:

<http://h20229.www2.hp.com/passport-registration.html>

To find more information about access levels, go to:

http://h20230.www2.hp.com/new_access_levels.jsp

HP Software Solutions Now accesses the HPSW Solution and Integration Portal Web site. This site enables you to explore HP Product Solutions to meet your business needs, includes a full list of Integrations between HP Products, as well as a listing of ITIL Processes. The URL for this Web site is

<http://h20230.www2.hp.com/sc/solutions/index.jsp>

Contents

Contents	3
Cloud Optimization Content Acceleration Pack	4
% of Server Utilization KPI	12
Expense for Services KPI	14
We appreciate your feedback!	16

Cloud Optimization Content Acceleration Pack

The purpose of this Cloud Content Acceleration Pack (CAP) is to provide a set of items (Dashboard pages, Scorecards, Contexts, KPIs, and more) that automatically gathers information from across your enterprise to build key performance indicators (KPIs) related to Cloud-related issues. The CAP includes the Cloud Financials and Cloud Performance Perspectives. The CAP provides broad and deep insight that should enable you to optimize resource provider relationships, increase service profitability, improve financial performance, improve data privacy, improve elasticity, accelerate agility, improve reliability, and increase compliance.

This CAP provides a 360 degree Cloud view.

Section navigation: ● ["Learn More" below](#) ● ["Tasks" on page 11](#) ● ["Cloud Optimization Content Acceleration Pack" above](#)

Learn More

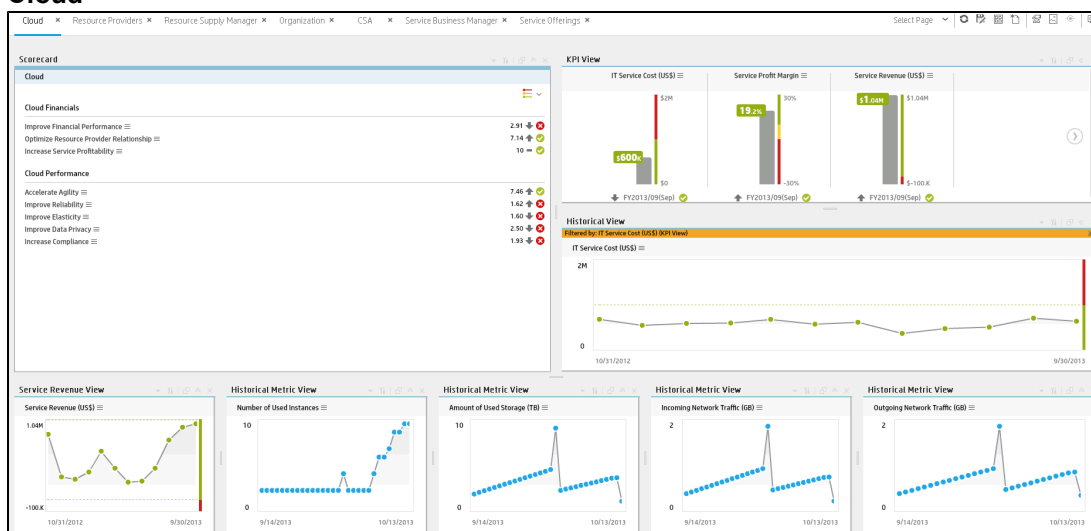
The CAP includes the following pages, scorecards, KPIs and Metrics, and data files (.CSV tables).

The cross-references in the Out-of-the-box Business Contexts column are to the relevant *IT Executive Scorecard Content Reference Guides*.

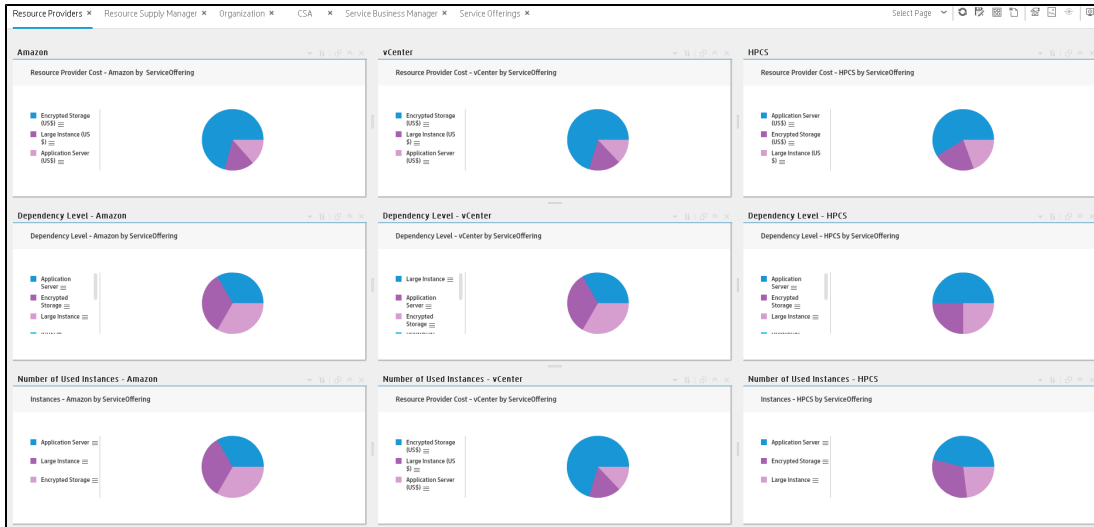
The cross-references in the KPIs and Metrics column are to the *IT Executive Scorecard KPIs, Metrics, and Data Lineage Reference Guide*.

Pages

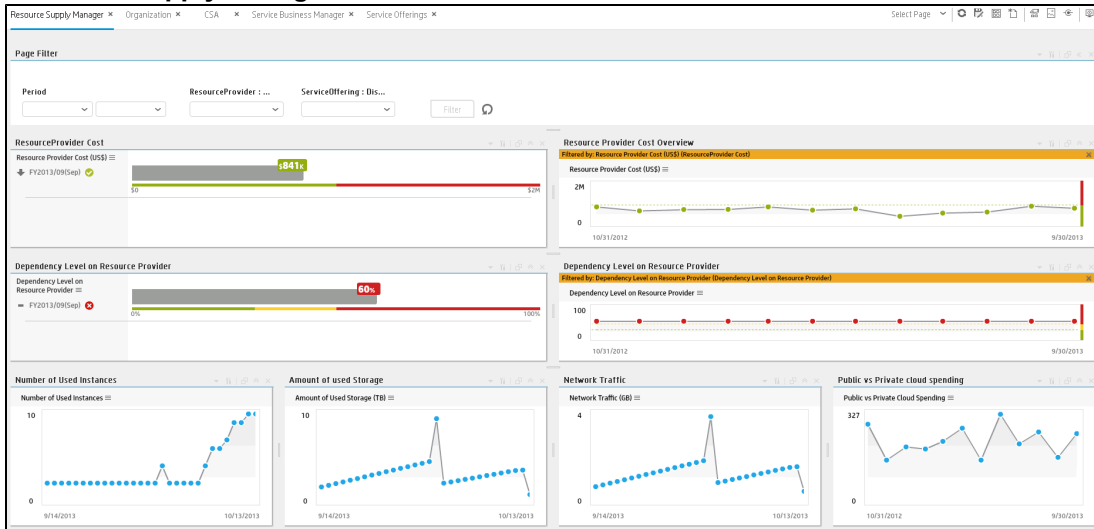
- **Cloud**



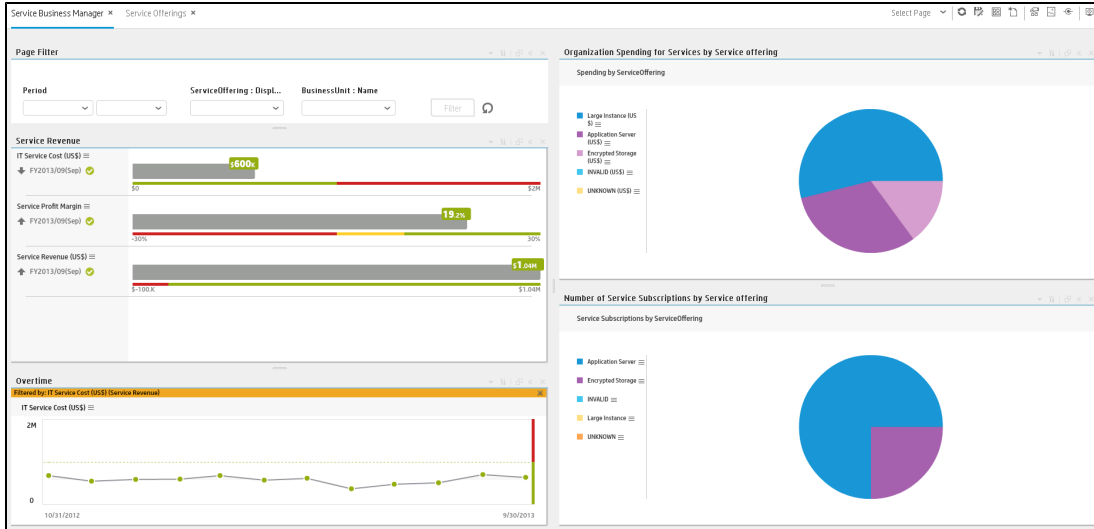
● **Resource Providers**



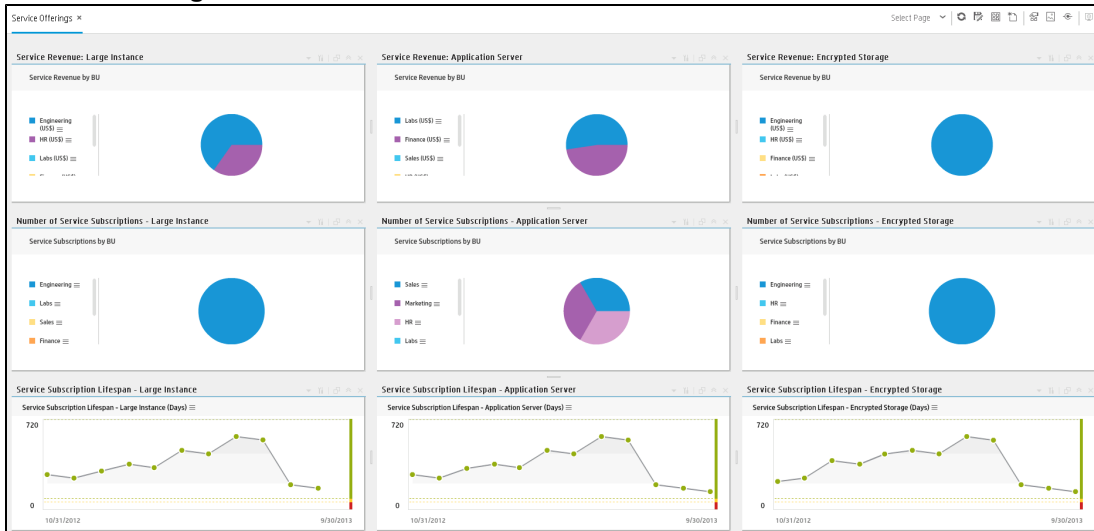
● **Resource Supply Manager**



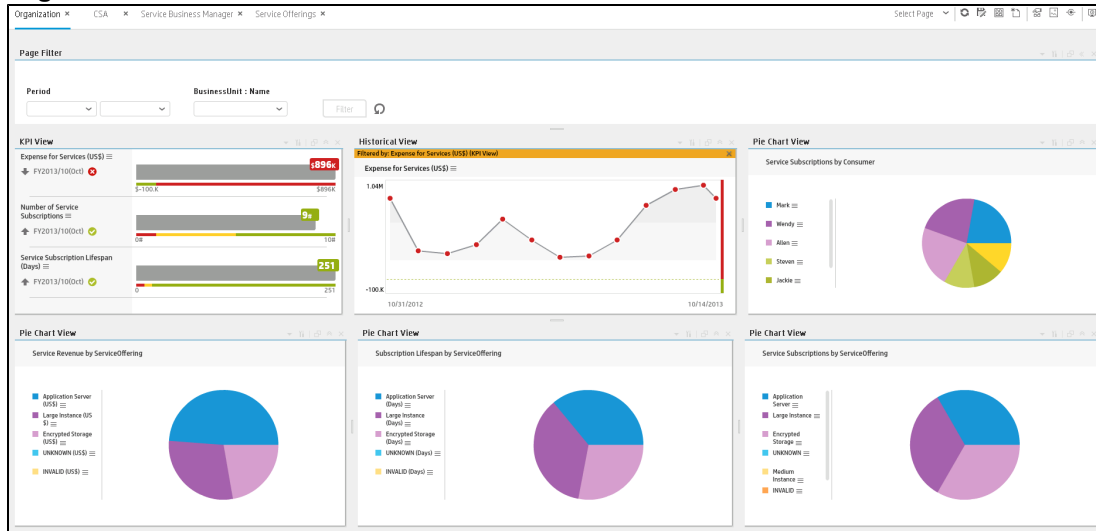
• **Service Business Manager**



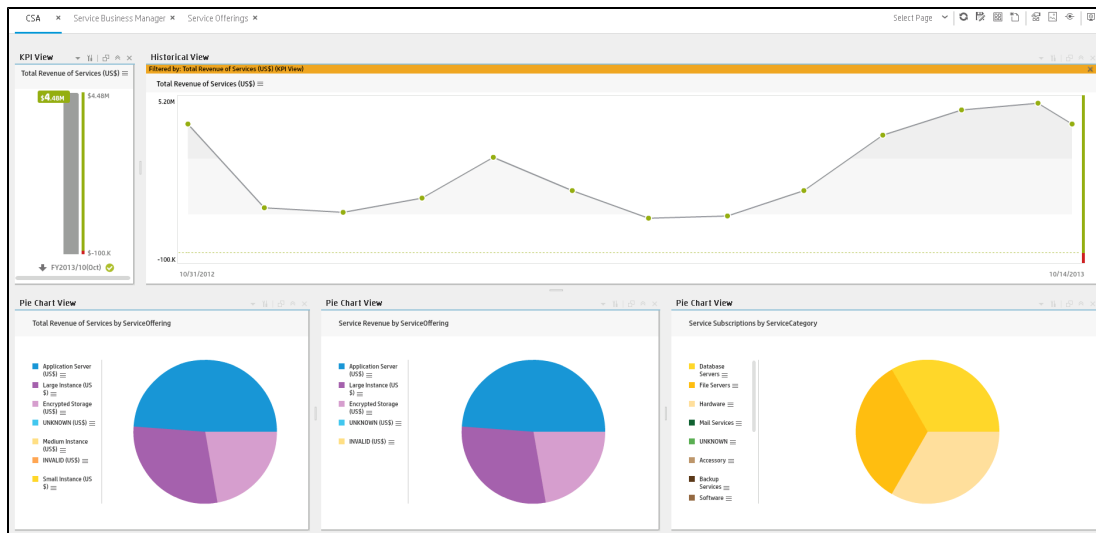
• **Service Offerings**



• **Organization**



• **CSA**



Scorecards

- Cloud

Out-of-the-box Business Contexts:

- ApplicationPerformanceDemo (similar to [ApplicationPerformance Context](#))
- AssetManagementDemo (similar to [Asset Management Context](#))
- CloudOptimizationDemo (similar to [CloudOptimization Context](#))
- DataProtectionDemo (similar to [DataProtection Context](#))

- [FinancialManagementDemo](#) (similar to [Financial Management Context](#))
- [NetworkNodeManagerDemo](#) (similar to [NetworkNodeManager Context](#))
- [PolicyComplianceDemo](#) (similar to [PolicyCompliance Context](#))
- [PolicyComplianceStatusDemo](#) (similar to [PolicyComplianceStatus Context](#))
- [PolicyRemediationDemo](#) (similar to [PolicyRemediation Context](#))
- [ProjectPortfolioManagementDemo](#) (similar to [Project Portfolio Management \(PPM\) Context](#))
- [SLMDemo](#) (similar to [Service Level Management Context](#))

KPIs:

- [Average Time to Deploy an Application KPI](#)
- [Average Time to Provision a Node KPI](#)
- [Average Cost of IT Delivery Per Customer KPI](#)
- [Average Delivery Time of New Products or Services KPI](#)
- [Average Time to Procure Hardware KPI](#)
- [Dependency Level on Resource Provider KPI](#)
- [Dependency Level on Resource Provider - Amazon](#) (similar to [Dependency Level on Resource Provider KPI](#) filtered for Amazon)
- [Dependency Level on Resource Provider - HPCS](#) (similar to [Dependency Level on Resource Provider KPI](#) filtered for HPCS)
- [Dependency Level on Resource Provider - vCenter](#) (similar to [Dependency Level on Resource Provider KPI](#) filtered for vCenter)
- ["Expense for Services KPI" on page 14](#)
- [Frequency of Policy Checks KPI](#)
- [IT Service Cost KPI](#)
- [Mean Time to Recover from Non-Compliance KPI](#)
- [Number of Servers with Non-Encrypted Backup Data KPI](#)
- [Number of Service Subscriptions KPI](#)
- [Number of Used Instances KPI](#)

- Number of Used Instances - Amazon (similar to [Number of Used Instances KPI](#) filtered for Amazon)
- Number of Used Instances - HPCS (similar to [Number of Used Instances KPI](#) filtered for HPCS)
- Number of Used Instances - vCenter (similar to [Number of Used Instances KPI](#) filtered for vCenter)
- [% of Monitored Applications KPI](#)
- [% of Change in Assets Cost KPI](#)
- [% of Managed Nodes KPI](#)
- [% of Met SLAs](#)
- % of Network utilization (similar to [% of Utilization of Network Devices KPI](#))
- [% of Nodes with Compliance Issues KPI](#)
- [% of Non-Encrypted Traffic KPI](#)
- [% of OpEx KPI](#)
- [% of Server Utilization KPI](#)
- [% of Storage Utilization KPI](#)
- [Public vs Private Cloud Spending KPI](#)
- [Resource Provider Cost KPI](#)
- Resource Provider Cost - Amazon (similar to [Resource Provider Cost KPI](#) filtered for Amazon)
- Resource Provider Cost - HPCS(similar to [Resource Provider Cost KPI](#) filtered for CSA)
- Resource Provider Cost - vCenter(similar to [Resource Provider Cost KPI](#) filtered for vCenter)
- [Service Profit Margin KPI](#)
- [Service Revenue KPI](#)
- Service Revenue - Application Server (similar to [Service Revenue KPI](#) filtered for Application Server)
- Service Revenue - Encrypted Storage (similar to [Service Revenue KPI](#) filtered for Encrypted Storage)
- Service Revenue - Large Instance (similar to [Service Revenue KPI](#) filtered for Large Instance)

- [Service Subscription Lifespan KPI](#)
- Service Subscription Lifespan - Application Server (similar to [Service Subscription Lifespan KPI](#) filtered for Application Server)
- Service Subscription Lifespan - Encrypted Storage (similar to [Service Subscription Lifespan KPI](#) filtered for Encrypted Storage)
- Service Subscription Lifespan - Large Instance (similar to [Service Subscription Lifespan KPI](#) filtered for Large Instance)
- [Total Cost of Resource Providers KPI](#)
- Total Cost of Resource Providers - Private (similar to [Total Cost of Resource Providers KPI](#) filtered for Private)
- Total Cost of Resource Providers - Public (similar to [Total Cost of Resource Providers KPI](#) filtered for Public)
- [Total IT Service Cost KPI](#)
- [Total Revenue of Services KPI](#)

Metrics:

- [Amount of Used Storage Metric](#)
- [Incoming Network Traffic Metric](#)
- [Network Traffic Metric](#)
- [Number of Service Subscriptions KPI](#)
- Number of Service Subscriptions - Application Server (similar to [Number of Service Subscriptions KPI](#) filtered for Application Server)
- Number of Service Subscriptions - Encrypted Storage (similar to [Number of Service Subscriptions KPI](#) filtered for Encrypted Storage)
- Number of Service Subscriptions - Large Instance (similar to [Number of Service Subscriptions KPI](#) filtered for Large Instance)
- [Organization Spending for Services Metric](#)
- [Outgoing Network Traffic Metric](#)
- [Service Profit Margin by Organization Metric](#)

Data Files (.CSV Tables)

The data files or .CSV tables are included in the CAPs themselves and provide the context and

data needed by the CAP to show data in the relevant Dashboard page. For details, see [Data Files \(.CSV Tables\)](#) in the *IT Executive Scorecard Administrator Guide*.

Structure

Scorecard: Cloud

- **Perspective:** Cloud Financials
 - **Objective:** Optimize Resource Provider Relationship
 - **Objective:** Increase Service Profitability
 - **Objective:** Increase Financial Performance
- **Perspective:** Cloud Performance
 - **Objective:** Improve Data Privacy
 - **Objective:** Improve Elasticity
 - **Objective:** Accelerate Agility
 - **Objective:** Improve Reliability
 - **Objective:** Increase Compliance

Tasks

This section includes:


["Upload and manage the Content Acceleration Pack" below](#)

["View the Cloud CAP-related Dashboard page" below](#)

Upload and manage the Content Acceleration Pack

For details, see [Content Acceleration Pack](#) in the *IT Executive Scorecard Administrator Guide*.


View the Cloud CAP-related Dashboard page

1. In the Executive Scorecard application, close all the tabs. The Dashboard is displayed.
2. Click the **Cloud** tab. If it is not displayed, click the **Page Gallery**  button in the Dashboard toolbar, double-click the **Cloud** icon and close the Page Gallery dialog box.

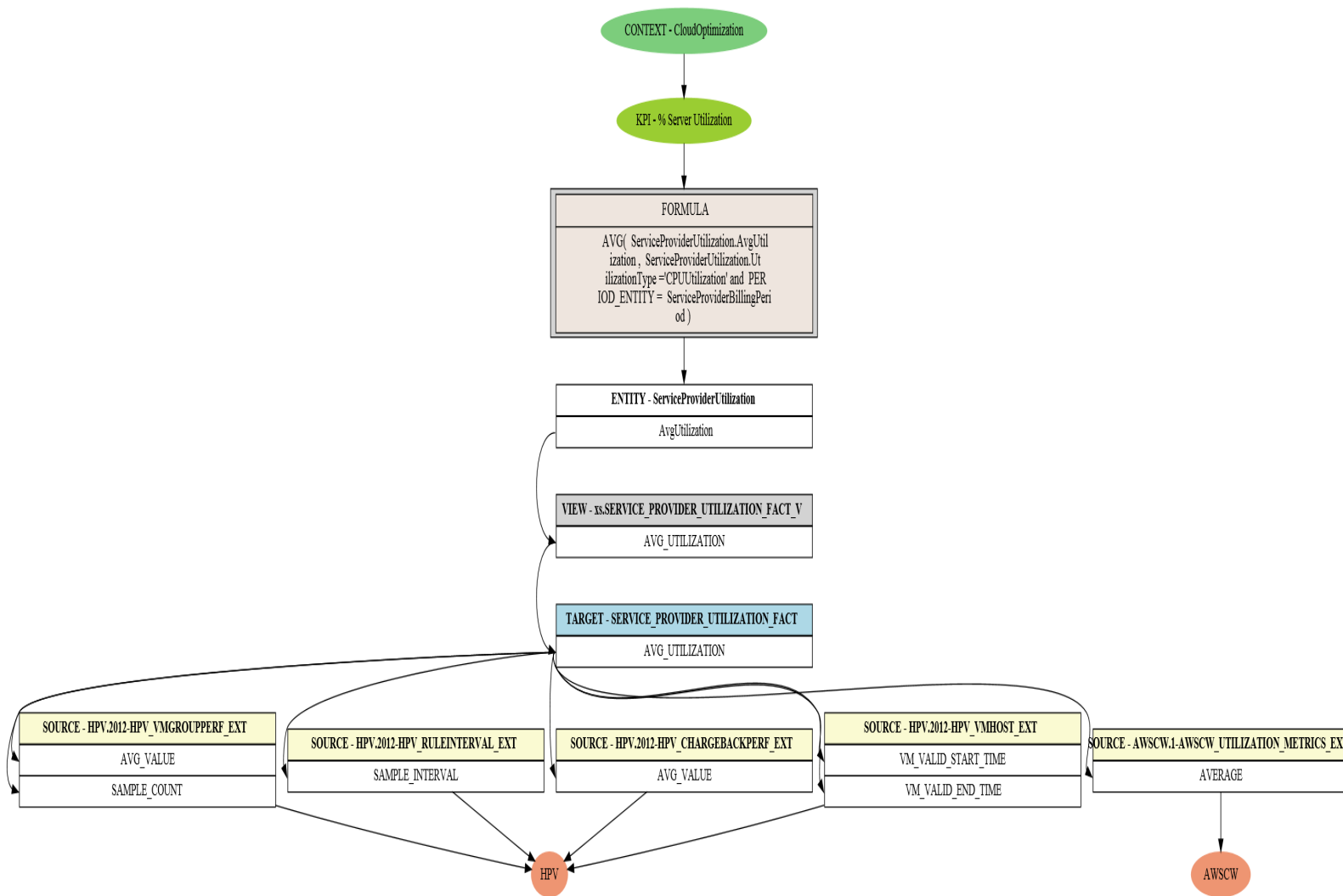
Reference

The following KPIs are used only in the CloudOptimization CAP.

% of Server Utilization KPI

Component Type	KPI
Business Questions	Make sure our resources are utilized efficiently.
Business Objective	Stewardship of IT Investment
Description	The average of percentages of servers CPU utilization at instance level.
Context	CloudOptimization
Data source	AWSCW
Formula	AVG(ServiceProviderUtilization.AvgUtilization , ServiceProviderUtilization.UtilizationType = 'CPUUtilization' and PERIOD_ENTITY = ServiceProviderBillingPeriod)
KPI Formula Filter	N/A
Unit Type	%
Time Period	Daily
Direction	Centralize
Thresholds	
Release	9.41

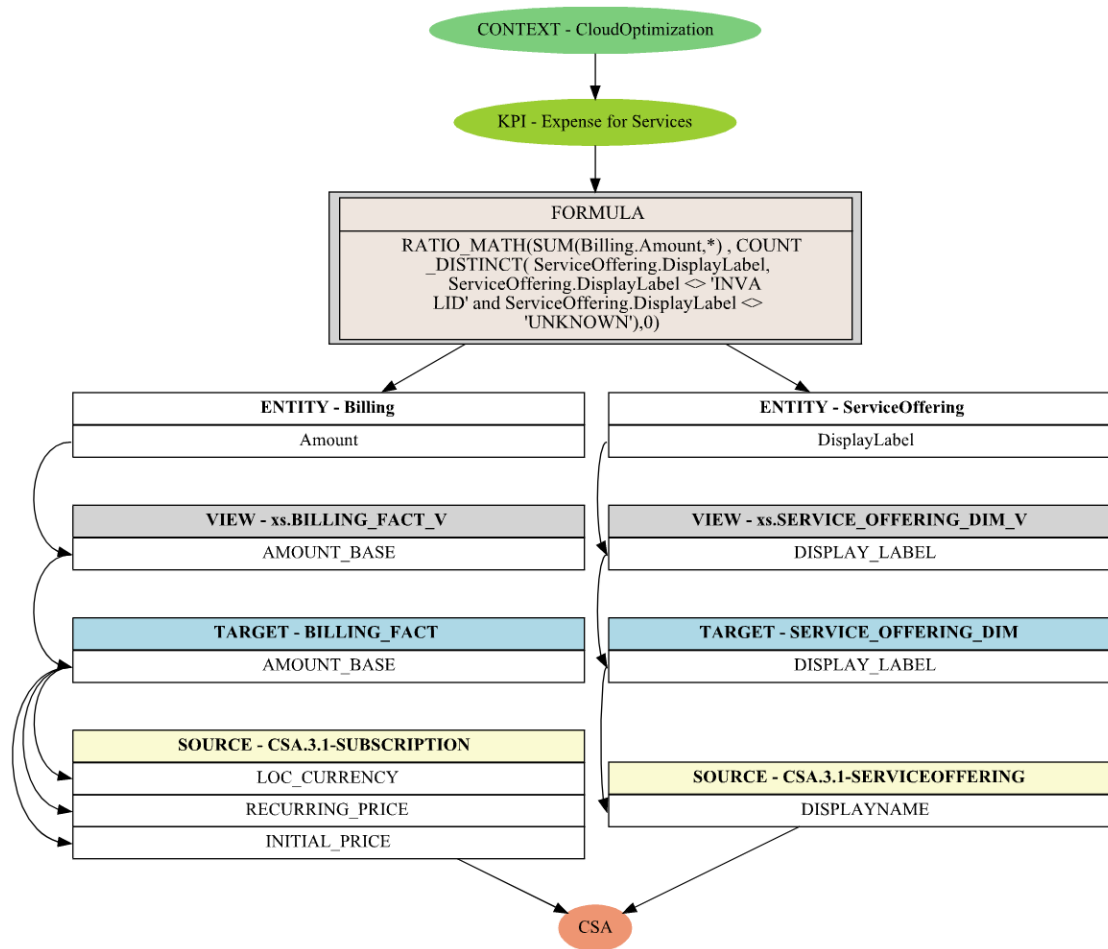
Data Lineage



Expense for Services KPI

Component Type	KPI	
Business Questions	Track the expense of services and make sure it is aligned with the predicted expenses	
Business Objective	Increase Service Profitability	
Description	The average expense of services which the organization consume	
Context	CloudOptimization	
Data source	CSA	
Formula	RATIO_MATH(SUM(Billing.Amount, PERIOD_ENTITY = BillingPeriod) , COUNT_DISTINCT(ServiceOffering.DisplayLabel, ServiceOffering.DisplayLabel <> 'INVALID' and ServiceOffering.DisplayLabel <> 'UNKNOWN'),0)	
KPI Formula Filter	N/A	
Unit Type	US \$	
Time Period	Monthly	
Direction	Minimize	
Thresholds	- 99999 to 0	0 to 99999
Release	9.41	

Data Lineage



We appreciate your feedback!

If you have comments about this document, you can [contact the documentation team](#) by email. If an email client is configured on this system, click the link above and an email window opens with the following information in the subject line:

Feedback on Cloud Optimization Content Acceleration Pack Guide (IT Executive Scorecard 9.41)

Just add your feedback to the email and click send.

If no email client is available, copy the information above to a new message in a web mail client, and send your feedback to SW-Doc@hp.com.

