

HP IT Executive Scorecard

For the Windows® operating system

Software Version: 9.41

Security Enterprise Architecture Content Acceleration Pack Guide

Document Release Date: December 2013

Software Release Date: December 2013



Legal Notices

Warranty

The only warranties for HP products and services are set forth in the express warranty statements accompanying such products and services. Nothing herein should be construed as constituting an additional warranty. HP shall not be liable for technical or editorial errors or omissions contained herein.

The information contained herein is subject to change without notice.

Restricted Rights Legend

Confidential computer software. Valid license from HP required for possession, use or copying. Consistent with FAR 12.211 and 12.212, Commercial Computer Software, Computer Software Documentation, and Technical Data for Commercial Items are licensed to the U.S. Government under vendor's standard commercial license.

Copyright Notice

© Copyright 2011-2013 Hewlett-Packard Development Company, L.P.

Trademark Notices

- Adobe® and Acrobat® are trademarks of Adobe Systems Incorporated.
- AMD and the AMD Arrow symbol are trademarks of Advanced Micro Devices, Inc.
- Google™ and Google Maps™ are trademarks of Google Inc.
- Intel®, Itanium®, Pentium®, and Intel® Xeon® are trademarks of Intel Corporation in the U.S. and other countries.
- Java is a registered trademark of Oracle and/or its affiliates.
- Microsoft®, Windows®, Windows NT®, Windows® XP, Windows Vista® and SQL Server® are U.S. registered trademarks of Microsoft Corporation.
- Oracle is a registered trademark of Oracle Corporation and/or its affiliates.

Documentation Updates

The title page of this document contains the following identifying information:

- Software Version number, which indicates the software version.
- Document Release Date, which changes each time the document is updated.
- Software Release Date, which indicates the release date of this version of the software.

To check for recent updates or to verify that you are using the most recent edition of a document, go to: <http://h20230.www2.hp.com/selfsolve/manuals>

This site requires that you register for an HP Passport and sign in. To register for an HP Passport ID, go to: <http://h20229.www2.hp.com/passport-registration.html>

Or click the **New users - please register** link on the HP Passport login page.

You will also receive updated or new editions if you subscribe to the appropriate product support service. Contact your HP sales representative for details.

Support

Visit the HP Software Support Online web site at: <http://www.hp.com/go/hpsupport>

This web site provides contact information and details about the products, services, and support that HP Software offers.

HP Software online support provides customer self-solve capabilities. It provides a fast and efficient way to access interactive technical support tools needed to manage your business. As a valued support customer, you can benefit by using the support web site to:

- Search for knowledge documents of interest
- Submit and track support cases and enhancement requests
- Download software patches
- Manage support contracts
- Look up HP support contacts
- Review information about available services
- Enter into discussions with other software customers
- Research and register for software training

Most of the support areas require that you register as an HP Passport user and sign in. Many also require a support contract. To register for an HP Passport ID, go to:

<http://h20229.www2.hp.com/passport-registration.html>

To find more information about access levels, go to:

http://h20230.www2.hp.com/new_access_levels.jsp

HP Software Solutions Now accesses the HPSW Solution and Integration Portal Web site. This site enables you to explore HP Product Solutions to meet your business needs, includes a full list of Integrations between HP Products, as well as a listing of ITIL Processes. The URL for this Web site is

<http://h20230.www2.hp.com/sc/solutions/index.jsp>

About this PDF Version of Online Help

This document is a PDF version of the online help. This PDF file is provided so you can easily print multiple topics from the help information or read the online help in PDF format. Because this content was originally created to be viewed as online help in a web browser, some topics may not be formatted properly. Some interactive topics may not be present in this PDF version. Those topics can be successfully printed from within the online help.

Contents

Contents	4
Security Enterprise Architecture Content Acceleration Pack	5
We appreciate your feedback!	9

Security Enterprise Architecture Content Acceleration Pack

The purpose of the Security Enterprise Architecture Content Acceleration Pack (CAP) is to provide a set of items (Dashboard pages, Scorecards, Contexts, KPIs, and more) that automatically gathers information from across your enterprise to build key performance indicators (KPIs) related to Security Enterprise Architecture-related issues. The CAP provides broad and deep insight that should enable you to:

- Increase information protection
- Increase compliance
- Justify security investment
- Reduce Risk Reactive
- Reduce Risk Proactive

The use case for this Content Acceleration Pack is to provide a 360 Degree Security View.

Section navigation: • ["Learn More" below](#) • ["Tasks" on page 7](#) • ["Security Enterprise Architecture Content Acceleration Pack" above](#)

Learn More

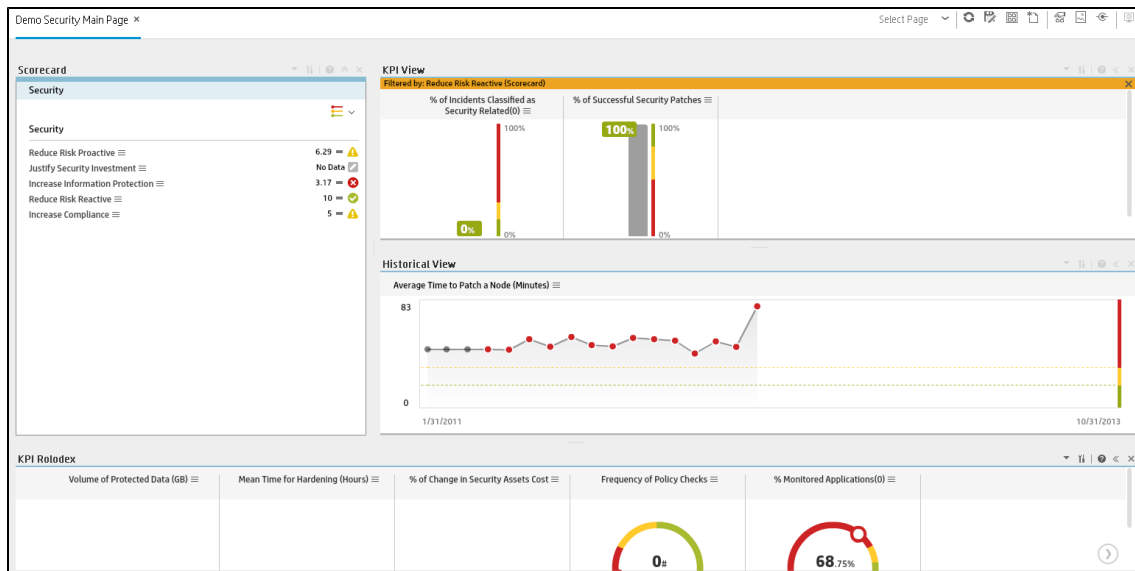
Content Acceleration Packs (CAPs) are ready-to-import packages that include Dashboard pages that display Scorecards and components, KPIs, Metrics, Contexts (universes), data (.CSV files), and documentation for the CAP.

CAPs describe typical stories that show how the correct implementation of Executive Scorecard drives Performance Improvement and Cost Reduction for the IT organization.

CAPs demonstrate Executive Scorecard capabilities, and helps you add basic elements that can be used to customize your Dashboard.

Pages

Demo Security Main Page



Scorecards

- Security

Out-of-the-box Business Contexts

- ApplicationPerformanceDemo (similar to [ApplicationPerformance Context](#))
- AssetManagementDemo (similar to [Asset Management Context](#))
- DataProtectionDemo (similar to [DataProtection Context](#))
- IncidentManagementDemo (similar to [Incident Management Context](#))
- PolicyComplianceDemo (similar to [PolicyCompliance Context](#))
- PolicyComplianceStatusDemo (similar to [PolicyComplianceStatus Context](#))
- PolicyRemediationDemo (similar to [PolicyRemediation Context](#))

KPIs

- [% of Monitored Applications KPI](#)
- % of Changes in Security Assets Costs (similar to [% of Change in Assets Cost KPI](#) but with an additional filter related to security issues)

- [% of Incidents Classified as Security Related KPI](#)
- [% of Nodes with Compliance Issues KPI](#)
- [% of Non-Encrypted Traffic KPI](#)
- [% of Nodes with Compliance Issues KPI](#)
- [% of Successful Security Patches](#)
(similar to [% of Successful Patches KPI](#) but with an additional filter related to security issues)
- [Average Time to Patch a Node KPI](#)
- [Frequency of Policy Checks KPI](#)
- [Mean Time for Hardening](#)
- [Number of Servers with Non-Encrypted Backup Data KPI](#)
- [Ratio of Security Related Nodes KPI](#)
- [Volume of Protected Data KPI](#)

Data Files (CSV Tables)

The data files or .CSV tables are included in the CAPs themselves and provide the context and data needed by the CAP to show data in the relevant Dashboard page. For details, see [Data Files \(.CSV Tables\)](#) in the *IT Executive Scorecard Administrator Guide*.

Structure

Scorecard: Security

- **Perspective:** Increase Compliance
 - **Objective:** Reduce Risk Proactive
 - **Objective:** Increase Information Protection
 - **Objective:** Reduce Risk Reactive
 - **Objective:** Justify Security Investment

Tasks

This section includes:


["Upload and manage the Content Acceleration Pack" on the next page](#)

["View the Security CAP-related Dashboard page" on the next page](#)

Upload and manage the Content Acceleration Pack

For details, see [Content Acceleration Pack](#) in the *IT Executive Scorecard Administrator Guide*.

View the Security CAP-related Dashboard page

1. In the Executive Scorecard application, close all the tabs. The Dashboard is displayed.
2. Click the **Demo Security Main Page** tab. If it is not displayed, click the **Page Gallery**  button in the Dashboard toolbar, double-click the **Demo Security Main Page** icon and close the Page Gallery dialog box.

We appreciate your feedback!

If you have comments about this document, you can [contact the documentation team](#) by email. If an email client is configured on this system, click the link above and an email window opens with the following information in the subject line:

Feedback on Security Enterprise Architecture Content Acceleration Pack Guide (IT Executive Scorecard 9.41)

Just add your feedback to the email and click send.

If no email client is available, copy the information above to a new message in a web mail client, and send your feedback to SW-Doc@hp.com.

