

HP Anywhere IDE

Windows

Software Version: 10.10

Installation Guide (IntelliJ IDEA)

Document Release Date: December 2013

Software Release Date: December 2013



Legal Notices

Warranty

The only warranties for HP products and services are set forth in the express warranty statements accompanying such products and services. Nothing herein should be construed as constituting an additional warranty. HP shall not be liable for technical or editorial errors or omissions contained herein.

The information contained herein is subject to change without notice.

Restricted Rights Legend

Confidential computer software. Valid license from HP required for possession, use or copying. Consistent with FAR 12.211 and 12.212, Commercial Computer Software, Computer Software Documentation, and Technical Data for Commercial Items are licensed to the U.S. Government under vendor's standard commercial license.

Copyright Notice

© Copyright 2012 - 2013 Hewlett-Packard Development Company, L.P.

Trademark Notices

Adobe® is a trademark of Adobe Systems Incorporated.

Microsoft® and Windows® are U.S. registered trademarks of Microsoft Corporation.

Oracle and Java are registered trademarks of Oracle and/or its affiliates.

Documentation Updates

The title page of this document contains the following identifying information:

- Software Version number, which indicates the software version.
- Document Release Date, which changes each time the document is updated.
- Software Release Date, which indicates the release date of this version of the software.

To check for recent updates or to verify that you are using the most recent edition of a document, go to:

<http://h20230.www2.hp.com/selfsolve/manuals>

This site requires that you register for an HP Passport and sign in. To register for an HP Passport ID, go to:

<http://h20229.www2.hp.com/passport-registration.html>

Or click the **New users - please register** link on the HP Passport login page.

You will also receive updated or new editions if you subscribe to the appropriate product support service. Contact your HP sales representative for details.

Support

Visit the HP Software Support Online web site at:

<http://www.hp.com/go/hpsoftwaresupport>

This web site provides contact information and details about the products, services, and support that HP Software offers.

HP Software online support provides customer self-solve capabilities. It provides a fast and efficient way to access interactive technical support tools needed to manage your business. As a valued support customer, you can benefit by using the support web site to:

- Search for knowledge documents of interest
- Submit and track support cases and enhancement requests
- Download software patches
- Manage support contracts
- Look up HP support contacts
- Review information about available services
- Enter into discussions with other software customers
- Research and register for software training

Most of the support areas require that you register as an HP Passport user and sign in. Many also require a support contract. To register for an HP Passport ID, go to:

<http://h20229.www2.hp.com/passport-registration.html>

To find more information about access levels, go to:

http://h20230.www2.hp.com/new_access_levels.jsp

Contents

Installation Guide (IntelliJ IDEA)	1
Contents	6
Hardware and Software Requirements for HP Anywhere IDE (IntelliJ IDEA)	7
How to Install HP Anywhere IDE (IntelliJ IDEA)	7
How to Set IntelliJ IDEA to Use the Plugin for HP Anywhere IDE (IntelliJ IDEA)	12

Hardware and Software Requirements for HP Anywhere IDE (IntelliJ IDEA)

Before installing HP Anywhere IDE, make sure that your system meets the following minimum requirements:

Supported Environments

- Windows 7 64-bit or Windows 2008 64-bit
- Required Memory: 4 GB
- Required Disk Space: 4 GB
- Processor: 2 X 3 GHz CPU
- IntelliJ IDEA 11.1.2 or later
- JDK 1.7

How to Install HP Anywhere IDE (IntelliJ IDEA)

The HP Anywhere IDE installation installs an HP Anywhere-specific version of Chrome, Maven, an HP Anywhere server , and a plugin for IntelliJ IDEA.

To install HP Anywhere IDE (IntelliJ IDEA):

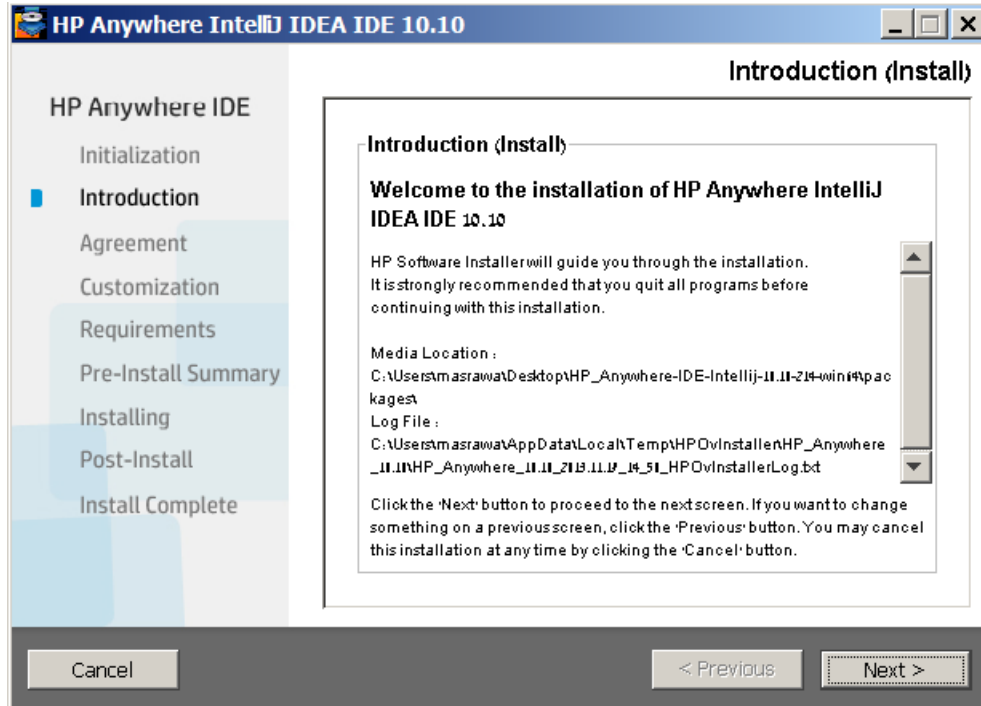
1. Prerequisites:

- Make sure that your system meets the [minimum requirements](#). For details, see "[Hardware and Software Requirements for HP Anywhere IDE \(IntelliJ IDEA\)](#)" above.
- Uninstall any existing versions of HP Anywhere or HP Anywhere IDE from your computer. You can do this from Add/Remove Programs or from the Start menu.

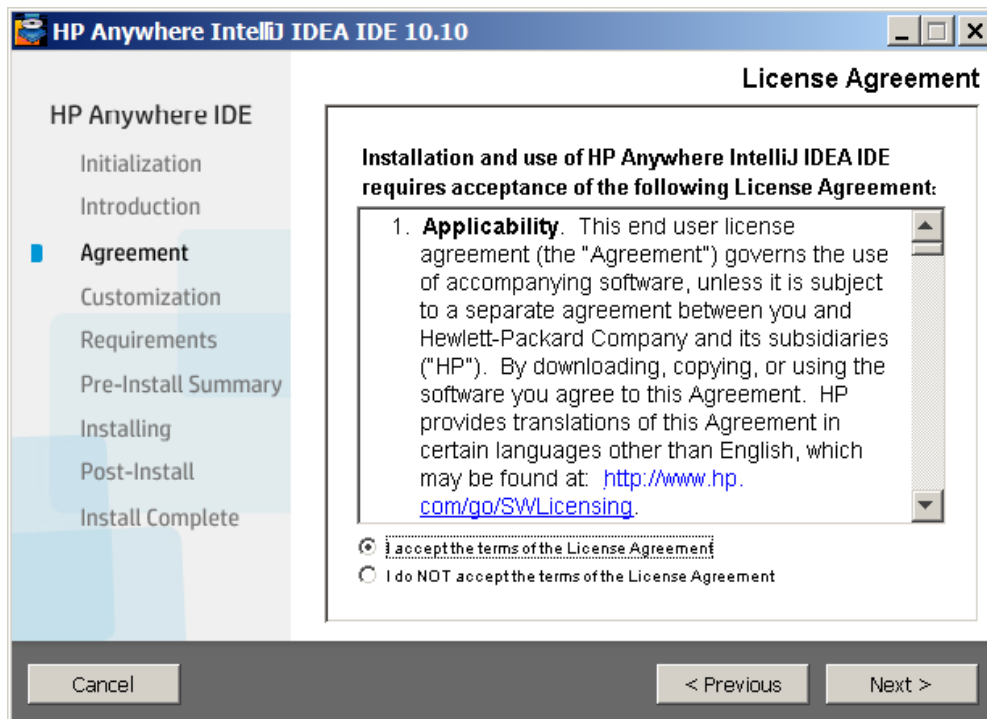
(HP Anywhere IDE includes the latest version of theHP Anywhere server, so there is no need to reinstall theHP Anywhere server later.)

2. Extract the **HP_Anywhere-IDE-IntelliJ--<build_number>-win64.zip** file to your local computer.

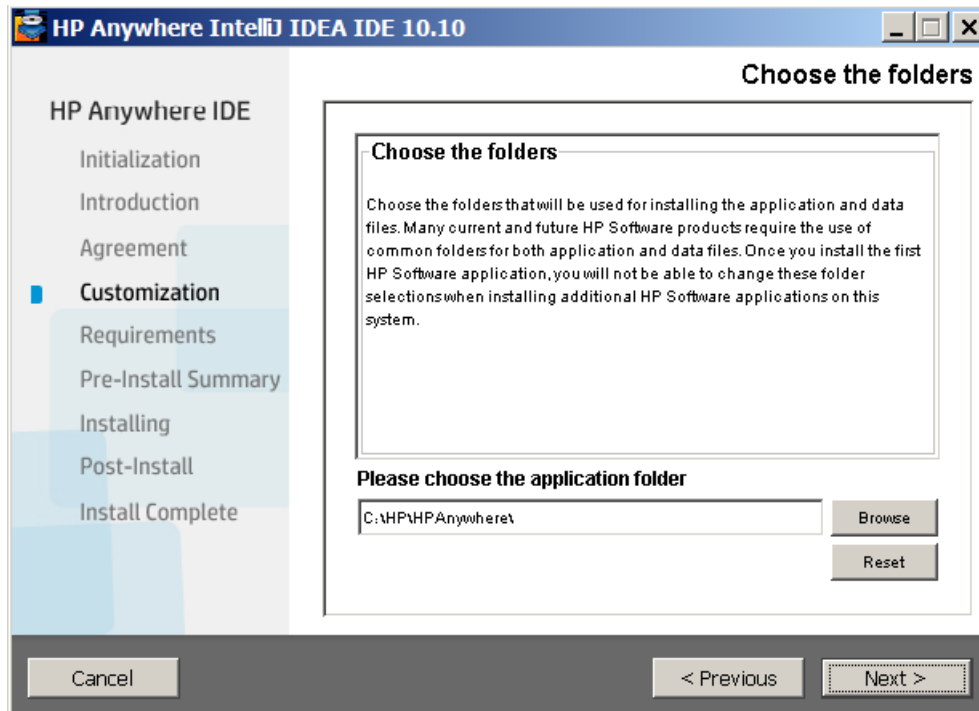
3. Run **HP_Anywhere_10.10_setup.exe**. The HP Anywhere IDE 10.10 installation wizard opens, and, after the preliminary configurations are completed, the Introduction (Install) screen opens.



4. Click **Next**. The License Agreement screen opens.

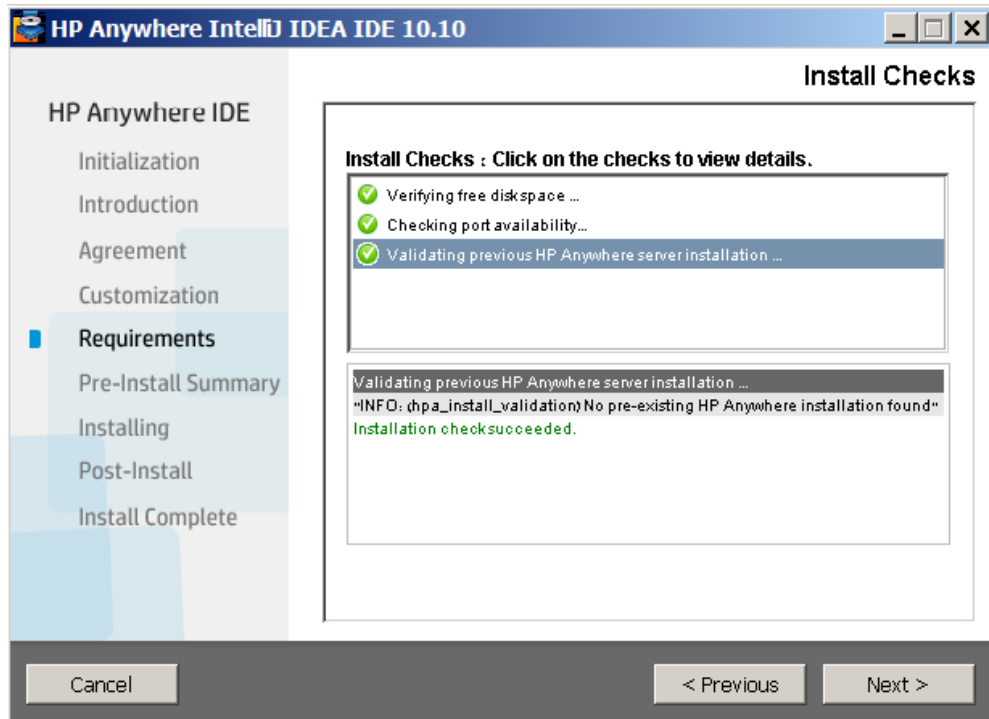


5. Select **I accept the terms of the License Agreement** and click **Next**. The Choose the folders screen opens.

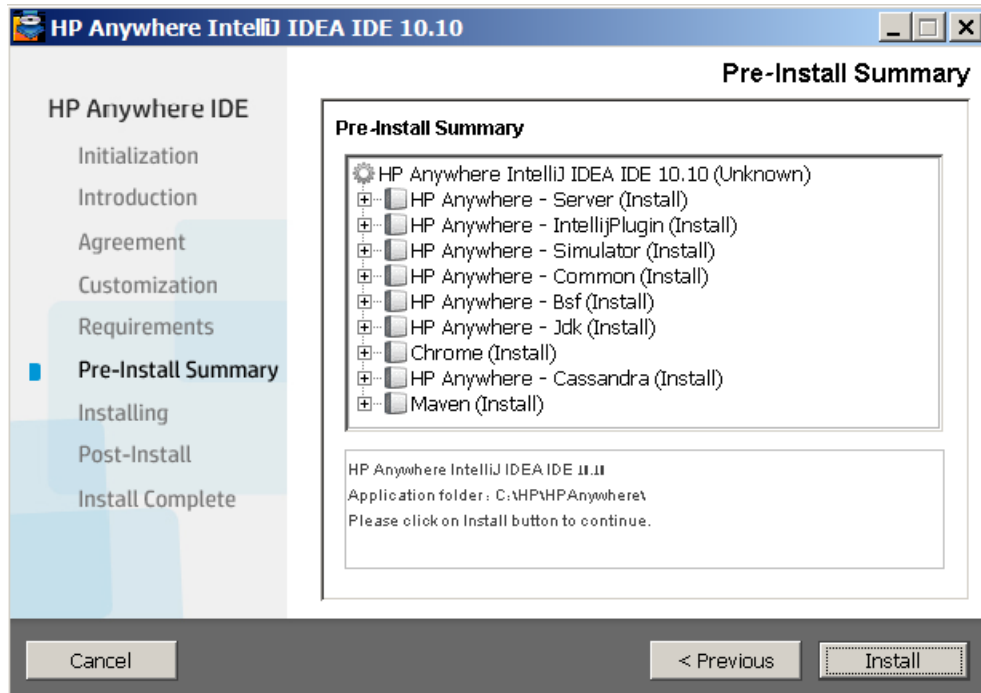


- a. You can accept the default installation folder location for HP Software application and data files, or specify another location. The installation folder you specify here becomes the common installation folder for many future installations of HP software on this computer.
 - b. You must specify a folder on a mapped drive (not a UNC path). If the destination folder does not exist, the setup program creates it.
6. Click **Next**. The Install Checks screen opens and verifies that the computer has sufficient free disk space, that the required ports are available, and that HP Anywhere is not installed.

Note: If HP Anywhere is already installed, a message displays informing you that the installation will upgrade to the current version of HP Anywhere.



7. Click **Next**. The Pre-Install Summary screen opens.



8. Click **Install**. The installation begins. This may take a few minutes.

After the installation is complete, an Installation Complete screen opens.

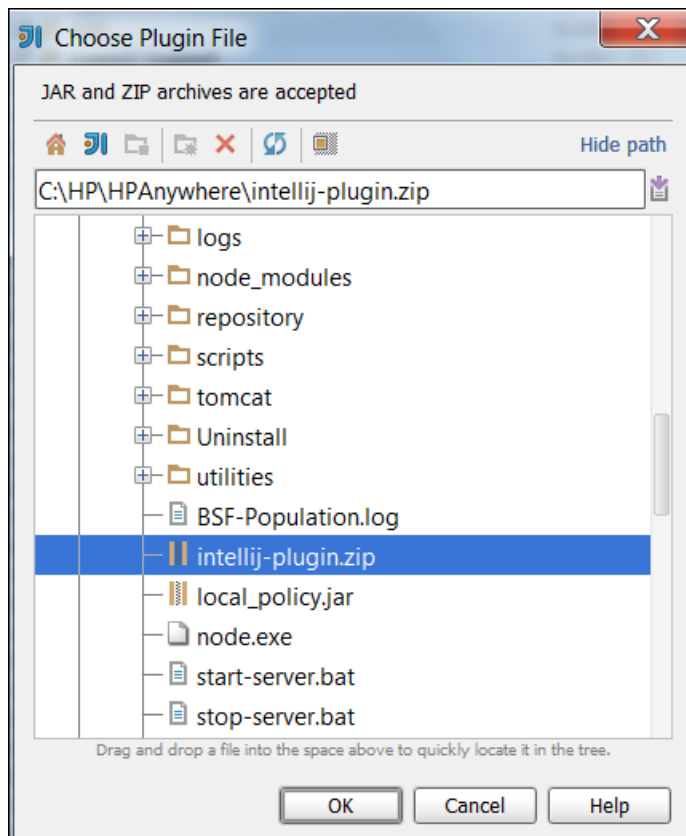
9. Click **Done** to close the installation wizard.

How to Set IntelliJ IDEA to Use the Plugin for HP Anywhere IDE (IntelliJ IDEA)

After you install HP Anywhere IDE on your computer, you need to install the plugin in IntelliJ IDEA.

To install the plugin:

1. Make sure that a supported version of IntelliJ IDEA is installed on your computer. For a list of supported versions, see "[Hardware and Software Requirements for HP Anywhere IDE \(IntelliJ IDEA\)](#)" on page 7.
2. Open IntelliJ IDEA and select **File > Settings** to open the Settings window.
3. In the left pane of the Settings window, click **Plugins** (located in the IDE Settings group).
4. In the Plugins pane, make sure that **Show** is set to **All plugins**. Then click **Install plugin from disk** at the bottom of the pane.
5. In the Choose Plugin File dialog box, browse to the installation folder, select **intellij-plugin.zip** and click **OK**. For example:



6. Close and reopen HP Anywhere IDE (IntelliJ IDEA).

