

HP IT Executive Scorecard

For the Windows[®] operating system

Software Version: 9.41

Upgrade Guide

Document Release Date: January 2014

Software Release Date: January 2014



Legal Notices

Warranty

The only warranties for HP products and services are set forth in the express warranty statements accompanying such products and services. Nothing herein should be construed as constituting an additional warranty. HP shall not be liable for technical or editorial errors or omissions contained herein.

The information contained herein is subject to change without notice.

Restricted Rights Legend

Confidential computer software. Valid license from HP required for possession, use or copying. Consistent with FAR 12.211 and 12.212, Commercial Computer Software, Computer Software Documentation, and Technical Data for Commercial Items are licensed to the U.S. Government under vendor's standard commercial license.

Copyright Notice

© Copyright Hewlett-Packard Development Company, L.P.

Trademark Notices

- Adobe® and Acrobat® are trademarks of Adobe Systems Incorporated.
- AMD and the AMD Arrow symbol are trademarks of Advanced Micro Devices, Inc.
- Google™ and Google Maps™ are trademarks of Google Inc.
- Intel®, Itanium®, Pentium®, and Intel® Xeon® are trademarks of Intel Corporation in the U.S. and other countries.
- Java is a registered trademark of Oracle and/or its affiliates.
- Microsoft®, Windows®, Windows NT®, Windows® XP, Windows Vista® and SQL Server® are U.S. registered trademarks of Microsoft Corporation.
- Oracle is a registered trademark of Oracle Corporation and/or its affiliates.

Documentation Updates

The title page of this document contains the following identifying information:

- Software Version number, which indicates the software version.
- Document Release Date, which changes each time the document is updated.
- Software Release Date, which indicates the release date of this version of the software.

To check for recent updates or to verify that you are using the most recent edition of a document, go to: <http://h20230.www2.hp.com/selfsolve/manuals>

This site requires that you register for an HP Passport and sign in. To register for an HP Passport ID, go to: <http://h20229.www2.hp.com/passport-registration.html>

Or click the **New users - please register** link on the HP Passport login page.

You will also receive updated or new editions if you subscribe to the appropriate product support service. Contact your HP sales representative for details.

Support

Visit the HP Software Support Online web site at: <http://www.hp.com/go/hpsoftwaresupport>

This web site provides contact information and details about the products, services, and support that HP Software offers.

HP Software online support provides customer self-solve capabilities. It provides a fast and efficient way to access interactive technical support tools needed to manage your business. As a valued support customer, you can benefit by using the support web site to:

- Search for knowledge documents of interest
- Submit and track support cases and enhancement requests
- Download software patches
- Manage support contracts
- Look up HP support contacts
- Review information about available services
- Enter into discussions with other software customers
- Research and register for software training

Most of the support areas require that you register as an HP Passport user and sign in. Many also require a support contract. To register for an HP Passport ID, go to:

<http://h20229.www2.hp.com/passport-registration.html>

To find more information about access levels, go to:

http://h20230.www2.hp.com/new_access_levels.jsp

HP Software Solutions Now accesses the HPSW Solution and Integration Portal Web site. This site enables you to explore HP Product Solutions to meet your business needs, includes a full list of Integrations between HP Products, as well as a listing of ITIL Processes. The URL for this Web site is

<http://h20230.www2.hp.com/sc/solutions/index.jsp>

Contents

Contents	3
Upgrade	4
Upgrade Steps	5
Prerequisites	5
Backup All Databases	6
Upload Version 9.41	6
Additional Steps	15
Reactivate the Data Sources	15
Disaster Recovery	17
Optional, When Working With a Non-English Language	17
Display the Webi and the Xcelsius Reports	21
Upgrade the 9.40 Content Acceleration Packs (CAPs)	21
Licenses and Permissions	23
LDAP Users	24
Optional - Configure BOE Connections to View Xcelsius KPI Audit and System Health Reports	24
We appreciate your feedback!	51

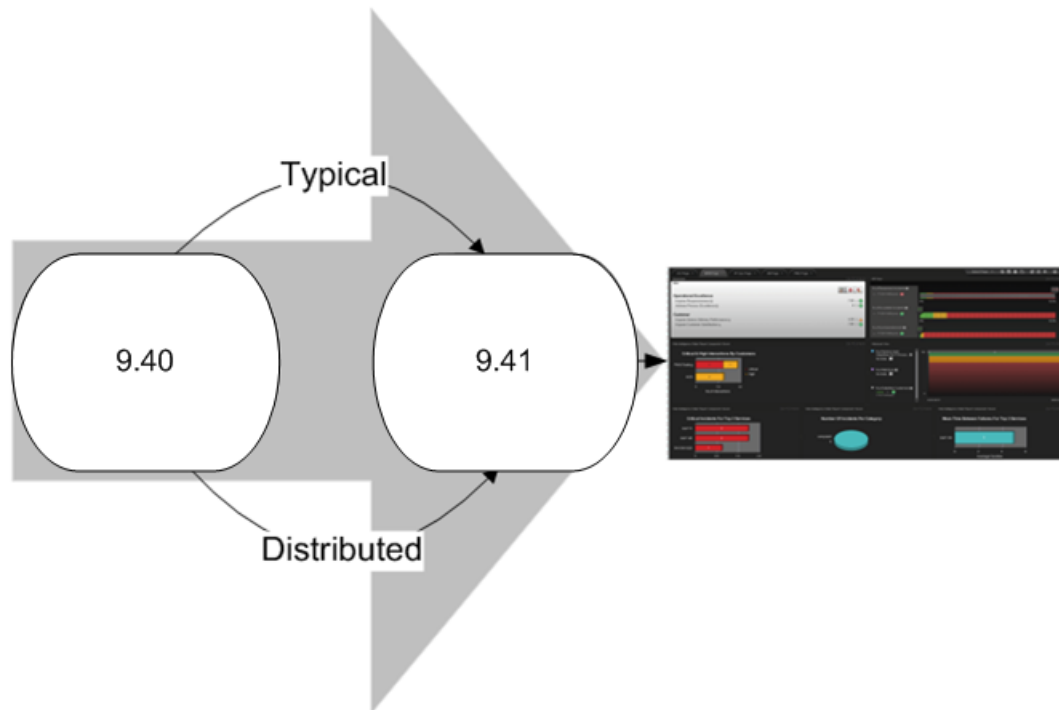
Upgrade

This document explains the upgrade procedure from version 9.40 to Executive Scorecard version 9.41.

To understand what is new in version 9.41, see [What's New in Version 9.41](#) in the *IT Executive Scorecard Release Notes*.

Note: The upgrade path that is currently supported is:
9.40 => 9.41

If you require other upgrade path, contact [HP Software Support Online web site](http://www.hp.com/go/hpssoftwaresupport) (<http://www.hp.com/go/hpssoftwaresupport>).



Important: Upgrading to the new 9.41 instance will disable the existing 9.40 instance.

This section includes the following topics:

- ["Upgrade Steps" on the next page](#)
- ["Additional Steps" on page 15](#)

Upgrade Steps

The upgrade procedure is the same for a typical or distributed environment.

The upgrade procedure uses the following steps:

["Prerequisites" below](#)

["Backup All Databases" on the next page](#)

["Upload Version 9.41" on the next page](#)

["Installation" on page 7](#)

["Upgrade Configuration" on page 11](#)

Prerequisites

1. **Backups:**
 - a. Make sure you have enough disk space to backup all the Data Warehouse databases.
 - b. Back up the Staging and Target databases using SQL Server 2008 Studio.
 - c. Back up the SAP® Business Objects database.
 - d. Back up the SAP BusinessObjects Data Services database for disaster recovery purposes.
 - e. Back up the 9.40 **version.txt** file for disaster recovery purposes.
 - f. Back up the database logons and that each user's status is enabled and not locked.
 - g. Back up the 9.40 **<HPXS folder>\agora\DataWarehouse\ExternalSources** folder before starting the upgrade.
2. **Currently running ETL streams.** Currently running ETL streams will be aborted during the upgrade procedure. You can cancel the upgrade, wait for the completion of the ETL streams execution, and then start the upgrade.
3. **Working with non-English languages.** If the language of one or more of the language packs that you are going to configure uses a non-Latin character set, the management database must be created with the collation for the relevant language.
4. **Browsers.** It is recommended to close all browsers before starting the upgrade.
5. If your upgrade to XS 9.41 was configured with LDAP, copy the external-ldap.properties file from: **<Installation Directory>\agora\glassfish\glassfish\domains\BTOA\config\conf** in the 9.40 environment to the same location in the just upgraded 9.41.

Backup All Databases

Backup the databases in case you need to restore them.

Before performing backup make sure:

- The database server has enough disk space to contain both the backup files and the cloned database.
- The directory structure and drives for the cloned database exist on the server.
- The source database names do not exist in the destination database. If the names do exist, they will be overwritten.

To backup the databases:

Note: Data Warehouse only supports Microsoft SQL Server 2008 R2, therefore the backup process is only supported for this version.

1. Backup the source Staging, Target, Management, and Results databases using SQL Server 2008 Studio. Make sure that the backup file names are unique.

2. **Note:** You must also backup the SAP BusinessObjects Data Services database for disaster recovery purposes.

Upload Version 9.41

Note:

- No data will be lost during the upgrade process. All data that is created during the upgrade process will be retrieved upon completion directly from the data sources.
- If your 9.40 installation was typical (one server), perform the installation below on the server.
- If your 9.40 installation was distributed (more than one server), run the installation below on each server starting with the server where the Data Warehouse is installed and then on the server where the Executive Scorecard module is installed.

Prerequisites

1. Ensure that you have the relevant installation settings required for the installation/upgrade. For details, see the *IT Executive Scorecard Support Matrix*.
2. Close all Windows before you start the installation process.

Installation

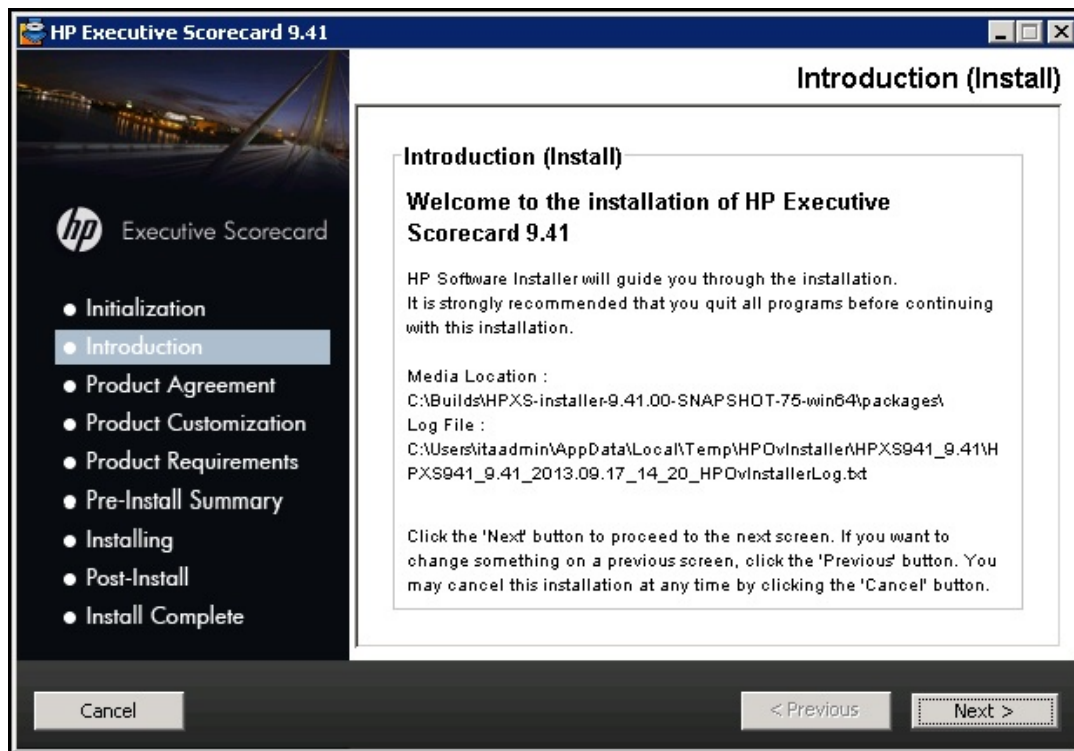
1. Go to the HP Software Support Online web site at: <http://www.hp.com/go/hpsoftwaresupport> site and enter with your HP passport.
 - a. Click **Self-Solve**.
 - b. In **Products**, select **Executive Scorecard**.
 - c. In **Product version**, select **9.41**.
 - d. In **Operating systems**, select **Windows**.
 - e. In **Document types**, select **Patches**.
 - f. Click **Search**.

A link to the relevant patch is displayed. Click the link to view the details of the patch and download the **EXSC_00011.ZIP** file.

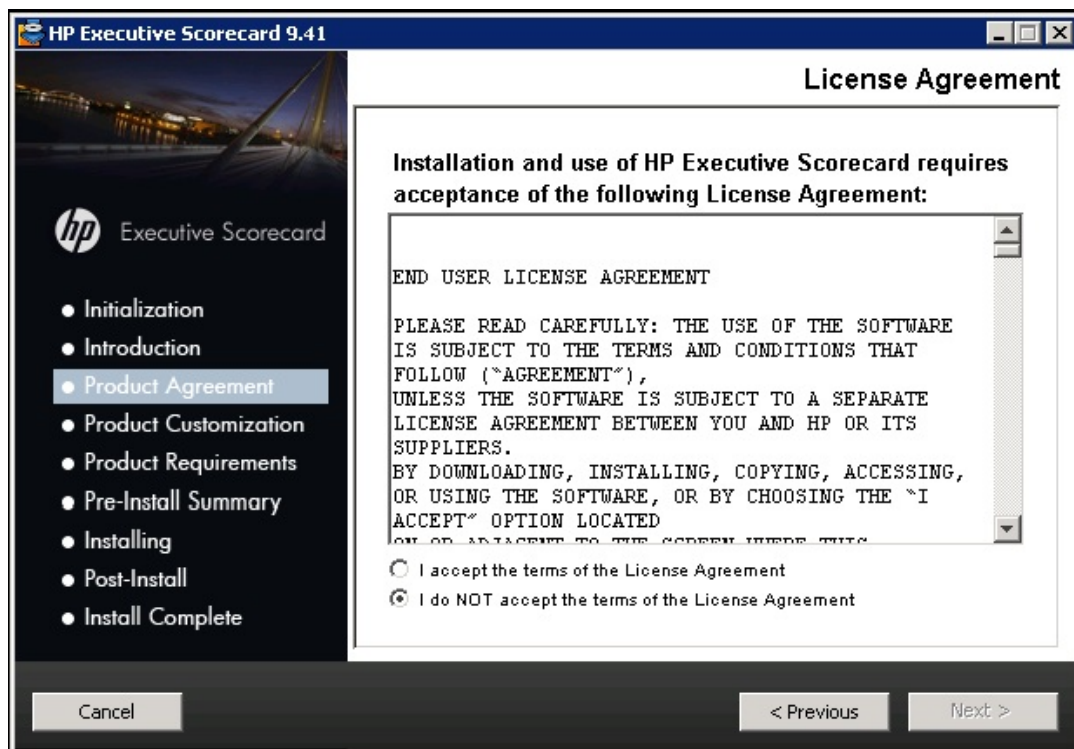
Note: If you copy the installation directory from the Support Site, make sure that the path to the target directory does not include blank spaces.

2. Unpack the .ZIP file and click **HPXS941_9.41_setup.exe**.

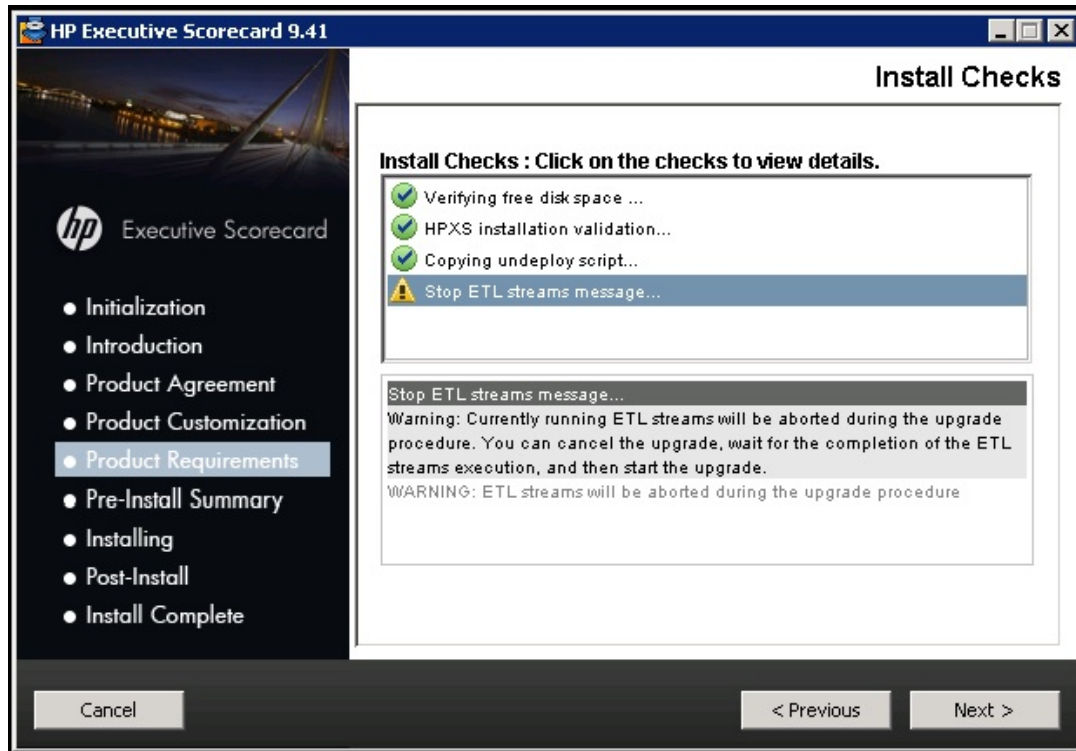
The Installation wizard opens.
3. In the **Initialization** page, click **Next**. The Introduction page opens.



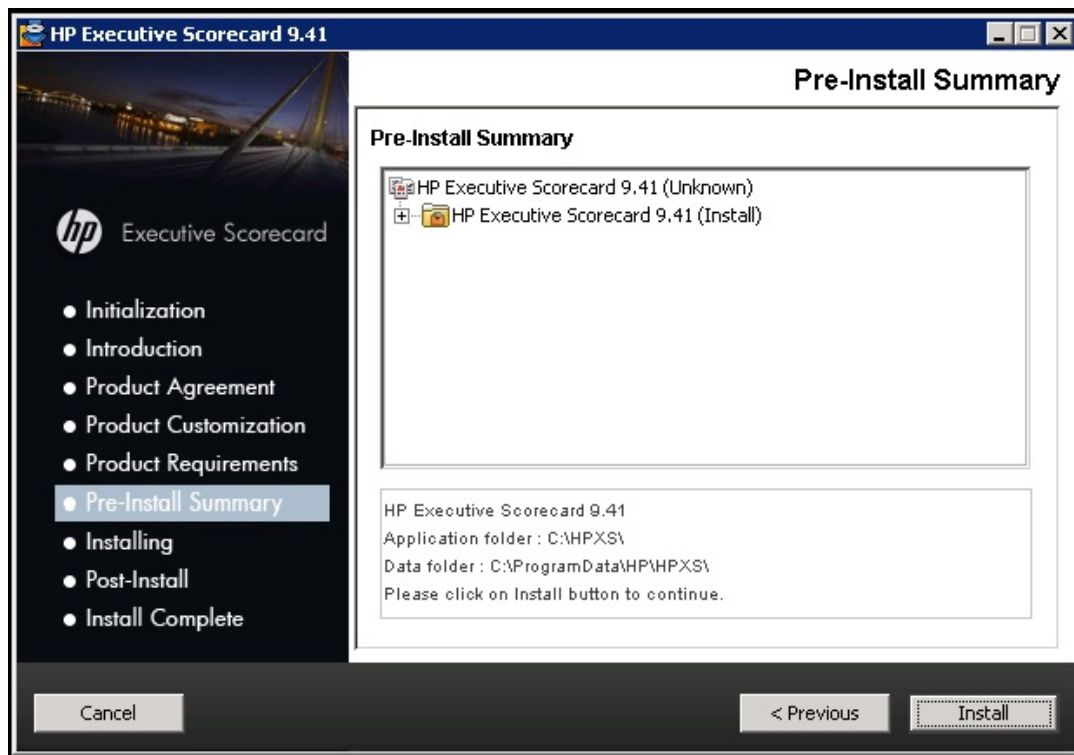
4. In the **Introduction** page, click **Next**. The Product Agreement page opens.



5. In the **Product Agreement** page, click **Next**. The Product Customization page opens, and then when you click **Next** the Product Requirements page (with the same contents) opens.



6. In the **Product Requirement** page, click **Next**. The Pre-Install Summary page opens.



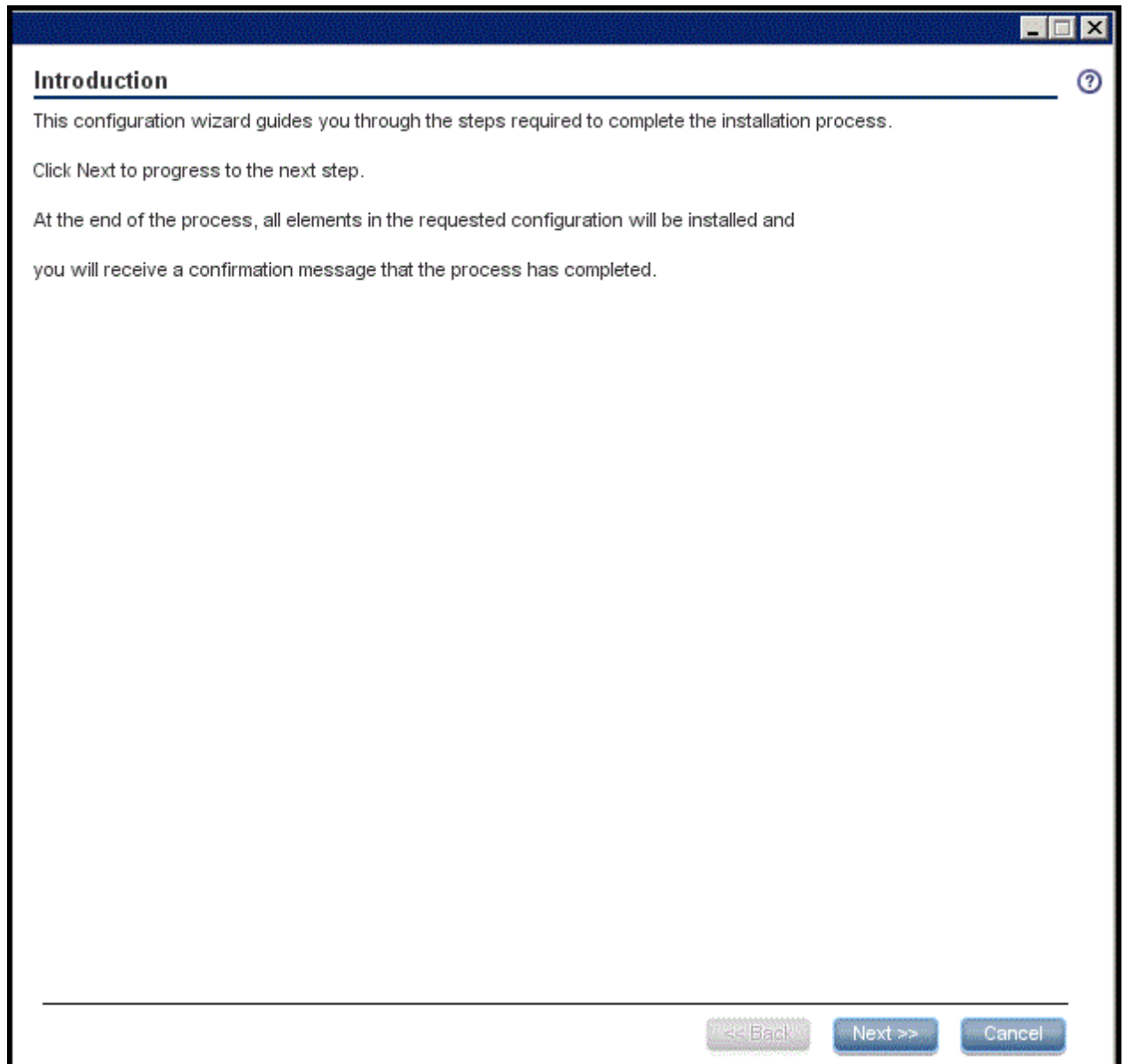
7. In the **Pre-Install Summary** page, click **Next**. The Installing page opens.



8. In the **Installing** page, click **Install**.

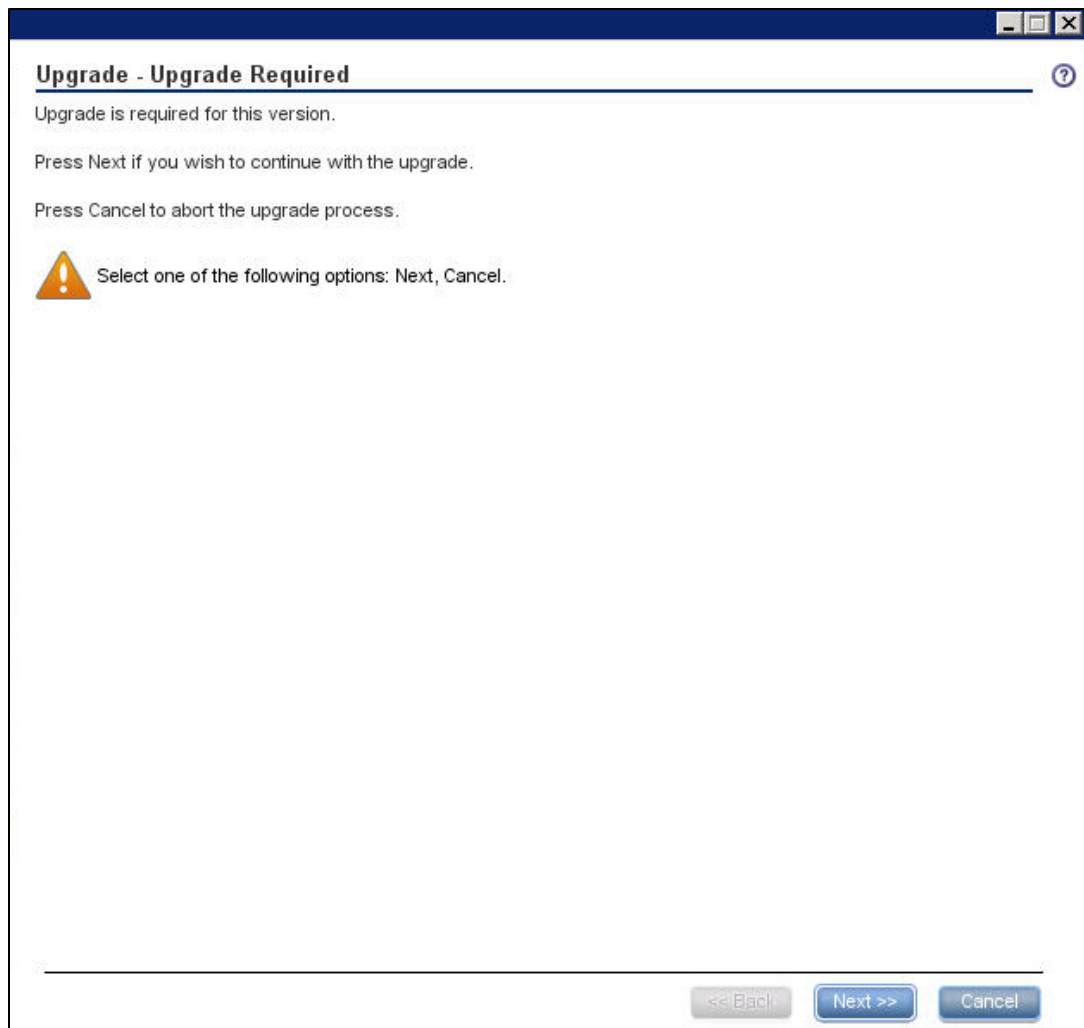
The Post-Install Configuration wizard starts.

The **Introduction** page of the Post-Install Configuration wizard opens. Click **Next**.

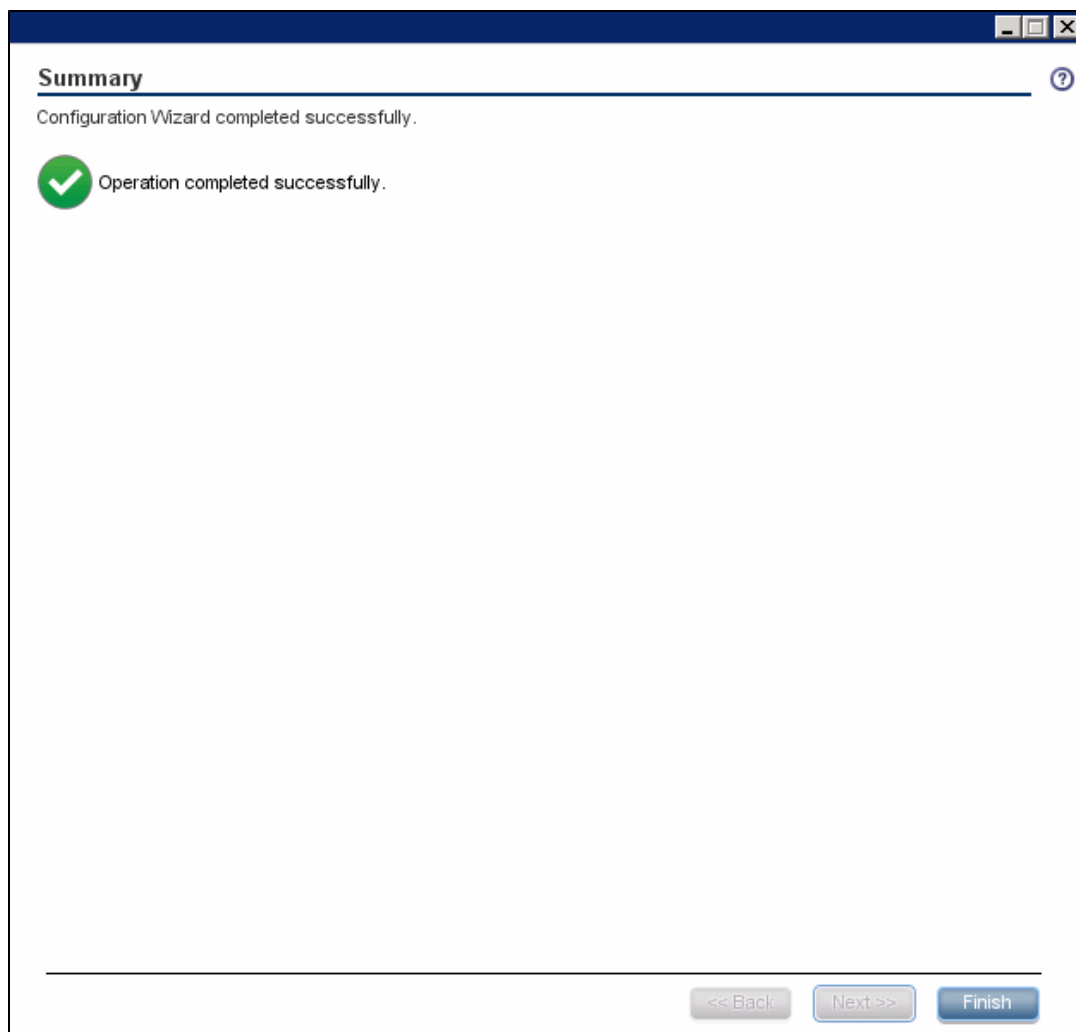


Upgrade Configuration

1. In the **Upgrade - Upgrade required** page, click **Next** to perform the upgrade.



2. In the Summary page, verify that you get the message **Operation completed successfully** and click **Finish**.



3. If after the upgrade the following message is displayed when you try to open the application:
The application is out-of-date. Click the Refresh button on your browser, clean the temporary Internet files and reopen the application.

Note:

- The upgrade changed the name and configuration of some of the KPIs, in addition to adding new KPIs. Each out-of-the-box KPIs has its own and unique UUID, so after the upgrade, the renamed or modified KPIs appear in the KPI Library (KPIs templates area) overriding the previous KPIs (according to their UUID). A KPI that was already activated in the previous version (by dragging it to the Active KPIs area) is not overridden during the upgrade. If you drag one of the upgraded KPIs from the KPI Library to the Active KPIs area, the new setting is displayed. The active KPI from the previous version and the active KPI from 9.40 have different UUIDs but have the same template UUID.

- At the end of the upgrade, verify the log files. If you find errors in the log files, investigate, correct, and consider re-running the upgrade process. For details on the log files, see [Logs](#) in the *IT Executive Scorecard Administrator Guide*.
- If you get errors at the upgrade configuration stage, verify the log files. Investigate, correct, and consider re-running the upgrade process following the step below:
 - i. Undeploy all using the command:
<HPXS>\agora\bin\undeployAll.bat
 - ii. Stop the Supervisor process with the command:
<HPXS>\agora\supervisor\bin\SupervisorStop.bat
 - iii. Remove the applications folder under:
<HPXS>\agora\glassfish\glassfish\domains\BTOA\applications
 - iv. Restart BOE.
 - v. Update the XSs version manually in the Management DB:
update [dbo].[SYS_VER] set MN='40'
 - vi. Re-run the post install process using the command:
<HPXS>\agora\confwizard\run_sp_postinstall.bat

4. You can now proceed with ["Additional Steps" on page 15](#).

Additional Steps

This section explains additional steps that you perform after the 9.41 upgrade.

The additional steps are:

["Reactivate the Data Sources" below](#)

["Database Security Procedures" on the next page](#)

["Disaster Recovery" on page 17](#)

["Additional Steps" above](#)

["Display the Webi and the Xcelsius Reports" on page 21](#)

["Upgrade the 9.40 Content Acceleration Packs \(CAPs\)" on page 21](#)

["Licenses and Permissions" on page 23](#)

["LDAP Users" on page 24](#)


["Optional - Configure BOE Connections to View Xcelsius KPI Audit and System Health Reports" on page 24](#)

Reactivate the Data Sources

1. **Reactivate the data sources.** After completing the upgrade, all connected data sources are in the **Deactivated** state. You must reactivate the relevant data sources using the Executive Scorecard user interface. For more information, see ["Data Source Management" on page 1](#) in the *IT Executive Scorecard Administrator Guide*.

Note: When reactivating BSM and UCMDB after upgrade procedure, you may have to re-enter the UCMDB username and password. For details, see ["Data Source Management" on page 1](#) in the *IT Executive Scorecard Administrator Guide*.

2. **If the NNM Content Pack was activated in 9.40.** If the NNM Content Pack was activated in 9.40, and if HP Network Node Manager does not need a password to connect to the shared folder (for example when the shared folder resides on the local machine), you must edit the setting of the connection and delete the password value, before you activate the NNM Content Pack. To do that proceed as follows:
 - a. In the application, click **Admin > Data Source Management**.
 - b. Click the **Edit Settings** link for HP Network Node Manager.
 - c. Delete the values in the **Password** field, and perform any additional changes.

- d. Click **Next** twice.
 - e. After the data source is successfully configured, click **Close**.
3. **Optional - Integration with SM** - In 9.40, the integration with HP Service Manager used the **ASSET** entity. In 9.41, the ASSET entity id not populated with SM data to achieve better results. After upgrading to 9.41, the ASSET entity retains SM history data. To clean the data history:
- a. Run the restream command
cd C:\HPXS\agora\DataWarehouse\bin
dw_abc_restream.bat -batch <MD_BATCH_ID> -entity ASSET -full Y
 - b. in XS, go to **Admin > ETL Management** and select **Show Hidden Streams**.
 - c. Click  in the Restream area.

This allows the ASSET entity to only retain data from HP Asset Manager.

For details, see ["Enterprise Readiness \(ER\) Tools" on page 1](#) in the *IT Executive Scorecard Administrator Guide*.

4. **Optional, When Working with AWS**

In 9.40, HP Cloud Service Automation was integrated with Amazon Web Services. This caused the tagging of AWS EC2 instances (the Virtual Machine from which you apply from AWS) when creating new instances. But for non-tagged instances, the billing data was aggregated by usage type. In 9.41, if you get your EC2 instances via CSA, CSA sets the tag when it applies a new EC2 instances. If you do not get your EC2 instances via CSA, the tag is not set for the new EC2 instances, and you must set the tag manually. The tag must be unique for each instance.

For details, see ["Optional, add tags manually for EC2 instances when working with AWS without CSA" on page 1](#) in the *IT Executive Scorecard Content Reference Guide for the Integration of Amazon Web Services*.

5. **Customized Content Packs.** If in 9.40 you had created new Content Packs or added entities to Content Packs, copy the artifacts to the Data Warehouse server and merge the customized Content Packs with the out-of-the-box ones in the **<HP_XS>\agora\ContentPacks** directory.

Database Security Procedures

Immediately following the upgrade procedures, perform necessary database security steps. For details, see ["Security Recommendations" on page 1](#) in the *IT Executive Scorecard Administrator Guide*.

Disaster Recovery

In case of disaster, find the latest disaster recovery procedure in the *IT Executive Scorecard Administrator Guide*.

The guide is also available from the Manuals site at [HP Software Product Manual Site](http://h20230.www2.hp.com/selfsolve/manuals) (<http://h20230.www2.hp.com/selfsolve/manuals>).

Optional, When Working With a Non-English Language

If you are working with a non-English language proceed as follows:

1. Localize the KPI Library

The localized installation adds the language libraries of XML files in specific folders. You copy and then import these files to display the out-of-the-box template Scorecards, Perspectives, Objectives, Folders, and KPIs in the KPI Library in the selected language.

To localize the out-of-the box content of the KPI Library: Scorecards, Perspectives, Objectives, and KPIs, proceed as follows:

- a. In the Executive Scorecard server, locate the `<XS_installation_directory>\agora\glassfish\glassfish\domains\BTOA\config\kpitemplates\import\languages\<language_code>_<country_code>` folder relevant for the language you want to use in the application. The .xml files in the folder represent both KPIs and KPI directories.

The language code and country codes are as follows:

Language	Language Code	Country Code
Brazilian Portuguese	pt	BR
French	fr	FR
Spanish	es	ES
German	de	DE
Japanese	ja	JP
English	en	US
Dutch	nl	NL
Italian	it	IT

Language	Language Code	Country Code
Simplified Chinese	zh	CN
Korean	ko	KR
Russian	ru	RU
Turkish	tr	TR

- b. Copy these .xml files to the **<XS_server>\agora\glassfish\glassfish\domains\BTOA\config\kpitemplates\import\load** folder.

Tip:

If the folder contains other sets of files (for different languages), it is recommended to keep in the folder only the required set of language files and to move the other files outside the folder to prevent the loading of both set of language files and an unknown result.

- c. Import the out-of-the-box language files using the **KPI Loader > importKPIs()** procedure described in ["Import or Export Trees and KPIs"](#) in the *IT Executive Scorecard Administrator Guide*.

2. Localize the Dashboard Pages and Components

The localized installation adds the language libraries of XML files in specific folders. You copy and then import these files to display the out-of-the-box template pages and components in the selected language, in the Dashboard.

During the upgrade to 9.41, all OOTB Page and Component categories in English and other languages are deleted and only the 9.41 Pages and Component categories in English are recreated. They include the OOTB pages and components for 9.41. If in the previous version you had created pages and components and had assigned them to OOTB Page or Component categories, you have to reassign them manually.

To localize the out-of-the box pages and components, proceed as follows:

- a. In the Executive Scorecard server, locate the **<XS_installation_directory>\agora\glassfish\glassfish\domains\BTOA\config\ui mashup\import\languages\Components\<lang>_<country_code>\<name>.uim.xml** or **<XS_server>\agora\glassfish\glassfish\domains\BTOA\config\ui mashup\import\languages\Pages\<lang>_<country_code>\<name>.uim.xml** files relevant to the language you want to install. These .uim.xml files represent the components and the pages used in the Dashboard. **lang** is the language code and **country_code** is the code of the country:

Language	Language Code	Country Code
Brazilian Portuguese	pt	BR
French	fr	FR
Spanish	es	ES
German	de	DE
Japanese	ja	JP
English	en	US
Dutch	nl	NL
Italian	it	IT
Simplified Chinese	zh	CN
Korean	ko	KR
Russian	ru	RU
Turkish	tr	TR

- b. Copy these .xml files to the **<XS_installation_directory>\agora\glassfish\glassfish\domains\BTOA\config\ui mashup\import\to load** folder.

Tip:

If the folder contains other sets of files (for different languages), it is recommended to keep in the folder only the required set of language files and to move the other files outside the folder to prevent the loading of both set of language files and an unknown result.

- c. Import the out-of-the-box language files (**only for the pages and components - events are not localized**) using the relevant procedure described in "[Import or Export Out-of-the-box Pages, Components, and Events](#)" in the *IT Executive Scorecard Administrator Guide*.

3. Test the installation

Check the universes in the Executive Scorecard Studio:

- If you do not see them, run the Load meta data JMX.
- If you still cannot see the universes, restart SAP BusinessObjects Enterprise and rerun the "Load meta data" JMX. For details, see the *IT Executive Scorecard Troubleshooting Guide*.

4. Set up the User Interface Display Language

All translated files are provided with the product and the language of the user interface depends on the language settings of your browser. English is the default language.

- a. If you want to display the user interface in a non-English language, go to your browser **Tools > Internet Options**.
- b. In the **General** tab, click **Languages**.
- c. Add the language you want to view in the user interface and use **Move up** to move it to be the first in the list.
- d. Open a new browser and log on to Executive Scorecard. The application is presented in the chosen local language.

5. Set up the Input and Content Language

The inputs and content language (i18N) depends on the definitions of your database. For details on the supported languages, see *IT Executive Scorecard Support Matrix*.

6. Import localized CAPs.

To upload localized CAPs:

- a. Delete the pre-imported out-of-the-box CAPs in the English language.
- b. Upload the localized CAPS:
 - **Localized out-of-the-box CAP.** To upload a localized out-of-the-box CAP, proceed as described in ["Additional Steps" on page 15](#) and specify the location of the out-of-the-box CAP.

Note: Localized out-of-the-box CAPs .ZIP files are placed in the relevant language folder during installation:

..\HPXS\agora\glassfish\glassfish\domains\BTOA\config\cap\import\languages

For example, the VPOPS CAP in German is located at:

..\HPXS\agora\glassfish\glassfish\domains\btoa\config\cap\import\language\s\de_DE\VPOPS_de_DE.zip

- **Localized user-defined CAP.** To upload a localized user-defined CAP proceed as described in ["Additional Steps" on page 15](#) and specify the location of the localized CAP you have created.

Display the Webi and the Xcelsius Reports

When Executive Scorecard is installed on an SQL Server named instance, and in order for the Xcelsius and Webi reports to display properly in the relevant Dashboard components, the relevant universe (Context) connection must be updated to point to the <sql server name>\<named instance>.

To point to the named instance use the following steps:

1. Open the SAP BusinessObjects Enterprise Designer application on the SAP BusinessObjects Enterprise server.
2. Click **Tools > Connections** to display the connection list.
3. Select **XS_DWH_JDBC** and click **Edit**.
4. In the **Server** field enter <sql server name>\<named instance>:1433.
5. Click **Next** and then **Finish**.
6. Click **File > Export**, and then click **OK**.
7. Run a report to see if it works

Upgrade the 9.40 Content Acceleration Packs (CAPs)

OOTB CAPs

If you worked with Content Acceleration Packs (CAPs) in version 9.40, you must upgrade the CAPs so they work in 9.41.

Copy the CAP kpi files from load folder: <XS_server>\agora\glassfish\glassfish\domains\BTOA\config\cap\import\load\ to the loaded folder: <XS_server>\agora\glassfish\glassfish\domains\BTOA\config\cap\import\loaded\.

User-Defined CAPs

To upgrade existing User-Defined CAPs:

1. Activate the version 9.41 CAPs.
2. Upgrade Executive Scorecard to version 9.41.
3. Create a new CAP based on the entities of the 9.40 CAP that you activated.
4. De-activate the original CAP.

5. Delete the original CAP.
6. Activate the new CAP.

For details on all CAP procedures, see "[Content Acceleration Pack](#)" on [page 1](#) in the *IT Executive Scorecard Administrator Guide*.

Item in the 9.30 manifest.properties file	Item in the 9.31 manifest.properties file	Do the following:
	UUID= < A unique ID for the Content Acceleration Pack >	
universe= <The names of the universes to be calculated (comma separated). For example, Period_Universe.>	BCs= <The names of the universes to be calculated (comma separated). For example, Period_Universe.>	
		This information stays the same.
		This information stays the same.
version= <The version of the Content Acceleration Pack >	version= <The version of the Content Acceleration Pack >	This information stays the same.
	xs.version= <The version of Executive Scorecard >	Add the version of Executive Scorecard that was used when you created the CAP. The version number is available in the About dialog in the top right corner of the application.
	name= <The name of the Content Acceleration Pack. Mandatory >	Enter a name for the CAP.
	description= <The description of the Content Acceleration Pack.>	You can add a description for the CAP.

• a.

Item in the 9.30 manifest.properties file	Item in the 9.31 manifest.properties file	Do the following:
	publisher= <The name of the user, partner, or company that created the CAP.>	You can optionally add the name of the publisher.
	documentation= <The path to the file that documents the CAP. The document can be in Microsoft WORD, or PDF format.>	

Licenses and Permissions

The Scorecard Administrator role, Viewer Group, Role and Permissions are created during the upgrade procedure.

After applying the new license keys:

- Because existing users continue to be assigned as they were prior to upgrading to XS 9.41, users that are not under the **Viewer** group or do not have a **Viewer** role and permissions, are considered as Advanced users and are counted accordingly. The Super Administrator can start to assign existing Users or Groups to the **Viewer** group
- All existing 9.40 Scorecards retain the **ALL** permission according to a specific resource and role, and can be viewed by all users in the **Everyone** group. The Super Administrator can change permissions by removing the role of a specific Scorecard from the Everyone Group, and then assigning the specific Scorecard role to other users.

The display of new Scorecards created in 9.41 depends on the permissions:

- If the Scorecard was created by a **Scorecard Administrator** user and the viewers have the **View Scorecards** permission for that Scorecard, then they can view the Scorecard.
- If the Scorecard was created by an **Administrator** user, then everyone has the permission to view/manage it.

For details, see ["Role Management" on page 1](#).

LDAP Users

If you enabled LDAP in version 9.40, after the upgrade to 9.41, the LDAP users are not listed in **Admin > Users and Roles > User Management** . To ensure they are listed:

1. Locate the **<installation directory>\
agora\glassfish\glassfish\domains\BTOA\config\conf\bsf.properties** file.
 - In the bsf.properties file, change:

`personalization.provider=EXTERNAL`

`users.provider=EXTERNAL`

`groups.provider=EXTERNAL`

to:

`personalization.provider=SHARED`

`users.provider=SHARED`

`groups.provider=SHARED`
2. Disable HP Executive Scorecard.
3. Enable HP Executive Scorecard.

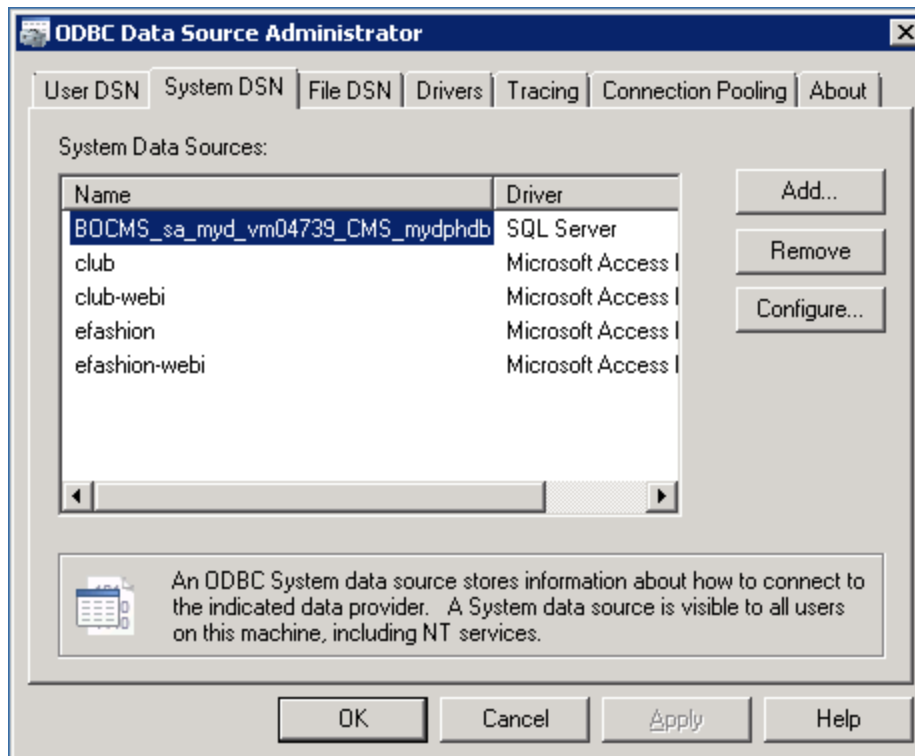
Optional - Configure BOE Connections to View Xcelsius KPI Audit and System Health Reports

When you upgrade XS 9.4 to 9.41 on a distributed environment (i.e. BOE, XS and DWH are each installed on a dedicated server), you have to create new ODBC connections to enable the new Xcelsius reports to be displayed (KPI Audit and System health).

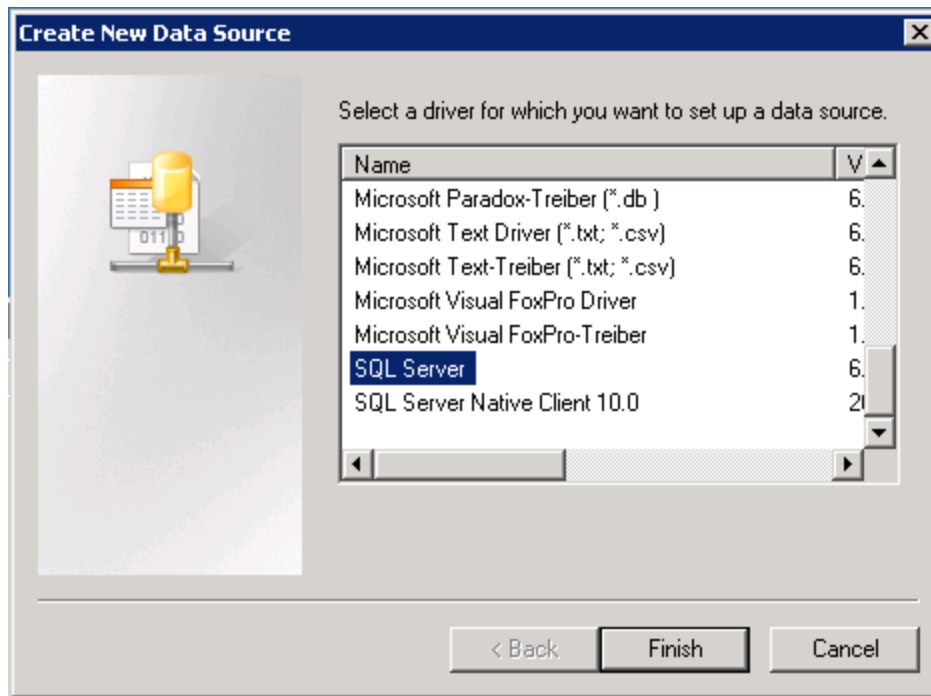
To do this, please follow the below procedure.

1. Configure 3 new System DSN (like the main DSN that connects the BOE with the CMS Data base).

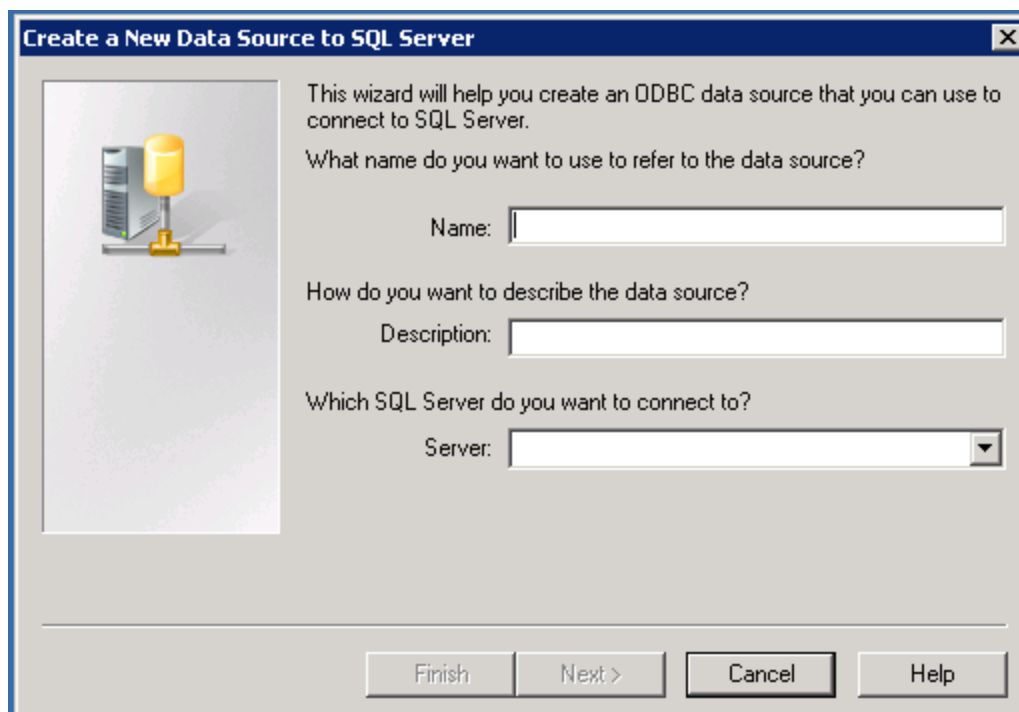
2. Open the ODBC Data Source Administrator (located at **C:\Windows\SysWOW64\odbcad32.exe**).



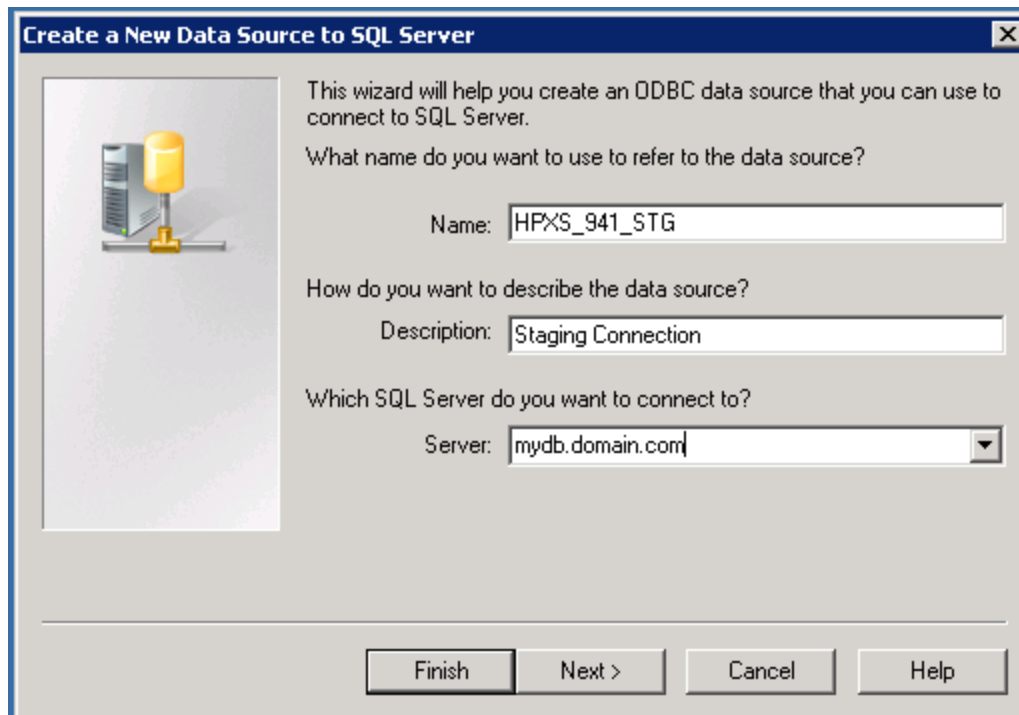
3. Click **Add** and select **SQL Server**.



4. Click **Finish**.



5. Enter the Name of the new connection, the description and the FQDN of the Data base Server.

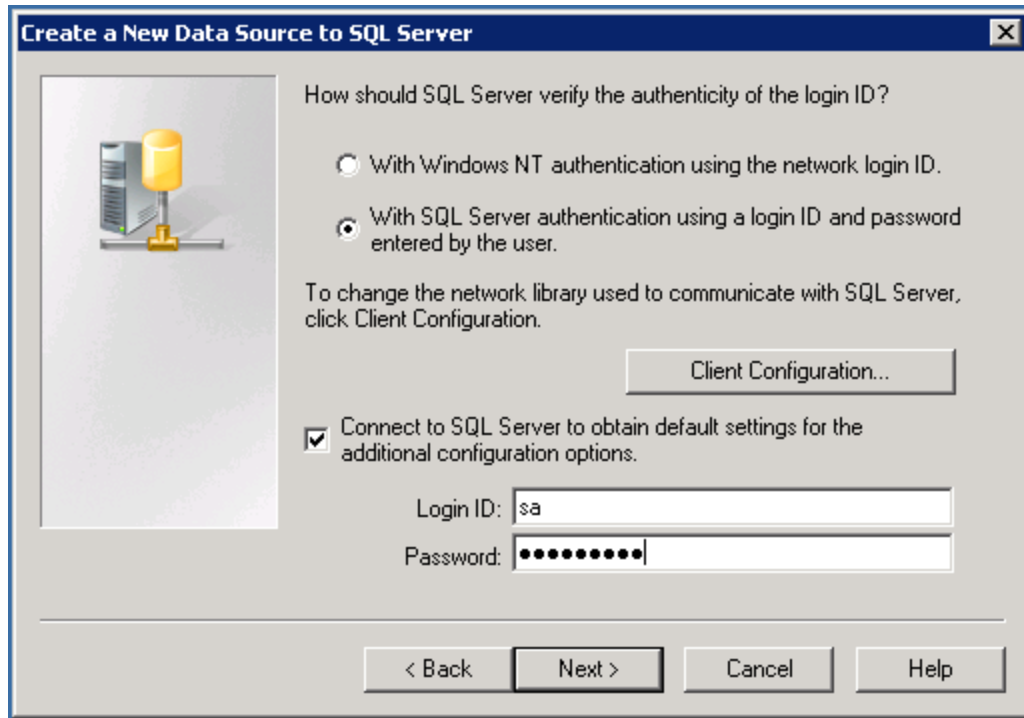


The screenshot shows a Windows-style dialog box titled "Create a New Data Source to SQL Server". On the left is an icon of a server tower and a yellow cylinder. The main text area contains the following instructions and input fields:

- "This wizard will help you create an ODBC data source that you can use to connect to SQL Server."
- "What name do you want to use to refer to the data source?"
Name:
- "How do you want to describe the data source?"
Description:
- "Which SQL Server do you want to connect to?"
Server:

At the bottom right, there are four buttons: "Finish", "Next >", "Cancel", and "Help".

6. Click **Next**. Select **With SQL Server authentication....** Enter the database server administrative user name and password.



Create a New Data Source to SQL Server

How should SQL Server verify the authenticity of the login ID?

☐ With Windows NT authentication using the network login ID.

☐ With SQL Server authentication using a login ID and password entered by the user.

To change the network library used to communicate with SQL Server, click Client Configuration.

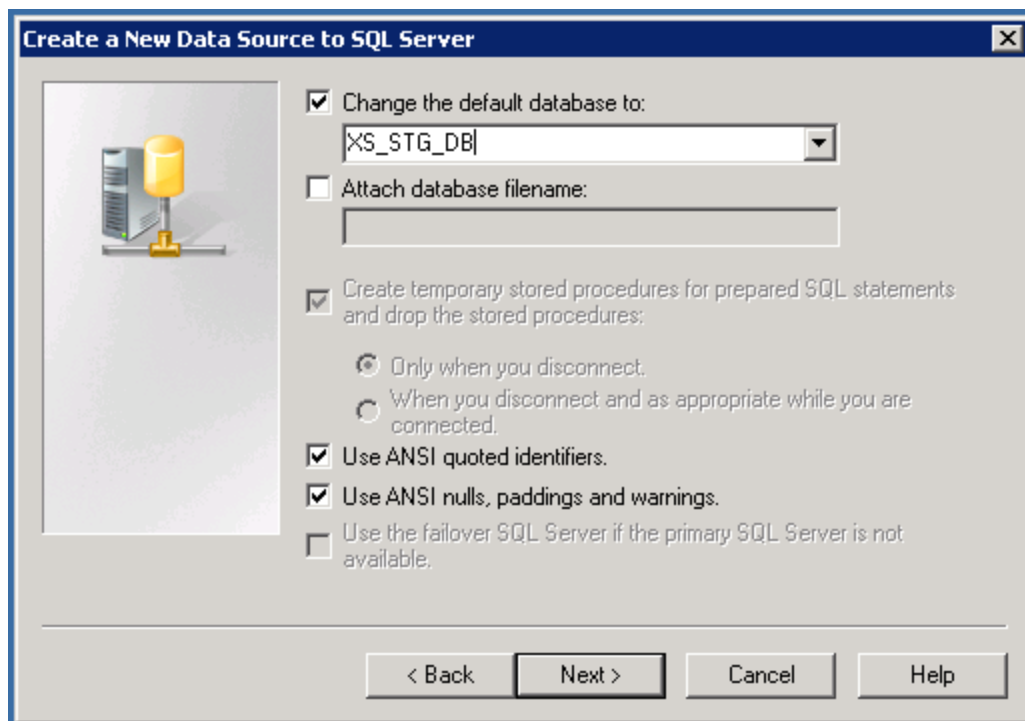
☒ Connect to SQL Server to obtain default settings for the additional configuration options.

Login ID: sa

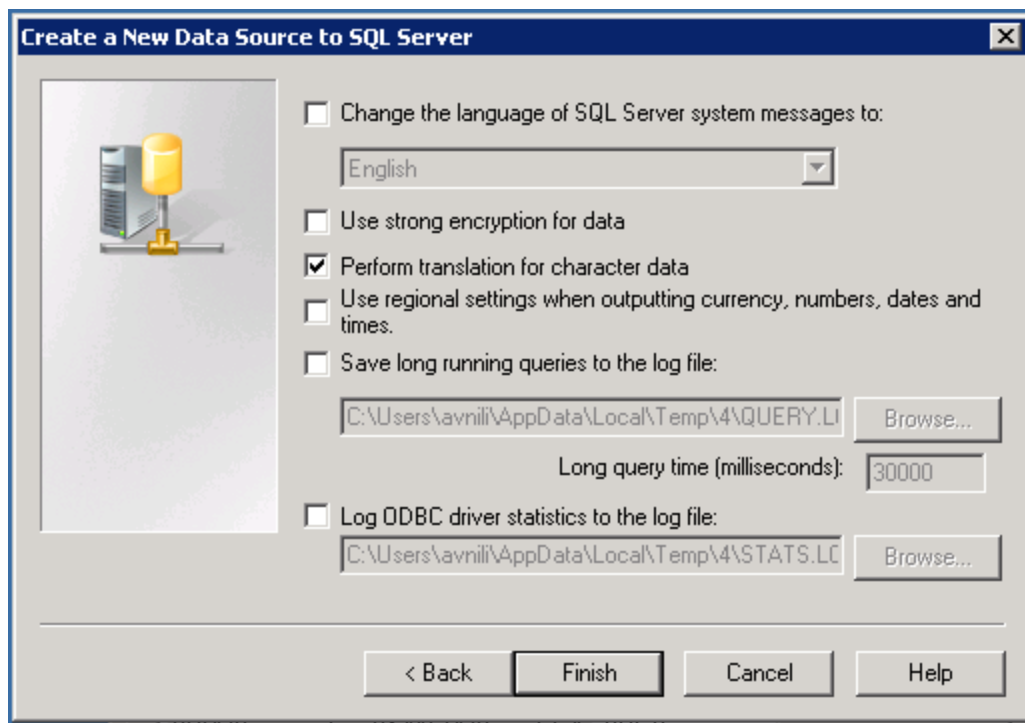
Password:

< Back Next > Cancel Help

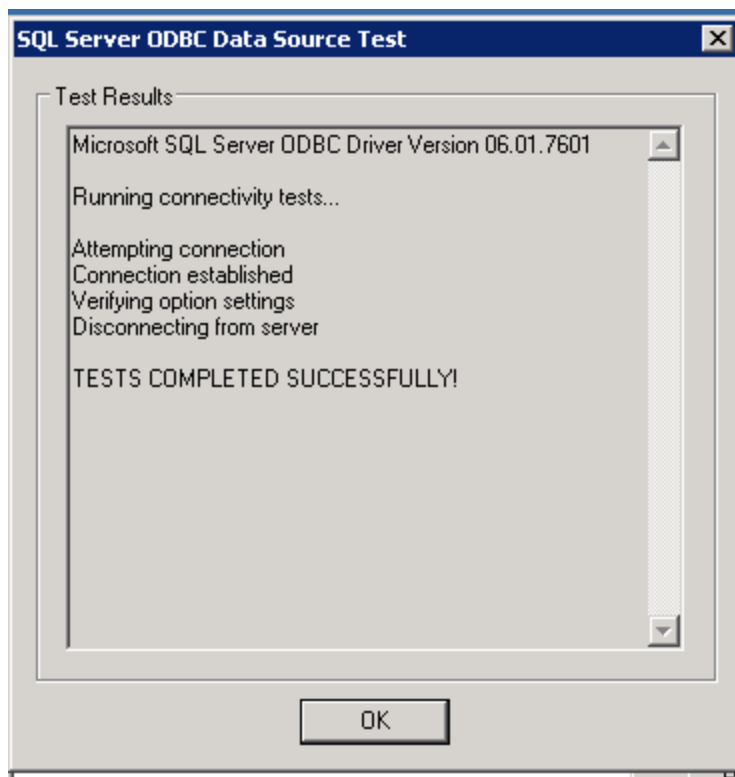
7. Click **Next**.



8. Enter the name of the XS Staging DB and click **Next**.



9. Click **Finish**, Test the new connection and verify it is successful.

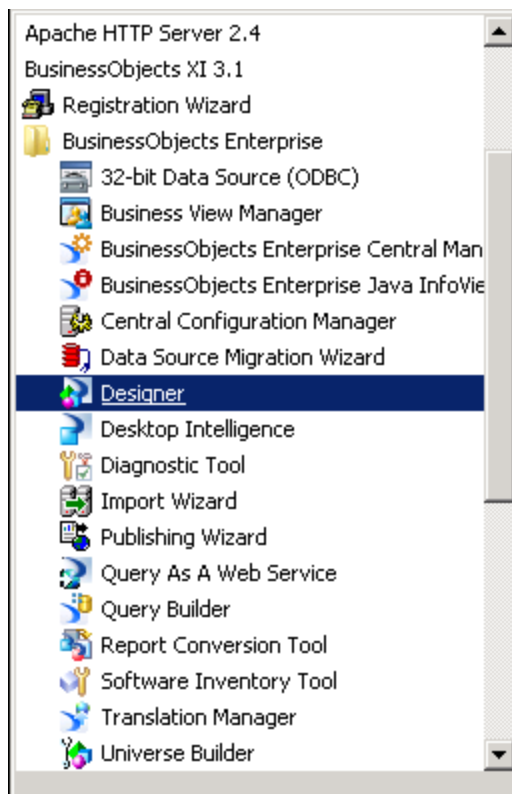


10. Repeat the above procedure for the Management DB and then for the Target DB.

Once this is done, you will have 3 new System DSN objects.

You must now create 3 new parallel ODBC connections to support these new system DSN.

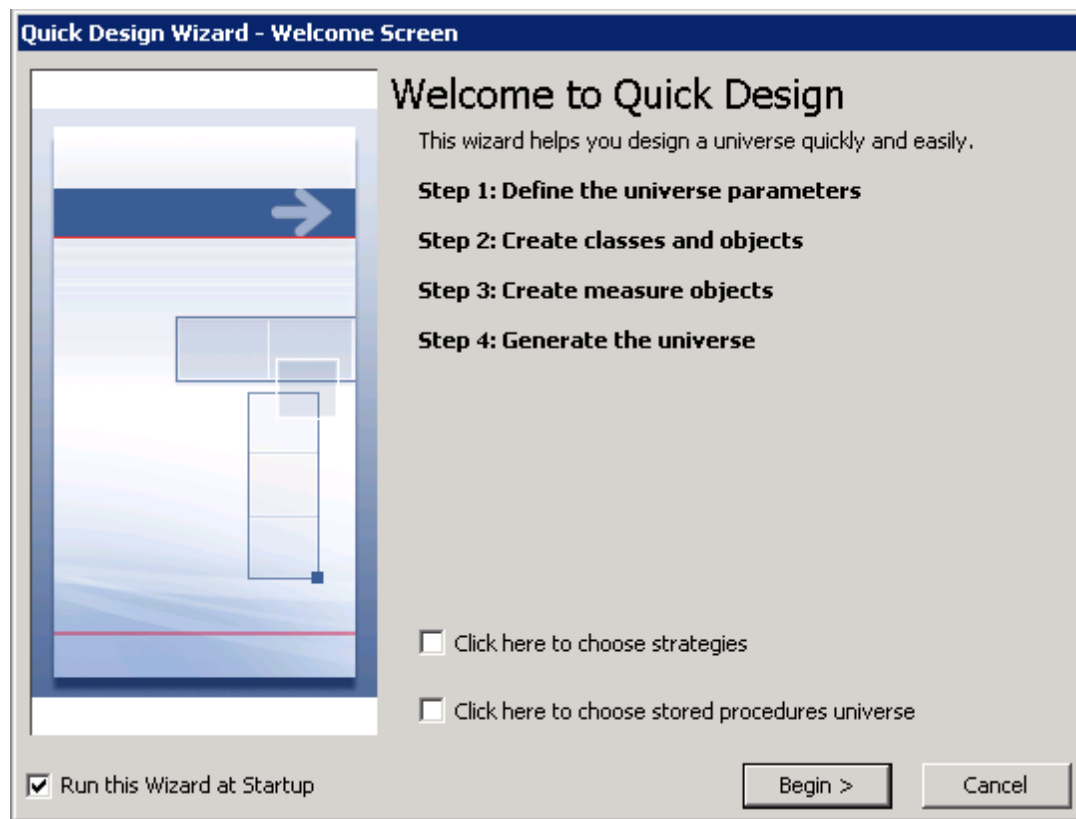
11. Open the BOE Designer.



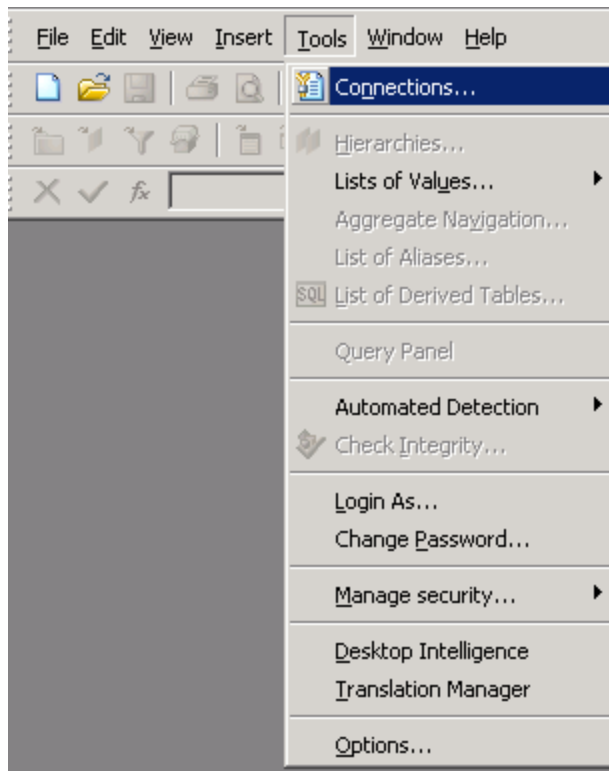
12. Log on with the appropriate credentials.



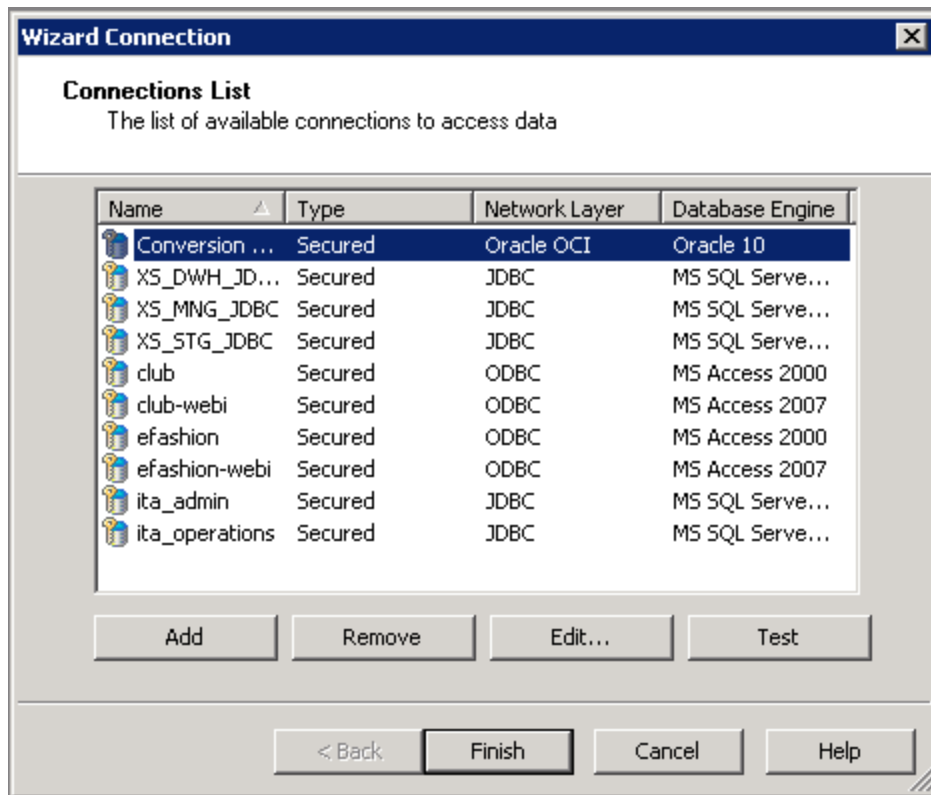
13. Click **Cancel** on the main screen.



14. Select **Tools > Connections**.



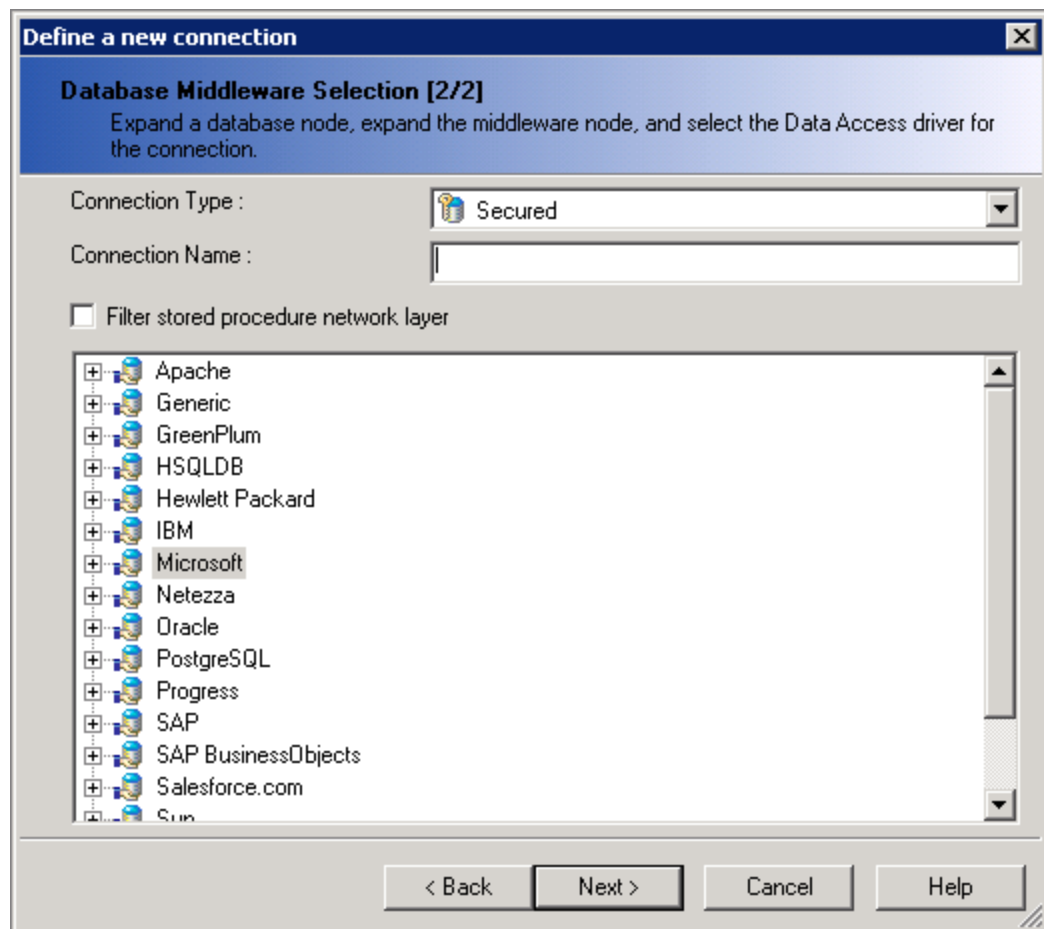
15. You must now create 3 new ODBC connections to correspond to the new system DSN you created previously.



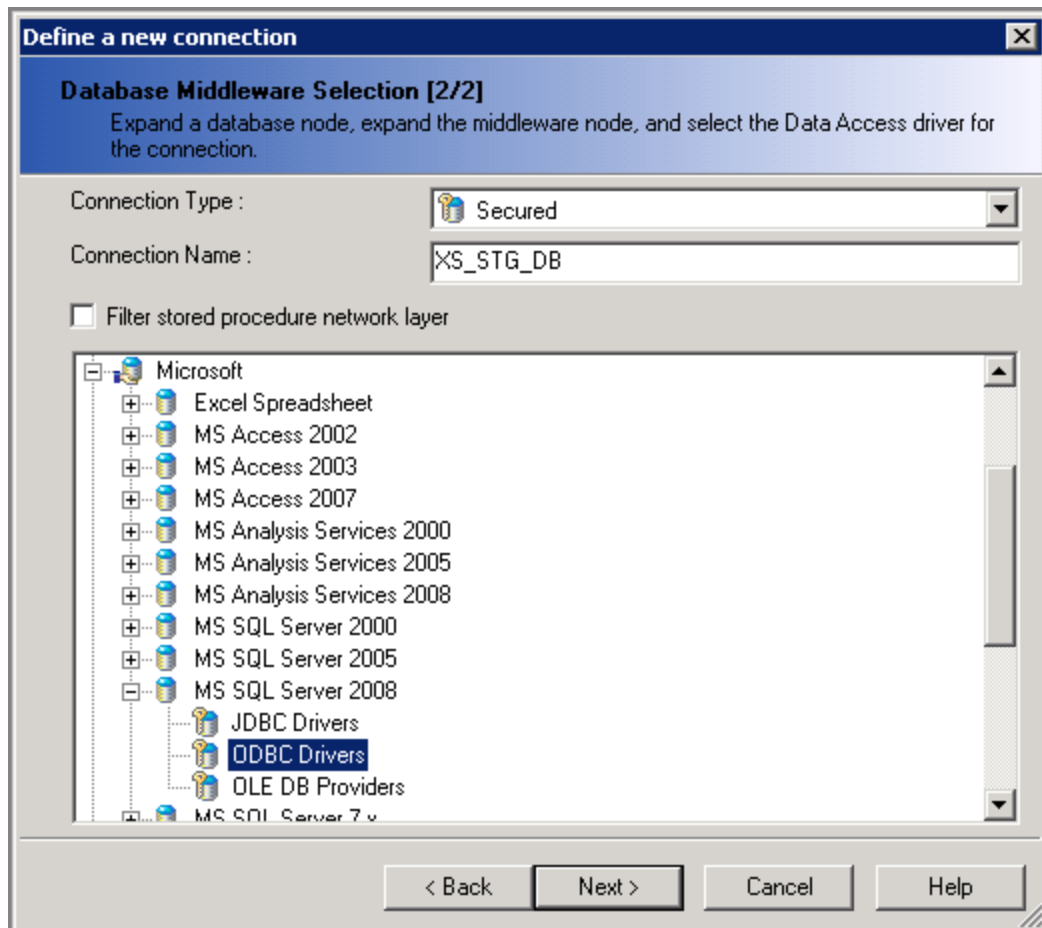
16. Click **Add** in the Wizard connection window.



17. Click **Next** in the Define a new connection window.



18. Enter a name for the connection (It is recommended to use the naming convention of XS_STG_DB for the staging DB connection, XS_TRG_DB for the target DB connection and XS_MNG_DB for the XS management DB connection). Expand the Microsoft box and expand the MS SQL Server 2008 box and choose the ODBC Drivers.



19. Click **Next**. Enter the Database server administrative user name and password. In the **Data source name** select the appropriate system DSN you defined earlier for the staging database.

Define a new connection

Login Parameters [3/5]
Define the login parameters to access your database server using ODBC middleware

Authentication Mode: Use specified username and password

User name: sa

Password: xxxxxxxx

Data source name: XS_STG_DB

Test Connection < Back Next > Cancel Help

20. Click **Next**. Keep the defaults in the **Configuration Parameters** window.

Define a new connection

Configuration Parameters [4/5]
Define the advanced parameters to access your database server using ODBC middleware

Connection Pool Mode: **Keep the connection active for**

Pool timeout: Minutes:

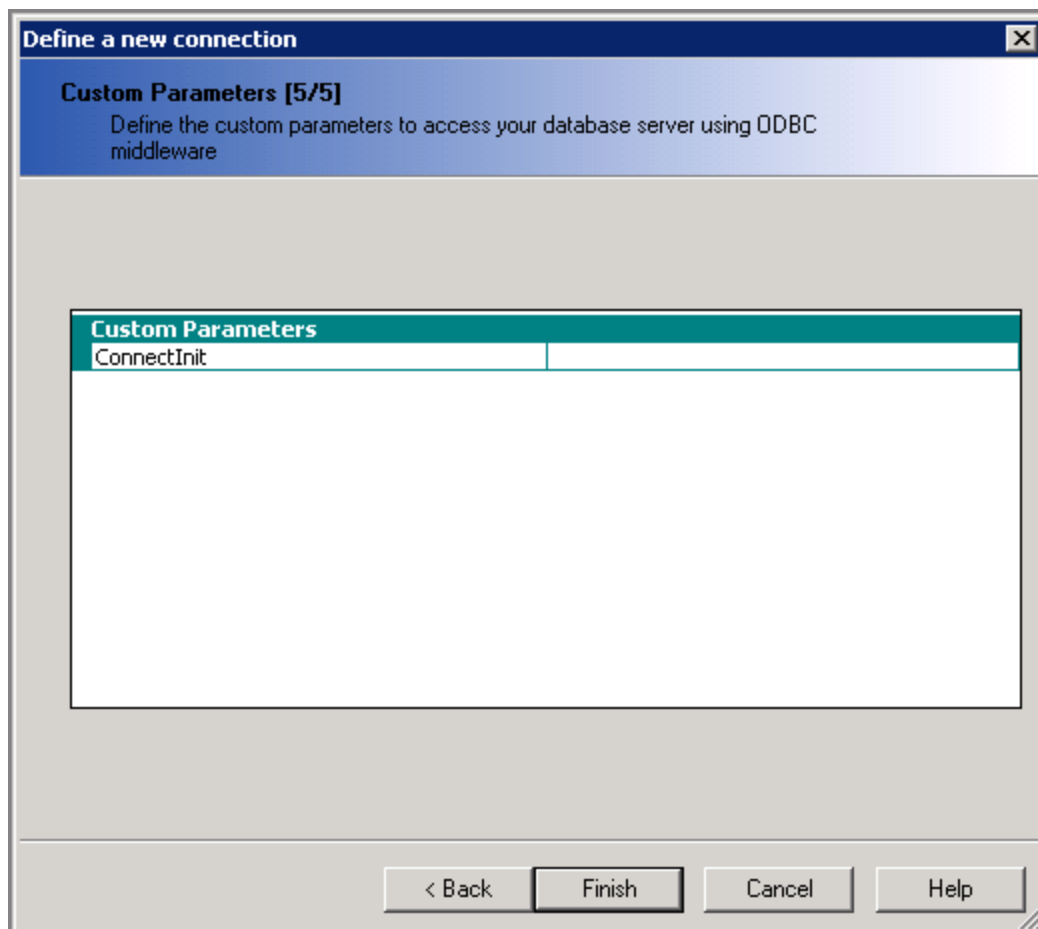
Array fetch size:

Array bind size:

Login timeout: Minutes:

< Back Next > Cancel Help

21. Click **Next** and then **Finish** in the **Custom Parameters** dialog box.



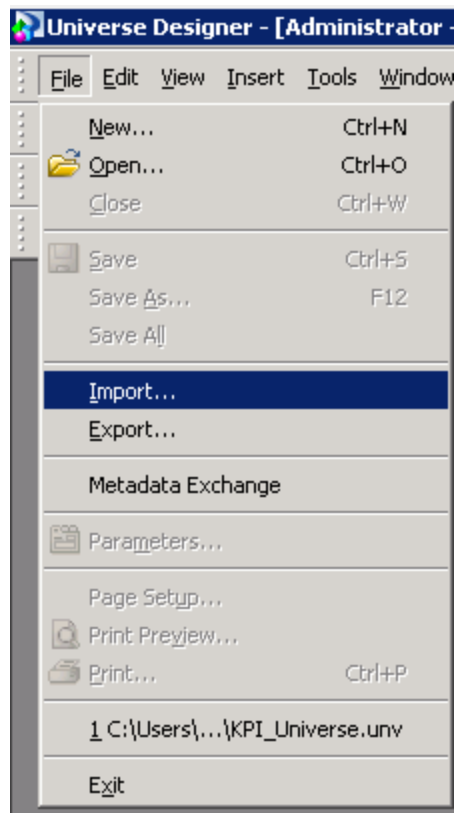
22. Test the new connection and verify that the server is responding.

Perform this action again for the Management and Target data bases.

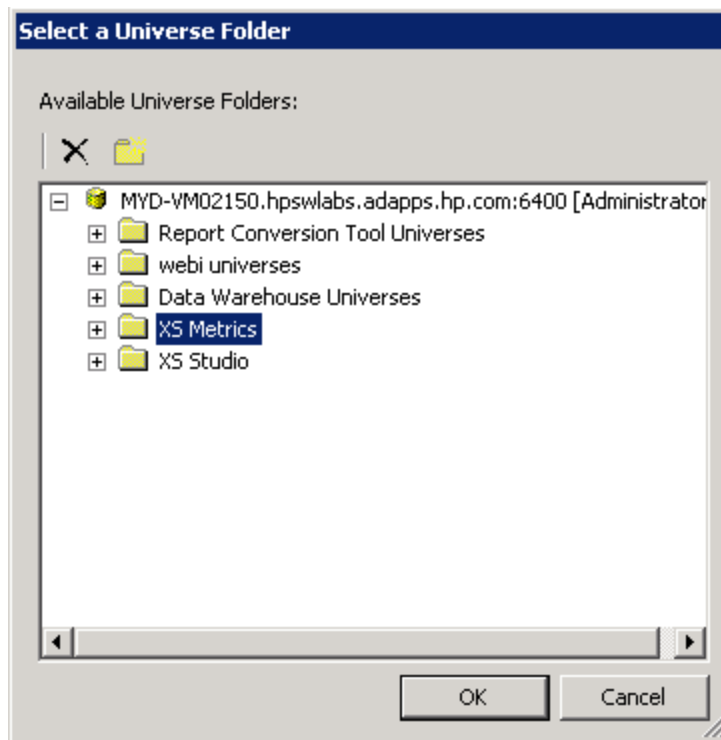
Once this is done, you will now have to connect the relevant KPI universes to the new connections.

You start with importing the relevant Universe into the BOE designer so its connection can be edited.

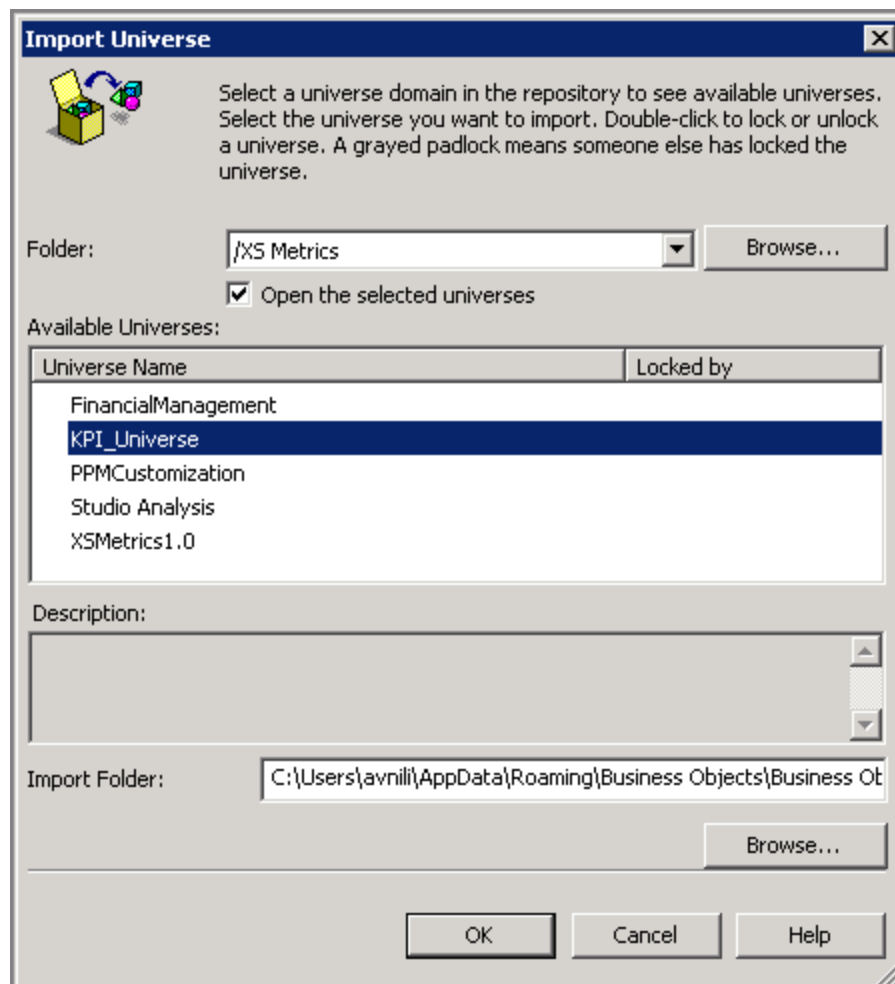
23. Open **File > Import**.



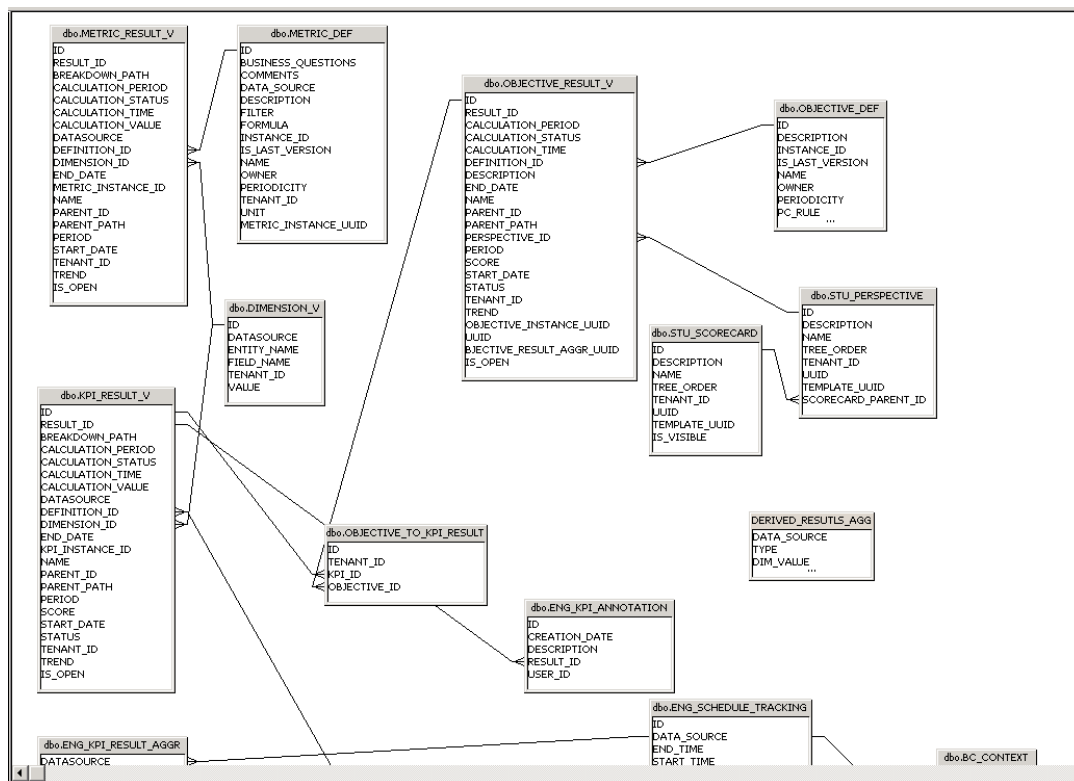
24. Click **Browse** and select **XS Metrics**.



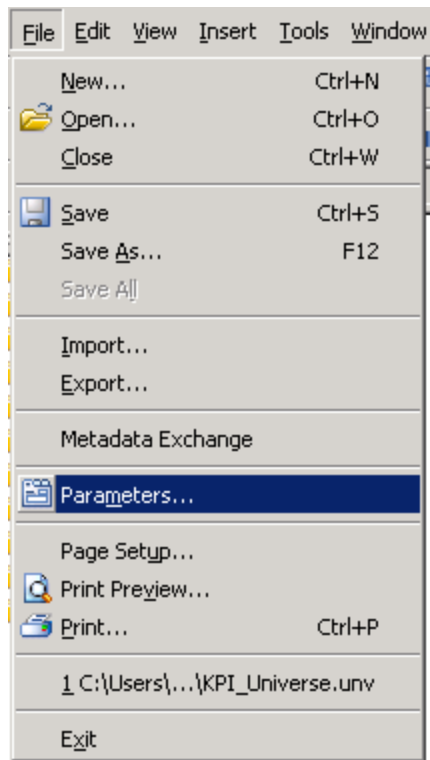
25. Select the **KPI_Universe** and press **OK**.



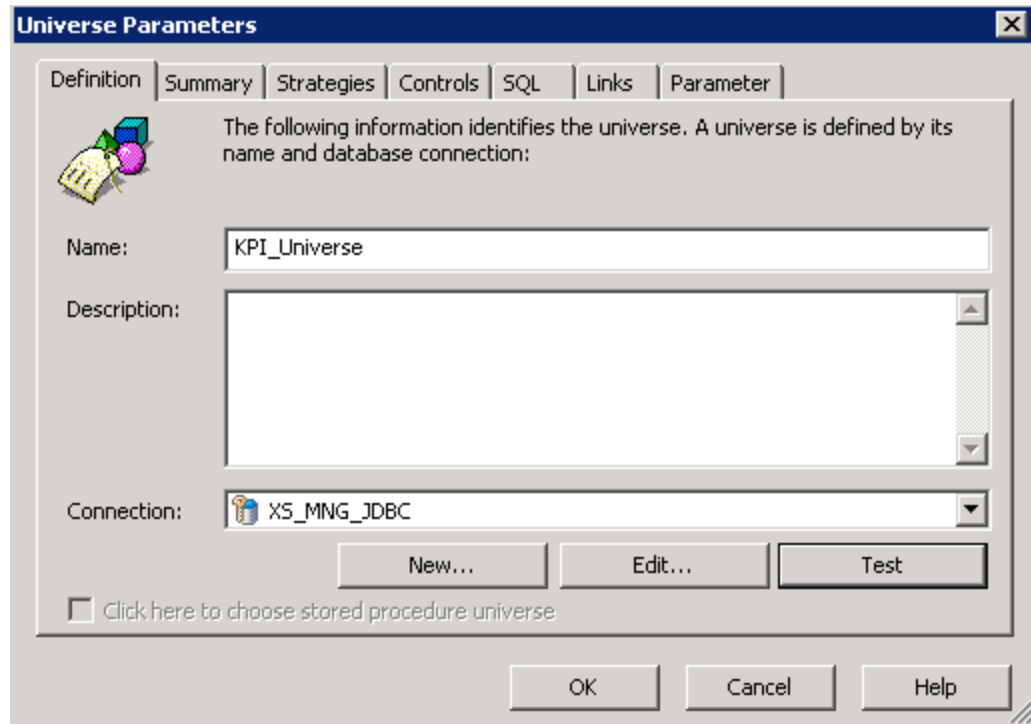
You will receive a **Universe successfully imported** notification and see the universe below.



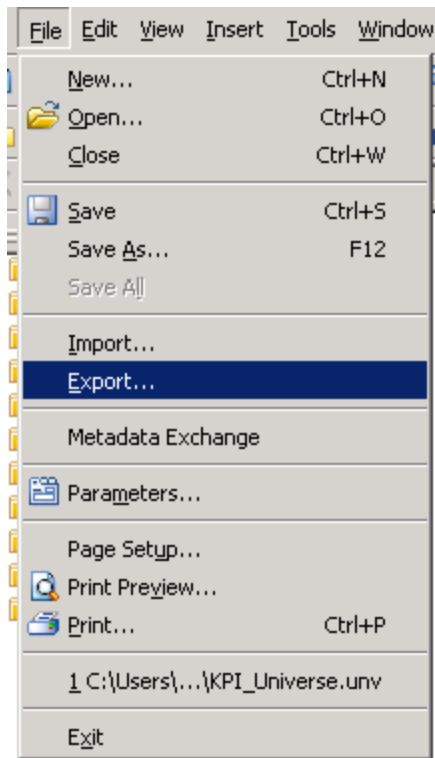
26. Select **File > Parameters**.



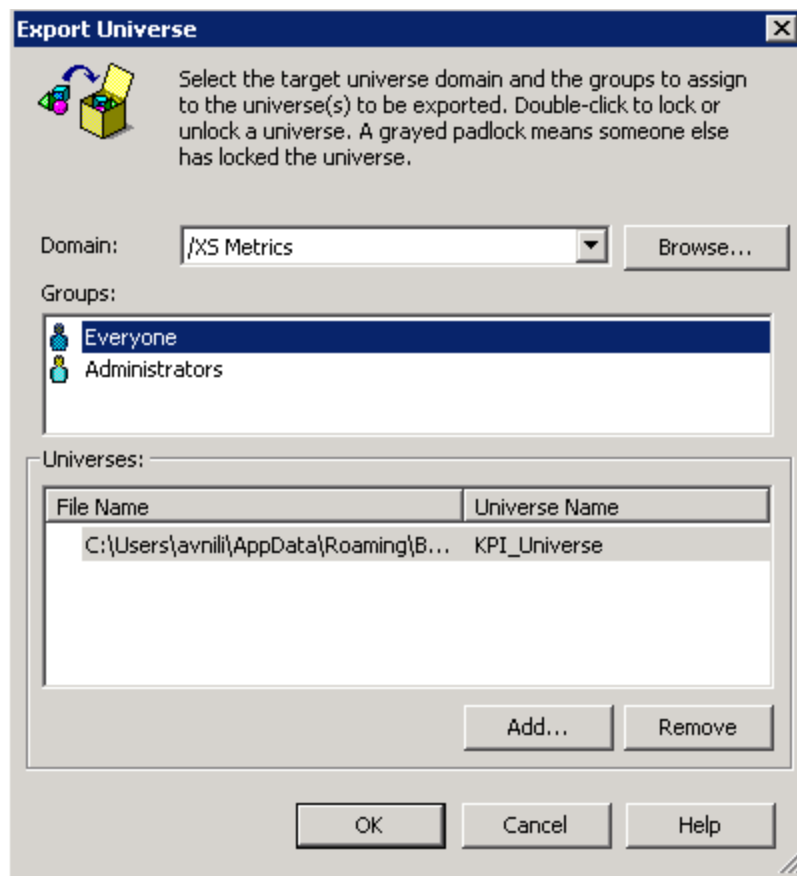
27. In the **Universe Parameters** dialog box, open the Connection drop list at the bottom of the dialog box, choose the new management db connection you previously created and press **OK**.



28. Save the new Universe and select **File > Export**.

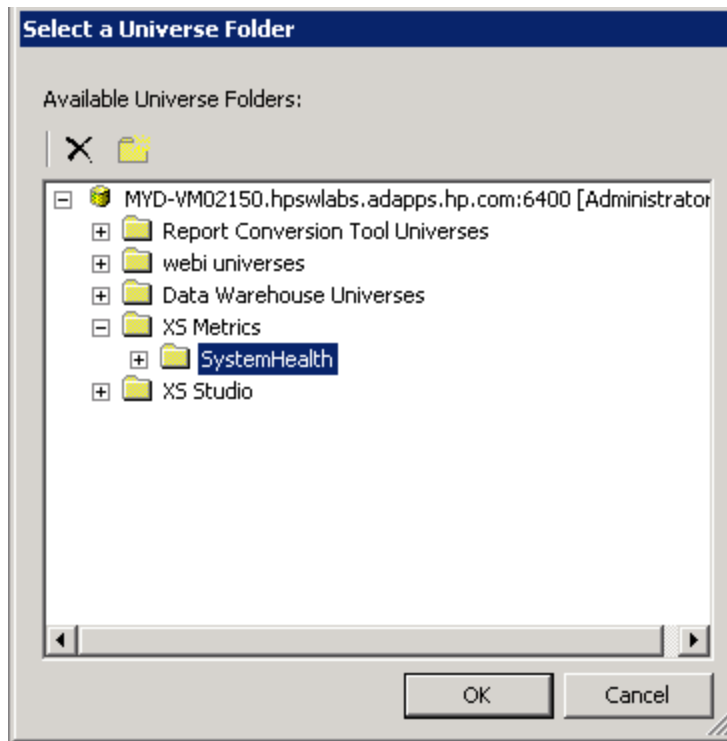


29. Select **Everyone** and click **OK**.

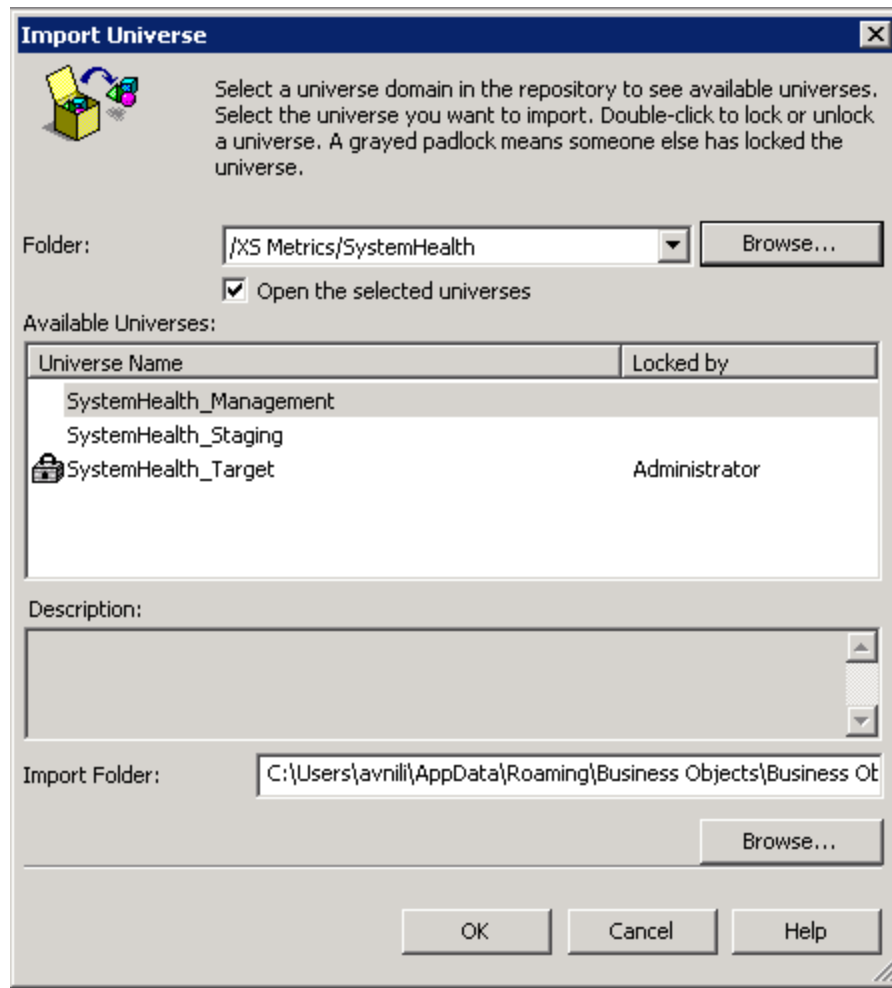


30. After you receive the successful Export confirmation message, close the opened KPI_Universe universe and open the SystemHealth universe.

31. Select **File > Import**, click **Browse**, expand the **XS Metrics** folder, select the **SystemHealth** folder and press **OK**.



You will see 3 universe names: SystemHealth_Managment, SystemHealth_Staging and SystemHealth_Target.



32. You have to perform the new connection attachment procedure to each of these universes according to the same procedure that was done on the KPI_Universe universe. To each universe, attach its respective new connection; i.e. attach the new management db connection to the SystemHealth_Managment universe, attach the new staging db connection to the SystemHealth_Staging universe and attach the new target db connection to the SystemHealth_Target universe. You should then export each universe, update the connection, save and import the universe.

After each successful import message, close the universe and open the new one again via the **File > Import** menu.

33. Once you have finished importing all 4 universes, the KPI_Audit and System health reports will be viewable in your Distributed XS system.

We appreciate your feedback!

If you have comments about this document, you can [contact the documentation team](#) by email. If an email client is configured on this system, click the link above and an email window opens with the following information in the subject line:

Feedback on Upgrade Guide (IT Executive Scorecard 9.41)

Just add your feedback to the email and click send.

If no email client is available, copy the information above to a new message in a web mail client, and send your feedback to SW-Doc@hp.com.

