



## HP Adoption Readiness Tool (ART)

### Installation Instructions 5.10

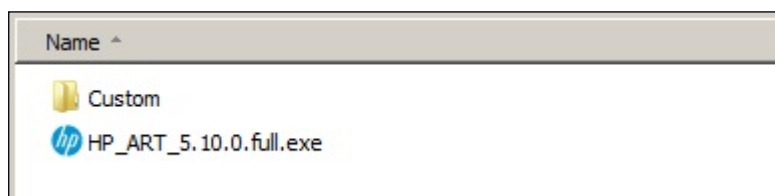
---

#### Before you begin:

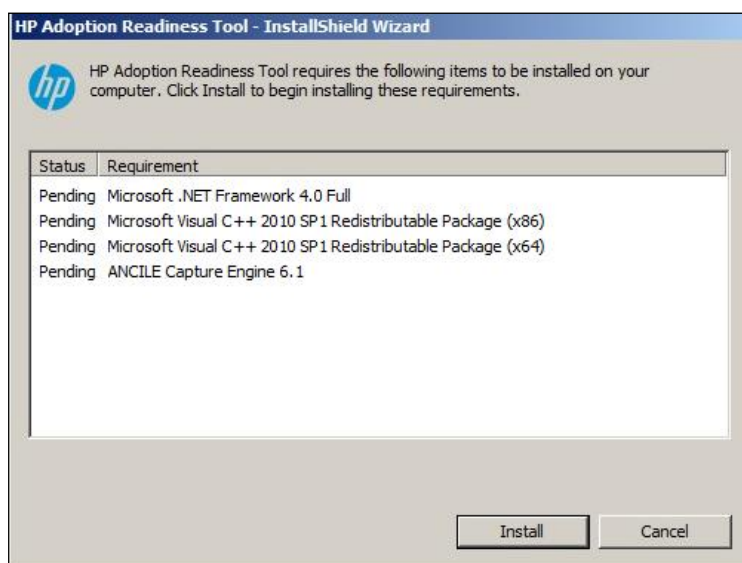
- If you have HP ART 4.40 installed, please uninstall HP ART 4.40 and reboot your machine prior to installing HP ART 5.10.
- Important: If you are currently using HP ART 4.40 and have customized your HP ART template and/or skin, please refer to the HP ART 4.40 to ART 5.10 Content Conversion Guide located on the [Software Support Online \(SSO\)](#) HP Software Product Manuals page before you install HP ART 5.10.

#### Navigate to the location of the HP Adoption Readiness Tool 5.10 Installation folder.

1. The HP ART 5.10 Installation folder includes the HP ART 5.10 executable install file, Custom folder and other HP ART DevKit documents. The Custom folder contains the ART 5.10 template and course skin that will automatically install during the ART 5.10 DevKit installation process. Do not change or rename this folder or its contents as this will prevent the template and course skin from installing.



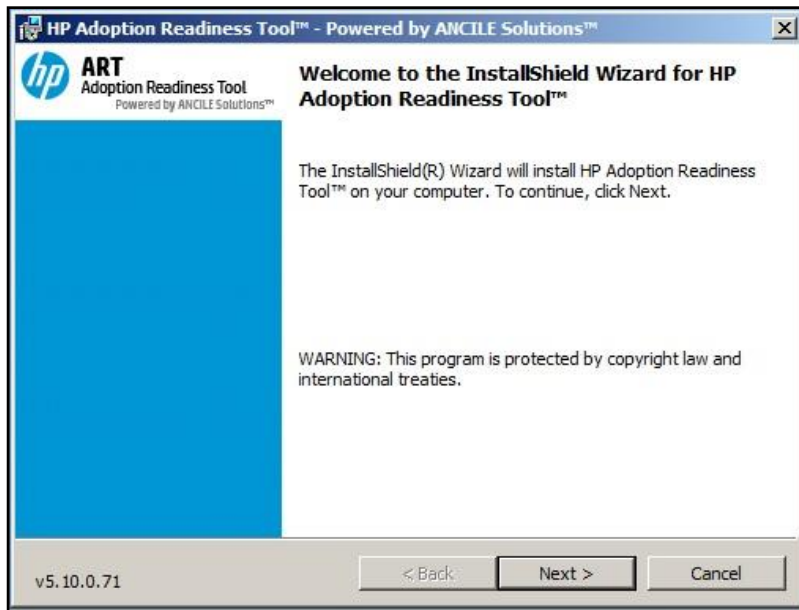
2. To begin, double-click on the .exe file and follow the prompts as they appear. If not previously installed, you will be prompted to install additional required elements.



3. Click **Install**.

4. The Welcome window displays.

Click **Next**.



5. Complete the following information and click **Next**:

Field	Description
Company Name	Enter your company or organization name delivered with the software license key. This value should be entered exactly as provided.
Product Key	Enter the product key delivered. This value should be entered exactly as provided.



HP Adoption Readiness Tool™ - Powered by ANCILE Solutions™

Customer Information  
Please enter your information.

hp ART  
Adoption Readiness Tool  
Powered by ANCILE Solutions™

Company Name:  
\*

Product Key:  
\*

Anyone who uses this computer (all users)

InstallShield

\* Required Fields   < Back   Next >   Cancel

6. Select the **Default Language** from drop-down menu and click **Next**:

HP Adoption Readiness Tool™ - Powered by ANCILE Solutions™

Select Language  
Select a default interface language for HP Adoption Readiness Tool

hp ART  
Adoption Readiness Tool  
Powered by ANCILE Solutions™

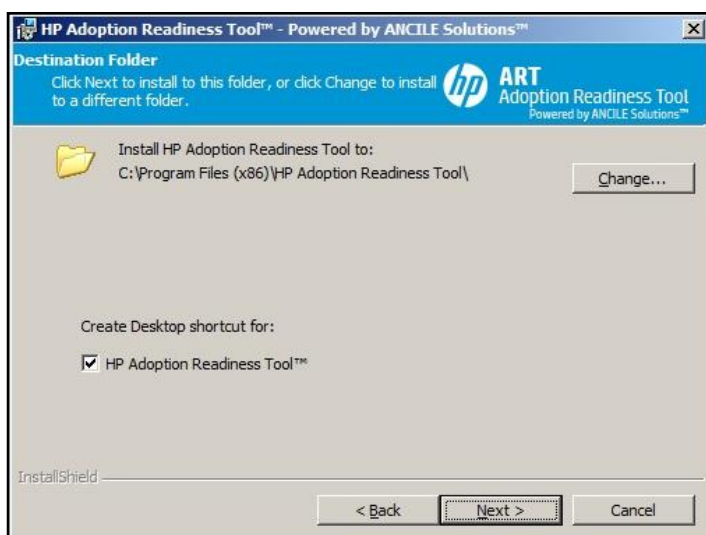
Default interface language:

InstallShield

< Back   Next >   Cancel



7. Click **Next**, to begin the install.



8. Optionally, select **Change** to specify a destination folder other than the default; and/or select the **HP Adoption Readiness Tool** checkbox to create a desktop shortcut for the application.

9. Click **Next**.

10. Follow the remaining onscreen instructions regarding default language and users.

11. Click **Finish** to complete the installation.

You are now ready to begin using HP ART 5.10. Please do not customize your HP ART Template with consulting your HP ART consultant.

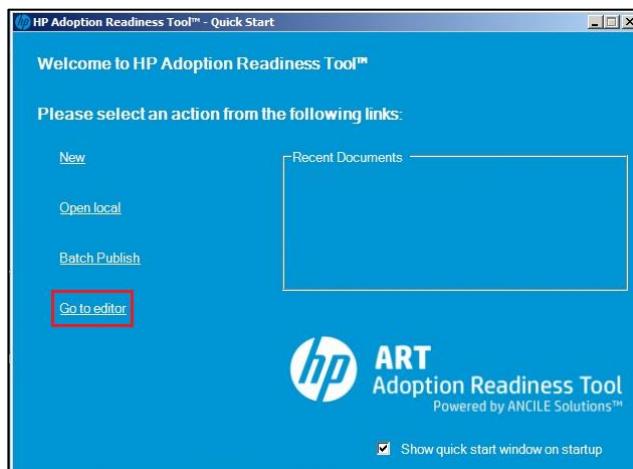
Please contact your HPSW Sales Representative or [hpssoftware.art@hp.com](mailto:hpssoftware.art@hp.com) for further information on HP ART training and services.



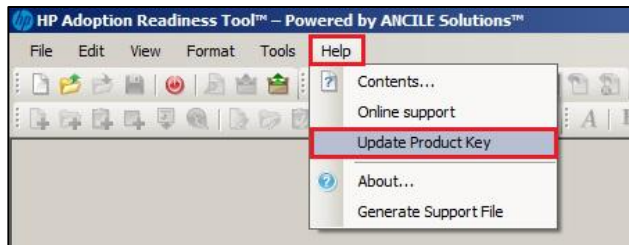
## Update Product Key

Follow these steps if you only need to update a previously installed HP ART Product Key (for example, from a temporary key to a permanent key).

1. From the **HP ART Quick Start Menu**, select the **Go to editor** option.



2. From the **Help** menu, select the **Update Product Key** option.





3. Enter the **Company Name** and **Product Key** and click **OK**.

Product Key...

**hp** ART  
Adoption Readiness Tool

Please enter your company name and product key. Please note that the Company Name field is case-sensitive.

Company Name:  
ABC Company

Product Key:  
YRHYGC-DCKWVK-YFBDEB-ZXG9A5-QACRCQ-FG1234

OK Cancel

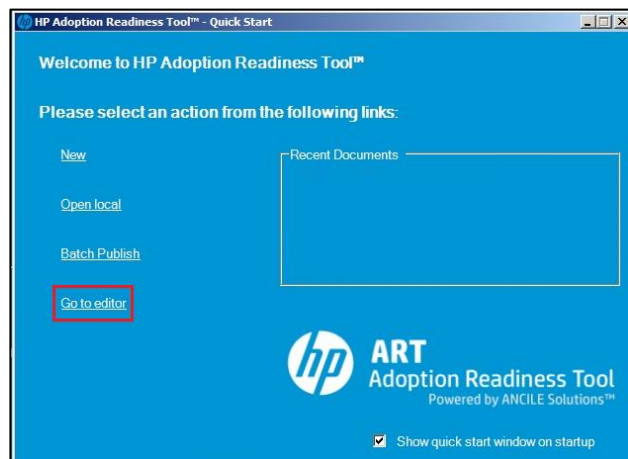
4. The new key is installed.



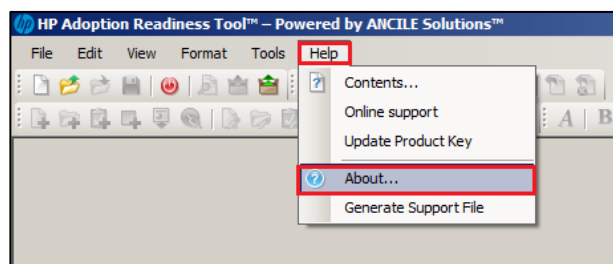
## Verify Installed Key

Follow these steps if you need to verify the license key installed on a machine.

1. From the **HP ART Quick Start Menu**, select the **Go to editor** option.



2. From the **Help** menu, select the **About...** option.



3. The HP ART license product key information displays.

