

HP ART 5.1 Website Guide



Quick Reference Guide

Rev. B

Use of this material to deliver training without prior written permission from HP is prohibited.

HP ART 5.1 Website Guide

Quick Reference Guide

Revision A

© Copyright 2013-2014 Hewlett-Packard Development Company, L.P.

The information contained herein is subject to change without notice. The only warranties for HP products and services are set forth in the express warranty statements accompanying such products and services. Nothing herein should be construed as constituting an additional warranty. HP shall not be liable for technical or editorial errors or omissions contained herein.

This is an HP copyrighted work that may not be reproduced without the written permission of HP. You may not use these materials to deliver training to any person outside of your organization without the written permission of HP.

Printed in the USA

HP ART 5.1 Website Guide

Quick Reference Guide

January 2014

Table of Contents

Introduction	1
HP ART Website Structure	3
ART Product Launch Page.....	4
Course Launch Page.....	5
Module Launch Page.....	6
Creating the ART Website	7
Step 1: Prepare the ART Files	7
Step 2: Create the Website (.uws) File	8
Step 3: Insert the Source Content Files	10
Step 4: Organize the Website.....	12
Step 5: Create the ART Product Launch Page	14
Step 6: Create the Course Launch Page	19
About the Module Launch Page	22
Step 7: Organize the Website with the New Launch Pages	23
Step 8: Batch Publish Source Files	24
Step 9: Publish the Website.....	26
Viewing the ART Website Locally.....	28
Mozilla FireFox.....	28
Google Chrome	28
Adding Related Documents to the HP ART Website.....	29

Introduction

The **HP Adoption Readiness Tool (HP ART)** is an innovative authoring tool that allows consultants and clients to create customized training, documentation and support content, whether starting with HP prebuilt content or creating new material. As a single source, multiple output, object recognition technology, HP ART dramatically reduces content development time and improves software adoption.

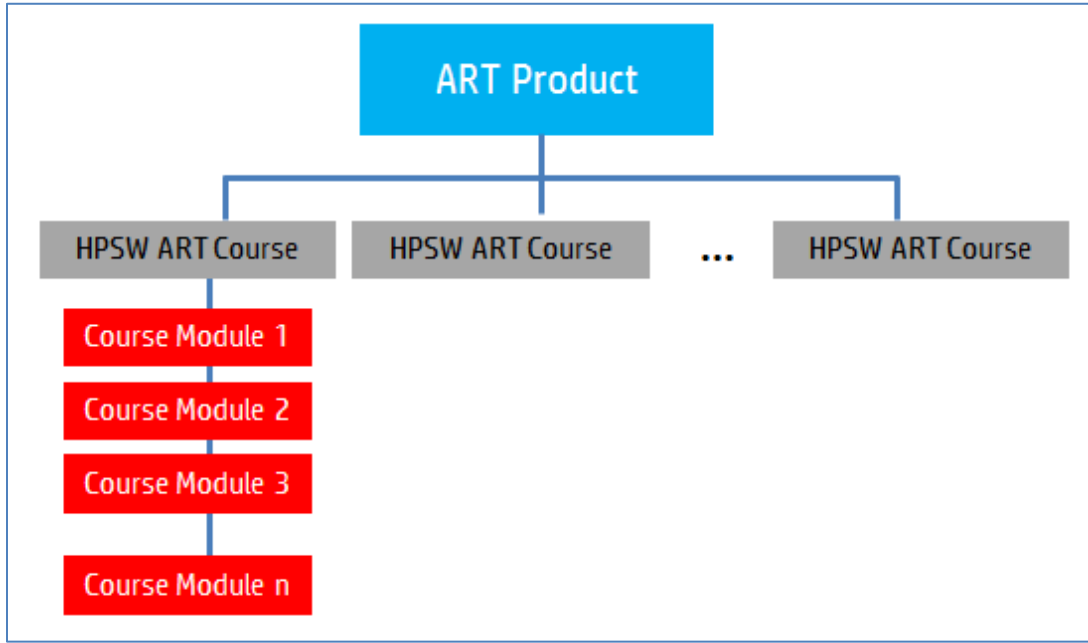
This guide contains high-level step-by-step instructions to create the HP ART website. This guide is designed as a supplemental support document only and is not intended to be a replacement for training.

For additional information on ART and ART Training and Services, contact your HPSW Sales Representative today or contact hpssoftware.art@hp.com for further information.

This document is updated based on consumer feedback. Please check the Software [Support Online \(SSO\)](#) HP Software Product Manuals page to ensure you have the current version.

HP ART Website Structure

The HP ART website is organized into three levels, each represented by a separate web page.



ART Product Launch Page

The screenshot shows the HP Adoption Readiness Tool (ART) website. At the top left is the HP Software Education logo. To its right, the text reads "HP Adoption Readiness Tool (ART)" and "Powered by ANCILE Solutions". Below this is a breadcrumb trail: "HP Adoption Readiness Tool (HP ART)". The main content area is split into two columns. The left column is titled "Select a Course" and contains a single link: "Cloud Service Automation 3.1". The right column is titled "Overview" and contains the text: "HP Adoption Readiness Tool (ART) is a learning and performance support solution accessible anytime, anywhere to help ensure your effective use of the software." Below the overview is a section titled "Prerequisites" with a bulleted list: "High speed internet connection", "Web Browser (IE 7.0+; Mozilla Firefox 17+; Google Chrome 24; or Safari 5.0)", and "Adobe Acrobat Reader 9.x, 10.x, or XI". At the bottom of the right column, it says "To begin, select a course from the left navigation." A footer at the bottom of the page reads "© Copyright 2013 HP Software Education. All Rights Reserved. Powered by Ancile."

The top level of the ART website is the ART product. The ART product web page introduces you to ART. This page includes a short introduction to ART, as well as the prerequisites required to view ART content. You can access each HP Software ART course included in the website from the left navigation menu of the ART product launch page under the Select a Course heading.

Important: When referring to the ART website, do not confuse the term “course” with the (.ulc) ART Developer Kit source file. The courses listed on the ART product launch page represent HP Software ART content, for example, the Cloud Service Automation 3.1 ART course or the HP Service Manager 9.30 ART course.


Course Launch Page

The screenshot shows the HP Software Education website interface. At the top left is the HP logo and 'Software Education' text. To the right is the title 'HP Adoption Readiness Tool (ART)' with the subtitle 'Powered by ANCILE Solutions'. Below this is a breadcrumb trail: '< > HP Adoption Readiness Tool (HP ART) / Cloud Service Automation 3.1'. The main content is split into two columns. The left column is titled 'Select a Module' and contains a list of nine blue links: 'Introduction', 'CSA Primer', 'Service Design Essentials', 'CSA Operations Essentials', 'Introduction to Operations Orchestration', 'Introduction to Server Automation', 'Introduction to uCMDB', 'Introduction to SiteScope', and 'Introduction to Network Automation'. The right column is titled 'Overview' and contains the text: 'The Cloud Service Automation (CSA) 3.1 ART course is comprised of 9 modules and is targeted for all users of the CSA 3.1 product.' Below this is a section titled 'Course Objectives' with the text 'At the end of the course, you will be able to:' followed by a list of four bullet points: 'Describe CSA features, functionality, and workflow.', 'Explain CSA roles, manage users, and deploy service designs.', 'Create resource offerings and designs.', and 'View and manage subscriptions and service instances for consumer organizations.' At the bottom of the right column is the text 'To begin, select a module from the left navigation.' A footer at the very bottom of the page reads '© Copyright 2013 HP Software Education. All Rights Reserved. Powered by Ancile.'

The second level of the ART website is the course web page. The course web page introduces the selected HP Software ART course. In the example above, the Cloud Service Automation (CSA) 3.1 ART course launch page is displayed. The course launch page includes an overview of the HP Software ART course, including the learning objectives.

All HP Software ART courses consist of several modules. You can access the modules that are included in the selected course from the left navigation menu under the Select a Module heading.

Module Launch Page



HP Adoption Readiness Tool (ART)
Powered by ANCILE Solutions

[<](#) [>](#) HP Adoption Readiness Tool (HP ART) / Cloud Service Automation 3.1 / Introduction to Operations Orchestration

Introduction to Operations Orchestration

Overview

This module provides an introduction to Operations Orchestration. Click the Launch Module button below to view the eLearning course module, or quickly master a specific task by launching a Simulation or Job Aid.

Launch Module

Launch Simulation

- [Log in and Navigate the OO Interface](#)
- [Monitor a Flow Run](#)
- [Run a Flow and Evaluate the Results](#)
- [Browse and Search the Flow Library](#)
- [View the Flow Run Results and Report](#)

Launch Job Aid

- [Log in and Navigate the OO Interface](#)
- [Monitor a Flow Run](#)
- [Run a Flow and Evaluate the Results](#)
- [Browse and Search the Flow Library](#)
- [View the Flow Run Results and Report](#)

© Copyright 2013 HP Software Education. All Rights Reserved. Powered by Ancile.

The Module launch page provides access to the ART content. You can either launch the e-learning course module directly by clicking the Launch Module button or, to quickly master a specific task, by launching a simulation or job aid within the Launch Simulation or Launch Job Aid options.

Creating the ART Website

When you purchase an HP Software ART course, the ART website output files are included in the content package within the output folder.

To create your own ART website, or customize an existing website, you do the following:

1. Prepare the ART files.
 2. Create the website (.us) file.
 3. Insert the source content files.
 4. Organize the website.
 5. Create the ART product launch page.
 6. Create the course launch page.
 7. Organize the website with the new launch pages.
 8. Batch publish source files.
 9. Publish the website.
-

Step 1: Prepare the ART Files

Before creating the ART website, it is important to organize the ART content into the following folder structure:

ART_Project

 source

 module1

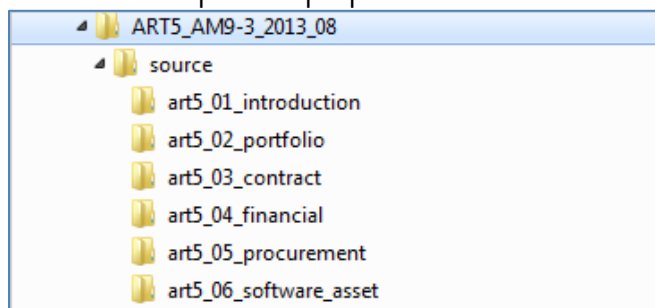
 (folder containing the course and recording source files for module 1)

 module2

 (folder containing the course and recording source files for module 2)

 ...

Below is a sample ART project folder for the HP Asset Manager 9.30 ART course:

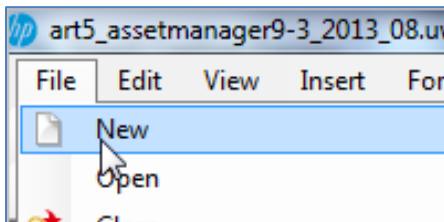


For each module, the module folder contains all the course (.ulc) and recording (.udc) source files:

art5_01_introduction-to-asset-manager_...	7/2/2013 2:14 PM	HP ART Course	226,969 KB
art5_01_apply-simple-filters_am9-3.udc	7/2/2013 9:44 AM	HP ART Document	1,107 KB
art5_01_apply-simple-filters-windows_a...	7/2/2013 1:52 PM	HP ART Document	3,935 KB
art5_01_course-tour_am9-3.udc	7/2/2013 1:38 PM	HP ART Document	6,326 KB
art5_01_create-a-favorite_am9-3.udc	7/2/2013 9:46 AM	HP ART Document	1,645 KB
art5_01_create-a-query_am9-3.udc	7/2/2013 9:47 AM	HP ART Document	1,859 KB
art5_01_create-a-query-windows_am9-3...	7/2/2013 9:48 AM	HP ART Document	4,669 KB
art5_01_create-a-statistics-chart_am9-3.u...	7/2/2013 9:48 AM	HP ART Document	682 KB
art5_01_create-a-statistics-chart-window...	7/2/2013 9:49 AM	HP ART Document	1,480 KB
art5_01_export-lists_am9-3.udc	7/2/2013 9:50 AM	HP ART Document	1,111 KB
art5_01_export-lists-windows_am9-3.udc	7/2/2013 9:50 AM	HP ART Document	3,325 KB
art5_01_navigating-interface_am9-3.udc	7/2/2013 9:51 AM	HP ART Document	622 KB
art5_01_navigating-interface-windows_a...	7/2/2013 9:52 AM	HP ART Document	2,570 KB
art5_01_web-client-login_am9-3.udc	7/2/2013 9:52 AM	HP ART Document	1,046 KB
art5_01_windows-client-login_am9-3.udc	7/2/2013 9:53 AM	HP ART Document	1,296 KB

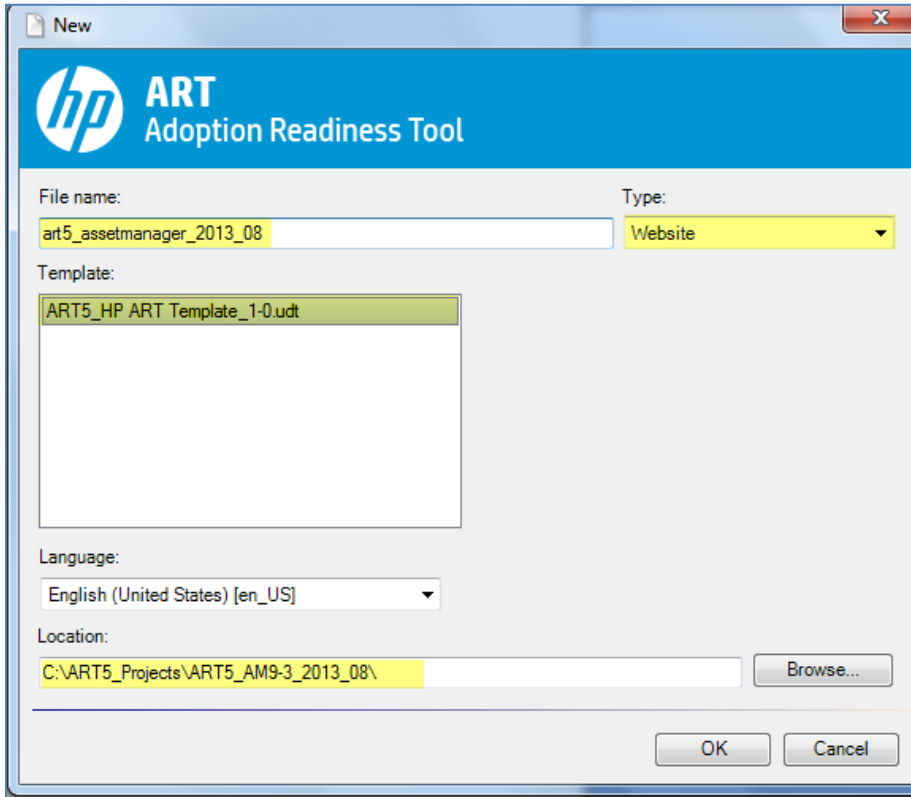
Step 2: Create the Website (.uws) File

Select File>New from the ART editor window.

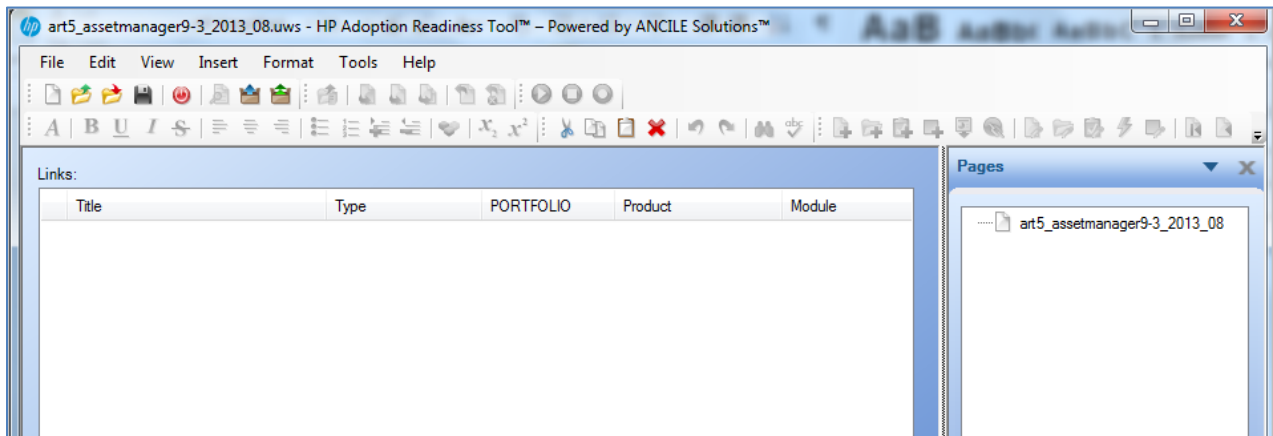


Within the New window, populate the following fields and click the OK button:

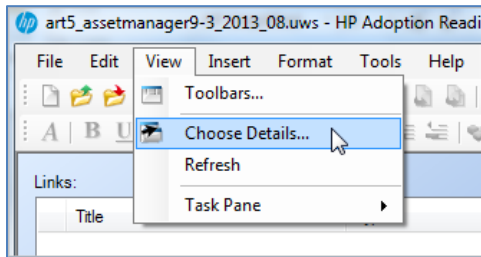
File name	Enter the name of the website (.uws) file.
Type	Select Website from the drop-down menu.
Template	Select the desired template.
Language	Select the desired language.
Location	Specify the location to store the website (.uws) file.



The ART editor displays the new website file.



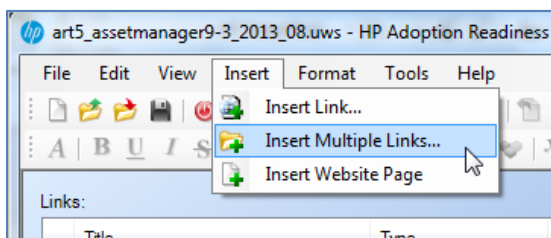
If this is the first time you are creating a website, select View>Choose Details from the ART editor.



Within the Choose Details window, validate that the PORTFOLIO, Product, and Module columns are selected and click the OK button.

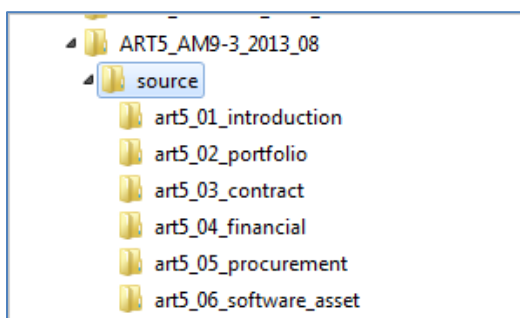
Step 3: Insert the Source Content Files

Select Insert>Insert Multiple Links from the ART editor menu.

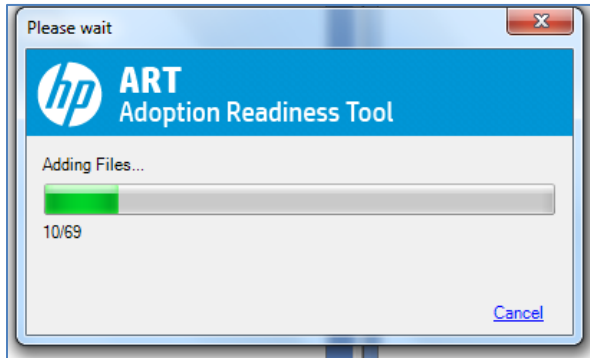


Navigate to the source folder of your project and click the OK button.

Note: All source files located within the source folder are imported into the website.



A progress menu displays during the import process.



The Links window pane lists each file. Notice that each file is categorized by PORTFOLIO, Product, and Module. HP ART creates the website structure based on how you configure the properties for each file. For this reason, it is very important to properly complete the properties for each file.

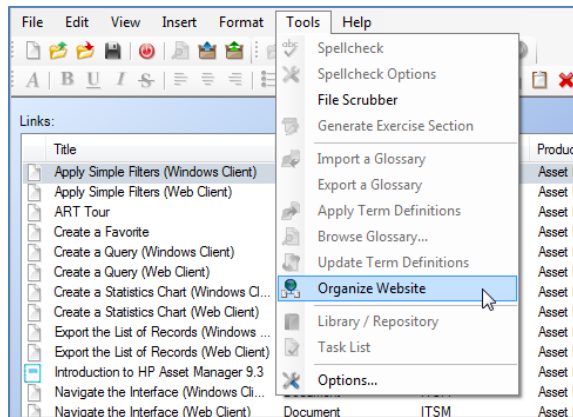
Links:

Title	Type	PORTFOLIO	Product	Module
Apply Simple Filters (Windows Client)	Document	ITSM	Asset Manager	Introduction
Apply Simple Filters (Web Client)	Document	ITSM	Asset Manager	Introduction
Create a Favorite	Document	ITSM	Asset Manager	Introduction
Create a Query (Windows Client)	Document	ITSM	Asset Manager	Introduction
Create a Query (Web Client)	Document	ITSM	Asset Manager	Introduction
Create a Statistics Chart (Windows Client)	Document	ITSM	Asset Manager	Introduction
Create a Statistics Chart (Web Client)	Document	ITSM	Asset Manager	Introduction
Export the List of Records (Windows Client)	Document	ITSM	Asset Manager	Introduction
Export the List of Records (Web Client)	Document	ITSM	Asset Manager	Introduction
Introduction to HP Asset Manager	Course	ITSM	Asset Manager	Introduction
Navigate the Interface (Windows Client)	Document	ITSM	Asset Manager	Introduction
Navigate the Interface (Web Client)	Document	ITSM	Asset Manager	Introduction
Client Login (Web Client)	Document	ITSM	Asset Manager	Introduction
Client Login (Windows Client)	Document	ITSM	Asset Manager	Introduction
Associate a Portfolio Item (Windows Client)	Document	ITSM	Asset Manager	Portfolio Management
Associate a Portfolio Item (Web Client)	Document	ITSM	Asset Manager	Portfolio Management
Create a Model (Windows Client)	Document	ITSM	Asset Manager	Portfolio Management
Create a Model (Web Client)	Document	ITSM	Asset Manager	Portfolio Management
Create an Asset (Windows Client)	Document	ITSM	Asset Manager	Portfolio Management
Create an Asset (Web Client)	Document	ITSM	Asset Manager	Portfolio Management
Create a Batch (Windows Client)	Document	ITSM	Asset Manager	Portfolio Management

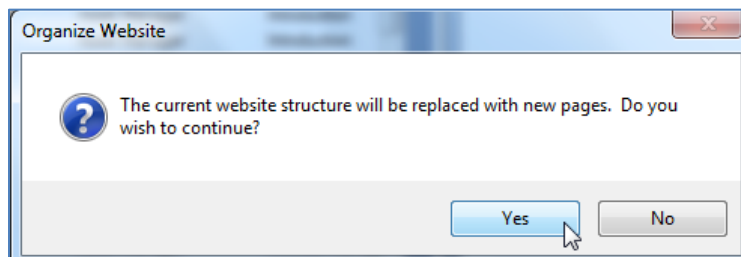
Step 4: Organize the Website

ART uses the Product and Module property values of each file to organize the structure of the website.

Select Tools>Organize Website from the editor menu.

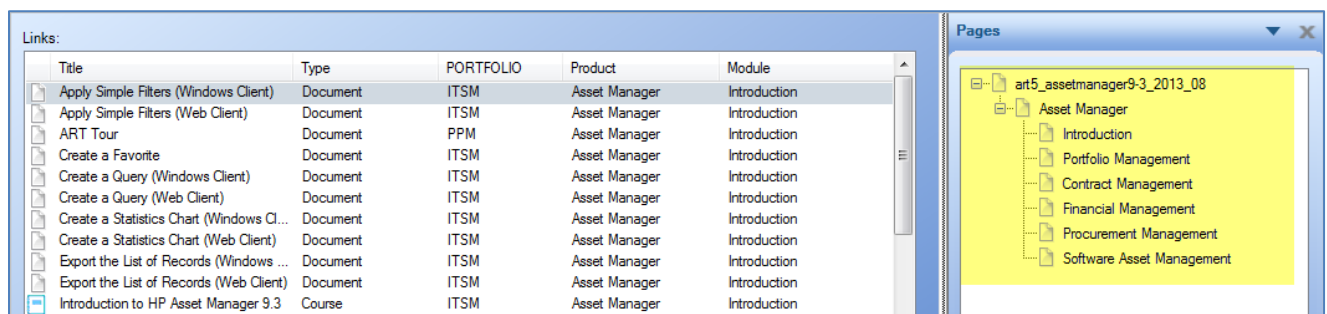


A confirmation message displays. Click the Yes button.

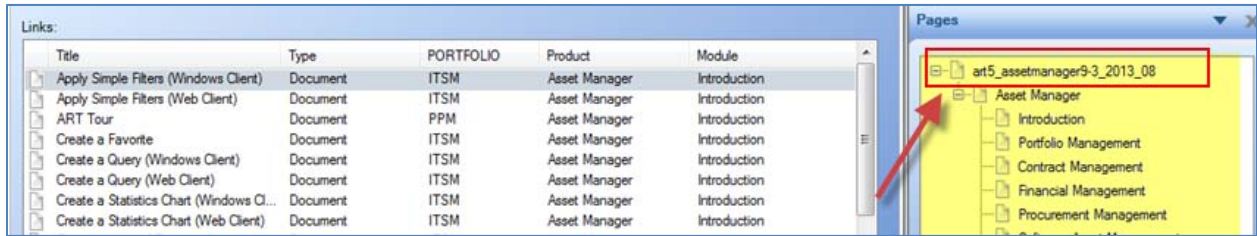


The new organization of the website displays within the Pages pane. The three organizational levels include:

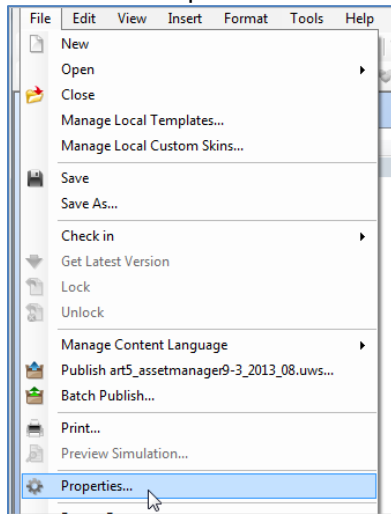
- The root .uws file
- The HP Software ART course (Asset Manager in this example)
- All modules within the ART course



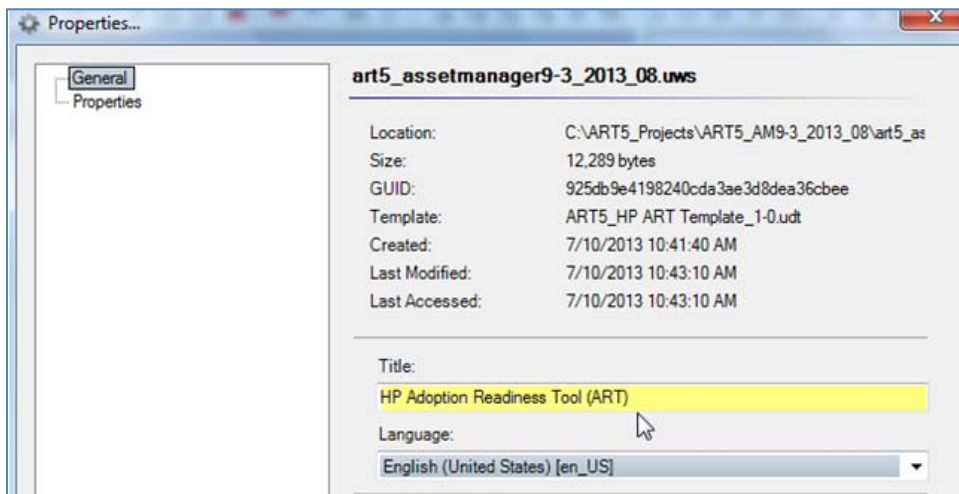
By default, the root page is given the same name as the .uws file. HP recommends that you change the name to easily identify the course.



Select File>Properties from the editor menu.

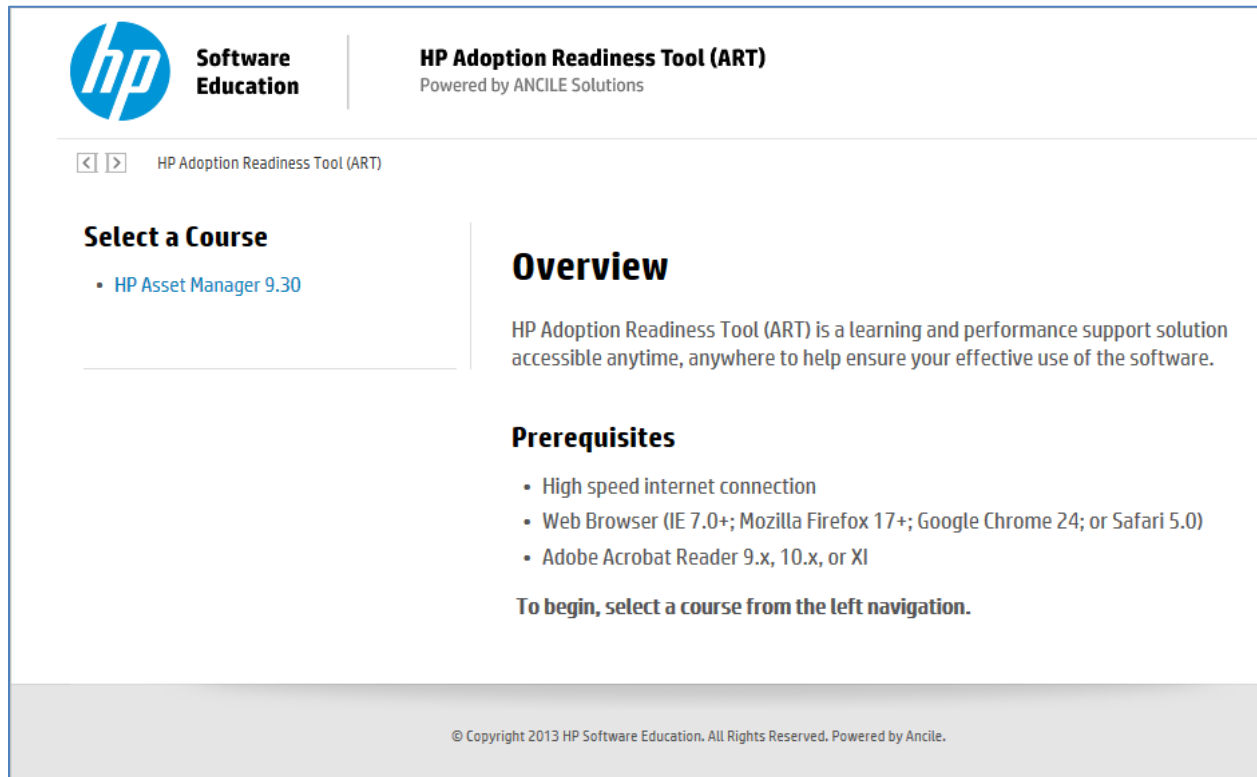


Within the Properties window, edit the Title field with the desired name.



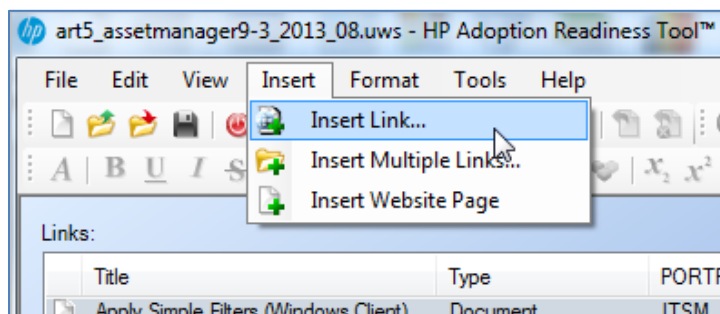
Step 5: Create the ART Product Launch Page

The ART product page is the first page that displays when the ART website is launched.



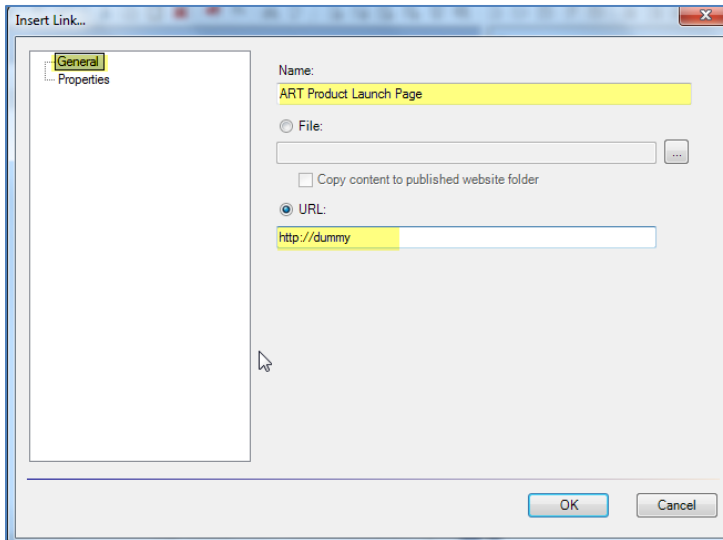
The ART product launch page is a logical link, not a physical web page. You create a link and configure its properties with the information you want to display on the launch page. When you publish the course, HP ART pulls the property information and formats it to create the launch page.

To create the ART product launch page, select Insert>Insert Link from the editor menu.



Within the General section of the Insert Link window, populate the following fields as shown:

Name	ART Product Launch Page
URL	http://dummy

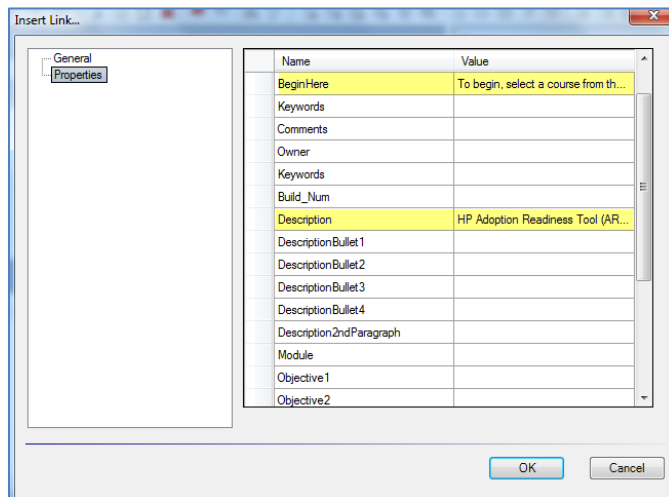


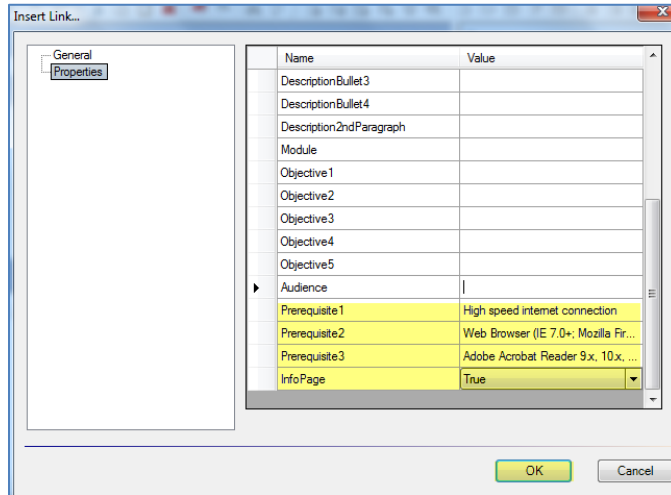
Navigate to the Properties section of the Insert Link window. Enter the information you want to display on the ART product launch web page.

You can use the following fields to populate the ART product launch web page. All fields are optional, with the exception of the InfoPage field. When you set the InfoPage field to **True**, ART recognizes the page as a launch page.

Property Field	Description
InfoPage	Must be set to True for all logical website launch pages
Description	First paragraph that is displayed
DescriptionBullet1	Description bullet list item #1
DescriptionBullet2	Description bullet list item #2
DescriptionBullet3	Description bullet list item #3
DescriptionBullet4	Description bullet list item #4
Description2ndParagraph	Second paragraph displayed after description bullets
Objective1	Objective list item #1
Objective2	Objective list item #2

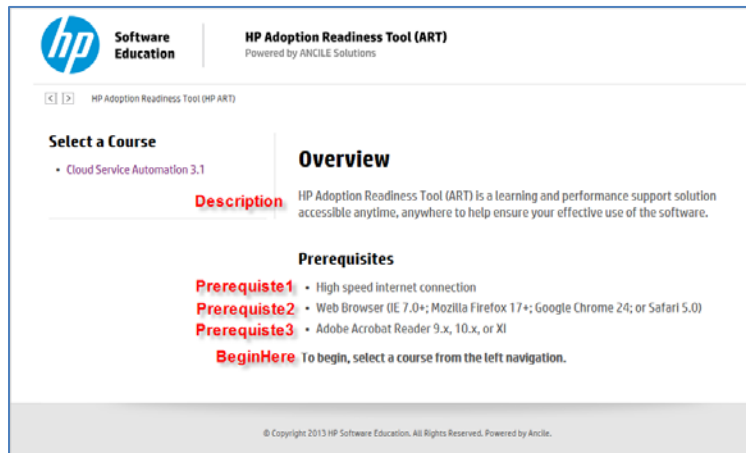
Property Field	Description
Objective3	Objective list item #3
Objective4	Objective list item #4
Objective5	Objective list item #5
Audience	Statement that describes the intended audience of the ART product
BeginHere	Instructions to learner on what to do after reading the product launch page contents. Appears last on the product launch page.
Prerequisite1	Prerequisite #1
Prerequisite2	Prerequisite #2
Prerequisite3	Prerequisite #3





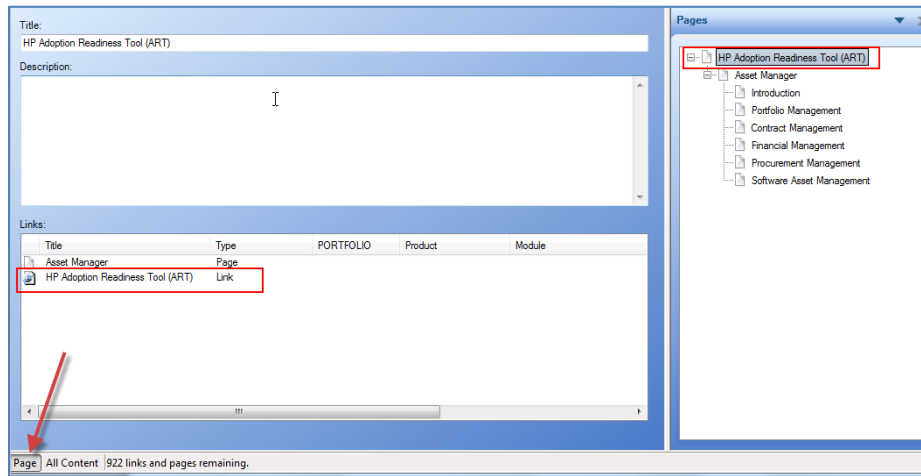
Click the OK button to save the properties.

The following information is included in the launch page for all prebuilt ART courses:



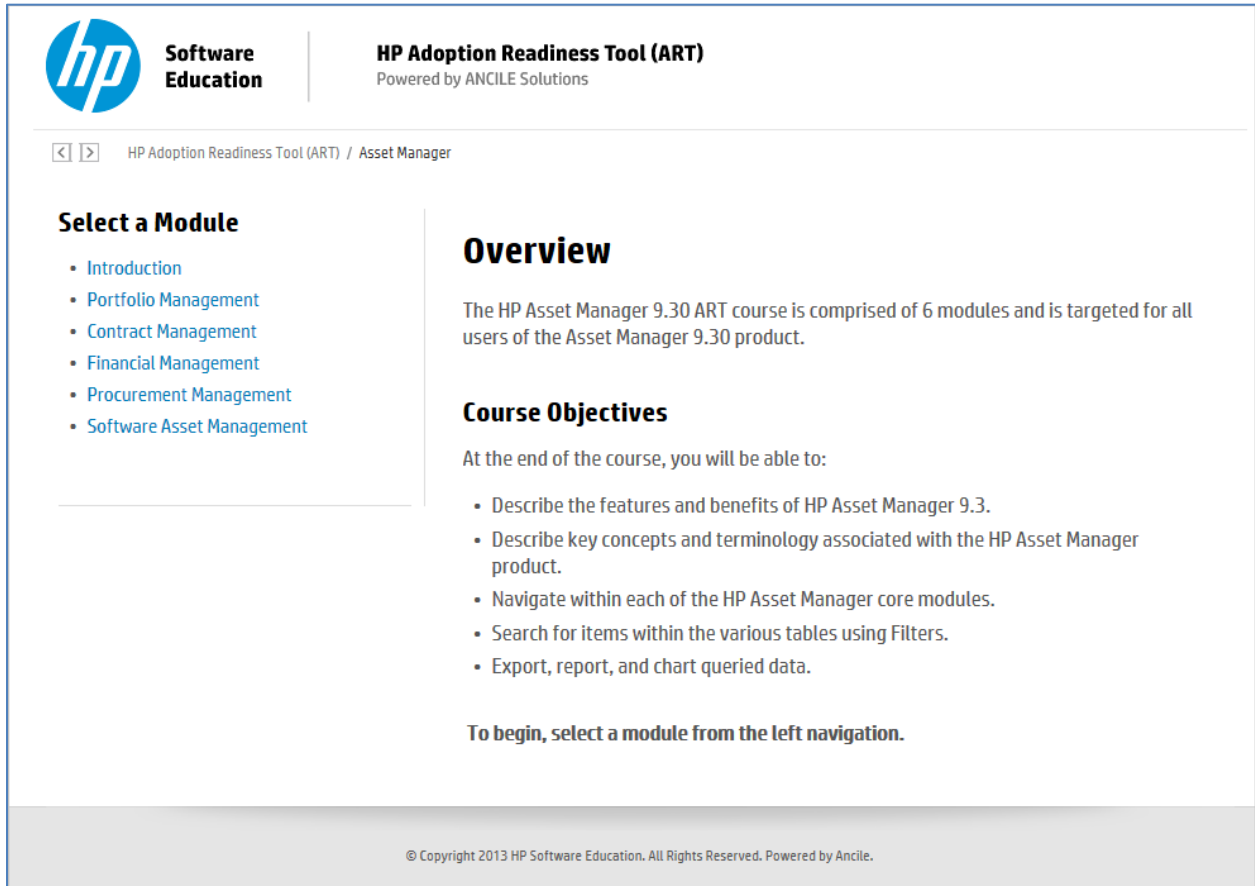
Prebuilt ART Product Launch Web Page Properties	
InfoPage	True
Description	HP Adoption Readiness Tool (ART) is a learning and performance support solution accessible anytime, anywhere to help ensure your effective use of the software.
Prerequisite 1	High speed Internet connection
Prerequisite 2	Web browser (IE 7.0+; Mozilla Firefox 17+; Google Chrome 24; or Safari 5.0)
Prerequisite 3	Adobe Acrobat Reader 9.x, 10.x, or XI
BeginHere	To begin, select a course from the left navigation.

You access the logical ART product page using the Page tab located on the bottom of the website (.uws) file. Notice that the page type is set to Link. To make changes to the virtual page properties, double-click the link to open the Properties window.



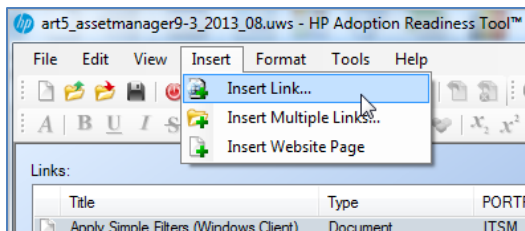
Step 6: Create the Course Launch Page

The course launch page displays when you select an HP Software ART course from the ART product launch page.



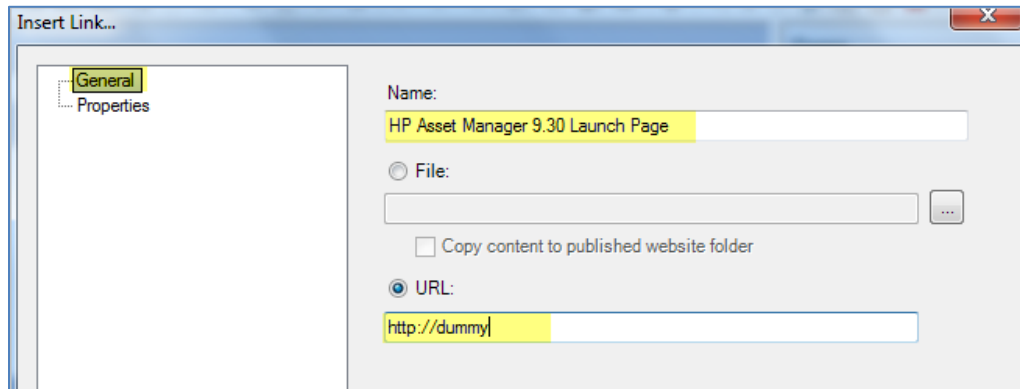
The process of creating the course launch web page is very similar to the ART product launch page.

Select Insert>Insert Link from the editor menu.



Within the General section of the Insert Link window, populate the following fields as shown:

Name	<name of ART course> Launch Page
URL	http://dummy




Navigate to the Properties section of the Insert Link window. Enter the desired information to be displayed on the course launch page.

Below are the property values that are typically entered for the course launch page.

Important: For the course launch page, you must select the product to ensure the launch page is organized at the HP Software course level.

Course Properties	
InfoPage	True (required for all launch pages)
Product	Product (select from the drop-down menu - used to organize website)
Description	High level overview of the HP Software ART course
Objective1	Course Objective 1
Objective2	Course Objective 2
Objective3	Course Objective 3
Objective4	Course Objective 4
Objective5	Course Objective 5
BeginHere	Provides instructions to learner on how to begin the course



Software Education

HP Adoption Readiness Tool (ART)
Powered by ANCILE Solutions

HP Adoption Readiness Tool (ART) / Asset Manager

Select a Module

- Introduction
- Portfolio Management
- Contract Management
- Financial Management
- Procurement Management
- Software Asset Management

Overview

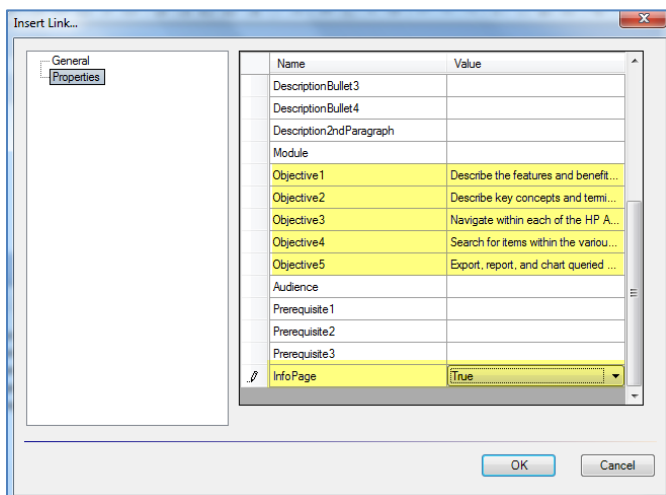
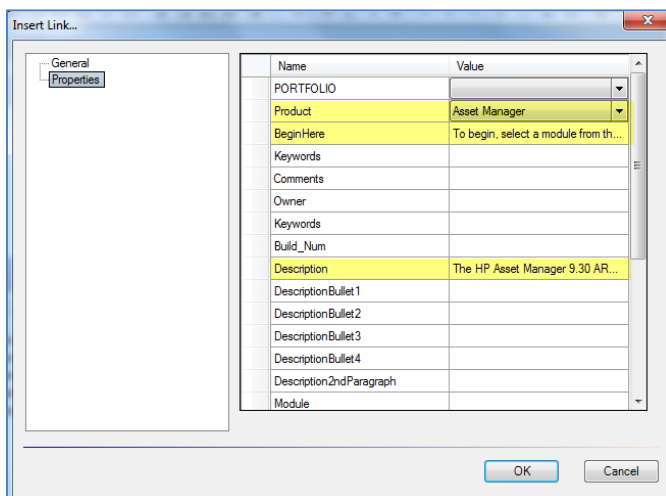
The HP Asset Manager 9.30 ART course is comprised of 6 modules and is targeted for all **Description** users of the Asset Manager 9.30 product.

Course Objectives

At the end of the course, you will be able to:

- Describe the features and benefits of HP Asset Manager 9.3. **Objective1**
- Describe key concepts and terminology associated with the HP Asset Manager **Objective2** product.
- Navigate within each of the HP Asset Manager core modules. **Objective3**
- Search for items within the various tables using Filters. **Objective4**
- Export, report, and chart queried data. **Objective5**

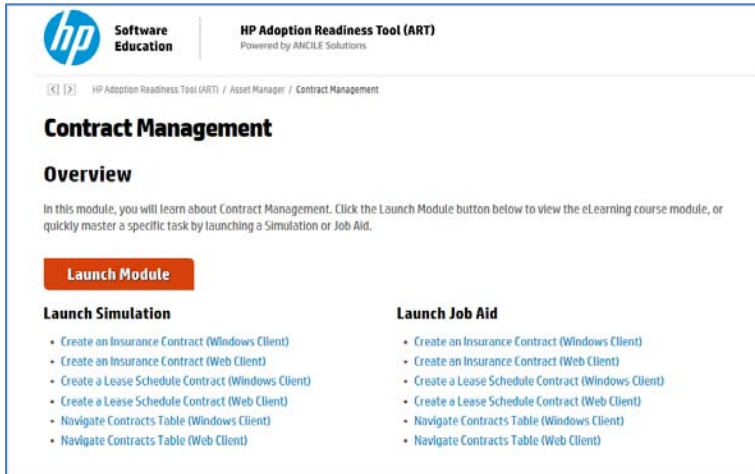
To begin, select a module from the left navigation. **BeginHere**



Click the OK button to save the properties.

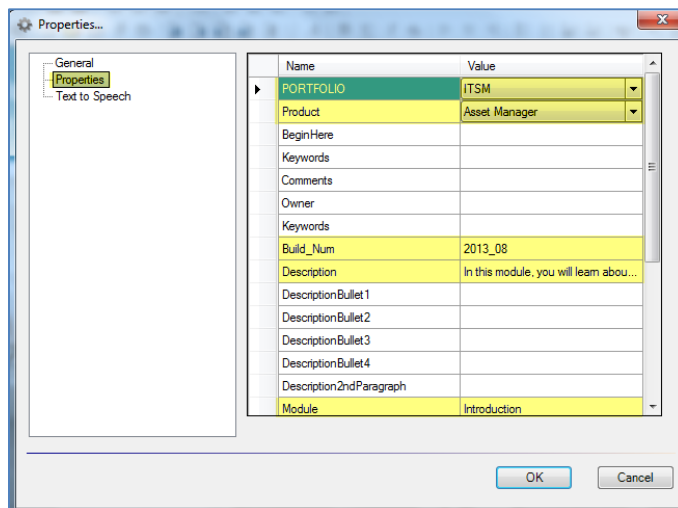
About the Module Launch Page

You manage the Module launch page within the Properties window of the module course (.ulc) source file. Authors populate the properties of each file during the development cycle.



Below are the property values that are typically entered for the Module launch web page:

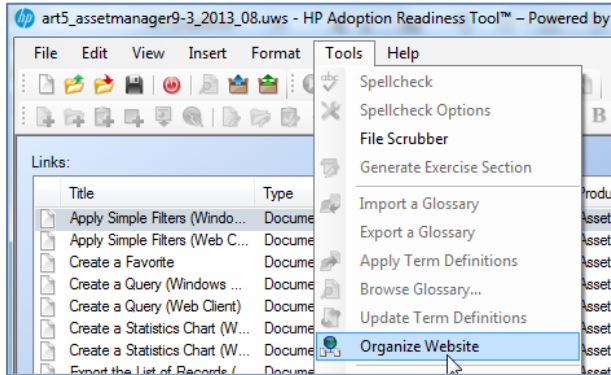
Module Properties	
PORTFOLIO	PORTFOLIO of the HP software product
Product	HP software product
Description	High level overview of the module.
Build_num	yyyy.mm file was last modified (not displayed on website, used for versioning only).
Module	Name of module. The Module field is used to organize the file during the website publishing process. You must populate the Module field for every file in the ART project.



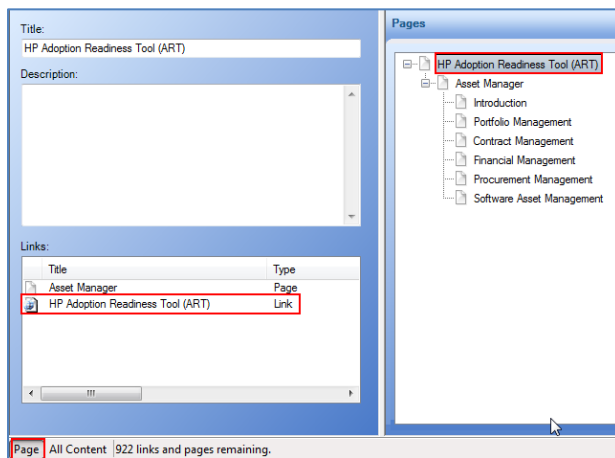
Step 7: Organize the Website with the New Launch Pages

After you create the Product and course launch pages, organize the website to pick up the newly added pages.

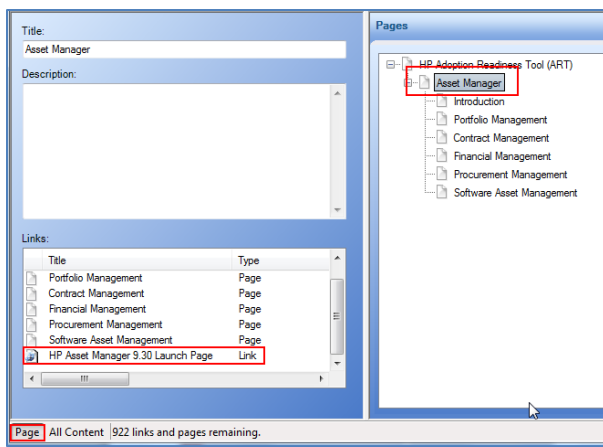
Select Tools>Organize Website from the editor menu.



The following shows the product launch page listed at the correct level:

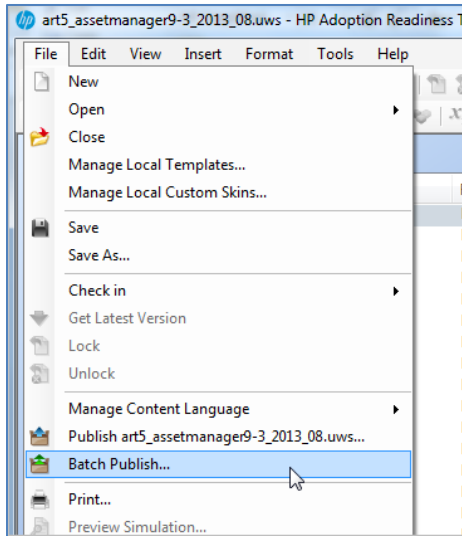


The following shows the course launch page listed at the correct level:

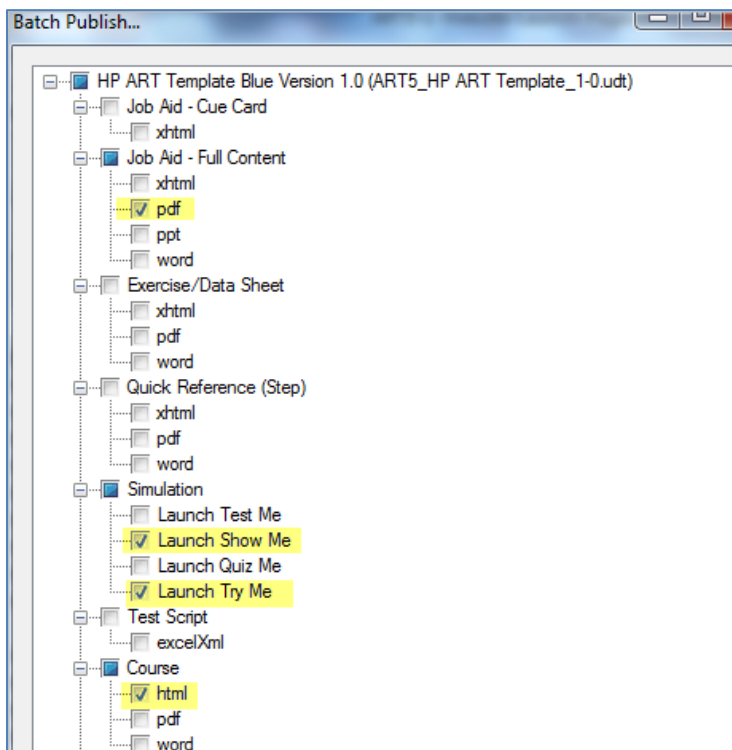


Step 8: Batch Publish Source Files

Next, you are ready to publish the source files. Select File>Batch Publish from the ART editor menu.

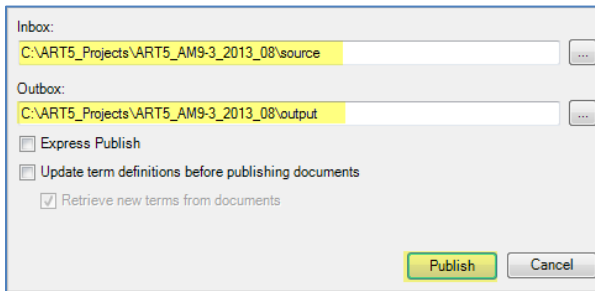


Within the Batch Publish window, select the following options to be published:

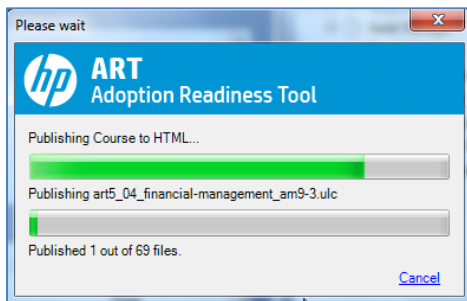


In the lower half of the Batch Publish window, populate the following fields and click the Publish button:

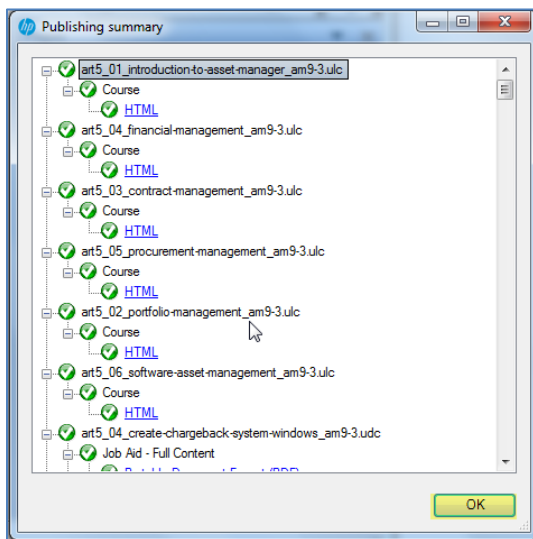
Inbox	Browse to the source folder.
Outbox	Create a new folder named output, under the project root folder.



The Batch Publish process will take several minutes, the exact time depending on the number of files in the website. A progress window will display with notification of the status.



When the batch publish process completes, the Publishing Summary window displays. Click the OK button.

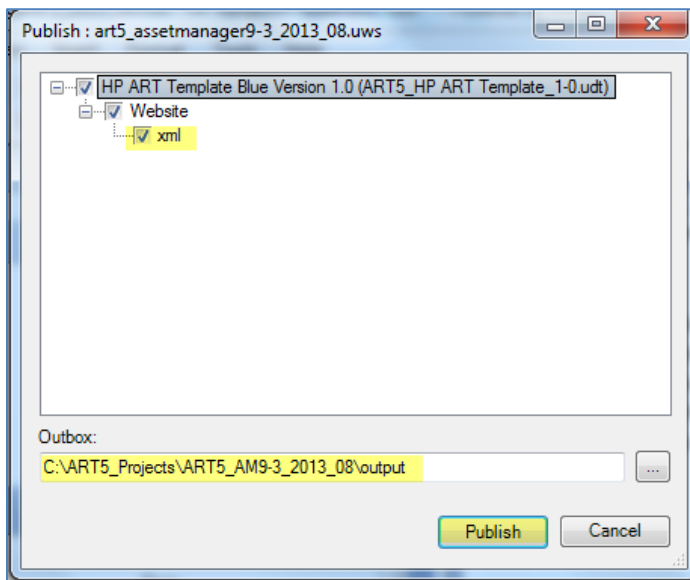


Step 9: Publish the Website

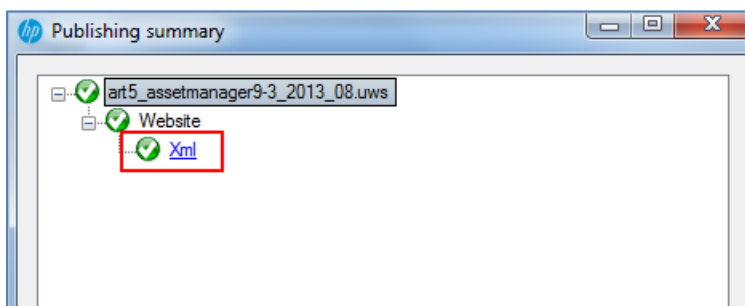
The batch publish process publishes the source files contained within the website. The final step is to publish the website file itself. Click the Publish icon from the ART editor toolbar.



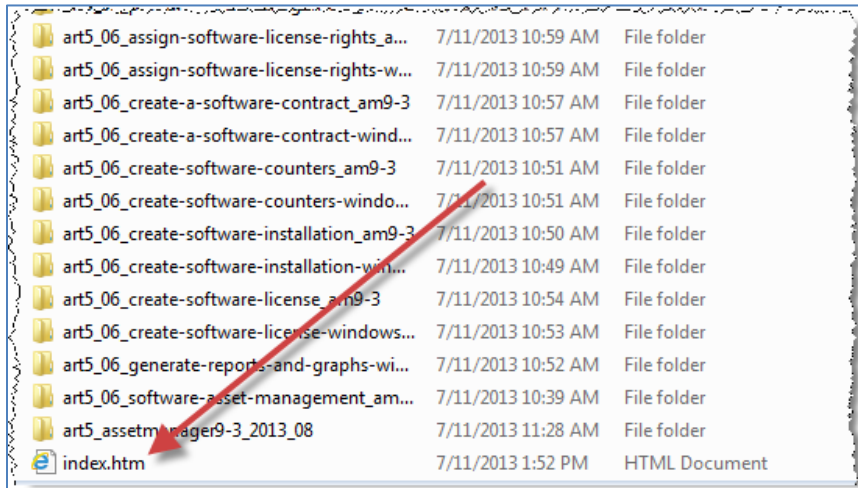
Within the Publish window, select the xml checkbox. Ensure the Outbox is directed to the output folder created during the batch publish.




When publishing is complete, click the Xml link to view the final website.



Note: All output files are stored within the output folder specified within the Publish window. Click the index.htm file to launch the website.





Software Education

HP Adoption Readiness Tool (ART)
Powered by ANCILE Solutions

HP Adoption Readiness Tool (ART)

Select a Course

- [HP Asset Manager 9.30](#)

Overview

HP Adoption Readiness Tool (ART) is a learning and performance support solution accessible anytime, anywhere to help ensure your effective use of the software.

Prerequisites

- High speed internet connection
- Web Browser (IE 7.0+; Mozilla Firefox 17+; Google Chrome 24; or Safari 5.0)
- Adobe Acrobat Reader 9.x, 10.x, or XI

To begin, select a course from the left navigation.

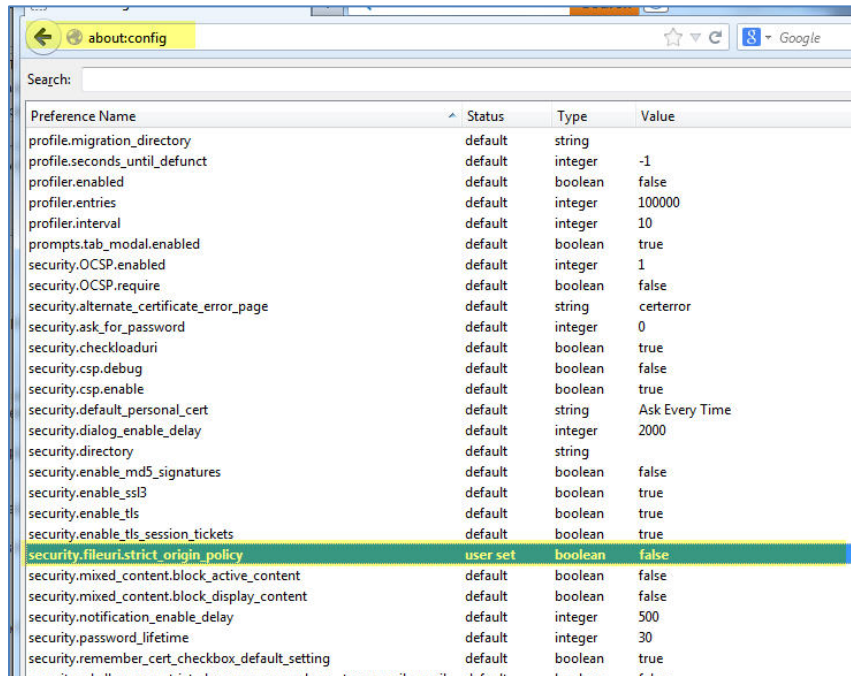
© Copyright 2013 HP Software Education. All Rights Reserved. Powered by Ancile.

Viewing the ART Website Locally

When viewing the ART website locally, you must enable browser security settings.

Mozilla FireFox

1. Navigate to about:config within the FireFox browser.
2. Change the preference security.fileuri.strict_origin_policy to False.



Google Chrome

1. Create a shortcut to Chrome. You can simply copy/paste the existing desktop shortcut, if you have one, or copy/paste the Chrome shortcut in the Start menu to your desktop.
2. Right-click the shortcut and go to Properties.
3. In the target field, add the following line:

```
--allow-file-access-from-files
```

For example, the entire target field will appear like the following:

```
C:\Users\UserName\AppData\Local\Google\Chrome\Application\chrome.exe --allow-file-access-from-files
```

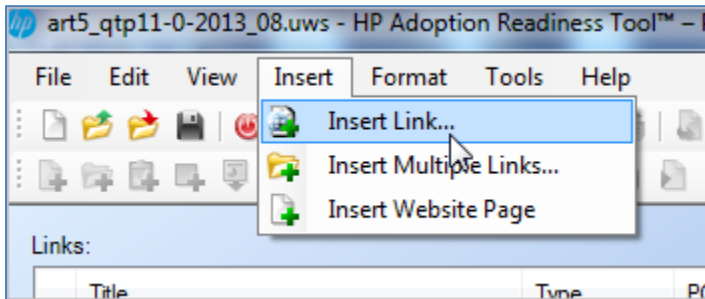
4. Click OK.

Adding Related Documents to the HP ART Website

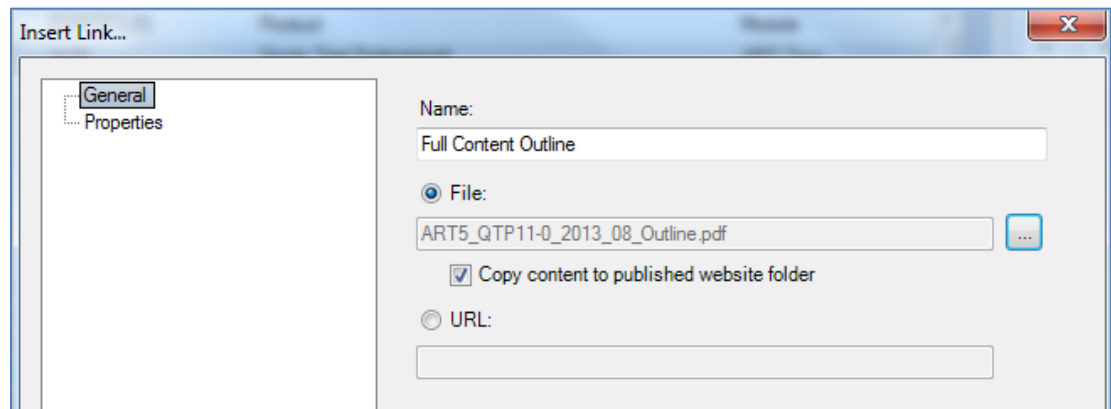
You can add external documents to the HP ART website at the product, course, and/or module levels. Once added to the website, they are embedded with the file and accessible to all users.

To add a document to the website, perform the following steps:

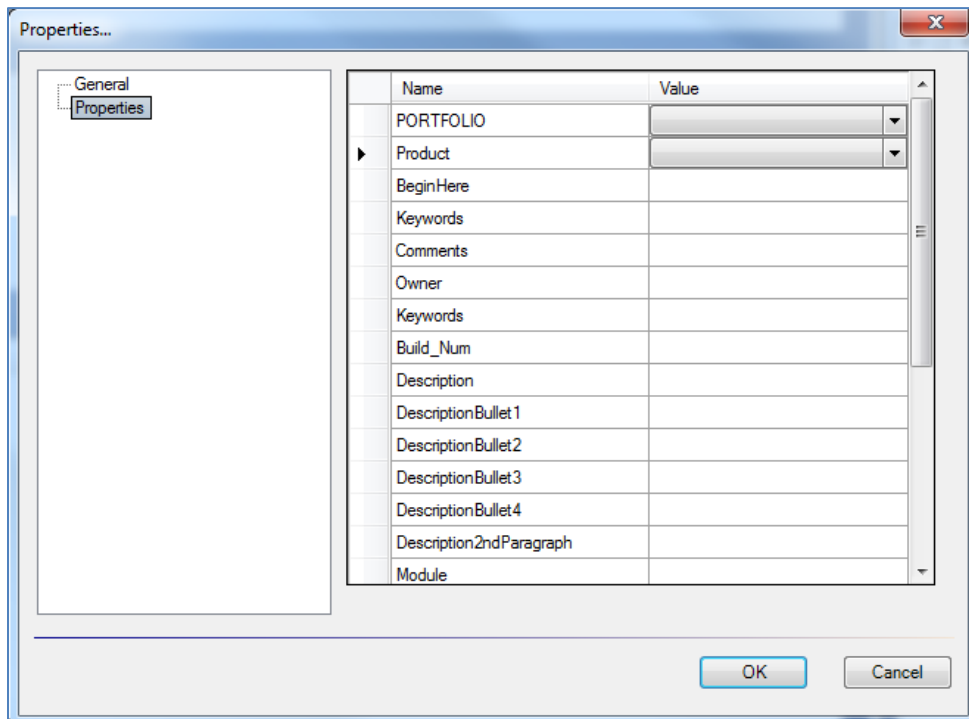
1. Open the website (.uws) file.
2. Select Insert>Insert link from the ART editor menu.



3. Within the General menu item:
 - a. Enter a title for the document to be displayed in the website, and navigate to the external file.
 - b. Select the Copy content to published website folder checkbox to ensure the document is stored with the published files.



4. The information required in the Properties menu item depends on where you would like the related document displayed on the website.



- a. To display the related document on the HP ART product launch page, leave all fields within the Properties window blank.

Software Education | **HP Adoption Readiness Tool (ART)**
Powered by ANCILE Solutions

HP Adoption Readiness Tool (ART)

Select a Course

- [HP Quick Test Professional 11.0](#)

Related Documents

- [Full Content Outline](#)

Overview

HP Adoption Readiness Tool (ART) is a learning and performance support solution accessible anytime, anywhere to help ensure your effective use of the software.

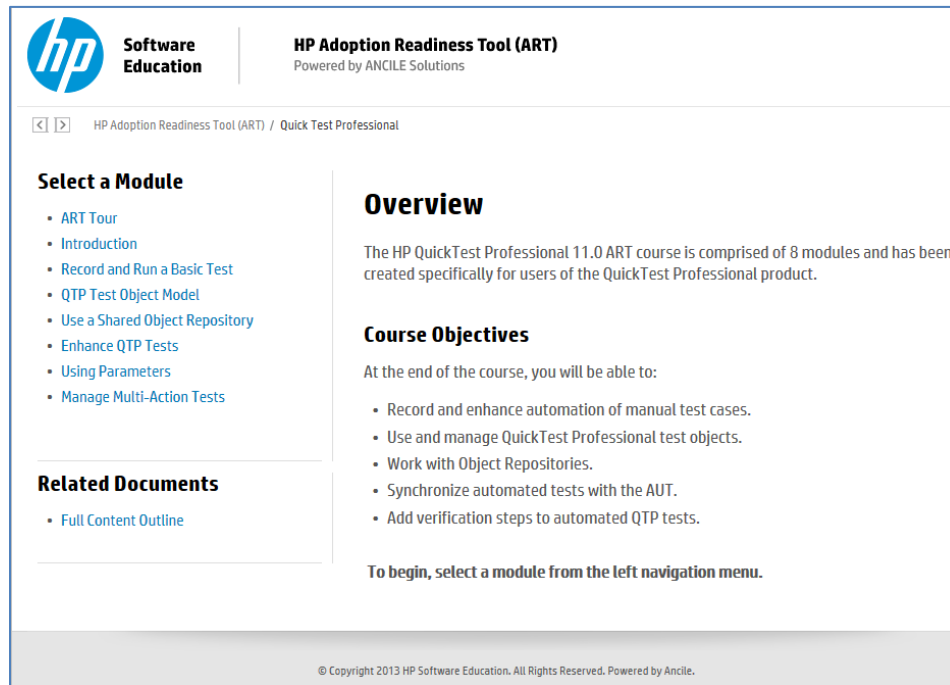
Prerequisites

- High speed internet connection
- Web Browser (IE 7.0+; Mozilla Firefox 17+; Google Chrome 24; or Safari 5.0)
- Adobe Acrobat Reader 9.x, 10.x, or XI

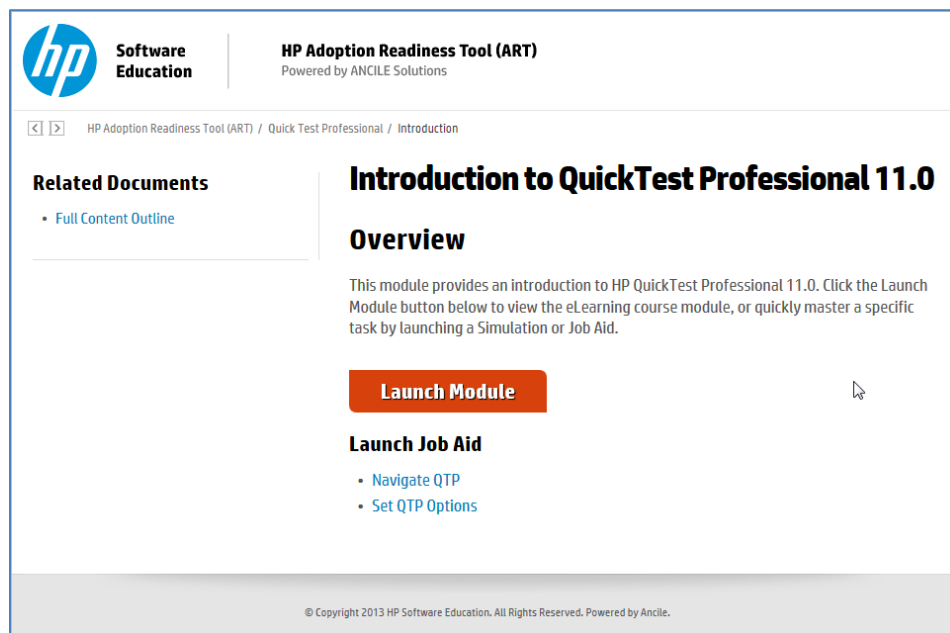
To begin, select a course from the left navigation menu.

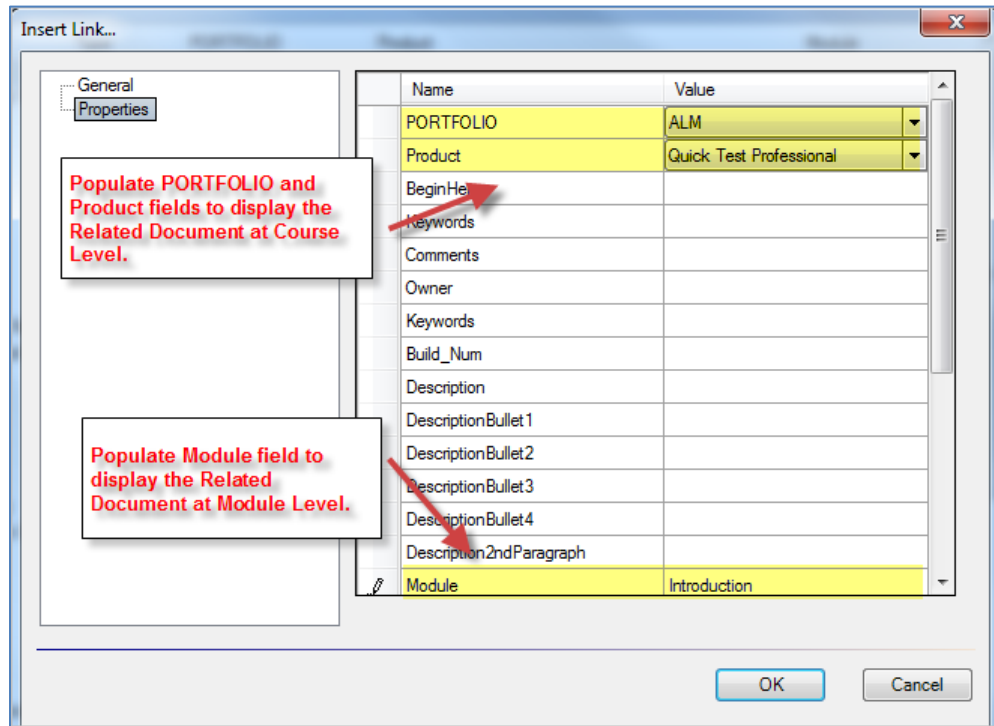
© Copyright 2013 HP Software Education. All Rights Reserved. Powered by Ancile.

- b. To display the related document at the Course level, select the PORTFOLIO, Product fields.

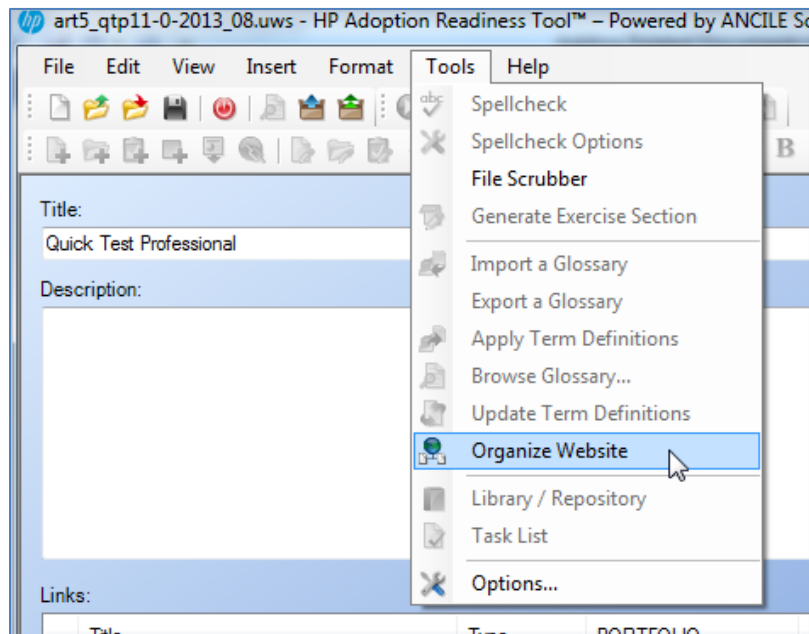


- c. To display the related document at the Module level, select the PORTFOLIO, Product fields, as well as the appropriate Module field.





Important: Whenever you change the website page properties, you must refresh the website organization using Tools>Organize Website.



This page is intentionally blank.