

# HP Server Automation

Software Version: 9.15

---

## Database and Middleware Automation Upgrade Guide

Document Release Date: August 2013  
Software Release Date: August 2013



## Legal Notices

### Warranty

The only warranties for HP products and services are set forth in the express warranty statements accompanying such products and services. Nothing herein should be construed as constituting an additional warranty. HP shall not be liable for technical or editorial errors or omissions contained herein.

The information contained herein is subject to change without notice.

### Restricted Rights Legend

Confidential computer software. Valid license from HP required for possession, use or copying. Consistent with FAR 12.211 and 12.212, Commercial Computer Software, Computer Software Documentation, and Technical Data for Commercial Items are licensed to the U.S. Government under vendor's standard commercial license.

### Copyright Notices

© Copyright 2013 Hewlett-Packard Development Company, L.P.

### Trademark Notices

Adobe® is a trademark of Adobe Systems Incorporated.

Intel® and Itanium® are trademarks of Intel Corporation in the U.S. and other countries.

Microsoft®, Windows®, Windows® XP are U.S. registered trademarks of Microsoft Corporation.

Oracle and Java are registered trademarks of Oracle and/or its affiliates.

UNIX® is a registered trademark of The Open Group.

## Documentation Updates

To check for recent updates or to verify that you are using the most recent edition of a document, go to:

**<http://support.openview.hp.com/selfsolve/manuals>**

This site requires that you register for an HP Passport and sign in. To register for an HP Passport ID, click the **New users - please register** link on the HP Passport login page.

You will also receive updated or new editions if you subscribe to the appropriate product support service. Contact your HP sales representative for details.

## Support

Visit the HP Software Support Online website at:

**<http://www.hp.com/go/hpsoftwaresupport>**

This website provides contact information and details about the products, services, and support that HP Software offers.

HP Software online support provides customer self-solve capabilities. It provides a fast and efficient way to access interactive technical support tools needed to manage your business. As a valued support customer, you can benefit by using the support website to:

- Search for knowledge documents of interest
- Submit and track support cases and enhancement requests
- Download software patches
- Manage support contracts
- Look up HP support contacts
- Review information about available services
- Enter into discussions with other software customers
- Research and register for software training

Most of the support areas require that you register as an HP Passport user and sign in. Many also require a support contract. To register for an HP Passport ID, go to:

**<http://h20229.www2.hp.com/passport-registration.html>**

To find more information about access levels, go to:

**[http://h20230.www2.hp.com/new\\_access\\_levels.jsp](http://h20230.www2.hp.com/new_access_levels.jsp)**

## Support Matrices

For complete support and compatibility information, see the support matrix for the relevant product release. All support matrices and product manuals are available here on the HP Software Support Online website:

**[http://support.openview.hp.com/sc/support\\_matrices.jsp](http://support.openview.hp.com/sc/support_matrices.jsp)**

You can also download the *HP Server Automation Support and Compatibility Matrix* for this release from the HP Software Support Online Product Manuals website:

**<http://support.openview.hp.com/selfsolve/manuals>**



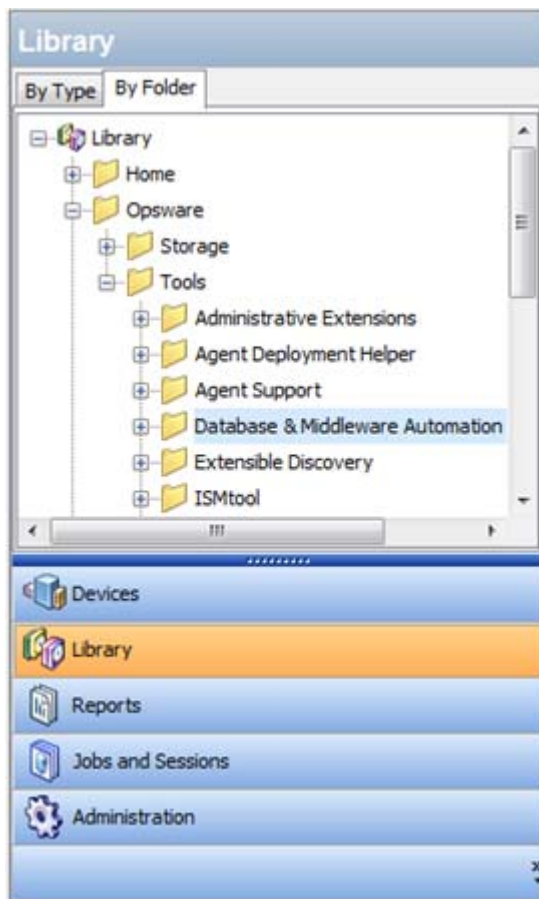
# Post Installation Steps for Database and Middleware Automation

After you upgrade to a new version of Server Automation(SA), you must perform the following procedure to enable Database and Middleware Automation (HP DMA) to run workflows in your upgraded SA environment.

- ▶ You must have permission to remediate software policy on the pertinent devices (see “Software Management Permissions” in the *HP Server Automation Administration Guide*).

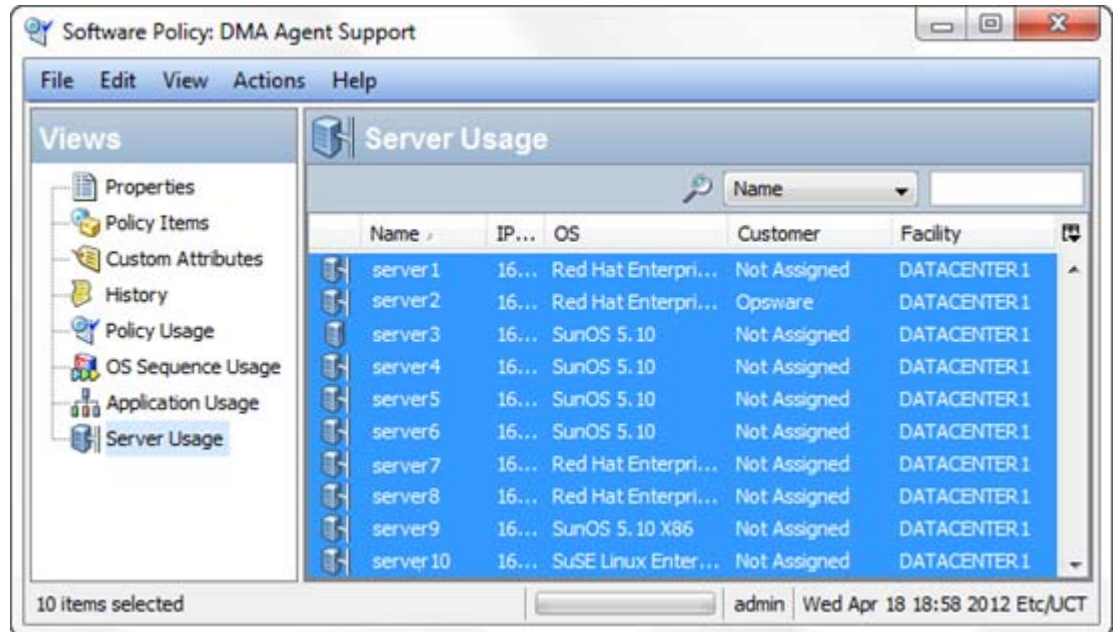
To enable HP DMA workflows to run after an SA upgrade:

- 1 In the SA client, go to the Library, and select the **By Folder** tab..
- 2 Expand the following folder: Opsware/Tools
- 3 Select Database & Middleware Automation.

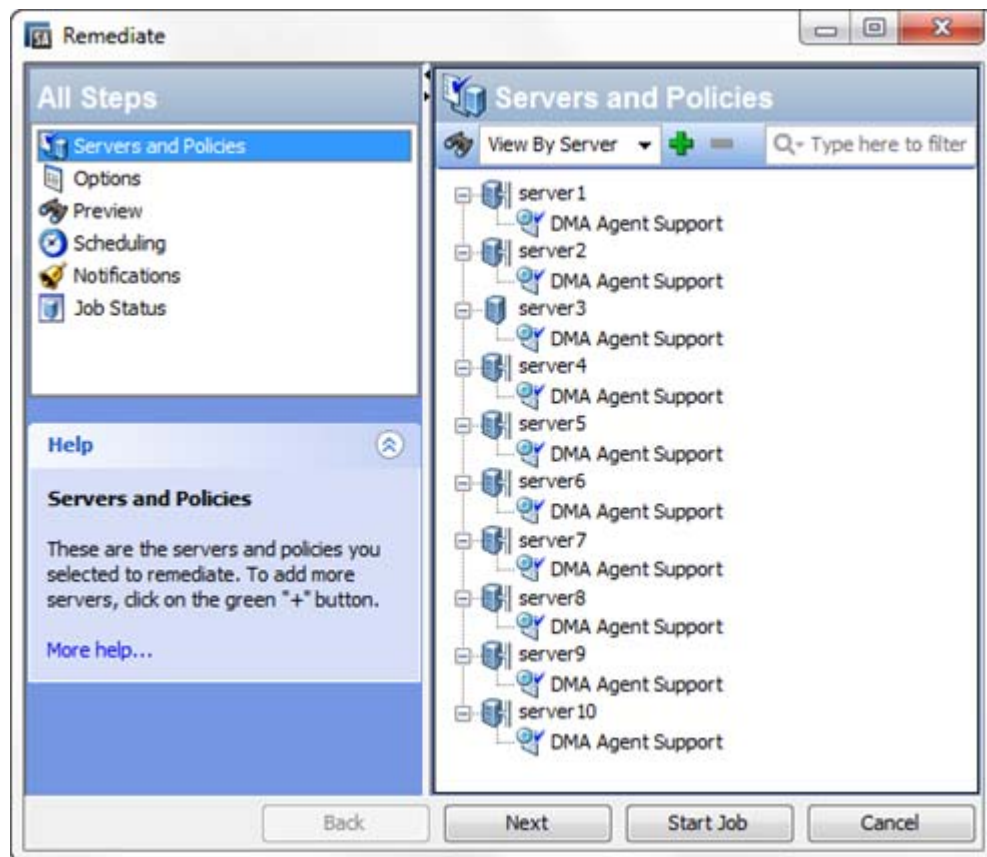


- 4 Open the DMA Agent Support software policy.
- 5 In the Views pane, select **Server Usage**.

- Click somewhere in the Server Usage pane, and press CTRL + A to select all the servers.



- Right click, and select **Remediate**.



- In the Remediate window, click **Start Job**.

After you perform this procedure, all SA managed servers that currently have the DMA Agent Support policy will be remediated with the updated version of that policy.