

# HP Systinet Plug-In for Visual Studio

For the Windows operating system

Software Version: 4.10

---

## User Guide

Document Release Date: April 2013

Software Release Date: April 2013



## Legal Notices

### Warranty

The only warranties for HP products and services are set forth in the express warranty statements accompanying such products and services. Nothing herein should be construed as constituting an additional warranty. HP shall not be liable for technical or editorial errors or omissions contained herein.

The information contained herein is subject to change without notice.

### Restricted Rights Legend

Confidential computer software. Valid license from HP required for possession, use or copying. Consistent with FAR 12.211 and 12.212, Commercial Computer Software, Computer Software Documentation, and Technical Data for Commercial Items are licensed to the U.S. Government under vendor's standard commercial license.

### Copyright Notice

© Copyright 1993-2013 Hewlett-Packard Development Company, L.P.

### Trademark Notices

Adobe™ is a trademark of Adobe Systems Incorporated.

Microsoft®, Windows®, Windows® XP and Windows 7® are U.S. registered trademarks of Microsoft Corporation.

Oracle and Java are registered trademarks of Oracle and/or its affiliates.

## Documentation Updates

The title page of this document contains the following identifying information:

- Software Version number, which indicates the software version.
- Document Release Date, which changes each time the document is updated.
- Software Release Date, which indicates the release date of this version of the software.

To check for recent updates or to verify that you are using the most recent edition of a document, go to:

**<http://h20230.www2.hp.com/selfsolve/manuals>**

This site requires that you register for an HP Passport and log on. To register for an HP Passport ID, go to:

**<http://h20229.www2.hp.com/passport-registration.html>**

Or click the **New users - please register** link on the HP Passport log on page.

You will also receive updated or new editions if you subscribe to the appropriate product support service. Contact your HP sales representative for details.

## Support

Visit the HP Software Support Online web site at:

**<http://www.hp.com/go/hpsoftwaresupport>**

This web site provides contact information and details about the products, services, and support that HP Software offers.

HP Software online support provides customer self-solve capabilities. It provides a fast and efficient way to access interactive technical support tools needed to manage your business. As a valued support customer, you can benefit by using the support web site to:

- Search for knowledge documents of interest
- Submit and track support cases and enhancement requests
- Download software patches
- Manage support contracts
- Look up HP support contacts
- Review information about available services
- Enter into discussions with other software customers
- Research and register for software training

Most of the support areas require that you register as an HP Passport user and sign in. Many also require a support contract. To register for an HP Passport ID, go to:

**<http://h20229.www2.hp.com/passport-registration.html>**

To find more information about access levels, go to:

**[http://h20230.www2.hp.com/new\\_access\\_levels.jsp](http://h20230.www2.hp.com/new_access_levels.jsp)**

## Disclaimer for PDF Version of Online Help

This document is a PDF version of the online help. This PDF file is provided so you can easily print multiple topics from the help information or read the online help in PDF format.

**Note:** Some topics do not convert properly to PDF, causing format problems. Some elements of online help are completely removed from the PDF version. Those problem topics can be successfully printed from within the online help.

---

## Contents

User Guide .....	1
Contents .....	6
About this Guide .....	8
Document Conventions .....	8
Documentation Updates .....	9
Support .....	9
Systinet Plug-In for Visual Studio .....	10
Overview .....	10
Usecases .....	10
Getting Started .....	12
Installing Systinet Plug-In for Visual Studio .....	12
Setting Up 2-way SSL .....	13
Exploring the Catalog .....	13
Search Results .....	14
Searching the Catalog .....	14
Artifact Detail View .....	15
Viewing Artifacts in HP Systinet .....	15
Using HP Systinet Navigator .....	16
Modifying Resources .....	17
Downloading HP Systinet Resources .....	17
Uploading HP Systinet Resources .....	18
Synchronizing Resources .....	19
Deleting HP Systinet Resources .....	20
Validating Resources .....	21
Setting Up Validation .....	21
Setting Up Policies .....	21
Updating Policies .....	22
Removing Policies .....	22

Ad Hoc Validation .....	22
Running Ad Hoc Validation .....	23
Viewing Ad Hoc Validation Results .....	23
Revalidating a Document .....	25
Exporting Reports .....	25
Setting Report Style .....	25
Adding Web References .....	26
Requesting Consumption of HP Systinet Artifacts .....	27
Requesting Lifecycle Approval .....	28

## About this Guide

Welcome to the HP Systinet Plug-In for Visual Studio Guide. This guide explains how to use the Systinet Plug-In for Microsoft Visual Studio with HP Systinet.

This guide contains the following chapters:

- ["Systinet Plug-In for Visual Studio" \(on page 10\)](#)
- ["Getting Started" \(on page 12\)](#)
- ["Exploring the Catalog" \(on page 13\)](#)
- ["Modifying Resources" \(on page 17\)](#)
- ["Validating Resources" \(on page 21\)](#)
- ["Adding Web References" \(on page 26\)](#)

## Document Conventions

This document uses the following typographical conventions:

<b>run.bat make</b>	Script name or other executable command plus mandatory arguments.
[--help]	Command-line option.
either   or	Choice of arguments.
<i>replace_value</i>	Command-line argument that should be replaced with an actual value.
{arg1   arg2}	Choice between two command-line arguments where one or the other is mandatory.
<b>java -jar hpsystinet.jar</b>	User input.
C:\System.ini	File names, directory names, paths, and package names.
a.append(b);	Program source code.
server.Version	Inline Java class name.
getVersion()	Inline Java method name.
<b>Shift+N</b>	Combination of keystrokes.
<b>Service View</b>	Label, word, or phrase in a GUI window, often clickable.
<b>OK</b>	Button in a user interface.
<b>New&gt;Service</b>	Menu option.



## Documentation Updates

This guide's title page contains the following identifying information:

- Software version number, which indicates the software version
- Document release date, which changes each time the document is updated
- Software release date, which indicates the release date of this version of the software

To check for recent updates, or to verify that you are using the most recent edition of a document, go to:

<http://h20230.www2.hp.com/selfsolve/manuals>

This site requires that you register for an HP Passport and sign-in. To register for an HP Passport ID, go to:

<http://h20229.www2.hp.com/passport-registration.html>

Or click the **New users - please register** link on the HP Passport logon page.

You will also receive updated or new editions if you subscribe to the appropriate product support service. For details, contact your HP sales representative.

## Support

You can visit the HP Software Support Web site at:

<http://www.hp.com/go/hpsoftwaresupport>

HP Software Support Online provides customer self-solve capabilities. It provides a fast and efficient way to access interactive technical support tools needed to manage your business. As a valued support customer, you can benefit by using the HP Software Support web site to:

- Search for knowledge documents of interest
- Submit and track support cases and enhancement requests
- Download software patches
- Manage support contracts
- Look up HP support contacts
- Review information about available services
- Enter into discussions with other software customers
- Research and register for software training

Most of the support areas require that you register as an HP Passport user and sign in. Many also require a support contract.

To find more information about access levels, go to:

[http://h20230.www2.hp.com/new\\_access\\_levels.jsp](http://h20230.www2.hp.com/new_access_levels.jsp)

To register for an HP Passport ID, go to:

<http://h20229.www2.hp.com/passport-registration.html>

## Systinet Plug-In for Visual Studio

HP Systinet enables your organization to manage the growth and development of your service infrastructure. HP Systinet Plug-In for Visual Studio bridges the gap between your development environment and HP Systinet.

This chapter introduces Systinet Plug-In for Visual Studio in the following sections:

- ["Overview " \(on page 10\)](#)
- ["Usecases " \(on page 10\)](#)

### Overview

HP Systinet Plug-In for Visual Studio is a set of features enabling you to integrate HP Systinet with your IDE.

Systinet Plug-In for Visual Studio contains the following features:

- **Search**  
Search and explore the HP Systinet Catalog to find the service definitions you require.  
For details, see ["Exploring the Catalog " \(on page 13\)](#).
- **Modify**  
Download resources from HP Systinet, modify them in your IDE, and then upload them back to HP Systinet.  
For details, see ["Modifying Resources " \(on page 17\)](#)
- **Add Web References**  
Add web references to your project from Catalog resources.  
For details, see ["Adding Web References " \(on page 26\)](#)
- **Request Consumption of HP Systinet Artifacts**  
Form a contract to consume artifacts in the HP Systinet Catalog.  
For details, see ["Requesting Consumption of HP Systinet Artifacts " \(on page 27\)](#)
- **Request Lifecycle Approval of HP Systinet Artifacts**  
Request the approval of the current lifecycle stage for HP Systinet artifacts.  
For details, see ["Requesting Lifecycle Approval " \(on page 28\)](#).

### Usecases

Systinet Plug-In for Visual Studio is designed to assist in the development of services for the following users:

- **Service Architects**

- Download resources.

Import service definition files from HP Systinet.

For details, see "[Downloading HP Systinet Resources](#)" (on page 17).

- Edit resources.

Edit service definitions using the standard functionality of your IDE.

- Upload resources.

Export your service definition files to HP Systinet.

For details, see "[Uploading HP Systinet Resources](#)" (on page 18).

- **Service Consumers**

- Locate the services you want to consume.

Catalog Search enables you to identify definitions of the services you want to consume. You can limit the search to services that are consumable, or to a particular lifecycle stage (for example, Production).

For details, see "[Searching the Catalog](#)" (on page 14).

- Add web references for services you want to consume.

Using the service definitions located in searches, add a web reference from the service definition to assist the development of your service consuming application.

For details, see "[Adding Web References](#)" (on page 26).

## Getting Started

Systinet Plug-In for Visual Studio works in conjunction with your existing development platform.

This chapter contains the following sections:

- ["Installing Systinet Plug-In for Visual Studio" \(on page 12\)](#)
- ["Setting Up 2-way SSL" \(on page 13\)](#)

## Installing Systinet Plug-In for Visual Studio

HP Systinet Plug-In for Visual Studio is a plug-in for MS Visual Studio distributed as the following installation package:

`hp-systinet-visual-studio-plugin-4.10.msi`

### System Requirements

Operating System	Java JDK	IDE
Windows XP	N/A	MS Visual Studio 2005
		MS Visual Studio 2008
		MS Visual Studio 2010
Windows Vista	N/A	MS Visual Studio 2005
		MS Visual Studio 2008
		MS Visual Studio 2010
Windows 7	N/A	MS Visual Studio 2010

**Tip:** For supported platforms and known issues, see `readme.txt` alongside the package.

### To install Systinet Plug-In for Visual Studio:

- Execute the package, `hp-systinet-visual-studio-plugin-4.10.msi`

This documentation refers to the installation location as `VSP_HOME`.

### To start Systinet Plug-In for Visual Studio:

- Start your installation of Visual Studio.

The first time you start Systinet Plug-In for Visual Studio, if opening the Search Dialog, you are prompted for the connection URL and credentials for the HP Systinet server and the domain to use.

**Caution:** Systinet Plug-In for Visual Studio encrypts and store passwords. Saved passwords are stored in a file that is difficult but not impossible for an intruder to read.

## Setting Up 2-way SSL

You can set up 2-way SSL communication between Systinet Plug-In for Visual Studio and HP Systinet using the client certificate for your SSL environment.

### To enable 2-way SSL:

1. Close Systinet Plug-In for Visual Studio
2. Open `%AppData%/Systinet Visual Studio plug-in/app.config` with a text editor.  
  
`%AppData%` is the system variable for the Windows Application Data folder. Open a command prompt and use command, **echo %AppData%** to verify the location.
3. Modify the following section of the configuration file:

```
<configuration>
...
<clientCert>
  <keyfile>clientCert.p12</keyfile>
  <password>changeit</password>
</clientCert>
...
</configuration>
```

Replace the keyfile element with the absolute path to your client certificate file.

Replace the password element with the certificate file password.

4. Save `app.config`.

## Exploring the Catalog

Systinet Plug-In for Visual Studio enables you to search and examine data in the HP Systinet Catalog:

- ["Searching the Catalog" \(on page 14\)](#)  
Locate specific artifacts using lifecycle, consumption, and property criteria.
- ["Search Results" \(on page 14\)](#)  
View artifacts matching your search criteria and their related artifacts.
- ["Artifact Detail View" \(on page 15\)](#)  
Examine individual artifacts in detail.
- ["Viewing Artifacts in HP Systinet" \(on page 15\)](#)  
Open the HP Systinet Artifact Details page from Systinet Plug-In for Visual Studio.
- ["Using HP Systinet Navigator" \(on page 16\)](#)

Open an instance of Systinet in Systinet Plug-In for Visual Studio to view selected artifacts using the Graphical Navigator feature.

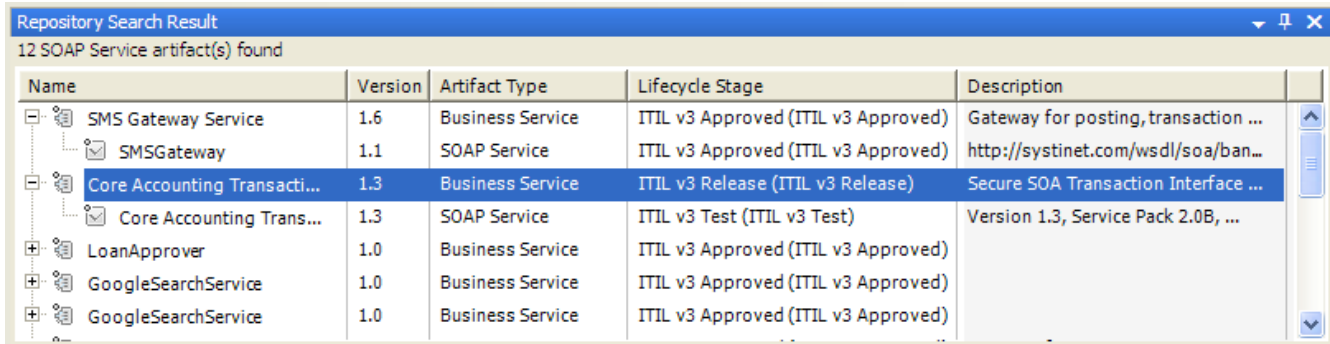
## Search Results

Systinet Plug-In for Visual Studio displays the results of a Catalog search in the Catalog Search Results tab.

To search the Catalog, see "[Searching the Catalog](#)" (on page 14).

The results show a tree of artifacts for each artifact matching the search criteria, as shown in below:

### Catalog Search Results View



Name	Version	Artifact Type	Lifecycle Stage	Description
SMS Gateway Service	1.6	Business Service	ITIL v3 Approved (ITIL v3 Approved)	Gateway for posting, transaction ...
SMSGateway	1.1	SOAP Service	ITIL v3 Approved (ITIL v3 Approved)	http://systinet.com/wsdl/soa/ban...
Core Accounting Transacti...	1.3	Business Service	ITIL v3 Release (ITIL v3 Release)	Secure SOA Transaction Interface ...
Core Accounting Trans...	1.3	SOAP Service	ITIL v3 Test (ITIL v3 Test)	Version 1.3, Service Pack 2.0B, ...
LoanApprover	1.0	Business Service	ITIL v3 Approved (ITIL v3 Approved)	
GoogleSearchService	1.0	Business Service	ITIL v3 Approved (ITIL v3 Approved)	
GoogleSearchService	1.0	Business Service	ITIL v3 Approved (ITIL v3 Approved)	

The tree for each matching artifact contains any child artifacts. If you select **Show Parent Artifacts** in your search, the tree also includes parent artifacts.

Double-click an artifact name in the Catalog Search Results tab to view its details in an artifact details tab. The tab name is the name of the artifact. For details, see "[Artifact Detail View](#)" (on page 15).

To download any associated service resources, right-click a result entry, and select **Save As**. For details, see "[Downloading HP Systinet Resources](#)" (on page 17).

## Searching the Catalog

HP Systinet Plug-In for Visual Studio includes a Catalog Search feature, enabling you to explore the content of HP Systinet.

### To search the Catalog:

1. Do one of the following:
  - From the menu, select **Edit>Find and Replace>Find Systinet Artifacts**.
  - Use keyboard shortcut **Alt+Shift+F**.

The Search Dialog opens.

2. In the Scope section, select an artifact type to search, and if required, a specific lifecycle stage and domain.

The Properties section refreshes showing specific details depending on the artifact type.

Adding web references uses WSDL definitions. To find the WSDL you need, search for SOAP Services or Operations, as these artifacts contain lifecycle and contract information. The functionality for adding web references is available on search results for SOAP Services and Operations and utilises the WSDLs associated with them.

3. Enter your search parameters.

For parameter details, see the "SDM Documentation" in HP Systinet.

4. To display the parent artifacts search result artifacts depend on, select **Show Parent Artifacts**

Selecting **Show Parent Artifacts** may reduce the speed of the search.

5. Click **Search** to execute the search.

Systinet Plug-In for Visual Studio displays the results of the search in the Catalog Search Result view. For details, see ["Search Results" \(on page 14\)](#).

## Artifact Detail View

Enables you to view the details for a particular artifact in its own detail view. The content of this view is similar to the Artifact Detail view in the Tools tab in HP Systinet.

The artifact details vary depending on the artifact type and your customization and configuration.

The Artifact Detail view contains the following segments depending on the artifact type:

- **General**

Displays a description, the owner of the artifact, and a URL to the REST representation of the artifact.

- **Details**

Displays a set of properties for the artifact. These properties vary depending on the artifact type.

- **Data**

Displays a link to the attached data in the Catalog for artifacts with attached data content. Click the link to view the content of the attached data.

- **Related Catalog Artifacts**

Displays the set of related artifacts, indicating the type of relationship, the related artifact, and the direction of the relationship.

Double-click an artifact name to open its detail view.

## Viewing Artifacts in HP Systinet

Systinet Plug-In for Visual Studio enables you to directly open the Artifact Details page in the HP Systinet user interface.

### To View Artifact Details in HP Systinet:

- Do one of the following:
  - In the Solution Explorer view, open the context menu for the Catalog artifact you want to view in HP Systinet, and select **HP Systinet>Open in HP Systinet**.

- In the Synchronization view, open the context menu for the Catalog artifact you want to view in HP Systinet, and select **Open in HP Systinet**.

A HP Systinet view opens showing the Artifact Details page for the selected artifact.

You may need to log in using your HP Systinet credentials.

For more details about the Artifact Details page, see the "Artifact Details Page" section in the HP Systinet User Guide.

## Using HP Systinet Navigator

HP Systinet includes a Graphical Navigator which provides a visual representation representation of the content of the Catalog. Instead of focusing on the details of single artifacts, it helps to understand the structure and dependencies of applications, services, and processes in your Catalog. As its name suggests, it is not only an alternative view but also a navigator that enables the exploration, browsing, and traversing of your Catalog content in a graphical way.

Systinet Plug-In for Visual Studio enables you to view Catalog content using the Navigator feature of HP Systinet.

### To view Catalog content in Navigator:

- Do one of the following:
  - In the Solution Explorer view, open the context menu for the Catalog artifact you want to view in Navigator, and select **HP Systinet>View Graphical Navigator** or **HP Systinet>View Impact Analysis**.
  - In the Search Results view, open the context menu for the Catalog artifact you want to view in Navigator, and select **View Graphical Navigator** or **View Impact Analysis**.

A HP Systinet view opens in the Navigator showing the graph for the selected artifact. If you selected **View Impact Analysis** the graph highlights the related artifacts that have a dependency on the selected artifact and could be affected by a change to that artifact.

You may need to log in using your HP Systinet credentials.

For more details about the Navigator and its use, see the "Catalog Visualization" chapter in the HP Systinet User Guide.



## Modifying Resources

Systinet Plug-In for Visual Studio enables you to download resources from HP Systinet, modify them, and then upload them back to HP Systinet.

These features are described in the following sections:

- ["Downloading HP Systinet Resources " \(on page 17\)](#)  
Download service definitions from HP Systinet.
- ["Uploading HP Systinet Resources " \(on page 18\)](#)  
Upload service definitions to HP Systinet.
- ["Synchronizing Resources " \(on page 19\)](#)  
Synchronize local resources with the latest HP Systinet revisions.
- ["Deleting HP Systinet Resources " \(on page 20\)](#)  
Delete HP Systinet resources.

## Downloading HP Systinet Resources

Systinet Plug-In for Visual Studio enables you to download the service definitions associated with artifacts from HP Systinet.

Systinet Plug-In for Visual Studio supports download for the following file types:

- WSDL
- BPEL
- XSD
- DTD
- SCA

### To download service definitions from HP Systinet:

1. Perform a Catalog search to locate the service you want to download the definitions for.  
For details, see ["Searching the Catalog " \(on page 14\)](#).
2. In the Catalog Search Results view, right-click a search result, and select **Download from Server**.  
The Download Document from HP Systinet dialog opens.
3. In the Download Document from HP Systinet dialog:  
Select **Resolve Dependencies** to resolve any dependencies in the service definition files and download all referenced files as well.  
Select **Open Resource after Downloading** to open an editor view of the downloaded resource.  
Select a location in your project to store the downloaded resources, and then click **Finish**.

Systinet Plug-In for Visual Studio downloads the relevant service definition files and copies them to the selected location. The structure of the HP Systinet publishing location space is preserved.

For details about the Publishing Location space, see "Publishing Locations Workspace" in the *HP Systinet Developer Guide*.

## Uploading HP Systinet Resources

Systinet Plug-In for Visual Studio enables you to upload service definition documents directly to HP Systinet.

Systinet Plug-In for Visual Studio supports upload for the following file types:

- WSDL
- BPEL
- XSD
- DTD
- SCA

Systinet Plug-In for Visual Studio auto-detects referenced documents for upload in SCA documents by QName according to the following rules:

From	To	Element Tag
SCA Composite	SCA Composite	<include name="{QNAME}" />
SCA Composite	SCA Composite	<implementation.composite name="{QNAME}" />
SCA Composite	SCA Constraining Type	<composite constrainingType="{QNAME}" />
SCA Composite	SCA Constraining Type	<component constrainingType="{QNAME}" />
SCA Composite	BPEL File	<implementation.bpel process="{QNAME}"/>
SCA Component Type	SCA Constraining Type	<componentType constrainingType="{QNAME}" />
SCA Contribution	SCA Composite	<deployable composite="{QNAME}" />

Systinet Plug-In for Visual Studio also resolves referenced local WSDL files in SCA files for upload.

### Procedure 2. To upload service definitions to HP Systinet:

1. In the Solution Explorer, right-click the resource or folder of resources you want to upload, and select **HP Systinet > Upload to Server** to open the Upload Documents dialog box.

This option is only available if you have appropriate permissions in HP Systinet.

2. Select resources to upload, and then click **Next**.
3. Select the publishing location folder, or input a new one, and then click **Next**.
4. Select from the following **Advanced Options**:

Parameter	Definition
BPEL Decomposition	Select whether to create Business Process artifacts defined by a BPEL document.
WSDL Decomposition	Select a WSDL processing level from the following options: <ul style="list-style-type: none"><li>■ <b>Services</b> Process any WSDLs, create all defined content and create business services to associate with any newly created implementations.</li><li>■ <b>Implementations</b> Process any WSDLs and create all defined content. Business services are not created.</li><li>■ <b>None</b> Publish any WSDLs as artifacts with attached data content. The WSDL files are not processed.</li></ul>
Service Type	Select a service categorization for created service artifacts.
Remove Unsynchronized	If a WSDL is republished the artifacts it references may change and previously created artifacts may no longer be required. Select artifact types to remove the relationships with these obsolete referenced artifacts.

Click **Next**.

HP Systinet processes the content for upload and returns an Upload Overview to Systinet Plug-In for Visual Studio.

If your version of HP Systinet does not support the new advanced options, Systinet Plug-In offers a reduced set of the listed options.

5. Review the overview and click **Finish** to complete the upload and create the relevant artifacts, or **Cancel** to abort the upload.

The artifacts upload to the domain selected in preferences.

## Synchronizing Resources

After downloading resources from HP Systinet, you may want to synchronize them with HP Systinet.

**To synchronize a local resource with HP Systinet:**

1. In the Solution Explorer, right-click the resource you want to synchronize and select **HP Systinet>Synchronize with Server**.

The Synchronization view opens showing any files that differ.

2. Optionally, right-click an item that differs from the server version, and select **Update** to download the latest version from HP Systinet.

## Deleting HP Systinet Resources

Systinet Plug-In for Visual Studio enables you to delete resources stored in the HP Systinet Catalog.

### To delete HP Systinet resources:

1. In the Solution Explorer, right-click the resource you want to delete, and select **HP Systinet>Delete from Server**.  
The HP Systinet UI opens requesting authentication.
2. Enter your credentials.  
The detail view of the artifact you want to delete opens.
3. Use HP Systinet functionality to delete the artifact. For details, see the *HP Systinet User Guide*.

## Validating Resources

Systinet Plug-In for Visual Studio enables you to validate local resources against policies.

This chapter contains the following sections:

- ["Setting Up Validation " \(on page 21\)](#)  
Explains the process of importing and updating policies from the Policy Manager.
- ["Ad Hoc Validation " \(on page 22\)](#)  
Explains how to run unscheduled validation and produce reports.

## Setting Up Validation

You can add or delete policies, and update your local policies against versions from an HP Systinet server.

Validation is introduced in the following sections:

- ["Setting Up Policies " \(on page 21\)](#)
- ["Updating Policies " \(on page 22\)](#)
- ["Removing Policies " \(on page 22\)](#)

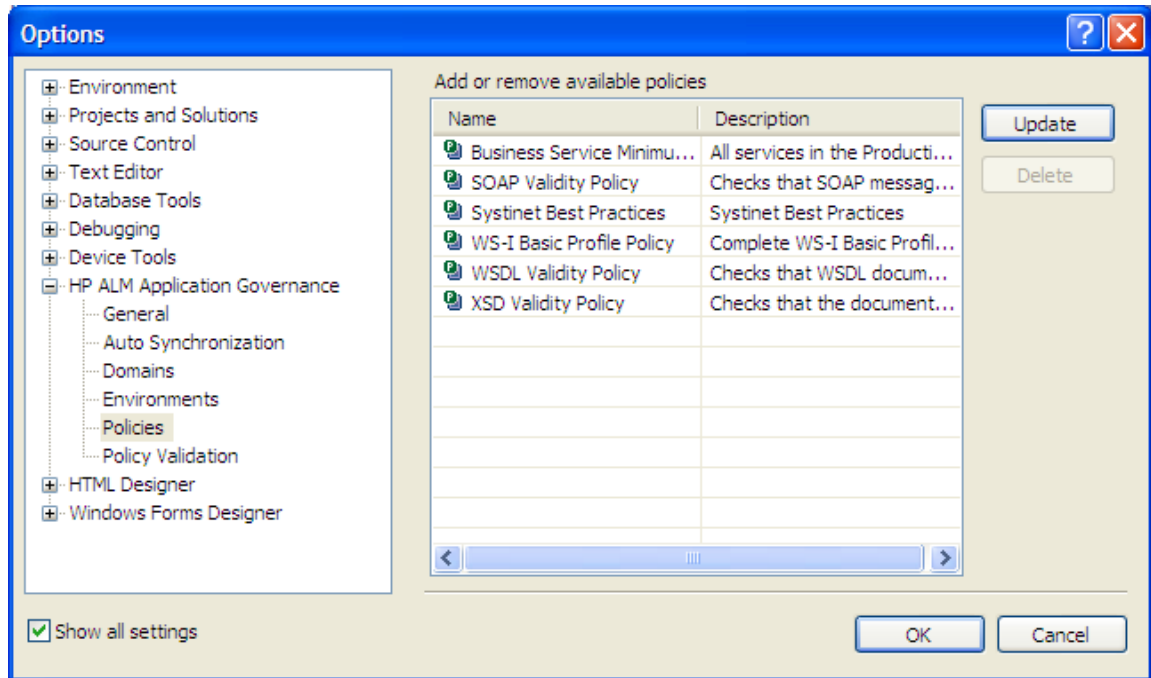
## Setting Up Policies

You can add, delete, or update policies in the Systinet Plug-In for Visual Studio Policies page.

### To set up policies:

1. From the menu, select **Tools>Options** to open the Options dialog box.
2. In the tree view of the Preferences dialog box, select **HP Systinet>Policies** to open the Policies page, as shown below:

### Policies Page



In the Policies page, do any of the following:

- Update local policies. For details, see ["Updating Policies " \(on page 22\)](#).
- Remove a policy. For details, see ["Removing Policies " \(on page 22\)](#).

## Updating Policies

You can use Systinet Plug-In for Eclipse to update local policies against policies on an HP Systinet server.

### To update policies:

1. Make sure the HP Systinet server is running.
2. Click **Update** to open the Select Policy for Update dialog box.
3. Select the policies to update and click Finish.

The local version of the selected policies update to reflect the version on the HP Systinet server.

## Removing Policies

### To remove a policy:

- Highlight the policy in the Policies page, and then click **Delete**.

## Ad Hoc Validation

Ad hoc validation is the unscheduled validation of documents against policies.

Ad hoc validation is described in the following sections:

- ["Running Ad Hoc Validation " \(on page 23\)](#)
- ["Viewing Ad Hoc Validation Results " \(on page 23\)](#)
- ["Revalidating a Document " \(on page 25\)](#)
- ["Exporting Reports " \(on page 25\)](#)
- ["Setting Report Style " \(on page 25\)](#)

## Running Ad Hoc Validation

### To run ad hoc validation on resources:

1. Open the context menu for a document in the Solution Explorer, and select **Check Policy Compliance**.  
The Validate More Policies dialog box opens.
2. To add more documents to validate, do one of the following:
  - Click **Add Resource** to browse and select documents from your Visual Studio project.
  - Click **Add External File** to browse and select documents from your file system.
  - Click **Add External Folder** to browse and select all documents in a folder in your file system.
  - Click **Add URL** to enter the endpoint URL of a remote document.
3. In the Technical Policies field, click **Add** to select from a list of available policies to use in the validation.
4. Click **Run**.

The validation runs and the result is shown in the Validation Result tab.

For details, see ["Viewing Ad Hoc Validation Results " \(on page 23\)](#).

## Viewing Ad Hoc Validation Results

When validation completes, the Validation Result view displays the results. For each result, you can view a detailed HTML report. You can also view a summary report for all validation results.

The default report style is similar to that of Policy Manager validation reports. For information about setting report styles, see ["Setting Report Style " \(on page 25\)](#).

### To view a validation report:

- In the Validation Result tab, open the context menu for an item, and select **View Detail**.

#### Validation Report

### GoogleSearch.wsdl

Report

**External Document:** [GoogleSearch.wsdl](#)  
**Technical policy:** [WS-I Basic Profile Policy](#)  
**Status:** ✘ Non-compliant  
**Validated:** 2007-11-15 10:26:17.515

**Failed Assertions**

Assertion	Severity	Document	Error Line	Column
BP2406	Normal	<a href="#">GoogleSearch.wsdl</a>		
The use attribute of a soapbind:body, soapbind:fault, soapbind:header and soapbind:headerfault does not have value of "literal". Caused by:SOAPBody ((http://schemas.xmlsoap.org/wsdl/soap/):body): required=null use=encoded encodingStyle=[http://schemas.xmlsoap.org/soap/encoding/] namespaceURI=urn:GoogleSearch				
BP2019	Normal	<a href="#">GoogleSearch.wsdl</a>		
Prerequisite assertion BP2406 failed: The use attribute of a soapbind:body, soapbind:fault, soapbind:header and soapbind:headerfault does not have value of "literal". Caused by:SOAPBody ((http://schemas.xmlsoap.org/wsdl/soap/):body): required=null use=encoded encodingStyle=[http://schemas.xmlsoap.org/soap/encoding/]				

If you have more than one validation result, you can view a summary report of all the validation results.

To view a summary report, in the Validation Result tab, select the items to summarize and open the context menu, select **Create Summary Report**.

The Summary Report view opens, as shown below:

### Summary Report

**Status:** ✘ Non-compliant  
**Validated:** 2007-11-15 10:26:17

Name	Status	Details
<a href="#">GoogleSearch</a>	<span style="color: red;">✘</span> Non-compliant	<a href="#">report</a>
<a href="#">EligibilityServiceBindings</a>	<span style="color: green;">✔</span> Compliant	<a href="#">report</a>
<a href="#">ProfileService</a>	<span style="color: green;">✔</span> Compliant	<a href="#">report</a>

Resource	Path	Policies	Status	Failed	Warning	Passed	To Review	Time
ProfileService.wsdl	D:\dthoa\runtime-New...	WS-I Basic Profile Policy	<span style="color: green;">✔</span> Compliant	0%	0%	100%	0	11/15/07 10:26 AM
MessageTypes.xsd	D:\dthoa\runtime-New...	WS-I Basic Profile Policy	<span style="color: gray;">?</span> Not Applicable	0%	0%	0%	0	11/15/07 10:26 AM
JobService.wsdl	D:\dthoa\runtime-New...	WS-I Basic Profile Policy	<span style="color: green;">✔</span> Compliant	0%	0%	100%	0	11/15/07 10:26 AM
GoogleSearch.wsdl	D:\dthoa\runtime-New...	WS-I Basic Profile Policy	<span style="color: red;">✘</span> Non-compliant	17.9%	0%	82.1%	0	11/15/07 10:26 AM



To view the detailed report of a document in the summary, click the **report** hyper link in the Details column.

## Revalidating a Document

If recent changes have been made to a document, you can revalidate that document.

To revalidate a document:

- In the Validation Result tab, open the context menu for an item, and then select **Revalidate**.

The document is revalidated against the selected policies.

## Exporting Reports

You can export a validation report to your file system.

To export a validation report:

1. In the Validation Result tab, select the items to export, open the context menu and select **Export Reports**.
2. Browse for the location to which you want to save the report, and click **OK**.

Both detail and summary reports are saved.

## Setting Report Style

Included with Systinet Plug-In for Eclipse is the Policy Manager detail report stylesheet. If you want to change the stylesheet, you can select from a pure text style or XML format.

**To change the style of ad hoc validation reports:**

1. From the menu, select **Tools>Options**.  
The Options dialog box opens.
2. In the tree view of the Options dialog box, expand **HP Systinet>Policy Validation**.  
The Policy Validation page opens.
3. In the Validation Result Format pane, select one of the following options:
  - **Text Format**, then go to Step 5.
  - **XML Format**, then go to Step 4.
4. In the Stylesheet pane, select one of the following options:
  - **Associate with default stylesheet**.
  - **Custom stylesheet**, then browse for the stylesheet you need.
5. Click **OK** to produce the report in the selected format.

## Adding Web References

Systinet Plug-In for Visual Studio integrates with existing Visual Studio functionality, enabling you to create a web reference from resources in the Catalog.

To add a web reference:

1. Perform a Catalog search to locate the resource you want to use for web reference addition.

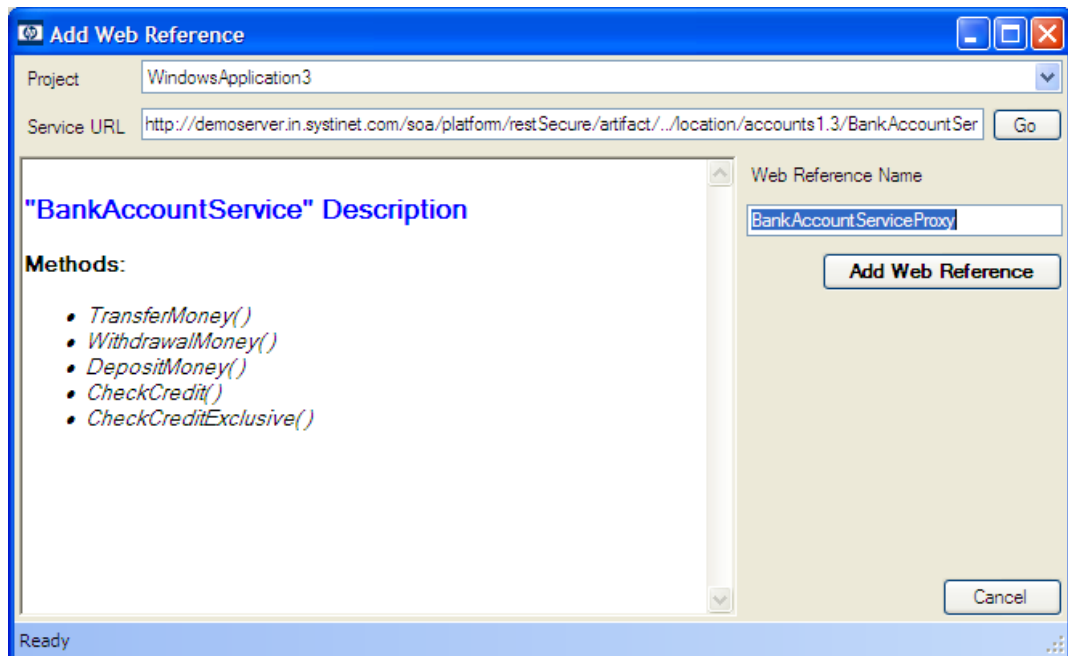
For details, see ["Searching the Catalog" \(on page 14\)](#).

For consumer use cases search for *Consumable* services at the *Production* lifecycle stage.

2. In the Catalog Search Results view, right-click the Operation or SOAP Service to use for web reference addition, and select **Add Web Reference**.

Adding a web reference against a SOAP Service or Operation uses the WSDL associated with it.

The Add Web Reference dialog opens.



3. Use the Add Web Reference dialog to select your web reference settings.

Use the Object Browser to examine the web reference.

## Requesting Consumption of HP Systinet Artifacts

HP Systinet enables users to request the consumption of an artifact in order to use it subject to terms set by the provider.

This feature is only available for artifacts that are marked as consumable in HP Systinet.

Systinet Plug-In for Visual Studio enables you to request consumption directly.

### To Request Consumption of HP Systinet Artifacts:

- Do one of the following:
  - In the Search Results view, open the context menu for the artifact you want to consume, and select **Request Contract**.
  - In the Artifact Detail view, in the Request Server section, select **Request Contract**.

An HP Systinet view opens in the Select Consumer Artifact page of the Request Consumption wizard. For details about requesting consumption of artifacts, see "How to Request Consumption of an Artifact" in the *HP Systinet User Guide*.

You may need to log in using your HP Systinet credentials.

For more details about Contracts, see "Contract Management" in the *HP Systinet User Guide*.

## Requesting Lifecycle Approval

HP Systinet uses Lifecycle Processes to govern artifacts. An important stage in lifecycle is the approval of particular lifecycle stages.

Systinet Plug-In for Visual Studio enables you to request lifecycle approval directly.

### To Request Approval of HP Systinet Artifacts:

1. Do one of the following:
  - In the Solution Explorer view, open the context menu for the Catalog artifact you want to request approval for, and select **HP Systinet>Request Approval**.
  - In the Search Results view, open the context menu for the artifact you want to request approval for, and select **Request Approval**.
  - In the Artifact Detail view, in the Request Server section, select **Request Approval**.

The Request Approval dialog box opens.

2. Input a description, and click **OK** to submit your stage approval request. For more details about requesting approval of artifacts, see "How to Request Approval" in the *HP Systinet User Guide*.

For more details about Lifecycle, see "Lifecycle Governance" in the *HP Systinet User Guide*.